



# Full wwPDB X-ray Structure Validation Report ⓘ

Mar 6, 2026 – 08:25 PM UTC

PDB ID : 2A2C / pdb\_00002a2c  
Title : x-ray structure of human N-acetyl galactosamine kinase complexed with Mg-ADP and N-acetyl galactosamine 1-phosphate  
Authors : Thoden, J.B.; Holden, H.M.  
Deposited on : 2005-06-22  
Resolution : 1.65 Å(reported)

This is a Full wwPDB X-ray Structure Validation Report for a publicly released PDB entry.

We welcome your comments at [validation@mail.wwpdb.org](mailto:validation@mail.wwpdb.org)

A user guide is available at

<https://www.wwpdb.org/validation/2017/XrayValidationReportHelp>

with specific help available everywhere you see the ⓘ symbol.

The types of validation reports are described at

<http://www.wwpdb.org/validation/2017/FAQs#types>.

---

The following versions of software and data (see [references ⓘ](#)) were used in the production of this report:

MolProbity : 4-5-2 with Phenix2.0  
Mogul : 2022.3.0, CSD as543be (2022)  
Xtrriage (Phenix) : 2.0  
EDS : 3.0  
Buster-report : wwPDB partial adaption of 1.1.7 (2018)  
Percentile statistics : 20250101.v01 (using entries in the PDB archive January 1st 2025)  
CCP4 : 9.0.010 (Gargrove)  
Density-Fitness : 1.0.12  
Ideal geometry (proteins) : Engh & Huber (2001)  
Ideal geometry (DNA, RNA) : Parkinson et al. (1996)  
Validation Pipeline (wwPDB-VP) : 2.49

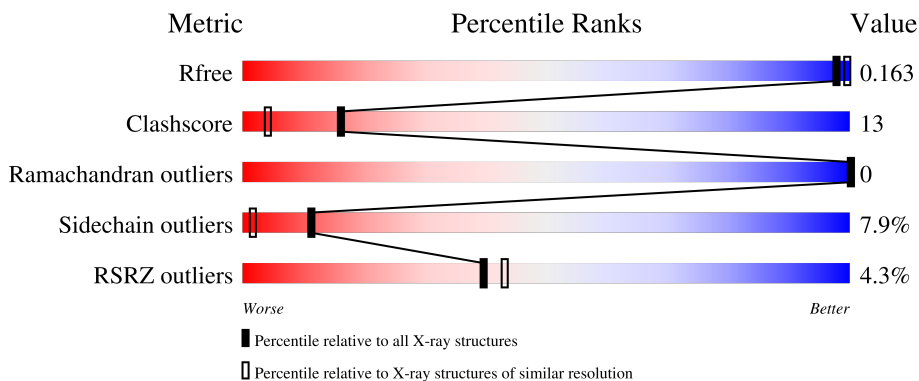
# 1 Overall quality at a glance

The following experimental techniques were used to determine the structure:

*X-RAY DIFFRACTION*

The reported resolution of this entry is 1.65 Å.

Percentile scores (ranging between 0-100) for global validation metrics of the entry are shown in the following graphic. The table shows the number of entries on which the scores are based.



Metric	Whole archive (#Entries)	Similar resolution (#Entries, resolution range(Å))
$R_{free}$	180053	2563 (1.66-1.66)
Clashscore	190562	2662 (1.66-1.66)
Ramachandran outliers	187476	2621 (1.66-1.66)
Sidechain outliers	187428	2621 (1.66-1.66)
RSRZ outliers	180081	2564 (1.66-1.66)

The table below summarises the geometric issues observed across the polymeric chains and their fit to the electron density. The red, orange, yellow and green segments of the lower bar indicate the fraction of residues that contain outliers for  $\geq 3$ , 2, 1 and 0 types of geometric quality criteria respectively. A grey segment represents the fraction of residues that are not modelled. The numeric value for each fraction is indicated below the corresponding segment, with a dot representing fractions  $\leq 5\%$ . The upper red bar (where present) indicates the fraction of residues that have poor fit to the electron density. The numeric value is given above the bar.

Mol	Chain	Length	Quality of chain
1	A	478	

## 2 Entry composition [i](#)

There are 7 unique types of molecules in this entry. The entry contains 3976 atoms, of which 0 are hydrogens and 0 are deuteriums.

In the tables below, the ZeroOcc column contains the number of atoms modelled with zero occupancy, the AltConf column contains the number of residues with at least one atom in alternate conformation and the Trace column contains the number of residues modelled with at most 2 atoms.

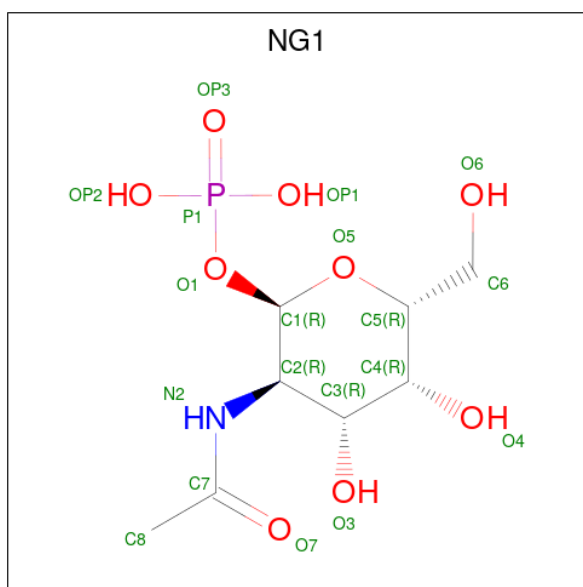
- Molecule 1 is a protein called N-acetylgalactosamine kinase.

Mol	Chain	Residues	Atoms					ZeroOcc	AltConf	Trace
			Total	C	N	O	S			
1	A	446	3470	2206	589	645	30	0	9	0

There are 20 discrepancies between the modelled and reference sequences:

Chain	Residue	Modelled	Actual	Comment	Reference
A	-19	MET	-	cloning artifact	UNP Q01415
A	-18	GLY	-	cloning artifact	UNP Q01415
A	-17	SER	-	cloning artifact	UNP Q01415
A	-16	SER	-	cloning artifact	UNP Q01415
A	-15	HIS	-	expression tag	UNP Q01415
A	-14	HIS	-	expression tag	UNP Q01415
A	-13	HIS	-	expression tag	UNP Q01415
A	-12	HIS	-	expression tag	UNP Q01415
A	-11	HIS	-	expression tag	UNP Q01415
A	-10	HIS	-	expression tag	UNP Q01415
A	-9	SER	-	cloning artifact	UNP Q01415
A	-8	SER	-	cloning artifact	UNP Q01415
A	-7	GLU	-	cloning artifact	UNP Q01415
A	-6	ASN	-	cloning artifact	UNP Q01415
A	-5	LEU	-	cloning artifact	UNP Q01415
A	-4	TYR	-	cloning artifact	UNP Q01415
A	-3	PHE	-	cloning artifact	UNP Q01415
A	-2	GLN	-	cloning artifact	UNP Q01415
A	-1	GLY	-	cloning artifact	UNP Q01415
A	0	HIS	-	cloning artifact	UNP Q01415

- Molecule 2 is 2-acetamido-2-deoxy-1-O-phosphono-alpha-D-galactopyranose (CCD ID: NG1) (formula: C<sub>8</sub>H<sub>16</sub>NO<sub>9</sub>P).



Mol	Chain	Residues	Atoms					ZeroOcc	AltConf
			Total	C	N	O	P		
2	A	1	19	8	1	9	1	0	0

- Molecule 3 is MAGNESIUM ION (CCD ID: MG) (formula: Mg).

Mol	Chain	Residues	Atoms		ZeroOcc	AltConf
			Total	Mg		
3	A	1	1	1	0	0

- Molecule 4 is CHLORIDE ION (CCD ID: CL) (formula: Cl).

Mol	Chain	Residues	Atoms		ZeroOcc	AltConf
			Total	Cl		
4	A	1	1	1	0	0

- Molecule 5 is SODIUM ION (CCD ID: NA) (formula: Na).

Mol	Chain	Residues	Atoms		ZeroOcc	AltConf
			Total	Na		
5	A	1	1	1	0	0

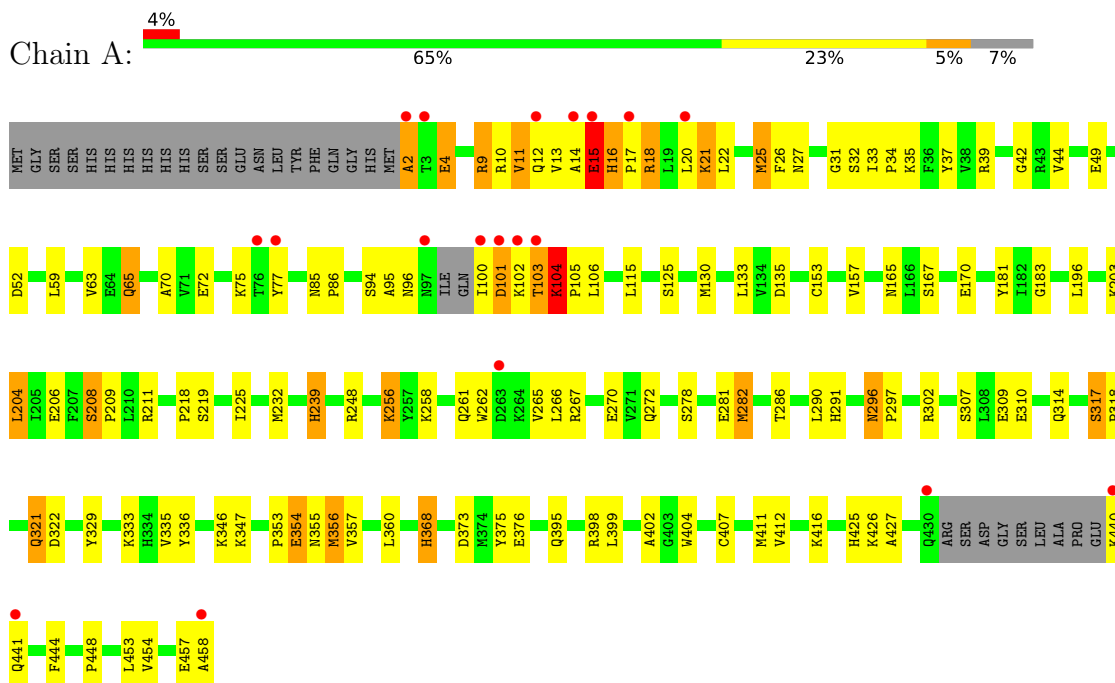
- Molecule 6 is ADENOSINE-5'-DIPHOSPHATE (CCD ID: ADP) (formula: C<sub>10</sub>H<sub>15</sub>N<sub>5</sub>O<sub>10</sub>P<sub>2</sub>).



### 3 Residue-property plots [i](#)

These plots are drawn for all protein, RNA, DNA and oligosaccharide chains in the entry. The first graphic for a chain summarises the proportions of the various outlier classes displayed in the second graphic. The second graphic shows the sequence view annotated by issues in geometry and electron density. Residues are color-coded according to the number of geometric quality criteria for which they contain at least one outlier: green = 0, yellow = 1, orange = 2 and red = 3 or more. A red dot above a residue indicates a poor fit to the electron density ( $RSRZ > 2$ ). Stretches of 2 or more consecutive residues without any outlier are shown as a green connector. Residues present in the sample, but not in the model, are shown in grey.

- Molecule 1: N-acetylgalactosamine kinase



## 4 Data and refinement statistics i

Property	Value	Source
Space group	P 65	Depositor
Cell constants a, b, c, $\alpha$ , $\beta$ , $\gamma$	123.80Å 123.80Å 60.10Å 90.00° 90.00° 120.00°	Depositor
Resolution (Å)	50.00 – 1.65 50.00 – 1.65	Depositor EDS
% Data completeness (in resolution range)	94.3 (50.00-1.65) 94.4 (50.00-1.65)	Depositor EDS
$R_{merge}$	(Not available)	Depositor
$R_{sym}$	0.05	Depositor
$\langle I/\sigma(I) \rangle$ <sup>1</sup>	0.86 (at 1.65Å)	Xtrriage
Refinement program	TNT	Depositor
R, $R_{free}$	0.167 , 0.201 0.165 , 0.163	Depositor DCC
$R_{free}$ test set	5980 reflections (10.02%)	wwPDB-VP
Wilson B-factor (Å <sup>2</sup> )	18.5	Xtrriage
Anisotropy	0.083	Xtrriage
Bulk solvent $k_{sol}$ (e/Å <sup>3</sup> ), $B_{sol}$ (Å <sup>2</sup> )	0.38 , 97.0	EDS
L-test for twinning <sup>2</sup>	$\langle  L  \rangle = 0.49$ , $\langle L^2 \rangle = 0.32$	Xtrriage
Estimated twinning fraction	0.054 for h,-h-k,-l	Xtrriage
$F_o, F_c$ correlation	0.97	EDS
Total number of atoms	3976	wwPDB-VP
Average B, all atoms (Å <sup>2</sup> )	30.0	wwPDB-VP

Xtrriage's analysis on translational NCS is as follows: *The largest off-origin peak in the Patterson function is 2.99% of the height of the origin peak. No significant pseudotranslation is detected.*

<sup>1</sup>Intensities estimated from amplitudes.

<sup>2</sup>Theoretical values of  $\langle |L| \rangle$ ,  $\langle L^2 \rangle$  for acentric reflections are 0.5, 0.333 respectively for untwinned datasets, and 0.375, 0.2 for perfectly twinned datasets.

## 5 Model quality [i](#)

### 5.1 Standard geometry [i](#)

Bond lengths and bond angles in the following residue types are not validated in this section: ADP, CL, NA, MG, NG1

The Z score for a bond length (or angle) is the number of standard deviations the observed value is removed from the expected value. A bond length (or angle) with  $|Z| > 5$  is considered an outlier worth inspection. RMSZ is the root-mean-square of all Z scores of the bond lengths (or angles).

Mol	Chain	Bond lengths		Bond angles	
		RMSZ	# Z  >5	RMSZ	# Z  >5
1	A	1.10	3/3572 (0.1%)	1.57	43/4828 (0.9%)

All (3) bond length outliers are listed below:

Mol	Chain	Res	Type	Atoms	Z	Observed(Å)	Ideal(Å)
1	A	16	HIS	N-CA	-5.12	1.41	1.46
1	A	52	ASP	CG-OD2	5.12	1.35	1.25
1	A	16	HIS	CA-C	-5.06	1.46	1.52

All (43) bond angle outliers are listed below:

Mol	Chain	Res	Type	Atoms	Z	Observed(°)	Ideal(°)
1	A	105	PRO	N-CA-CB	8.66	108.50	102.35
1	A	322	ASP	CA-CB-CG	-7.50	105.10	112.60
1	A	291	HIS	CA-CB-CG	7.32	121.12	113.80
1	A	425	HIS	CA-CB-CG	-7.28	106.53	113.80
1	A	356	MET	N-CA-C	6.99	119.50	111.11
1	A	16	HIS	CA-CB-CG	-6.62	107.18	113.80
1	A	321	GLN	N-CA-C	6.61	120.44	112.38
1	A	204	LEU	N-CA-C	-6.47	98.67	108.96
1	A	453	LEU	CB-CA-C	-6.47	96.53	110.45
1	A	2	ALA	CB-CA-C	-6.33	101.00	110.50
1	A	373	ASP	N-CA-C	5.95	120.72	112.45
1	A	412	VAL	N-CA-C	5.91	114.33	107.89
1	A	407	CYS	N-CA-C	5.90	119.25	110.52
1	A	135	ASP	CA-C-N	-5.87	118.04	122.33
1	A	135	ASP	C-N-CA	-5.87	118.04	122.33
1	A	368	HIS	CA-CB-CG	-5.85	107.95	113.80
1	A	239	HIS	CA-CB-CG	5.79	119.59	113.80
1	A	196	LEU	N-CA-C	5.68	120.21	113.28

*Continued on next page...*

Continued from previous page...

Mol	Chain	Res	Type	Atoms	Z	Observed(°)	Ideal(°)
1	A	15	GLU	CA-C-N	-5.66	114.57	122.66
1	A	15	GLU	C-N-CA	-5.66	114.57	122.66
1	A	427	ALA	N-CA-C	5.59	117.45	111.36
1	A	11	VAL	CA-C-N	-5.58	115.18	123.11
1	A	11	VAL	C-N-CA	-5.58	115.18	123.11
1	A	317	SER	CA-C-O	5.49	126.30	120.64
1	A	9	ARG	CA-C-N	5.48	129.34	121.50
1	A	9	ARG	C-N-CA	5.48	129.34	121.50
1	A	402	ALA	N-CA-C	5.43	117.96	111.71
1	A	335	VAL	N-CA-C	5.42	115.63	110.42
1	A	448	PRO	N-CA-CB	5.41	107.99	103.17
1	A	265	VAL	N-CA-C	5.39	116.04	109.30
1	A	296	ASN	CA-C-N	5.39	124.85	119.24
1	A	296	ASN	C-N-CA	5.39	124.85	119.24
1	A	454	VAL	N-CA-CB	5.38	117.44	110.99
1	A	42	GLY	N-CA-C	-5.34	104.41	112.41
1	A	412	VAL	N-CA-CB	-5.31	105.93	111.61
1	A	239	HIS	CB-CA-C	-5.21	102.19	110.84
1	A	95	ALA	N-CA-C	5.21	117.58	110.24
1	A	104	LYS	N-CA-CB	-5.18	101.15	110.37
1	A	105	PRO	N-CA-C	5.12	121.91	112.33
1	A	402	ALA	CA-C-N	-5.11	114.04	122.05
1	A	402	ALA	C-N-CA	-5.11	114.04	122.05
1	A	261	GLN	CA-C-N	5.04	127.53	120.28
1	A	261	GLN	C-N-CA	5.04	127.53	120.28

There are no chirality outliers.

There are no planarity outliers.

## 5.2 Too-close contacts

In the following table, the Non-H and H(model) columns list the number of non-hydrogen atoms and hydrogen atoms in the chain respectively. The H(added) column lists the number of hydrogen atoms added and optimized by MolProbity. The Clashes column lists the number of clashes within the asymmetric unit, whereas Symm-Clashes lists symmetry-related clashes.

Mol	Chain	Non-H	H(model)	H(added)	Clashes	Symm-Clashes
1	A	3470	0	3519	93	0
2	A	19	0	14	0	0
3	A	1	0	0	0	0
4	A	1	0	0	0	0

Continued on next page...

*Continued from previous page...*

Mol	Chain	Non-H	H(model)	H(added)	Clashes	Symm-Clashes
5	A	1	0	0	0	0
6	A	27	0	12	0	0
7	A	457	0	0	13	1
All	All	3976	0	3545	93	1

The all-atom clashscore is defined as the number of clashes found per 1000 atoms (including hydrogen atoms). The all-atom clashscore for this structure is 13.

All (93) close contacts within the same asymmetric unit are listed below, sorted by their clash magnitude.

Atom-1	Atom-2	Interatomic distance (Å)	Clash overlap (Å)
1:A:21:LYS:HE2	1:A:25[B]:MET:HE2	1.33	1.10
1:A:13:VAL:HG12	1:A:20:LEU:HD12	1.15	1.10
1:A:103:THR:HB	1:A:104:LYS:HE2	1.39	1.04
1:A:13:VAL:HG12	1:A:20:LEU:CD1	2.04	0.86
1:A:12:GLN:HG3	1:A:458:ALA:CB	2.07	0.84
1:A:103:THR:CB	1:A:104:LYS:HE2	2.07	0.84
1:A:232[B]:MET:HE2	1:A:239:HIS:CD2	2.12	0.84
1:A:102:LYS:HE2	1:A:183:GLY:HA2	1.60	0.82
1:A:12:GLN:HG3	1:A:458:ALA:HB3	1.62	0.80
1:A:12:GLN:HB2	1:A:15:GLU:CD	2.07	0.80
1:A:100:ILE:HD13	1:A:181:TYR:HB3	1.69	0.74
1:A:232[B]:MET:HE2	1:A:239:HIS:HD2	1.51	0.74
1:A:307:SER:OG	1:A:310:GLU:HG3	1.87	0.74
1:A:65:GLN:HE21	1:A:65:GLN:H	1.36	0.74
1:A:317:SER:HB2	1:A:318:PRO:HD2	1.72	0.72
1:A:2:ALA:HB1	7:A:914:HOH:O	1.89	0.71
1:A:13:VAL:CG1	1:A:20:LEU:HD12	2.09	0.70
1:A:44:VAL:HG21	1:A:225[A]:ILE:HD11	1.74	0.69
1:A:100:ILE:HD13	1:A:181:TYR:CB	2.23	0.69
1:A:248[A]:ARG:NH2	7:A:484:HOH:O	2.26	0.68
1:A:256:LYS:HD2	1:A:262:TRP:CD1	2.29	0.68
1:A:102:LYS:HE2	1:A:183:GLY:CA	2.25	0.67
1:A:59[A]:LEU:HD12	1:A:203:LYS:O	1.96	0.66
1:A:103:THR:HB	1:A:104:LYS:CE	2.21	0.65
1:A:206:GLU:OE2	1:A:211:ARG:NH1	2.30	0.65
1:A:12:GLN:HB2	1:A:15:GLU:OE1	1.96	0.64
1:A:278:SER:OG	1:A:281:GLU:HG3	1.97	0.64
1:A:346:LYS:NZ	7:A:879:HOH:O	2.34	0.61
1:A:13:VAL:HG23	1:A:457:GLU:HG2	1.82	0.60
1:A:65:GLN:H	1:A:65:GLN:NE2	1.99	0.60

*Continued on next page...*

*Continued from previous page...*

Atom-1	Atom-2	Interatomic distance (Å)	Clash overlap (Å)
1:A:25[A]:MET:HG2	7:A:796:HOH:O	2.03	0.58
1:A:165:ASN:HB2	7:A:811:HOH:O	2.03	0.58
1:A:18:ARG:HB2	7:A:884:HOH:O	2.04	0.58
1:A:272:GLN:HB2	1:A:282:MET:HG2	1.85	0.57
1:A:256:LYS:HD2	1:A:262:TRP:NE1	2.19	0.57
1:A:77:TYR:HB3	7:A:802:HOH:O	2.06	0.54
1:A:101:ASP:O	1:A:102:LYS:C	2.50	0.54
1:A:21:LYS:HG3	1:A:25[B]:MET:HE2	1.89	0.53
1:A:167:SER:OG	1:A:170:GLU:HG3	2.09	0.53
1:A:225[B]:ILE:HD12	1:A:444:PHE:CE1	2.44	0.53
1:A:27:ASN:HD22	1:A:32:SER:C	2.16	0.52
1:A:21:LYS:HE2	1:A:25[B]:MET:CE	2.23	0.51
1:A:14:ALA:HA	1:A:20:LEU:HD13	1.90	0.51
1:A:11:VAL:O	1:A:458:ALA:N	2.32	0.51
1:A:16:HIS:O	1:A:17:PRO:C	2.54	0.51
1:A:232[B]:MET:HG3	1:A:404:TRP:HB2	1.94	0.49
1:A:368:HIS:HB2	1:A:398:ARG:CB	2.43	0.49
1:A:203:LYS:NZ	7:A:890:HOH:O	2.39	0.48
1:A:34:PRO:HG2	1:A:37:TYR:OH	2.14	0.48
1:A:399:LEU:C	1:A:399:LEU:HD12	2.39	0.48
1:A:63:VAL:HG12	7:A:709:HOH:O	2.13	0.47
1:A:218:PRO:HG3	1:A:360:LEU:HD12	1.95	0.47
1:A:329:TYR:CE2	1:A:333:LYS:HE3	2.50	0.47
1:A:115:LEU:HD12	1:A:130:MET:CE	2.45	0.46
1:A:13:VAL:CG2	1:A:457:GLU:HG2	2.45	0.46
1:A:296:ASN:HB2	1:A:297:PRO:HD2	1.98	0.46
1:A:354:GLU:HG2	1:A:355:ASN:N	2.31	0.46
1:A:12:GLN:OE1	1:A:15:GLU:OE1	2.34	0.46
1:A:353:PRO:HB2	1:A:355:ASN:OD1	2.16	0.46
1:A:310:GLU:O	1:A:314:GLN:N	2.44	0.45
1:A:317:SER:CB	1:A:318:PRO:HD2	2.37	0.45
1:A:26:PHE:HZ	1:A:72:GLU:HB3	1.80	0.45
1:A:310:GLU:O	1:A:314:GLN:HB2	2.17	0.45
1:A:218:PRO:HG3	1:A:360:LEU:CD1	2.47	0.44
1:A:354:GLU:CG	1:A:355:ASN:N	2.80	0.44
1:A:457:GLU:HG2	7:A:883:HOH:O	2.16	0.44
1:A:282:MET:HG3	1:A:336:TYR:CE1	2.53	0.44
1:A:286:THR:HG23	1:A:290:LEU:HD12	1.99	0.44
1:A:360:LEU:HB2	1:A:411:MET:HE1	2.00	0.44
1:A:106:LEU:HD22	7:A:647:HOH:O	2.19	0.43
1:A:266:LEU:HD23	1:A:266:LEU:HA	1.81	0.43

*Continued on next page...*

Continued from previous page...

Atom-1	Atom-2	Interatomic distance (Å)	Clash overlap (Å)
1:A:22:LEU:HD12	1:A:22:LEU:HA	1.85	0.43
1:A:262:TRP:HZ3	7:A:726:HOH:O	2.01	0.43
1:A:59[A]:LEU:HD13	1:A:204:LEU:HA	2.00	0.43
1:A:357:VAL:HG12	1:A:395:GLN:HG3	2.01	0.43
1:A:153:CYS:O	1:A:157:VAL:HG23	2.18	0.43
1:A:33:ILE:HB	1:A:34:PRO:HD2	2.01	0.42
1:A:317:SER:O	1:A:318:PRO:C	2.60	0.42
1:A:25[A]:MET:HB3	1:A:133:LEU:HD21	2.00	0.42
1:A:248[A]:ARG:HD3	1:A:266:LEU:HD22	2.00	0.42
1:A:248[A]:ARG:HD3	1:A:266:LEU:CD2	2.50	0.42
1:A:368:HIS:HB2	1:A:398:ARG:HB3	2.01	0.42
1:A:22:LEU:HG	1:A:70:ALA:HB2	2.00	0.42
1:A:356:MET:HE1	7:A:591:HOH:O	2.20	0.42
1:A:49:GLU:HB2	1:A:398:ARG:NH2	2.34	0.41
1:A:85:ASN:HA	1:A:86:PRO:HD2	1.93	0.41
1:A:2:ALA:HB3	1:A:4:GLU:H	1.85	0.41
1:A:27:ASN:O	1:A:31:GLY:N	2.42	0.41
1:A:282:MET:HG3	1:A:336:TYR:CZ	2.55	0.41
1:A:267:ARG:O	1:A:270:GLU:HB2	2.21	0.41
1:A:208:SER:HA	1:A:209:PRO:HA	1.80	0.41
1:A:375:TYR:O	1:A:376:GLU:C	2.65	0.40

All (1) symmetry-related close contacts are listed below. The label for Atom-2 includes the symmetry operator and encoded unit-cell translations to be applied.

Atom-1	Atom-2	Interatomic distance (Å)	Clash overlap (Å)
7:A:662:HOH:O	7:A:713:HOH:O[2_655]	2.19	0.01

## 5.3 Torsion angles [\(i\)](#)

### 5.3.1 Protein backbone [\(i\)](#)

In the following table, the Percentiles column shows the percent Ramachandran outliers of the chain as a percentile score with respect to all X-ray entries followed by that with respect to entries of similar resolution.

The Analysed column shows the number of residues for which the backbone conformation was analysed, and the total number of residues.

Mol	Chain	Analysed	Favoured	Allowed	Outliers	Percentiles	
1	A	449/478 (94%)	434 (97%)	15 (3%)	0	100	100

There are no Ramachandran outliers to report.

### 5.3.2 Protein sidechains [i](#)

In the following table, the Percentiles column shows the percent sidechain outliers of the chain as a percentile score with respect to all X-ray entries followed by that with respect to entries of similar resolution.

The Analysed column shows the number of residues for which the sidechain conformation was analysed, and the total number of residues.

Mol	Chain	Analysed	Rotameric	Outliers	Percentiles	
1	A	387/407 (95%)	354 (92%)	33 (8%)	10	1

All (33) residues with a non-rotameric sidechain are listed below:

Mol	Chain	Res	Type
1	A	4	GLU
1	A	9	ARG
1	A	10	ARG
1	A	15	GLU
1	A	18	ARG
1	A	21	LYS
1	A	25[A]	MET
1	A	25[B]	MET
1	A	35	LYS
1	A	39	ARG
1	A	65	GLN
1	A	75	LYS
1	A	94	SER
1	A	101	ASP
1	A	103	THR
1	A	104	LYS
1	A	125[A]	SER
1	A	125[B]	SER
1	A	208	SER
1	A	219	SER
1	A	256	LYS
1	A	258	LYS
1	A	282	MET

*Continued on next page...*

*Continued from previous page...*

Mol	Chain	Res	Type
1	A	302[A]	ARG
1	A	302[B]	ARG
1	A	309	GLU
1	A	321	GLN
1	A	347	LYS
1	A	354	GLU
1	A	416	LYS
1	A	426	LYS
1	A	440	LYS
1	A	441	GLN

Sometimes sidechains can be flipped to improve hydrogen bonding and reduce clashes. All (5) such sidechains are listed below:

Mol	Chain	Res	Type
1	A	16	HIS
1	A	27	ASN
1	A	65	GLN
1	A	109	ASN
1	A	239	HIS

### 5.3.3 RNA [i](#)

There are no RNA molecules in this entry.

### 5.4 Non-standard residues in protein, DNA, RNA chains [i](#)

There are no non-standard protein/DNA/RNA residues in this entry.

### 5.5 Carbohydrates [i](#)

There are no oligosaccharides in this entry.

### 5.6 Ligand geometry [i](#)

Of 5 ligands modelled in this entry, 3 are monoatomic - leaving 2 for Mogul analysis.

In the following table, the Counts columns list the number of bonds (or angles) for which Mogul statistics could be retrieved, the number of bonds (or angles) that are observed in the model and the number of bonds (or angles) that are defined in the Chemical Component Dictionary. The

Link column lists molecule types, if any, to which the group is linked. The Z score for a bond length (or angle) is the number of standard deviations the observed value is removed from the expected value. A bond length (or angle) with  $|Z| > 2$  is considered an outlier worth inspection. RMSZ is the root-mean-square of all Z scores of the bond lengths (or angles).

Mol	Type	Chain	Res	Link	Bond lengths			Bond angles		
					Counts	RMSZ	# Z  > 2	Counts	RMSZ	# Z  > 2
2	NG1	A	459	3	18,19,19	1.45	3 (16%)	28,28,28	1.53	4 (14%)
6	ADP	A	463	3	28,29,29	1.02	1 (3%)	43,45,45	1.21	4 (9%)

In the following table, the Chirals column lists the number of chiral outliers, the number of chiral centers analysed, the number of these observed in the model and the number defined in the Chemical Component Dictionary. Similar counts are reported in the Torsion and Rings columns. '2' means no outliers of that kind were identified.

Mol	Type	Chain	Res	Link	Chirals	Torsions	Rings
2	NG1	A	459	3	-	3/10/31/31	0/1/1/1
6	ADP	A	463	3	-	3/16/32/32	0/3/3/3

All (4) bond length outliers are listed below:

Mol	Chain	Res	Type	Atoms	Z	Observed(Å)	Ideal(Å)
2	A	459	NG1	C1-C2	3.49	1.58	1.53
6	A	463	ADP	C6-N6	-3.07	1.26	1.34
2	A	459	NG1	P1-O1	2.64	1.64	1.59
2	A	459	NG1	P1-OP1	2.06	1.62	1.54

All (8) bond angle outliers are listed below:

Mol	Chain	Res	Type	Atoms	Z	Observed(°)	Ideal(°)
2	A	459	NG1	O5-C1-O1	-5.01	104.82	111.36
6	A	463	ADP	C2-N1-C6	3.69	124.80	118.73
6	A	463	ADP	C5-C6-N1	-2.93	110.07	117.51
2	A	459	NG1	O1-C1-C2	2.60	113.10	108.40
6	A	463	ADP	C6-C5-C4	2.55	120.66	117.18
2	A	459	NG1	OP2-P1-OP3	-2.08	102.72	110.83
2	A	459	NG1	C8-C7-N2	2.08	119.57	116.12
6	A	463	ADP	C2'-C1'-N9	-2.06	108.17	113.30

There are no chirality outliers.

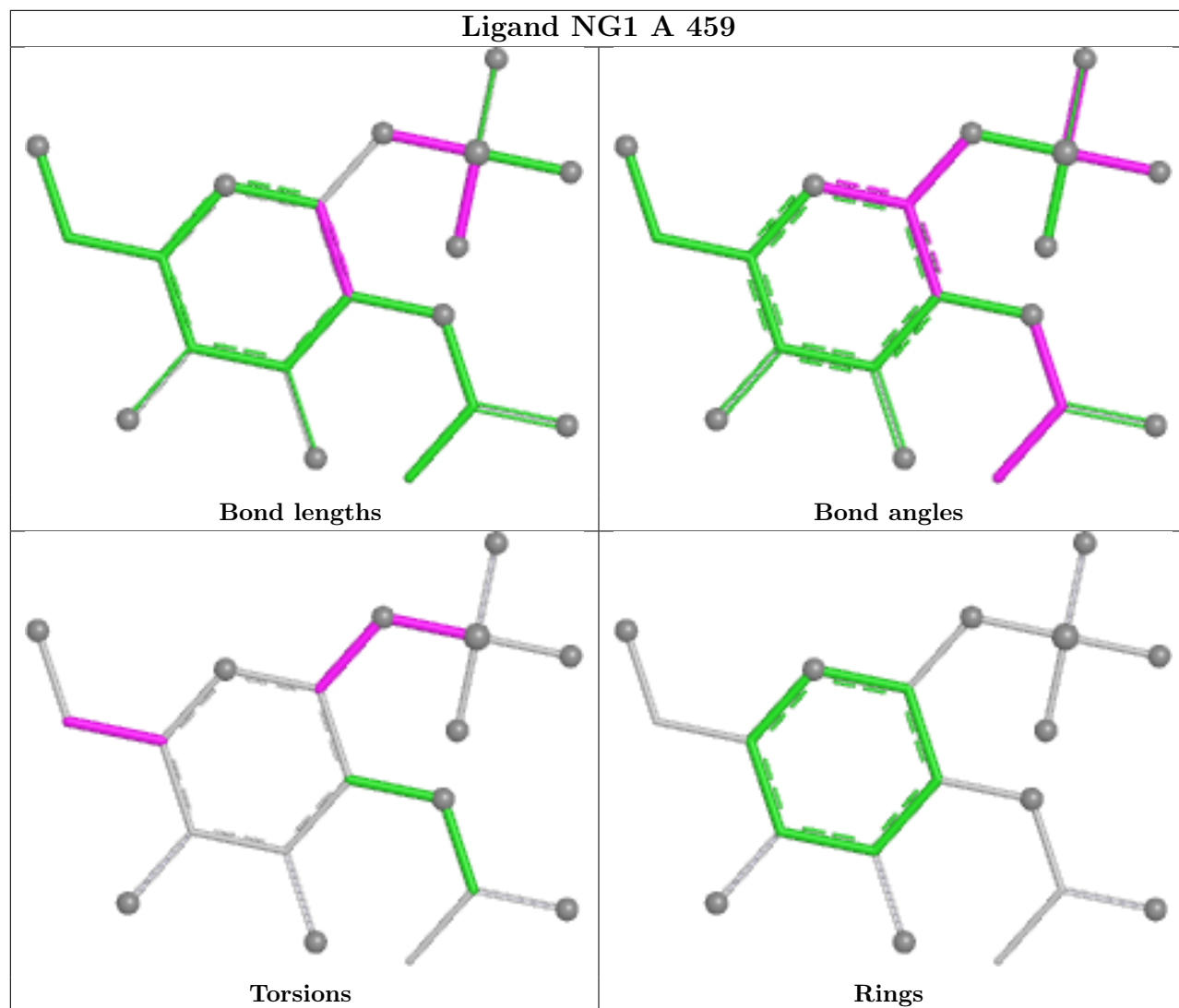
All (6) torsion outliers are listed below:

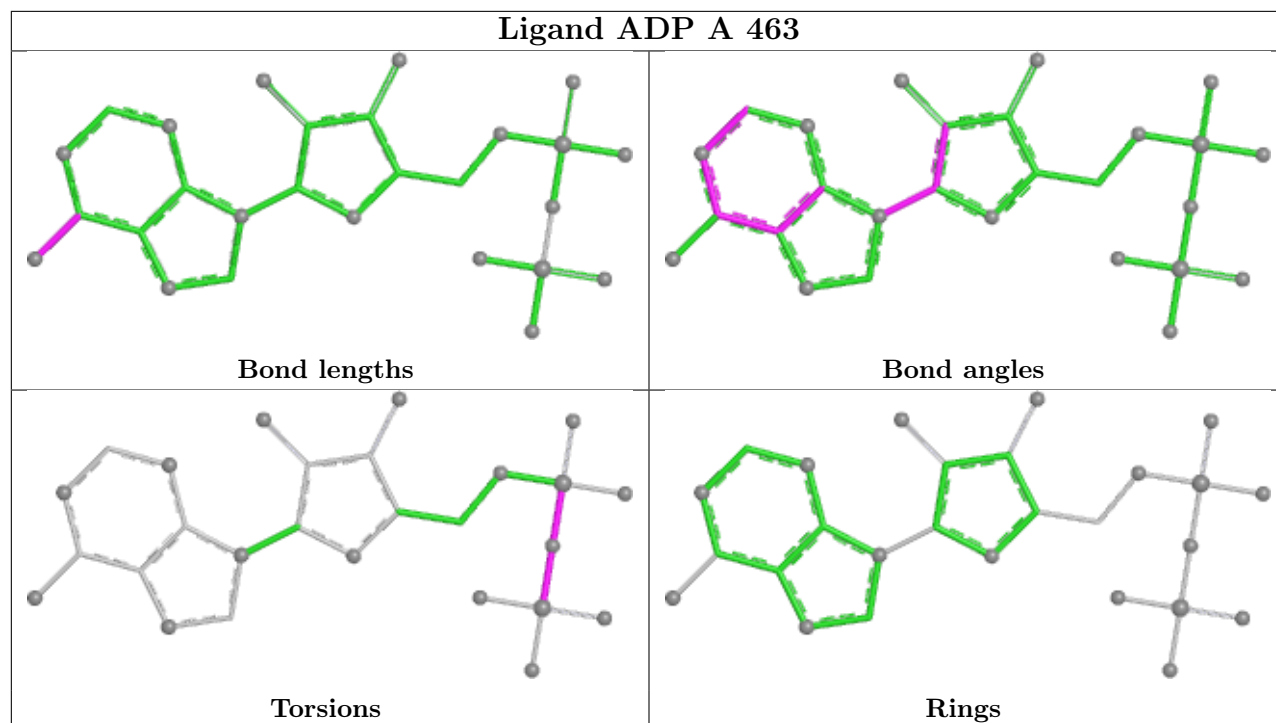
Mol	Chain	Res	Type	Atoms
2	A	459	NG1	O5-C5-C6-O6
6	A	463	ADP	PB-O3A-PA-O1A
2	A	459	NG1	O5-C1-O1-P1
6	A	463	ADP	PB-O3A-PA-O2A
6	A	463	ADP	PA-O3A-PB-O2B
2	A	459	NG1	C1-O1-P1-OP3

There are no ring outliers.

No monomer is involved in short contacts.

The following is a two-dimensional graphical depiction of Mogul quality analysis of bond lengths, bond angles, torsion angles, and ring geometry for all instances of the Ligand of Interest. In addition, ligands with molecular weight > 250 and outliers as shown on the validation Tables will also be included. For torsion angles, if less than 5% of the Mogul distribution of torsion angles is within 10 degrees of the torsion angle in question, then that torsion angle is considered an outlier. Any bond that is central to one or more torsion angles identified as an outlier by Mogul will be highlighted in the graph. For rings, the root-mean-square deviation (RMSD) between the ring in question and similar rings identified by Mogul is calculated over all ring torsion angles. If the average RMSD is greater than 60 degrees and the minimal RMSD between the ring in question and any Mogul-identified rings is also greater than 60 degrees, then that ring is considered an outlier. The outliers are highlighted in purple. The color gray indicates Mogul did not find sufficient equivalents in the CSD to analyse the geometry.





## 5.7 Other polymers [i](#)

There are no such residues in this entry.

## 5.8 Polymer linkage issues [i](#)

There are no chain breaks in this entry.

## 6 Fit of model and data [i](#)

### 6.1 Protein, DNA and RNA chains [i](#)

In the following table, the column labelled ‘#RSRZ > 2’ contains the number (and percentage) of RSRZ outliers, followed by percent RSRZ outliers for the chain as percentile scores relative to all X-ray entries and entries of similar resolution. The OWAB column contains the minimum, median, 95<sup>th</sup> percentile and maximum values of the occupancy-weighted average B-factor per residue. The column labelled ‘Q < 0.9’ lists the number of (and percentage) of residues with an average occupancy less than 0.9.

Mol	Chain	Analysed	<RSRZ>	#RSRZ>2	OWAB(Å <sup>2</sup> )	Q<0.9
1	A	446/478 (93%)	-0.21	19 (4%) 40 43	10, 23, 57, 91	9 (2%)

All (19) RSRZ outliers are listed below:

Mol	Chain	Res	Type	RSRZ
1	A	15	GLU	4.3
1	A	103	THR	4.2
1	A	97	ASN	4.1
1	A	2	ALA	3.8
1	A	101	ASP	3.7
1	A	441	GLN	3.1
1	A	14	ALA	3.1
1	A	100	ILE	2.9
1	A	20	LEU	2.8
1	A	102	LYS	2.8
1	A	12	GLN	2.6
1	A	263	ASP	2.4
1	A	430	GLN	2.3
1	A	440	LYS	2.3
1	A	458	ALA	2.2
1	A	76	THR	2.2
1	A	77	TYR	2.1
1	A	3	THR	2.0
1	A	17	PRO	2.0

### 6.2 Non-standard residues in protein, DNA, RNA chains [i](#)

There are no non-standard protein/DNA/RNA residues in this entry.

### 6.3 Carbohydrates [i](#)

There are no oligosaccharides in this entry.

### 6.4 Ligands [i](#)

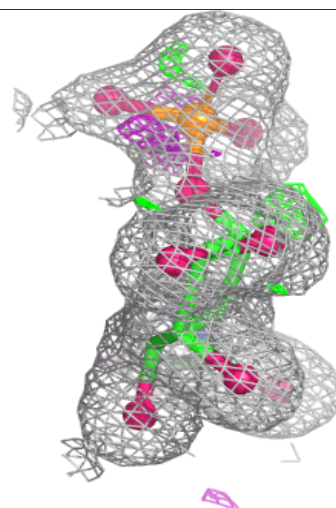
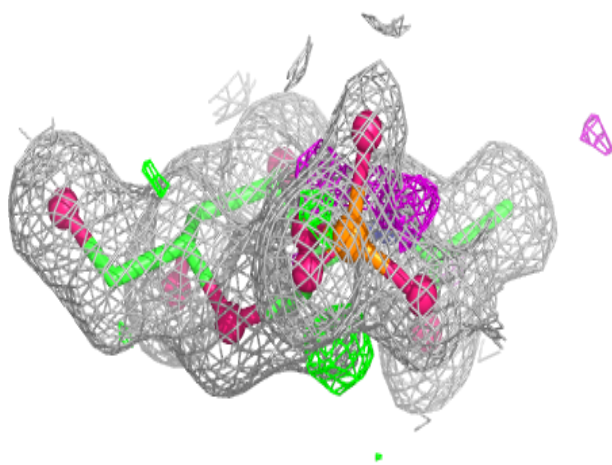
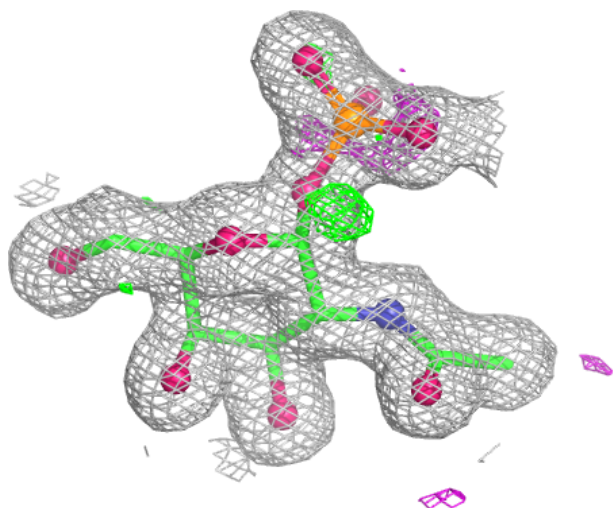
In the following table, the Atoms column lists the number of modelled atoms in the group and the number defined in the chemical component dictionary. The B-factors column lists the minimum, median, 95<sup>th</sup> percentile and maximum values of B factors of atoms in the group. The column labelled 'Q< 0.9' lists the number of atoms with occupancy less than 0.9.

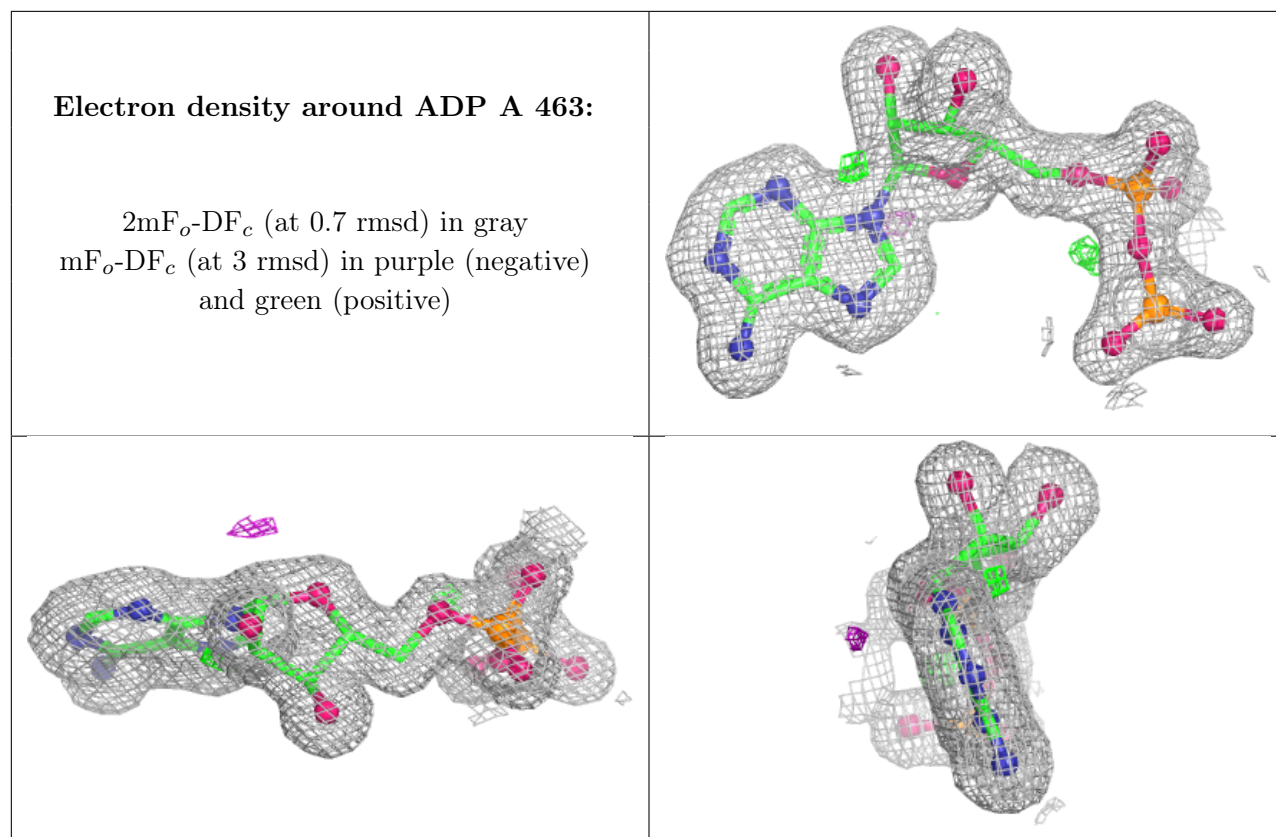
Mol	Type	Chain	Res	Atoms	RSCC	RSR	B-factors(Å <sup>2</sup> )	Q<0.9
5	NA	A	462	1/1	0.94	0.09	56,56,56,56	0
2	NG1	A	459	19/19	0.98	0.05	10,13,27,36	0
4	CL	A	461	1/1	0.99	0.03	26,26,26,26	0
6	ADP	A	463	27/27	0.99	0.03	12,16,19,23	0
3	MG	A	460	1/1	1.00	0.03	9,9,9,9	0

The following is a graphical depiction of the model fit to experimental electron density of all instances of the Ligand of Interest. In addition, ligands with molecular weight > 250 and outliers as shown on the geometry validation Tables will also be included. Each fit is shown from different orientation to approximate a three-dimensional view.

**Electron density around NG1 A 459:**

$2mF_o-DF_c$  (at 0.7 rmsd) in gray  
 $mF_o-DF_c$  (at 3 rmsd) in purple (negative)  
and green (positive)





## 6.5 Other polymers [i](#)

There are no such residues in this entry.