



Full wwPDB X-ray Structure Validation Report ⓘ

Mar 8, 2026 – 09:04 AM UTC

PDB ID : 3A21 / pdb_00003a21
Title : Crystal Structure of Streptomyces avermitilis beta-L-Arabinopyranosidase
Authors : Fujimoto, Z.; Ichinose, H.; Kaneko, S.
Deposited on : 2009-04-27
Resolution : 1.51 Å(reported)

This is a Full wwPDB X-ray Structure Validation Report for a publicly released PDB entry.

We welcome your comments at validation@mail.wwpdb.org

A user guide is available at

<https://www.wwpdb.org/validation/2017/XrayValidationReportHelp>

with specific help available everywhere you see the ⓘ symbol.

The types of validation reports are described at

<http://www.wwpdb.org/validation/2017/FAQs#types>.

The following versions of software and data (see [references ⓘ](#)) were used in the production of this report:

MolProbity : 4-5-2 with Phenix2.0
Mogul : 2022.3.0, CSD as543be (2022)
Xtriage (Phenix) : 2.0
EDS : 3.0
Buster-report : wwPDB partial adaption of 1.1.7 (2018)
Percentile statistics : 20250101.v01 (using entries in the PDB archive January 1st 2025)
CCP4 : 9.0.010 (Gargrove)
Density-Fitness : 1.0.12
Ideal geometry (proteins) : Engh & Huber (2001)
Ideal geometry (DNA, RNA) : Parkinson et al. (1996)
Validation Pipeline (wwPDB-VP) : 2.49

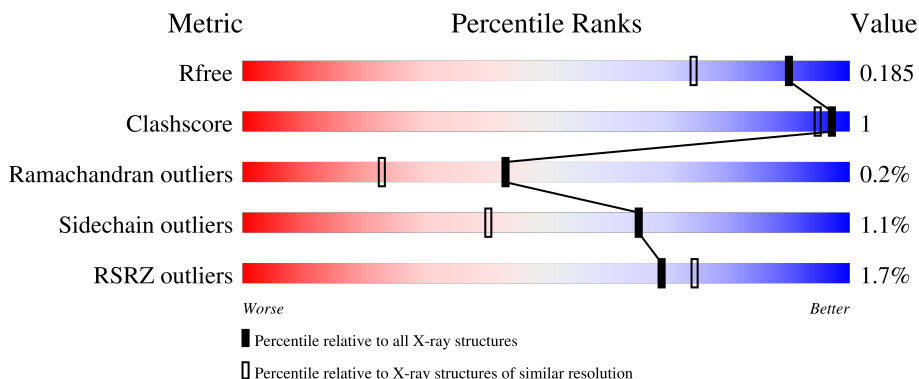
1 Overall quality at a glance i

The following experimental techniques were used to determine the structure:

X-RAY DIFFRACTION

The reported resolution of this entry is 1.51 Å.

Percentile scores (ranging between 0-100) for global validation metrics of the entry are shown in the following graphic. The table shows the number of entries on which the scores are based.



Metric	Whole archive (#Entries)	Similar resolution (#Entries, resolution range(Å))
R_{free}	180053	5890 (1.54-1.50)
Clashscore	190562	6116 (1.54-1.50)
Ramachandran outliers	187476	6002 (1.54-1.50)
Sidechain outliers	187428	5999 (1.54-1.50)
RSRZ outliers	180081	5891 (1.54-1.50)

The table below summarises the geometric issues observed across the polymeric chains and their fit to the electron density. The red, orange, yellow and green segments of the lower bar indicate the fraction of residues that contain outliers for ≥ 3 , 2, 1 and 0 types of geometric quality criteria respectively. A grey segment represents the fraction of residues that are not modelled. The numeric value for each fraction is indicated below the corresponding segment, with a dot representing fractions $\leq 5\%$. The upper red bar (where present) indicates the fraction of residues that have poor fit to the electron density. The numeric value is given above the bar.

Mol	Chain	Length	Quality of chain
1	A	614	 97%
1	B	614	 97%

2 Entry composition [i](#)

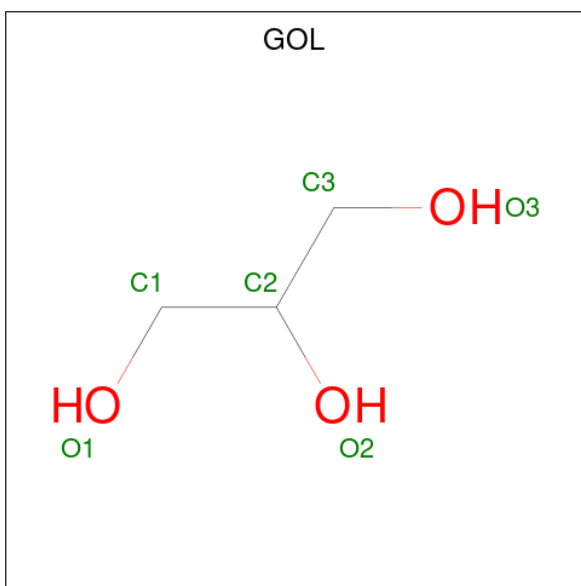
There are 6 unique types of molecules in this entry. The entry contains 11281 atoms, of which 0 are hydrogens and 0 are deuteriums.

In the tables below, the ZeroOcc column contains the number of atoms modelled with zero occupancy, the AltConf column contains the number of residues with at least one atom in alternate conformation and the Trace column contains the number of residues modelled with at most 2 atoms.

- Molecule 1 is a protein called Putative secreted alpha-galactosidase.

Mol	Chain	Residues	Atoms					ZeroOcc	AltConf	Trace
			Total	C	N	O	S			
1	A	614	4583	2844	790	929	20	0	17	0
1	B	612	4588	2844	791	933	20	0	18	0

- Molecule 2 is GLYCEROL (CCD ID: GOL) (formula: C₃H₈O₃).



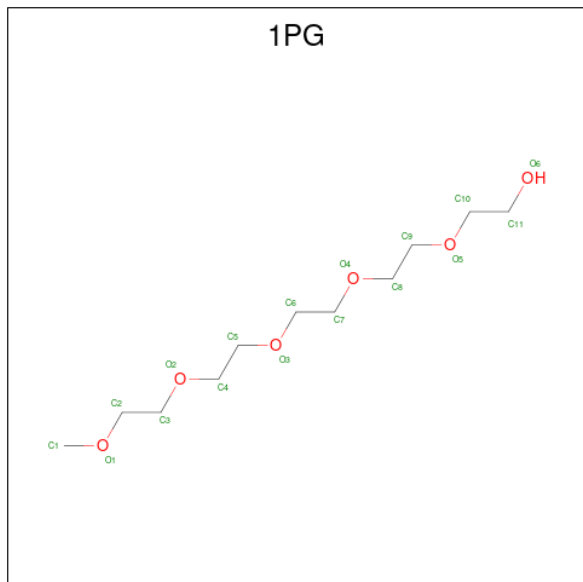
Mol	Chain	Residues	Atoms			ZeroOcc	AltConf
			Total	C	O		
2	A	1	6	3	3	0	0
2	A	1	12	6	6	0	1
2	A	1	6	3	3	0	0
2	A	1	6	3	3	0	0

Continued on next page...

Continued from previous page...

Mol	Chain	Residues	Atoms			ZeroOcc	AltConf
2	A	1	Total 6	C 3	O 3	0	0
2	A	1	Total 6	C 3	O 3	0	0
2	A	1	Total 6	C 3	O 3	0	0
2	A	1	Total 6	C 3	O 3	0	0
2	A	1	Total 6	C 3	O 3	0	0
2	A	1	Total 7	C 3	O 4	0	1
2	A	1	Total 6	C 3	O 3	0	0
2	A	1	Total 6	C 3	O 3	0	0
2	B	1	Total 6	C 3	O 3	0	0
2	B	1	Total 12	C 6	O 6	0	1
2	B	1	Total 7	C 3	O 4	0	1
2	B	1	Total 6	C 3	O 3	0	0
2	B	1	Total 6	C 3	O 3	0	0
2	B	1	Total 6	C 3	O 3	0	0
2	B	1	Total 6	C 3	O 3	0	0
2	B	1	Total 6	C 3	O 3	0	0
2	B	1	Total 6	C 3	O 3	0	0
2	B	1	Total 6	C 3	O 3	0	0
2	B	1	Total 6	C 3	O 3	0	0
2	B	1	Total 6	C 3	O 3	0	0
2	B	1	Total 6	C 3	O 3	0	0
2	B	1	Total 6	C 3	O 3	0	0
2	B	1	Total 6	C 3	O 3	0	0

- Molecule 3 is 2-(2-{2-[2-(2-METHOXY-ETHOXY)-ETHOXY]-ETHOXY}-ETHOXY)-ETHANOL (CCD ID: 1PG) (formula: C₁₁H₂₄O₆).



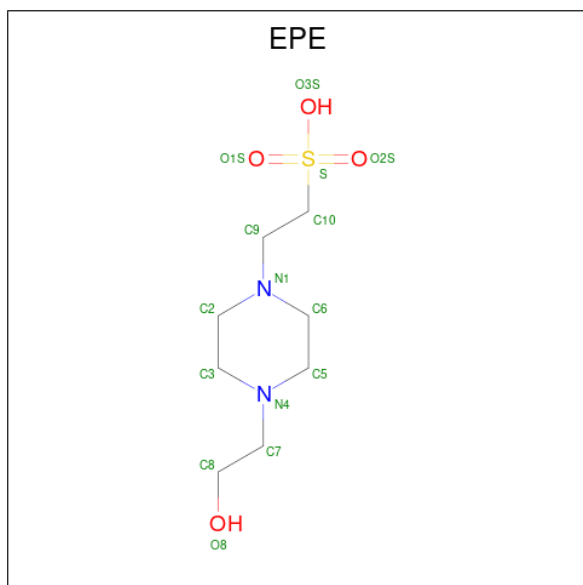
Mol	Chain	Residues	Atoms			ZeroOcc	AltConf
3	A	1	Total	C	O	0	0
			16	10	6		
3	A	1	Total	C	O	0	0
			16	10	6		
3	B	1	Total	C	O	0	0
			16	10	6		
3	B	1	Total	C	O	0	0
			16	10	6		

- Molecule 4 is SULFATE ION (CCD ID: SO4) (formula: O₄S).



Mol	Chain	Residues	Atoms	ZeroOcc	AltConf
4	A	1	Total O S 5 4 1	0	0
4	A	1	Total O S 5 4 1	0	0
4	A	1	Total O S 5 4 1	0	0
4	A	1	Total O S 5 4 1	0	0
4	A	1	Total O S 5 4 1	0	0
4	B	1	Total O S 5 4 1	0	0
4	B	1	Total O S 5 4 1	0	0
4	B	1	Total O S 5 4 1	0	0

- Molecule 5 is 4-(2-HYDROXYETHYL)-1-PIPERAZINE ETHANESULFONIC ACID (CCD ID: EPE) (formula: C₈H₁₈N₂O₄S).



Mol	Chain	Residues	Atoms					ZeroOcc	AltConf
			Total	C	N	O	S		
5	B	1	15	8	2	4	1	0	0

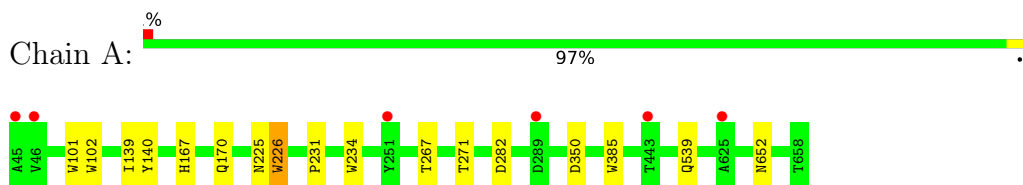
- Molecule 6 is water.

Mol	Chain	Residues	Atoms		ZeroOcc	AltConf
6	A	951	Total	O	0	0
			951	951		
6	B	876	Total	O	0	0
			876	876		

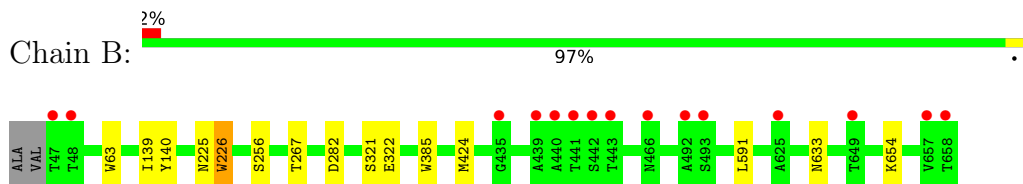
3 Residue-property plots [i](#)

These plots are drawn for all protein, RNA, DNA and oligosaccharide chains in the entry. The first graphic for a chain summarises the proportions of the various outlier classes displayed in the second graphic. The second graphic shows the sequence view annotated by issues in geometry and electron density. Residues are color-coded according to the number of geometric quality criteria for which they contain at least one outlier: green = 0, yellow = 1, orange = 2 and red = 3 or more. A red dot above a residue indicates a poor fit to the electron density ($RSRZ > 2$). Stretches of 2 or more consecutive residues without any outlier are shown as a green connector. Residues present in the sample, but not in the model, are shown in grey.

- Molecule 1: Putative secreted alpha-galactosidase



- Molecule 1: Putative secreted alpha-galactosidase



4 Data and refinement statistics

Property	Value	Source
Space group	P 21 21 21	Depositor
Cell constants a, b, c, α , β , γ	68.20Å 98.92Å 181.26Å 90.00° 90.00° 90.00°	Depositor
Resolution (Å)	33.37 – 1.51 33.37 – 1.51	Depositor EDS
% Data completeness (in resolution range)	98.9 (33.37-1.51) 99.0 (33.37-1.51)	Depositor EDS
R_{merge}	0.09	Depositor
R_{sym}	(Not available)	Depositor
$\langle I/\sigma(I) \rangle$ ¹	1.43 (at 1.50Å)	Xtrriage
Refinement program	REFMAC 5.5.0088	Depositor
R, R_{free}	0.157 , 0.179 (Not available) , 0.185	Depositor DCC
R_{free} test set	9648 reflections (4.98%)	wwPDB-VP
Wilson B-factor (Å ²)	11.0	Xtrriage
Anisotropy	0.046	Xtrriage
Bulk solvent k_{sol} (e/Å ³), B_{sol} (Å ²)	0.38 , 49.1	EDS
L-test for twinning ²	$\langle L \rangle = 0.49$, $\langle L^2 \rangle = 0.32$	Xtrriage
Estimated twinning fraction	No twinning to report.	Xtrriage
F_o, F_c correlation	0.97	EDS
Total number of atoms	11281	wwPDB-VP
Average B, all atoms (Å ²)	13.0	wwPDB-VP

Xtrriage's analysis on translational NCS is as follows: *The largest off-origin peak in the Patterson function is 3.42% of the height of the origin peak. No significant pseudotranslation is detected.*

¹Intensities estimated from amplitudes.

²Theoretical values of $\langle |L| \rangle$, $\langle L^2 \rangle$ for acentric reflections are 0.5, 0.333 respectively for untwinned datasets, and 0.375, 0.2 for perfectly twinned datasets.

5 Model quality [i](#)

5.1 Standard geometry [i](#)

Bond lengths and bond angles in the following residue types are not validated in this section: GOL, EPE, SO4, 1PG

The Z score for a bond length (or angle) is the number of standard deviations the observed value is removed from the expected value. A bond length (or angle) with $|Z| > 5$ is considered an outlier worth inspection. RMSZ is the root-mean-square of all Z scores of the bond lengths (or angles).

Mol	Chain	Bond lengths		Bond angles	
		RMSZ	# Z >5	RMSZ	# Z >5
1	A	0.44	0/4743	0.67	0/6492
1	B	0.43	0/4741	0.66	1/6488 (0.0%)
All	All	0.43	0/9484	0.66	1/12980 (0.0%)

There are no bond length outliers.

All (1) bond angle outliers are listed below:

Mol	Chain	Res	Type	Atoms	Z	Observed(°)	Ideal(°)
1	B	63	TRP	N-CA-C	5.36	116.92	111.14

There are no chirality outliers.

There are no planarity outliers.

5.2 Too-close contacts [i](#)

In the following table, the Non-H and H(model) columns list the number of non-hydrogen atoms and hydrogen atoms in the chain respectively. The H(added) column lists the number of hydrogen atoms added and optimized by MolProbity. The Clashes column lists the number of clashes within the asymmetric unit, whereas Symm-Clashes lists symmetry-related clashes.

Mol	Chain	Non-H	H(model)	H(added)	Clashes	Symm-Clashes
1	A	4583	0	4368	8	0
1	B	4588	0	4354	9	0
2	A	79	0	102	4	0
2	B	85	0	110	6	0
3	A	32	0	42	0	0
3	B	32	0	42	0	0
4	A	25	0	0	0	0
4	B	15	0	0	0	0

Continued on next page...

Continued from previous page...

Mol	Chain	Non-H	H(model)	H(added)	Clashes	Symm-Clashes
5	B	15	0	17	0	0
6	A	951	0	0	0	0
6	B	876	0	0	1	0
All	All	11281	0	9035	17	0

The all-atom clashscore is defined as the number of clashes found per 1000 atoms (including hydrogen atoms). The all-atom clashscore for this structure is 1.

All (17) close contacts within the same asymmetric unit are listed below, sorted by their clash magnitude.

Atom-1	Atom-2	Interatomic distance (Å)	Clash overlap (Å)
1:B:654:LYS:HE3	6:B:1150:HOH:O	2.01	0.60
1:A:167:HIS:HD2	1:A:170:GLN:OE1	1.89	0.55
1:B:321:SER:N	2:B:916:GOL:H32	2.24	0.52
1:A:139:ILE:HG13	1:A:140:TYR:H	1.74	0.52
1:B:322:GLU:H	2:B:916:GOL:C3	2.24	0.50
1:B:322:GLU:H	2:B:916:GOL:H32	1.77	0.48
1:B:256:SER:HA	2:B:933:GOL:H11	1.96	0.47
2:A:926:GOL:H32	1:B:591:LEU:HD22	1.97	0.47
1:B:139:ILE:HG13	1:B:140:TYR:H	1.82	0.45
1:A:271:THR:OG1	2:A:914:GOL:H31	2.17	0.45
1:A:231:PRO:HA	1:A:234:TRP:CE2	2.52	0.44
1:A:539[B]:GLN:OE1	1:A:652:ASN:HB3	2.17	0.44
1:A:350:ASP:HB2	2:A:915:GOL:H12	1.99	0.44
1:A:226:TRP:CE2	2:A:919:GOL:H12	2.53	0.43
1:B:226:TRP:CE2	2:B:928:GOL:H31	2.55	0.42
1:B:226:TRP:CD2	2:B:928:GOL:H31	2.55	0.42
1:A:101:TRP:CE3	1:A:102:TRP:HB2	2.55	0.41

There are no symmetry-related clashes.

5.3 Torsion angles [i](#)

5.3.1 Protein backbone [i](#)

In the following table, the Percentiles column shows the percent Ramachandran outliers of the chain as a percentile score with respect to all X-ray entries followed by that with respect to entries of similar resolution.

The Analysed column shows the number of residues for which the backbone conformation was analysed, and the total number of residues.

Mol	Chain	Analysed	Favoured	Allowed	Outliers	Percentiles	
1	A	629/614 (102%)	614 (98%)	14 (2%)	1 (0%)	43	23
1	B	628/614 (102%)	613 (98%)	14 (2%)	1 (0%)	43	23
All	All	1257/1228 (102%)	1227 (98%)	28 (2%)	2 (0%)	43	23

All (2) Ramachandran outliers are listed below:

Mol	Chain	Res	Type
1	A	282	ASP
1	B	282	ASP

5.3.2 Protein sidechains [i](#)

In the following table, the Percentiles column shows the percent sidechain outliers of the chain as a percentile score with respect to all X-ray entries followed by that with respect to entries of similar resolution.

The Analysed column shows the number of residues for which the sidechain conformation was analysed, and the total number of residues.

Mol	Chain	Analysed	Rotameric	Outliers	Percentiles	
1	A	483/468 (103%)	479 (99%)	4 (1%)	73	53
1	B	483/468 (103%)	476 (99%)	7 (1%)	59	31
All	All	966/936 (103%)	955 (99%)	11 (1%)	65	40

All (11) residues with a non-rotameric sidechain are listed below:

Mol	Chain	Res	Type
1	A	225	ASN
1	A	226	TRP
1	A	267	THR
1	A	385	TRP
1	B	225	ASN
1	B	226	TRP
1	B	267	THR
1	B	385	TRP
1	B	424[A]	MET
1	B	424[B]	MET
1	B	633	ASN

Sometimes sidechains can be flipped to improve hydrogen bonding and reduce clashes. All (9) such sidechains are listed below:

Mol	Chain	Res	Type
1	A	167	HIS
1	A	225	ASN
1	A	337	GLN
1	A	366	ASN
1	A	392	ASN
1	A	607	GLN
1	B	225	ASN
1	B	405	ASN
1	B	607	GLN

5.3.3 RNA [i](#)

There are no RNA molecules in this entry.

5.4 Non-standard residues in protein, DNA, RNA chains [i](#)

There are no non-standard protein/DNA/RNA residues in this entry.

5.5 Carbohydrates [i](#)

There are no oligosaccharides in this entry.

5.6 Ligand geometry [i](#)

42 ligands are modelled in this entry.

In the following table, the Counts columns list the number of bonds (or angles) for which Mogul statistics could be retrieved, the number of bonds (or angles) that are observed in the model and the number of bonds (or angles) that are defined in the Chemical Component Dictionary. The Link column lists molecule types, if any, to which the group is linked. The Z score for a bond length (or angle) is the number of standard deviations the observed value is removed from the expected value. A bond length (or angle) with $|Z| > 2$ is considered an outlier worth inspection. RMSZ is the root-mean-square of all Z scores of the bond lengths (or angles).

Mol	Type	Chain	Res	Link	Bond lengths			Bond angles		
					Counts	RMSZ	$\# Z > 2$	Counts	RMSZ	$\# Z > 2$
2	GOL	A	902[B]	-	5,5,5	0.34	0	5,5,5	0.31	0
5	EPE	B	951	-	15,15,15	0.61	0	19,20,20	1.52	2 (10%)
2	GOL	B	916	-	5,5,5	0.43	0	5,5,5	0.62	0
2	GOL	A	925	-	5,5,5	0.41	0	5,5,5	0.32	0
4	SO4	A	977	-	4,4,4	0.27	0	6,6,6	0.17	0
4	SO4	A	976	-	4,4,4	0.24	0	6,6,6	0.12	0

Mol	Type	Chain	Res	Link	Bond lengths			Bond angles		
					Counts	RMSZ	# Z > 2	Counts	RMSZ	# Z > 2
2	GOL	B	920	-	5,5,5	0.36	0	5,5,5	0.22	0
4	SO4	B	973	-	4,4,4	0.24	0	6,6,6	0.12	0
2	GOL	A	919	-	5,5,5	0.38	0	5,5,5	0.37	0
3	1PG	A	962	-	15,15,16	0.44	0	14,14,15	0.30	0
2	GOL	B	906[A]	-	5,5,5	0.39	0	5,5,5	0.23	0
4	SO4	B	972	-	4,4,4	0.23	0	6,6,6	0.13	0
2	GOL	A	914	-	5,5,5	0.37	0	5,5,5	0.42	0
2	GOL	B	905[A]	-	5,5,5	0.35	0	5,5,5	0.28	0
2	GOL	B	918	-	5,5,5	0.41	0	5,5,5	0.43	0
2	GOL	A	926	-	5,5,5	0.37	0	5,5,5	0.29	0
2	GOL	A	903	-	5,5,5	0.42	0	5,5,5	0.23	0
2	GOL	A	921[A]	-	5,5,5	0.35	0	5,5,5	0.44	0
2	GOL	B	913	-	5,5,5	0.37	0	5,5,5	0.07	0
2	GOL	B	904	-	5,5,5	0.34	0	5,5,5	0.40	0
4	SO4	B	974	-	4,4,4	0.27	0	6,6,6	0.22	0
2	GOL	B	931	-	5,5,5	0.37	0	5,5,5	0.37	0
2	GOL	B	906[B]	-	5,5,5	0.39	0	5,5,5	0.23	0
2	GOL	B	929	-	5,5,5	0.34	0	5,5,5	0.49	0
2	GOL	A	902[A]	-	5,5,5	0.38	0	5,5,5	0.23	0
4	SO4	A	978	-	4,4,4	0.26	0	6,6,6	0.11	0
2	GOL	A	915	-	5,5,5	0.45	0	5,5,5	0.10	0
2	GOL	B	905[B]	-	5,5,5	0.36	0	5,5,5	0.32	0
2	GOL	B	924	-	5,5,5	0.34	0	5,5,5	0.48	0
2	GOL	A	917	-	5,5,5	0.36	0	5,5,5	0.39	0
2	GOL	B	933	-	5,5,5	0.37	0	5,5,5	0.33	0
3	1PG	B	965	-	15,15,16	0.49	0	14,14,15	0.20	0
2	GOL	B	928	-	5,5,5	0.39	0	5,5,5	0.42	0
2	GOL	A	901	-	5,5,5	0.34	0	5,5,5	0.23	0
2	GOL	B	932	-	5,5,5	0.38	0	5,5,5	0.31	0
3	1PG	B	963	-	15,15,16	0.47	0	14,14,15	0.23	0
4	SO4	A	971	-	4,4,4	0.27	0	6,6,6	0.17	0
2	GOL	A	921[B]	-	5,5,5	0.32	0	5,5,5	0.35	0
2	GOL	A	912	-	5,5,5	0.34	0	5,5,5	0.53	0
4	SO4	A	975	-	4,4,4	0.24	0	6,6,6	0.10	0
2	GOL	A	911	-	5,5,5	0.43	0	5,5,5	0.15	0
3	1PG	A	964	-	15,15,16	0.46	0	14,14,15	0.31	0

In the following table, the Chirals column lists the number of chiral outliers, the number of chiral centers analysed, the number of these observed in the model and the number defined in the Chemical Component Dictionary. Similar counts are reported in the Torsion and Rings columns. '-' means no outliers of that kind were identified.

Mol	Type	Chain	Res	Link	Chirals	Torsions	Rings
2	GOL	A	902[B]	-	-	0/4/4/4	-
5	EPE	B	951	-	-	0/9/19/19	0/1/1/1
2	GOL	B	916	-	-	2/4/4/4	-
2	GOL	A	925	-	-	2/4/4/4	-
2	GOL	B	920	-	-	0/4/4/4	-
2	GOL	A	919	-	-	0/4/4/4	-
3	1PG	A	962	-	-	5/13/13/14	-
2	GOL	B	906[A]	-	-	0/4/4/4	-
2	GOL	A	914	-	-	2/4/4/4	-
2	GOL	B	905[A]	-	-	0/4/4/4	-
2	GOL	B	918	-	-	0/4/4/4	-
2	GOL	A	926	-	-	0/4/4/4	-
2	GOL	A	903	-	-	0/4/4/4	-
2	GOL	A	921[A]	-	-	0/4/4/4	-
2	GOL	B	913	-	-	0/4/4/4	-
2	GOL	B	904	-	-	0/4/4/4	-
2	GOL	B	931	-	-	2/4/4/4	-
2	GOL	B	906[B]	-	-	0/4/4/4	-
2	GOL	B	929	-	-	2/4/4/4	-
2	GOL	A	902[A]	-	-	0/4/4/4	-
2	GOL	A	915	-	-	0/4/4/4	-
2	GOL	B	905[B]	-	-	0/4/4/4	-
2	GOL	B	924	-	-	0/4/4/4	-
2	GOL	A	917	-	-	0/4/4/4	-
2	GOL	B	933	-	-	2/4/4/4	-
3	1PG	B	965	-	-	4/13/13/14	-
2	GOL	B	928	-	-	3/4/4/4	-
2	GOL	A	901	-	-	0/4/4/4	-
2	GOL	B	932	-	-	4/4/4/4	-
3	1PG	B	963	-	-	3/13/13/14	-
2	GOL	A	921[B]	-	-	0/4/4/4	-
2	GOL	A	912	-	-	0/4/4/4	-
2	GOL	A	911	-	-	1/4/4/4	-
3	1PG	A	964	-	-	5/13/13/14	-

There are no bond length outliers.

All (2) bond angle outliers are listed below:

Mol	Chain	Res	Type	Atoms	Z	Observed(°)	Ideal(°)
5	B	951	EPE	C5-N4-C3	4.26	118.01	108.84

Continued on next page...

Continued from previous page...

Mol	Chain	Res	Type	Atoms	Z	Observed(°)	Ideal(°)
5	B	951	EPE	C7-N4-C3	2.65	118.29	111.24

There are no chirality outliers.

All (37) torsion outliers are listed below:

Mol	Chain	Res	Type	Atoms
2	A	914	GOL	O1-C1-C2-C3
2	A	925	GOL	C1-C2-C3-O3
2	B	928	GOL	O1-C1-C2-C3
2	B	931	GOL	O1-C1-C2-C3
2	A	925	GOL	O2-C2-C3-O3
2	B	916	GOL	O2-C2-C3-O3
2	B	928	GOL	O1-C1-C2-O2
3	A	962	1PG	O1-C2-C3-O2
3	B	963	1PG	O1-C2-C3-O2
2	B	916	GOL	C1-C2-C3-O3
2	B	929	GOL	C1-C2-C3-O3
2	B	932	GOL	O1-C1-C2-C3
2	B	932	GOL	C1-C2-C3-O3
2	B	933	GOL	C1-C2-C3-O3
2	A	914	GOL	O1-C1-C2-O2
2	B	931	GOL	O1-C1-C2-O2
2	B	932	GOL	O2-C2-C3-O3
3	A	964	1PG	O1-C2-C3-O2
2	B	933	GOL	O2-C2-C3-O3
3	A	962	1PG	O3-C6-C7-O4
2	B	929	GOL	O2-C2-C3-O3
2	A	911	GOL	C1-C2-C3-O3
3	B	963	1PG	C8-C9-O5-C10
3	A	962	1PG	C11-C10-O5-C9
3	A	964	1PG	C4-C5-O3-C6
3	A	964	1PG	C5-C4-O2-C3
3	A	962	1PG	C2-C3-O2-C4
3	A	962	1PG	O5-C10-C11-O6
3	B	965	1PG	O4-C8-C9-O5
3	B	963	1PG	C2-C3-O2-C4
3	A	964	1PG	O2-C4-C5-O3
2	B	932	GOL	O1-C1-C2-O2
3	B	965	1PG	C8-C9-O5-C10
2	B	928	GOL	O2-C2-C3-O3
3	B	965	1PG	C11-C10-O5-C9
3	A	964	1PG	O5-C10-C11-O6

Continued on next page...

Continued from previous page...

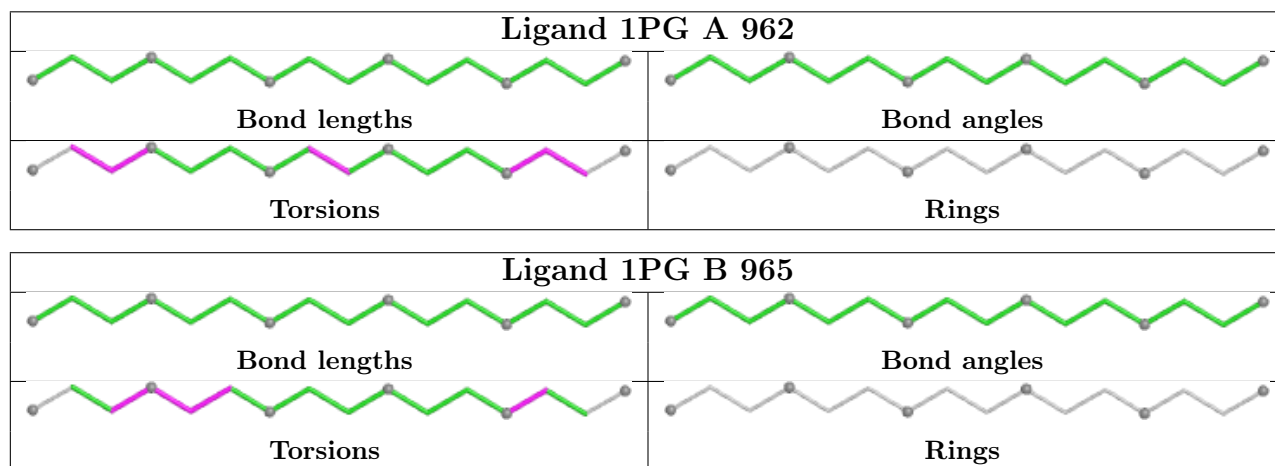
Mol	Chain	Res	Type	Atoms
3	B	965	1PG	C2-C3-O2-C4

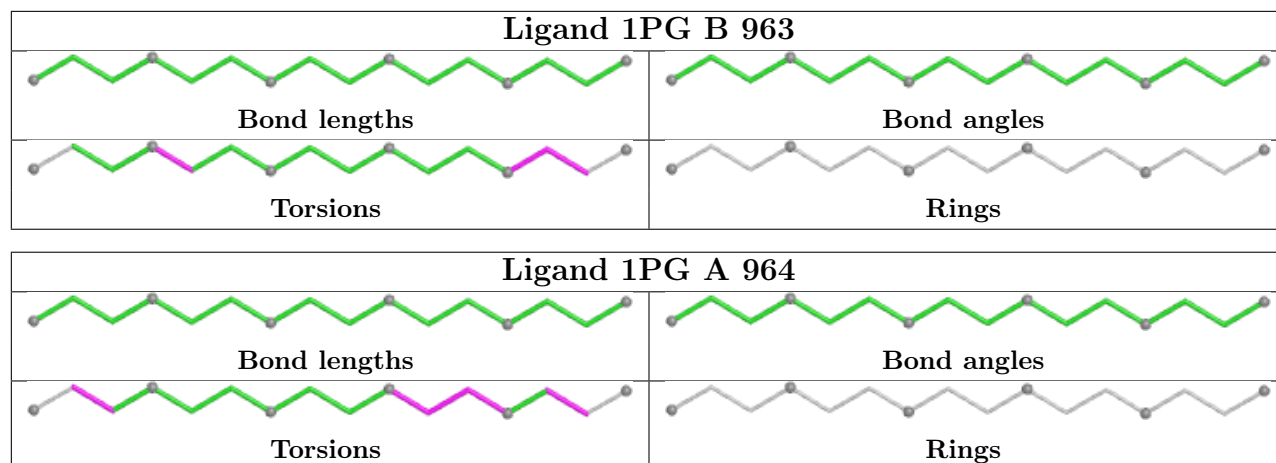
There are no ring outliers.

7 monomers are involved in 10 short contacts:

Mol	Chain	Res	Type	Clashes	Symm-Clashes
2	B	916	GOL	3	0
2	A	919	GOL	1	0
2	A	914	GOL	1	0
2	A	926	GOL	1	0
2	A	915	GOL	1	0
2	B	933	GOL	1	0
2	B	928	GOL	2	0

The following is a two-dimensional graphical depiction of Mogul quality analysis of bond lengths, bond angles, torsion angles, and ring geometry for all instances of the Ligand of Interest. In addition, ligands with molecular weight > 250 and outliers as shown on the validation Tables will also be included. For torsion angles, if less than 5% of the Mogul distribution of torsion angles is within 10 degrees of the torsion angle in question, then that torsion angle is considered an outlier. Any bond that is central to one or more torsion angles identified as an outlier by Mogul will be highlighted in the graph. For rings, the root-mean-square deviation (RMSD) between the ring in question and similar rings identified by Mogul is calculated over all ring torsion angles. If the average RMSD is greater than 60 degrees and the minimal RMSD between the ring in question and any Mogul-identified rings is also greater than 60 degrees, then that ring is considered an outlier. The outliers are highlighted in purple. The color gray indicates Mogul did not find sufficient equivalents in the CSD to analyse the geometry.





5.7 Other polymers [i](#)

There are no such residues in this entry.

5.8 Polymer linkage issues [i](#)

There are no chain breaks in this entry.

6 Fit of model and data

6.1 Protein, DNA and RNA chains

In the following table, the column labelled ‘#RSRZ > 2’ contains the number (and percentage) of RSRZ outliers, followed by percent RSRZ outliers for the chain as percentile scores relative to all X-ray entries and entries of similar resolution. The OWAB column contains the minimum, median, 95th percentile and maximum values of the occupancy-weighted average B-factor per residue. The column labelled ‘Q < 0.9’ lists the number of (and percentage) of residues with an average occupancy less than 0.9.

Mol	Chain	Analysed	<RSRZ>	#RSRZ>2	OWAB(Å ²)	Q<0.9
1	A	614/614 (100%)	-0.41	6 (0%) 79 83	5, 9, 15, 24	17 (2%)
1	B	612/614 (99%)	-0.23	15 (2%) 58 64	6, 10, 18, 28	18 (2%)
All	All	1226/1228 (99%)	-0.32	21 (1%) 69 74	5, 10, 17, 28	35 (2%)

All (21) RSRZ outliers are listed below:

Mol	Chain	Res	Type	RSRZ
1	B	47	THR	4.9
1	A	45	ALA	4.7
1	B	439[A]	ALA	4.3
1	B	440[A]	ALA	4.3
1	A	625	ALA	4.3
1	B	443[A]	THR	4.3
1	A	251	TYR	3.8
1	B	441[A]	THR	3.7
1	A	46	VAL	3.6
1	B	625	ALA	3.4
1	B	658	THR	3.2
1	B	492	ALA	3.2
1	B	493	SER	3.1
1	A	289	ASP	2.5
1	A	443	THR	2.3
1	B	466	ASN	2.3
1	B	48	THR	2.1
1	B	649	THR	2.1
1	B	442[A]	SER	2.1
1	B	435	GLY	2.0
1	B	657	VAL	2.0

6.2 Non-standard residues in protein, DNA, RNA chains [i](#)

There are no non-standard protein/DNA/RNA residues in this entry.

6.3 Carbohydrates [i](#)

There are no oligosaccharides in this entry.

6.4 Ligands [i](#)

In the following table, the Atoms column lists the number of modelled atoms in the group and the number defined in the chemical component dictionary. The B-factors column lists the minimum, median, 95th percentile and maximum values of B factors of atoms in the group. The column labelled 'Q< 0.9' lists the number of atoms with occupancy less than 0.9.

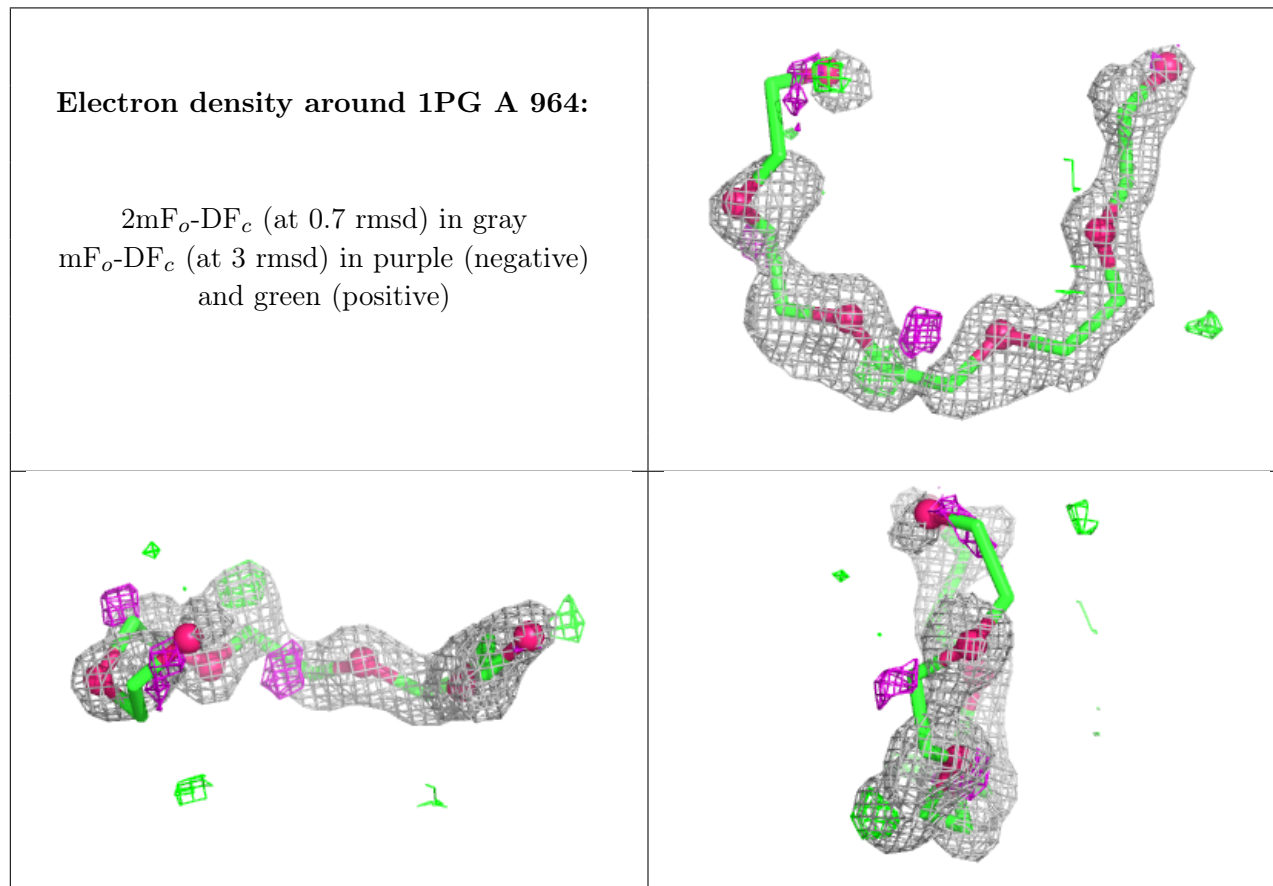
Mol	Type	Chain	Res	Atoms	RSCC	RSR	B-factors(Å ²)	Q<0.9
4	SO4	B	974	5/5	0.64	0.19	28,30,32,32	0
4	SO4	A	977	5/5	0.68	0.18	24,25,28,28	0
3	1PG	A	964	16/17	0.74	0.17	34,36,42,43	0
2	GOL	A	926	6/6	0.74	0.20	42,43,43,43	0
4	SO4	B	973	5/5	0.74	0.19	28,30,31,31	0
2	GOL	B	933	6/6	0.74	0.20	29,30,32,33	0
3	1PG	B	965	16/17	0.75	0.15	28,31,36,37	0
3	1PG	A	962	16/17	0.80	0.17	36,37,37,39	0
2	GOL	A	921[A]	6/6	0.81	0.12	20,22,23,23	1
2	GOL	A	921[B]	6/6	0.81	0.12	21,22,23,23	1
2	GOL	B	931	6/6	0.82	0.15	22,28,30,30	0
4	SO4	A	978	5/5	0.82	0.14	36,37,38,38	0
2	GOL	A	914	6/6	0.83	0.14	19,22,23,23	0
2	GOL	B	932	6/6	0.83	0.16	35,37,37,37	0
3	1PG	B	963	16/17	0.83	0.14	38,40,42,42	0
2	GOL	B	929	6/6	0.83	0.14	22,26,27,27	0
2	GOL	B	924	6/6	0.84	0.12	23,24,24,24	0
4	SO4	A	975	5/5	0.85	0.12	44,44,45,45	0
4	SO4	A	976	5/5	0.85	0.14	38,38,39,39	0
4	SO4	B	972	5/5	0.86	0.11	41,41,41,41	0
2	GOL	B	920	6/6	0.88	0.10	20,23,24,24	0
2	GOL	A	919	6/6	0.88	0.12	18,23,23,25	0
2	GOL	B	928	6/6	0.88	0.10	23,26,26,28	0
2	GOL	B	906[A]	6/6	0.89	0.11	12,15,18,20	1
2	GOL	B	906[B]	6/6	0.89	0.11	15,15,18,20	1
2	GOL	B	918	6/6	0.89	0.11	23,26,27,27	0
4	SO4	A	971	5/5	0.90	0.14	17,19,20,20	0

Continued on next page...

Continued from previous page...

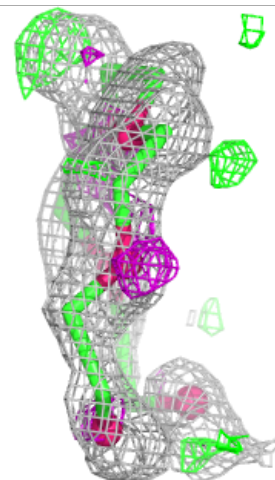
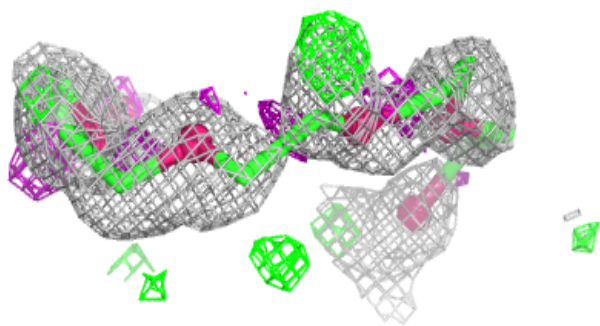
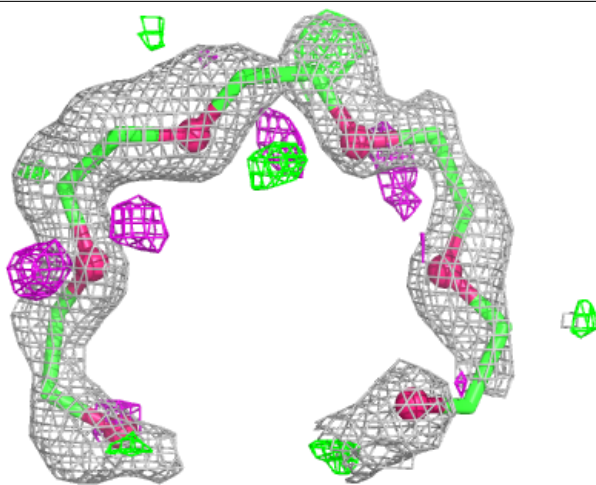
Mol	Type	Chain	Res	Atoms	RSCC	RSR	B-factors(\AA^2)	Q<0.9
2	GOL	B	916	6/6	0.90	0.13	11,15,17,19	0
2	GOL	B	913	6/6	0.91	0.12	19,19,20,20	0
2	GOL	A	925	6/6	0.91	0.11	17,24,25,27	0
2	GOL	B	905[B]	6/6	0.92	0.08	11,11,12,13	6
2	GOL	A	917	6/6	0.92	0.10	20,21,22,22	0
2	GOL	A	911	6/6	0.92	0.08	22,22,23,24	0
2	GOL	A	915	6/6	0.92	0.12	18,18,19,19	0
2	GOL	B	905[A]	6/6	0.92	0.08	13,13,14,14	6
2	GOL	A	912	6/6	0.93	0.10	13,14,15,16	0
2	GOL	A	903	6/6	0.95	0.07	11,12,13,15	0
5	EPE	B	951	15/15	0.95	0.09	14,16,21,23	0
2	GOL	A	902[A]	6/6	0.96	0.05	13,14,15,16	6
2	GOL	A	902[B]	6/6	0.96	0.05	8,9,9,10	6
2	GOL	B	904	6/6	0.97	0.04	8,9,10,11	0
2	GOL	A	901	6/6	0.99	0.03	7,8,9,11	0

The following is a graphical depiction of the model fit to experimental electron density of all instances of the Ligand of Interest. In addition, ligands with molecular weight > 250 and outliers as shown on the geometry validation Tables will also be included. Each fit is shown from different orientation to approximate a three-dimensional view.



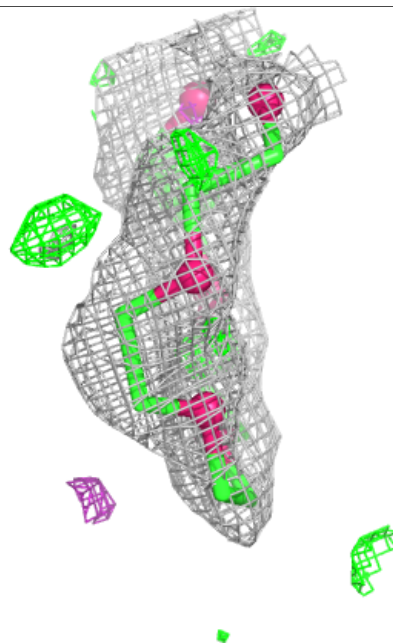
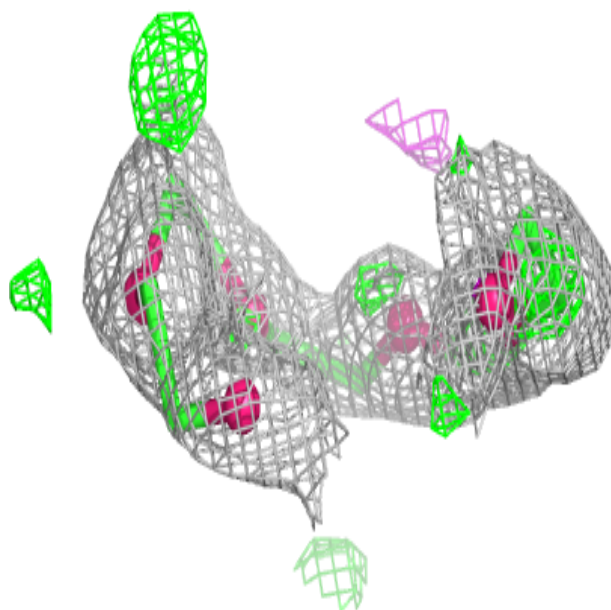
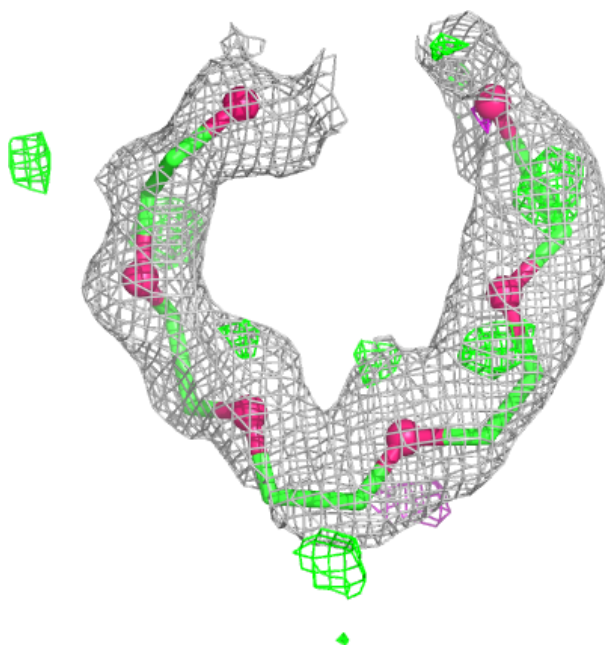
Electron density around 1PG B 965:

$2mF_o-DF_c$ (at 0.7 rmsd) in gray
 mF_o-DF_c (at 3 rmsd) in purple (negative)
and green (positive)



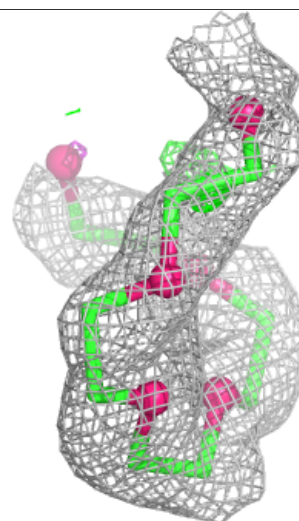
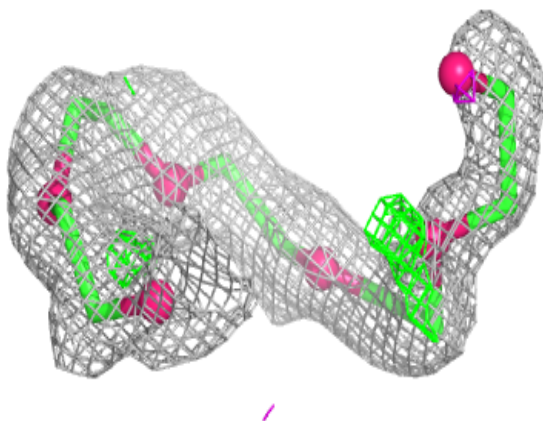
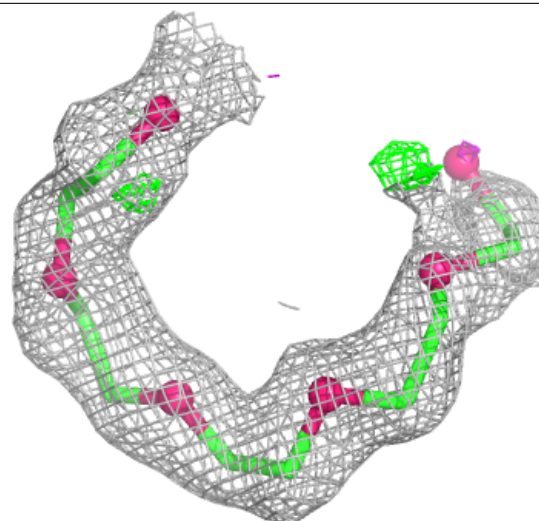
Electron density around 1PG A 962:

$2mF_o-DF_c$ (at 0.7 rmsd) in gray
 mF_o-DF_c (at 3 rmsd) in purple (negative)
and green (positive)



Electron density around 1PG B 963:

$2mF_o-DF_c$ (at 0.7 rmsd) in gray
 mF_o-DF_c (at 3 rmsd) in purple (negative)
and green (positive)



6.5 Other polymers [i](#)

There are no such residues in this entry.