



# Full wwPDB X-ray Structure Validation Report ⓘ

Mar 4, 2026 – 11:34 PM UTC

PDB ID : 8A2P / pdb\_00008a2p  
Title : Room-temperature structure of the stabilised A2A-LUAA47070 complex determined by synchrotron serial crystallography  
Authors : Moraes, I.; Kwan, T.O.C.; Axford, D.  
Deposited on : 2022-06-06  
Resolution : 3.50 Å(reported)

This is a Full wwPDB X-ray Structure Validation Report for a publicly released PDB entry.

We welcome your comments at [validation@mail.wwpdb.org](mailto:validation@mail.wwpdb.org)

A user guide is available at

<https://www.wwpdb.org/validation/2017/XrayValidationReportHelp>

with specific help available everywhere you see the ⓘ symbol.

The types of validation reports are described at

<http://www.wwpdb.org/validation/2017/FAQs#types>.

---

The following versions of software and data (see [references ⓘ](#)) were used in the production of this report:

MolProbity : 4-5-2 with Phenix2.0  
Mogul : 2022.3.0, CSD as543be (2022)  
Xtriage (Phenix) : 2.0  
EDS : 3.0  
Buster-report : wwPDB partial adaption of 1.1.7 (2018)  
Percentile statistics : 20250101.v01 (using entries in the PDB archive January 1st 2025)  
CCP4 : 9.0.010 (Gargrove)  
Density-Fitness : 1.0.12  
Ideal geometry (proteins) : Engh & Huber (2001)  
Ideal geometry (DNA, RNA) : Parkinson et al. (1996)  
Validation Pipeline (wwPDB-VP) : 2.49

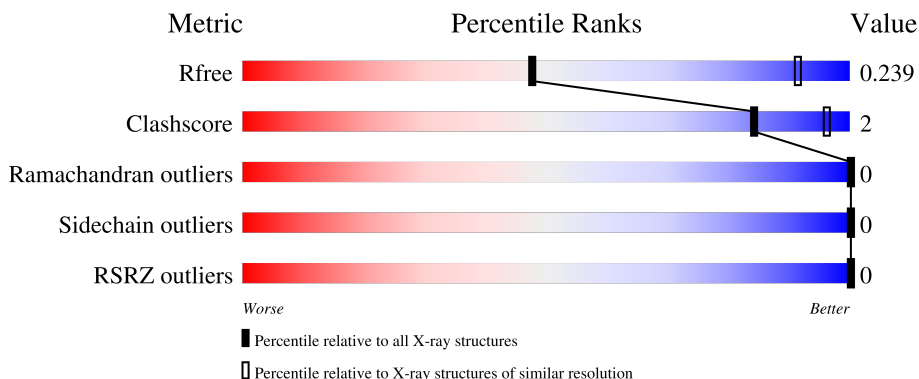
# 1 Overall quality at a glance

The following experimental techniques were used to determine the structure:

*X-RAY DIFFRACTION*

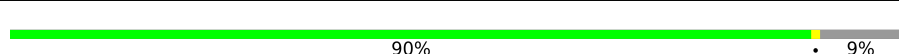
The reported resolution of this entry is 3.50 Å.

Percentile scores (ranging between 0-100) for global validation metrics of the entry are shown in the following graphic. The table shows the number of entries on which the scores are based.



Metric	Whole archive (#Entries)	Similar resolution (#Entries, resolution range(Å))
$R_{free}$	180053	1085 (3.54-3.46)
Clashscore	190562	1140 (3.54-3.46)
Ramachandran outliers	187476	1113 (3.54-3.46)
Sidechain outliers	187428	1114 (3.54-3.46)
RSRZ outliers	180081	1084 (3.54-3.46)

The table below summarises the geometric issues observed across the polymeric chains and their fit to the electron density. The red, orange, yellow and green segments of the lower bar indicate the fraction of residues that contain outliers for  $\geq 3$ , 2, 1 and 0 types of geometric quality criteria respectively. A grey segment represents the fraction of residues that are not modelled. The numeric value for each fraction is indicated below the corresponding segment, with a dot representing fractions  $\leq 5\%$ . The upper red bar (where present) indicates the fraction of residues that have poor fit to the electron density. The numeric value is given above the bar.

Mol	Chain	Length	Quality of chain
1	A	423	 90% . 9%

## 2 Entry composition i

There are 6 unique types of molecules in this entry. The entry contains 3184 atoms, of which 0 are hydrogens and 0 are deuteriums.

In the tables below, the ZeroOcc column contains the number of atoms modelled with zero occupancy, the AltConf column contains the number of residues with at least one atom in alternate conformation and the Trace column contains the number of residues modelled with at most 2 atoms.

- Molecule 1 is a protein called Adenosine receptor A2a,Soluble cytochrome b562.

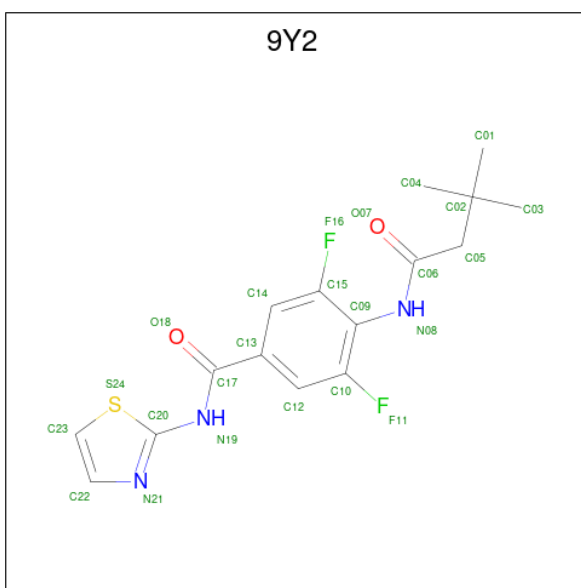
Mol	Chain	Residues	Atoms					ZeroOcc	AltConf	Trace
			Total	C	N	O	S			
1	A	386	3008	1961	507	519	21	0	3	0

There are 24 discrepancies between the modelled and reference sequences:

Chain	Residue	Modelled	Actual	Comment	Reference
A	0	ALA	-	expression tag	UNP P29274
A	1	PRO	-	expression tag	UNP P29274
A	54	LEU	ALA	engineered mutation	UNP P29274
A	88	ALA	THR	engineered mutation	UNP P29274
A	107	ALA	ARG	engineered mutation	UNP P29274
A	122	ALA	LYS	engineered mutation	UNP P29274
A	154	ALA	ASN	engineered mutation	UNP P29274
A	202	ALA	LEU	engineered mutation	UNP P29274
A	1007	TRP	MET	engineered mutation	UNP P0ABE7
A	1102	ILE	HIS	engineered mutation	UNP P0ABE7
A	1106	LEU	ARG	engineered mutation	UNP P0ABE7
A	235	ALA	LEU	engineered mutation	UNP P29274
A	239	ALA	VAL	engineered mutation	UNP P29274
A	277	ALA	SER	engineered mutation	UNP P29274
A	317	HIS	-	expression tag	UNP P29274
A	318	HIS	-	expression tag	UNP P29274
A	319	HIS	-	expression tag	UNP P29274
A	320	HIS	-	expression tag	UNP P29274
A	321	HIS	-	expression tag	UNP P29274
A	322	HIS	-	expression tag	UNP P29274
A	323	HIS	-	expression tag	UNP P29274
A	324	HIS	-	expression tag	UNP P29274
A	325	HIS	-	expression tag	UNP P29274
A	326	HIS	-	expression tag	UNP P29274

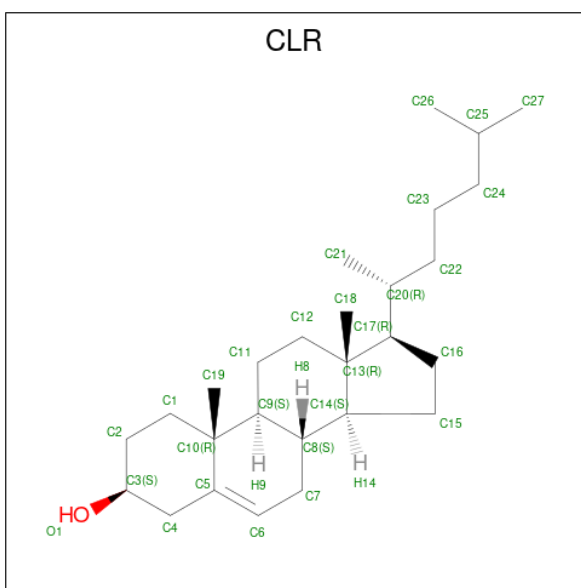
- Molecule 2 is 4-(3,3-dimethylbutanoylamino)-3,5-bis(fluoranyl)- {N}-(1,3-thiazol-2-yl) benzamide (CCD ID: 9Y2) (formula: C<sub>16</sub>H<sub>17</sub>F<sub>2</sub>N<sub>3</sub>O<sub>2</sub>S) (labeled as "Ligand of Interest" by

depositor).



Mol	Chain	Residues	Atoms					ZeroOcc	AltConf	
			Total	C	F	N	O			S
2	A	1	24	16	2	3	2	1	0	0

- Molecule 3 is CHOLESTEROL (CCD ID: CLR) (formula: C<sub>27</sub>H<sub>46</sub>O).



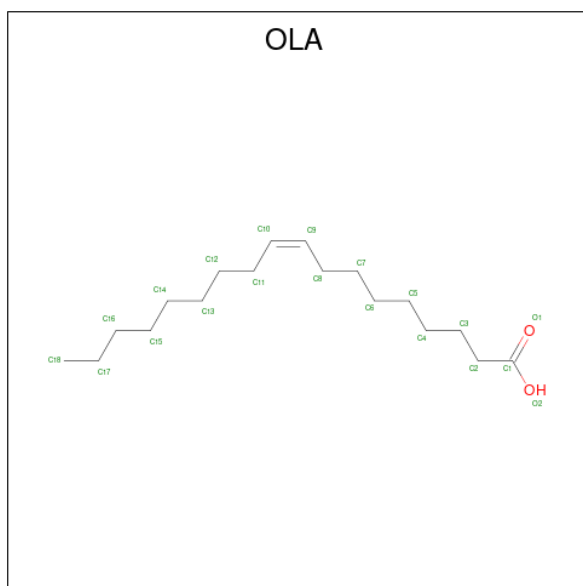
Mol	Chain	Residues	Atoms			ZeroOcc	AltConf
			Total	C	O		
3	A	1	28	27	1	0	0
3	A	1	28	27	1	0	0

*Continued on next page...*

Continued from previous page...

Mol	Chain	Residues	Atoms			ZeroOcc	AltConf
3	A	1	Total	C	O	0	0
			28	27	1		

- Molecule 4 is OLEIC ACID (CCD ID: OLA) (formula:  $C_{18}H_{34}O_2$ ).



Mol	Chain	Residues	Atoms			ZeroOcc	AltConf
4	A	1	Total	C	O	0	0
			20	18	2		
4	A	1	Total	C	O	0	0
			18	16	2		
4	A	1	Total	C	O	0	0
			8	6	2		
4	A	1	Total	C	O	0	0
			9	7	2		

- Molecule 5 is SODIUM ION (CCD ID: NA) (formula: Na).

Mol	Chain	Residues	Atoms		ZeroOcc	AltConf
5	A	1	Total	Na	0	0
			1	1		

- Molecule 6 is water.

Mol	Chain	Residues	Atoms		ZeroOcc	AltConf
6	A	12	Total	O	0	0
			12	12		



## 4 Data and refinement statistics

Property	Value	Source
Space group	C 2 2 21	Depositor
Cell constants a, b, c, $\alpha$ , $\beta$ , $\gamma$	40.44Å 181.84Å 144.64Å 90.00° 90.00° 90.00°	Depositor
Resolution (Å)	90.92 – 3.50 90.92 – 3.50	Depositor EDS
% Data completeness (in resolution range)	99.5 (90.92-3.50) 99.6 (90.92-3.50)	Depositor EDS
$R_{merge}$	(Not available)	Depositor
$R_{sym}$	(Not available)	Depositor
$\langle I/\sigma(I) \rangle$ <sup>1</sup>	2.33 (at 3.54Å)	Xtrriage
Refinement program	REFMAC 5.8.0189	Depositor
R, $R_{free}$	0.201 , 0.247 0.216 , 0.239	Depositor DCC
$R_{free}$ test set	700 reflections (9.82%)	wwPDB-VP
Wilson B-factor (Å <sup>2</sup> )	89.6	Xtrriage
Anisotropy	0.172	Xtrriage
Bulk solvent $k_{sol}$ (e/Å <sup>3</sup> ), $B_{sol}$ (Å <sup>2</sup> )	0.30 , 87.4	EDS
L-test for twinning <sup>2</sup>	$\langle  L  \rangle = 0.48$ , $\langle L^2 \rangle = 0.31$	Xtrriage
Estimated twinning fraction	No twinning to report.	Xtrriage
$F_o, F_c$ correlation	0.94	EDS
Total number of atoms	3184	wwPDB-VP
Average B, all atoms (Å <sup>2</sup> )	118.0	wwPDB-VP

Xtrriage's analysis on translational NCS is as follows: *The largest off-origin peak in the Patterson function is 6.47% of the height of the origin peak. No significant pseudotranslation is detected.*

<sup>1</sup>Intensities estimated from amplitudes.

<sup>2</sup>Theoretical values of  $\langle |L| \rangle$ ,  $\langle L^2 \rangle$  for acentric reflections are 0.5, 0.333 respectively for untwinned datasets, and 0.375, 0.2 for perfectly twinned datasets.

## 5 Model quality [i](#)

### 5.1 Standard geometry [i](#)

Bond lengths and bond angles in the following residue types are not validated in this section: NA, OLA, CLR, 9Y2

The Z score for a bond length (or angle) is the number of standard deviations the observed value is removed from the expected value. A bond length (or angle) with  $|Z| > 5$  is considered an outlier worth inspection. RMSZ is the root-mean-square of all Z scores of the bond lengths (or angles).

Mol	Chain	Bond lengths		Bond angles	
		RMSZ	# Z  >5	RMSZ	# Z  >5
1	A	0.33	0/3070	0.39	0/4173

There are no bond length outliers.

There are no bond angle outliers.

There are no chirality outliers.

There are no planarity outliers.

### 5.2 Too-close contacts [i](#)

In the following table, the Non-H and H(model) columns list the number of non-hydrogen atoms and hydrogen atoms in the chain respectively. The H(added) column lists the number of hydrogen atoms added and optimized by MolProbity. The Clashes column lists the number of clashes within the asymmetric unit, whereas Symm-Clashes lists symmetry-related clashes.

Mol	Chain	Non-H	H(model)	H(added)	Clashes	Symm-Clashes
1	A	3008	0	3078	4	0
2	A	24	0	0	0	0
3	A	84	0	138	12	0
4	A	55	0	77	0	0
5	A	1	0	0	0	0
6	A	12	0	0	0	0
All	All	3184	0	3293	15	0

The all-atom clashscore is defined as the number of clashes found per 1000 atoms (including hydrogen atoms). The all-atom clashscore for this structure is 2.

All (15) close contacts within the same asymmetric unit are listed below, sorted by their clash magnitude.

Atom-1	Atom-2	Interatomic distance (Å)	Clash overlap (Å)
1:A:64:ILE:O	1:A:67:SER:OG	2.33	0.46
1:A:263:SER:O	3:A:1204:CLR:O1	2.30	0.46
3:A:1202:CLR:H183	3:A:1202:CLR:H20	1.56	0.45
3:A:1203:CLR:H183	3:A:1203:CLR:H20	1.58	0.44
3:A:1204:CLR:H211	3:A:1204:CLR:H232	1.82	0.43
3:A:1202:CLR:H182	3:A:1202:CLR:H111	1.56	0.43
3:A:1203:CLR:H111	3:A:1203:CLR:H182	1.60	0.42
3:A:1202:CLR:H221	3:A:1202:CLR:H162	1.65	0.42
3:A:1203:CLR:H8	3:A:1203:CLR:H191	1.87	0.41
3:A:1204:CLR:H212	3:A:1204:CLR:H121	2.02	0.41
1:A:183:PHE:HD1	1:A:187[B]:LEU:HD12	1.86	0.41
3:A:1204:CLR:H182	3:A:1204:CLR:H111	1.82	0.41
3:A:1203:CLR:H162	3:A:1203:CLR:H221	1.86	0.41
1:A:177:MET:HE3	1:A:177:MET:HB3	1.93	0.40
3:A:1202:CLR:H213	3:A:1202:CLR:H231	1.75	0.40

There are no symmetry-related clashes.

## 5.3 Torsion angles [i](#)

### 5.3.1 Protein backbone [i](#)

In the following table, the Percentiles column shows the percent Ramachandran outliers of the chain as a percentile score with respect to all X-ray entries followed by that with respect to entries of similar resolution.

The Analysed column shows the number of residues for which the backbone conformation was analysed, and the total number of residues.

Mol	Chain	Analysed	Favoured	Allowed	Outliers	Percentiles
1	A	381/423 (90%)	379 (100%)	2 (0%)	0	<b>100</b> <b>100</b>

There are no Ramachandran outliers to report.

### 5.3.2 Protein sidechains [i](#)

In the following table, the Percentiles column shows the percent sidechain outliers of the chain as a percentile score with respect to all X-ray entries followed by that with respect to entries of similar resolution.

The Analysed column shows the number of residues for which the sidechain conformation was analysed, and the total number of residues.

Mol	Chain	Analysed	Rotameric	Outliers	Percentiles
1	A	314/346 (91%)	314 (100%)	0	100 100

There are no protein residues with a non-rotameric sidechain to report.

Sometimes sidechains can be flipped to improve hydrogen bonding and reduce clashes. All (3) such sidechains are listed below:

Mol	Chain	Res	Type
1	A	24	ASN
1	A	75	HIS
1	A	1103	GLN

### 5.3.3 RNA [i](#)

There are no RNA molecules in this entry.

## 5.4 Non-standard residues in protein, DNA, RNA chains [i](#)

There are no non-standard protein/DNA/RNA residues in this entry.

## 5.5 Carbohydrates [i](#)

There are no oligosaccharides in this entry.

## 5.6 Ligand geometry [i](#)

Of 9 ligands modelled in this entry, 1 is monoatomic - leaving 8 for Mogul analysis.

In the following table, the Counts columns list the number of bonds (or angles) for which Mogul statistics could be retrieved, the number of bonds (or angles) that are observed in the model and the number of bonds (or angles) that are defined in the Chemical Component Dictionary. The Link column lists molecule types, if any, to which the group is linked. The Z score for a bond length (or angle) is the number of standard deviations the observed value is removed from the expected value. A bond length (or angle) with  $|Z| > 2$  is considered an outlier worth inspection. RMSZ is the root-mean-square of all Z scores of the bond lengths (or angles).

Mol	Type	Chain	Res	Link	Bond lengths			Bond angles		
					Counts	RMSZ	$\# Z  > 2$	Counts	RMSZ	$\# Z  > 2$
4	OLA	A	1208	-	8,8,19	0.72	0	8,8,19	0.95	0
2	9Y2	A	1201	-	25,25,25	4.53	12 (48%)	35,36,36	3.31	13 (37%)
3	CLR	A	1203	-	31,31,31	2.68	11 (35%)	48,48,48	4.49	30 (62%)

Mol	Type	Chain	Res	Link	Bond lengths			Bond angles		
					Counts	RMSZ	# Z  > 2	Counts	RMSZ	# Z  > 2
3	CLR	A	1204	-	31,31,31	2.70	9 (29%)	48,48,48	4.33	29 (60%)
4	OLA	A	1207	-	7,7,19	0.76	0	7,7,19	0.82	0
4	OLA	A	1205	-	19,19,19	0.52	0	19,19,19	0.87	0
4	OLA	A	1206	-	17,17,19	0.55	0	17,17,19	0.76	0
3	CLR	A	1202	-	31,31,31	2.41	10 (32%)	48,48,48	4.17	28 (58%)

In the following table, the Chirals column lists the number of chiral outliers, the number of chiral centers analysed, the number of these observed in the model and the number defined in the Chemical Component Dictionary. Similar counts are reported in the Torsion and Rings columns. '-' means no outliers of that kind were identified.

Mol	Type	Chain	Res	Link	Chirals	Torsions	Rings
4	OLA	A	1208	-	-	4/6/6/17	-
2	9Y2	A	1201	-	-	0/17/17/17	0/2/2/2
3	CLR	A	1203	-	-	8/10/68/68	0/4/4/4
3	CLR	A	1204	-	-	8/10/68/68	0/4/4/4
4	OLA	A	1207	-	-	2/5/5/17	-
4	OLA	A	1205	-	-	7/17/17/17	-
4	OLA	A	1206	-	-	8/15/15/17	-
3	CLR	A	1202	-	-	10/10/68/68	0/4/4/4

All (42) bond length outliers are listed below:

Mol	Chain	Res	Type	Atoms	Z	Observed(Å)	Ideal(Å)
2	A	1201	9Y2	C20-S24	-14.73	1.54	1.74
2	A	1201	9Y2	C22-N21	9.58	1.56	1.38
3	A	1203	CLR	C12-C13	-7.01	1.41	1.54
2	A	1201	9Y2	C06-N08	6.66	1.49	1.35
3	A	1204	CLR	C12-C13	-6.37	1.43	1.54
2	A	1201	9Y2	C20-N21	6.22	1.41	1.31
3	A	1204	CLR	C8-C14	-5.80	1.42	1.53
3	A	1203	CLR	C8-C14	-5.79	1.42	1.53
2	A	1201	9Y2	C20-N19	5.72	1.46	1.38
3	A	1202	CLR	C12-C13	-5.68	1.44	1.54
3	A	1202	CLR	C8-C14	-4.94	1.44	1.53
3	A	1204	CLR	C15-C14	-4.87	1.44	1.54
3	A	1204	CLR	C13-C17	-4.73	1.46	1.55
3	A	1203	CLR	C7-C8	-4.65	1.45	1.53
3	A	1202	CLR	C13-C17	-4.63	1.46	1.55
3	A	1204	CLR	C11-C9	-4.58	1.46	1.53

Continued on next page...

Continued from previous page...

Mol	Chain	Res	Type	Atoms	Z	Observed(Å)	Ideal(Å)
3	A	1204	CLR	C7-C8	-4.46	1.45	1.53
3	A	1203	CLR	C11-C9	-4.43	1.46	1.53
3	A	1202	CLR	C11-C9	-4.41	1.46	1.53
2	A	1201	9Y2	C23-S24	-4.34	1.50	1.70
2	A	1201	9Y2	C17-N19	4.23	1.45	1.37
3	A	1203	CLR	C13-C17	-4.16	1.47	1.55
3	A	1203	CLR	C15-C14	-4.16	1.45	1.54
3	A	1204	CLR	C4-C5	4.06	1.59	1.51
3	A	1202	CLR	C4-C5	4.00	1.59	1.51
3	A	1203	CLR	C4-C5	3.99	1.59	1.51
3	A	1204	CLR	C12-C11	-3.99	1.45	1.53
2	A	1201	9Y2	C22-C23	3.95	1.43	1.34
3	A	1202	CLR	C7-C8	-3.90	1.46	1.53
3	A	1204	CLR	C8-C9	-3.81	1.46	1.53
3	A	1203	CLR	C8-C9	-3.81	1.46	1.53
3	A	1202	CLR	C15-C14	-3.80	1.46	1.54
3	A	1202	CLR	C8-C9	-3.69	1.46	1.53
2	A	1201	9Y2	C13-C17	2.96	1.56	1.50
3	A	1203	CLR	C12-C11	-2.80	1.47	1.53
2	A	1201	9Y2	C05-C06	2.48	1.54	1.51
3	A	1203	CLR	C10-C5	-2.38	1.48	1.52
2	A	1201	9Y2	O07-C06	-2.31	1.18	1.23
3	A	1203	CLR	C10-C9	2.30	1.59	1.56
3	A	1202	CLR	C10-C5	-2.20	1.48	1.52
2	A	1201	9Y2	C09-N08	2.06	1.47	1.43
3	A	1202	CLR	C10-C9	2.04	1.59	1.56

All (100) bond angle outliers are listed below:

Mol	Chain	Res	Type	Atoms	Z	Observed(°)	Ideal(°)
2	A	1201	9Y2	C23-S24-C20	15.68	108.02	90.07
3	A	1203	CLR	C12-C13-C17	-10.81	100.68	116.60
3	A	1202	CLR	C14-C8-C9	-10.79	94.99	109.09
3	A	1204	CLR	C7-C8-C9	-10.69	97.36	109.72
3	A	1202	CLR	C11-C12-C13	-10.34	95.29	112.74
3	A	1204	CLR	C12-C13-C17	-9.93	101.98	116.60
3	A	1203	CLR	C14-C8-C9	-9.77	96.33	109.09
3	A	1203	CLR	C11-C12-C13	-9.54	96.63	112.74
3	A	1203	CLR	C7-C8-C9	-9.01	99.31	109.72
3	A	1203	CLR	C16-C17-C20	8.96	125.73	112.18
3	A	1202	CLR	C7-C8-C9	-8.72	99.65	109.72
3	A	1204	CLR	C16-C17-C13	-8.40	93.95	103.84

Continued on next page...

*Continued from previous page...*

Mol	Chain	Res	Type	Atoms	Z	Observed(°)	Ideal(°)
3	A	1202	CLR	C12-C13-C17	-8.38	104.26	116.60
3	A	1204	CLR	C14-C8-C9	-8.36	98.17	109.09
3	A	1202	CLR	C7-C8-C14	-8.18	99.35	110.93
3	A	1204	CLR	C7-C8-C14	-7.96	99.66	110.93
3	A	1204	CLR	C11-C12-C13	-7.86	99.48	112.74
3	A	1204	CLR	C8-C7-C6	-7.49	102.39	112.76
3	A	1203	CLR	C7-C8-C14	-7.44	100.41	110.93
3	A	1203	CLR	C13-C17-C20	-7.10	108.53	119.50
3	A	1204	CLR	C16-C17-C20	6.69	122.30	112.18
3	A	1203	CLR	C8-C7-C6	-6.26	104.08	112.76
3	A	1202	CLR	C8-C7-C6	-6.25	104.11	112.76
3	A	1203	CLR	C19-C10-C5	-6.12	99.04	108.38
3	A	1204	CLR	C10-C9-C8	-6.05	103.87	112.71
3	A	1203	CLR	C16-C17-C13	-5.98	96.81	103.84
3	A	1202	CLR	C16-C17-C13	-5.90	96.90	103.84
3	A	1203	CLR	C1-C10-C9	5.79	116.40	108.74
3	A	1203	CLR	C4-C5-C10	5.69	123.70	116.42
3	A	1203	CLR	C15-C14-C13	-5.66	97.18	103.84
2	A	1201	9Y2	C23-C22-N21	-5.44	108.27	116.12
3	A	1204	CLR	C13-C17-C20	-5.40	111.15	119.50
3	A	1202	CLR	C13-C17-C20	-5.38	111.19	119.50
3	A	1202	CLR	C15-C14-C13	-5.36	97.54	103.84
3	A	1202	CLR	C16-C17-C20	5.26	120.13	112.18
3	A	1202	CLR	C11-C9-C8	-5.23	104.48	111.78
3	A	1204	CLR	C18-C13-C14	5.05	120.84	111.68
3	A	1203	CLR	C11-C9-C8	-4.77	105.13	111.78
3	A	1203	CLR	C19-C10-C1	4.67	116.54	109.43
3	A	1204	CLR	C15-C14-C8	-4.63	111.71	119.10
3	A	1203	CLR	C18-C13-C14	4.62	120.05	111.68
3	A	1204	CLR	C15-C14-C13	-4.62	98.41	103.84
3	A	1202	CLR	C4-C5-C10	4.60	122.32	116.42
3	A	1204	CLR	C16-C15-C14	-4.56	96.22	105.14
3	A	1202	CLR	C17-C13-C14	4.40	105.15	100.10
3	A	1202	CLR	C19-C10-C5	-4.29	101.84	108.38
3	A	1202	CLR	C19-C10-C9	-4.26	106.87	111.66
3	A	1202	CLR	C19-C10-C1	4.19	115.80	109.43
3	A	1203	CLR	C10-C9-C8	-4.18	106.60	112.71
2	A	1201	9Y2	C15-C09-C10	4.15	120.20	115.70
3	A	1204	CLR	C11-C9-C8	-3.96	106.25	111.78
2	A	1201	9Y2	S24-C20-N21	-3.89	107.26	114.59
3	A	1202	CLR	C7-C6-C5	-3.76	118.67	125.02
3	A	1204	CLR	C15-C16-C17	3.75	112.49	105.14

*Continued on next page...*

*Continued from previous page...*

Mol	Chain	Res	Type	Atoms	Z	Observed(°)	Ideal(°)
3	A	1204	CLR	C1-C2-C3	3.69	115.37	110.48
3	A	1204	CLR	C4-C5-C10	3.59	121.02	116.42
3	A	1204	CLR	C1-C10-C5	-3.53	102.65	108.74
3	A	1202	CLR	C15-C14-C8	-3.38	113.71	119.10
3	A	1203	CLR	C16-C15-C14	-3.31	98.67	105.14
3	A	1204	CLR	O1-C3-C4	3.20	116.92	109.71
3	A	1202	CLR	C1-C2-C3	3.15	114.66	110.48
3	A	1203	CLR	C7-C6-C5	-3.09	119.80	125.02
3	A	1204	CLR	C3-C4-C5	-3.08	107.15	112.05
3	A	1204	CLR	C19-C10-C9	-3.08	108.21	111.66
3	A	1203	CLR	C19-C10-C9	-3.05	108.24	111.66
3	A	1204	CLR	C19-C10-C1	3.04	114.06	109.43
3	A	1203	CLR	C1-C10-C5	-3.03	103.51	108.74
3	A	1202	CLR	C1-C10-C9	3.02	112.73	108.74
3	A	1202	CLR	C10-C9-C8	-3.00	108.33	112.71
3	A	1204	CLR	C7-C6-C5	-2.96	120.01	125.02
2	A	1201	9Y2	F11-C10-C09	2.89	120.64	117.64
3	A	1204	CLR	C1-C10-C9	2.85	112.51	108.74
3	A	1203	CLR	C10-C5-C6	-2.83	118.80	122.93
3	A	1202	CLR	C21-C20-C17	2.81	117.11	112.88
3	A	1204	CLR	C10-C5-C6	-2.78	118.87	122.93
3	A	1203	CLR	C15-C14-C8	-2.74	114.73	119.10
3	A	1202	CLR	C16-C15-C14	-2.71	99.84	105.14
2	A	1201	9Y2	F16-C15-C09	2.71	120.45	117.64
2	A	1201	9Y2	S24-C20-N19	2.70	128.10	123.29
2	A	1201	9Y2	C13-C17-N19	2.64	120.06	116.25
3	A	1203	CLR	O1-C3-C2	-2.62	103.31	110.17
3	A	1203	CLR	C11-C9-C10	-2.62	109.85	113.08
3	A	1203	CLR	C4-C5-C6	-2.62	117.02	120.57
2	A	1201	9Y2	C05-C06-N08	2.59	119.52	114.89
2	A	1201	9Y2	C12-C10-C09	-2.57	119.80	123.39
3	A	1202	CLR	C10-C5-C6	-2.54	119.22	122.93
3	A	1203	CLR	C17-C13-C14	2.54	103.01	100.10
3	A	1202	CLR	O1-C3-C4	2.53	115.41	109.71
2	A	1201	9Y2	C14-C15-C09	-2.53	119.86	123.39
3	A	1204	CLR	C2-C1-C10	2.48	118.07	112.78
3	A	1203	CLR	C2-C1-C10	2.46	118.03	112.78
3	A	1204	CLR	C12-C11-C9	2.29	117.03	113.14
3	A	1202	CLR	O1-C3-C2	-2.28	104.19	110.17
3	A	1202	CLR	C15-C16-C17	2.28	109.61	105.14
3	A	1202	CLR	C18-C13-C14	2.19	115.65	111.68
2	A	1201	9Y2	C22-C23-S24	-2.11	107.57	110.27

*Continued on next page...*

*Continued from previous page...*

Mol	Chain	Res	Type	Atoms	Z	Observed(°)	Ideal(°)
3	A	1204	CLR	O1-C3-C2	-2.11	104.65	110.17
2	A	1201	9Y2	C15-C09-N08	-2.06	119.52	122.12
3	A	1203	CLR	C15-C16-C17	2.03	109.13	105.14
3	A	1203	CLR	O1-C3-C4	2.01	114.24	109.71

There are no chirality outliers.

All (47) torsion outliers are listed below:

Mol	Chain	Res	Type	Atoms
3	A	1203	CLR	C13-C17-C20-C21
3	A	1203	CLR	C13-C17-C20-C22
3	A	1203	CLR	C16-C17-C20-C21
3	A	1202	CLR	C13-C17-C20-C21
3	A	1204	CLR	C13-C17-C20-C21
3	A	1203	CLR	C16-C17-C20-C22
3	A	1202	CLR	C13-C17-C20-C22
3	A	1204	CLR	C13-C17-C20-C22
3	A	1202	CLR	C17-C20-C22-C23
3	A	1203	CLR	C17-C20-C22-C23
3	A	1204	CLR	C21-C20-C22-C23
3	A	1204	CLR	C20-C22-C23-C24
3	A	1204	CLR	C23-C24-C25-C26
3	A	1202	CLR	C16-C17-C20-C22
4	A	1205	OLA	C14-C15-C16-C17
3	A	1202	CLR	C16-C17-C20-C21
4	A	1206	OLA	C12-C13-C14-C15
4	A	1206	OLA	C3-C4-C5-C6
4	A	1208	OLA	C2-C3-C4-C5
4	A	1205	OLA	C13-C14-C15-C16
3	A	1204	CLR	C16-C17-C20-C22
4	A	1206	OLA	C11-C12-C13-C14
3	A	1203	CLR	C22-C23-C24-C25
4	A	1205	OLA	C12-C13-C14-C15
3	A	1204	CLR	C16-C17-C20-C21
4	A	1207	OLA	C3-C4-C5-C6
4	A	1206	OLA	C13-C14-C15-C16
4	A	1208	OLA	C4-C5-C6-C7
4	A	1208	OLA	C3-C4-C5-C6
3	A	1202	CLR	C21-C20-C22-C23
3	A	1203	CLR	C21-C20-C22-C23
3	A	1204	CLR	C23-C24-C25-C27
3	A	1203	CLR	C23-C24-C25-C27

*Continued on next page...*

*Continued from previous page...*

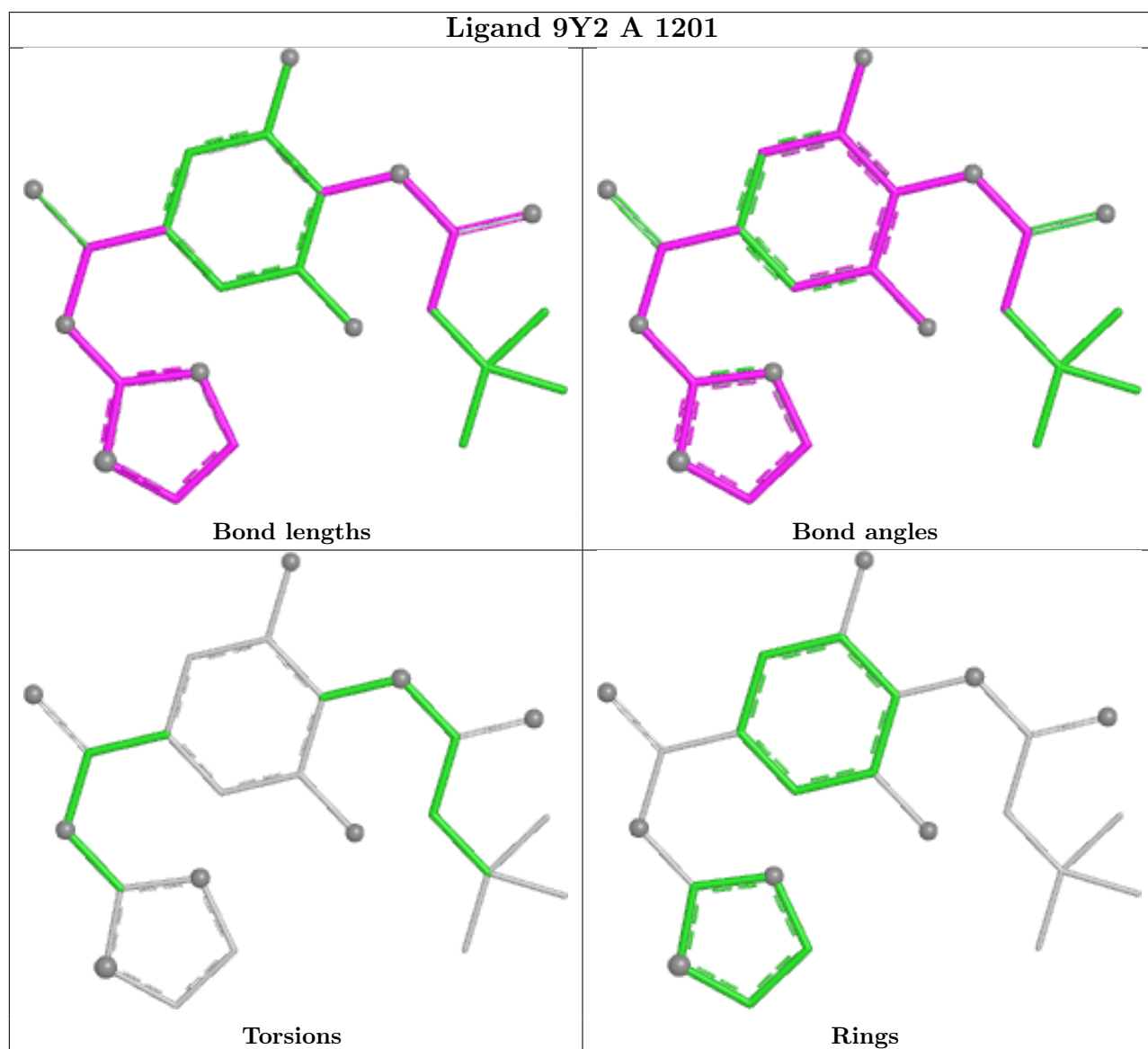
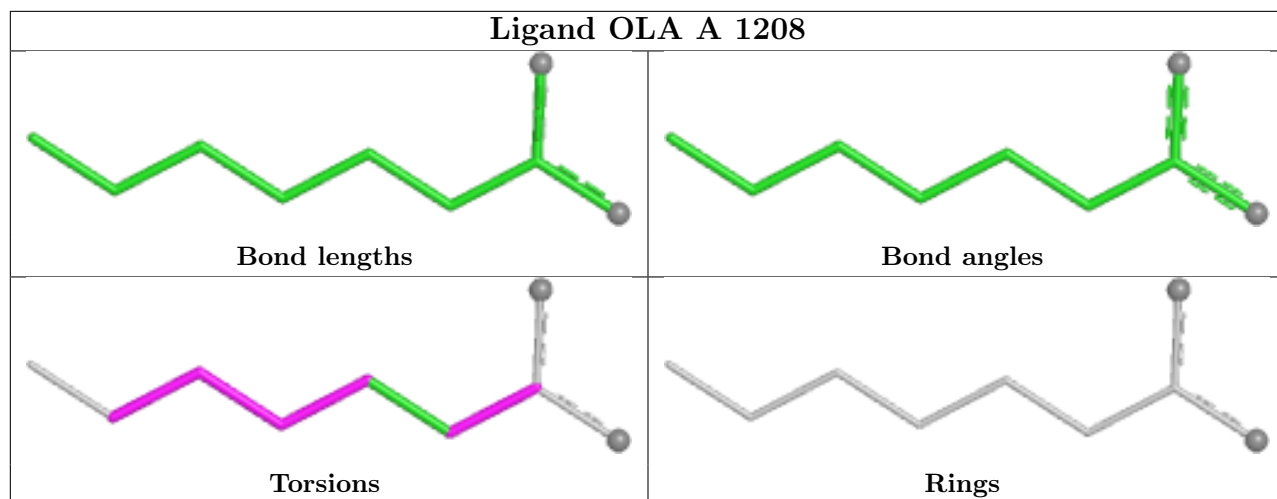
Mol	Chain	Res	Type	Atoms
3	A	1202	CLR	C23-C24-C25-C27
4	A	1206	OLA	C5-C6-C7-C8
3	A	1202	CLR	C23-C24-C25-C26
3	A	1202	CLR	C20-C22-C23-C24
4	A	1207	OLA	C2-C3-C4-C5
4	A	1206	OLA	C7-C8-C9-C10
4	A	1205	OLA	C7-C8-C9-C10
3	A	1202	CLR	C22-C23-C24-C25
4	A	1205	OLA	O1-C1-C2-C3
4	A	1205	OLA	C1-C2-C3-C4
4	A	1206	OLA	O2-C1-C2-C3
4	A	1205	OLA	O2-C1-C2-C3
4	A	1208	OLA	O2-C1-C2-C3
4	A	1206	OLA	O1-C1-C2-C3

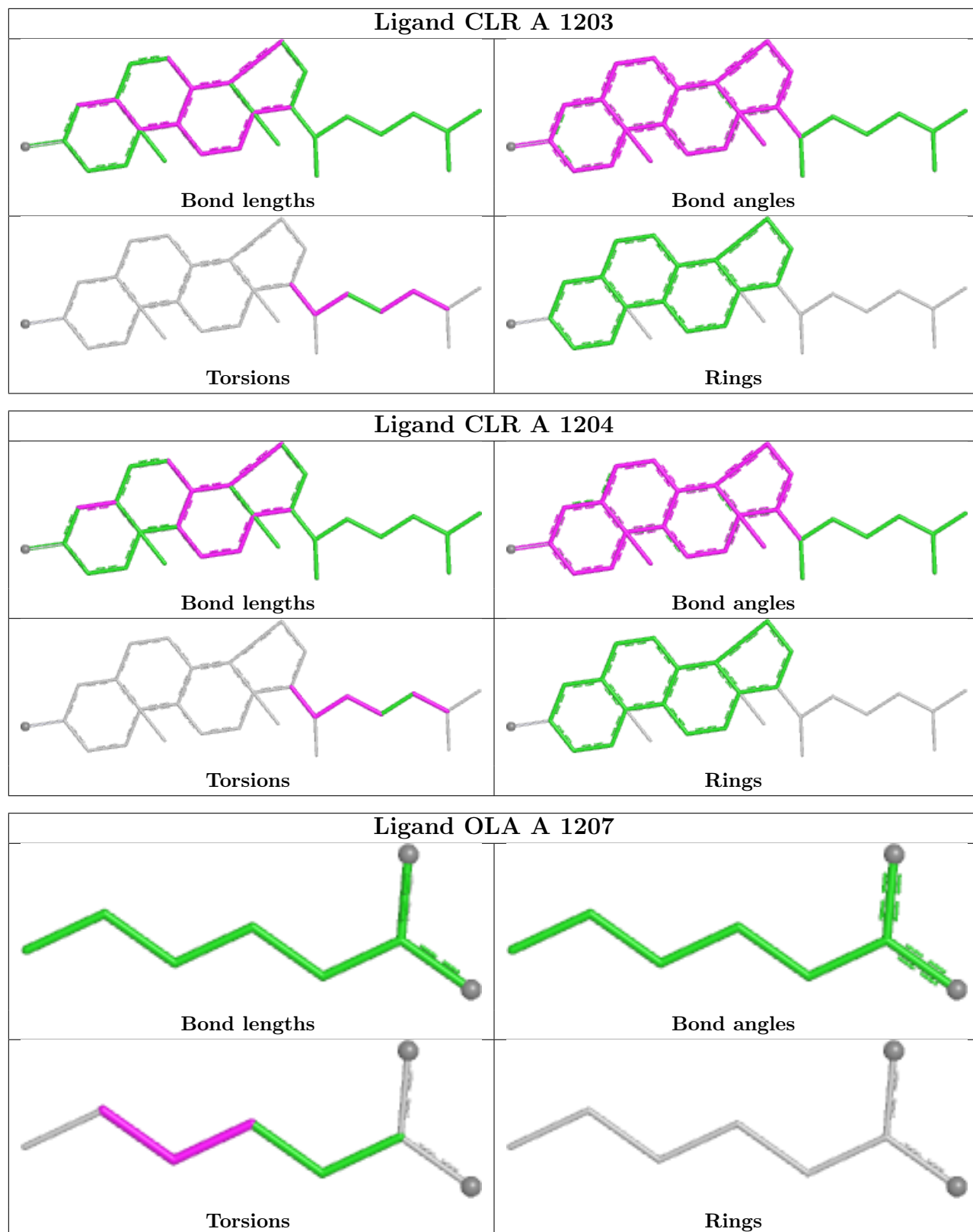
There are no ring outliers.

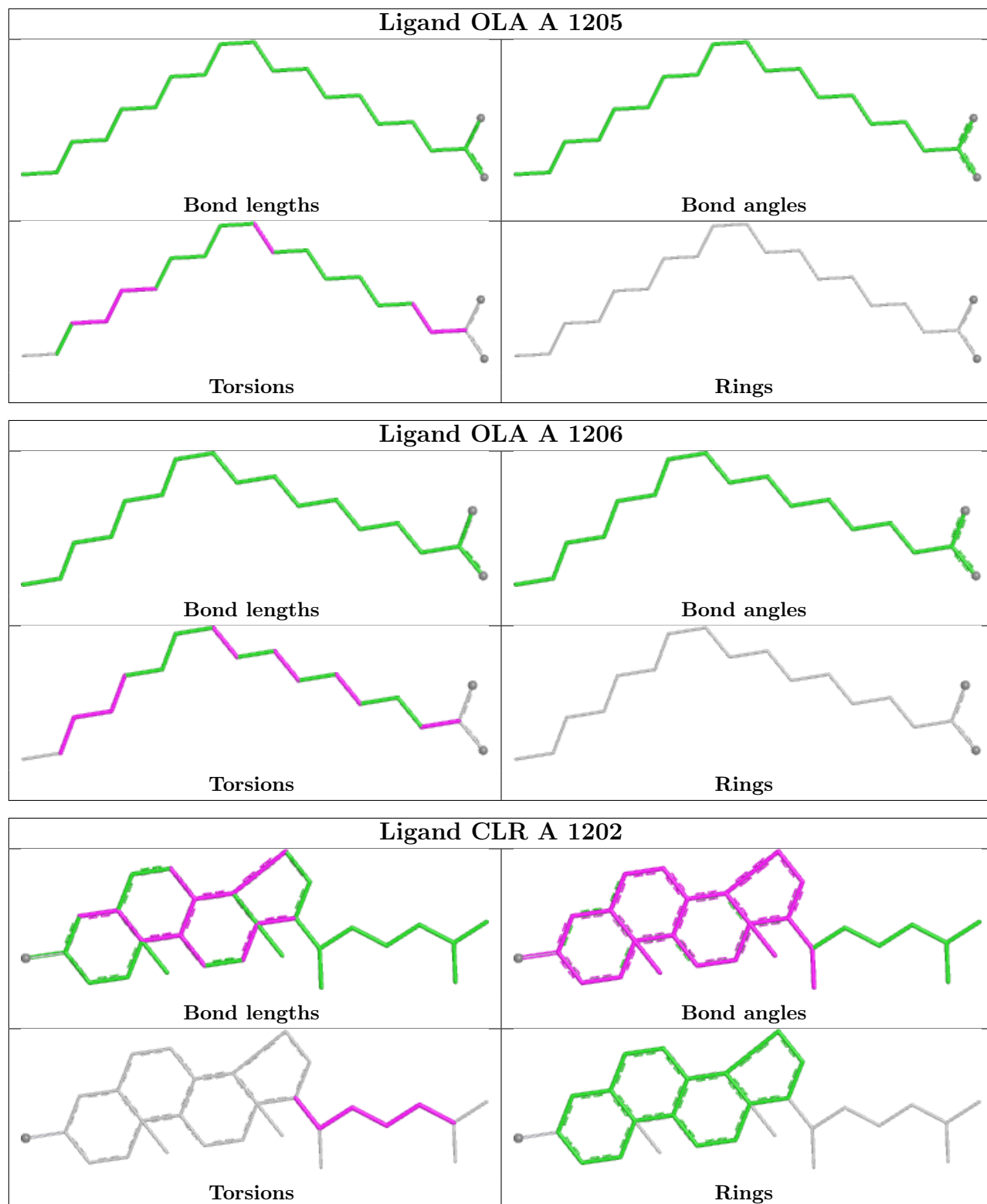
3 monomers are involved in 12 short contacts:

Mol	Chain	Res	Type	Clashes	Symm-Clashes
3	A	1203	CLR	4	0
3	A	1204	CLR	4	0
3	A	1202	CLR	4	0

The following is a two-dimensional graphical depiction of Mogul quality analysis of bond lengths, bond angles, torsion angles, and ring geometry for all instances of the Ligand of Interest. In addition, ligands with molecular weight > 250 and outliers as shown on the validation Tables will also be included. For torsion angles, if less than 5% of the Mogul distribution of torsion angles is within 10 degrees of the torsion angle in question, then that torsion angle is considered an outlier. Any bond that is central to one or more torsion angles identified as an outlier by Mogul will be highlighted in the graph. For rings, the root-mean-square deviation (RMSD) between the ring in question and similar rings identified by Mogul is calculated over all ring torsion angles. If the average RMSD is greater than 60 degrees and the minimal RMSD between the ring in question and any Mogul-identified rings is also greater than 60 degrees, then that ring is considered an outlier. The outliers are highlighted in purple. The color gray indicates Mogul did not find sufficient equivalents in the CSD to analyse the geometry.







## 5.7 Other polymers [\(i\)](#)

There are no such residues in this entry.

## 5.8 Polymer linkage issues

The following chains have linkage breaks:

Mol	Chain	Number of breaks
1	A	2

All chain breaks are listed below:

Model	Chain	Residue-1	Atom-1	Residue-2	Atom-2	Distance (Å)
1	A	1106:LEU	C	219:GLU	N	3.22
1	A	208:LEU	C	1001:ALA	N	3.08

## 6 Fit of model and data [i](#)

### 6.1 Protein, DNA and RNA chains [i](#)

In the following table, the column labelled ‘#RSRZ> 2’ contains the number (and percentage) of RSRZ outliers, followed by percent RSRZ outliers for the chain as percentile scores relative to all X-ray entries and entries of similar resolution. The OWAB column contains the minimum, median, 95<sup>th</sup> percentile and maximum values of the occupancy-weighted average B-factor per residue. The column labelled ‘Q< 0.9’ lists the number of (and percentage) of residues with an average occupancy less than 0.9.

Mol	Chain	Analysed	<RSRZ>	#RSRZ>2	OWAB(Å <sup>2</sup> )	Q<0.9
1	A	386/423 (91%)	-0.35	0 <a href="#">100</a> <a href="#">100</a>	40, 105, 184, 215	3 (0%)

There are no RSRZ outliers to report.

### 6.2 Non-standard residues in protein, DNA, RNA chains [i](#)

There are no non-standard protein/DNA/RNA residues in this entry.

### 6.3 Carbohydrates [i](#)

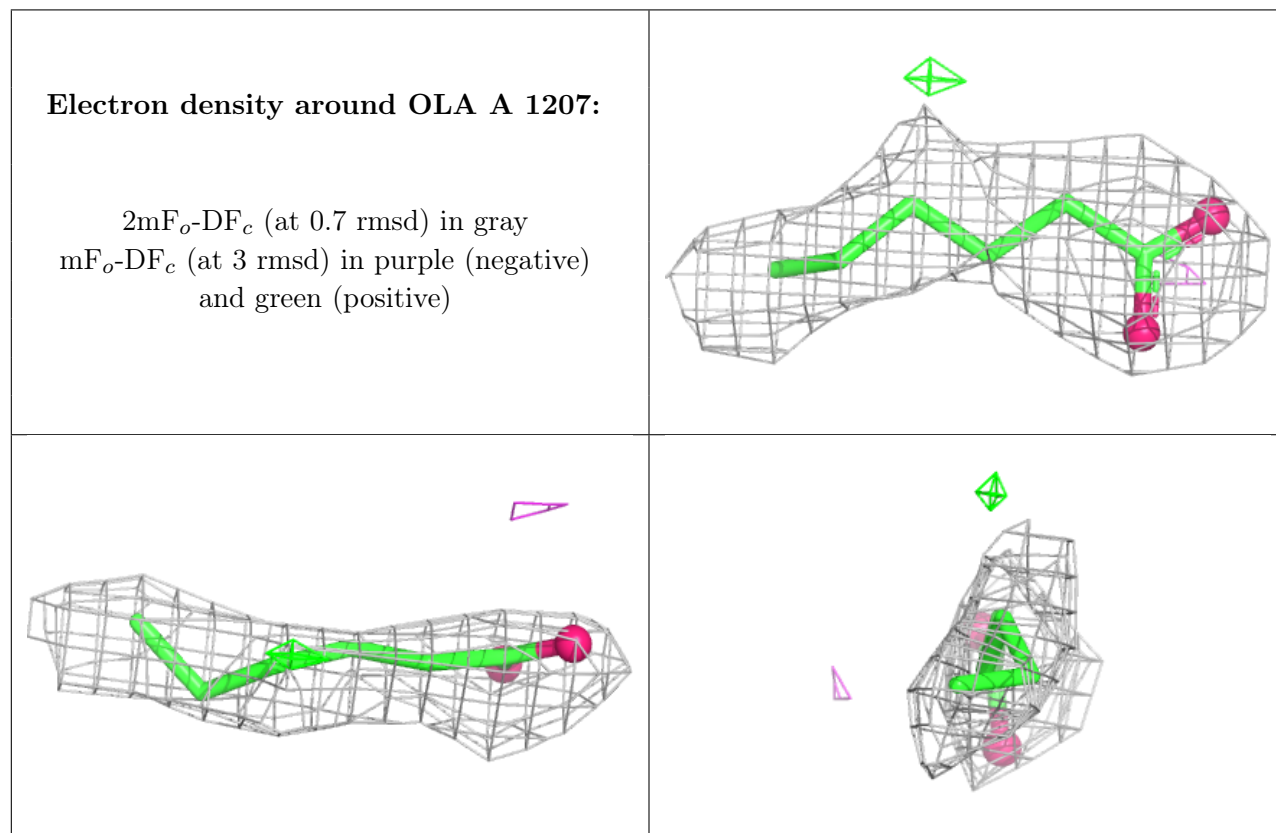
There are no oligosaccharides in this entry.

### 6.4 Ligands [i](#)

In the following table, the Atoms column lists the number of modelled atoms in the group and the number defined in the chemical component dictionary. The B-factors column lists the minimum, median, 95<sup>th</sup> percentile and maximum values of B factors of atoms in the group. The column labelled ‘Q< 0.9’ lists the number of atoms with occupancy less than 0.9.

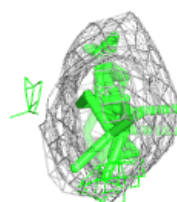
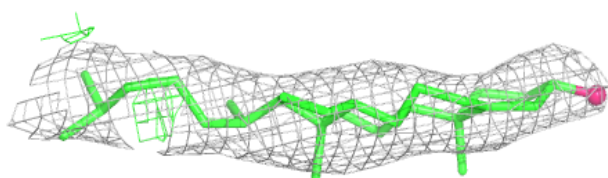
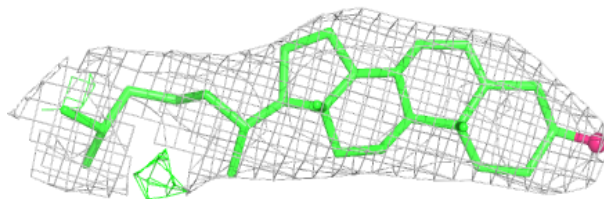
Mol	Type	Chain	Res	Atoms	RSCC	RSR	B-factors(Å <sup>2</sup> )	Q<0.9
4	OLA	A	1207	8/20	0.58	0.16	110,120,123,125	0
5	NA	A	1209	1/1	0.83	0.14	95,95,95,95	0
3	CLR	A	1202	28/28	0.85	0.14	108,120,124,127	0
4	OLA	A	1208	9/20	0.87	0.13	94,100,115,118	0
3	CLR	A	1203	28/28	0.88	0.13	110,123,127,128	0
4	OLA	A	1206	18/20	0.89	0.14	94,104,141,142	0
3	CLR	A	1204	28/28	0.91	0.11	102,121,126,129	0
4	OLA	A	1205	20/20	0.93	0.10	88,100,115,118	0
2	9Y2	A	1201	24/24	0.94	0.12	90,96,98,107	0

The following is a graphical depiction of the model fit to experimental electron density of all instances of the Ligand of Interest. In addition, ligands with molecular weight > 250 and outliers as shown on the geometry validation Tables will also be included. Each fit is shown from different orientation to approximate a three-dimensional view.

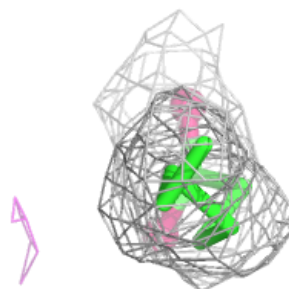
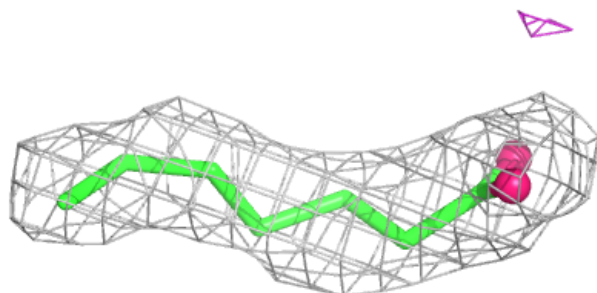
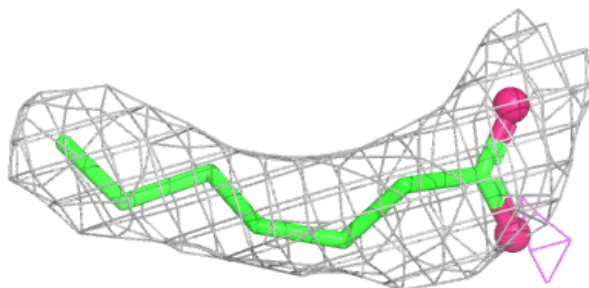


**Electron density around CLR A 1202:**

$2mF_o-DF_c$  (at 0.7 rmsd) in gray  
 $mF_o-DF_c$  (at 3 rmsd) in purple (negative)  
and green (positive)

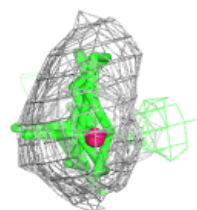
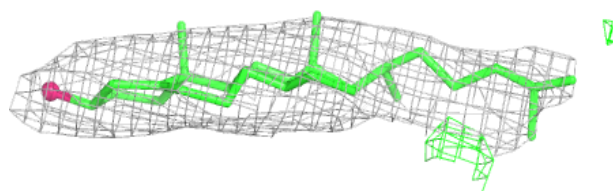
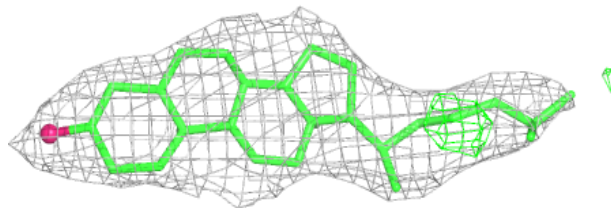
**Electron density around OLA A 1208:**

$2mF_o-DF_c$  (at 0.7 rmsd) in gray  
 $mF_o-DF_c$  (at 3 rmsd) in purple (negative)  
and green (positive)

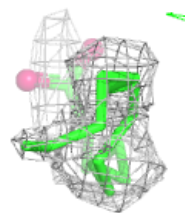
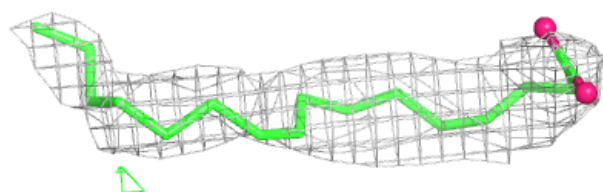
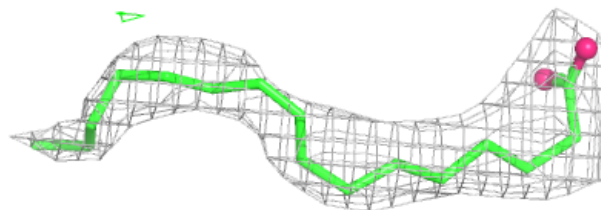


**Electron density around CLR A 1203:**

$2mF_o-DF_c$  (at 0.7 rmsd) in gray  
 $mF_o-DF_c$  (at 3 rmsd) in purple (negative)  
and green (positive)

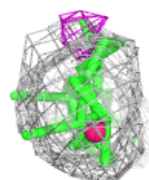
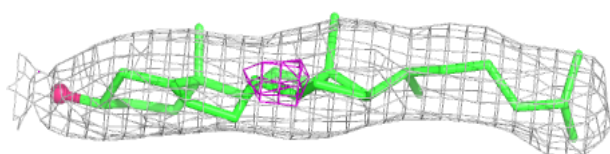
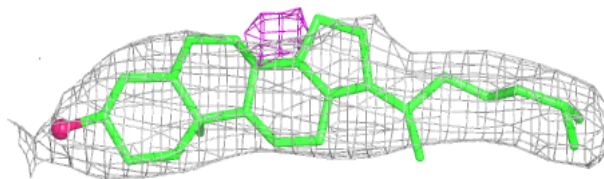
**Electron density around OLA A 1206:**

$2mF_o-DF_c$  (at 0.7 rmsd) in gray  
 $mF_o-DF_c$  (at 3 rmsd) in purple (negative)  
and green (positive)

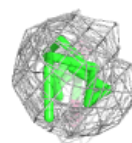
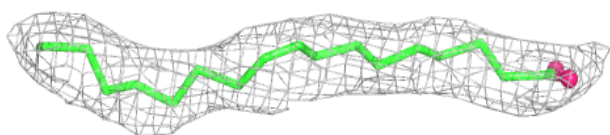
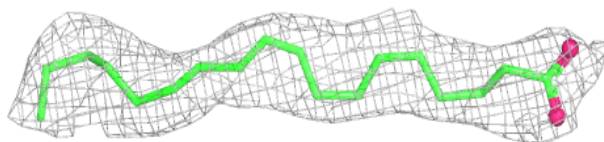


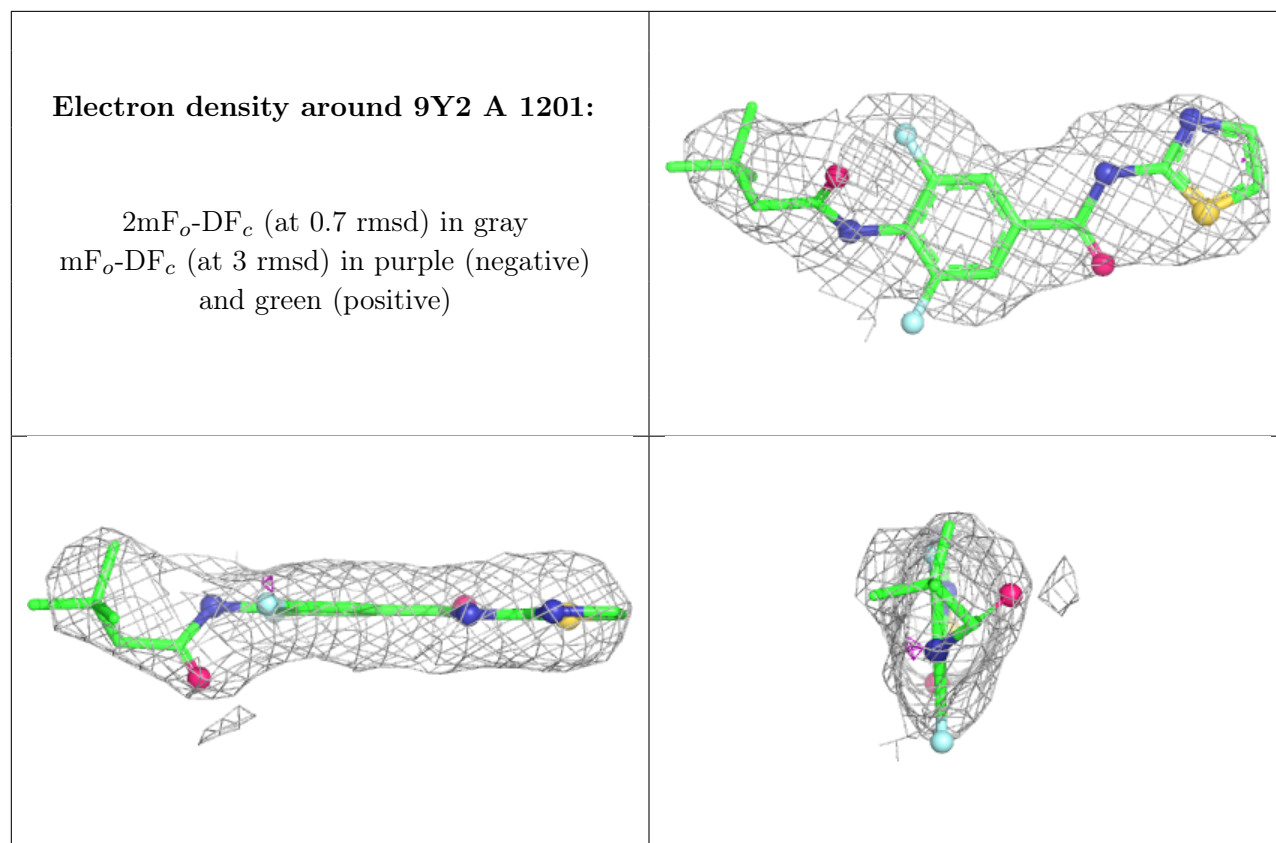
**Electron density around CLR A 1204:**

$2mF_o-DF_c$  (at 0.7 rmsd) in gray  
 $mF_o-DF_c$  (at 3 rmsd) in purple (negative)  
and green (positive)

**Electron density around OLA A 1205:**

$2mF_o-DF_c$  (at 0.7 rmsd) in gray  
 $mF_o-DF_c$  (at 3 rmsd) in purple (negative)  
and green (positive)





## 6.5 Other polymers [i](#)

There are no such residues in this entry.