



# Full wwPDB X-ray Structure Validation Report ⓘ

Mar 8, 2026 – 01:09 AM UTC

PDB ID : 8A46 / pdb\_00008a46  
Title : Crystal structure of the human Kelch domain of Keap1 in complex with compound S217879  
Authors : Weber, C.; Vuillard, L.; Delerive, P.; Miallau, L.  
Deposited on : 2022-06-10  
Resolution : 1.32 Å (reported)

This is a Full wwPDB X-ray Structure Validation Report for a publicly released PDB entry.

We welcome your comments at [validation@mail.wwpdb.org](mailto:validation@mail.wwpdb.org)

A user guide is available at

<https://www.wwpdb.org/validation/2017/XrayValidationReportHelp>

with specific help available everywhere you see the ⓘ symbol.

The types of validation reports are described at

<http://www.wwpdb.org/validation/2017/FAQs#types>.

---

The following versions of software and data (see [references ⓘ](#)) were used in the production of this report:

MolProbity : 4-5-2 with Phenix2.0  
Mogul : 2022.3.0, CSD as543be (2022)  
Xtrriage (Phenix) : 2.0  
EDS : 3.0  
Buster-report : wwPDB partial adaption of 1.1.7 (2018)  
Percentile statistics : 20250101.v01 (using entries in the PDB archive January 1st 2025)  
CCP4 : 9.0.010 (Gargrove)  
Density-Fitness : 1.0.12  
Ideal geometry (proteins) : Engh & Huber (2001)  
Ideal geometry (DNA, RNA) : Parkinson et al. (1996)  
Validation Pipeline (wwPDB-VP) : 2.49

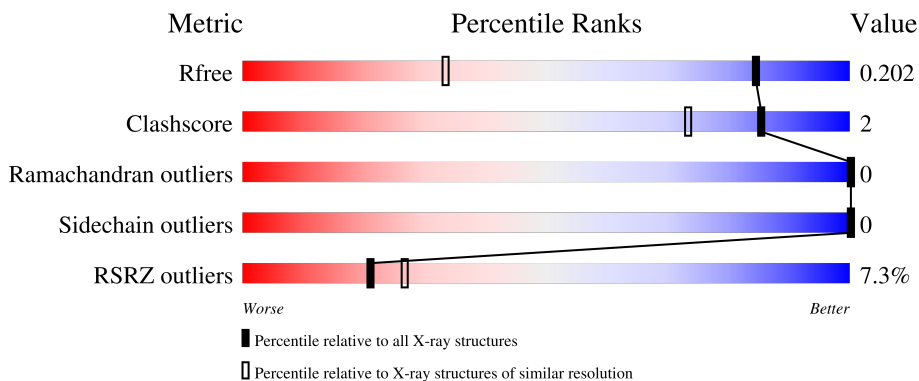
# 1 Overall quality at a glance

The following experimental techniques were used to determine the structure:

*X-RAY DIFFRACTION*

The reported resolution of this entry is 1.32 Å.

Percentile scores (ranging between 0-100) for global validation metrics of the entry are shown in the following graphic. The table shows the number of entries on which the scores are based.



Metric	Whole archive (#Entries)	Similar resolution (#Entries, resolution range(Å))
$R_{free}$	180053	2531 (1.34-1.30)
Clashscore	190562	2585 (1.34-1.30)
Ramachandran outliers	187476	2528 (1.34-1.30)
Sidechain outliers	187428	2528 (1.34-1.30)
RSRZ outliers	180081	2528 (1.34-1.30)

The table below summarises the geometric issues observed across the polymeric chains and their fit to the electron density. The red, orange, yellow and green segments of the lower bar indicate the fraction of residues that contain outliers for  $\geq 3$ , 2, 1 and 0 types of geometric quality criteria respectively. A grey segment represents the fraction of residues that are not modelled. The numeric value for each fraction is indicated below the corresponding segment, with a dot representing fractions  $\leq 5\%$ . The upper red bar (where present) indicates the fraction of residues that have poor fit to the electron density. The numeric value is given above the bar.

Mol	Chain	Length	Quality of chain
1	A	308	

The following table lists non-polymeric compounds, carbohydrate monomers and non-standard residues in protein, DNA, RNA chains that are outliers for geometric or electron-density-fit criteria:

Mol	Type	Chain	Res	Chirality	Geometry	Clashes	Electron density
2	L5F	A	701[B]	X	-	-	-

## 2 Entry composition [i](#)

There are 3 unique types of molecules in this entry. The entry contains 2591 atoms, of which 62 are hydrogens and 0 are deuteriums.

In the tables below, the ZeroOcc column contains the number of atoms modelled with zero occupancy, the AltConf column contains the number of residues with at least one atom in alternate conformation and the Trace column contains the number of residues modelled with at most 2 atoms.

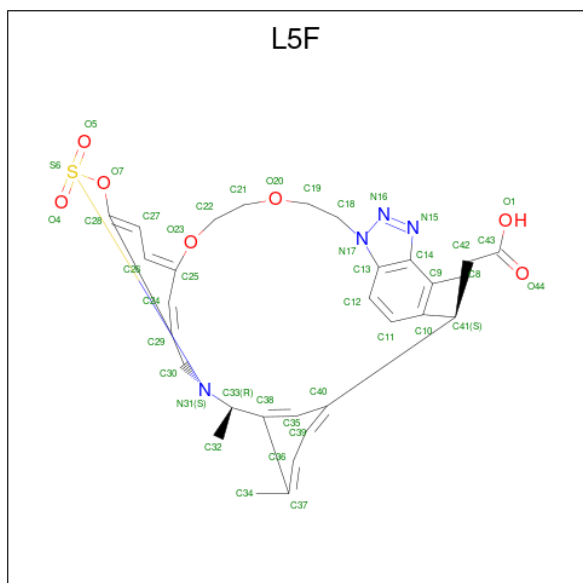
- Molecule 1 is a protein called Kelch-like ECH-associated protein 1.

Mol	Chain	Residues	Atoms					ZeroOcc	AltConf	Trace
			Total	C	N	O	S			
1	A	288	2284	1420	411	435	18	0	11	0

There are 5 discrepancies between the modelled and reference sequences:

Chain	Residue	Modelled	Actual	Comment	Reference
A	317	GLY	-	expression tag	UNP Q9Z2X8
A	318	SER	-	expression tag	UNP Q9Z2X8
A	319	HIS	-	expression tag	UNP Q9Z2X8
A	320	MET	-	expression tag	UNP Q9Z2X8
A	321	GLY	-	expression tag	UNP Q9Z2X8

- Molecule 2 is 2-[(1S,2R,8S)-2,4,32-trimethyl-28,28-bis(oxidanylidene)-19,22,27-trioxa-28 $\lambda^6$ -thia-1,14,15,16-tetrahexacyclo[21.5.3.1 $\{3,7\}$ .1 $\{9,13\}$ .0 $\{12,16\}$ .0 $\{26,30\}$ ]tritriaconta-3(33),4,6,9(32),10,12,14,23,25,30-decaen-8-yl]ethanoic acid (CCD ID: L5F) (formula: C<sub>30</sub>H<sub>32</sub>N<sub>4</sub>O<sub>7</sub>S) (labeled as "Ligand of Interest" by depositor).



Mol	Chain	Residues	Atoms						ZeroOcc	AltConf
			Total	C	H	N	O	S		
2	A	1	146	60	62	8	14	2	62	1

- Molecule 3 is water.

Mol	Chain	Residues	Atoms		ZeroOcc	AltConf
3	A	161	Total	O	0	0
			161	161		



## 4 Data and refinement statistics

Property	Value	Source
Space group	P 61	Depositor
Cell constants a, b, c, $\alpha$ , $\beta$ , $\gamma$	103.37Å 103.37Å 55.71Å 90.00° 90.00° 120.00°	Depositor
Resolution (Å)	89.52 – 1.32 89.52 – 1.32	Depositor EDS
% Data completeness (in resolution range)	77.5 (89.52-1.32) 77.6 (89.52-1.32)	Depositor EDS
$R_{merge}$	0.06	Depositor
$R_{sym}$	(Not available)	Depositor
$\langle I/\sigma(I) \rangle$ <sup>1</sup>	1.60 (at 1.32Å)	Xtrriage
Refinement program	BUSTER 2.11.8	Depositor
R, $R_{free}$	0.198 , 0.207 0.191 , 0.202	Depositor DCC
$R_{free}$ test set	3036 reflections (4.95%)	wwPDB-VP
Wilson B-factor (Å <sup>2</sup> )	17.7	Xtrriage
Anisotropy	0.064	Xtrriage
Bulk solvent $k_{sol}$ (e/Å <sup>3</sup> ), $B_{sol}$ (Å <sup>2</sup> )	0.37 , 30.1	EDS
L-test for twinning <sup>2</sup>	$\langle  L  \rangle = 0.50$ , $\langle L^2 \rangle = 0.33$	Xtrriage
Estimated twinning fraction	0.032 for h,-h-k,-l	Xtrriage
$F_o, F_c$ correlation	0.97	EDS
Total number of atoms	2591	wwPDB-VP
Average B, all atoms (Å <sup>2</sup> )	21.0	wwPDB-VP

Xtrriage's analysis on translational NCS is as follows: *The largest off-origin peak in the Patterson function is 4.88% of the height of the origin peak. No significant pseudotranslation is detected.*

<sup>1</sup>Intensities estimated from amplitudes.

<sup>2</sup>Theoretical values of  $\langle |L| \rangle$ ,  $\langle L^2 \rangle$  for acentric reflections are 0.5, 0.333 respectively for untwinned datasets, and 0.375, 0.2 for perfectly twinned datasets.

## 5 Model quality [i](#)

### 5.1 Standard geometry [i](#)

Bond lengths and bond angles in the following residue types are not validated in this section: L5F

The Z score for a bond length (or angle) is the number of standard deviations the observed value is removed from the expected value. A bond length (or angle) with  $|Z| > 5$  is considered an outlier worth inspection. RMSZ is the root-mean-square of all Z scores of the bond lengths (or angles).

Mol	Chain	Bond lengths		Bond angles	
		RMSZ	# Z  >5	RMSZ	# Z  >5
1	A	0.70	1/2348 (0.0%)	0.97	0/3195

All (1) bond length outliers are listed below:

Mol	Chain	Res	Type	Atoms	Z	Observed(Å)	Ideal(Å)
1	A	499	MET	SD-CE	-7.56	1.60	1.79

There are no bond angle outliers.

There are no chirality outliers.

There are no planarity outliers.

### 5.2 Too-close contacts [i](#)

In the following table, the Non-H and H(model) columns list the number of non-hydrogen atoms and hydrogen atoms in the chain respectively. The H(added) column lists the number of hydrogen atoms added and optimized by MolProbity. The Clashes column lists the number of clashes within the asymmetric unit, whereas Symm-Clashes lists symmetry-related clashes.

Mol	Chain	Non-H	H(model)	H(added)	Clashes	Symm-Clashes
1	A	2284	0	2175	10	0
2	A	84	62	0	0	0
3	A	161	0	0	0	0
All	All	2529	62	2175	10	0

The all-atom clashscore is defined as the number of clashes found per 1000 atoms (including hydrogen atoms). The all-atom clashscore for this structure is 2.

All (10) close contacts within the same asymmetric unit are listed below, sorted by their clash magnitude.

Atom-1	Atom-2	Interatomic distance (Å)	Clash overlap (Å)
1:A:466:ALA:HB1	1:A:514:VAL:HG23	1.73	0.69
1:A:552:HIS:HE1	1:A:593:GLU:OE2	1.80	0.63
1:A:554[B]:ARG:HD2	1:A:568[B]:VAL:CG1	2.30	0.61
1:A:380:ARG:HD2	1:A:389:ASP:OD1	2.02	0.59
1:A:554[B]:ARG:HD2	1:A:568[B]:VAL:HG11	1.89	0.53
1:A:557:LEU:H	1:A:557:LEU:HD23	1.74	0.53
1:A:461:ILE:C	1:A:461:ILE:HD12	2.40	0.47
1:A:365:LEU:H	1:A:365:LEU:HD23	1.81	0.45
1:A:552:HIS:CE1	1:A:593:GLU:OE2	2.66	0.45
1:A:421:ILE:HD11	1:A:472:LEU:HB2	2.00	0.42

There are no symmetry-related clashes.

### 5.3 Torsion angles [i](#)

#### 5.3.1 Protein backbone [i](#)

In the following table, the Percentiles column shows the percent Ramachandran outliers of the chain as a percentile score with respect to all X-ray entries followed by that with respect to entries of similar resolution.

The Analysed column shows the number of residues for which the backbone conformation was analysed, and the total number of residues.

Mol	Chain	Analysed	Favoured	Allowed	Outliers	Percentiles
1	A	297/308 (96%)	285 (96%)	12 (4%)	0	<a href="#">100</a> <a href="#">100</a>

There are no Ramachandran outliers to report.

#### 5.3.2 Protein sidechains [i](#)

In the following table, the Percentiles column shows the percent sidechain outliers of the chain as a percentile score with respect to all X-ray entries followed by that with respect to entries of similar resolution.

The Analysed column shows the number of residues for which the sidechain conformation was analysed, and the total number of residues.

Mol	Chain	Analysed	Rotameric	Outliers	Percentiles
1	A	246/253 (97%)	246 (100%)	0	<a href="#">100</a> <a href="#">100</a>

There are no protein residues with a non-rotameric sidechain to report.

Sometimes sidechains can be flipped to improve hydrogen bonding and reduce clashes. All (5) such sidechains are listed below:

Mol	Chain	Res	Type
1	A	381	ASN
1	A	414	ASN
1	A	424	HIS
1	A	552	HIS
1	A	575	HIS

### 5.3.3 RNA [i](#)

There are no RNA molecules in this entry.

### 5.4 Non-standard residues in protein, DNA, RNA chains [i](#)

There are no non-standard protein/DNA/RNA residues in this entry.

### 5.5 Carbohydrates [i](#)

There are no oligosaccharides in this entry.

### 5.6 Ligand geometry [i](#)

2 ligands are modelled in this entry.

In the following table, the Counts columns list the number of bonds (or angles) for which Mogul statistics could be retrieved, the number of bonds (or angles) that are observed in the model and the number of bonds (or angles) that are defined in the Chemical Component Dictionary. The Link column lists molecule types, if any, to which the group is linked. The Z score for a bond length (or angle) is the number of standard deviations the observed value is removed from the expected value. A bond length (or angle) with  $|Z| > 2$  is considered an outlier worth inspection. RMSZ is the root-mean-square of all Z scores of the bond lengths (or angles).

Mol	Type	Chain	Res	Link	Bond lengths			Bond angles		
					Counts	RMSZ	$\# Z  > 2$	Counts	RMSZ	$\# Z  > 2$
2	L5F	A	701[A]	-	46,47,47	0.37	0	61,70,70	0.86	2 (3%)
2	L5F	A	701[B]	-	46,47,47	0.37	0	61,70,70	0.84	2 (3%)

In the following table, the Chirals column lists the number of chiral outliers, the number of chiral centers analysed, the number of these observed in the model and the number defined in the

Chemical Component Dictionary. Similar counts are reported in the Torsion and Rings columns. '-' means no outliers of that kind were identified.

Mol	Type	Chain	Res	Link	Chirals	Torsions	Rings
2	L5F	A	701[A]	-	-	0/27/44/44	0/4/6/6
2	L5F	A	701[B]	-	1/1/5/5	10/27/44/44	0/4/6/6

There are no bond length outliers.

All (4) bond angle outliers are listed below:

Mol	Chain	Res	Type	Atoms	Z	Observed(°)	Ideal(°)
2	A	701[A]	L5F	O7-S6-N31	-3.77	97.58	103.21
2	A	701[B]	L5F	O7-S6-N31	-2.34	99.72	103.21
2	A	701[B]	L5F	C41-C42-C43	2.20	116.14	113.03
2	A	701[A]	L5F	O44-C43-C42	-2.03	116.61	122.84

All (1) chirality outliers are listed below:

Mol	Chain	Res	Type	Atom
2	A	701[B]	L5F	N31

All (10) torsion outliers are listed below:

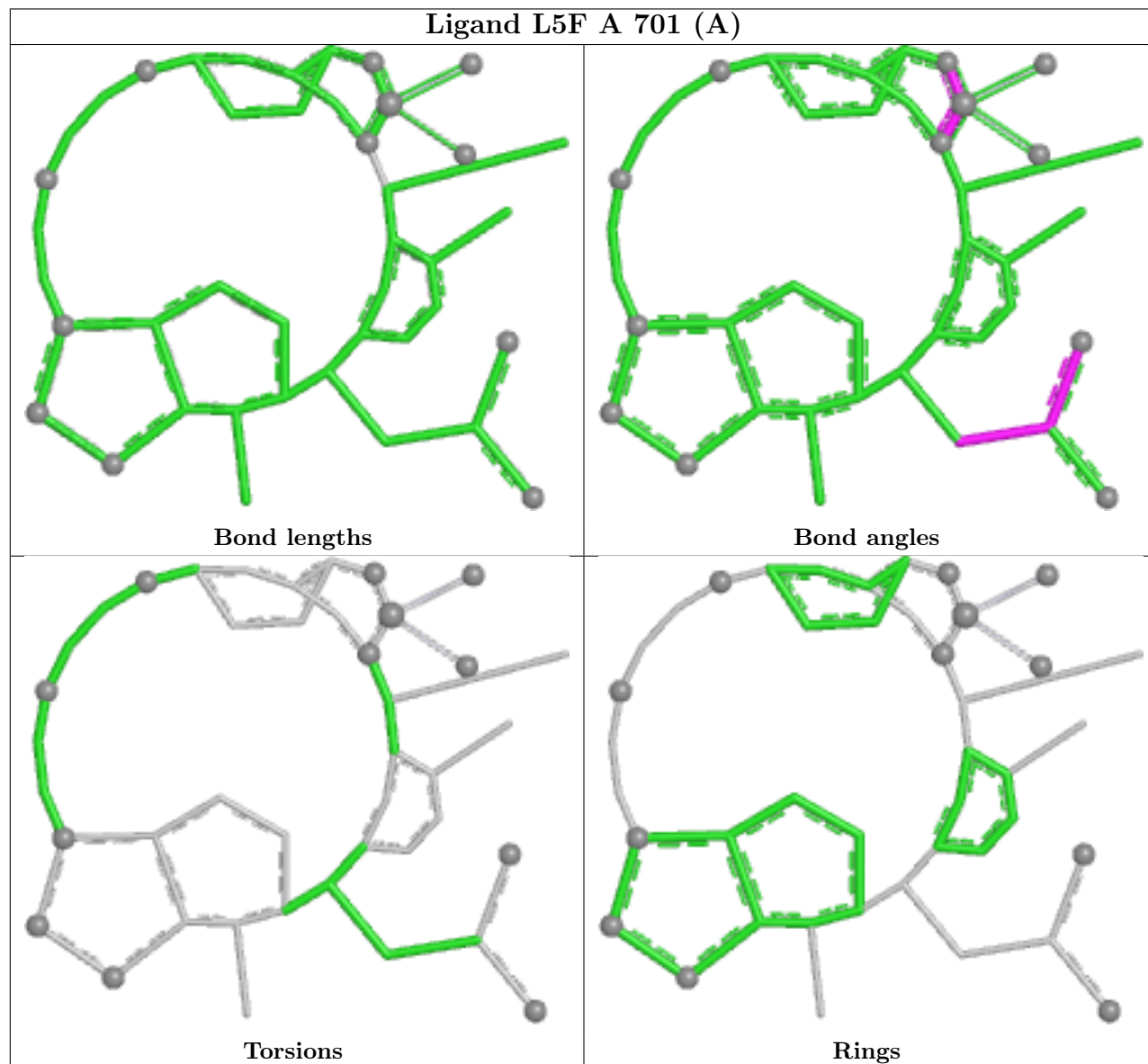
Mol	Chain	Res	Type	Atoms
2	A	701[B]	L5F	C19-C18-N17-C13
2	A	701[B]	L5F	C19-C18-N17-N16
2	A	701[B]	L5F	O20-C21-C22-O23
2	A	701[B]	L5F	C22-C21-O20-C19
2	A	701[B]	L5F	C21-C22-O23-C25
2	A	701[B]	L5F	C18-C19-O20-C21
2	A	701[B]	L5F	C41-C42-C43-O1
2	A	701[B]	L5F	C41-C42-C43-O44
2	A	701[B]	L5F	C11-C10-C41-C42
2	A	701[B]	L5F	C11-C10-C41-C40

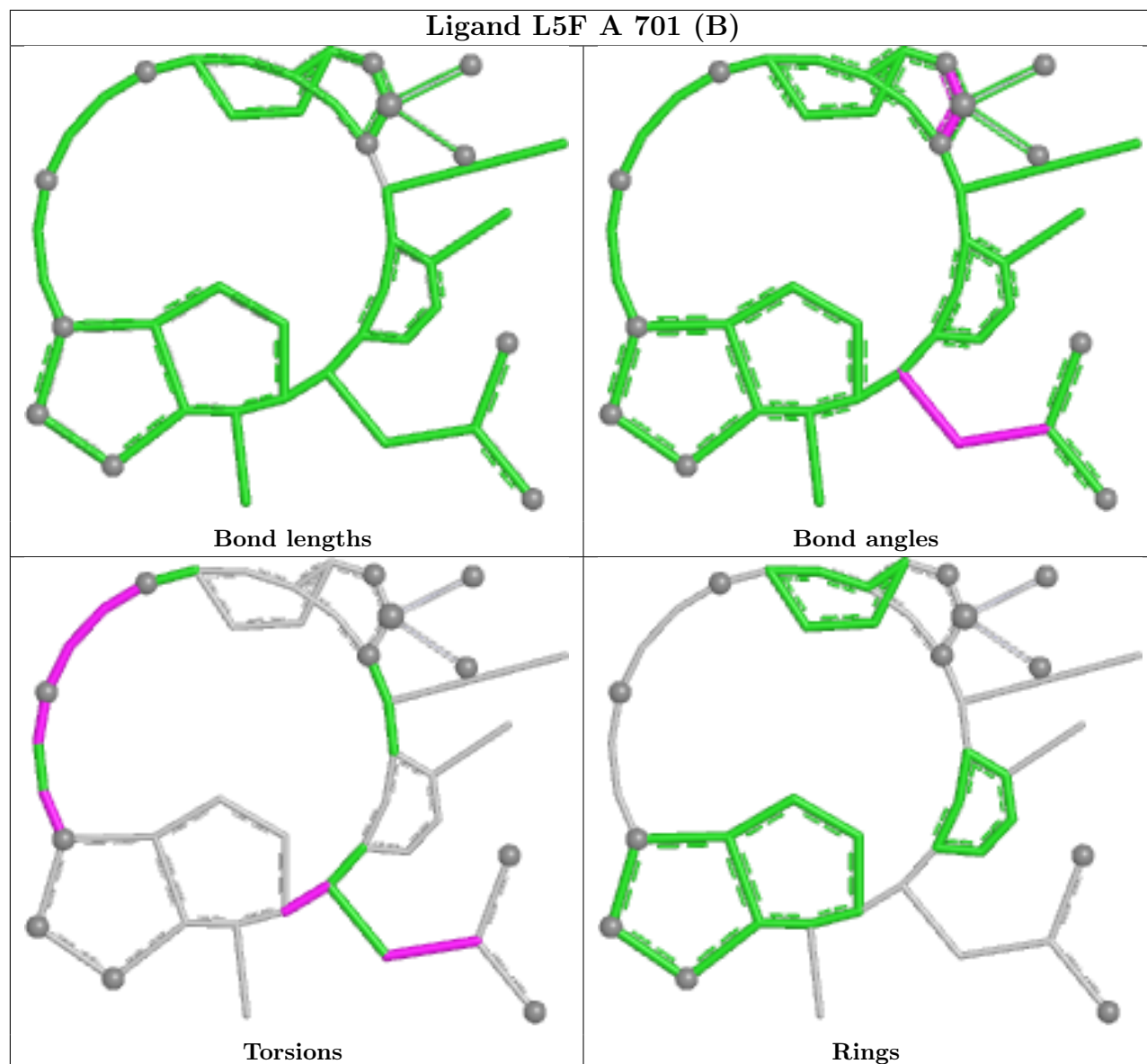
There are no ring outliers.

No monomer is involved in short contacts.

The following is a two-dimensional graphical depiction of Mogul quality analysis of bond lengths, bond angles, torsion angles, and ring geometry for all instances of the Ligand of Interest. In addition, ligands with molecular weight > 250 and outliers as shown on the validation Tables will also be included. For torsion angles, if less than 5% of the Mogul distribution of torsion angles is within 10 degrees of the torsion angle in question, then that torsion angle is considered an outlier. Any bond that is central to one or more torsion angles identified as an outlier by Mogul will be

highlighted in the graph. For rings, the root-mean-square deviation (RMSD) between the ring in question and similar rings identified by Mogul is calculated over all ring torsion angles. If the average RMSD is greater than 60 degrees and the minimal RMSD between the ring in question and any Mogul-identified rings is also greater than 60 degrees, then that ring is considered an outlier. The outliers are highlighted in purple. The color gray indicates Mogul did not find sufficient equivalents in the CSD to analyse the geometry.





## 5.7 Other polymers [i](#)

There are no such residues in this entry.

## 5.8 Polymer linkage issues [i](#)

There are no chain breaks in this entry.

## 6 Fit of model and data [i](#)

### 6.1 Protein, DNA and RNA chains [i](#)

In the following table, the column labelled ‘#RSRZ> 2’ contains the number (and percentage) of RSRZ outliers, followed by percent RSRZ outliers for the chain as percentile scores relative to all X-ray entries and entries of similar resolution. The OWAB column contains the minimum, median, 95<sup>th</sup> percentile and maximum values of the occupancy-weighted average B-factor per residue. The column labelled ‘Q< 0.9’ lists the number of (and percentage) of residues with an average occupancy less than 0.9.

Mol	Chain	Analysed	<RSRZ>	#RSRZ>2	OWAB(Å <sup>2</sup> )	Q<0.9
1	A	288/308 (93%)	0.73	21 (7%) <span style="border: 1px solid red; padding: 2px;">21</span> <span style="border: 1px solid red; padding: 2px;">27</span>	7, 19, 33, 49	11 (3%)

All (21) RSRZ outliers are listed below:

Mol	Chain	Res	Type	RSRZ
1	A	325	GLY	6.4
1	A	384	PRO	6.0
1	A	386	GLY	5.8
1	A	385	ASP	4.9
1	A	383	SER	4.8
1	A	399	MET	3.9
1	A	539[A]	VAL	3.9
1	A	594[A]	VAL	3.7
1	A	382	ASN	3.6
1	A	326	ARG	3.1
1	A	610	MET	3.1
1	A	528	GLN	3.1
1	A	612	PRO	3.0
1	A	551	ARG	2.9
1	A	516	HIS	2.7
1	A	372	GLY	2.7
1	A	481	THR	2.5
1	A	400	THR	2.4
1	A	336	ARG	2.1
1	A	422	ASP	2.0
1	A	552	HIS	2.0

### 6.2 Non-standard residues in protein, DNA, RNA chains [i](#)

There are no non-standard protein/DNA/RNA residues in this entry.

### 6.3 Carbohydrates [i](#)

There are no oligosaccharides in this entry.

### 6.4 Ligands [i](#)

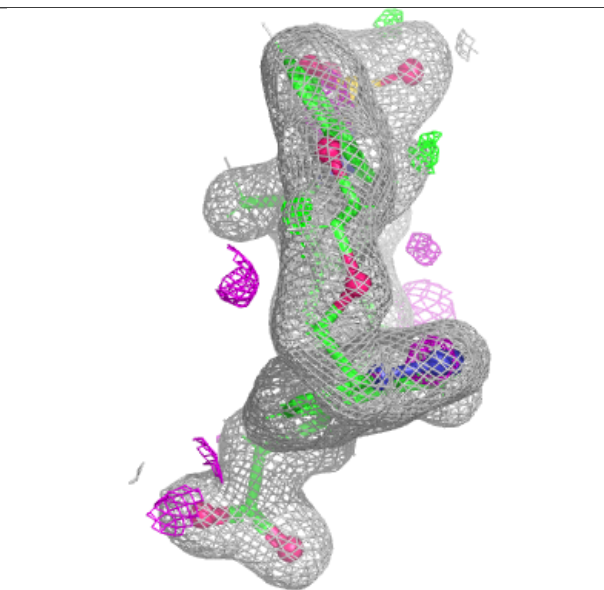
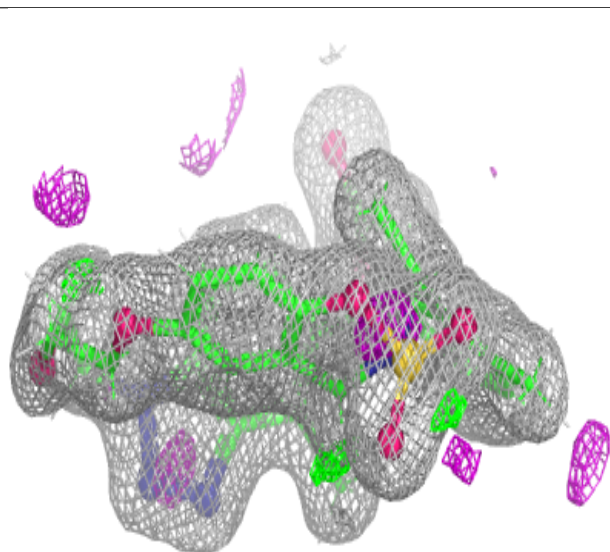
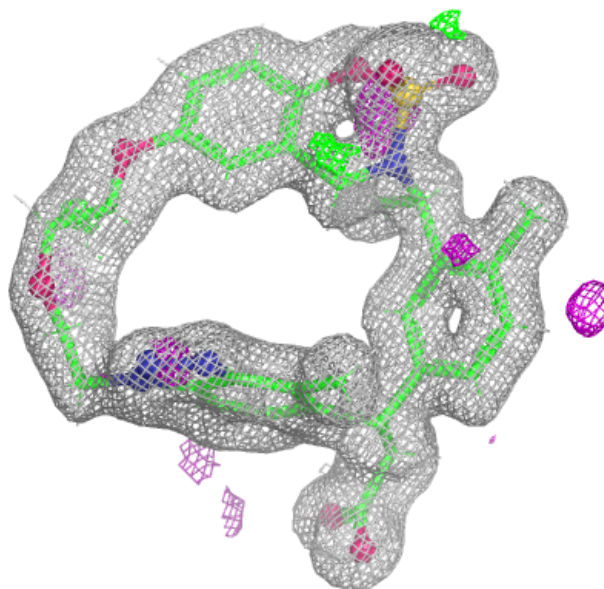
In the following table, the Atoms column lists the number of modelled atoms in the group and the number defined in the chemical component dictionary. The B-factors column lists the minimum, median, 95<sup>th</sup> percentile and maximum values of B factors of atoms in the group. The column labelled 'Q< 0.9' lists the number of atoms with occupancy less than 0.9.

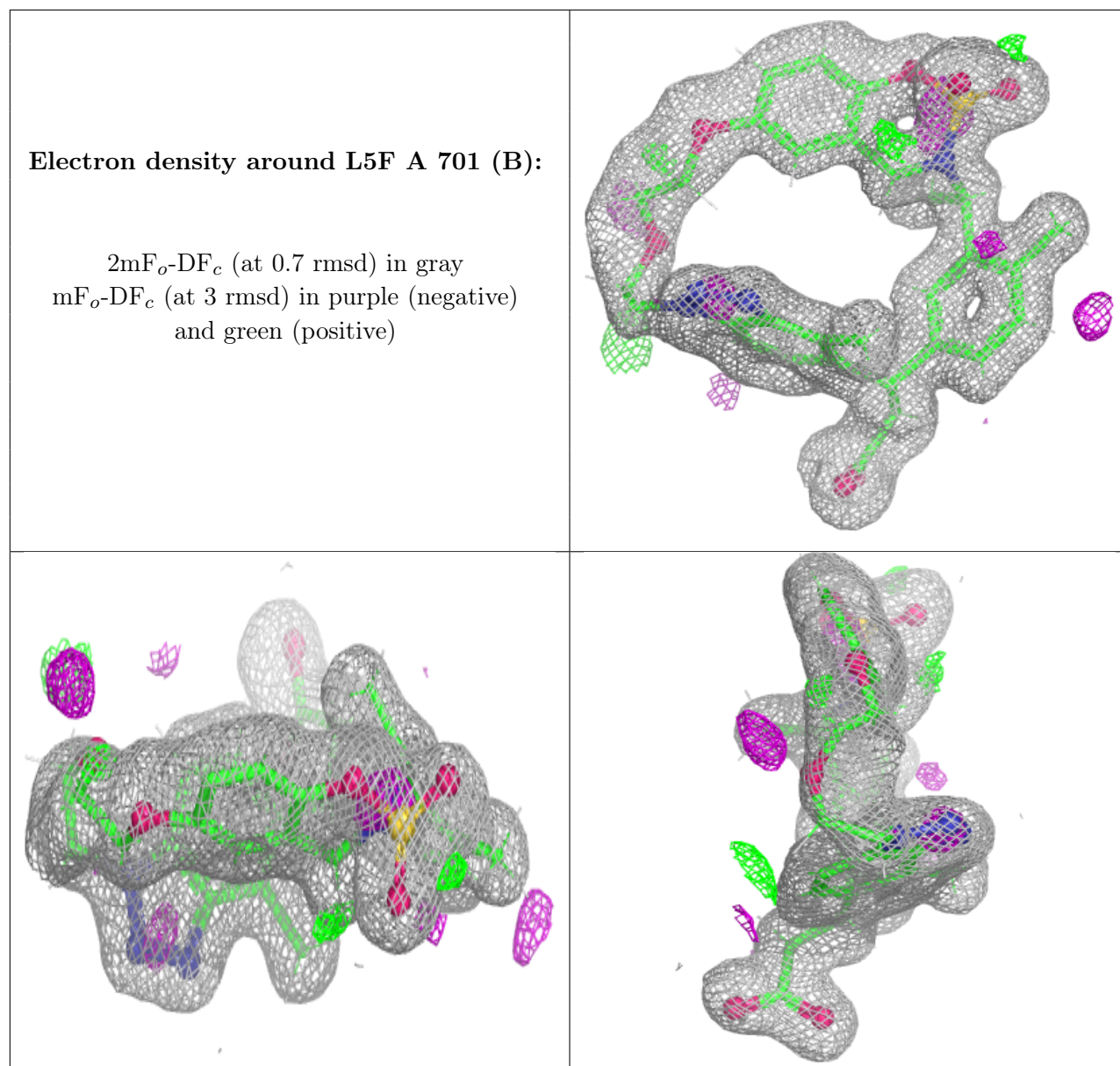
Mol	Type	Chain	Res	Atoms	RSCC	RSR	B-factors(Å <sup>2</sup> )	Q<0.9
2	L5F	A	701[A]	42/42	0.96	0.08	11,13,20,21	73
2	L5F	A	701[B]	42/42	0.96	0.08	30,33,35,35	73

The following is a graphical depiction of the model fit to experimental electron density of all instances of the Ligand of Interest. In addition, ligands with molecular weight > 250 and outliers as shown on the geometry validation Tables will also be included. Each fit is shown from different orientation to approximate a three-dimensional view.

**Electron density around L5F A 701 (A):**

$2mF_o-DF_c$  (at 0.7 rmsd) in gray  
 $mF_o-DF_c$  (at 3 rmsd) in purple (negative)  
and green (positive)





## 6.5 Other polymers [i](#)

There are no such residues in this entry.