



Full wwPDB X-ray Structure Validation Report ⓘ

Mar 6, 2026 – 07:35 PM UTC

PDB ID : 8A7F / pdb_00008a7f
Title : Crystal structure of a chimeric LOV-Histidine kinase SB2F1-I66R mutant
(asymmetrical variant, trigonal form with long c axis)
Authors : Batra-Safferling, R.; Arinkin, V.; Granzin, J.
Deposited on : 2022-06-21
Resolution : 2.71 Å (reported)

This is a Full wwPDB X-ray Structure Validation Report for a publicly released PDB entry.

We welcome your comments at validation@mail.wwpdb.org

A user guide is available at

<https://www.wwpdb.org/validation/2017/XrayValidationReportHelp>

with specific help available everywhere you see the ⓘ symbol.

The types of validation reports are described at

<http://www.wwpdb.org/validation/2017/FAQs#types>.

The following versions of software and data (see [references ⓘ](#)) were used in the production of this report:

MolProbity : 4-5-2 with Phenix2.0
Mogul : 2022.3.0, CSD as543be (2022)
Xtrriage (Phenix) : 2.0
EDS : 3.0
Buster-report : wwPDB partial adaption of 1.1.7 (2018)
Percentile statistics : 20250101.v01 (using entries in the PDB archive January 1st 2025)
CCP4 : 9.0.010 (Gargrove)
Density-Fitness : 1.0.12
Ideal geometry (proteins) : Engh & Huber (2001)
Ideal geometry (DNA, RNA) : Parkinson et al. (1996)
Validation Pipeline (wwPDB-VP) : 2.49

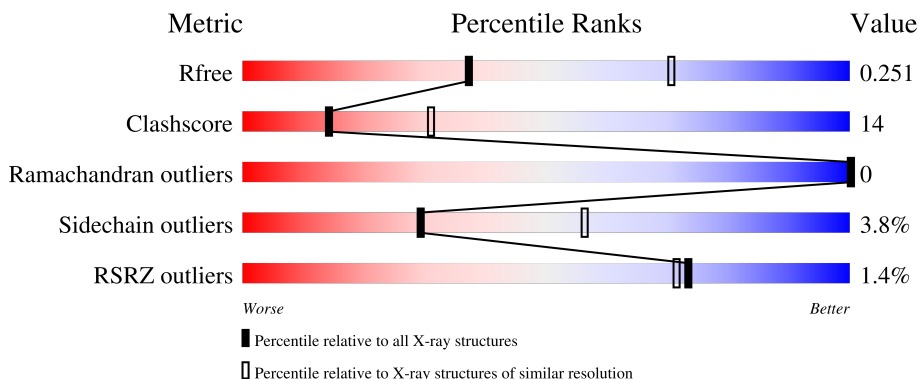
1 Overall quality at a glance

The following experimental techniques were used to determine the structure:

X-RAY DIFFRACTION

The reported resolution of this entry is 2.71 Å.

Percentile scores (ranging between 0-100) for global validation metrics of the entry are shown in the following graphic. The table shows the number of entries on which the scores are based.



Metric	Whole archive (#Entries)	Similar resolution (#Entries, resolution range(Å))
R_{free}	180053	4348 (2.74-2.70)
Clashscore	190562	4665 (2.74-2.70)
Ramachandran outliers	187476	4584 (2.74-2.70)
Sidechain outliers	187428	4585 (2.74-2.70)
RSRZ outliers	180081	4348 (2.74-2.70)

The table below summarises the geometric issues observed across the polymeric chains and their fit to the electron density. The red, orange, yellow and green segments of the lower bar indicate the fraction of residues that contain outliers for ≥ 3 , 2, 1 and 0 types of geometric quality criteria respectively. A grey segment represents the fraction of residues that are not modelled. The numeric value for each fraction is indicated below the corresponding segment, with a dot representing fractions $\leq 5\%$. The upper red bar (where present) indicates the fraction of residues that have poor fit to the electron density. The numeric value is given above the bar.

Mol	Chain	Length	Quality of chain
1	A	388	 71% 22% • 6%
1	B	388	 73% 19% • 6%

The following table lists non-polymeric compounds, carbohydrate monomers and non-standard residues in protein, DNA, RNA chains that are outliers for geometric or electron-density-fit criteria:

Mol	Type	Chain	Res	Chirality	Geometry	Clashes	Electron density
2	ATP	B	401	-	-	X	-

2 Entry composition [i](#)

There are 3 unique types of molecules in this entry. The entry contains 5786 atoms, of which 0 are hydrogens and 0 are deuteriums.

In the tables below, the ZeroOcc column contains the number of atoms modelled with zero occupancy, the AltConf column contains the number of residues with at least one atom in alternate conformation and the Trace column contains the number of residues modelled with at most 2 atoms.

- Molecule 1 is a protein called Putative Sensory box protein,Sensor protein FixL.

Mol	Chain	Residues	Atoms					ZeroOcc	AltConf	Trace
			Total	C	N	O	S			
1	A	363	2826	1746	516	551	13	80	0	0
1	B	365	2836	1751	518	554	13	58	0	0

There are 42 discrepancies between the modelled and reference sequences:

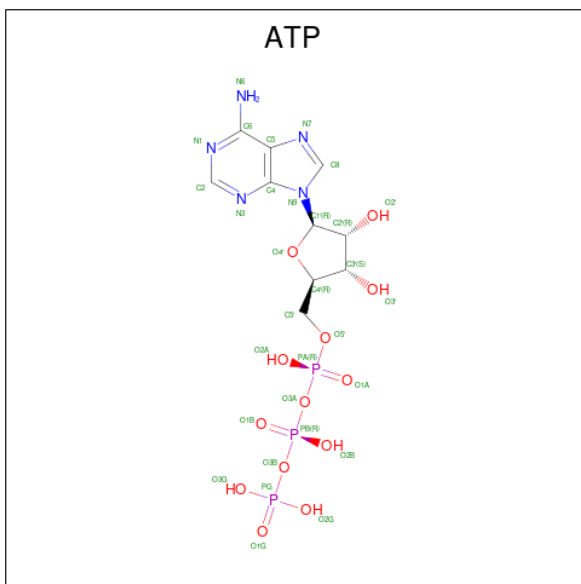
Chain	Residue	Modelled	Actual	Comment	Reference
A	-19	MET	-	initiating methionine	UNP Q88JB0
A	-18	GLY	-	expression tag	UNP Q88JB0
A	-17	SER	-	expression tag	UNP Q88JB0
A	-16	SER	-	expression tag	UNP Q88JB0
A	-15	HIS	-	expression tag	UNP Q88JB0
A	-14	HIS	-	expression tag	UNP Q88JB0
A	-13	HIS	-	expression tag	UNP Q88JB0
A	-12	HIS	-	expression tag	UNP Q88JB0
A	-11	HIS	-	expression tag	UNP Q88JB0
A	-10	HIS	-	expression tag	UNP Q88JB0
A	-9	SER	-	expression tag	UNP Q88JB0
A	-8	SER	-	expression tag	UNP Q88JB0
A	-7	GLY	-	expression tag	UNP Q88JB0
A	-6	LEU	-	expression tag	UNP Q88JB0
A	-5	VAL	-	expression tag	UNP Q88JB0
A	-4	PRO	-	expression tag	UNP Q88JB0
A	-3	ARG	-	expression tag	UNP Q88JB0
A	-2	GLY	-	expression tag	UNP Q88JB0
A	-1	SER	-	expression tag	UNP Q88JB0
A	0	HIS	-	expression tag	UNP Q88JB0
A	66	ARG	ILE	engineered mutation	UNP Q88JB0
B	-19	MET	-	initiating methionine	UNP Q88JB0
B	-18	GLY	-	expression tag	UNP Q88JB0
B	-17	SER	-	expression tag	UNP Q88JB0
B	-16	SER	-	expression tag	UNP Q88JB0

Continued on next page...

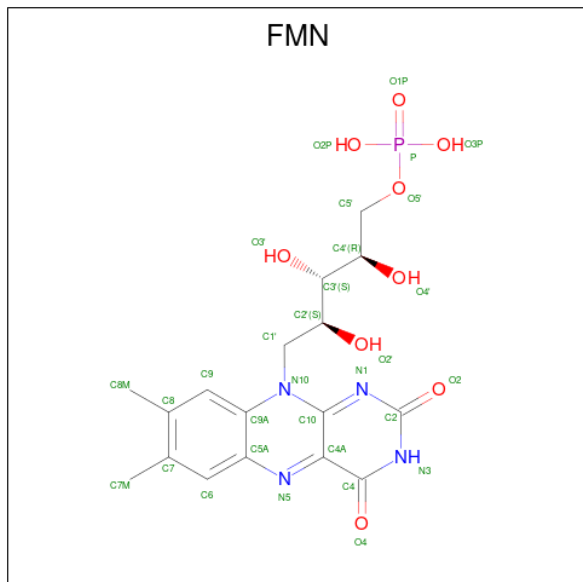
Continued from previous page...

Chain	Residue	Modelled	Actual	Comment	Reference
B	-15	HIS	-	expression tag	UNP Q88JB0
B	-14	HIS	-	expression tag	UNP Q88JB0
B	-13	HIS	-	expression tag	UNP Q88JB0
B	-12	HIS	-	expression tag	UNP Q88JB0
B	-11	HIS	-	expression tag	UNP Q88JB0
B	-10	HIS	-	expression tag	UNP Q88JB0
B	-9	SER	-	expression tag	UNP Q88JB0
B	-8	SER	-	expression tag	UNP Q88JB0
B	-7	GLY	-	expression tag	UNP Q88JB0
B	-6	LEU	-	expression tag	UNP Q88JB0
B	-5	VAL	-	expression tag	UNP Q88JB0
B	-4	PRO	-	expression tag	UNP Q88JB0
B	-3	ARG	-	expression tag	UNP Q88JB0
B	-2	GLY	-	expression tag	UNP Q88JB0
B	-1	SER	-	expression tag	UNP Q88JB0
B	0	HIS	-	expression tag	UNP Q88JB0
B	66	ARG	ILE	engineered mutation	UNP Q88JB0

- Molecule 2 is ADENOSINE-5'-TRIPHOSPHATE (CCD ID: ATP) (formula: $C_{10}H_{16}N_5O_{13}P_3$) (labeled as "Ligand of Interest" by depositor).



- Molecule 3 is FLAVIN MONONUCLEOTIDE (CCD ID: FMN) (formula: $C_{17}H_{21}N_4O_9P$) (labeled as "Ligand of Interest" by depositor).

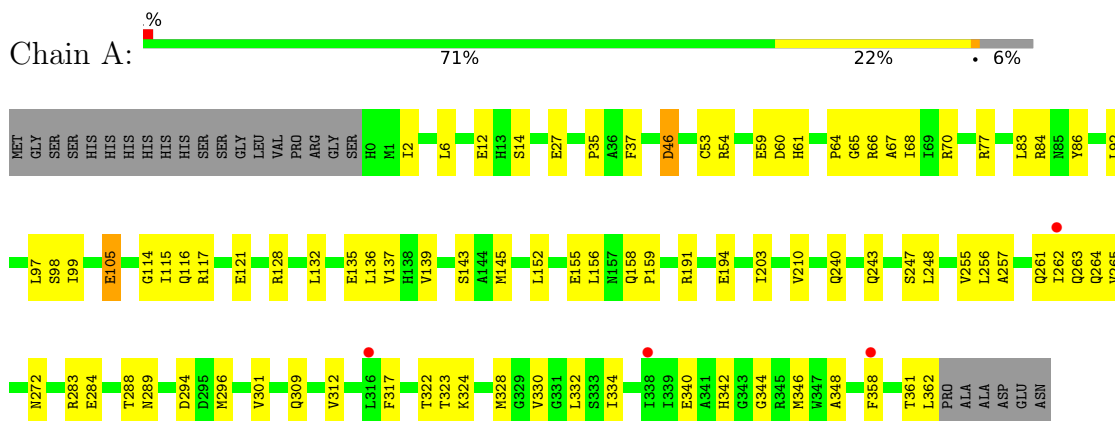


Mol	Chain	Residues	Atoms					ZeroOcc	AltConf
			Total	C	N	O	P		
3	A	1	31	17	4	9	1	0	0
3	B	1	31	17	4	9	1	0	0

3 Residue-property plots [i](#)

These plots are drawn for all protein, RNA, DNA and oligosaccharide chains in the entry. The first graphic for a chain summarises the proportions of the various outlier classes displayed in the second graphic. The second graphic shows the sequence view annotated by issues in geometry and electron density. Residues are color-coded according to the number of geometric quality criteria for which they contain at least one outlier: green = 0, yellow = 1, orange = 2 and red = 3 or more. A red dot above a residue indicates a poor fit to the electron density ($RSRZ > 2$). Stretches of 2 or more consecutive residues without any outlier are shown as a green connector. Residues present in the sample, but not in the model, are shown in grey.

- Molecule 1: Putative Sensory box protein,Sensor protein FixL



- Molecule 1: Putative Sensory box protein,Sensor protein FixL



4 Data and refinement statistics i

Property	Value	Source
Space group	P 31 2 1	Depositor
Cell constants a, b, c, α , β , γ	138.53Å 138.53Å 96.89Å 90.00° 90.00° 120.00°	Depositor
Resolution (Å)	45.34 – 2.71 45.34 – 2.71	Depositor EDS
% Data completeness (in resolution range)	56.1 (45.34-2.71) 56.3 (45.34-2.71)	Depositor EDS
R_{merge}	0.07	Depositor
R_{sym}	(Not available)	Depositor
$\langle I/\sigma(I) \rangle$ ¹	1.10 (at 2.69Å)	Xtrriage
Refinement program	PHENIX 1.19rc6_4061	Depositor
R, R_{free}	0.228 , 0.249 0.232 , 0.251	Depositor DCC
R_{free} test set	1001 reflections (3.38%)	wwPDB-VP
Wilson B-factor (Å ²)	86.4	Xtrriage
Anisotropy	0.049	Xtrriage
Bulk solvent k_{sol} (e/Å ³), B_{sol} (Å ²)	0.29 , 83.7	EDS
L-test for twinning ²	$\langle L \rangle = 0.48$, $\langle L^2 \rangle = 0.30$	Xtrriage
Estimated twinning fraction	0.044 for -h,-k,l	Xtrriage
F_o, F_c correlation	0.95	EDS
Total number of atoms	5786	wwPDB-VP
Average B, all atoms (Å ²)	127.0	wwPDB-VP

Xtrriage's analysis on translational NCS is as follows: *The analyses of the Patterson function reveals a significant off-origin peak that is 27.34 % of the origin peak, indicating pseudo-translational symmetry. The chance of finding a peak of this or larger height randomly in a structure without pseudo-translational symmetry is equal to 2.2396e-03. The detected translational NCS is most likely also responsible for the elevated intensity ratio.*

¹Intensities estimated from amplitudes.

²Theoretical values of $\langle |L| \rangle$, $\langle L^2 \rangle$ for acentric reflections are 0.5, 0.333 respectively for untwinned datasets, and 0.375, 0.2 for perfectly twinned datasets.

5 Model quality

5.1 Standard geometry

Bond lengths and bond angles in the following residue types are not validated in this section: ATP, FMN

The Z score for a bond length (or angle) is the number of standard deviations the observed value is removed from the expected value. A bond length (or angle) with $|Z| > 5$ is considered an outlier worth inspection. RMSZ is the root-mean-square of all Z scores of the bond lengths (or angles).

Mol	Chain	Bond lengths		Bond angles	
		RMSZ	# Z >5	RMSZ	# Z >5
1	A	0.21	0/2866	0.42	0/3872
1	B	0.23	0/2876	0.47	0/3885
All	All	0.22	0/5742	0.44	0/7757

There are no bond length outliers.

There are no bond angle outliers.

There are no chirality outliers.

There are no planarity outliers.

5.2 Too-close contacts

In the following table, the Non-H and H(model) columns list the number of non-hydrogen atoms and hydrogen atoms in the chain respectively. The H(added) column lists the number of hydrogen atoms added and optimized by MolProbity. The Clashes column lists the number of clashes within the asymmetric unit, whereas Symm-Clashes lists symmetry-related clashes.

Mol	Chain	Non-H	H(model)	H(added)	Clashes	Symm-Clashes
1	A	2826	0	2786	80	0
1	B	2836	0	2794	93	0
2	A	31	0	12	8	0
2	B	31	0	12	23	0
3	A	31	0	19	4	0
3	B	31	0	19	3	0
All	All	5786	0	5642	157	0

The all-atom clashscore is defined as the number of clashes found per 1000 atoms (including hydrogen atoms). The all-atom clashscore for this structure is 14.

All (157) close contacts within the same asymmetric unit are listed below, sorted by their clash

magnitude.

Atom-1	Atom-2	Interatomic distance (Å)	Clash overlap (Å)
1:B:358:PHE:CZ	2:B:401:ATP:H2	1.61	1.19
1:B:358:PHE:HZ	2:B:401:ATP:C2	1.70	1.09
1:B:358:PHE:CZ	2:B:401:ATP:C2	2.43	1.05
1:A:332:LEU:HD13	2:A:401:ATP:PA	2.05	0.97
1:B:128:ARG:O	1:B:132:LEU:HD13	1.65	0.96
1:A:358:PHE:HE2	2:A:401:ATP:H2	1.23	0.86
1:A:70:ARG:HG3	3:A:402:FMN:O2P	1.77	0.84
1:A:66:ARG:CZ	3:A:402:FMN:O1P	2.26	0.84
1:B:322:THR:HG22	1:B:324:LYS:H	1.45	0.81
1:A:322:THR:HG22	1:A:324:LYS:H	1.46	0.80
1:B:27:GLU:HG3	1:B:54:ARG:HH12	1.45	0.79
1:A:358:PHE:CE2	2:A:401:ATP:H2	2.03	0.77
1:B:248:LEU:HA	1:B:289:ASN:OD1	1.85	0.75
1:B:65:GLY:HA3	1:B:83:LEU:HD21	1.70	0.73
1:B:358:PHE:CE2	2:B:401:ATP:C2	2.76	0.73
1:B:308:PHE:CZ	2:B:401:ATP:C2	2.77	0.72
1:A:117:ARG:NH1	1:B:117:ARG:HE	1.87	0.72
1:B:308:PHE:HZ	2:B:401:ATP:C2	2.09	0.70
1:B:358:PHE:HZ	2:B:401:ATP:H2	0.99	0.70
1:B:27:GLU:HG3	1:B:54:ARG:NH1	2.07	0.69
1:A:272:ASN:ND2	2:A:401:ATP:O1A	2.23	0.69
1:A:86:TYR:CE1	1:A:92:LEU:HD12	2.29	0.68
1:B:272:ASN:C	2:B:401:ATP:N6	2.52	0.67
1:B:272:ASN:HB3	2:B:401:ATP:C6	2.31	0.66
1:A:86:TYR:HE1	1:A:92:LEU:HD12	1.61	0.66
1:A:346:MET:HE2	1:A:358:PHE:CE1	2.31	0.65
1:B:304:THR:HG23	1:B:353:SER:HB2	1.79	0.65
1:A:358:PHE:HE2	2:A:401:ATP:C2	2.12	0.64
1:B:104:ASN:HD21	1:B:107:ASP:HB2	1.61	0.64
1:B:86:TYR:HE1	1:B:92:LEU:HD12	1.63	0.64
1:B:272:ASN:O	2:B:401:ATP:N6	2.28	0.64
1:A:54:ARG:NH2	3:A:402:FMN:O3P	2.31	0.63
1:B:308:PHE:CE1	1:B:316:LEU:HD21	2.34	0.63
1:B:94:TRP:CD1	1:B:120:THR:HA	2.33	0.62
1:A:60:ASP:OD2	1:A:84:ARG:NH1	2.32	0.62
1:A:203:ILE:HD11	1:B:156:LEU:HD11	1.82	0.62
1:A:60:ASP:HB2	1:A:86:TYR:HE2	1.64	0.62
1:A:159:PRO:HG3	1:B:198:ARG:HH21	1.64	0.62
1:B:308:PHE:CZ	2:B:401:ATP:N3	2.67	0.62
1:A:117:ARG:HH12	1:B:117:ARG:HG3	1.65	0.62
1:A:332:LEU:HD13	2:A:401:ATP:O2A	2.01	0.61

Continued on next page...

Continued from previous page...

Atom-1	Atom-2	Interatomic distance (Å)	Clash overlap (Å)
1:A:330:VAL:HG11	1:B:145:MET:HE1	1.84	0.60
1:A:128:ARG:HH11	1:A:132:LEU:HD22	1.67	0.59
1:A:27:GLU:HG3	1:A:54:ARG:HH12	1.67	0.59
1:A:143:SER:HB3	1:A:334:ILE:HD13	1.83	0.59
1:A:248:LEU:HA	1:A:289:ASN:OD1	2.03	0.58
1:A:117:ARG:HH11	1:B:117:ARG:HE	1.49	0.58
1:A:2:ILE:HG13	1:B:32:TYR:HB2	1.85	0.58
1:B:249:ASP:H	1:B:289:ASN:HD21	1.50	0.58
1:A:255:VAL:HG11	1:A:362:LEU:CB	2.34	0.58
1:B:139:VAL:HG11	1:B:260:VAL:HG11	1.86	0.58
1:B:358:PHE:CE2	2:B:401:ATP:H2	2.12	0.57
1:B:57:GLN:OE1	1:B:66:ARG:NH2	2.38	0.57
1:A:70:ARG:CG	3:A:402:FMN:O2P	2.52	0.57
1:B:332:LEU:HD13	2:B:401:ATP:C5'	2.35	0.56
1:A:255:VAL:HG11	1:A:362:LEU:HB3	1.88	0.56
1:B:132:LEU:HB3	1:B:232:LEU:HD11	1.87	0.56
1:A:317:PHE:CZ	1:A:358:PHE:CE1	2.93	0.56
1:A:346:MET:HE2	1:A:358:PHE:CD1	2.40	0.56
1:A:105:GLU:H	1:A:105:GLU:CD	2.14	0.56
1:A:261:GLN:O	1:A:264:GLN:HG2	2.06	0.55
1:B:313:ILE:HG23	1:B:314:PRO:HD3	1.87	0.55
1:B:313:ILE:CG2	1:B:314:PRO:HD3	2.36	0.55
1:A:317:PHE:CZ	1:A:358:PHE:HE1	2.24	0.55
1:A:115:ILE:HG21	1:B:115:ILE:HG21	1.87	0.55
1:B:255:VAL:HG11	1:B:362:LEU:CB	2.37	0.55
1:B:358:PHE:HE2	2:B:401:ATP:N1	2.05	0.54
1:B:128:ARG:O	1:B:131:GLU:HG2	2.09	0.53
1:A:323:THR:O	1:A:323:THR:HG22	2.08	0.53
1:B:261:GLN:O	1:B:265:VAL:HG13	2.09	0.52
1:A:65:GLY:HA3	1:A:83:LEU:HD21	1.92	0.52
1:A:98:SER:HB2	1:B:117:ARG:NH1	2.25	0.52
1:A:137:VAL:HG22	1:B:137:VAL:HG22	1.91	0.52
1:A:158:GLN:OE1	1:B:198:ARG:NH2	2.43	0.52
1:A:344:GLY:HA3	1:A:361:THR:O	2.10	0.51
1:B:133:GLN:NE2	1:B:133:GLN:HA	2.25	0.51
1:B:308:PHE:CE1	2:B:401:ATP:N3	2.79	0.51
1:A:262:ILE:O	1:A:265:VAL:HG22	2.09	0.51
1:A:257:ALA:HA	1:A:342:HIS:HD2	1.76	0.51
1:B:54:ARG:HH21	3:B:402:FMN:P	2.34	0.51
1:B:133:GLN:HA	1:B:133:GLN:HE21	1.76	0.51
1:B:214:GLU:HB2	1:B:216:GLU:HG2	1.92	0.51

Continued on next page...

Continued from previous page...

Atom-1	Atom-2	Interatomic distance (Å)	Clash overlap (Å)
1:B:323:THR:HG22	1:B:323:THR:O	2.10	0.51
1:B:53:CYS:HA	1:B:55:PHE:CE1	2.47	0.50
1:B:358:PHE:CE2	2:B:401:ATP:N1	2.78	0.50
1:A:191:ARG:O	1:A:194:GLU:HG2	2.11	0.49
1:B:94:TRP:HD1	1:B:120:THR:HA	1.73	0.49
1:A:77:ARG:HB3	1:A:77:ARG:NH1	2.27	0.49
1:A:261:GLN:O	1:A:265:VAL:HG13	2.12	0.49
1:B:132:LEU:O	1:B:135:GLU:HG2	2.13	0.49
1:B:262:ILE:O	1:B:265:VAL:HG22	2.13	0.49
1:B:128:ARG:O	1:B:132:LEU:CD1	2.49	0.48
1:A:210:VAL:HG11	1:B:148:MET:HE1	1.94	0.48
1:B:136:LEU:HA	1:B:139:VAL:HG22	1.95	0.48
1:B:255:VAL:HG12	1:B:256:LEU:N	2.29	0.48
1:B:255:VAL:HG11	1:B:362:LEU:HB3	1.95	0.48
1:B:272:ASN:C	2:B:401:ATP:HN61	2.11	0.48
1:B:131:GLU:CG	1:B:132:LEU:HD12	2.44	0.48
1:B:332:LEU:HD13	2:B:401:ATP:H5'2	1.95	0.48
1:A:243:GLN:NE2	1:A:284:GLU:HG2	2.29	0.48
1:B:191:ARG:O	1:B:194:GLU:HG2	2.13	0.48
1:A:67:ALA:HA	1:A:70:ARG:NH1	2.29	0.47
1:B:272:ASN:HB3	2:B:401:ATP:N6	2.28	0.47
1:A:255:VAL:HG12	1:A:256:LEU:N	2.29	0.47
1:A:317:PHE:CE1	1:A:358:PHE:HE1	2.33	0.47
1:A:66:ARG:HH11	1:A:70:ARG:HH21	1.63	0.47
1:B:344:GLY:HA3	1:B:361:THR:O	2.15	0.47
1:B:316:LEU:HB3	1:B:332:LEU:HD23	1.97	0.46
1:B:206:LEU:O	1:B:210:VAL:HG22	2.16	0.46
1:B:322:THR:HA	2:B:401:ATP:O3'	2.16	0.46
1:B:255:VAL:HG11	1:B:362:LEU:HB2	1.98	0.46
1:A:98:SER:O	1:A:114:GLY:HA2	2.16	0.45
1:A:59:GLU:HA	1:A:61:HIS:CE1	2.51	0.45
1:B:66:ARG:HH11	3:B:402:FMN:P	2.39	0.45
1:A:14:SER:HB2	1:B:113:ILE:HD13	1.98	0.45
1:B:66:ARG:NH1	3:B:402:FMN:O3P	2.49	0.45
1:A:348:ALA:HB2	1:A:358:PHE:CZ	2.51	0.45
1:B:83:LEU:HD23	1:B:83:LEU:HA	1.85	0.45
1:B:20:VAL:HB	1:B:32:TYR:HB3	1.98	0.44
1:A:332:LEU:CD1	2:A:401:ATP:PA	2.93	0.44
1:B:322:THR:HG21	1:B:327:GLY:HA3	2.00	0.44
1:A:240:GLN:O	1:A:283:ARG:HD2	2.18	0.44
1:B:262:ILE:HA	1:B:265:VAL:HG22	2.00	0.43

Continued on next page...

Continued from previous page...

Atom-1	Atom-2	Interatomic distance (Å)	Clash overlap (Å)
1:B:308:PHE:HZ	2:B:401:ATP:H2	1.62	0.43
1:B:332:LEU:HD22	2:B:401:ATP:H5'2	2.00	0.43
1:A:136:LEU:HD13	1:A:263:GLN:HG2	1.99	0.43
1:A:64:PRO:O	1:A:68:ILE:HG22	2.19	0.43
1:A:2:ILE:HG23	1:A:6:LEU:HD23	2.00	0.43
1:A:135:GLU:O	1:A:139:VAL:HG23	2.19	0.43
1:B:133:GLN:NE2	1:B:232:LEU:HD22	2.34	0.43
1:B:249:ASP:H	1:B:289:ASN:ND2	2.15	0.43
1:B:332:LEU:HD13	2:B:401:ATP:PA	2.59	0.42
1:A:97:LEU:HD21	1:A:99:ILE:HD11	2.02	0.42
1:A:255:VAL:HG11	1:A:362:LEU:HB2	1.99	0.42
1:B:257:ALA:HA	1:B:342:HIS:HD2	1.84	0.42
1:A:340:GLU:HA	1:A:344:GLY:O	2.20	0.42
1:B:131:GLU:HG3	1:B:132:LEU:HD12	2.01	0.42
1:A:12:GLU:O	1:A:35:PRO:HD2	2.20	0.42
1:A:37:PHE:HE1	1:A:116:GLN:HE22	1.66	0.42
1:A:294:ASP:O	1:A:296:MET:HG2	2.19	0.42
1:A:243:GLN:HE21	1:A:284:GLU:HG2	1.83	0.42
1:A:317:PHE:HZ	1:A:358:PHE:CE1	2.37	0.42
1:A:46:ASP:N	1:A:46:ASP:OD1	2.53	0.41
1:A:145:MET:HG3	1:B:328:MET:HE2	2.02	0.41
1:A:247:SER:O	1:A:288:THR:HA	2.19	0.41
1:A:152:LEU:HD13	1:B:152:LEU:HD23	2.02	0.41
1:A:83:LEU:HD23	1:A:83:LEU:HA	1.81	0.41
1:A:117:ARG:HH21	1:B:98:SER:CB	2.34	0.41
1:B:287:VAL:HA	1:B:300:GLU:O	2.21	0.41
1:B:101:PRO:HB3	1:B:112:TYR:CD1	2.56	0.41
1:A:158:GLN:HB3	1:A:159:PRO:HD3	2.03	0.41
1:B:94:TRP:CE3	1:B:123:GLN:HG2	2.56	0.41
1:A:358:PHE:CE2	2:A:401:ATP:C2	2.95	0.41
1:A:66:ARG:NH1	1:A:70:ARG:HH21	2.19	0.40
1:A:309:GLN:HB2	1:A:312:VAL:HG23	2.02	0.40
1:B:46:ASP:N	1:B:46:ASP:OD1	2.53	0.40
1:B:240:GLN:HB3	1:B:283:ARG:CZ	2.51	0.40

There are no symmetry-related clashes.

5.3 Torsion angles [i](#)

5.3.1 Protein backbone [i](#)

In the following table, the Percentiles column shows the percent Ramachandran outliers of the chain as a percentile score with respect to all X-ray entries followed by that with respect to entries of similar resolution.

The Analysed column shows the number of residues for which the backbone conformation was analysed, and the total number of residues.

Mol	Chain	Analysed	Favoured	Allowed	Outliers	Percentiles	
1	A	361/388 (93%)	356 (99%)	5 (1%)	0	100	100
1	B	363/388 (94%)	360 (99%)	3 (1%)	0	100	100
All	All	724/776 (93%)	716 (99%)	8 (1%)	0	100	100

There are no Ramachandran outliers to report.

5.3.2 Protein sidechains [i](#)

In the following table, the Percentiles column shows the percent sidechain outliers of the chain as a percentile score with respect to all X-ray entries followed by that with respect to entries of similar resolution.

The Analysed column shows the number of residues for which the sidechain conformation was analysed, and the total number of residues.

Mol	Chain	Analysed	Rotameric	Outliers	Percentiles	
1	A	301/321 (94%)	293 (97%)	8 (3%)	39	68
1	B	302/321 (94%)	287 (95%)	15 (5%)	22	46
All	All	603/642 (94%)	580 (96%)	23 (4%)	29	56

All (23) residues with a non-rotameric sidechain are listed below:

Mol	Chain	Res	Type
1	A	46	ASP
1	A	53	CYS
1	A	105	GLU
1	A	121	GLU
1	A	155	GLU
1	A	156	LEU
1	A	301	VAL
1	A	328	MET

Continued on next page...

Continued from previous page...

Mol	Chain	Res	Type
1	B	0	HIS
1	B	23	GLN
1	B	53	CYS
1	B	54	ARG
1	B	55	PHE
1	B	59	GLU
1	B	70	ARG
1	B	79	CYS
1	B	97	LEU
1	B	104	ASN
1	B	120	THR
1	B	133	GLN
1	B	155	GLU
1	B	214	GLU
1	B	283	ARG

Sometimes sidechains can be flipped to improve hydrogen bonding and reduce clashes. All (9) such sidechains are listed below:

Mol	Chain	Res	Type
1	A	116	GLN
1	A	243	GLN
1	A	268	ASN
1	A	279	GLN
1	B	13	HIS
1	B	263	GLN
1	B	268	ASN
1	B	279	GLN
1	B	281	GLN

5.3.3 RNA [i](#)

There are no RNA molecules in this entry.

5.4 Non-standard residues in protein, DNA, RNA chains [i](#)

There are no non-standard protein/DNA/RNA residues in this entry.

5.5 Carbohydrates [i](#)

There are no oligosaccharides in this entry.

5.6 Ligand geometry

4 ligands are modelled in this entry.

In the following table, the Counts columns list the number of bonds (or angles) for which Mogul statistics could be retrieved, the number of bonds (or angles) that are observed in the model and the number of bonds (or angles) that are defined in the Chemical Component Dictionary. The Link column lists molecule types, if any, to which the group is linked. The Z score for a bond length (or angle) is the number of standard deviations the observed value is removed from the expected value. A bond length (or angle) with $|Z| > 2$ is considered an outlier worth inspection. RMSZ is the root-mean-square of all Z scores of the bond lengths (or angles).

Mol	Type	Chain	Res	Link	Bond lengths			Bond angles		
					Counts	RMSZ	# Z > 2	Counts	RMSZ	# Z > 2
3	FMN	B	402	-	33,33,33	0.76	0	48,50,50	0.71	1 (2%)
2	ATP	A	401	-	32,33,33	0.56	0	48,52,52	0.99	2 (4%)
2	ATP	B	401	-	32,33,33	0.63	0	48,52,52	0.86	1 (2%)
3	FMN	A	402	-	33,33,33	0.62	0	48,50,50	0.67	1 (2%)

In the following table, the Chirals column lists the number of chiral outliers, the number of chiral centers analysed, the number of these observed in the model and the number defined in the Chemical Component Dictionary. Similar counts are reported in the Torsion and Rings columns. '-' means no outliers of that kind were identified.

Mol	Type	Chain	Res	Link	Chirals	Torsions	Rings
3	FMN	B	402	-	-	0/18/18/18	0/3/3/3
2	ATP	A	401	-	-	5/22/38/38	0/3/3/3
2	ATP	B	401	-	-	4/22/38/38	0/3/3/3
3	FMN	A	402	-	-	3/18/18/18	0/3/3/3

There are no bond length outliers.

All (5) bond angle outliers are listed below:

Mol	Chain	Res	Type	Atoms	Z	Observed(°)	Ideal(°)
2	A	401	ATP	N3-C2-N1	3.63	134.07	128.58
2	B	401	ATP	N3-C2-N1	3.36	133.67	128.58
3	A	402	FMN	C4-N3-C2	-2.12	121.88	125.64
3	B	402	FMN	C4-N3-C2	-2.05	122.00	125.64
2	A	401	ATP	C2-N3-C4	-2.03	106.88	111.83

There are no chirality outliers.

All (12) torsion outliers are listed below:

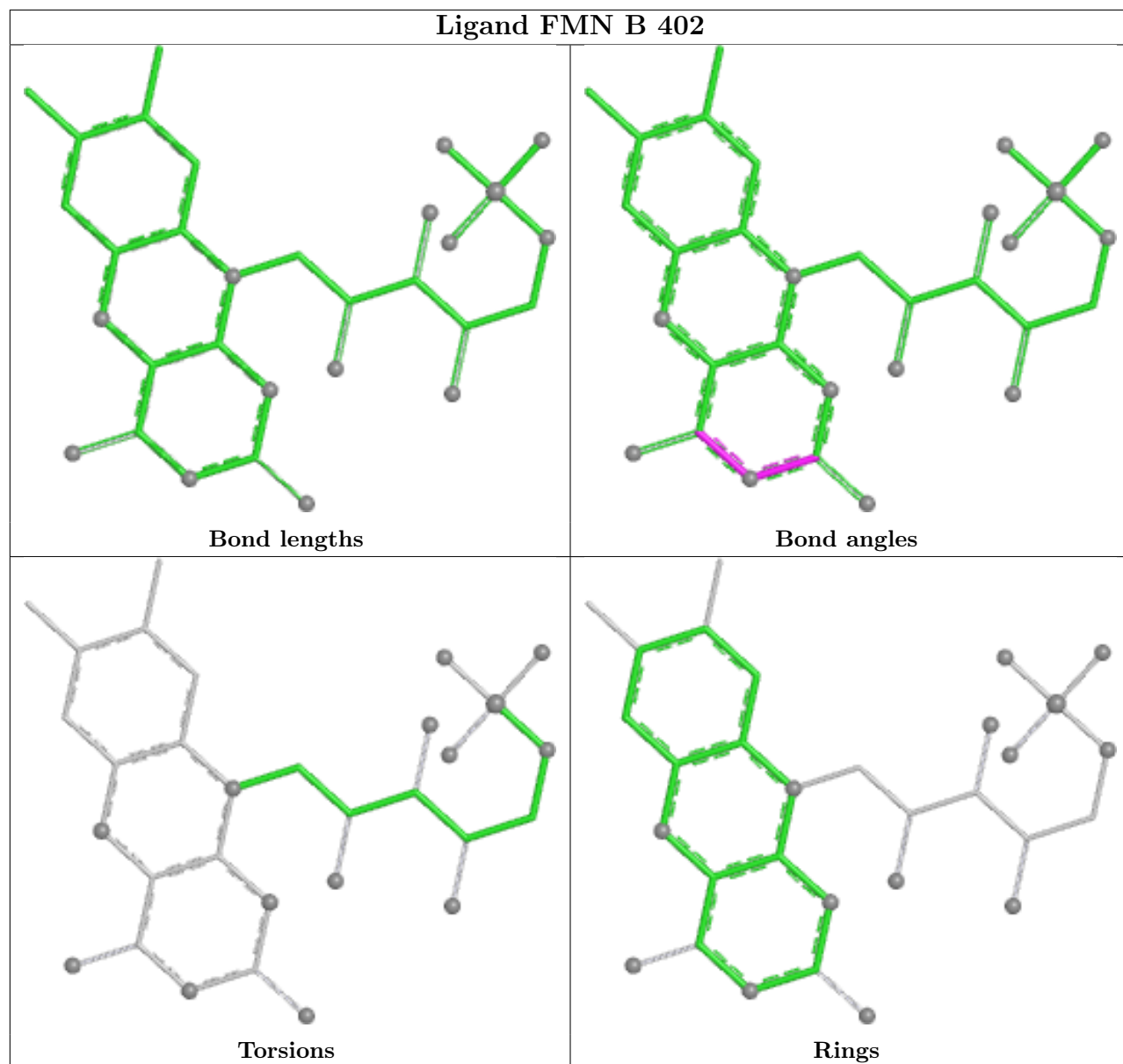
Mol	Chain	Res	Type	Atoms
2	B	401	ATP	PB-O3A-PA-O5'
3	A	402	FMN	C5'-O5'-P-O2P
3	A	402	FMN	C5'-O5'-P-O3P
2	B	401	ATP	C2'-C1'-N9-C4
2	B	401	ATP	C2'-C1'-N9-C8
2	B	401	ATP	O4'-C4'-C5'-O5'
3	A	402	FMN	C5'-O5'-P-O1P
2	A	401	ATP	PB-O3A-PA-O5'
2	A	401	ATP	C2'-C1'-N9-C8
2	A	401	ATP	C2'-C1'-N9-C4
2	A	401	ATP	O4'-C1'-N9-C4
2	A	401	ATP	O4'-C1'-N9-C8

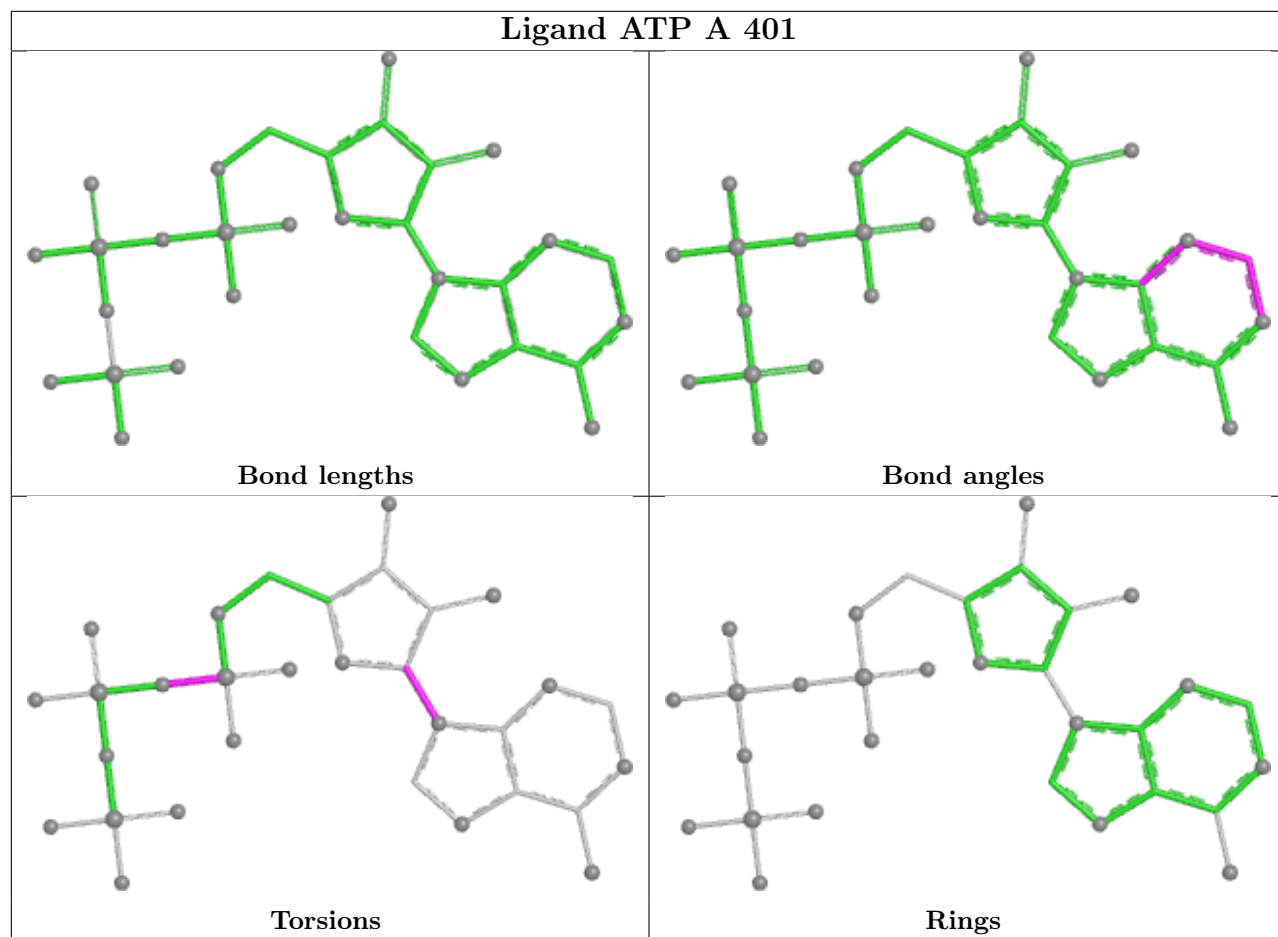
There are no ring outliers.

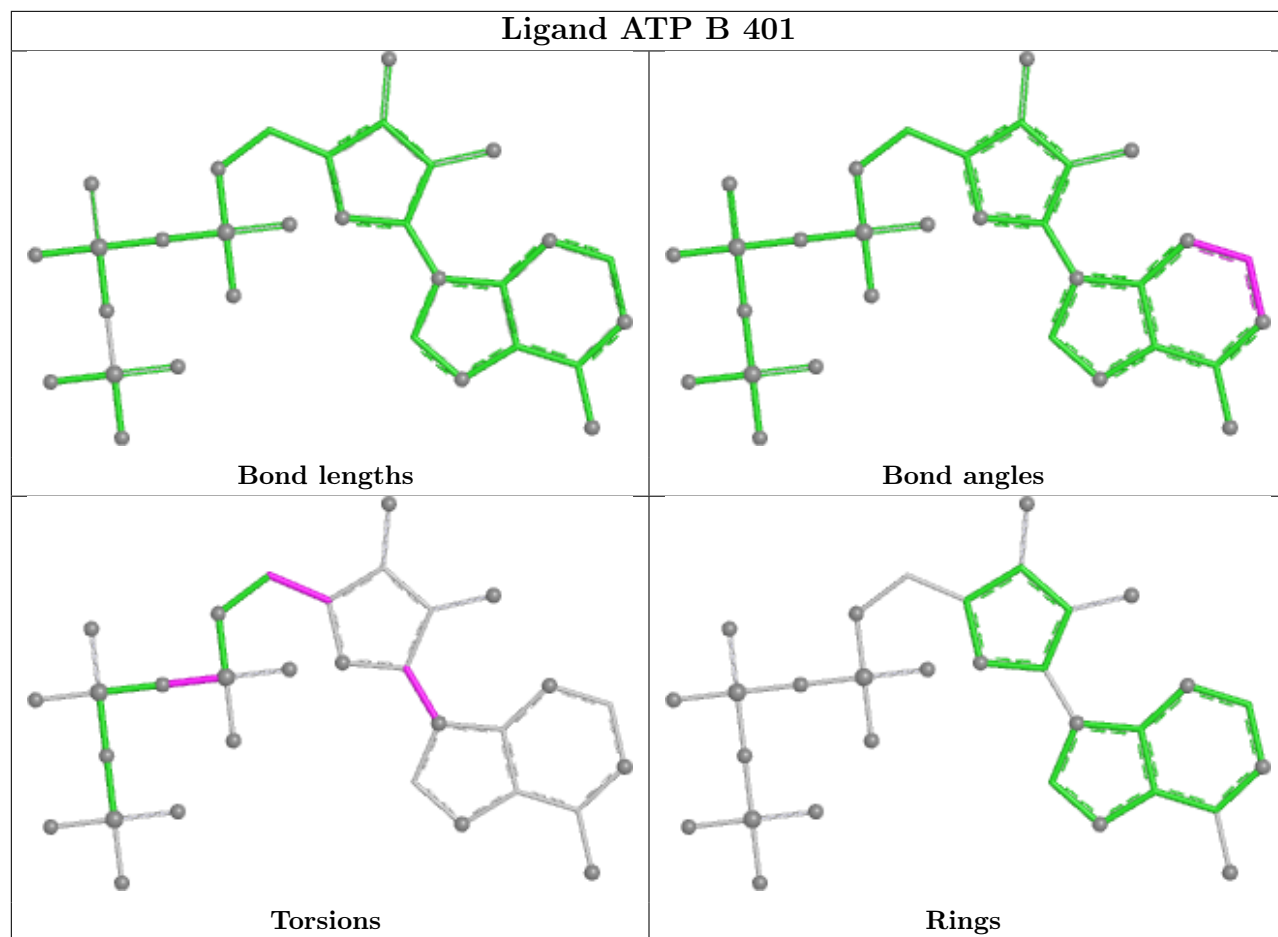
4 monomers are involved in 38 short contacts:

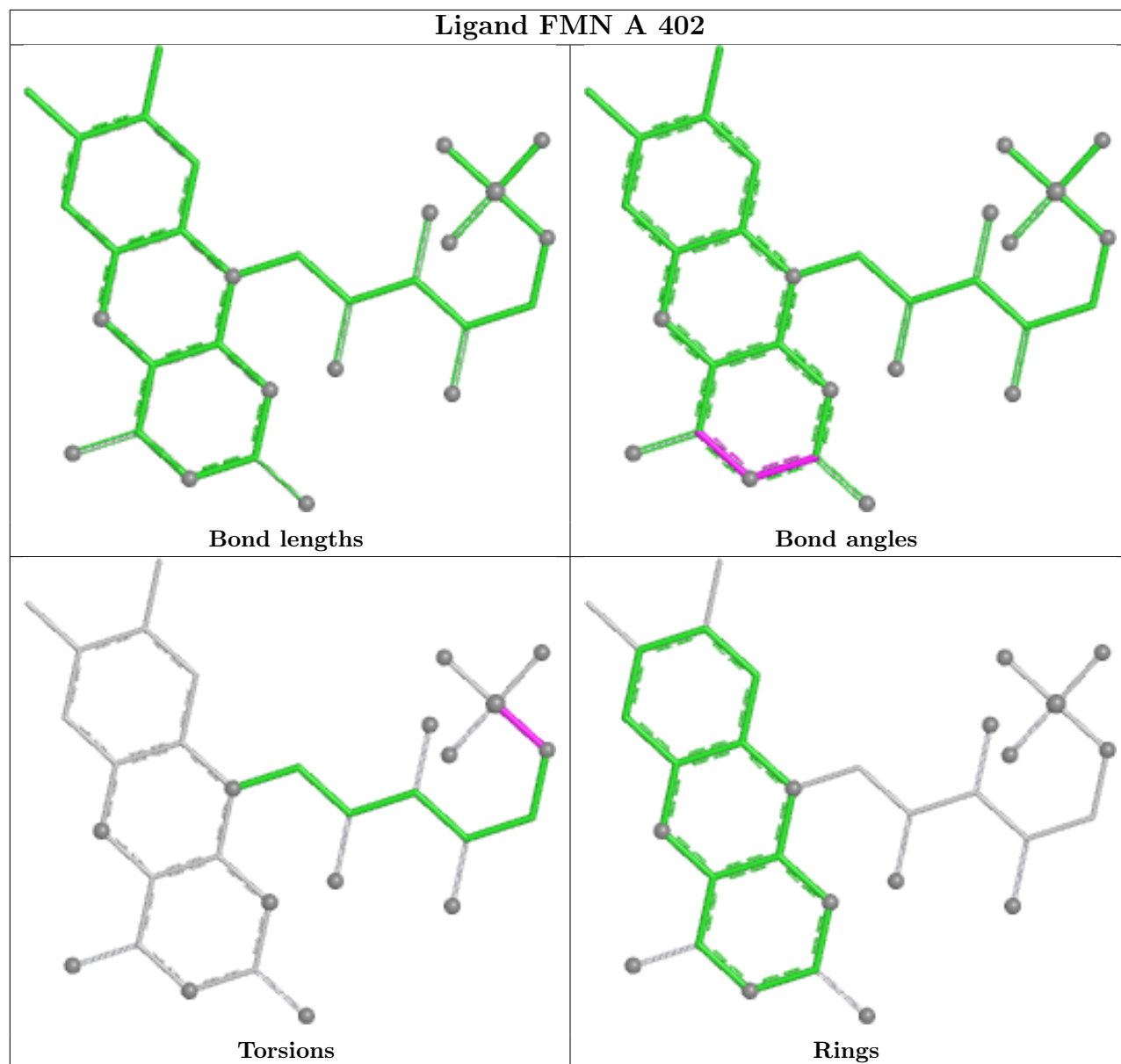
Mol	Chain	Res	Type	Clashes	Symm-Clashes
3	B	402	FMN	3	0
2	A	401	ATP	8	0
2	B	401	ATP	23	0
3	A	402	FMN	4	0

The following is a two-dimensional graphical depiction of Mogul quality analysis of bond lengths, bond angles, torsion angles, and ring geometry for all instances of the Ligand of Interest. In addition, ligands with molecular weight > 250 and outliers as shown on the validation Tables will also be included. For torsion angles, if less than 5% of the Mogul distribution of torsion angles is within 10 degrees of the torsion angle in question, then that torsion angle is considered an outlier. Any bond that is central to one or more torsion angles identified as an outlier by Mogul will be highlighted in the graph. For rings, the root-mean-square deviation (RMSD) between the ring in question and similar rings identified by Mogul is calculated over all ring torsion angles. If the average RMSD is greater than 60 degrees and the minimal RMSD between the ring in question and any Mogul-identified rings is also greater than 60 degrees, then that ring is considered an outlier. The outliers are highlighted in purple. The color gray indicates Mogul did not find sufficient equivalents in the CSD to analyse the geometry.









5.7 Other polymers [i](#)

There are no such residues in this entry.

5.8 Polymer linkage issues [i](#)

There are no chain breaks in this entry.

6 Fit of model and data [i](#)

6.1 Protein, DNA and RNA chains [i](#)

In the following table, the column labelled ‘#RSRZ > 2’ contains the number (and percentage) of RSRZ outliers, followed by percent RSRZ outliers for the chain as percentile scores relative to all X-ray entries and entries of similar resolution. The OWAB column contains the minimum, median, 95th percentile and maximum values of the occupancy-weighted average B-factor per residue. The column labelled ‘Q < 0.9’ lists the number of (and percentage) of residues with an average occupancy less than 0.9.

Mol	Chain	Analysed	<RSRZ>	#RSRZ>2	OWAB(Å ²)	Q<0.9
1	A	363/388 (93%)	-0.02	4 (1%) 78 76	25, 106, 205, 245	15 (4%)
1	B	365/388 (94%)	0.08	6 (1%) 70 68	24, 113, 235, 301	11 (3%)
All	All	728/776 (93%)	0.03	10 (1%) 73 71	24, 109, 224, 301	26 (3%)

All (10) RSRZ outliers are listed below:

Mol	Chain	Res	Type	RSRZ
1	A	316	LEU	3.5
1	B	263	GLN	3.0
1	B	360	PHE	2.9
1	B	316	LEU	2.4
1	A	358	PHE	2.2
1	B	231	ALA	2.1
1	B	257	ALA	2.1
1	A	338	ILE	2.0
1	B	264	GLN	2.0
1	A	262	ILE	2.0

6.2 Non-standard residues in protein, DNA, RNA chains [i](#)

There are no non-standard protein/DNA/RNA residues in this entry.

6.3 Carbohydrates [i](#)

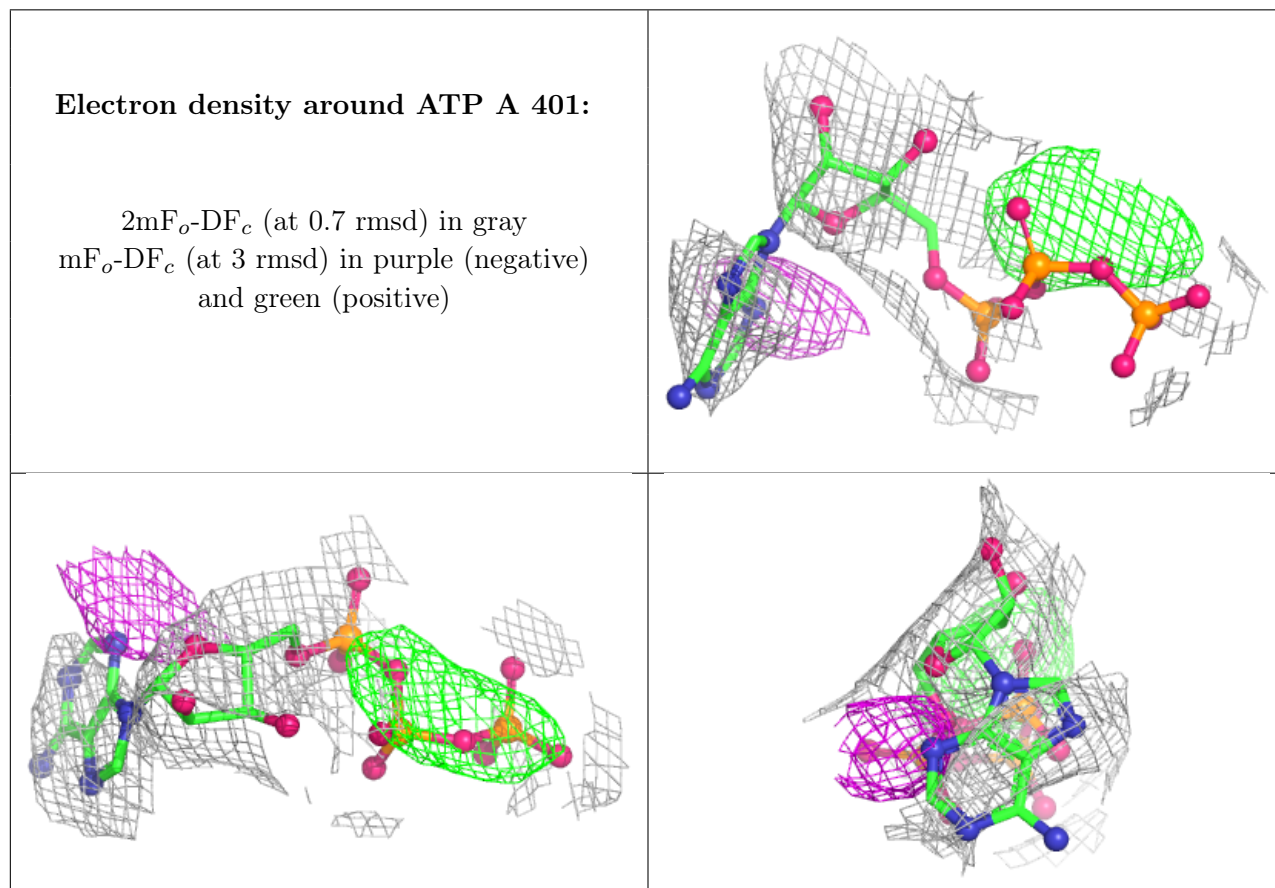
There are no oligosaccharides in this entry.

6.4 Ligands [i](#)

In the following table, the Atoms column lists the number of modelled atoms in the group and the number defined in the chemical component dictionary. The B-factors column lists the minimum, median, 95th percentile and maximum values of B factors of atoms in the group. The column labelled 'Q < 0.9' lists the number of atoms with occupancy less than 0.9.

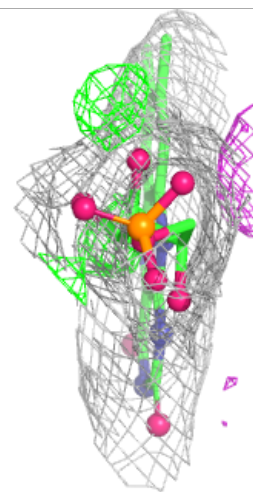
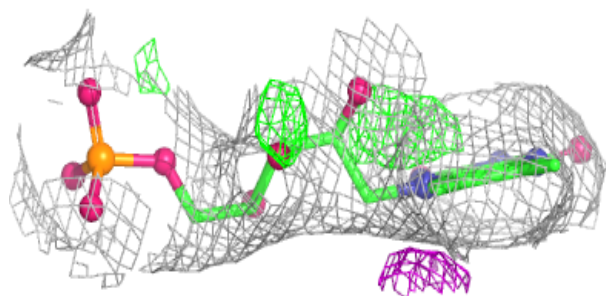
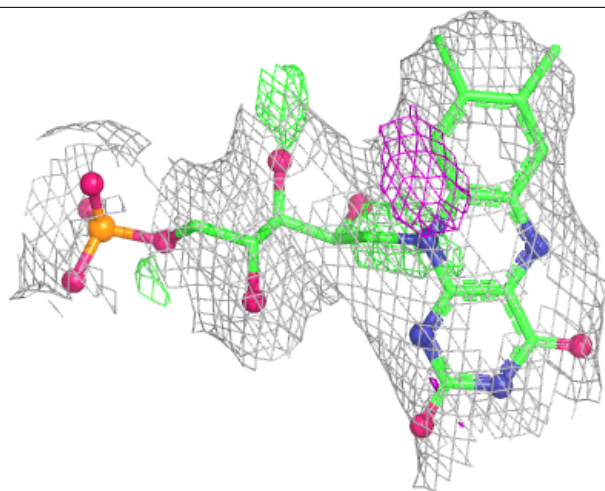
Mol	Type	Chain	Res	Atoms	RSCC	RSR	B-factors(Å ²)	Q<0.9
2	ATP	A	401	31/31	0.92	0.10	121,143,176,182	0
3	FMN	A	402	31/31	0.93	0.09	60,64,95,110	0
3	FMN	B	402	31/31	0.94	0.07	53,75,99,106	0
2	ATP	B	401	31/31	0.96	0.07	115,151,204,215	0

The following is a graphical depiction of the model fit to experimental electron density of all instances of the Ligand of Interest. In addition, ligands with molecular weight > 250 and outliers as shown on the geometry validation Tables will also be included. Each fit is shown from different orientation to approximate a three-dimensional view.



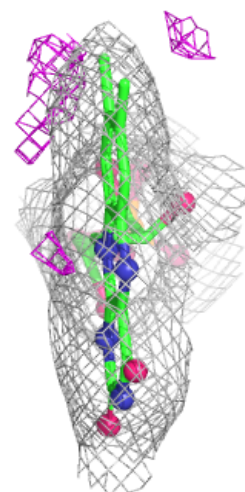
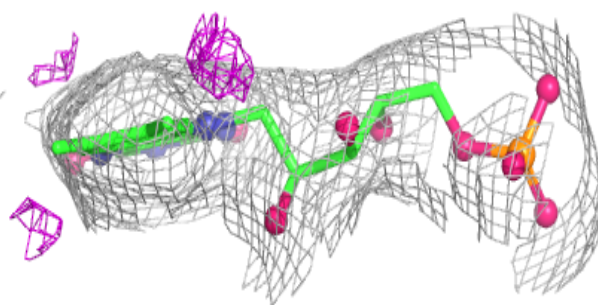
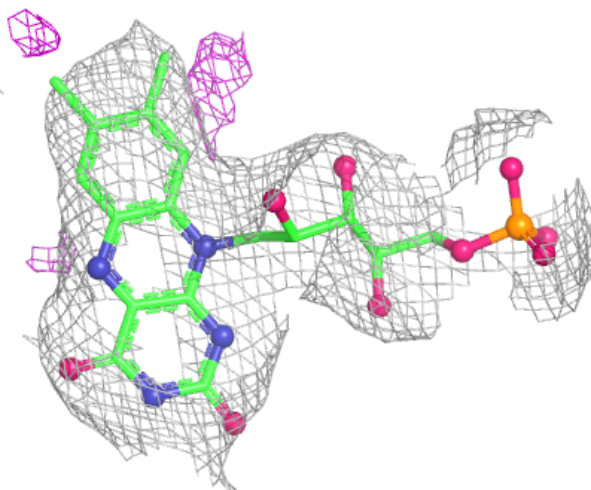
Electron density around FMN A 402:

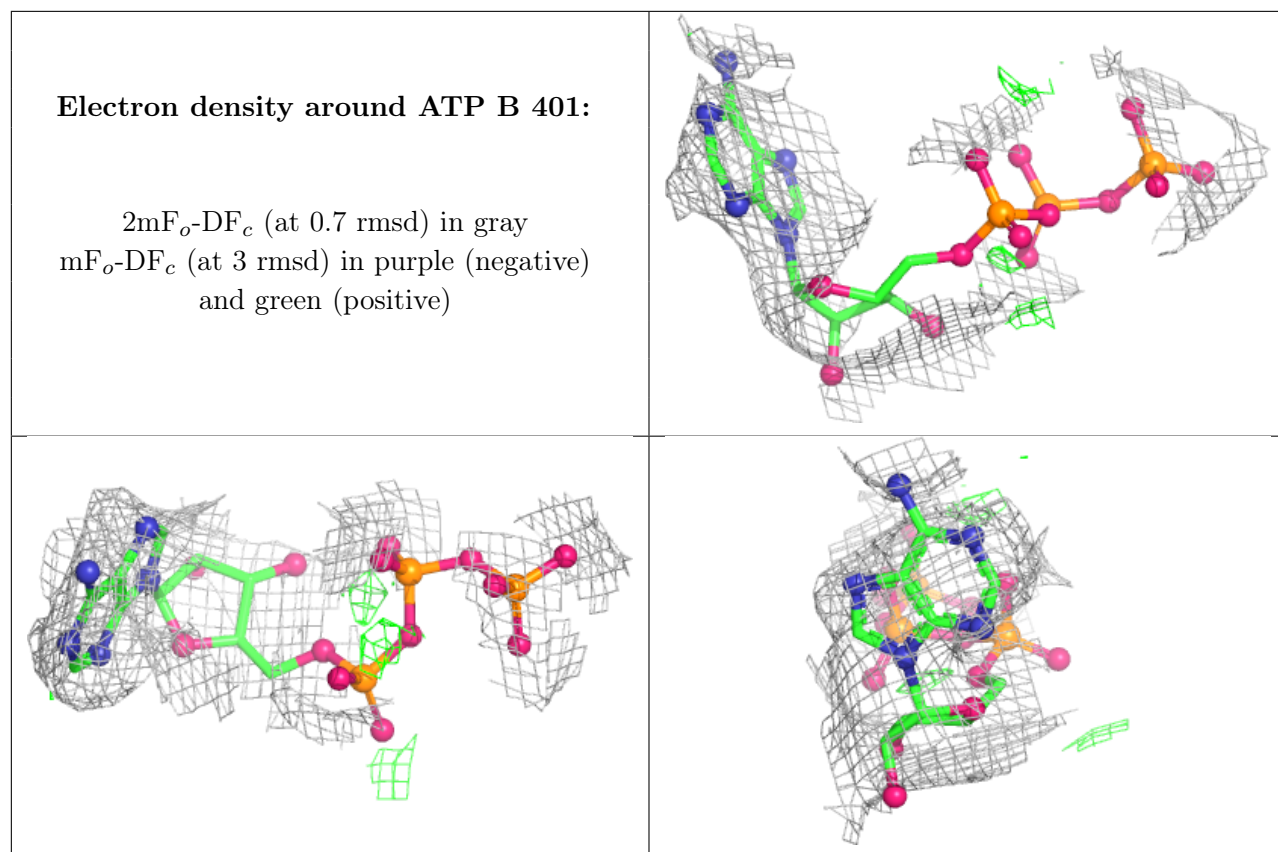
$2mF_o-DF_c$ (at 0.7 rmsd) in gray
 mF_o-DF_c (at 3 rmsd) in purple (negative)
and green (positive)



Electron density around FMN B 402:

$2mF_o-DF_c$ (at 0.7 rmsd) in gray
 mF_o-DF_c (at 3 rmsd) in purple (negative)
and green (positive)





6.5 Other polymers [i](#)

There are no such residues in this entry.