



# wwPDB X-ray Structure Validation Summary Report ⓘ

Mar 10, 2026 – 12:25 PM UTC

PDB ID : 6AAY / pdb\_00006aay  
Title : the Cas13b binary complex  
Authors : Bo, Z.; Weiwei, Y.; Yangmiao, Y.; Ouyang, S.Y.  
Deposited on : 2018-07-19  
Resolution : 2.79 Å(reported)

This is a wwPDB X-ray Structure Validation Summary Report for a publicly released PDB entry.

We welcome your comments at [validation@mail.wwpdb.org](mailto:validation@mail.wwpdb.org)

A user guide is available at

<https://www.wwpdb.org/validation/2017/XrayValidationReportHelp>

with specific help available everywhere you see the ⓘ symbol.

The types of validation reports are described at

<http://www.wwpdb.org/validation/2017/FAQs#types>.

---

The following versions of software and data (see [references ⓘ](#)) were used in the production of this report:

MolProbity : 4-5-2 with Phenix2.0  
Mogul : 2022.3.0, CSD as543be (2022)  
Xtriage (Phenix) : 2.0  
EDS : 3.0  
Percentile statistics : 20250101.v01 (using entries in the PDB archive January 1st 2025)  
CCP4 : 9.0.010 (Gargrove)  
Density-Fitness : 1.0.12  
Ideal geometry (proteins) : Engh & Huber (2001)  
Ideal geometry (DNA, RNA) : Parkinson et al. (1996)  
Validation Pipeline (wwPDB-VP) : 2.49

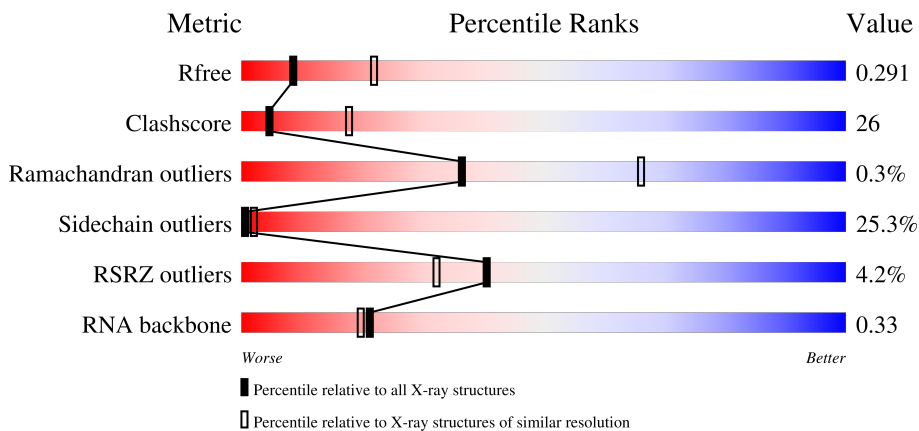
# 1 Overall quality at a glance

The following experimental techniques were used to determine the structure:

*X-RAY DIFFRACTION*

The reported resolution of this entry is 2.79 Å.

Percentile scores (ranging between 0-100) for global validation metrics of the entry are shown in the following graphic. The table shows the number of entries on which the scores are based.



Metric	Whole archive (#Entries)	Similar resolution (#Entries, resolution range(Å))
$R_{free}$	180053	3866 (2.80-2.80)
Clashscore	190562	4276 (2.80-2.80)
Ramachandran outliers	187476	4196 (2.80-2.80)
Sidechain outliers	187428	4198 (2.80-2.80)
RSRZ outliers	180081	3869 (2.80-2.80)
RNA backbone	3983	1114 (3.00-2.60)

The table below summarises the geometric issues observed across the polymeric chains and their fit to the electron density. The red, orange, yellow and green segments of the lower bar indicate the fraction of residues that contain outliers for  $\geq 3$ , 2, 1 and 0 types of geometric quality criteria respectively. A grey segment represents the fraction of residues that are not modelled. The numeric value for each fraction is indicated below the corresponding segment, with a dot representing fractions  $\leq 5\%$ . The upper red bar (where present) indicates the fraction of residues that have poor fit to the electron density. The numeric value is given above the bar.

Mol	Chain	Length	Quality of chain
1	A	1232	 4% 49% 35% 13% ••
2	B	59	 5% 37% 32% 19% 12%

## 2 Entry composition [i](#)

There are 3 unique types of molecules in this entry. The entry contains 11262 atoms, of which 0 are hydrogens and 0 are deuteriums.

In the tables below, the ZeroOcc column contains the number of atoms modelled with zero occupancy, the AltConf column contains the number of residues with at least one atom in alternate conformation and the Trace column contains the number of residues modelled with at most 2 atoms.

- Molecule 1 is a protein called *Bergeyella zoohelcum* Cas13b (R1177A) mutant.

Mol	Chain	Residues	Atoms						ZeroOcc	AltConf	Trace
			Total	C	N	O	S	Se			
1	A	1199	10107	6494	1706	1888	7	12	0	0	0

There are 10 discrepancies between the modelled and reference sequences:

Chain	Residue	Modelled	Actual	Comment	Reference
A	1	MSE	-	initiating methionine	UNP K1LVU1
A	1177	ALA	ARG	engineered mutation	UNP K1LVU1
A	1225	LEU	-	expression tag	UNP K1LVU1
A	1226	GLU	-	expression tag	UNP K1LVU1
A	1227	HIS	-	expression tag	UNP K1LVU1
A	1228	HIS	-	expression tag	UNP K1LVU1
A	1229	HIS	-	expression tag	UNP K1LVU1
A	1230	HIS	-	expression tag	UNP K1LVU1
A	1231	HIS	-	expression tag	UNP K1LVU1
A	1232	HIS	-	expression tag	UNP K1LVU1

- Molecule 2 is a RNA chain called RNA (52-MER).

Mol	Chain	Residues	Atoms					ZeroOcc	AltConf	Trace
			Total	C	N	O	P			
2	B	52	1118	501	210	355	52	0	0	0

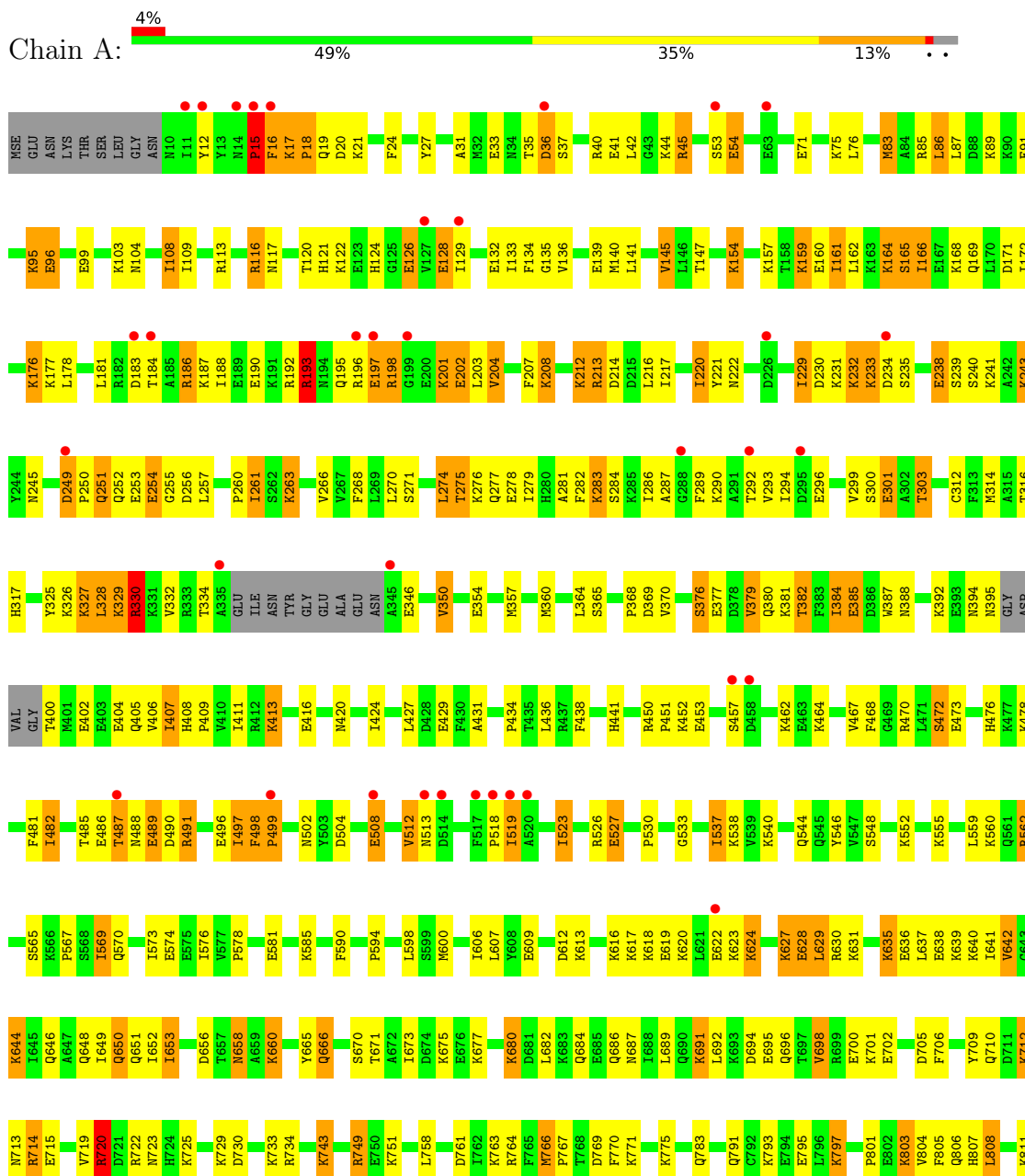
- Molecule 3 is water.

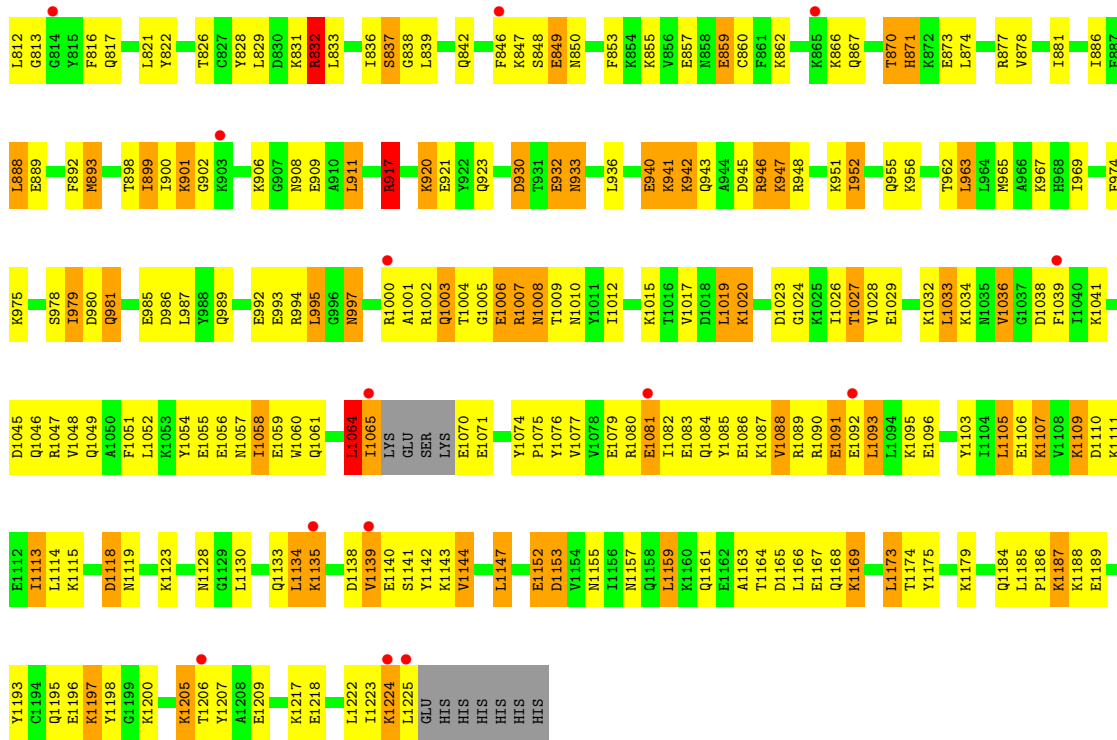
Mol	Chain	Residues	Atoms		ZeroOcc	AltConf
3	A	36	Total	O	0	0
			36	36		
3	B	1	Total	O	0	0
			1	1		

### 3 Residue-property plots [i](#)

These plots are drawn for all protein, RNA, DNA and oligosaccharide chains in the entry. The first graphic for a chain summarises the proportions of the various outlier classes displayed in the second graphic. The second graphic shows the sequence view annotated by issues in geometry and electron density. Residues are color-coded according to the number of geometric quality criteria for which they contain at least one outlier: green = 0, yellow = 1, orange = 2 and red = 3 or more. A red dot above a residue indicates a poor fit to the electron density ( $RSRZ > 2$ ). Stretches of 2 or more consecutive residues without any outlier are shown as a green connector. Residues present in the sample, but not in the model, are shown in grey.

- Molecule 1: *Bergeyella zoohelcum* Cas13b (R1177A) mutant





## 4 Data and refinement statistics

Property	Value	Source
Space group	P 41 21 2	Depositor
Cell constants a, b, c, $\alpha$ , $\beta$ , $\gamma$	196.74Å 196.74Å 96.23Å 90.00° 90.00° 90.00°	Depositor
Resolution (Å)	65.02 – 2.79 65.02 – 2.79	Depositor EDS
% Data completeness (in resolution range)	99.9 (65.02-2.79) 99.9 (65.02-2.79)	Depositor EDS
$R_{merge}$	(Not available)	Depositor
$R_{sym}$	(Not available)	Depositor
$\langle I/\sigma(I) \rangle$ <sup>1</sup>	1.82 (at 2.77Å)	Xtrriage
Refinement program	REFMAC 5.8.0222	Depositor
R, $R_{free}$	0.221 , 0.276 0.232 , 0.291	Depositor DCC
$R_{free}$ test set	2390 reflections (5.04%)	wwPDB-VP
Wilson B-factor (Å <sup>2</sup> )	72.3	Xtrriage
Anisotropy	0.096	Xtrriage
Bulk solvent $k_{sol}$ (e/Å <sup>3</sup> ), $B_{sol}$ (Å <sup>2</sup> )	0.34 , 52.5	EDS
L-test for twinning <sup>2</sup>	$\langle  L  \rangle = 0.50$ , $\langle L^2 \rangle = 0.33$	Xtrriage
Estimated twinning fraction	No twinning to report.	Xtrriage
$F_o, F_c$ correlation	0.93	EDS
Total number of atoms	11262	wwPDB-VP
Average B, all atoms (Å <sup>2</sup> )	72.0	wwPDB-VP

Xtrriage's analysis on translational NCS is as follows: *The largest off-origin peak in the Patterson function is 2.84% of the height of the origin peak. No significant pseudotranslation is detected.*

<sup>1</sup>Intensities estimated from amplitudes.

<sup>2</sup>Theoretical values of  $\langle |L| \rangle$ ,  $\langle L^2 \rangle$  for acentric reflections are 0.5, 0.333 respectively for untwinned datasets, and 0.375, 0.2 for perfectly twinned datasets.

## 5 Model quality i

### 5.1 Standard geometry i

The Z score for a bond length (or angle) is the number of standard deviations the observed value is removed from the expected value. A bond length (or angle) with  $|Z| > 5$  is considered an outlier worth inspection. RMSZ is the root-mean-square of all Z scores of the bond lengths (or angles).

Mol	Chain	Bond lengths		Bond angles	
		RMSZ	# Z  >5	RMSZ	# Z  >5
1	A	0.97	3/10294 (0.0%)	1.32	22/13778 (0.2%)
2	B	0.73	2/1253 (0.2%)	0.92	2/1949 (0.1%)
All	All	0.95	5/11547 (0.0%)	1.28	24/15727 (0.2%)

Chiral center outliers are detected by calculating the chiral volume of a chiral center and verifying if the center is modelled as a planar moiety or with the opposite hand. A planarity outlier is detected by checking planarity of atoms in a peptide group, atoms in a mainchain group or atoms of a sidechain that are expected to be planar.

Mol	Chain	#Chirality outliers	#Planarity outliers
1	A	0	23

All (5) bond length outliers are listed below:

Mol	Chain	Res	Type	Atoms	Z	Observed(Å)	Ideal(Å)
2	B	22	A	O3'-P	-5.89	1.52	1.61
2	B	23	G	O3'-P	-5.74	1.52	1.61
1	A	766	MSE	CA-C	-5.23	1.47	1.53
1	A	594	PRO	C-O	-5.11	1.18	1.23
1	A	518	PRO	C-O	-5.03	1.17	1.23

The worst 5 of 24 bond angle outliers are listed below:

Mol	Chain	Res	Type	Atoms	Z	Observed(°)	Ideal(°)
1	A	15	PRO	N-CA-CB	-12.91	89.69	103.25
1	A	499	PRO	CA-N-CD	-11.64	95.70	112.00
1	A	499	PRO	CB-CA-C	8.06	124.86	111.56
1	A	498	PHE	CB-CA-C	7.99	125.91	110.17
1	A	658	ASN	N-CA-C	-7.41	104.24	113.28

There are no chirality outliers.

5 of 23 planarity outliers are listed below:

Mol	Chain	Res	Type	Group
1	A	186	ARG	Sidechain
1	A	193	ARG	Sidechain
1	A	196	ARG	Sidechain
1	A	45	ARG	Sidechain
1	A	85	ARG	Sidechain

## 5.2 Too-close contacts [i](#)

In the following table, the Non-H and H(model) columns list the number of non-hydrogen atoms and hydrogen atoms in the chain respectively. The H(added) column lists the number of hydrogen atoms added and optimized by MolProbity. The Clashes column lists the number of clashes within the asymmetric unit, whereas Symm-Clashes lists symmetry-related clashes.

Mol	Chain	Non-H	H(model)	H(added)	Clashes	Symm-Clashes
1	A	10107	0	10188	561	0
2	B	1118	0	562	33	0
3	A	36	0	0	0	0
3	B	1	0	0	0	0
All	All	11262	0	10750	571	0

The all-atom clashscore is defined as the number of clashes found per 1000 atoms (including hydrogen atoms). The all-atom clashscore for this structure is 26.

The worst 5 of 571 close contacts within the same asymmetric unit are listed below, sorted by their clash magnitude.

Atom-1	Atom-2	Interatomic distance (Å)	Clash overlap (Å)
1:A:947:LYS:HE3	1:A:951:LYS:CE	1.52	1.39
1:A:15:PRO:HA	1:A:24:PHE:CZ	1.70	1.26
1:A:1144:VAL:CG2	1:A:1163:ALA:HB2	1.65	1.25
1:A:979:ILE:CD1	1:A:1015:LYS:HD3	1.64	1.25
1:A:1084:GLN:O	1:A:1088:VAL:HG23	1.37	1.23

There are no symmetry-related clashes.

## 5.3 Torsion angles [i](#)

### 5.3.1 Protein backbone [i](#)

In the following table, the Percentiles column shows the percent Ramachandran outliers of the chain as a percentile score with respect to all X-ray entries followed by that with respect to entries of similar resolution.

The Analysed column shows the number of residues for which the backbone conformation was analysed, and the total number of residues.

Mol	Chain	Analysed	Favoured	Allowed	Outliers	Percentiles
1	A	1191/1232 (97%)	1140 (96%)	48 (4%)	3 (0%)	36 66

All (3) Ramachandran outliers are listed below:

Mol	Chain	Res	Type
1	A	15	PRO
1	A	499	PRO
1	A	1135	LYS

### 5.3.2 Protein sidechains [i](#)

In the following table, the Percentiles column shows the percent sidechain outliers of the chain as a percentile score with respect to all X-ray entries followed by that with respect to entries of similar resolution.

The Analysed column shows the number of residues for which the sidechain conformation was analysed, and the total number of residues.

Mol	Chain	Analysed	Rotameric	Outliers	Percentiles
1	A	1104/1119 (99%)	825 (75%)	279 (25%)	0 2

5 of 279 residues with a non-rotameric sidechain are listed below:

Mol	Chain	Res	Type
1	A	1051	PHE
1	A	1081	GLU
1	A	1147	LEU
1	A	424	ILE
1	A	407	ILE

Sometimes sidechains can be flipped to improve hydrogen bonding and reduce clashes. 5 of 22 such sidechains are listed below:

Mol	Chain	Res	Type
1	A	778	GLN
1	A	1049	GLN
1	A	997	ASN
1	A	1057	ASN
1	A	441	HIS

### 5.3.3 RNA [i](#)

Mol	Chain	Analysed	Backbone Outliers	Pucker Outliers
2	B	50/59 (84%)	13 (26%)	3 (6%)

5 of 13 RNA backbone outliers are listed below:

Mol	Chain	Res	Type
2	B	2	A
2	B	7	G
2	B	16	A
2	B	19	G
2	B	21	A

All (3) RNA pucker outliers are listed below:

Mol	Chain	Res	Type
2	B	16	A
2	B	21	A
2	B	50	A

## 5.4 Non-standard residues in protein, DNA, RNA chains [i](#)

There are no non-standard protein/DNA/RNA residues in this entry.

## 5.5 Carbohydrates [i](#)

There are no oligosaccharides in this entry.

## 5.6 Ligand geometry [i](#)

There are no ligands in this entry.

## 5.7 Other polymers [i](#)

There are no such residues in this entry.

## 5.8 Polymer linkage issues [i](#)

There are no chain breaks in this entry.

## 6 Fit of model and data [i](#)

### 6.1 Protein, DNA and RNA chains [i](#)

In the following table, the column labelled '#RSRZ > 2' contains the number (and percentage) of RSRZ outliers, followed by percent RSRZ outliers for the chain as percentile scores relative to all X-ray entries and entries of similar resolution. The OWAB column contains the minimum, median, 95<sup>th</sup> percentile and maximum values of the occupancy-weighted average B-factor per residue. The column labelled 'Q < 0.9' lists the number of (and percentage) of residues with an average occupancy less than 0.9.

Mol	Chain	Analysed	<RSRZ>	#RSRZ>2	OWAB(Å <sup>2</sup> )	Q<0.9
1	A	1187/1232 (96%)	0.40	49 (4%) 41 33	30, 68, 110, 163	0
2	B	52/59 (88%)	-0.30	3 (5%) 29 22	42, 59, 139, 148	0
All	All	1239/1291 (95%)	0.37	52 (4%) 40 32	30, 68, 113, 163	0

The worst 5 of 52 RSRZ outliers are listed below:

Mol	Chain	Res	Type	RSRZ
1	A	12	TYR	4.4
1	A	517	PHE	4.2
1	A	16	PHE	4.1
1	A	513	ASN	3.9
1	A	499	PRO	3.9

### 6.2 Non-standard residues in protein, DNA, RNA chains [i](#)

There are no non-standard protein/DNA/RNA residues in this entry.

### 6.3 Carbohydrates [i](#)

There are no oligosaccharides in this entry.

### 6.4 Ligands [i](#)

There are no ligands in this entry.

### 6.5 Other polymers [i](#)

There are no such residues in this entry.