



## wwPDB EM Validation Summary Report ⓘ

Mar 20, 2026 – 06:11 AM UTC

PDB ID : 8AA0 / pdb\_00008aa0  
EMDB ID : EMD-15289  
Title : Levan utilisation machinery (utilisome) with levan fructo-oligosaccharides DP 8-12  
Authors : White, J.B.R.; Silale, A.; Ranson, N.A.; van den Berg, B.  
Deposited on : 2022-06-29  
Resolution : 3.20 Å(reported)

This is a wwPDB EM Validation Summary Report for a publicly released PDB entry.

We welcome your comments at [validation@mail.wwpdb.org](mailto:validation@mail.wwpdb.org)

A user guide is available at

<https://www.wwpdb.org/validation/2017/EMValidationReportHelp>

with specific help available everywhere you see the ⓘ symbol.

The types of validation reports are described at

<http://www.wwpdb.org/validation/2017/FAQs#types>.

---

The following versions of software and data (see [references ⓘ](#)) were used in the production of this report:

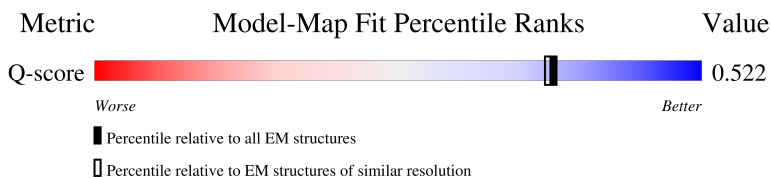
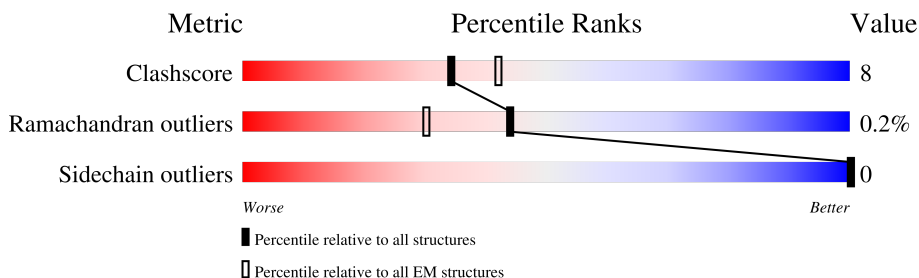
EMDB validation analysis : 0.0.1.dev132  
Mogul : 2022.3.0, CSD as543be (2022)  
MolProbity : 4-5-2 with Phenix2.0  
Percentile statistics : 20250101.v01 (using entries in the PDB archive January 1st 2025)  
EM percentile statistics : 202505.v01 (Using data in the EMDB archive up until May 2025)  
MapQ : 1.9.13  
Ideal geometry (proteins) : Engh & Huber (2001)  
Ideal geometry (DNA, RNA) : Parkinson et al. (1996)  
Validation Pipeline (wwPDB-VP) : 2.49

# 1 Overall quality at a glance i

The following experimental techniques were used to determine the structure:  
*ELECTRON MICROSCOPY*

The reported resolution of this entry is 3.20 Å.

Percentile scores (ranging between 0-100) for global validation metrics of the entry are shown in the following graphic. The table shows the number of entries on which the scores are based.






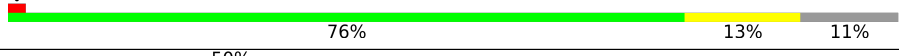
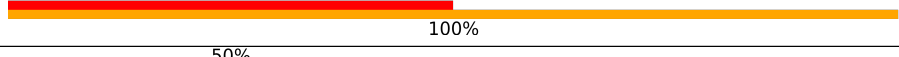

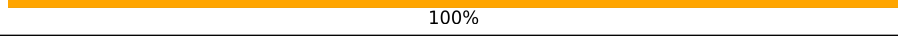
Metric	Whole archive (#Entries)	EM structures (#Entries)	Similar EM resolution (#Entries, resolution range(Å))
Clashscore	229148	23984	-
Ramachandran outliers	224038	23583	-
Sidechain outliers	223484	23102	-
Q-score	-	25397	15020 ( 2.70 - 3.70 )

The table below summarises the geometric issues observed across the polymeric chains and their fit to the map. The red, orange, yellow and green segments of the bar indicate the fraction of residues that contain outliers for  $\geq 3$ , 2, 1 and 0 types of geometric quality criteria respectively. A grey segment represents the fraction of residues that are not modelled. The numeric value for each fraction is indicated below the corresponding segment, with a dot representing fractions  $\leq 5\%$ . The upper red bar (where present) indicates the fraction of residues that have poor fit to the EM map (all-atom inclusion  $< 40\%$ ). The numeric value is given above the bar.

Mol	Chain	Length	Quality of chain
1	E	523	<p>20% (red), 69% (green), 26% (yellow), 5% (grey)</p>
1	M	523	<p>19% (red), 69% (green), 26% (yellow), 5% (grey)</p>
2	G	461	<p>16% (green), 5% (yellow), 79% (grey)</p>
2	T	461	<p>17% (green), 79% (grey)</p>

*Continued on next page...*

*Continued from previous page...*

Mol	Chain	Length	Quality of chain
3	B	580	 77% 18% 5%
3	J	580	 79% 16% 5%
4	A	1041	 75% 14% 11%
4	I	1041	 76% 13% 11%
5	D	4	 50% 100%
5	L	4	 50% 100%
6	C	7	 14% 86%
6	K	7	 14% 100%

## 2 Entry composition [i](#)

There are 7 unique types of molecules in this entry. The entry contains 33058 atoms, of which 0 are hydrogens and 0 are deuteriums.

In the tables below, the AltConf column contains the number of residues with at least one atom in alternate conformation and the Trace column contains the number of residues modelled with at most 2 atoms.

- Molecule 1 is a protein called Glycoside hydrolase family 32.

Mol	Chain	Residues	Atoms					AltConf	Trace
			Total	C	N	O	S		
1	E	497	Total	C	N	O	S	0	0
			3979	2527	657	775	20		
1	M	497	Total	C	N	O	S	0	0
			3979	2527	657	775	20		

- Molecule 2 is a protein called DUF4960 domain-containing protein.

Mol	Chain	Residues	Atoms					AltConf	Trace
			Total	C	N	O	S		
2	T	95	Total	C	N	O	S	0	0
			733	462	119	149	3		
2	G	95	Total	C	N	O	S	0	0
			733	462	119	149	3		

- Molecule 3 is a protein called SusD homolog.

Mol	Chain	Residues	Atoms					AltConf	Trace
			Total	C	N	O	S		
3	B	551	Total	C	N	O	S	0	0
			4432	2808	736	868	20		
3	J	551	Total	C	N	O	S	0	0
			4432	2808	736	868	20		

There are 20 discrepancies between the modelled and reference sequences:

Chain	Residue	Modelled	Actual	Comment	Reference
B	553	ALA	-	expression tag	UNP Q8A6W4
B	554	ALA	-	expression tag	UNP Q8A6W4
B	555	ALA	-	expression tag	UNP Q8A6W4
B	556	ALA	-	expression tag	UNP Q8A6W4
B	557	HIS	-	expression tag	UNP Q8A6W4
B	558	HIS	-	expression tag	UNP Q8A6W4
B	559	HIS	-	expression tag	UNP Q8A6W4
B	560	HIS	-	expression tag	UNP Q8A6W4
B	561	HIS	-	expression tag	UNP Q8A6W4

*Continued on next page...*

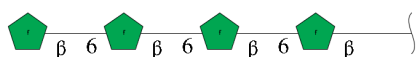
Continued from previous page...

Chain	Residue	Modelled	Actual	Comment	Reference
B	562	HIS	-	expression tag	UNP Q8A6W4
J	553	ALA	-	expression tag	UNP Q8A6W4
J	554	ALA	-	expression tag	UNP Q8A6W4
J	555	ALA	-	expression tag	UNP Q8A6W4
J	556	ALA	-	expression tag	UNP Q8A6W4
J	557	HIS	-	expression tag	UNP Q8A6W4
J	558	HIS	-	expression tag	UNP Q8A6W4
J	559	HIS	-	expression tag	UNP Q8A6W4
J	560	HIS	-	expression tag	UNP Q8A6W4
J	561	HIS	-	expression tag	UNP Q8A6W4
J	562	HIS	-	expression tag	UNP Q8A6W4

- Molecule 4 is a protein called SusC homolog.

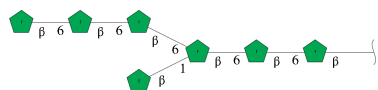
Mol	Chain	Residues	Atoms					AltConf	Trace
			Total	C	N	O	S		
4	A	924	Total	C	N	O	S	0	0
			7260	4583	1248	1408	21		
4	I	924	Total	C	N	O	S	0	0
			7260	4583	1248	1408	21		

- Molecule 5 is an oligosaccharide called beta-D-fructofuranose-(2-6)-beta-D-fructofuranose-(2-6)-beta-D-fructofuranose-(2-6)-beta-D-fructofuranose.



Mol	Chain	Residues	Atoms			AltConf	Trace
			Total	C	O		
5	D	4	Total	C	O	0	0
			45	24	21		
5	L	4	Total	C	O	0	0
			45	24	21		

- Molecule 6 is an oligosaccharide called beta-D-fructofuranose-(2-6)-beta-D-fructofuranose-(2-6)-beta-D-fructofuranose-(2-6)-[beta-D-fructofuranose-(2-1)]beta-D-fructofuranose-(2-6)-beta-D-fructofuranose-(2-6)-beta-D-fructofuranose.

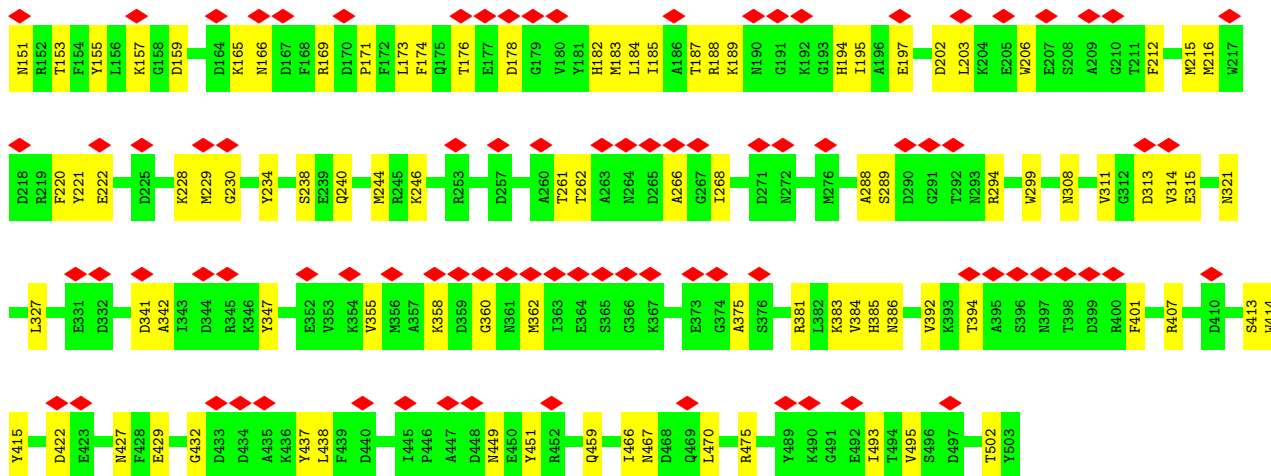


Mol	Chain	Residues	Atoms			AltConf	Trace
6	C	7	Total	C	O	0	0
			78	42	36		
6	K	7	Total	C	O	0	0
			78	42	36		

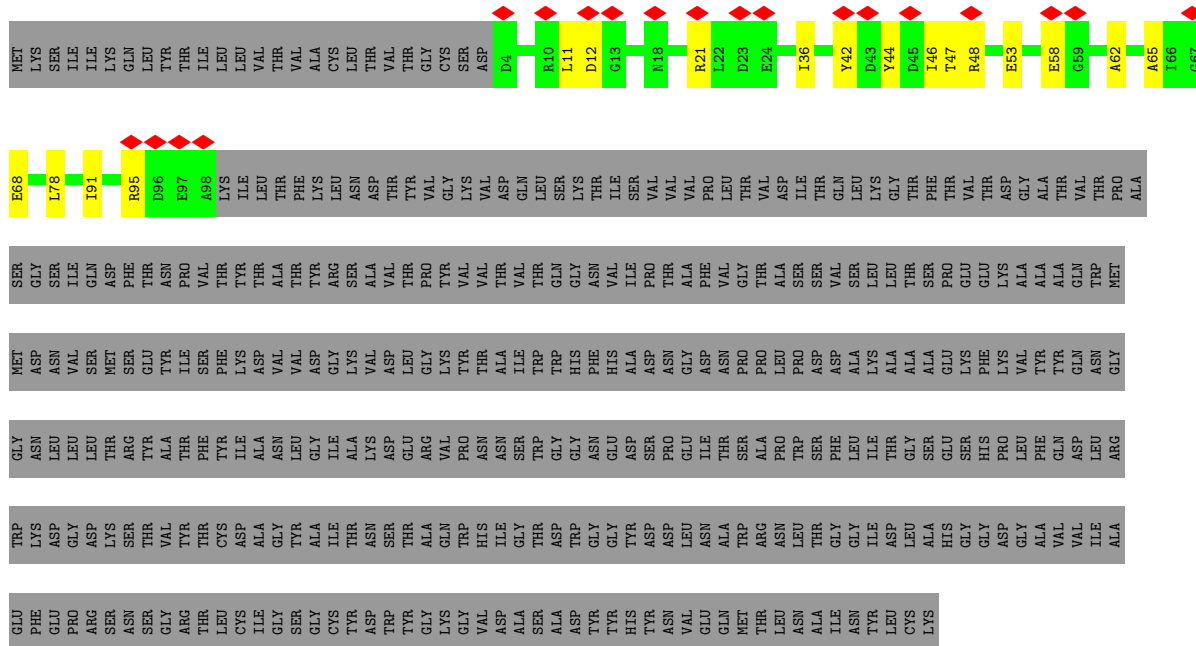
- Molecule 7 is MAGNESIUM ION (CCD ID: MG) (formula: Mg).

Mol	Chain	Residues	Atoms		AltConf
7	B	1	Total	Mg	0
			1	1	
7	A	1	Total	Mg	0
			1	1	
7	J	1	Total	Mg	0
			1	1	
7	I	1	Total	Mg	0
			1	1	

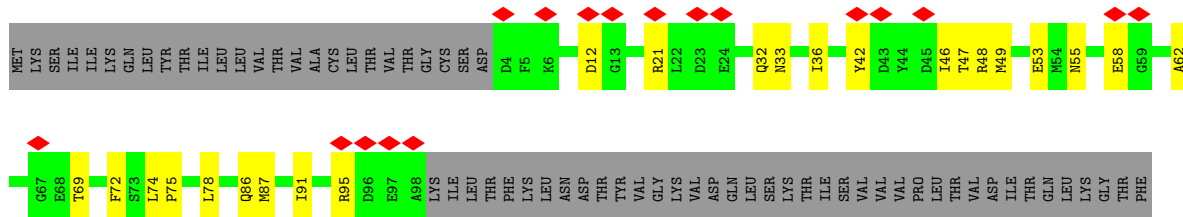




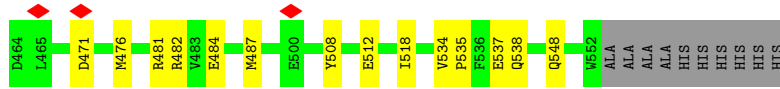
• Molecule 2: DUF4960 domain-containing protein



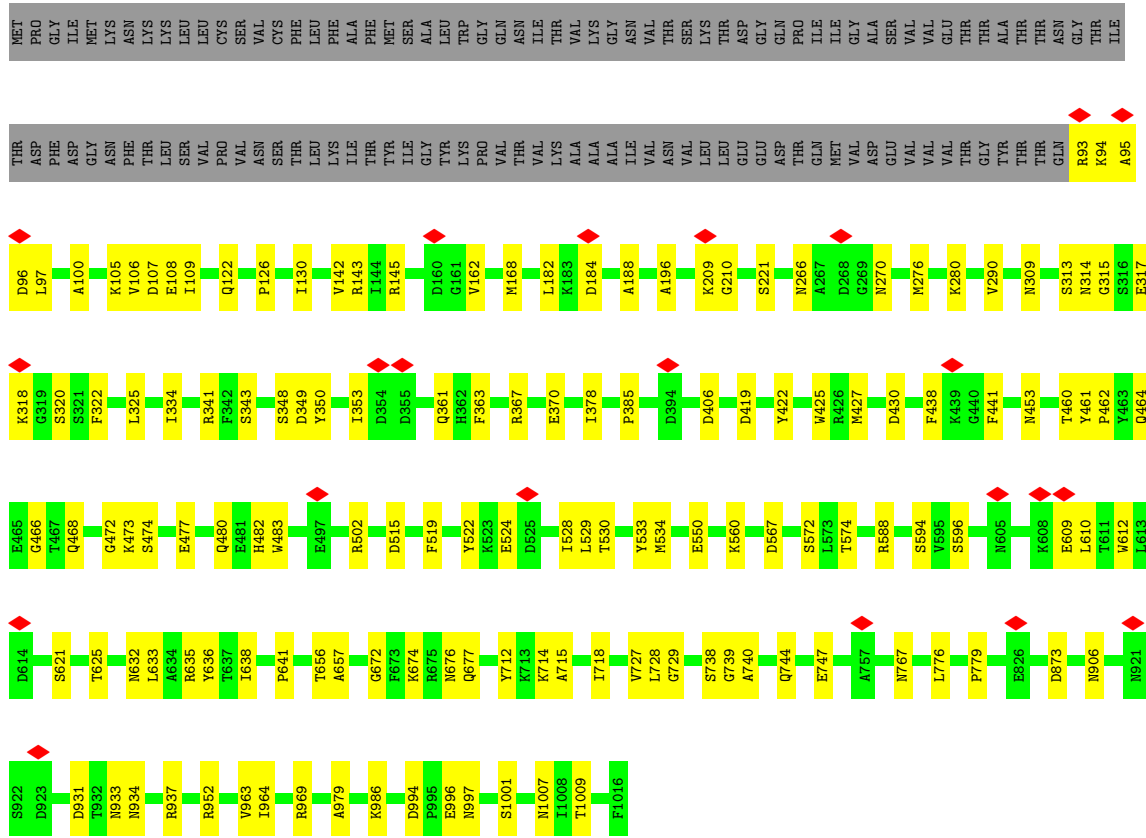
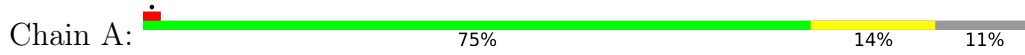
• Molecule 2: DUF4960 domain-containing protein



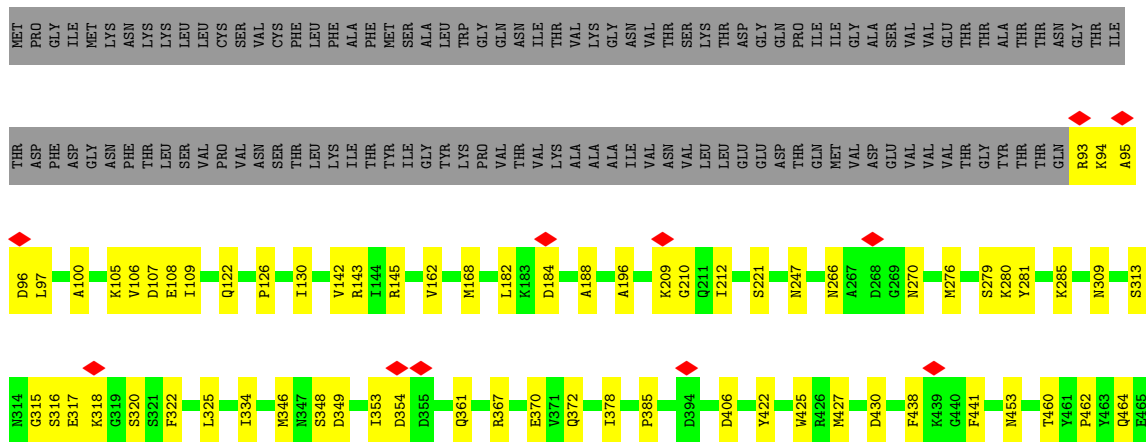
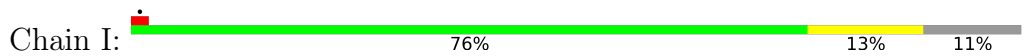


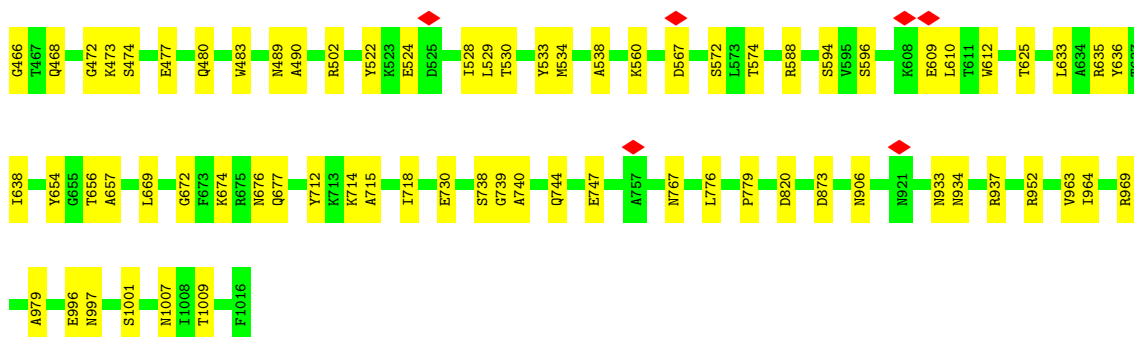


• Molecule 4: SusC homolog



• Molecule 4: SusC homolog





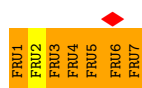
- Molecule 5: beta-D-fructofuranose-(2-6)-beta-D-fructofuranose-(2-6)-beta-D-fructofuranose-(2-6)-beta-D-fructofuranose



- Molecule 5: beta-D-fructofuranose-(2-6)-beta-D-fructofuranose-(2-6)-beta-D-fructofuranose-(2-6)-beta-D-fructofuranose



- Molecule 6: beta-D-fructofuranose-(2-6)-beta-D-fructofuranose-(2-6)-beta-D-fructofuranose-(2-6)-[beta-D-fructofuranose-(2-1)]beta-D-fructofuranose-(2-6)-beta-D-fructofuranose-(2-6)-beta-D-fructofuranose



- Molecule 6: beta-D-fructofuranose-(2-6)-beta-D-fructofuranose-(2-6)-beta-D-fructofuranose-(2-6)-[beta-D-fructofuranose-(2-1)]beta-D-fructofuranose-(2-6)-beta-D-fructofuranose-(2-6)-beta-D-fructofuranose



## 4 Experimental information

Property	Value	Source
EM reconstruction method	SINGLE PARTICLE	Depositor
Imposed symmetry	POINT, C2	Depositor
Number of particles used	15012	Depositor
Resolution determination method	FSC 0.143 CUT-OFF	Depositor
CTF correction method	PHASE FLIPPING AND AMPLITUDE CORRECTION	Depositor
Microscope	FEI TITAN KRIOS	Depositor
Voltage (kV)	300	Depositor
Electron dose ( $e^-/\text{\AA}^2$ )	38.5	Depositor
Minimum defocus (nm)	1500	Depositor
Maximum defocus (nm)	3000	Depositor
Magnification	Not provided	
Image detector	FEI FALCON III (4k x 4k)	Depositor
Maximum map value	0.180	Depositor
Minimum map value	-0.062	Depositor
Average map value	0.001	Depositor
Map value standard deviation	0.006	Depositor
Recommended contour level	0.0452	Depositor
Map size (Å)	319.50003, 319.50003, 319.50003	wwPDB
Map dimensions	300, 300, 300	wwPDB
Map angles (°)	90.0, 90.0, 90.0	wwPDB
Pixel spacing (Å)	1.065, 1.065, 1.065	Depositor

## 5 Model quality [i](#)

### 5.1 Standard geometry [i](#)

Bond lengths and bond angles in the following residue types are not validated in this section: FRU, MG

The Z score for a bond length (or angle) is the number of standard deviations the observed value is removed from the expected value. A bond length (or angle) with  $|Z| > 5$  is considered an outlier worth inspection. RMSZ is the root-mean-square of all Z scores of the bond lengths (or angles).

Mol	Chain	Bond lengths		Bond angles	
		RMSZ	# Z  >5	RMSZ	# Z  >5
1	E	0.19	0/4088	0.32	0/5544
1	M	0.19	0/4088	0.32	0/5544
2	G	0.18	0/743	0.34	0/1008
2	T	0.18	0/743	0.34	0/1008
3	B	0.26	0/4538	0.33	0/6158
3	J	0.26	0/4538	0.33	0/6158
4	A	0.27	0/7433	0.32	0/10076
4	I	0.27	0/7433	0.32	0/10076
All	All	0.25	0/33604	0.32	0/45572

There are no bond length outliers.

There are no bond angle outliers.

There are no chirality outliers.

There are no planarity outliers.

### 5.2 Too-close contacts [i](#)

In the following table, the Non-H and H(model) columns list the number of non-hydrogen atoms and hydrogen atoms in the chain respectively. The H(added) column lists the number of hydrogen atoms added and optimized by MolProbity. The Clashes column lists the number of clashes within the asymmetric unit, whereas Symm-Clashes lists symmetry-related clashes.

Mol	Chain	Non-H	H(model)	H(added)	Clashes	Symm-Clashes
1	E	3979	0	3735	88	0
1	M	3979	0	3735	84	0
2	G	733	0	721	19	0
2	T	733	0	721	13	0
3	B	4432	0	4201	69	0

*Continued on next page...*

Continued from previous page...

Mol	Chain	Non-H	H(model)	H(added)	Clashes	Symm-Clashes
3	J	4432	0	4201	58	0
4	A	7260	0	6954	98	0
4	I	7260	0	6954	94	0
5	D	45	0	37	9	0
5	L	45	0	37	9	0
6	C	78	0	64	11	0
6	K	78	0	64	16	0
7	A	1	0	0	0	0
7	B	1	0	0	0	0
7	I	1	0	0	0	0
7	J	1	0	0	0	0
All	All	33058	0	31424	521	0

The all-atom clashscore is defined as the number of clashes found per 1000 atoms (including hydrogen atoms). The all-atom clashscore for this structure is 8.

The worst 5 of 521 close contacts within the same asymmetric unit are listed below, sorted by their clash magnitude.

Atom-1	Atom-2	Interatomic distance (Å)	Clash overlap (Å)
5:D:1:FRU:O5	5:D:1:FRU:C2	1.64	1.29
6:K:1:FRU:O5	6:K:1:FRU:C2	1.63	1.29
6:K:2:FRU:O5	6:K:2:FRU:C2	1.63	1.29
5:D:2:FRU:O5	5:D:2:FRU:C2	1.63	1.29
6:K:7:FRU:O5	6:K:7:FRU:C2	1.64	1.29

There are no symmetry-related clashes.

## 5.3 Torsion angles [i](#)

### 5.3.1 Protein backbone [i](#)

In the following table, the Percentiles column shows the percent Ramachandran outliers of the chain as a percentile score with respect to all PDB entries followed by that with respect to all EM entries.

The Analysed column shows the number of residues for which the backbone conformation was analysed, and the total number of residues.

Mol	Chain	Analysed	Favoured	Allowed	Outliers	Percentiles
1	E	495/523 (95%)	465 (94%)	28 (6%)	2 (0%)	30 62

Continued on next page...

Continued from previous page...

Mol	Chain	Analysed	Favoured	Allowed	Outliers	Percentiles	
1	M	495/523 (95%)	465 (94%)	28 (6%)	2 (0%)	30	62
2	G	93/461 (20%)	80 (86%)	13 (14%)	0	100	100
2	T	93/461 (20%)	81 (87%)	12 (13%)	0	100	100
3	B	549/580 (95%)	527 (96%)	22 (4%)	0	100	100
3	J	549/580 (95%)	527 (96%)	22 (4%)	0	100	100
4	A	922/1041 (89%)	891 (97%)	29 (3%)	2 (0%)	43	73
4	I	922/1041 (89%)	891 (97%)	29 (3%)	2 (0%)	43	73
All	All	4118/5210 (79%)	3927 (95%)	183 (4%)	8 (0%)	44	73

5 of 8 Ramachandran outliers are listed below:

Mol	Chain	Res	Type
1	E	459	GLN
1	M	459	GLN
4	A	95	ALA
4	I	95	ALA
4	A	353	ILE

### 5.3.2 Protein sidechains [i](#)

In the following table, the Percentiles column shows the percent sidechain outliers of the chain as a percentile score with respect to all PDB entries followed by that with respect to all EM entries.

The Analysed column shows the number of residues for which the sidechain conformation was analysed, and the total number of residues.

Mol	Chain	Analysed	Rotameric	Outliers	Percentiles	
1	E	421/444 (95%)	421 (100%)	0	100	100
1	M	421/444 (95%)	421 (100%)	0	100	100
2	G	81/387 (21%)	81 (100%)	0	100	100
2	T	81/387 (21%)	81 (100%)	0	100	100
3	B	471/495 (95%)	471 (100%)	0	100	100
3	J	471/495 (95%)	471 (100%)	0	100	100
4	A	766/869 (88%)	766 (100%)	0	100	100
4	I	766/869 (88%)	766 (100%)	0	100	100
All	All	3478/4390 (79%)	3478 (100%)	0	100	100

There are no protein residues with a non-rotameric sidechain to report.

Sometimes sidechains can be flipped to improve hydrogen bonding and reduce clashes. 5 of 39 such sidechains are listed below:

Mol	Chain	Res	Type
4	I	247	ASN
4	I	744	GLN
4	I	361	GLN
4	I	468	GLN
4	I	816	GLN

### 5.3.3 RNA [i](#)

There are no RNA molecules in this entry.

## 5.4 Non-standard residues in protein, DNA, RNA chains [i](#)

There are no non-standard protein/DNA/RNA residues in this entry.

## 5.5 Carbohydrates [i](#)

22 monosaccharides are modelled in this entry.

In the following table, the Counts columns list the number of bonds (or angles) for which Mogul statistics could be retrieved, the number of bonds (or angles) that are observed in the model and the number of bonds (or angles) that are defined in the Chemical Component Dictionary. The Link column lists molecule types, if any, to which the group is linked. The Z score for a bond length (or angle) is the number of standard deviations the observed value is removed from the expected value. A bond length (or angle) with  $|Z| > 2$  is considered an outlier worth inspection. RMSZ is the root-mean-square of all Z scores of the bond lengths (or angles).

Mol	Type	Chain	Res	Link	Bond lengths			Bond angles		
					Counts	RMSZ	$\# Z  > 2$	Counts	RMSZ	$\# Z  > 2$
6	FRU	C	1	6	11,12,12	4.68	6 (54%)	10,18,18	0.86	0
6	FRU	C	2	6	11,11,12	4.10	6 (54%)	15,15,18	1.01	2 (13%)
6	FRU	C	3	6	11,11,12	4.11	6 (54%)	15,15,18	1.01	1 (6%)
6	FRU	C	4	6	11,11,12	4.09	6 (54%)	15,15,18	1.15	1 (6%)
6	FRU	C	5	6	11,11,12	4.11	6 (54%)	15,15,18	0.95	1 (6%)
6	FRU	C	6	6	11,11,12	4.10	6 (54%)	15,15,18	1.07	2 (13%)
6	FRU	C	7	6	11,11,12	4.12	6 (54%)	15,15,18	1.04	2 (13%)
5	FRU	D	1	5	11,12,12	4.71	6 (54%)	10,18,18	0.93	0

Mol	Type	Chain	Res	Link	Bond lengths			Bond angles		
					Counts	RMSZ	# Z  > 2	Counts	RMSZ	# Z  > 2
5	FRU	D	2	5	11,11,12	4.10	6 (54%)	15,15,18	1.01	1 (6%)
5	FRU	D	3	5	11,11,12	4.07	6 (54%)	15,15,18	1.05	2 (13%)
5	FRU	D	4	5	11,11,12	4.11	6 (54%)	15,15,18	1.16	3 (20%)
6	FRU	K	1	6	11,12,12	4.69	6 (54%)	10,18,18	0.86	0
6	FRU	K	2	6	11,11,12	4.11	6 (54%)	15,15,18	1.00	2 (13%)
6	FRU	K	3	6	11,11,12	4.11	6 (54%)	15,15,18	1.01	1 (6%)
6	FRU	K	4	6	11,11,12	4.09	6 (54%)	15,15,18	1.15	1 (6%)
6	FRU	K	5	6	11,11,12	4.12	6 (54%)	15,15,18	0.94	1 (6%)
6	FRU	K	6	6	11,11,12	4.10	6 (54%)	15,15,18	1.07	2 (13%)
6	FRU	K	7	6	11,11,12	4.11	6 (54%)	15,15,18	1.04	2 (13%)
5	FRU	L	1	5	11,12,12	4.70	6 (54%)	10,18,18	0.93	0
5	FRU	L	2	5	11,11,12	4.09	6 (54%)	15,15,18	1.01	1 (6%)
5	FRU	L	3	5	11,11,12	4.09	6 (54%)	15,15,18	1.04	2 (13%)
5	FRU	L	4	5	11,11,12	4.11	6 (54%)	15,15,18	1.16	3 (20%)

In the following table, the Chirals column lists the number of chiral outliers, the number of chiral centers analysed, the number of these observed in the model and the number defined in the Chemical Component Dictionary. Similar counts are reported in the Torsion and Rings columns. '2' means no outliers of that kind were identified.

Mol	Type	Chain	Res	Link	Chirals	Torsions	Rings
6	FRU	C	1	6	-	3/5/24/24	0/1/1/1
6	FRU	C	2	6	-	2/4/20/24	0/1/1/1
6	FRU	C	3	6	-	2/4/20/24	0/1/1/1
6	FRU	C	4	6	-	4/4/20/24	0/1/1/1
6	FRU	C	5	6	-	2/4/20/24	0/1/1/1
6	FRU	C	6	6	-	1/4/20/24	0/1/1/1
6	FRU	C	7	6	-	4/4/20/24	0/1/1/1
5	FRU	D	1	5	-	4/5/24/24	0/1/1/1
5	FRU	D	2	5	-	4/4/20/24	0/1/1/1
5	FRU	D	3	5	-	2/4/20/24	0/1/1/1
5	FRU	D	4	5	-	4/4/20/24	0/1/1/1
6	FRU	K	1	6	-	3/5/24/24	0/1/1/1
6	FRU	K	2	6	-	2/4/20/24	0/1/1/1
6	FRU	K	3	6	-	2/4/20/24	0/1/1/1
6	FRU	K	4	6	-	4/4/20/24	0/1/1/1

*Continued on next page...*

Continued from previous page...

Mol	Type	Chain	Res	Link	Chirals	Torsions	Rings
6	FRU	K	5	6	-	2/4/20/24	0/1/1/1
6	FRU	K	6	6	-	1/4/20/24	0/1/1/1
6	FRU	K	7	6	-	4/4/20/24	0/1/1/1
5	FRU	L	1	5	-	4/5/24/24	0/1/1/1
5	FRU	L	2	5	-	4/4/20/24	0/1/1/1
5	FRU	L	3	5	-	2/4/20/24	0/1/1/1
5	FRU	L	4	5	-	4/4/20/24	0/1/1/1

The worst 5 of 132 bond length outliers are listed below:

Mol	Chain	Res	Type	Atoms	Z	Observed(Å)	Ideal(Å)
5	D	1	FRU	O5-C2	12.95	1.64	1.43
5	L	1	FRU	O5-C2	12.94	1.64	1.43
6	K	1	FRU	O5-C2	12.81	1.63	1.43
6	C	1	FRU	O5-C2	12.79	1.63	1.43
5	D	4	FRU	O5-C2	8.79	1.64	1.45

The worst 5 of 30 bond angle outliers are listed below:

Mol	Chain	Res	Type	Atoms	Z	Observed(°)	Ideal(°)
5	D	4	FRU	C1-C2-C3	-2.74	108.63	115.10
5	L	4	FRU	C1-C2-C3	-2.74	108.64	115.10
6	K	4	FRU	C1-C2-C3	-2.56	109.05	115.10
6	C	4	FRU	C1-C2-C3	-2.56	109.06	115.10
6	C	3	FRU	C1-C2-C3	-2.55	109.08	115.10

There are no chirality outliers.

5 of 64 torsion outliers are listed below:

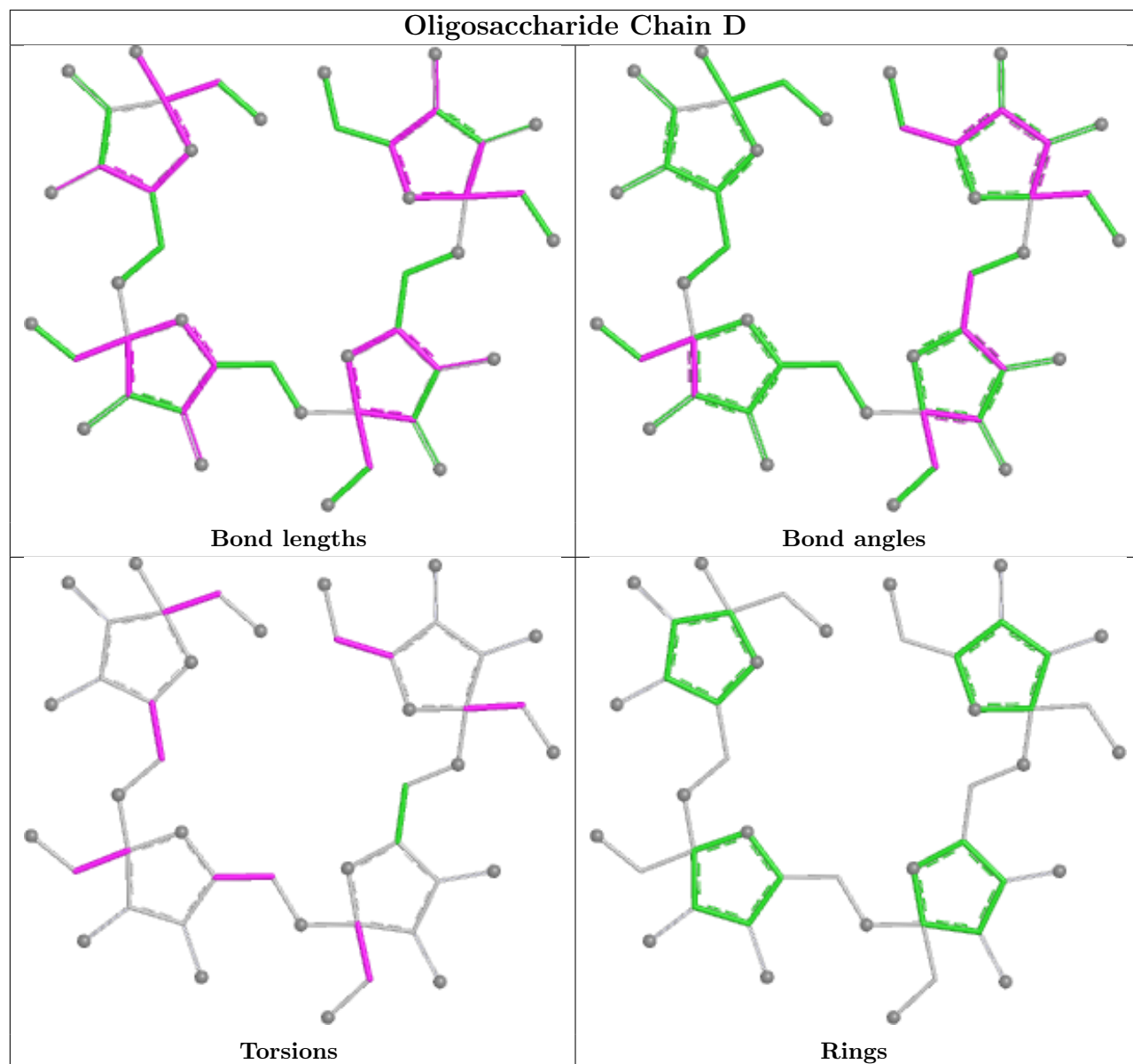
Mol	Chain	Res	Type	Atoms
5	D	1	FRU	O1-C1-C2-C3
5	D	1	FRU	O1-C1-C2-O2
5	D	1	FRU	O1-C1-C2-O5
5	D	3	FRU	O1-C1-C2-C3
5	L	1	FRU	O1-C1-C2-C3

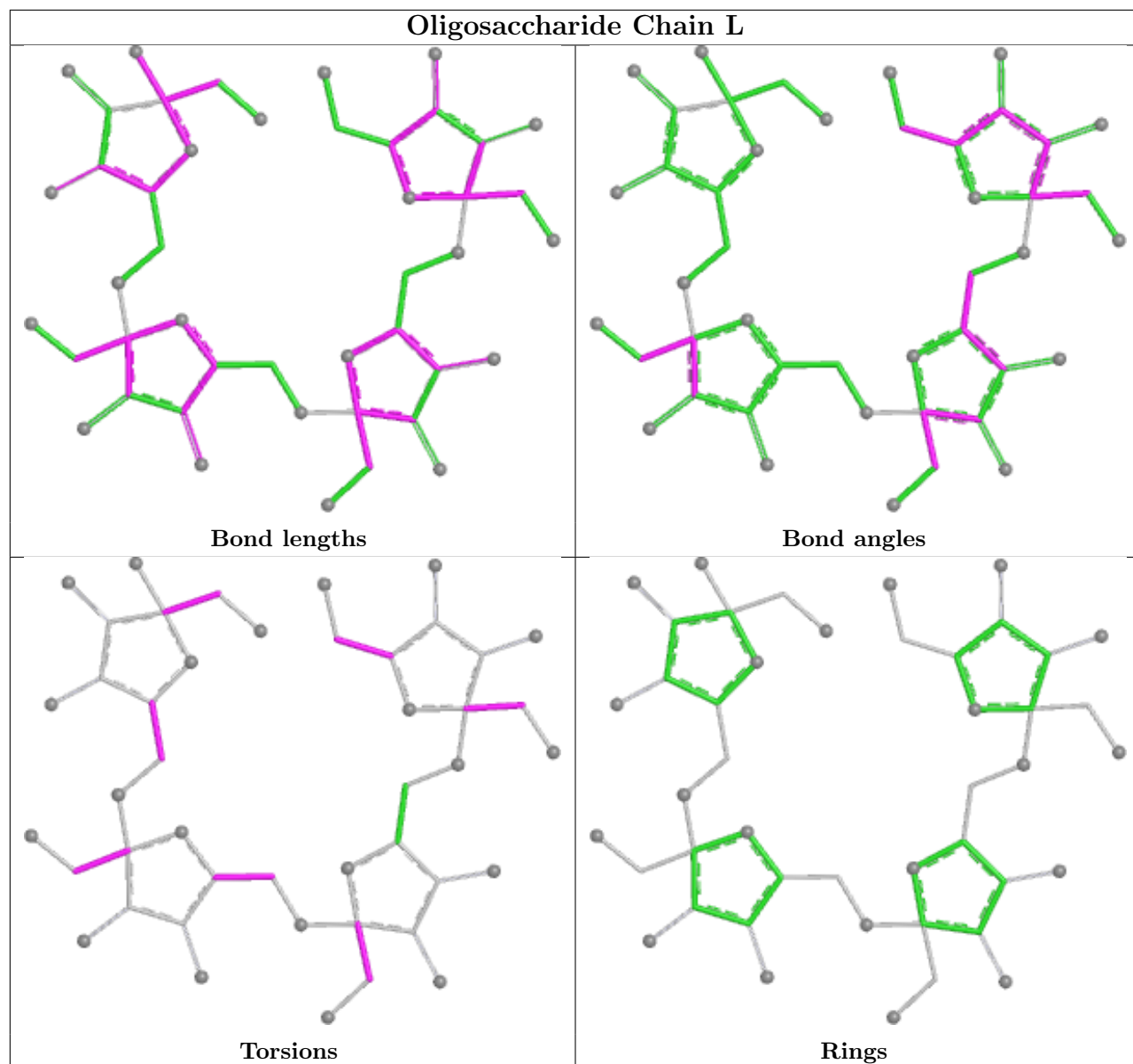
There are no ring outliers.

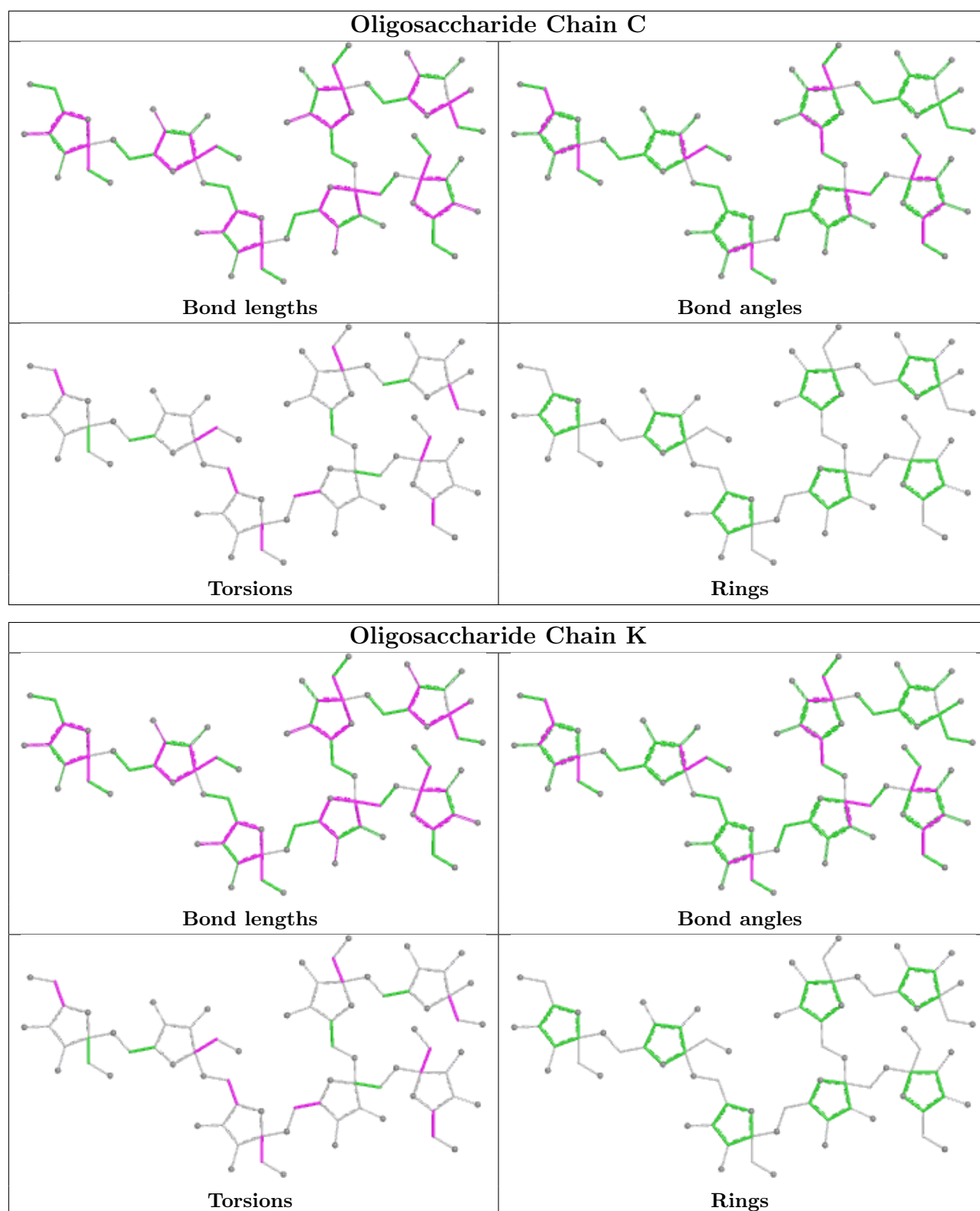
21 monomers are involved in 45 short contacts:

Mol	Chain	Res	Type	Clashes	Symm-Clashes
6	C	5	FRU	3	0
6	C	3	FRU	3	0
5	L	2	FRU	3	0
6	K	1	FRU	3	0
6	C	4	FRU	1	0
5	L	1	FRU	2	0
5	L	3	FRU	4	0
6	K	7	FRU	3	0
6	C	6	FRU	3	0
6	C	7	FRU	4	0
6	K	3	FRU	5	0
6	K	6	FRU	3	0
6	K	2	FRU	3	0
6	K	5	FRU	3	0
5	D	2	FRU	2	0
6	C	1	FRU	1	0
5	D	3	FRU	4	0
5	L	4	FRU	3	0
5	D	4	FRU	4	0
5	D	1	FRU	2	0
6	K	4	FRU	4	0

The following is a two-dimensional graphical depiction of Mogul quality analysis of bond lengths, bond angles, torsion angles, and ring geometry for oligosaccharide.







## 5.6 Ligand geometry [i](#)

Of 4 ligands modelled in this entry, 4 are monoatomic - leaving 0 for Mogul analysis.

There are no bond length outliers.

There are no bond angle outliers.

There are no chirality outliers.

There are no torsion outliers.

There are no ring outliers.

No monomer is involved in short contacts.

## 5.7 Other polymers

There are no such residues in this entry.

## 5.8 Polymer linkage issues

There are no chain breaks in this entry.

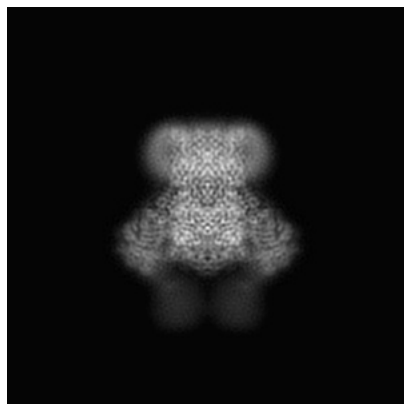
## 6 Map visualisation [i](#)

This section contains visualisations of the EMDB entry EMD-15289. These allow visual inspection of the internal detail of the map and identification of artifacts.

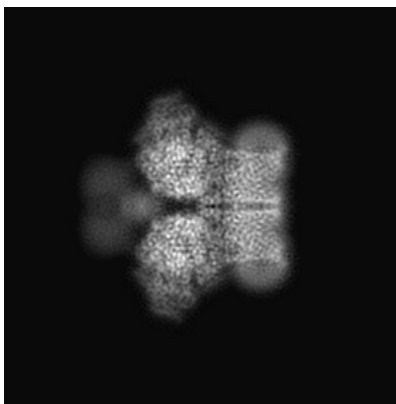
Images derived from a raw map, generated by summing the deposited half-maps, are presented below the corresponding image components of the primary map to allow further visual inspection and comparison with those of the primary map.

### 6.1 Orthogonal projections [i](#)

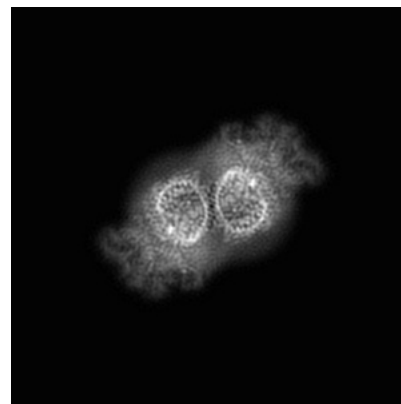
#### 6.1.1 Primary map



X

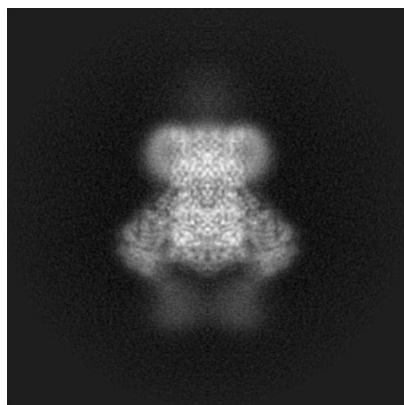


Y

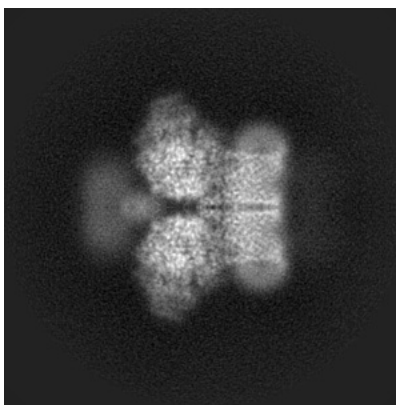


Z

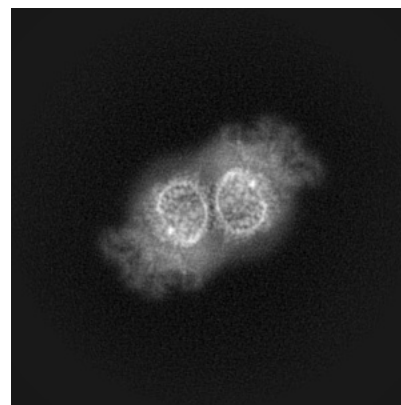
#### 6.1.2 Raw map



X



Y

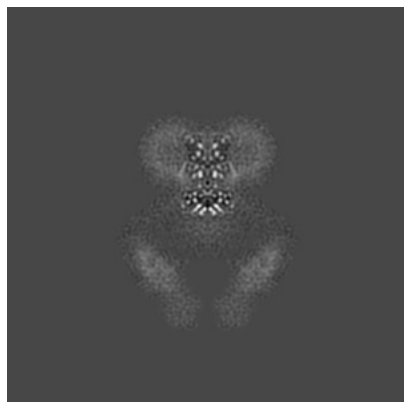


Z

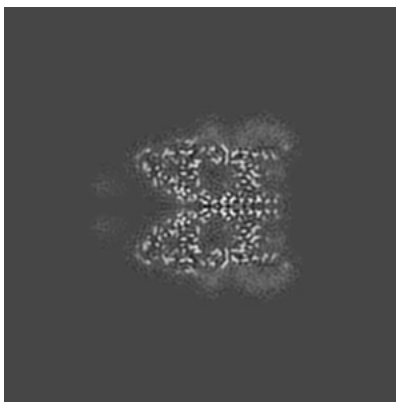
The images above show the map projected in three orthogonal directions.

## 6.2 Central slices [i](#)

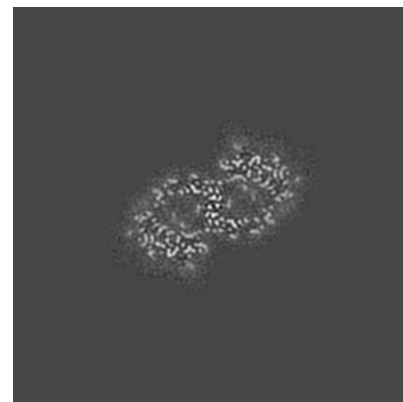
### 6.2.1 Primary map



X Index: 150

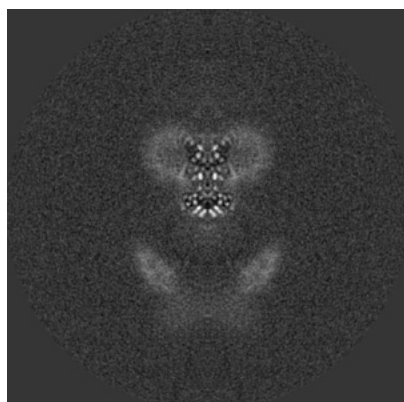


Y Index: 150

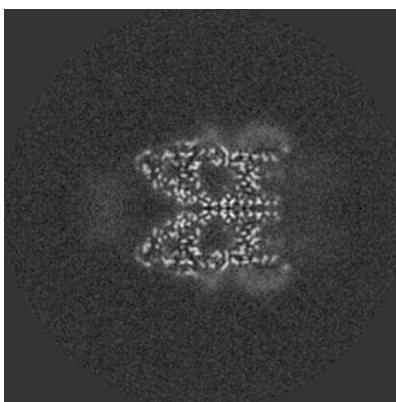


Z Index: 150

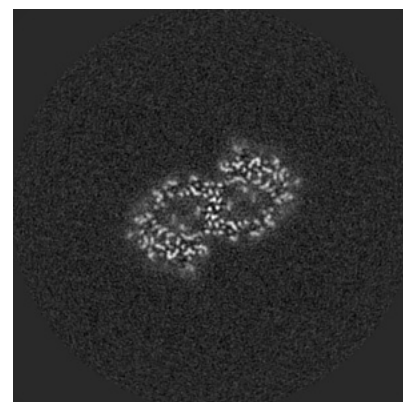
### 6.2.2 Raw map



X Index: 150



Y Index: 150

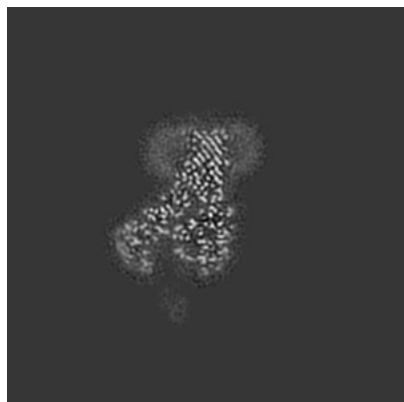


Z Index: 150

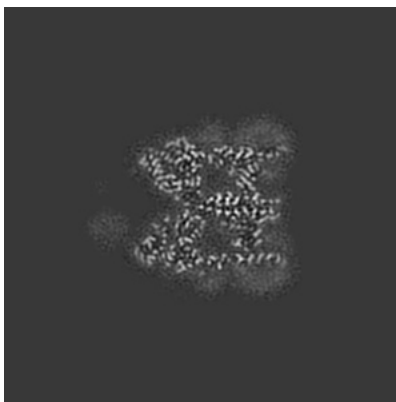
The images above show central slices of the map in three orthogonal directions.

## 6.3 Largest variance slices [i](#)

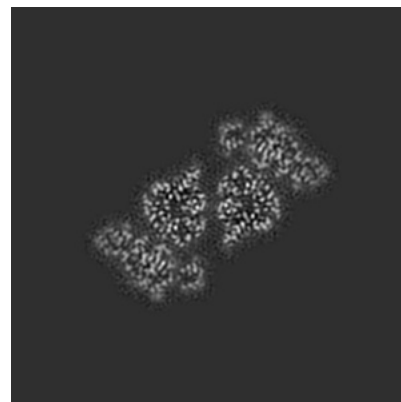
### 6.3.1 Primary map



X Index: 112

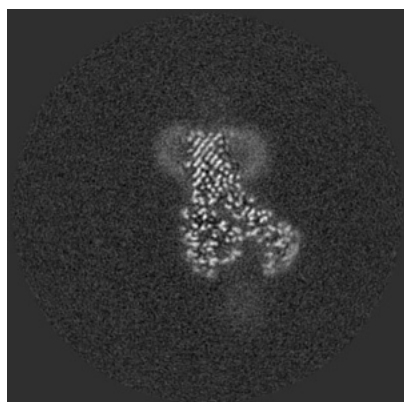


Y Index: 147

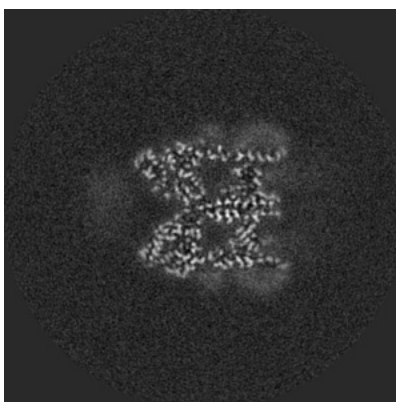


Z Index: 130

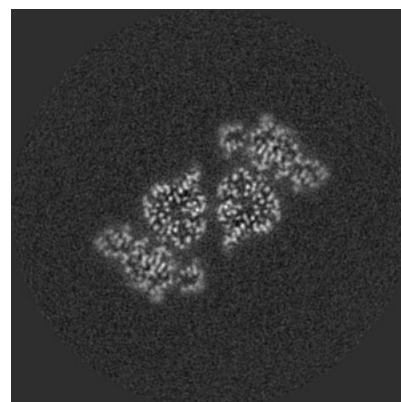
### 6.3.2 Raw map



X Index: 188



Y Index: 153

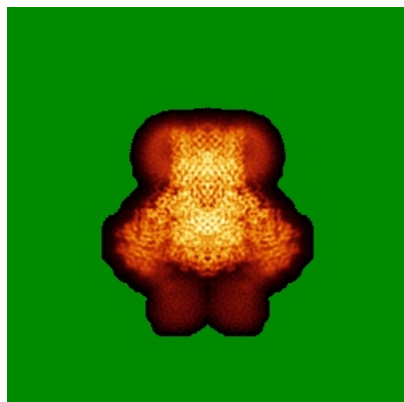


Z Index: 130

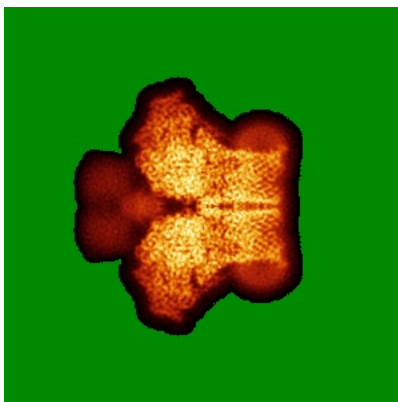
The images above show the largest variance slices of the map in three orthogonal directions.

## 6.4 Orthogonal standard-deviation projections (False-color) [i](#)

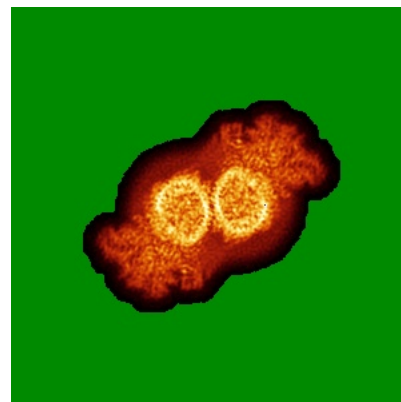
### 6.4.1 Primary map



X

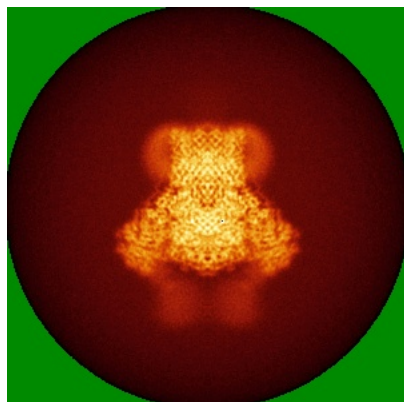


Y

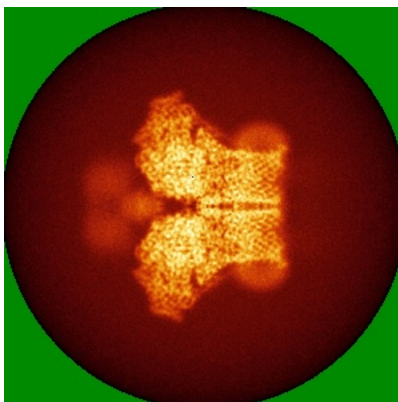


Z

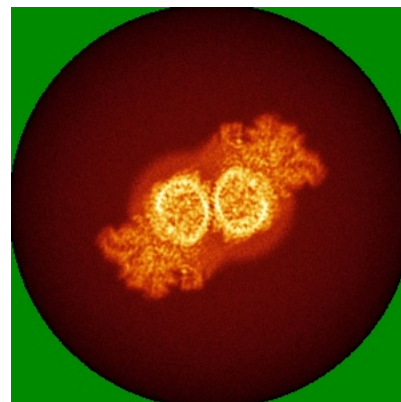
### 6.4.2 Raw map



X



Y



Z

The images above show the map standard deviation projections with false color in three orthogonal directions. Minimum values are shown in green, max in blue, and dark to light orange shades represent small to large values respectively.

## 6.5 Orthogonal surface views [i](#)

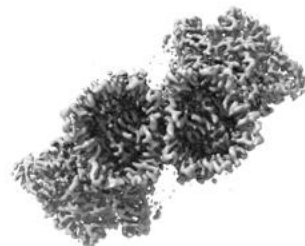
### 6.5.1 Primary map



X



Y



Z

The images above show the 3D surface view of the map at the recommended contour level 0.0452. These images, in conjunction with the slice images, may facilitate assessment of whether an appropriate contour level has been provided.

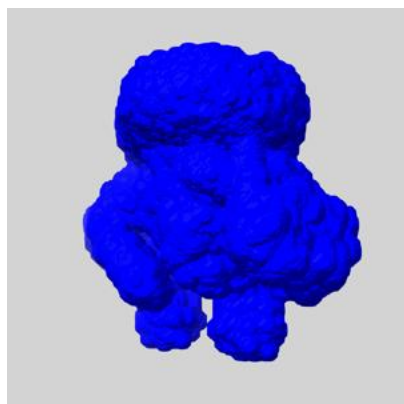
## 6.6 Mask visualisation [i](#)

This section shows the 3D surface view of the primary map at 50% transparency overlaid with the specified mask at 0% transparency

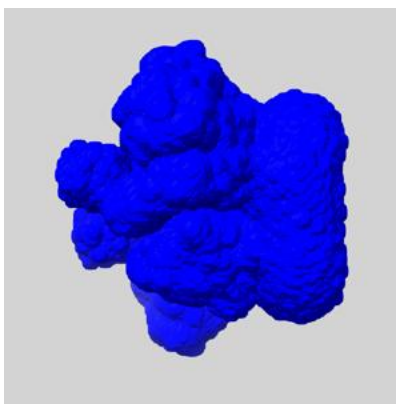
A mask typically either:

- Encompasses the whole structure
- Separates out a domain, a functional unit, a monomer or an area of interest from a larger structure

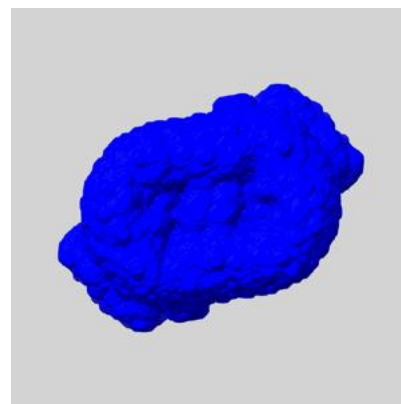
### 6.6.1 emd\_15289\_msk\_1.map [i](#)



X



Y

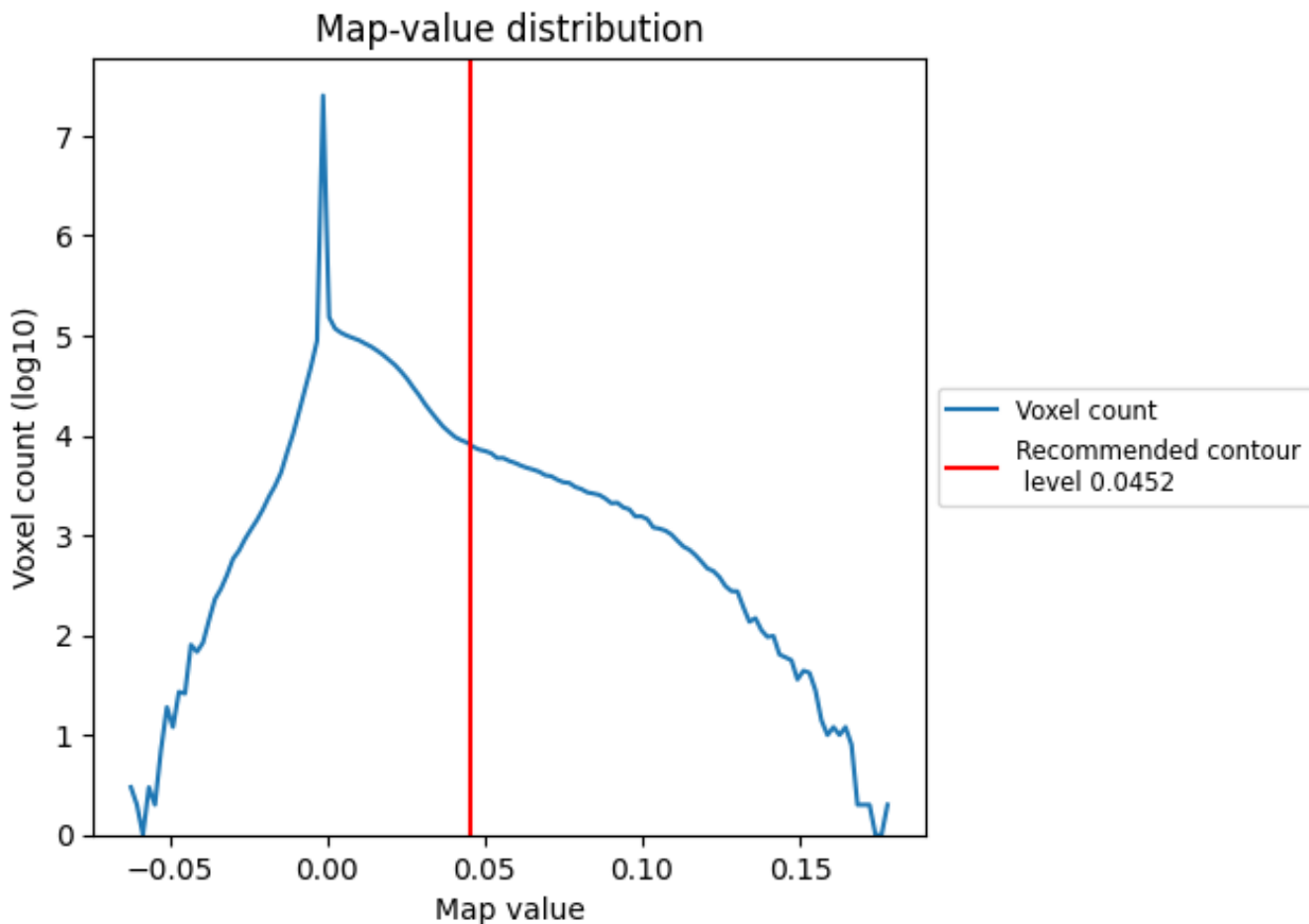


Z

## 7 Map analysis [i](#)

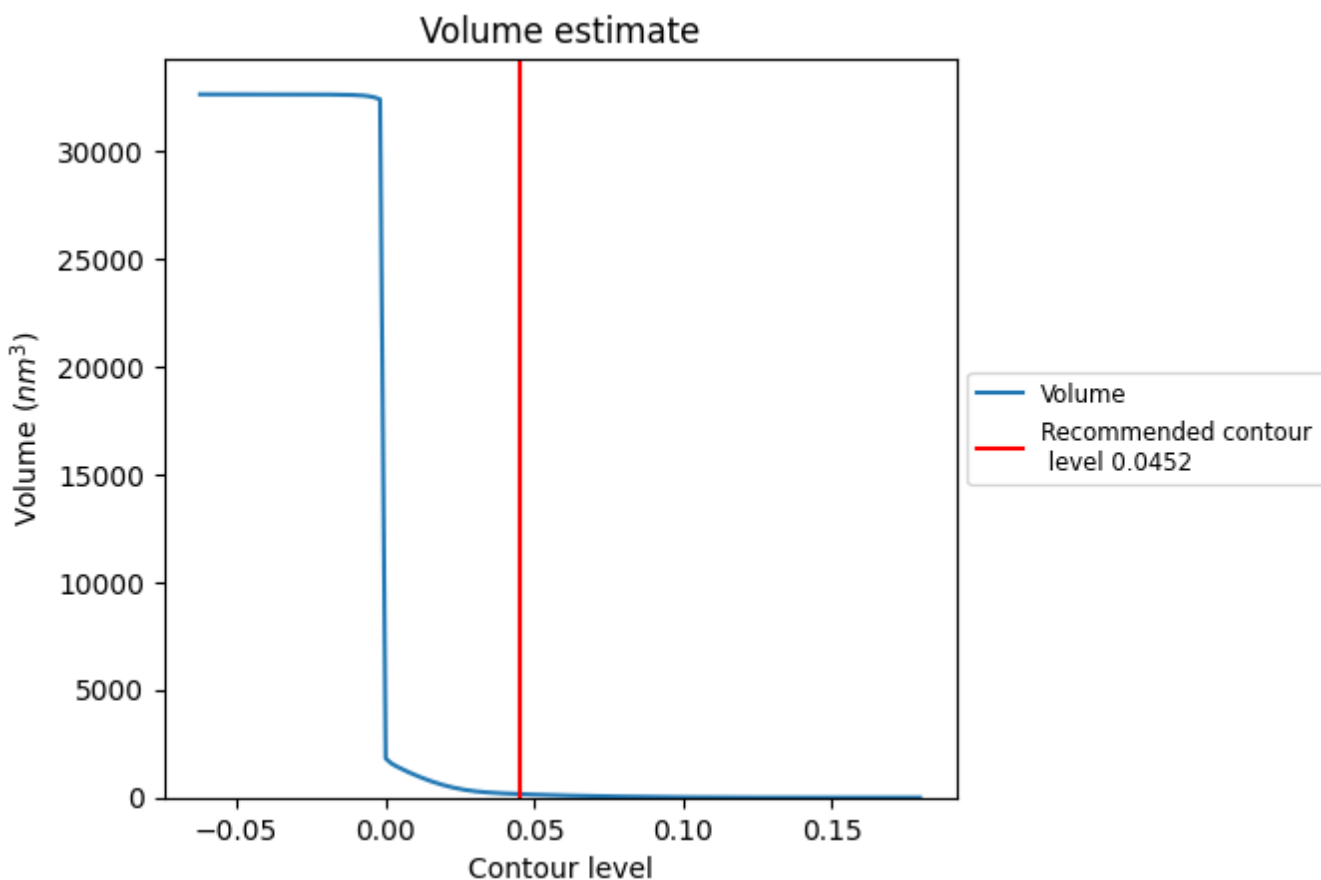
This section contains the results of statistical analysis of the map.

### 7.1 Map-value distribution [i](#)



The map-value distribution is plotted in 128 intervals along the x-axis. The y-axis is logarithmic. A spike in this graph at zero usually indicates that the volume has been masked.

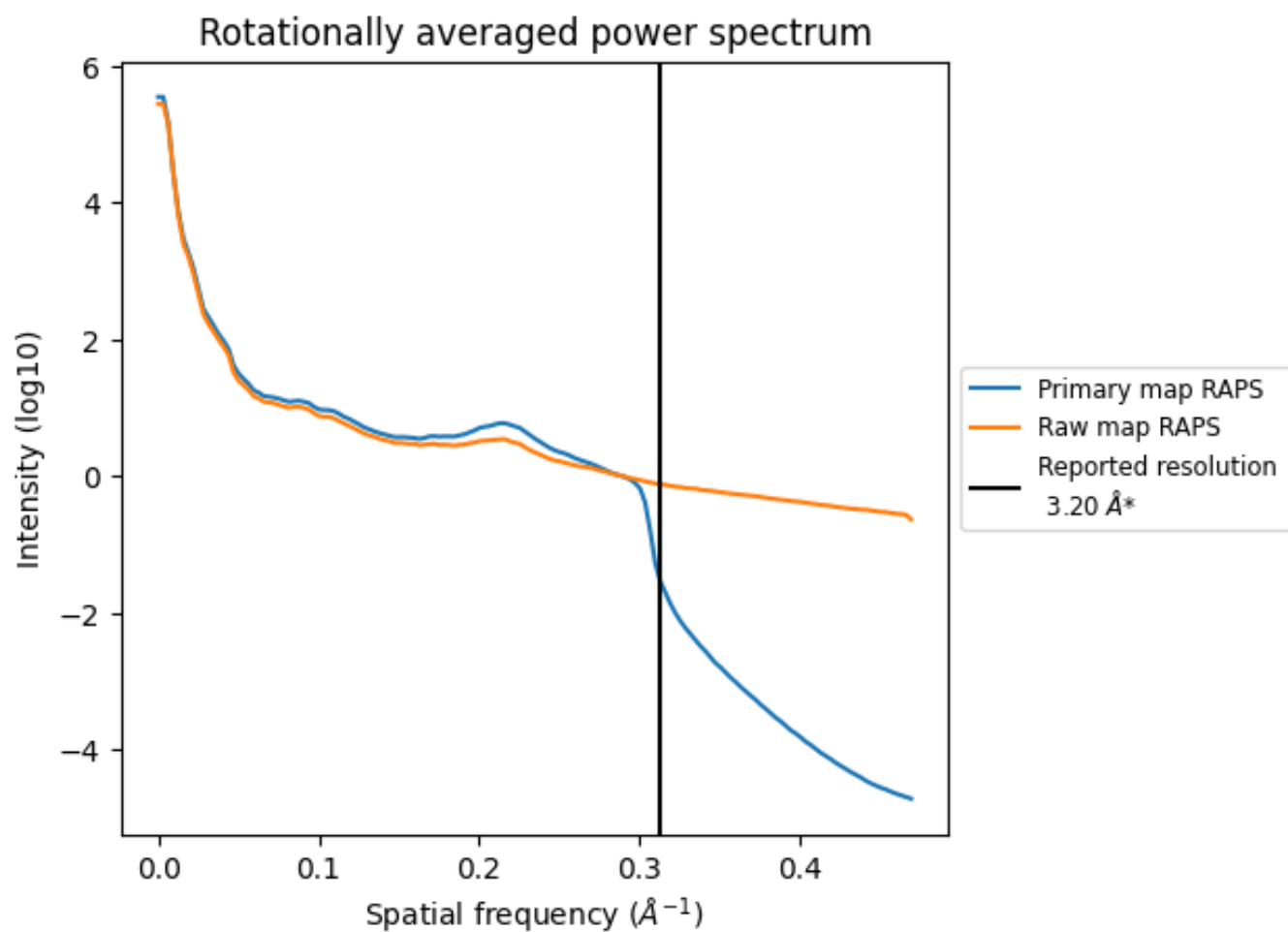
## 7.2 Volume estimate [i](#)



The volume at the recommended contour level is 161 nm<sup>3</sup>; this corresponds to an approximate mass of 145 kDa.

The volume estimate graph shows how the enclosed volume varies with the contour level. The recommended contour level is shown as a vertical line and the intersection between the line and the curve gives the volume of the enclosed surface at the given level.

### 7.3 Rotationally averaged power spectrum [i](#)

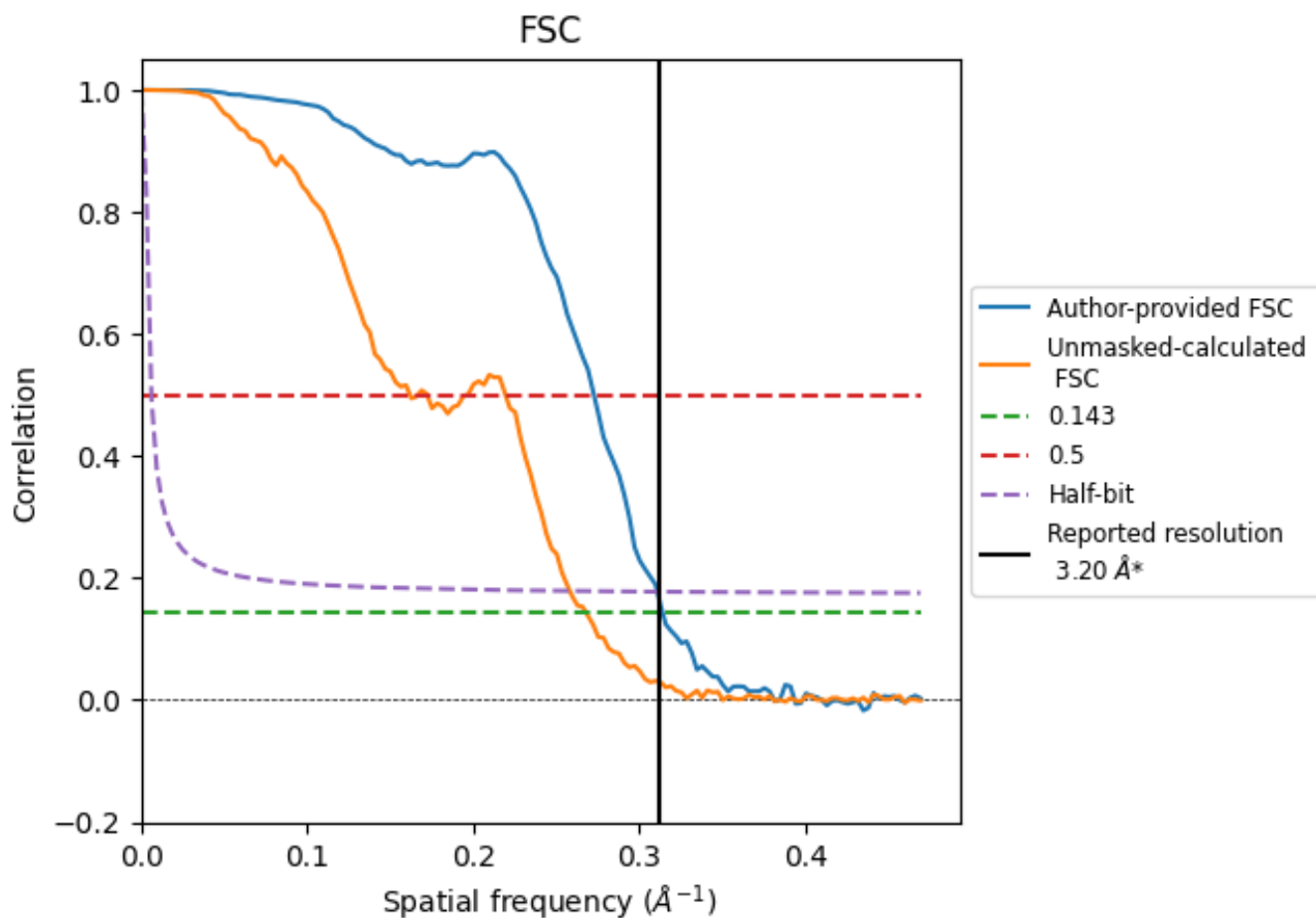


\*Reported resolution corresponds to spatial frequency of 0.312 Å<sup>-1</sup>

## 8 Fourier-Shell correlation [i](#)

Fourier-Shell Correlation (FSC) is the most commonly used method to estimate the resolution of single-particle and subtomogram-averaged maps. The shape of the curve depends on the imposed symmetry, mask and whether or not the two 3D reconstructions used were processed from a common reference. The reported resolution is shown as a black line. A curve is displayed for the half-bit criterion in addition to lines showing the 0.143 gold standard cut-off and 0.5 cut-off.

### 8.1 FSC [i](#)



\*Reported resolution corresponds to spatial frequency of  $0.312 \text{\AA}^{-1}$

## 8.2 Resolution estimates [i](#)

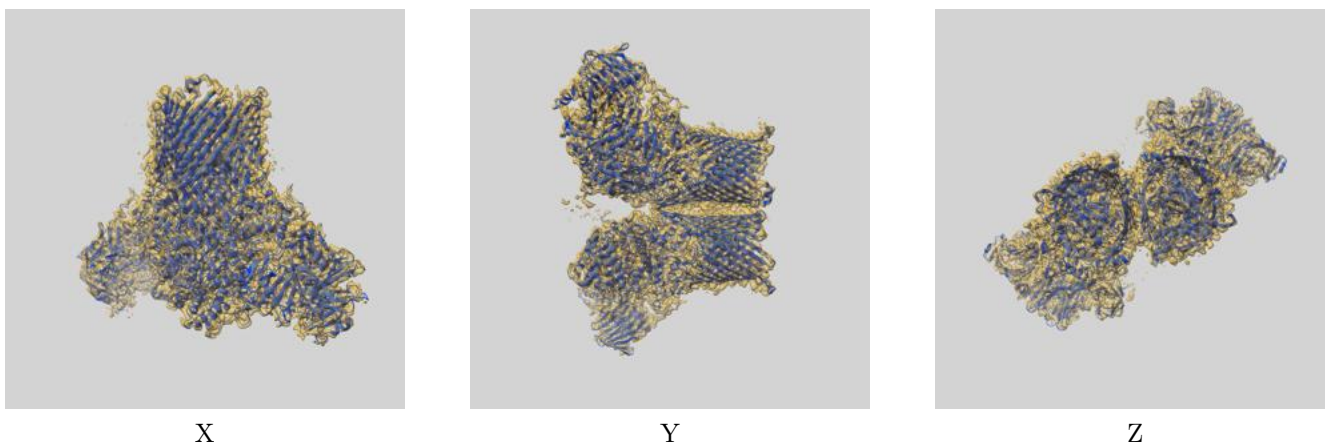
Resolution estimate (Å)	Estimation criterion (FSC cut-off)		
	0.143	0.5	Half-bit
Reported by author	3.20	-	-
Author-provided FSC curve	3.18	3.67	3.22
Unmasked-calculated*	3.73	6.18	3.87

\*Resolution estimate based on FSC curve calculated by comparison of deposited half-maps. The value from deposited half-maps intersecting FSC 0.143 CUT-OFF 3.73 differs from the reported value 3.2 by more than 10 %

## 9 Map-model fit [i](#)

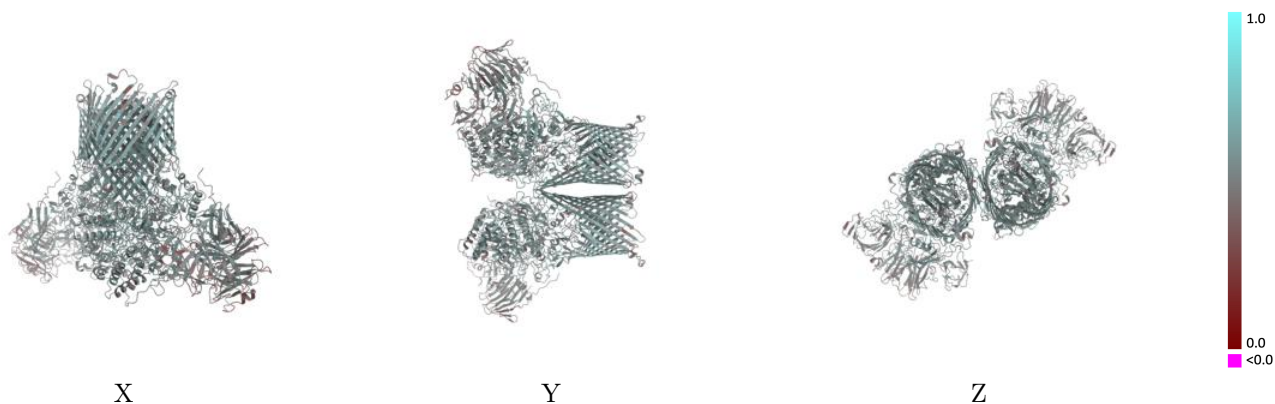
This section contains information regarding the fit between EMDB map EMD-15289 and PDB model 8AA0. Per-residue inclusion information can be found in section 3 on page 7.

### 9.1 Map-model overlay [i](#)



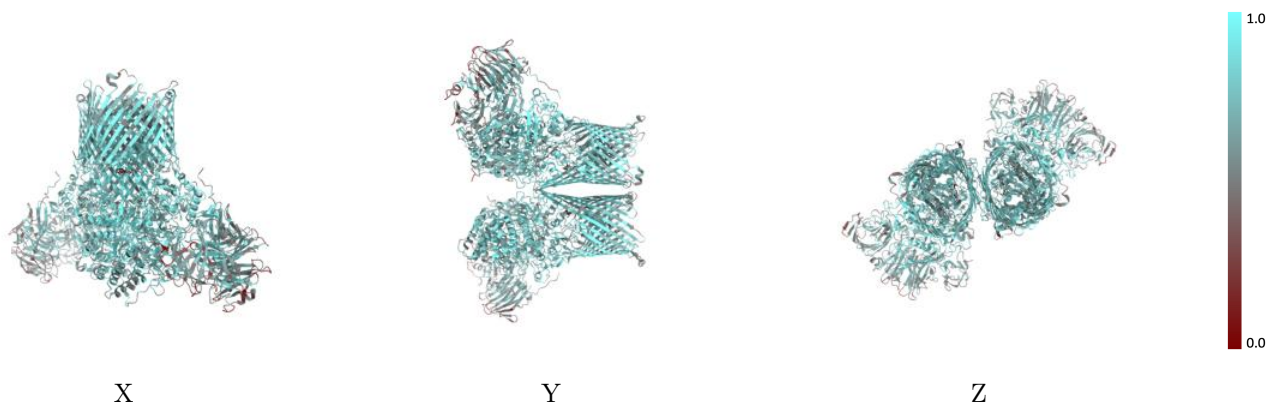
The images above show the 3D surface view of the map at the recommended contour level 0.0452 at 50% transparency in yellow overlaid with a ribbon representation of the model coloured in blue. These images allow for the visual assessment of the quality of fit between the atomic model and the map.

## 9.2 Q-score mapped to coordinate model [i](#)



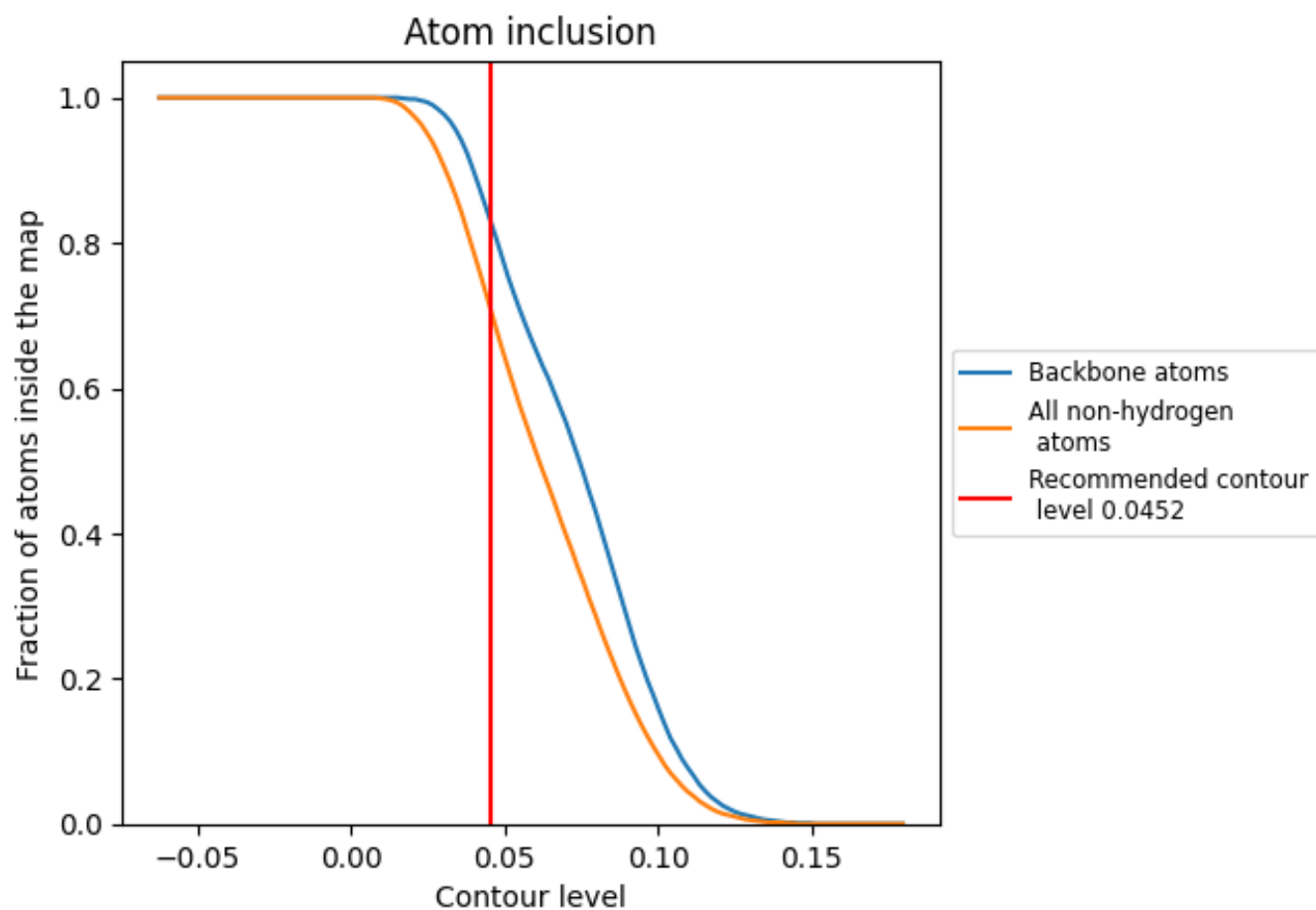
The images above show the model with each residue coloured according to its Q-score. This shows their resolvability in the map with higher Q-score values reflecting better resolvability. Please note: Q-score is calculating the resolvability of atoms, and thus high values are only expected at resolutions at which atoms can be resolved. Low Q-score values may therefore be expected for many entries.

## 9.3 Atom inclusion mapped to coordinate model [i](#)



The images above show the model with each residue coloured according to its atom inclusion. This shows to what extent they are inside the map at the recommended contour level (0.0452).



























## 9.4 Atom inclusion [i](#)



At the recommended contour level, 83% of all backbone atoms, 71% of all non-hydrogen atoms, are inside the map.

## 9.5 Map-model fit summary

The table lists the average atom inclusion at the recommended contour level (0.0452) and Q-score for the entire model and for each chain.

Chain	Atom inclusion	Q-score
All	 0.7130	 0.5220
A	 0.7710	 0.5450
B	 0.7680	 0.5410
C	 0.6030	 0.4770
D	 0.3110	 0.4560
E	 0.5850	 0.4730
G	 0.5800	 0.4880
I	 0.7680	 0.5440
J	 0.7650	 0.5400
K	 0.5900	 0.4930
L	 0.3110	 0.4160
M	 0.5830	 0.4670
T	 0.5690	 0.4800

