



# Full wwPDB X-ray Structure Validation Report ⓘ

Mar 18, 2026 – 07:38 AM UTC

PDB ID : 4ABA / pdb\_00004aba  
Title : Fragments bound to bovine trypsin for the SAMPL challenge  
Authors : Newman, J.; Peat, T.S.  
Deposited on : 2011-12-08  
Resolution : 1.25 Å(reported)

This is a Full wwPDB X-ray Structure Validation Report for a publicly released PDB entry.

We welcome your comments at [validation@mail.wwpdb.org](mailto:validation@mail.wwpdb.org)

A user guide is available at

<https://www.wwpdb.org/validation/2017/XrayValidationReportHelp>

with specific help available everywhere you see the ⓘ symbol.

The types of validation reports are described at

<http://www.wwpdb.org/validation/2017/FAQs#types>.

---

The following versions of software and data (see [references ⓘ](#)) were used in the production of this report:

MolProbity : 4-5-2 with Phenix2.0  
Mogul : 2022.3.0, CSD as543be (2022)  
Xtrriage (Phenix) : 2.0  
EDS : 3.0  
Percentile statistics : 20250101.v01 (using entries in the PDB archive January 1st 2025)  
CCP4 : 9.0.010 (Gargrove)  
Density-Fitness : 1.0.12  
Ideal geometry (proteins) : Engh & Huber (2001)  
Ideal geometry (DNA, RNA) : Parkinson et al. (1996)  
Validation Pipeline (wwPDB-VP) : 2.49

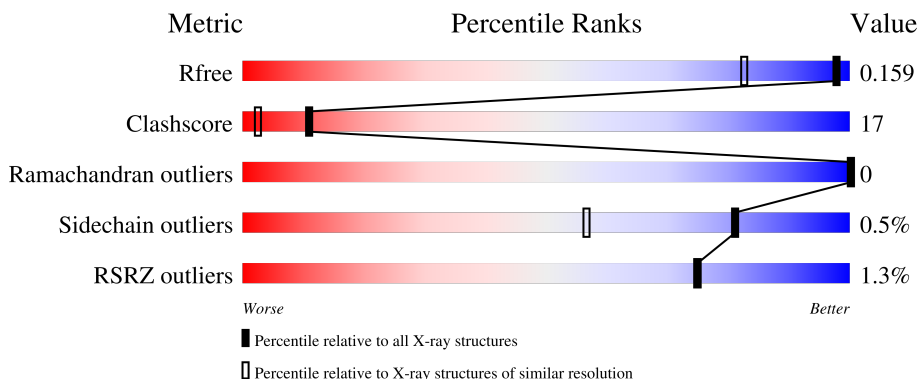
# 1 Overall quality at a glance

The following experimental techniques were used to determine the structure:

*X-RAY DIFFRACTION*

The reported resolution of this entry is 1.25 Å.

Percentile scores (ranging between 0-100) for global validation metrics of the entry are shown in the following graphic. The table shows the number of entries on which the scores are based.



Metric	Whole archive (#Entries)	Similar resolution (#Entries, resolution range(Å))
$R_{free}$	180053	1693 (1.28-1.24)
Clashscore	190562	1730 (1.28-1.24)
Ramachandran outliers	187476	1695 (1.28-1.24)
Sidechain outliers	187428	1694 (1.28-1.24)
RSRZ outliers	180081	1693 (1.28-1.24)

The table below summarises the geometric issues observed across the polymeric chains and their fit to the electron density. The red, orange, yellow and green segments of the lower bar indicate the fraction of residues that contain outliers for  $\geq 3$ , 2, 1 and 0 types of geometric quality criteria respectively. A grey segment represents the fraction of residues that are not modelled. The numeric value for each fraction is indicated below the corresponding segment, with a dot representing fractions  $\leq 5\%$ . The upper red bar (where present) indicates the fraction of residues that have poor fit to the electron density. The numeric value is given above the bar.

Mol	Chain	Length	Quality of chain
1	A	223	

The following table lists non-polymeric compounds, carbohydrate monomers and non-standard residues in protein, DNA, RNA chains that are outliers for geometric or electron-density-fit criteria:

Mol	Type	Chain	Res	Chirality	Geometry	Clashes	Electron density
2	SO4	A	1248	-	-	X	-

*Continued on next page...*

*Continued from previous page...*

Mol	Type	Chain	Res	Chirality	Geometry	Clashes	Electron density
6	SW1	A	1256	-	-	X	-

## 2 Entry composition [i](#)

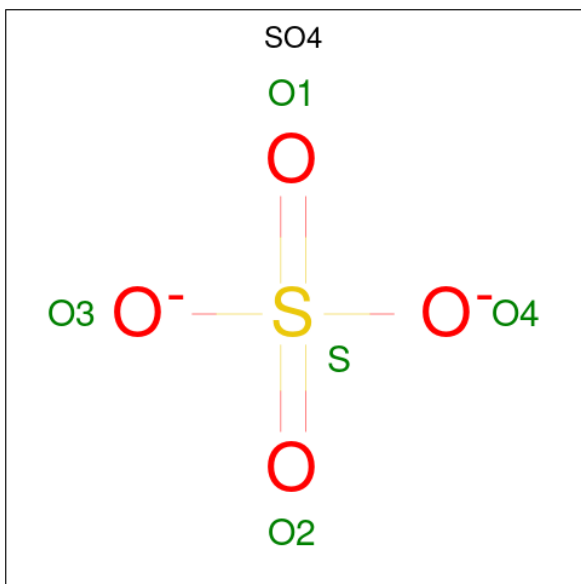
There are 7 unique types of molecules in this entry. The entry contains 2349 atoms, of which 0 are hydrogens and 0 are deuteriums.

In the tables below, the ZeroOcc column contains the number of atoms modelled with zero occupancy, the AltConf column contains the number of residues with at least one atom in alternate conformation and the Trace column contains the number of residues modelled with at most 2 atoms.

- Molecule 1 is a protein called CATIONIC TRYPSIN.

Mol	Chain	Residues	Atoms					ZeroOcc	AltConf	Trace
			Total	C	N	O	S			
1	A	223	1940	1202	333	390	15	0	40	0

- Molecule 2 is SULFATE ION (CCD ID: SO4) (formula: O<sub>4</sub>S).

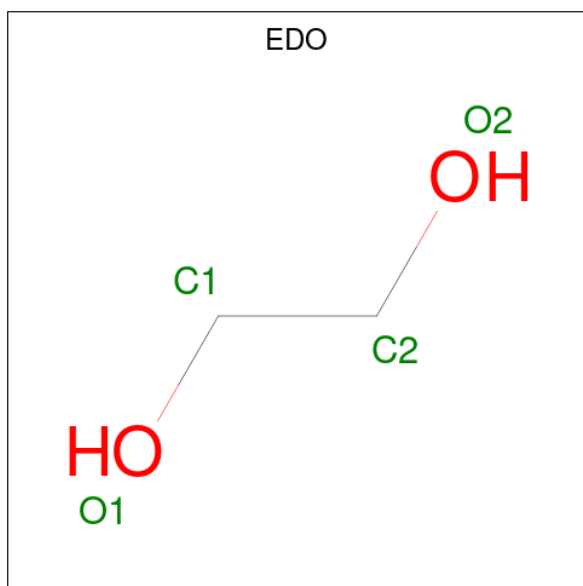


Mol	Chain	Residues	Atoms			ZeroOcc	AltConf
			Total	O	S		
2	A	1	5	4	1	0	0
2	A	1	5	4	1	0	0
2	A	1	5	4	1	0	0

- Molecule 3 is CALCIUM ION (CCD ID: CA) (formula: Ca).

Mol	Chain	Residues	Atoms	ZeroOcc	AltConf
3	A	1	Total Ca 1 1	0	0

- Molecule 4 is 1,2-ETHANEDIOL (CCD ID: EDO) (formula: C<sub>2</sub>H<sub>6</sub>O<sub>2</sub>).



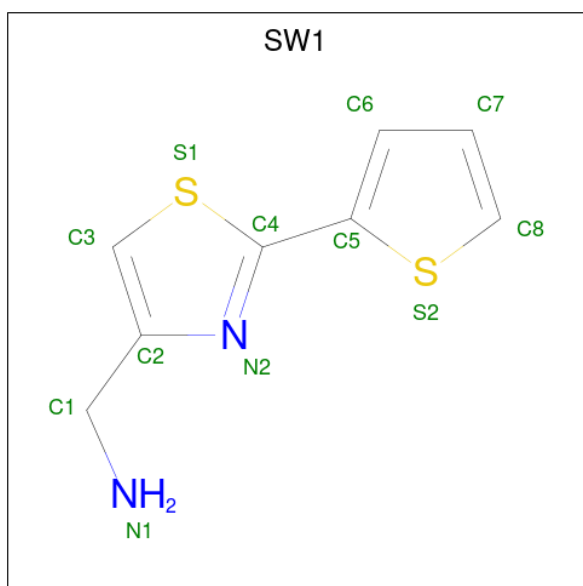
Mol	Chain	Residues	Atoms	ZeroOcc	AltConf
4	A	1	Total C O 4 2 2	0	0
4	A	1	Total C O 4 2 2	0	0
4	A	1	Total C O 4 2 2	0	0
4	A	1	Total C O 4 2 2	0	0

- Molecule 5 is DIMETHYL SULFOXIDE (CCD ID: DMS) (formula: C<sub>2</sub>H<sub>6</sub>OS).



Mol	Chain	Residues	Atoms				ZeroOcc	AltConf
5	A	1	Total	C	O	S	0	0
			4	2	1	1		
5	A	1	Total	C	O	S	0	0
			4	2	1	1		

- Molecule 6 is 1-[2-(thiophen-2-yl)-1,3-thiazol-4-yl]methanamine (CCD ID: SW1) (formula:  $C_8H_8N_2S_2$ ).



Mol	Chain	Residues	Atoms				ZeroOcc	AltConf
6	A	1	Total	C	N	S	0	0
			12	8	2	2		

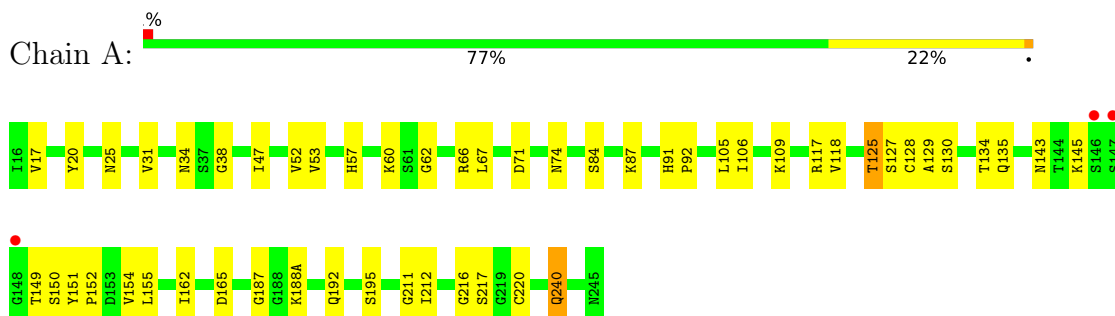
- Molecule 7 is water.

Mol	Chain	Residues	Atoms		ZeroOcc	AltConf
7	A	357	Total 357	O 357	0	0

### 3 Residue-property plots [i](#)

These plots are drawn for all protein, RNA, DNA and oligosaccharide chains in the entry. The first graphic for a chain summarises the proportions of the various outlier classes displayed in the second graphic. The second graphic shows the sequence view annotated by issues in geometry and electron density. Residues are color-coded according to the number of geometric quality criteria for which they contain at least one outlier: green = 0, yellow = 1, orange = 2 and red = 3 or more. A red dot above a residue indicates a poor fit to the electron density ( $RSRZ > 2$ ). Stretches of 2 or more consecutive residues without any outlier are shown as a green connector. Residues present in the sample, but not in the model, are shown in grey.

- Molecule 1: CATIONIC TRYPSIN



## 4 Data and refinement statistics

Property	Value	Source
Space group	P 21 21 21	Depositor
Cell constants a, b, c, $\alpha$ , $\beta$ , $\gamma$	54.51Å 58.47Å 66.69Å 90.00° 90.00° 90.00°	Depositor
Resolution (Å)	66.69 – 1.25 43.97 – 1.25	Depositor EDS
% Data completeness (in resolution range)	95.3 (66.69-1.25) 95.4 (43.97-1.25)	Depositor EDS
$R_{merge}$	0.05	Depositor
$R_{sym}$	(Not available)	Depositor
$\langle I/\sigma(I) \rangle$ <sup>1</sup>	7.21 (at 1.25Å)	Xtrriage
Refinement program	REFMAC 5.6.0117	Depositor
R, $R_{free}$	0.142 , 0.161 0.140 , 0.159	Depositor DCC
$R_{free}$ test set	2886 reflections (5.07%)	wwPDB-VP
Wilson B-factor (Å <sup>2</sup> )	6.8	Xtrriage
Anisotropy	0.112	Xtrriage
Bulk solvent $k_{sol}$ (e/Å <sup>3</sup> ), $B_{sol}$ (Å <sup>2</sup> )	0.37 , 44.0	EDS
L-test for twinning <sup>2</sup>	$\langle  L  \rangle = 0.48$ , $\langle L^2 \rangle = 0.32$	Xtrriage
Estimated twinning fraction	No twinning to report.	Xtrriage
$F_o, F_c$ correlation	0.97	EDS
Total number of atoms	2349	wwPDB-VP
Average B, all atoms (Å <sup>2</sup> )	8.0	wwPDB-VP

Xtrriage's analysis on translational NCS is as follows: *The largest off-origin peak in the Patterson function is 7.94% of the height of the origin peak. No significant pseudotranslation is detected.*

<sup>1</sup>Intensities estimated from amplitudes.

<sup>2</sup>Theoretical values of  $\langle |L| \rangle$ ,  $\langle L^2 \rangle$  for acentric reflections are 0.5, 0.333 respectively for untwinned datasets, and 0.375, 0.2 for perfectly twinned datasets.

## 5 Model quality [i](#)

### 5.1 Standard geometry [i](#)

Bond lengths and bond angles in the following residue types are not validated in this section: DMS, CA, EDO, SW1, SO4

The Z score for a bond length (or angle) is the number of standard deviations the observed value is removed from the expected value. A bond length (or angle) with  $|Z| > 5$  is considered an outlier worth inspection. RMSZ is the root-mean-square of all Z scores of the bond lengths (or angles).

Mol	Chain	Bond lengths		Bond angles	
		RMSZ	# Z  >5	RMSZ	# Z  >5
1	A	1.53	11/1992 (0.6%)	1.18	2/2692 (0.1%)

Chiral center outliers are detected by calculating the chiral volume of a chiral center and verifying if the center is modelled as a planar moiety or with the opposite hand. A planarity outlier is detected by checking planarity of atoms in a peptide group, atoms in a mainchain group or atoms of a sidechain that are expected to be planar.

Mol	Chain	#Chirality outliers	#Planarity outliers
1	A	0	1

All (11) bond length outliers are listed below:

Mol	Chain	Res	Type	Atoms	Z	Observed(Å)	Ideal(Å)
1	A	217[A]	SER	C-N	12.29	1.52	1.33
1	A	217[B]	SER	C-N	12.29	1.52	1.33
1	A	57	HIS	CE1-NE2	7.84	1.40	1.32
1	A	62	GLY	N-CA	6.62	1.54	1.45
1	A	152	PRO	CA-C	6.35	1.60	1.52
1	A	128	CYS	C-O	5.70	1.30	1.23
1	A	211	GLY	CA-C	-5.44	1.47	1.52
1	A	220	CYS	CA-C	-5.32	1.46	1.52
1	A	150	SER	C-O	5.18	1.30	1.23
1	A	125	THR	C-N	5.03	1.39	1.33
1	A	118	VAL	C-O	5.03	1.29	1.24

All (2) bond angle outliers are listed below:

Mol	Chain	Res	Type	Atoms	Z	Observed(°)	Ideal(°)
1	A	125	THR	O-C-N	-6.79	113.53	122.42
1	A	127	SER	O-C-N	5.47	129.48	123.25

There are no chirality outliers.

All (1) planarity outliers are listed below:

Mol	Chain	Res	Type	Group
1	A	66	ARG	Sidechain

## 5.2 Too-close contacts [i](#)

In the following table, the Non-H and H(model) columns list the number of non-hydrogen atoms and hydrogen atoms in the chain respectively. The H(added) column lists the number of hydrogen atoms added and optimized by MolProbity. The Clashes column lists the number of clashes within the asymmetric unit, whereas Symm-Clashes lists symmetry-related clashes.

Mol	Chain	Non-H	H(model)	H(added)	Clashes	Symm-Clashes
1	A	1940	0	1893	55	0
2	A	15	0	0	2	0
3	A	1	0	0	0	0
4	A	16	0	24	5	0
5	A	8	0	12	3	0
6	A	12	0	8	6	0
7	A	357	0	0	25	4
All	All	2349	0	1937	66	4

The all-atom clashscore is defined as the number of clashes found per 1000 atoms (including hydrogen atoms). The all-atom clashscore for this structure is 17.

All (66) close contacts within the same asymmetric unit are listed below, sorted by their clash magnitude.

Atom-1	Atom-2	Interatomic distance (Å)	Clash overlap (Å)
1:A:87[B]:LYS:HE3	7:A:2159:HOH:O	1.06	1.23
1:A:74[A]:ASN:OD1	4:A:1252:EDO:O2	1.65	1.12
1:A:195[B]:SER:HB2	7:A:2058:HOH:O	1.55	1.05
1:A:165[B]:ASP:OD1	7:A:2270:HOH:O	1.83	0.95
6:A:1256:SW1:N2	7:A:2331:HOH:O	2.01	0.92
1:A:25:ASN:HD22	1:A:117[A]:ARG:HH11	1.15	0.89
4:A:1253:EDO:C2	7:A:2223:HOH:O	2.18	0.89
1:A:31[A]:VAL:CG1	1:A:67[A]:LEU:CD2	2.50	0.89
1:A:31[A]:VAL:CG1	1:A:67[A]:LEU:HD23	2.04	0.87
1:A:31[A]:VAL:HG11	1:A:67[A]:LEU:CD2	2.08	0.83
1:A:117[A]:ARG:NH2	7:A:2205:HOH:O	2.12	0.79
1:A:240[B]:GLN:HG3	7:A:2348:HOH:O	1.83	0.77
1:A:31[A]:VAL:HG12	1:A:67[A]:LEU:CD2	2.13	0.77

*Continued on next page...*

*Continued from previous page...*

Atom-1	Atom-2	Interatomic distance (Å)	Clash overlap (Å)
1:A:31[A]:VAL:HG12	1:A:67[A]:LEU:HD23	1.66	0.75
2:A:1248:SO4:O4	6:A:1256:SW1:H6	1.89	0.73
1:A:154[B]:VAL:HG21	7:A:2124:HOH:O	1.90	0.71
1:A:60[B]:LYS:CE	7:A:2052:HOH:O	2.39	0.69
1:A:53[B]:VAL:HG12	1:A:105:LEU:CD2	2.23	0.68
1:A:84:SER:HB2	1:A:109[B]:LYS:HD2	1.75	0.68
1:A:130:SER:O	1:A:134[B]:THR:HG22	1.95	0.67
1:A:145[B]:LYS:HE2	7:A:2244:HOH:O	1.95	0.66
1:A:145[B]:LYS:HE3	7:A:2243:HOH:O	1.96	0.64
5:A:1255:DMS:H23	7:A:2033:HOH:O	1.98	0.63
1:A:53[B]:VAL:HG12	1:A:105:LEU:HD23	1.80	0.62
4:A:1253:EDO:H22	7:A:2223:HOH:O	1.93	0.60
1:A:154[B]:VAL:HG22	1:A:155:LEU:N	2.17	0.60
1:A:31[A]:VAL:CG1	1:A:67[A]:LEU:HD22	2.34	0.57
2:A:1248:SO4:S	6:A:1256:SW1:H6	2.44	0.56
1:A:34:ASN:ND2	1:A:38:GLY:H	2.03	0.56
1:A:135[B]:GLN:HG3	7:A:2234:HOH:O	2.05	0.56
1:A:71:ASP:CG	1:A:154[B]:VAL:HG23	2.31	0.55
1:A:149[A]:THR:HG22	7:A:2250:HOH:O	2.07	0.54
1:A:149[B]:THR:HG23	1:A:151:TYR:CE1	2.43	0.54
1:A:31[A]:VAL:HG12	1:A:67[A]:LEU:HD22	1.88	0.54
1:A:192[C]:GLN:HG3	6:A:1256:SW1:S2	2.49	0.54
1:A:149[A]:THR:O	1:A:149[A]:THR:HG23	2.08	0.53
1:A:47:ILE:HD13	1:A:53[C]:VAL:CG2	2.40	0.52
1:A:53[B]:VAL:HG12	1:A:105:LEU:HD21	1.92	0.52
1:A:60[B]:LYS:NZ	7:A:2052:HOH:O	2.33	0.51
1:A:134[B]:THR:CG2	1:A:162:ILE:HD12	2.41	0.51
1:A:143:ASN:HD22	1:A:192[C]:GLN:NE2	2.08	0.50
5:A:1255:DMS:H21	7:A:2357:HOH:O	2.13	0.48
1:A:125:THR:HG23	7:A:2214:HOH:O	2.14	0.46
1:A:187:GLY:C	7:A:2307:HOH:O	2.58	0.45
1:A:91:HIS:CG	1:A:92[A]:PRO:HD2	2.52	0.45
4:A:1253:EDO:O2	7:A:2223:HOH:O	2.08	0.45
1:A:129:ALA:HB1	1:A:134[B]:THR:HG21	1.99	0.44
1:A:145[B]:LYS:CE	7:A:2243:HOH:O	2.58	0.44
1:A:17:VAL:O	1:A:188(A)[A]:LYS:HA	2.17	0.44
1:A:212[B]:ILE:HD12	1:A:212[B]:ILE:HG23	1.73	0.42
1:A:149[B]:THR:CG2	1:A:151:TYR:HE1	2.33	0.42
1:A:25:ASN:ND2	1:A:117[A]:ARG:HH11	1.98	0.42
1:A:53[B]:VAL:CG1	1:A:105:LEU:CD2	2.97	0.41
6:A:1256:SW1:C5	7:A:2331:HOH:O	2.68	0.41

*Continued on next page...*

Continued from previous page...

Atom-1	Atom-2	Interatomic distance (Å)	Clash overlap (Å)
1:A:20:TYR:OH	5:A:1255:DMS:C1	2.69	0.41
1:A:53[B]:VAL:CG1	1:A:105:LEU:HD23	2.48	0.41
1:A:105:LEU:O	1:A:106[B]:ILE:HD13	2.21	0.41
1:A:145[B]:LYS:HA	1:A:145[B]:LYS:HD3	1.46	0.41
1:A:71:ASP:OD2	1:A:154[B]:VAL:HG23	2.21	0.41
4:A:1252:EDO:H21	7:A:2047:HOH:O	2.21	0.41
1:A:149[B]:THR:CG2	1:A:151:TYR:CE1	3.04	0.40
6:A:1256:SW1:S2	7:A:2331:HOH:O	2.62	0.40
1:A:52:VAL:HB	1:A:106[B]:ILE:HB	2.03	0.40
1:A:106[B]:ILE:HD13	1:A:106[B]:ILE:HA	1.73	0.40
1:A:216[B]:GLY:HA3	7:A:2287:HOH:O	2.21	0.40

All (4) symmetry-related close contacts are listed below. The label for Atom-2 includes the symmetry operator and encoded unit-cell translations to be applied.

Atom-1	Atom-2	Interatomic distance (Å)	Clash overlap (Å)
7:A:2113:HOH:O	7:A:2251:HOH:O[4_445]	1.45	0.75
7:A:2191:HOH:O	7:A:2256:HOH:O[4_445]	1.78	0.42
7:A:2013:HOH:O	7:A:2182:HOH:O[3_545]	1.95	0.25
7:A:2054:HOH:O	7:A:2161:HOH:O[4_545]	2.17	0.03

## 5.3 Torsion angles [i](#)

### 5.3.1 Protein backbone [i](#)

In the following table, the Percentiles column shows the percent Ramachandran outliers of the chain as a percentile score with respect to all X-ray entries followed by that with respect to entries of similar resolution.

The Analysed column shows the number of residues for which the backbone conformation was analysed, and the total number of residues.

Mol	Chain	Analysed	Favoured	Allowed	Outliers	Percentiles
1	A	264/223 (118%)	260 (98%)	4 (2%)	0	<b>100</b>   <b>100</b>

There are no Ramachandran outliers to report.

### 5.3.2 Protein sidechains [i](#)

In the following table, the Percentiles column shows the percent sidechain outliers of the chain as a percentile score with respect to all X-ray entries followed by that with respect to entries of similar resolution.

The Analysed column shows the number of residues for which the sidechain conformation was analysed, and the total number of residues.

Mol	Chain	Analysed	Rotameric	Outliers	Percentiles
1	A	226/184 (123%)	224 (99%)	2 (1%)	70 39

All (2) residues with a non-rotameric sidechain are listed below:

Mol	Chain	Res	Type
1	A	240[A]	GLN
1	A	240[B]	GLN

Sometimes sidechains can be flipped to improve hydrogen bonding and reduce clashes. All (4) such sidechains are listed below:

Mol	Chain	Res	Type
1	A	25	ASN
1	A	34	ASN
1	A	79	ASN
1	A	223	ASN

### 5.3.3 RNA [i](#)

There are no RNA molecules in this entry.

## 5.4 Non-standard residues in protein, DNA, RNA chains [i](#)

There are no non-standard protein/DNA/RNA residues in this entry.

### 5.5 Carbohydrates [i](#)

There are no oligosaccharides in this entry.

### 5.6 Ligand geometry [i](#)

Of 11 ligands modelled in this entry, 1 is monoatomic - leaving 10 for Mogul analysis.

In the following table, the Counts columns list the number of bonds (or angles) for which Mogul statistics could be retrieved, the number of bonds (or angles) that are observed in the model and the number of bonds (or angles) that are defined in the Chemical Component Dictionary. The Link column lists molecule types, if any, to which the group is linked. The Z score for a bond length (or angle) is the number of standard deviations the observed value is removed from the expected value. A bond length (or angle) with  $|Z| > 2$  is considered an outlier worth inspection. RMSZ is the root-mean-square of all Z scores of the bond lengths (or angles).

Mol	Type	Chain	Res	Link	Bond lengths			Bond angles		
					Counts	RMSZ	# Z  > 2	Counts	RMSZ	# Z  > 2
6	SW1	A	1256	-	13,13,13	1.07	1 (7%)	14,17,17	2.73	6 (42%)
4	EDO	A	1253	-	3,3,3	0.77	0	2,2,2	0.82	0
5	DMS	A	1255	-	3,3,3	0.32	0	3,3,3	0.78	0
4	EDO	A	1250	-	3,3,3	1.02	0	2,2,2	0.89	0
2	SO4	A	1248	-	4,4,4	0.53	0	6,6,6	0.84	0
2	SO4	A	1247	-	4,4,4	0.50	0	6,6,6	1.20	0
4	EDO	A	1252	-	3,3,3	1.07	0	2,2,2	0.30	0
4	EDO	A	1251	-	3,3,3	1.05	0	2,2,2	0.14	0
5	DMS	A	1254	-	3,3,3	0.82	0	3,3,3	0.71	0
2	SO4	A	1246	-	4,4,4	0.53	0	6,6,6	1.17	1 (16%)

In the following table, the Chirals column lists the number of chiral outliers, the number of chiral centers analysed, the number of these observed in the model and the number defined in the Chemical Component Dictionary. Similar counts are reported in the Torsion and Rings columns. '2' means no outliers of that kind were identified.

Mol	Type	Chain	Res	Link	Chirals	Torsions	Rings
6	SW1	A	1256	-	-	1/5/6/6	0/2/2/2
4	EDO	A	1253	-	-	1/1/1/1	-
4	EDO	A	1250	-	-	0/1/1/1	-
4	EDO	A	1252	-	-	0/1/1/1	-
4	EDO	A	1251	-	-	0/1/1/1	-

All (1) bond length outliers are listed below:

Mol	Chain	Res	Type	Atoms	Z	Observed(Å)	Ideal(Å)
6	A	1256	SW1	C4-S1	-2.27	1.69	1.73

All (7) bond angle outliers are listed below:

Mol	Chain	Res	Type	Atoms	Z	Observed(°)	Ideal(°)
6	A	1256	SW1	C5-C4-S1	5.07	126.51	120.50
6	A	1256	SW1	C3-C2-N2	-4.97	107.40	115.12
6	A	1256	SW1	C4-C5-S2	4.60	126.62	119.80

*Continued on next page...*

Continued from previous page...

Mol	Chain	Res	Type	Atoms	Z	Observed(°)	Ideal(°)
6	A	1256	SW1	C2-C1-N1	-2.78	106.95	113.28
6	A	1256	SW1	S1-C4-N2	-2.58	111.20	114.49
6	A	1256	SW1	C2-C3-S1	2.52	113.97	110.59
2	A	1246	SO4	O4-S-O1	-2.41	96.98	109.56

There are no chirality outliers.

All (2) torsion outliers are listed below:

Mol	Chain	Res	Type	Atoms
6	A	1256	SW1	N1-C1-C2-N2
4	A	1253	EDO	O1-C1-C2-O2

There are no ring outliers.

5 monomers are involved in 14 short contacts:

Mol	Chain	Res	Type	Clashes	Symm-Clashes
6	A	1256	SW1	6	0
4	A	1253	EDO	3	0
5	A	1255	DMS	3	0
2	A	1248	SO4	2	0
4	A	1252	EDO	2	0

## 5.7 Other polymers [i](#)

There are no such residues in this entry.

## 5.8 Polymer linkage issues [i](#)

The following chains have linkage breaks:

Mol	Chain	Number of breaks
1	A	1

All chain breaks are listed below:

Model	Chain	Residue-1	Atom-1	Residue-2	Atom-2	Distance (Å)
1	A	217[A]:SER	C	219:GLY	N	1.09

## 6 Fit of model and data [i](#)

### 6.1 Protein, DNA and RNA chains [i](#)

In the following table, the column labelled '#RSRZ > 2' contains the number (and percentage) of RSRZ outliers, followed by percent RSRZ outliers for the chain as percentile scores relative to all X-ray entries and entries of similar resolution. The OWAB column contains the minimum, median, 95<sup>th</sup> percentile and maximum values of the occupancy-weighted average B-factor per residue. The column labelled 'Q < 0.9' lists the number of (and percentage) of residues with an average occupancy less than 0.9.

Mol	Chain	Analysed	<RSRZ>	#RSRZ>2	OWAB(Å <sup>2</sup> )	Q<0.9
1	A	223/223 (100%)	-0.53	3 (1%) 75 75	1, 5, 11, 23	41 (18%)

All (3) RSRZ outliers are listed below:

Mol	Chain	Res	Type	RSRZ
1	A	147	SER	4.1
1	A	146	SER	3.3
1	A	148	GLY	2.1

### 6.2 Non-standard residues in protein, DNA, RNA chains [i](#)

There are no non-standard protein/DNA/RNA residues in this entry.

### 6.3 Carbohydrates [i](#)

There are no oligosaccharides in this entry.

### 6.4 Ligands [i](#)

In the following table, the Atoms column lists the number of modelled atoms in the group and the number defined in the chemical component dictionary. The B-factors column lists the minimum, median, 95<sup>th</sup> percentile and maximum values of B factors of atoms in the group. The column labelled 'Q < 0.9' lists the number of atoms with occupancy less than 0.9.

Mol	Type	Chain	Res	Atoms	RSCC	RSR	B-factors(Å <sup>2</sup> )	Q<0.9
5	DMS	A	1255	4/4	0.79	0.16	12,13,22,28	4
2	SO4	A	1247	5/5	0.80	0.21	17,23,29,32	5
2	SO4	A	1248	5/5	0.91	0.14	14,14,16,16	5
4	EDO	A	1251	4/4	0.93	0.09	6,9,11,13	0

*Continued on next page...*

*Continued from previous page...*

Mol	Type	Chain	Res	Atoms	RSCC	RSR	B-factors( $\text{\AA}^2$ )	Q<0.9
4	EDO	A	1250	4/4	0.93	0.10	14,15,18,18	0
4	EDO	A	1252	4/4	0.94	0.10	9,12,12,17	0
6	SW1	A	1256	12/12	0.94	0.11	8,12,16,17	12
2	SO4	A	1246	5/5	0.95	0.09	12,12,16,17	5
4	EDO	A	1253	4/4	0.95	0.09	13,21,24,26	0
5	DMS	A	1254	4/4	0.96	0.10	5,11,13,15	4
3	CA	A	1249	1/1	1.00	0.02	4,4,4,4	0

## 6.5 Other polymers [\(i\)](#)

There are no such residues in this entry.