



Full wwPDB X-ray Structure Validation Report ⓘ

Mar 5, 2026 – 08:15 PM UTC

PDB ID : 5AEE / pdb_00005aee
Title : A bacterial protein structure in glycoside hydrolase family 31
Authors : Jin, Y.; Speciale, G.; Davies, G.J.; Williams, S.J.; Goddard-Borger, E.D.
Deposited on : 2015-08-28
Resolution : 1.85 Å(reported)

This is a Full wwPDB X-ray Structure Validation Report for a publicly released PDB entry.

We welcome your comments at validation@mail.wwpdb.org

A user guide is available at

<https://www.wwpdb.org/validation/2017/XrayValidationReportHelp>

with specific help available everywhere you see the ⓘ symbol.

The types of validation reports are described at

<http://www.wwpdb.org/validation/2017/FAQs#types>.

The following versions of software and data (see [references ⓘ](#)) were used in the production of this report:

MolProbity : 4-5-2 with Phenix2.0
Mogul : 2022.3.0, CSD as543be (2022)
Xtrriage (Phenix) : 2.0
EDS : 3.0
Buster-report : wwPDB partial adaption of 1.1.7 (2018)
Percentile statistics : 20250101.v01 (using entries in the PDB archive January 1st 2025)
CCP4 : 9.0.010 (Gargrove)
Density-Fitness : 1.0.12
Ideal geometry (proteins) : Engh & Huber (2001)
Ideal geometry (DNA, RNA) : Parkinson et al. (1996)
Validation Pipeline (wwPDB-VP) : 2.49

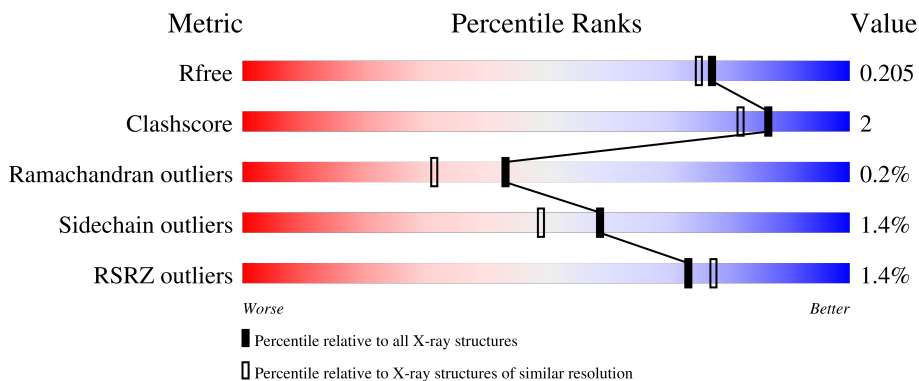
1 Overall quality at a glance

The following experimental techniques were used to determine the structure:

X-RAY DIFFRACTION

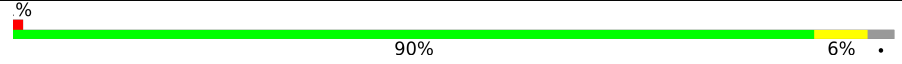
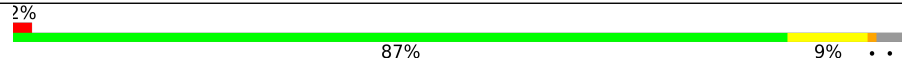
The reported resolution of this entry is 1.85 Å.

Percentile scores (ranging between 0-100) for global validation metrics of the entry are shown in the following graphic. The table shows the number of entries on which the scores are based.



Metric	Whole archive (#Entries)	Similar resolution (#Entries, resolution range(Å))
R_{free}	180053	3428 (1.86-1.86)
Clashscore	190562	3579 (1.86-1.86)
Ramachandran outliers	187476	3553 (1.86-1.86)
Sidechain outliers	187428	3553 (1.86-1.86)
RSRZ outliers	180081	3429 (1.86-1.86)

The table below summarises the geometric issues observed across the polymeric chains and their fit to the electron density. The red, orange, yellow and green segments of the lower bar indicate the fraction of residues that contain outliers for ≥ 3 , 2, 1 and 0 types of geometric quality criteria respectively. A grey segment represents the fraction of residues that are not modelled. The numeric value for each fraction is indicated below the corresponding segment, with a dot representing fractions $\leq 5\%$. The upper red bar (where present) indicates the fraction of residues that have poor fit to the electron density. The numeric value is given above the bar.

Mol	Chain	Length	Quality of chain
1	A	686	 90% 6% .
1	B	686	 87% 9% ..

2 Entry composition

There are 6 unique types of molecules in this entry. The entry contains 11403 atoms, of which 0 are hydrogens and 0 are deuteriums.

In the tables below, the ZeroOcc column contains the number of atoms modelled with zero occupancy, the AltConf column contains the number of residues with at least one atom in alternate conformation and the Trace column contains the number of residues modelled with at most 2 atoms.

- Molecule 1 is a protein called ALPHA-GLUCOSIDASE YIHQ.

Mol	Chain	Residues	Atoms					ZeroOcc	AltConf	Trace
			Total	C	N	O	S			
1	A	667	Total	C	N	O	S	0	0	0
			5365	3435	900	1002	28			
1	B	668	Total	C	N	O	S	0	0	0
			5376	3442	901	1005	28			

There are 18 discrepancies between the modelled and reference sequences:

Chain	Residue	Modelled	Actual	Comment	Reference
A	679	LEU	-	expression tag	UNP P32138
A	680	GLU	-	expression tag	UNP P32138
A	681	HIS	-	expression tag	UNP P32138
A	682	HIS	-	expression tag	UNP P32138
A	683	HIS	-	expression tag	UNP P32138
A	684	HIS	-	expression tag	UNP P32138
A	685	HIS	-	expression tag	UNP P32138
A	686	HIS	-	expression tag	UNP P32138
A	472	ASN	ASP	engineered mutation	UNP P32138
B	679	LEU	-	expression tag	UNP P32138
B	680	GLU	-	expression tag	UNP P32138
B	681	HIS	-	expression tag	UNP P32138
B	682	HIS	-	expression tag	UNP P32138
B	683	HIS	-	expression tag	UNP P32138
B	684	HIS	-	expression tag	UNP P32138
B	685	HIS	-	expression tag	UNP P32138
B	686	HIS	-	expression tag	UNP P32138
B	472	ASN	ASP	engineered mutation	UNP P32138

- Molecule 2 is CALCIUM ION (CCD ID: CA) (formula: Ca).

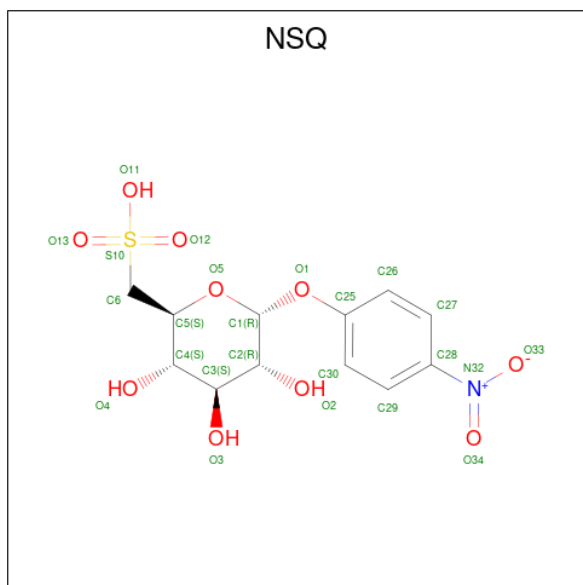
Mol	Chain	Residues	Atoms		ZeroOcc	AltConf
2	A	2	Total	Ca	0	0
			2	2		

Continued on next page...

Continued from previous page...

Mol	Chain	Residues	Atoms		ZeroOcc	AltConf
2	B	1	Total	Ca	0	0
			1	1		

- Molecule 3 is 4-nitrophenyl alpha-D-6-sulfoquinovoside (CCD ID: NSQ) (formula: $C_{12}H_{15}NO_{10}S$).



Mol	Chain	Residues	Atoms					ZeroOcc	AltConf
			Total	C	N	O	S		
3	A	1	24	12	1	10	1	0	0
3	B	1	24	12	1	10	1	0	0

- Molecule 4 is (4S)-2-METHYL-2,4-PENTANEDIOL (CCD ID: MPD) (formula: $C_6H_{14}O_2$).



Mol	Chain	Residues	Atoms	ZeroOcc	AltConf
4	B	1	Total C O 8 6 2	0	0

- Molecule 5 is CHLORIDE ION (CCD ID: CL) (formula: Cl).

Mol	Chain	Residues	Atoms	ZeroOcc	AltConf
5	B	1	Total Cl 1 1	0	0

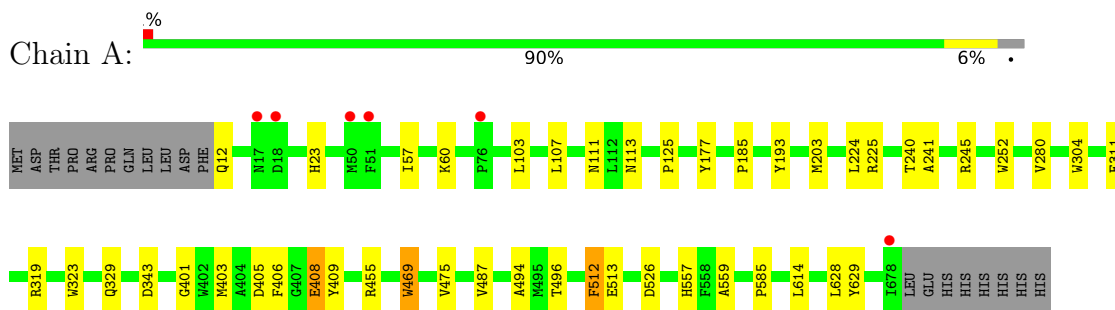
- Molecule 6 is water.

Mol	Chain	Residues	Atoms	ZeroOcc	AltConf
6	A	312	Total O 312 312	0	0
6	B	290	Total O 290 290	0	0

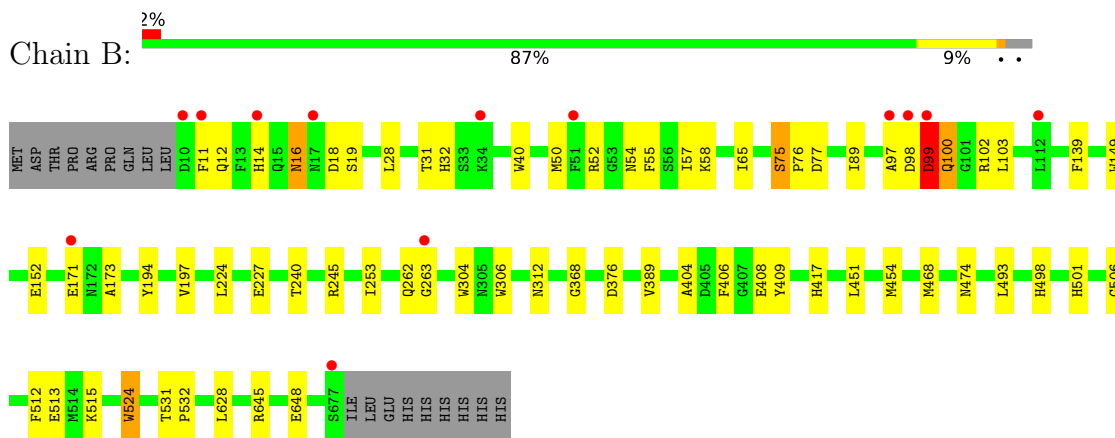
3 Residue-property plots [i](#)

These plots are drawn for all protein, RNA, DNA and oligosaccharide chains in the entry. The first graphic for a chain summarises the proportions of the various outlier classes displayed in the second graphic. The second graphic shows the sequence view annotated by issues in geometry and electron density. Residues are color-coded according to the number of geometric quality criteria for which they contain at least one outlier: green = 0, yellow = 1, orange = 2 and red = 3 or more. A red dot above a residue indicates a poor fit to the electron density ($RSRZ > 2$). Stretches of 2 or more consecutive residues without any outlier are shown as a green connector. Residues present in the sample, but not in the model, are shown in grey.

- Molecule 1: ALPHA-GLUCOSIDASE YIHQ



- Molecule 1: ALPHA-GLUCOSIDASE YIHQ



4 Data and refinement statistics

Property	Value	Source
Space group	P 1 21 1	Depositor
Cell constants a, b, c, α , β , γ	77.96Å 107.62Å 103.30Å 90.00° 107.85° 90.00°	Depositor
Resolution (Å)	53.81 – 1.85 53.81 – 1.85	Depositor EDS
% Data completeness (in resolution range)	87.5 (53.81-1.85) 87.5 (53.81-1.85)	Depositor EDS
R_{merge}	0.05	Depositor
R_{sym}	(Not available)	Depositor
$\langle I/\sigma(I) \rangle$ ¹	1.52 (at 1.86Å)	Xtrriage
Refinement program	REFMAC 5.8.0131	Depositor
R, R_{free}	0.163 , 0.201 0.171 , 0.205	Depositor DCC
R_{free} test set	6052 reflections (5.00%)	wwPDB-VP
Wilson B-factor (Å ²)	27.6	Xtrriage
Anisotropy	0.095	Xtrriage
Bulk solvent k_{sol} (e/Å ³), B_{sol} (Å ²)	0.35 , 39.0	EDS
L-test for twinning ²	$\langle L \rangle = 0.48$, $\langle L^2 \rangle = 0.31$	Xtrriage
Estimated twinning fraction	No twinning to report.	Xtrriage
F_o, F_c correlation	0.97	EDS
Total number of atoms	11403	wwPDB-VP
Average B, all atoms (Å ²)	32.0	wwPDB-VP

Xtrriage's analysis on translational NCS is as follows: *The largest off-origin peak in the Patterson function is 3.41% of the height of the origin peak. No significant pseudotranslation is detected.*

¹Intensities estimated from amplitudes.

²Theoretical values of $\langle |L| \rangle$, $\langle L^2 \rangle$ for acentric reflections are 0.5, 0.333 respectively for untwinned datasets, and 0.375, 0.2 for perfectly twinned datasets.

5 Model quality [i](#)

5.1 Standard geometry [i](#)

Bond lengths and bond angles in the following residue types are not validated in this section: MPD, NSQ, CA, CL

The Z score for a bond length (or angle) is the number of standard deviations the observed value is removed from the expected value. A bond length (or angle) with $|Z| > 5$ is considered an outlier worth inspection. RMSZ is the root-mean-square of all Z scores of the bond lengths (or angles).

Mol	Chain	Bond lengths		Bond angles	
		RMSZ	# Z >5	RMSZ	# Z >5
1	A	1.20	5/5525 (0.1%)	1.04	8/7510 (0.1%)
1	B	1.32	12/5537 (0.2%)	1.10	9/7526 (0.1%)
All	All	1.26	17/11062 (0.2%)	1.07	17/15036 (0.1%)

All (17) bond length outliers are listed below:

Mol	Chain	Res	Type	Atoms	Z	Observed(Å)	Ideal(Å)
1	B	263	GLY	N-CA	12.46	1.63	1.45
1	B	513	GLU	N-CA	7.16	1.55	1.46
1	B	417	HIS	N-CA	-6.91	1.38	1.46
1	B	493	LEU	CA-C	-6.50	1.44	1.52
1	B	501	HIS	CA-CB	-6.42	1.42	1.53
1	B	263	GLY	CA-C	6.05	1.60	1.51
1	B	16	ASN	CA-C	6.04	1.60	1.52
1	B	515	LYS	C-O	-5.71	1.17	1.23
1	B	389	VAL	C-O	-5.45	1.18	1.24
1	B	474	ASN	N-CA	-5.38	1.39	1.46
1	A	408	GLU	N-CA	5.38	1.52	1.46
1	A	241	ALA	C-O	-5.34	1.17	1.24
1	A	311	GLU	C-O	-5.33	1.18	1.24
1	A	401	GLY	N-CA	5.12	1.50	1.45
1	B	376	ASP	N-CA	-5.08	1.40	1.46
1	B	524	TRP	N-CA	-5.05	1.40	1.46
1	A	629	TYR	N-CA	-5.00	1.40	1.46

All (17) bond angle outliers are listed below:

Mol	Chain	Res	Type	Atoms	Z	Observed(°)	Ideal(°)
1	B	262	GLN	CA-C-N	-10.12	101.57	121.41
1	B	262	GLN	C-N-CA	-10.12	101.57	121.41

Continued on next page...

Continued from previous page...

Mol	Chain	Res	Type	Atoms	Z	Observed(°)	Ideal(°)
1	B	262	GLN	O-C-N	-9.88	112.01	122.19
1	B	18	ASP	N-CA-C	7.98	122.43	111.90
1	A	487	VAL	CA-C-N	-7.01	111.57	119.28
1	A	487	VAL	C-N-CA	-7.01	111.57	119.28
1	B	139	PHE	N-CA-C	-6.93	102.63	112.13
1	B	512	PHE	CB-CA-C	-6.57	102.57	111.89
1	B	263	GLY	N-CA-C	6.54	128.67	113.18
1	A	512	PHE	O-C-N	-6.32	115.00	122.58
1	A	512	PHE	CA-C-N	-6.03	110.03	121.54
1	A	512	PHE	C-N-CA	-6.03	110.03	121.54
1	A	177	TYR	N-CA-C	5.89	119.29	111.75
1	A	304	TRP	N-CA-C	5.43	118.03	109.39
1	B	54	ASN	N-CA-C	-5.41	100.35	108.96
1	A	343	ASP	N-CA-C	5.41	116.85	111.07
1	B	648	GLU	N-CA-C	-5.25	103.09	110.50

There are no chirality outliers.

There are no planarity outliers.

5.2 Too-close contacts [\(i\)](#)

In the following table, the Non-H and H(model) columns list the number of non-hydrogen atoms and hydrogen atoms in the chain respectively. The H(added) column lists the number of hydrogen atoms added and optimized by MolProbity. The Clashes column lists the number of clashes within the asymmetric unit, whereas Symm-Clashes lists symmetry-related clashes.

Mol	Chain	Non-H	H(model)	H(added)	Clashes	Symm-Clashes
1	A	5365	0	5079	19	0
1	B	5376	0	5081	25	1
2	A	2	0	0	0	0
2	B	1	0	0	0	0
3	A	24	0	4	0	0
3	B	24	0	5	0	0
4	B	8	0	14	0	0
5	B	1	0	0	0	0
6	A	312	0	0	0	0
6	B	290	0	0	0	0
All	All	11403	0	10183	44	1

The all-atom clashscore is defined as the number of clashes found per 1000 atoms (including hydrogen atoms). The all-atom clashscore for this structure is 2.

All (44) close contacts within the same asymmetric unit are listed below, sorted by their clash magnitude.

Atom-1	Atom-2	Interatomic distance (Å)	Clash overlap (Å)
1:B:11:PHE:CZ	1:B:97:ALA:HB2	2.29	0.68
1:B:65:ILE:HD13	1:B:89:ILE:HD13	1.76	0.67
1:B:98:ASP:O	1:B:99:ASP:OD1	2.24	0.55
1:A:512:PHE:O	1:A:513:GLU:HB2	2.07	0.54
1:A:512:PHE:O	1:A:513:GLU:CB	2.49	0.53
1:A:526:ASP:OD1	1:A:557:HIS:CE1	2.62	0.53
1:B:171:GLU:HB2	1:B:173:ALA:HB2	1.91	0.52
1:A:12:GLN:HB2	1:A:23:HIS:HB2	1.92	0.52
1:B:11:PHE:CE1	1:B:103:LEU:HD13	2.46	0.50
1:A:496:THR:HG22	1:A:496:THR:O	2.11	0.50
1:B:404:ALA:HB3	1:B:454:MET:HG2	1.93	0.50
1:B:57:ILE:HD11	1:B:149:TRP:CD1	2.47	0.49
1:B:468:MET:HG2	1:B:498:HIS:CE1	2.47	0.49
1:A:185:PRO:HG3	1:A:203:MET:HE1	1.93	0.49
1:B:152:GLU:OE2	1:B:408:GLU:OE2	2.30	0.49
1:B:531:THR:HB	1:B:532:PRO:HD2	1.95	0.48
1:A:240:THR:HB	1:A:245:ARG:HG2	1.94	0.48
1:B:28:LEU:HD21	1:B:31:THR:CG2	2.44	0.48
1:B:406:PHE:HA	1:B:408:GLU:OE1	2.13	0.48
1:B:52:ARG:CZ	1:B:368:GLY:HA2	2.44	0.47
1:A:111:ASN:OD1	1:A:113:ASN:HB2	2.14	0.47
1:B:304:TRP:HA	1:B:306:TRP:CH2	2.48	0.47
1:A:455:ARG:HB2	1:A:469:TRP:CH2	2.50	0.47
1:A:494:ALA:HB1	1:A:585:PRO:HG3	1.97	0.47
1:A:403:MET:HE2	1:A:469:TRP:CZ2	2.51	0.46
1:B:75:SER:HB2	1:B:76:PRO:HD2	1.96	0.46
1:B:12:GLN:HE21	1:B:14:HIS:CD2	2.34	0.46
1:B:194:TYR:CE2	1:B:227:GLU:HB2	2.51	0.46
1:A:280:VAL:HA	1:A:559:ALA:HA	2.00	0.44
1:A:103:LEU:O	1:A:225:ARG:HA	2.18	0.43
1:B:50:MET:HB2	1:B:55:PHE:CE1	2.54	0.43
1:A:406:PHE:HA	1:A:408:GLU:OE1	2.20	0.42
1:A:614:LEU:C	1:A:614:LEU:HD23	2.44	0.42
1:B:19:SER:HA	1:B:32:HIS:O	2.18	0.42
1:A:403:MET:HG2	1:A:405:ASP:HB2	2.01	0.42
1:B:240:THR:HB	1:B:245:ARG:HG2	2.01	0.42
1:B:506:GLY:H	1:B:524:TRP:CG	2.38	0.42
1:B:16:ASN:HB2	1:B:19:SER:OG	2.20	0.41
1:B:99:ASP:HB3	1:B:102:ARG:HG3	2.02	0.41
1:B:197:VAL:HG22	1:B:224:LEU:HG	2.01	0.41

Continued on next page...

Continued from previous page...

Atom-1	Atom-2	Interatomic distance (Å)	Clash overlap (Å)
1:A:252:TRP:CE2	1:A:329:GLN:HG3	2.56	0.41
1:A:193:TYR:CD1	1:A:193:TYR:C	2.99	0.40
1:A:319:ARG:HG3	1:A:323:TRP:CE2	2.57	0.40
1:B:253:ILE:CD1	1:B:451:LEU:HD22	2.52	0.40

All (1) symmetry-related close contacts are listed below. The label for Atom-2 includes the symmetry operator and encoded unit-cell translations to be applied.

Atom-1	Atom-2	Interatomic distance (Å)	Clash overlap (Å)
1:B:312:ASN:OD1	1:B:645:ARG:NH2[2_655]	2.07	0.13

5.3 Torsion angles [i](#)

5.3.1 Protein backbone [i](#)

In the following table, the Percentiles column shows the percent Ramachandran outliers of the chain as a percentile score with respect to all X-ray entries followed by that with respect to entries of similar resolution.

The Analysed column shows the number of residues for which the backbone conformation was analysed, and the total number of residues.

Mol	Chain	Analysed	Favoured	Allowed	Outliers	Percentiles
1	A	665/686 (97%)	644 (97%)	20 (3%)	1 (0%)	43 31
1	B	666/686 (97%)	635 (95%)	29 (4%)	2 (0%)	36 25
All	All	1331/1372 (97%)	1279 (96%)	49 (4%)	3 (0%)	43 31

All (3) Ramachandran outliers are listed below:

Mol	Chain	Res	Type
1	B	100	GLN
1	B	99	ASP
1	A	475	VAL

5.3.2 Protein sidechains [i](#)

In the following table, the Percentiles column shows the percent sidechain outliers of the chain as a percentile score with respect to all X-ray entries followed by that with respect to entries of similar resolution.

The Analysed column shows the number of residues for which the sidechain conformation was analysed, and the total number of residues.

Mol	Chain	Analysed	Rotameric	Outliers	Percentiles	
1	A	561/580 (97%)	553 (99%)	8 (1%)	59	49
1	B	562/580 (97%)	554 (99%)	8 (1%)	59	49
All	All	1123/1160 (97%)	1107 (99%)	16 (1%)	59	49

All (16) residues with a non-rotameric sidechain are listed below:

Mol	Chain	Res	Type
1	A	57	ILE
1	A	60	LYS
1	A	107	LEU
1	A	125	PRO
1	A	224	LEU
1	A	409	TYR
1	A	469	TRP
1	A	628	LEU
1	B	40	TRP
1	B	58	LYS
1	B	75	SER
1	B	77	ASP
1	B	99	ASP
1	B	100	GLN
1	B	409	TYR
1	B	628	LEU

Sometimes sidechains can be flipped to improve hydrogen bonding and reduce clashes. All (10) such sidechains are listed below:

Mol	Chain	Res	Type
1	A	62	GLN
1	A	82	HIS
1	A	94	ASN
1	A	557	HIS
1	B	12	GLN
1	B	15	GLN
1	B	62	GLN
1	B	288	GLN
1	B	473	GLN
1	B	557	HIS

5.3.3 RNA [i](#)

There are no RNA molecules in this entry.

5.4 Non-standard residues in protein, DNA, RNA chains [i](#)

There are no non-standard protein/DNA/RNA residues in this entry.

5.5 Carbohydrates [i](#)

There are no oligosaccharides in this entry.

5.6 Ligand geometry [i](#)

Of 7 ligands modelled in this entry, 4 are monoatomic - leaving 3 for Mogul analysis.

In the following table, the Counts columns list the number of bonds (or angles) for which Mogul statistics could be retrieved, the number of bonds (or angles) that are observed in the model and the number of bonds (or angles) that are defined in the Chemical Component Dictionary. The Link column lists molecule types, if any, to which the group is linked. The Z score for a bond length (or angle) is the number of standard deviations the observed value is removed from the expected value. A bond length (or angle) with $|Z| > 2$ is considered an outlier worth inspection. RMSZ is the root-mean-square of all Z scores of the bond lengths (or angles).

Mol	Type	Chain	Res	Link	Bond lengths			Bond angles		
					Counts	RMSZ	# $ Z > 2$	Counts	RMSZ	# $ Z > 2$
3	NSQ	B	1680	-	23,25,25	1.40	4 (17%)	32,37,37	1.70	7 (21%)
4	MPD	B	1679	-	7,7,7	0.22	0	9,10,10	0.75	0
3	NSQ	A	1681	-	23,25,25	1.22	1 (4%)	32,37,37	1.48	6 (18%)

In the following table, the Chirals column lists the number of chiral outliers, the number of chiral centers analysed, the number of these observed in the model and the number defined in the Chemical Component Dictionary. Similar counts are reported in the Torsion and Rings columns. '-' means no outliers of that kind were identified.

Mol	Type	Chain	Res	Link	Chirals	Torsions	Rings
3	NSQ	B	1680	-	-	2/11/33/33	0/2/2/2
4	MPD	B	1679	-	-	4/5/5/5	-
3	NSQ	A	1681	-	-	2/11/33/33	0/2/2/2

All (5) bond length outliers are listed below:

Mol	Chain	Res	Type	Atoms	Z	Observed(Å)	Ideal(Å)
3	B	1680	NSQ	O34-N32	3.83	1.29	1.22
3	A	1681	NSQ	O34-N32	3.31	1.28	1.22
3	B	1680	NSQ	O1-C25	-2.87	1.32	1.38
3	B	1680	NSQ	O1-C1	2.65	1.45	1.41
3	B	1680	NSQ	C28-N32	-2.24	1.39	1.45

All (13) bond angle outliers are listed below:

Mol	Chain	Res	Type	Atoms	Z	Observed(°)	Ideal(°)
3	B	1680	NSQ	O12-S10-C6	-4.62	99.85	106.76
3	A	1681	NSQ	O13-S10-C6	-3.26	101.89	106.76
3	A	1681	NSQ	O1-C1-C2	3.00	111.53	107.16
3	A	1681	NSQ	C29-C28-N32	2.75	121.74	119.34
3	B	1680	NSQ	C3-C4-C5	2.64	115.03	110.23
3	B	1680	NSQ	O5-C1-C2	2.64	115.80	110.37
3	B	1680	NSQ	O3-C3-C2	2.50	116.26	110.38
3	B	1680	NSQ	O4-C4-C3	-2.45	104.61	110.38
3	B	1680	NSQ	O34-N32-C28	2.43	122.16	118.82
3	A	1681	NSQ	O5-C5-C4	2.37	113.96	109.70
3	B	1680	NSQ	O13-S10-O12	2.29	121.27	113.82
3	A	1681	NSQ	C30-C25-C26	2.11	123.23	120.16
3	A	1681	NSQ	O2-C2-C3	2.09	115.30	110.38

There are no chirality outliers.

All (8) torsion outliers are listed below:

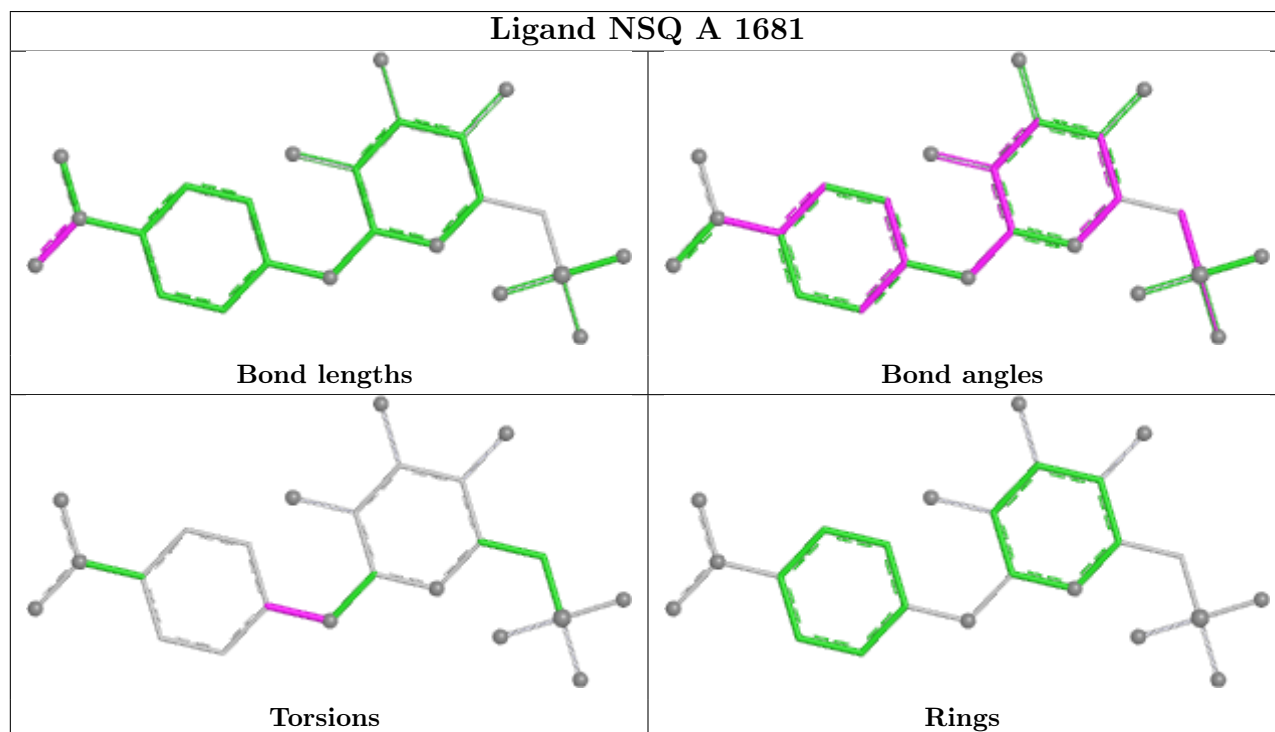
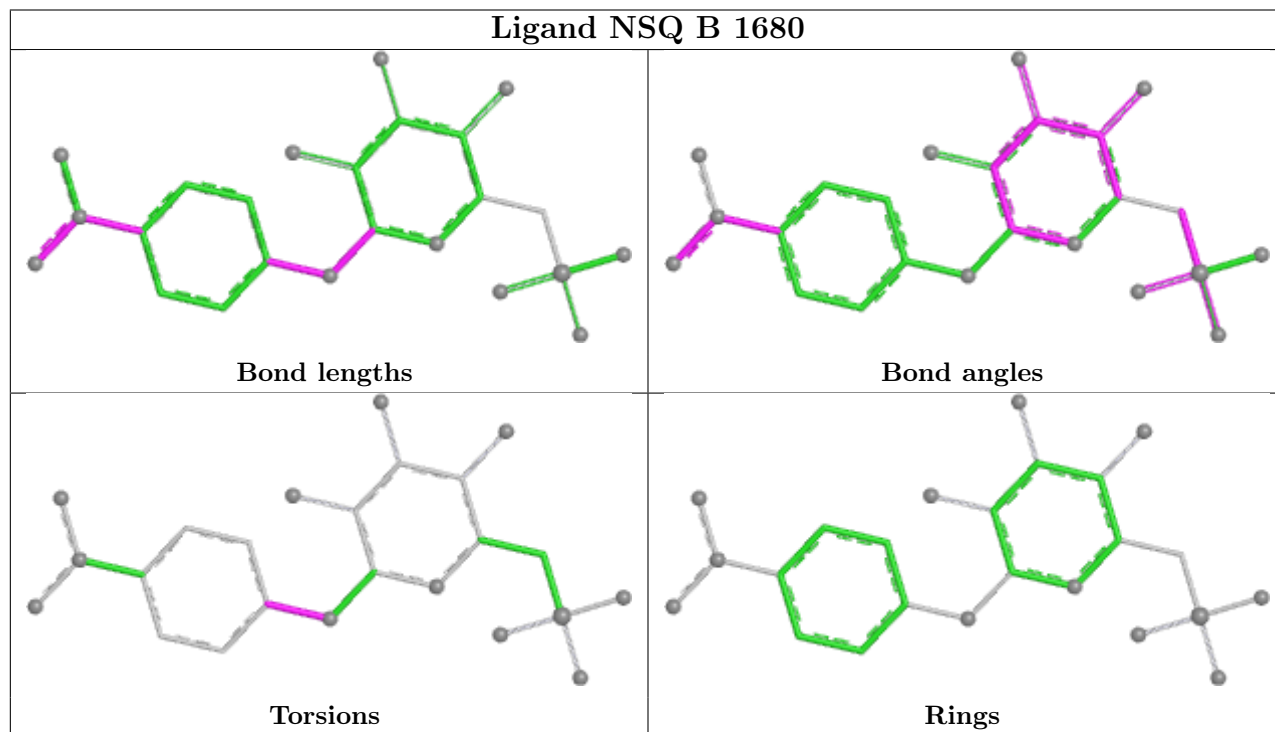
Mol	Chain	Res	Type	Atoms
3	A	1681	NSQ	C30-C25-O1-C1
3	B	1680	NSQ	C30-C25-O1-C1
3	A	1681	NSQ	C26-C25-O1-C1
3	B	1680	NSQ	C26-C25-O1-C1
4	B	1679	MPD	C2-C3-C4-O4
4	B	1679	MPD	O2-C2-C3-C4
4	B	1679	MPD	C1-C2-C3-C4
4	B	1679	MPD	CM-C2-C3-C4

There are no ring outliers.

No monomer is involved in short contacts.

The following is a two-dimensional graphical depiction of Mogul quality analysis of bond lengths, bond angles, torsion angles, and ring geometry for all instances of the Ligand of Interest. In addition, ligands with molecular weight > 250 and outliers as shown on the validation Tables will also be included. For torsion angles, if less than 5% of the Mogul distribution of torsion angles is

within 10 degrees of the torsion angle in question, then that torsion angle is considered an outlier. Any bond that is central to one or more torsion angles identified as an outlier by Mogul will be highlighted in the graph. For rings, the root-mean-square deviation (RMSD) between the ring in question and similar rings identified by Mogul is calculated over all ring torsion angles. If the average RMSD is greater than 60 degrees and the minimal RMSD between the ring in question and any Mogul-identified rings is also greater than 60 degrees, then that ring is considered an outlier. The outliers are highlighted in purple. The color gray indicates Mogul did not find sufficient equivalents in the CSD to analyse the geometry.



5.7 Other polymers [i](#)

There are no such residues in this entry.

5.8 Polymer linkage issues [i](#)

There are no chain breaks in this entry.

6 Fit of model and data [i](#)

6.1 Protein, DNA and RNA chains [i](#)

In the following table, the column labelled ‘#RSRZ > 2’ contains the number (and percentage) of RSRZ outliers, followed by percent RSRZ outliers for the chain as percentile scores relative to all X-ray entries and entries of similar resolution. The OWAB column contains the minimum, median, 95th percentile and maximum values of the occupancy-weighted average B-factor per residue. The column labelled ‘Q < 0.9’ lists the number of (and percentage) of residues with an average occupancy less than 0.9.

Mol	Chain	Analysed	<RSRZ>	#RSRZ>2	OWAB(Å ²)	Q<0.9
1	A	667/686 (97%)	-0.10	6 (0%) 81 84	22, 30, 49, 92	0
1	B	668/686 (97%)	-0.07	13 (1%) 66 70	20, 29, 51, 93	0
All	All	1335/1372 (97%)	-0.09	19 (1%) 73 77	20, 30, 50, 93	0

All (19) RSRZ outliers are listed below:

Mol	Chain	Res	Type	RSRZ
1	B	11	PHE	5.4
1	B	17	ASN	3.6
1	B	677	SER	3.5
1	A	18	ASP	3.0
1	B	98	ASP	2.6
1	B	51	PHE	2.5
1	A	76	PRO	2.5
1	A	51	PHE	2.4
1	B	99	ASP	2.3
1	A	50	MET	2.3
1	A	17	ASN	2.3
1	B	14	HIS	2.3
1	B	34	LYS	2.3
1	B	112	LEU	2.2
1	B	10	ASP	2.2
1	B	171	GLU	2.1
1	B	263	GLY	2.1
1	B	97	ALA	2.1
1	A	678	ILE	2.0

6.2 Non-standard residues in protein, DNA, RNA chains [i](#)

There are no non-standard protein/DNA/RNA residues in this entry.

6.3 Carbohydrates

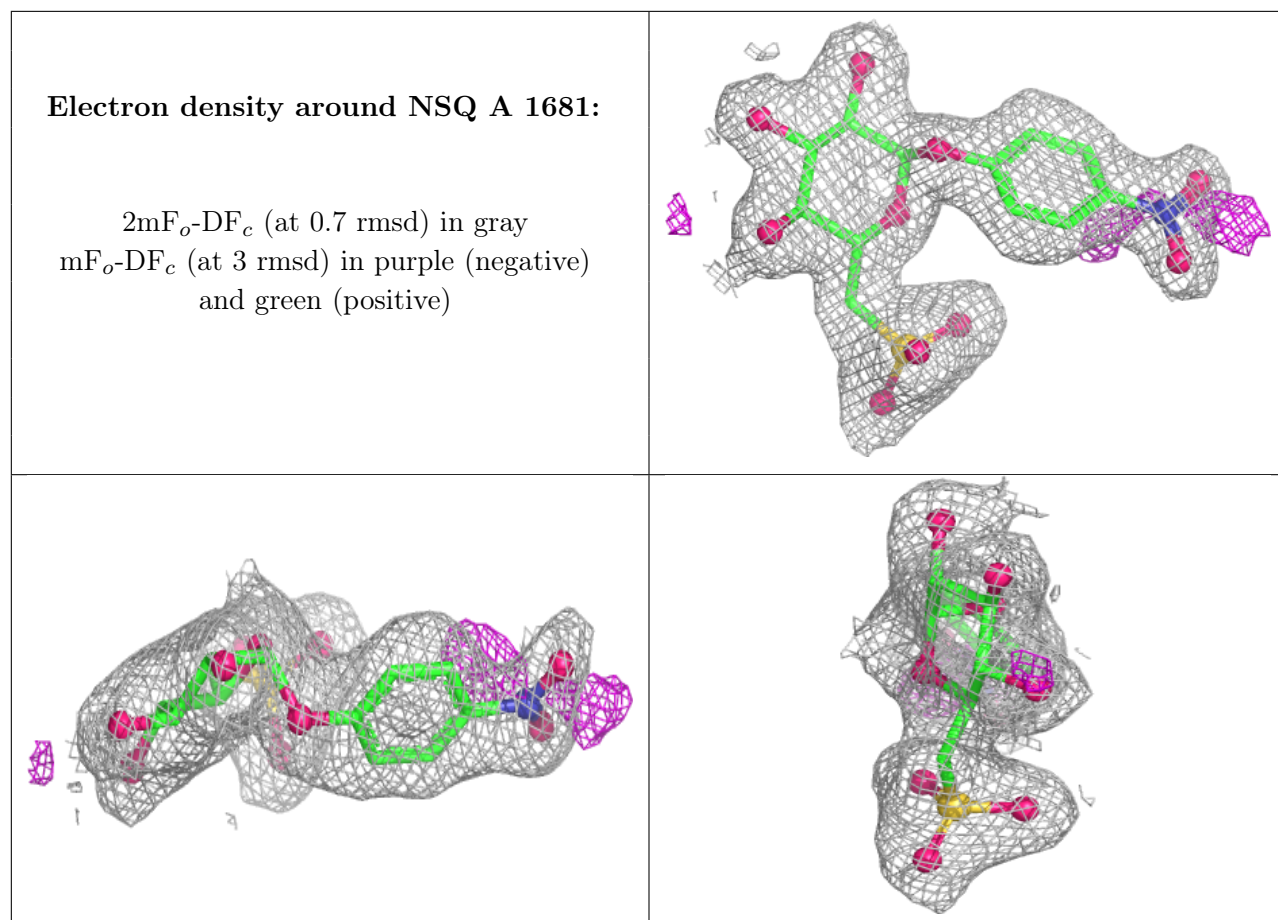
There are no oligosaccharides in this entry.

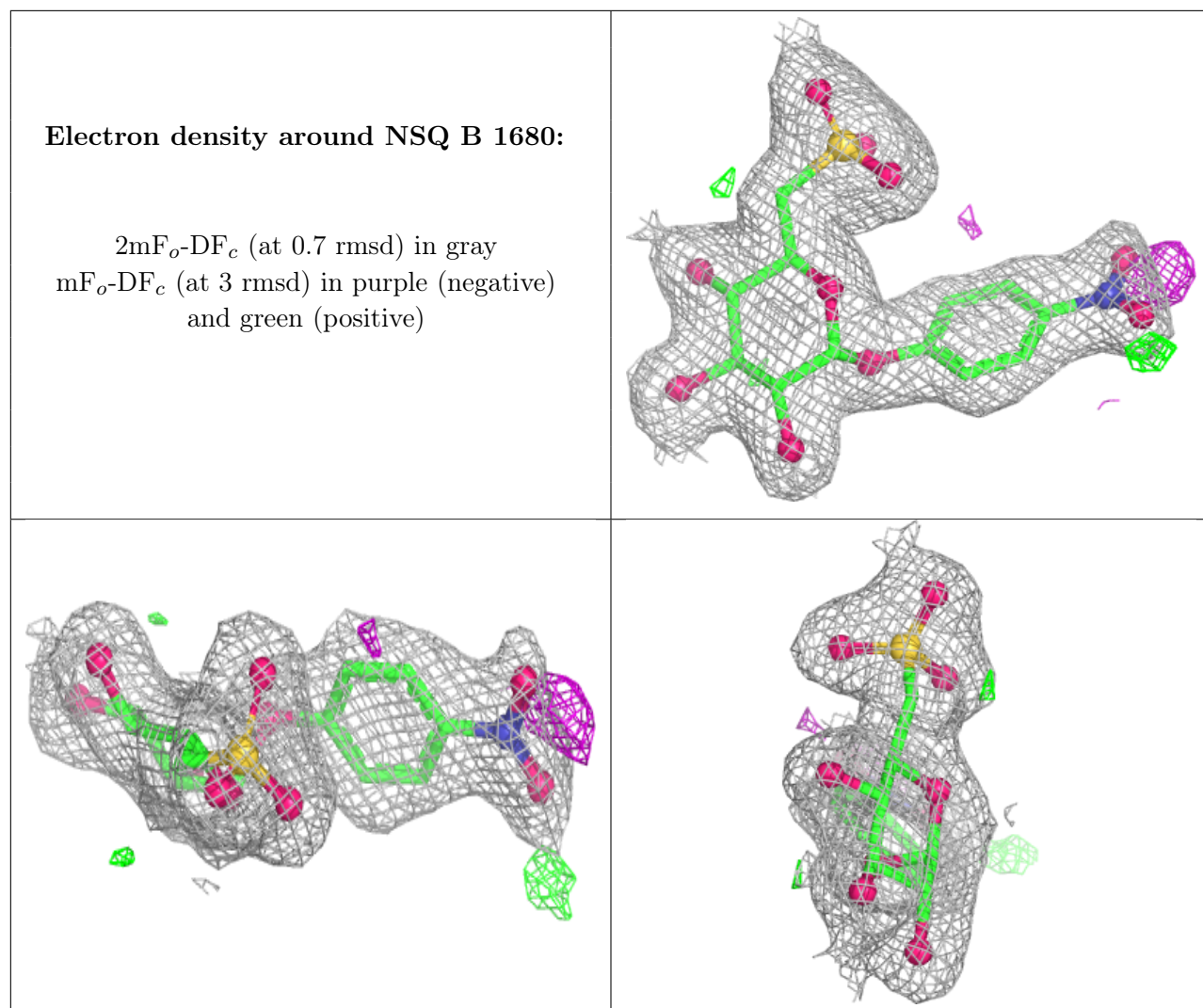
6.4 Ligands

In the following table, the Atoms column lists the number of modelled atoms in the group and the number defined in the chemical component dictionary. The B-factors column lists the minimum, median, 95th percentile and maximum values of B factors of atoms in the group. The column labelled 'Q< 0.9' lists the number of atoms with occupancy less than 0.9.

Mol	Type	Chain	Res	Atoms	RSCC	RSR	B-factors(\AA^2)	Q<0.9
4	MPD	B	1679	8/8	0.90	0.16	43,45,48,48	0
3	NSQ	A	1681	24/24	0.97	0.07	23,25,45,48	0
3	NSQ	B	1680	24/24	0.98	0.06	21,24,49,58	0
2	CA	A	1679	1/1	0.99	0.04	22,22,22,22	0
2	CA	A	1680	1/1	0.99	0.06	36,36,36,36	0
2	CA	B	1678	1/1	0.99	0.02	23,23,23,23	0
5	CL	B	1681	1/1	0.99	0.04	30,30,30,30	0

The following is a graphical depiction of the model fit to experimental electron density of all instances of the Ligand of Interest. In addition, ligands with molecular weight > 250 and outliers as shown on the geometry validation Tables will also be included. Each fit is shown from different orientation to approximate a three-dimensional view.





6.5 Other polymers [i](#)

There are no such residues in this entry.