



wwPDB X-ray Structure Validation Summary Report ⓘ

Mar 10, 2026 – 09:36 AM UTC

PDB ID : 8AFD / pdb_00008afd
Title : CRYSTAL STRUCTURE OF BIT-BLOCKED KRAS-G12V-S39C IN COM-
PLEX WITH COMPOUND 20a
Authors : Boettcher, J.; Kessler, D.
Deposited on : 2022-07-16
Resolution : 1.63 Å (reported)

This is a wwPDB X-ray Structure Validation Summary Report for a publicly released PDB entry.

We welcome your comments at validation@mail.wwpdb.org

A user guide is available at

<https://www.wwpdb.org/validation/2017/XrayValidationReportHelp>

with specific help available everywhere you see the ⓘ symbol.

The types of validation reports are described at

<http://www.wwpdb.org/validation/2017/FAQs#types>.

The following versions of software and data (see [references ⓘ](#)) were used in the production of this report:

MolProbity : 4-5-2 with Phenix2.0
Mogul : 2022.3.0, CSD as543be (2022)
Xtrriage (Phenix) : 2.0
EDS : 3.0
Buster-report : wwPDB partial adaption of 1.1.7 (2018)
Percentile statistics : 20250101.v01 (using entries in the PDB archive January 1st 2025)
CCP4 : 9.0.010 (Gargrove)
Density-Fitness : 1.0.12
Ideal geometry (proteins) : Engh & Huber (2001)
Ideal geometry (DNA, RNA) : Parkinson et al. (1996)
Validation Pipeline (wwPDB-VP) : 2.49

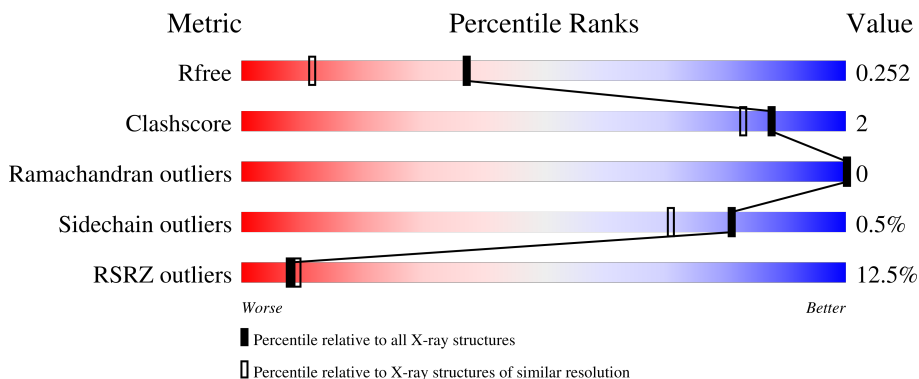
1 Overall quality at a glance

The following experimental techniques were used to determine the structure:

X-RAY DIFFRACTION

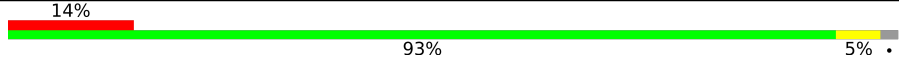
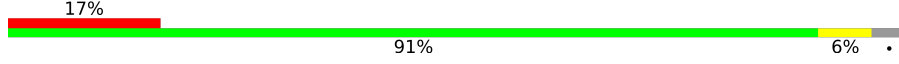


The reported resolution of this entry is 1.63 Å.

Percentile scores (ranging between 0-100) for global validation metrics of the entry are shown in the following graphic. The table shows the number of entries on which the scores are based.



Metric	Whole archive (#Entries)	Similar resolution (#Entries, resolution range(Å))
R_{free}	180053	1141 (1.64-1.64)
Clashscore	190562	1171 (1.64-1.64)
Ramachandran outliers	187476	1151 (1.64-1.64)
Sidechain outliers	187428	1150 (1.64-1.64)
RSRZ outliers	180081	1141 (1.64-1.64)

The table below summarises the geometric issues observed across the polymeric chains and their fit to the electron density. The red, orange, yellow and green segments of the lower bar indicate the fraction of residues that contain outliers for ≥ 3 , 2, 1 and 0 types of geometric quality criteria respectively. A grey segment represents the fraction of residues that are not modelled. The numeric value for each fraction is indicated below the corresponding segment, with a dot representing fractions $\leq 5\%$. The upper red bar (where present) indicates the fraction of residues that have poor fit to the electron density. The numeric value is given above the bar.

Mol	Chain	Length	Quality of chain
1	A	170	
1	B	170	
1	C	170	
1	D	170	

2 Entry composition [i](#)

There are 6 unique types of molecules in this entry. The entry contains 11029 atoms, of which 5232 are hydrogens and 0 are deuteriums.

In the tables below, the ZeroOcc column contains the number of atoms modelled with zero occupancy, the AltConf column contains the number of residues with at least one atom in alternate conformation and the Trace column contains the number of residues modelled with at most 2 atoms.

- Molecule 1 is a protein called GTPase KRas.

Mol	Chain	Residues	Atoms					ZeroOcc	AltConf	Trace	
			Total	C	H	N	O				S
1	A	167	2636	833	1306	228	262	7	1306	0	0
1	B	164	2609	825	1294	226	257	7	1294	1	0
1	C	161	2561	807	1276	222	249	7	1276	0	0
1	D	158	2509	793	1246	216	248	6	1246	1	0

There are 44 discrepancies between the modelled and reference sequences:

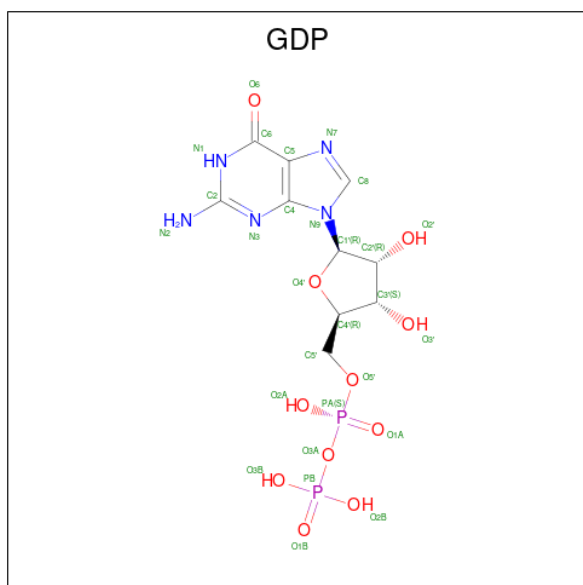
Chain	Residue	Modelled	Actual	Comment	Reference
A	0	GLY	-	expression tag	UNP P01116
A	12	VAL	GLY	engineered mutation	UNP P01116
A	39	CYS	SER	engineered mutation	UNP P01116
A	118	SER	CYS	engineered mutation	UNP P01116
A	151	GLY	ARG	engineered mutation	UNP P01116
A	153	ASP	GLU	engineered mutation	UNP P01116
A	165	LYS	-	expression tag	UNP P01116
A	166	HIS	-	expression tag	UNP P01116
A	167	LYS	-	expression tag	UNP P01116
A	168	GLU	-	expression tag	UNP P01116
A	169	LYS	-	expression tag	UNP P01116
B	0	GLY	-	expression tag	UNP P01116
B	12	VAL	GLY	engineered mutation	UNP P01116
B	39	CYS	SER	engineered mutation	UNP P01116
B	118	SER	CYS	engineered mutation	UNP P01116
B	151	GLY	ARG	engineered mutation	UNP P01116
B	153	ASP	GLU	engineered mutation	UNP P01116
B	165	LYS	-	expression tag	UNP P01116
B	166	HIS	-	expression tag	UNP P01116
B	167	LYS	-	expression tag	UNP P01116
B	168	GLU	-	expression tag	UNP P01116

Continued on next page...

Continued from previous page...

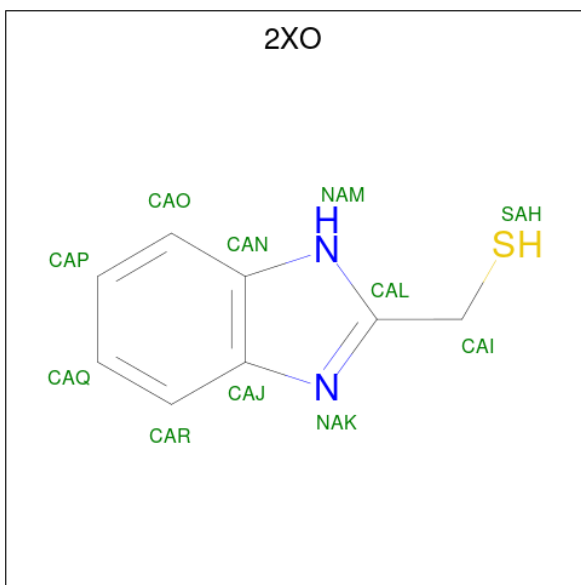
Chain	Residue	Modelled	Actual	Comment	Reference
B	169	LYS	-	expression tag	UNP P01116
C	0	GLY	-	expression tag	UNP P01116
C	12	VAL	GLY	engineered mutation	UNP P01116
C	39	CYS	SER	engineered mutation	UNP P01116
C	118	SER	CYS	engineered mutation	UNP P01116
C	151	GLY	ARG	engineered mutation	UNP P01116
C	153	ASP	GLU	engineered mutation	UNP P01116
C	165	LYS	-	expression tag	UNP P01116
C	166	HIS	-	expression tag	UNP P01116
C	167	LYS	-	expression tag	UNP P01116
C	168	GLU	-	expression tag	UNP P01116
C	169	LYS	-	expression tag	UNP P01116
D	0	GLY	-	expression tag	UNP P01116
D	12	VAL	GLY	engineered mutation	UNP P01116
D	39	CYS	SER	engineered mutation	UNP P01116
D	118	SER	CYS	engineered mutation	UNP P01116
D	151	GLY	ARG	engineered mutation	UNP P01116
D	153	ASP	GLU	engineered mutation	UNP P01116
D	165	LYS	-	expression tag	UNP P01116
D	166	HIS	-	expression tag	UNP P01116
D	167	LYS	-	expression tag	UNP P01116
D	168	GLU	-	expression tag	UNP P01116
D	169	LYS	-	expression tag	UNP P01116

- Molecule 2 is GUANOSINE-5'-DIPHOSPHATE (CCD ID: GDP) (formula: C₁₀H₁₅N₅O₁₁P₂).



Mol	Chain	Residues	Atoms					ZeroOcc	AltConf	
2	A	1	Total	C	H	N	O	P	12	0
			40	10	12	5	11	2		
2	B	1	Total	C	H	N	O	P	12	0
			40	10	12	5	11	2		
2	C	1	Total	C	H	N	O	P	12	0
			40	10	12	5	11	2		
2	D	1	Total	C	H	N	O	P	12	0
			40	10	12	5	11	2		

- Molecule 3 is 1H-benzimidazol-2-ylmethanethiol (CCD ID: 2XO) (formula: C₈H₈N₂S).



Mol	Chain	Residues	Atoms					ZeroOcc	AltConf
3	A	1	Total	C	H	N	S	7	0
			18	8	7	2	1		
3	B	1	Total	C	H	N	S	7	0
			18	8	7	2	1		
3	C	1	Total	C	H	N	S	7	0
			18	8	7	2	1		
3	D	1	Total	C	H	N	S	7	0
			18	8	7	2	1		

- Molecule 4 is MAGNESIUM ION (CCD ID: MG) (formula: Mg).

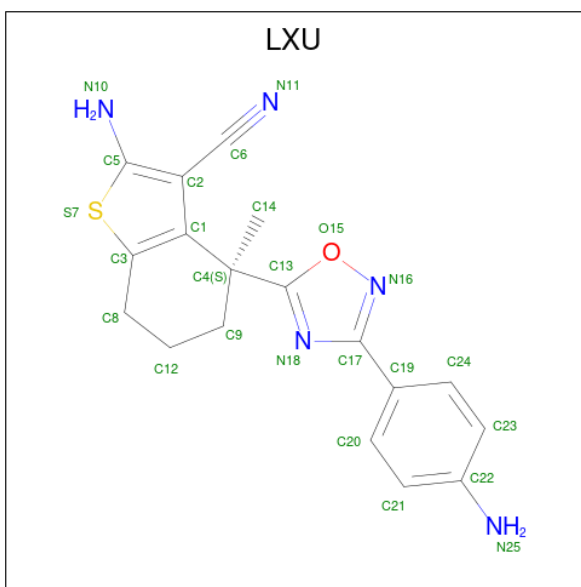
Mol	Chain	Residues	Atoms		ZeroOcc	AltConf
4	A	1	Total	Mg	0	0
			1	1		
4	B	1	Total	Mg	0	0
			1	1		

Continued on next page...

Continued from previous page...

Mol	Chain	Residues	Atoms	ZeroOcc	AltConf
4	C	1	Total Mg 1 1	0	0
4	D	1	Total Mg 1 1	0	0

- Molecule 5 is (4 {S})-4-[3-(4-aminophenyl)-1,2,4-oxadiazol-5-yl]-2-azanyl-4-methyl-6,7-dihydro-5 {H}-1-benzothiophene-3-carbonitrile (CCD ID: LXU) (formula: C₁₈H₁₇N₅OS) (labeled as "Ligand of Interest" by depositor).



Mol	Chain	Residues	Atoms					ZeroOcc	AltConf	
5	A	1	Total	C	H	N	O	S	17	0
			42	18	17	5	1	1		
5	B	1	Total	C	H	N	O	S	17	0
			42	18	17	5	1	1		

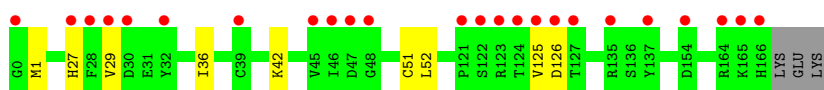
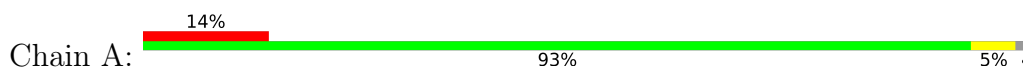
- Molecule 6 is water.

Mol	Chain	Residues	Atoms	ZeroOcc	AltConf
6	A	111	Total O 111 111	0	0
6	B	80	Total O 80 80	0	0
6	C	116	Total O 116 116	0	0
6	D	87	Total O 87 87	0	0

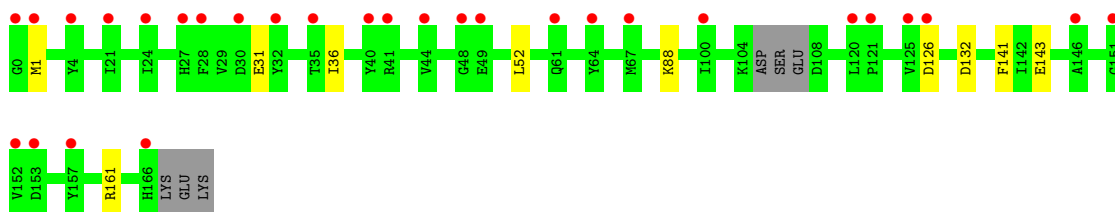
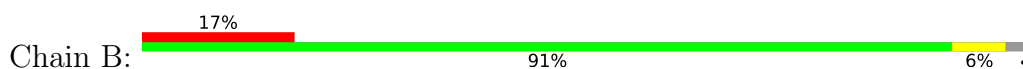
3 Residue-property plots [i](#)

These plots are drawn for all protein, RNA, DNA and oligosaccharide chains in the entry. The first graphic for a chain summarises the proportions of the various outlier classes displayed in the second graphic. The second graphic shows the sequence view annotated by issues in geometry and electron density. Residues are color-coded according to the number of geometric quality criteria for which they contain at least one outlier: green = 0, yellow = 1, orange = 2 and red = 3 or more. A red dot above a residue indicates a poor fit to the electron density ($RSRZ > 2$). Stretches of 2 or more consecutive residues without any outlier are shown as a green connector. Residues present in the sample, but not in the model, are shown in grey.

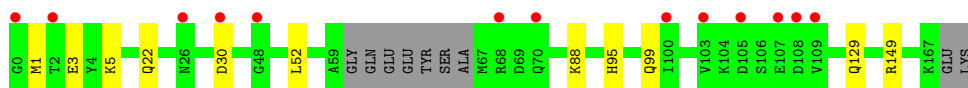
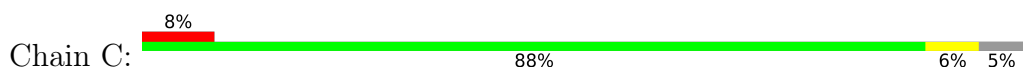
- Molecule 1: GTPase KRas



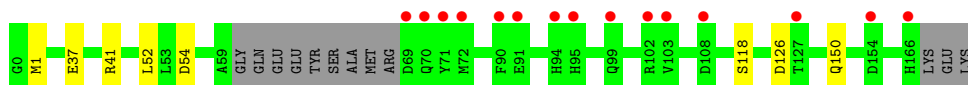
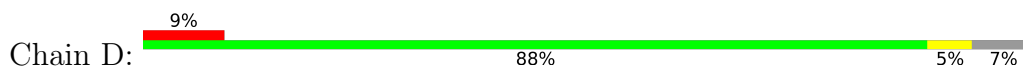
- Molecule 1: GTPase KRas



- Molecule 1: GTPase KRas



- Molecule 1: GTPase KRas



4 Data and refinement statistics i

Property	Value	Source
Space group	C 2 2 21	Depositor
Cell constants a, b, c, α , β , γ	94.89Å 98.61Å 148.12Å 90.00° 90.00° 90.00°	Depositor
Resolution (Å)	32.56 – 1.63 32.56 – 1.63	Depositor EDS
% Data completeness (in resolution range)	55.7 (32.56-1.63) 55.7 (32.56-1.63)	Depositor EDS
R_{merge}	0.12	Depositor
R_{sym}	0.12	Depositor
$\langle I/\sigma(I) \rangle$ ¹	1.45 (at 1.63Å)	Xtrriage
Refinement program	BUSTER 2.11.8 (3-FEB-2022)	Depositor
R, R_{free}	0.231 , 0.265 (Not available) , 0.252	Depositor DCC
R_{free} test set	1663 reflections (1.93%)	wwPDB-VP
Wilson B-factor (Å ²)	19.5	Xtrriage
Anisotropy	0.124	Xtrriage
Bulk solvent k_{sol} (e/Å ³), B_{sol} (Å ²)	0.33 , 39.8	EDS
L-test for twinning ²	$\langle L \rangle = 0.44$, $\langle L^2 \rangle = 0.27$	Xtrriage
Estimated twinning fraction	0.064 for -k,-h,-l	Xtrriage
F_o, F_c correlation	0.92	EDS
Total number of atoms	11029	wwPDB-VP
Average B, all atoms (Å ²)	29.0	wwPDB-VP

Xtrriage's analysis on translational NCS is as follows: *The largest off-origin peak in the Patterson function is 5.16% of the height of the origin peak. No significant pseudotranslation is detected.*

¹Intensities estimated from amplitudes.

²Theoretical values of $\langle |L| \rangle$, $\langle L^2 \rangle$ for acentric reflections are 0.5, 0.333 respectively for untwinned datasets, and 0.375, 0.2 for perfectly twinned datasets.

5 Model quality [i](#)

5.1 Standard geometry [i](#)

Bond lengths and bond angles in the following residue types are not validated in this section: GDP, LXU, MG, 2XO

The Z score for a bond length (or angle) is the number of standard deviations the observed value is removed from the expected value. A bond length (or angle) with $|Z| > 5$ is considered an outlier worth inspection. RMSZ is the root-mean-square of all Z scores of the bond lengths (or angles).

Mol	Chain	Bond lengths		Bond angles	
		RMSZ	# Z >5	RMSZ	# Z >5
1	A	0.95	0/1351	1.02	3/1824 (0.2%)
1	B	0.82	0/1335	0.94	1/1801 (0.1%)
1	C	0.85	0/1304	0.97	0/1758
1	D	0.86	0/1282	0.98	1/1731 (0.1%)
All	All	0.87	0/5272	0.98	5/7114 (0.1%)

There are no bond length outliers.

All (5) bond angle outliers are listed below:

Mol	Chain	Res	Type	Atoms	Z	Observed(°)	Ideal(°)
1	A	126	ASP	CA-CB-CG	7.73	120.33	112.60
1	D	126	ASP	CA-CB-CG	7.14	119.74	112.60
1	A	125	VAL	CA-C-N	5.14	128.14	120.95
1	A	125	VAL	C-N-CA	5.14	128.14	120.95
1	B	36	ILE	N-CA-CB	5.10	116.09	110.53

There are no chirality outliers.

There are no planarity outliers.

5.2 Too-close contacts [i](#)

In the following table, the Non-H and H(model) columns list the number of non-hydrogen atoms and hydrogen atoms in the chain respectively. The H(added) column lists the number of hydrogen atoms added and optimized by MolProbity. The Clashes column lists the number of clashes within the asymmetric unit, whereas Symm-Clashes lists symmetry-related clashes.

Mol	Chain	Non-H	H(model)	H(added)	Clashes	Symm-Clashes
1	A	1330	1306	1309	5	0
1	B	1315	1294	1296	5	0

Continued on next page...

Continued from previous page...

Mol	Chain	Non-H	H(model)	H(added)	Clashes	Symm-Clashes
1	C	1285	1276	1279	8	0
1	D	1263	1246	1248	4	0
2	A	28	12	12	0	0
2	B	28	12	12	0	0
2	C	28	12	12	0	0
2	D	28	12	12	0	0
3	A	11	7	7	1	0
3	B	11	7	7	0	0
3	C	11	7	7	0	0
3	D	11	7	7	1	0
4	A	1	0	0	0	0
4	B	1	0	0	0	0
4	C	1	0	0	0	0
4	D	1	0	0	0	0
5	A	25	17	0	0	0
5	B	25	17	0	1	0
6	A	111	0	0	3	0
6	B	80	0	0	1	0
6	C	116	0	0	2	0
6	D	87	0	0	0	0
All	All	5797	5232	5208	21	0

The all-atom clashscore is defined as the number of clashes found per 1000 atoms (including hydrogen atoms). The all-atom clashscore for this structure is 2.

The worst 5 of 21 close contacts within the same asymmetric unit are listed below, sorted by their clash magnitude.

Atom-1	Atom-2	Interatomic distance (Å)	Clash overlap (Å)
1:C:3:GLU:OE2	6:C:301:HOH:O	2.14	0.64
1:C:5:LYS:HE2	6:C:301:HOH:O	2.03	0.58
1:B:132:ASP:OD2	1:C:129:GLN:OE1	2.25	0.55
1:A:51:CYS:HB3	6:A:316:HOH:O	2.08	0.54
1:D:118[A]:SER:OG	1:D:150:GLN:NE2	2.43	0.51

There are no symmetry-related clashes.

5.3 Torsion angles [i](#)

5.3.1 Protein backbone [i](#)

In the following table, the Percentiles column shows the percent Ramachandran outliers of the chain as a percentile score with respect to all X-ray entries followed by that with respect to entries of similar resolution.

The Analysed column shows the number of residues for which the backbone conformation was analysed, and the total number of residues.

Mol	Chain	Analysed	Favoured	Allowed	Outliers	Percentiles	
1	A	165/170 (97%)	158 (96%)	7 (4%)	0	100	100
1	B	161/170 (95%)	155 (96%)	6 (4%)	0	100	100
1	C	157/170 (92%)	151 (96%)	6 (4%)	0	100	100
1	D	155/170 (91%)	149 (96%)	6 (4%)	0	100	100
All	All	638/680 (94%)	613 (96%)	25 (4%)	0	100	100

There are no Ramachandran outliers to report.

5.3.2 Protein sidechains [i](#)

In the following table, the Percentiles column shows the percent sidechain outliers of the chain as a percentile score with respect to all X-ray entries followed by that with respect to entries of similar resolution.

The Analysed column shows the number of residues for which the sidechain conformation was analysed, and the total number of residues.

Mol	Chain	Analysed	Rotameric	Outliers	Percentiles	
1	A	147/150 (98%)	147 (100%)	0	100	100
1	B	145/150 (97%)	142 (98%)	3 (2%)	47	19
1	C	143/150 (95%)	143 (100%)	0	100	100
1	D	141/150 (94%)	140 (99%)	1 (1%)	76	62
All	All	576/600 (96%)	572 (99%)	4 (1%)	81	62

All (4) residues with a non-rotameric sidechain are listed below:

Mol	Chain	Res	Type
1	B	31	GLU
1	B	126[A]	ASP

Continued on next page...

Continued from previous page...

Mol	Chain	Res	Type
1	B	126[B]	ASP
1	D	41	ARG

Sometimes sidechains can be flipped to improve hydrogen bonding and reduce clashes. 5 of 8 such sidechains are listed below:

Mol	Chain	Res	Type
1	D	166	HIS
1	D	150	GLN
1	C	129	GLN
1	C	43	GLN
1	D	95	HIS

5.3.3 RNA [i](#)

There are no RNA molecules in this entry.

5.4 Non-standard residues in protein, DNA, RNA chains [i](#)

There are no non-standard protein/DNA/RNA residues in this entry.

5.5 Carbohydrates [i](#)

There are no oligosaccharides in this entry.

5.6 Ligand geometry [i](#)

Of 14 ligands modelled in this entry, 4 are monoatomic - leaving 10 for Mogul analysis.

In the following table, the Counts columns list the number of bonds (or angles) for which Mogul statistics could be retrieved, the number of bonds (or angles) that are observed in the model and the number of bonds (or angles) that are defined in the Chemical Component Dictionary. The Link column lists molecule types, if any, to which the group is linked. The Z score for a bond length (or angle) is the number of standard deviations the observed value is removed from the expected value. A bond length (or angle) with $|Z| > 2$ is considered an outlier worth inspection. RMSZ is the root-mean-square of all Z scores of the bond lengths (or angles).

Mol	Type	Chain	Res	Link	Bond lengths			Bond angles		
					Counts	RMSZ	$\# Z > 2$	Counts	RMSZ	$\# Z > 2$
2	GDP	D	201	4	29,30,30	0.48	0	45,47,47	0.47	0
5	LXU	A	204	-	27,28,28	0.41	0	35,42,42	0.54	0

Mol	Type	Chain	Res	Link	Bond lengths			Bond angles		
					Counts	RMSZ	# Z > 2	Counts	RMSZ	# Z > 2
2	GDP	C	201	4	29,30,30	0.46	0	45,47,47	0.52	0
3	2XO	A	202	1	11,12,12	0.31	0	13,16,16	0.46	0
3	2XO	B	203	1	11,12,12	0.30	0	13,16,16	0.46	0
2	GDP	B	201	4	29,30,30	0.42	0	45,47,47	0.49	0
5	LXU	B	204	-	27,28,28	0.28	0	35,42,42	0.68	1 (2%)
2	GDP	A	201	4	29,30,30	0.48	0	45,47,47	0.54	0
3	2XO	D	203	1	11,12,12	0.31	0	13,16,16	0.45	0
3	2XO	C	203	1	11,12,12	0.33	0	13,16,16	0.44	0

In the following table, the Chirals column lists the number of chiral outliers, the number of chiral centers analysed, the number of these observed in the model and the number defined in the Chemical Component Dictionary. Similar counts are reported in the Torsion and Rings columns. '-' means no outliers of that kind were identified.

Mol	Type	Chain	Res	Link	Chirals	Torsions	Rings
2	GDP	D	201	4	-	2/16/32/32	0/3/3/3
5	LXU	A	204	-	-	0/9/25/25	0/4/4/4
2	GDP	C	201	4	-	1/16/32/32	0/3/3/3
3	2XO	A	202	1	-	0/0/10/10	0/2/2/2
3	2XO	B	203	1	-	0/0/10/10	0/2/2/2
2	GDP	B	201	4	-	1/16/32/32	0/3/3/3
5	LXU	B	204	-	-	0/9/25/25	0/4/4/4
2	GDP	A	201	4	-	1/16/32/32	0/3/3/3
3	2XO	D	203	1	-	0/0/10/10	0/2/2/2
3	2XO	C	203	1	-	0/0/10/10	0/2/2/2

There are no bond length outliers.

All (1) bond angle outliers are listed below:

Mol	Chain	Res	Type	Atoms	Z	Observed(°)	Ideal(°)
5	B	204	LXU	C14-C4-C13	-2.09	104.72	108.47

There are no chirality outliers.

All (5) torsion outliers are listed below:

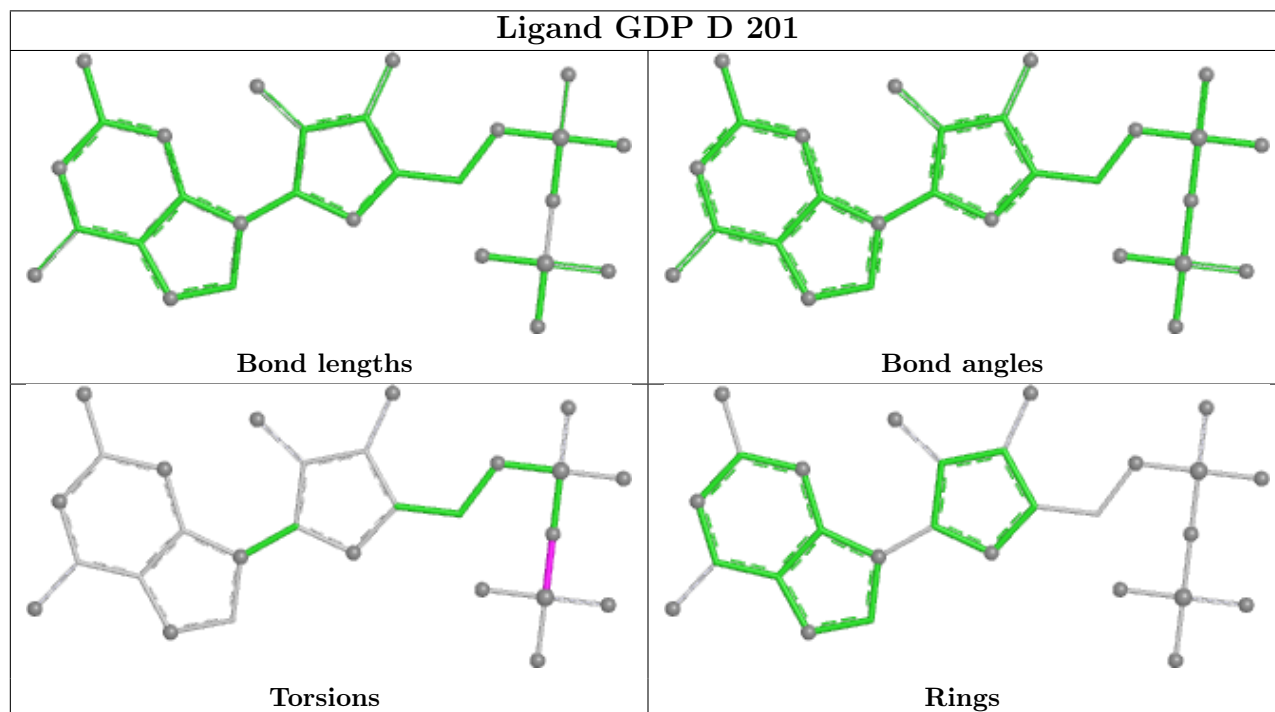
Mol	Chain	Res	Type	Atoms
2	B	201	GDP	PA-O3A-PB-O3B
2	C	201	GDP	PA-O3A-PB-O3B
2	D	201	GDP	PA-O3A-PB-O2B
2	D	201	GDP	PA-O3A-PB-O3B
2	A	201	GDP	PA-O3A-PB-O3B

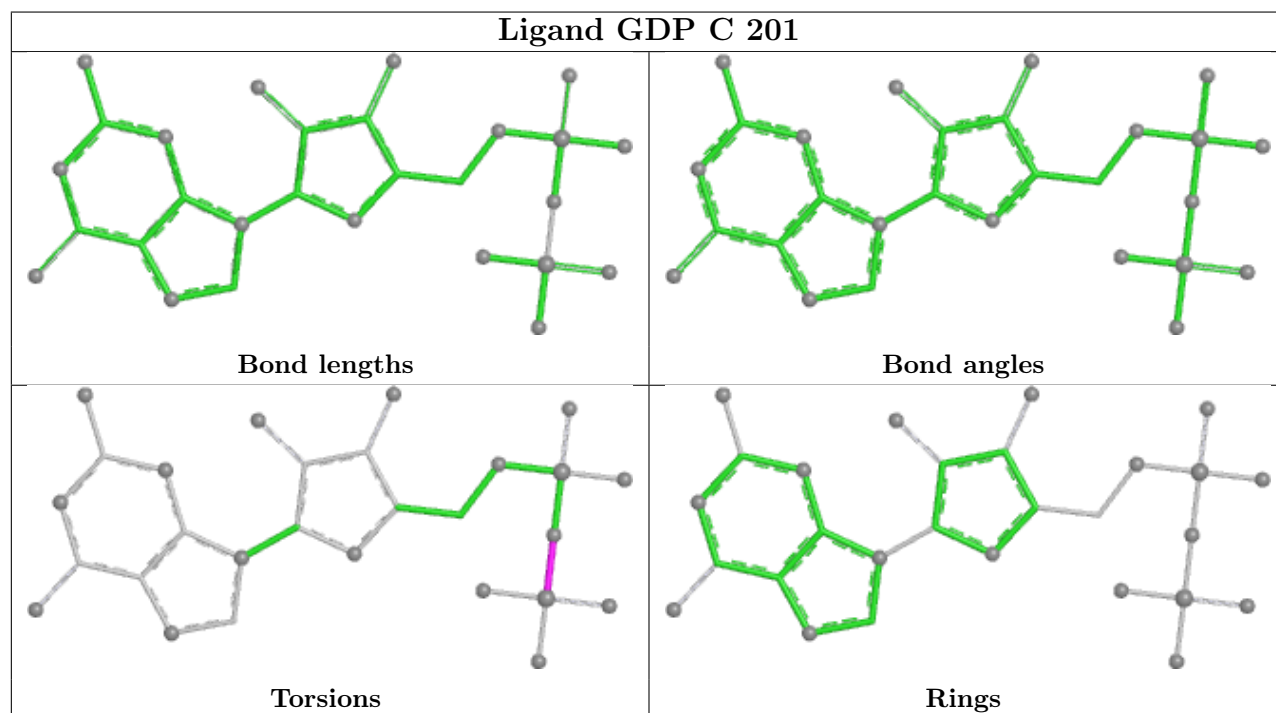
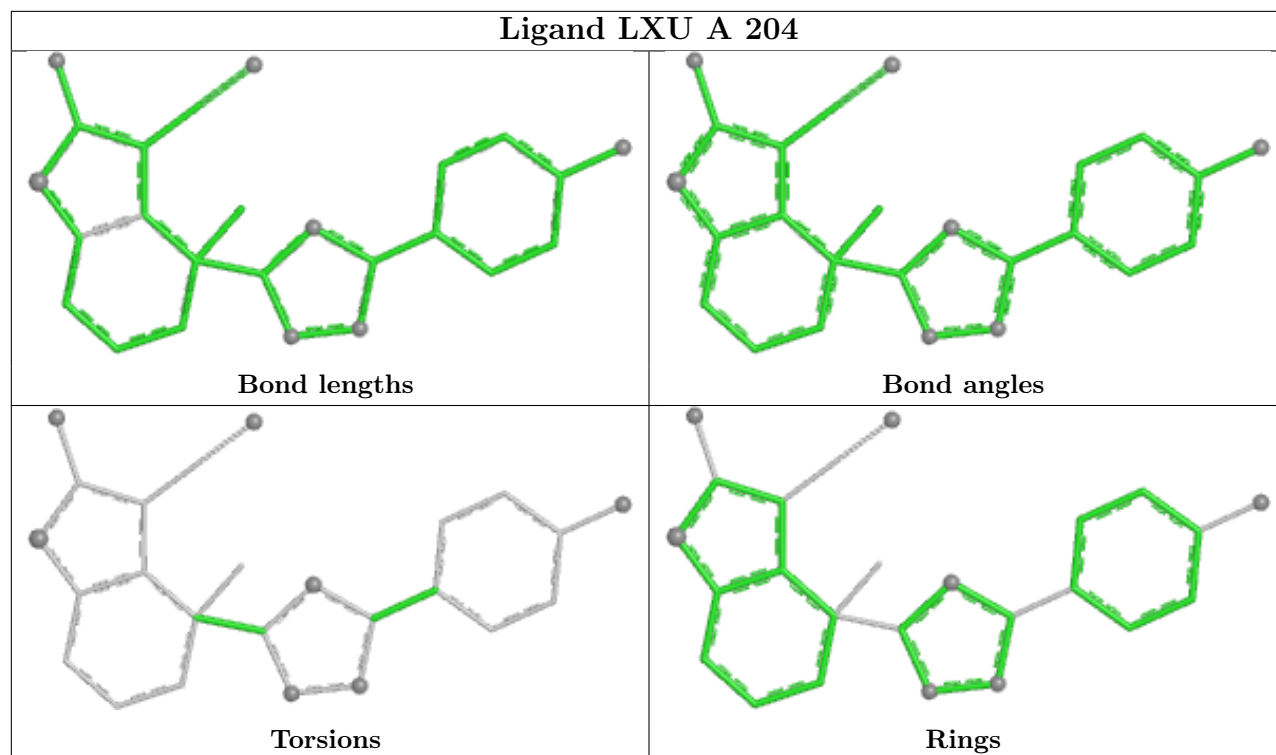
There are no ring outliers.

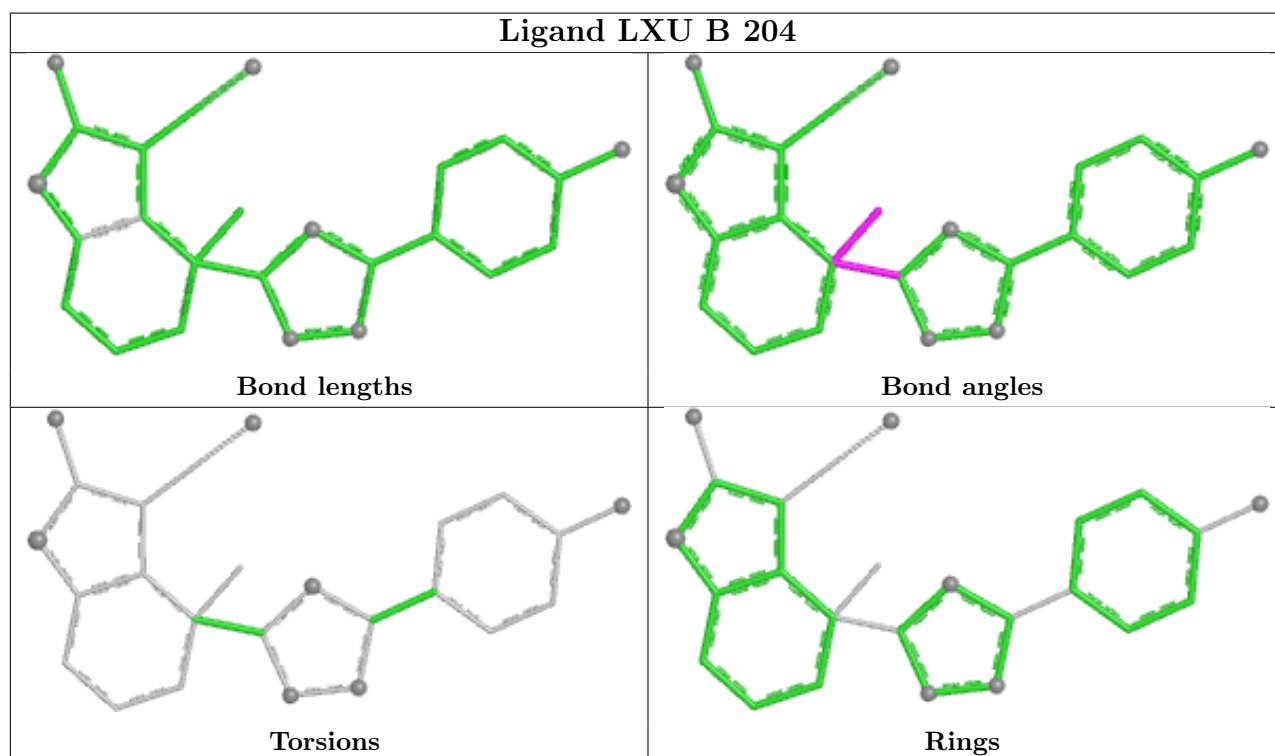
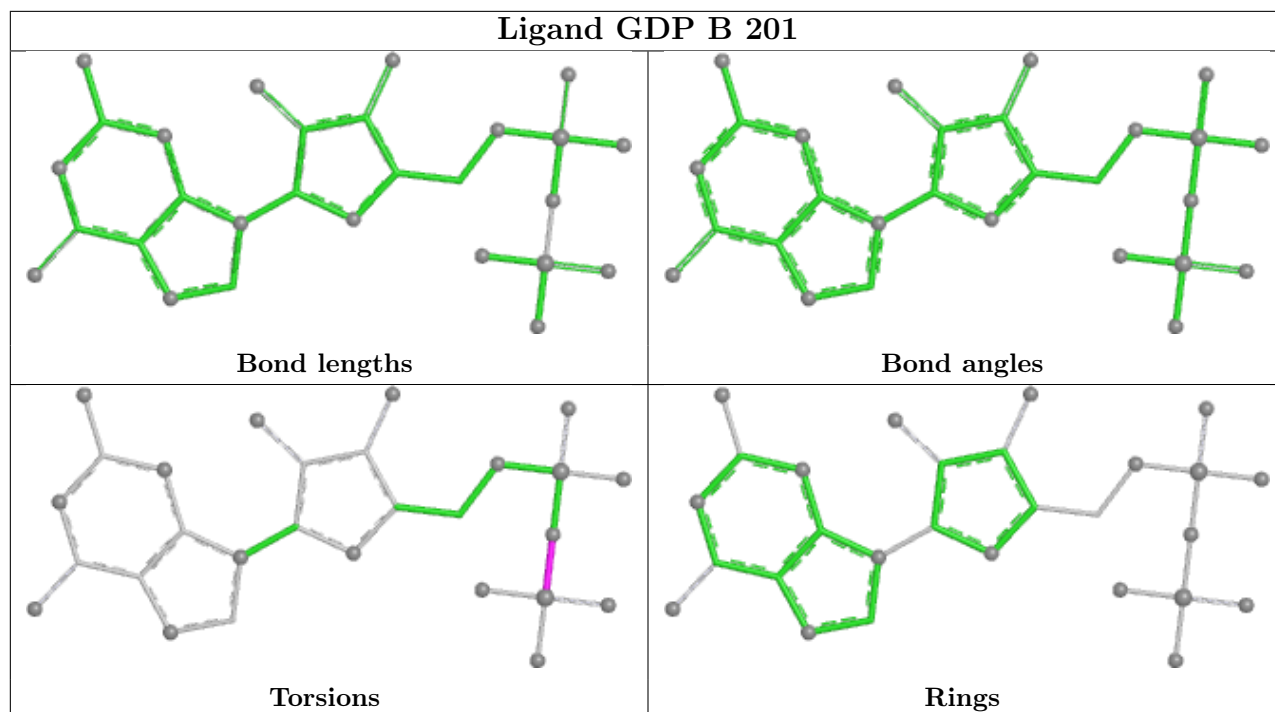
3 monomers are involved in 3 short contacts:

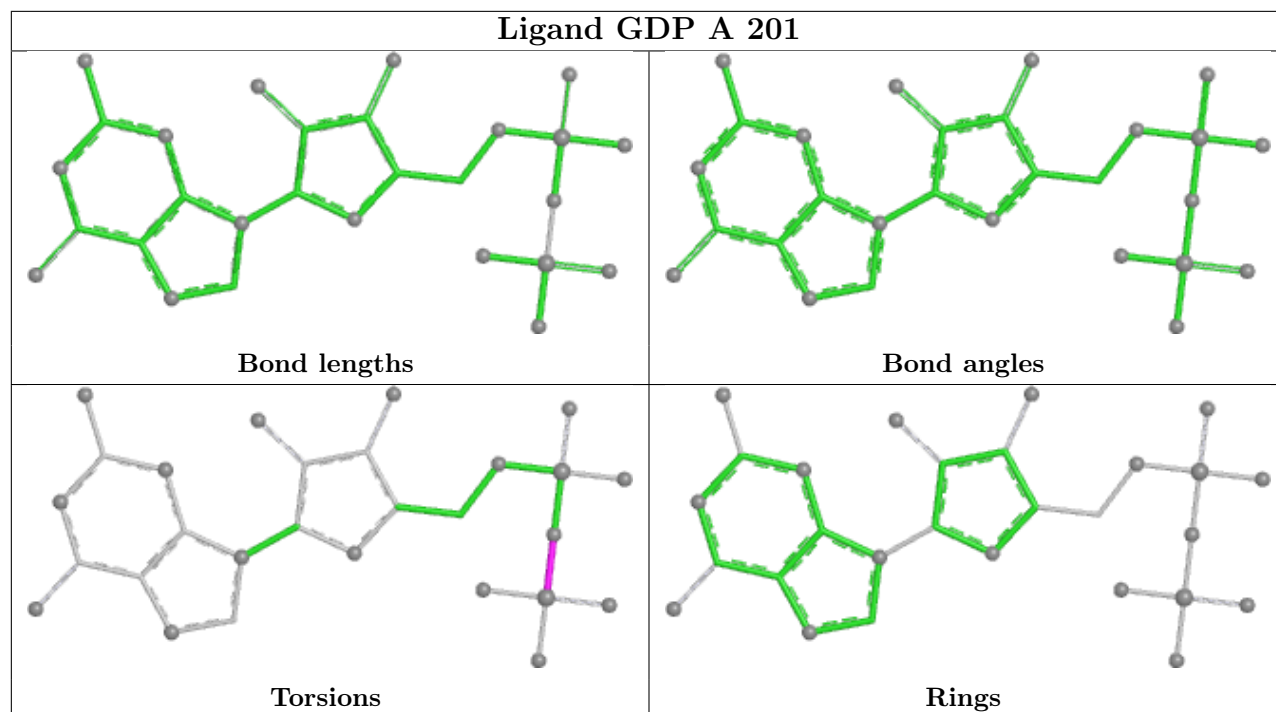
Mol	Chain	Res	Type	Clashes	Symm-Clashes
3	A	202	2XO	1	0
5	B	204	LXU	1	0
3	D	203	2XO	1	0

The following is a two-dimensional graphical depiction of Mogul quality analysis of bond lengths, bond angles, torsion angles, and ring geometry for all instances of the Ligand of Interest. In addition, ligands with molecular weight > 250 and outliers as shown on the validation Tables will also be included. For torsion angles, if less than 5% of the Mogul distribution of torsion angles is within 10 degrees of the torsion angle in question, then that torsion angle is considered an outlier. Any bond that is central to one or more torsion angles identified as an outlier by Mogul will be highlighted in the graph. For rings, the root-mean-square deviation (RMSD) between the ring in question and similar rings identified by Mogul is calculated over all ring torsion angles. If the average RMSD is greater than 60 degrees and the minimal RMSD between the ring in question and any Mogul-identified rings is also greater than 60 degrees, then that ring is considered an outlier. The outliers are highlighted in purple. The color gray indicates Mogul did not find sufficient equivalents in the CSD to analyse the geometry.









5.7 Other polymers [i](#)

There are no such residues in this entry.

5.8 Polymer linkage issues [i](#)

There are no chain breaks in this entry.

6 Fit of model and data [i](#)

6.1 Protein, DNA and RNA chains [i](#)

In the following table, the column labelled ‘#RSRZ > 2’ contains the number (and percentage) of RSRZ outliers, followed by percent RSRZ outliers for the chain as percentile scores relative to all X-ray entries and entries of similar resolution. The OWAB column contains the minimum, median, 95th percentile and maximum values of the occupancy-weighted average B-factor per residue. The column labelled ‘Q < 0.9’ lists the number of (and percentage) of residues with an average occupancy less than 0.9.

Mol	Chain	Analysed	<RSRZ>	#RSRZ>2	OWAB(Å ²)	Q<0.9
1	A	167/170 (98%)	0.81	24 (14%) 6 7	6, 12, 23, 37	0
1	B	164/170 (96%)	1.16	29 (17%) 4 4	8, 15, 30, 39	1 (0%)
1	C	161/170 (94%)	0.68	13 (8%) 18 21	6, 12, 23, 37	0
1	D	158/170 (92%)	0.92	15 (9%) 14 15	6, 14, 30, 55	1 (0%)
All	All	650/680 (95%)	0.89	81 (12%) 8 9	6, 14, 28, 55	2 (0%)

The worst 5 of 81 RSRZ outliers are listed below:

Mol	Chain	Res	Type	RSRZ
1	D	71	TYR	6.8
1	B	0	GLY	5.9
1	D	95	HIS	5.5
1	D	69	ASP	5.4
1	D	72	MET	4.4

6.2 Non-standard residues in protein, DNA, RNA chains [i](#)

There are no non-standard protein/DNA/RNA residues in this entry.

6.3 Carbohydrates [i](#)

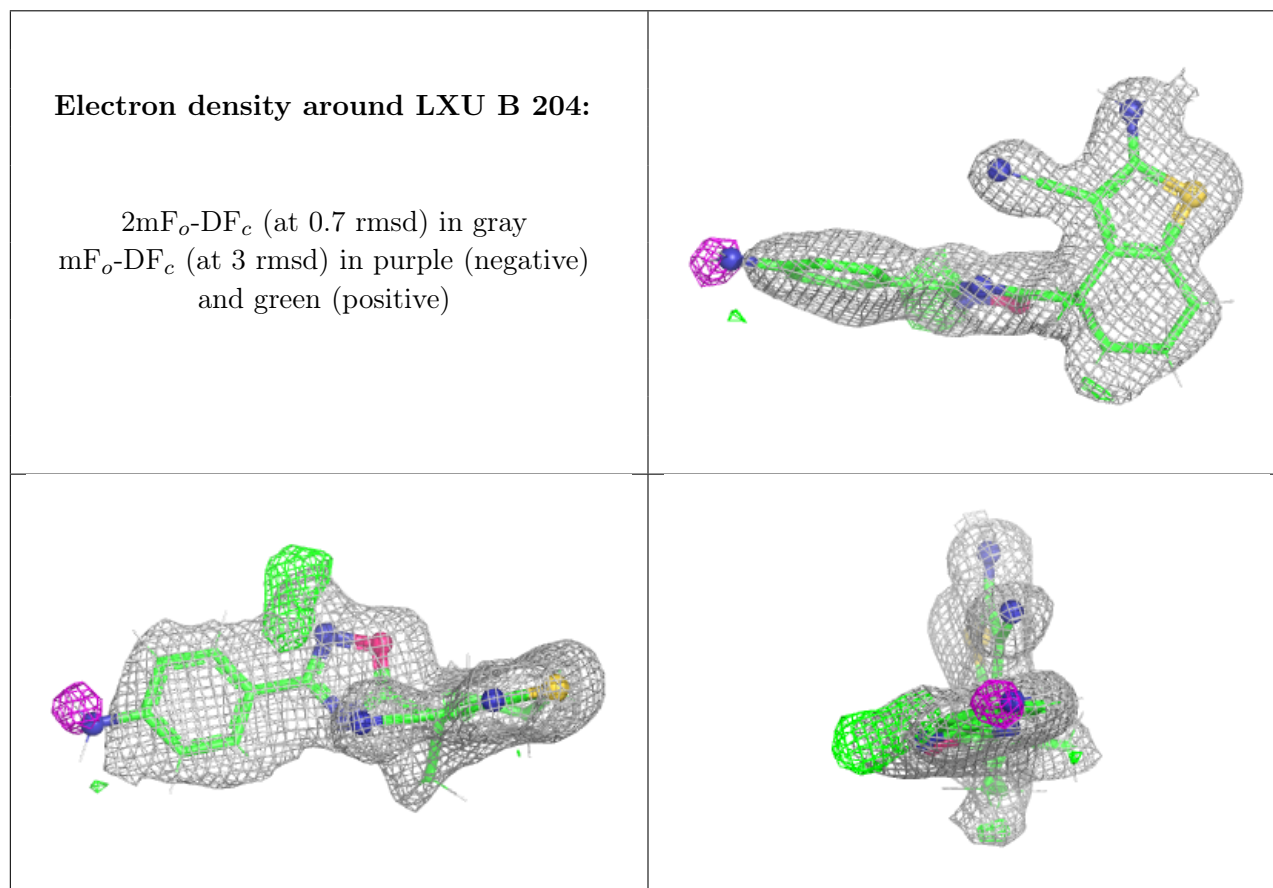
There are no oligosaccharides in this entry.

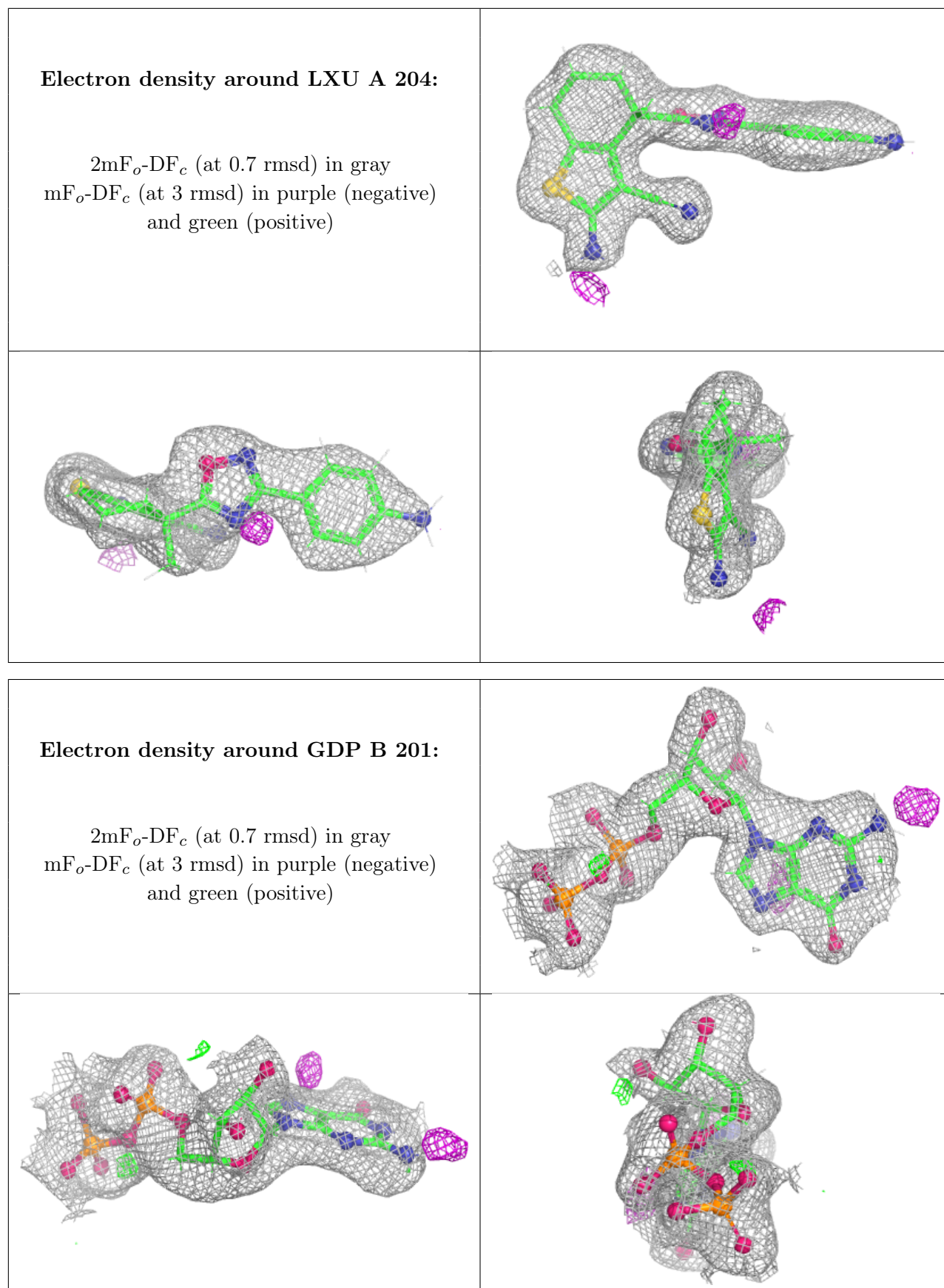
6.4 Ligands [i](#)

In the following table, the Atoms column lists the number of modelled atoms in the group and the number defined in the chemical component dictionary. The B-factors column lists the minimum, median, 95th percentile and maximum values of B factors of atoms in the group. The column labelled ‘Q < 0.9’ lists the number of atoms with occupancy less than 0.9.

Mol	Type	Chain	Res	Atoms	RSCC	RSR	B-factors(\AA^2)	Q<0.9
3	2XO	B	203	11/11	0.73	0.16	48,50,54,58	7
3	2XO	D	203	11/11	0.88	0.11	34,35,35,39	7
5	LXU	B	204	25/25	0.88	0.13	20,23,30,33	42
5	LXU	A	204	25/25	0.91	0.10	22,24,30,31	17
3	2XO	A	202	11/11	0.92	0.09	25,26,26,32	7
3	2XO	C	203	11/11	0.93	0.08	20,21,23,24	7
2	GDP	B	201	28/28	0.93	0.09	29,35,40,40	12
4	MG	B	202	1/1	0.96	0.05	28,28,28,28	0
2	GDP	C	201	28/28	0.97	0.06	13,18,20,20	12
2	GDP	A	201	28/28	0.97	0.06	17,19,22,22	12
2	GDP	D	201	28/28	0.98	0.05	17,20,23,23	12
4	MG	D	202	1/1	0.99	0.04	14,14,14,14	0
4	MG	A	203	1/1	0.99	0.02	15,15,15,15	0
4	MG	C	202	1/1	0.99	0.03	13,13,13,13	0

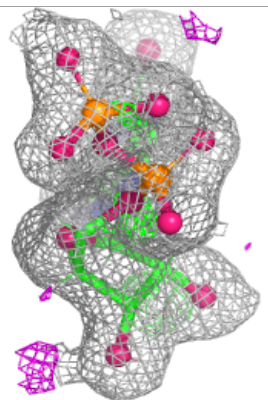
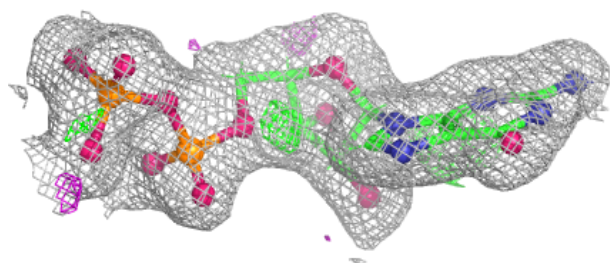
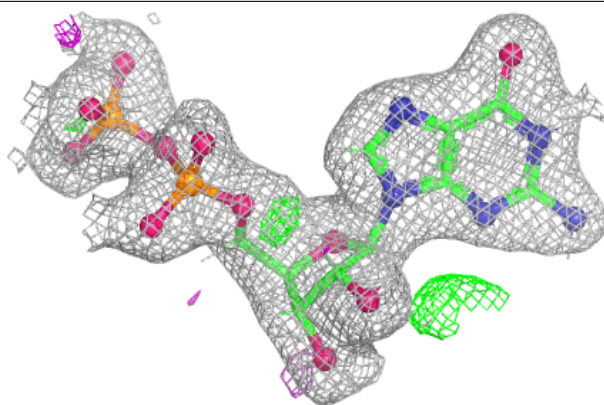
The following is a graphical depiction of the model fit to experimental electron density of all instances of the Ligand of Interest. In addition, ligands with molecular weight > 250 and outliers as shown on the geometry validation Tables will also be included. Each fit is shown from different orientation to approximate a three-dimensional view.



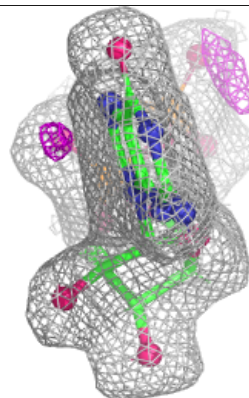
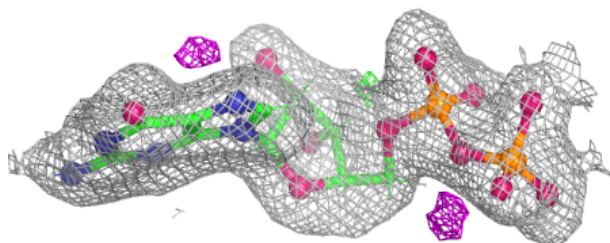
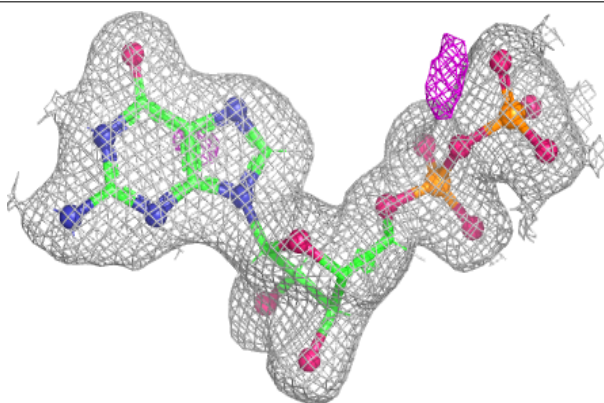


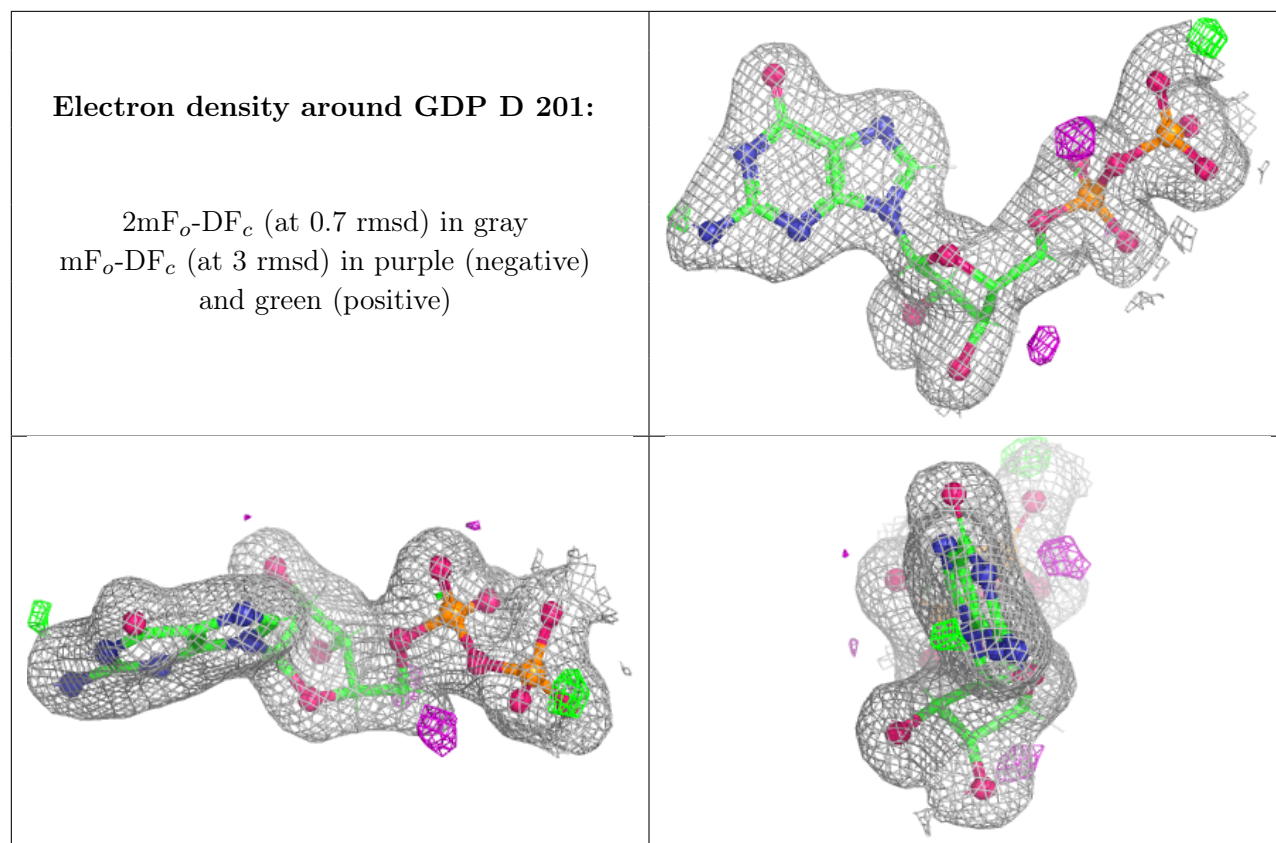
Electron density around GDP C 201:

$2mF_o-DF_c$ (at 0.7 rmsd) in gray
 mF_o-DF_c (at 3 rmsd) in purple (negative)
and green (positive)

**Electron density around GDP A 201:**

$2mF_o-DF_c$ (at 0.7 rmsd) in gray
 mF_o-DF_c (at 3 rmsd) in purple (negative)
and green (positive)





6.5 Other polymers [i](#)

There are no such residues in this entry.