



wwPDB X-ray Structure Validation Summary Report ⓘ

Mar 5, 2026 – 09:33 PM UTC

PDB ID : 3AML / pdb_00003aml
Title : Structure of the Starch Branching Enzyme I (BEI) from *Oryza sativa* L
Authors : Kakuta, Y.; Chaen, K.; Noguchi, J.; Vu, N.; Kimura, M.
Deposited on : 2010-08-20
Resolution : 1.70 Å (reported)

This is a wwPDB X-ray Structure Validation Summary Report for a publicly released PDB entry.

We welcome your comments at validation@mail.wwpdb.org

A user guide is available at

<https://www.wwpdb.org/validation/2017/XrayValidationReportHelp>

with specific help available everywhere you see the ⓘ symbol.

The types of validation reports are described at

<http://www.wwpdb.org/validation/2017/FAQs#types>.

The following versions of software and data (see [references ⓘ](#)) were used in the production of this report:

MolProbity : 4-5-2 with Phenix2.0
Mogul : 2022.3.0, CSD as543be (2022)
Xtriage (Phenix) : 2.0
EDS : 3.0
Percentile statistics : 20250101.v01 (using entries in the PDB archive January 1st 2025)
CCP4 : 9.0.010 (Gargrove)
Density-Fitness : 1.0.12
Ideal geometry (proteins) : Engh & Huber (2001)
Ideal geometry (DNA, RNA) : Parkinson et al. (1996)
Validation Pipeline (wwPDB-VP) : 2.49

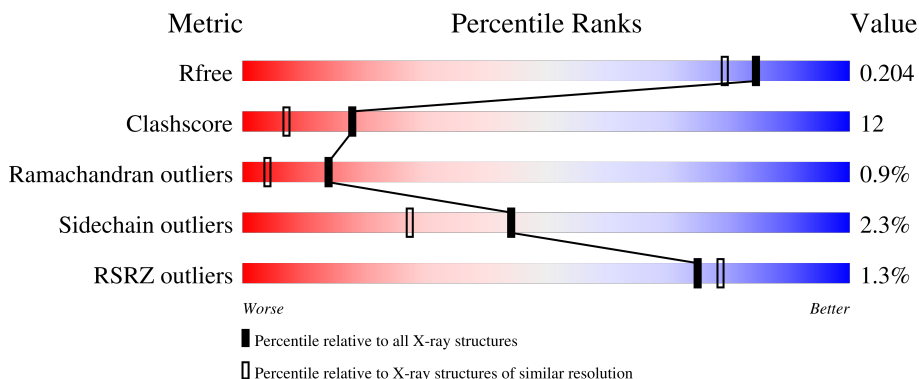
1 Overall quality at a glance

The following experimental techniques were used to determine the structure:

X-RAY DIFFRACTION

The reported resolution of this entry is 1.70 Å.

Percentile scores (ranging between 0-100) for global validation metrics of the entry are shown in the following graphic. The table shows the number of entries on which the scores are based.



Metric	Whole archive (#Entries)	Similar resolution (#Entries, resolution range(Å))
R_{free}	180053	5551 (1.70-1.70)
Clashscore	190562	5924 (1.70-1.70)
Ramachandran outliers	187476	5846 (1.70-1.70)
Sidechain outliers	187428	5846 (1.70-1.70)
RSRZ outliers	180081	5554 (1.70-1.70)

The table below summarises the geometric issues observed across the polymeric chains and their fit to the electron density. The red, orange, yellow and green segments of the lower bar indicate the fraction of residues that contain outliers for ≥ 3 , 2, 1 and 0 types of geometric quality criteria respectively. A grey segment represents the fraction of residues that are not modelled. The numeric value for each fraction is indicated below the corresponding segment, with a dot representing fractions $\leq 5\%$. The upper red bar (where present) indicates the fraction of residues that have poor fit to the electron density. The numeric value is given above the bar.

Mol	Chain	Length	Quality of chain
1	A	755	

The following table lists non-polymeric compounds, carbohydrate monomers and non-standard residues in protein, DNA, RNA chains that are outliers for geometric or electron-density-fit criteria:

Mol	Type	Chain	Res	Chirality	Geometry	Clashes	Electron density
2	BME	A	756	-	-	X	-

Continued on next page...

Continued from previous page...

Mol	Type	Chain	Res	Chirality	Geometry	Clashes	Electron density
3	GOL	A	757	-	X	-	-
3	GOL	A	780	-	X	-	-
3	GOL	A	787	-	-	X	-
6	SIN	A	766	-	-	X	-
6	SIN	A	789	-	X	-	-

2 Entry composition [i](#)

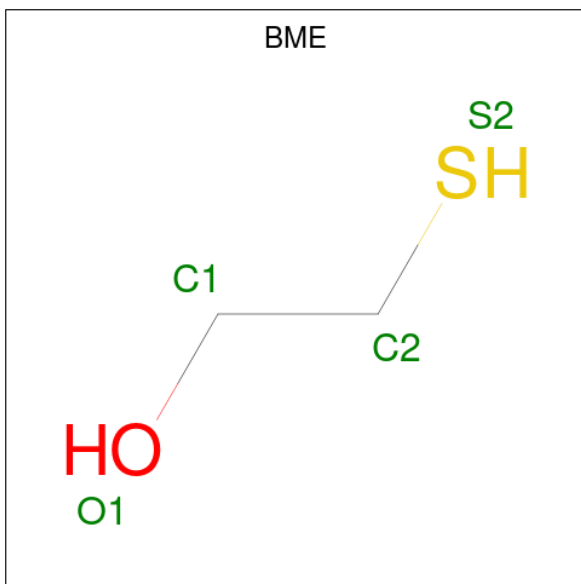
There are 7 unique types of molecules in this entry. The entry contains 6781 atoms, of which 0 are hydrogens and 0 are deuteriums.

In the tables below, the ZeroOcc column contains the number of atoms modelled with zero occupancy, the AltConf column contains the number of residues with at least one atom in alternate conformation and the Trace column contains the number of residues modelled with at most 2 atoms.

- Molecule 1 is a protein called Os06g0726400 protein.

Mol	Chain	Residues	Atoms					ZeroOcc	AltConf	Trace
			Total	C	N	O	S			
1	A	693	5858	3760	1004	1054	40	0	38	0

- Molecule 2 is BETA-MERCAPTOETHANOL (CCD ID: BME) (formula: C₂H₆OS).



Mol	Chain	Residues	Atoms				ZeroOcc	AltConf
			Total	C	O	S		
2	A	1	4	2	1	1	0	0
2	A	1	Total	C	O	S	0	0
			4	2	1	1		

- Molecule 3 is GLYCEROL (CCD ID: GOL) (formula: C₃H₈O₃).



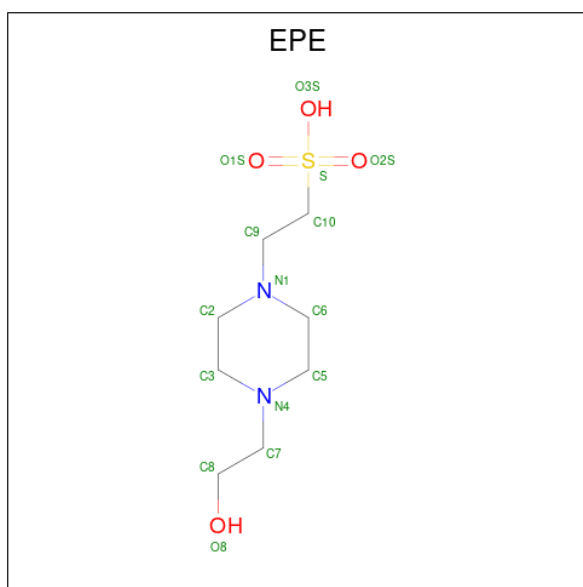
Mol	Chain	Residues	Atoms	ZeroOcc	AltConf
3	A	1	Total C O 6 3 3	0	0
3	A	1	Total C O 6 3 3	0	0
3	A	1	Total C O 6 3 3	0	0
3	A	1	Total C O 6 3 3	0	0
3	A	1	Total C O 6 3 3	0	0
3	A	1	Total C O 6 3 3	0	0
3	A	1	Total C O 6 3 3	0	0
3	A	1	Total C O 6 3 3	0	0
3	A	1	Total C O 6 3 3	0	0
3	A	1	Total C O 6 3 3	0	0
3	A	1	Total C O 6 3 3	0	0
3	A	1	Total C O 6 3 3	0	0
3	A	1	Total C O 6 3 3	0	0
3	A	1	Total C O 6 3 3	0	0
3	A	1	Total C O 6 3 3	0	0

Continued on next page...

Continued from previous page...

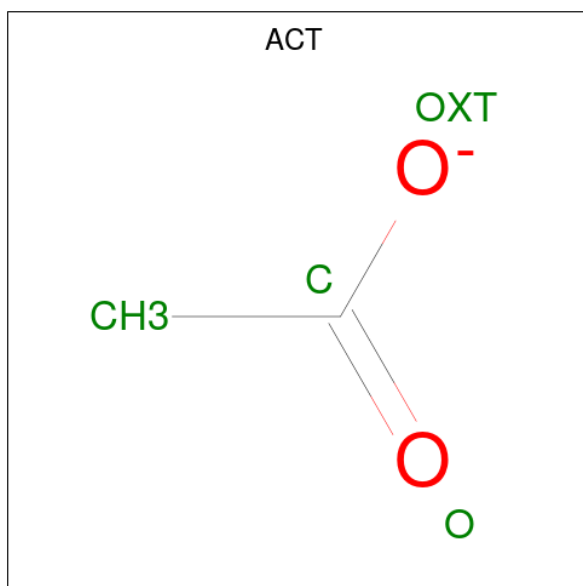
Mol	Chain	Residues	Atoms			ZeroOcc	AltConf
3	A	1	Total	C	O	0	0
			6	3	3		
3	A	1	Total	C	O	0	0
			6	3	3		
3	A	1	Total	C	O	0	0
			6	3	3		
3	A	1	Total	C	O	0	0
			6	3	3		
3	A	1	Total	C	O	0	0
			6	3	3		
3	A	1	Total	C	O	0	0
			6	3	3		
3	A	1	Total	C	O	0	0
			6	3	3		
3	A	1	Total	C	O	0	0
			6	3	3		
3	A	1	Total	C	O	0	0
			6	3	3		
3	A	1	Total	C	O	0	0
			6	3	3		
3	A	1	Total	C	O	0	0
			6	3	3		
3	A	1	Total	C	O	0	0
			6	3	3		
3	A	1	Total	C	O	0	0
			6	3	3		
3	A	1	Total	C	O	0	0
			6	3	3		

- Molecule 4 is 4-(2-HYDROXYETHYL)-1-PIPERAZINE ETHANESULFONIC ACID (CCD ID: EPE) (formula: C₈H₁₈N₂O₄S).



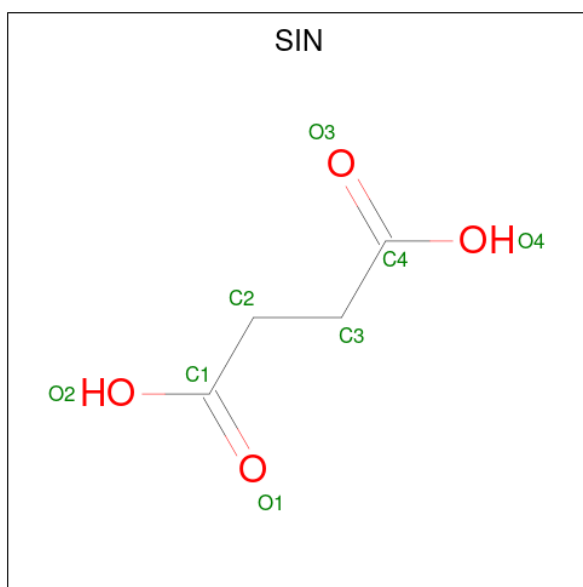
Mol	Chain	Residues	Atoms					ZeroOcc	AltConf
			Total	C	N	O	S		
4	A	1	15	8	2	4	1	0	0

- Molecule 5 is ACETATE ION (CCD ID: ACT) (formula: $C_2H_3O_2^-$).



Mol	Chain	Residues	Atoms			ZeroOcc	AltConf
			Total	C	O		
5	A	1	4	2	2	0	0

- Molecule 6 is SUCCINIC ACID (CCD ID: SIN) (formula: $C_4H_6O_4$).



Mol	Chain	Residues	Atoms	ZeroOcc	AltConf
6	A	1	Total C O 8 4 4	0	0
6	A	1	Total C O 8 4 4	0	0

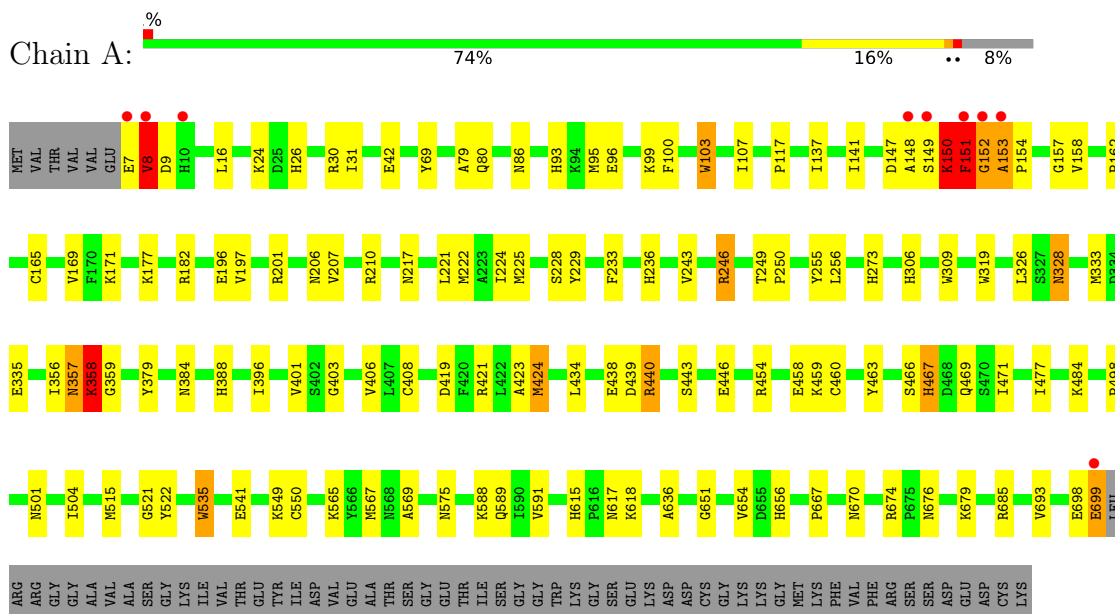
- Molecule 7 is water.

Mol	Chain	Residues	Atoms	ZeroOcc	AltConf
7	A	688	Total O 688 688	0	0

3 Residue-property plots [i](#)

These plots are drawn for all protein, RNA, DNA and oligosaccharide chains in the entry. The first graphic for a chain summarises the proportions of the various outlier classes displayed in the second graphic. The second graphic shows the sequence view annotated by issues in geometry and electron density. Residues are color-coded according to the number of geometric quality criteria for which they contain at least one outlier: green = 0, yellow = 1, orange = 2 and red = 3 or more. A red dot above a residue indicates a poor fit to the electron density ($RSRZ > 2$). Stretches of 2 or more consecutive residues without any outlier are shown as a green connector. Residues present in the sample, but not in the model, are shown in grey.

- Molecule 1: Os06g0726400 protein



4 Data and refinement statistics

Property	Value	Source
Space group	P 1 21 1	Depositor
Cell constants a, b, c, α , β , γ	43.07Å 124.85Å 67.88Å 90.00° 97.29° 90.00°	Depositor
Resolution (Å)	21.12 – 1.70 21.12 – 1.70	Depositor EDS
% Data completeness (in resolution range)	99.5 (21.12-1.70) 99.8 (21.12-1.70)	Depositor EDS
R_{merge}	0.09	Depositor
R_{sym}	0.09	Depositor
$\langle I/\sigma(I) \rangle$ ¹	2.13 (at 1.69Å)	Xtrriage
Refinement program	REFMAC 5.5.0102	Depositor
R, R_{free}	0.146 , 0.196 0.154 , 0.204	Depositor DCC
R_{free} test set	3931 reflections (5.00%)	wwPDB-VP
Wilson B-factor (Å ²)	18.9	Xtrriage
Anisotropy	0.131	Xtrriage
Bulk solvent k_{sol} (e/Å ³), B_{sol} (Å ²)	0.39 , 44.2	EDS
L-test for twinning ²	$\langle L \rangle = 0.50$, $\langle L^2 \rangle = 0.33$	Xtrriage
Estimated twinning fraction	No twinning to report.	Xtrriage
F_o, F_c correlation	0.97	EDS
Total number of atoms	6781	wwPDB-VP
Average B, all atoms (Å ²)	23.0	wwPDB-VP

Xtrriage's analysis on translational NCS is as follows: *The largest off-origin peak in the Patterson function is 5.00% of the height of the origin peak. No significant pseudotranslation is detected.*

¹Intensities estimated from amplitudes.

²Theoretical values of $\langle |L| \rangle$, $\langle L^2 \rangle$ for acentric reflections are 0.5, 0.333 respectively for untwinned datasets, and 0.375, 0.2 for perfectly twinned datasets.

5 Model quality [i](#)

5.1 Standard geometry [i](#)

Bond lengths and bond angles in the following residue types are not validated in this section: SIN, GOL, EPE, BME, ACT

The Z score for a bond length (or angle) is the number of standard deviations the observed value is removed from the expected value. A bond length (or angle) with $|Z| > 5$ is considered an outlier worth inspection. RMSZ is the root-mean-square of all Z scores of the bond lengths (or angles).

Mol	Chain	Bond lengths		Bond angles	
		RMSZ	# Z >5	RMSZ	# Z >5
1	A	1.51	17/6136 (0.3%)	1.25	15/8291 (0.2%)

Chiral center outliers are detected by calculating the chiral volume of a chiral center and verifying if the center is modelled as a planar moiety or with the opposite hand. A planarity outlier is detected by checking planarity of atoms in a peptide group, atoms in a mainchain group or atoms of a sidechain that are expected to be planar.

Mol	Chain	#Chirality outliers	#Planarity outliers
1	A	0	1

The worst 5 of 17 bond length outliers are listed below:

Mol	Chain	Res	Type	Atoms	Z	Observed(Å)	Ideal(Å)
1	A	521	GLY	C-O	7.05	1.30	1.23
1	A	326	LEU	C-O	6.33	1.31	1.24
1	A	467	HIS	CA-C	6.16	1.61	1.52
1	A	591	VAL	CA-CB	6.15	1.60	1.53
1	A	396	ILE	CA-CB	5.93	1.61	1.54

The worst 5 of 15 bond angle outliers are listed below:

Mol	Chain	Res	Type	Atoms	Z	Observed(°)	Ideal(°)
1	A	356	ILE	CA-C-N	-12.78	97.83	122.61
1	A	356	ILE	C-N-CA	-12.78	97.83	122.61
1	A	424	MET	N-CA-C	7.86	121.97	112.38
1	A	357	ASN	N-CA-C	7.45	122.85	112.72
1	A	358	LYS	N-CA-C	7.07	119.67	109.14

There are no chirality outliers.

All (1) planarity outliers are listed below:

Mol	Chain	Res	Type	Group
1	A	150	LYS	Peptide

5.2 Too-close contacts [i](#)

In the following table, the Non-H and H(model) columns list the number of non-hydrogen atoms and hydrogen atoms in the chain respectively. The H(added) column lists the number of hydrogen atoms added and optimized by MolProbity. The Clashes column lists the number of clashes within the asymmetric unit, whereas Symm-Clashes lists symmetry-related clashes.

Mol	Chain	Non-H	H(model)	H(added)	Clashes	Symm-Clashes
1	A	5858	0	5698	140	0
2	A	8	0	10	7	0
3	A	192	0	254	29	0
4	A	15	0	17	0	0
5	A	4	0	3	0	0
6	A	16	0	8	4	0
7	A	688	0	0	18	0
All	All	6781	0	5990	148	0

The all-atom clashscore is defined as the number of clashes found per 1000 atoms (including hydrogen atoms). The all-atom clashscore for this structure is 12.

The worst 5 of 148 close contacts within the same asymmetric unit are listed below, sorted by their clash magnitude.

Atom-1	Atom-2	Interatomic distance (Å)	Clash overlap (Å)
1:A:408[B]:CYS:SG	1:A:458:GLU:HB3	1.71	1.28
1:A:438[B]:GLU:OE2	1:A:440[B]:ARG:NH1	1.72	1.20
1:A:153:ALA:HB1	1:A:154:PRO:HA	1.19	1.19
1:A:438[B]:GLU:OE1	1:A:440[B]:ARG:NH2	1.93	1.00
1:A:153:ALA:HB1	1:A:154:PRO:CA	1.91	0.99

There are no symmetry-related clashes.

5.3 Torsion angles [i](#)

5.3.1 Protein backbone [i](#)

In the following table, the Percentiles column shows the percent Ramachandran outliers of the chain as a percentile score with respect to all X-ray entries followed by that with respect to entries of similar resolution.

The Analysed column shows the number of residues for which the backbone conformation was analysed, and the total number of residues.

Mol	Chain	Analysed	Favoured	Allowed	Outliers	Percentiles
1	A	729/755 (97%)	709 (97%)	14 (2%)	6 (1%)	16 5

5 of 6 Ramachandran outliers are listed below:

Mol	Chain	Res	Type
1	A	8	VAL
1	A	150	LYS
1	A	152	GLY
1	A	153	ALA
1	A	406	VAL

5.3.2 Protein sidechains [i](#)

In the following table, the Percentiles column shows the percent sidechain outliers of the chain as a percentile score with respect to all X-ray entries followed by that with respect to entries of similar resolution.

The Analysed column shows the number of residues for which the sidechain conformation was analysed, and the total number of residues.

Mol	Chain	Analysed	Rotameric	Outliers	Percentiles
1	A	637/650 (98%)	620 (97%)	17 (3%)	39 23

5 of 17 residues with a non-rotameric sidechain are listed below:

Mol	Chain	Res	Type
1	A	550[B]	CYS
1	A	699[B]	GLU
1	A	221	LEU
1	A	358	LYS
1	A	440[A]	ARG

Sometimes sidechains can be flipped to improve hydrogen bonding and reduce clashes. 5 of 20 such sidechains are listed below:

Mol	Chain	Res	Type
1	A	568	ASN
1	A	615	HIS
1	A	676	ASN
1	A	670	ASN

Continued on next page...

Continued from previous page...

Mol	Chain	Res	Type
1	A	273	HIS

5.3.3 RNA [i](#)

There are no RNA molecules in this entry.

5.4 Non-standard residues in protein, DNA, RNA chains [i](#)

There are no non-standard protein/DNA/RNA residues in this entry.

5.5 Carbohydrates [i](#)

There are no oligosaccharides in this entry.

5.6 Ligand geometry [i](#)

38 ligands are modelled in this entry.

In the following table, the Counts columns list the number of bonds (or angles) for which Mogul statistics could be retrieved, the number of bonds (or angles) that are observed in the model and the number of bonds (or angles) that are defined in the Chemical Component Dictionary. The Link column lists molecule types, if any, to which the group is linked. The Z score for a bond length (or angle) is the number of standard deviations the observed value is removed from the expected value. A bond length (or angle) with $|Z| > 2$ is considered an outlier worth inspection. RMSZ is the root-mean-square of all Z scores of the bond lengths (or angles).

Mol	Type	Chain	Res	Link	Bond lengths			Bond angles		
					Counts	RMSZ	$\# Z > 2$	Counts	RMSZ	$\# Z > 2$
3	GOL	A	779	-	5,5,5	0.42	0	5,5,5	0.75	0
5	ACT	A	761	-	3,3,3	0.73	0	3,3,3	1.51	0
3	GOL	A	788	-	5,5,5	0.35	0	5,5,5	0.39	0
3	GOL	A	790	-	5,5,5	0.61	0	5,5,5	1.46	0
3	GOL	A	760	-	5,5,5	0.37	0	5,5,5	1.29	1 (20%)
2	BME	A	756	-	3,3,3	0.85	0	2,2,2	1.34	0
3	GOL	A	782	-	5,5,5	0.64	0	5,5,5	1.01	0
3	GOL	A	785	-	5,5,5	0.52	0	5,5,5	0.43	0
3	GOL	A	757	-	5,5,5	1.13	0	5,5,5	4.16	4 (80%)
3	GOL	A	768	-	5,5,5	0.59	0	5,5,5	0.87	0
3	GOL	A	767	-	5,5,5	0.86	0	5,5,5	0.87	0
3	GOL	A	793	-	5,5,5	0.25	0	5,5,5	0.51	0

Mol	Type	Chain	Res	Link	Bond lengths			Bond angles		
					Counts	RMSZ	# Z > 2	Counts	RMSZ	# Z > 2
3	GOL	A	765	-	5,5,5	0.66	0	5,5,5	1.03	0
3	GOL	A	778	-	5,5,5	0.36	0	5,5,5	0.92	0
3	GOL	A	773	-	5,5,5	0.85	0	5,5,5	0.83	0
3	GOL	A	764	-	5,5,5	0.55	0	5,5,5	1.59	2 (40%)
4	EPE	A	758	-	15,15,15	0.92	0	19,20,20	1.98	5 (26%)
3	GOL	A	772	-	5,5,5	0.43	0	5,5,5	0.50	0
6	SIN	A	766	-	7,7,7	1.19	0	8,8,8	1.14	0
3	GOL	A	769	-	5,5,5	0.44	0	5,5,5	0.56	0
3	GOL	A	783	-	5,5,5	0.44	0	5,5,5	0.32	0
3	GOL	A	759	-	5,5,5	0.29	0	5,5,5	1.00	0
3	GOL	A	781	-	5,5,5	1.44	1 (20%)	5,5,5	1.34	1 (20%)
3	GOL	A	791	-	5,5,5	0.47	0	5,5,5	0.83	0
3	GOL	A	770	-	5,5,5	0.62	0	5,5,5	1.43	1 (20%)
3	GOL	A	780	-	5,5,5	1.38	1 (20%)	5,5,5	2.21	3 (60%)
3	GOL	A	787	-	5,5,5	0.68	0	5,5,5	0.78	0
3	GOL	A	774	-	5,5,5	0.55	0	5,5,5	0.44	0
3	GOL	A	771	-	5,5,5	0.84	0	5,5,5	0.81	0
3	GOL	A	776	-	5,5,5	0.56	0	5,5,5	0.95	0
3	GOL	A	775	-	5,5,5	0.24	0	5,5,5	0.49	0
2	BME	A	763	-	3,3,3	0.37	0	2,2,2	0.81	0
6	SIN	A	789	-	7,7,7	1.39	1 (14%)	8,8,8	2.05	2 (25%)
3	GOL	A	792	-	5,5,5	0.40	0	5,5,5	0.38	0
3	GOL	A	777	-	5,5,5	0.62	0	5,5,5	0.57	0
3	GOL	A	762	-	5,5,5	0.58	0	5,5,5	1.54	1 (20%)
3	GOL	A	786	-	5,5,5	0.44	0	5,5,5	1.76	2 (40%)
3	GOL	A	784	-	5,5,5	0.43	0	5,5,5	0.56	0

In the following table, the Chirals column lists the number of chiral outliers, the number of chiral centers analysed, the number of these observed in the model and the number defined in the Chemical Component Dictionary. Similar counts are reported in the Torsion and Rings columns. '-' means no outliers of that kind were identified.

Mol	Type	Chain	Res	Link	Chirals	Torsions	Rings
3	GOL	A	779	-	-	2/4/4/4	-
3	GOL	A	788	-	-	2/4/4/4	-
3	GOL	A	790	-	-	2/4/4/4	-
3	GOL	A	760	-	-	2/4/4/4	-
2	BME	A	756	-	-	0/1/1/1	-
3	GOL	A	782	-	-	2/4/4/4	-

Continued on next page...

Continued from previous page...

Mol	Type	Chain	Res	Link	Chirals	Torsions	Rings
3	GOL	A	785	-	-	4/4/4/4	-
3	GOL	A	757	-	-	4/4/4/4	-
3	GOL	A	768	-	-	2/4/4/4	-
3	GOL	A	767	-	-	2/4/4/4	-
3	GOL	A	793	-	-	2/4/4/4	-
3	GOL	A	765	-	-	1/4/4/4	-
3	GOL	A	778	-	-	2/4/4/4	-
3	GOL	A	773	-	-	2/4/4/4	-
3	GOL	A	764	-	-	2/4/4/4	-
4	EPE	A	758	-	-	1/9/19/19	0/1/1/1
3	GOL	A	772	-	-	2/4/4/4	-
6	SIN	A	766	-	-	2/5/5/5	-
3	GOL	A	769	-	-	0/4/4/4	-
3	GOL	A	783	-	-	0/4/4/4	-
3	GOL	A	759	-	-	0/4/4/4	-
3	GOL	A	781	-	-	2/4/4/4	-
3	GOL	A	791	-	-	3/4/4/4	-
3	GOL	A	770	-	-	4/4/4/4	-
3	GOL	A	780	-	-	4/4/4/4	-
3	GOL	A	787	-	-	2/4/4/4	-
3	GOL	A	774	-	-	2/4/4/4	-
3	GOL	A	771	-	-	2/4/4/4	-
3	GOL	A	776	-	-	4/4/4/4	-
3	GOL	A	775	-	-	4/4/4/4	-
2	BME	A	763	-	-	1/1/1/1	-
6	SIN	A	789	-	-	5/5/5/5	-
3	GOL	A	792	-	-	0/4/4/4	-
3	GOL	A	777	-	-	2/4/4/4	-
3	GOL	A	762	-	-	4/4/4/4	-
3	GOL	A	786	-	-	2/4/4/4	-
3	GOL	A	784	-	-	4/4/4/4	-

All (3) bond length outliers are listed below:

Mol	Chain	Res	Type	Atoms	Z	Observed(Å)	Ideal(Å)
3	A	781	GOL	O2-C2	-2.75	1.35	1.43
3	A	780	GOL	O2-C2	-2.67	1.35	1.43

Continued on next page...

Continued from previous page...

Mol	Chain	Res	Type	Atoms	Z	Observed(Å)	Ideal(Å)
6	A	789	SIN	O3-C4	2.42	1.30	1.22

The worst 5 of 22 bond angle outliers are listed below:

Mol	Chain	Res	Type	Atoms	Z	Observed(°)	Ideal(°)
3	A	757	GOL	C3-C2-C1	-7.49	84.34	111.80
4	A	758	EPE	C9-N1-C2	-4.55	99.12	111.24
4	A	758	EPE	C5-N4-C3	4.09	117.66	108.84
4	A	758	EPE	O1S-S-C10	3.64	112.22	106.73
3	A	780	GOL	C3-C2-C1	3.51	124.68	111.80

There are no chirality outliers.

5 of 81 torsion outliers are listed below:

Mol	Chain	Res	Type	Atoms
3	A	757	GOL	C1-C2-C3-O3
3	A	767	GOL	O1-C1-C2-O2
3	A	771	GOL	C1-C2-C3-O3
3	A	771	GOL	O2-C2-C3-O3
3	A	772	GOL	C1-C2-C3-O3

There are no ring outliers.

21 monomers are involved in 38 short contacts:

Mol	Chain	Res	Type	Clashes	Symm-Clashes
3	A	788	GOL	3	0
3	A	790	GOL	1	0
2	A	756	BME	7	0
3	A	782	GOL	3	0
3	A	757	GOL	1	0
3	A	768	GOL	1	0
3	A	765	GOL	1	0
3	A	778	GOL	1	0
3	A	773	GOL	1	0
6	A	766	SIN	4	0
3	A	769	GOL	3	0
3	A	781	GOL	1	0
3	A	770	GOL	1	0
3	A	780	GOL	1	0
3	A	787	GOL	4	0
3	A	771	GOL	1	0

Continued on next page...

Continued from previous page...

Mol	Chain	Res	Type	Clashes	Symm-Clashes
3	A	775	GOL	1	0
3	A	792	GOL	1	0
3	A	762	GOL	2	0
3	A	786	GOL	1	0
3	A	784	GOL	2	0

5.7 Other polymers [i](#)

There are no such residues in this entry.

5.8 Polymer linkage issues [i](#)

There are no chain breaks in this entry.

6 Fit of model and data [i](#)

6.1 Protein, DNA and RNA chains [i](#)

In the following table, the column labelled '#RSRZ > 2' contains the number (and percentage) of RSRZ outliers, followed by percent RSRZ outliers for the chain as percentile scores relative to all X-ray entries and entries of similar resolution. The OWAB column contains the minimum, median, 95th percentile and maximum values of the occupancy-weighted average B-factor per residue. The column labelled 'Q < 0.9' lists the number of (and percentage) of residues with an average occupancy less than 0.9.

Mol	Chain	Analysed	<RSRZ>	#RSRZ>2	OWAB(Å ²)	Q<0.9
1	A	693/755 (91%)	-0.53	9 (1%) 75 79	8, 19, 38, 73	38 (5%)

The worst 5 of 9 RSRZ outliers are listed below:

Mol	Chain	Res	Type	RSRZ
1	A	8	VAL	5.3
1	A	152	GLY	4.6
1	A	151	PHE	4.1
1	A	148	ALA	3.6
1	A	7	GLU	3.3

6.2 Non-standard residues in protein, DNA, RNA chains [i](#)

There are no non-standard protein/DNA/RNA residues in this entry.

6.3 Carbohydrates [i](#)

There are no oligosaccharides in this entry.

6.4 Ligands [i](#)

In the following table, the Atoms column lists the number of modelled atoms in the group and the number defined in the chemical component dictionary. The B-factors column lists the minimum, median, 95th percentile and maximum values of B factors of atoms in the group. The column labelled 'Q < 0.9' lists the number of atoms with occupancy less than 0.9.

Mol	Type	Chain	Res	Atoms	RSCC	RSR	B-factors(Å ²)	Q<0.9
6	SIN	A	789	8/8	0.64	0.16	55,58,60,60	0
3	GOL	A	791	6/6	0.72	0.15	51,55,55,56	0

Continued on next page...

Continued from previous page...

Mol	Type	Chain	Res	Atoms	RSCC	RSR	B-factors(\AA^2)	Q<0.9
3	GOL	A	767	6/6	0.72	0.14	37,44,49,51	0
3	GOL	A	772	6/6	0.73	0.16	68,71,71,73	0
3	GOL	A	792	6/6	0.76	0.14	55,59,60,60	0
3	GOL	A	784	6/6	0.77	0.14	46,56,58,59	0
3	GOL	A	773	6/6	0.77	0.14	54,57,58,58	0
6	SIN	A	766	8/8	0.78	0.14	42,51,57,59	0
3	GOL	A	793	6/6	0.78	0.15	66,70,72,72	0
3	GOL	A	778	6/6	0.81	0.17	62,65,69,69	0
3	GOL	A	785	6/6	0.81	0.12	44,54,59,60	0
3	GOL	A	790	6/6	0.81	0.12	41,44,46,47	0
3	GOL	A	782	6/6	0.81	0.14	30,50,54,55	0
3	GOL	A	779	6/6	0.82	0.12	54,55,60,62	0
3	GOL	A	765	6/6	0.83	0.11	35,42,45,49	0
3	GOL	A	788	6/6	0.83	0.13	44,51,53,59	0
3	GOL	A	771	6/6	0.84	0.11	41,46,48,49	0
3	GOL	A	769	6/6	0.84	0.14	35,45,46,47	0
3	GOL	A	770	6/6	0.84	0.14	38,51,52,58	0
3	GOL	A	776	6/6	0.84	0.13	47,52,52,53	0
3	GOL	A	783	6/6	0.85	0.12	64,67,67,67	0
3	GOL	A	787	6/6	0.85	0.10	28,42,46,48	0
3	GOL	A	764	6/6	0.85	0.12	31,46,50,52	0
3	GOL	A	775	6/6	0.86	0.11	42,50,55,58	0
3	GOL	A	777	6/6	0.86	0.11	33,46,49,49	0
3	GOL	A	774	6/6	0.87	0.13	63,64,66,66	0
5	ACT	A	761	4/4	0.88	0.13	63,63,64,64	0
3	GOL	A	780	6/6	0.89	0.12	32,35,42,46	0
3	GOL	A	760	6/6	0.89	0.09	30,36,39,41	0
3	GOL	A	786	6/6	0.90	0.13	20,39,43,46	0
3	GOL	A	768	6/6	0.91	0.10	31,39,48,55	0
3	GOL	A	762	6/6	0.92	0.09	30,38,40,49	0
3	GOL	A	781	6/6	0.92	0.10	19,37,38,44	0
3	GOL	A	757	6/6	0.93	0.09	19,21,32,33	0
4	EPE	A	758	15/15	0.94	0.07	20,23,44,49	0
2	BME	A	756	4/4	0.95	0.10	30,31,32,37	0
2	BME	A	763	4/4	0.96	0.10	29,35,37,45	0
3	GOL	A	759	6/6	0.97	0.06	22,29,32,33	0

6.5 Other polymers [\(i\)](#)

There are no such residues in this entry.