



Full wwPDB X-ray Structure Validation Report ⓘ

Mar 10, 2026 – 08:33 AM UTC

PDB ID : 7AMD / pdb_00007amd
Title : In situ assembly of choline acetyltransferase ligands by a hydrothiolation reaction reveals key determinants for inhibitor design
Authors : Allgardsson, A.; Ekstrom, F.J.; Wiktelius, D.; Bergstrom, T.; Hoster, N.; Akfur, C.; Forsgren, N.; Lejon, C.; Hedenstrom, M.; Linusson, A.
Deposited on : 2020-10-08
Resolution : 2.25 Å(reported)

This is a Full wwPDB X-ray Structure Validation Report for a publicly released PDB entry.

We welcome your comments at validation@mail.wwpdb.org

A user guide is available at

<https://www.wwpdb.org/validation/2017/XrayValidationReportHelp>

with specific help available everywhere you see the ⓘ symbol.

The types of validation reports are described at

<http://www.wwpdb.org/validation/2017/FAQs#types>.

The following versions of software and data (see [references ⓘ](#)) were used in the production of this report:

MolProbity : 4-5-2 with Phenix2.0
Mogul : 2022.3.0, CSD as543be (2022)
Xtrriage (Phenix) : 2.0
EDS : 3.0
Buster-report : wwPDB partial adaption of 1.1.7 (2018)
Percentile statistics : 20250101.v01 (using entries in the PDB archive January 1st 2025)
CCP4 : 9.0.010 (Gargrove)
Density-Fitness : 1.0.12
Ideal geometry (proteins) : Engh & Huber (2001)
Ideal geometry (DNA, RNA) : Parkinson et al. (1996)
Validation Pipeline (wwPDB-VP) : 2.49

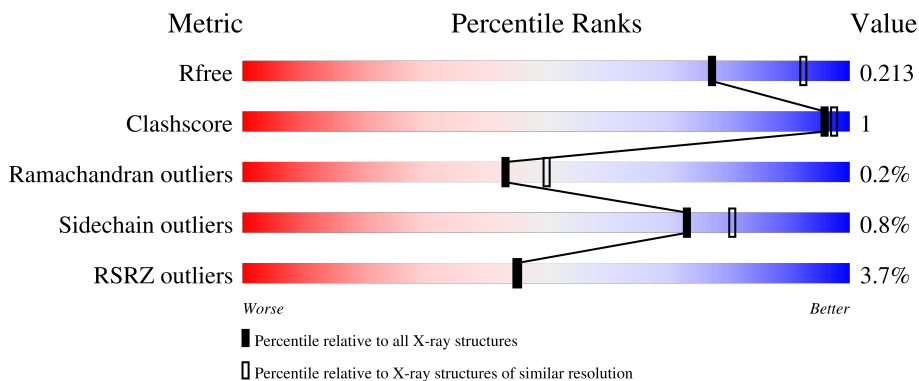
1 Overall quality at a glance

The following experimental techniques were used to determine the structure:

X-RAY DIFFRACTION

The reported resolution of this entry is 2.25 Å.

Percentile scores (ranging between 0-100) for global validation metrics of the entry are shown in the following graphic. The table shows the number of entries on which the scores are based.



Metric	Whole archive (#Entries)	Similar resolution (#Entries, resolution range(Å))
R_{free}	180053	1898 (2.26-2.26)
Clashscore	190562	2005 (2.26-2.26)
Ramachandran outliers	187476	1965 (2.26-2.26)
Sidechain outliers	187428	1966 (2.26-2.26)
RSRZ outliers	180081	1898 (2.26-2.26)

The table below summarises the geometric issues observed across the polymeric chains and their fit to the electron density. The red, orange, yellow and green segments of the lower bar indicate the fraction of residues that contain outliers for ≥ 3 , 2, 1 and 0 types of geometric quality criteria respectively. A grey segment represents the fraction of residues that are not modelled. The numeric value for each fraction is indicated below the corresponding segment, with a dot representing fractions $\leq 5\%$. The upper red bar (where present) indicates the fraction of residues that have poor fit to the electron density. The numeric value is given above the bar.

Mol	Chain	Length	Quality of chain
1	A	612	

2 Entry composition

There are 4 unique types of molecules in this entry. The entry contains 4705 atoms, of which 0 are hydrogens and 0 are deuteriums.

In the tables below, the ZeroOcc column contains the number of atoms modelled with zero occupancy, the AltConf column contains the number of residues with at least one atom in alternate conformation and the Trace column contains the number of residues modelled with at most 2 atoms.

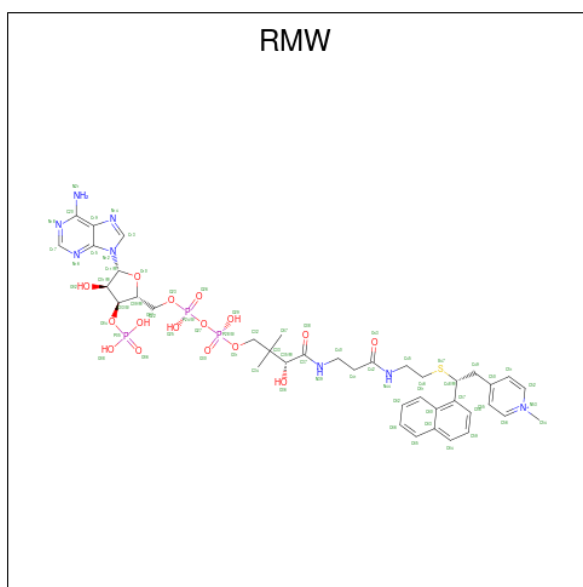
- Molecule 1 is a protein called Choline O-acetyltransferase.

Mol	Chain	Residues	Atoms					ZeroOcc	AltConf	Trace
			Total	C	N	O	S			
1	A	575	4426	2806	777	809	34	0	1	0

There are 19 discrepancies between the modelled and reference sequences:

Chain	Residue	Modelled	Actual	Comment	Reference
A	1	ALA	-	expression tag	UNP P28329
A	225	ALA	GLU	engineered mutation	UNP P28329
A	226	ALA	ASP	engineered mutation	UNP P28329
A	227	ALA	GLU	engineered mutation	UNP P28329
A	343	MET	VAL	conflict	UNP P28329
A	349	PRO	SER	conflict	UNP P28329
A	?	-	SER	deletion	UNP P28329
A	?	-	ARG	deletion	UNP P28329
A	350	GLU	LYS	conflict	UNP P28329
A	352	VAL	ILE	conflict	UNP P28329
A	354	SER	ALA	conflict	UNP P28329
A	355	PRO	ASP	conflict	UNP P28329
A	356	MET	SER	conflict	UNP P28329
A	358	PRO	SER	conflict	UNP P28329
A	?	-	GLU	deletion	UNP P28329
A	518	ALA	LYS	engineered mutation	UNP P28329
A	519	ALA	GLU	engineered mutation	UNP P28329
A	582	ALA	LYS	engineered mutation	UNP P28329
A	583	ALA	GLU	engineered mutation	UNP P28329

- Molecule 2 is $[[[(2 \{R\}, 3 \{S\}, 4 \{R\}, 5 \{R\})-5-(6\text{-aminopurin-9-yl})-4\text{-oxidanyl-3-phosphoxy-oxolan-2-yl}] \text{methoxy-oxidanyl-phosphoryl}] [(3 \{R\})-2,2\text{-dimethyl-4-}[[3\text{-}2\text{-}[(1 \{R\})-2\text{-}(1\text{-methylpyridin-4-yl})-1\text{-naphthalen-1-yl-ethyl}] \text{sulfanylethylamino}] \text{-3-oxidanylidene-propyl}] \text{amino}] \text{-3-oxidanyl-4-oxidanylidene-butyl}] \text{hydrogen phosphate (CCD ID: RMW) (formula: } C_{39}H_{52}N_8O_{16}P_3S)$ (labeled as "Ligand of Interest" by depositor).



Mol	Chain	Residues	Atoms					ZeroOcc	AltConf	
			Total	C	N	O	P			S
2	A	1	67	39	8	16	3	1	0	0

- Molecule 3 is SODIUM ION (CCD ID: NA) (formula: Na).

Mol	Chain	Residues	Atoms		ZeroOcc	AltConf
3	A	2	Total	Na	0	0
			2	2		

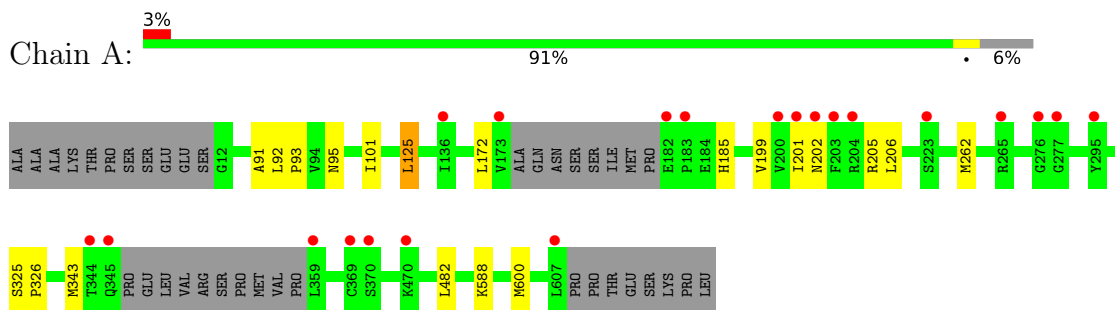
- Molecule 4 is water.

Mol	Chain	Residues	Atoms		ZeroOcc	AltConf
4	A	210	Total	O	0	0
			210	210		

3 Residue-property plots [i](#)

These plots are drawn for all protein, RNA, DNA and oligosaccharide chains in the entry. The first graphic for a chain summarises the proportions of the various outlier classes displayed in the second graphic. The second graphic shows the sequence view annotated by issues in geometry and electron density. Residues are color-coded according to the number of geometric quality criteria for which they contain at least one outlier: green = 0, yellow = 1, orange = 2 and red = 3 or more. A red dot above a residue indicates a poor fit to the electron density ($RSRZ > 2$). Stretches of 2 or more consecutive residues without any outlier are shown as a green connector. Residues present in the sample, but not in the model, are shown in grey.

- Molecule 1: Choline O-acetyltransferase



4 Data and refinement statistics i

Property	Value	Source
Space group	P 21 21 21	Depositor
Cell constants a, b, c, α , β , γ	54.61Å 71.84Å 169.60Å 90.00° 90.00° 90.00°	Depositor
Resolution (Å)	45.92 – 2.25 45.92 – 2.25	Depositor EDS
% Data completeness (in resolution range)	98.4 (45.92-2.25) 98.4 (45.92-2.25)	Depositor EDS
R_{merge}	0.09	Depositor
R_{sym}	(Not available)	Depositor
$\langle I/\sigma(I) \rangle$ ¹	3.46 (at 2.24Å)	Xtrriage
Refinement program	PHENIX 1.14_3260, PHENIX 1.14_3260	Depositor
R, R_{free}	0.177 , 0.210 0.180 , 0.213	Depositor DCC
R_{free} test set	1550 reflections (4.77%)	wwPDB-VP
Wilson B-factor (Å ²)	26.9	Xtrriage
Anisotropy	0.231	Xtrriage
Bulk solvent k_{sol} (e/Å ³), B_{sol} (Å ²)	0.36 , 47.4	EDS
L-test for twinning ²	$\langle L \rangle = 0.47$, $\langle L^2 \rangle = 0.30$	Xtrriage
Estimated twinning fraction	No twinning to report.	Xtrriage
F_o, F_c correlation	0.94	EDS
Total number of atoms	4705	wwPDB-VP
Average B, all atoms (Å ²)	32.0	wwPDB-VP

Xtrriage's analysis on translational NCS is as follows: *The largest off-origin peak in the Patterson function is 4.02% of the height of the origin peak. No significant pseudotranslation is detected.*

¹Intensities estimated from amplitudes.

²Theoretical values of $\langle |L| \rangle$, $\langle L^2 \rangle$ for acentric reflections are 0.5, 0.333 respectively for untwinned datasets, and 0.375, 0.2 for perfectly twinned datasets.

5 Model quality [i](#)

5.1 Standard geometry [i](#)

Bond lengths and bond angles in the following residue types are not validated in this section: RMW, NA

The Z score for a bond length (or angle) is the number of standard deviations the observed value is removed from the expected value. A bond length (or angle) with $|Z| > 5$ is considered an outlier worth inspection. RMSZ is the root-mean-square of all Z scores of the bond lengths (or angles).

Mol	Chain	Bond lengths		Bond angles	
		RMSZ	# Z >5	RMSZ	# Z >5
1	A	0.44	0/4520	0.61	2/6137 (0.0%)

Chiral center outliers are detected by calculating the chiral volume of a chiral center and verifying if the center is modelled as a planar moiety or with the opposite hand. A planarity outlier is detected by checking planarity of atoms in a peptide group, atoms in a mainchain group or atoms of a sidechain that are expected to be planar.

Mol	Chain	#Chirality outliers	#Planarity outliers
1	A	0	1

There are no bond length outliers.

All (2) bond angle outliers are listed below:

Mol	Chain	Res	Type	Atoms	Z	Observed($^{\circ}$)	Ideal($^{\circ}$)
1	A	201	ILE	CA-C-N	7.28	135.44	121.54
1	A	201	ILE	C-N-CA	7.28	135.44	121.54

There are no chirality outliers.

All (1) planarity outliers are listed below:

Mol	Chain	Res	Type	Group
1	A	205	ARG	Sidechain

5.2 Too-close contacts [i](#)

In the following table, the Non-H and H(model) columns list the number of non-hydrogen atoms and hydrogen atoms in the chain respectively. The H(added) column lists the number of hydrogen atoms added and optimized by MolProbity. The Clashes column lists the number of clashes within the asymmetric unit, whereas Symm-Clashes lists symmetry-related clashes.

Mol	Chain	Non-H	H(model)	H(added)	Clashes	Symm-Clashes
1	A	4426	0	4357	10	0
2	A	67	0	0	0	0
3	A	2	0	0	0	0
4	A	210	0	0	0	0
All	All	4705	0	4357	10	0

The all-atom clashscore is defined as the number of clashes found per 1000 atoms (including hydrogen atoms). The all-atom clashscore for this structure is 1.

All (10) close contacts within the same asymmetric unit are listed below, sorted by their clash magnitude.

Atom-1	Atom-2	Interatomic distance (Å)	Clash overlap (Å)
1:A:125:LEU:HD21	1:A:199:VAL:HB	1.74	0.70
1:A:482:LEU:HD11	1:A:600:MET:HE3	1.92	0.50
1:A:125:LEU:HD11	1:A:199:VAL:HG21	1.93	0.50
1:A:91:ALA:O	1:A:95:ASN:HB2	2.16	0.46
1:A:172:LEU:HD12	1:A:172:LEU:HA	1.85	0.44
1:A:185:HIS:CE1	1:A:262:MET:HE3	2.53	0.43
1:A:92:LEU:N	1:A:93:PRO:CD	2.82	0.43
1:A:101:ILE:HD12	1:A:101:ILE:N	2.35	0.42
1:A:93:PRO:O	1:A:95:ASN:N	2.50	0.41
1:A:325:SER:N	1:A:326:PRO:CD	2.84	0.41

There are no symmetry-related clashes.

5.3 Torsion angles [i](#)

5.3.1 Protein backbone [i](#)

In the following table, the Percentiles column shows the percent Ramachandran outliers of the chain as a percentile score with respect to all X-ray entries followed by that with respect to entries of similar resolution.

The Analysed column shows the number of residues for which the backbone conformation was analysed, and the total number of residues.

Mol	Chain	Analysed	Favoured	Allowed	Outliers	Percentiles
1	A	570/612 (93%)	553 (97%)	16 (3%)	1 (0%)	43 50

All (1) Ramachandran outliers are listed below:

Mol	Chain	Res	Type
1	A	202	ASN

5.3.2 Protein sidechains [i](#)

In the following table, the Percentiles column shows the percent sidechain outliers of the chain as a percentile score with respect to all X-ray entries followed by that with respect to entries of similar resolution.

The Analysed column shows the number of residues for which the sidechain conformation was analysed, and the total number of residues.

Mol	Chain	Analysed	Rotameric	Outliers	Percentiles
1	A	472/527 (90%)	468 (99%)	4 (1%)	73 80

All (4) residues with a non-rotameric sidechain are listed below:

Mol	Chain	Res	Type
1	A	125	LEU
1	A	206	LEU
1	A	343	MET
1	A	588	LYS

Sometimes sidechains can be flipped to improve hydrogen bonding and reduce clashes. All (4) such sidechains are listed below:

Mol	Chain	Res	Type
1	A	134	HIS
1	A	169	GLN
1	A	192	ASN
1	A	567	GLN

5.3.3 RNA [i](#)

There are no RNA molecules in this entry.

5.4 Non-standard residues in protein, DNA, RNA chains [i](#)

There are no non-standard protein/DNA/RNA residues in this entry.

5.5 Carbohydrates [i](#)

There are no oligosaccharides in this entry.

5.6 Ligand geometry [i](#)

Of 3 ligands modelled in this entry, 2 are monoatomic - leaving 1 for Mogul analysis.

In the following table, the Counts columns list the number of bonds (or angles) for which Mogul statistics could be retrieved, the number of bonds (or angles) that are observed in the model and the number of bonds (or angles) that are defined in the Chemical Component Dictionary. The Link column lists molecule types, if any, to which the group is linked. The Z score for a bond length (or angle) is the number of standard deviations the observed value is removed from the expected value. A bond length (or angle) with $|Z| > 2$ is considered an outlier worth inspection. RMSZ is the root-mean-square of all Z scores of the bond lengths (or angles).

Mol	Type	Chain	Res	Link	Bond lengths			Bond angles		
					Counts	RMSZ	# Z > 2	Counts	RMSZ	# Z > 2
2	RMW	A	701	-	69,72,72	2.34	17 (24%)	97,106,106	1.59	16 (16%)

In the following table, the Chirals column lists the number of chiral outliers, the number of chiral centers analysed, the number of these observed in the model and the number defined in the Chemical Component Dictionary. Similar counts are reported in the Torsion and Rings columns. '-' means no outliers of that kind were identified.

Mol	Type	Chain	Res	Link	Chirals	Torsions	Rings
2	RMW	A	701	-	-	10/59/75/75	0/6/6/6

All (17) bond length outliers are listed below:

Mol	Chain	Res	Type	Atoms	Z	Observed(Å)	Ideal(Å)
2	A	701	RMW	C03-C09	-7.17	1.34	1.52
2	A	701	RMW	C42-N44	6.94	1.49	1.33
2	A	701	RMW	C37-N39	5.87	1.47	1.33
2	A	701	RMW	C20-N21	5.64	1.48	1.34
2	A	701	RMW	C01-C11	-5.57	1.36	1.53
2	A	701	RMW	O10-C11	5.57	1.54	1.42
2	A	701	RMW	O10-C09	4.32	1.54	1.45
2	A	701	RMW	C32-C33	3.99	1.59	1.52
2	A	701	RMW	P24-O23	3.20	1.71	1.59
2	A	701	RMW	C57-C48	3.13	1.57	1.52
2	A	701	RMW	P05-O04	2.98	1.64	1.59
2	A	701	RMW	C13-N12	-2.71	1.32	1.37
2	A	701	RMW	C60-C63	-2.53	1.38	1.43

Continued on next page...

Continued from previous page...

Mol	Chain	Res	Type	Atoms	Z	Observed(Å)	Ideal(Å)
2	A	701	RMW	P28-O27	2.47	1.62	1.59
2	A	701	RMW	C01-C03	2.43	1.58	1.53
2	A	701	RMW	C49-C50	2.19	1.56	1.51
2	A	701	RMW	P28-O31	2.16	1.67	1.59

All (16) bond angle outliers are listed below:

Mol	Chain	Res	Type	Atoms	Z	Observed(°)	Ideal(°)
2	A	701	RMW	C19-C15-N16	-4.96	119.88	126.72
2	A	701	RMW	C49-C48-C57	-4.78	104.03	113.12
2	A	701	RMW	N18-C17-N16	-4.61	121.60	128.58
2	A	701	RMW	C01-C11-N12	4.06	123.39	113.30
2	A	701	RMW	C17-N16-C15	3.66	120.76	111.83
2	A	701	RMW	N16-C15-N12	3.56	133.22	127.17
2	A	701	RMW	C15-C19-N14	-3.14	107.00	110.58
2	A	701	RMW	N12-C13-N14	-3.09	109.56	113.94
2	A	701	RMW	O10-C11-N12	-3.01	102.31	108.09
2	A	701	RMW	C19-N14-C13	2.94	108.07	103.45
2	A	701	RMW	O31-C32-C33	-2.71	106.19	110.55
2	A	701	RMW	C15-N12-C13	2.61	108.48	105.74
2	A	701	RMW	C45-N44-C42	-2.26	118.62	122.82
2	A	701	RMW	C01-C03-C09	2.15	107.00	103.24
2	A	701	RMW	C40-C41-C42	2.13	115.95	112.39
2	A	701	RMW	C41-C42-N44	2.13	120.23	116.34

There are no chirality outliers.

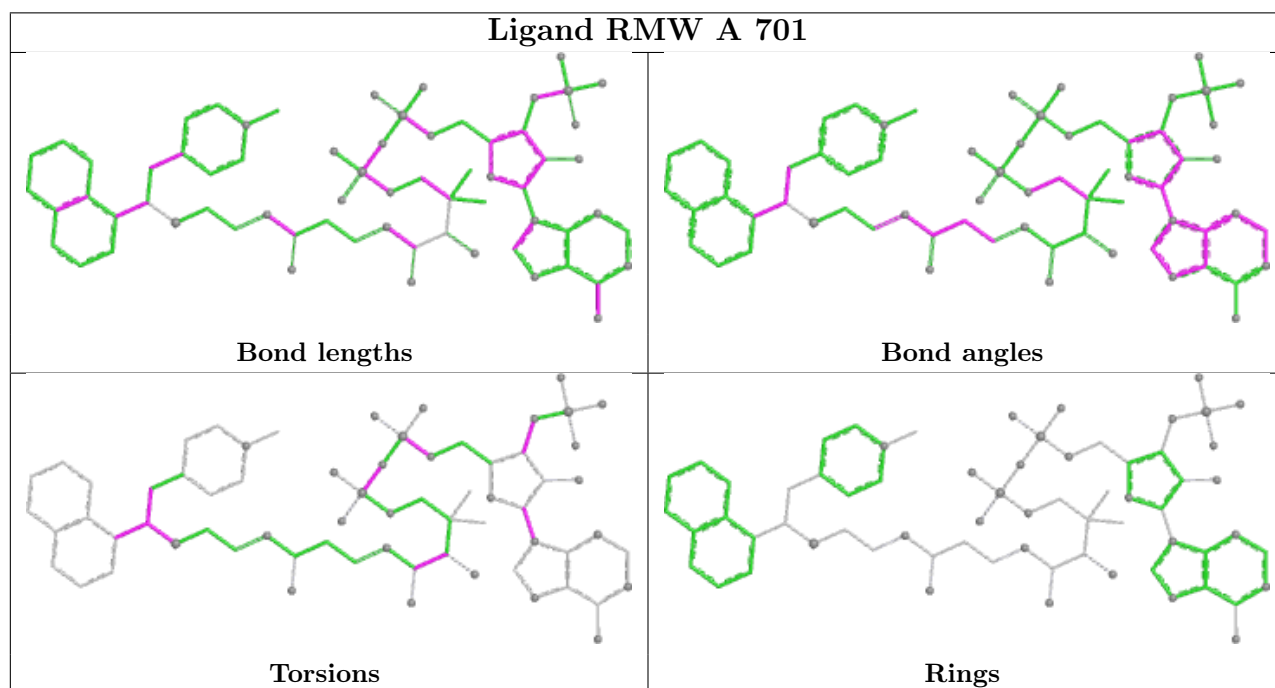
All (10) torsion outliers are listed below:

Mol	Chain	Res	Type	Atoms
2	A	701	RMW	C22-O23-P24-O25
2	A	701	RMW	C22-O23-P24-O26
2	A	701	RMW	C22-O23-P24-O27
2	A	701	RMW	S47-C48-C57-C60
2	A	701	RMW	C57-C48-S47-C46
2	A	701	RMW	C01-C11-N12-C13
2	A	701	RMW	C57-C48-C49-C50
2	A	701	RMW	C09-C03-O04-P05
2	A	701	RMW	O36-C35-C37-N39
2	A	701	RMW	P24-O27-P28-O29

There are no ring outliers.

No monomer is involved in short contacts.

The following is a two-dimensional graphical depiction of Mogul quality analysis of bond lengths, bond angles, torsion angles, and ring geometry for all instances of the Ligand of Interest. In addition, ligands with molecular weight > 250 and outliers as shown on the validation Tables will also be included. For torsion angles, if less than 5% of the Mogul distribution of torsion angles is within 10 degrees of the torsion angle in question, then that torsion angle is considered an outlier. Any bond that is central to one or more torsion angles identified as an outlier by Mogul will be highlighted in the graph. For rings, the root-mean-square deviation (RMSD) between the ring in question and similar rings identified by Mogul is calculated over all ring torsion angles. If the average RMSD is greater than 60 degrees and the minimal RMSD between the ring in question and any Mogul-identified rings is also greater than 60 degrees, then that ring is considered an outlier. The outliers are highlighted in purple. The color gray indicates Mogul did not find sufficient equivalents in the CSD to analyse the geometry.



5.7 Other polymers [i](#)

There are no such residues in this entry.

5.8 Polymer linkage issues [i](#)

There are no chain breaks in this entry.

6 Fit of model and data [i](#)

6.1 Protein, DNA and RNA chains [i](#)

In the following table, the column labelled ‘#RSRZ> 2’ contains the number (and percentage) of RSRZ outliers, followed by percent RSRZ outliers for the chain as percentile scores relative to all X-ray entries and entries of similar resolution. The OWAB column contains the minimum, median, 95th percentile and maximum values of the occupancy-weighted average B-factor per residue. The column labelled ‘Q< 0.9’ lists the number of (and percentage) of residues with an average occupancy less than 0.9.

Mol	Chain	Analysed	<RSRZ>	#RSRZ>2	OWAB(Å ²)	Q<0.9
1	A	575/612 (93%)	0.14	21 (3%) 45 45	16, 29, 55, 85	1 (0%)

All (21) RSRZ outliers are listed below:

Mol	Chain	Res	Type	RSRZ
1	A	202	ASN	7.9
1	A	182	GLU	5.8
1	A	201	ILE	5.5
1	A	183	PRO	5.3
1	A	204	ARG	5.1
1	A	203	PHE	4.8
1	A	344	THR	4.1
1	A	607	LEU	4.0
1	A	200	VAL	3.8
1	A	223	SER	3.1
1	A	369	CYS	2.9
1	A	359	LEU	2.9
1	A	370	SER	2.9
1	A	345	GLN	2.9
1	A	295	TYR	2.8
1	A	276	GLY	2.5
1	A	277	GLY	2.4
1	A	265	ARG	2.3
1	A	173	VAL	2.2
1	A	136	ILE	2.0
1	A	470	LYS	2.0

6.2 Non-standard residues in protein, DNA, RNA chains [i](#)

There are no non-standard protein/DNA/RNA residues in this entry.

6.3 Carbohydrates [i](#)

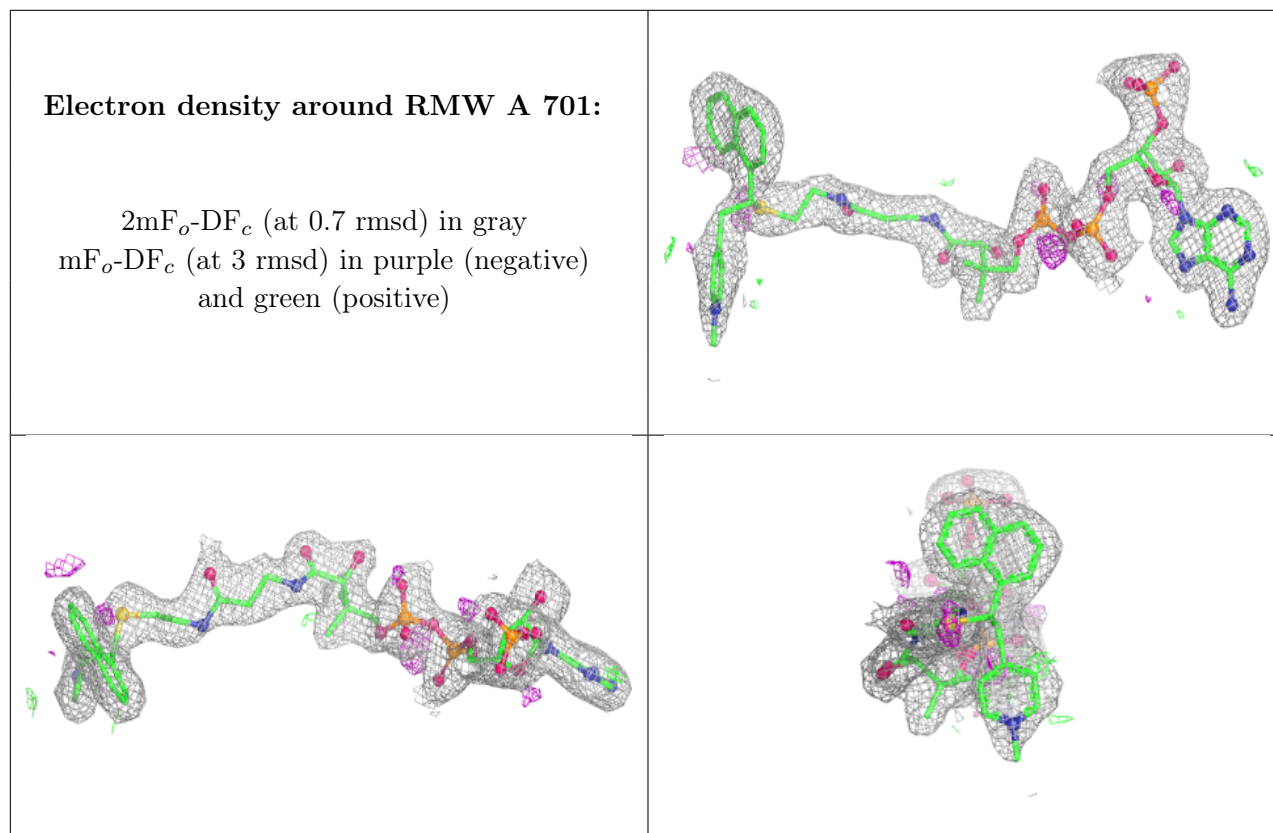
There are no oligosaccharides in this entry.

6.4 Ligands [i](#)

In the following table, the Atoms column lists the number of modelled atoms in the group and the number defined in the chemical component dictionary. The B-factors column lists the minimum, median, 95th percentile and maximum values of B factors of atoms in the group. The column labelled 'Q < 0.9' lists the number of atoms with occupancy less than 0.9.

Mol	Type	Chain	Res	Atoms	RSCC	RSR	B-factors(Å ²)	Q<0.9
3	NA	A	703	1/1	0.90	0.05	22,22,22,22	0
3	NA	A	702	1/1	0.93	0.08	45,45,45,45	0
2	RMW	A	701	67/67	0.96	0.09	18,26,56,62	0

The following is a graphical depiction of the model fit to experimental electron density of all instances of the Ligand of Interest. In addition, ligands with molecular weight > 250 and outliers as shown on the geometry validation Tables will also be included. Each fit is shown from different orientation to approximate a three-dimensional view.



6.5 Other polymers [i](#)

There are no such residues in this entry.