



Full wwPDB X-ray Structure Validation Report ⓘ

Mar 9, 2026 – 10:05 AM UTC

PDB ID : 7APY / pdb_00007apy
Title : Pseudomonas stutzeri nitrous oxide reductase mutant, D576A
Authors : Zhang, L.; Bill, E.; Kroneck, P.M.H.; Einsle, O.
Deposited on : 2020-10-20
Resolution : 1.78 Å(reported)

This is a Full wwPDB X-ray Structure Validation Report for a publicly released PDB entry.

We welcome your comments at validation@mail.wwpdb.org

A user guide is available at

<https://www.wwpdb.org/validation/2017/XrayValidationReportHelp>

with specific help available everywhere you see the ⓘ symbol.

The types of validation reports are described at

<http://www.wwpdb.org/validation/2017/FAQs#types>.

The following versions of software and data (see [references ⓘ](#)) were used in the production of this report:

MolProbity : 4-5-2 with Phenix2.0
Mogul : 2022.3.0, CSD as543be (2022)
Xtrriage (Phenix) : 2.0
EDS : 3.0
Buster-report : wwPDB partial adaption of 1.1.7 (2018)
Percentile statistics : 20250101.v01 (using entries in the PDB archive January 1st 2025)
CCP4 : 9.0.010 (Gargrove)
Density-Fitness : 1.0.12
Ideal geometry (proteins) : Engh & Huber (2001)
Ideal geometry (DNA, RNA) : Parkinson et al. (1996)
Validation Pipeline (wwPDB-VP) : 2.49

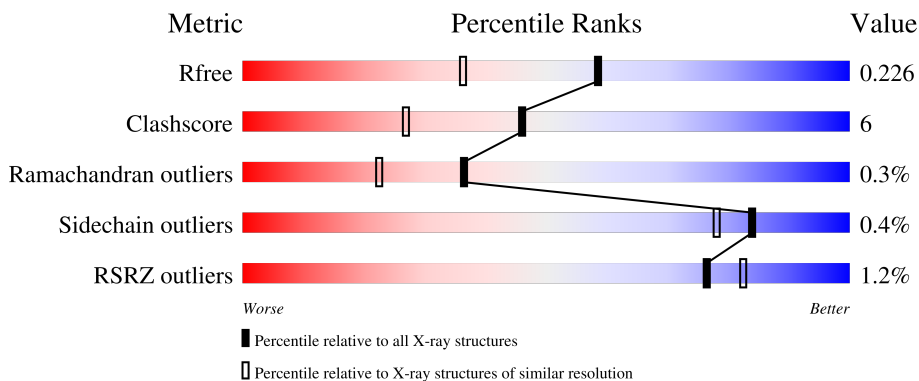
1 Overall quality at a glance

The following experimental techniques were used to determine the structure:

X-RAY DIFFRACTION


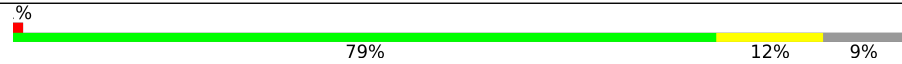
The reported resolution of this entry is 1.78 Å.

Percentile scores (ranging between 0-100) for global validation metrics of the entry are shown in the following graphic. The table shows the number of entries on which the scores are based.



Metric	Whole archive (#Entries)	Similar resolution (#Entries, resolution range(Å))
R_{free}	180053	1365 (1.78-1.78)
Clashscore	190562	1395 (1.78-1.78)
Ramachandran outliers	187476	1382 (1.78-1.78)
Sidechain outliers	187428	1382 (1.78-1.78)
RSRZ outliers	180081	1365 (1.78-1.78)

The table below summarises the geometric issues observed across the polymeric chains and their fit to the electron density. The red, orange, yellow and green segments of the lower bar indicate the fraction of residues that contain outliers for ≥ 3 , 2, 1 and 0 types of geometric quality criteria respectively. A grey segment represents the fraction of residues that are not modelled. The numeric value for each fraction is indicated below the corresponding segment, with a dot representing fractions $\leq 5\%$. The upper red bar (where present) indicates the fraction of residues that have poor fit to the electron density. The numeric value is given above the bar.

Mol	Chain	Length	Quality of chain
1	A	646	 .% 81% 10% 9%
1	B	646	 .% 79% 12% 9%

The following table lists non-polymeric compounds, carbohydrate monomers and non-standard residues in protein, DNA, RNA chains that are outliers for geometric or electron-density-fit criteria:

Mol	Type	Chain	Res	Chirality	Geometry	Clashes	Electron density
6	FMT	B	706	-	-	X	-
6	FMT	B	707	-	-	X	-
7	CL	A	711	-	-	X	-
7	CL	B	708	-	-	X	-

2 Entry composition [i](#)

There are 10 unique types of molecules in this entry. The entry contains 10286 atoms, of which 0 are hydrogens and 0 are deuteriums.

In the tables below, the ZeroOcc column contains the number of atoms modelled with zero occupancy, the AltConf column contains the number of residues with at least one atom in alternate conformation and the Trace column contains the number of residues modelled with at most 2 atoms.

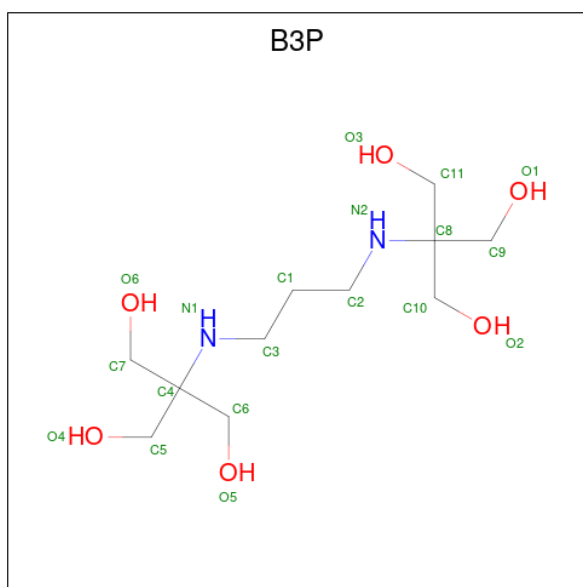
- Molecule 1 is a protein called Nitrous-oxide reductase.

Mol	Chain	Residues	Atoms					ZeroOcc	AltConf	Trace
			Total	C	N	O	S			
1	A	586	4642	2936	799	875	32	0	6	0
1	B	586	4625	2926	799	868	32	0	2	0

There are 18 discrepancies between the modelled and reference sequences:

Chain	Residue	Modelled	Actual	Comment	Reference
A	576	ALA	ASP	engineered mutation	UNP P19573
A	639	TRP	-	expression tag	UNP P19573
A	640	SER	-	expression tag	UNP P19573
A	641	HIS	-	expression tag	UNP P19573
A	642	PRO	-	expression tag	UNP P19573
A	643	GLN	-	expression tag	UNP P19573
A	644	PHE	-	expression tag	UNP P19573
A	645	GLU	-	expression tag	UNP P19573
A	646	LYS	-	expression tag	UNP P19573
B	576	ALA	ASP	engineered mutation	UNP P19573
B	639	TRP	-	expression tag	UNP P19573
B	640	SER	-	expression tag	UNP P19573
B	641	HIS	-	expression tag	UNP P19573
B	642	PRO	-	expression tag	UNP P19573
B	643	GLN	-	expression tag	UNP P19573
B	644	PHE	-	expression tag	UNP P19573
B	645	GLU	-	expression tag	UNP P19573
B	646	LYS	-	expression tag	UNP P19573

- Molecule 2 is 2-[3-(2-HYDROXY-1,1-DIHYDROXYMETHYL-ETHYLAMINO)-PROPYLAMINO]-2-HYDROXYMETHYL-PROPANE-1,3-DIOL (CCD ID: B3P) (formula: C₁₁H₂₆N₂O₆).



Mol	Chain	Residues	Atoms			ZeroOcc	AltConf	
			Total	C	N			O
2	A	1	19	11	2	6	0	0
2	B	1	19	11	2	6	0	0

- Molecule 3 is SODIUM ION (CCD ID: NA) (formula: Na).

Mol	Chain	Residues	Atoms		ZeroOcc	AltConf
			Total	Na		
3	A	1	1	1	0	0
3	B	1	1	1	0	0

- Molecule 4 is CALCIUM ION (CCD ID: CA) (formula: Ca).

Mol	Chain	Residues	Atoms		ZeroOcc	AltConf
			Total	Ca		
4	A	1	1	1	0	0
4	B	1	1	1	0	0

- Molecule 5 is POTASSIUM ION (CCD ID: K) (formula: K).

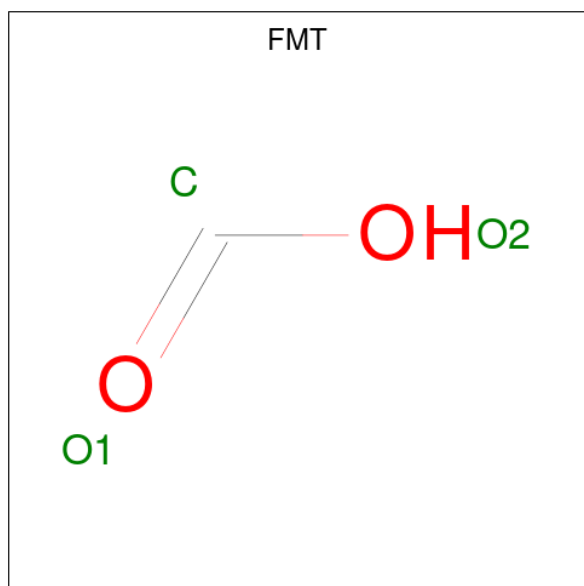
Mol	Chain	Residues	Atoms		ZeroOcc	AltConf
			Total	K		
5	A	1	1	1	0	0

Continued on next page...

Continued from previous page...

Mol	Chain	Residues	Atoms	ZeroOcc	AltConf
5	B	1	Total K 1 1	0	0

- Molecule 6 is FORMIC ACID (CCD ID: FMT) (formula: CH₂O₂).

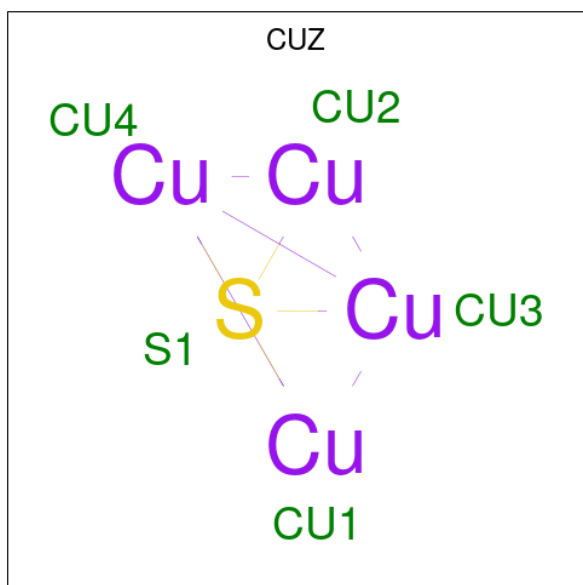


Mol	Chain	Residues	Atoms	ZeroOcc	AltConf
6	A	1	Total C O 3 1 2	0	0
6	A	1	Total C O 3 1 2	0	0
6	A	1	Total C O 3 1 2	0	0
6	A	1	Total C O 3 1 2	0	0
6	A	1	Total C O 3 1 2	0	0
6	A	1	Total C O 3 1 2	0	0
6	B	1	Total C O 3 1 2	0	0
6	B	1	Total C O 3 1 2	0	0
6	B	1	Total C O 3 1 2	0	0

- Molecule 7 is CHLORIDE ION (CCD ID: CL) (formula: Cl).

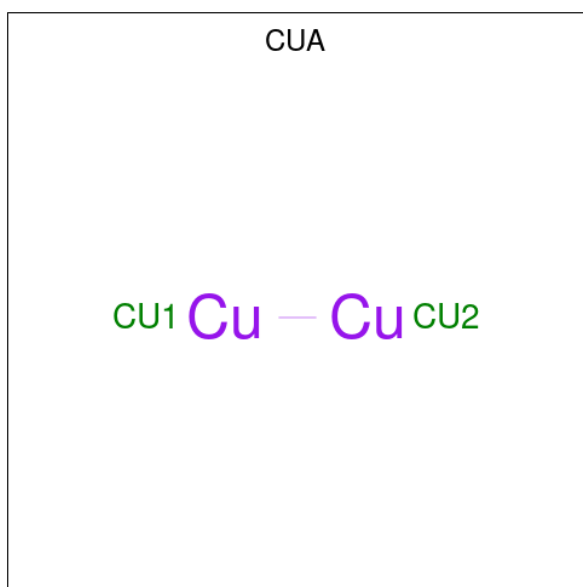
Mol	Chain	Residues	Atoms	ZeroOcc	AltConf
7	A	2	Total Cl 2 2	0	0
7	B	1	Total Cl 1 1	0	0

- Molecule 8 is (MU-4-SULFIDO)-TETRA-NUCLEAR COPPER ION (CCD ID: CUZ) (formula: Cu_4S) (labeled as "Ligand of Interest" by depositor).



Mol	Chain	Residues	Atoms	ZeroOcc	AltConf
8	A	1	Total Cu S 5 4 1	0	0
8	B	1	Total Cu S 5 4 1	0	0

- Molecule 9 is DINUCLEAR COPPER ION (CCD ID: CUA) (formula: Cu_2) (labeled as "Ligand of Interest" by depositor).



Mol	Chain	Residues	Atoms	ZeroOcc	AltConf
9	A	1	Total Cu 2 2	0	0
9	B	1	Total Cu 2 2	0	0

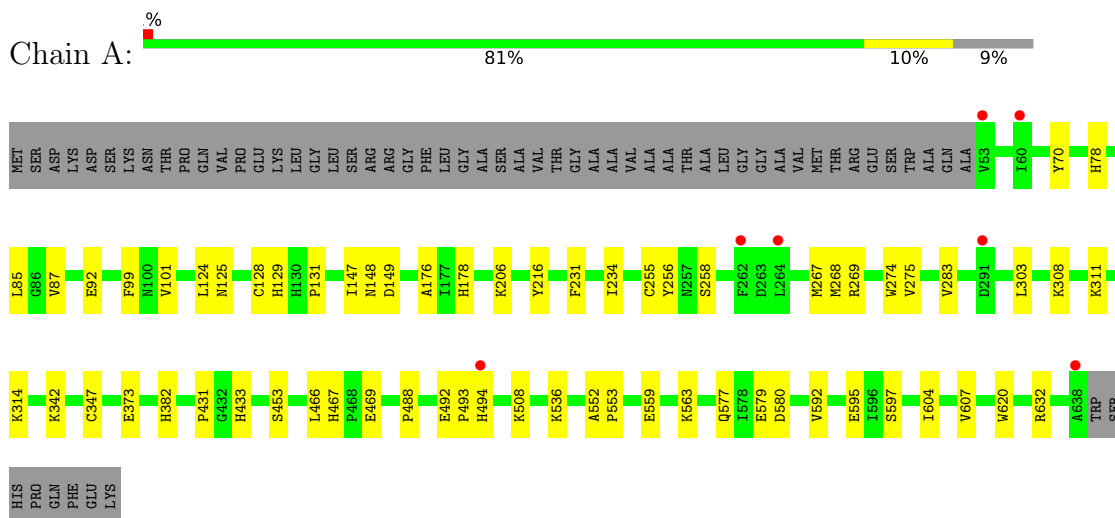
- Molecule 10 is water.

Mol	Chain	Residues	Atoms	ZeroOcc	AltConf
10	A	527	Total O 527 527	0	0
10	B	404	Total O 404 404	0	0

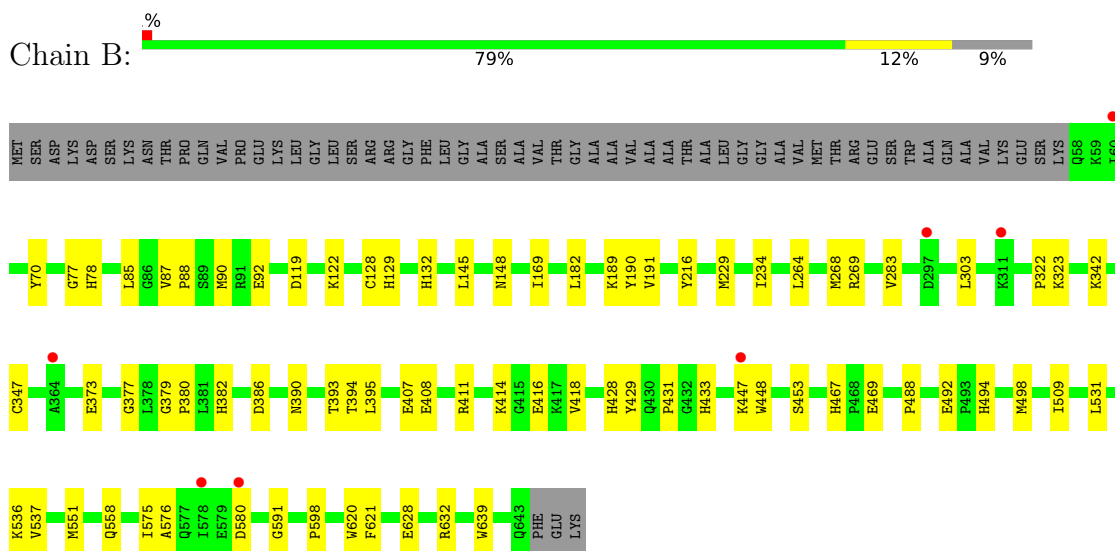
3 Residue-property plots [i](#)

These plots are drawn for all protein, RNA, DNA and oligosaccharide chains in the entry. The first graphic for a chain summarises the proportions of the various outlier classes displayed in the second graphic. The second graphic shows the sequence view annotated by issues in geometry and electron density. Residues are color-coded according to the number of geometric quality criteria for which they contain at least one outlier: green = 0, yellow = 1, orange = 2 and red = 3 or more. A red dot above a residue indicates a poor fit to the electron density ($RSRZ > 2$). Stretches of 2 or more consecutive residues without any outlier are shown as a green connector. Residues present in the sample, but not in the model, are shown in grey.

- Molecule 1: Nitrous-oxide reductase



- Molecule 1: Nitrous-oxide reductase



4 Data and refinement statistics

Property	Value	Source
Space group	P 1 21 1	Depositor
Cell constants a, b, c, α , β , γ	68.96Å 76.63Å 108.56Å 90.00° 93.41° 90.00°	Depositor
Resolution (Å)	68.84 – 1.78 68.84 – 1.78	Depositor EDS
% Data completeness (in resolution range)	70.8 (68.84-1.78) 70.7 (68.84-1.78)	Depositor EDS
R_{merge}	0.18	Depositor
R_{sym}	(Not available)	Depositor
$\langle I/\sigma(I) \rangle$ ¹	1.57 (at 1.77Å)	Xtrriage
Refinement program	PHENIX 1.13_2998	Depositor
R, R_{free}	0.166 , 0.225 0.167 , 0.226	Depositor DCC
R_{free} test set	3851 reflections (3.55%)	wwPDB-VP
Wilson B-factor (Å ²)	22.5	Xtrriage
Anisotropy	0.017	Xtrriage
Bulk solvent k_{sol} (e/Å ³), B_{sol} (Å ²)	0.32 , 47.1	EDS
L-test for twinning ²	$\langle L \rangle = 0.50$, $\langle L^2 \rangle = 0.34$	Xtrriage
Estimated twinning fraction	No twinning to report.	Xtrriage
F_o, F_c correlation	0.96	EDS
Total number of atoms	10286	wwPDB-VP
Average B, all atoms (Å ²)	29.0	wwPDB-VP

Xtrriage's analysis on translational NCS is as follows: *The largest off-origin peak in the Patterson function is 4.21% of the height of the origin peak. No significant pseudotranslation is detected.*

¹Intensities estimated from amplitudes.

²Theoretical values of $\langle |L| \rangle$, $\langle L^2 \rangle$ for acentric reflections are 0.5, 0.333 respectively for untwinned datasets, and 0.375, 0.2 for perfectly twinned datasets.

5 Model quality [i](#)

5.1 Standard geometry [i](#)

Bond lengths and bond angles in the following residue types are not validated in this section: CL, CA, FMT, CUA, K, CUZ, B3P, NA

The Z score for a bond length (or angle) is the number of standard deviations the observed value is removed from the expected value. A bond length (or angle) with $|Z| > 5$ is considered an outlier worth inspection. RMSZ is the root-mean-square of all Z scores of the bond lengths (or angles).

Mol	Chain	Bond lengths		Bond angles	
		RMSZ	# Z >5	RMSZ	# Z >5
1	A	0.43	0/4767	0.66	2/6453 (0.0%)
1	B	0.41	0/4745	0.61	0/6429
All	All	0.42	0/9512	0.63	2/12882 (0.0%)

There are no bond length outliers.

All (2) bond angle outliers are listed below:

Mol	Chain	Res	Type	Atoms	Z	Observed(°)	Ideal(°)
1	A	493	PRO	CA-C-N	-7.37	108.75	122.60
1	A	493	PRO	C-N-CA	-7.37	108.75	122.60

There are no chirality outliers.

There are no planarity outliers.

5.2 Too-close contacts [i](#)

In the following table, the Non-H and H(model) columns list the number of non-hydrogen atoms and hydrogen atoms in the chain respectively. The H(added) column lists the number of hydrogen atoms added and optimized by MolProbity. The Clashes column lists the number of clashes within the asymmetric unit, whereas Symm-Clashes lists symmetry-related clashes.

Mol	Chain	Non-H	H(model)	H(added)	Clashes	Symm-Clashes
1	A	4642	0	4521	49	0
1	B	4625	0	4485	63	0
2	A	19	0	26	0	0
2	B	19	0	26	2	0
3	A	1	0	0	0	0
3	B	1	0	0	0	0
4	A	1	0	0	0	0

Continued on next page...

Continued from previous page...

Mol	Chain	Non-H	H(model)	H(added)	Clashes	Symm-Clashes
4	B	1	0	0	0	0
5	A	1	0	0	0	0
5	B	1	0	0	0	0
6	A	18	0	6	0	0
6	B	9	0	3	4	0
7	A	2	0	0	2	0
7	B	1	0	0	2	0
8	A	5	0	0	0	0
8	B	5	0	0	0	0
9	A	2	0	0	0	0
9	B	2	0	0	0	0
10	A	527	0	0	8	1
10	B	404	0	0	9	1
All	All	10286	0	9067	106	2

The all-atom clashscore is defined as the number of clashes found per 1000 atoms (including hydrogen atoms). The all-atom clashscore for this structure is 6.

All (106) close contacts within the same asymmetric unit are listed below, sorted by their clash magnitude.

Atom-1	Atom-2	Interatomic distance (Å)	Clash overlap (Å)
1:B:536:LYS:HD2	1:B:537:VAL:H	1.47	0.80
1:B:85:LEU:HD22	1:B:92:GLU:HA	1.65	0.77
2:B:701:B3P:HN2	6:B:707:FMT:H	1.49	0.76
1:A:382[B]:HIS:HE1	7:A:711:CL:CL	2.07	0.75
2:B:701:B3P:N2	6:B:707:FMT:H	2.03	0.74
1:A:382[B]:HIS:CE1	7:A:711:CL:CL	2.78	0.73
1:A:577:GLN:NE2	10:A:802:HOH:O	2.22	0.73
1:A:469[A]:GLU:HG3	1:A:492:GLU:HA	1.73	0.71
1:A:508:LYS:NZ	10:A:805:HOH:O	2.23	0.70
1:B:411:ARG:NH1	10:B:802:HOH:O	2.16	0.69
1:B:558:GLN:OE1	10:B:801:HOH:O	2.11	0.68
1:A:466:LEU:HD11	1:B:620:TRP:CZ2	2.29	0.68
1:B:469:GLU:HG3	1:B:492:GLU:HA	1.75	0.67
1:B:414:LYS:NZ	10:B:805:HOH:O	2.27	0.66
1:B:283:VAL:HG13	1:B:303:LEU:HD13	1.78	0.64
1:B:531:LEU:H	6:B:706:FMT:H	1.61	0.63
1:A:592:VAL:HG13	1:A:604:ILE:HD13	1.81	0.62
1:A:308:LYS:HG2	1:A:311:LYS:HZ1	1.65	0.61
1:B:411:ARG:HD2	1:B:416:GLU:OE2	2.02	0.60
1:B:189:LYS:HE2	1:B:190:TYR:CZ	2.36	0.59

Continued on next page...

Continued from previous page...

Atom-1	Atom-2	Interatomic distance (Å)	Clash overlap (Å)
1:A:492:GLU:OE2	1:B:621:PHE:N	2.34	0.59
1:B:85:LEU:HD22	1:B:92:GLU:CA	2.32	0.58
1:A:269:ARG:NH1	10:A:809:HOH:O	2.35	0.58
1:B:269:ARG:HD3	10:B:1014:HOH:O	2.03	0.58
1:A:70:TYR:HB2	1:A:87:VAL:HB	1.86	0.57
1:B:264:LEU:HG	1:B:268:MET:HE2	1.86	0.57
1:A:101:VAL:HG21	1:A:124:LEU:HD22	1.86	0.57
1:B:407:GLU:HG2	10:B:933:HOH:O	2.04	0.57
1:A:283:VAL:HG13	1:A:303:LEU:HD13	1.86	0.56
1:B:408:GLU:HG2	1:B:411:ARG:HH21	1.71	0.55
1:B:85:LEU:CD2	1:B:92:GLU:HA	2.36	0.55
1:B:382[B]:HIS:CE1	7:B:708:CL:CL	2.97	0.54
1:A:563:LYS:NZ	10:A:814:HOH:O	2.40	0.54
1:A:128:CYS:HB3	1:A:148:ASN:O	2.07	0.54
1:B:536:LYS:HD2	1:B:537:VAL:N	2.21	0.53
1:B:632:ARG:HD3	10:B:809:HOH:O	2.09	0.52
1:A:216:TYR:CD1	1:A:234:ILE:HG23	2.45	0.52
1:B:122:LYS:NZ	10:B:821:HOH:O	2.43	0.52
1:A:178:HIS:HB3	10:A:852:HOH:O	2.09	0.52
1:A:508:LYS:HE2	1:A:579:GLU:OE1	2.10	0.52
1:B:70:TYR:HB2	1:B:87:VAL:HB	1.92	0.52
1:B:382[B]:HIS:HE1	7:B:708:CL:CL	2.30	0.52
1:B:551:MET:HE2	1:B:575:ILE:HG13	1.92	0.51
1:A:256:TYR:HE1	1:A:267:MET:HE3	1.75	0.51
1:B:380:PRO:HA	1:B:394:THR:O	2.11	0.50
1:A:267:MET:HE2	1:B:628:GLU:HG3	1.93	0.50
1:A:595:GLU:HB2	1:A:620:TRP:CH2	2.47	0.50
1:B:382[B]:HIS:CE1	1:B:433:HIS:CE1	3.00	0.49
1:B:431:PRO:HA	1:B:453:SER:HA	1.95	0.49
1:A:382[B]:HIS:CE1	1:A:433:HIS:CE1	3.00	0.49
1:A:595:GLU:OE2	1:A:597:SER:OG	2.19	0.49
1:B:347:CYS:O	1:B:373:GLU:HA	2.13	0.48
1:A:85:LEU:HD22	1:A:92:GLU:HA	1.95	0.48
1:B:216:TYR:CD1	1:B:234:ILE:HG23	2.48	0.48
1:A:467:HIS:HB2	1:B:580:ASP:OD1	2.14	0.48
1:A:536:LYS:NZ	10:A:822:HOH:O	2.46	0.48
1:B:428:HIS:HA	1:B:429:TYR:CG	2.48	0.48
1:B:382[B]:HIS:NE2	1:B:433:HIS:NE2	2.61	0.47
1:A:231:PHE:CE1	1:A:283:VAL:HG11	2.49	0.47
1:A:632:ARG:HD3	10:A:1064:HOH:O	2.13	0.47
1:A:206:LYS:HE2	1:B:639:TRP:HZ2	1.79	0.47

Continued on next page...

Continued from previous page...

Atom-1	Atom-2	Interatomic distance (Å)	Clash overlap (Å)
1:B:119[A]:ASP:OD2	10:B:803:HOH:O	2.20	0.47
1:B:531:LEU:H	6:B:706:FMT:C	2.26	0.47
1:A:314:LYS:HE2	1:A:314:LYS:HB2	1.61	0.47
1:B:128:CYS:HB3	1:B:148:ASN:O	2.14	0.47
1:B:182:LEU:HD22	1:B:191:VAL:HG22	1.95	0.47
1:B:408:GLU:HG2	1:B:411:ARG:NH2	2.30	0.47
1:A:256:TYR:CE1	1:A:267:MET:HE3	2.51	0.46
1:A:559:GLU:HA	1:A:632:ARG:O	2.16	0.46
1:B:382[B]:HIS:O	1:B:393:THR:HA	2.15	0.46
1:A:382[A]:HIS:NE2	1:A:433:HIS:CD2	2.84	0.46
1:B:447:LYS:HG2	1:B:448:TRP:CD1	2.51	0.46
1:A:255:CYS:HB3	1:A:274:TRP:CD1	2.51	0.45
1:B:129:HIS:CE1	1:B:494:HIS:CE1	3.05	0.45
1:B:382[A]:HIS:O	1:B:393:THR:HA	2.17	0.45
1:B:87:VAL:HG11	1:B:498:MET:HE3	1.98	0.45
1:B:407:GLU:HB3	10:B:802:HOH:O	2.15	0.45
1:A:125:ASN:OD1	1:B:591:GLY:HA2	2.16	0.45
1:B:379:GLY:N	1:B:380:PRO:HD3	2.32	0.45
1:B:416:GLU:O	1:B:418:VAL:HG12	2.15	0.45
1:B:377:GLY:HA3	1:B:395:LEU:HD13	1.98	0.45
1:A:431:PRO:HA	1:A:453:SER:HA	1.99	0.44
1:B:386:ASP:OD2	1:B:390:ASN:HB2	2.17	0.44
1:B:509:ILE:HG23	1:B:598:PRO:HB2	1.99	0.44
1:A:258:SER:HB2	1:A:274:TRP:CZ3	2.52	0.44
1:B:132:HIS:O	1:B:145:LEU:HD12	2.17	0.43
1:A:580:ASP:OD1	1:B:467:HIS:HB2	2.17	0.43
1:A:131:PRO:HB3	1:A:147:ILE:HD12	2.01	0.43
10:A:830:HOH:O	1:B:467:HIS:HE1	2.00	0.43
1:A:206:LYS:HE2	1:B:639:TRP:CZ2	2.53	0.43
1:B:469:GLU:O	1:B:488:PRO:HA	2.19	0.43
1:B:551:MET:HE1	1:B:576:ALA:HA	1.99	0.43
1:B:88:PRO:O	1:B:90:MET:HG2	2.19	0.43
1:A:347:CYS:O	1:A:373:GLU:HA	2.19	0.42
1:A:382[A]:HIS:NE2	1:A:433:HIS:NE2	2.67	0.42
1:B:322:PRO:HA	1:B:323:LYS:HA	1.85	0.42
1:A:99:PHE:CE2	1:A:149:ASP:HB2	2.55	0.42
1:A:469[A]:GLU:O	1:A:488:PRO:HA	2.19	0.42
1:A:308:LYS:O	1:A:311:LYS:HG2	2.20	0.42
1:A:552:ALA:HA	1:A:553:PRO:HA	1.80	0.41
1:B:77:GLY:HA2	1:B:128:CYS:O	2.21	0.41
1:A:382[A]:HIS:CE1	1:A:433:HIS:NE2	2.88	0.41

Continued on next page...

Continued from previous page...

Atom-1	Atom-2	Interatomic distance (Å)	Clash overlap (Å)
1:A:129:HIS:CD2	1:A:494:HIS:CD2	3.08	0.41
1:B:169:ILE:HD11	1:B:229:MET:HG2	2.02	0.41
1:A:268:MET:HE3	1:A:268:MET:HB2	1.96	0.40
1:B:189:LYS:HE2	1:B:190:TYR:OH	2.22	0.40

All (2) symmetry-related close contacts are listed below. The label for Atom-2 includes the symmetry operator and encoded unit-cell translations to be applied.

Atom-1	Atom-2	Interatomic distance (Å)	Clash overlap (Å)
10:A:820:HOH:O	10:A:1243:HOH:O[1_565]	2.07	0.13
10:B:1082:HOH:O	10:B:1128:HOH:O[2_645]	2.08	0.12

5.3 Torsion angles [i](#)

5.3.1 Protein backbone [i](#)

In the following table, the Percentiles column shows the percent Ramachandran outliers of the chain as a percentile score with respect to all X-ray entries followed by that with respect to entries of similar resolution.

The Analysed column shows the number of residues for which the backbone conformation was analysed, and the total number of residues.

Mol	Chain	Analysed	Favoured	Allowed	Outliers	Percentiles
1	A	590/646 (91%)	566 (96%)	22 (4%)	2 (0%)	36 22
1	B	586/646 (91%)	563 (96%)	22 (4%)	1 (0%)	43 29
All	All	1176/1292 (91%)	1129 (96%)	44 (4%)	3 (0%)	36 22

All (3) Ramachandran outliers are listed below:

Mol	Chain	Res	Type
1	A	342	LYS
1	B	342	LYS
1	A	176	ALA

5.3.2 Protein sidechains [i](#)

In the following table, the Percentiles column shows the percent sidechain outliers of the chain as a percentile score with respect to all X-ray entries followed by that with respect to entries of similar

resolution.

The Analysed column shows the number of residues for which the sidechain conformation was analysed, and the total number of residues.

Mol	Chain	Analysed	Rotameric	Outliers	Percentiles	
1	A	506/544 (93%)	503 (99%)	3 (1%)	78	70
1	B	502/544 (92%)	501 (100%)	1 (0%)	87	83
All	All	1008/1088 (93%)	1004 (100%)	4 (0%)	84	78

All (4) residues with a non-rotameric sidechain are listed below:

Mol	Chain	Res	Type
1	A	78	HIS
1	A	275	VAL
1	A	607	VAL
1	B	78	HIS

Sometimes sidechains can be flipped to improve hydrogen bonding and reduce clashes. All (12) such sidechains are listed below:

Mol	Chain	Res	Type
1	A	111	ASN
1	A	211	GLN
1	A	232	GLN
1	A	241	ASN
1	A	270	ASN
1	A	467	HIS
1	A	577	GLN
1	B	115	HIS
1	B	232	GLN
1	B	419	ASN
1	B	494	HIS
1	B	530	ASN

5.3.3 RNA [i](#)

There are no RNA molecules in this entry.

5.4 Non-standard residues in protein, DNA, RNA chains [i](#)

There are no non-standard protein/DNA/RNA residues in this entry.

5.5 Carbohydrates [i](#)

There are no oligosaccharides in this entry.

5.6 Ligand geometry [i](#)

Of 24 ligands modelled in this entry, 9 are monoatomic - leaving 15 for Mogul analysis.

In the following table, the Counts columns list the number of bonds (or angles) for which Mogul statistics could be retrieved, the number of bonds (or angles) that are observed in the model and the number of bonds (or angles) that are defined in the Chemical Component Dictionary. The Link column lists molecule types, if any, to which the group is linked. The Z score for a bond length (or angle) is the number of standard deviations the observed value is removed from the expected value. A bond length (or angle) with $|Z| > 2$ is considered an outlier worth inspection. RMSZ is the root-mean-square of all Z scores of the bond lengths (or angles).

Mol	Type	Chain	Res	Link	Bond lengths			Bond angles		
					Counts	RMSZ	# Z > 2	Counts	RMSZ	# Z > 2
6	FMT	A	710	-	2,2,2	0.69	0	1,1,1	0.10	0
9	CUA	A	714	1	0,1,1	-	-	-		
6	FMT	B	707	-	2,2,2	0.68	0	1,1,1	0.05	0
9	CUA	B	710	1	0,1,1	-	-	-		
6	FMT	A	707	-	2,2,2	0.62	0	1,1,1	0.06	0
2	B3P	A	701	-	18,18,18	0.82	1 (5%)	23,23,23	1.08	1 (4%)
6	FMT	A	705	-	2,2,2	0.71	0	1,1,1	0.19	0
6	FMT	A	709	-	2,2,2	0.70	0	1,1,1	0.25	0
6	FMT	A	706	-	2,2,2	0.72	0	1,1,1	0.15	0
6	FMT	B	705	-	2,2,2	0.71	0	1,1,1	0.25	0
8	CUZ	A	713	10,1	0,9,9	-	-	-		
8	CUZ	B	709	10,1	0,9,9	-	-	-		
2	B3P	B	701	-	18,18,18	1.02	1 (5%)	23,23,23	0.97	1 (4%)
6	FMT	B	706	-	2,2,2	0.68	0	1,1,1	0.08	0
6	FMT	A	708	-	2,2,2	0.65	0	1,1,1	0.14	0

In the following table, the Chirals column lists the number of chiral outliers, the number of chiral centers analysed, the number of these observed in the model and the number defined in the Chemical Component Dictionary. Similar counts are reported in the Torsion and Rings columns. '-' means no outliers of that kind were identified.

Mol	Type	Chain	Res	Link	Chirals	Torsions	Rings
2	B3P	B	701	-	-	4/28/28/28	-
2	B3P	A	701	-	-	1/28/28/28	-

All (2) bond length outliers are listed below:

Mol	Chain	Res	Type	Atoms	Z	Observed(Å)	Ideal(Å)
2	B	701	B3P	C2-N2	2.30	1.49	1.46
2	A	701	B3P	C3-N1	2.03	1.49	1.46

All (2) bond angle outliers are listed below:

Mol	Chain	Res	Type	Atoms	Z	Observed(°)	Ideal(°)
2	B	701	B3P	C1-C3-N1	-2.22	105.61	110.98
2	A	701	B3P	O5-C6-C4	-2.16	107.29	111.68

There are no chirality outliers.

All (5) torsion outliers are listed below:

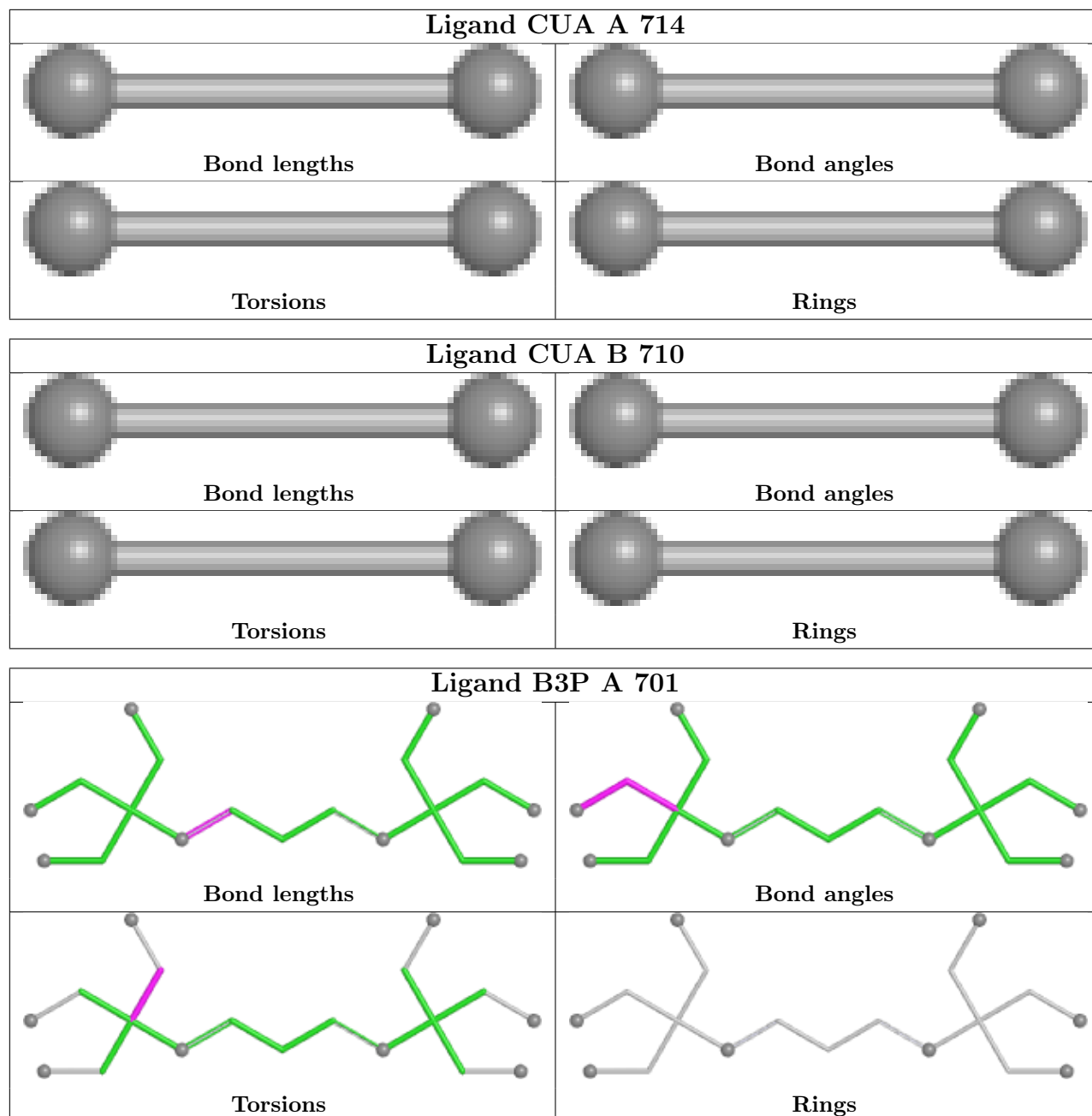
Mol	Chain	Res	Type	Atoms
2	B	701	B3P	C11-C8-N2-C2
2	A	701	B3P	C7-C4-C5-O4
2	B	701	B3P	C10-C8-N2-C2
2	B	701	B3P	C11-C8-C9-O1
2	B	701	B3P	C9-C8-N2-C2

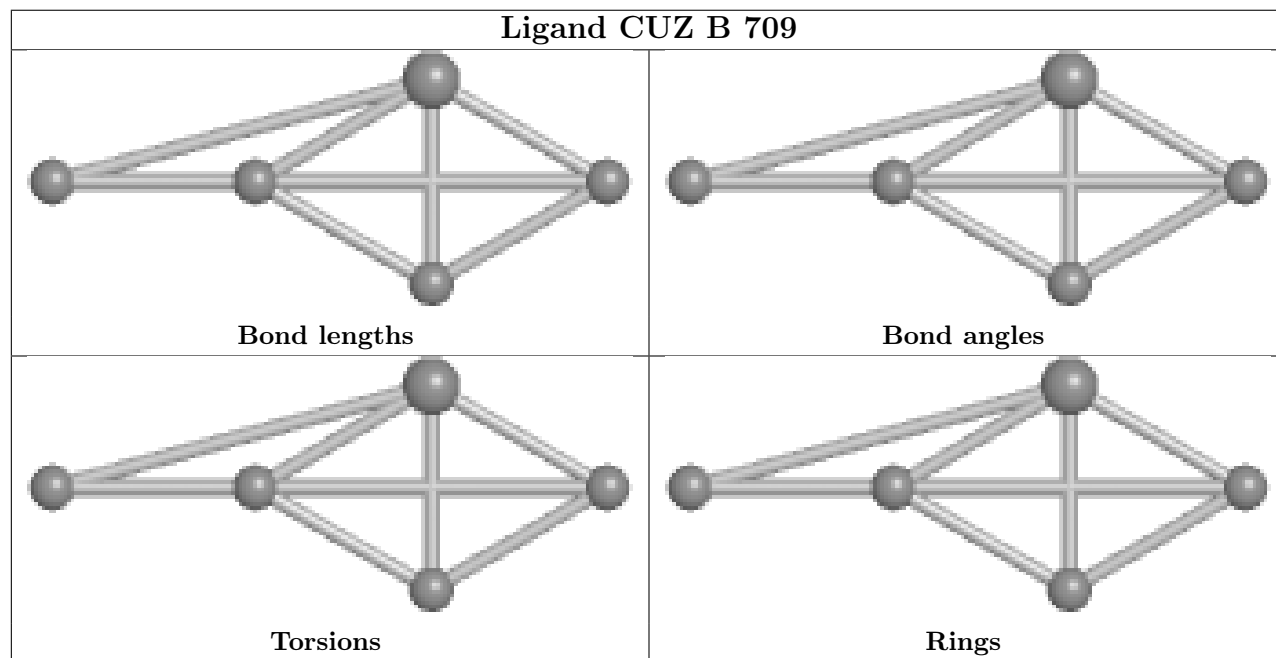
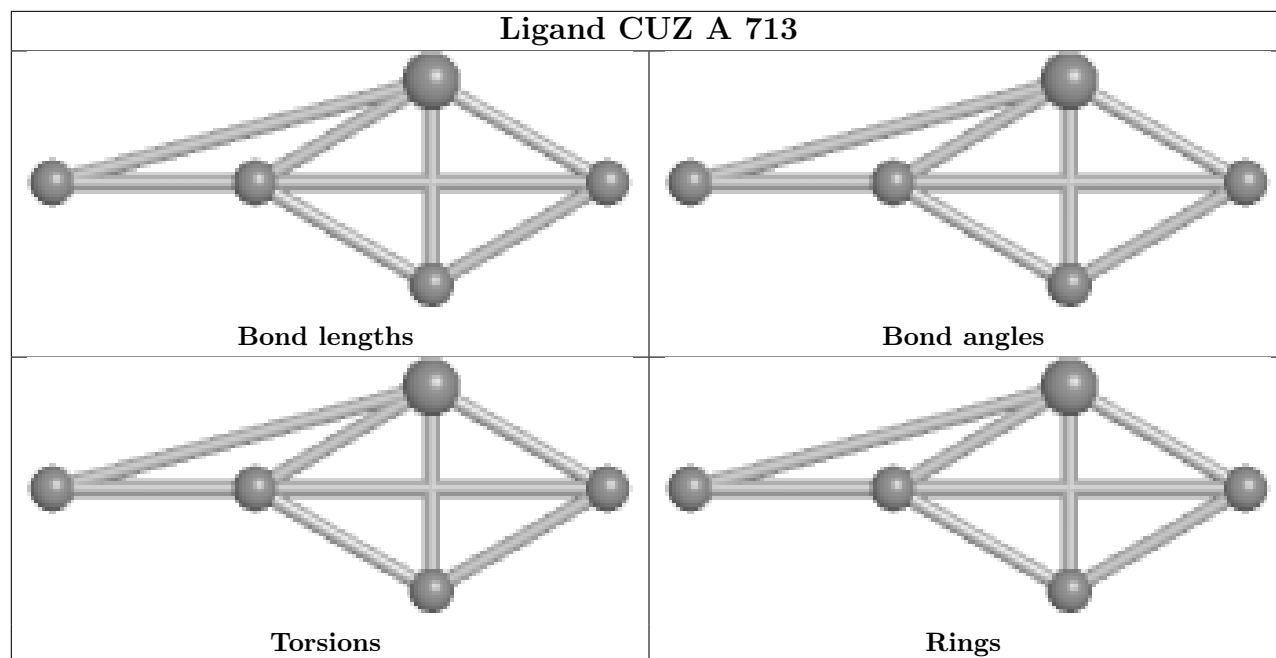
There are no ring outliers.

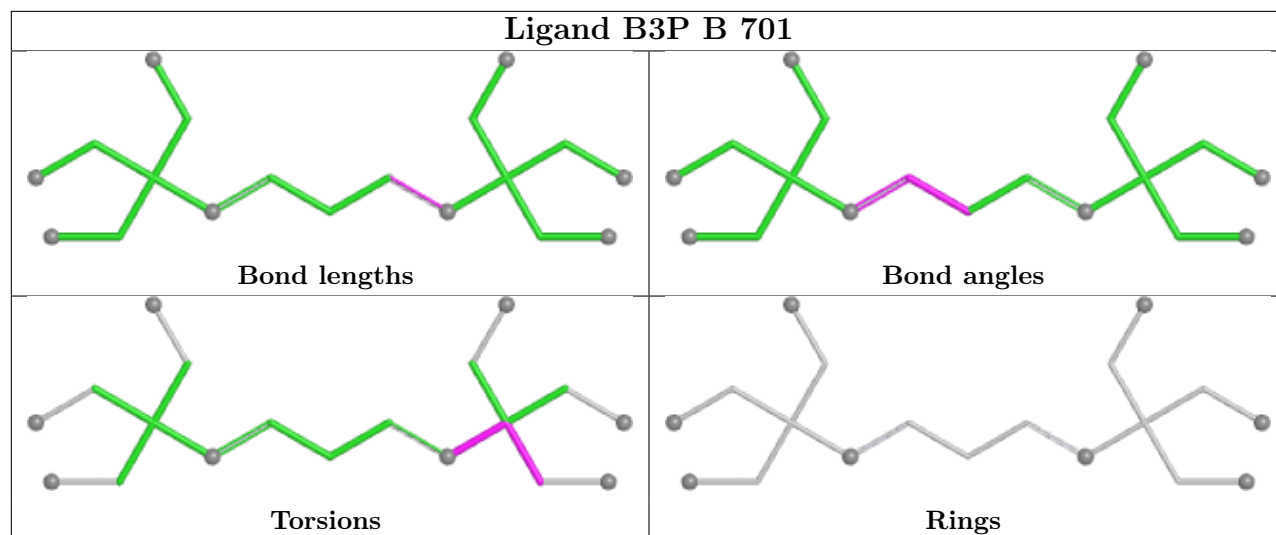
3 monomers are involved in 4 short contacts:

Mol	Chain	Res	Type	Clashes	Symm-Clashes
6	B	707	FMT	2	0
2	B	701	B3P	2	0
6	B	706	FMT	2	0

The following is a two-dimensional graphical depiction of Mogul quality analysis of bond lengths, bond angles, torsion angles, and ring geometry for all instances of the Ligand of Interest. In addition, ligands with molecular weight > 250 and outliers as shown on the validation Tables will also be included. For torsion angles, if less than 5% of the Mogul distribution of torsion angles is within 10 degrees of the torsion angle in question, then that torsion angle is considered an outlier. Any bond that is central to one or more torsion angles identified as an outlier by Mogul will be highlighted in the graph. For rings, the root-mean-square deviation (RMSD) between the ring in question and similar rings identified by Mogul is calculated over all ring torsion angles. If the average RMSD is greater than 60 degrees and the minimal RMSD between the ring in question and any Mogul-identified rings is also greater than 60 degrees, then that ring is considered an outlier. The outliers are highlighted in purple. The color gray indicates Mogul did not find sufficient equivalents in the CSD to analyse the geometry.







5.7 Other polymers [i](#)

There are no such residues in this entry.

5.8 Polymer linkage issues [i](#)

There are no chain breaks in this entry.

6 Fit of model and data [i](#)

6.1 Protein, DNA and RNA chains [i](#)

In the following table, the column labelled ‘#RSRZ > 2’ contains the number (and percentage) of RSRZ outliers, followed by percent RSRZ outliers for the chain as percentile scores relative to all X-ray entries and entries of similar resolution. The OWAB column contains the minimum, median, 95th percentile and maximum values of the occupancy-weighted average B-factor per residue. The column labelled ‘Q < 0.9’ lists the number of (and percentage) of residues with an average occupancy less than 0.9.

Mol	Chain	Analysed	<RSRZ>	#RSRZ>2	OWAB(Å ²)	Q<0.9
1	A	586/646 (90%)	-0.23	7 (1%) 76 82	10, 23, 48, 80	6 (1%)
1	B	586/646 (90%)	-0.01	7 (1%) 76 82	12, 29, 54, 80	2 (0%)
All	All	1172/1292 (90%)	-0.12	14 (1%) 76 82	10, 26, 51, 80	8 (0%)

All (14) RSRZ outliers are listed below:

Mol	Chain	Res	Type	RSRZ
1	A	638	ALA	4.7
1	A	494	HIS	4.2
1	A	53	VAL	4.0
1	B	60	ILE	3.6
1	A	264	LEU	2.6
1	A	60	ILE	2.4
1	A	291	ASP	2.3
1	A	262	PHE	2.3
1	B	578	ILE	2.3
1	B	580	ASP	2.1
1	B	297	ASP	2.1
1	B	311	LYS	2.1
1	B	447	LYS	2.1
1	B	364	ALA	2.0

6.2 Non-standard residues in protein, DNA, RNA chains [i](#)

There are no non-standard protein/DNA/RNA residues in this entry.

6.3 Carbohydrates [i](#)

There are no oligosaccharides in this entry.

6.4 Ligands

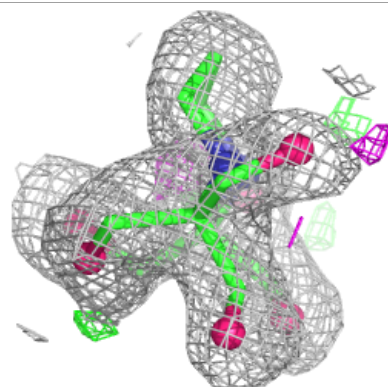
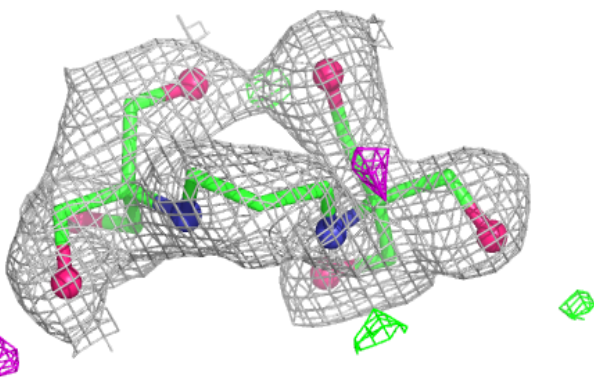
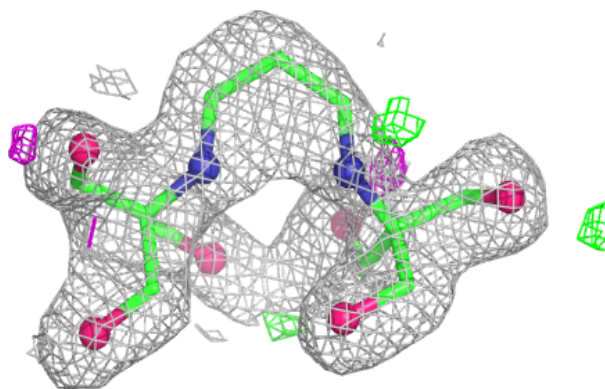
In the following table, the Atoms column lists the number of modelled atoms in the group and the number defined in the chemical component dictionary. The B-factors column lists the minimum, median, 95th percentile and maximum values of B factors of atoms in the group. The column labelled 'Q< 0.9' lists the number of atoms with occupancy less than 0.9.

Mol	Type	Chain	Res	Atoms	RSCC	RSR	B-factors(Å ²)	Q<0.9
6	FMT	A	706	3/3	0.69	0.18	77,77,77,78	0
6	FMT	B	705	3/3	0.70	0.18	74,74,75,77	0
6	FMT	A	710	3/3	0.74	0.13	56,56,59,61	0
6	FMT	A	705	3/3	0.74	0.17	57,57,60,61	0
6	FMT	A	709	3/3	0.79	0.17	55,55,60,61	0
6	FMT	B	706	3/3	0.86	0.14	61,61,62,62	0
5	K	A	704	1/1	0.90	0.12	42,42,42,42	1
6	FMT	A	707	3/3	0.91	0.09	32,32,42,45	0
6	FMT	A	708	3/3	0.91	0.12	31,31,49,52	0
2	B3P	A	701	19/19	0.91	0.09	25,34,42,44	0
6	FMT	B	707	3/3	0.91	0.15	38,38,46,53	0
8	CUZ	A	713	5/5	0.91	0.17	26,33,57,65	4
9	CUA	B	710	2/2	0.92	0.10	35,35,35,43	2
3	NA	B	702	1/1	0.93	0.06	31,31,31,31	1
9	CUA	A	714	2/2	0.94	0.09	34,34,34,34	1
2	B3P	B	701	19/19	0.94	0.07	23,30,38,41	0
8	CUZ	B	709	5/5	0.95	0.09	28,35,43,59	4
3	NA	A	702	1/1	0.96	0.04	26,26,26,26	1
7	CL	A	712	1/1	0.96	0.07	43,43,43,43	0
4	CA	B	703	1/1	0.97	0.03	30,30,30,30	0
7	CL	B	708	1/1	0.97	0.06	29,29,29,29	1
7	CL	A	711	1/1	0.97	0.04	24,24,24,24	1
5	K	B	704	1/1	0.98	0.05	30,30,30,30	1
4	CA	A	703	1/1	0.99	0.02	17,17,17,17	1

The following is a graphical depiction of the model fit to experimental electron density of all instances of the Ligand of Interest. In addition, ligands with molecular weight > 250 and outliers as shown on the geometry validation Tables will also be included. Each fit is shown from different orientation to approximate a three-dimensional view.

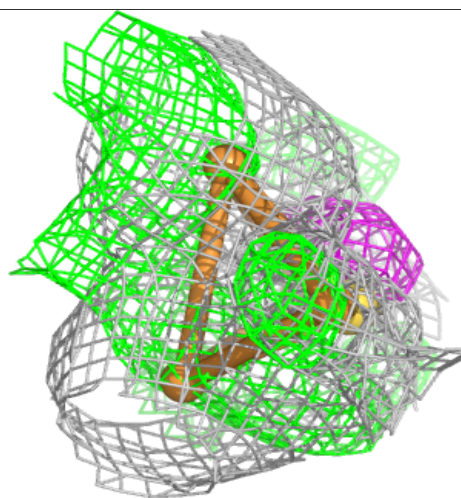
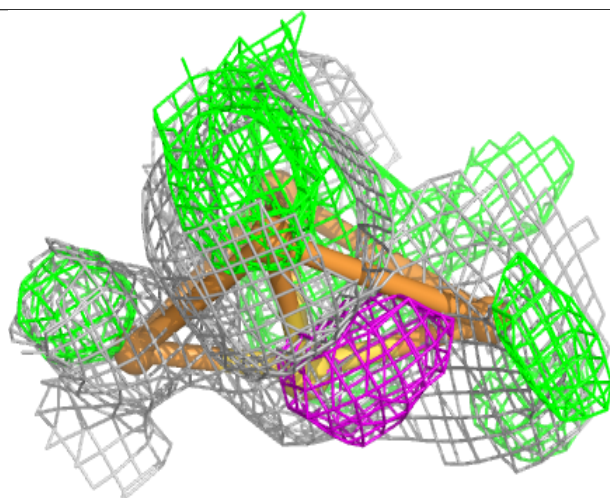
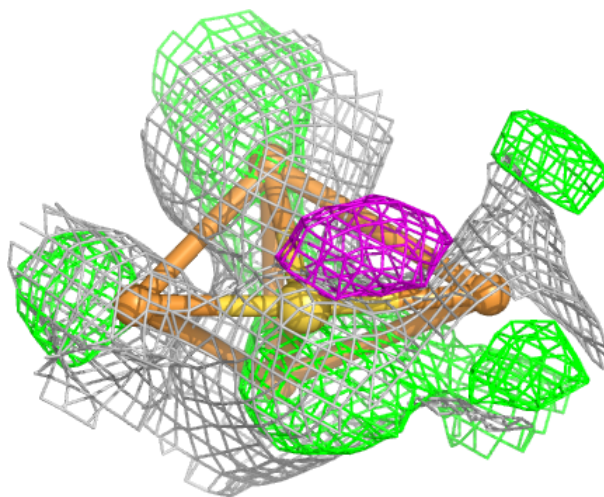
Electron density around B3P A 701:

$2mF_o-DF_c$ (at 0.7 rmsd) in gray
 mF_o-DF_c (at 3 rmsd) in purple (negative)
and green (positive)



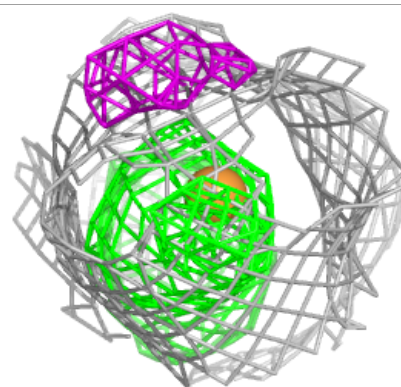
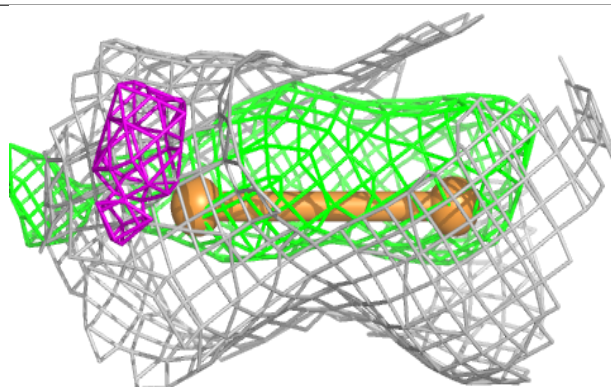
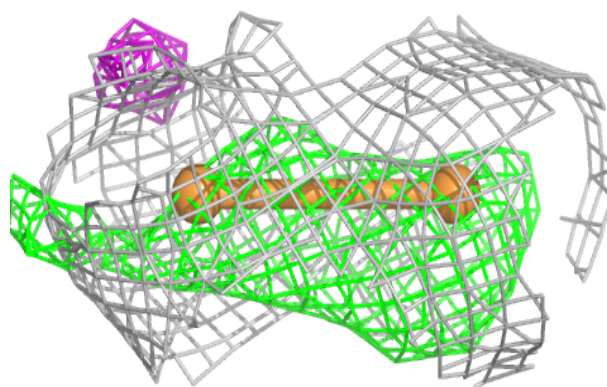
Electron density around CUZ A 713:

$2mF_o-DF_c$ (at 0.7 rmsd) in gray
 mF_o-DF_c (at 3 rmsd) in purple (negative)
and green (positive)

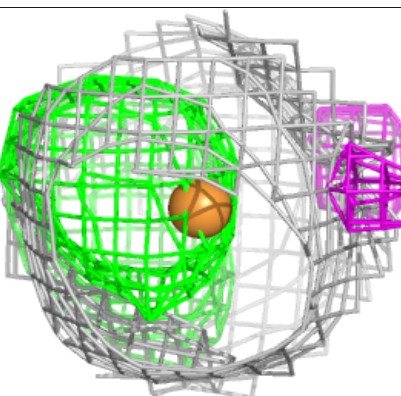
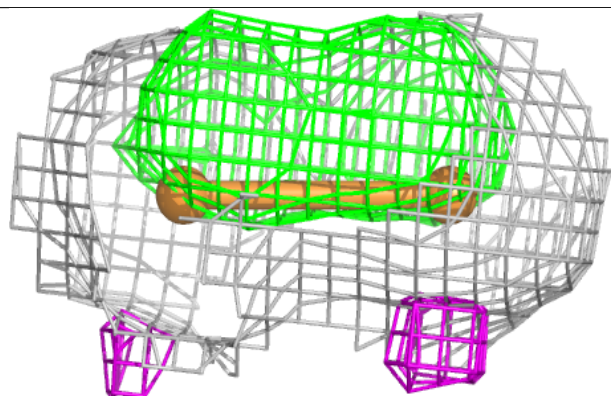
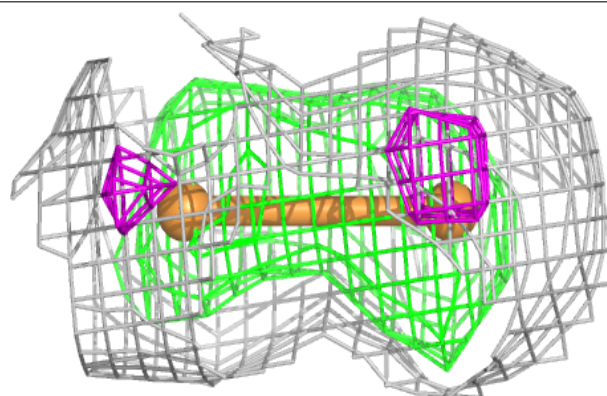


Electron density around CUA B 710:

$2mF_o-DF_c$ (at 0.7 rmsd) in gray
 mF_o-DF_c (at 3 rmsd) in purple (negative)
and green (positive)

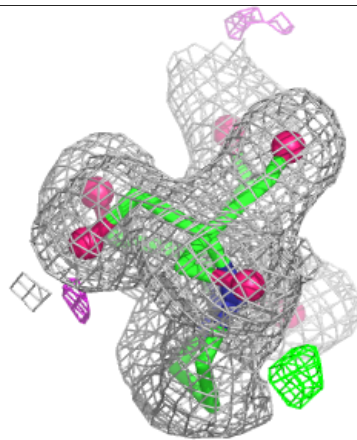
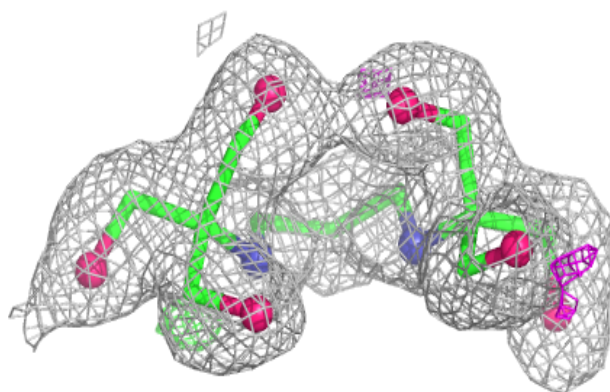
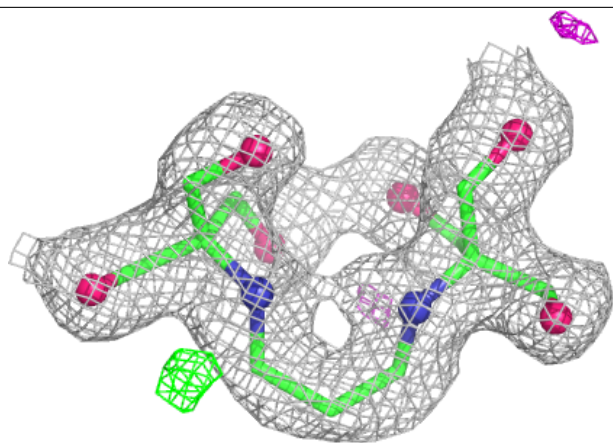
**Electron density around CUA A 714:**

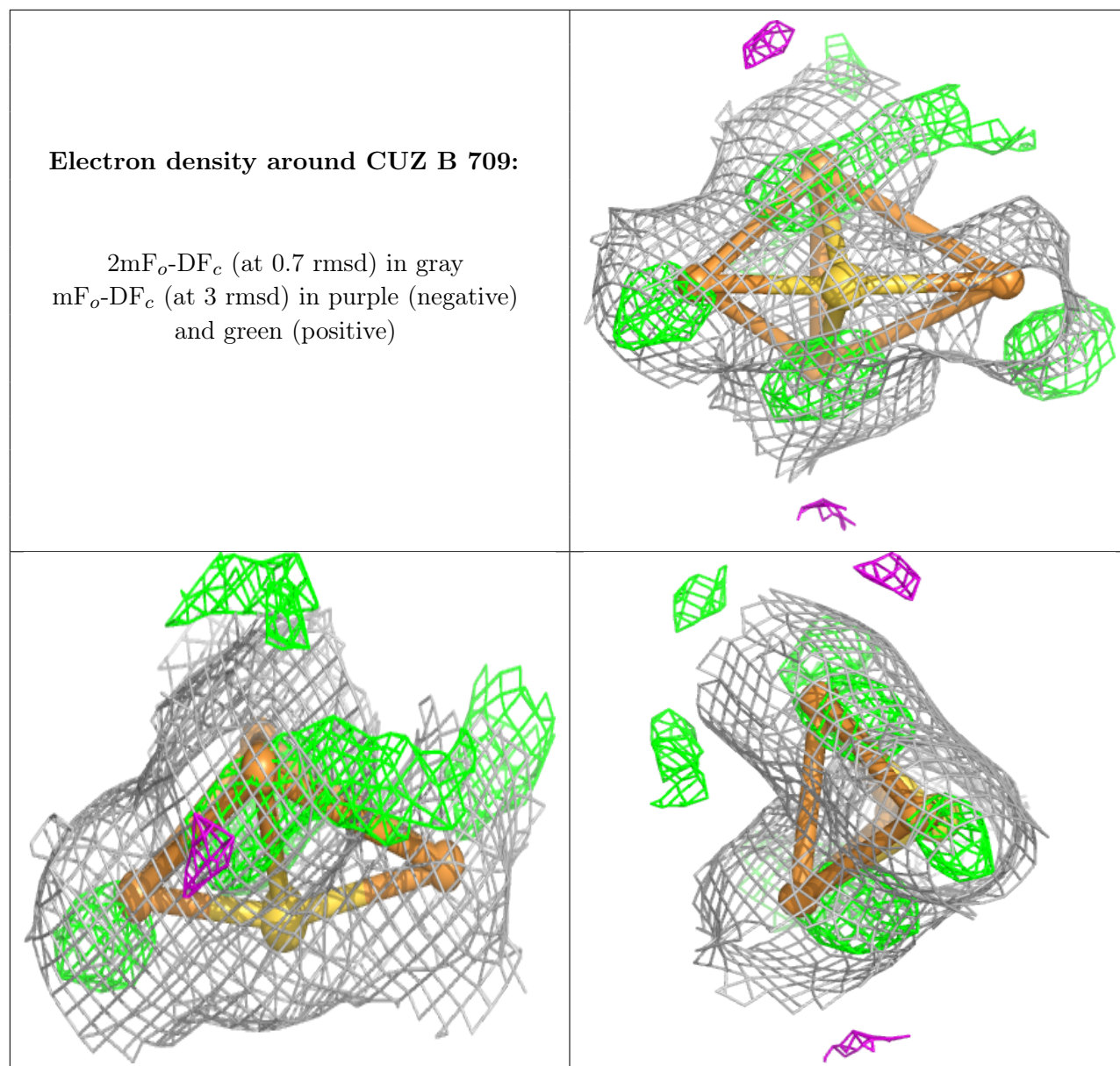
$2mF_o-DF_c$ (at 0.7 rmsd) in gray
 mF_o-DF_c (at 3 rmsd) in purple (negative)
and green (positive)



Electron density around B3P B 701:

$2mF_o-DF_c$ (at 0.7 rmsd) in gray
 mF_o-DF_c (at 3 rmsd) in purple (negative)
and green (positive)





6.5 Other polymers ⓘ

There are no such residues in this entry.