



wwPDB X-ray Structure Validation Summary Report ⓘ

Mar 4, 2026 – 06:04 PM UTC

PDB ID : 2AY4 / pdb_00002ay4
Title : AROMATIC AMINO ACID AMINOTRANSFERASE WITH 3-(P-TOLYL)PROPIONIC ACID
Authors : Okamoto, A.; Hirotsu, K.; Kagamiyama, H.
Deposited on : 1998-08-06
Resolution : 2.20 Å(reported)

This is a wwPDB X-ray Structure Validation Summary Report for a publicly released PDB entry.

We welcome your comments at validation@mail.wwpdb.org

A user guide is available at

<https://www.wwpdb.org/validation/2017/XrayValidationReportHelp>

with specific help available everywhere you see the ⓘ symbol.

The types of validation reports are described at

<http://www.wwpdb.org/validation/2017/FAQs#types>.

The following versions of software and data (see [references ⓘ](#)) were used in the production of this report:

MolProbity : 4-5-2 with Phenix2.0
Mogul : 2022.3.0, CSD as543be (2022)
Xtrriage (Phenix) : **NOT EXECUTED**
EDS : **NOT EXECUTED**
Percentile statistics : 20250101.v01 (using entries in the PDB archive January 1st 2025)
Ideal geometry (proteins) : Engh & Huber (2001)
Ideal geometry (DNA, RNA) : Parkinson et al. (1996)
Validation Pipeline (wwPDB-VP) : 2.49

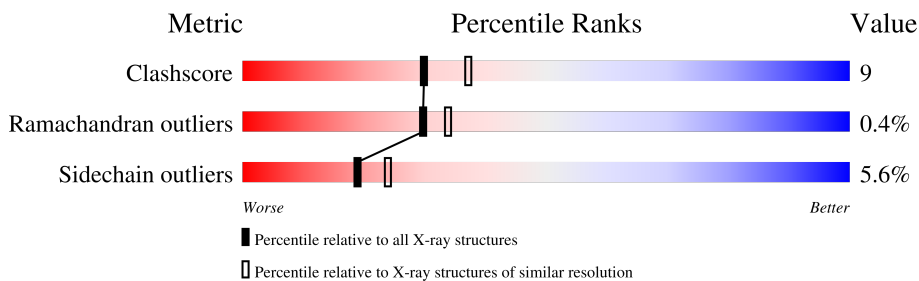
1 Overall quality at a glance

The following experimental techniques were used to determine the structure:

X-RAY DIFFRACTION

The reported resolution of this entry is 2.20 Å.

Percentile scores (ranging between 0-100) for global validation metrics of the entry are shown in the following graphic. The table shows the number of entries on which the scores are based.



Metric	Whole archive (#Entries)	Similar resolution (#Entries, resolution range(Å))
Clashscore	190562	6851 (2.20-2.20)
Ramachandran outliers	187476	6768 (2.20-2.20)
Sidechain outliers	187428	6769 (2.20-2.20)

The table below summarises the geometric issues observed across the polymeric chains and their fit to the electron density. The red, orange, yellow and green segments of the lower bar indicate the fraction of residues that contain outliers for ≥ 3 , 2, 1 and 0 types of geometric quality criteria respectively. A grey segment represents the fraction of residues that are not modelled. The numeric value for each fraction is indicated below the corresponding segment, with a dot representing fractions $\leq 5\%$.

Note EDS was not executed.

Mol	Chain	Length	Quality of chain
1	A	394	
1	B	394	

2 Entry composition [i](#)

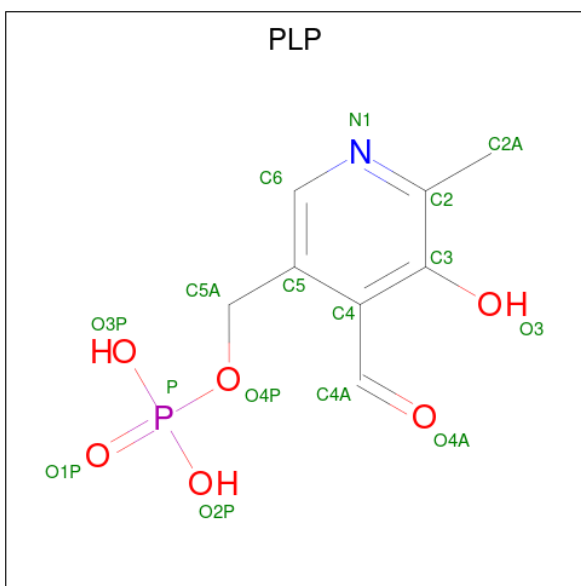
There are 4 unique types of molecules in this entry. The entry contains 6270 atoms, of which 0 are hydrogens and 0 are deuteriums.

In the tables below, the ZeroOcc column contains the number of atoms modelled with zero occupancy, the AltConf column contains the number of residues with at least one atom in alternate conformation and the Trace column contains the number of residues modelled with at most 2 atoms.

- Molecule 1 is a protein called AROMATIC AMINO ACID AMINOTRANSFERASE.

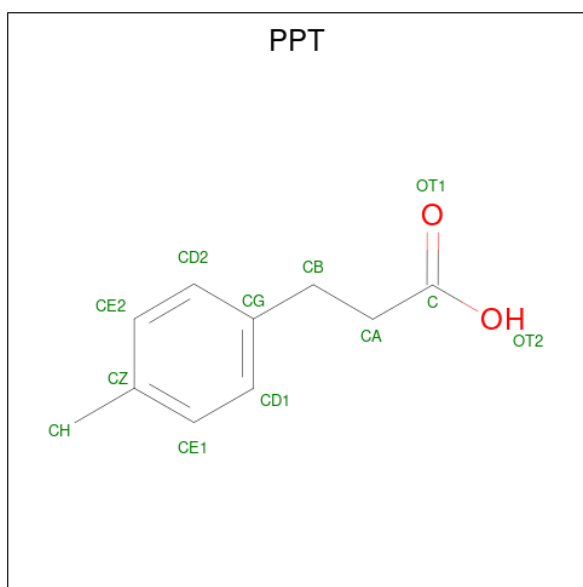
Mol	Chain	Residues	Atoms					ZeroOcc	AltConf	Trace
			Total	C	N	O	S			
1	A	394	Total	C	N	O	S	0	0	0
			2996	1884	527	565	20			
1	B	388	Total	C	N	O	S	0	0	0
			2945	1855	514	556	20			

- Molecule 2 is PYRIDOXAL-5'-PHOSPHATE (CCD ID: PLP) (formula: C₈H₁₀NO₆P).



Mol	Chain	Residues	Atoms					ZeroOcc	AltConf
			Total	C	N	O	P		
2	A	1	Total	C	N	O	P	0	0
			15	8	1	5	1		
2	B	1	Total	C	N	O	P	0	0
			15	8	1	5	1		

- Molecule 3 is 3-(P-TOLYL)PROPIONIC ACID (CCD ID: PPT) (formula: C₁₀H₁₂O₂).



Mol	Chain	Residues	Atoms			ZeroOcc	AltConf
3	B	1	Total	C	O	0	0
			12	10	2		

- Molecule 4 is water.

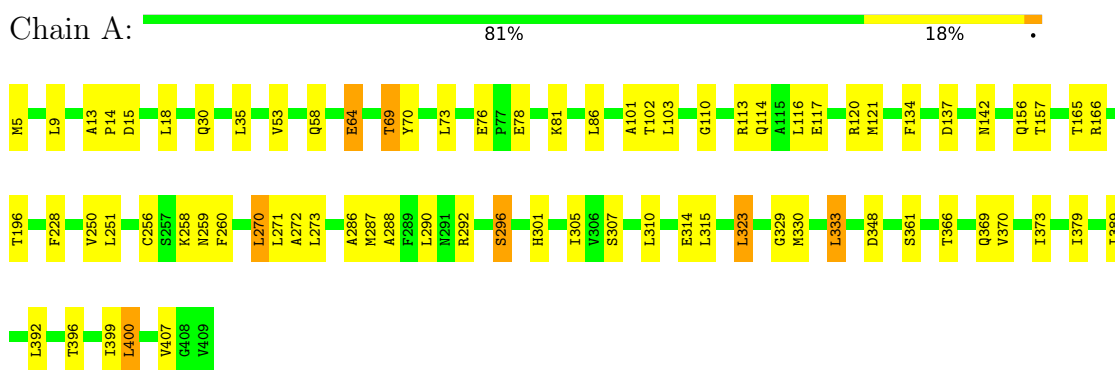
Mol	Chain	Residues	Atoms		ZeroOcc	AltConf
4	A	157	Total	O	0	0
			157	157		
4	B	130	Total	O	0	0
			130	130		

3 Residue-property plots [i](#)

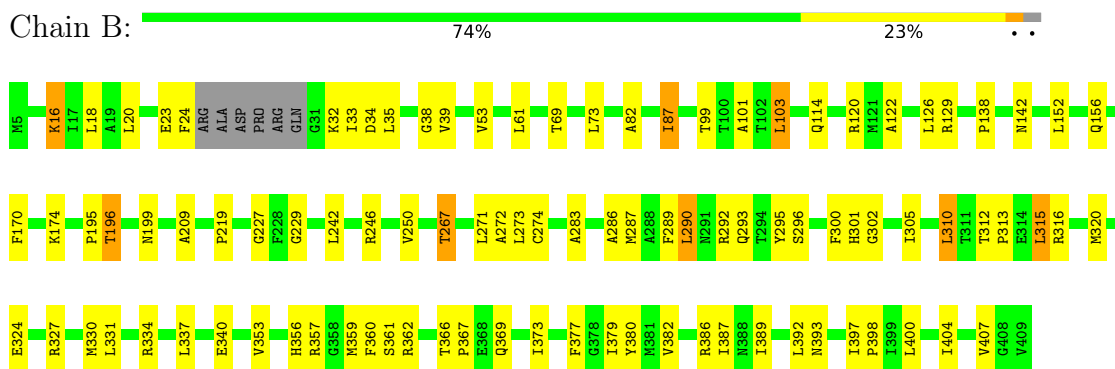
These plots are drawn for all protein, RNA, DNA and oligosaccharide chains in the entry. The first graphic for a chain summarises the proportions of the various outlier classes displayed in the second graphic. The second graphic shows the sequence view annotated by issues in geometry. Residues are color-coded according to the number of geometric quality criteria for which they contain at least one outlier: green = 0, yellow = 1, orange = 2 and red = 3 or more. Stretches of 2 or more consecutive residues without any outlier are shown as a green connector. Residues present in the sample, but not in the model, are shown in grey.

Note EDS was not executed.

- Molecule 1: AROMATIC AMINO ACID AMINOTRANSFERASE



- Molecule 1: AROMATIC AMINO ACID AMINOTRANSFERASE



4 Data and refinement statistics

Xtrriage (Phenix) and EDS were not executed - this section is therefore incomplete.

Property	Value	Source
Space group	P 21 21 21	Depositor
Cell constants a, b, c, α , β , γ	124.20Å 121.79Å 55.17Å 90.00° 90.00° 90.00°	Depositor
Resolution (Å)	6.00 – 2.20	Depositor
% Data completeness (in resolution range)	70.9 (6.00-2.20)	Depositor
R_{merge}	0.07	Depositor
R_{sym}	(Not available)	Depositor
Refinement program	X-PLOR 3.1	Depositor
R, R_{free}	0.181 , 0.230	Depositor
Estimated twinning fraction	No twinning to report.	Xtrriage
Total number of atoms	6270	wwPDB-VP
Average B, all atoms (Å ²)	28.0	wwPDB-VP

5 Model quality [i](#)

5.1 Standard geometry [i](#)

Bond lengths and bond angles in the following residue types are not validated in this section: PPT, PLP

The Z score for a bond length (or angle) is the number of standard deviations the observed value is removed from the expected value. A bond length (or angle) with $|Z| > 5$ is considered an outlier worth inspection. RMSZ is the root-mean-square of all Z scores of the bond lengths (or angles).

Mol	Chain	Bond lengths		Bond angles	
		RMSZ	# Z >5	RMSZ	# Z >5
1	A	0.42	0/3048	0.91	3/4119 (0.1%)
1	B	0.41	0/2995	0.89	5/4046 (0.1%)
All	All	0.41	0/6043	0.90	8/8165 (0.1%)

There are no bond length outliers.

The worst 5 of 8 bond angle outliers are listed below:

Mol	Chain	Res	Type	Atoms	Z	Observed(°)	Ideal(°)
1	A	196	THR	N-CA-C	9.37	122.35	111.11
1	B	196	THR	N-CA-C	8.49	120.31	111.14
1	A	301	HIS	N-CA-C	7.61	120.24	111.11
1	B	300	PHE	N-CA-C	6.93	119.86	111.40
1	B	87	ILE	N-CA-C	6.62	117.24	110.82

There are no chirality outliers.

There are no planarity outliers.

5.2 Too-close contacts [i](#)

In the following table, the Non-H and H(model) columns list the number of non-hydrogen atoms and hydrogen atoms in the chain respectively. The H(added) column lists the number of hydrogen atoms added and optimized by MolProbity. The Clashes column lists the number of clashes within the asymmetric unit, whereas Symm-Clashes lists symmetry-related clashes.

Mol	Chain	Non-H	H(model)	H(added)	Clashes	Symm-Clashes
1	A	2996	0	3004	45	0
1	B	2945	0	2953	64	0
2	A	15	0	7	0	0
2	B	15	0	6	0	0

Continued on next page...

Continued from previous page...

Mol	Chain	Non-H	H(model)	H(added)	Clashes	Symm-Clashes
3	B	12	0	11	3	0
4	A	157	0	0	4	0
4	B	130	0	0	1	0
All	All	6270	0	5981	102	0

The all-atom clashscore is defined as the number of clashes found per 1000 atoms (including hydrogen atoms). The all-atom clashscore for this structure is 9.

The worst 5 of 102 close contacts within the same asymmetric unit are listed below, sorted by their clash magnitude.

Atom-1	Atom-2	Interatomic distance (Å)	Clash overlap (Å)
1:A:270:LEU:HD13	1:A:287:MET:HE3	1.62	0.82
1:B:209:ALA:HB1	1:B:246:ARG:HD2	1.62	0.81
1:B:324:GLU:HA	1:B:327:ARG:HE	1.47	0.79
1:A:69:THR:HG23	1:B:39:VAL:HG11	1.70	0.73
1:B:120:ARG:HD3	1:B:152:LEU:HD11	1.74	0.69

There are no symmetry-related clashes.

5.3 Torsion angles [i](#)

5.3.1 Protein backbone [i](#)

In the following table, the Percentiles column shows the percent Ramachandran outliers of the chain as a percentile score with respect to all X-ray entries followed by that with respect to entries of similar resolution.

The Analysed column shows the number of residues for which the backbone conformation was analysed, and the total number of residues.

Mol	Chain	Analysed	Favoured	Allowed	Outliers	Percentiles	
1	A	392/394 (100%)	375 (96%)	16 (4%)	1 (0%)	36	42
1	B	384/394 (98%)	360 (94%)	22 (6%)	2 (0%)	24	27
All	All	776/788 (98%)	735 (95%)	38 (5%)	3 (0%)	30	34

All (3) Ramachandran outliers are listed below:

Mol	Chain	Res	Type
1	A	296	SER

Continued on next page...

Continued from previous page...

Mol	Chain	Res	Type
1	B	295	TYR
1	B	296	SER

5.3.2 Protein sidechains [i](#)

In the following table, the Percentiles column shows the percent sidechain outliers of the chain as a percentile score with respect to all X-ray entries followed by that with respect to entries of similar resolution.

The Analysed column shows the number of residues for which the sidechain conformation was analysed, and the total number of residues.

Mol	Chain	Analysed	Rotameric	Outliers	Percentiles	
1	A	308/308 (100%)	290 (94%)	18 (6%)	18	22
1	B	303/308 (98%)	287 (95%)	16 (5%)	20	26
All	All	611/616 (99%)	577 (94%)	34 (6%)	19	24

5 of 34 residues with a non-rotameric sidechain are listed below:

Mol	Chain	Res	Type
1	B	313	PRO
1	B	315	LEU
1	B	361	SER
1	A	315	LEU
1	A	314	GLU

Sometimes sidechains can be flipped to improve hydrogen bonding and reduce clashes. 5 of 8 such sidechains are listed below:

Mol	Chain	Res	Type
1	B	395	ASN
1	B	156	GLN
1	A	395	ASN
1	A	336	GLN
1	B	142	ASN

5.3.3 RNA [i](#)

There are no RNA molecules in this entry.

5.4 Non-standard residues in protein, DNA, RNA chains [i](#)

There are no non-standard protein/DNA/RNA residues in this entry.

5.5 Carbohydrates [i](#)

There are no oligosaccharides in this entry.

5.6 Ligand geometry [i](#)

3 ligands are modelled in this entry.

In the following table, the Counts columns list the number of bonds (or angles) for which Mogul statistics could be retrieved, the number of bonds (or angles) that are observed in the model and the number of bonds (or angles) that are defined in the Chemical Component Dictionary. The Link column lists molecule types, if any, to which the group is linked. The Z score for a bond length (or angle) is the number of standard deviations the observed value is removed from the expected value. A bond length (or angle) with $|Z| > 2$ is considered an outlier worth inspection. RMSZ is the root-mean-square of all Z scores of the bond lengths (or angles).

Mol	Type	Chain	Res	Link	Bond lengths			Bond angles		
					Counts	RMSZ	# Z > 2	Counts	RMSZ	# Z > 2
3	PPT	B	414	-	12,12,12	0.61	0	15,15,15	0.65	0
2	PLP	A	413	1	15,15,16	2.21	3 (20%)	21,22,23	2.43	3 (14%)
2	PLP	B	413	1	15,15,16	2.31	2 (13%)	21,22,23	1.63	4 (19%)

In the following table, the Chirals column lists the number of chiral outliers, the number of chiral centers analysed, the number of these observed in the model and the number defined in the Chemical Component Dictionary. Similar counts are reported in the Torsion and Rings columns. '2' means no outliers of that kind were identified.

Mol	Type	Chain	Res	Link	Chirals	Torsions	Rings
3	PPT	B	414	-	-	2/5/5/5	0/1/1/1
2	PLP	A	413	1	-	5/6/6/8	0/1/1/1
2	PLP	B	413	1	-	2/6/6/8	0/1/1/1

All (5) bond length outliers are listed below:

Mol	Chain	Res	Type	Atoms	Z	Observed(Å)	Ideal(Å)
2	A	413	PLP	C4A-C4	-6.10	1.39	1.51
2	B	413	PLP	C4A-C4	-5.81	1.40	1.51
2	B	413	PLP	C3-C2	-5.59	1.35	1.41

Continued on next page...

Continued from previous page...

Mol	Chain	Res	Type	Atoms	Z	Observed(Å)	Ideal(Å)
2	A	413	PLP	C3-C2	-4.66	1.36	1.41
2	A	413	PLP	P-O3P	-2.04	1.47	1.54

The worst 5 of 7 bond angle outliers are listed below:

Mol	Chain	Res	Type	Atoms	Z	Observed(°)	Ideal(°)
2	A	413	PLP	O4P-C5A-C5	8.80	125.84	109.36
2	B	413	PLP	O4P-C5A-C5	4.82	118.39	109.36
2	A	413	PLP	O2P-P-O4P	-4.21	95.70	106.67
2	A	413	PLP	O3P-P-O4P	2.77	113.89	106.67
2	B	413	PLP	C6-C5-C4	2.50	120.14	118.10

There are no chirality outliers.

5 of 9 torsion outliers are listed below:

Mol	Chain	Res	Type	Atoms
2	A	413	PLP	C4-C5-C5A-O4P
2	A	413	PLP	C6-C5-C5A-O4P
2	A	413	PLP	C5A-O4P-P-O2P
2	B	413	PLP	C4-C5-C5A-O4P
2	B	413	PLP	C6-C5-C5A-O4P

There are no ring outliers.

1 monomer is involved in 3 short contacts:

Mol	Chain	Res	Type	Clashes	Symm-Clashes
3	B	414	PPT	3	0

5.7 Other polymers [i](#)

There are no such residues in this entry.

5.8 Polymer linkage issues [i](#)

There are no chain breaks in this entry.

6 Fit of model and data [i](#)

6.1 Protein, DNA and RNA chains [i](#)

EDS was not executed - this section is therefore empty.

6.2 Non-standard residues in protein, DNA, RNA chains [i](#)

EDS was not executed - this section is therefore empty.

6.3 Carbohydrates [i](#)

EDS was not executed - this section is therefore empty.

6.4 Ligands [i](#)

EDS was not executed - this section is therefore empty.

6.5 Other polymers [i](#)

EDS was not executed - this section is therefore empty.