



# Full wwPDB X-ray Structure Validation Report ⓘ

Mar 10, 2026 – 03:07 AM UTC

PDB ID : 6B21 / pdb\_00006b21  
Title : Crystal structure of AmtB from E. coli bound to TopFluor cardiolipin  
Authors : Boone, C.D.; Laganowsky, A.  
Deposited on : 2017-09-19  
Resolution : 2.45 Å(reported)

This is a Full wwPDB X-ray Structure Validation Report for a publicly released PDB entry.

We welcome your comments at [validation@mail.wwpdb.org](mailto:validation@mail.wwpdb.org)

A user guide is available at

<https://www.wwpdb.org/validation/2017/XrayValidationReportHelp>

with specific help available everywhere you see the ⓘ symbol.

The types of validation reports are described at

<http://www.wwpdb.org/validation/2017/FAQs#types>.

---

The following versions of software and data (see [references ⓘ](#)) were used in the production of this report:

MolProbity : 4-5-2 with Phenix2.0  
Mogul : 2022.3.0, CSD as543be (2022)  
Xtrriage (Phenix) : 2.0  
EDS : 3.0  
Buster-report : wwPDB partial adaption of 1.1.7 (2018)  
Percentile statistics : 20250101.v01 (using entries in the PDB archive January 1st 2025)  
CCP4 : 9.0.010 (Gargrove)  
Density-Fitness : 1.0.12  
Ideal geometry (proteins) : Engh & Huber (2001)  
Ideal geometry (DNA, RNA) : Parkinson et al. (1996)  
Validation Pipeline (wwPDB-VP) : 2.49

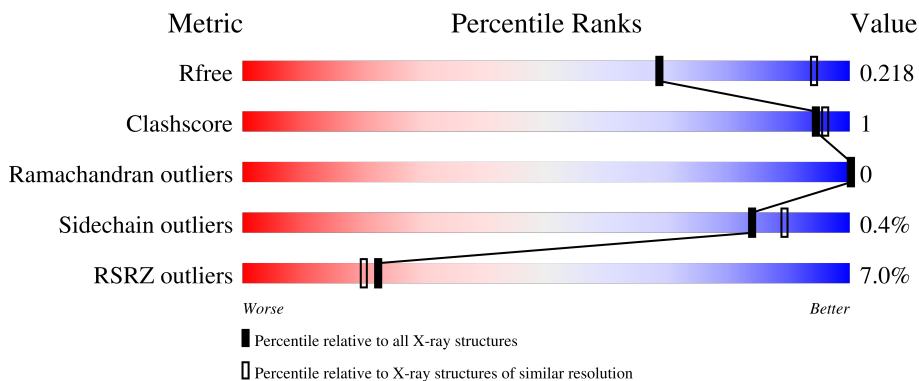
# 1 Overall quality at a glance

The following experimental techniques were used to determine the structure:

*X-RAY DIFFRACTION*

The reported resolution of this entry is 2.45 Å.

Percentile scores (ranging between 0-100) for global validation metrics of the entry are shown in the following graphic. The table shows the number of entries on which the scores are based.



Metric	Whole archive (#Entries)	Similar resolution (#Entries, resolution range(Å))
$R_{free}$	180053	1190 (2.46-2.46)
Clashscore	190562	1229 (2.46-2.46)
Ramachandran outliers	187476	1218 (2.46-2.46)
Sidechain outliers	187428	1218 (2.46-2.46)
RSRZ outliers	180081	1190 (2.46-2.46)

The table below summarises the geometric issues observed across the polymeric chains and their fit to the electron density. The red, orange, yellow and green segments of the lower bar indicate the fraction of residues that contain outliers for  $\geq 3$ , 2, 1 and 0 types of geometric quality criteria respectively. A grey segment represents the fraction of residues that are not modelled. The numeric value for each fraction is indicated below the corresponding segment, with a dot representing fractions  $\leq 5\%$ . The upper red bar (where present) indicates the fraction of residues that have poor fit to the electron density. The numeric value is given above the bar.

Mol	Chain	Length	Quality of chain
1	A	406	

## 2 Entry composition i

There are 3 unique types of molecules in this entry. The entry contains 2832 atoms, of which 0 are hydrogens and 0 are deuteriums.

In the tables below, the ZeroOcc column contains the number of atoms modelled with zero occupancy, the AltConf column contains the number of residues with at least one atom in alternate conformation and the Trace column contains the number of residues modelled with at most 2 atoms.

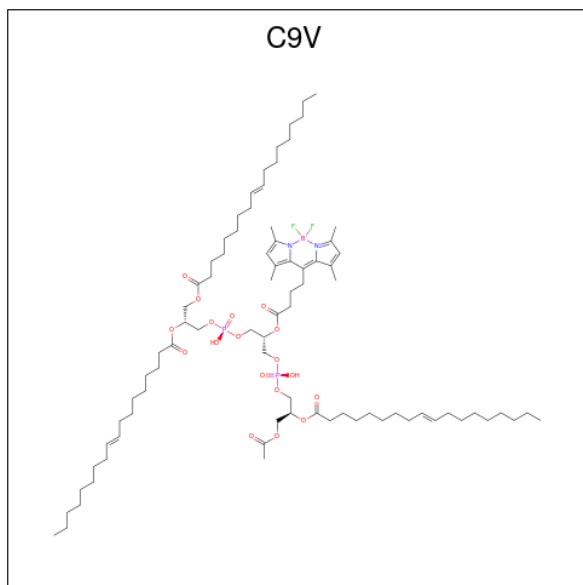
- Molecule 1 is a protein called Ammonia channel.

Mol	Chain	Residues	Atoms					ZeroOcc	AltConf	Trace
			Total	C	N	O	S			
1	A	369	2648	1753	422	455	18	0	0	0

There are 3 discrepancies between the modelled and reference sequences:

Chain	Residue	Modelled	Actual	Comment	Reference
A	1	GLY	-	expression tag	UNP P69681
A	2	ALA	-	expression tag	UNP P69681
A	3	SER	-	expression tag	UNP P69681

- Molecule 2 is [(2R,5R,11R,14S,24E)-14-[(acetyloxy)methyl]-8-{{5-(3,5-dimethyl-1H-pyrrol-2-yl-kappaN)-5-(3,5-dimethyl-2H-pyrrol-2-ylidene-kappaN)pentanoyl}oxy}-5,11-dihydroxy-2-{{[(9E)-octadec-9-enoyl]oxy}-5,11,16-trioxo-4,6,10,12,15-pentaoxa-5lambda 5 ,11lambda 5 -diphosphatritriacont-24-en-1-yl (9E)-octadec-9-enoatato}(difluoro)boron (CCD ID: C9V) (formula: C<sub>82</sub>H<sub>139</sub>BF<sub>2</sub>N<sub>2</sub>O<sub>18</sub>P<sub>2</sub>).



Mol	Chain	Residues	Atoms						ZeroOcc	AltConf	
			Total	B	C	F	N	O			P
2	A	1	107	1	82	2	2	18	2	0	0

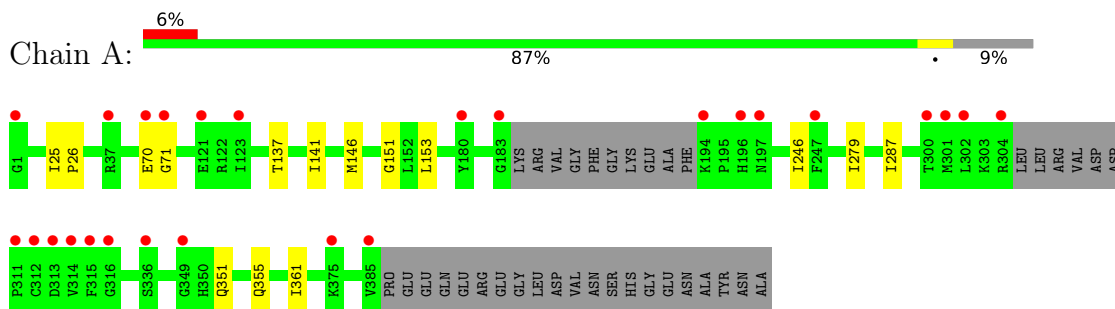
- Molecule 3 is water.

Mol	Chain	Residues	Atoms		ZeroOcc	AltConf
3	A	77	Total	O	0	0
			77	77		

### 3 Residue-property plots [i](#)

These plots are drawn for all protein, RNA, DNA and oligosaccharide chains in the entry. The first graphic for a chain summarises the proportions of the various outlier classes displayed in the second graphic. The second graphic shows the sequence view annotated by issues in geometry and electron density. Residues are color-coded according to the number of geometric quality criteria for which they contain at least one outlier: green = 0, yellow = 1, orange = 2 and red = 3 or more. A red dot above a residue indicates a poor fit to the electron density ( $RSRZ > 2$ ). Stretches of 2 or more consecutive residues without any outlier are shown as a green connector. Residues present in the sample, but not in the model, are shown in grey.

- Molecule 1: Ammonia channel



## 4 Data and refinement statistics

Property	Value	Source
Space group	H 3 2	Depositor
Cell constants a, b, c, $\alpha$ , $\beta$ , $\gamma$	138.78Å 138.78Å 159.14Å 90.00° 90.00° 120.00°	Depositor
Resolution (Å)	56.22 – 2.45 56.22 – 2.45	Depositor EDS
% Data completeness (in resolution range)	98.6 (56.22-2.45) 98.7 (56.22-2.45)	Depositor EDS
$R_{merge}$	0.07	Depositor
$R_{sym}$	(Not available)	Depositor
$\langle I/\sigma(I) \rangle$ <sup>1</sup>	2.35 (at 2.45Å)	Xtrriage
Refinement program	PHENIX	Depositor
R, $R_{free}$	0.170 , 0.212 0.183 , 0.218	Depositor DCC
$R_{free}$ test set	1080 reflections (5.00%)	wwPDB-VP
Wilson B-factor (Å <sup>2</sup> )	48.5	Xtrriage
Anisotropy	0.690	Xtrriage
Bulk solvent $k_{sol}$ (e/Å <sup>3</sup> ), $B_{sol}$ (Å <sup>2</sup> )	0.30 , 63.1	EDS
L-test for twinning <sup>2</sup>	$\langle  L  \rangle = 0.50$ , $\langle L^2 \rangle = 0.33$	Xtrriage
Estimated twinning fraction	No twinning to report.	Xtrriage
$F_o, F_c$ correlation	0.96	EDS
Total number of atoms	2832	wwPDB-VP
Average B, all atoms (Å <sup>2</sup> )	61.0	wwPDB-VP

Xtrriage's analysis on translational NCS is as follows: *The largest off-origin peak in the Patterson function is 5.34% of the height of the origin peak. No significant pseudotranslation is detected.*

<sup>1</sup>Intensities estimated from amplitudes.

<sup>2</sup>Theoretical values of  $\langle |L| \rangle$ ,  $\langle L^2 \rangle$  for acentric reflections are 0.5, 0.333 respectively for untwinned datasets, and 0.375, 0.2 for perfectly twinned datasets.

## 5 Model quality [i](#)

### 5.1 Standard geometry [i](#)

Bond lengths and bond angles in the following residue types are not validated in this section: C9V

The Z score for a bond length (or angle) is the number of standard deviations the observed value is removed from the expected value. A bond length (or angle) with  $|Z| > 5$  is considered an outlier worth inspection. RMSZ is the root-mean-square of all Z scores of the bond lengths (or angles).

Mol	Chain	Bond lengths		Bond angles	
		RMSZ	# Z  >5	RMSZ	# Z  >5
1	A	0.29	0/2708	0.72	0/3697

There are no bond length outliers.

There are no bond angle outliers.

There are no chirality outliers.

There are no planarity outliers.

### 5.2 Too-close contacts [i](#)

In the following table, the Non-H and H(model) columns list the number of non-hydrogen atoms and hydrogen atoms in the chain respectively. The H(added) column lists the number of hydrogen atoms added and optimized by MolProbity. The Clashes column lists the number of clashes within the asymmetric unit, whereas Symm-Clashes lists symmetry-related clashes.

Mol	Chain	Non-H	H(model)	H(added)	Clashes	Symm-Clashes
1	A	2648	0	2686	7	0
2	A	107	0	0	0	0
3	A	77	0	0	0	0
All	All	2832	0	2686	7	0

The all-atom clashscore is defined as the number of clashes found per 1000 atoms (including hydrogen atoms). The all-atom clashscore for this structure is 1.

All (7) close contacts within the same asymmetric unit are listed below, sorted by their clash magnitude.

Atom-1	Atom-2	Interatomic distance (Å)	Clash overlap (Å)
1:A:137:THR:HA	1:A:141:ILE:HD12	1.90	0.53

*Continued on next page...*

*Continued from previous page...*

Atom-1	Atom-2	Interatomic distance (Å)	Clash overlap (Å)
1:A:146:MET:HA	1:A:151:GLY:HA3	1.93	0.48
1:A:153:LEU:HD21	1:A:361:ILE:HD12	1.98	0.44
1:A:25:ILE:HA	1:A:26:PRO:HA	1.85	0.43
1:A:351:GLN:O	1:A:355:GLN:HG2	2.18	0.43
1:A:70:GLU:HA	1:A:71:GLY:HA3	1.52	0.42
1:A:279:ILE:HD13	1:A:287:ILE:HD12	2.03	0.41

There are no symmetry-related clashes.

## 5.3 Torsion angles [i](#)

### 5.3.1 Protein backbone [i](#)

In the following table, the Percentiles column shows the percent Ramachandran outliers of the chain as a percentile score with respect to all X-ray entries followed by that with respect to entries of similar resolution.

The Analysed column shows the number of residues for which the backbone conformation was analysed, and the total number of residues.

Mol	Chain	Analysed	Favoured	Allowed	Outliers	Percentiles
1	A	363/406 (89%)	352 (97%)	11 (3%)	0	<a href="#">100</a> <a href="#">100</a>

There are no Ramachandran outliers to report.

### 5.3.2 Protein sidechains [i](#)

In the following table, the Percentiles column shows the percent sidechain outliers of the chain as a percentile score with respect to all X-ray entries followed by that with respect to entries of similar resolution.

The Analysed column shows the number of residues for which the sidechain conformation was analysed, and the total number of residues.

Mol	Chain	Analysed	Rotameric	Outliers	Percentiles
1	A	259/297 (87%)	258 (100%)	1 (0%)	<a href="#">84</a> <a href="#">89</a>

All (1) residues with a non-rotameric sidechain are listed below:

Mol	Chain	Res	Type
1	A	246	ILE

Sometimes sidechains can be flipped to improve hydrogen bonding and reduce clashes. There are no such sidechains identified.

### 5.3.3 RNA [i](#)

There are no RNA molecules in this entry.

## 5.4 Non-standard residues in protein, DNA, RNA chains [i](#)

There are no non-standard protein/DNA/RNA residues in this entry.

## 5.5 Carbohydrates [i](#)

There are no oligosaccharides in this entry.

## 5.6 Ligand geometry [i](#)

1 ligand is modelled in this entry.

In the following table, the Counts columns list the number of bonds (or angles) for which Mogul statistics could be retrieved, the number of bonds (or angles) that are observed in the model and the number of bonds (or angles) that are defined in the Chemical Component Dictionary. The Link column lists molecule types, if any, to which the group is linked. The Z score for a bond length (or angle) is the number of standard deviations the observed value is removed from the expected value. A bond length (or angle) with  $|Z| > 2$  is considered an outlier worth inspection. RMSZ is the root-mean-square of all Z scores of the bond lengths (or angles).

Mol	Type	Chain	Res	Link	Bond lengths			Bond angles		
					Counts	RMSZ	# $ Z  > 2$	Counts	RMSZ	# $ Z  > 2$
2	C9V	A	501	-	109,109,109	2.88	18 (16%)	131,137,137	1.59	15 (11%)

In the following table, the Chirals column lists the number of chiral outliers, the number of chiral centers analysed, the number of these observed in the model and the number defined in the Chemical Component Dictionary. Similar counts are reported in the Torsion and Rings columns. '-' means no outliers of that kind were identified.

Mol	Type	Chain	Res	Link	Chirals	Torsions	Rings
2	C9V	A	501	-	-	58/103/139/139	0/3/3/3

All (18) bond length outliers are listed below:

Mol	Chain	Res	Type	Atoms	Z	Observed(Å)	Ideal(Å)
2	A	501	C9V	B95-F96	16.40	1.67	1.39
2	A	501	C9V	B95-F97	16.36	1.67	1.39
2	A	501	C9V	CA4-C87	8.97	1.54	1.40
2	A	501	C9V	C88-C87	8.48	1.56	1.41
2	A	501	C9V	O41-C42	4.59	1.46	1.33
2	A	501	C9V	OA5-CA6	4.49	1.47	1.34
2	A	501	C9V	O81-C82	4.32	1.46	1.34
2	A	501	C9V	O61-C62	3.49	1.44	1.34
2	A	501	C9V	C86-C87	3.35	1.59	1.51
2	A	501	C9V	CA4-N98	-3.23	1.36	1.40
2	A	501	C9V	C24-C23	3.10	1.60	1.50
2	A	501	C9V	C88-N94	-2.45	1.35	1.39
2	A	501	C9V	C84-C82	2.39	1.57	1.50
2	A	501	C9V	C93-C92	2.22	1.53	1.49
2	A	501	C9V	C85-C86	2.11	1.59	1.52
2	A	501	C9V	CA0-C99	2.11	1.54	1.50
2	A	501	C9V	O21-C19	2.06	1.43	1.33
2	A	501	C9V	CA8-CA6	2.05	1.56	1.50

All (15) bond angle outliers are listed below:

Mol	Chain	Res	Type	Atoms	Z	Observed(°)	Ideal(°)
2	A	501	C9V	N94-B95-N98	10.73	119.16	106.89
2	A	501	C9V	O61-C62-C64	4.56	121.34	111.48
2	A	501	C9V	B95-N94-C88	-4.39	120.91	125.35
2	A	501	C9V	B95-N98-CA4	-4.18	121.07	125.24
2	A	501	C9V	O81-C82-C84	3.84	119.79	111.48
2	A	501	C9V	OA5-CA6-CA8	3.71	119.50	111.48
2	A	501	C9V	CA4-N98-C99	2.87	110.46	108.18
2	A	501	C9V	O41-C42-C44	2.79	120.33	111.83
2	A	501	C9V	C88-N94-C92	2.70	110.31	108.07
2	A	501	C9V	C93-C92-C91	-2.56	125.62	129.90
2	A	501	C9V	B95-N94-C92	2.42	128.78	126.46
2	A	501	C9V	F96-B95-N94	-2.42	107.18	110.24
2	A	501	C9V	C93-C92-N94	2.22	126.28	123.11
2	A	501	C9V	CA0-C99-N98	2.14	125.89	123.23
2	A	501	C9V	C99-CA1-CA2	-2.07	106.71	108.83

There are no chirality outliers.

All (58) torsion outliers are listed below:

Mol	Chain	Res	Type	Atoms
2	A	501	C9V	CA8-CA6-OA5-C23
2	A	501	C9V	C64-C62-O61-C39
2	A	501	C9V	O83-C82-O81-C31
2	A	501	C9V	C24-O25-P26-O27
2	A	501	C9V	C24-O25-P26-O28
2	A	501	C9V	C24-O25-P26-O29
2	A	501	C9V	C30-O29-P26-O25
2	A	501	C9V	C30-O29-P26-O27
2	A	501	C9V	C30-O29-P26-O28
2	A	501	C9V	C32-O33-P34-O36
2	A	501	C9V	C32-O33-P34-O37
2	A	501	C9V	O63-C62-O61-C39
2	A	501	C9V	C84-C82-O81-C31
2	A	501	C9V	OA7-CA6-OA5-C23
2	A	501	C9V	C31-C32-O33-P34
2	A	501	C9V	CAB-CAC-CAD-CAE
2	A	501	C9V	C44-C42-O41-C40
2	A	501	C9V	C52-C53-C54-C55
2	A	501	C9V	CAK-CAL-CAM-CAN
2	A	501	C9V	C67-C68-C69-C70
2	A	501	C9V	C65-C66-C67-C68
2	A	501	C9V	C62-C64-C65-C66
2	A	501	C9V	O43-C42-O41-C40
2	A	501	C9V	C64-C65-C66-C67
2	A	501	C9V	C46-C47-C48-C49
2	A	501	C9V	OA5-C23-C24-O25
2	A	501	C9V	C68-C69-C70-C71
2	A	501	C9V	C48-C49-C50-C51
2	A	501	C9V	CAC-CAD-CAE-CAF
2	A	501	C9V	C38-C39-C40-O41
2	A	501	C9V	O37-C38-C39-O61
2	A	501	C9V	O61-C39-C40-O41
2	A	501	C9V	C47-C48-C49-C50
2	A	501	C9V	C56-C57-C58-C59
2	A	501	C9V	CA6-CA8-CA9-CAA
2	A	501	C9V	O21-C22-C23-OA5
2	A	501	C9V	C42-C44-C45-C46
2	A	501	C9V	C84-C85-C86-C87
2	A	501	C9V	CAH-CAI-CAJ-CAK
2	A	501	C9V	C18-C19-O21-C22
2	A	501	C9V	C22-C23-C24-O25
2	A	501	C9V	O37-C38-C39-C40
2	A	501	C9V	CAI-CAJ-CAK-CAL

*Continued on next page...*

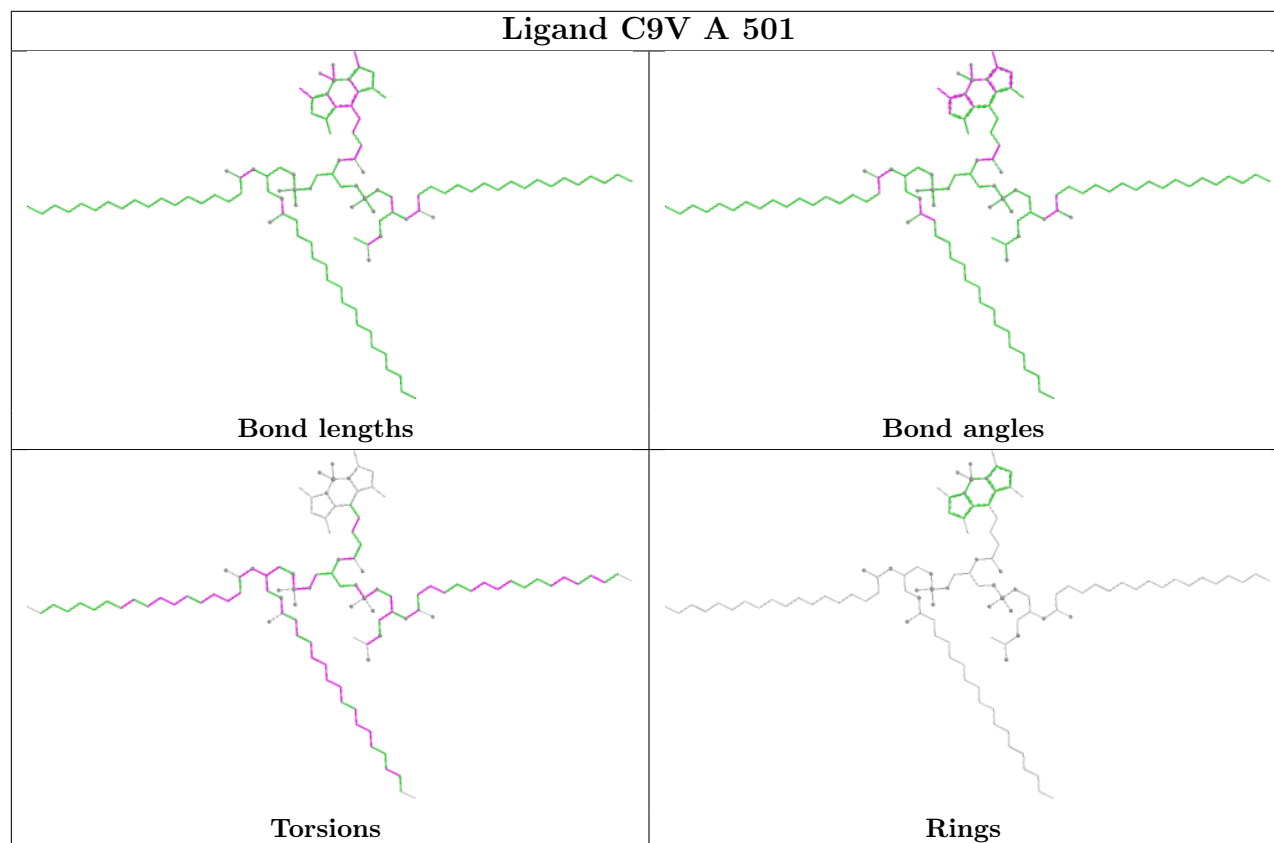
*Continued from previous page...*

Mol	Chain	Res	Type	Atoms
2	A	501	C9V	C51-C52-C53-C54
2	A	501	C9V	C32-O33-P34-O35
2	A	501	C9V	C38-O37-P34-O33
2	A	501	C9V	C38-O37-P34-O35
2	A	501	C9V	C38-O37-P34-O36
2	A	501	C9V	CA8-CA9-CAA-CAB
2	A	501	C9V	C38-C39-O61-C62
2	A	501	C9V	C53-C54-C55-C56
2	A	501	C9V	C49-C50-C51-C52
2	A	501	C9V	CAD-CAE-CAF-CAG
2	A	501	C9V	C45-C46-C47-C48
2	A	501	C9V	O21-C22-C23-C24
2	A	501	C9V	C71-C72-C73-C74
2	A	501	C9V	O20-C19-O21-C22
2	A	501	C9V	C69-C70-C71-C72

There are no ring outliers.

No monomer is involved in short contacts.

The following is a two-dimensional graphical depiction of Mogul quality analysis of bond lengths, bond angles, torsion angles, and ring geometry for all instances of the Ligand of Interest. In addition, ligands with molecular weight > 250 and outliers as shown on the validation Tables will also be included. For torsion angles, if less than 5% of the Mogul distribution of torsion angles is within 10 degrees of the torsion angle in question, then that torsion angle is considered an outlier. Any bond that is central to one or more torsion angles identified as an outlier by Mogul will be highlighted in the graph. For rings, the root-mean-square deviation (RMSD) between the ring in question and similar rings identified by Mogul is calculated over all ring torsion angles. If the average RMSD is greater than 60 degrees and the minimal RMSD between the ring in question and any Mogul-identified rings is also greater than 60 degrees, then that ring is considered an outlier. The outliers are highlighted in purple. The color gray indicates Mogul did not find sufficient equivalents in the CSD to analyse the geometry.



## 5.7 Other polymers [i](#)

There are no such residues in this entry.

## 5.8 Polymer linkage issues [i](#)

There are no chain breaks in this entry.

## 6 Fit of model and data

### 6.1 Protein, DNA and RNA chains

In the following table, the column labelled ‘#RSRZ> 2’ contains the number (and percentage) of RSRZ outliers, followed by percent RSRZ outliers for the chain as percentile scores relative to all X-ray entries and entries of similar resolution. The OWAB column contains the minimum, median, 95<sup>th</sup> percentile and maximum values of the occupancy-weighted average B-factor per residue. The column labelled ‘Q< 0.9’ lists the number of (and percentage) of residues with an average occupancy less than 0.9.

Mol	Chain	Analysed	<RSRZ>	#RSRZ>2	OWAB(Å <sup>2</sup> )	Q<0.9
1	A	369/406 (90%)	0.20	26 (7%) <span style="border: 1px solid red; padding: 2px;">22</span> <span style="border: 1px solid red; padding: 2px;">20</span>	36, 55, 100, 148	0

All (26) RSRZ outliers are listed below:

Mol	Chain	Res	Type	RSRZ
1	A	312	CYS	5.2
1	A	1	GLY	4.6
1	A	311	PRO	4.6
1	A	314	VAL	4.5
1	A	196	HIS	3.6
1	A	304	ARG	3.1
1	A	316	GLY	3.0
1	A	70	GLU	2.9
1	A	375	LYS	2.9
1	A	300	THR	2.8
1	A	247	PHE	2.8
1	A	194	LYS	2.7
1	A	313	ASP	2.7
1	A	315	PHE	2.6
1	A	301	MET	2.6
1	A	37	ARG	2.5
1	A	385	VAL	2.5
1	A	180	TYR	2.4
1	A	71	GLY	2.3
1	A	302	LEU	2.3
1	A	197	ASN	2.3
1	A	121	GLU	2.3
1	A	123	ILE	2.1
1	A	183	GLY	2.1
1	A	349	GLY	2.1
1	A	336	SER	2.1

## 6.2 Non-standard residues in protein, DNA, RNA chains [i](#)

There are no non-standard protein/DNA/RNA residues in this entry.

## 6.3 Carbohydrates [i](#)

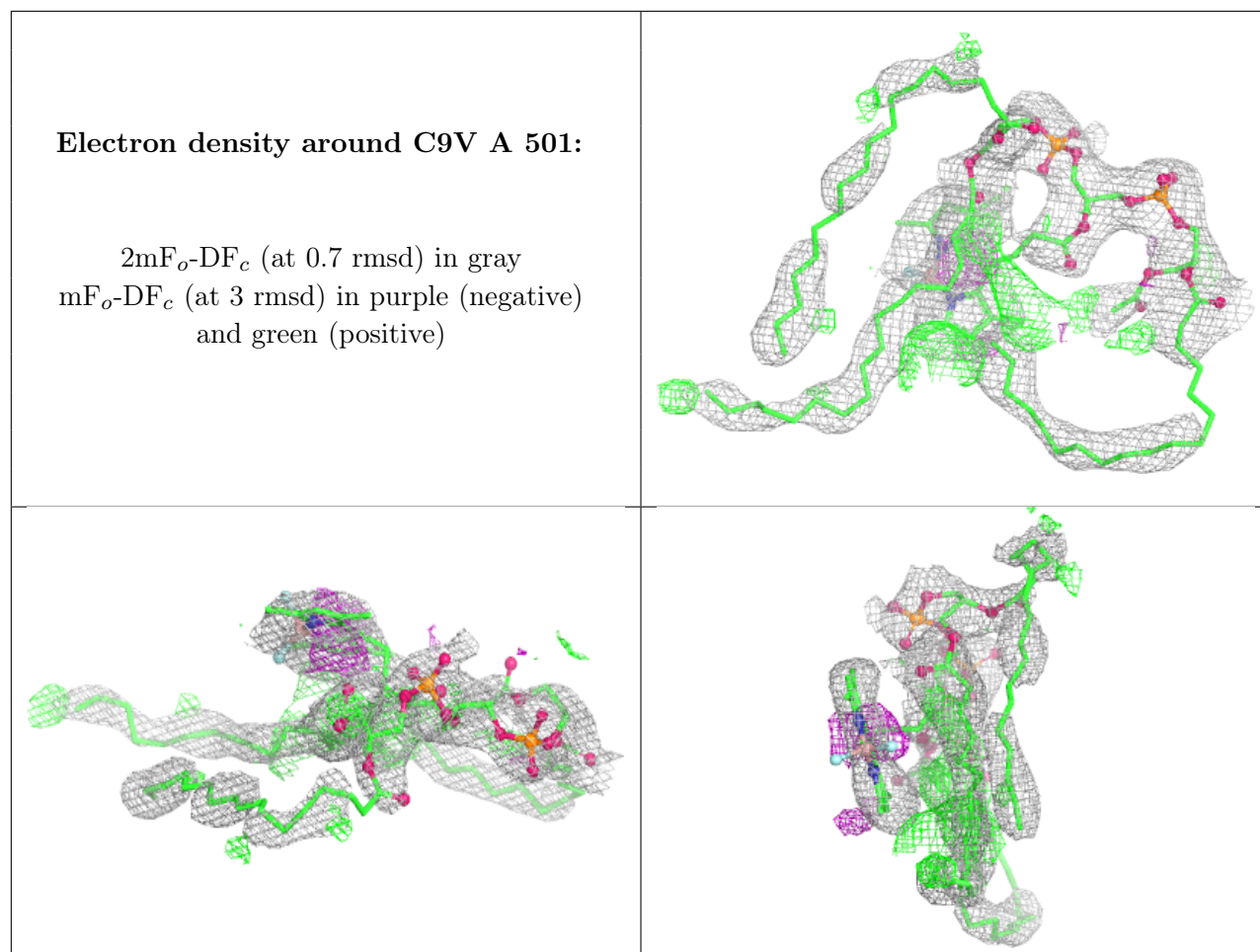
There are no oligosaccharides in this entry.

## 6.4 Ligands [i](#)

In the following table, the Atoms column lists the number of modelled atoms in the group and the number defined in the chemical component dictionary. The B-factors column lists the minimum, median, 95<sup>th</sup> percentile and maximum values of B factors of atoms in the group. The column labelled 'Q< 0.9' lists the number of atoms with occupancy less than 0.9.

Mol	Type	Chain	Res	Atoms	RSCC	RSR	B-factors( $\text{\AA}^2$ )	Q<0.9
2	C9V	A	501	107/107	0.84	0.23	59,92,135,239	0

The following is a graphical depiction of the model fit to experimental electron density of all instances of the Ligand of Interest. In addition, ligands with molecular weight > 250 and outliers as shown on the geometry validation Tables will also be included. Each fit is shown from different orientation to approximate a three-dimensional view.



## 6.5 Other polymers [i](#)

There are no such residues in this entry.