



Full wwPDB X-ray Structure Validation Report ⓘ

Mar 10, 2026 – 01:42 PM UTC

PDB ID : 2BBQ / pdb_00002bbq
Title : STRUCTURAL BASIS FOR RECOGNITION OF POLYGLUTAMYL FOLATES BY THYMIDYLATE SYNTHASE
Authors : Kamb, A.; Finer-Moore, J.; Stroud, R.M.
Deposited on : 1992-09-16
Resolution : 2.30 Å (reported)

This is a Full wwPDB X-ray Structure Validation Report for a publicly released PDB entry.

We welcome your comments at validation@mail.wwpdb.org

A user guide is available at

<https://www.wwpdb.org/validation/2017/XrayValidationReportHelp>

with specific help available everywhere you see the ⓘ symbol.

The types of validation reports are described at

<http://www.wwpdb.org/validation/2017/FAQs#types>.

The following versions of software and data (see [references ⓘ](#)) were used in the production of this report:

MolProbity : 4-5-2 with Phenix2.0
Mogul : 2022.3.0, CSD as543be (2022)
Xtrriage (Phenix) : **NOT EXECUTED**
EDS : **NOT EXECUTED**
Buster-report : wwPDB partial adaption of 1.1.7 (2018)
Percentile statistics : 20250101.v01 (using entries in the PDB archive January 1st 2025)
Ideal geometry (proteins) : Engh & Huber (2001)
Ideal geometry (DNA, RNA) : Parkinson et al. (1996)
Validation Pipeline (wwPDB-VP) : 2.49

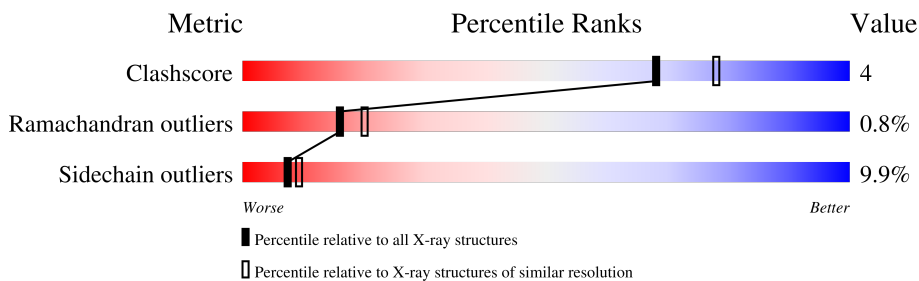
1 Overall quality at a glance i

The following experimental techniques were used to determine the structure:

X-RAY DIFFRACTION

The reported resolution of this entry is 2.30 Å.

Percentile scores (ranging between 0-100) for global validation metrics of the entry are shown in the following graphic. The table shows the number of entries on which the scores are based.



Metric	Whole archive (#Entries)	Similar resolution (#Entries, resolution range(Å))
Clashscore	190562	6919 (2.30-2.30)
Ramachandran outliers	187476	6854 (2.30-2.30)
Sidechain outliers	187428	6854 (2.30-2.30)

The table below summarises the geometric issues observed across the polymeric chains and their fit to the electron density. The red, orange, yellow and green segments of the lower bar indicate the fraction of residues that contain outliers for ≥ 3 , 2, 1 and 0 types of geometric quality criteria respectively. A grey segment represents the fraction of residues that are not modelled. The numeric value for each fraction is indicated below the corresponding segment, with a dot representing fractions $\leq 5\%$.

Note EDS was not executed.

Mol	Chain	Length	Quality of chain
1	A	264	70% (green), 25% (yellow), 5% (orange)
1	B	264	64% (green), 32% (yellow), 4% (orange), 2% (red)

The following table lists non-polymeric compounds, carbohydrate monomers and non-standard residues in protein, DNA, RNA chains that are outliers for geometric or electron-density-fit criteria:

Mol	Type	Chain	Res	Chirality	Geometry	Clashes	Electron density
2	UMP	B	530	X	-	-	-
3	PFG	A	531	X	-	-	-
3	PFG	B	532	X	-	-	-

2 Entry composition [i](#)

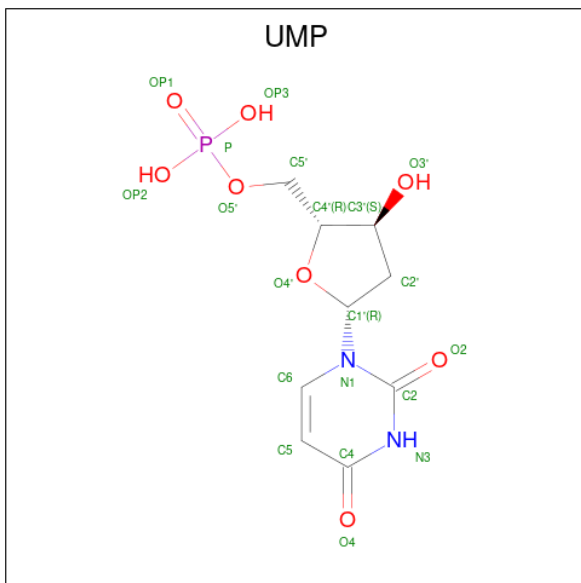
There are 4 unique types of molecules in this entry. The entry contains 4540 atoms, of which 0 are hydrogens and 0 are deuteriums.

In the tables below, the ZeroOcc column contains the number of atoms modelled with zero occupancy, the AltConf column contains the number of residues with at least one atom in alternate conformation and the Trace column contains the number of residues modelled with at most 2 atoms.

- Molecule 1 is a protein called THYMIDYLATE SYNTHASE.

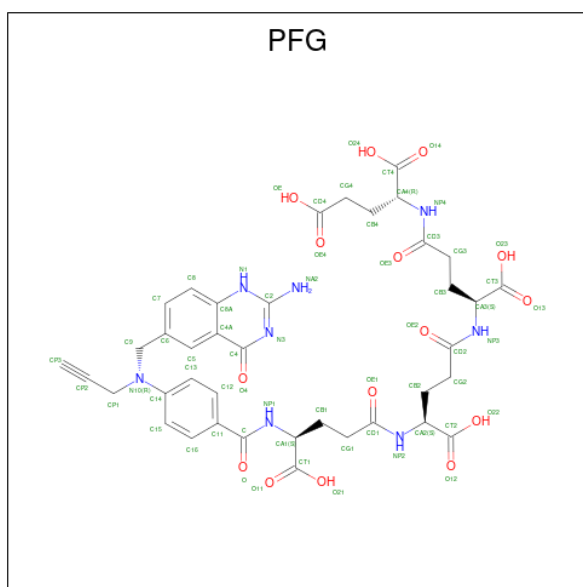
Mol	Chain	Residues	Atoms					ZeroOcc	AltConf	Trace
			Total	C	N	O	S			
1	A	264	Total	C	N	O	S	0	0	0
			2150	1374	371	393	12			
1	B	264	Total	C	N	O	S	0	0	0
			2150	1374	371	393	12			

- Molecule 2 is 2'-DEOXYURIDINE 5'-MONOPHOSPHATE (CCD ID: UMP) (formula: C₉H₁₃N₂O₈P).



Mol	Chain	Residues	Atoms					ZeroOcc	AltConf
			Total	C	N	O	P		
2	A	1	Total	C	N	O	P	0	0
			20	9	2	8	1		
2	B	1	Total	C	N	O	P	0	0
			20	9	2	8	1		

- Molecule 3 is 10-PARPARGYL-5,8-DIDEAZAFOLATE-4-GLUTAMIC ACID (CCD ID: PFG) (formula: C₃₉H₄₄N₈O₁₅).



Mol	Chain	Residues	Atoms			ZeroOcc	AltConf	
			Total	C	N			O
3	A	1	53	34	8	11	0	0
3	B	1	43	29	6	8	0	0

- Molecule 4 is water.

Mol	Chain	Residues	Atoms		ZeroOcc	AltConf
			Total	O		
4	A	67	67	67	0	0
4	B	37	37	37	0	0

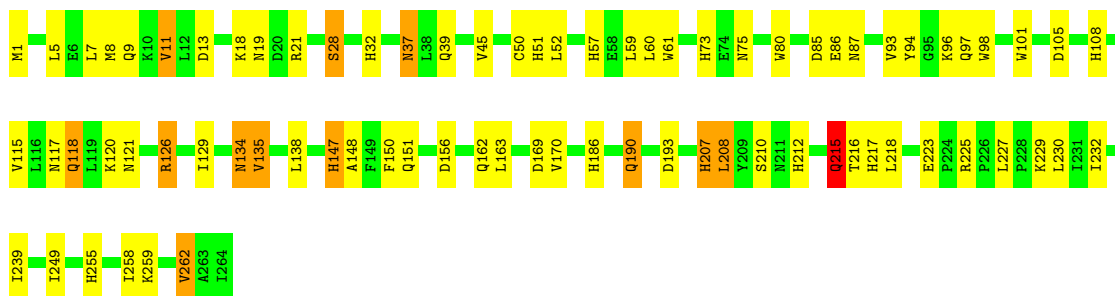
3 Residue-property plots [i](#)

These plots are drawn for all protein, RNA, DNA and oligosaccharide chains in the entry. The first graphic for a chain summarises the proportions of the various outlier classes displayed in the second graphic. The second graphic shows the sequence view annotated by issues in geometry. Residues are color-coded according to the number of geometric quality criteria for which they contain at least one outlier: green = 0, yellow = 1, orange = 2 and red = 3 or more. Stretches of 2 or more consecutive residues without any outlier are shown as a green connector. Residues present in the sample, but not in the model, are shown in grey.

Note EDS was not executed.

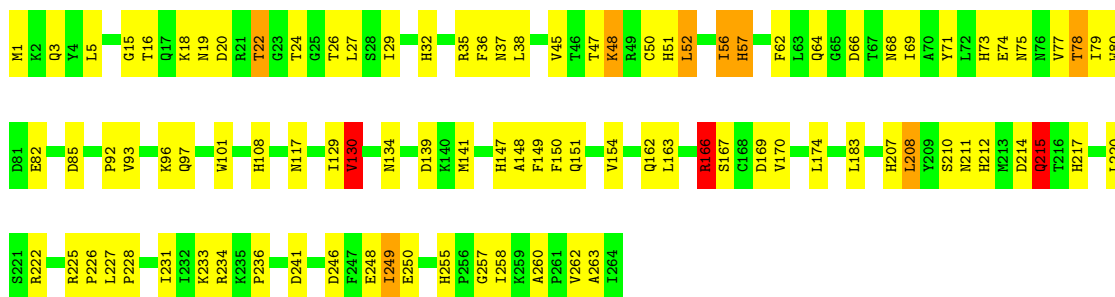
- Molecule 1: THYMIDYLATE SYNTHASE

Chain A: 



- Molecule 1: THYMIDYLATE SYNTHASE

Chain B: 



4 Data and refinement statistics

Xtrriage (Phenix) and EDS were not executed - this section is therefore incomplete.

Property	Value	Source
Space group	P 63	Depositor
Cell constants a, b, c, α , β , γ	127.10Å 127.10Å 67.90Å 90.00° 90.00° 120.00°	Depositor
Resolution (Å)	(Not available) – 2.30	Depositor
% Data completeness (in resolution range)	(Not available) ((Not available)-2.30)	Depositor
R_{merge}	(Not available)	Depositor
R_{sym}	(Not available)	Depositor
Refinement program	X-PLOR	Depositor
R, R_{free}	0.182 , (Not available)	Depositor
Estimated twinning fraction	No twinning to report.	Xtrriage
Total number of atoms	4540	wwPDB-VP
Average B, all atoms (Å ²)	16.0	wwPDB-VP

5 Model quality i

5.1 Standard geometry i

Bond lengths and bond angles in the following residue types are not validated in this section: UMP, PFG

The Z score for a bond length (or angle) is the number of standard deviations the observed value is removed from the expected value. A bond length (or angle) with $|Z| > 5$ is considered an outlier worth inspection. RMSZ is the root-mean-square of all Z scores of the bond lengths (or angles).

Mol	Chain	Bond lengths		Bond angles	
		RMSZ	# Z >5	RMSZ	# Z >5
1	A	1.13	11/2210 (0.5%)	1.91	62/3000 (2.1%)
1	B	1.15	13/2210 (0.6%)	1.99	73/3000 (2.4%)
All	All	1.14	24/4420 (0.5%)	1.95	135/6000 (2.2%)

Chiral center outliers are detected by calculating the chiral volume of a chiral center and verifying if the center is modelled as a planar moiety or with the opposite hand. A planarity outlier is detected by checking planarity of atoms in a peptide group, atoms in a mainchain group or atoms of a sidechain that are expected to be planar.

Mol	Chain	#Chirality outliers	#Planarity outliers
1	B	0	1

All (24) bond length outliers are listed below:

Mol	Chain	Res	Type	Atoms	Z	Observed(Å)	Ideal(Å)
1	B	255	HIS	CD2-NE2	-7.41	1.29	1.37
1	A	207	HIS	CD2-NE2	-7.08	1.30	1.37
1	B	147	HIS	CD2-NE2	-6.95	1.30	1.37
1	B	57	HIS	CD2-NE2	-6.93	1.30	1.37
1	B	262	VAL	CA-CB	6.88	1.62	1.54
1	B	207	HIS	CD2-NE2	-6.86	1.30	1.37
1	B	56	ILE	CA-CB	6.60	1.63	1.54
1	B	73	HIS	CD2-NE2	-6.59	1.30	1.37
1	A	217	HIS	CD2-NE2	-6.59	1.30	1.37
1	A	73	HIS	CD2-NE2	-6.53	1.30	1.37
1	B	108	HIS	CD2-NE2	-6.36	1.30	1.37
1	A	57	HIS	CD2-NE2	-6.04	1.31	1.37
1	A	32	HIS	CD2-NE2	-6.03	1.31	1.37
1	A	212	HIS	CD2-NE2	-5.92	1.31	1.37
1	B	130	VAL	CA-CB	5.90	1.62	1.54
1	B	212	HIS	CD2-NE2	-5.88	1.31	1.37

Continued on next page...

Continued from previous page...

Mol	Chain	Res	Type	Atoms	Z	Observed(Å)	Ideal(Å)
1	B	32	HIS	CD2-NE2	-5.78	1.31	1.37
1	A	11	VAL	CA-CB	5.67	1.62	1.54
1	B	51	HIS	CD2-NE2	-5.63	1.31	1.37
1	A	255	HIS	CD2-NE2	-5.44	1.31	1.37
1	B	217	HIS	CD2-NE2	-5.37	1.31	1.37
1	A	51	HIS	CD2-NE2	-5.23	1.32	1.37
1	A	147	HIS	CD2-NE2	-5.09	1.32	1.37
1	A	108	HIS	CD2-NE2	-5.03	1.32	1.37

All (135) bond angle outliers are listed below:

Mol	Chain	Res	Type	Atoms	Z	Observed(°)	Ideal(°)
1	B	147	HIS	CA-CB-CG	11.08	124.88	113.80
1	B	134	ASN	OD1-CG-ND2	-10.15	112.45	122.60
1	B	85	ASP	CA-CB-CG	9.26	121.86	112.60
1	B	166	ARG	NE-CZ-NH1	9.22	130.72	121.50
1	A	105	ASP	CA-CB-CG	8.96	121.56	112.60
1	A	37	ASN	OD1-CG-ND2	-8.91	113.69	122.60
1	A	169	ASP	CA-CB-CG	8.81	121.41	112.60
1	A	147	HIS	CA-CB-CG	8.76	122.56	113.80
1	B	79	ILE	N-CA-C	8.45	121.61	111.05
1	B	66	ASP	CA-CB-CG	8.40	121.00	112.60
1	A	37	ASN	CB-CG-ND2	8.19	128.69	116.40
1	A	75	ASN	CA-CB-CG	-8.19	104.41	112.60
1	A	215	GLN	OE1-CD-NE2	-7.97	114.63	122.60
1	B	64	GLN	OE1-CD-NE2	-7.76	114.84	122.60
1	A	121	ASN	OD1-CG-ND2	-7.54	115.06	122.60
1	A	97	GLN	OE1-CD-NE2	-7.52	115.08	122.60
1	B	51	HIS	CB-CG-CD2	-7.52	121.43	131.20
1	B	215	GLN	OE1-CD-NE2	-7.45	115.15	122.60
1	B	166	ARG	CB-CG-CD	7.40	128.31	111.30
1	A	85	ASP	CA-CB-CG	7.28	119.88	112.60
1	A	87	ASN	OD1-CG-ND2	-7.20	115.40	122.60
1	B	108	HIS	CB-CG-CD2	-7.16	121.90	131.20
1	B	117	ASN	OD1-CG-ND2	-7.15	115.45	122.60
1	A	150	PHE	CA-CB-CG	7.11	120.91	113.80
1	A	212	HIS	CA-CB-CG	7.04	120.83	113.80
1	B	77	VAL	O-C-N	6.95	130.41	123.18
1	A	151	GLN	OE1-CD-NE2	-6.90	115.70	122.60
1	B	62	PHE	CA-CB-CG	6.90	120.70	113.80
1	B	249	ILE	N-CA-CB	-6.87	103.30	112.10
1	B	32	HIS	CA-C-O	-6.86	113.30	120.99

Continued on next page...

Continued from previous page...

Mol	Chain	Res	Type	Atoms	Z	Observed(°)	Ideal(°)
1	B	210	SER	CA-CB-OG	-6.86	97.37	111.10
1	A	28	SER	N-CA-C	6.82	119.80	109.23
1	B	78	THR	N-CA-CB	-6.80	100.42	110.49
1	B	241	ASP	CA-CB-CG	6.80	119.40	112.60
1	B	249	ILE	CA-C-O	6.79	126.97	120.31
1	B	139	ASP	CA-CB-CG	6.76	119.36	112.60
1	B	36	PHE	CA-CB-CG	-6.64	107.16	113.80
1	B	97	GLN	OE1-CD-NE2	-6.55	116.05	122.60
1	B	57	HIS	CB-CG-CD2	-6.54	122.70	131.20
1	B	16	THR	CA-CB-OG1	-6.54	99.80	109.60
1	B	207	HIS	N-CA-C	6.42	118.83	109.07
1	B	166	ARG	CG-CD-NE	-6.40	97.92	112.00
1	A	9	GLN	OE1-CD-NE2	-6.33	116.28	122.60
1	A	13	ASP	CA-CB-CG	6.25	118.84	112.60
1	B	147	HIS	CB-CG-CD2	-6.22	123.12	131.20
1	B	151	GLN	OE1-CD-NE2	-6.19	116.41	122.60
1	B	22	THR	N-CA-CB	-6.17	100.73	110.22
1	A	193	ASP	CA-CB-CG	6.16	118.76	112.60
1	A	148	ALA	N-CA-C	6.16	120.97	112.90
1	A	134	ASN	CB-CG-ND2	6.16	125.64	116.40
1	B	51	HIS	CB-CG-ND1	6.14	131.92	122.70
1	B	15	GLY	CA-C-O	6.12	127.09	121.58
1	A	57	HIS	CB-CG-CD2	-6.07	123.30	131.20
1	A	262	VAL	CB-CA-C	-6.05	102.92	111.21
1	B	246	ASP	CA-CB-CG	6.04	118.64	112.60
1	A	87	ASN	CB-CG-ND2	6.00	125.41	116.40
1	B	68	ASN	CA-CB-CG	-6.00	106.60	112.60
1	B	255	HIS	CB-CG-CD2	-5.99	123.42	131.20
1	A	210	SER	CA-CB-OG	-5.98	99.14	111.10
1	B	214	ASP	CA-CB-CG	5.97	118.57	112.60
1	B	260	ALA	CA-C-N	5.97	126.44	119.99
1	B	260	ALA	C-N-CA	5.97	126.44	119.99
1	B	211	ASN	CA-CB-CG	5.94	118.54	112.60
1	B	166	ARG	NE-CZ-NH2	-5.91	113.88	119.20
1	B	3	GLN	OE1-CD-NE2	-5.89	116.71	122.60
1	B	48	LYS	N-CA-C	-5.89	99.01	108.55
1	B	249	ILE	CB-CA-C	5.88	117.73	110.73
1	B	129	ILE	N-CA-C	5.87	116.94	108.48
1	A	19	ASN	OD1-CG-ND2	-5.86	116.74	122.60
1	B	129	ILE	CA-C-N	-5.85	114.99	123.06
1	B	129	ILE	C-N-CA	-5.85	114.99	123.06
1	B	80	TRP	CG-CD2-CE3	5.83	139.74	133.90

Continued on next page...

Continued from previous page...

Mol	Chain	Res	Type	Atoms	Z	Observed(°)	Ideal(°)
1	A	232	ILE	O-C-N	-5.83	116.56	123.03
1	B	52	LEU	N-CA-C	5.81	118.39	111.71
1	A	97	GLN	CG-CD-NE2	5.80	125.11	116.40
1	B	134	ASN	CB-CG-ND2	5.72	124.98	116.40
1	B	169	ASP	CA-CB-CG	5.71	118.31	112.60
1	A	207	HIS	CB-CG-CD2	-5.70	123.79	131.20
1	A	258	ILE	O-C-N	-5.68	117.52	123.03
1	B	78	THR	CA-CB-OG1	-5.68	101.08	109.60
1	B	162	GLN	OE1-CD-NE2	-5.63	116.97	122.60
1	A	94	TYR	N-CA-C	5.60	120.56	111.37
1	A	212	HIS	CB-CG-ND1	5.59	131.09	122.70
1	A	126	ARG	NE-CZ-NH2	-5.52	114.23	119.20
1	B	166	ARG	CD-NE-CZ	5.51	132.12	124.40
1	B	108	HIS	CB-CG-ND1	5.50	130.94	122.70
1	B	77	VAL	CA-C-O	5.46	125.79	120.27
1	B	117	ASN	CB-CG-ND2	5.44	124.56	116.40
1	B	37	ASN	N-CA-C	-5.43	98.92	108.20
1	A	73	HIS	CB-CG-CD2	-5.42	124.15	131.20
1	A	212	HIS	CB-CG-CD2	-5.41	124.17	131.20
1	A	61	TRP	N-CA-C	-5.40	105.31	111.14
1	B	80	TRP	CE2-CD2-CG	-5.38	100.74	107.20
1	B	35	ARG	CA-CB-CG	5.38	124.87	114.10
1	A	190	GLN	OE1-CD-NE2	-5.38	117.22	122.60
1	A	255	HIS	CB-CG-CD2	-5.38	124.20	131.20
1	A	98	TRP	CG-CD1-NE1	-5.38	103.21	110.20
1	B	75	ASN	OD1-CG-ND2	-5.36	117.24	122.60
1	A	32	HIS	CB-CG-CD2	-5.35	124.24	131.20
1	A	80	TRP	CG-CD1-NE1	-5.33	103.27	110.20
1	B	174	LEU	CA-C-N	5.32	125.38	119.32
1	B	174	LEU	C-N-CA	5.32	125.38	119.32
1	B	233	LYS	N-CA-C	5.32	117.16	111.36
1	A	134	ASN	OD1-CG-ND2	-5.31	117.29	122.60
1	B	149	PHE	N-CA-CB	-5.31	101.60	110.57
1	A	217	HIS	CB-CG-CD2	-5.29	124.32	131.20
1	A	229	LYS	O-C-N	-5.29	116.81	123.27
1	A	101	TRP	CA-C-N	5.26	125.42	119.90
1	A	101	TRP	C-N-CA	5.26	125.42	119.90
1	B	29	ILE	O-C-N	-5.21	117.50	122.97
1	B	257	GLY	N-CA-C	5.21	125.53	113.18
1	A	162	GLN	OE1-CD-NE2	-5.21	117.39	122.60
1	B	27	LEU	N-CA-C	-5.18	100.08	108.52
1	A	80	TRP	CE2-CD2-CG	-5.18	100.99	107.20

Continued on next page...

Continued from previous page...

Mol	Chain	Res	Type	Atoms	Z	Observed(°)	Ideal(°)
1	A	216	THR	O-C-N	-5.17	116.74	122.07
1	A	135	VAL	N-CA-CB	-5.15	104.79	110.51
1	A	156	ASP	CA-CB-CG	5.14	117.74	112.60
1	A	262	VAL	N-CA-CB	5.13	117.64	110.56
1	A	101	TRP	CG-CD2-CE3	5.12	139.02	133.90
1	B	148	ALA	N-CA-C	5.12	119.65	113.41
1	A	98	TRP	CG-CD2-CE3	5.11	139.01	133.90
1	A	118	GLN	CG-CD-NE2	5.10	124.06	116.40
1	A	186	HIS	CB-CG-CD2	-5.10	124.57	131.20
1	B	19	ASN	N-CA-C	-5.10	100.85	108.96
1	B	250	GLU	CA-CB-CG	5.10	124.30	114.10
1	A	98	TRP	CE2-CD2-CG	-5.08	101.10	107.20
1	A	118	GLN	OE1-CD-NE2	-5.07	117.53	122.60
1	B	74	GLU	CA-CB-CG	5.07	124.24	114.10
1	B	32	HIS	CB-CG-CD2	-5.04	124.64	131.20
1	A	223	GLU	CA-C-N	5.04	125.32	119.93
1	A	223	GLU	C-N-CA	5.04	125.32	119.93
1	A	126	ARG	NE-CZ-NH1	5.03	126.53	121.50
1	A	19	ASN	N-CA-C	-5.01	104.06	110.53
1	A	156	ASP	N-CA-C	-5.01	104.34	110.65
1	B	32	HIS	CA-CB-CG	-5.00	108.80	113.80

There are no chirality outliers.

All (1) planarity outliers are listed below:

Mol	Chain	Res	Type	Group
1	B	166	ARG	Sidechain

5.2 Too-close contacts

In the following table, the Non-H and H(model) columns list the number of non-hydrogen atoms and hydrogen atoms in the chain respectively. The H(added) column lists the number of hydrogen atoms added and optimized by MolProbity. The Clashes column lists the number of clashes within the asymmetric unit, whereas Symm-Clashes lists symmetry-related clashes.

Mol	Chain	Non-H	H(model)	H(added)	Clashes	Symm-Clashes
1	A	2150	0	2081	14	0
1	B	2150	0	2081	19	0
2	A	20	0	9	0	0
2	B	20	0	9	0	0
3	A	53	0	33	2	0

Continued on next page...

Continued from previous page...

Mol	Chain	Non-H	H(model)	H(added)	Clashes	Symm-Clashes
3	B	43	0	27	0	0
4	A	67	0	0	1	0
4	B	37	0	0	1	0
All	All	4540	0	4240	31	0

The all-atom clashscore is defined as the number of clashes found per 1000 atoms (including hydrogen atoms). The all-atom clashscore for this structure is 4.

All (31) close contacts within the same asymmetric unit are listed below, sorted by their clash magnitude.

Atom-1	Atom-2	Interatomic distance (Å)	Clash overlap (Å)
1:B:22:THR:HG21	1:B:263:ALA:HB1	1.49	0.92
1:B:231:ILE:HB	1:B:248:GLU:HB2	1.78	0.66
1:A:215:GLN:H	1:A:215:GLN:NE2	1.95	0.65
1:B:1:MET:HE2	1:B:45:VAL:HG12	1.81	0.62
1:A:28:SER:HB3	1:A:207:HIS:HB3	1.83	0.61
1:B:20:ASP:OD2	1:B:22:THR:HB	2.02	0.59
1:A:215:GLN:H	1:A:215:GLN:HE21	1.52	0.55
3:A:531:PGF:CP2	3:A:531:PGF:H15	2.37	0.55
1:B:215:GLN:HE21	1:B:215:GLN:H	1.54	0.55
1:B:22:THR:CG2	1:B:263:ALA:HB1	2.30	0.54
1:A:18:LYS:HE3	1:B:154:VAL:O	2.08	0.53
1:B:57:HIS:HD2	1:B:71:TYR:OH	1.92	0.52
1:B:170:VAL:HB	1:B:208:LEU:HD13	1.91	0.52
1:A:129:ILE:HD11	1:B:166:ARG:HG3	1.91	0.52
1:A:115:VAL:HA	1:A:118:GLN:HE21	1.77	0.49
1:B:1:MET:N	4:B:568:HOH:O	2.45	0.49
1:A:5:LEU:HD23	1:A:8:MET:HE2	1.96	0.48
1:B:92:PRO:O	1:B:141:MET:HE2	2.14	0.47
1:A:1:MET:N	4:A:547:HOH:O	2.34	0.47
1:B:234:ARG:O	1:B:236:PRO:HD3	2.14	0.47
1:A:45:VAL:HG22	1:A:50:CYS:SG	2.55	0.46
1:B:22:THR:HG22	1:B:24:THR:H	1.82	0.45
1:A:147:HIS:HB2	1:A:163:LEU:HD11	1.99	0.44
1:B:52:LEU:HD12	1:B:249:ILE:HG21	2.00	0.44
1:B:130:VAL:HG22	1:B:150:PHE:CE1	2.53	0.44
1:A:126:ARG:HD3	1:B:167:SER:OG	2.19	0.43
1:B:45:VAL:HG22	1:B:50:CYS:SG	2.60	0.42
1:A:170:VAL:HB	1:A:208:LEU:HD13	2.00	0.41
1:A:135:VAL:HB	1:B:101:TRP:CE2	2.55	0.41
1:A:218:LEU:HD12	1:A:218:LEU:HA	1.90	0.40

Continued on next page...

Continued from previous page...

Atom-1	Atom-2	Interatomic distance (Å)	Clash overlap (Å)
3:A:531:PFG:CP2	3:A:531:PFG:C15	2.96	0.40

There are no symmetry-related clashes.

5.3 Torsion angles [i](#)

5.3.1 Protein backbone [i](#)

In the following table, the Percentiles column shows the percent Ramachandran outliers of the chain as a percentile score with respect to all X-ray entries followed by that with respect to entries of similar resolution.

The Analysed column shows the number of residues for which the backbone conformation was analysed, and the total number of residues.

Mol	Chain	Analysed	Favoured	Allowed	Outliers	Percentiles	
1	A	262/264 (99%)	252 (96%)	9 (3%)	1 (0%)	30	38
1	B	262/264 (99%)	250 (95%)	9 (3%)	3 (1%)	11	13
All	All	524/528 (99%)	502 (96%)	18 (3%)	4 (1%)	16	20

All (4) Ramachandran outliers are listed below:

Mol	Chain	Res	Type
1	A	93	VAL
1	B	258	ILE
1	B	93	VAL
1	B	228	PRO

5.3.2 Protein sidechains [i](#)

In the following table, the Percentiles column shows the percent sidechain outliers of the chain as a percentile score with respect to all X-ray entries followed by that with respect to entries of similar resolution.

The Analysed column shows the number of residues for which the sidechain conformation was analysed, and the total number of residues.

Mol	Chain	Analysed	Rotameric	Outliers	Percentiles	
1	A	233/233 (100%)	209 (90%)	24 (10%)	7	8

Continued on next page...

Continued from previous page...

Mol	Chain	Analysed	Rotameric	Outliers	Percentiles
1	B	233/233 (100%)	211 (91%)	22 (9%)	8 11
All	All	466/466 (100%)	420 (90%)	46 (10%)	7 9

All (46) residues with a non-rotameric sidechain are listed below:

Mol	Chain	Res	Type
1	A	7	LEU
1	A	11	VAL
1	A	21	ARG
1	A	37	ASN
1	A	39	GLN
1	A	52	LEU
1	A	59	LEU
1	A	60	LEU
1	A	86	GLU
1	A	96	LYS
1	A	117	ASN
1	A	120	LYS
1	A	134	ASN
1	A	138	LEU
1	A	190	GLN
1	A	208	LEU
1	A	215	GLN
1	A	225	ARG
1	A	227	LEU
1	A	230	LEU
1	A	239	ILE
1	A	249	ILE
1	A	259	LYS
1	A	262	VAL
1	B	5	LEU
1	B	18	LYS
1	B	26	THR
1	B	38	LEU
1	B	47	THR
1	B	48	LYS
1	B	56	ILE
1	B	69	ILE
1	B	78	THR
1	B	82	GLU
1	B	96	LYS
1	B	130	VAL

Continued on next page...

Continued from previous page...

Mol	Chain	Res	Type
1	B	163	LEU
1	B	166	ARG
1	B	183	LEU
1	B	208	LEU
1	B	215	GLN
1	B	220	LEU
1	B	222	ARG
1	B	225	ARG
1	B	226	PRO
1	B	227	LEU

Sometimes sidechains can be flipped to improve hydrogen bonding and reduce clashes. All (17) such sidechains are listed below:

Mol	Chain	Res	Type
1	A	32	HIS
1	A	37	ASN
1	A	97	GLN
1	A	108	HIS
1	A	118	GLN
1	A	121	ASN
1	A	134	ASN
1	A	151	GLN
1	A	186	HIS
1	A	190	GLN
1	A	191	GLN
1	A	215	GLN
1	B	51	HIS
1	B	57	HIS
1	B	121	ASN
1	B	215	GLN
1	B	217	HIS

5.3.3 RNA [i](#)

There are no RNA molecules in this entry.

5.4 Non-standard residues in protein, DNA, RNA chains [i](#)

There are no non-standard protein/DNA/RNA residues in this entry.

5.5 Carbohydrates [i](#)

There are no oligosaccharides in this entry.

5.6 Ligand geometry [i](#)

4 ligands are modelled in this entry.

In the following table, the Counts columns list the number of bonds (or angles) for which Mogul statistics could be retrieved, the number of bonds (or angles) that are observed in the model and the number of bonds (or angles) that are defined in the Chemical Component Dictionary. The Link column lists molecule types, if any, to which the group is linked. The Z score for a bond length (or angle) is the number of standard deviations the observed value is removed from the expected value. A bond length (or angle) with $|Z| > 2$ is considered an outlier worth inspection. RMSZ is the root-mean-square of all Z scores of the bond lengths (or angles).

Mol	Type	Chain	Res	Link	Bond lengths			Bond angles		
					Counts	RMSZ	# Z > 2	Counts	RMSZ	# Z > 2
3	PFG	B	532	-	44,45,64	1.79	6 (13%)	60,61,87	1.81	11 (18%)
2	UMP	A	529	1	21,21,21	1.68	3 (14%)	30,31,31	3.47	8 (26%)
2	UMP	B	530	1	21,21,21	1.89	4 (19%)	30,31,31	2.98	8 (26%)
3	PFG	A	531	-	55,55,64	1.70	6 (10%)	74,75,87	1.75	15 (20%)

In the following table, the Chirals column lists the number of chiral outliers, the number of chiral centers analysed, the number of these observed in the model and the number defined in the Chemical Component Dictionary. Similar counts are reported in the Torsion and Rings columns. '-' means no outliers of that kind were identified.

Mol	Type	Chain	Res	Link	Chirals	Torsions	Rings
3	PFG	B	532	-	1/1/7/18	6/39/40/67	0/3/3/3
3	PFG	A	531	-	1/1/11/18	9/53/54/67	0/3/3/3
2	UMP	B	530	1	1/1/4/4	3/10/22/22	0/2/2/2
2	UMP	A	529	1	-	2/10/22/22	0/2/2/2

All (19) bond length outliers are listed below:

Mol	Chain	Res	Type	Atoms	Z	Observed(Å)	Ideal(Å)
3	A	531	PFG	O4-C4	8.29	1.37	1.23
3	B	532	PFG	O4-C4	8.13	1.37	1.23
2	B	530	UMP	C6-C5	6.07	1.49	1.35
2	A	529	UMP	C6-C5	5.22	1.47	1.35
3	B	532	PFG	C4A-C4	-5.01	1.39	1.48
3	A	531	PFG	C4A-C4	-4.93	1.39	1.48

Continued on next page...

Continued from previous page...

Mol	Chain	Res	Type	Atoms	Z	Observed(Å)	Ideal(Å)
2	A	529	UMP	C6-N1	3.70	1.46	1.38
2	B	530	UMP	C6-N1	3.53	1.46	1.38
3	B	532	PFG	C4-N3	-3.05	1.32	1.38
3	A	531	PFG	C4-N3	-2.53	1.33	1.38
2	B	530	UMP	P-OP3	-2.39	1.45	1.54
2	B	530	UMP	C5-C4	2.39	1.48	1.43
3	A	531	PFG	O21-CT1	-2.37	1.23	1.30
3	B	532	PFG	O21-CT1	-2.36	1.23	1.30
3	B	532	PFG	C8A-N1	-2.33	1.35	1.39
2	A	529	UMP	P-OP3	-2.28	1.46	1.54
3	A	531	PFG	C8A-N1	-2.24	1.36	1.39
3	A	531	PFG	O23-CT3	-2.11	1.23	1.30
3	B	532	PFG	C11-C	-2.09	1.45	1.50

All (42) bond angle outliers are listed below:

Mol	Chain	Res	Type	Atoms	Z	Observed(°)	Ideal(°)
2	A	529	UMP	O4'-C1'-N1	12.72	130.44	107.86
2	B	530	UMP	O4'-C1'-N1	9.79	125.25	107.86
2	A	529	UMP	C6-C5-C4	-7.88	109.46	119.53
2	B	530	UMP	C6-C5-C4	-7.88	109.46	119.53
3	B	532	PFG	CP2-CP1-N10	-6.61	107.35	113.45
3	A	531	PFG	CP2-CP1-N10	-6.57	107.39	113.45
2	A	529	UMP	C5-C6-N1	-6.57	111.17	121.84
2	B	530	UMP	C5-C6-N1	-6.41	111.42	121.84
3	B	532	PFG	CP1-N10-C9	-6.29	110.86	117.19
2	A	529	UMP	C6-N1-C2	-5.46	114.35	121.00
2	A	529	UMP	C1'-N1-C2	5.10	127.64	117.66
2	B	530	UMP	C2'-C1'-N1	4.41	124.83	113.81
2	B	530	UMP	C1'-N1-C2	4.02	125.51	117.66
3	A	531	PFG	CP1-N10-C9	-3.69	113.47	117.19
3	A	531	PFG	C8A-C4A-C4	-3.42	116.42	120.11
3	B	532	PFG	CG1-CD1-NP2	-3.38	109.91	115.86
3	A	531	PFG	CG2-CB2-CA2	3.35	119.34	113.16
3	A	531	PFG	C6-C9-N10	3.31	119.48	114.13
3	A	531	PFG	C9-N10-C14	3.19	126.25	120.72
3	A	531	PFG	CB3-CA3-NP3	-3.16	104.66	110.91
2	A	529	UMP	C2'-C1'-N1	3.11	121.58	113.81
2	B	530	UMP	C1'-N1-C6	-3.08	115.47	121.53
3	A	531	PFG	CG1-CD1-NP2	-2.90	110.76	115.86
3	B	532	PFG	C8A-C4A-C4	-2.89	116.99	120.11
3	B	532	PFG	CB2-CA2-NP2	-2.84	105.29	110.91

Continued on next page...

Continued from previous page...

Mol	Chain	Res	Type	Atoms	Z	Observed(°)	Ideal(°)
3	A	531	PFG	NA2-C2-N1	2.76	122.59	116.77
2	A	529	UMP	C1'-N1-C6	-2.74	116.15	121.53
3	B	532	PFG	CP1-N10-C14	2.57	123.86	119.03
2	A	529	UMP	OP3-P-O5'	2.56	113.35	106.67
3	A	531	PFG	CT2-CA2-NP2	2.54	116.46	110.57
3	B	532	PFG	C9-N10-C14	2.53	125.11	120.72
3	B	532	PFG	OE1-CD1-NP2	-2.52	118.69	122.95
3	B	532	PFG	NA2-C2-N1	2.40	121.81	116.77
3	A	531	PFG	CG3-CB3-CA3	2.27	117.36	113.16
3	A	531	PFG	O23-CT3-CA3	2.26	121.17	113.51
2	B	530	UMP	C6-N1-C2	-2.17	118.35	121.00
3	B	532	PFG	C5-C4A-C8A	2.15	121.02	119.09
3	A	531	PFG	O21-CT1-CA1	2.14	120.75	113.51
3	B	532	PFG	CT2-CA2-NP2	2.14	115.53	110.57
3	A	531	PFG	CA1-NP1-C	2.07	126.53	121.56
3	A	531	PFG	C5-C4A-C8A	2.06	120.94	119.09
2	B	530	UMP	OP3-P-O5'	2.03	111.96	106.67

All (3) chirality outliers are listed below:

Mol	Chain	Res	Type	Atom
2	B	530	UMP	C1'
3	A	531	PFG	N10
3	B	532	PFG	N10

All (20) torsion outliers are listed below:

Mol	Chain	Res	Type	Atoms
3	A	531	PFG	OE1-CD1-NP2-CA2
3	B	532	PFG	OE1-CD1-NP2-CA2
3	B	532	PFG	NP2-CA2-CB2-CG2
3	A	531	PFG	CT2-CA2-NP2-CD1
3	B	532	PFG	CT2-CA2-NP2-CD1
3	A	531	PFG	CT3-CA3-CB3-CG3
3	B	532	PFG	CT2-CA2-CB2-CG2
3	A	531	PFG	CG1-CD1-NP2-CA2
3	A	531	PFG	C6-C9-N10-C14
2	A	529	UMP	C3'-C4'-C5'-O5'
3	A	531	PFG	C15-C14-N10-C9
3	A	531	PFG	NP3-CA3-CB3-CG3
2	B	530	UMP	C2'-C1'-N1-C2
3	B	532	PFG	NP2-CA2-CT2-O22

Continued on next page...

Continued from previous page...

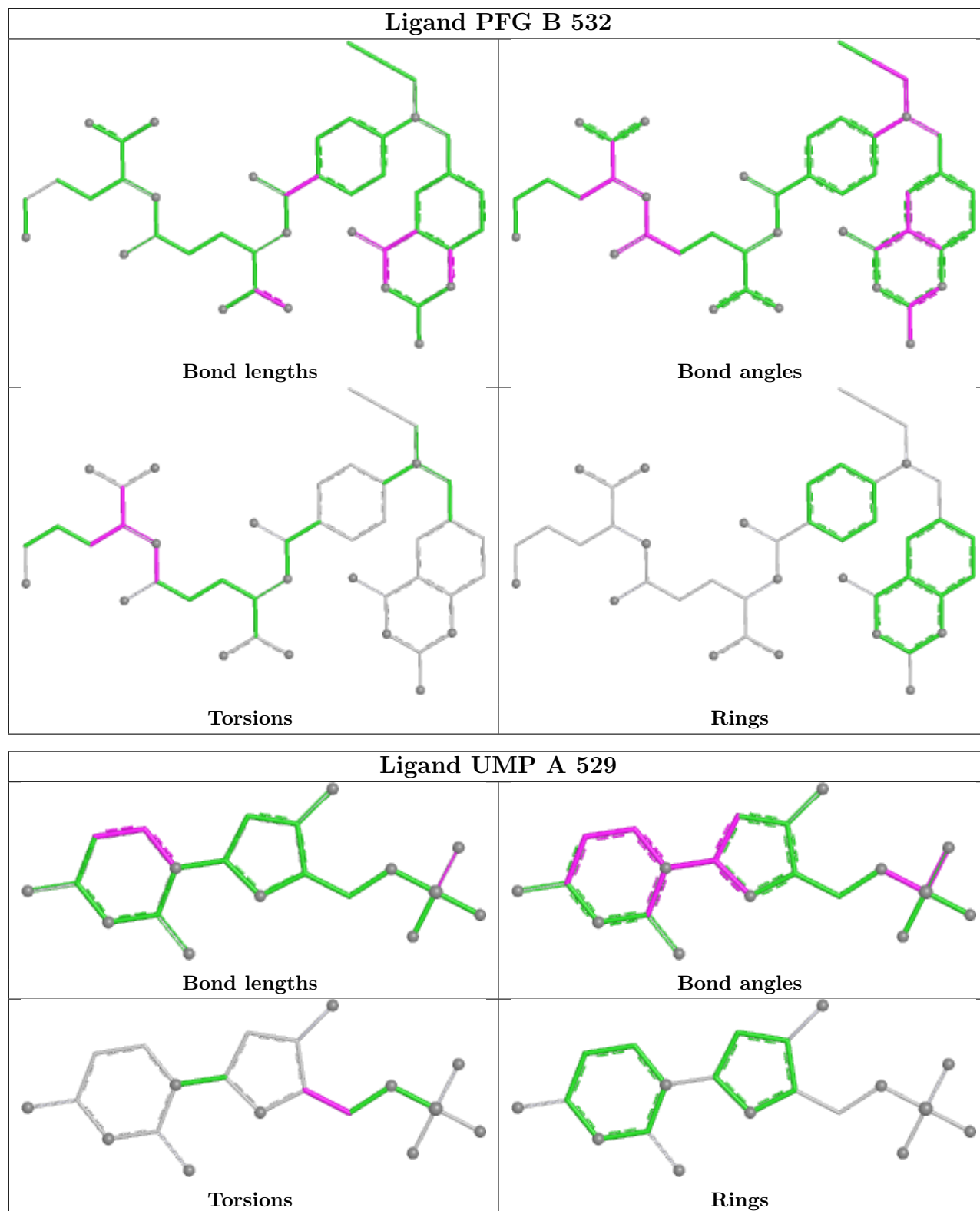
Mol	Chain	Res	Type	Atoms
2	A	529	UMP	O4'-C4'-C5'-O5'
2	B	530	UMP	O4'-C4'-C5'-O5'
3	A	531	PFG	NP2-CA2-CT2-O22
2	B	530	UMP	C3'-C4'-C5'-O5'
3	A	531	PFG	NP2-CA2-CT2-O12
3	B	532	PFG	NP2-CA2-CT2-O12

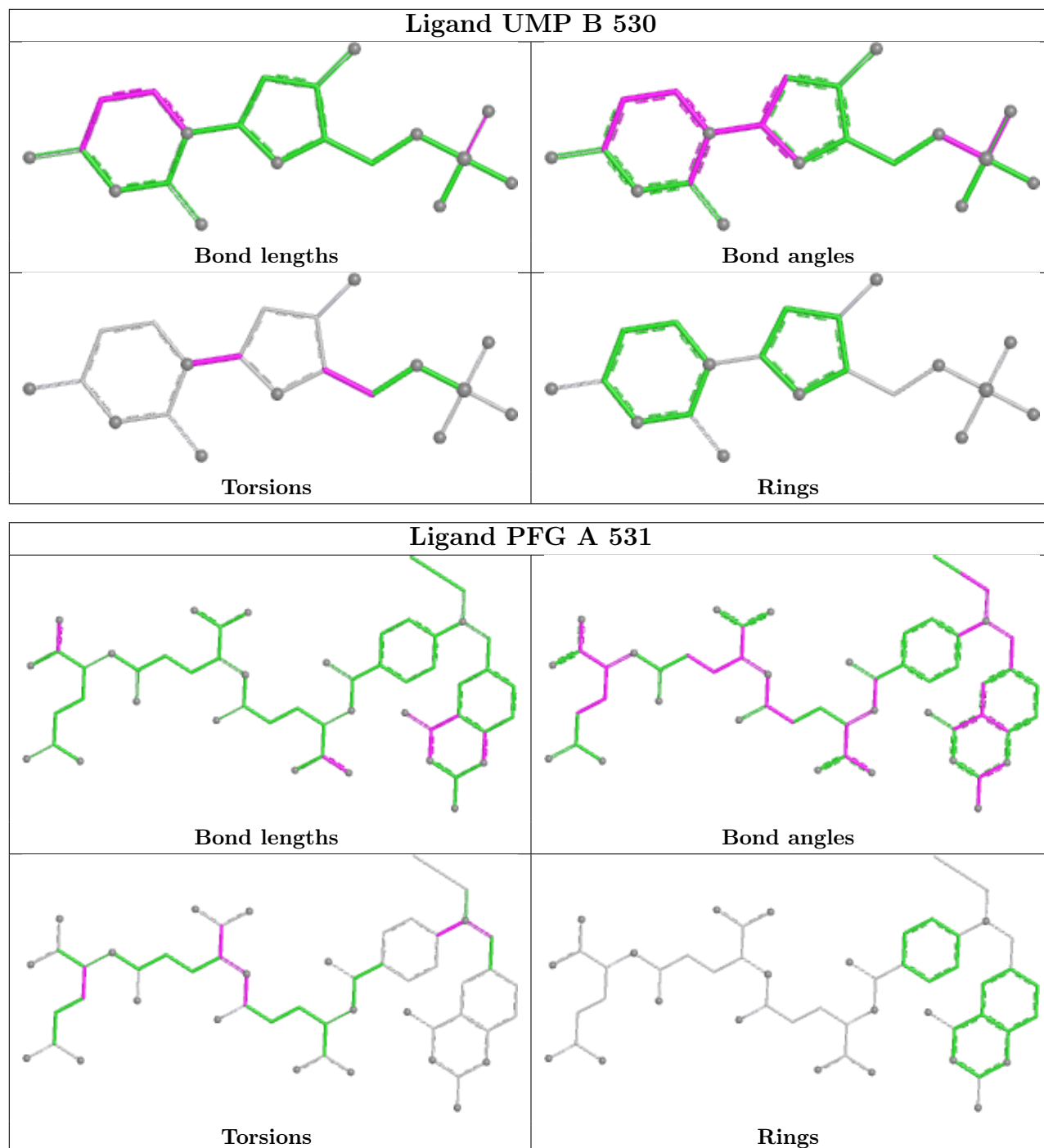
There are no ring outliers.

1 monomer is involved in 2 short contacts:

Mol	Chain	Res	Type	Clashes	Symm-Clashes
3	A	531	PFG	2	0

The following is a two-dimensional graphical depiction of Mogul quality analysis of bond lengths, bond angles, torsion angles, and ring geometry for all instances of the Ligand of Interest. In addition, ligands with molecular weight > 250 and outliers as shown on the validation Tables will also be included. For torsion angles, if less than 5% of the Mogul distribution of torsion angles is within 10 degrees of the torsion angle in question, then that torsion angle is considered an outlier. Any bond that is central to one or more torsion angles identified as an outlier by Mogul will be highlighted in the graph. For rings, the root-mean-square deviation (RMSD) between the ring in question and similar rings identified by Mogul is calculated over all ring torsion angles. If the average RMSD is greater than 60 degrees and the minimal RMSD between the ring in question and any Mogul-identified rings is also greater than 60 degrees, then that ring is considered an outlier. The outliers are highlighted in purple. The color gray indicates Mogul did not find sufficient equivalents in the CSD to analyse the geometry.





5.7 Other polymers [\(i\)](#)

There are no such residues in this entry.

5.8 Polymer linkage issues [\(i\)](#)

There are no chain breaks in this entry.

6 Fit of model and data [i](#)

6.1 Protein, DNA and RNA chains [i](#)

EDS was not executed - this section is therefore empty.

6.2 Non-standard residues in protein, DNA, RNA chains [i](#)

EDS was not executed - this section is therefore empty.

6.3 Carbohydrates [i](#)

EDS was not executed - this section is therefore empty.

6.4 Ligands [i](#)

EDS was not executed - this section is therefore empty.

6.5 Other polymers [i](#)

EDS was not executed - this section is therefore empty.