



Full wwPDB X-ray Structure Validation Report ⓘ

Mar 9, 2026 – 06:00 PM UTC

PDB ID : 3BB8 / pdb_00003bb8
Title : E1 Dehydrase H220K Mutant
Authors : Tsai, S.-C.; Smith, P.
Deposited on : 2007-11-09
Resolution : 2.35 Å(reported)

This is a Full wwPDB X-ray Structure Validation Report for a publicly released PDB entry.

We welcome your comments at validation@mail.wwpdb.org

A user guide is available at

<https://www.wwpdb.org/validation/2017/XrayValidationReportHelp>

with specific help available everywhere you see the ⓘ symbol.

The types of validation reports are described at

<http://www.wwpdb.org/validation/2017/FAQs#types>.

The following versions of software and data (see [references ⓘ](#)) were used in the production of this report:

MolProbity : 4-5-2 with Phenix2.0
Mogul : 2022.3.0, CSD as543be (2022)
Xtrriage (Phenix) : 2.0
EDS : 3.0
Percentile statistics : 20250101.v01 (using entries in the PDB archive January 1st 2025)
CCP4 : 9.0.010 (Gargrove)
Density-Fitness : 1.0.12
Ideal geometry (proteins) : Engh & Huber (2001)
Ideal geometry (DNA, RNA) : Parkinson et al. (1996)
Validation Pipeline (wwPDB-VP) : 2.49

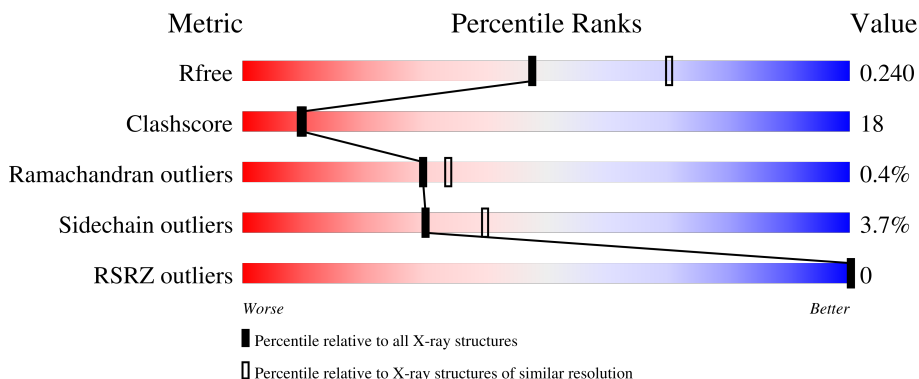
1 Overall quality at a glance

The following experimental techniques were used to determine the structure:

X-RAY DIFFRACTION

The reported resolution of this entry is 2.35 Å.

Percentile scores (ranging between 0-100) for global validation metrics of the entry are shown in the following graphic. The table shows the number of entries on which the scores are based.



Metric	Whole archive (#Entries)	Similar resolution (#Entries, resolution range(Å))
R_{free}	180053	1596 (2.36-2.36)
Clashscore	190562	1663 (2.36-2.36)
Ramachandran outliers	187476	1646 (2.36-2.36)
Sidechain outliers	187428	1646 (2.36-2.36)
RSRZ outliers	180081	1598 (2.36-2.36)

The table below summarises the geometric issues observed across the polymeric chains and their fit to the electron density. The red, orange, yellow and green segments of the lower bar indicate the fraction of residues that contain outliers for ≥ 3 , 2, 1 and 0 types of geometric quality criteria respectively. A grey segment represents the fraction of residues that are not modelled. The numeric value for each fraction is indicated below the corresponding segment, with a dot representing fractions $\leq 5\%$. The upper red bar (where present) indicates the fraction of residues that have poor fit to the electron density. The numeric value is given above the bar.

Mol	Chain	Length	Quality of chain
1	A	437	
1	B	437	

The following table lists non-polymeric compounds, carbohydrate monomers and non-standard residues in protein, DNA, RNA chains that are outliers for geometric or electron-density-fit criteria:

Mol	Type	Chain	Res	Chirality	Geometry	Clashes	Electron density
3	BEN	A	1	-	X	-	-

2 Entry composition [i](#)

There are 3 unique types of molecules in this entry. The entry contains 6594 atoms, of which 0 are hydrogens and 0 are deuteriums.

In the tables below, the ZeroOcc column contains the number of atoms modelled with zero occupancy, the AltConf column contains the number of residues with at least one atom in alternate conformation and the Trace column contains the number of residues modelled with at most 2 atoms.

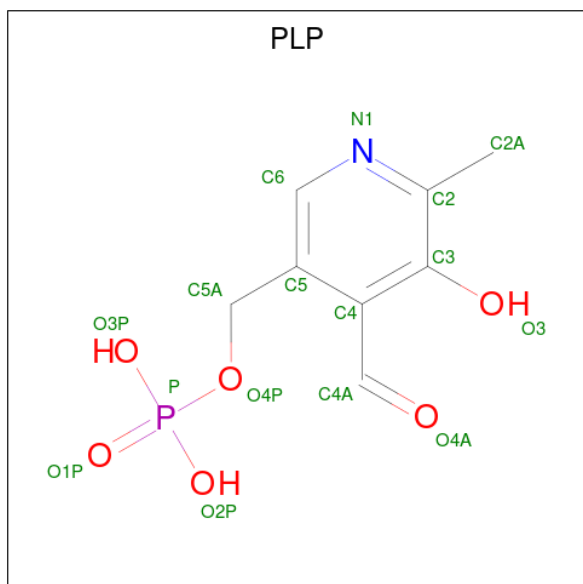
- Molecule 1 is a protein called CDP-4-keto-6-deoxy-D-glucose-3-dehydrase.

Mol	Chain	Residues	Atoms					ZeroOcc	AltConf	Trace
			Total	C	N	O	S			
1	A	420	Total 3273	C 2101	N 534	O 626	S 12	0	0	0
1	B	420	Total 3273	C 2101	N 534	O 626	S 12	0	0	0

There are 2 discrepancies between the modelled and reference sequences:

Chain	Residue	Modelled	Actual	Comment	Reference
A	220	LYS	HIS	engineered mutation	UNP Q57323
B	220	LYS	HIS	engineered mutation	UNP Q57323

- Molecule 2 is PYRIDOXAL-5'-PHOSPHATE (CCD ID: PLP) (formula: C₈H₁₀NO₆P).



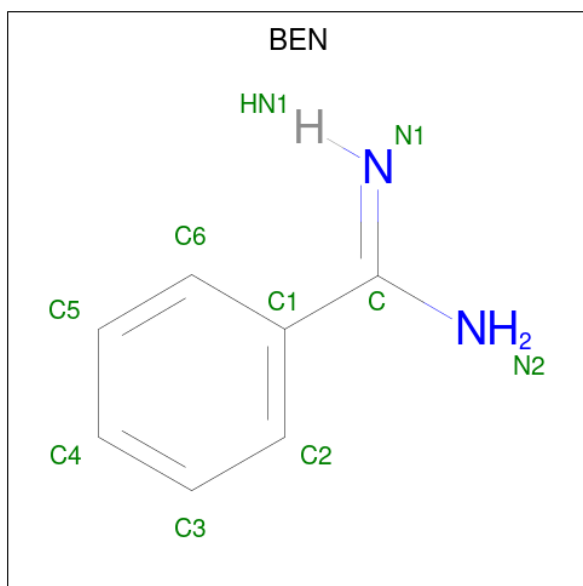
Mol	Chain	Residues	Atoms					ZeroOcc	AltConf
			Total	C	N	O	P		
2	A	1	Total 15	C 8	N 1	O 5	P 1	0	0

Continued on next page...

Continued from previous page...

Mol	Chain	Residues	Atoms					ZeroOcc	AltConf
2	B	1	Total	C	N	O	P	0	0
			15	8	1	5	1		

- Molecule 3 is BENZAMIDINE (CCD ID: BEN) (formula: C₇H₈N₂).

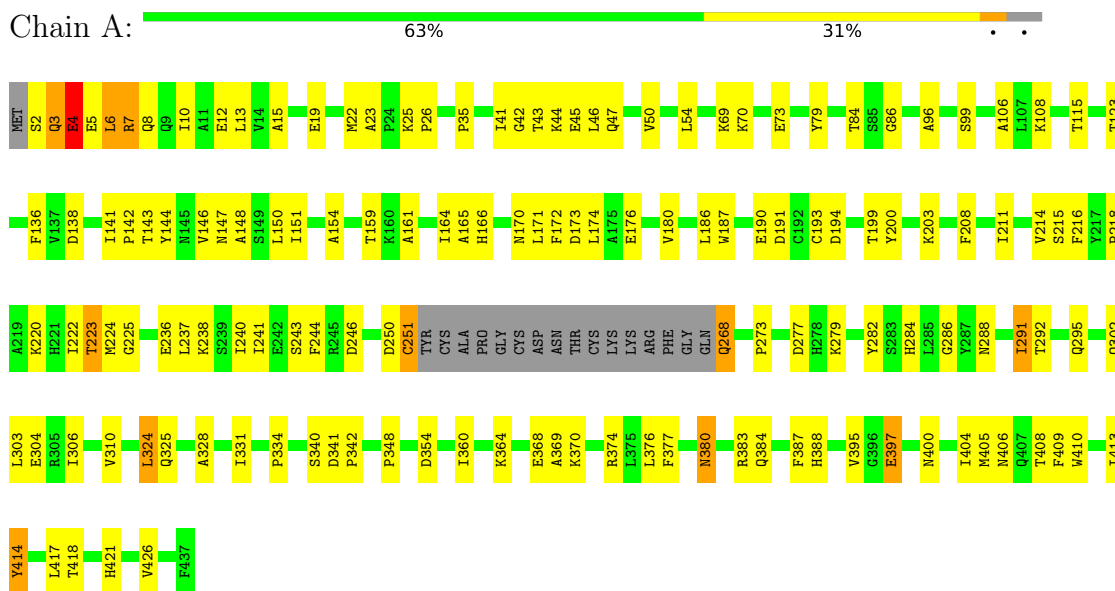


Mol	Chain	Residues	Atoms			ZeroOcc	AltConf
3	A	1	Total	C	N	0	0
			9	7	2		
3	B	1	Total	C	N	0	0
			9	7	2		

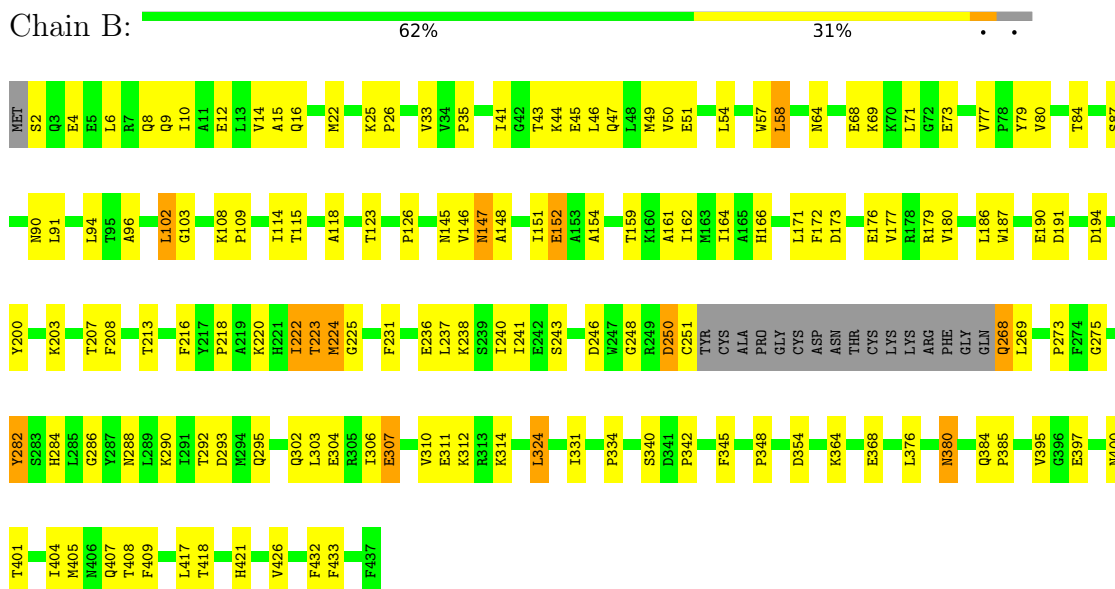
3 Residue-property plots [i](#)

These plots are drawn for all protein, RNA, DNA and oligosaccharide chains in the entry. The first graphic for a chain summarises the proportions of the various outlier classes displayed in the second graphic. The second graphic shows the sequence view annotated by issues in geometry and electron density. Residues are color-coded according to the number of geometric quality criteria for which they contain at least one outlier: green = 0, yellow = 1, orange = 2 and red = 3 or more. A red dot above a residue indicates a poor fit to the electron density ($RSRZ > 2$). Stretches of 2 or more consecutive residues without any outlier are shown as a green connector. Residues present in the sample, but not in the model, are shown in grey.

- Molecule 1: CDP-4-keto-6-deoxy-D-glucose-3-dehydrase



- Molecule 1: CDP-4-keto-6-deoxy-D-glucose-3-dehydrase



4 Data and refinement statistics i

Property	Value	Source
Space group	P 32	Depositor
Cell constants a, b, c, α , β , γ	98.18Å 98.18Å 140.39Å 90.00° 90.00° 120.00°	Depositor
Resolution (Å)	50.00 – 2.35 50.00 – 2.35	Depositor EDS
% Data completeness (in resolution range)	92.9 (50.00-2.35) 92.9 (50.00-2.35)	Depositor EDS
R_{merge}	0.06	Depositor
R_{sym}	(Not available)	Depositor
$\langle I/\sigma(I) \rangle$ ¹	1.06 (at 2.00Å)	Xtrriage
Refinement program	CNS	Depositor
R, R_{free}	0.219 , 0.250 0.236 , 0.240	Depositor DCC
R_{free} test set	10234 reflections (10.04%)	wwPDB-VP
Wilson B-factor (Å ²)	34.4	Xtrriage
Anisotropy	0.006	Xtrriage
Bulk solvent k_{sol} (e/Å ³), B_{sol} (Å ²)	0.32 , 12.8	EDS
L-test for twinning ²	$\langle L \rangle = 0.50$, $\langle L^2 \rangle = 0.33$	Xtrriage
Estimated twinning fraction	0.024 for -h,-k,l 0.489 for h,-h-k,-l 0.024 for -k,-h,-l	Xtrriage
F_o, F_c correlation	0.95	EDS
Total number of atoms	6594	wwPDB-VP
Average B, all atoms (Å ²)	45.0	wwPDB-VP

Xtrriage's analysis on translational NCS is as follows: *The largest off-origin peak in the Patterson function is 4.36% of the height of the origin peak. No significant pseudotranslation is detected.*

¹Intensities estimated from amplitudes.

²Theoretical values of $\langle |L| \rangle$, $\langle L^2 \rangle$ for acentric reflections are 0.5, 0.333 respectively for untwinned datasets, and 0.375, 0.2 for perfectly twinned datasets.

5 Model quality i

5.1 Standard geometry i

Bond lengths and bond angles in the following residue types are not validated in this section: PLP, BEN

The Z score for a bond length (or angle) is the number of standard deviations the observed value is removed from the expected value. A bond length (or angle) with $|Z| > 5$ is considered an outlier worth inspection. RMSZ is the root-mean-square of all Z scores of the bond lengths (or angles).

Mol	Chain	Bond lengths		Bond angles	
		RMSZ	# Z >5	RMSZ	# Z >5
1	A	0.41	0/3346	0.91	8/4540 (0.2%)
1	B	0.40	0/3346	0.92	10/4540 (0.2%)
All	All	0.40	0/6692	0.91	18/9080 (0.2%)

There are no bond length outliers.

All (18) bond angle outliers are listed below:

Mol	Chain	Res	Type	Atoms	Z	Observed(°)	Ideal(°)
1	A	84	THR	N-CA-C	6.66	119.37	111.71
1	B	123	THR	N-CA-C	-6.35	104.23	112.23
1	B	84	THR	N-CA-C	6.26	120.01	112.38
1	A	223	THR	N-CA-C	6.02	118.86	109.52
1	B	223	THR	N-CA-C	6.00	118.52	109.41
1	B	224	MET	N-CA-C	-5.85	103.95	113.19
1	B	286	GLY	N-CA-C	5.69	121.58	112.58
1	B	250	ASP	N-CA-C	5.60	117.55	110.33
1	B	342	PRO	N-CA-C	5.54	119.56	111.03
1	A	414	TYR	CA-C-N	5.43	126.62	119.84
1	A	414	TYR	C-N-CA	5.43	126.62	119.84
1	A	246	ASP	N-CA-C	5.40	117.46	110.65
1	A	123	THR	N-CA-C	-5.40	105.42	112.23
1	B	246	ASP	N-CA-C	5.28	117.30	110.65
1	A	286	GLY	N-CA-C	5.26	120.89	112.58
1	B	282	TYR	N-CA-C	5.12	116.86	108.52
1	A	377	PHE	CB-CA-C	-5.09	110.73	116.63
1	B	407	GLN	N-CA-CB	-5.00	103.75	110.95

There are no chirality outliers.

There are no planarity outliers.

5.2 Too-close contacts

In the following table, the Non-H and H(model) columns list the number of non-hydrogen atoms and hydrogen atoms in the chain respectively. The H(added) column lists the number of hydrogen atoms added and optimized by MolProbity. The Clashes column lists the number of clashes within the asymmetric unit, whereas Symm-Clashes lists symmetry-related clashes.

Mol	Chain	Non-H	H(model)	H(added)	Clashes	Symm-Clashes
1	A	3273	0	3227	133	0
1	B	3273	0	3227	120	0
2	A	15	0	6	0	0
2	B	15	0	6	1	0
3	A	9	0	7	0	0
3	B	9	0	7	2	0
All	All	6594	0	6480	229	0

The all-atom clashscore is defined as the number of clashes found per 1000 atoms (including hydrogen atoms). The all-atom clashscore for this structure is 18.

All (229) close contacts within the same asymmetric unit are listed below, sorted by their clash magnitude.

Atom-1	Atom-2	Interatomic distance (Å)	Clash overlap (Å)
1:A:6:LEU:HD11	1:B:16:GLN:HG3	1.18	1.14
1:A:171:LEU:HD22	1:A:200:TYR:HB2	1.32	1.12
1:A:3:GLN:OE1	1:A:3:GLN:HA	1.43	1.10
1:A:6:LEU:HD11	1:B:16:GLN:CG	1.85	1.06
1:A:6:LEU:CD1	1:B:16:GLN:HG3	1.87	1.05
1:A:211:ILE:HD11	1:A:237:LEU:HD13	1.51	0.92
1:A:4:GLU:HA	1:A:4:GLU:OE1	1.69	0.91
1:A:237:LEU:O	1:A:241:ILE:HG12	1.68	0.90
1:A:171:LEU:HD13	1:A:340:SER:HB2	1.55	0.88
1:B:57:TRP:O	1:B:58:LEU:HB2	1.75	0.87
1:B:171:LEU:HD22	1:B:200:TYR:HB2	1.57	0.85
1:A:223:THR:H	1:A:302:GLN:HE21	1.25	0.84
1:A:141:ILE:HG23	1:A:142:PRO:HA	1.60	0.84
1:A:418:THR:H	1:A:421:HIS:HD2	1.26	0.83
1:B:96:ALA:HB2	1:B:241:ILE:HD13	1.63	0.80
1:A:15:ALA:HA	1:A:43:THR:HG23	1.64	0.79
1:A:216:PHE:CD1	1:A:224:MET:HE3	2.17	0.79
1:A:141:ILE:CG2	1:A:142:PRO:HA	2.12	0.78
1:A:171:LEU:CD2	1:A:200:TYR:HB2	2.13	0.78
1:A:376:LEU:HD23	1:A:404:ILE:HG21	1.66	0.77
1:A:4:GLU:OE1	1:A:4:GLU:CA	2.32	0.77

Continued on next page...

Continued from previous page...

Atom-1	Atom-2	Interatomic distance (Å)	Clash overlap (Å)
1:A:384:GLN:NE2	1:B:282:TYR:H	1.84	0.76
1:A:324:LEU:HD13	1:A:426:VAL:HG22	1.68	0.75
1:B:171:LEU:HD13	1:B:340:SER:HB2	1.66	0.75
1:A:236:GLU:O	1:A:240:ILE:HD13	1.88	0.74
1:B:223:THR:H	1:B:302:GLN:HE21	1.37	0.73
1:A:418:THR:H	1:A:421:HIS:CD2	2.06	0.72
1:A:96:ALA:CB	1:A:241:ILE:HD13	2.20	0.71
1:A:176:GLU:O	1:A:180:VAL:HG23	1.89	0.71
1:A:218:PRO:HD3	1:A:225:GLY:O	1.90	0.71
1:B:380:ASN:C	1:B:380:ASN:HD22	1.97	0.71
1:B:114:ILE:HB	1:B:162:ILE:HD13	1.71	0.71
1:A:6:LEU:HD11	1:B:16:GLN:NE2	2.07	0.69
1:B:237:LEU:O	1:B:241:ILE:HG12	1.93	0.69
1:A:211:ILE:CD1	1:A:237:LEU:HD13	2.20	0.69
1:B:25:LYS:HD2	1:B:26:PRO:HD2	1.75	0.68
1:A:380:ASN:C	1:A:380:ASN:HD22	2.02	0.67
1:A:154:ALA:HA	1:A:395:VAL:HG21	1.75	0.67
1:B:400:ASN:O	1:B:404:ILE:HG12	1.94	0.67
1:A:3:GLN:OE1	1:A:3:GLN:CA	2.30	0.66
1:A:96:ALA:HB2	1:A:241:ILE:HD13	1.78	0.66
1:A:6:LEU:HD11	1:B:16:GLN:CD	2.21	0.66
1:A:146:VAL:HG21	1:A:151:ILE:HD11	1.78	0.66
1:B:324:LEU:HD13	1:B:426:VAL:HG22	1.76	0.66
1:A:364:LYS:O	1:A:368:GLU:HG3	1.96	0.65
1:A:141:ILE:CG2	1:A:142:PRO:CA	2.74	0.65
1:B:376:LEU:HD23	1:B:404:ILE:HG21	1.80	0.64
1:B:15:ALA:HA	1:B:43:THR:HG23	1.80	0.63
1:A:6:LEU:HD11	1:B:16:GLN:HE21	1.63	0.63
1:A:3:GLN:C	1:A:5:GLU:H	2.06	0.63
1:B:222:ILE:HB	1:B:302:GLN:HB3	1.79	0.63
1:B:96:ALA:CB	1:B:241:ILE:HD13	2.27	0.62
1:B:148:ALA:HB1	1:B:176:GLU:CG	2.30	0.62
1:B:218:PRO:HD3	1:B:225:GLY:O	2.00	0.61
1:B:418:THR:H	1:B:421:HIS:CD2	2.18	0.61
1:B:203:LYS:HB3	1:B:208:PHE:CZ	2.36	0.61
1:A:282:TYR:H	1:B:384:GLN:NE2	1.99	0.60
1:B:161:ALA:HB2	1:B:187:TRP:HB2	1.84	0.60
1:A:334:PRO:HB3	1:A:348:PRO:HG2	1.82	0.60
1:B:364:LYS:O	1:B:368:GLU:HG3	2.02	0.60
1:A:6:LEU:CD1	1:B:16:GLN:CG	2.63	0.59
1:B:154:ALA:HA	1:B:395:VAL:HG21	1.85	0.59

Continued on next page...

Continued from previous page...

Atom-1	Atom-2	Interatomic distance (Å)	Clash overlap (Å)
1:B:79:TYR:HB3	1:B:238:LYS:HG3	1.84	0.59
1:B:306:ILE:O	1:B:310:VAL:HG23	2.03	0.59
1:A:384:GLN:HE22	1:B:282:TYR:H	1.49	0.59
1:A:2:SER:O	1:A:6:LEU:HB2	2.03	0.59
1:B:418:THR:H	1:B:421:HIS:HD2	1.48	0.58
1:B:166:HIS:HE1	1:B:190:GLU:OE2	1.86	0.58
1:B:8:GLN:O	1:B:12:GLU:HG2	2.04	0.58
1:B:6:LEU:O	1:B:10:ILE:HG13	2.04	0.58
1:B:334:PRO:HB3	1:B:348:PRO:HG2	1.85	0.58
1:A:268:GLN:HE21	1:A:268:GLN:C	2.11	0.57
1:B:288:ASN:HD21	1:B:290:LYS:HZ2	1.52	0.57
1:A:292:THR:HG21	1:B:295:GLN:HG2	1.86	0.57
1:A:203:LYS:HB3	1:A:208:PHE:CZ	2.41	0.56
1:A:388:HIS:CD2	1:B:269:LEU:HD22	2.41	0.56
1:B:238:LYS:HD3	1:B:238:LYS:C	2.30	0.56
1:B:57:TRP:O	1:B:58:LEU:CB	2.46	0.56
1:B:166:HIS:CD2	1:B:171:LEU:HA	2.41	0.56
1:B:268:GLN:C	1:B:268:GLN:HE21	2.13	0.56
1:B:46:LEU:O	1:B:50:VAL:HG23	2.06	0.56
1:A:147:ASN:HB3	1:A:150:LEU:HD12	1.88	0.56
1:B:71:LEU:HD23	1:B:303:LEU:HD21	1.88	0.56
1:B:118:ALA:HB2	1:B:401:THR:HG23	1.88	0.55
1:A:69:LYS:O	1:A:73:GLU:HG3	2.06	0.55
1:B:2:SER:O	1:B:6:LEU:HG	2.06	0.55
1:B:148:ALA:HB1	1:B:176:GLU:HG2	1.88	0.55
1:A:44:LYS:HE2	1:A:304:GLU:OE2	2.07	0.54
1:A:141:ILE:HG22	1:A:142:PRO:CA	2.38	0.54
1:B:90:ASN:HD22	1:B:213:THR:HG21	1.73	0.54
1:A:3:GLN:C	1:A:5:GLU:N	2.65	0.54
1:B:159:THR:HG22	1:B:186:LEU:HD22	1.90	0.54
1:B:80:VAL:HG22	1:B:231:PHE:HB3	1.90	0.53
1:B:250:ASP:OD1	1:B:251:CYS:N	2.41	0.53
1:B:166:HIS:HD2	1:B:171:LEU:HA	1.72	0.53
1:A:43:THR:O	1:A:47:GLN:HG3	2.09	0.53
1:A:141:ILE:HG22	1:A:142:PRO:HB3	1.90	0.53
1:B:243:SER:OG	1:B:284:HIS:HD2	1.90	0.53
1:A:8:GLN:O	1:A:12:GLU:HG2	2.08	0.53
1:A:86:GLY:HA3	1:A:215:SER:HB2	1.91	0.53
1:A:273:PRO:HD3	1:B:405:MET:SD	2.49	0.53
1:B:384:GLN:HE21	1:B:385:PRO:HD2	1.73	0.53
1:A:216:PHE:CE1	1:A:224:MET:HE3	2.43	0.52

Continued on next page...

Continued from previous page...

Atom-1	Atom-2	Interatomic distance (Å)	Clash overlap (Å)
1:A:7:ARG:HH12	1:A:54:LEU:HB2	1.75	0.52
1:A:25:LYS:HD2	1:A:26:PRO:HD2	1.92	0.52
1:A:306:ILE:O	1:A:310:VAL:HG23	2.10	0.52
1:A:70:LYS:HB3	1:A:303:LEU:HD13	1.93	0.51
1:B:69:LYS:O	1:B:73:GLU:HG3	2.11	0.51
1:A:5:GLU:C	1:A:7:ARG:H	2.17	0.51
1:A:360:ILE:HD11	1:B:275:GLY:HA3	1.92	0.51
1:B:64:ASN:ND2	1:B:68:GLU:OE2	2.43	0.51
1:B:164:ILE:HG13	1:B:172:PHE:CE2	2.46	0.51
1:B:33:VAL:HG23	1:B:35:PRO:HD3	1.92	0.51
1:A:166:HIS:HD2	1:A:171:LEU:HA	1.75	0.50
1:A:96:ALA:HA	1:A:244:PHE:CE2	2.47	0.50
1:A:303:LEU:O	1:A:306:ILE:HG22	2.11	0.50
1:B:151:ILE:HG22	1:B:180:VAL:HG11	1.93	0.50
1:B:354:ASP:OD1	1:B:354:ASP:C	2.54	0.50
1:A:147:ASN:HD22	1:A:147:ASN:C	2.18	0.50
1:B:191:ASP:HA	1:B:213:THR:OG1	2.12	0.50
1:B:384:GLN:NE2	1:B:385:PRO:HD2	2.27	0.50
1:B:404:ILE:HA	1:B:408:THR:OG1	2.11	0.50
1:A:4:GLU:OE1	1:A:4:GLU:O	2.30	0.49
1:A:166:HIS:HE1	1:A:190:GLU:OE2	1.95	0.49
1:A:13:LEU:HD11	1:B:9:GLN:HE21	1.77	0.49
1:A:282:TYR:O	1:B:385:PRO:HG2	2.13	0.49
1:A:7:ARG:NH1	1:A:54:LEU:HB2	2.28	0.49
1:A:295:GLN:HG2	1:B:292:THR:HG21	1.94	0.49
1:B:216:PHE:CD1	1:B:224:MET:HE3	2.48	0.48
1:A:4:GLU:O	1:A:8:GLN:HG3	2.13	0.48
1:A:141:ILE:HG22	1:A:142:PRO:CB	2.44	0.48
1:A:171:LEU:HD22	1:A:200:TYR:CB	2.24	0.48
1:B:115:THR:HA	1:B:164:ILE:HG22	1.96	0.48
1:A:161:ALA:HB2	1:A:187:TRP:HB2	1.96	0.48
1:B:22:MET:HG2	1:B:41:ILE:O	2.14	0.48
1:B:172:PHE:CD1	1:B:177:VAL:HG21	2.50	0.47
1:A:331:ILE:HD12	1:A:331:ILE:O	2.14	0.47
1:B:194:ASP:OD2	2:B:500:PLP:O3	2.32	0.47
1:A:369:ALA:O	1:A:370:LYS:HB2	2.13	0.47
1:A:408:THR:HG22	1:A:409:PHE:N	2.29	0.47
1:A:19:GLU:O	1:A:23:ALA:HB2	2.15	0.47
1:A:35:PRO:HG2	1:A:414:TYR:OH	2.14	0.47
1:A:159:THR:HG22	1:A:186:LEU:HD22	1.96	0.47
1:B:108:LYS:O	1:B:109:PRO:C	2.57	0.47

Continued on next page...

Continued from previous page...

Atom-1	Atom-2	Interatomic distance (Å)	Clash overlap (Å)
1:A:6:LEU:O	1:A:10:ILE:HG13	2.14	0.47
1:B:147:ASN:C	1:B:147:ASN:HD22	2.21	0.47
1:B:176:GLU:O	1:B:180:VAL:HG23	2.14	0.47
1:A:354:ASP:OD1	1:A:354:ASP:C	2.58	0.47
1:B:145:ASN:HD22	1:B:172:PHE:HB3	1.80	0.46
1:A:222:ILE:HB	1:A:302:GLN:HB3	1.97	0.46
1:A:5:GLU:C	1:A:7:ARG:N	2.72	0.46
1:A:46:LEU:HD23	1:B:54:LEU:HA	1.97	0.46
1:A:199:THR:OG1	1:A:341:ASP:HB3	2.15	0.46
1:B:418:THR:O	1:B:421:HIS:HB2	2.16	0.46
1:A:288:ASN:HB3	1:B:87:SER:HB2	1.97	0.46
1:B:114:ILE:HB	1:B:162:ILE:CD1	2.44	0.46
1:A:250:ASP:OD1	1:A:251:CYS:N	2.44	0.46
1:A:194:ASP:OD1	1:A:220:LYS:CE	2.64	0.46
1:A:6:LEU:HD21	1:B:16:GLN:NE2	2.31	0.46
1:A:143:THR:HB	1:A:170:ASN:ND2	2.31	0.46
1:B:146:VAL:HG12	1:B:172:PHE:HB2	1.98	0.46
1:A:148:ALA:HB2	1:A:173:ASP:HB3	1.98	0.45
1:B:220:LYS:HD3	1:B:345:PHE:CE2	2.51	0.45
1:B:433:PHE:HA	3:B:1:BEN:C3	2.46	0.45
1:A:166:HIS:CD2	1:A:171:LEU:HA	2.51	0.45
1:B:250:ASP:O	1:B:251:CYS:HB3	2.16	0.45
1:A:291:ILE:HD13	1:A:291:ILE:H	1.81	0.45
1:B:288:ASN:HD21	1:B:290:LYS:NZ	2.14	0.45
1:A:170:ASN:HA	1:A:342:PRO:HB3	1.99	0.45
1:A:164:ILE:HG22	1:A:165:ALA:N	2.32	0.45
1:A:50:VAL:HG22	1:B:50:VAL:HG13	1.99	0.45
1:A:238:LYS:HD3	1:A:238:LYS:C	2.42	0.44
1:B:91:LEU:HA	1:B:126:PRO:HB3	1.99	0.44
1:B:290:LYS:HZ2	1:B:290:LYS:HB2	1.83	0.44
1:B:310:VAL:HG12	1:B:314:LYS:HE3	2.00	0.44
1:A:406:ASN:OD1	1:B:273:PRO:HB3	2.17	0.44
1:A:138:ASP:OD2	1:A:400:ASN:HB2	2.17	0.44
1:A:22:MET:HG2	1:A:41:ILE:O	2.18	0.44
1:B:176:GLU:OE1	1:B:179:ARG:NH1	2.50	0.44
1:B:288:ASN:C	1:B:288:ASN:HD22	2.25	0.44
1:B:77:VAL:CG1	1:B:207:THR:HG22	2.47	0.43
1:B:408:THR:HG22	1:B:409:PHE:N	2.33	0.43
1:B:94:LEU:HD13	1:B:94:LEU:O	2.18	0.43
1:B:161:ALA:CB	1:B:187:TRP:HB2	2.49	0.43
1:A:325:GLN:HE21	1:A:325:GLN:HB2	1.64	0.43

Continued on next page...

Continued from previous page...

Atom-1	Atom-2	Interatomic distance (Å)	Clash overlap (Å)
1:B:115:THR:HA	1:B:164:ILE:CG2	2.48	0.43
1:A:99:SER:OG	1:A:284:HIS:HE1	2.00	0.42
1:A:115:THR:O	1:A:136:PHE:HA	2.19	0.42
1:A:166:HIS:NE2	1:A:172:PHE:CE2	2.87	0.42
1:A:277:ASP:OD1	1:A:279:LYS:HB2	2.19	0.42
1:B:173:ASP:O	1:B:177:VAL:HG23	2.19	0.42
1:A:174:LEU:HD13	1:A:208:PHE:CD2	2.54	0.42
1:A:138:ASP:HB2	1:A:397:GLU:O	2.19	0.42
1:A:376:LEU:HD23	1:A:404:ILE:CG2	2.44	0.42
1:A:383:ARG:HD2	1:A:405:MET:SD	2.60	0.42
1:A:374:ARG:HB2	1:A:410:TRP:CE2	2.54	0.42
1:B:43:THR:O	1:B:47:GLN:HG3	2.18	0.42
1:B:243:SER:O	1:B:248:GLY:HA2	2.20	0.42
1:B:250:ASP:O	1:B:251:CYS:CB	2.67	0.42
1:B:432:PHE:O	3:B:1:BEN:H3	2.20	0.42
1:A:193:CYS:HA	1:A:214:VAL:HA	2.01	0.42
1:A:25:LYS:HD2	1:A:26:PRO:CD	2.49	0.42
1:A:380:ASN:C	1:A:380:ASN:ND2	2.70	0.42
1:B:238:LYS:HD3	1:B:238:LYS:O	2.19	0.42
1:A:70:LYS:HD2	1:A:303:LEU:HB3	2.02	0.41
1:A:194:ASP:OD1	1:A:220:LYS:HE2	2.20	0.41
1:A:223:THR:N	1:A:302:GLN:HE21	2.04	0.41
1:B:312:LYS:HE3	1:B:312:LYS:HB2	1.92	0.41
1:B:44:LYS:HE2	1:B:304:GLU:OE2	2.19	0.41
1:A:2:SER:O	1:A:6:LEU:HG	2.21	0.41
1:A:79:TYR:HB3	1:A:238:LYS:HG3	2.01	0.41
1:A:106:ALA:O	1:A:108:LYS:HD3	2.20	0.41
1:A:142:PRO:O	1:A:144:TYR:CE1	2.73	0.41
1:A:413:ILE:HD12	1:A:413:ILE:C	2.45	0.41
1:A:13:LEU:HD11	1:B:9:GLN:NE2	2.35	0.41
1:B:4:GLU:OE1	1:B:4:GLU:HA	2.21	0.41
1:B:223:THR:N	1:B:302:GLN:HE21	2.11	0.41
1:B:45:GLU:O	1:B:49:MET:HG3	2.21	0.41
1:A:42:GLY:N	1:A:45:GLU:OE1	2.37	0.41
1:A:166:HIS:CE1	1:A:172:PHE:CE2	3.09	0.41
1:B:102:LEU:O	1:B:103:GLY:C	2.65	0.40
1:A:148:ALA:HB1	1:A:176:GLU:CG	2.52	0.40
1:B:152:GLU:OE1	1:B:179:ARG:NH2	2.54	0.40
1:B:306:ILE:HG23	1:B:307:GLU:N	2.36	0.40
1:A:10:ILE:HD13	1:B:14:VAL:HG12	2.03	0.40
1:A:165:ALA:HB2	1:A:191:ASP:HB3	2.03	0.40

Continued on next page...

Continued from previous page...

Atom-1	Atom-2	Interatomic distance (Å)	Clash overlap (Å)
1:A:243:SER:OG	1:A:284:HIS:HD2	2.05	0.40
1:A:400:ASN:O	1:A:404:ILE:HG13	2.21	0.40
1:B:236:GLU:O	1:B:240:ILE:HG13	2.22	0.40

There are no symmetry-related clashes.

5.3 Torsion angles [i](#)

5.3.1 Protein backbone [i](#)

In the following table, the Percentiles column shows the percent Ramachandran outliers of the chain as a percentile score with respect to all X-ray entries followed by that with respect to entries of similar resolution.

The Analysed column shows the number of residues for which the backbone conformation was analysed, and the total number of residues.

Mol	Chain	Analysed	Favoured	Allowed	Outliers	Percentiles
1	A	416/437 (95%)	382 (92%)	32 (8%)	2 (0%)	24 27
1	B	416/437 (95%)	386 (93%)	29 (7%)	1 (0%)	43 52
All	All	832/874 (95%)	768 (92%)	61 (7%)	3 (0%)	30 34

All (3) Ramachandran outliers are listed below:

Mol	Chain	Res	Type
1	B	58	LEU
1	A	4	GLU
1	A	328	ALA

5.3.2 Protein sidechains [i](#)

In the following table, the Percentiles column shows the percent sidechain outliers of the chain as a percentile score with respect to all X-ray entries followed by that with respect to entries of similar resolution.

The Analysed column shows the number of residues for which the sidechain conformation was analysed, and the total number of residues.

Continued on next page...

Continued from previous page...

Mol	Chain	Analysed	Rotameric	Outliers	Percentiles	
1	A	351/365 (96%)	339 (97%)	12 (3%)	32	43
1	B	351/365 (96%)	337 (96%)	14 (4%)	28	37
All	All	702/730 (96%)	676 (96%)	26 (4%)	30	40

All (26) residues with a non-rotameric sidechain are listed below:

Mol	Chain	Res	Type
1	A	3	GLN
1	A	4	GLU
1	A	6	LEU
1	A	7	ARG
1	A	251	CYS
1	A	268	GLN
1	A	291	ILE
1	A	324	LEU
1	A	380	ASN
1	A	387	PHE
1	A	397	GLU
1	A	417	LEU
1	B	51	GLU
1	B	102	LEU
1	B	147	ASN
1	B	152	GLU
1	B	222	ILE
1	B	268	GLN
1	B	293	ASP
1	B	307	GLU
1	B	311	GLU
1	B	324	LEU
1	B	331	ILE
1	B	380	ASN
1	B	397	GLU
1	B	417	LEU

Sometimes sidechains can be flipped to improve hydrogen bonding and reduce clashes. All (36) such sidechains are listed below:

Mol	Chain	Res	Type
1	A	9	GLN

Continued on next page...

Continued from previous page...

Mol	Chain	Res	Type
1	A	16	GLN
1	A	47	GLN
1	A	90	ASN
1	A	145	ASN
1	A	147	ASN
1	A	166	HIS
1	A	268	GLN
1	A	284	HIS
1	A	288	ASN
1	A	302	GLN
1	A	316	ASN
1	A	325	GLN
1	A	380	ASN
1	A	384	GLN
1	A	400	ASN
1	A	421	HIS
1	B	8	GLN
1	B	9	GLN
1	B	16	GLN
1	B	64	ASN
1	B	90	ASN
1	B	145	ASN
1	B	147	ASN
1	B	166	HIS
1	B	268	GLN
1	B	278	HIS
1	B	284	HIS
1	B	288	ASN
1	B	302	GLN
1	B	316	ASN
1	B	325	GLN
1	B	380	ASN
1	B	384	GLN
1	B	400	ASN
1	B	421	HIS

5.3.3 RNA

There are no RNA molecules in this entry.

5.4 Non-standard residues in protein, DNA, RNA chains [i](#)

There are no non-standard protein/DNA/RNA residues in this entry.

5.5 Carbohydrates [i](#)

There are no oligosaccharides in this entry.

5.6 Ligand geometry [i](#)

4 ligands are modelled in this entry.

In the following table, the Counts columns list the number of bonds (or angles) for which Mogul statistics could be retrieved, the number of bonds (or angles) that are observed in the model and the number of bonds (or angles) that are defined in the Chemical Component Dictionary. The Link column lists molecule types, if any, to which the group is linked. The Z score for a bond length (or angle) is the number of standard deviations the observed value is removed from the expected value. A bond length (or angle) with $|Z| > 2$ is considered an outlier worth inspection. RMSZ is the root-mean-square of all Z scores of the bond lengths (or angles).

Mol	Type	Chain	Res	Link	Bond lengths			Bond angles		
					Counts	RMSZ	# Z > 2	Counts	RMSZ	# Z > 2
3	BEN	B	1	-	9,9,9	1.60	2 (22%)	7,11,11	3.22	3 (42%)
2	PLP	A	500	1	15,15,16	2.16	8 (53%)	21,22,23	1.68	5 (23%)
3	BEN	A	1	-	9,9,9	1.60	2 (22%)	7,11,11	3.23	4 (57%)
2	PLP	B	500	1	15,15,16	2.08	8 (53%)	21,22,23	1.65	5 (23%)

In the following table, the Chirals column lists the number of chiral outliers, the number of chiral centers analysed, the number of these observed in the model and the number defined in the Chemical Component Dictionary. Similar counts are reported in the Torsion and Rings columns. '-' means no outliers of that kind were identified.

Mol	Type	Chain	Res	Link	Chirals	Torsions	Rings
3	BEN	B	1	-	-	4/4/4/4	0/1/1/1
2	PLP	A	500	1	-	2/6/6/8	0/1/1/1
3	BEN	A	1	-	-	4/4/4/4	0/1/1/1
2	PLP	B	500	1	-	2/6/6/8	0/1/1/1

All (20) bond length outliers are listed below:

Mol	Chain	Res	Type	Atoms	Z	Observed(Å)	Ideal(Å)
2	A	500	PLP	C6-C5	3.84	1.45	1.37

Continued on next page...

Continued from previous page...

Mol	Chain	Res	Type	Atoms	Z	Observed(Å)	Ideal(Å)
2	B	500	PLP	C6-C5	3.79	1.45	1.37
2	B	500	PLP	C3-C4	3.53	1.46	1.40
2	A	500	PLP	C3-C4	3.32	1.46	1.40
2	A	500	PLP	C5-C4	2.93	1.43	1.40
3	B	1	BEN	C3-C2	-2.93	1.33	1.38
3	A	1	BEN	C3-C2	-2.90	1.34	1.38
2	A	500	PLP	C2-N1	2.89	1.39	1.33
2	A	500	PLP	C4A-C4	2.83	1.57	1.51
2	B	500	PLP	C2-N1	2.67	1.38	1.33
2	B	500	PLP	P-O2P	2.65	1.64	1.54
2	A	500	PLP	P-O2P	2.57	1.64	1.54
2	A	500	PLP	O4P-C5A	-2.36	1.36	1.44
2	B	500	PLP	O4P-C5A	-2.35	1.36	1.44
2	B	500	PLP	C3-C2	2.24	1.43	1.41
2	B	500	PLP	C5-C4	2.14	1.43	1.40
3	A	1	BEN	C2-C1	-2.13	1.36	1.39
3	B	1	BEN	C2-C1	-2.12	1.36	1.39
2	A	500	PLP	C3-C2	2.08	1.43	1.41
2	B	500	PLP	C4A-C4	2.01	1.55	1.51

All (17) bond angle outliers are listed below:

Mol	Chain	Res	Type	Atoms	Z	Observed(°)	Ideal(°)
3	A	1	BEN	C3-C2-C1	6.33	126.59	120.36
3	B	1	BEN	C3-C2-C1	6.32	126.58	120.36
3	A	1	BEN	C6-C1-C2	-4.36	113.02	118.57
3	B	1	BEN	C6-C1-C2	-4.35	113.03	118.57
2	A	500	PLP	C4A-C4-C5	3.62	124.67	120.94
2	A	500	PLP	C5A-C5-C6	-3.49	113.68	119.36
2	B	500	PLP	C5A-C5-C6	-3.36	113.89	119.36
2	B	500	PLP	C4A-C4-C5	3.20	124.24	120.94
2	B	500	PLP	O4P-C5A-C5	2.93	114.84	109.36
2	A	500	PLP	O4P-C5A-C5	2.62	114.26	109.36
2	B	500	PLP	C5A-C5-C4	2.22	127.03	122.64
3	A	1	BEN	C5-C6-C1	2.21	122.54	120.36
3	B	1	BEN	C5-C6-C1	2.21	122.53	120.36
2	A	500	PLP	C5A-C5-C4	2.17	126.93	122.64
3	A	1	BEN	C1-C-N2	2.04	121.11	118.01
2	B	500	PLP	O3-C3-C2	2.04	121.81	117.58
2	A	500	PLP	O3-C3-C2	2.03	121.79	117.58

There are no chirality outliers.

All (12) torsion outliers are listed below:

Mol	Chain	Res	Type	Atoms
2	A	500	PLP	C4-C5-C5A-O4P
2	A	500	PLP	C6-C5-C5A-O4P
2	B	500	PLP	C4-C5-C5A-O4P
2	B	500	PLP	C6-C5-C5A-O4P
3	A	1	BEN	N2-C-C1-C2
3	A	1	BEN	N2-C-C1-C6
3	B	1	BEN	N2-C-C1-C2
3	B	1	BEN	N2-C-C1-C6
3	A	1	BEN	N1-C-C1-C2
3	A	1	BEN	N1-C-C1-C6
3	B	1	BEN	N1-C-C1-C2
3	B	1	BEN	N1-C-C1-C6

There are no ring outliers.

2 monomers are involved in 3 short contacts:

Mol	Chain	Res	Type	Clashes	Symm-Clashes
3	B	1	BEN	2	0
2	B	500	PLP	1	0

5.7 Other polymers [i](#)

There are no such residues in this entry.

5.8 Polymer linkage issues [i](#)

There are no chain breaks in this entry.

6 Fit of model and data [i](#)

6.1 Protein, DNA and RNA chains [i](#)

In the following table, the column labelled ‘#RSRZ> 2’ contains the number (and percentage) of RSRZ outliers, followed by percent RSRZ outliers for the chain as percentile scores relative to all X-ray entries and entries of similar resolution. The OWAB column contains the minimum, median, 95th percentile and maximum values of the occupancy-weighted average B-factor per residue. The column labelled ‘Q< 0.9’ lists the number of (and percentage) of residues with an average occupancy less than 0.9.

Mol	Chain	Analysed	<RSRZ>	#RSRZ>2	OWAB(Å ²)	Q<0.9
1	A	420/437 (96%)	-1.19	0 100 100	20, 44, 76, 97	0
1	B	420/437 (96%)	-1.18	0 100 100	17, 43, 77, 102	0
All	All	840/874 (96%)	-1.18	0 100 100	17, 43, 77, 102	0

There are no RSRZ outliers to report.

6.2 Non-standard residues in protein, DNA, RNA chains [i](#)

There are no non-standard protein/DNA/RNA residues in this entry.

6.3 Carbohydrates [i](#)

There are no oligosaccharides in this entry.

6.4 Ligands [i](#)

In the following table, the Atoms column lists the number of modelled atoms in the group and the number defined in the chemical component dictionary. The B-factors column lists the minimum, median, 95th percentile and maximum values of B factors of atoms in the group. The column labelled ‘Q< 0.9’ lists the number of atoms with occupancy less than 0.9.

Mol	Type	Chain	Res	Atoms	RSCC	RSR	B-factors(Å ²)	Q<0.9
3	BEN	A	1	9/9	0.99	0.04	5,6,16,16	0
3	BEN	B	1	9/9	0.99	0.05	5,6,16,16	0
2	PLP	A	500	15/16	1.00	0.03	26,34,40,42	0
2	PLP	B	500	15/16	1.00	0.03	31,34,39,42	0

6.5 Other polymers [i](#)

There are no such residues in this entry.