



# Full wwPDB X-ray Structure Validation Report ⓘ

Apr 25, 2026 – 02:49 PM EDT

PDB ID : 4BBJ / pdb\_00004bbj  
Title : Copper-transporting PIB-ATPase in complex with beryllium fluoride representing the E2P state  
Authors : Mattle, D.; Gourdon, P.; Nissen, P.  
Deposited on : 2012-09-25  
Resolution : 2.75 Å (reported)

This is a Full wwPDB X-ray Structure Validation Report for a publicly released PDB entry.

We welcome your comments at [validation@mail.wwpdb.org](mailto:validation@mail.wwpdb.org)

A user guide is available at

<https://www.wwpdb.org/validation/2017/XrayValidationReportHelp>

with specific help available everywhere you see the ⓘ symbol.

The types of validation reports are described at

<http://www.wwpdb.org/validation/2017/FAQs#types>.

---

The following versions of software and data (see [references ⓘ](#)) were used in the production of this report:

MolProbity : 4-5-2 with Phenix2.0  
Mogul : 2022.3.0, CSD as543be (2022)  
Xtrriage (Phenix) : 2.0  
EDS : 3.0  
Buster-report : wwPDB partial adaption of 1.1.7 (2018)  
Percentile statistics : 20250101.v01 (using entries in the PDB archive January 1st 2025)  
CCP4 : 9.0.010 (Gargrove)  
Density-Fitness : 1.0.12  
Ideal geometry (proteins) : Engh & Huber (2001)  
Ideal geometry (DNA, RNA) : Parkinson et al. (1996)  
Validation Pipeline (wwPDB-VP) : 2.49

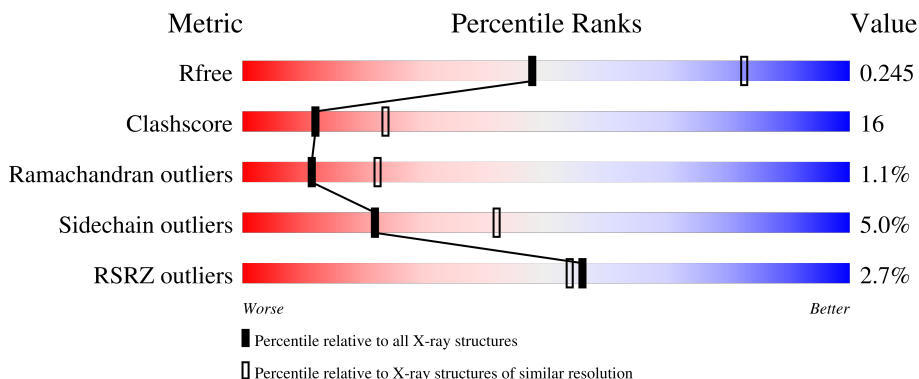
# 1 Overall quality at a glance i

The following experimental techniques were used to determine the structure:

*X-RAY DIFFRACTION*

The reported resolution of this entry is 2.75 Å.

Percentile scores (ranging between 0-100) for global validation metrics of the entry are shown in the following graphic. The table shows the number of entries on which the scores are based.



Metric	Whole archive (#Entries)	Similar resolution (#Entries, resolution range(Å))
$R_{free}$	180053	1009 (2.76-2.76)
Clashscore	190562	1044 (2.76-2.76)
Ramachandran outliers	187476	1024 (2.76-2.76)
Sidechain outliers	187428	1024 (2.76-2.76)
RSRZ outliers	180081	1009 (2.76-2.76)

The table below summarises the geometric issues observed across the polymeric chains and their fit to the electron density. The red, orange, yellow and green segments of the lower bar indicate the fraction of residues that contain outliers for  $\geq 3$ , 2, 1 and 0 types of geometric quality criteria respectively. A grey segment represents the fraction of residues that are not modelled. The numeric value for each fraction is indicated below the corresponding segment, with a dot representing fractions  $\leq 5\%$ . The upper red bar (where present) indicates the fraction of residues that have poor fit to the electron density. The numeric value is given above the bar.

Mol	Chain	Length	Quality of chain
1	A	736	

## 2 Entry composition [i](#)

There are 6 unique types of molecules in this entry. The entry contains 5096 atoms, of which 0 are hydrogens and 0 are deuteriums.

In the tables below, the ZeroOcc column contains the number of atoms modelled with zero occupancy, the AltConf column contains the number of residues with at least one atom in alternate conformation and the Trace column contains the number of residues modelled with at most 2 atoms.

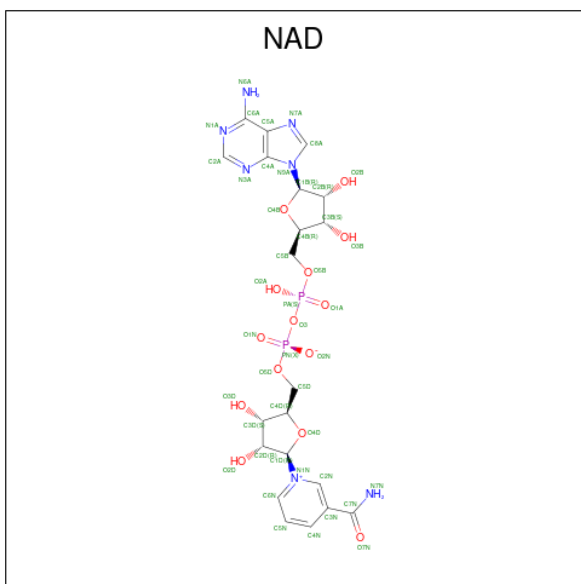
- Molecule 1 is a protein called COPPER EFFLUX ATPASE.

Mol	Chain	Residues	Atoms							ZeroOcc	AltConf	Trace
			Total	Be	C	F	N	O	S			
1	A	664	4945	1	3161	3	845	910	25	6	0	0

- Molecule 2 is MAGNESIUM ION (CCD ID: MG) (formula: Mg).

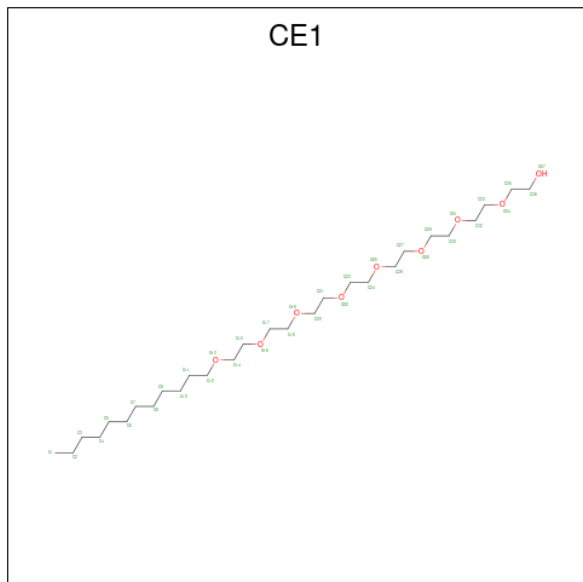
Mol	Chain	Residues	Atoms		ZeroOcc	AltConf
			Total	Mg		
2	A	1	1	1	0	0

- Molecule 3 is NICOTINAMIDE-ADENINE-DINUCLEOTIDE (CCD ID: NAD) (formula: C<sub>21</sub>H<sub>27</sub>N<sub>7</sub>O<sub>14</sub>P<sub>2</sub>).



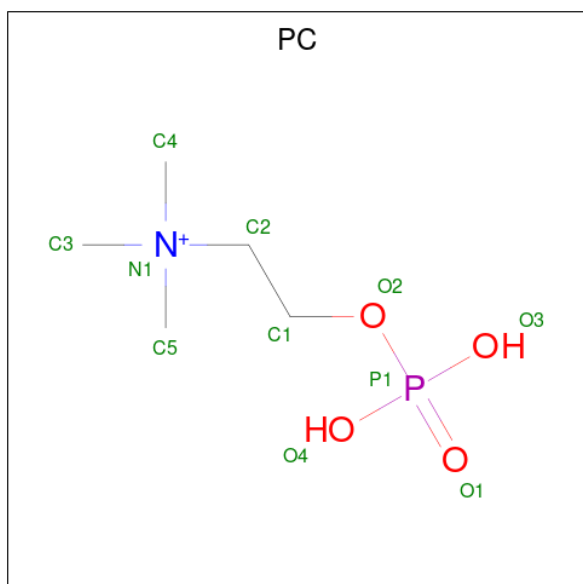
Mol	Chain	Residues	Atoms				ZeroOcc	AltConf	
			Total	C	N	O			P
3	A	1	44	21	7	14	2	14	0

- Molecule 4 is O-DODECANYL OCTAETHYLENE GLYCOL (CCD ID: CE1) (formula:  $C_{28}H_{58}O_9$ ).



Mol	Chain	Residues	Atoms			ZeroOcc	AltConf
			Total	C	O		
4	A	1	37	28	9	0	0

- Molecule 5 is PHOSPHOCHOLINE (CCD ID: PC) (formula:  $C_5H_{15}NO_4P$ ).



Mol	Chain	Residues	Atoms					ZeroOcc	AltConf
			Total	C	N	O	P		
5	A	1	11	5	1	4	1	0	0

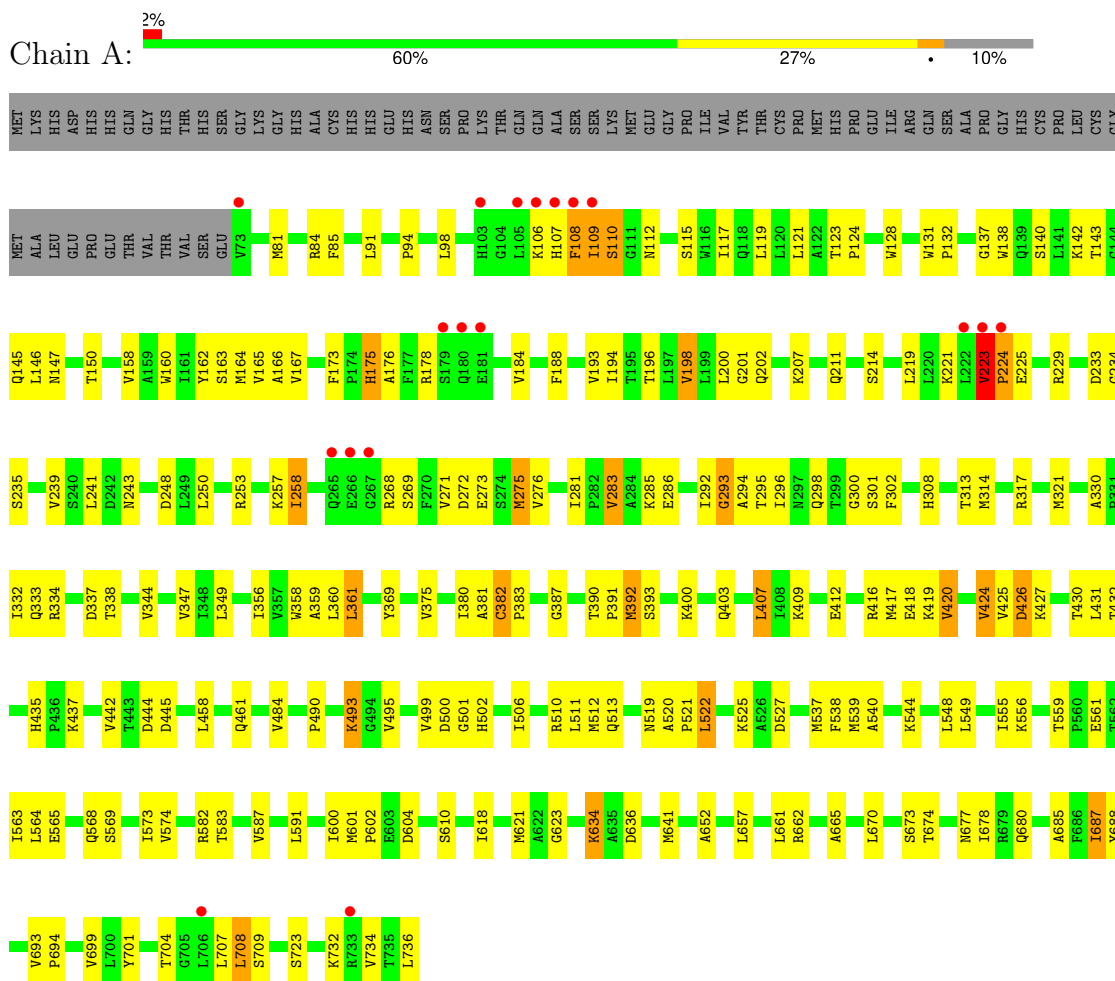
- Molecule 6 is water.

<b>Mol</b>	<b>Chain</b>	<b>Residues</b>	<b>Atoms</b>		<b>ZeroOcc</b>	<b>AltConf</b>
6	A	58	Total	O	0	0
			58	58		

### 3 Residue-property plots [i](#)

These plots are drawn for all protein, RNA, DNA and oligosaccharide chains in the entry. The first graphic for a chain summarises the proportions of the various outlier classes displayed in the second graphic. The second graphic shows the sequence view annotated by issues in geometry and electron density. Residues are color-coded according to the number of geometric quality criteria for which they contain at least one outlier: green = 0, yellow = 1, orange = 2 and red = 3 or more. A red dot above a residue indicates a poor fit to the electron density ( $RSRZ > 2$ ). Stretches of 2 or more consecutive residues without any outlier are shown as a green connector. Residues present in the sample, but not in the model, are shown in grey.

#### • Molecule 1: COPPER EFFLUX ATPASE



## 4 Data and refinement statistics

Property	Value	Source
Space group	C 1 2 1	Depositor
Cell constants a, b, c, $\alpha$ , $\beta$ , $\gamma$	242.01Å 71.37Å 72.43Å 90.00° 100.01° 90.00°	Depositor
Resolution (Å)	48.17 – 2.75 48.17 – 2.75	Depositor EDS
% Data completeness (in resolution range)	96.8 (48.17-2.75) 96.8 (48.17-2.75)	Depositor EDS
$R_{merge}$	0.12	Depositor
$R_{sym}$	(Not available)	Depositor
$\langle I/\sigma(I) \rangle$ <sup>1</sup>	2.33 (at 2.69Å)	Xtrriage
Refinement program	PHENIX (PHENIX.REFINE)	Depositor
R, $R_{free}$	0.199 , 0.247 0.194 , 0.245	Depositor DCC
$R_{free}$ test set	2390 reflections (7.33%)	wwPDB-VP
Wilson B-factor (Å <sup>2</sup> )	62.3	Xtrriage
Anisotropy	0.478	Xtrriage
Bulk solvent $k_{sol}$ (e/Å <sup>3</sup> ), $B_{sol}$ (Å <sup>2</sup> )	0.31 , 61.6	EDS
L-test for twinning <sup>2</sup>	$\langle  L  \rangle = 0.49$ , $\langle L^2 \rangle = 0.33$	Xtrriage
Estimated twinning fraction	No twinning to report.	Xtrriage
$F_o, F_c$ correlation	0.95	EDS
Total number of atoms	5096	wwPDB-VP
Average B, all atoms (Å <sup>2</sup> )	67.0	wwPDB-VP

Xtrriage's analysis on translational NCS is as follows: *The largest off-origin peak in the Patterson function is 6.24% of the height of the origin peak. No significant pseudotranslation is detected.*

<sup>1</sup>Intensities estimated from amplitudes.

<sup>2</sup>Theoretical values of  $\langle |L| \rangle$ ,  $\langle L^2 \rangle$  for acentric reflections are 0.5, 0.333 respectively for untwinned datasets, and 0.375, 0.2 for perfectly twinned datasets.

## 5 Model quality i

### 5.1 Standard geometry i

Bond lengths and bond angles in the following residue types are not validated in this section: CE1, NAD, BFD, MG, PC

The Z score for a bond length (or angle) is the number of standard deviations the observed value is removed from the expected value. A bond length (or angle) with  $|Z| > 5$  is considered an outlier worth inspection. RMSZ is the root-mean-square of all Z scores of the bond lengths (or angles).

Mol	Chain	Bond lengths		Bond angles	
		RMSZ	# Z  >5	RMSZ	# Z  >5
1	A	0.55	0/5015	0.96	21/6808 (0.3%)

Chiral center outliers are detected by calculating the chiral volume of a chiral center and verifying if the center is modelled as a planar moiety or with the opposite hand. A planarity outlier is detected by checking planarity of atoms in a peptide group, atoms in a mainchain group or atoms of a sidechain that are expected to be planar.

Mol	Chain	#Chirality outliers	#Planarity outliers
1	A	0	1

There are no bond length outliers.

All (21) bond angle outliers are listed below:

Mol	Chain	Res	Type	Atoms	Z	Observed( $^{\circ}$ )	Ideal( $^{\circ}$ )
1	A	258	ILE	CA-C-N	7.81	127.36	118.85
1	A	258	ILE	C-N-CA	7.81	127.36	118.85
1	A	435	HIS	CA-C-N	7.47	127.48	119.78
1	A	435	HIS	C-N-CA	7.47	127.48	119.78
1	A	198	VAL	N-CA-C	-7.40	105.56	112.96
1	A	330	ALA	CA-C-N	6.66	125.90	118.97
1	A	330	ALA	C-N-CA	6.66	125.90	118.97
1	A	382	CYS	CA-C-N	6.63	127.63	120.13
1	A	382	CYS	C-N-CA	6.63	127.63	120.13
1	A	234	GLY	N-CA-C	-6.26	107.32	115.59
1	A	493	LYS	N-CA-C	-6.17	105.66	113.43
1	A	293	GLY	N-CA-C	-5.98	103.99	112.37
1	A	106	LYS	N-CA-C	-5.79	106.06	113.01
1	A	281	ILE	N-CA-C	5.68	113.51	108.63
1	A	502	HIS	N-CA-C	5.62	119.13	110.42
1	A	175	HIS	N-CA-C	-5.54	103.18	110.43

*Continued on next page...*

Continued from previous page...

Mol	Chain	Res	Type	Atoms	Z	Observed(°)	Ideal(°)
1	A	569	SER	N-CA-C	-5.40	106.88	112.93
1	A	296	ILE	N-CA-C	5.33	115.53	107.80
1	A	709	SER	CA-C-N	5.23	126.38	119.84
1	A	709	SER	C-N-CA	5.23	126.38	119.84
1	A	223	VAL	N-CA-C	5.04	119.76	108.88

There are no chirality outliers.

All (1) planarity outliers are listed below:

Mol	Chain	Res	Type	Group
1	A	501	GLY	Peptide

## 5.2 Too-close contacts [i](#)

In the following table, the Non-H and H(model) columns list the number of non-hydrogen atoms and hydrogen atoms in the chain respectively. The H(added) column lists the number of hydrogen atoms added and optimized by MolProbity. The Clashes column lists the number of clashes within the asymmetric unit, whereas Symm-Clashes lists symmetry-related clashes.

Mol	Chain	Non-H	H(model)	H(added)	Clashes	Symm-Clashes
1	A	4945	0	5133	160	0
2	A	1	0	0	0	0
3	A	44	0	26	0	0
4	A	37	0	58	4	0
5	A	11	0	13	2	0
6	A	58	0	0	4	0
All	All	5096	0	5230	161	0

The all-atom clashscore is defined as the number of clashes found per 1000 atoms (including hydrogen atoms). The all-atom clashscore for this structure is 16.

All (161) close contacts within the same asymmetric unit are listed below, sorted by their clash magnitude.

Atom-1	Atom-2	Interatomic distance (Å)	Clash overlap (Å)
1:A:223:VAL:HG13	1:A:225:GLU:HG2	1.45	0.98
1:A:680:GLN:HE22	4:A:900:CE1:H352	1.31	0.94
1:A:143:THR:HG22	1:A:145:GLN:H	1.35	0.92
1:A:109:ILE:HG22	1:A:110:SER:H	1.36	0.89
1:A:271:VAL:HG12	1:A:295:THR:HG22	1.56	0.86

Continued on next page...

*Continued from previous page...*

Atom-1	Atom-2	Interatomic distance (Å)	Clash overlap (Å)
1:A:512:MET:HE1	1:A:540:ALA:HB2	1.61	0.83
1:A:506:ILE:HD13	1:A:539:MET:HG3	1.64	0.80
1:A:333:GLN:OE1	1:A:338:THR:HG22	1.83	0.79
1:A:207:LYS:O	1:A:211:GLN:HG2	1.85	0.77
1:A:484:VAL:HG12	1:A:499:VAL:HG22	1.68	0.75
1:A:109:ILE:CG2	1:A:110:SER:H	1.98	0.75
1:A:109:ILE:HG22	1:A:110:SER:N	2.01	0.75
1:A:91:LEU:O	1:A:94:PRO:HD2	1.88	0.74
1:A:271:VAL:HG12	1:A:295:THR:CG2	2.16	0.74
1:A:680:GLN:NE2	4:A:900:CE1:H352	2.03	0.73
1:A:680:GLN:HE21	4:A:900:CE1:H332	1.54	0.72
1:A:223:VAL:CG1	1:A:225:GLU:HG2	2.21	0.71
1:A:556:LYS:HB2	1:A:559:THR:HG23	1.72	0.70
1:A:160:TRP:O	1:A:164:MET:HG2	1.92	0.70
1:A:563:ILE:HD12	1:A:573:ILE:HD13	1.72	0.69
1:A:430:THR:HG21	1:A:623:GLY:HA2	1.74	0.69
1:A:273:GLU:HA	1:A:295:THR:HG23	1.73	0.69
1:A:510:ARG:O	1:A:513:GLN:HG2	1.91	0.69
1:A:140:SER:HG	1:A:150:THR:HG1	1.39	0.68
1:A:380:ILE:HD13	1:A:708:LEU:HD21	1.76	0.68
1:A:233:ASP:C	1:A:235:SER:H	2.01	0.67
1:A:293:GLY:O	6:A:2009:HOH:O	2.13	0.65
1:A:175:HIS:O	1:A:176:ALA:HB3	1.97	0.64
1:A:273:GLU:HG2	1:A:295:THR:HG21	1.78	0.64
1:A:229:ARG:NH1	1:A:248:ASP:OD2	2.31	0.63
1:A:272:ASP:O	1:A:295:THR:HG23	1.99	0.62
1:A:273:GLU:OE1	6:A:2014:HOH:O	2.15	0.62
1:A:418:GLU:HG3	1:A:419:LYS:HG2	1.82	0.62
1:A:225:GLU:HB2	1:A:241:LEU:HG	1.82	0.61
1:A:561:GLU:OE2	1:A:662:ARG:HD3	2.01	0.61
1:A:317:ARG:O	1:A:321:MET:HG3	2.01	0.61
1:A:110:SER:C	1:A:112:ASN:H	2.06	0.61
1:A:166:ALA:HB1	1:A:184:VAL:HB	1.84	0.60
1:A:493:LYS:HB3	1:A:511:LEU:HB2	1.84	0.60
1:A:110:SER:OG	1:A:112:ASN:HB3	2.02	0.59
1:A:138:TRP:HE1	1:A:142:LYS:HE3	1.69	0.58
1:A:271:VAL:CG1	1:A:295:THR:HG22	2.32	0.58
1:A:194:ILE:O	1:A:198:VAL:HG23	2.03	0.58
1:A:506:ILE:CD1	1:A:539:MET:HG3	2.34	0.57
1:A:138:TRP:NE1	1:A:142:LYS:HE3	2.19	0.57
1:A:225:GLU:O	1:A:225:GLU:HG3	2.05	0.57

*Continued on next page...*

*Continued from previous page...*

Atom-1	Atom-2	Interatomic distance (Å)	Clash overlap (Å)
1:A:147:ASN:HB2	1:A:337:ASP:OD2	2.06	0.56
1:A:618:ILE:HA	1:A:636:ASP:OD2	2.05	0.56
1:A:565:GLU:OE2	1:A:665:ALA:HB1	2.06	0.56
1:A:239:VAL:CG2	1:A:243:ASN:HB2	2.36	0.56
1:A:272:ASP:O	1:A:295:THR:CG2	2.54	0.55
1:A:110:SER:C	1:A:112:ASN:N	2.64	0.55
1:A:257:LYS:HG2	1:A:294:ALA:HB1	1.89	0.55
1:A:520:ALA:N	1:A:521:PRO:HD2	2.21	0.55
1:A:334:ARG:O	1:A:338:THR:HG23	2.08	0.54
1:A:601:MET:HB3	1:A:602:PRO:CD	2.36	0.54
1:A:121:LEU:O	1:A:124:PRO:HD2	2.08	0.54
1:A:233:ASP:C	1:A:235:SER:N	2.66	0.54
1:A:347:VAL:HG21	1:A:381:ALA:HB1	1.90	0.54
1:A:674:THR:O	1:A:678:ILE:HG13	2.08	0.54
1:A:163:SER:HB2	1:A:188:PHE:CE1	2.43	0.54
1:A:313:THR:O	1:A:317:ARG:HG3	2.08	0.54
1:A:360:LEU:HB2	1:A:361:LEU:HD13	1.89	0.54
1:A:119:LEU:HD23	1:A:119:LEU:C	2.33	0.53
1:A:162:TYR:HD2	1:A:375:VAL:HG11	1.74	0.53
1:A:556:LYS:HB2	1:A:559:THR:CG2	2.39	0.53
1:A:273:GLU:CG	1:A:295:THR:HG21	2.38	0.52
1:A:143:THR:HG22	1:A:145:GLN:N	2.16	0.52
1:A:175:HIS:O	1:A:176:ALA:CB	2.58	0.52
1:A:349:LEU:HD12	1:A:349:LEU:O	2.10	0.52
1:A:400:LYS:O	1:A:403:GLN:HG2	2.10	0.52
1:A:417:MET:O	1:A:420:VAL:HG13	2.09	0.51
1:A:431:LEU:O	1:A:559:THR:HG21	2.11	0.51
1:A:601:MET:HB3	1:A:602:PRO:HD2	1.93	0.51
1:A:137:GLY:O	1:A:140:SER:HB3	2.11	0.51
1:A:424:VAL:HG23	1:A:621:MET:SD	2.51	0.50
1:A:98:LEU:HD11	1:A:117:ILE:HG21	1.93	0.50
1:A:390:THR:HB	1:A:391:PRO:HD3	1.94	0.50
1:A:268:ARG:NH2	1:A:286:GLU:OE2	2.44	0.50
1:A:600:ILE:HB	1:A:604:ASP:HB2	1.93	0.50
1:A:223:VAL:HG12	1:A:223:VAL:O	2.11	0.50
1:A:400:LYS:HE3	1:A:734:VAL:O	2.12	0.50
1:A:587:VAL:HG12	1:A:591:LEU:HD12	1.94	0.49
1:A:680:GLN:NE2	4:A:900:CE1:H332	2.25	0.49
1:A:283:VAL:HG12	1:A:285:LYS:HE2	1.94	0.49
1:A:426:bfd:O	1:A:430:THR:OG1	2.30	0.49
1:A:425:VAL:HG21	1:A:431:LEU:HD21	1.93	0.48

*Continued on next page...*

*Continued from previous page...*

Atom-1	Atom-2	Interatomic distance (Å)	Clash overlap (Å)
1:A:292:ILE:HG22	1:A:293:GLY:O	2.13	0.48
1:A:519:ASN:OD1	1:A:521:PRO:HG2	2.13	0.48
1:A:427:LYS:HD2	1:A:587:VAL:HG21	1.95	0.48
1:A:165:VAL:HG12	1:A:173:PHE:HE1	1.77	0.48
1:A:490:PRO:HB2	1:A:493:LYS:HD2	1.95	0.48
1:A:458:LEU:HG	1:A:495:VAL:CG1	2.43	0.48
1:A:221:LYS:HD3	1:A:224:PRO:HG3	1.96	0.48
1:A:444:ASP:O	1:A:445:ASP:C	2.56	0.48
1:A:412:GLU:O	1:A:416:ARG:HG3	2.14	0.47
1:A:145:GLN:HE21	1:A:333:GLN:NE2	2.12	0.47
1:A:158:VAL:CG1	1:A:375:VAL:HG13	2.44	0.47
1:A:301:SER:O	1:A:302:PHE:HB3	2.15	0.47
1:A:407:LEU:HD23	1:A:407:LEU:N	2.30	0.47
1:A:162:TYR:CD2	1:A:375:VAL:HG11	2.50	0.47
5:A:950:PC:O4	5:A:950:PC:H43	2.14	0.47
1:A:382:CYS:HA	1:A:383:PRO:HD3	1.63	0.47
1:A:201:GLY:HA3	1:A:387:GLY:O	2.14	0.47
1:A:537:MET:HE3	1:A:549:LEU:HB2	1.97	0.47
1:A:81:MET:HE3	1:A:202:GLN:HG3	1.96	0.46
1:A:165:VAL:HG12	1:A:173:PHE:CE1	2.50	0.46
1:A:512:MET:HG3	1:A:538:PHE:CB	2.45	0.46
1:A:424:VAL:HA	1:A:574:VAL:O	2.16	0.46
1:A:670:LEU:HD13	1:A:736:LEU:HD11	1.98	0.46
1:A:499:VAL:O	1:A:500:ASP:C	2.57	0.46
1:A:537:MET:HE3	1:A:537:MET:HB2	1.89	0.45
1:A:84:ARG:NH1	1:A:128:TRP:O	2.50	0.45
1:A:641:MET:N	1:A:641:MET:HE2	2.30	0.45
1:A:701:TYR:O	1:A:704:THR:O	2.34	0.45
1:A:383:PRO:HB3	1:A:685:ALA:O	2.17	0.45
1:A:85:PHE:CE2	1:A:200:LEU:HB2	2.51	0.45
1:A:582:ARG:HE	1:A:582:ARG:HB2	1.56	0.45
1:A:393:SER:OG	1:A:677:ASN:OD1	2.35	0.45
1:A:173:PHE:O	1:A:178:ARG:NH1	2.50	0.44
1:A:687:ILE:HG23	1:A:688:TYR:N	2.31	0.44
1:A:356:ILE:O	1:A:359:ALA:HB3	2.17	0.44
1:A:432:THR:HG22	1:A:555:ILE:HA	1.99	0.44
1:A:121:LEU:C	1:A:124:PRO:HD2	2.42	0.44
1:A:131:TRP:N	1:A:132:PRO:HD2	2.33	0.44
1:A:358:TRP:CE3	1:A:369:TYR:HB3	2.53	0.44
1:A:419:LYS:HA	1:A:419:LYS:HE2	1.99	0.44
1:A:392:MET:HG2	6:A:2025:HOH:O	2.17	0.44

*Continued on next page...*

*Continued from previous page...*

Atom-1	Atom-2	Interatomic distance (Å)	Clash overlap (Å)
1:A:409:LYS:HD3	1:A:652:ALA:O	2.17	0.44
1:A:271:VAL:CG1	1:A:295:THR:CG2	2.92	0.44
1:A:442:VAL:HG11	1:A:525:LYS:HD2	1.99	0.44
1:A:540:ALA:HA	1:A:544:LYS:O	2.18	0.44
1:A:131:TRP:CD1	5:A:950:PC:O4	2.71	0.43
1:A:693:VAL:N	1:A:694:PRO:CD	2.81	0.43
1:A:85:PHE:CE2	1:A:200:LEU:HD22	2.54	0.43
1:A:229:ARG:HA	1:A:250:LEU:HD23	2.01	0.43
1:A:400:LYS:HE2	1:A:732:LYS:O	2.19	0.43
1:A:108:PHE:C	1:A:109:ILE:O	2.61	0.43
1:A:583:THR:O	1:A:587:VAL:HG23	2.18	0.43
1:A:688:TYR:HB2	6:A:2057:HOH:O	2.18	0.43
1:A:140:SER:OG	1:A:146:LEU:HA	2.19	0.43
1:A:115:SER:HB3	1:A:167:VAL:HG22	1.99	0.43
1:A:123:THR:N	1:A:124:PRO:CD	2.81	0.43
1:A:268:ARG:HB3	1:A:286:GLU:HG3	1.99	0.42
1:A:219:LEU:HD21	1:A:657:LEU:HD12	2.00	0.42
1:A:424:VAL:CG2	1:A:621:MET:SD	3.07	0.42
1:A:522:LEU:HD13	1:A:548:LEU:HD21	2.02	0.42
1:A:420:VAL:HA	1:A:618:ILE:CG2	2.50	0.42
1:A:107:HIS:C	1:A:109:ILE:H	2.26	0.41
1:A:163:SER:CB	1:A:188:PHE:CE1	3.03	0.41
1:A:233:ASP:HB2	1:A:235:SER:HB3	2.01	0.41
1:A:525:LYS:HB2	1:A:525:LYS:HE3	1.66	0.41
1:A:107:HIS:O	1:A:109:ILE:N	2.44	0.41
1:A:610:SER:OG	1:A:634:LYS:HD3	2.21	0.41
1:A:269:SER:HB2	1:A:300:GLY:HA3	2.02	0.41
1:A:308:HIS:O	1:A:313:THR:HG22	2.20	0.41
1:A:519:ASN:C	1:A:521:PRO:HD2	2.46	0.41
1:A:91:LEU:C	1:A:94:PRO:HD2	2.45	0.40
1:A:131:TRP:HB3	1:A:132:PRO:HD3	2.04	0.40
1:A:275:MET:HG2	1:A:276:VAL:HG23	2.02	0.40
1:A:564:LEU:O	1:A:568:GLN:HG2	2.22	0.40

There are no symmetry-related clashes.

## 5.3 Torsion angles [i](#)

### 5.3.1 Protein backbone [i](#)

In the following table, the Percentiles column shows the percent Ramachandran outliers of the chain as a percentile score with respect to all X-ray entries followed by that with respect to entries of similar resolution.

The Analysed column shows the number of residues for which the backbone conformation was analysed, and the total number of residues.

Mol	Chain	Analysed	Favoured	Allowed	Outliers	Percentiles
1	A	661/736 (90%)	624 (94%)	30 (4%)	7 (1%)	11 22

All (7) Ramachandran outliers are listed below:

Mol	Chain	Res	Type
1	A	109	ILE
1	A	108	PHE
1	A	223	VAL
1	A	298	GLN
1	A	110	SER
1	A	224	PRO
1	A	332	ILE

### 5.3.2 Protein sidechains [i](#)

In the following table, the Percentiles column shows the percent sidechain outliers of the chain as a percentile score with respect to all X-ray entries followed by that with respect to entries of similar resolution.

The Analysed column shows the number of residues for which the sidechain conformation was analysed, and the total number of residues.

Mol	Chain	Analysed	Rotameric	Outliers	Percentiles
1	A	523/585 (89%)	497 (95%)	26 (5%)	22 42

All (26) residues with a non-rotameric sidechain are listed below:

Mol	Chain	Res	Type
1	A	193	VAL
1	A	196	THR
1	A	214	SER
1	A	253	ARG

*Continued on next page...*

*Continued from previous page...*

Mol	Chain	Res	Type
1	A	258	ILE
1	A	275	MET
1	A	283	VAL
1	A	314	MET
1	A	344	VAL
1	A	361	LEU
1	A	392	MET
1	A	407	LEU
1	A	420	VAL
1	A	424	VAL
1	A	437	LYS
1	A	461	GLN
1	A	522	LEU
1	A	527	ASP
1	A	634	LYS
1	A	661	LEU
1	A	673	SER
1	A	687	ILE
1	A	699	VAL
1	A	707	LEU
1	A	708	LEU
1	A	723	SER

Sometimes sidechains can be flipped to improve hydrogen bonding and reduce clashes. All (8) such sidechains are listed below:

Mol	Chain	Res	Type
1	A	145	GLN
1	A	211	GLN
1	A	297	ASN
1	A	364	GLN
1	A	435	HIS
1	A	658	HIS
1	A	680	GLN
1	A	727	ASN

### 5.3.3 RNA [i](#)

There are no RNA molecules in this entry.

## 5.4 Non-standard residues in protein, DNA, RNA chains [i](#)

1 non-standard protein/DNA/RNA residue is modelled in this entry.

In the following table, the Counts columns list the number of bonds (or angles) for which Mogul statistics could be retrieved, the number of bonds (or angles) that are observed in the model and the number of bonds (or angles) that are defined in the Chemical Component Dictionary. The Link column lists molecule types, if any, to which the group is linked. The Z score for a bond length (or angle) is the number of standard deviations the observed value is removed from the expected value. A bond length (or angle) with  $|Z| > 2$  is considered an outlier worth inspection. RMSZ is the root-mean-square of all Z scores of the bond lengths (or angles).

Mol	Type	Chain	Res	Link	Bond lengths			Bond angles		
					Counts	RMSZ	# Z  > 2	Counts	RMSZ	# Z  > 2
1	BFD	A	426	2,1	8,11,12	4.37	3 (37%)	2,15,17	2.09	1 (50%)

In the following table, the Chirals column lists the number of chiral outliers, the number of chiral centers analysed, the number of these observed in the model and the number defined in the Chemical Component Dictionary. Similar counts are reported in the Torsion and Rings columns. '-' means no outliers of that kind were identified.

Mol	Type	Chain	Res	Link	Chirals	Torsions	Rings
1	BFD	A	426	2,1	-	0/5/11/13	-

All (3) bond length outliers are listed below:

Mol	Chain	Res	Type	Atoms	Z	Observed(Å)	Ideal(Å)
1	A	426	BFD	F2-BE	-7.21	1.37	1.54
1	A	426	BFD	F3-BE	-7.14	1.37	1.54
1	A	426	BFD	F1-BE	-6.63	1.39	1.54

All (1) bond angle outliers are listed below:

Mol	Chain	Res	Type	Atoms	Z	Observed(°)	Ideal(°)
1	A	426	BFD	CA-CB-CG	2.22	117.54	112.78

There are no chirality outliers.

There are no torsion outliers.

There are no ring outliers.

1 monomer is involved in 1 short contact:

Mol	Chain	Res	Type	Clashes	Symm-Clashes
1	A	426	BFD	1	0

## 5.5 Carbohydrates [i](#)

There are no oligosaccharides in this entry.

## 5.6 Ligand geometry [i](#)

Of 4 ligands modelled in this entry, 1 is monoatomic - leaving 3 for Mogul analysis.

In the following table, the Counts columns list the number of bonds (or angles) for which Mogul statistics could be retrieved, the number of bonds (or angles) that are observed in the model and the number of bonds (or angles) that are defined in the Chemical Component Dictionary. The Link column lists molecule types, if any, to which the group is linked. The Z score for a bond length (or angle) is the number of standard deviations the observed value is removed from the expected value. A bond length (or angle) with  $|Z| > 2$  is considered an outlier worth inspection. RMSZ is the root-mean-square of all Z scores of the bond lengths (or angles).

Mol	Type	Chain	Res	Link	Bond lengths			Bond angles		
					Counts	RMSZ	# Z  > 2	Counts	RMSZ	# Z  > 2
5	PC	A	950	-	10,10,10	1.03	0	15,15,15	0.67	0
4	CE1	A	900	-	36,36,36	0.45	0	35,35,35	1.00	3 (8%)
3	NAD	A	800	-	46,48,48	1.94	12 (26%)	64,73,73	1.61	9 (14%)

In the following table, the Chirals column lists the number of chiral outliers, the number of chiral centers analysed, the number of these observed in the model and the number defined in the Chemical Component Dictionary. Similar counts are reported in the Torsion and Rings columns. '-' means no outliers of that kind were identified.

Mol	Type	Chain	Res	Link	Chirals	Torsions	Rings
5	PC	A	950	-	-	4/8/8/8	-
4	CE1	A	900	-	-	17/34/34/34	-
3	NAD	A	800	-	-	15/30/62/62	0/5/5/5

All (12) bond length outliers are listed below:

Mol	Chain	Res	Type	Atoms	Z	Observed(Å)	Ideal(Å)
3	A	800	NAD	C2B-C3B	-5.01	1.39	1.53
3	A	800	NAD	C7N-N7N	4.79	1.41	1.33
3	A	800	NAD	C2D-C3D	-4.32	1.41	1.53
3	A	800	NAD	O7N-C7N	-4.23	1.16	1.24
3	A	800	NAD	O4D-C1D	3.63	1.45	1.40
3	A	800	NAD	C6A-N6A	3.44	1.43	1.34
3	A	800	NAD	O4D-C4D	-3.01	1.38	1.45
3	A	800	NAD	PA-O3	-2.57	1.56	1.59

*Continued on next page...*

*Continued from previous page...*

Mol	Chain	Res	Type	Atoms	Z	Observed(Å)	Ideal(Å)
3	A	800	NAD	C1B-N9A	2.24	1.52	1.46
3	A	800	NAD	O4B-C4B	-2.15	1.40	1.45
3	A	800	NAD	C8A-N7A	2.13	1.35	1.31
3	A	800	NAD	C5A-N7A	-2.00	1.35	1.39

All (12) bond angle outliers are listed below:

Mol	Chain	Res	Type	Atoms	Z	Observed(°)	Ideal(°)
3	A	800	NAD	N3A-C2A-N1A	-5.86	119.72	128.58
3	A	800	NAD	C5A-C4A-N3A	-4.74	120.19	126.72
3	A	800	NAD	C2A-N3A-C4A	3.82	121.15	111.83
3	A	800	NAD	O5B-C5B-C4B	3.38	120.48	108.99
3	A	800	NAD	N9A-C8A-N7A	-3.20	109.39	113.94
3	A	800	NAD	N3A-C4A-N9A	2.94	132.16	127.17
3	A	800	NAD	C5A-N7A-C8A	2.65	107.62	103.45
3	A	800	NAD	C4A-C5A-N7A	-2.57	107.65	110.58
4	A	900	CE1	C29-O28-C27	2.19	122.86	113.26
3	A	800	NAD	C4D-O4D-C1D	-2.07	108.03	109.92
4	A	900	CE1	C32-O31-C30	2.05	122.23	113.26
4	A	900	CE1	C14-O13-C12	2.01	122.04	113.26

There are no chirality outliers.

All (36) torsion outliers are listed below:

Mol	Chain	Res	Type	Atoms
3	A	800	NAD	PN-O3-PA-O5B
3	A	800	NAD	C5D-O5D-PN-O3
3	A	800	NAD	C5D-O5D-PN-O1N
3	A	800	NAD	C5D-O5D-PN-O2N
3	A	800	NAD	O4D-C4D-C5D-O5D
3	A	800	NAD	C3D-C4D-C5D-O5D
3	A	800	NAD	O4D-C1D-N1N-C2N
3	A	800	NAD	C2N-C3N-C7N-O7N
3	A	800	NAD	C2N-C3N-C7N-N7N
5	A	950	PC	O2-C1-C2-N1
3	A	800	NAD	C4N-C3N-C7N-O7N
3	A	800	NAD	C4N-C3N-C7N-N7N
4	A	900	CE1	O28-C29-C30-O31
4	A	900	CE1	O31-C32-C33-O34
5	A	950	PC	C1-C2-N1-C3
5	A	950	PC	C1-C2-N1-C4
4	A	900	CE1	O16-C17-C18-O19

*Continued on next page...*

*Continued from previous page...*

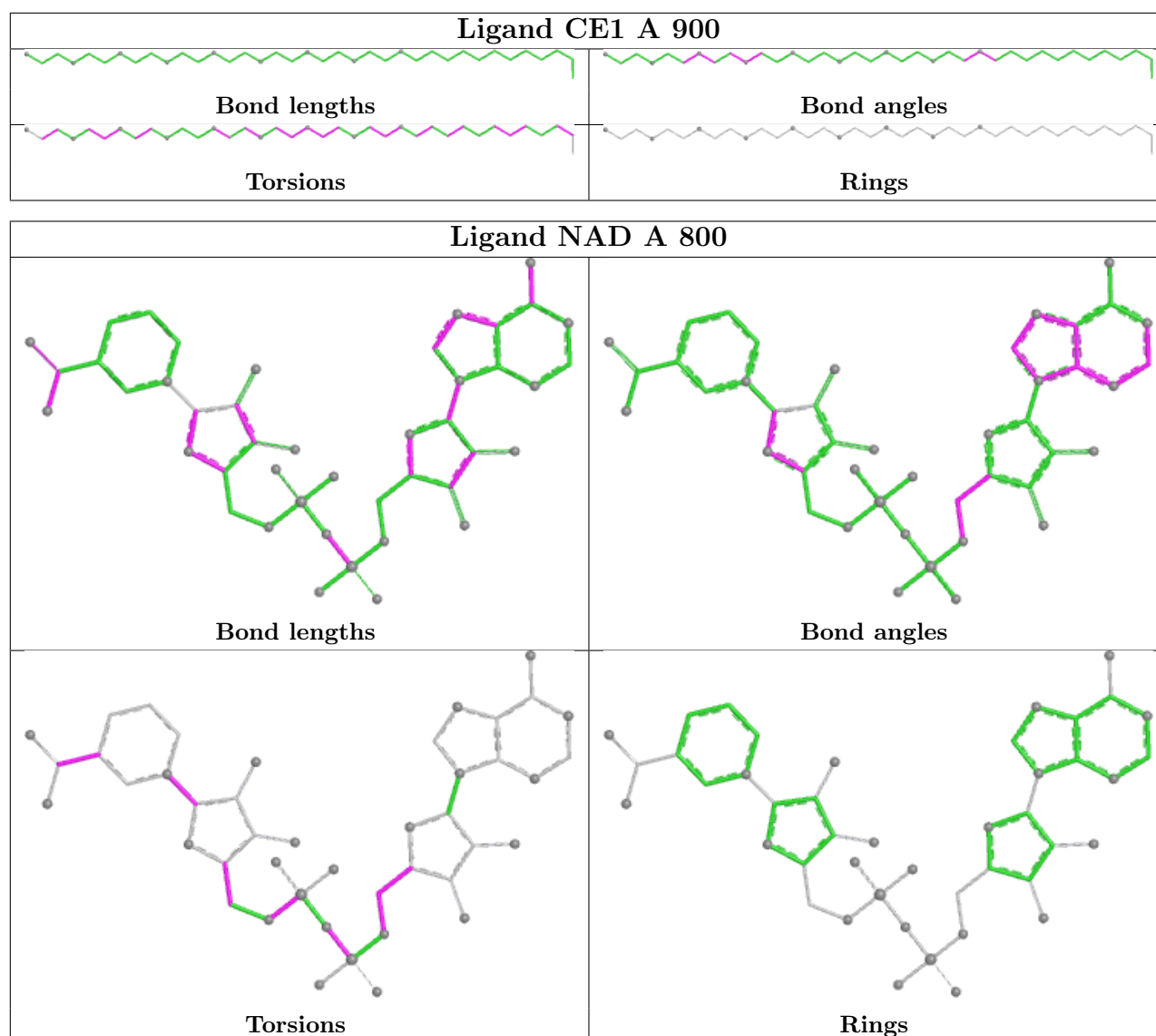
Mol	Chain	Res	Type	Atoms
4	A	900	CE1	O13-C14-C15-O16
5	A	950	PC	C1-C2-N1-C5
4	A	900	CE1	C33-C32-O31-C30
3	A	800	NAD	O4B-C4B-C5B-O5B
3	A	800	NAD	C3B-C4B-C5B-O5B
4	A	900	CE1	C4-C5-C6-C7
4	A	900	CE1	C10-C11-C12-O13
4	A	900	CE1	O34-C35-C36-O37
4	A	900	CE1	C23-C24-O25-C26
4	A	900	CE1	C5-C6-C7-C8
4	A	900	CE1	C17-C18-O19-C20
4	A	900	CE1	C15-C14-O13-C12
4	A	900	CE1	C24-C23-O22-C21
4	A	900	CE1	C11-C10-C9-C8
4	A	900	CE1	C1-C2-C3-C4
3	A	800	NAD	O4D-C1D-N1N-C6N
3	A	800	NAD	C4B-C5B-O5B-PA
4	A	900	CE1	C21-C20-O19-C18
4	A	900	CE1	O19-C20-C21-O22

There are no ring outliers.

2 monomers are involved in 6 short contacts:

Mol	Chain	Res	Type	Clashes	Symm-Clashes
5	A	950	PC	2	0
4	A	900	CE1	4	0

The following is a two-dimensional graphical depiction of Mogul quality analysis of bond lengths, bond angles, torsion angles, and ring geometry for all instances of the Ligand of Interest. In addition, ligands with molecular weight > 250 and outliers as shown on the validation Tables will also be included. For torsion angles, if less than 5% of the Mogul distribution of torsion angles is within 10 degrees of the torsion angle in question, then that torsion angle is considered an outlier. Any bond that is central to one or more torsion angles identified as an outlier by Mogul will be highlighted in the graph. For rings, the root-mean-square deviation (RMSD) between the ring in question and similar rings identified by Mogul is calculated over all ring torsion angles. If the average RMSD is greater than 60 degrees and the minimal RMSD between the ring in question and any Mogul-identified rings is also greater than 60 degrees, then that ring is considered an outlier. The outliers are highlighted in purple. The color gray indicates Mogul did not find sufficient equivalents in the CSD to analyse the geometry.



## 5.7 Other polymers [\(i\)](#)

There are no such residues in this entry.

## 5.8 Polymer linkage issues [\(i\)](#)

There are no chain breaks in this entry.

## 6 Fit of model and data [i](#)

### 6.1 Protein, DNA and RNA chains [i](#)

In the following table, the column labelled ‘#RSRZ > 2’ contains the number (and percentage) of RSRZ outliers, followed by percent RSRZ outliers for the chain as percentile scores relative to all X-ray entries and entries of similar resolution. The OWAB column contains the minimum, median, 95<sup>th</sup> percentile and maximum values of the occupancy-weighted average B-factor per residue. The column labelled ‘Q < 0.9’ lists the number of (and percentage) of residues with an average occupancy less than 0.9.

Mol	Chain	Analysed	<RSRZ>	#RSRZ>2	OWAB(Å <sup>2</sup> )	Q<0.9
1	A	663/736 (90%)	-0.21	18 (2%) 56 54	36, 58, 105, 173	1 (0%)

All (18) RSRZ outliers are listed below:

Mol	Chain	Res	Type	RSRZ
1	A	222	LEU	5.8
1	A	73	VAL	5.3
1	A	109	ILE	5.1
1	A	181	GLU	4.6
1	A	224	PRO	3.5
1	A	267	GLY	3.4
1	A	265	GLN	3.3
1	A	223	VAL	3.1
1	A	108	PHE	3.1
1	A	106	LYS	2.9
1	A	180	GLN	2.7
1	A	266	GLU	2.6
1	A	107	HIS	2.3
1	A	105	LEU	2.2
1	A	103	HIS	2.2
1	A	733	ARG	2.1
1	A	706	LEU	2.1
1	A	179	SER	2.0

### 6.2 Non-standard residues in protein, DNA, RNA chains [i](#)

In the following table, the Atoms column lists the number of modelled atoms in the group and the number defined in the chemical component dictionary. The B-factors column lists the minimum, median, 95<sup>th</sup> percentile and maximum values of B factors of atoms in the group. The column labelled ‘Q < 0.9’ lists the number of atoms with occupancy less than 0.9.

Mol	Type	Chain	Res	Atoms	RSCC	RSR	B-factors( $\text{\AA}^2$ )	Q<0.9
1	BFD	A	426	12/13	0.98	0.05	40,52,63,69	0

### 6.3 Carbohydrates [i](#)

There are no oligosaccharides in this entry.

### 6.4 Ligands [i](#)

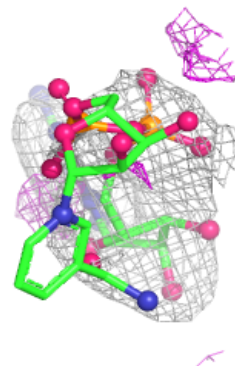
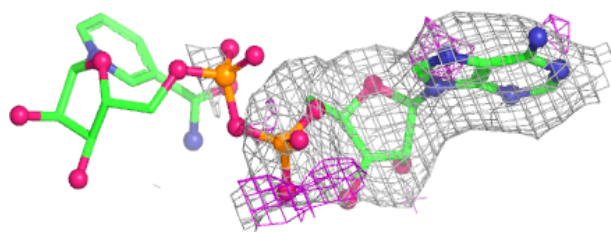
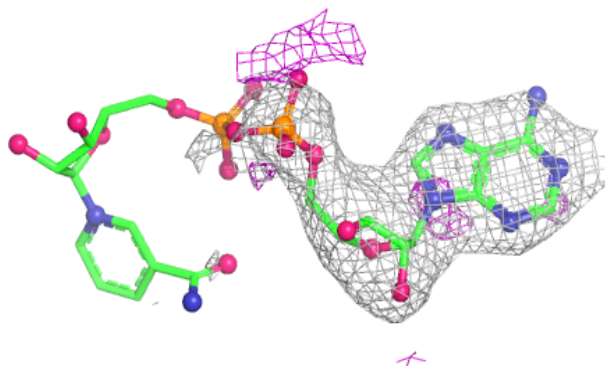
In the following table, the Atoms column lists the number of modelled atoms in the group and the number defined in the chemical component dictionary. The B-factors column lists the minimum, median, 95<sup>th</sup> percentile and maximum values of B factors of atoms in the group. The column labelled 'Q< 0.9' lists the number of atoms with occupancy less than 0.9.

Mol	Type	Chain	Res	Atoms	RSCC	RSR	B-factors( $\text{\AA}^2$ )	Q<0.9
5	PC	A	950	11/11	0.39	0.31	116,128,221,221	0
3	NAD	A	800	44/44	0.86	0.16	55,174,187,386	14
4	CE1	A	900	37/37	0.91	0.17	42,66,108,111	0
2	MG	A	750	1/1	1.00	0.02	54,54,54,54	0

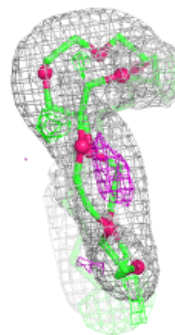
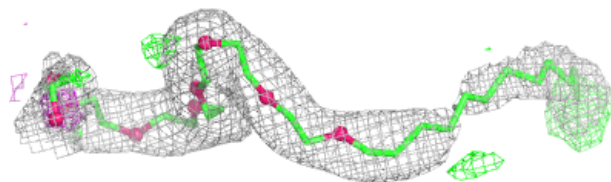
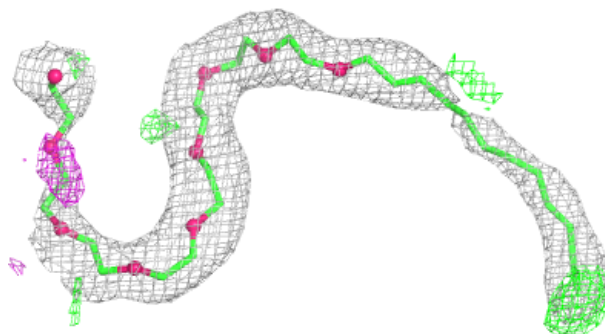
The following is a graphical depiction of the model fit to experimental electron density of all instances of the Ligand of Interest. In addition, ligands with molecular weight > 250 and outliers as shown on the geometry validation Tables will also be included. Each fit is shown from different orientation to approximate a three-dimensional view.

**Electron density around NAD A 800:**

$2mF_o-DF_c$  (at 0.7 rmsd) in gray  
 $mF_o-DF_c$  (at 3 rmsd) in purple (negative)  
and green (positive)

**Electron density around CE1 A 900:**

$2mF_o-DF_c$  (at 0.7 rmsd) in gray  
 $mF_o-DF_c$  (at 3 rmsd) in purple (negative)  
and green (positive)



## 6.5 Other polymers [i](#)

There are no such residues in this entry.