



# Full wwPDB X-ray Structure Validation Report ⓘ

Mar 9, 2026 – 05:44 AM UTC

PDB ID : 6BB3 / pdb\_00006bb3  
Title : Lactate Dehydrogenase in complex with inhibitor 3-((2-chlorophenyl)thio)-6-(6-((4-fluorophenyl)amino)pyridin-2-yl)-4-hydroxy-6-(thiophen-3-yl)-5,6-dihydro-2H-pyran-2-one  
Authors : Chen, Z.; Eigenbrot, C.  
Deposited on : 2017-10-16  
Resolution : 2.40 Å(reported)

This is a Full wwPDB X-ray Structure Validation Report for a publicly released PDB entry.

We welcome your comments at [validation@mail.wwpdb.org](mailto:validation@mail.wwpdb.org)

A user guide is available at

<https://www.wwpdb.org/validation/2017/XrayValidationReportHelp>

with specific help available everywhere you see the ⓘ symbol.

The types of validation reports are described at

<http://www.wwpdb.org/validation/2017/FAQs#types>.

---

The following versions of software and data (see [references ⓘ](#)) were used in the production of this report:

MolProbity : 4-5-2 with Phenix2.0  
Mogul : 2022.3.0, CSD as543be (2022)  
Xtriage (Phenix) : 2.0  
EDS : 3.0  
Buster-report : wwPDB partial adaption of 1.1.7 (2018)  
Percentile statistics : 20250101.v01 (using entries in the PDB archive January 1st 2025)  
CCP4 : 9.0.010 (Gargrove)  
Density-Fitness : 1.0.12  
Ideal geometry (proteins) : Engh & Huber (2001)  
Ideal geometry (DNA, RNA) : Parkinson et al. (1996)  
Validation Pipeline (wwPDB-VP) : 2.49

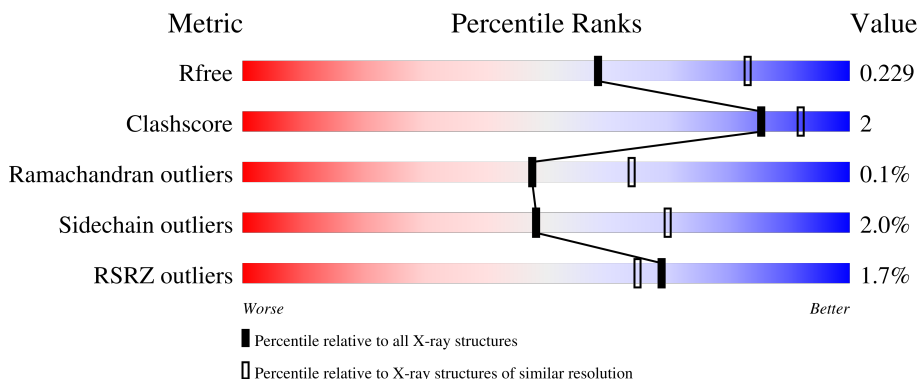
# 1 Overall quality at a glance

The following experimental techniques were used to determine the structure:

*X-RAY DIFFRACTION*

The reported resolution of this entry is 2.40 Å.

Percentile scores (ranging between 0-100) for global validation metrics of the entry are shown in the following graphic. The table shows the number of entries on which the scores are based.



Metric	Whole archive (#Entries)	Similar resolution (#Entries, resolution range(Å))
$R_{free}$	180053	4912 (2.40-2.40)
Clashscore	190562	5391 (2.40-2.40)
Ramachandran outliers	187476	5320 (2.40-2.40)
Sidechain outliers	187428	5321 (2.40-2.40)
RSRZ outliers	180081	4916 (2.40-2.40)

The table below summarises the geometric issues observed across the polymeric chains and their fit to the electron density. The red, orange, yellow and green segments of the lower bar indicate the fraction of residues that contain outliers for  $\geq 3$ , 2, 1 and 0 types of geometric quality criteria respectively. A grey segment represents the fraction of residues that are not modelled. The numeric value for each fraction is indicated below the corresponding segment, with a dot representing fractions  $\leq 5\%$ . The upper red bar (where present) indicates the fraction of residues that have poor fit to the electron density. The numeric value is given above the bar.

Mol	Chain	Length	Quality of chain
1	A	331	
1	B	331	
1	C	331	
1	D	331	

## 2 Entry composition [i](#)

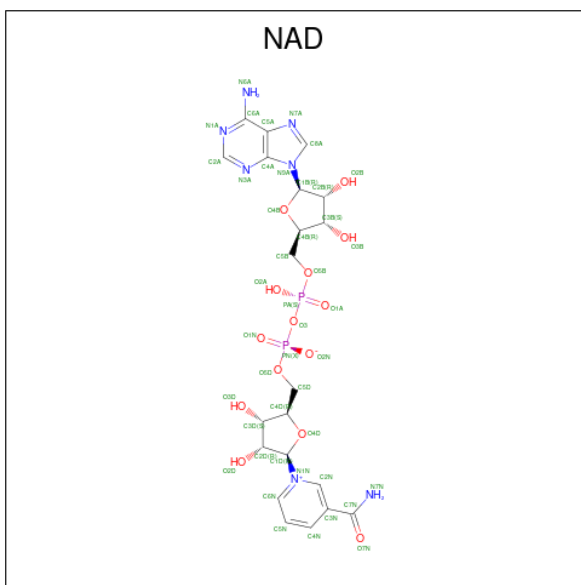
There are 5 unique types of molecules in this entry. The entry contains 10570 atoms, of which 0 are hydrogens and 0 are deuteriums.

In the tables below, the ZeroOcc column contains the number of atoms modelled with zero occupancy, the AltConf column contains the number of residues with at least one atom in alternate conformation and the Trace column contains the number of residues modelled with at most 2 atoms.

- Molecule 1 is a protein called L-lactate dehydrogenase A chain.

Mol	Chain	Residues	Atoms					ZeroOcc	AltConf	Trace
			Total	C	N	O	S			
1	A	331	Total 2568	C 1639	N 439	O 477	S 13	0	0	0
1	B	322	Total 2493	C 1598	N 424	O 458	S 13	4	0	0
1	C	324	Total 2512	C 1608	N 427	O 464	S 13	8	0	0
1	D	324	Total 2515	C 1611	N 427	O 464	S 13	5	1	0

- Molecule 2 is NICOTINAMIDE-ADENINE-DINUCLEOTIDE (CCD ID: NAD) (formula:  $C_{21}H_{27}N_7O_{14}P_2$ ).



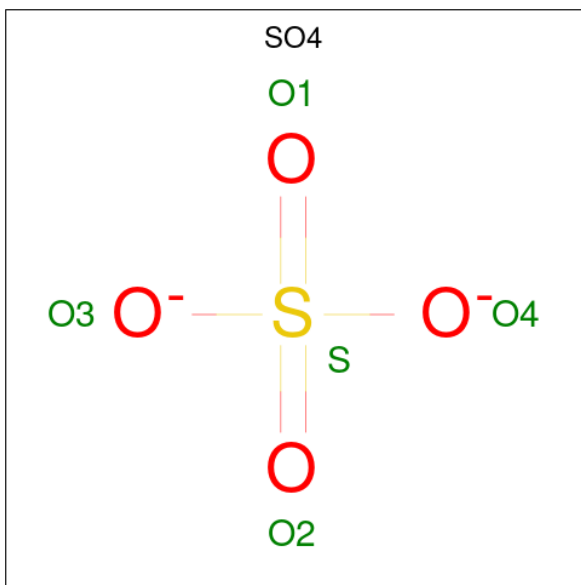
Mol	Chain	Residues	Atoms				ZeroOcc	AltConf	
			Total	C	N	O			P
2	A	1	Total 44	C 21	N 7	O 14	P 2	0	0
2	B	1	Total 44	C 21	N 7	O 14	P 2	0	0

*Continued on next page...*

Continued from previous page...

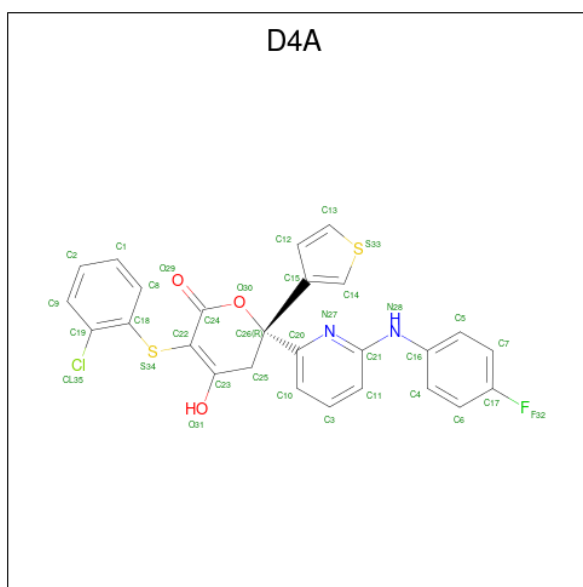
Mol	Chain	Residues	Atoms					ZeroOcc	AltConf
2	C	1	Total	C	N	O	P	0	0
			44	21	7	14	2		
2	D	1	Total	C	N	O	P	0	0
			44	21	7	14	2		

- Molecule 3 is SULFATE ION (CCD ID: SO4) (formula: O<sub>4</sub>S).



Mol	Chain	Residues	Atoms			ZeroOcc	AltConf
3	A	1	Total	O	S	0	0
			5	4	1		
3	A	1	Total	O	S	0	0
			5	4	1		
3	B	1	Total	O	S	0	0
			5	4	1		
3	B	1	Total	O	S	0	0
			5	4	1		
3	C	1	Total	O	S	0	0
			5	4	1		
3	C	1	Total	O	S	0	0
			5	4	1		
3	D	1	Total	O	S	0	0
			5	4	1		

- Molecule 4 is (6R)-3-[(2-chlorophenyl)sulfanyl]-6-{6-[(4-fluorophenyl)amino]pyridin-2-yl}-4-hydroxy-6-(thiophen-3-yl)-5,6-dihydro-2H-pyran-2-one (CCD ID: D4A) (formula: C<sub>26</sub>H<sub>18</sub>ClFN<sub>2</sub>O<sub>3</sub>S<sub>2</sub>).



Mol	Chain	Residues	Atoms						ZeroOcc	AltConf	
			Total	C	Cl	F	N	O			S
4	A	1	Total	C	Cl	F	N	O	S	0	0
			35	26	1	1	2	3	2		
4	B	1	Total	C	Cl	F	N	O	S	0	0
			35	26	1	1	2	3	2		
4	C	1	Total	C	Cl	F	N	O	S	0	0
			35	26	1	1	2	3	2		
4	D	1	Total	C	Cl	F	N	O	S	0	0
			35	26	1	1	2	3	2		

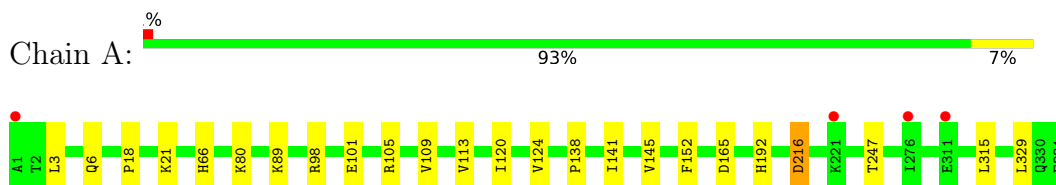
- Molecule 5 is water.

Mol	Chain	Residues	Atoms		ZeroOcc	AltConf
5	A	30	Total	O	0	0
			30	30		
5	B	34	Total	O	0	0
			34	34		
5	C	28	Total	O	0	0
			28	28		
5	D	39	Total	O	0	0
			39	39		

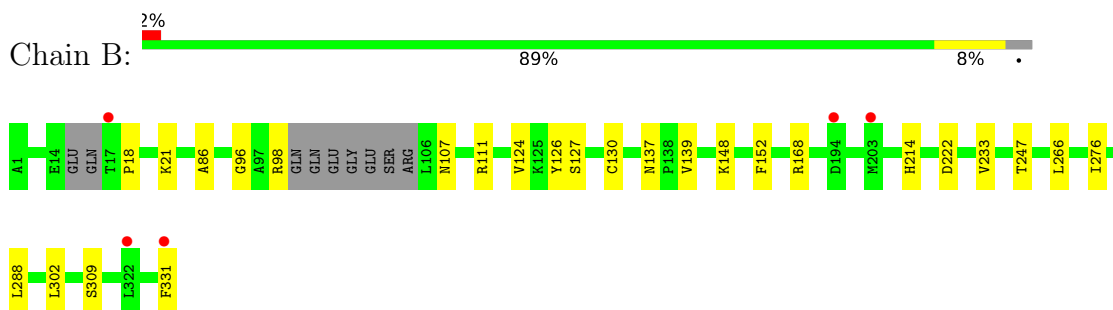
### 3 Residue-property plots [i](#)

These plots are drawn for all protein, RNA, DNA and oligosaccharide chains in the entry. The first graphic for a chain summarises the proportions of the various outlier classes displayed in the second graphic. The second graphic shows the sequence view annotated by issues in geometry and electron density. Residues are color-coded according to the number of geometric quality criteria for which they contain at least one outlier: green = 0, yellow = 1, orange = 2 and red = 3 or more. A red dot above a residue indicates a poor fit to the electron density ( $RSRZ > 2$ ). Stretches of 2 or more consecutive residues without any outlier are shown as a green connector. Residues present in the sample, but not in the model, are shown in grey.

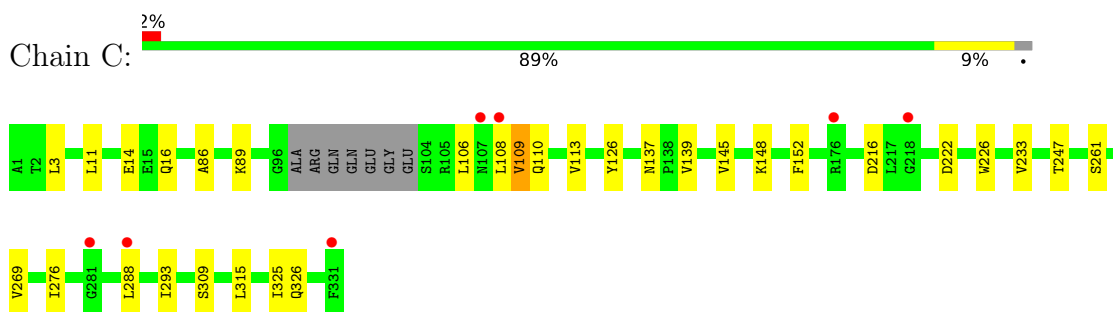
- Molecule 1: L-lactate dehydrogenase A chain



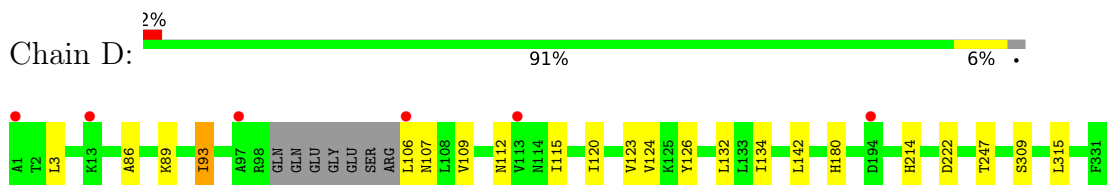
- Molecule 1: L-lactate dehydrogenase A chain



- Molecule 1: L-lactate dehydrogenase A chain



- Molecule 1: L-lactate dehydrogenase A chain



## 4 Data and refinement statistics

Property	Value	Source
Space group	P 1 21 1	Depositor
Cell constants a, b, c, $\alpha$ , $\beta$ , $\gamma$	74.70Å 80.80Å 103.05Å 90.00° 96.77° 90.00°	Depositor
Resolution (Å)	37.58 – 2.40 37.58 – 2.40	Depositor EDS
% Data completeness (in resolution range)	83.1 (37.58-2.40) 85.0 (37.58-2.40)	Depositor EDS
$R_{merge}$	(Not available)	Depositor
$R_{sym}$	0.09	Depositor
$\langle I/\sigma(I) \rangle$ <sup>1</sup>	4.07 (at 2.37Å)	Xtrriage
Refinement program	BUSTER 2.11.6	Depositor
R, $R_{free}$	0.208 , 0.224 0.208 , 0.229	Depositor DCC
$R_{free}$ test set	886 reflections (2.15%)	wwPDB-VP
Wilson B-factor (Å <sup>2</sup> )	36.0	Xtrriage
Anisotropy	0.132	Xtrriage
Bulk solvent $k_{sol}$ (e/Å <sup>3</sup> ), $B_{sol}$ (Å <sup>2</sup> )	0.28 , 22.5	EDS
L-test for twinning <sup>2</sup>	$\langle  L  \rangle = 0.49$ , $\langle L^2 \rangle = 0.33$	Xtrriage
Estimated twinning fraction	No twinning to report.	Xtrriage
$F_o, F_c$ correlation	0.93	EDS
Total number of atoms	10570	wwPDB-VP
Average B, all atoms (Å <sup>2</sup> )	42.0	wwPDB-VP

Xtrriage's analysis on translational NCS is as follows: *The largest off-origin peak in the Patterson function is 4.70% of the height of the origin peak. No significant pseudotranslation is detected.*

<sup>1</sup>Intensities estimated from amplitudes.

<sup>2</sup>Theoretical values of  $\langle |L| \rangle$ ,  $\langle L^2 \rangle$  for acentric reflections are 0.5, 0.333 respectively for untwinned datasets, and 0.375, 0.2 for perfectly twinned datasets.

## 5 Model quality i

### 5.1 Standard geometry i

Bond lengths and bond angles in the following residue types are not validated in this section: D4A, NAD, SO4

The Z score for a bond length (or angle) is the number of standard deviations the observed value is removed from the expected value. A bond length (or angle) with  $|Z| > 5$  is considered an outlier worth inspection. RMSZ is the root-mean-square of all Z scores of the bond lengths (or angles).

Mol	Chain	Bond lengths		Bond angles	
		RMSZ	# Z  >5	RMSZ	# Z  >5
1	A	0.76	1/2612 (0.0%)	1.25	4/3532 (0.1%)
1	B	0.74	0/2535	1.27	7/3427 (0.2%)
1	C	0.76	0/2555	1.26	7/3455 (0.2%)
1	D	0.78	1/2561 (0.0%)	1.27	3/3463 (0.1%)
All	All	0.76	2/10263 (0.0%)	1.26	21/13877 (0.2%)

All (2) bond length outliers are listed below:

Mol	Chain	Res	Type	Atoms	Z	Observed(Å)	Ideal(Å)
1	D	120	ILE	CA-CB	6.71	1.57	1.54
1	A	120	ILE	CA-CB	5.50	1.56	1.54

All (21) bond angle outliers are listed below:

Mol	Chain	Res	Type	Atoms	Z	Observed(°)	Ideal(°)
1	B	96	GLY	N-CA-C	6.79	119.04	110.96
1	C	109	VAL	N-CA-C	-5.84	105.04	110.53
1	D	309	SER	CA-C-N	5.61	127.73	120.44
1	D	309	SER	C-N-CA	5.61	127.73	120.44
1	A	216	ASP	CA-CB-CG	5.53	118.13	112.60
1	B	222	ASP	CA-CB-CG	5.32	117.92	112.60
1	B	233	VAL	N-CA-C	-5.30	105.54	110.53
1	B	309	SER	CA-C-N	5.17	127.16	120.44
1	B	309	SER	C-N-CA	5.17	127.16	120.44
1	C	326	GLN	CA-C-N	5.14	127.42	120.38
1	C	326	GLN	C-N-CA	5.14	127.42	120.38
1	B	331	PHE	CA-CB-CG	5.12	118.92	113.80
1	D	222	ASP	CA-CB-CG	5.07	117.67	112.60
1	A	138	PRO	CA-C-N	5.07	127.68	120.53
1	A	138	PRO	C-N-CA	5.07	127.68	120.53

*Continued on next page...*

Continued from previous page...

Mol	Chain	Res	Type	Atoms	Z	Observed(°)	Ideal(°)
1	C	233	VAL	N-CA-C	-5.06	105.77	110.53
1	A	152	PHE	CA-CB-CG	5.05	118.86	113.80
1	B	152	PHE	CA-CB-CG	5.01	118.81	113.80
1	C	152	PHE	CA-CB-CG	5.01	118.81	113.80
1	C	309	SER	CA-C-N	5.00	126.94	120.44
1	C	309	SER	C-N-CA	5.00	126.94	120.44

There are no chirality outliers.

There are no planarity outliers.

## 5.2 Too-close contacts

In the following table, the Non-H and H(model) columns list the number of non-hydrogen atoms and hydrogen atoms in the chain respectively. The H(added) column lists the number of hydrogen atoms added and optimized by MolProbity. The Clashes column lists the number of clashes within the asymmetric unit, whereas Symm-Clashes lists symmetry-related clashes.

Mol	Chain	Non-H	H(model)	H(added)	Clashes	Symm-Clashes
1	A	2568	0	2656	16	0
1	B	2493	0	2591	11	0
1	C	2512	0	2606	14	0
1	D	2515	0	2610	12	0
2	A	44	0	26	2	0
2	B	44	0	26	1	0
2	C	44	0	26	2	0
2	D	44	0	26	3	0
3	A	10	0	0	0	0
3	B	10	0	0	0	0
3	C	10	0	0	0	0
3	D	5	0	0	0	0
4	A	35	0	0	1	0
4	B	35	0	0	0	0
4	C	35	0	0	0	0
4	D	35	0	0	0	0
5	A	30	0	0	0	0
5	B	34	0	0	0	0
5	C	28	0	0	0	0
5	D	39	0	0	0	0
All	All	10570	0	10567	47	0

The all-atom clashscore is defined as the number of clashes found per 1000 atoms (including

hydrogen atoms). The all-atom clashscore for this structure is 2.

All (47) close contacts within the same asymmetric unit are listed below, sorted by their clash magnitude.

Atom-1	Atom-2	Interatomic distance (Å)	Clash overlap (Å)
1:D:115:ILE:HD12	2:D:401:NAD:H61A	1.60	0.64
1:A:192:HIS:HE1	4:A:404:D4A:O31	1.82	0.61
1:A:109:VAL:HG11	1:A:141:ILE:HG21	1.84	0.59
1:A:247:THR:HG23	2:A:401:NAD:H5N	1.85	0.58
1:C:247:THR:HG23	2:C:401:NAD:H5N	1.85	0.58
1:D:247:THR:HG23	2:D:401:NAD:H5N	1.87	0.56
1:A:165:ASP:OD1	1:A:192:HIS:HD2	1.91	0.54
1:C:216:ASP:O	1:C:222:ASP:HB2	2.08	0.54
1:A:3:LEU:HA	1:A:6:GLN:HG2	1.90	0.53
1:A:3:LEU:HD13	1:A:6:GLN:HE21	1.74	0.52
1:C:113:VAL:HG22	1:C:145:VAL:HG21	1.92	0.52
1:B:276:ILE:HG21	1:B:288:LEU:HD12	1.92	0.52
1:A:3:LEU:CD1	1:A:6:GLN:HE21	2.22	0.51
1:C:3:LEU:HD13	1:D:214:HIS:HB2	1.92	0.51
1:A:3:LEU:HD13	1:B:214:HIS:HB2	1.93	0.50
1:C:110:GLN:HA	1:C:113:VAL:HB	1.92	0.49
1:C:269:VAL:HG22	1:C:293:ILE:HG13	1.95	0.49
1:C:106:LEU:HD12	1:C:325:ILE:HG23	1.96	0.47
1:D:93:ILE:HD12	1:D:93:ILE:N	2.29	0.47
1:C:247:THR:CG2	2:C:401:NAD:H5N	2.45	0.47
1:C:276:ILE:HG21	1:C:288:LEU:HD12	1.95	0.47
1:B:247:THR:HG23	2:B:401:NAD:H5N	1.98	0.46
1:A:109:VAL:CG1	1:A:141:ILE:HG21	2.45	0.46
1:C:109:VAL:O	1:C:113:VAL:HG23	2.16	0.45
1:A:247:THR:CG2	2:A:401:NAD:H5N	2.46	0.45
1:A:105:ARG:O	1:A:109:VAL:HG23	2.17	0.44
1:B:18:PRO:HB2	1:B:21:LYS:HB2	1.98	0.44
1:D:123:VAL:HG11	1:D:132:LEU:HD21	2.00	0.44
1:D:106:LEU:HB3	1:D:109:VAL:HG23	2.00	0.44
1:A:3:LEU:O	1:A:6:GLN:HG2	2.18	0.44
1:D:86:ALA:HA	1:D:126:TYR:HB3	2.01	0.43
1:D:247:THR:CG2	2:D:401:NAD:H5N	2.49	0.42
1:B:127:SER:HB3	1:B:130:CYS:HB3	2.02	0.42
1:C:226:TRP:CE2	1:D:3:LEU:HD23	2.55	0.42
1:C:86:ALA:HA	1:C:126:TYR:HB3	2.02	0.41
1:C:137:ASN:HA	1:C:139:VAL:N	2.35	0.41
1:B:18:PRO:HG3	1:B:21:LYS:HD2	2.03	0.41
1:B:86:ALA:HA	1:B:126:TYR:HB3	2.03	0.41

*Continued on next page...*

Continued from previous page...

Atom-1	Atom-2	Interatomic distance (Å)	Clash overlap (Å)
1:D:112:ASN:HD22	1:D:142:LEU:HD11	1.84	0.41
1:D:93:ILE:HD13	1:D:134:ILE:HD13	2.02	0.41
1:A:101:GLU:CD	1:A:101:GLU:H	2.28	0.41
1:B:302:LEU:HD23	1:C:11:LEU:HD11	2.02	0.41
1:B:137:ASN:HA	1:B:139:VAL:N	2.36	0.40
1:B:266:LEU:O	1:D:180:HIS:HB2	2.21	0.40
1:A:66:HIS:CD2	1:B:168:ARG:HE	2.39	0.40
1:A:18:PRO:HB2	1:A:21:LYS:HB2	2.04	0.40
1:A:113:VAL:HG22	1:A:145:VAL:HG21	2.04	0.40

There are no symmetry-related clashes.

### 5.3 Torsion angles [i](#)

#### 5.3.1 Protein backbone [i](#)

In the following table, the Percentiles column shows the percent Ramachandran outliers of the chain as a percentile score with respect to all X-ray entries followed by that with respect to entries of similar resolution.

The Analysed column shows the number of residues for which the backbone conformation was analysed, and the total number of residues.

Mol	Chain	Analysed	Favoured	Allowed	Outliers	Percentiles	
1	A	329/331 (99%)	322 (98%)	7 (2%)	0	100	100
1	B	316/331 (96%)	308 (98%)	8 (2%)	0	100	100
1	C	320/331 (97%)	310 (97%)	9 (3%)	1 (0%)	36	50
1	D	321/331 (97%)	313 (98%)	8 (2%)	0	100	100
All	All	1286/1324 (97%)	1253 (97%)	32 (2%)	1 (0%)	48	64

All (1) Ramachandran outliers are listed below:

Mol	Chain	Res	Type
1	C	14	GLU

#### 5.3.2 Protein sidechains [i](#)

In the following table, the Percentiles column shows the percent sidechain outliers of the chain as a percentile score with respect to all X-ray entries followed by that with respect to entries of similar

resolution.

The Analysed column shows the number of residues for which the sidechain conformation was analysed, and the total number of residues.

Mol	Chain	Analysed	Rotameric	Outliers	Percentiles	
1	A	287/287 (100%)	280 (98%)	7 (2%)	43	65
1	B	279/287 (97%)	274 (98%)	5 (2%)	51	73
1	C	282/287 (98%)	276 (98%)	6 (2%)	47	69
1	D	282/287 (98%)	277 (98%)	5 (2%)	51	73
All	All	1130/1148 (98%)	1107 (98%)	23 (2%)	48	70

All (23) residues with a non-rotameric sidechain are listed below:

Mol	Chain	Res	Type
1	A	80	LYS
1	A	89	LYS
1	A	98	ARG
1	A	124	VAL
1	A	216	ASP
1	A	315	LEU
1	A	329	LEU
1	B	98	ARG
1	B	107	ASN
1	B	111	ARG
1	B	124	VAL
1	B	148	LYS
1	C	16	GLN
1	C	89	LYS
1	C	108	LEU
1	C	148	LYS
1	C	261	SER
1	C	315	LEU
1	D	89	LYS
1	D	93	ILE
1	D	107	ASN
1	D	124	VAL
1	D	315	LEU

Sometimes sidechains can be flipped to improve hydrogen bonding and reduce clashes. All (17) such sidechains are listed below:

Mol	Chain	Res	Type
1	A	6	GLN
1	A	16	GLN
1	A	66	HIS
1	A	122	ASN
1	A	192	HIS
1	A	225	GLN
1	A	296	GLN
1	B	10	ASN
1	B	129	ASN
1	B	296	GLN
1	C	6	GLN
1	C	114	ASN
1	C	326	GLN
1	D	66	HIS
1	D	87	ASN
1	D	112	ASN
1	D	326	GLN

### 5.3.3 RNA [i](#)

There are no RNA molecules in this entry.

### 5.4 Non-standard residues in protein, DNA, RNA chains [i](#)

There are no non-standard protein/DNA/RNA residues in this entry.

### 5.5 Carbohydrates [i](#)

There are no oligosaccharides in this entry.

### 5.6 Ligand geometry [i](#)

15 ligands are modelled in this entry.

In the following table, the Counts columns list the number of bonds (or angles) for which Mogul statistics could be retrieved, the number of bonds (or angles) that are observed in the model and the number of bonds (or angles) that are defined in the Chemical Component Dictionary. The Link column lists molecule types, if any, to which the group is linked. The Z score for a bond length (or angle) is the number of standard deviations the observed value is removed from the expected value. A bond length (or angle) with  $|Z| > 2$  is considered an outlier worth inspection. RMSZ is the root-mean-square of all Z scores of the bond lengths (or angles).

Mol	Type	Chain	Res	Link	Bond lengths			Bond angles		
					Counts	RMSZ	# Z  > 2	Counts	RMSZ	# Z  > 2
2	NAD	D	401	-	46,48,48	0.99	3 (6%)	64,73,73	1.11	6 (9%)
2	NAD	C	401	-	46,48,48	1.02	3 (6%)	64,73,73	1.19	8 (12%)
3	SO4	B	403	-	4,4,4	0.22	0	6,6,6	0.17	0
4	D4A	B	404	-	38,39,39	0.97	2 (5%)	40,56,56	1.03	3 (7%)
4	D4A	A	404	-	38,39,39	1.01	2 (5%)	40,56,56	1.01	2 (5%)
4	D4A	D	403	-	38,39,39	1.02	2 (5%)	40,56,56	0.94	2 (5%)
3	SO4	C	402	-	4,4,4	0.30	0	6,6,6	0.26	0
2	NAD	B	401	-	46,48,48	0.93	4 (8%)	64,73,73	1.07	5 (7%)
3	SO4	B	402	-	4,4,4	0.33	0	6,6,6	0.14	0
3	SO4	A	403	-	4,4,4	0.31	0	6,6,6	0.06	0
3	SO4	D	402	-	4,4,4	0.24	0	6,6,6	0.22	0
3	SO4	A	402	-	4,4,4	0.28	0	6,6,6	0.15	0
2	NAD	A	401	-	46,48,48	0.89	3 (6%)	64,73,73	1.11	6 (9%)
4	D4A	C	404	-	38,39,39	0.94	2 (5%)	40,56,56	1.12	5 (12%)
3	SO4	C	403	-	4,4,4	0.24	0	6,6,6	0.18	0

In the following table, the Chirals column lists the number of chiral outliers, the number of chiral centers analysed, the number of these observed in the model and the number defined in the Chemical Component Dictionary. Similar counts are reported in the Torsion and Rings columns. '-' means no outliers of that kind were identified.

Mol	Type	Chain	Res	Link	Chirals	Torsions	Rings
2	NAD	D	401	-	-	4/30/62/62	0/5/5/5
2	NAD	C	401	-	-	5/30/62/62	0/5/5/5
4	D4A	B	404	-	-	2/15/38/38	0/5/5/5
4	D4A	A	404	-	-	0/15/38/38	0/5/5/5
4	D4A	D	403	-	-	0/15/38/38	0/5/5/5
2	NAD	B	401	-	-	5/30/62/62	0/5/5/5
2	NAD	A	401	-	-	4/30/62/62	0/5/5/5
4	D4A	C	404	-	-	1/15/38/38	0/5/5/5

All (21) bond length outliers are listed below:

Mol	Chain	Res	Type	Atoms	Z	Observed(Å)	Ideal(Å)
4	D	403	D4A	C26-C15	-3.81	1.47	1.51
2	C	401	NAD	PA-O3	3.29	1.63	1.59
4	B	404	D4A	C26-C15	-3.25	1.48	1.51
4	A	404	D4A	C26-C15	-3.24	1.48	1.51
4	C	404	D4A	C26-C15	-3.20	1.48	1.51

*Continued on next page...*

Continued from previous page...

Mol	Chain	Res	Type	Atoms	Z	Observed(Å)	Ideal(Å)
2	D	401	NAD	PN-O3	3.05	1.62	1.59
2	D	401	NAD	PA-O3	2.80	1.62	1.59
4	A	404	D4A	C22-S34	-2.80	1.71	1.76
2	D	401	NAD	C7N-N7N	2.78	1.38	1.33
2	C	401	NAD	C7N-N7N	2.73	1.38	1.33
2	B	401	NAD	PN-O3	2.70	1.62	1.59
2	C	401	NAD	PN-O3	2.62	1.62	1.59
2	A	401	NAD	C7N-N7N	2.62	1.37	1.33
2	B	401	NAD	C7N-N7N	2.53	1.37	1.33
4	B	404	D4A	C22-S34	-2.51	1.72	1.76
4	D	403	D4A	C22-S34	-2.43	1.72	1.76
2	B	401	NAD	PA-O3	2.37	1.62	1.59
2	A	401	NAD	C6A-N6A	2.31	1.40	1.34
2	B	401	NAD	C6A-N6A	2.16	1.39	1.34
4	C	404	D4A	C22-S34	-2.10	1.73	1.76
2	A	401	NAD	PA-O3	2.07	1.61	1.59

All (37) bond angle outliers are listed below:

Mol	Chain	Res	Type	Atoms	Z	Observed(°)	Ideal(°)
4	B	404	D4A	O30-C24-O29	4.11	122.77	117.56
4	A	404	D4A	O30-C24-O29	3.76	122.33	117.56
4	D	403	D4A	O30-C24-O29	3.35	121.81	117.56
4	C	404	D4A	O30-C24-O29	3.22	121.65	117.56
4	B	404	D4A	O29-C24-C22	-3.01	120.90	126.25
2	C	401	NAD	C4D-O4D-C1D	-2.93	107.24	109.92
2	B	401	NAD	O4B-C1B-N9A	2.88	113.61	108.09
2	D	401	NAD	C3N-C7N-N7N	-2.87	114.20	117.74
2	A	401	NAD	C4D-O4D-C1D	-2.82	107.34	109.92
2	D	401	NAD	C4D-O4D-C1D	-2.74	107.41	109.92
2	D	401	NAD	O4B-C1B-N9A	2.71	113.29	108.09
2	A	401	NAD	O2A-PA-O1A	2.70	125.01	112.44
2	C	401	NAD	C3N-C7N-N7N	-2.69	114.43	117.74
2	C	401	NAD	O4B-C1B-N9A	2.67	113.23	108.09
4	B	404	D4A	C16-N28-C21	-2.64	121.96	128.75
4	A	404	D4A	O29-C24-C22	-2.42	121.96	126.25
2	C	401	NAD	C4A-N9A-C8A	2.36	108.22	105.74
4	C	404	D4A	C18-S34-C22	2.36	105.80	102.81
4	D	403	D4A	C16-N28-C21	-2.35	122.71	128.75
4	C	404	D4A	O29-C24-C22	-2.34	122.10	126.25
2	A	401	NAD	O4B-C1B-N9A	2.33	112.56	108.09
2	B	401	NAD	C4A-N9A-C8A	2.30	108.15	105.74

Continued on next page...

Continued from previous page...

Mol	Chain	Res	Type	Atoms	Z	Observed(°)	Ideal(°)
4	C	404	D4A	C8-C18-C19	2.29	120.54	117.55
2	A	401	NAD	N9A-C8A-N7A	-2.27	110.72	113.94
2	A	401	NAD	C5N-C4N-C3N	-2.26	118.14	120.36
2	D	401	NAD	C4A-N9A-C8A	2.25	108.10	105.74
2	B	401	NAD	C3N-C7N-N7N	-2.25	114.97	117.74
2	A	401	NAD	C4A-N9A-C8A	2.25	108.10	105.74
2	D	401	NAD	N9A-C8A-N7A	-2.24	110.76	113.94
2	C	401	NAD	C5N-C4N-C3N	-2.22	118.18	120.36
2	B	401	NAD	C4D-O4D-C1D	-2.21	107.91	109.92
2	D	401	NAD	O2A-PA-O1A	2.18	122.61	112.44
2	B	401	NAD	N9A-C8A-N7A	-2.08	110.99	113.94
4	C	404	D4A	C26-C15-C14	-2.05	122.08	127.11
2	C	401	NAD	N6A-C6A-N1A	2.04	122.92	118.38
2	C	401	NAD	N9A-C8A-N7A	-2.03	111.06	113.94
2	C	401	NAD	O2N-PN-O1N	2.02	121.85	112.44

There are no chirality outliers.

All (21) torsion outliers are listed below:

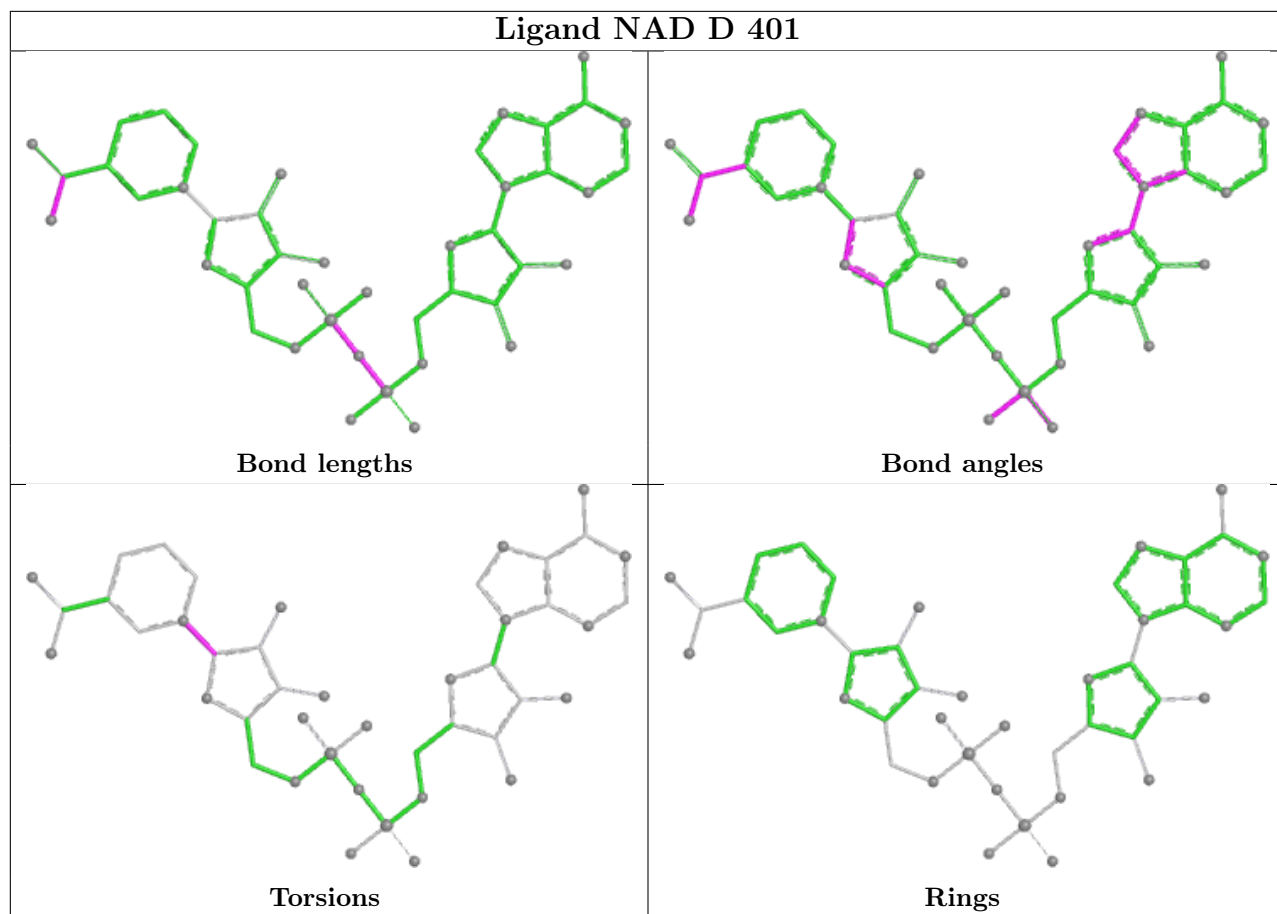
Mol	Chain	Res	Type	Atoms
2	A	401	NAD	O4D-C1D-N1N-C2N
2	A	401	NAD	O4D-C1D-N1N-C6N
2	A	401	NAD	C2D-C1D-N1N-C2N
2	A	401	NAD	C2D-C1D-N1N-C6N
2	B	401	NAD	O4D-C1D-N1N-C2N
2	B	401	NAD	O4D-C1D-N1N-C6N
2	B	401	NAD	C2D-C1D-N1N-C2N
2	B	401	NAD	C2D-C1D-N1N-C6N
2	C	401	NAD	O4D-C1D-N1N-C2N
2	C	401	NAD	O4D-C1D-N1N-C6N
2	C	401	NAD	C2D-C1D-N1N-C2N
2	D	401	NAD	O4D-C1D-N1N-C2N
2	D	401	NAD	O4D-C1D-N1N-C6N
2	D	401	NAD	C2D-C1D-N1N-C2N
4	C	404	D4A	C12-C15-C26-C25
4	B	404	D4A	C11-C21-N28-C16
4	B	404	D4A	N27-C21-N28-C16
2	C	401	NAD	C2D-C1D-N1N-C6N
2	D	401	NAD	C2D-C1D-N1N-C6N
2	B	401	NAD	C2B-C1B-N9A-C8A
2	C	401	NAD	C2B-C1B-N9A-C8A

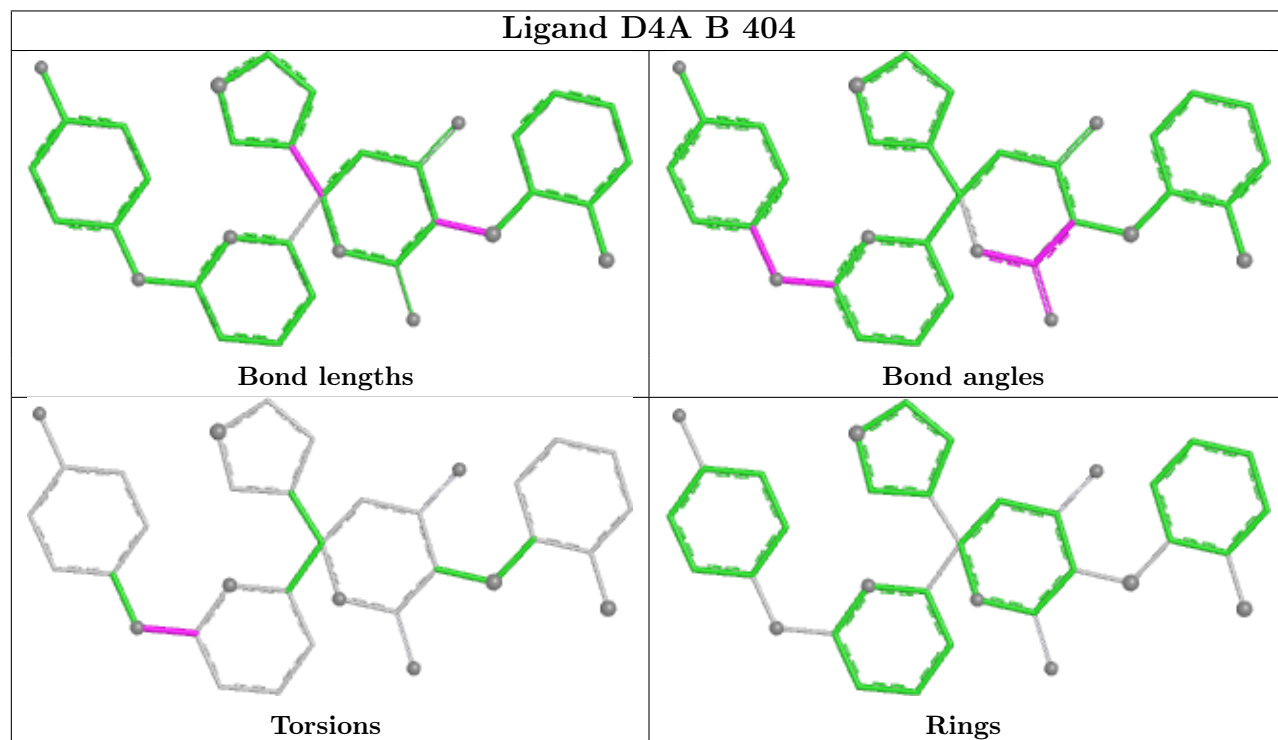
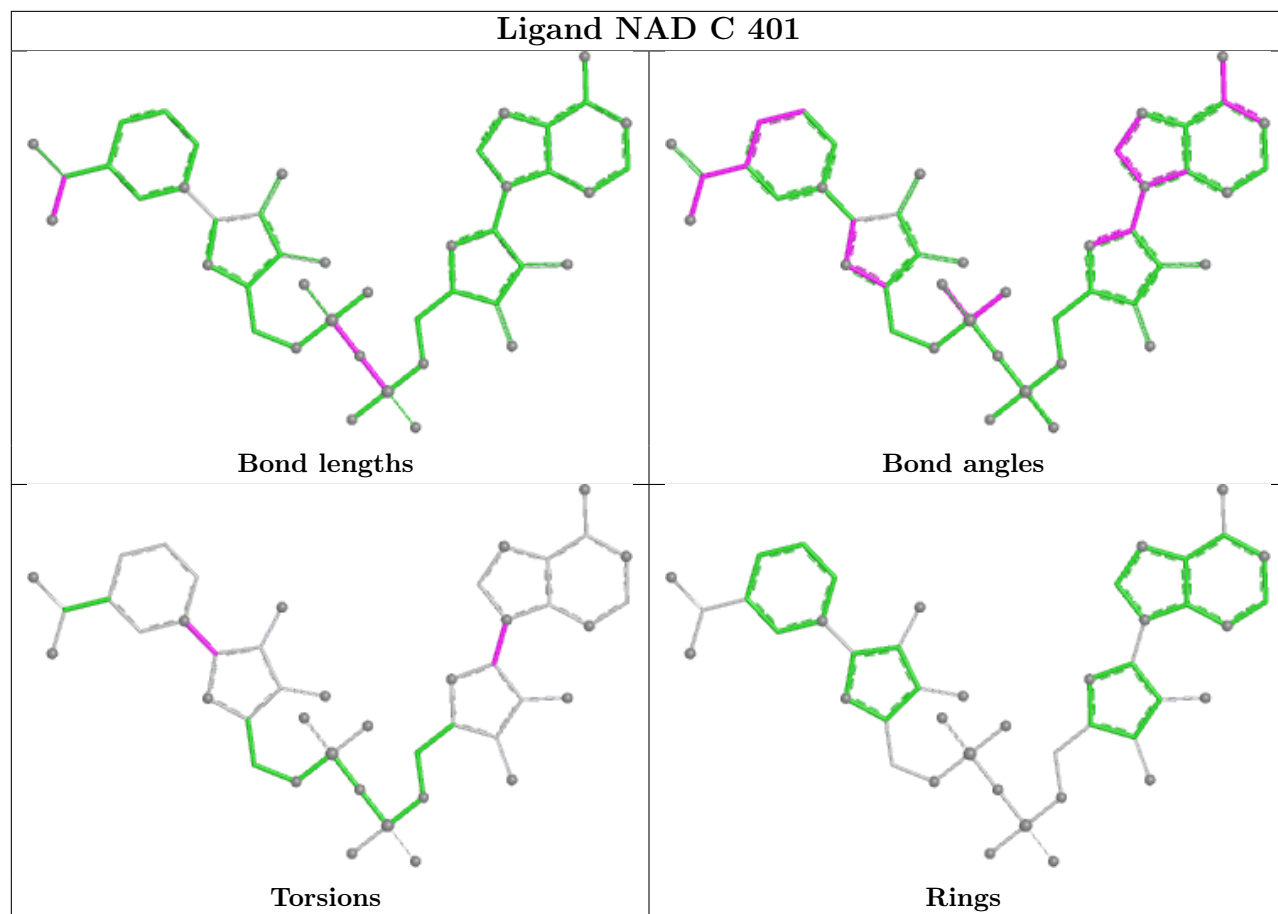
There are no ring outliers.

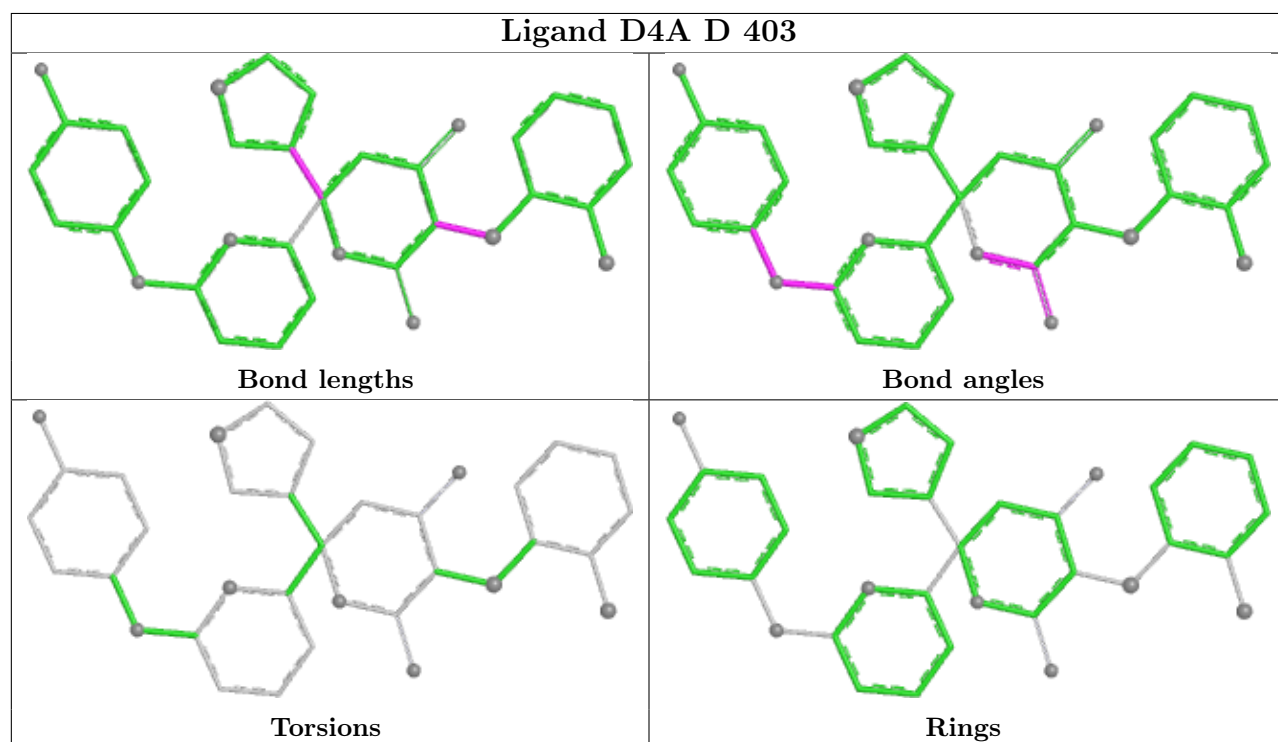
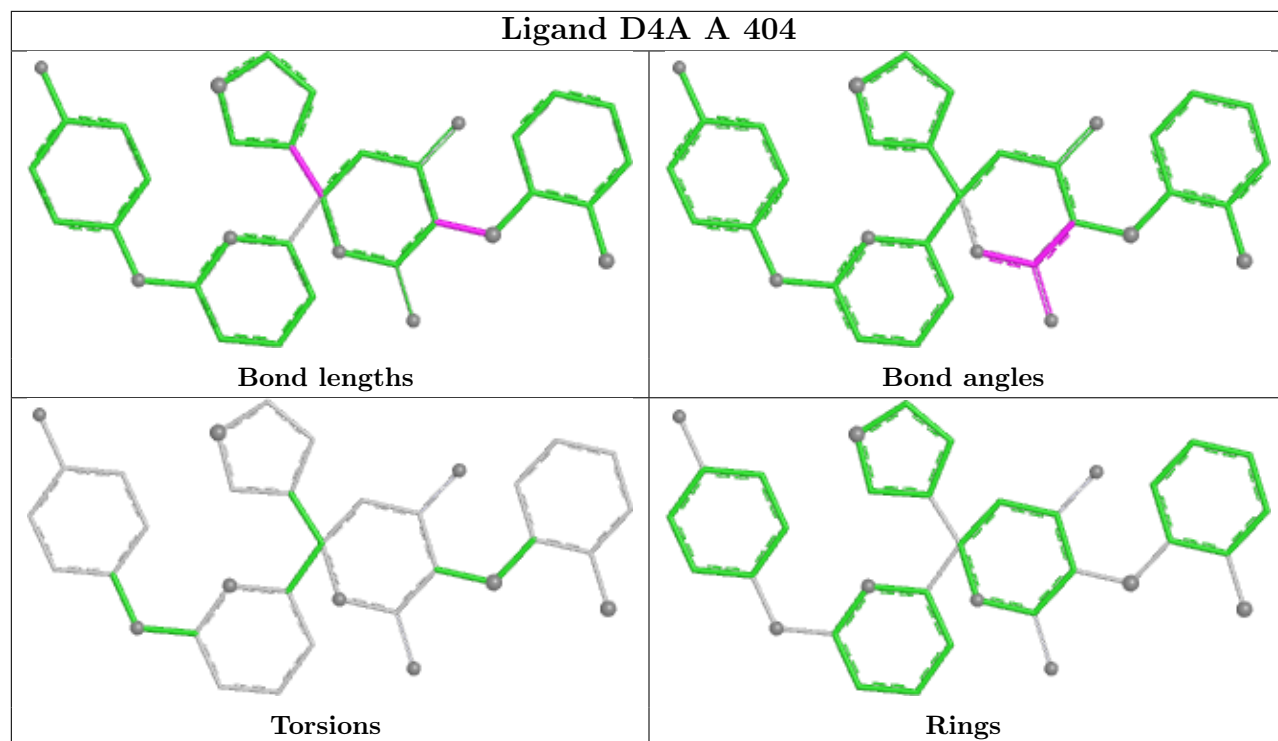
5 monomers are involved in 9 short contacts:

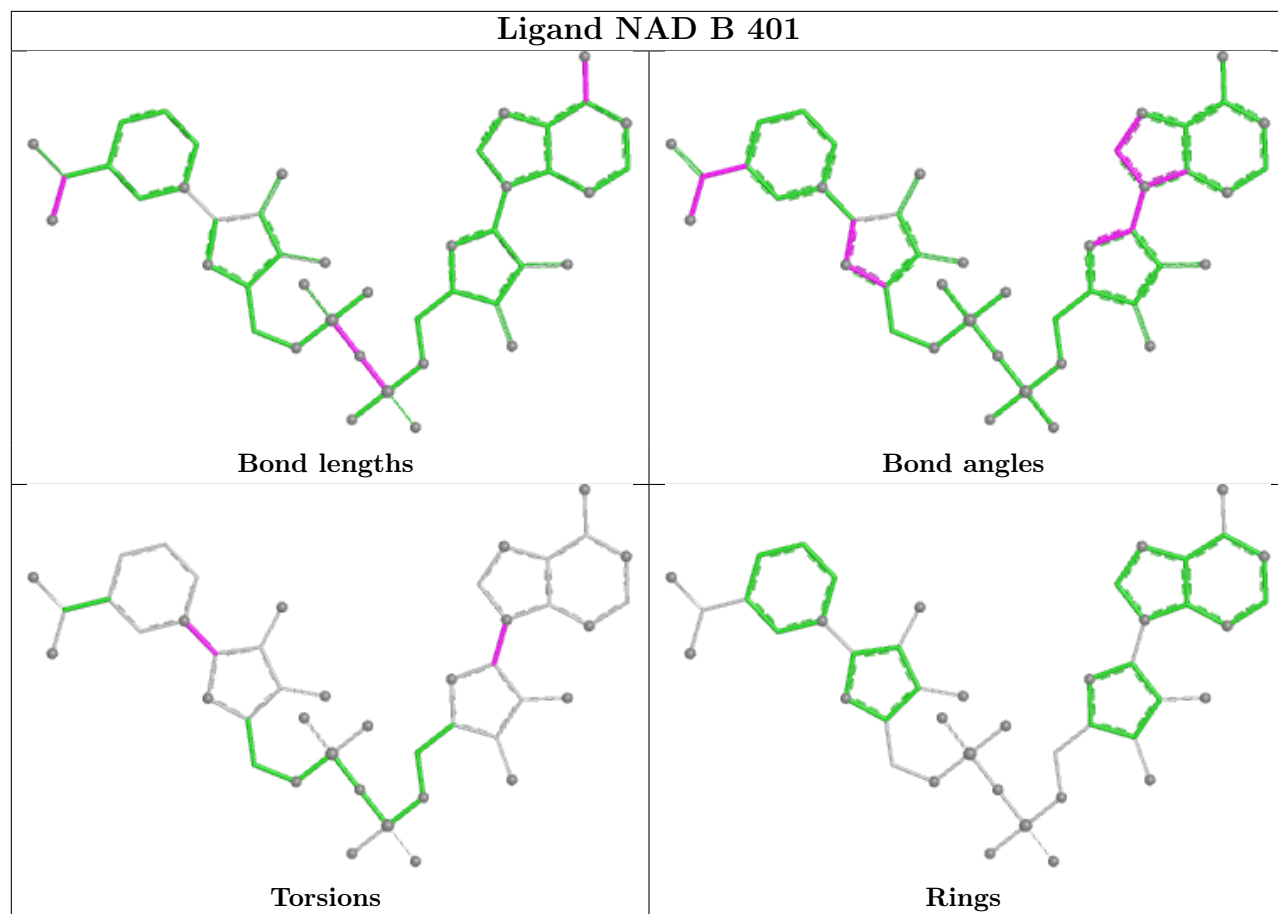
Mol	Chain	Res	Type	Clashes	Symm-Clashes
2	D	401	NAD	3	0
2	C	401	NAD	2	0
4	A	404	D4A	1	0
2	B	401	NAD	1	0
2	A	401	NAD	2	0

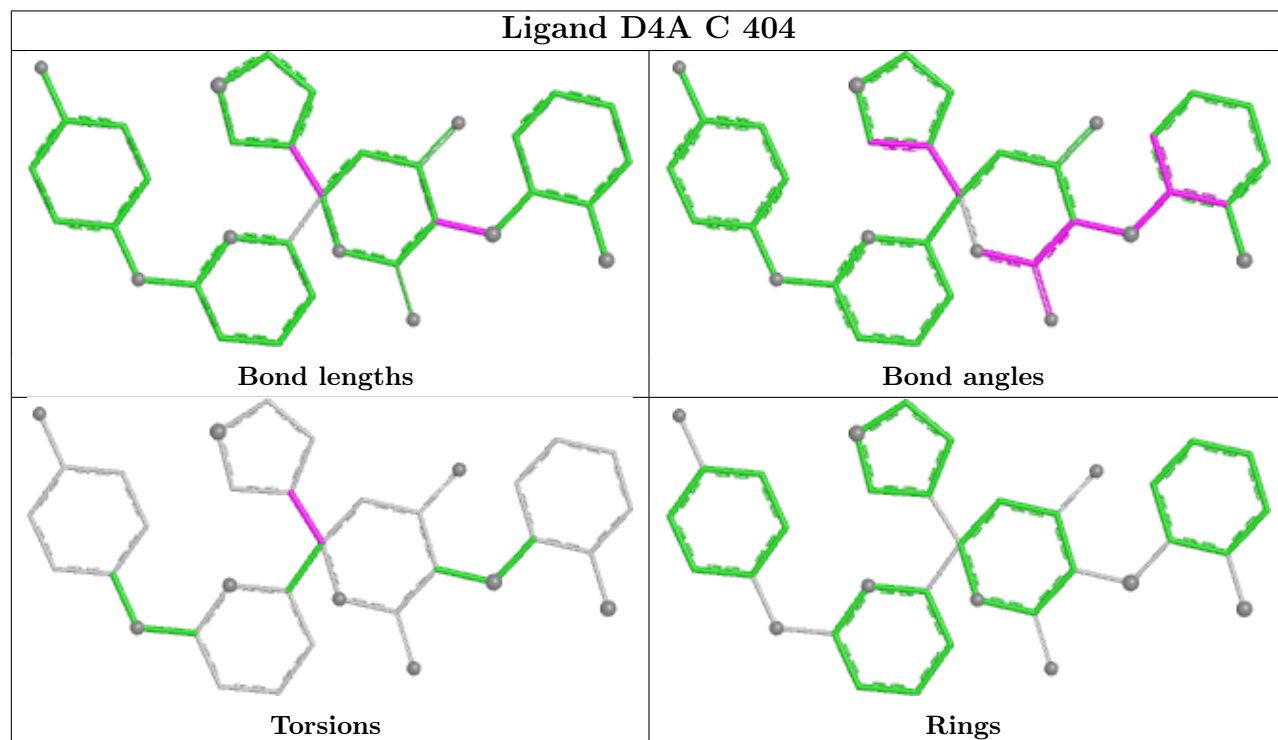
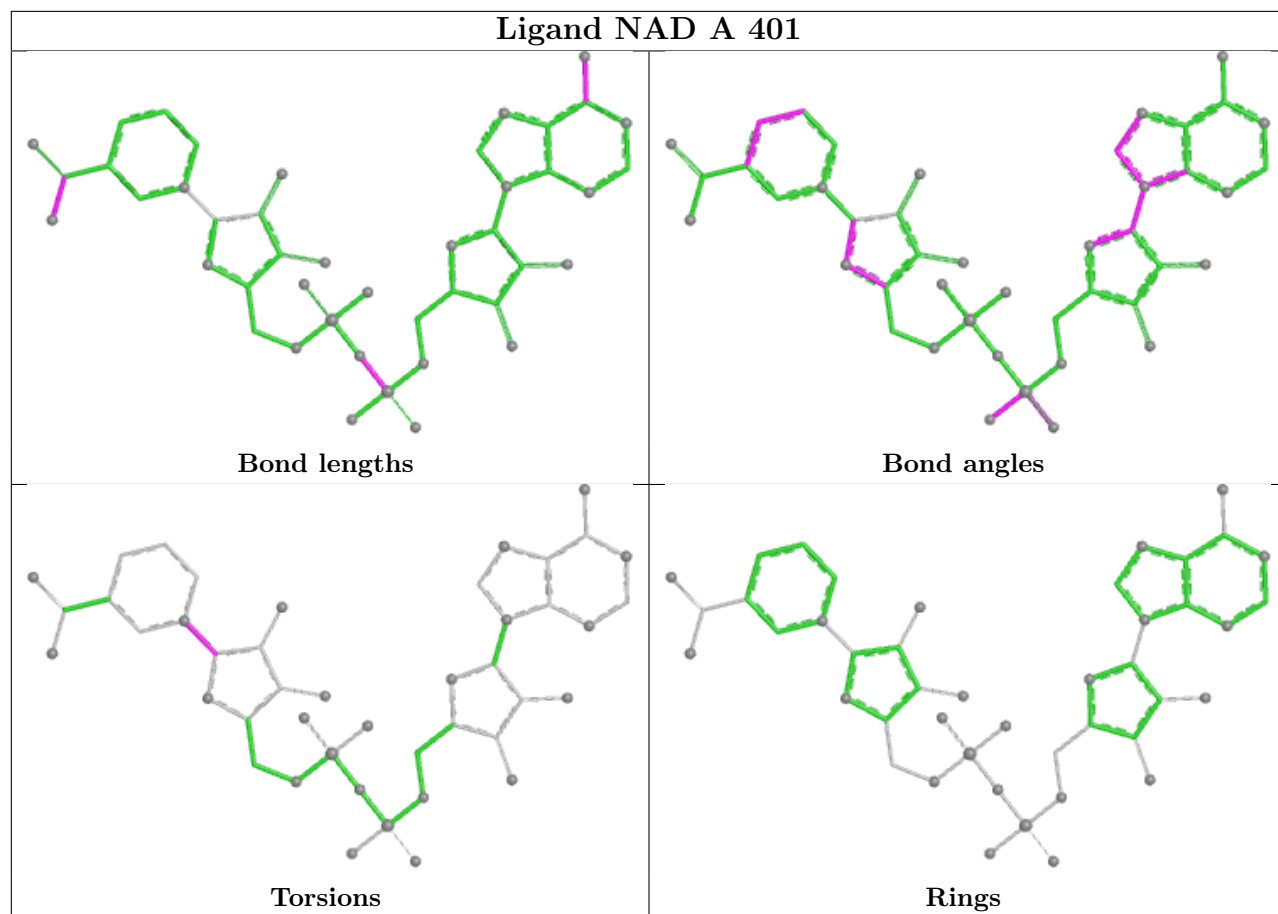
The following is a two-dimensional graphical depiction of Mogul quality analysis of bond lengths, bond angles, torsion angles, and ring geometry for all instances of the Ligand of Interest. In addition, ligands with molecular weight > 250 and outliers as shown on the validation Tables will also be included. For torsion angles, if less than 5% of the Mogul distribution of torsion angles is within 10 degrees of the torsion angle in question, then that torsion angle is considered an outlier. Any bond that is central to one or more torsion angles identified as an outlier by Mogul will be highlighted in the graph. For rings, the root-mean-square deviation (RMSD) between the ring in question and similar rings identified by Mogul is calculated over all ring torsion angles. If the average RMSD is greater than 60 degrees and the minimal RMSD between the ring in question and any Mogul-identified rings is also greater than 60 degrees, then that ring is considered an outlier. The outliers are highlighted in purple. The color gray indicates Mogul did not find sufficient equivalents in the CSD to analyse the geometry.











## 5.7 Other polymers [i](#)

There are no such residues in this entry.

## 5.8 Polymer linkage issues [i](#)

There are no chain breaks in this entry.

## 6 Fit of model and data

### 6.1 Protein, DNA and RNA chains

In the following table, the column labelled ‘#RSRZ > 2’ contains the number (and percentage) of RSRZ outliers, followed by percent RSRZ outliers for the chain as percentile scores relative to all X-ray entries and entries of similar resolution. The OWAB column contains the minimum, median, 95<sup>th</sup> percentile and maximum values of the occupancy-weighted average B-factor per residue. The column labelled ‘Q < 0.9’ lists the number of (and percentage) of residues with an average occupancy less than 0.9.

Mol	Chain	Analysed	<RSRZ>	#RSRZ>2	OWAB(Å <sup>2</sup> )	Q<0.9
1	A	331/331 (100%)	0.19	4 (1%) 76 73	24, 38, 63, 80	0
1	B	322/331 (97%)	0.20	5 (1%) 70 66	24, 38, 59, 99	1 (0%)
1	C	324/331 (97%)	0.31	7 (2%) 62 58	26, 41, 70, 101	2 (0%)
1	D	324/331 (97%)	0.15	6 (1%) 66 62	23, 35, 63, 87	2 (0%)
All	All	1301/1324 (98%)	0.21	22 (1%) 69 65	23, 38, 64, 101	5 (0%)

All (22) RSRZ outliers are listed below:

Mol	Chain	Res	Type	RSRZ
1	B	17	THR	4.5
1	D	106	LEU	4.4
1	A	1	ALA	3.9
1	D	13	LYS	3.8
1	D	194	ASP	3.0
1	C	108	LEU	3.0
1	A	221	LYS	2.8
1	B	331	PHE	2.6
1	D	97	ALA	2.6
1	C	288	LEU	2.4
1	C	218	GLY	2.3
1	D	1	ALA	2.3
1	A	276	ILE	2.2
1	C	331	PHE	2.2
1	B	203	MET	2.1
1	B	194	ASP	2.1
1	C	107	ASN	2.1
1	C	281	GLY	2.1
1	C	176	ARG	2.0
1	D	113	VAL	2.0
1	A	311	GLU	2.0
1	B	322	LEU	2.0

## 6.2 Non-standard residues in protein, DNA, RNA chains [i](#)

There are no non-standard protein/DNA/RNA residues in this entry.

## 6.3 Carbohydrates [i](#)

There are no oligosaccharides in this entry.

## 6.4 Ligands [i](#)

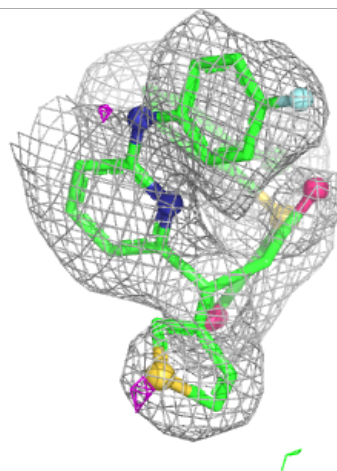
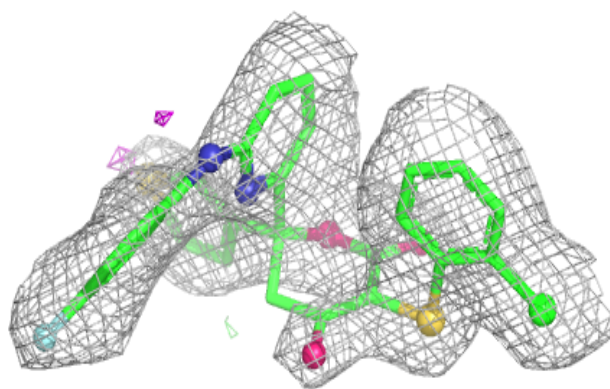
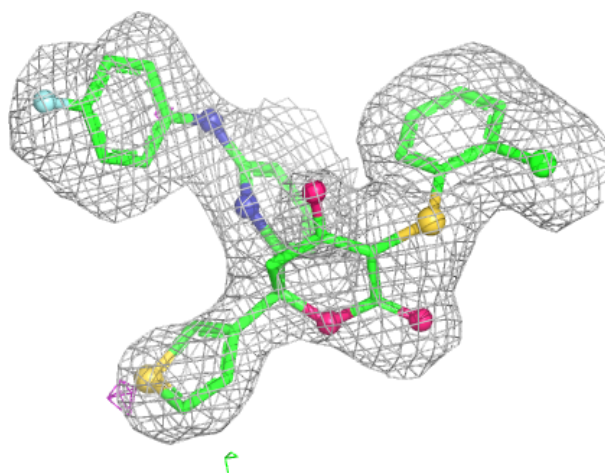
In the following table, the Atoms column lists the number of modelled atoms in the group and the number defined in the chemical component dictionary. The B-factors column lists the minimum, median, 95<sup>th</sup> percentile and maximum values of B factors of atoms in the group. The column labelled 'Q< 0.9' lists the number of atoms with occupancy less than 0.9.

Mol	Type	Chain	Res	Atoms	RSCC	RSR	B-factors(Å <sup>2</sup> )	Q<0.9
3	SO4	C	403	5/5	0.78	0.09	85,86,86,86	0
3	SO4	B	402	5/5	0.83	0.12	62,63,64,65	5
3	SO4	A	403	5/5	0.84	0.12	67,69,69,69	5
3	SO4	C	402	5/5	0.88	0.13	58,60,61,62	0
3	SO4	D	402	5/5	0.88	0.11	66,67,67,69	0
3	SO4	B	403	5/5	0.89	0.09	64,67,68,70	0
3	SO4	A	402	5/5	0.89	0.08	65,65,67,68	0
4	D4A	A	404	35/35	0.91	0.09	32,37,44,44	0
4	D4A	B	404	35/35	0.91	0.10	31,35,50,58	0
4	D4A	C	404	35/35	0.91	0.09	34,44,63,66	0
4	D4A	D	403	35/35	0.92	0.10	35,40,60,61	0
2	NAD	C	401	44/44	0.94	0.08	29,35,38,39	0
2	NAD	A	401	44/44	0.94	0.07	28,34,39,39	0
2	NAD	B	401	44/44	0.94	0.07	24,31,37,40	0
2	NAD	D	401	44/44	0.95	0.07	22,28,33,37	0

The following is a graphical depiction of the model fit to experimental electron density of all instances of the Ligand of Interest. In addition, ligands with molecular weight > 250 and outliers as shown on the geometry validation Tables will also be included. Each fit is shown from different orientation to approximate a three-dimensional view.

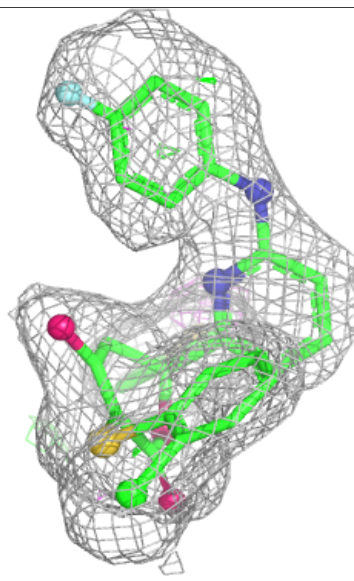
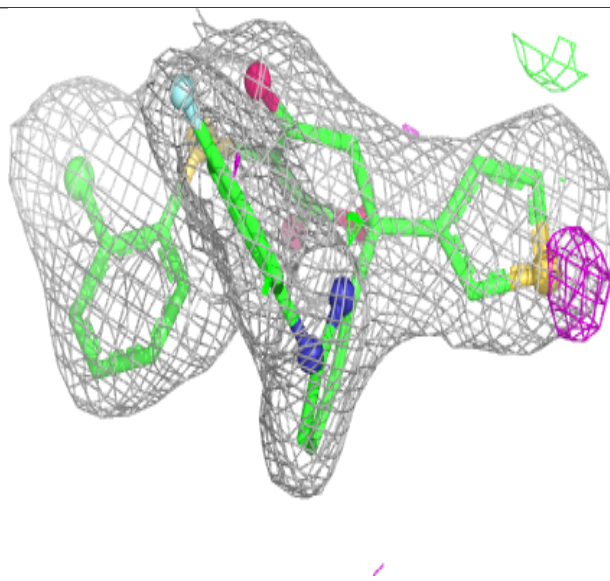
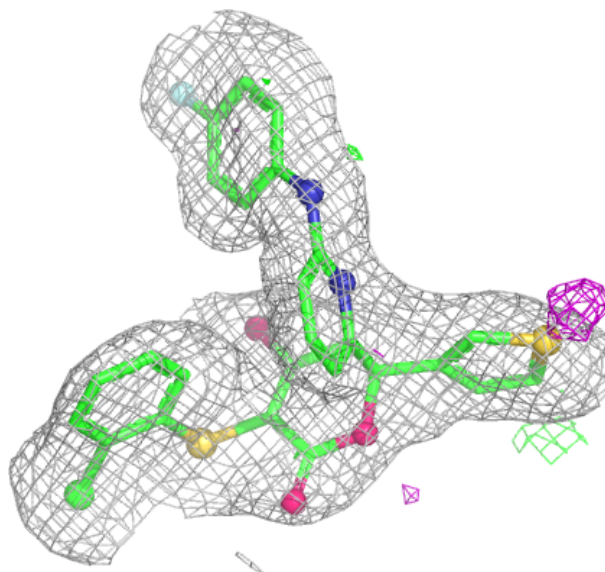
**Electron density around D4A A 404:**

$2mF_o-DF_c$  (at 0.7 rmsd) in gray  
 $mF_o-DF_c$  (at 3 rmsd) in purple (negative)  
and green (positive)



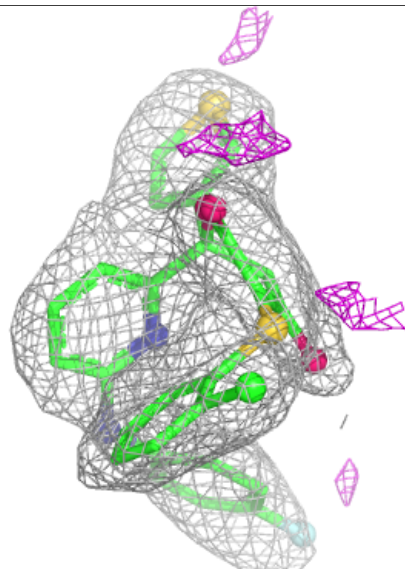
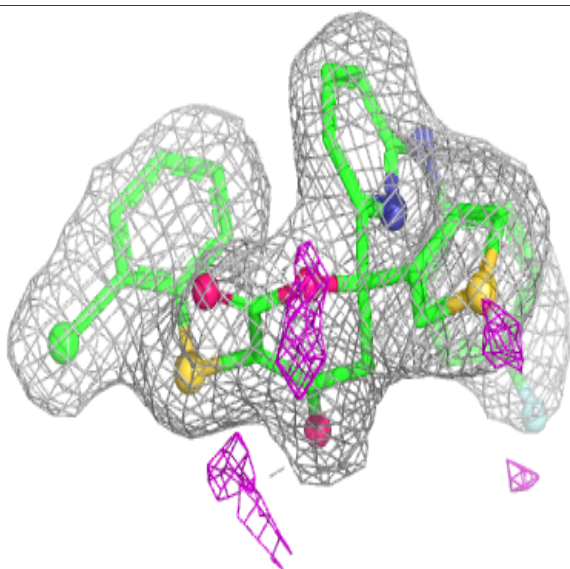
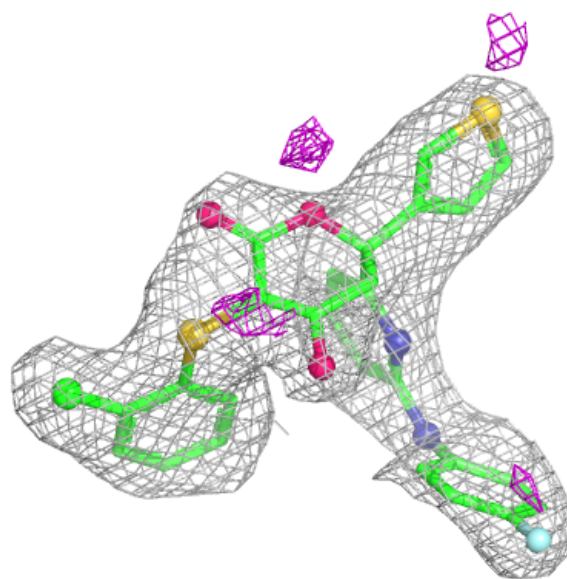
**Electron density around D4A B 404:**

$2mF_o-DF_c$  (at 0.7 rmsd) in gray  
 $mF_o-DF_c$  (at 3 rmsd) in purple (negative)  
and green (positive)



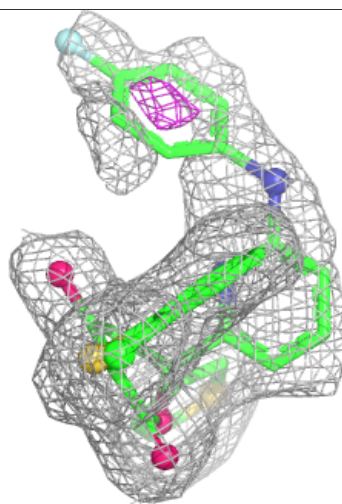
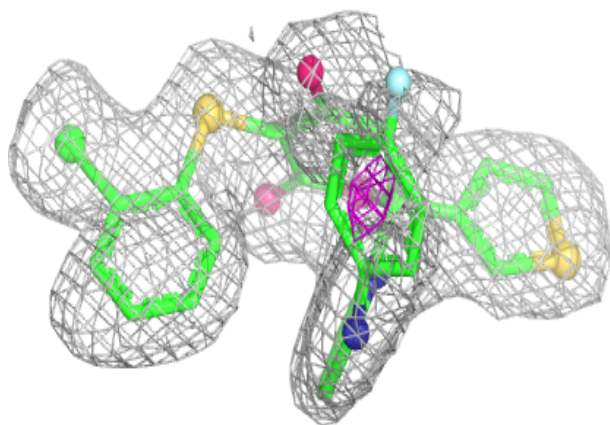
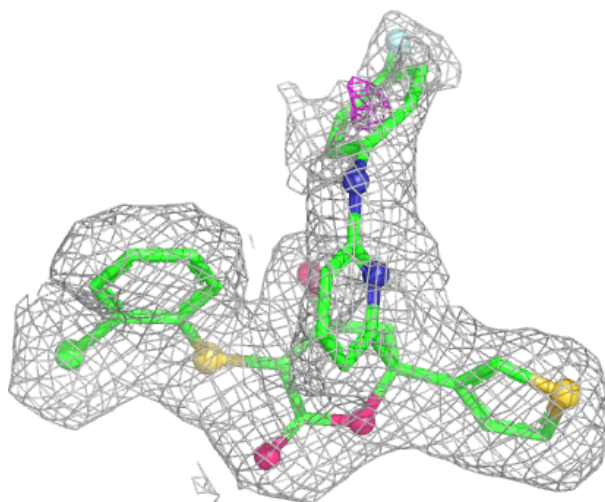
**Electron density around D4A C 404:**

$2mF_o-DF_c$  (at 0.7 rmsd) in gray  
 $mF_o-DF_c$  (at 3 rmsd) in purple (negative)  
and green (positive)



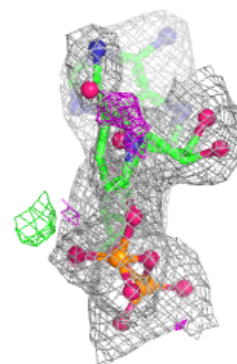
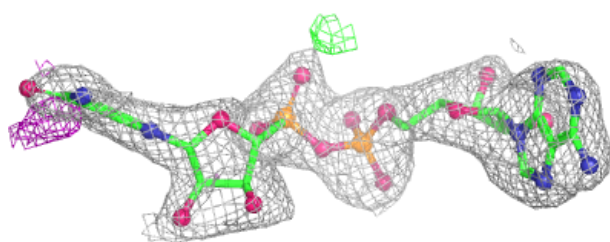
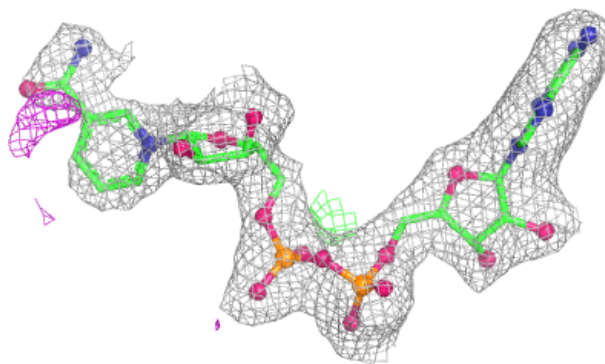
**Electron density around D4A D 403:**

$2mF_o-DF_c$  (at 0.7 rmsd) in gray  
 $mF_o-DF_c$  (at 3 rmsd) in purple (negative)  
and green (positive)

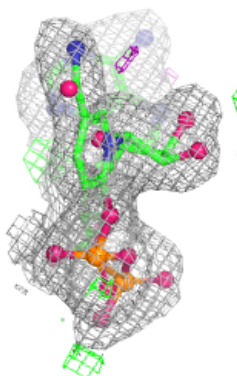
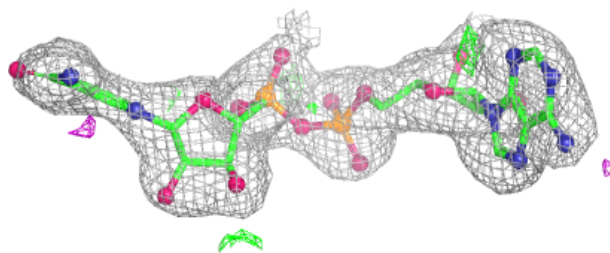
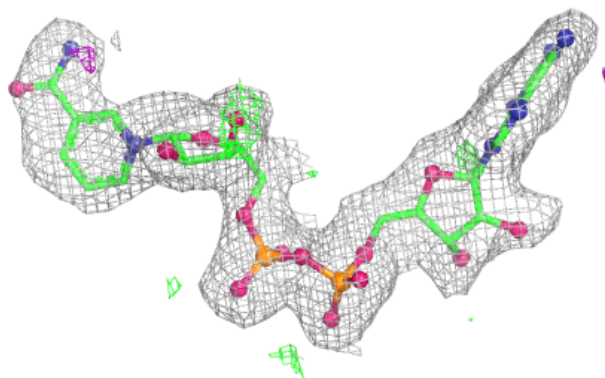


**Electron density around NAD C 401:**

$2mF_o-DF_c$  (at 0.7 rmsd) in gray  
 $mF_o-DF_c$  (at 3 rmsd) in purple (negative)  
and green (positive)

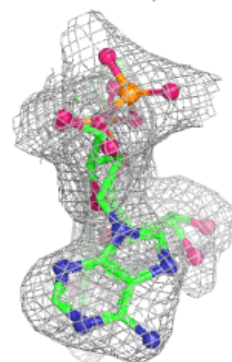
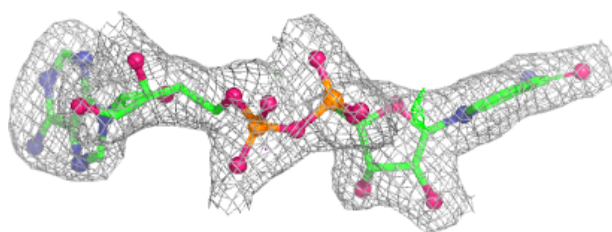
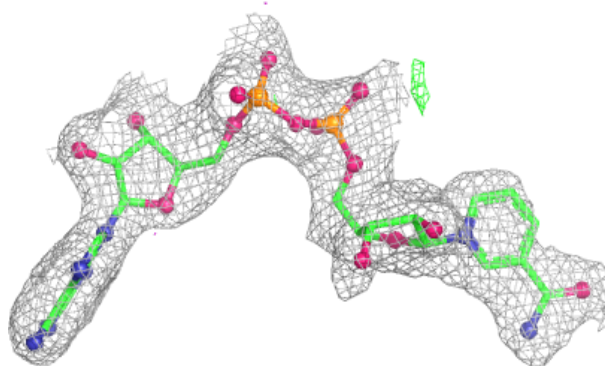
**Electron density around NAD A 401:**

$2mF_o-DF_c$  (at 0.7 rmsd) in gray  
 $mF_o-DF_c$  (at 3 rmsd) in purple (negative)  
and green (positive)

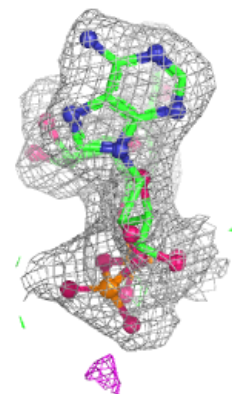
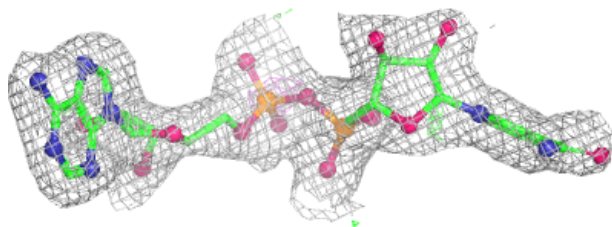
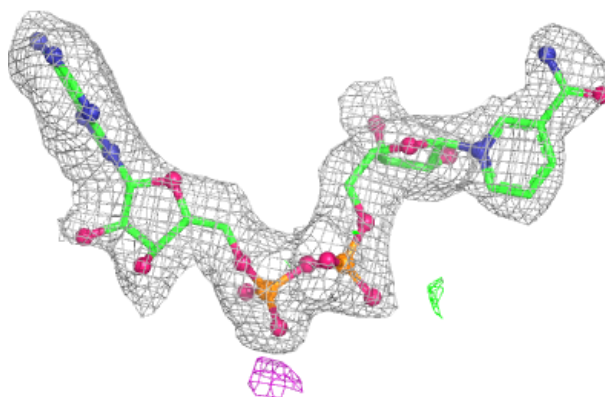


**Electron density around NAD B 401:**

$2mF_o-DF_c$  (at 0.7 rmsd) in gray  
 $mF_o-DF_c$  (at 3 rmsd) in purple (negative)  
and green (positive)

**Electron density around NAD D 401:**

$2mF_o-DF_c$  (at 0.7 rmsd) in gray  
 $mF_o-DF_c$  (at 3 rmsd) in purple (negative)  
and green (positive)



## 6.5 Other polymers [i](#)

There are no such residues in this entry.