



# Full wwPDB X-ray Structure Validation Report ⓘ

Mar 9, 2026 – 12:49 PM UTC

PDB ID : 8BCF / pdb\_00008bcf  
Title : Human Brr2 Helicase Region in complex with C-tail deleted Jab1 and compound 78  
Authors : Vester, K.; Loll, B.; Wahl, M.C.  
Deposited on : 2022-10-15  
Resolution : 2.42 Å(reported)

This is a Full wwPDB X-ray Structure Validation Report for a publicly released PDB entry.

We welcome your comments at [validation@mail.wwpdb.org](mailto:validation@mail.wwpdb.org)

A user guide is available at

<https://www.wwpdb.org/validation/2017/XrayValidationReportHelp>

with specific help available everywhere you see the ⓘ symbol.

The types of validation reports are described at

<http://www.wwpdb.org/validation/2017/FAQs#types>.

---

The following versions of software and data (see [references ⓘ](#)) were used in the production of this report:

MolProbity : 4-5-2 with Phenix2.0  
Mogul : 2022.3.0, CSD as543be (2022)  
Xtrriage (Phenix) : 2.0  
EDS : 3.0  
Buster-report : wwPDB partial adaption of 1.1.7 (2018)  
Percentile statistics : 20250101.v01 (using entries in the PDB archive January 1st 2025)  
CCP4 : 9.0.010 (Gargrove)  
Density-Fitness : 1.0.12  
Ideal geometry (proteins) : Engh & Huber (2001)  
Ideal geometry (DNA, RNA) : Parkinson et al. (1996)  
Validation Pipeline (wwPDB-VP) : 2.49

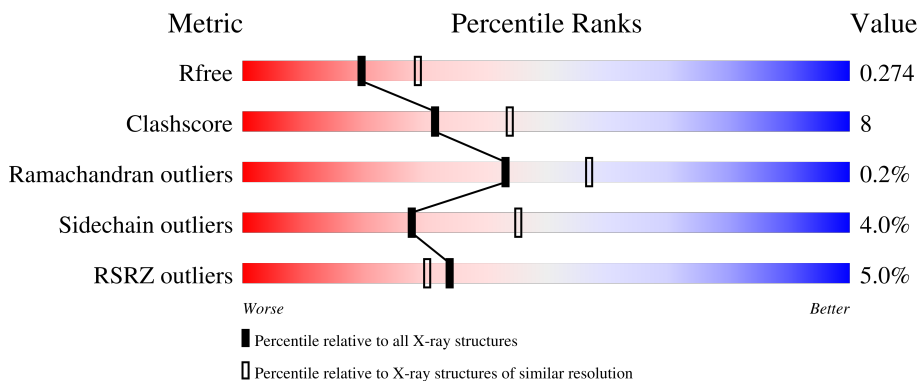
# 1 Overall quality at a glance

The following experimental techniques were used to determine the structure:

*X-RAY DIFFRACTION*

The reported resolution of this entry is 2.42 Å.

Percentile scores (ranging between 0-100) for global validation metrics of the entry are shown in the following graphic. The table shows the number of entries on which the scores are based.



Metric	Whole archive (#Entries)	Similar resolution (#Entries, resolution range(Å))
$R_{free}$	180053	6062 (2.44-2.40)
Clashscore	190562	6562 (2.44-2.40)
Ramachandran outliers	187476	6481 (2.44-2.40)
Sidechain outliers	187428	6482 (2.44-2.40)
RSRZ outliers	180081	6066 (2.44-2.40)

The table below summarises the geometric issues observed across the polymeric chains and their fit to the electron density. The red, orange, yellow and green segments of the lower bar indicate the fraction of residues that contain outliers for  $\geq 3$ , 2, 1 and 0 types of geometric quality criteria respectively. A grey segment represents the fraction of residues that are not modelled. The numeric value for each fraction is indicated below the corresponding segment, with a dot representing fractions  $\leq 5\%$ . The upper red bar (where present) indicates the fraction of residues that have poor fit to the electron density. The numeric value is given above the bar.

Mol	Chain	Length	Quality of chain
1	B	1747	
2	J	263	

## 2 Entry composition i

There are 5 unique types of molecules in this entry. The entry contains 16362 atoms, of which 0 are hydrogens and 0 are deuteriums.

In the tables below, the ZeroOcc column contains the number of atoms modelled with zero occupancy, the AltConf column contains the number of residues with at least one atom in alternate conformation and the Trace column contains the number of residues modelled with at most 2 atoms.

- Molecule 1 is a protein called U5 small nuclear ribonucleoprotein 200 kDa helicase.

Mol	Chain	Residues	Atoms					ZeroOcc	AltConf	Trace
			Total	C	N	O	S			
1	B	1724	13861	8859	2371	2559	72	0	0	0

There are 4 discrepancies between the modelled and reference sequences:

Chain	Residue	Modelled	Actual	Comment	Reference
B	390	GLY	-	expression tag	UNP O75643
B	391	ALA	-	expression tag	UNP O75643
B	392	GLU	-	expression tag	UNP O75643
B	393	PHE	-	expression tag	UNP O75643

- Molecule 2 is a protein called Pre-mRNA-processing-splicing factor 8.

Mol	Chain	Residues	Atoms					ZeroOcc	AltConf	Trace
			Total	C	N	O	S			
2	J	263	2123	1358	365	388	12	0	0	0

There are 6 discrepancies between the modelled and reference sequences:

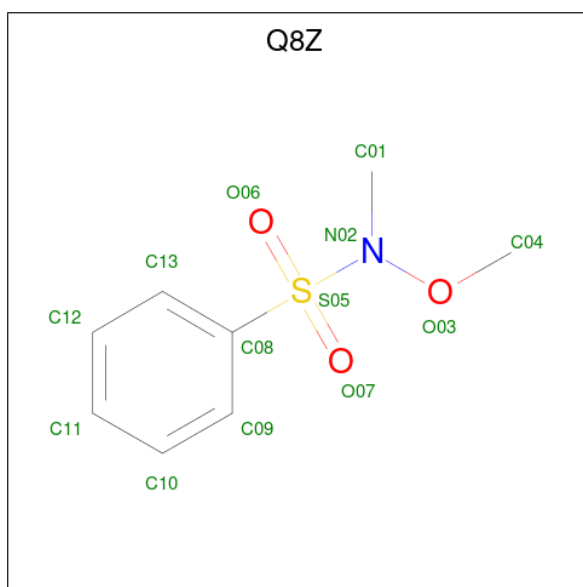
Chain	Residue	Modelled	Actual	Comment	Reference
J	2058	GLY	-	expression tag	UNP Q6P2Q9
J	2059	PRO	-	expression tag	UNP Q6P2Q9
J	2060	LEU	-	expression tag	UNP Q6P2Q9
J	2061	GLY	-	expression tag	UNP Q6P2Q9
J	2062	SER	-	expression tag	UNP Q6P2Q9
J	2063	MET	-	expression tag	UNP Q6P2Q9

- Molecule 3 is 1,2-ETHANEDIOL (CCD ID: EDO) (formula: C<sub>2</sub>H<sub>6</sub>O<sub>2</sub>).



Mol	Chain	Residues	Atoms	ZeroOcc	AltConf
3	B	1	Total C O 4 2 2	0	0
3	B	1	Total C O 4 2 2	0	0
3	B	1	Total C O 4 2 2	0	0
3	B	1	Total C O 4 2 2	0	0
3	B	1	Total C O 4 2 2	0	0
3	B	1	Total C O 4 2 2	0	0
3	B	1	Total C O 4 2 2	0	0
3	B	1	Total C O 4 2 2	0	0
3	J	1	Total C O 4 2 2	0	0
3	J	1	Total C O 4 2 2	0	0

- Molecule 4 is {N}-methoxy- {N}-methyl-benzenesulfonamide (CCD ID: Q8Z) (formula: C<sub>8</sub>H<sub>11</sub>NO<sub>3</sub>S) (labeled as "Ligand of Interest" by depositor).



Mol	Chain	Residues	Atoms					ZeroOcc	AltConf
			Total	C	N	O	S		
4	B	1	13	8	1	3	1	0	0

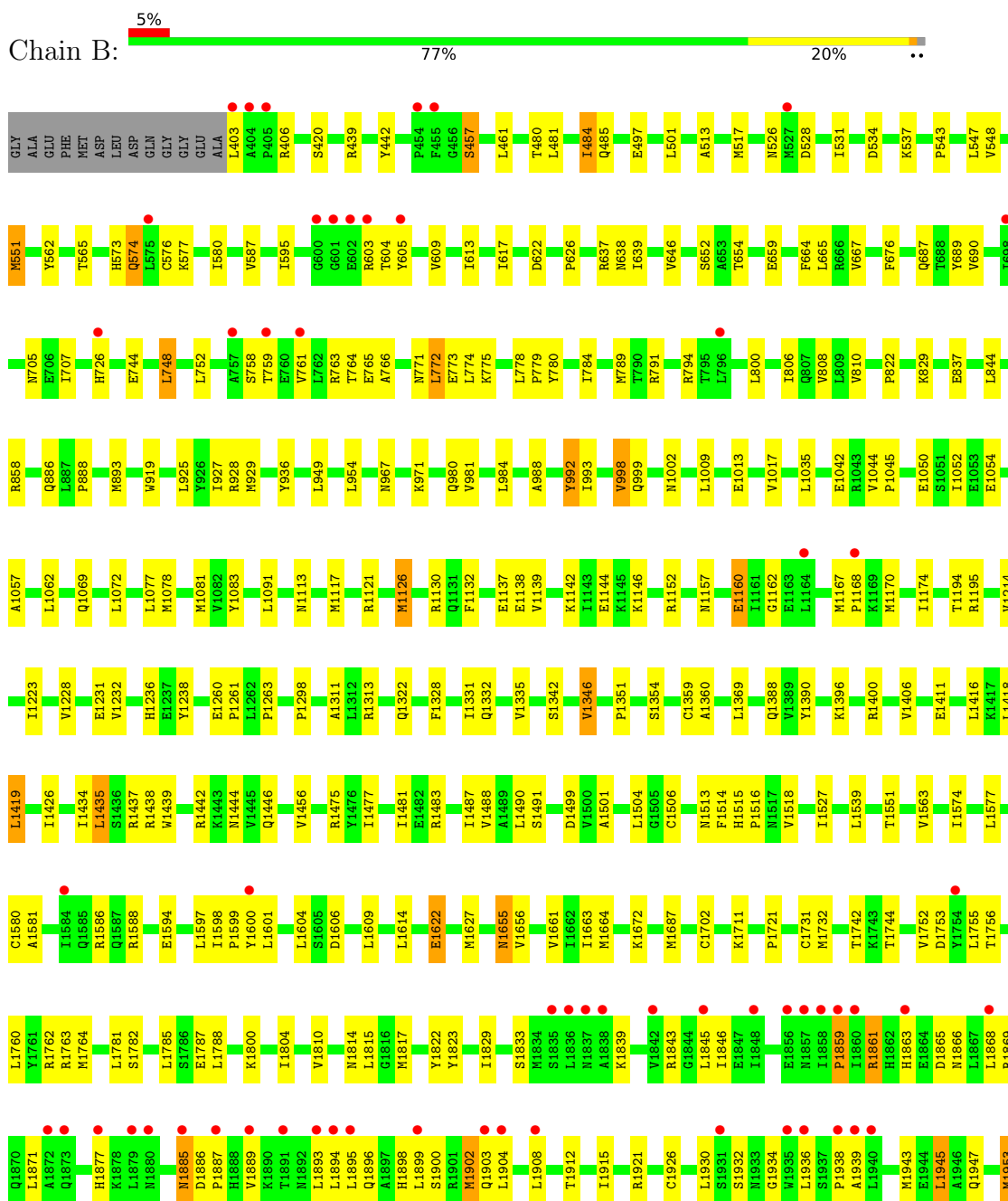
- Molecule 5 is water.

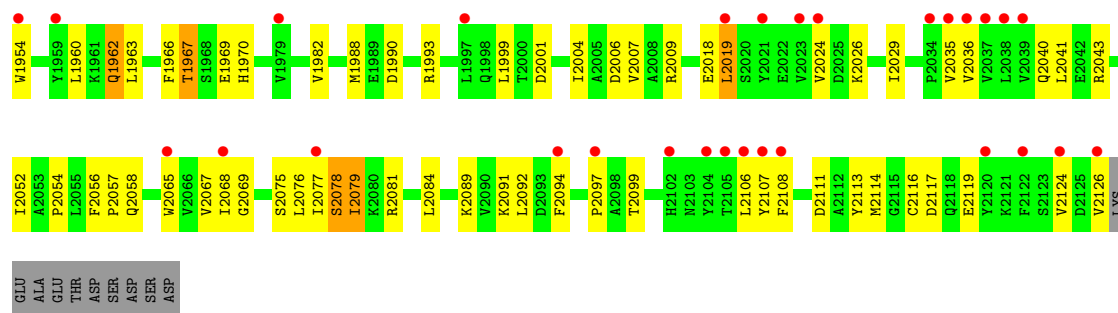
Mol	Chain	Residues	Atoms		ZeroOcc	AltConf
5	B	277	Total	O	0	0
			277	277		
5	J	48	Total	O	0	0
			48	48		

### 3 Residue-property plots

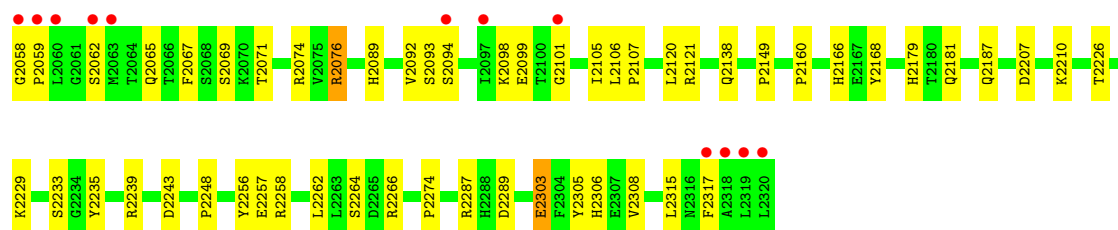
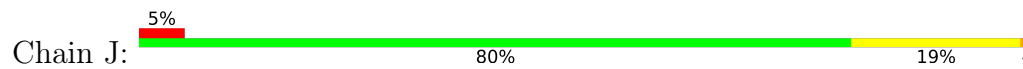
These plots are drawn for all protein, RNA, DNA and oligosaccharide chains in the entry. The first graphic for a chain summarises the proportions of the various outlier classes displayed in the second graphic. The second graphic shows the sequence view annotated by issues in geometry and electron density. Residues are color-coded according to the number of geometric quality criteria for which they contain at least one outlier: green = 0, yellow = 1, orange = 2 and red = 3 or more. A red dot above a residue indicates a poor fit to the electron density ( $RSRZ > 2$ ). Stretches of 2 or more consecutive residues without any outlier are shown as a green connector. Residues present in the sample, but not in the model, are shown in grey.

- Molecule 1: U5 small nuclear ribonucleoprotein 200 kDa helicase





- Molecule 2: Pre-mRNA-processing-splicing factor 8



## 4 Data and refinement statistics

Property	Value	Source
Space group	P 21 21 21	Depositor
Cell constants a, b, c, $\alpha$ , $\beta$ , $\gamma$	99.55Å 118.70Å 186.92Å 90.00° 90.00° 90.00°	Depositor
Resolution (Å)	48.25 – 2.42 48.25 – 2.42	Depositor EDS
% Data completeness (in resolution range)	99.9 (48.25-2.42) 99.9 (48.25-2.42)	Depositor EDS
$R_{merge}$	(Not available)	Depositor
$R_{sym}$	(Not available)	Depositor
$\langle I/\sigma(I) \rangle$ <sup>1</sup>	1.13 (at 2.42Å)	Xtrriage
Refinement program	PHENIX 1.20_4459	Depositor
R, $R_{free}$	0.213 , 0.275 0.213 , 0.274	Depositor DCC
$R_{free}$ test set	2101 reflections (2.46%)	wwPDB-VP
Wilson B-factor (Å <sup>2</sup> )	50.9	Xtrriage
Anisotropy	0.271	Xtrriage
Bulk solvent $k_{sol}$ (e/Å <sup>3</sup> ), $B_{sol}$ (Å <sup>2</sup> )	0.29 , 41.9	EDS
L-test for twinning <sup>2</sup>	$\langle  L  \rangle = 0.50$ , $\langle L^2 \rangle = 0.33$	Xtrriage
Estimated twinning fraction	No twinning to report.	Xtrriage
$F_o, F_c$ correlation	0.95	EDS
Total number of atoms	16362	wwPDB-VP
Average B, all atoms (Å <sup>2</sup> )	73.0	wwPDB-VP

Xtrriage's analysis on translational NCS is as follows: *The largest off-origin peak in the Patterson function is 2.54% of the height of the origin peak. No significant pseudotranslation is detected.*

<sup>1</sup>Intensities estimated from amplitudes.

<sup>2</sup>Theoretical values of  $\langle |L| \rangle$ ,  $\langle L^2 \rangle$  for acentric reflections are 0.5, 0.333 respectively for untwinned datasets, and 0.375, 0.2 for perfectly twinned datasets.

## 5 Model quality

### 5.1 Standard geometry

Bond lengths and bond angles in the following residue types are not validated in this section: Q8Z, EDO

The Z score for a bond length (or angle) is the number of standard deviations the observed value is removed from the expected value. A bond length (or angle) with  $|Z| > 5$  is considered an outlier worth inspection. RMSZ is the root-mean-square of all Z scores of the bond lengths (or angles).

Mol	Chain	Bond lengths		Bond angles	
		RMSZ	# Z  >5	RMSZ	# Z  >5
1	B	0.24	0/14155	0.44	0/19180
2	J	0.25	0/2190	0.44	0/2981
All	All	0.24	0/16345	0.44	0/22161

There are no bond length outliers.

There are no bond angle outliers.

There are no chirality outliers.

There are no planarity outliers.

### 5.2 Too-close contacts

In the following table, the Non-H and H(model) columns list the number of non-hydrogen atoms and hydrogen atoms in the chain respectively. The H(added) column lists the number of hydrogen atoms added and optimized by MolProbity. The Clashes column lists the number of clashes within the asymmetric unit, whereas Symm-Clashes lists symmetry-related clashes.

Mol	Chain	Non-H	H(model)	H(added)	Clashes	Symm-Clashes
1	B	13861	0	14005	234	2
2	J	2123	0	2063	31	2
3	B	32	0	48	2	0
3	J	8	0	12	0	0
4	B	13	0	0	0	0
5	B	277	0	0	4	0
5	J	48	0	0	2	0
All	All	16362	0	16128	259	2

The all-atom clashscore is defined as the number of clashes found per 1000 atoms (including hydrogen atoms). The all-atom clashscore for this structure is 8.

All (259) close contacts within the same asymmetric unit are listed below, sorted by their clash magnitude.

Atom-1	Atom-2	Interatomic distance (Å)	Clash overlap (Å)
1:B:1896:GLN:HE22	1:B:1954:TRP:HH2	1.25	0.81
1:B:603:ARG:HD2	1:B:605:TYR:HD2	1.46	0.80
1:B:1672:LYS:HG3	1:B:1859:PRO:HB3	1.63	0.78
1:B:771:ASN:HB3	1:B:774:LEU:HB2	1.66	0.75
1:B:687:GLN:OE1	1:B:689:TYR:OH	2.04	0.75
1:B:1514:PHE:HB3	1:B:1518:VAL:HG21	1.69	0.75
1:B:403:LEU:HD23	1:B:954:LEU:HD11	1.68	0.74
1:B:1388:GLN:OE1	1:B:1655:ASN:ND2	2.21	0.73
1:B:1581:ALA:HA	1:B:1586:ARG:HG2	1.70	0.73
1:B:1351:PRO:HG3	1:B:1516:PRO:HA	1.71	0.72
2:J:2089:HIS:NE2	5:J:2501:HOH:O	2.23	0.72
1:B:1990:ASP:HA	1:B:1993:ARG:HB2	1.73	0.70
1:B:2035:VAL:HB	1:B:2094:PHE:O	1.92	0.70
1:B:1762:ARG:HH11	1:B:1762:ARG:HB3	1.55	0.70
1:B:2067:VAL:HB	1:B:2107:TYR:HB2	1.73	0.70
1:B:1846:ILE:HG23	1:B:1895:LEU:HD23	1.74	0.69
1:B:984:LEU:HD21	1:B:1002:ASN:HB2	1.75	0.68
1:B:1009:LEU:HD22	1:B:1013:GLU:HG2	1.76	0.67
1:B:1194:THR:HB	3:B:2204:EDO:H11	1.75	0.67
1:B:603:ARG:HD2	1:B:605:TYR:CD2	2.31	0.66
1:B:1934:GLY:O	1:B:2076:LEU:N	2.25	0.66
1:B:993:ILE:HD12	1:B:1091:LEU:HD23	1.77	0.65
1:B:1042:GLU:OE2	2:J:2071:THR:OG1	2.15	0.65
1:B:617:ILE:HG22	1:B:652:SER:HB3	1.78	0.65
1:B:2077:ILE:HD12	1:B:2094:PHE:CD2	2.33	0.64
1:B:1908:LEU:O	1:B:1912:THR:HG23	1.97	0.64
1:B:1513:ASN:OD1	5:B:2301:HOH:O	2.15	0.63
1:B:1130:ARG:NH1	1:B:1144:GLU:OE2	2.31	0.63
1:B:1438:ARG:HB2	1:B:1442:ARG:HH21	1.65	0.62
1:B:789:MET:O	1:B:794:ARG:NH1	2.33	0.62
1:B:1762:ARG:HB3	1:B:1762:ARG:NH1	2.15	0.62
1:B:984:LEU:HG	1:B:998:VAL:HG13	1.80	0.62
2:J:2264:SER:OG	2:J:2266:ARG:HG2	2.00	0.62
2:J:2093:SER:HB3	2:J:2226:THR:HG22	1.80	0.61
1:B:484:ILE:HD11	1:B:501:LEU:HD21	1.83	0.61
1:B:1298:PRO:HB3	1:B:1515:HIS:CG	2.36	0.61
1:B:1967:THR:HG22	1:B:1970:HIS:ND1	2.16	0.60
1:B:690:VAL:HG11	1:B:707:ILE:HD13	1.83	0.60
2:J:2243:ASP:HB3	2:J:2248:PRO:HB3	1.82	0.60
1:B:1419:LEU:HD22	1:B:1444:ASN:HB3	1.84	0.60

*Continued on next page...*

*Continued from previous page...*

Atom-1	Atom-2	Interatomic distance (Å)	Clash overlap (Å)
1:B:1760:LEU:HD11	1:B:1764:MET:HE3	1.84	0.60
1:B:1126:MET:HE2	2:J:2315:LEU:HD12	1.84	0.59
1:B:1894:LEU:HD23	1:B:1915:ILE:HD12	1.83	0.58
1:B:2040:GLN:HG2	1:B:2089:LYS:HG2	1.85	0.58
1:B:1843:ARG:HB3	1:B:1877:HIS:CE1	2.39	0.58
1:B:1939:ALA:O	1:B:1943:MET:HG3	2.04	0.58
1:B:1042:GLU:O	2:J:2074:ARG:NH1	2.37	0.57
1:B:1877:HIS:HB2	1:B:1896:GLN:HE21	1.69	0.57
1:B:1551:THR:HG22	1:B:1588:ARG:HH22	1.70	0.57
1:B:705:ASN:OD1	1:B:829:LYS:NZ	2.37	0.57
1:B:1044:VAL:O	2:J:2074:ARG:NH2	2.35	0.57
1:B:1947:GLN:NE2	1:B:2113:TYR:O	2.38	0.57
1:B:1947:GLN:HB3	1:B:2114:MET:HG2	1.87	0.56
2:J:2235:TYR:O	2:J:2239:ARG:HG2	2.05	0.56
2:J:2306:HIS:ND1	2:J:2308:VAL:HG22	2.21	0.56
1:B:1967:THR:HG23	1:B:1969:GLU:H	1.70	0.56
1:B:988:ALA:HB2	1:B:998:VAL:HG21	1.87	0.56
1:B:595:ILE:HD12	1:B:992:TYR:HB2	1.86	0.56
1:B:654:THR:HG21	1:B:676:PHE:O	2.06	0.56
2:J:2207:ASP:HB3	2:J:2210:LYS:HB2	1.88	0.55
1:B:1438:ARG:HB2	1:B:1442:ARG:NH2	2.21	0.55
1:B:2029:ILE:HG22	1:B:2126:VAL:HG12	1.88	0.55
2:J:2106:LEU:HD12	2:J:2107:PRO:HD2	1.87	0.55
1:B:543:PRO:HD2	1:B:547:LEU:HD23	1.88	0.55
1:B:1953:MET:HE2	1:B:2114:MET:SD	2.47	0.55
1:B:1594:GLU:O	1:B:1598:ILE:HG13	2.06	0.55
1:B:513:ALA:HB1	1:B:613:ILE:HD13	1.88	0.55
1:B:2108:PHE:O	1:B:2117:ASP:HA	2.06	0.55
1:B:822:PRO:HB2	1:B:858:ARG:HG2	1.88	0.54
1:B:1346:VAL:HG13	1:B:1488:VAL:HG13	1.89	0.54
1:B:1804:ILE:HG12	1:B:1810:VAL:HG12	1.90	0.54
1:B:1893:LEU:HA	1:B:1896:GLN:HB2	1.90	0.54
1:B:1930:LEU:HD13	1:B:1938:PRO:HB2	1.89	0.54
1:B:1877:HIS:HB2	1:B:1896:GLN:NE2	2.22	0.54
1:B:2001:ASP:O	1:B:2004:ILE:HG13	2.07	0.54
2:J:2187:GLN:HB2	2:J:2256:TYR:OH	2.08	0.54
1:B:1475:ARG:HD2	1:B:1504:LEU:HA	1.91	0.54
1:B:1843:ARG:HG2	1:B:1877:HIS:HA	1.90	0.54
1:B:1732:MET:SD	1:B:1788:LEU:HD21	2.49	0.53
1:B:2043:ARG:NH2	1:B:2084:LEU:O	2.39	0.53
1:B:2099:THR:HG22	1:B:2126:VAL:HG23	1.89	0.53

*Continued on next page...*

*Continued from previous page...*

Atom-1	Atom-2	Interatomic distance (Å)	Clash overlap (Å)
1:B:2068:ILE:O	1:B:2077:ILE:HG12	2.09	0.53
1:B:497:GLU:HG3	5:B:2320:HOH:O	2.09	0.53
2:J:2179:HIS:HE1	2:J:2181:GLN:HG3	1.74	0.53
1:B:1113:ASN:O	1:B:1117:MET:HG3	2.08	0.53
1:B:1331:ILE:HD12	1:B:1354:SER:HB3	1.90	0.53
1:B:2019:LEU:HA	1:B:2041:LEU:HD23	1.91	0.53
1:B:1814:ASN:HA	1:B:1817:MET:HE3	1.91	0.53
1:B:1499:ASP:OD2	1:B:1763:ARG:NH1	2.38	0.52
1:B:1456:VAL:HG12	1:B:1491:SER:HB2	1.90	0.52
1:B:574:GLN:HG3	1:B:1238:TYR:OH	2.09	0.52
1:B:1601:LEU:HA	1:B:1604:LEU:HD23	1.92	0.52
1:B:1597:LEU:O	1:B:1600:TYR:HB2	2.10	0.52
2:J:2105:ILE:HD13	2:J:2262:LEU:HB2	1.92	0.52
1:B:2006:ASP:OD1	1:B:2009:ARG:NH2	2.42	0.52
1:B:1953:MET:SD	1:B:1962:GLN:HG2	2.49	0.52
1:B:1900:SER:HB2	1:B:1902:MET:SD	2.51	0.51
1:B:1963:LEU:HD22	1:B:2007:VAL:HG13	1.91	0.51
1:B:1170:MET:HA	1:B:1170:MET:HE2	1.91	0.51
1:B:517:MET:HE3	1:B:613:ILE:HD12	1.93	0.51
1:B:772:LEU:O	1:B:775:LYS:HB3	2.10	0.51
1:B:967:ASN:HB3	1:B:999:GLN:HB2	1.93	0.51
1:B:439:ARG:HD3	1:B:442:TYR:OH	2.10	0.51
1:B:639:ILE:HD11	1:B:646:VAL:HB	1.92	0.51
1:B:752:LEU:HD11	1:B:780:TYR:HA	1.92	0.51
1:B:1967:THR:HG22	1:B:1970:HIS:CE1	2.46	0.51
1:B:1042:GLU:HG3	2:J:2069:SER:O	2.11	0.51
1:B:573:HIS:HB3	1:B:577:LYS:HE2	1.93	0.51
1:B:420:SER:HB3	1:B:622:ASP:HA	1.92	0.51
1:B:1755:LEU:HD13	1:B:1785:LEU:HD22	1.93	0.51
1:B:1434:ILE:HD12	1:B:1823:TYR:HB2	1.92	0.50
1:B:1988:MET:HE3	1:B:1993:ARG:HG2	1.93	0.50
1:B:531:ILE:HD13	1:B:562:TYR:O	2.11	0.50
1:B:1138:GLU:H	1:B:1138:GLU:CD	2.18	0.50
1:B:1501:ALA:HB1	1:B:1506:CYS:HB2	1.93	0.50
1:B:484:ILE:HD11	1:B:501:LEU:HD11	1.94	0.50
1:B:1195:ARG:HD3	1:B:1260:GLU:OE2	2.12	0.50
2:J:2098:LYS:HD3	2:J:2258:ARG:O	2.12	0.50
1:B:1898:HIS:HD2	1:B:1899:LEU:HD12	1.77	0.49
1:B:480:THR:HG22	1:B:481:LEU:O	2.13	0.49
1:B:748:LEU:HD21	1:B:780:TYR:HB3	1.95	0.49
1:B:1753:ASP:O	1:B:1756:THR:OG1	2.19	0.49

*Continued on next page...*

*Continued from previous page...*

Atom-1	Atom-2	Interatomic distance (Å)	Clash overlap (Å)
1:B:1904:LEU:HD13	1:B:1912:THR:HG21	1.94	0.49
1:B:1231:GLU:HG3	1:B:1232:VAL:HG23	1.93	0.49
1:B:1539:LEU:HD22	1:B:1664:MET:HE3	1.95	0.49
1:B:534:ASP:HB2	1:B:1866:ASN:HD22	1.78	0.48
1:B:1515:HIS:HB3	1:B:1516:PRO:HD2	1.96	0.48
1:B:2018:GLU:O	1:B:2041:LEU:HA	2.12	0.48
1:B:1970:HIS:HE2	1:B:1999:LEU:HD21	1.78	0.48
1:B:1132:PHE:HE1	1:B:1214:VAL:HG11	1.79	0.48
1:B:893:MET:HG2	1:B:925:LEU:HB2	1.96	0.48
1:B:1045:PRO:HD3	2:J:2317:PHE:CD2	2.49	0.48
1:B:1861:ARG:HA	1:B:1861:ARG:HH11	1.77	0.48
1:B:1926:CYS:O	1:B:1930:LEU:HG	2.13	0.48
1:B:1360:ALA:HB2	1:B:1490:LEU:HD11	1.96	0.48
1:B:726:HIS:CE1	1:B:844:LEU:HD11	2.49	0.47
1:B:2077:ILE:HB	1:B:2094:PHE:CD1	2.49	0.47
1:B:971:LYS:HB2	1:B:980:GLN:HB3	1.97	0.47
1:B:1139:VAL:HG12	1:B:1167:MET:HE1	1.96	0.47
1:B:1563:VAL:HG12	1:B:1664:MET:HE2	1.97	0.47
1:B:981:VAL:HG12	5:B:2387:HOH:O	2.14	0.47
1:B:2054:PRO:HG2	3:B:2209:EDO:H22	1.97	0.47
2:J:2059:PRO:O	2:J:2062:SER:N	2.29	0.47
1:B:800:LEU:HB3	1:B:806:ILE:HG13	1.96	0.47
1:B:929:MET:HE2	1:B:949:LEU:HD13	1.96	0.47
1:B:1406:VAL:HB	1:B:1418:LEU:HD22	1.96	0.47
1:B:2065:TRP:CD1	1:B:2079:ILE:HD11	2.49	0.47
1:B:1868:LEU:HD22	1:B:1893:LEU:HB2	1.96	0.47
2:J:2076:ARG:HB3	2:J:2305:TYR:OH	2.15	0.47
1:B:2078:SER:OG	1:B:2092:LEU:HB3	2.15	0.47
2:J:2303:GLU:H	2:J:2303:GLU:CD	2.22	0.47
1:B:1866:ASN:O	1:B:1869:ARG:HB2	2.15	0.47
1:B:665:LEU:HB2	1:B:667:VAL:HG23	1.97	0.46
1:B:1411:GLU:HG2	1:B:2058:GLN:OE1	2.15	0.46
1:B:573:HIS:HA	1:B:576:CYS:HB3	1.97	0.46
1:B:791:ARG:HG2	1:B:794:ARG:NH2	2.31	0.46
1:B:1885:ASN:H	1:B:1889:VAL:HG21	1.80	0.46
1:B:547:LEU:O	1:B:551:MET:HG2	2.15	0.46
1:B:1815:LEU:HG	1:B:1829:ILE:HG22	1.97	0.46
1:B:2076:LEU:HD21	1:B:2079:ILE:HB	1.97	0.46
1:B:1622:GLU:CD	1:B:1622:GLU:H	2.23	0.46
2:J:2058:GLY:N	5:J:2504:HOH:O	2.49	0.46
1:B:1050:GLU:CD	1:B:1050:GLU:H	2.24	0.46

*Continued on next page...*

*Continued from previous page...*

Atom-1	Atom-2	Interatomic distance (Å)	Clash overlap (Å)
1:B:1162:GLY:HA3	1:B:1168:PRO:HA	1.98	0.45
1:B:1390:TYR:HA	1:B:1426:ILE:HD13	1.99	0.45
1:B:1594:GLU:H	1:B:1594:GLU:CD	2.24	0.45
1:B:603:ARG:HG2	1:B:604:THR:H	1.82	0.45
1:B:886:GLN:O	1:B:888:PRO:HD3	2.16	0.45
1:B:1515:HIS:CD2	1:B:1721:PRO:HG3	2.52	0.45
1:B:1800:LYS:HE3	1:B:1800:LYS:HB2	1.80	0.45
1:B:1627:MET:HE3	1:B:1627:MET:HB3	1.78	0.45
1:B:1223:ILE:O	1:B:1236:HIS:HA	2.16	0.45
1:B:1551:THR:HG22	1:B:1588:ARG:NH2	2.31	0.45
1:B:2068:ILE:HD12	1:B:2092:LEU:HD22	1.97	0.45
1:B:2114:MET:HE2	1:B:2114:MET:HB3	1.85	0.45
1:B:1157:ASN:ND2	1:B:1160:GLU:OE1	2.50	0.45
1:B:1456:VAL:CG1	1:B:1491:SER:HB2	2.46	0.45
1:B:637:ARG:HD2	1:B:919:TRP:HA	1.99	0.44
1:B:1331:ILE:O	1:B:1335:VAL:HG22	2.18	0.44
1:B:1663:ILE:HG23	1:B:1687:MET:HE1	1.99	0.44
1:B:1311:ALA:HA	1:B:1313:ARG:NH1	2.31	0.44
1:B:2065:TRP:HD1	1:B:2079:ILE:HD11	1.81	0.44
1:B:2065:TRP:CZ3	1:B:2111:ASP:HB3	2.53	0.44
1:B:1577:LEU:HD23	1:B:1577:LEU:HA	1.78	0.44
2:J:2067:PHE:CE2	2:J:2069:SER:HA	2.53	0.44
1:B:1077:LEU:HD23	1:B:1077:LEU:HA	1.79	0.44
1:B:2106:LEU:O	1:B:2119:GLU:HA	2.18	0.44
1:B:526:ASN:HB2	1:B:528:ASP:OD1	2.18	0.43
1:B:1527:ILE:O	1:B:1711:LYS:HE3	2.18	0.43
1:B:1903:GLN:HG2	1:B:1904:LEU:N	2.33	0.43
1:B:928:ARG:HB3	1:B:936:TYR:CE2	2.54	0.43
1:B:1661:VAL:O	1:B:1702:CYS:HA	2.17	0.43
1:B:551:MET:HE2	1:B:551:MET:HA	2.00	0.43
2:J:2149:PRO:HD3	2:J:2274:PRO:HG3	2.01	0.43
1:B:1396:LYS:O	1:B:1400:ARG:HB2	2.19	0.43
1:B:2006:ASP:HA	1:B:2009:ARG:HE	1.82	0.43
1:B:2026:LYS:HB3	1:B:2026:LYS:HE2	1.85	0.43
1:B:1050:GLU:HG2	1:B:1057:ALA:HB2	2.01	0.43
1:B:1868:LEU:HA	1:B:1871:LEU:HB2	2.01	0.43
1:B:1865:ASP:HA	1:B:1868:LEU:HD12	2.01	0.43
1:B:1069:GLN:HA	1:B:1121:ARG:NH2	2.33	0.42
1:B:605:TYR:O	1:B:609:VAL:HG23	2.18	0.42
2:J:2166:HIS:CE1	2:J:2168:TYR:HB2	2.54	0.42
1:B:1416:LEU:HD11	1:B:1442:ARG:NH1	2.35	0.42

*Continued on next page...*

*Continued from previous page...*

Atom-1	Atom-2	Interatomic distance (Å)	Clash overlap (Å)
1:B:1606:ASP:HB3	1:B:1609:LEU:HB3	2.02	0.42
1:B:1845:LEU:HD12	1:B:1945:LEU:HD12	2.01	0.42
1:B:1072:LEU:H	1:B:1078:MET:HE3	1.85	0.42
1:B:1298:PRO:HB3	1:B:1515:HIS:CD2	2.54	0.42
1:B:1962:GLN:NE2	1:B:2114:MET:O	2.46	0.42
1:B:2036:VAL:HG11	1:B:2091:LYS:HE2	2.02	0.42
1:B:2077:ILE:HD12	1:B:2094:PHE:CG	2.54	0.42
2:J:2092:VAL:HG22	2:J:2094:SER:HB3	2.02	0.42
2:J:2101:GLY:O	2:J:2138:GLN:HG3	2.19	0.42
1:B:1439:TRP:CD2	1:B:1477:ILE:HG12	2.54	0.42
2:J:2076:ARG:HH11	2:J:2121:ARG:HB2	1.85	0.42
2:J:2229:LYS:HG2	2:J:2257:GLU:HG3	2.01	0.42
2:J:2179:HIS:CE1	2:J:2181:GLN:HG3	2.54	0.42
1:B:664:PHE:HB2	1:B:927:ILE:HD13	2.00	0.42
1:B:784:ILE:HA	1:B:810:VAL:O	2.20	0.42
1:B:1885:ASN:HB2	1:B:1886:ASP:H	1.66	0.42
1:B:461:LEU:HD23	1:B:481:LEU:O	2.20	0.41
1:B:548:VAL:HG13	1:B:587:VAL:HG12	2.03	0.41
1:B:1439:TRP:O	1:B:1446:GLN:NE2	2.48	0.41
1:B:1598:ILE:N	1:B:1599:PRO:HD2	2.35	0.41
1:B:774:LEU:O	1:B:778:LEU:HB2	2.19	0.41
1:B:837:GLU:HG2	1:B:1083:TYR:OH	2.20	0.41
1:B:1515:HIS:CE1	1:B:1721:PRO:HG3	2.56	0.41
1:B:1142:LYS:O	1:B:1146:LYS:HG2	2.20	0.41
1:B:1260:GLU:HA	1:B:1261:PRO:C	2.46	0.41
1:B:1138:GLU:O	1:B:1142:LYS:HG3	2.20	0.41
1:B:1419:LEU:HD12	1:B:1435:LEU:HD23	2.02	0.41
1:B:1437:ARG:O	1:B:1742:THR:HG21	2.20	0.41
1:B:1228:VAL:CG2	1:B:1263:PRO:HB2	2.51	0.41
1:B:1335:VAL:HG21	1:B:1359:CYS:SG	2.60	0.41
1:B:2065:TRP:NE1	1:B:2081:ARG:HG2	2.36	0.41
1:B:1481:ILE:HG13	1:B:1483:ARG:H	1.86	0.41
1:B:1515:HIS:NE2	1:B:1721:PRO:HG3	2.36	0.41
1:B:1815:LEU:HD11	1:B:1833:SER:HB2	2.03	0.41
1:B:1866:ASN:HA	1:B:1869:ARG:HD3	2.03	0.41
1:B:2077:ILE:HB	1:B:2094:PHE:CE1	2.56	0.41
1:B:577:LYS:O	1:B:580:ILE:HB	2.20	0.41
1:B:1328:PHE:HB3	1:B:1332:GLN:HB2	2.03	0.41
1:B:1369:LEU:HD23	1:B:1369:LEU:HA	1.92	0.41
1:B:406:ARG:HA	1:B:406:ARG:CZ	2.51	0.40
1:B:1861:ARG:HB2	5:B:2375:HOH:O	2.20	0.40

*Continued on next page...*

Continued from previous page...

Atom-1	Atom-2	Interatomic distance (Å)	Clash overlap (Å)
1:B:2056:PHE:HE2	1:B:2058:GLN:HG2	1.86	0.40
1:B:949:LEU:HD23	1:B:949:LEU:HA	1.93	0.40
1:B:1013:GLU:O	1:B:1017:VAL:HG23	2.21	0.40
2:J:2149:PRO:O	2:J:2160:PRO:HD3	2.21	0.40
1:B:442:TYR:CD2	1:B:707:ILE:HD11	2.57	0.40
1:B:1936:LEU:HD13	1:B:2069:GLY:HA3	2.03	0.40
1:B:626:PRO:HG3	1:B:893:MET:HA	2.03	0.40
1:B:766:ALA:HB1	1:B:779:PRO:HG3	2.02	0.40
1:B:1035:LEU:HD12	1:B:1035:LEU:HA	1.83	0.40
1:B:1062:LEU:HD22	1:B:1081:MET:HB2	2.03	0.40
1:B:1515:HIS:O	1:B:1518:VAL:HG22	2.21	0.40
1:B:1752:VAL:O	1:B:1756:THR:HG23	2.21	0.40
1:B:1822:TYR:O	1:B:1921:ARG:HD2	2.21	0.40
1:B:1871:LEU:HD23	1:B:1871:LEU:HA	1.92	0.40

All (2) symmetry-related close contacts are listed below. The label for Atom-2 includes the symmetry operator and encoded unit-cell translations to be applied.

Atom-1	Atom-2	Interatomic distance (Å)	Clash overlap (Å)
1:B:457:SER:OG	2:J:2099:GLU:O[1_545]	2.11	0.09
1:B:1782:SER:OG	2:J:2065:GLN:OE1[4_555]	2.16	0.04

## 5.3 Torsion angles [i](#)

### 5.3.1 Protein backbone [i](#)

In the following table, the Percentiles column shows the percent Ramachandran outliers of the chain as a percentile score with respect to all X-ray entries followed by that with respect to entries of similar resolution.

The Analysed column shows the number of residues for which the backbone conformation was analysed, and the total number of residues.

Mol	Chain	Analysed	Favoured	Allowed	Outliers	Percentiles
1	B	1722/1747 (99%)	1664 (97%)	54 (3%)	4 (0%)	43 57
2	J	261/263 (99%)	253 (97%)	8 (3%)	0	100 100
All	All	1983/2010 (99%)	1917 (97%)	62 (3%)	4 (0%)	43 57

All (4) Ramachandran outliers are listed below:

Mol	Chain	Res	Type
1	B	1887	PRO
1	B	2097	PRO
1	B	1859	PRO
1	B	2057	PRO

### 5.3.2 Protein sidechains [i](#)

In the following table, the Percentiles column shows the percent sidechain outliers of the chain as a percentile score with respect to all X-ray entries followed by that with respect to entries of similar resolution.

The Analysed column shows the number of residues for which the sidechain conformation was analysed, and the total number of residues.

Mol	Chain	Analysed	Rotameric	Outliers	Percentiles	
1	B	1543/1560 (99%)	1477 (96%)	66 (4%)	26	42
2	J	236/236 (100%)	230 (98%)	6 (2%)	42	62
All	All	1779/1796 (99%)	1707 (96%)	72 (4%)	28	45

All (72) residues with a non-rotameric sidechain are listed below:

Mol	Chain	Res	Type
1	B	457	SER
1	B	484	ILE
1	B	485	GLN
1	B	537	LYS
1	B	551	MET
1	B	565	THR
1	B	574	GLN
1	B	638	ASN
1	B	659	GLU
1	B	744	GLU
1	B	748	LEU
1	B	758	SER
1	B	759	THR
1	B	761	VAL
1	B	763	ARG
1	B	764	THR
1	B	765	GLU
1	B	772	LEU
1	B	773	GLU
1	B	808	VAL

*Continued on next page...*

*Continued from previous page...*

<b>Mol</b>	<b>Chain</b>	<b>Res</b>	<b>Type</b>
1	B	992	TYR
1	B	998	VAL
1	B	1052	ILE
1	B	1054	GLU
1	B	1126	MET
1	B	1137	GLU
1	B	1152	ARG
1	B	1160	GLU
1	B	1174	ILE
1	B	1322	GLN
1	B	1342	SER
1	B	1346	VAL
1	B	1419	LEU
1	B	1435	LEU
1	B	1487	ILE
1	B	1574	ILE
1	B	1580	CYS
1	B	1614	LEU
1	B	1622	GLU
1	B	1655	ASN
1	B	1656	VAL
1	B	1731	CYS
1	B	1744	THR
1	B	1781	LEU
1	B	1787	GLU
1	B	1839	LYS
1	B	1861	ARG
1	B	1863	HIS
1	B	1885	ASN
1	B	1902	MET
1	B	1932	SER
1	B	1945	LEU
1	B	1953	MET
1	B	1960	LEU
1	B	1962	GLN
1	B	1966	PHE
1	B	1967	THR
1	B	1982	VAL
1	B	2019	LEU
1	B	2024	VAL
1	B	2052	ILE
1	B	2075	SER

*Continued on next page...*

*Continued from previous page...*

Mol	Chain	Res	Type
1	B	2078	SER
1	B	2079	ILE
1	B	2116	CYS
1	B	2124	VAL
2	J	2076	ARG
2	J	2120	LEU
2	J	2233	SER
2	J	2287	ARG
2	J	2289	ASP
2	J	2303	GLU

Sometimes sidechains can be flipped to improve hydrogen bonding and reduce clashes. All (15) such sidechains are listed below:

Mol	Chain	Res	Type
1	B	807	GLN
1	B	1175	HIS
1	B	1305	GLN
1	B	1536	GLN
1	B	1548	HIS
1	B	1667	GLN
1	B	1798	GLN
1	B	1877	HIS
1	B	1881	ASN
1	B	1896	GLN
1	B	1998	GLN
1	B	2003	GLN
2	J	2089	HIS
2	J	2158	HIS
2	J	2288	HIS

### 5.3.3 RNA [i](#)

There are no RNA molecules in this entry.

## 5.4 Non-standard residues in protein, DNA, RNA chains [i](#)

There are no non-standard protein/DNA/RNA residues in this entry.

## 5.5 Carbohydrates [i](#)

There are no oligosaccharides in this entry.

## 5.6 Ligand geometry [i](#)

11 ligands are modelled in this entry.

In the following table, the Counts columns list the number of bonds (or angles) for which Mogul statistics could be retrieved, the number of bonds (or angles) that are observed in the model and the number of bonds (or angles) that are defined in the Chemical Component Dictionary. The Link column lists molecule types, if any, to which the group is linked. The Z score for a bond length (or angle) is the number of standard deviations the observed value is removed from the expected value. A bond length (or angle) with  $|Z| > 2$  is considered an outlier worth inspection. RMSZ is the root-mean-square of all Z scores of the bond lengths (or angles).

Mol	Type	Chain	Res	Link	Bond lengths			Bond angles		
					Counts	RMSZ	# Z  > 2	Counts	RMSZ	# Z  > 2
4	Q8Z	B	2202	-	13,13,13	1.73	3 (23%)	16,18,18	3.28	3 (18%)
3	EDO	B	2204	-	3,3,3	0.49	0	2,2,2	0.26	0
3	EDO	B	2207	-	3,3,3	0.41	0	2,2,2	0.44	0
3	EDO	J	2401	-	3,3,3	0.51	0	2,2,2	0.40	0
3	EDO	J	2402	-	3,3,3	0.40	0	2,2,2	0.62	0
3	EDO	B	2208	-	3,3,3	0.48	0	2,2,2	0.30	0
3	EDO	B	2205	-	3,3,3	0.46	0	2,2,2	0.43	0
3	EDO	B	2209	-	3,3,3	0.48	0	2,2,2	0.59	0
3	EDO	B	2201	-	3,3,3	0.43	0	2,2,2	0.78	0
3	EDO	B	2203	-	3,3,3	0.46	0	2,2,2	0.52	0
3	EDO	B	2206	-	3,3,3	0.43	0	2,2,2	0.62	0

In the following table, the Chirals column lists the number of chiral outliers, the number of chiral centers analysed, the number of these observed in the model and the number defined in the Chemical Component Dictionary. Similar counts are reported in the Torsion and Rings columns. '-' means no outliers of that kind were identified.

Mol	Type	Chain	Res	Link	Chirals	Torsions	Rings
4	Q8Z	B	2202	-	-	5/12/14/14	0/1/1/1
3	EDO	B	2204	-	-	1/1/1/1	-
3	EDO	B	2207	-	-	0/1/1/1	-
3	EDO	J	2401	-	-	0/1/1/1	-
3	EDO	J	2402	-	-	0/1/1/1	-
3	EDO	B	2208	-	-	1/1/1/1	-
3	EDO	B	2205	-	-	1/1/1/1	-
3	EDO	B	2209	-	-	1/1/1/1	-

*Continued on next page...*

Continued from previous page...

Mol	Type	Chain	Res	Link	Chirals	Torsions	Rings
3	EDO	B	2201	-	-	1/1/1/1	-
3	EDO	B	2203	-	-	1/1/1/1	-
3	EDO	B	2206	-	-	1/1/1/1	-

All (3) bond length outliers are listed below:

Mol	Chain	Res	Type	Atoms	Z	Observed(Å)	Ideal(Å)
4	B	2202	Q8Z	C08-S05	3.83	1.81	1.76
4	B	2202	Q8Z	O06-S05	3.31	1.47	1.43
4	B	2202	Q8Z	O07-S05	3.29	1.47	1.43

All (3) bond angle outliers are listed below:

Mol	Chain	Res	Type	Atoms	Z	Observed(°)	Ideal(°)
4	B	2202	Q8Z	O07-S05-O06	-11.92	100.99	119.59
4	B	2202	Q8Z	O06-S05-C08	4.04	113.13	108.10
4	B	2202	Q8Z	O03-N02-C01	2.36	118.04	114.33

There are no chirality outliers.

All (12) torsion outliers are listed below:

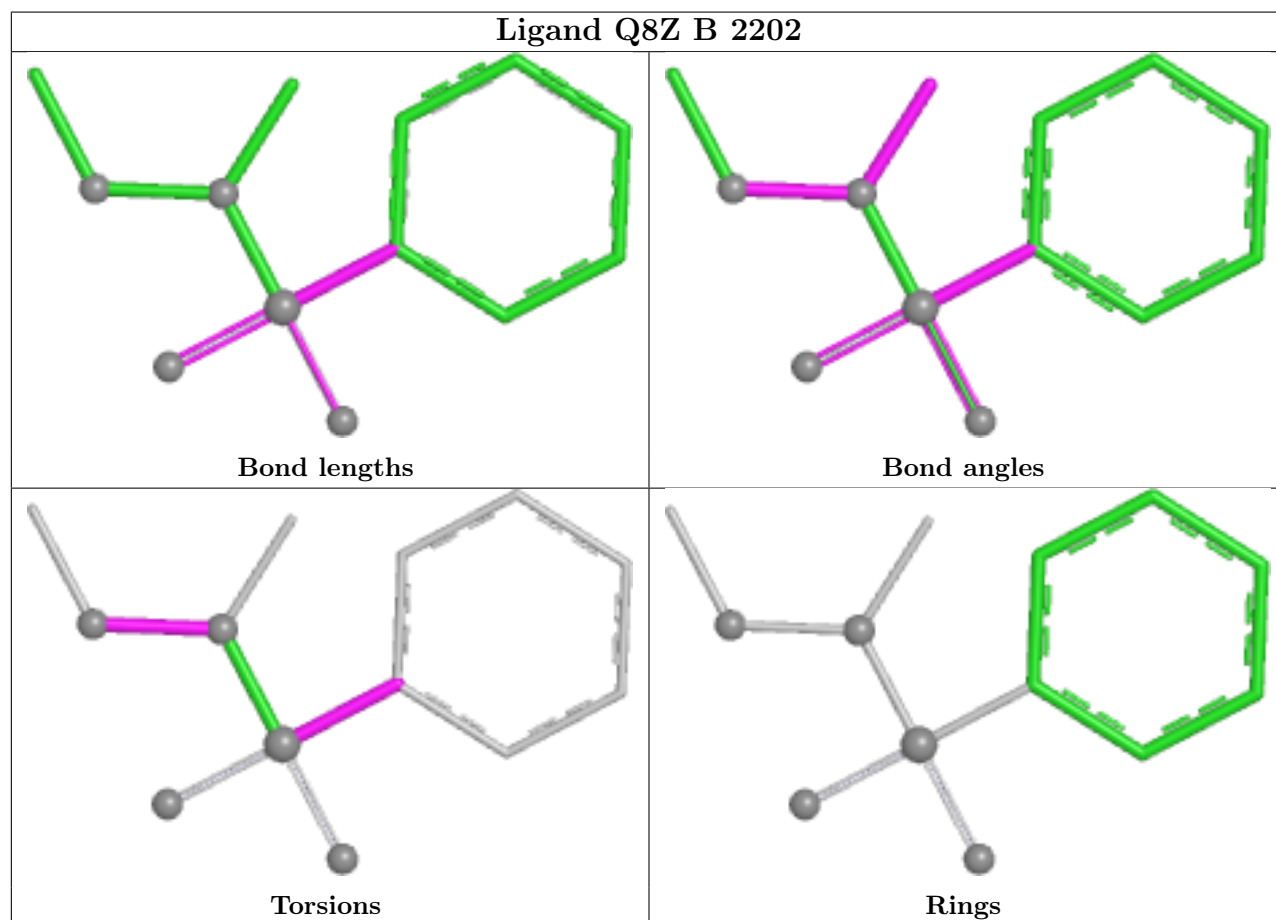
Mol	Chain	Res	Type	Atoms
4	B	2202	Q8Z	C13-C08-S05-N02
4	B	2202	Q8Z	C09-C08-S05-N02
4	B	2202	Q8Z	C01-N02-O03-C04
4	B	2202	Q8Z	C13-C08-S05-O06
4	B	2202	Q8Z	C09-C08-S05-O06
3	B	2204	EDO	O1-C1-C2-O2
3	B	2205	EDO	O1-C1-C2-O2
3	B	2208	EDO	O1-C1-C2-O2
3	B	2203	EDO	O1-C1-C2-O2
3	B	2209	EDO	O1-C1-C2-O2
3	B	2201	EDO	O1-C1-C2-O2
3	B	2206	EDO	O1-C1-C2-O2

There are no ring outliers.

2 monomers are involved in 2 short contacts:

Mol	Chain	Res	Type	Clashes	Symm-Clashes
3	B	2204	EDO	1	0
3	B	2209	EDO	1	0

The following is a two-dimensional graphical depiction of Mogul quality analysis of bond lengths, bond angles, torsion angles, and ring geometry for all instances of the Ligand of Interest. In addition, ligands with molecular weight > 250 and outliers as shown on the validation Tables will also be included. For torsion angles, if less than 5% of the Mogul distribution of torsion angles is within 10 degrees of the torsion angle in question, then that torsion angle is considered an outlier. Any bond that is central to one or more torsion angles identified as an outlier by Mogul will be highlighted in the graph. For rings, the root-mean-square deviation (RMSD) between the ring in question and similar rings identified by Mogul is calculated over all ring torsion angles. If the average RMSD is greater than 60 degrees and the minimal RMSD between the ring in question and any Mogul-identified rings is also greater than 60 degrees, then that ring is considered an outlier. The outliers are highlighted in purple. The color gray indicates Mogul did not find sufficient equivalents in the CSD to analyse the geometry.



## 5.7 Other polymers [i](#)

There are no such residues in this entry.

## 5.8 Polymer linkage issues [i](#)

There are no chain breaks in this entry.

## 6 Fit of model and data

### 6.1 Protein, DNA and RNA chains

In the following table, the column labelled ‘#RSRZ > 2’ contains the number (and percentage) of RSRZ outliers, followed by percent RSRZ outliers for the chain as percentile scores relative to all X-ray entries and entries of similar resolution. The OWAB column contains the minimum, median, 95<sup>th</sup> percentile and maximum values of the occupancy-weighted average B-factor per residue. The column labelled ‘Q < 0.9’ lists the number of (and percentage) of residues with an average occupancy less than 0.9.

Mol	Chain	Analysed	<RSRZ>	#RSRZ>2	OWAB(Å <sup>2</sup> )	Q<0.9
1	B	1724/1747 (98%)	0.24	88 (5%) 33 30	33, 64, 149, 246	0
2	J	263/263 (100%)	-0.01	12 (4%) 37 33	38, 55, 130, 245	0
All	All	1987/2010 (98%)	0.21	100 (5%) 34 30	33, 63, 149, 246	0

All (100) RSRZ outliers are listed below:

Mol	Chain	Res	Type	RSRZ
1	B	1893	LEU	5.3
1	B	1836	LEU	4.9
1	B	1868	LEU	4.7
1	B	1895	LEU	4.3
2	J	2060	LEU	4.2
1	B	404	ALA	4.2
1	B	2035	VAL	3.9
1	B	2102	HIS	3.8
1	B	454	PRO	3.8
1	B	2036	VAL	3.6
1	B	1940	LEU	3.6
1	B	1894	LEU	3.6
2	J	2097	ILE	3.6
1	B	1860	ILE	3.6
1	B	1880	ASN	3.6
1	B	1872	ALA	3.5
1	B	2023	VAL	3.5
1	B	2068	ILE	3.5
2	J	2058	GLY	3.4
1	B	403	LEU	3.3
2	J	2101	GLY	3.2
1	B	455	PHE	3.2
1	B	602	GLU	3.1
1	B	761	VAL	3.1

*Continued on next page...*

*Continued from previous page...*

<b>Mol</b>	<b>Chain</b>	<b>Res</b>	<b>Type</b>	<b>RSRZ</b>
1	B	726	HIS	3.1
1	B	1877	HIS	3.1
1	B	2038	LEU	3.1
1	B	2124	VAL	3.0
1	B	1904	LEU	3.0
2	J	2318	ALA	2.9
1	B	605	TYR	2.9
1	B	405	PRO	2.8
1	B	2106	LEU	2.8
1	B	601	GLY	2.8
1	B	2037	VAL	2.8
1	B	1939	ALA	2.7
1	B	698	ILE	2.7
1	B	1857	ASN	2.7
1	B	2104	TYR	2.7
1	B	575	LEU	2.7
1	B	1879	LEU	2.7
1	B	1936	LEU	2.7
1	B	2108	PHE	2.7
1	B	1863	HIS	2.7
1	B	2122	PHE	2.6
1	B	1959	TYR	2.6
1	B	2107	TYR	2.6
1	B	1903	GLN	2.6
1	B	1979	VAL	2.6
1	B	2039	VAL	2.6
1	B	2097	PRO	2.5
1	B	1873	GLN	2.5
1	B	2021	TYR	2.5
1	B	1842	VAL	2.5
1	B	1838	ALA	2.5
1	B	1889	VAL	2.5
1	B	1997	LEU	2.4
2	J	2320	LEU	2.4
2	J	2062	SER	2.4
2	J	2059	PRO	2.4
1	B	1584	ILE	2.4
1	B	2120	TYR	2.4
1	B	2024	VAL	2.4
1	B	1938	PRO	2.4
1	B	1845	LEU	2.4
1	B	1837	ASN	2.4

*Continued on next page...*

*Continued from previous page...*

Mol	Chain	Res	Type	RSRZ
1	B	1931	SER	2.3
1	B	2019	LEU	2.3
1	B	2077	ILE	2.3
1	B	1908	LEU	2.3
1	B	1885	ASN	2.3
1	B	600	GLY	2.3
1	B	1954	TRP	2.3
1	B	2065	TRP	2.3
1	B	1891	THR	2.3
1	B	1858	ILE	2.3
1	B	1887	PRO	2.3
1	B	1600	TYR	2.3
1	B	2105	THR	2.2
1	B	2094	PHE	2.2
1	B	527	MET	2.2
1	B	796	LEU	2.2
1	B	1835	SER	2.2
1	B	1859	PRO	2.2
1	B	2126	VAL	2.2
1	B	759	THR	2.2
1	B	1164	LEU	2.1
1	B	603	ARG	2.1
2	J	2063	MET	2.1
2	J	2319	LEU	2.1
1	B	1848	ILE	2.1
1	B	1856	GLU	2.1
1	B	2034	PRO	2.1
1	B	1899	LEU	2.1
2	J	2317	PHE	2.0
1	B	757	ALA	2.0
1	B	1935	TRP	2.0
1	B	1168	PRO	2.0
1	B	1754	TYR	2.0
2	J	2094	SER	2.0

## 6.2 Non-standard residues in protein, DNA, RNA chains

There are no non-standard protein/DNA/RNA residues in this entry.

### 6.3 Carbohydrates [i](#)

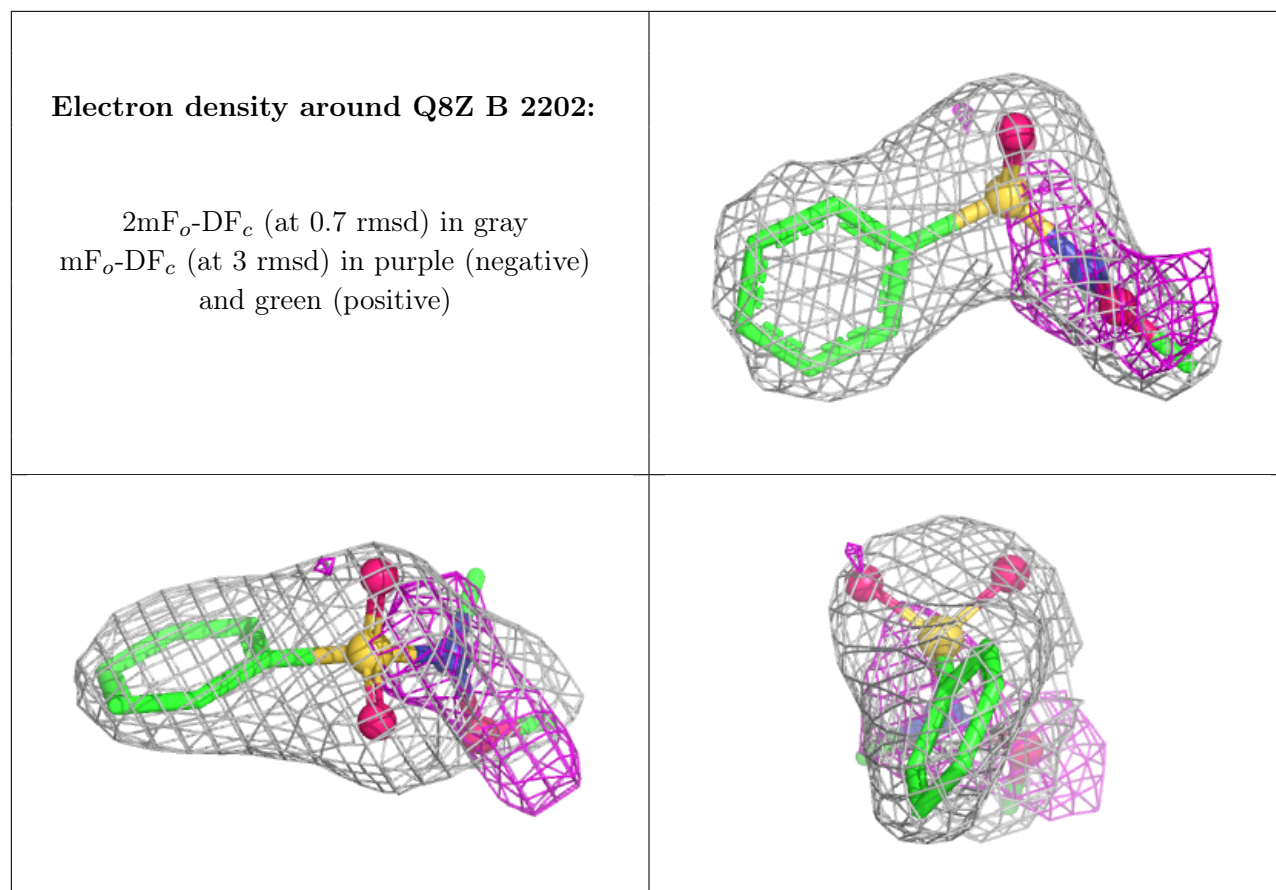
There are no oligosaccharides in this entry.

### 6.4 Ligands [i](#)

In the following table, the Atoms column lists the number of modelled atoms in the group and the number defined in the chemical component dictionary. The B-factors column lists the minimum, median, 95<sup>th</sup> percentile and maximum values of B factors of atoms in the group. The column labelled 'Q< 0.9' lists the number of atoms with occupancy less than 0.9.

Mol	Type	Chain	Res	Atoms	RSCC	RSR	B-factors( $\text{\AA}^2$ )	Q<0.9
3	EDO	J	2402	4/4	0.66	0.16	83,87,101,103	0
3	EDO	B	2209	4/4	0.73	0.21	93,98,108,116	0
3	EDO	B	2205	4/4	0.73	0.13	64,67,71,74	0
3	EDO	B	2203	4/4	0.80	0.17	58,59,60,62	0
3	EDO	B	2204	4/4	0.81	0.14	57,59,61,68	0
3	EDO	B	2207	4/4	0.82	0.18	65,67,69,71	0
3	EDO	J	2401	4/4	0.84	0.18	59,67,68,90	0
3	EDO	B	2201	4/4	0.86	0.16	44,45,56,56	0
3	EDO	B	2206	4/4	0.89	0.08	59,61,62,66	0
3	EDO	B	2208	4/4	0.91	0.08	51,51,52,58	0
4	Q8Z	B	2202	13/13	0.93	0.11	47,56,63,64	0

The following is a graphical depiction of the model fit to experimental electron density of all instances of the Ligand of Interest. In addition, ligands with molecular weight > 250 and outliers as shown on the geometry validation Tables will also be included. Each fit is shown from different orientation to approximate a three-dimensional view.



## 6.5 Other polymers [i](#)

There are no such residues in this entry.