



Full wwPDB X-ray Structure Validation Report ⓘ

Mar 10, 2026 – 04:07 AM UTC

PDB ID : 2BEV / pdb_00002bev
Title : Reactivity modulation of human branched-chain alpha-ketoacid dehydrogenase by an internal molecular switch
Authors : Machius, M.; Wynn, R.M.; Chuang, J.L.; Tomchick, D.R.; Brautigam, C.A.; Chuang, D.T.
Deposited on : 2004-11-30
Resolution : 1.80 Å(reported)

This is a Full wwPDB X-ray Structure Validation Report for a publicly released PDB entry.

We welcome your comments at validation@mail.wwpdb.org

A user guide is available at

<https://www.wwpdb.org/validation/2017/XrayValidationReportHelp>

with specific help available everywhere you see the ⓘ symbol.

The types of validation reports are described at

<http://www.wwpdb.org/validation/2017/FAQs#types>.

The following versions of software and data (see [references ⓘ](#)) were used in the production of this report:

MolProbity : 4-5-2 with Phenix2.0
Mogul : 2022.3.0, CSD as543be (2022)
Xtrriage (Phenix) : 2.0
EDS : 3.0
Buster-report : wwPDB partial adaption of 1.1.7 (2018)
Percentile statistics : 20250101.v01 (using entries in the PDB archive January 1st 2025)
CCP4 : 9.0.010 (Gargrove)
Density-Fitness : 1.0.12
Ideal geometry (proteins) : Engh & Huber (2001)
Ideal geometry (DNA, RNA) : Parkinson et al. (1996)
Validation Pipeline (wwPDB-VP) : 2.49

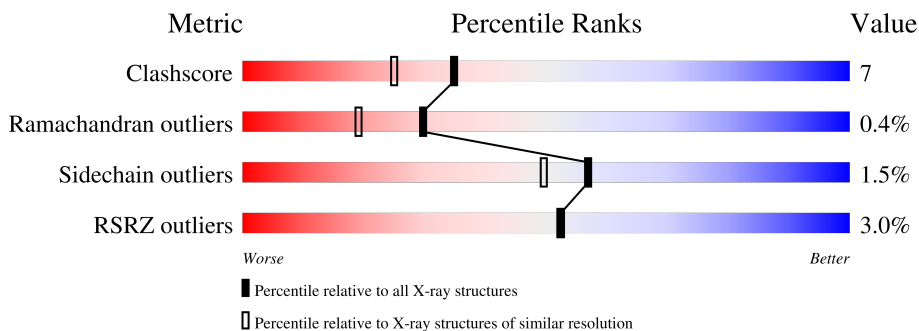
1 Overall quality at a glance

The following experimental techniques were used to determine the structure:

X-RAY DIFFRACTION

The reported resolution of this entry is 1.80 Å.

Percentile scores (ranging between 0-100) for global validation metrics of the entry are shown in the following graphic. The table shows the number of entries on which the scores are based.



Metric	Whole archive (#Entries)	Similar resolution (#Entries, resolution range(Å))
Clashscore	190562	8479 (1.80-1.80)
Ramachandran outliers	187476	8391 (1.80-1.80)
Sidechain outliers	187428	8390 (1.80-1.80)
RSRZ outliers	180081	7663 (1.80-1.80)

The table below summarises the geometric issues observed across the polymeric chains and their fit to the electron density. The red, orange, yellow and green segments of the lower bar indicate the fraction of residues that contain outliers for ≥ 3 , 2, 1 and 0 types of geometric quality criteria respectively. A grey segment represents the fraction of residues that are not modelled. The numeric value for each fraction is indicated below the corresponding segment, with a dot representing fractions $\leq 5\%$. The upper red bar (where present) indicates the fraction of residues that have poor fit to the electron density. The numeric value is given above the bar.

Mol	Chain	Length	Quality of chain
1	A	400	 5% 83% 12% ..
2	B	342	 93% 5% .
3	C	3	 33% 67% 33%

2 Entry composition

There are 9 unique types of molecules in this entry. The entry contains 6682 atoms, of which 0 are hydrogens and 0 are deuteriums.

In the tables below, the ZeroOcc column contains the number of atoms modelled with zero occupancy, the AltConf column contains the number of residues with at least one atom in alternate conformation and the Trace column contains the number of residues modelled with at most 2 atoms.

- Molecule 1 is a protein called 2-OXOISOVALERATE DEHYDROGENASE ALPHA SUB-UNIT.

Mol	Chain	Residues	Atoms					ZeroOcc	AltConf	Trace
			Total	C	N	O	S			
1	A	390	3237	2038	577	601	21	0	13	0

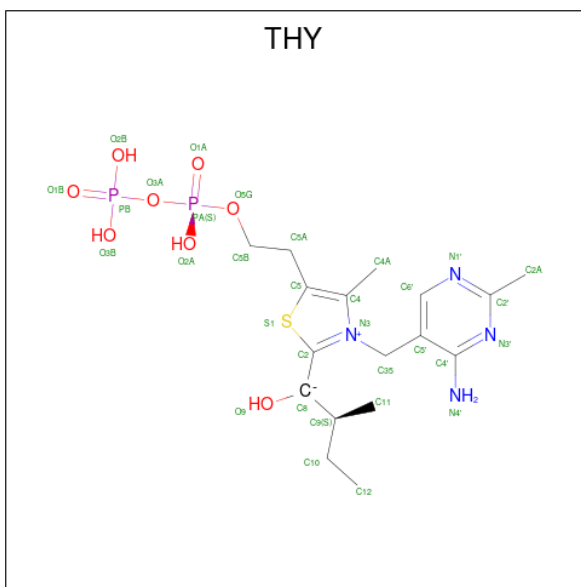
- Molecule 2 is a protein called 2-OXOISOVALERATE DEHYDROGENASE BETA SUB-UNIT.

Mol	Chain	Residues	Atoms					ZeroOcc	AltConf	Trace
			Total	C	N	O	S			
2	B	336	2675	1723	440	497	15	0	7	0

- Molecule 3 is a protein called PEPTIDE ALA-TYR-ARG.

Mol	Chain	Residues	Atoms				ZeroOcc	AltConf	Trace
			Total	C	N	O			
3	C	3	28	18	6	4	0	0	0

- Molecule 4 is C2-1-HYDROXY-2-METHYL-BUTYL-THIAMIN DIPHOSPHATE (CCD ID: THY) (formula: $C_{17}H_{28}N_4O_8P_2S$).



Mol	Chain	Residues	Atoms					ZeroOcc	AltConf	
			Total	C	N	O	P			S
4	A	1	32	17	4	8	2	1	0	0

- Molecule 5 is POTASSIUM ION (CCD ID: K) (formula: K).

Mol	Chain	Residues	Atoms		ZeroOcc	AltConf
			Total	K		
5	A	1	1	1	0	0
5	B	1	1	1	0	0

- Molecule 6 is MANGANESE (II) ION (CCD ID: MN) (formula: Mn).

Mol	Chain	Residues	Atoms		ZeroOcc	AltConf
			Total	Mn		
6	A	1	1	1	0	0

- Molecule 7 is CHLORIDE ION (CCD ID: CL) (formula: Cl).

Mol	Chain	Residues	Atoms		ZeroOcc	AltConf
			Total	Cl		
7	A	1	1	1	0	0
7	B	1	1	1	0	0

- Molecule 8 is GLYCEROL (CCD ID: GOL) (formula: C₃H₈O₃).



Mol	Chain	Residues	Atoms	ZeroOcc	AltConf
8	B	1	Total C O 6 3 3	0	0
8	B	1	Total C O 6 3 3	0	0

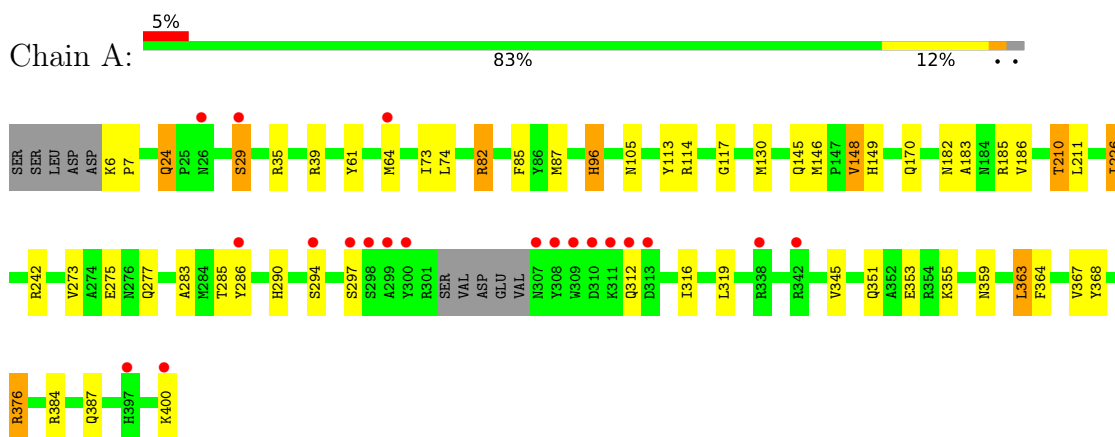
- Molecule 9 is water.

Mol	Chain	Residues	Atoms	ZeroOcc	AltConf
9	A	381	Total O 381 381	0	0
9	B	308	Total O 308 308	0	0
9	C	4	Total O 4 4	0	0

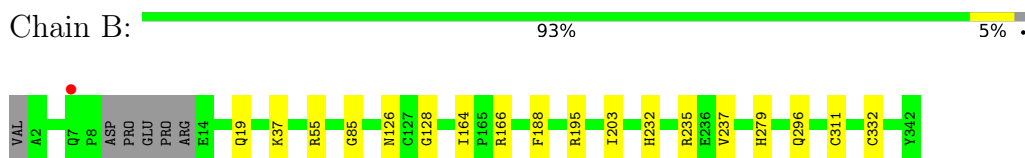
3 Residue-property plots [i](#)

These plots are drawn for all protein, RNA, DNA and oligosaccharide chains in the entry. The first graphic for a chain summarises the proportions of the various outlier classes displayed in the second graphic. The second graphic shows the sequence view annotated by issues in geometry and electron density. Residues are color-coded according to the number of geometric quality criteria for which they contain at least one outlier: green = 0, yellow = 1, orange = 2 and red = 3 or more. A red dot above a residue indicates a poor fit to the electron density ($RSRZ > 2$). Stretches of 2 or more consecutive residues without any outlier are shown as a green connector. Residues present in the sample, but not in the model, are shown in grey.

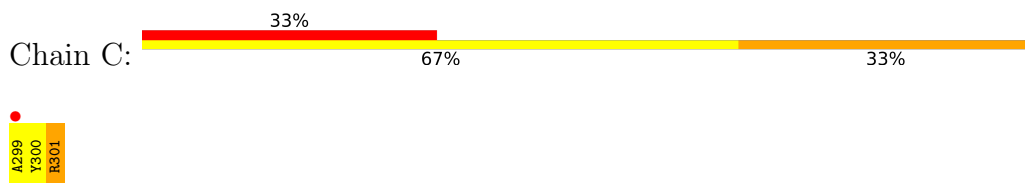
- Molecule 1: 2-OXOISOVALERATE DEHYDROGENASE ALPHA SUBUNIT



- Molecule 2: 2-OXOISOVALERATE DEHYDROGENASE BETA SUBUNIT



- Molecule 3: PEPTIDE ALA-TYR-ARG



4 Data and refinement statistics i

Property	Value	Source
Space group	P 31 2 1	Depositor
Cell constants a, b, c, α , β , γ	144.47Å 144.47Å 69.48Å 90.00° 90.00° 120.00°	Depositor
Resolution (Å)	30.00 – 1.80 30.00 – 1.80	Depositor EDS
% Data completeness (in resolution range)	100.0 (30.00-1.80) 99.9 (30.00-1.80)	Depositor EDS
R_{merge}	0.09	Depositor
R_{sym}	(Not available)	Depositor
$\langle I/\sigma(I) \rangle$ ¹	2.99 (at 1.80Å)	Xtrriage
Refinement program	REFMAC 5.2.0003	Depositor
R, R_{free}	0.138 , 0.170 (Not available) , (Not available)	Depositor DCC
R_{free} test set	No test flags present.	wwPDB-VP
Wilson B-factor (Å ²)	14.3	Xtrriage
Anisotropy	0.509	Xtrriage
Bulk solvent k_{sol} (e/Å ³), B_{sol} (Å ²)	0.38 , 50.9	EDS
L-test for twinning ²	$\langle L \rangle = 0.50$, $\langle L^2 \rangle = 0.33$	Xtrriage
Estimated twinning fraction	0.023 for -h,-k,l	Xtrriage
F_o, F_c correlation	0.96	EDS
Total number of atoms	6682	wwPDB-VP
Average B, all atoms (Å ²)	13.0	wwPDB-VP

Xtrriage's analysis on translational NCS is as follows: *The largest off-origin peak in the Patterson function is 3.36% of the height of the origin peak. No significant pseudotranslation is detected.*

¹Intensities estimated from amplitudes.

²Theoretical values of $\langle |L| \rangle$, $\langle L^2 \rangle$ for acentric reflections are 0.5, 0.333 respectively for untwinned datasets, and 0.375, 0.2 for perfectly twinned datasets.

5 Model quality

5.1 Standard geometry

Bond lengths and bond angles in the following residue types are not validated in this section: GOL, THY, K, CL, MN

The Z score for a bond length (or angle) is the number of standard deviations the observed value is removed from the expected value. A bond length (or angle) with $|Z| > 5$ is considered an outlier worth inspection. RMSZ is the root-mean-square of all Z scores of the bond lengths (or angles).

Mol	Chain	Bond lengths		Bond angles	
		RMSZ	# $ Z > 5$	RMSZ	# $ Z > 5$
1	A	1.02	3/3316 (0.1%)	0.98	4/4479 (0.1%)
2	B	1.02	0/2744	0.99	0/3728
3	C	0.72	0/28	0.82	0/36
All	All	1.02	3/6088 (0.0%)	0.99	4/8243 (0.0%)

All (3) bond length outliers are listed below:

Mol	Chain	Res	Type	Atoms	Z	Observed(Å)	Ideal(Å)
1	A	283	ALA	CA-CB	6.33	1.61	1.53
1	A	145	GLN	N-CA	5.22	1.51	1.45
1	A	82	ARG	CD-NE	-5.03	1.39	1.46

All (4) bond angle outliers are listed below:

Mol	Chain	Res	Type	Atoms	Z	Observed(°)	Ideal(°)
1	A	96	HIS	CB-CA-C	-5.87	101.62	110.90
1	A	367	VAL	N-CA-C	-5.68	105.19	110.53
1	A	183	ALA	N-CA-C	5.66	118.38	111.82
1	A	368	TYR	N-CA-C	-5.01	102.77	110.14

There are no chirality outliers.

There are no planarity outliers.

5.2 Too-close contacts

In the following table, the Non-H and H(model) columns list the number of non-hydrogen atoms and hydrogen atoms in the chain respectively. The H(added) column lists the number of hydrogen atoms added and optimized by MolProbity. The Clashes column lists the number of clashes within the asymmetric unit, whereas Symm-Clashes lists symmetry-related clashes.

Mol	Chain	Non-H	H(model)	H(added)	Clashes	Symm-Clashes
1	A	3237	0	3121	71	0
2	B	2675	0	2620	17	0
3	C	28	0	26	12	0
4	A	32	0	3	1	0
5	A	1	0	0	0	0
5	B	1	0	0	0	0
6	A	1	0	0	0	0
7	A	1	0	0	0	0
7	B	1	0	0	0	0
8	B	12	0	16	0	0
9	A	381	0	0	13	0
9	B	308	0	0	5	0
9	C	4	0	0	1	0
All	All	6682	0	5786	88	0

The all-atom clashscore is defined as the number of clashes found per 1000 atoms (including hydrogen atoms). The all-atom clashscore for this structure is 7.

All (88) close contacts within the same asymmetric unit are listed below, sorted by their clash magnitude.

Atom-1	Atom-2	Interatomic distance (Å)	Clash overlap (Å)
1:A:294:SER:HB3	3:C:300:TYR:CD1	1.62	1.35
1:A:146[A]:MET:HE3	9:A:2195:HOH:O	1.35	1.25
1:A:294:SER:CB	3:C:300:TYR:CD1	2.28	1.16
1:A:294:SER:CB	3:C:300:TYR:HD1	1.65	1.09
1:A:294:SER:O	3:C:301:ARG:HA	1.64	0.98
1:A:294:SER:HB3	3:C:300:TYR:HD1	0.82	0.95
2:B:19:GLN:HG3	9:B:2029:HOH:O	1.68	0.94
1:A:294:SER:HB2	3:C:300:TYR:CE1	2.06	0.91
2:B:126:ASN:HD22	2:B:128:GLY:H	1.17	0.87
1:A:64[A]:MET:SD	1:A:316:ILE:HG12	2.18	0.82
1:A:285[A]:THR:HG23	1:A:286:TYR:N	1.92	0.82
1:A:294:SER:HB2	3:C:300:TYR:CD1	2.16	0.79
1:A:294:SER:O	3:C:301:ARG:CA	2.33	0.76
2:B:232:HIS:HD2	2:B:235:ARG:HH22	1.31	0.75
2:B:232:HIS:CD2	2:B:235:ARG:HH22	2.06	0.73
1:A:64[A]:MET:HE2	1:A:316:ILE:CG1	2.23	0.68
1:A:185:ARG:HG2	9:A:2205:HOH:O	1.94	0.67
2:B:19:GLN:CG	9:B:2029:HOH:O	2.34	0.66
1:A:64[A]:MET:HE2	1:A:316:ILE:HG12	1.76	0.66
2:B:166:ARG:O	2:B:232:HIS:HE1	1.79	0.66
1:A:64[B]:MET:HE2	1:A:319:LEU:CD2	2.27	0.65

Continued on next page...

Continued from previous page...

Atom-1	Atom-2	Interatomic distance (Å)	Clash overlap (Å)
1:A:290:HIS:HD2	1:A:297:SER:H	1.42	0.65
2:B:195:ARG:NE	9:B:2190:HOH:O	2.29	0.64
1:A:64[A]:MET:CE	1:A:316:ILE:HG12	2.28	0.64
1:A:64[B]:MET:CE	1:A:319:LEU:HD23	2.28	0.62
1:A:61:TYR:O	1:A:64[A]:MET:HG2	2.00	0.61
2:B:19:GLN:HB2	2:B:203:ILE:HD11	1.83	0.61
2:B:232:HIS:HD2	2:B:235:ARG:NH2	1.97	0.61
1:A:185:ARG:CD	9:A:2205:HOH:O	2.48	0.60
1:A:74:LEU:HD21	1:A:130[A]:MET:SD	2.44	0.58
2:B:19:GLN:CD	9:B:2029:HOH:O	2.45	0.58
1:A:105:ASN:ND2	9:A:2126:HOH:O	2.34	0.58
1:A:351:GLN:HG2	1:A:355[A]:LYS:HE3	1.86	0.56
1:A:64[B]:MET:CE	1:A:319:LEU:CD2	2.82	0.56
1:A:185:ARG:HD3	9:A:2205:HOH:O	2.05	0.56
1:A:35[B]:ARG:HB3	9:A:2038:HOH:O	2.06	0.55
1:A:359:ASN:HD22	1:A:400:LYS:HD3	1.72	0.55
1:A:290:HIS:CD2	1:A:297:SER:H	2.23	0.54
1:A:64[B]:MET:HE2	1:A:319:LEU:HD22	1.89	0.54
1:A:359:ASN:ND2	1:A:400:LYS:HB2	2.23	0.54
1:A:64[A]:MET:HE2	1:A:316:ILE:HG13	1.89	0.53
1:A:363:LEU:HD23	1:A:363:LEU:C	2.34	0.53
1:A:384:ARG:HA	1:A:387:GLN:HE21	1.74	0.52
1:A:96:HIS:CD2	1:A:117:GLY:H	2.28	0.52
1:A:29:SER:HB3	9:A:2010:HOH:O	2.10	0.52
1:A:210[A]:THR:HG22	1:A:211:LEU:HG	1.92	0.52
1:A:376:ARG:NH1	9:A:2346:HOH:O	2.41	0.51
1:A:351:GLN:CG	1:A:355[A]:LYS:HE3	2.40	0.51
1:A:64[A]:MET:SD	1:A:316:ILE:HA	2.51	0.50
3:C:299:ALA:HA	9:C:2001:HOH:O	2.11	0.50
1:A:185:ARG:CG	9:A:2205:HOH:O	2.57	0.50
1:A:170:GLN:O	2:B:85:GLY:HA3	2.12	0.49
1:A:363:LEU:HD22	1:A:364:PHE:CE2	2.47	0.49
1:A:29:SER:CB	9:A:2010:HOH:O	2.60	0.49
1:A:210[A]:THR:CG2	1:A:211:LEU:HG	2.43	0.49
1:A:64[B]:MET:HE2	1:A:319:LEU:HD23	1.95	0.47
1:A:294:SER:HB2	3:C:300:TYR:HE1	1.71	0.47
1:A:82:ARG:HD3	1:A:353:GLU:OE2	2.15	0.47
2:B:232:HIS:CD2	2:B:235:ARG:HH12	2.33	0.47
1:A:186[A]:VAL:CG2	1:A:273[A]:VAL:HB	2.45	0.47
1:A:146[A]:MET:HG3	1:A:149:HIS:CE1	2.50	0.46
1:A:64[A]:MET:CG	1:A:316:ILE:HG12	2.46	0.46

Continued on next page...

Continued from previous page...

Atom-1	Atom-2	Interatomic distance (Å)	Clash overlap (Å)
1:A:64[B]:MET:HE3	1:A:319:LEU:HD23	1.98	0.45
1:A:384:ARG:HD3	9:A:2358:HOH:O	2.16	0.45
1:A:39:ARG:HH21	1:A:312:GLN:HB3	1.81	0.45
1:A:73:ILE:HD12	1:A:345:VAL:HG11	1.98	0.45
2:B:237:VAL:HG21	2:B:332:CYS:HB2	1.99	0.45
1:A:24:GLN:HE21	1:A:24:GLN:HB3	1.57	0.44
1:A:294:SER:O	3:C:301:ARG:C	2.60	0.44
1:A:387:GLN:NE2	9:A:2361:HOH:O	2.50	0.43
2:B:37:LYS:HE3	9:B:2178:HOH:O	2.19	0.43
1:A:359:ASN:HD22	1:A:400:LYS:CD	2.31	0.43
1:A:294:SER:CB	3:C:300:TYR:CE1	2.71	0.43
1:A:146[A]:MET:CG	1:A:149:HIS:CE1	3.02	0.42
1:A:6:LYS:HA	1:A:7:PRO:HD3	1.91	0.42
1:A:242:ARG:HD3	9:A:2245:HOH:O	2.19	0.42
1:A:96:HIS:CE1	1:A:114:ARG:O	2.73	0.42
1:A:359:ASN:HD22	1:A:400:LYS:HB2	1.83	0.42
2:B:55:ARG:HD2	2:B:195:ARG:HH21	1.84	0.42
1:A:363:LEU:HD23	1:A:363:LEU:O	2.20	0.42
1:A:85:PHE:CE2	1:A:87:MET:HG3	2.55	0.41
1:A:226:ILE:HG13	4:A:601:THY:H71	2.02	0.41
2:B:279:HIS:O	2:B:311:CYS:HA	2.19	0.41
1:A:275:GLU:OE1	1:A:277:GLN:NE2	2.50	0.41
2:B:164:ILE:HG12	2:B:188:PHE:HB2	2.02	0.40
1:A:73:ILE:HD12	1:A:345:VAL:CG1	2.52	0.40
1:A:64[A]:MET:SD	1:A:319:LEU:HD23	2.62	0.40

There are no symmetry-related clashes.

5.3 Torsion angles [i](#)

5.3.1 Protein backbone [i](#)

In the following table, the Percentiles column shows the percent Ramachandran outliers of the chain as a percentile score with respect to all X-ray entries followed by that with respect to entries of similar resolution.

The Analysed column shows the number of residues for which the backbone conformation was analysed, and the total number of residues.

Mol	Chain	Analysed	Favoured	Allowed	Outliers	Percentiles
1	A	399/400 (100%)	389 (98%)	7 (2%)	3 (1%)	16 6

Continued on next page...

Continued from previous page...

Mol	Chain	Analysed	Favoured	Allowed	Outliers	Percentiles	
2	B	339/342 (99%)	330 (97%)	9 (3%)	0	100	100
3	C	1/3 (33%)	1 (100%)	0	0	100	100
All	All	739/745 (99%)	720 (97%)	16 (2%)	3 (0%)	30	19

All (3) Ramachandran outliers are listed below:

Mol	Chain	Res	Type
1	A	113	TYR
1	A	148	VAL
1	A	226	ILE

5.3.2 Protein sidechains [i](#)

In the following table, the Percentiles column shows the percent sidechain outliers of the chain as a percentile score with respect to all X-ray entries followed by that with respect to entries of similar resolution.

The Analysed column shows the number of residues for which the sidechain conformation was analysed, and the total number of residues.

Mol	Chain	Analysed	Rotameric	Outliers	Percentiles	
1	A	339/336 (101%)	331 (98%)	8 (2%)	43	31
2	B	290/289 (100%)	289 (100%)	1 (0%)	86	86
3	C	2/2 (100%)	1 (50%)	1 (50%)	0	0
All	All	631/627 (101%)	621 (98%)	10 (2%)	57	47

All (10) residues with a non-rotameric sidechain are listed below:

Mol	Chain	Res	Type
1	A	24	GLN
1	A	29	SER
1	A	148	VAL
1	A	182	ASN
1	A	210[A]	THR
1	A	210[B]	THR
1	A	363	LEU
1	A	376	ARG
2	B	296	GLN
3	C	301	ARG

Sometimes sidechains can be flipped to improve hydrogen bonding and reduce clashes. All (14) such sidechains are listed below:

Mol	Chain	Res	Type
1	A	24	GLN
1	A	96	HIS
1	A	105	ASN
1	A	156	HIS
1	A	184	ASN
1	A	290	HIS
1	A	351	GLN
1	A	369	GLN
1	A	387	GLN
1	A	392	HIS
2	B	126	ASN
2	B	232	HIS
2	B	296	GLN
2	B	302	ASN

5.3.3 RNA [i](#)

There are no RNA molecules in this entry.

5.4 Non-standard residues in protein, DNA, RNA chains [i](#)

There are no non-standard protein/DNA/RNA residues in this entry.

5.5 Carbohydrates [i](#)

There are no oligosaccharides in this entry.

5.6 Ligand geometry [i](#)

Of 8 ligands modelled in this entry, 5 are monoatomic - leaving 3 for Mogul analysis.

In the following table, the Counts columns list the number of bonds (or angles) for which Mogul statistics could be retrieved, the number of bonds (or angles) that are observed in the model and the number of bonds (or angles) that are defined in the Chemical Component Dictionary. The Link column lists molecule types, if any, to which the group is linked. The Z score for a bond length (or angle) is the number of standard deviations the observed value is removed from the expected value. A bond length (or angle) with $|Z| > 2$ is considered an outlier worth inspection. RMSZ is the root-mean-square of all Z scores of the bond lengths (or angles).

Mol	Type	Chain	Res	Link	Bond lengths			Bond angles		
					Counts	RMSZ	# Z > 2	Counts	RMSZ	# Z > 2
4	THY	A	601	6	30,33,33	2.31	8 (26%)	37,49,49	1.97	10 (27%)
8	GOL	B	1344	-	5,5,5	0.29	0	5,5,5	0.50	0
8	GOL	B	1345	-	5,5,5	0.47	0	5,5,5	0.71	0

In the following table, the Chirals column lists the number of chiral outliers, the number of chiral centers analysed, the number of these observed in the model and the number defined in the Chemical Component Dictionary. Similar counts are reported in the Torsion and Rings columns. '-' means no outliers of that kind were identified.

Mol	Type	Chain	Res	Link	Chirals	Torsions	Rings
4	THY	A	601	6	-	5/27/27/27	0/2/2/2
8	GOL	B	1344	-	-	0/4/4/4	-
8	GOL	B	1345	-	-	1/4/4/4	-

All (8) bond length outliers are listed below:

Mol	Chain	Res	Type	Atoms	Z	Observed(Å)	Ideal(Å)
4	A	601	THY	O9-C8	-8.20	1.26	1.42
4	A	601	THY	C4'-N3'	5.21	1.42	1.35
4	A	601	THY	C35-C5'	3.21	1.57	1.51
4	A	601	THY	C4A-C4	2.78	1.55	1.49
4	A	601	THY	C5-C4	2.68	1.40	1.35
4	A	601	THY	C2'-N3'	2.65	1.38	1.34
4	A	601	THY	C6'-C5'	2.44	1.42	1.37
4	A	601	THY	PB-O2B	2.07	1.62	1.54

All (10) bond angle outliers are listed below:

Mol	Chain	Res	Type	Atoms	Z	Observed(°)	Ideal(°)
4	A	601	THY	C6'-N1'-C2'	5.20	124.62	116.07
4	A	601	THY	C2A-C2'-N1'	4.89	122.41	117.20
4	A	601	THY	N1'-C2'-N3'	-3.53	119.66	125.53
4	A	601	THY	O9-C8-C9	3.24	117.25	110.61
4	A	601	THY	C5'-C6'-N1'	-3.10	118.80	123.83
4	A	601	THY	C4-C5-S1	-3.09	107.36	110.56
4	A	601	THY	N4'-C4'-N3'	-2.70	113.39	117.03
4	A	601	THY	O3B-PB-O2B	2.55	117.37	107.80
4	A	601	THY	C4A-C4-C5	-2.42	121.55	127.75
4	A	601	THY	O3A-PA-O1A	-2.07	104.47	110.70

There are no chirality outliers.

All (6) torsion outliers are listed below:

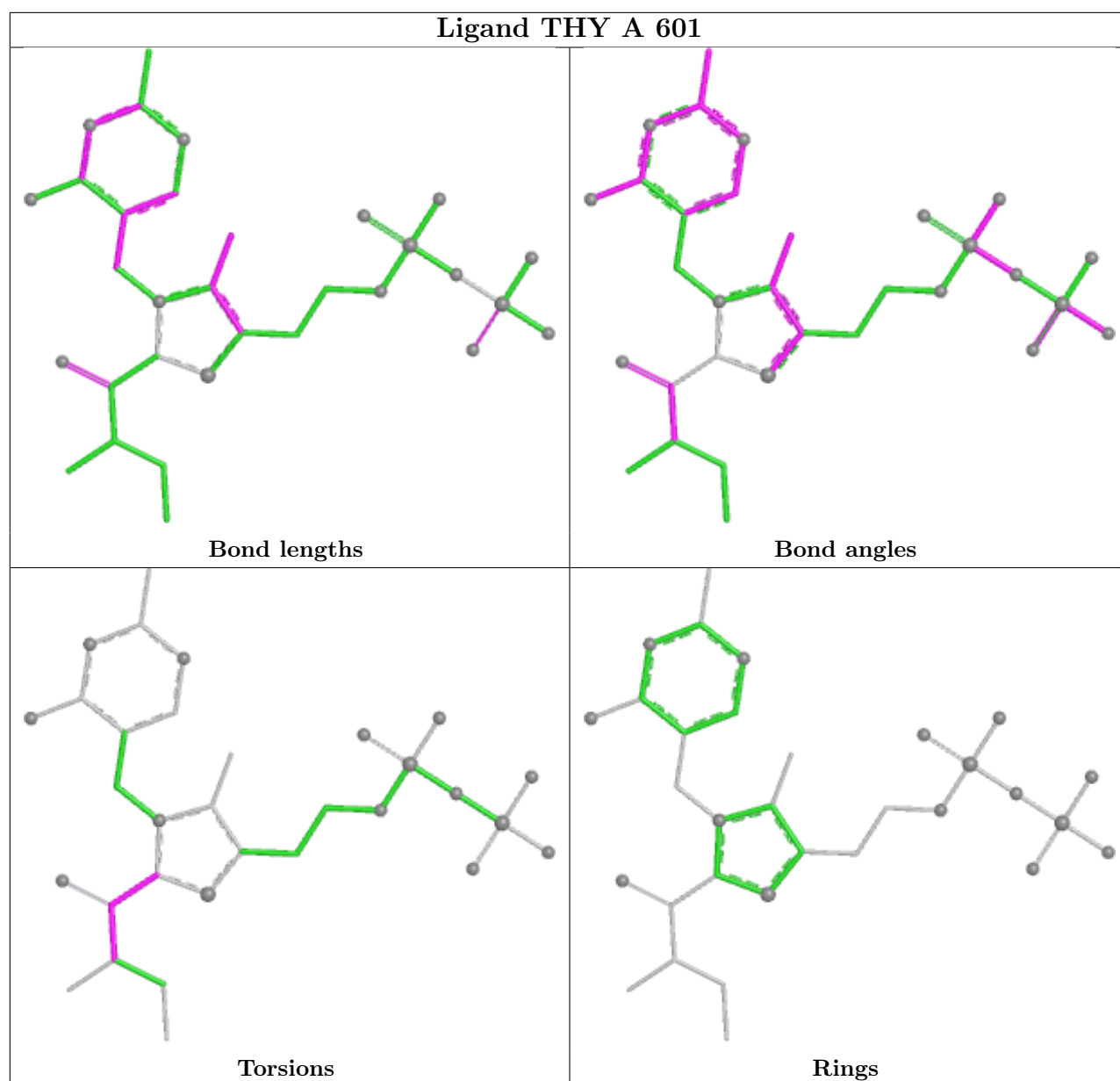
Mol	Chain	Res	Type	Atoms
4	A	601	THY	N3-C2-C8-O9
4	A	601	THY	N3-C2-C8-C9
4	A	601	THY	C2-C8-C9-C11
8	B	1345	GOL	C1-C2-C3-O3
4	A	601	THY	S1-C2-C8-O9
4	A	601	THY	C2-C8-C9-C10

There are no ring outliers.

1 monomer is involved in 1 short contact:

Mol	Chain	Res	Type	Clashes	Symm-Clashes
4	A	601	THY	1	0

The following is a two-dimensional graphical depiction of Mogul quality analysis of bond lengths, bond angles, torsion angles, and ring geometry for all instances of the Ligand of Interest. In addition, ligands with molecular weight > 250 and outliers as shown on the validation Tables will also be included. For torsion angles, if less than 5% of the Mogul distribution of torsion angles is within 10 degrees of the torsion angle in question, then that torsion angle is considered an outlier. Any bond that is central to one or more torsion angles identified as an outlier by Mogul will be highlighted in the graph. For rings, the root-mean-square deviation (RMSD) between the ring in question and similar rings identified by Mogul is calculated over all ring torsion angles. If the average RMSD is greater than 60 degrees and the minimal RMSD between the ring in question and any Mogul-identified rings is also greater than 60 degrees, then that ring is considered an outlier. The outliers are highlighted in purple. The color gray indicates Mogul did not find sufficient equivalents in the CSD to analyse the geometry.



5.7 Other polymers [i](#)

There are no such residues in this entry.

5.8 Polymer linkage issues [i](#)

There are no chain breaks in this entry.

6 Fit of model and data

6.1 Protein, DNA and RNA chains

In the following table, the column labelled ‘#RSRZ > 2’ contains the number (and percentage) of RSRZ outliers, followed by percent RSRZ outliers for the chain as percentile scores relative to all X-ray entries and entries of similar resolution. The OWAB column contains the minimum, median, 95th percentile and maximum values of the occupancy-weighted average B-factor per residue. The column labelled ‘Q < 0.9’ lists the number of (and percentage) of residues with an average occupancy less than 0.9.

Mol	Chain	Analysed	<RSRZ>	#RSRZ>2	OWAB(Å ²)	Q<0.9
1	A	390/400 (97%)	0.05	20 (5%) 33 32	3, 10, 27, 42	13 (3%)
2	B	336/342 (98%)	-0.54	1 (0%) 90 90	3, 8, 20, 40	7 (2%)
3	C	3/3 (100%)	2.04	1 (33%) 1 1	31, 31, 34, 36	0
All	All	729/745 (97%)	-0.21	22 (3%) 52 52	3, 9, 25, 42	20 (2%)

All (22) RSRZ outliers are listed below:

Mol	Chain	Res	Type	RSRZ
1	A	64[A]	MET	6.2
1	A	299	ALA	5.8
1	A	300	TYR	4.9
1	A	308	TYR	4.7
1	A	309	TRP	4.3
1	A	298	SER	3.5
1	A	400	LYS	3.5
1	A	312	GLN	3.4
1	A	307	ASN	3.3
2	B	7	GLN	3.3
3	C	299	ALA	3.2
1	A	294	SER	3.0
1	A	29	SER	2.6
1	A	397	HIS	2.5
1	A	342	ARG	2.5
1	A	311	LYS	2.3
1	A	286	TYR	2.2
1	A	313	ASP	2.2
1	A	310	ASP	2.2
1	A	26	ASN	2.1
1	A	338	ARG	2.1
1	A	297	SER	2.0

6.2 Non-standard residues in protein, DNA, RNA chains [i](#)

There are no non-standard protein/DNA/RNA residues in this entry.

6.3 Carbohydrates [i](#)

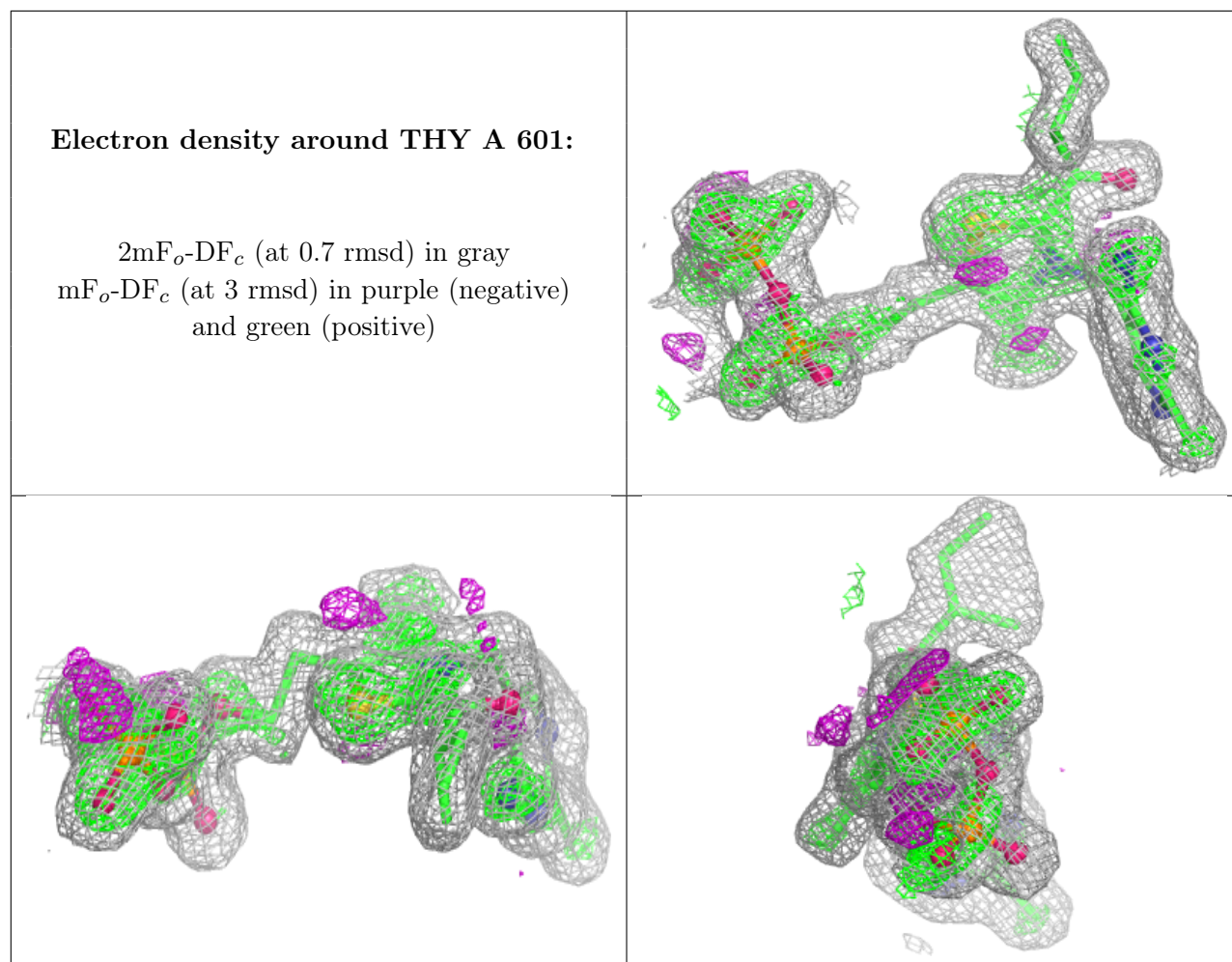
There are no oligosaccharides in this entry.

6.4 Ligands [i](#)

In the following table, the Atoms column lists the number of modelled atoms in the group and the number defined in the chemical component dictionary. The B-factors column lists the minimum, median, 95th percentile and maximum values of B factors of atoms in the group. The column labelled 'Q< 0.9' lists the number of atoms with occupancy less than 0.9.

Mol	Type	Chain	Res	Atoms	RSCC	RSR	B-factors(\AA^2)	Q<0.9
7	CL	A	1404	1/1	0.85	0.17	65,65,65,65	0
8	GOL	B	1345	6/6	0.91	0.14	17,29,30,33	0
4	THY	A	601	32/32	0.96	0.10	2,2,15,16	0
8	GOL	B	1344	6/6	0.97	0.05	8,9,11,13	0
7	CL	B	1343	1/1	0.99	0.11	18,18,18,18	0
6	MN	A	1403	1/1	0.99	0.03	6,6,6,6	0
5	K	A	1402	1/1	0.99	0.10	12,12,12,12	0
5	K	B	1346	1/1	1.00	0.12	16,16,16,16	0

The following is a graphical depiction of the model fit to experimental electron density of all instances of the Ligand of Interest. In addition, ligands with molecular weight > 250 and outliers as shown on the geometry validation Tables will also be included. Each fit is shown from different orientation to approximate a three-dimensional view.



6.5 Other polymers [i](#)

There are no such residues in this entry.