



wwPDB X-ray Structure Validation Summary Report ⓘ

Mar 6, 2026 – 10:29 PM UTC

PDB ID : 3BE8 / pdb_00003be8
Title : Crystal structure of the synaptic protein neuroligin 4
Authors : Fabrichny, I.P.; Leone, P.; Sulzenbacher, G.; Comoletti, D.; Miller, M.T.; Taylor, P.; Bourne, Y.; Marchot, P.
Deposited on : 2007-11-16
Resolution : 2.20 Å (reported)

This is a wwPDB X-ray Structure Validation Summary Report for a publicly released PDB entry.

We welcome your comments at validation@mail.wwpdb.org

A user guide is available at

<https://www.wwpdb.org/validation/2017/XrayValidationReportHelp>

with specific help available everywhere you see the ⓘ symbol.

The types of validation reports are described at

<http://www.wwpdb.org/validation/2017/FAQs#types>.

The following versions of software and data (see [references ⓘ](#)) were used in the production of this report:

MolProbity : 4-5-2 with Phenix2.0
Mogul : 2022.3.0, CSD as543be (2022)
Xtriage (Phenix) : 2.0
EDS : 3.0
Percentile statistics : 20250101.v01 (using entries in the PDB archive January 1st 2025)
CCP4 : 9.0.010 (Gargrove)
Density-Fitness : 1.0.12
Ideal geometry (proteins) : Engh & Huber (2001)
Ideal geometry (DNA, RNA) : Parkinson et al. (1996)
Validation Pipeline (wwPDB-VP) : 2.49

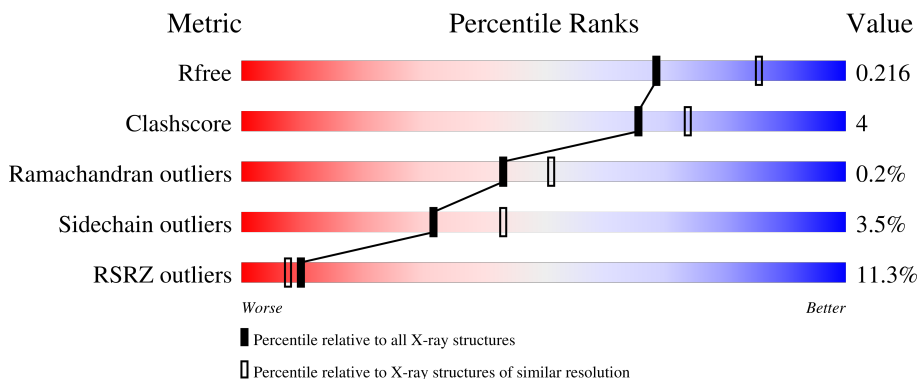
1 Overall quality at a glance

The following experimental techniques were used to determine the structure:

X-RAY DIFFRACTION

The reported resolution of this entry is 2.20 Å.

Percentile scores (ranging between 0-100) for global validation metrics of the entry are shown in the following graphic. The table shows the number of entries on which the scores are based.



Metric	Whole archive (#Entries)	Similar resolution (#Entries, resolution range(Å))
R_{free}	180053	6164 (2.20-2.20)
Clashscore	190562	6851 (2.20-2.20)
Ramachandran outliers	187476	6768 (2.20-2.20)
Sidechain outliers	187428	6769 (2.20-2.20)
RSRZ outliers	180081	6166 (2.20-2.20)

The table below summarises the geometric issues observed across the polymeric chains and their fit to the electron density. The red, orange, yellow and green segments of the lower bar indicate the fraction of residues that contain outliers for ≥ 3 , 2, 1 and 0 types of geometric quality criteria respectively. A grey segment represents the fraction of residues that are not modelled. The numeric value for each fraction is indicated below the corresponding segment, with a dot representing fractions $\leq 5\%$. The upper red bar (where present) indicates the fraction of residues that have poor fit to the electron density. The numeric value is given above the bar.

Mol	Chain	Length	Quality of chain
1	A	588	
1	B	588	

The following table lists non-polymeric compounds, carbohydrate monomers and non-standard residues in protein, DNA, RNA chains that are outliers for geometric or electron-density-fit criteria:

Mol	Type	Chain	Res	Chirality	Geometry	Clashes	Electron density
2	NAG	A	620	-	-	-	X
2	NAG	A	621	X	-	-	-
2	NAG	B	620	-	-	-	X
5	CL	A	624	-	-	-	X

2 Entry composition i

There are 8 unique types of molecules in this entry. The entry contains 9309 atoms, of which 0 are hydrogens and 0 are deuteriums.

In the tables below, the ZeroOcc column contains the number of atoms modelled with zero occupancy, the AltConf column contains the number of residues with at least one atom in alternate conformation and the Trace column contains the number of residues modelled with at most 2 atoms.

- Molecule 1 is a protein called Neuroligin-4, X-linked.

Mol	Chain	Residues	Atoms					ZeroOcc	AltConf	Trace
			Total	C	N	O	S			
1	A	543	4345	2787	714	821	23	0	10	0
1	B	534	4261	2736	699	804	22	0	7	0

There are 26 discrepancies between the modelled and reference sequences:

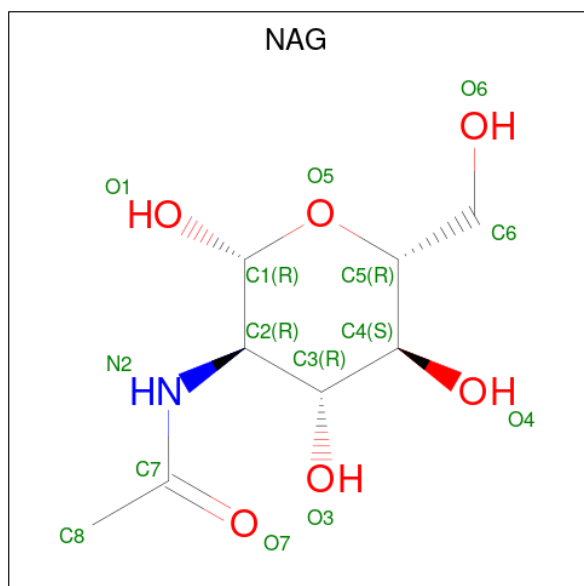
Chain	Residue	Modelled	Actual	Comment	Reference
A	-12	ASP	-	expression tag	UNP Q8N0W4
A	-11	TYR	-	expression tag	UNP Q8N0W4
A	-10	LYS	-	expression tag	UNP Q8N0W4
A	-9	ASP	-	expression tag	UNP Q8N0W4
A	-8	ASP	-	expression tag	UNP Q8N0W4
A	-7	ASP	-	expression tag	UNP Q8N0W4
A	-6	ASP	-	expression tag	UNP Q8N0W4
A	-5	LYS	-	expression tag	UNP Q8N0W4
A	-4	LEU	-	expression tag	UNP Q8N0W4
A	-3	ALA	-	expression tag	UNP Q8N0W4
A	-2	ALA	-	expression tag	UNP Q8N0W4
A	-1	ALA	-	expression tag	UNP Q8N0W4
A	561	ARG	LYS	SEE REMARK 999	UNP Q8N0W4
B	-12	ASP	-	expression tag	UNP Q8N0W4
B	-11	TYR	-	expression tag	UNP Q8N0W4
B	-10	LYS	-	expression tag	UNP Q8N0W4
B	-9	ASP	-	expression tag	UNP Q8N0W4
B	-8	ASP	-	expression tag	UNP Q8N0W4
B	-7	ASP	-	expression tag	UNP Q8N0W4
B	-6	ASP	-	expression tag	UNP Q8N0W4
B	-5	LYS	-	expression tag	UNP Q8N0W4
B	-4	LEU	-	expression tag	UNP Q8N0W4
B	-3	ALA	-	expression tag	UNP Q8N0W4
B	-2	ALA	-	expression tag	UNP Q8N0W4
B	-1	ALA	-	expression tag	UNP Q8N0W4

Continued on next page...

Continued from previous page...

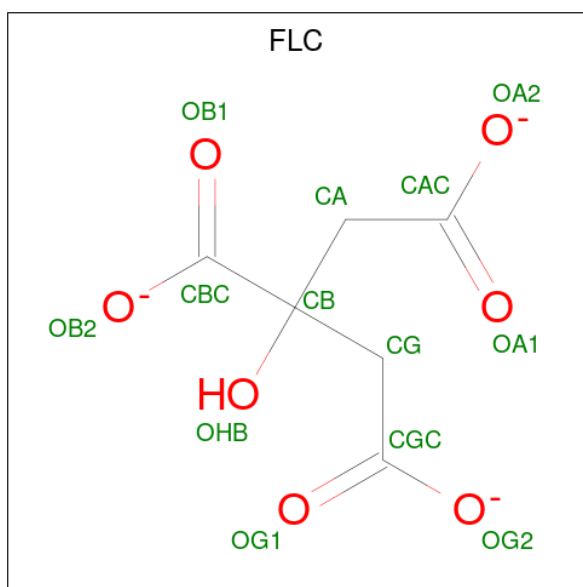
Chain	Residue	Modelled	Actual	Comment	Reference
B	561	ARG	LYS	SEE REMARK 999	UNP Q8N0W4

- Molecule 2 is 2-acetamido-2-deoxy-beta-D-glucopyranose (CCD ID: NAG) (formula: $C_8H_{15}NO_6$).



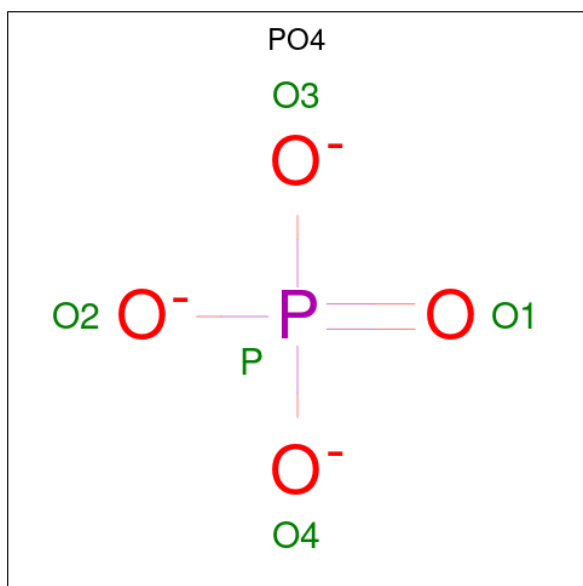
Mol	Chain	Residues	Atoms				ZeroOcc	AltConf
			Total	C	N	O		
2	A	1	Total	C	N	O	0	0
			14	8	1	5		
2	A	1	Total	C	N	O	0	0
			14	8	1	5		
2	B	1	Total	C	N	O	0	0
			14	8	1	5		
2	B	1	Total	C	N	O	0	0
			14	8	1	5		

- Molecule 3 is CITRATE ANION (CCD ID: FLC) (formula: $C_6H_5O_7$).



Mol	Chain	Residues	Atoms	ZeroOcc	AltConf
3	A	1	Total C O 13 6 7	0	0
3	B	1	Total C O 13 6 7	0	0

- Molecule 4 is PHOSPHATE ION (CCD ID: PO4) (formula: O_4P).



Mol	Chain	Residues	Atoms	ZeroOcc	AltConf
4	A	1	Total O P 5 4 1	0	0
4	B	1	Total O P 5 4 1	0	0

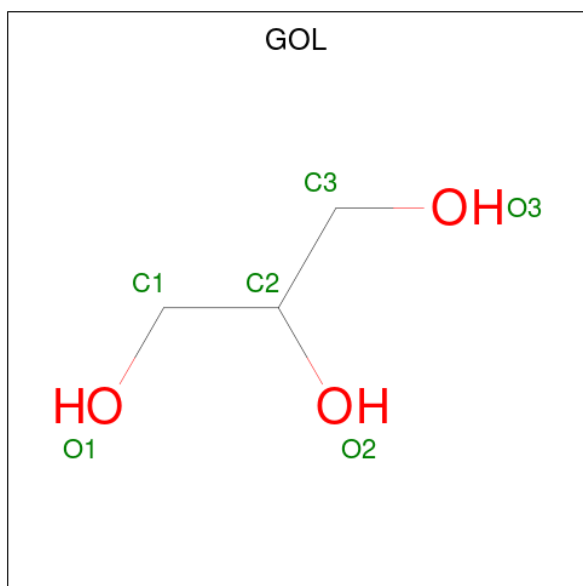
- Molecule 5 is CHLORIDE ION (CCD ID: CL) (formula: Cl).

Mol	Chain	Residues	Atoms	ZeroOcc	AltConf
5	A	3	Total Cl 3 3	0	0
5	B	3	Total Cl 3 3	0	0

- Molecule 6 is SODIUM ION (CCD ID: NA) (formula: Na).

Mol	Chain	Residues	Atoms	ZeroOcc	AltConf
6	A	1	Total Na 1 1	0	0

- Molecule 7 is GLYCEROL (CCD ID: GOL) (formula: C₃H₈O₃).



Mol	Chain	Residues	Atoms	ZeroOcc	AltConf
7	A	1	Total C O 6 3 3	0	0
7	B	1	Total C O 6 3 3	0	0

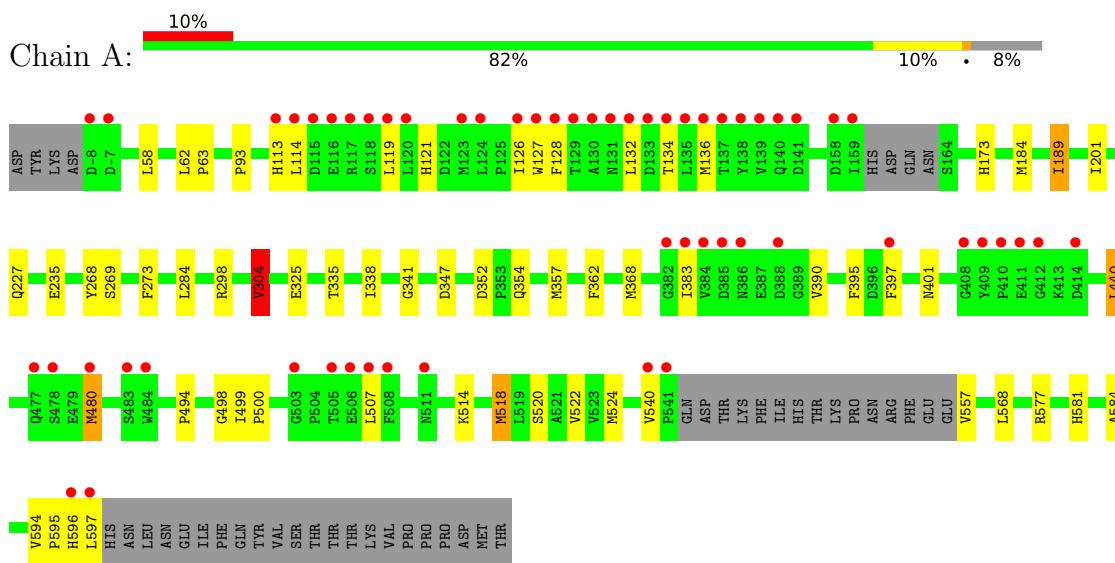
- Molecule 8 is water.

Mol	Chain	Residues	Atoms	ZeroOcc	AltConf
8	A	311	Total O 311 311	0	0
8	B	281	Total O 281 281	0	0

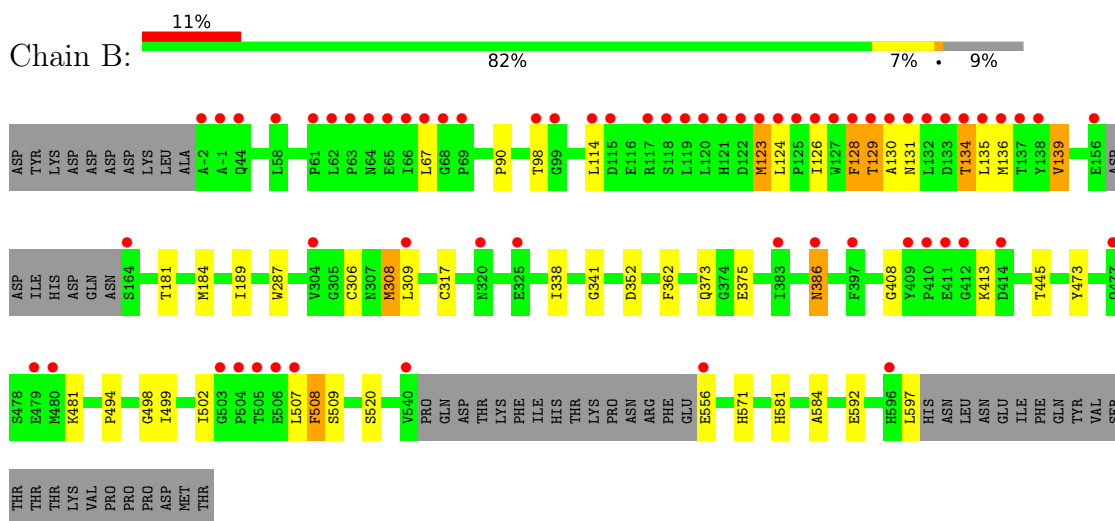
3 Residue-property plots [i](#)

These plots are drawn for all protein, RNA, DNA and oligosaccharide chains in the entry. The first graphic for a chain summarises the proportions of the various outlier classes displayed in the second graphic. The second graphic shows the sequence view annotated by issues in geometry and electron density. Residues are color-coded according to the number of geometric quality criteria for which they contain at least one outlier: green = 0, yellow = 1, orange = 2 and red = 3 or more. A red dot above a residue indicates a poor fit to the electron density ($RSRZ > 2$). Stretches of 2 or more consecutive residues without any outlier are shown as a green connector. Residues present in the sample, but not in the model, are shown in grey.

- Molecule 1: Neuroligin-4, X-linked



- Molecule 1: Neuroligin-4, X-linked



4 Data and refinement statistics

Property	Value	Source
Space group	P 21 21 2	Depositor
Cell constants a, b, c, α , β , γ	139.73Å 154.05Å 81.30Å 90.00° 90.00° 90.00°	Depositor
Resolution (Å)	29.68 – 2.20 29.68 – 2.20	Depositor EDS
% Data completeness (in resolution range)	99.9 (29.68-2.20) 99.9 (29.68-2.20)	Depositor EDS
R_{merge}	(Not available)	Depositor
R_{sym}	0.07	Depositor
$\langle I/\sigma(I) \rangle$ ¹	4.35 (at 2.20Å)	Xtrriage
Refinement program	REFMAC 5.2.0005	Depositor
R, R_{free}	0.167 , 0.201 0.186 , 0.216	Depositor DCC
R_{free} test set	4474 reflections (4.99%)	wwPDB-VP
Wilson B-factor (Å ²)	33.7	Xtrriage
Anisotropy	0.081	Xtrriage
Bulk solvent k_{sol} (e/Å ³), B_{sol} (Å ²)	0.35 , 38.6	EDS
L-test for twinning ²	$\langle L \rangle = 0.48$, $\langle L^2 \rangle = 0.31$	Xtrriage
Estimated twinning fraction	No twinning to report.	Xtrriage
F_o, F_c correlation	0.95	EDS
Total number of atoms	9309	wwPDB-VP
Average B, all atoms (Å ²)	41.0	wwPDB-VP

Xtrriage's analysis on translational NCS is as follows: *The largest off-origin peak in the Patterson function is 3.91% of the height of the origin peak. No significant pseudotranslation is detected.*

¹Intensities estimated from amplitudes.

²Theoretical values of $\langle |L| \rangle$, $\langle L^2 \rangle$ for acentric reflections are 0.5, 0.333 respectively for untwinned datasets, and 0.375, 0.2 for perfectly twinned datasets.

5 Model quality [i](#)

5.1 Standard geometry [i](#)

Bond lengths and bond angles in the following residue types are not validated in this section: NA, CL, PO4, FLC, NAG, GOL

The Z score for a bond length (or angle) is the number of standard deviations the observed value is removed from the expected value. A bond length (or angle) with $|Z| > 5$ is considered an outlier worth inspection. RMSZ is the root-mean-square of all Z scores of the bond lengths (or angles).

Mol	Chain	Bond lengths		Bond angles	
		RMSZ	# Z >5	RMSZ	# Z >5
1	A	0.83	2/4493 (0.0%)	0.87	3/6126 (0.0%)
1	B	0.77	1/4401 (0.0%)	0.85	0/6002
All	All	0.80	3/8894 (0.0%)	0.86	3/12128 (0.0%)

Chiral center outliers are detected by calculating the chiral volume of a chiral center and verifying if the center is modelled as a planar moiety or with the opposite hand. A planarity outlier is detected by checking planarity of atoms in a peptide group, atoms in a mainchain group or atoms of a sidechain that are expected to be planar.

Mol	Chain	#Chirality outliers	#Planarity outliers
1	B	0	1

All (3) bond length outliers are listed below:

Mol	Chain	Res	Type	Atoms	Z	Observed(Å)	Ideal(Å)
1	B	90	PRO	CA-C	6.24	1.55	1.51
1	A	93	PRO	CA-C	5.09	1.54	1.51
1	A	304	VAL	CA-C	5.03	1.57	1.52

All (3) bond angle outliers are listed below:

Mol	Chain	Res	Type	Atoms	Z	Observed(°)	Ideal(°)
1	A	304	VAL	N-CA-CB	-6.19	103.20	112.67
1	A	540	VAL	N-CA-C	5.84	113.66	107.76
1	A	304	VAL	CB-CA-C	5.46	116.11	110.70

There are no chirality outliers.

All (1) planarity outliers are listed below:

Mol	Chain	Res	Type	Group
1	B	508	PHE	Peptide

5.2 Too-close contacts [i](#)

In the following table, the Non-H and H(model) columns list the number of non-hydrogen atoms and hydrogen atoms in the chain respectively. The H(added) column lists the number of hydrogen atoms added and optimized by MolProbity. The Clashes column lists the number of clashes within the asymmetric unit, whereas Symm-Clashes lists symmetry-related clashes.

Mol	Chain	Non-H	H(model)	H(added)	Clashes	Symm-Clashes
1	A	4345	0	4216	30	0
1	B	4261	0	4119	33	0
2	A	28	0	26	0	0
2	B	28	0	26	0	0
3	A	13	0	5	0	0
3	B	13	0	5	0	0
4	A	5	0	0	0	0
4	B	5	0	0	0	0
5	A	3	0	0	0	0
5	B	3	0	0	0	0
6	A	1	0	0	0	0
7	A	6	0	8	0	0
7	B	6	0	8	0	0
8	A	311	0	0	4	0
8	B	281	0	0	1	0
All	All	9309	0	8413	63	0

The all-atom clashscore is defined as the number of clashes found per 1000 atoms (including hydrogen atoms). The all-atom clashscore for this structure is 4.

The worst 5 of 63 close contacts within the same asymmetric unit are listed below, sorted by their clash magnitude.

Atom-1	Atom-2	Interatomic distance (Å)	Clash overlap (Å)
1:B:114:LEU:HD12	1:B:136:MET:SD	2.10	0.91
1:A:284:LEU:HD11	1:A:357:MET:HE1	1.58	0.83
1:A:494:PRO:HA	1:A:499:ILE:HD12	1.71	0.73
1:B:386:ASN:HD22	1:B:386:ASN:N	1.85	0.72
1:B:306:CYS:HG	1:B:317:CYS:HG	0.73	0.72

There are no symmetry-related clashes.

5.3 Torsion angles [i](#)

5.3.1 Protein backbone [i](#)

In the following table, the Percentiles column shows the percent Ramachandran outliers of the chain as a percentile score with respect to all X-ray entries followed by that with respect to entries of similar resolution.

The Analysed column shows the number of residues for which the backbone conformation was analysed, and the total number of residues.

Mol	Chain	Analysed	Favoured	Allowed	Outliers	Percentiles	
1	A	547/588 (93%)	529 (97%)	17 (3%)	1 (0%)	43	51
1	B	535/588 (91%)	519 (97%)	15 (3%)	1 (0%)	43	51
All	All	1082/1176 (92%)	1048 (97%)	32 (3%)	2 (0%)	43	51

All (2) Ramachandran outliers are listed below:

Mol	Chain	Res	Type
1	A	595	PRO
1	B	128	PHE

5.3.2 Protein sidechains [i](#)

In the following table, the Percentiles column shows the percent sidechain outliers of the chain as a percentile score with respect to all X-ray entries followed by that with respect to entries of similar resolution.

The Analysed column shows the number of residues for which the sidechain conformation was analysed, and the total number of residues.

Mol	Chain	Analysed	Rotameric	Outliers	Percentiles	
1	A	475/510 (93%)	455 (96%)	20 (4%)	26	36
1	B	464/510 (91%)	450 (97%)	14 (3%)	36	49
All	All	939/1020 (92%)	905 (96%)	34 (4%)	32	42

5 of 34 residues with a non-rotameric sidechain are listed below:

Mol	Chain	Res	Type
1	B	352	ASP
1	B	362	PHE
1	B	592	GLU
1	A	440	LEU

Continued on next page...

Continued from previous page...

Mol	Chain	Res	Type
1	A	368[B]	MET

Sometimes sidechains can be flipped to improve hydrogen bonding and reduce clashes. 5 of 19 such sidechains are listed below:

Mol	Chain	Res	Type
1	B	216	GLN
1	B	405	ASN
1	B	462	GLN
1	B	386	ASN
1	A	462	GLN

5.3.3 RNA [i](#)

There are no RNA molecules in this entry.

5.4 Non-standard residues in protein, DNA, RNA chains [i](#)

There are no non-standard protein/DNA/RNA residues in this entry.

5.5 Carbohydrates [i](#)

There are no oligosaccharides in this entry.

5.6 Ligand geometry [i](#)

Of 17 ligands modelled in this entry, 7 are monoatomic - leaving 10 for Mogul analysis.

In the following table, the Counts columns list the number of bonds (or angles) for which Mogul statistics could be retrieved, the number of bonds (or angles) that are observed in the model and the number of bonds (or angles) that are defined in the Chemical Component Dictionary. The Link column lists molecule types, if any, to which the group is linked. The Z score for a bond length (or angle) is the number of standard deviations the observed value is removed from the expected value. A bond length (or angle) with $|Z| > 2$ is considered an outlier worth inspection. RMSZ is the root-mean-square of all Z scores of the bond lengths (or angles).

Mol	Type	Chain	Res	Link	Bond lengths			Bond angles		
					Counts	RMSZ	# Z > 2	Counts	RMSZ	# Z > 2
4	PO4	A	623	-	4,4,4	1.42	1 (25%)	6,6,6	1.65	2 (33%)
7	GOL	A	628	-	5,5,5	0.38	0	5,5,5	0.56	0

Mol	Type	Chain	Res	Link	Bond lengths			Bond angles		
					Counts	RMSZ	# Z > 2	Counts	RMSZ	# Z > 2
4	PO4	B	624	-	4,4,4	0.94	0	6,6,6	0.90	0
3	FLC	A	622	-	12,12,12	1.06	0	17,17,17	1.45	4 (23%)
3	FLC	B	623	-	12,12,12	1.15	2 (16%)	17,17,17	0.96	0
2	NAG	A	620	1	14,14,15	1.08	1 (7%)	17,19,21	1.31	2 (11%)
2	NAG	A	621	1	14,14,15	0.93	0	17,19,21	1.28	2 (11%)
7	GOL	B	627	-	5,5,5	0.39	0	5,5,5	0.57	0
2	NAG	B	621	1	14,14,15	0.95	0	17,19,21	1.03	1 (5%)
2	NAG	B	620	1	14,14,15	0.83	0	17,19,21	1.76	4 (23%)

In the following table, the Chirals column lists the number of chiral outliers, the number of chiral centers analysed, the number of these observed in the model and the number defined in the Chemical Component Dictionary. Similar counts are reported in the Torsion and Rings columns. '-' means no outliers of that kind were identified.

Mol	Type	Chain	Res	Link	Chirals	Torsions	Rings
7	GOL	A	628	-	-	4/4/4/4	-
3	FLC	A	622	-	-	2/16/16/16	-
3	FLC	B	623	-	-	2/16/16/16	-
2	NAG	A	620	1	-	2/6/23/26	0/1/1/1
2	NAG	A	621	1	1/1/5/7	0/6/23/26	0/1/1/1
7	GOL	B	627	-	-	4/4/4/4	-
2	NAG	B	621	1	-	2/6/23/26	0/1/1/1
2	NAG	B	620	1	-	2/6/23/26	0/1/1/1

All (4) bond length outliers are listed below:

Mol	Chain	Res	Type	Atoms	Z	Observed(Å)	Ideal(Å)
4	A	623	PO4	P-O2	-2.52	1.47	1.54
2	A	620	NAG	O5-C5	2.28	1.47	1.43
3	B	623	FLC	OA2-CAC	-2.07	1.24	1.30
3	B	623	FLC	OG2-CGC	-2.06	1.24	1.30

The worst 5 of 15 bond angle outliers are listed below:

Mol	Chain	Res	Type	Atoms	Z	Observed(°)	Ideal(°)
2	B	620	NAG	C8-C7-N2	4.38	123.39	116.12
2	B	620	NAG	O7-C7-C8	-3.61	115.62	122.05
2	A	620	NAG	O5-C1-C2	-3.35	106.11	111.29
4	A	623	PO4	O3-P-O1	-2.83	100.95	110.95

Continued on next page...

Continued from previous page...

Mol	Chain	Res	Type	Atoms	Z	Observed($^{\circ}$)	Ideal($^{\circ}$)
3	A	622	FLC	OB2-CBC-CB	2.81	118.53	113.14

All (1) chirality outliers are listed below:

Mol	Chain	Res	Type	Atom
2	A	621	NAG	C1

5 of 18 torsion outliers are listed below:

Mol	Chain	Res	Type	Atoms
7	A	628	GOL	O1-C1-C2-C3
7	B	627	GOL	O1-C1-C2-C3
7	B	627	GOL	C1-C2-C3-O3
2	B	620	NAG	C8-C7-N2-C2
2	B	620	NAG	O7-C7-N2-C2

There are no ring outliers.

No monomer is involved in short contacts.

5.7 Other polymers [i](#)

There are no such residues in this entry.

5.8 Polymer linkage issues [i](#)

There are no chain breaks in this entry.

6 Fit of model and data [i](#)

6.1 Protein, DNA and RNA chains [i](#)

In the following table, the column labelled '#RSRZ > 2' contains the number (and percentage) of RSRZ outliers, followed by percent RSRZ outliers for the chain as percentile scores relative to all X-ray entries and entries of similar resolution. The OWAB column contains the minimum, median, 95th percentile and maximum values of the occupancy-weighted average B-factor per residue. The column labelled 'Q < 0.9' lists the number of (and percentage) of residues with an average occupancy less than 0.9.

Mol	Chain	Analysed	<RSRZ>	#RSRZ>2	OWAB(Å ²)	Q<0.9
1	A	543/588 (92%)	0.33	58 (10%) 11 8	15, 33, 68, 89	10 (1%)
1	B	534/588 (90%)	0.51	64 (11%) 9 6	18, 37, 82, 115	7 (1%)
All	All	1077/1176 (91%)	0.42	122 (11%) 10 8	15, 35, 72, 115	17 (1%)

The worst 5 of 122 RSRZ outliers are listed below:

Mol	Chain	Res	Type	RSRZ
1	B	130	ALA	8.0
1	A	159	ILE	7.2
1	B	66	ILE	7.0
1	B	410	PRO	6.9
1	B	129	THR	6.6

6.2 Non-standard residues in protein, DNA, RNA chains [i](#)

There are no non-standard protein/DNA/RNA residues in this entry.

6.3 Carbohydrates [i](#)

There are no oligosaccharides in this entry.

6.4 Ligands [i](#)

In the following table, the Atoms column lists the number of modelled atoms in the group and the number defined in the chemical component dictionary. The B-factors column lists the minimum, median, 95th percentile and maximum values of B factors of atoms in the group. The column labelled 'Q < 0.9' lists the number of atoms with occupancy less than 0.9.

Mol	Type	Chain	Res	Atoms	RSCC	RSR	B-factors(\AA^2)	Q<0.9
2	NAG	A	620	14/15	0.44	0.43	175,185,197,198	0
2	NAG	B	620	14/15	0.48	0.43	166,174,185,187	0
2	NAG	A	621	14/15	0.66	0.27	118,136,148,148	0
2	NAG	B	621	14/15	0.78	0.19	107,120,134,138	0
5	CL	A	624	1/1	0.78	0.52	113,113,113,113	0
3	FLC	A	622	13/13	0.86	0.17	67,75,79,83	0
5	CL	B	622	1/1	0.86	0.53	120,120,120,120	0
5	CL	A	627	1/1	0.87	0.57	120,120,120,120	0
7	GOL	A	628	6/6	0.87	0.30	82,90,93,96	0
5	CL	B	625	1/1	0.89	0.48	109,109,109,109	0
7	GOL	B	627	6/6	0.90	0.28	85,93,97,98	0
6	NA	A	626	1/1	0.93	0.19	43,43,43,43	0
3	FLC	B	623	13/13	0.95	0.13	49,54,58,62	0
4	PO4	A	623	5/5	0.96	0.12	38,45,53,53	0
4	PO4	B	624	5/5	0.97	0.10	44,45,52,53	0
5	CL	B	626	1/1	0.98	0.07	38,38,38,38	0
5	CL	A	625	1/1	0.99	0.10	38,38,38,38	0

6.5 Other polymers [i](#)

There are no such residues in this entry.