



wwPDB X-ray Structure Validation Summary Report ⓘ

Mar 5, 2026 – 02:33 PM UTC

PDB ID : 3BEJ / pdb_00003bej
Title : Structure of human FXR in complex with MFA-1 and co-activator peptide
Authors : Soisson, S.M.; Parthasarathy, G.; Becker, J.W.
Deposited on : 2007-11-19
Resolution : 1.90 Å(reported)

This is a wwPDB X-ray Structure Validation Summary Report for a publicly released PDB entry.

We welcome your comments at validation@mail.wwpdb.org

A user guide is available at

<https://www.wwpdb.org/validation/2017/XrayValidationReportHelp>

with specific help available everywhere you see the ⓘ symbol.

The types of validation reports are described at

<http://www.wwpdb.org/validation/2017/FAQs#types>.

The following versions of software and data (see [references ⓘ](#)) were used in the production of this report:

MolProbity : 4-5-2 with Phenix2.0
Mogul : 2022.3.0, CSD as543be (2022)
Xtrriage (Phenix) : 2.0
EDS : 3.0
Buster-report : wwPDB partial adaption of 1.1.7 (2018)
Percentile statistics : 20250101.v01 (using entries in the PDB archive January 1st 2025)
CCP4 : 9.0.010 (Gargrove)
Density-Fitness : 1.0.12
Ideal geometry (proteins) : Engh & Huber (2001)
Ideal geometry (DNA, RNA) : Parkinson et al. (1996)
Validation Pipeline (wwPDB-VP) : 2.49

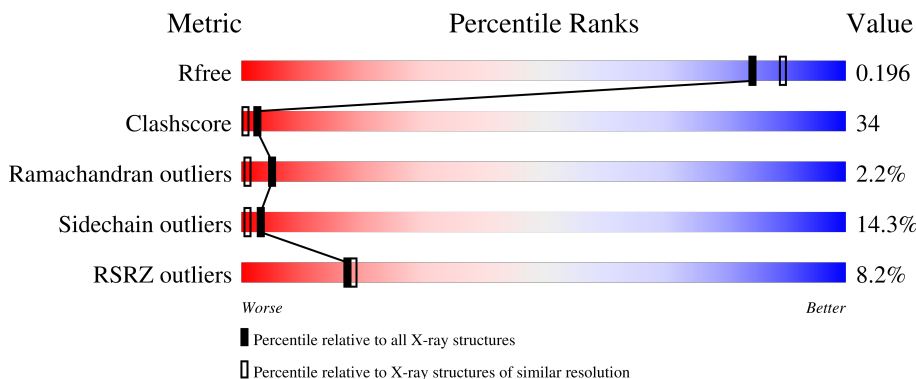
1 Overall quality at a glance

The following experimental techniques were used to determine the structure:

X-RAY DIFFRACTION

The reported resolution of this entry is 1.90 Å.

Percentile scores (ranging between 0-100) for global validation metrics of the entry are shown in the following graphic. The table shows the number of entries on which the scores are based.



Metric	Whole archive (#Entries)	Similar resolution (#Entries, resolution range(Å))
R_{free}	180053	7789 (1.90-1.90)
Clashscore	190562	8410 (1.90-1.90)
Ramachandran outliers	187476	8333 (1.90-1.90)
Sidechain outliers	187428	8333 (1.90-1.90)
RSRZ outliers	180081	7790 (1.90-1.90)

The table below summarises the geometric issues observed across the polymeric chains and their fit to the electron density. The red, orange, yellow and green segments of the lower bar indicate the fraction of residues that contain outliers for ≥ 3 , 2, 1 and 0 types of geometric quality criteria respectively. A grey segment represents the fraction of residues that are not modelled. The numeric value for each fraction is indicated below the corresponding segment, with a dot representing fractions $\leq 5\%$. The upper red bar (where present) indicates the fraction of residues that have poor fit to the electron density. The numeric value is given above the bar.

Mol	Chain	Length	Quality of chain
1	A	238	
1	B	238	
2	E	25	
2	F	25	

2 Entry composition [i](#)

There are 5 unique types of molecules in this entry. The entry contains 4349 atoms, of which 0 are hydrogens and 0 are deuteriums.

In the tables below, the ZeroOcc column contains the number of atoms modelled with zero occupancy, the AltConf column contains the number of residues with at least one atom in alternate conformation and the Trace column contains the number of residues modelled with at most 2 atoms.

- Molecule 1 is a protein called Bile acid receptor.

Mol	Chain	Residues	Atoms					ZeroOcc	AltConf	Trace
			Total	C	N	O	S			
1	A	224	Total 1842	C 1178	N 310	O 343	S 11	0	0	0
1	B	228	Total 1872	C 1197	N 314	O 350	S 11	0	0	0

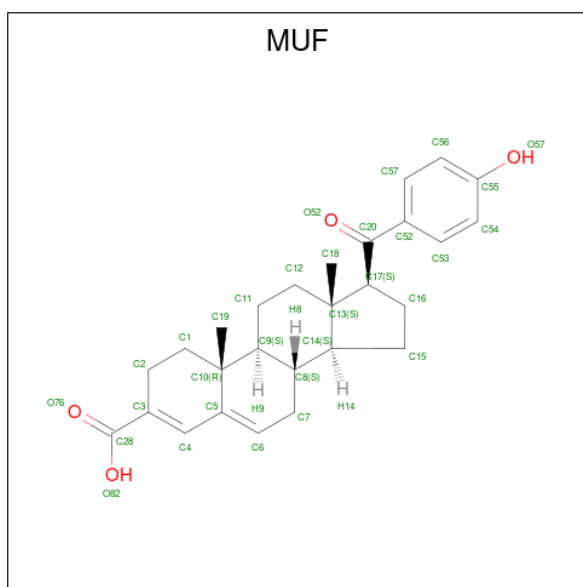
- Molecule 2 is a protein called Nuclear receptor coactivator 1.

Mol	Chain	Residues	Atoms				ZeroOcc	AltConf	Trace
			Total	C	N	O			
2	E	11	Total 101	C 64	N 23	O 14	0	0	0
2	F	12	Total 108	C 68	N 24	O 16	0	0	0

- Molecule 3 is YTTRIUM (III) ION (CCD ID: YT3) (formula: Y).

Mol	Chain	Residues	Atoms	ZeroOcc	AltConf
3	A	1	Total Y 1 1	0	0
3	B	1	Total Y 1 1	0	0

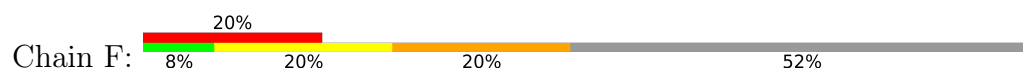
- Molecule 4 is (8alpha,10alpha,13alpha,17beta)-17-[(4-hydroxyphenyl)carbonyl]androsta-3,5-diene-3-carboxylic acid (CCD ID: MUF) (formula: C₂₇H₃₂O₄).



Mol	Chain	Residues	Atoms	ZeroOcc	AltConf
4	A	1	Total C O 31 27 4	0	0
4	B	1	Total C O 31 27 4	0	0

- Molecule 5 is water.

Mol	Chain	Residues	Atoms	ZeroOcc	AltConf
5	A	141	Total O 141 141	0	0
5	B	213	Total O 213 213	0	0
5	E	4	Total O 4 4	0	0
5	F	4	Total O 4 4	0	0



CYS	
PRO	
SER	
SER	
HIS	
SER	
SER	
LEU	
T684	
E685	
R686	
H687	
V688	
I689	
L690	
H691	
R692	
L693	
L694	
Q695	
GLU	
GLY	
SER	
PRO	
SER	

4 Data and refinement statistics

Property	Value	Source
Space group	P 21 21 21	Depositor
Cell constants a, b, c, α , β , γ	41.64Å 90.89Å 129.65Å 90.00° 90.00° 90.00°	Depositor
Resolution (Å)	39.65 – 1.90 39.65 – 1.90	Depositor EDS
% Data completeness (in resolution range)	99.3 (39.65-1.90) 99.9 (39.65-1.90)	Depositor EDS
R_{merge}	0.07	Depositor
R_{sym}	(Not available)	Depositor
$\langle I/\sigma(I) \rangle$ ¹	3.35 (at 1.89Å)	Xtrriage
Refinement program	TNT, BUSTER-TNT 2.1.1	Depositor
R, R_{free}	0.200 , 0.254 (Not available) , 0.196	Depositor DCC
R_{free} test set	3998 reflections (10.00%)	wwPDB-VP
Wilson B-factor (Å ²)	25.2	Xtrriage
Anisotropy	0.482	Xtrriage
Bulk solvent k_{sol} (e/Å ³), B_{sol} (Å ²)	0.34 , 57.5	EDS
L-test for twinning ²	$\langle L \rangle = 0.48$, $\langle L^2 \rangle = 0.32$	Xtrriage
Estimated twinning fraction	No twinning to report.	Xtrriage
F_o, F_c correlation	0.95	EDS
Total number of atoms	4349	wwPDB-VP
Average B, all atoms (Å ²)	34.0	wwPDB-VP

Xtrriage's analysis on translational NCS is as follows: *The largest off-origin peak in the Patterson function is 5.48% of the height of the origin peak. No significant pseudotranslation is detected.*

¹Intensities estimated from amplitudes.

²Theoretical values of $\langle |L| \rangle$, $\langle L^2 \rangle$ for acentric reflections are 0.5, 0.333 respectively for untwinned datasets, and 0.375, 0.2 for perfectly twinned datasets.

5 Model quality [i](#)

5.1 Standard geometry [i](#)

Bond lengths and bond angles in the following residue types are not validated in this section: MUF, YT3

The Z score for a bond length (or angle) is the number of standard deviations the observed value is removed from the expected value. A bond length (or angle) with $|Z| > 5$ is considered an outlier worth inspection. RMSZ is the root-mean-square of all Z scores of the bond lengths (or angles).

Mol	Chain	Bond lengths		Bond angles	
		RMSZ	# Z >5	RMSZ	# Z >5
1	A	0.76	1/1880 (0.1%)	1.06	10/2537 (0.4%)
1	B	0.90	3/1912 (0.2%)	1.12	16/2583 (0.6%)
2	E	0.52	0/102	1.36	2/134 (1.5%)
2	F	0.67	0/109	1.20	0/144
All	All	0.82	4/4003 (0.1%)	1.10	28/5398 (0.5%)

All (4) bond length outliers are listed below:

Mol	Chain	Res	Type	Atoms	Z	Observed(Å)	Ideal(Å)
1	A	365	MET	SD-CE	-8.62	1.57	1.79
1	B	365	MET	SD-CE	-6.44	1.63	1.79
1	B	328	MET	SD-CE	5.55	1.93	1.79
1	B	450	MET	SD-CE	-5.36	1.66	1.79

The worst 5 of 28 bond angle outliers are listed below:

Mol	Chain	Res	Type	Atoms	Z	Observed(°)	Ideal(°)
1	A	315	ASP	N-CA-C	-10.49	99.75	112.54
1	B	260	TYR	N-CA-C	8.28	122.93	109.76
2	E	694	LEU	N-CA-C	-7.72	104.79	112.97
1	B	263	GLN	N-CA-C	7.51	120.27	110.43
1	B	275	LYS	N-CA-C	7.42	123.24	113.30

There are no chirality outliers.

There are no planarity outliers.

5.2 Too-close contacts [i](#)

In the following table, the Non-H and H(model) columns list the number of non-hydrogen atoms and hydrogen atoms in the chain respectively. The H(added) column lists the number of hydrogen atoms added and optimized by MolProbity. The Clashes column lists the number of clashes within the asymmetric unit, whereas Symm-Clashes lists symmetry-related clashes.

Mol	Chain	Non-H	H(model)	H(added)	Clashes	Symm-Clashes
1	A	1842	0	1838	136	0
1	B	1872	0	1868	101	0
2	E	101	0	110	33	0
2	F	108	0	117	20	0
3	A	1	0	0	0	0
3	B	1	0	0	0	0
4	A	31	0	30	1	0
4	B	31	0	31	0	0
5	A	141	0	0	17	0
5	B	213	0	0	9	0
5	E	4	0	0	1	0
5	F	4	0	0	2	0
All	All	4349	0	3994	271	0

The all-atom clashscore is defined as the number of clashes found per 1000 atoms (including hydrogen atoms). The all-atom clashscore for this structure is 34.

The worst 5 of 271 close contacts within the same asymmetric unit are listed below, sorted by their clash magnitude.

Atom-1	Atom-2	Interatomic distance (Å)	Clash overlap (Å)
1:A:385:LEU:HD12	1:A:437:LEU:HD21	1.22	1.14
2:E:685:GLU:HB3	2:E:687:HIS:HD1	1.05	1.12
1:A:266:PRO:HB2	1:A:269:ILE:HD13	1.25	1.10
1:B:385:LEU:HD11	1:B:437:LEU:HD21	1.32	1.06
1:B:423:GLN:HB2	1:B:424:PRO:HD3	1.39	1.05

There are no symmetry-related clashes.

5.3 Torsion angles [i](#)

5.3.1 Protein backbone [i](#)

In the following table, the Percentiles column shows the percent Ramachandran outliers of the chain as a percentile score with respect to all X-ray entries followed by that with respect to entries of similar resolution.

The Analysed column shows the number of residues for which the backbone conformation was analysed, and the total number of residues.

Mol	Chain	Analysed	Favoured	Allowed	Outliers	Percentiles	
1	A	220/238 (92%)	207 (94%)	9 (4%)	4 (2%)	6	1
1	B	226/238 (95%)	216 (96%)	7 (3%)	3 (1%)	9	3
2	E	9/25 (36%)	5 (56%)	1 (11%)	3 (33%)	0	0
2	F	10/25 (40%)	7 (70%)	3 (30%)	0	100	100
All	All	465/526 (88%)	435 (94%)	20 (4%)	10 (2%)	5	1

5 of 10 Ramachandran outliers are listed below:

Mol	Chain	Res	Type
1	A	313	HIS
1	B	423	GLN
1	B	425	GLU
2	E	692	ARG
2	E	686	ARG

5.3.2 Protein sidechains [i](#)

In the following table, the Percentiles column shows the percent sidechain outliers of the chain as a percentile score with respect to all X-ray entries followed by that with respect to entries of similar resolution.

The Analysed column shows the number of residues for which the sidechain conformation was analysed, and the total number of residues.

Mol	Chain	Analysed	Rotameric	Outliers	Percentiles	
1	A	207/221 (94%)	178 (86%)	29 (14%)	3	1
1	B	211/221 (96%)	186 (88%)	25 (12%)	5	2
2	E	11/24 (46%)	7 (64%)	4 (36%)	0	0
2	F	12/24 (50%)	7 (58%)	5 (42%)	0	0
All	All	441/490 (90%)	378 (86%)	63 (14%)	3	1

5 of 63 residues with a non-rotameric sidechain are listed below:

Mol	Chain	Res	Type
1	A	471	VAL
2	E	690	LEU
1	B	285	LEU

Continued on next page...

Continued from previous page...

Mol	Chain	Res	Type
2	E	685	GLU
2	F	686	ARG

Sometimes sidechains can be flipped to improve hydrogen bonding and reduce clashes. 5 of 10 such sidechains are listed below:

Mol	Chain	Res	Type
1	B	309	GLN
1	B	344	HIS
2	F	687	HIS
1	A	447	HIS
1	A	457	ASN

5.3.3 RNA [i](#)

There are no RNA molecules in this entry.

5.4 Non-standard residues in protein, DNA, RNA chains [i](#)

There are no non-standard protein/DNA/RNA residues in this entry.

5.5 Carbohydrates [i](#)

There are no oligosaccharides in this entry.

5.6 Ligand geometry [i](#)

Of 4 ligands modelled in this entry, 2 are monoatomic - leaving 2 for Mogul analysis.

In the following table, the Counts columns list the number of bonds (or angles) for which Mogul statistics could be retrieved, the number of bonds (or angles) that are observed in the model and the number of bonds (or angles) that are defined in the Chemical Component Dictionary. The Link column lists molecule types, if any, to which the group is linked. The Z score for a bond length (or angle) is the number of standard deviations the observed value is removed from the expected value. A bond length (or angle) with $|Z| > 2$ is considered an outlier worth inspection. RMSZ is the root-mean-square of all Z scores of the bond lengths (or angles).

Mol	Type	Chain	Res	Link	Bond lengths			Bond angles		
					Counts	RMSZ	$\# Z > 2$	Counts	RMSZ	$\# Z > 2$
4	MUF	B	1	-	35,35,35	1.92	11 (31%)	51,55,55	2.08	16 (31%)
4	MUF	A	473	-	35,35,35	2.05	14 (40%)	51,55,55	2.02	11 (21%)

In the following table, the Chirals column lists the number of chiral outliers, the number of chiral centers analysed, the number of these observed in the model and the number defined in the Chemical Component Dictionary. Similar counts are reported in the Torsion and Rings columns. '-' means no outliers of that kind were identified.

Mol	Type	Chain	Res	Link	Chirals	Torsions	Rings
4	MUF	B	1	-	-	4/12/70/70	0/5/5/5
4	MUF	A	473	-	-	1/12/70/70	0/5/5/5

The worst 5 of 25 bond length outliers are listed below:

Mol	Chain	Res	Type	Atoms	Z	Observed(Å)	Ideal(Å)
4	B	1	MUF	O76-C28	5.12	1.35	1.22
4	A	473	MUF	O76-C28	4.86	1.34	1.22
4	A	473	MUF	C6-C5	3.26	1.36	1.33
4	A	473	MUF	C7-C8	3.18	1.58	1.53
4	A	473	MUF	C19-C10	3.03	1.59	1.54

The worst 5 of 27 bond angle outliers are listed below:

Mol	Chain	Res	Type	Atoms	Z	Observed(°)	Ideal(°)
4	B	1	MUF	O76-C28-C3	-5.87	111.34	121.64
4	A	473	MUF	O76-C28-C3	-5.78	111.50	121.64
4	A	473	MUF	C13-C17-C20	-5.48	106.86	114.93
4	B	1	MUF	C13-C17-C20	-5.04	107.51	114.93
4	A	473	MUF	C16-C17-C13	-4.79	99.92	104.21

There are no chirality outliers.

All (5) torsion outliers are listed below:

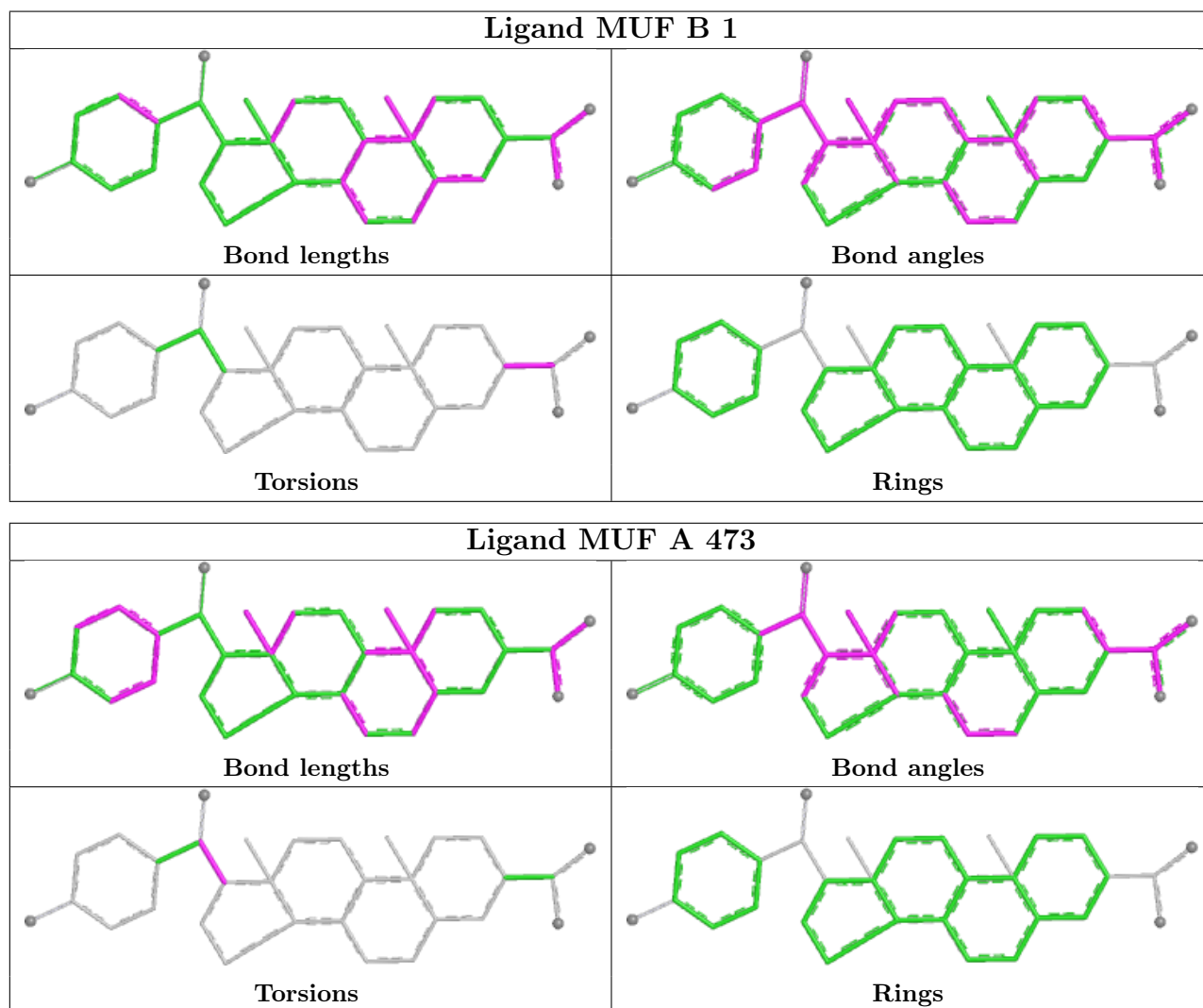
Mol	Chain	Res	Type	Atoms
4	B	1	MUF	O76-C28-C3-C2
4	B	1	MUF	O82-C28-C3-C2
4	B	1	MUF	O76-C28-C3-C4
4	B	1	MUF	O82-C28-C3-C4
4	A	473	MUF	C13-C17-C20-C52

There are no ring outliers.

1 monomer is involved in 1 short contact:

Mol	Chain	Res	Type	Clashes	Symm-Clashes
4	A	473	MUF	1	0

The following is a two-dimensional graphical depiction of Mogul quality analysis of bond lengths, bond angles, torsion angles, and ring geometry for all instances of the Ligand of Interest. In addition, ligands with molecular weight > 250 and outliers as shown on the validation Tables will also be included. For torsion angles, if less than 5% of the Mogul distribution of torsion angles is within 10 degrees of the torsion angle in question, then that torsion angle is considered an outlier. Any bond that is central to one or more torsion angles identified as an outlier by Mogul will be highlighted in the graph. For rings, the root-mean-square deviation (RMSD) between the ring in question and similar rings identified by Mogul is calculated over all ring torsion angles. If the average RMSD is greater than 60 degrees and the minimal RMSD between the ring in question and any Mogul-identified rings is also greater than 60 degrees, then that ring is considered an outlier. The outliers are highlighted in purple. The color gray indicates Mogul did not find sufficient equivalents in the CSD to analyse the geometry.



5.7 Other polymers [i](#)

There are no such residues in this entry.

5.8 Polymer linkage issues

There are no chain breaks in this entry.

6 Fit of model and data [i](#)

6.1 Protein, DNA and RNA chains [i](#)

In the following table, the column labelled ‘#RSRZ> 2’ contains the number (and percentage) of RSRZ outliers, followed by percent RSRZ outliers for the chain as percentile scores relative to all X-ray entries and entries of similar resolution. The OWAB column contains the minimum, median, 95th percentile and maximum values of the occupancy-weighted average B-factor per residue. The column labelled ‘Q< 0.9’ lists the number of (and percentage) of residues with an average occupancy less than 0.9.

Mol	Chain	Analysed	<RSRZ>	#RSRZ>2	OWAB(Å ²)	Q<0.9
1	A	224/238 (94%)	0.60	21 (9%) 14 14	16, 35, 61, 75	0
1	B	228/238 (95%)	0.15	7 (3%) 51 55	16, 25, 50, 78	0
2	E	11/25 (44%)	2.07	6 (54%) 0 0	46, 52, 67, 69	0
2	F	12/25 (48%)	1.39	5 (41%) 0 0	30, 39, 62, 70	0
All	All	475/526 (90%)	0.44	39 (8%) 17 18	16, 31, 61, 78	0

The worst 5 of 39 RSRZ outliers are listed below:

Mol	Chain	Res	Type	RSRZ
1	A	343	GLY	6.7
1	B	424	PRO	4.9
1	B	423	GLN	4.9
1	A	400	ASP	3.9
1	B	278	PHE	3.8

6.2 Non-standard residues in protein, DNA, RNA chains [i](#)

There are no non-standard protein/DNA/RNA residues in this entry.

6.3 Carbohydrates [i](#)

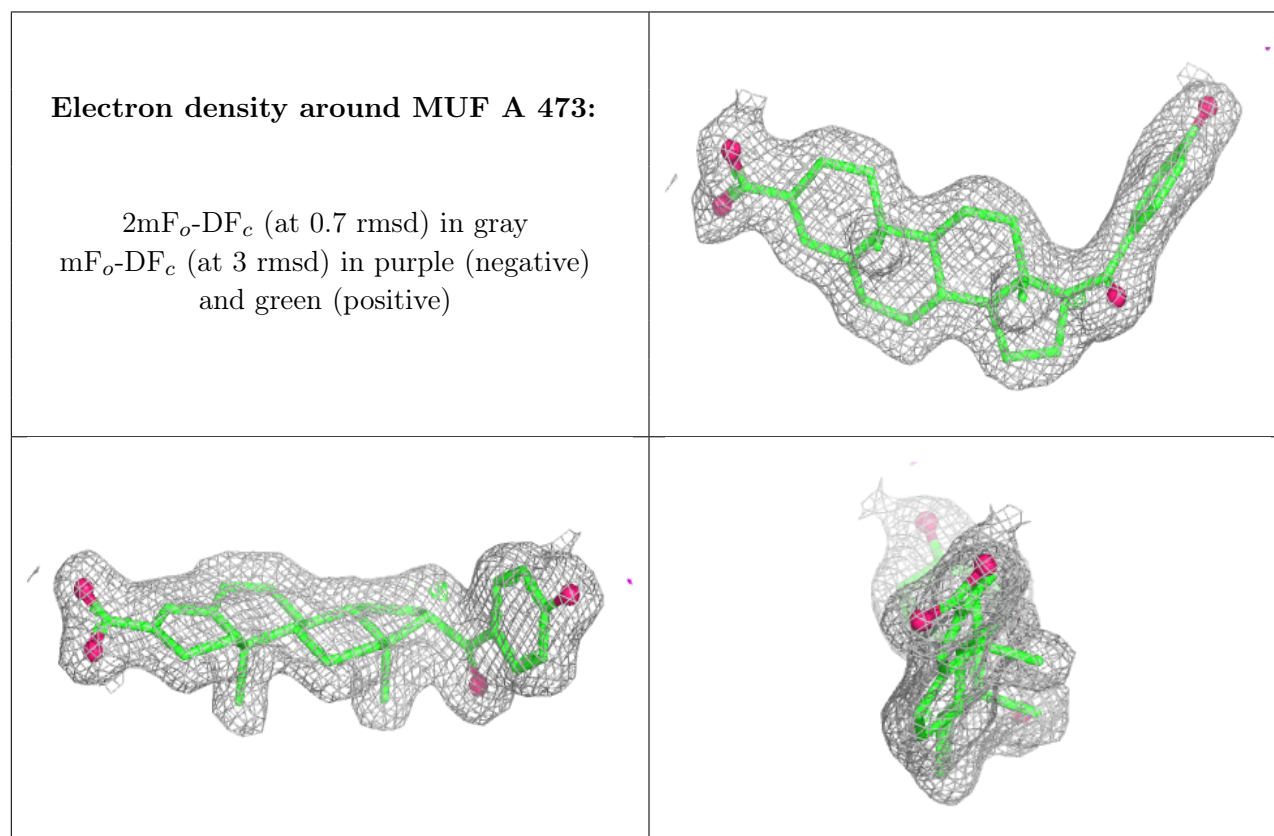
There are no oligosaccharides in this entry.

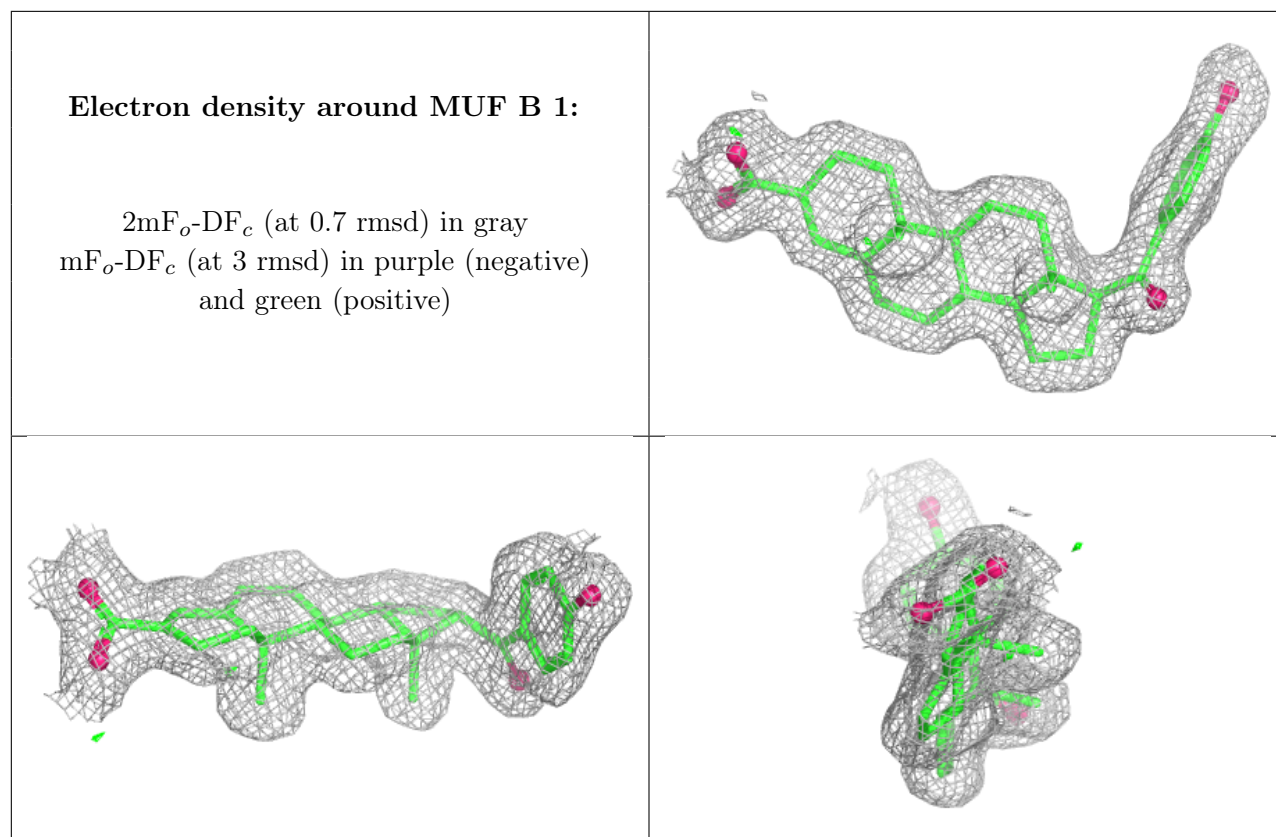
6.4 Ligands [i](#)

In the following table, the Atoms column lists the number of modelled atoms in the group and the number defined in the chemical component dictionary. The B-factors column lists the minimum, median, 95th percentile and maximum values of B factors of atoms in the group. The column labelled ‘Q< 0.9’ lists the number of atoms with occupancy less than 0.9.

Mol	Type	Chain	Res	Atoms	RSCC	RSR	B-factors(\AA^2)	Q<0.9
4	MUF	A	473	31/31	0.94	0.07	20,28,37,38	0
4	MUF	B	1	31/31	0.96	0.06	12,20,26,32	0
3	YT3	A	1	1/1	1.00	0.02	19,19,19,19	0
3	YT3	B	2	1/1	1.00	0.02	18,18,18,18	0

The following is a graphical depiction of the model fit to experimental electron density of all instances of the Ligand of Interest. In addition, ligands with molecular weight > 250 and outliers as shown on the geometry validation Tables will also be included. Each fit is shown from different orientation to approximate a three-dimensional view.





6.5 Other polymers [i](#)

There are no such residues in this entry.