



# Full wwPDB X-ray Structure Validation Report ⓘ

Mar 6, 2026 – 03:31 PM UTC

PDB ID : 2BJS / pdb\_00002bjs  
Title : Isopenicillin N synthase C-terminal truncation mutant  
Authors : McNeill, L.A.; Sami, M.; Clifton, I.J.; Burzlaff, N.I.  
Deposited on : 2005-02-07  
Resolution : 1.30 Å(reported)

This is a Full wwPDB X-ray Structure Validation Report for a publicly released PDB entry.

We welcome your comments at [validation@mail.wwpdb.org](mailto:validation@mail.wwpdb.org)

A user guide is available at

<https://www.wwpdb.org/validation/2017/XrayValidationReportHelp>

with specific help available everywhere you see the ⓘ symbol.

The types of validation reports are described at

<http://www.wwpdb.org/validation/2017/FAQs#types>.

---

The following versions of software and data (see [references ⓘ](#)) were used in the production of this report:

MolProbity : 4-5-2 with Phenix2.0  
Mogul : 2022.3.0, CSD as543be (2022)  
Xtrriage (Phenix) : 2.0  
EDS : 3.0  
Buster-report : wwPDB partial adaption of 1.1.7 (2018)  
Percentile statistics : 20250101.v01 (using entries in the PDB archive January 1st 2025)  
CCP4 : 9.0.010 (Gargrove)  
Density-Fitness : 1.0.12  
Ideal geometry (proteins) : Engh & Huber (2001)  
Ideal geometry (DNA, RNA) : Parkinson et al. (1996)  
Validation Pipeline (wwPDB-VP) : 2.49

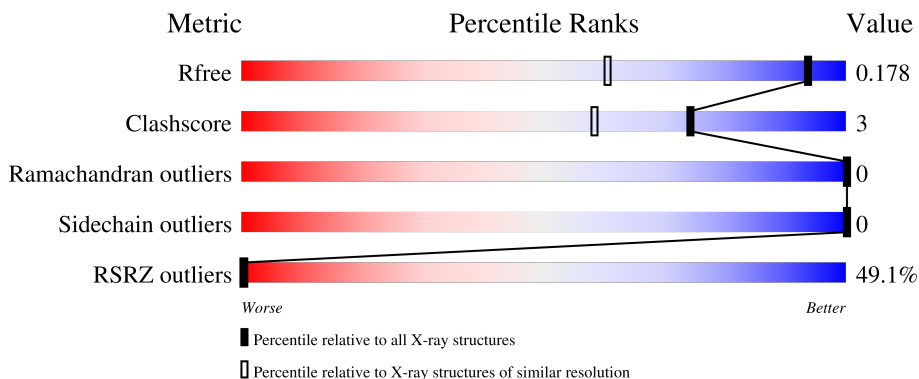
# 1 Overall quality at a glance

The following experimental techniques were used to determine the structure:

*X-RAY DIFFRACTION*

The reported resolution of this entry is 1.30 Å.

Percentile scores (ranging between 0-100) for global validation metrics of the entry are shown in the following graphic. The table shows the number of entries on which the scores are based.



Metric	Whole archive (#Entries)	Similar resolution (#Entries, resolution range(Å))
$R_{free}$	180053	1553 (1.30-1.30)
Clashscore	190562	1595 (1.30-1.30)
Ramachandran outliers	187476	1551 (1.30-1.30)
Sidechain outliers	187428	1551 (1.30-1.30)
RSRZ outliers	180081	1549 (1.30-1.30)

The table below summarises the geometric issues observed across the polymeric chains and their fit to the electron density. The red, orange, yellow and green segments of the lower bar indicate the fraction of residues that contain outliers for  $\geq 3$ , 2, 1 and 0 types of geometric quality criteria respectively. A grey segment represents the fraction of residues that are not modelled. The numeric value for each fraction is indicated below the corresponding segment, with a dot representing fractions  $\leq 5\%$ . The upper red bar (where present) indicates the fraction of residues that have poor fit to the electron density. The numeric value is given above the bar.

Mol	Chain	Length	Quality of chain
1	A	325	

## 2 Entry composition [i](#)

There are 6 unique types of molecules in this entry. The entry contains 3174 atoms, of which 0 are hydrogens and 0 are deuteriums.

In the tables below, the ZeroOcc column contains the number of atoms modelled with zero occupancy, the AltConf column contains the number of residues with at least one atom in alternate conformation and the Trace column contains the number of residues modelled with at most 2 atoms.

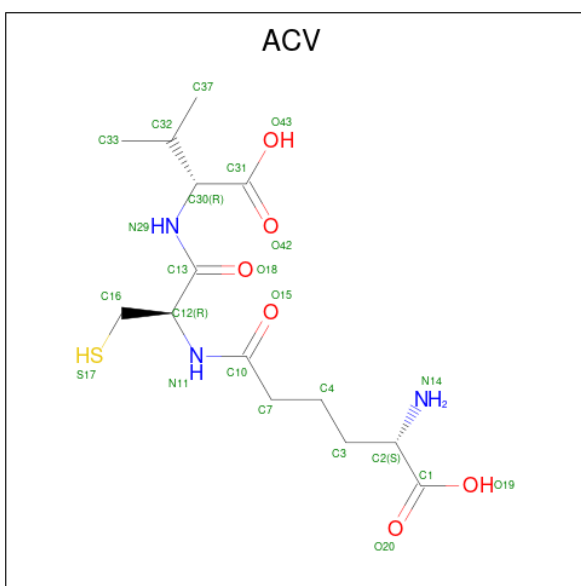
- Molecule 1 is a protein called ISOPENICILLIN N SYNTHETASE.

Mol	Chain	Residues	Atoms					ZeroOcc	AltConf	Trace
			Total	C	N	O	S			
1	A	320	2576	1648	432	491	5	0	1	0

- Molecule 2 is FE (III) ION (CCD ID: FE) (formula: Fe).

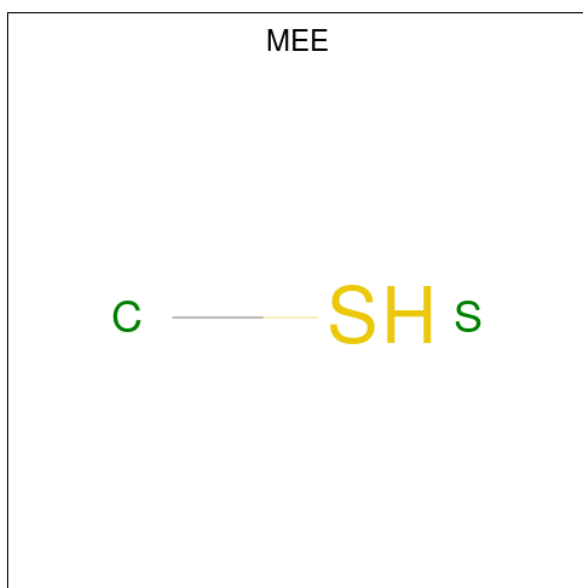
Mol	Chain	Residues	Atoms		ZeroOcc	AltConf
			Total	Fe		
2	A	1	1	1	0	0

- Molecule 3 is L-D-(A-AMINOADIPOYL)-L-CYSTEINYL-D-VALINE (CCD ID: ACV) (formula: C<sub>14</sub>H<sub>25</sub>N<sub>3</sub>O<sub>6</sub>S).



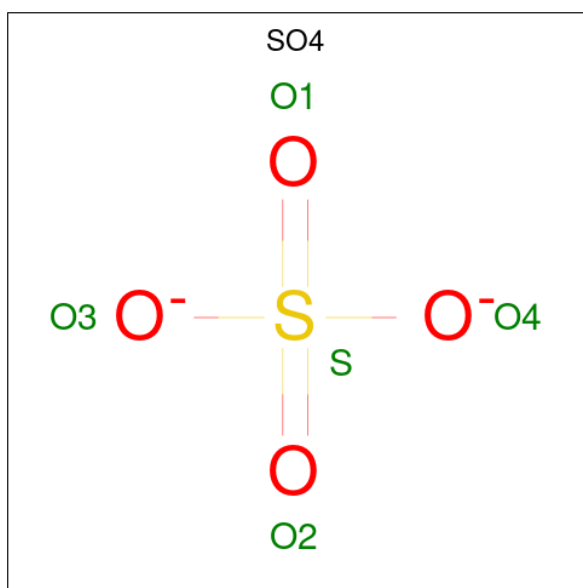
Mol	Chain	Residues	Atoms					ZeroOcc	AltConf
			Total	C	N	O	S		
3	A	1	27	17	3	6	1	0	1
3	A	1	17	10	2	4	1	0	0

- Molecule 4 is METHANETHIOL (CCD ID: MEE) (formula: CH<sub>4</sub>S).



Mol	Chain	Residues	Atoms			ZeroOcc	AltConf
			Total	C	S		
4	A	1	2	1	1	0	0

- Molecule 5 is SULFATE ION (CCD ID: SO4) (formula: O<sub>4</sub>S).



Mol	Chain	Residues	Atoms			ZeroOcc	AltConf
			Total	O	S		
5	A	1	5	4	1	0	0

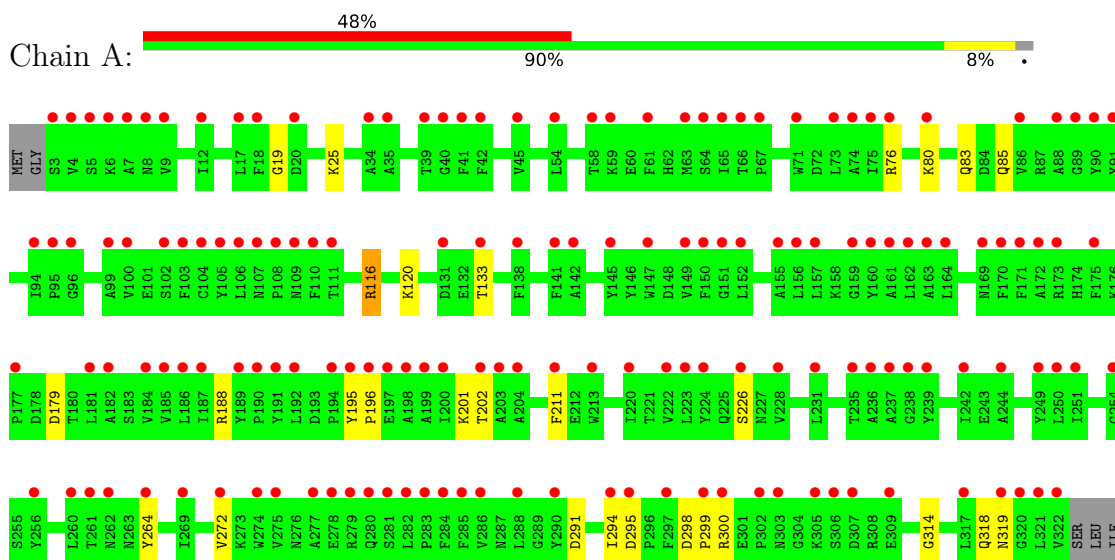
- Molecule 6 is water.

<b>Mol</b>	<b>Chain</b>	<b>Residues</b>	<b>Atoms</b>		<b>ZeroOcc</b>	<b>AltConf</b>
6	A	546	Total 546	O 546	0	0

### 3 Residue-property plots i

These plots are drawn for all protein, RNA, DNA and oligosaccharide chains in the entry. The first graphic for a chain summarises the proportions of the various outlier classes displayed in the second graphic. The second graphic shows the sequence view annotated by issues in geometry and electron density. Residues are color-coded according to the number of geometric quality criteria for which they contain at least one outlier: green = 0, yellow = 1, orange = 2 and red = 3 or more. A red dot above a residue indicates a poor fit to the electron density ( $RSRZ > 2$ ). Stretches of 2 or more consecutive residues without any outlier are shown as a green connector. Residues present in the sample, but not in the model, are shown in grey.

- Molecule 1: ISOPENICILLIN N SYNTHETASE



## 4 Data and refinement statistics

Property	Value	Source
Space group	P 21 21 21	Depositor
Cell constants a, b, c, $\alpha$ , $\beta$ , $\gamma$	47.15Å 71.13Å 100.99Å 90.00° 90.00° 90.00°	Depositor
Resolution (Å)	58.12 – 1.30 58.12 – 1.30	Depositor EDS
% Data completeness (in resolution range)	98.0 (58.12-1.30) 98.0 (58.12-1.30)	Depositor EDS
$R_{merge}$	0.06	Depositor
$R_{sym}$	(Not available)	Depositor
$\langle I/\sigma(I) \rangle$ <sup>1</sup>	2.99 (at 1.30Å)	Xtrriage
Refinement program	REFMAC 5.2.0003	Depositor
R, $R_{free}$	0.139 , 0.164 0.154 , 0.178	Depositor DCC
$R_{free}$ test set	3297 reflections (3.99%)	wwPDB-VP
Wilson B-factor (Å <sup>2</sup> )	9.5	Xtrriage
Anisotropy	0.253	Xtrriage
Bulk solvent $k_{sol}$ (e/Å <sup>3</sup> ), $B_{sol}$ (Å <sup>2</sup> )	0.38 , 43.4	EDS
L-test for twinning <sup>2</sup>	$\langle  L  \rangle = 0.49$ , $\langle L^2 \rangle = 0.32$	Xtrriage
Estimated twinning fraction	No twinning to report.	Xtrriage
$F_o, F_c$ correlation	0.93	EDS
Total number of atoms	3174	wwPDB-VP
Average B, all atoms (Å <sup>2</sup> )	20.0	wwPDB-VP

Xtrriage's analysis on translational NCS is as follows: *The largest off-origin peak in the Patterson function is 5.38% of the height of the origin peak. No significant pseudotranslation is detected.*

<sup>1</sup>Intensities estimated from amplitudes.

<sup>2</sup>Theoretical values of  $\langle |L| \rangle$ ,  $\langle L^2 \rangle$  for acentric reflections are 0.5, 0.333 respectively for untwinned datasets, and 0.375, 0.2 for perfectly twinned datasets.

## 5 Model quality [i](#)

### 5.1 Standard geometry [i](#)

Bond lengths and bond angles in the following residue types are not validated in this section: FE, ACV, SO4, MEE

The Z score for a bond length (or angle) is the number of standard deviations the observed value is removed from the expected value. A bond length (or angle) with  $|Z| > 5$  is considered an outlier worth inspection. RMSZ is the root-mean-square of all Z scores of the bond lengths (or angles).

Mol	Chain	Bond lengths		Bond angles	
		RMSZ	# Z  >5	RMSZ	# Z  >5
1	A	1.41	11/2655 (0.4%)	1.19	6/3617 (0.2%)

All (11) bond length outliers are listed below:

Mol	Chain	Res	Type	Atoms	Z	Observed(Å)	Ideal(Å)
1	A	294	ILE	CA-CB	-10.89	1.41	1.54
1	A	179	ASP	CB-CG	-7.63	1.32	1.52
1	A	300	ARG	CA-C	7.44	1.62	1.52
1	A	211	PHE	N-CA	7.23	1.54	1.46
1	A	120	LYS	CG-CD	-6.49	1.32	1.52
1	A	120	LYS	CB-CG	-6.38	1.33	1.52
1	A	196	PRO	CA-C	6.37	1.59	1.52
1	A	201	LYS	N-CA	-5.76	1.39	1.45
1	A	116	ARG	NE-CZ	-5.56	1.26	1.33
1	A	188	ARG	NE-CZ	-5.49	1.27	1.33
1	A	85	GLN	CA-C	-5.14	1.46	1.52

All (6) bond angle outliers are listed below:

Mol	Chain	Res	Type	Atoms	Z	Observed(°)	Ideal(°)
1	A	195	TYR	CA-C-O	-7.94	113.15	119.66
1	A	202	THR	OG1-CB-CG2	-6.46	96.39	109.30
1	A	226	SER	CB-CA-C	-6.19	95.79	110.02
1	A	300	ARG	N-CA-C	5.74	120.28	113.28
1	A	298	ASP	CA-C-N	5.41	126.12	120.12
1	A	298	ASP	C-N-CA	5.41	126.12	120.12

There are no chirality outliers.

There are no planarity outliers.

## 5.2 Too-close contacts [i](#)

In the following table, the Non-H and H(model) columns list the number of non-hydrogen atoms and hydrogen atoms in the chain respectively. The H(added) column lists the number of hydrogen atoms added and optimized by MolProbity. The Clashes column lists the number of clashes within the asymmetric unit, whereas Symm-Clashes lists symmetry-related clashes.

Mol	Chain	Non-H	H(model)	H(added)	Clashes	Symm-Clashes
1	A	2576	0	2443	15	0
2	A	1	0	0	0	0
3	A	44	0	29	1	0
4	A	2	0	0	1	0
5	A	5	0	0	0	0
6	A	546	0	0	10	1
All	All	3174	0	2472	16	1

The all-atom clashscore is defined as the number of clashes found per 1000 atoms (including hydrogen atoms). The all-atom clashscore for this structure is 3.

All (16) close contacts within the same asymmetric unit are listed below, sorted by their clash magnitude.

Atom-1	Atom-2	Interatomic distance (Å)	Clash overlap (Å)
1:A:319:ASN:HB3	6:A:2528:HOH:O	1.80	0.81
1:A:314:GLY:O	1:A:318[B]:GLN:HG2	1.82	0.78
1:A:318[A]:GLN:NE2	6:A:2524:HOH:O	2.22	0.73
1:A:319:ASN:HB3	6:A:2526:HOH:O	1.89	0.71
4:A:1326:MEE:C	6:A:2014:HOH:O	2.40	0.68
1:A:83:GLN:OE1	6:A:2208:HOH:O	2.14	0.66
1:A:19:GLY:O	1:A:25:LYS:HE3	2.00	0.62
1:A:76:ARG:NH1	6:A:2208:HOH:O	2.34	0.59
1:A:295:ASP:HB3	6:A:2496:HOH:O	2.08	0.51
1:A:133:THR:HG23	6:A:2293:HOH:O	2.10	0.50
1:A:264:TYR:CD2	1:A:299:PRO:HG2	2.48	0.49
1:A:116:ARG:NH2	1:A:291:ASP:OD2	2.50	0.45
1:A:19:GLY:O	1:A:25:LYS:CE	2.65	0.45
1:A:80:LYS:HE3	6:A:2064:HOH:O	2.17	0.44
1:A:25:LYS:HE2	6:A:2038:HOH:O	2.19	0.43
1:A:272:VAL:CG2	3:A:1324[B]:ACV:H373	2.51	0.41

All (1) symmetry-related close contacts are listed below. The label for Atom-2 includes the symmetry operator and encoded unit-cell translations to be applied.

Atom-1	Atom-2	Interatomic distance (Å)	Clash overlap (Å)
6:A:2267:HOH:O	6:A:2476:HOH:O[1_655]	2.05	0.15

### 5.3 Torsion angles [i](#)

#### 5.3.1 Protein backbone [i](#)

In the following table, the Percentiles column shows the percent Ramachandran outliers of the chain as a percentile score with respect to all X-ray entries followed by that with respect to entries of similar resolution.

The Analysed column shows the number of residues for which the backbone conformation was analysed, and the total number of residues.

Mol	Chain	Analysed	Favoured	Allowed	Outliers	Percentiles
1	A	319/325 (98%)	310 (97%)	9 (3%)	0	<a href="#">100</a> <a href="#">100</a>

There are no Ramachandran outliers to report.

#### 5.3.2 Protein sidechains [i](#)

In the following table, the Percentiles column shows the percent sidechain outliers of the chain as a percentile score with respect to all X-ray entries followed by that with respect to entries of similar resolution.

The Analysed column shows the number of residues for which the sidechain conformation was analysed, and the total number of residues.

Mol	Chain	Analysed	Rotameric	Outliers	Percentiles
1	A	274/279 (98%)	274 (100%)	0	<a href="#">100</a> <a href="#">100</a>

There are no protein residues with a non-rotameric sidechain to report.

Sometimes sidechains can be flipped to improve hydrogen bonding and reduce clashes. All (2) such sidechains are listed below:

Mol	Chain	Res	Type
1	A	46	ASN
1	A	227	ASN

#### 5.3.3 RNA [i](#)

There are no RNA molecules in this entry.

## 5.4 Non-standard residues in protein, DNA, RNA chains [i](#)

There are no non-standard protein/DNA/RNA residues in this entry.

## 5.5 Carbohydrates [i](#)

There are no oligosaccharides in this entry.

## 5.6 Ligand geometry [i](#)

Of 6 ligands modelled in this entry, 1 is monoatomic - leaving 5 for Mogul analysis.

In the following table, the Counts columns list the number of bonds (or angles) for which Mogul statistics could be retrieved, the number of bonds (or angles) that are observed in the model and the number of bonds (or angles) that are defined in the Chemical Component Dictionary. The Link column lists molecule types, if any, to which the group is linked. The Z score for a bond length (or angle) is the number of standard deviations the observed value is removed from the expected value. A bond length (or angle) with  $|Z| > 2$  is considered an outlier worth inspection. RMSZ is the root-mean-square of all Z scores of the bond lengths (or angles).

Mol	Type	Chain	Res	Link	Bond lengths			Bond angles		
					Counts	RMSZ	# Z  > 2	Counts	RMSZ	# Z  > 2
3	ACV	A	1324[A]	-	22,23,23	1.02	1 (4%)	27,30,30	1.52	4 (14%)
3	ACV	A	1325	-	16,16,23	0.77	0	21,21,30	1.14	2 (9%)
3	ACV	A	1324[B]	-	22,23,23	1.03	1 (4%)	27,30,30	1.66	4 (14%)
4	MEE	A	1326	-	0,1,1	-	-	-	-	-
5	SO4	A	1327	-	4,4,4	0.91	0	6,6,6	2.08	2 (33%)

In the following table, the Chirals column lists the number of chiral outliers, the number of chiral centers analysed, the number of these observed in the model and the number defined in the Chemical Component Dictionary. Similar counts are reported in the Torsion and Rings columns. '-' means no outliers of that kind were identified.

Mol	Type	Chain	Res	Link	Chirals	Torsions	Rings
3	ACV	A	1325	-	-	0/22/22/32	-
3	ACV	A	1324[A]	-	-	10/32/32/32	-
3	ACV	A	1324[B]	-	-	7/32/32/32	-

All (2) bond length outliers are listed below:

Mol	Chain	Res	Type	Atoms	Z	Observed(Å)	Ideal(Å)
3	A	1324[A]	ACV	C16-C12	-2.48	1.50	1.53

*Continued on next page...*

Continued from previous page...

Mol	Chain	Res	Type	Atoms	Z	Observed(Å)	Ideal(Å)
3	A	1324[B]	ACV	C16-C12	-2.48	1.50	1.53

All (12) bond angle outliers are listed below:

Mol	Chain	Res	Type	Atoms	Z	Observed(°)	Ideal(°)
3	A	1324[B]	ACV	C32-C30-N29	-5.43	98.31	111.44
3	A	1324[A]	ACV	C32-C30-N29	4.37	122.02	111.44
5	A	1327	SO4	O4-S-O1	3.53	127.99	109.56
5	A	1327	SO4	O4-S-O2	-3.39	91.85	109.56
3	A	1324[A]	ACV	C12-C16-S17	-3.21	110.54	114.16
3	A	1324[B]	ACV	C12-C16-S17	-3.21	110.54	114.16
3	A	1325	ACV	O43-C31-O42	-2.64	118.10	124.08
3	A	1324[A]	ACV	C3-C4-C7	-2.28	107.19	113.26
3	A	1324[B]	ACV	C3-C4-C7	-2.28	107.19	113.26
3	A	1325	ACV	O43-C31-C30	2.23	121.88	114.15
3	A	1324[A]	ACV	C7-C10-N11	2.12	119.60	115.86
3	A	1324[B]	ACV	C7-C10-N11	2.12	119.60	115.86

There are no chirality outliers.

All (17) torsion outliers are listed below:

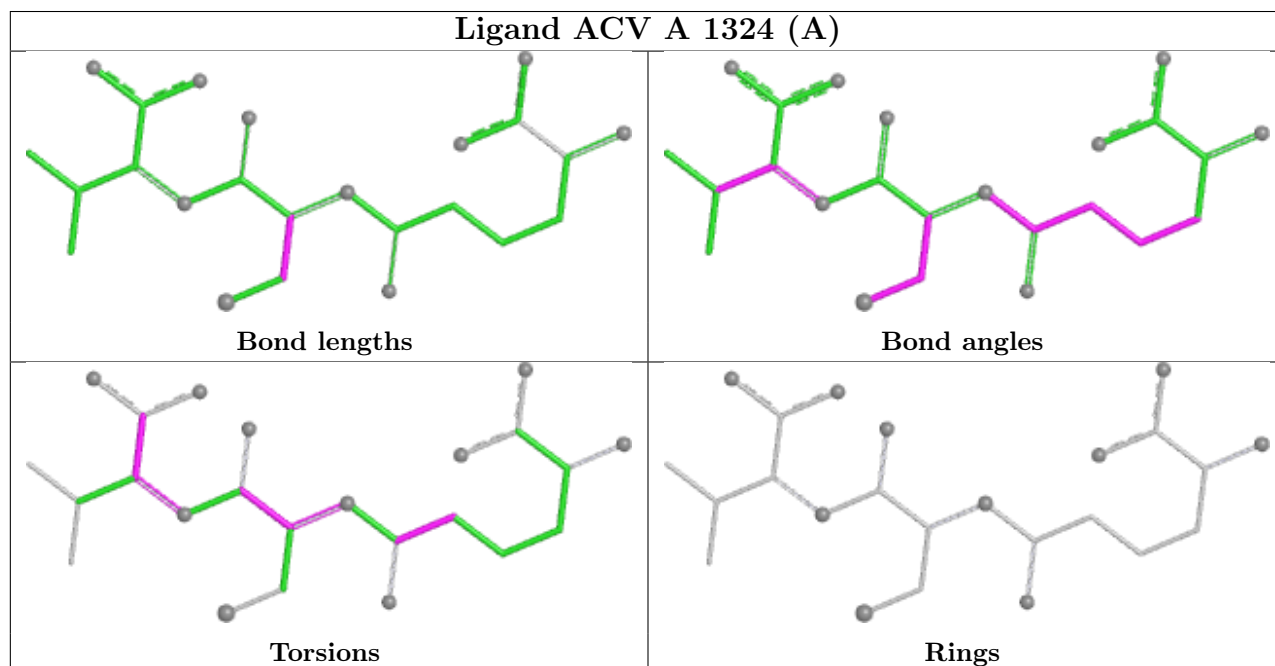
Mol	Chain	Res	Type	Atoms
3	A	1324[A]	ACV	O15-C10-C7-C4
3	A	1324[B]	ACV	O15-C10-C7-C4
3	A	1324[A]	ACV	C32-C30-C31-O43
3	A	1324[A]	ACV	N11-C10-C7-C4
3	A	1324[B]	ACV	N11-C10-C7-C4
3	A	1324[A]	ACV	C13-C12-N11-C10
3	A	1324[B]	ACV	C13-C12-N11-C10
3	A	1324[A]	ACV	C32-C30-N29-C13
3	A	1324[A]	ACV	C32-C30-C31-O42
3	A	1324[A]	ACV	N11-C12-C13-O18
3	A	1324[B]	ACV	N11-C12-C13-O18
3	A	1324[A]	ACV	N11-C12-C13-N29
3	A	1324[B]	ACV	N11-C12-C13-N29
3	A	1324[A]	ACV	C31-C30-N29-C13
3	A	1324[B]	ACV	C31-C30-N29-C13
3	A	1324[A]	ACV	C16-C12-C13-O18
3	A	1324[B]	ACV	C16-C12-C13-O18

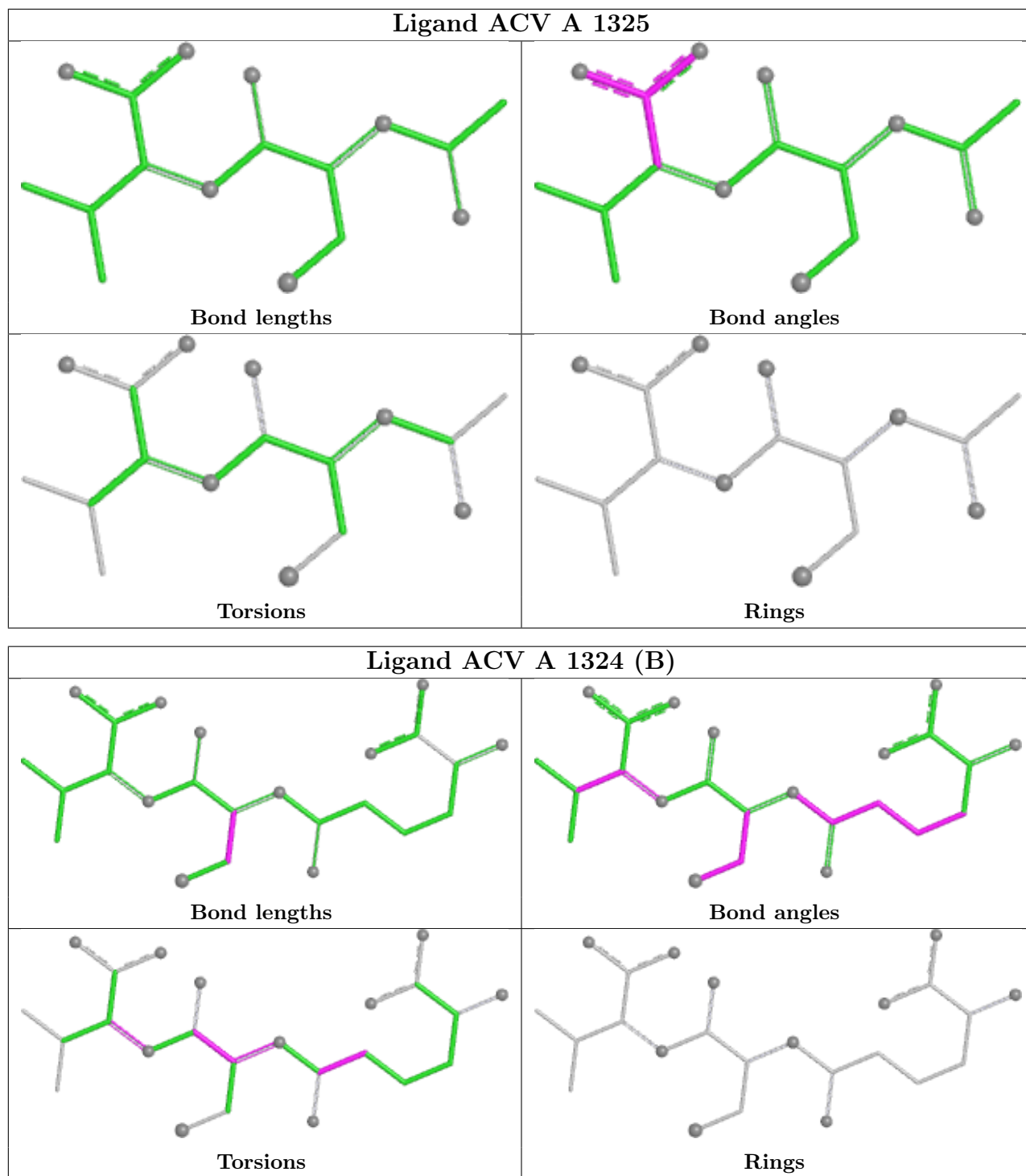
There are no ring outliers.

2 monomers are involved in 2 short contacts:

Mol	Chain	Res	Type	Clashes	Symm-Clashes
3	A	1324[B]	ACV	1	0
4	A	1326	MEE	1	0

The following is a two-dimensional graphical depiction of Mogul quality analysis of bond lengths, bond angles, torsion angles, and ring geometry for all instances of the Ligand of Interest. In addition, ligands with molecular weight > 250 and outliers as shown on the validation Tables will also be included. For torsion angles, if less than 5% of the Mogul distribution of torsion angles is within 10 degrees of the torsion angle in question, then that torsion angle is considered an outlier. Any bond that is central to one or more torsion angles identified as an outlier by Mogul will be highlighted in the graph. For rings, the root-mean-square deviation (RMSD) between the ring in question and similar rings identified by Mogul is calculated over all ring torsion angles. If the average RMSD is greater than 60 degrees and the minimal RMSD between the ring in question and any Mogul-identified rings is also greater than 60 degrees, then that ring is considered an outlier. The outliers are highlighted in purple. The color gray indicates Mogul did not find sufficient equivalents in the CSD to analyse the geometry.





## 5.7 Other polymers [i](#)

There are no such residues in this entry.

## 5.8 Polymer linkage issues

There are no chain breaks in this entry.

## 6 Fit of model and data

### 6.1 Protein, DNA and RNA chains

In the following table, the column labelled ‘#RSRZ> 2’ contains the number (and percentage) of RSRZ outliers, followed by percent RSRZ outliers for the chain as percentile scores relative to all X-ray entries and entries of similar resolution. The OWAB column contains the minimum, median, 95<sup>th</sup> percentile and maximum values of the occupancy-weighted average B-factor per residue. The column labelled ‘Q< 0.9’ lists the number of (and percentage) of residues with an average occupancy less than 0.9.

Mol	Chain	Analysed	<RSRZ>	#RSRZ>2	OWAB(Å <sup>2</sup> )	Q<0.9
1	A	320/325 (98%)	2.12	157 (49%) <b>0</b> <b>0</b>	14, 17, 25, 36	1 (0%)

All (157) RSRZ outliers are listed below:

Mol	Chain	Res	Type	RSRZ
1	A	322	VAL	7.3
1	A	282	LEU	7.1
1	A	4	VAL	6.3
1	A	196	PRO	5.6
1	A	284	PHE	5.3
1	A	321	LEU	5.3
1	A	199	ALA	5.3
1	A	3	SER	5.2
1	A	285	PHE	5.0
1	A	131	ASP	5.0
1	A	237	ALA	4.9
1	A	236	ALA	4.8
1	A	283	PRO	4.7
1	A	286	VAL	4.5
1	A	279	ARG	4.4
1	A	228	VAL	4.3
1	A	108	PRO	4.3
1	A	65	ILE	4.2
1	A	211	PHE	4.1
1	A	281	SER	4.0
1	A	213	TRP	3.9
1	A	264	TYR	3.9
1	A	105	TYR	3.8
1	A	106	LEU	3.8
1	A	224	TYR	3.7
1	A	6	LYS	3.7
1	A	295	ASP	3.6

*Continued on next page...*

*Continued from previous page...*

<b>Mol</b>	<b>Chain</b>	<b>Res</b>	<b>Type</b>	<b>RSRZ</b>
1	A	18	PHE	3.6
1	A	110	PHE	3.6
1	A	61	PHE	3.5
1	A	141	PHE	3.5
1	A	235	THR	3.5
1	A	278	GLU	3.4
1	A	222	VAL	3.4
1	A	103	PHE	3.4
1	A	90	TYR	3.4
1	A	173	ARG	3.4
1	A	319	ASN	3.4
1	A	280	GLN	3.4
1	A	300	ARG	3.3
1	A	195	TYR	3.3
1	A	194	PRO	3.3
1	A	198	ALA	3.3
1	A	260	LEU	3.3
1	A	94	ILE	3.3
1	A	187	ILE	3.3
1	A	181	LEU	3.2
1	A	186	LEU	3.2
1	A	86	VAL	3.1
1	A	184	VAL	3.1
1	A	294	ILE	3.1
1	A	88	ALA	3.1
1	A	244	ALA	3.1
1	A	275	VAL	3.1
1	A	42	PHE	3.1
1	A	175	PHE	3.1
1	A	8	ASN	3.0
1	A	189	TYR	3.0
1	A	7	ALA	3.0
1	A	162	LEU	3.0
1	A	149	VAL	3.0
1	A	303	ASN	2.9
1	A	157	LEU	2.9
1	A	107	ASN	2.9
1	A	160	TYR	2.9
1	A	231	LEU	2.9
1	A	309	GLU	2.8
1	A	41	PHE	2.8
1	A	226	SER	2.8

*Continued on next page...*

*Continued from previous page...*

<b>Mol</b>	<b>Chain</b>	<b>Res</b>	<b>Type</b>	<b>RSRZ</b>
1	A	155	ALA	2.8
1	A	223	LEU	2.8
1	A	161	ALA	2.8
1	A	182	ALA	2.8
1	A	185	VAL	2.7
1	A	95	PRO	2.7
1	A	171	PHE	2.7
1	A	192	LEU	2.7
1	A	172	ALA	2.7
1	A	274	TRP	2.7
1	A	190	PRO	2.7
1	A	63	MET	2.7
1	A	191	TYR	2.7
1	A	35	ALA	2.6
1	A	277	ALA	2.6
1	A	202	THR	2.6
1	A	242	ILE	2.6
1	A	197	GLU	2.6
1	A	58	THR	2.6
1	A	302	PRO	2.6
1	A	156	LEU	2.6
1	A	250	LEU	2.6
1	A	133	THR	2.6
1	A	177	PRO	2.6
1	A	269	ILE	2.6
1	A	91	TYR	2.5
1	A	288	LEU	2.5
1	A	305	LYS	2.5
1	A	142	ALA	2.5
1	A	9	VAL	2.5
1	A	307	ASP	2.5
1	A	66	THR	2.5
1	A	20	ASP	2.5
1	A	73	LEU	2.5
1	A	147	TRP	2.5
1	A	12	ILE	2.4
1	A	104	CYS	2.4
1	A	163	ALA	2.4
1	A	54	LEU	2.4
1	A	152	LEU	2.4
1	A	239	TYR	2.4
1	A	256	TYR	2.4

*Continued on next page...*

*Continued from previous page...*

<b>Mol</b>	<b>Chain</b>	<b>Res</b>	<b>Type</b>	<b>RSRZ</b>
1	A	200	ILE	2.4
1	A	17	LEU	2.4
1	A	290	TYR	2.4
1	A	75	ILE	2.3
1	A	111	THR	2.3
1	A	249	TYR	2.3
1	A	45	VAL	2.3
1	A	100	VAL	2.3
1	A	40	GLY	2.3
1	A	59	LYS	2.3
1	A	99	ALA	2.3
1	A	170	PHE	2.3
1	A	5	SER	2.3
1	A	145	TYR	2.3
1	A	238	GLY	2.3
1	A	71	TRP	2.3
1	A	39	THR	2.3
1	A	109	ASN	2.3
1	A	151	GLY	2.3
1	A	159	GLY	2.2
1	A	169	ASN	2.2
1	A	164	LEU	2.2
1	A	220	ILE	2.2
1	A	251	ILE	2.2
1	A	34	ALA	2.2
1	A	320	GLY	2.2
1	A	64	SER	2.2
1	A	297	PHE	2.1
1	A	96	GLY	2.1
1	A	74	ALA	2.1
1	A	203	ALA	2.1
1	A	67	PRO	2.1
1	A	138	PHE	2.1
1	A	204	ALA	2.1
1	A	89	GLY	2.1
1	A	254	GLY	2.1
1	A	299	PRO	2.1
1	A	76	ARG	2.0
1	A	317	LEU	2.0
1	A	80	LYS	2.0
1	A	150	PHE	2.0
1	A	102	SER	2.0

*Continued on next page...*

*Continued from previous page...*

Mol	Chain	Res	Type	RSRZ
1	A	262	ASN	2.0
1	A	306	SER	2.0
1	A	272	VAL	2.0
1	A	261	THR	2.0

## 6.2 Non-standard residues in protein, DNA, RNA chains [i](#)

There are no non-standard protein/DNA/RNA residues in this entry.

## 6.3 Carbohydrates [i](#)

There are no oligosaccharides in this entry.

## 6.4 Ligands [i](#)

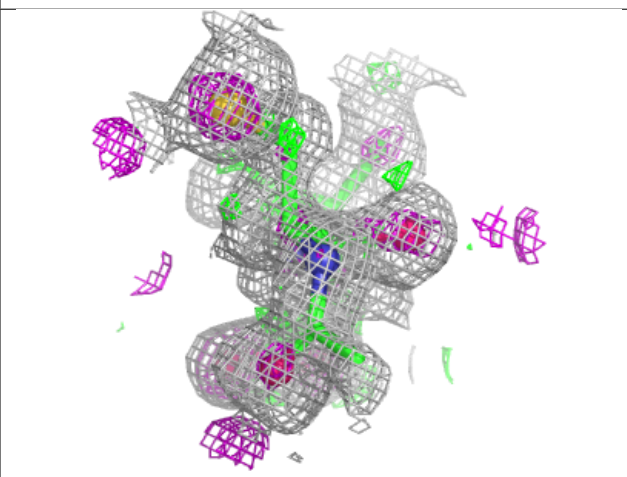
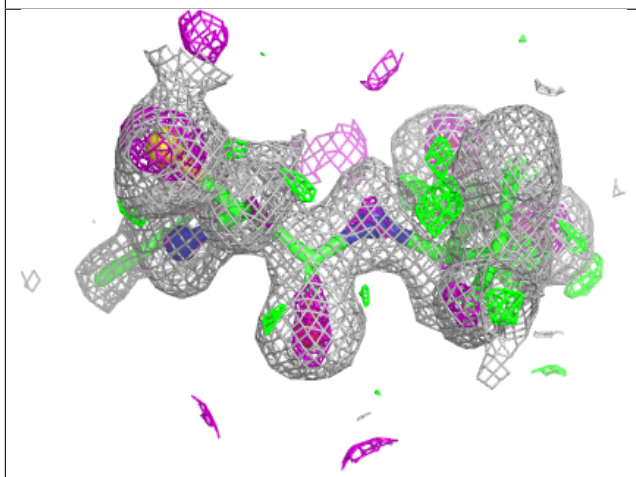
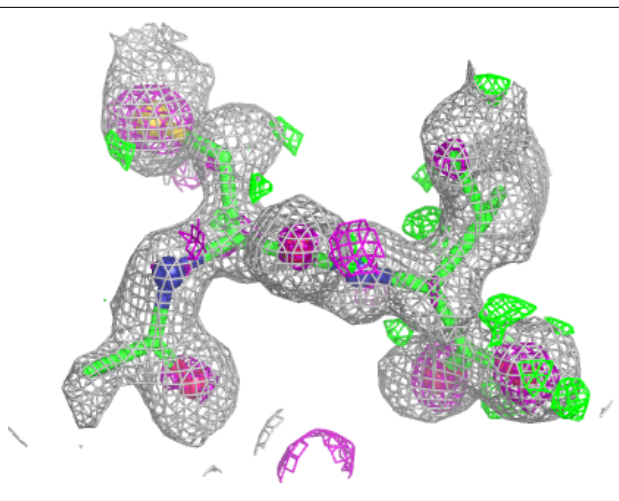
In the following table, the Atoms column lists the number of modelled atoms in the group and the number defined in the chemical component dictionary. The B-factors column lists the minimum, median, 95<sup>th</sup> percentile and maximum values of B factors of atoms in the group. The column labelled 'Q< 0.9' lists the number of atoms with occupancy less than 0.9.

Mol	Type	Chain	Res	Atoms	RSCC	RSR	B-factors(Å <sup>2</sup> )	Q<0.9
5	SO4	A	1327	5/5	0.85	0.19	20,25,26,29	0
3	ACV	A	1325	17/24	0.95	0.11	6,8,17,19	17
3	ACV	A	1324[A]	24/24	0.96	0.10	2,5,12,15	24
3	ACV	A	1324[B]	24/24	0.96	0.10	2,5,8,11	24
4	MEE	A	1326	2/2	0.97	0.13	15,15,15,17	2
2	FE	A	1323	1/1	0.99	0.17	9,9,9,9	0

The following is a graphical depiction of the model fit to experimental electron density of all instances of the Ligand of Interest. In addition, ligands with molecular weight > 250 and outliers as shown on the geometry validation Tables will also be included. Each fit is shown from different orientation to approximate a three-dimensional view.

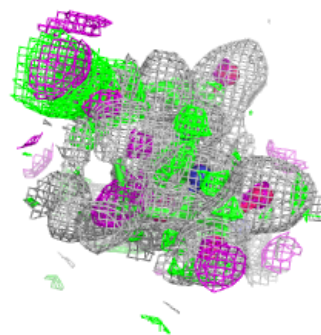
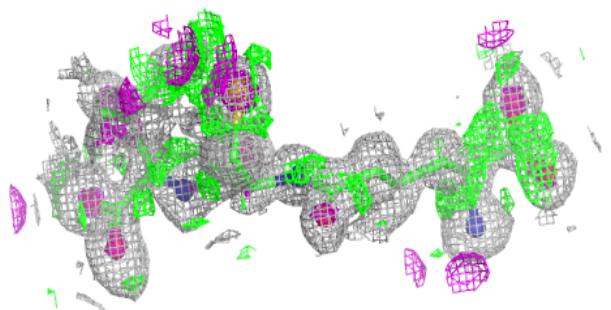
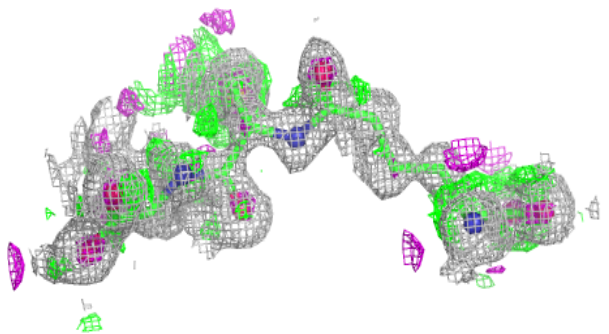
**Electron density around ACV A 1325:**

$2mF_o-DF_c$  (at 0.7 rmsd) in gray  
 $mF_o-DF_c$  (at 3 rmsd) in purple (negative)  
and green (positive)

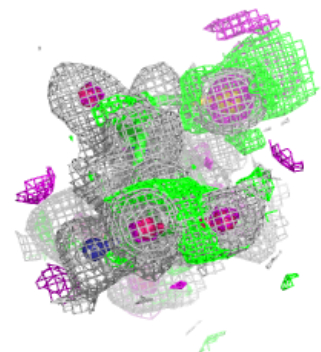
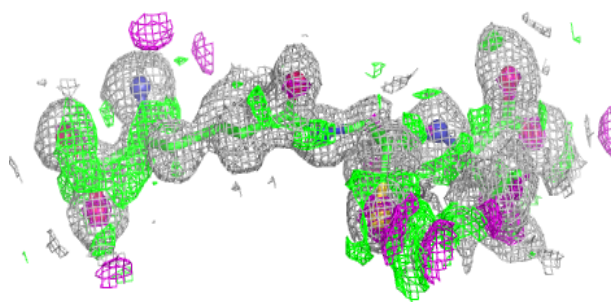
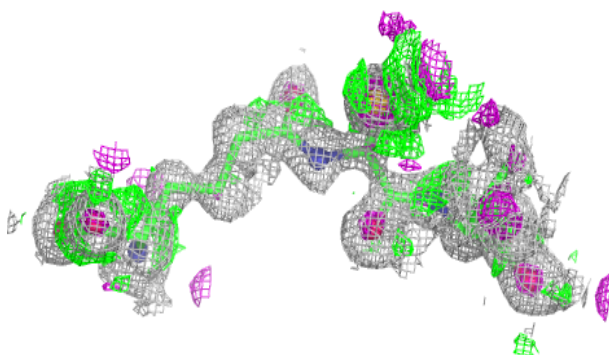


**Electron density around ACV A 1324 (A):**

$2mF_o-DF_c$  (at 0.7 rmsd) in gray  
 $mF_o-DF_c$  (at 3 rmsd) in purple (negative)  
and green (positive)

**Electron density around ACV A 1324 (B):**

$2mF_o-DF_c$  (at 0.7 rmsd) in gray  
 $mF_o-DF_c$  (at 3 rmsd) in purple (negative)  
and green (positive)



## 6.5 Other polymers [i](#)

There are no such residues in this entry.