



wwPDB X-ray Structure Validation Summary Report ⓘ

Mar 1, 2026 – 04:34 AM UTC

PDB ID : 5BP2 / pdb_00005bp2
Title : Dehydratase domain (DH) of a mycocerosic acid synthase-like (MAS-like) PKS, crystal form 1
Authors : Herbst, D.A.; Jakob, P.R.; Zaehring, F.; Maier, T.
Deposited on : 2015-05-27
Resolution : 1.75 Å (reported)

This is a wwPDB X-ray Structure Validation Summary Report for a publicly released PDB entry.

We welcome your comments at validation@mail.wwpdb.org

A user guide is available at

<https://www.wwpdb.org/validation/2017/XrayValidationReportHelp>

with specific help available everywhere you see the ⓘ symbol.

The types of validation reports are described at

<http://www.wwpdb.org/validation/2017/FAQs#types>.

The following versions of software and data (see [references ⓘ](#)) were used in the production of this report:

MolProbity : 4-5-2 with Phenix2.0
Mogul : 2022.3.0, CSD as543be (2022)
Xtriage (Phenix) : 2.0
EDS : 3.0
Percentile statistics : 20250101.v01 (using entries in the PDB archive January 1st 2025)
CCP4 : 9.0.010 (Gargrove)
Density-Fitness : 1.0.12
Ideal geometry (proteins) : Engh & Huber (2001)
Ideal geometry (DNA, RNA) : Parkinson et al. (1996)
Validation Pipeline (wwPDB-VP) : 2.49

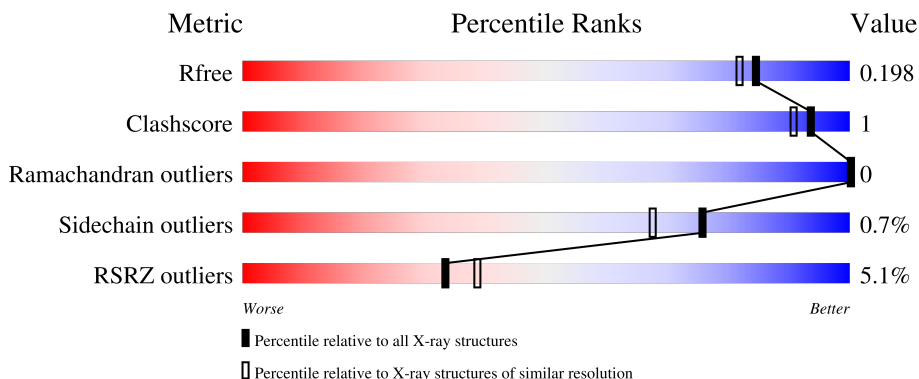
1 Overall quality at a glance

The following experimental techniques were used to determine the structure:

X-RAY DIFFRACTION

The reported resolution of this entry is 1.75 Å.

Percentile scores (ranging between 0-100) for global validation metrics of the entry are shown in the following graphic. The table shows the number of entries on which the scores are based.



Metric	Whole archive (#Entries)	Similar resolution (#Entries, resolution range(Å))
R_{free}	180053	3183 (1.76-1.76)
Clashscore	190562	3299 (1.76-1.76)
Ramachandran outliers	187476	3274 (1.76-1.76)
Sidechain outliers	187428	3274 (1.76-1.76)
RSRZ outliers	180081	3183 (1.76-1.76)

The table below summarises the geometric issues observed across the polymeric chains and their fit to the electron density. The red, orange, yellow and green segments of the lower bar indicate the fraction of residues that contain outliers for ≥ 3 , 2, 1 and 0 types of geometric quality criteria respectively. A grey segment represents the fraction of residues that are not modelled. The numeric value for each fraction is indicated below the corresponding segment, with a dot representing fractions $\leq 5\%$. The upper red bar (where present) indicates the fraction of residues that have poor fit to the electron density. The numeric value is given above the bar.

Mol	Chain	Length	Quality of chain
1	A	305	 4% 89% 5% 7%
1	B	305	 6% 88% 5% 7%
1	C	305	 5% 89% 5% 8%
1	D	305	 4% 89% 5% 7%

2 Entry composition [i](#)

There are 7 unique types of molecules in this entry. The entry contains 18419 atoms, of which 8782 are hydrogens and 0 are deuteriums.

In the tables below, the ZeroOcc column contains the number of atoms modelled with zero occupancy, the AltConf column contains the number of residues with at least one atom in alternate conformation and the Trace column contains the number of residues modelled with at most 2 atoms.

- Molecule 1 is a protein called Mycocerosic acid synthase-like polyketide synthase.

Mol	Chain	Residues	Atoms					ZeroOcc	AltConf	Trace	
			Total	C	H	N	O				S
1	A	285	Total	C	H	N	O	S	0	22	0
			4388	1396	2157	402	424	9			
1	B	284	Total	C	H	N	O	S	0	17	0
			4303	1360	2137	389	407	10			
1	C	282	Total	C	H	N	O	S	0	14	0
			4253	1346	2111	385	403	8			
1	D	283	Total	C	H	N	O	S	0	19	0
			4329	1369	2145	393	414	8			

There are 8 discrepancies between the modelled and reference sequences:

Chain	Residue	Modelled	Actual	Comment	Reference
A	882	SER	-	expression tag	UNP A0R1E8
A	883	MET	-	expression tag	UNP A0R1E8
B	882	SER	-	expression tag	UNP A0R1E8
B	883	MET	-	expression tag	UNP A0R1E8
C	882	SER	-	expression tag	UNP A0R1E8
C	883	MET	-	expression tag	UNP A0R1E8
D	882	SER	-	expression tag	UNP A0R1E8
D	883	MET	-	expression tag	UNP A0R1E8

- Molecule 2 is MAGNESIUM ION (CCD ID: MG) (formula: Mg).

Mol	Chain	Residues	Atoms		ZeroOcc	AltConf
2	A	1	Total	Mg	0	0
			1	1		
2	D	1	Total	Mg	0	0
			1	1		

- Molecule 3 is 1,2-ETHANEDIOL (CCD ID: EDO) (formula: C₂H₆O₂).



Mol	Chain	Residues	Atoms				ZeroOcc	AltConf
			Total	C	H	O		
3	A	1	10	2	6	2	0	0
3	A	1	10	2	6	2	0	0
3	A	1	10	2	6	2	0	0
3	A	1	10	2	6	2	0	1
3	A	1	10	2	6	2	0	0
3	A	1	10	2	6	2	0	1
3	A	1	10	2	6	2	0	0
3	A	1	10	2	6	2	0	0
3	A	1	10	2	6	2	0	0
3	A	1	10	2	6	2	0	0
3	A	1	10	2	6	2	0	0
3	A	1	10	2	6	2	0	0
3	B	1	10	2	6	2	0	0
3	B	1	10	2	6	2	0	0

Continued on next page...

Continued from previous page...

Mol	Chain	Residues	Atoms				ZeroOcc	AltConf
3	C	1	Total	C	H	O	0	0
			10	2	6	2		
3	C	1	Total	C	H	O	0	0
			10	2	6	2		
3	C	1	Total	C	H	O	0	0
			10	2	6	2		
3	C	1	Total	C	H	O	0	0
			10	2	6	2		
3	C	1	Total	C	H	O	0	0
			10	2	6	2		
3	C	1	Total	C	H	O	0	0
			10	2	6	2		
3	D	1	Total	C	H	O	0	0
			10	2	6	2		
3	D	1	Total	C	H	O	0	0
			10	2	6	2		
3	D	1	Total	C	H	O	0	0
			10	2	6	2		
3	D	1	Total	C	H	O	0	0
			10	2	6	2		
3	D	1	Total	C	H	O	0	0
			10	2	6	2		
3	D	1	Total	C	H	O	0	0
			10	2	6	2		
3	D	1	Total	C	H	O	0	0
			10	2	6	2		

- Molecule 4 is GLYCEROL (CCD ID: GOL) (formula: C₃H₈O₃).

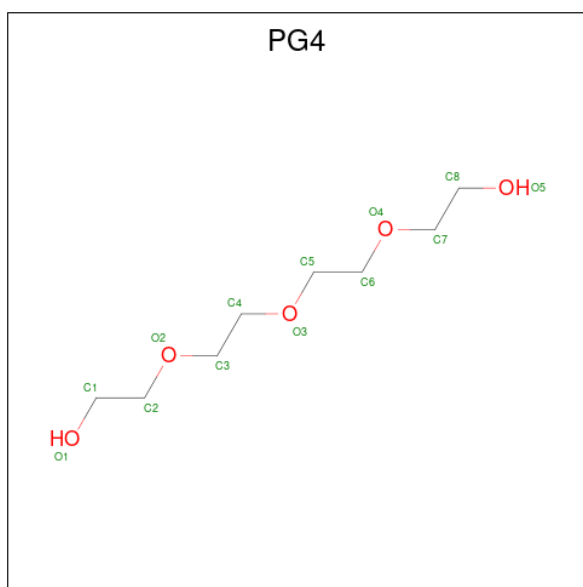


Mol	Chain	Residues	Atoms				ZeroOcc	AltConf
4	A	1	Total	C	H	O	0	0
			14	3	8	3		
4	B	1	Total	C	H	O	0	0
			14	3	8	3		
4	C	1	Total	C	H	O	0	0
			14	3	8	3		
4	D	1	Total	C	H	O	0	0
			14	3	8	3		
4	D	1	Total	C	H	O	0	0
			14	3	8	3		

- Molecule 5 is CHLORIDE ION (CCD ID: CL) (formula: Cl).

Mol	Chain	Residues	Atoms		ZeroOcc	AltConf
5	A	1	Total	Cl	0	0
			1	1		
5	C	1	Total	Cl	0	0
			1	1		
5	D	1	Total	Cl	0	0
			1	1		

- Molecule 6 is TETRAETHYLENE GLYCOL (CCD ID: PG4) (formula: C₈H₁₈O₅).



Mol	Chain	Residues	Atoms		ZeroOcc	AltConf
6	C	1	Total	C O	0	0
			13	8 5		

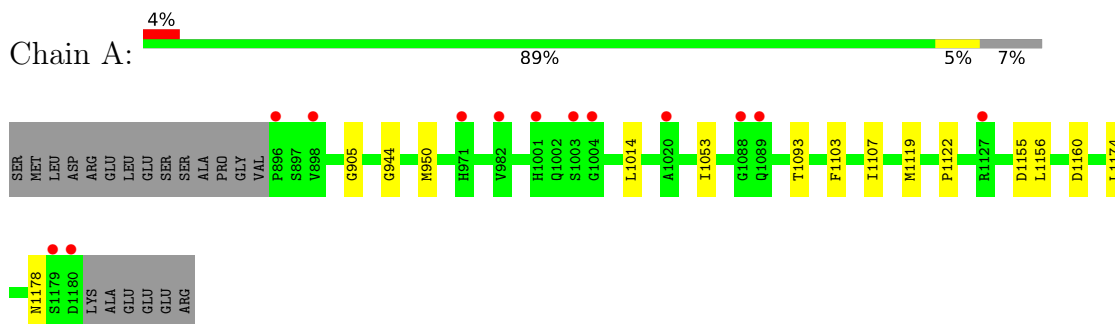
- Molecule 7 is water.

Mol	Chain	Residues	Atoms		ZeroOcc	AltConf
7	A	193	Total	O	0	4
			193	193		
7	B	163	Total	O	0	3
			163	163		
7	C	177	Total	O	0	1
			177	177		
7	D	205	Total	O	0	2
			205	205		

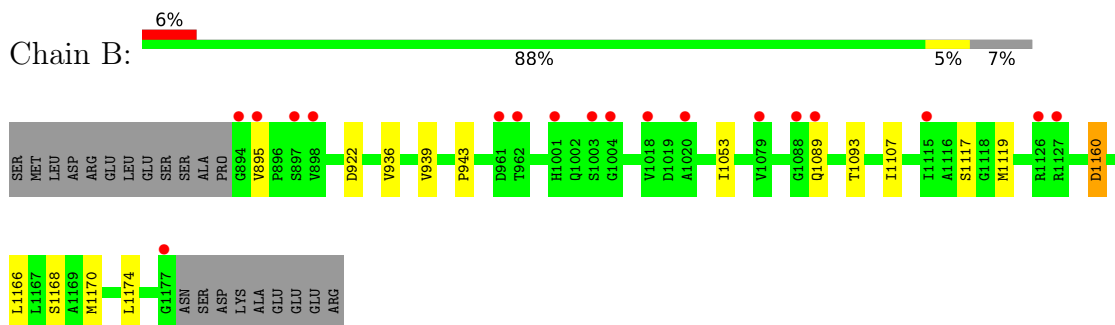
3 Residue-property plots [i](#)

These plots are drawn for all protein, RNA, DNA and oligosaccharide chains in the entry. The first graphic for a chain summarises the proportions of the various outlier classes displayed in the second graphic. The second graphic shows the sequence view annotated by issues in geometry and electron density. Residues are color-coded according to the number of geometric quality criteria for which they contain at least one outlier: green = 0, yellow = 1, orange = 2 and red = 3 or more. A red dot above a residue indicates a poor fit to the electron density ($RSRZ > 2$). Stretches of 2 or more consecutive residues without any outlier are shown as a green connector. Residues present in the sample, but not in the model, are shown in grey.

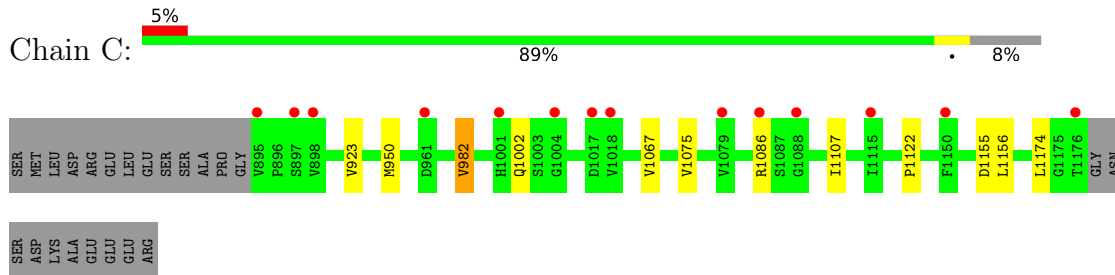
- Molecule 1: Mycocerosic acid synthase-like polyketide synthase



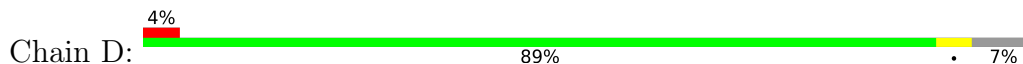
- Molecule 1: Mycocerosic acid synthase-like polyketide synthase

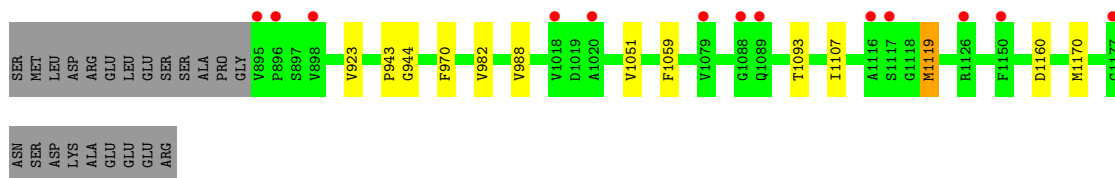


- Molecule 1: Mycocerosic acid synthase-like polyketide synthase



- Molecule 1: Mycocerosic acid synthase-like polyketide synthase





4 Data and refinement statistics

Property	Value	Source
Space group	P 1 21 1	Depositor
Cell constants a, b, c, α , β , γ	59.65Å 162.40Å 66.62Å 90.00° 91.38° 90.00°	Depositor
Resolution (Å)	66.60 – 1.75 66.60 – 1.75	Depositor EDS
% Data completeness (in resolution range)	96.9 (66.60-1.75) 96.9 (66.60-1.75)	Depositor EDS
R_{merge}	0.04	Depositor
R_{sym}	(Not available)	Depositor
$\langle I/\sigma(I) \rangle$ ¹	1.27 (at 1.75Å)	Xtrriage
Refinement program	BUSTER 2.10.2	Depositor
R, R_{free}	0.183 , 0.203 0.171 , 0.198	Depositor DCC
R_{free} test set	2013 reflections (1.64%)	wwPDB-VP
Wilson B-factor (Å ²)	48.0	Xtrriage
Anisotropy	0.255	Xtrriage
Bulk solvent k_{sol} (e/Å ³), B_{sol} (Å ²)	0.37 , 46.5	EDS
L-test for twinning ²	$\langle L \rangle = 0.49$, $\langle L^2 \rangle = 0.33$	Xtrriage
Estimated twinning fraction	0.237 for h,-k,-l	Xtrriage
F_o, F_c correlation	0.98	EDS
Total number of atoms	18419	wwPDB-VP
Average B, all atoms (Å ²)	57.0	wwPDB-VP

Xtrriage's analysis on translational NCS is as follows: *The largest off-origin peak in the Patterson function is 14.98% of the height of the origin peak. No significant pseudotranslation is detected.*

¹Intensities estimated from amplitudes.

²Theoretical values of $\langle |L| \rangle$, $\langle L^2 \rangle$ for acentric reflections are 0.5, 0.333 respectively for untwinned datasets, and 0.375, 0.2 for perfectly twinned datasets.

5 Model quality [i](#)

5.1 Standard geometry [i](#)

Bond lengths and bond angles in the following residue types are not validated in this section: PG4, MG, CL, GOL, EDO

The Z score for a bond length (or angle) is the number of standard deviations the observed value is removed from the expected value. A bond length (or angle) with $|Z| > 5$ is considered an outlier worth inspection. RMSZ is the root-mean-square of all Z scores of the bond lengths (or angles).

Mol	Chain	Bond lengths		Bond angles	
		RMSZ	# Z >5	RMSZ	# Z >5
1	A	0.81	1/2340 (0.0%)	1.00	5/3197 (0.2%)
1	B	0.80	0/2282	1.00	4/3120 (0.1%)
1	C	0.82	1/2249 (0.0%)	1.06	4/3077 (0.1%)
1	D	0.84	1/2289 (0.0%)	1.01	3/3130 (0.1%)
All	All	0.82	3/9160 (0.0%)	1.02	16/12524 (0.1%)

All (3) bond length outliers are listed below:

Mol	Chain	Res	Type	Atoms	Z	Observed(Å)	Ideal(Å)
1	A	950	MET	SD-CE	-7.89	1.59	1.79
1	D	1119	MET	SD-CE	-7.75	1.60	1.79
1	C	950	MET	SD-CE	-6.31	1.63	1.79

The worst 5 of 16 bond angle outliers are listed below:

Mol	Chain	Res	Type	Atoms	Z	Observed(°)	Ideal(°)
1	C	1086[A]	ARG	CA-C-N	9.97	137.63	120.68
1	C	1086[A]	ARG	C-N-CA	9.97	137.63	120.68
1	C	1086[B]	ARG	CA-C-N	9.97	137.63	120.68
1	C	1086[B]	ARG	C-N-CA	9.97	137.63	120.68
1	A	1103	PHE	CA-CB-CG	6.30	120.10	113.80

There are no chirality outliers.

There are no planarity outliers.

5.2 Too-close contacts [i](#)

In the following table, the Non-H and H(model) columns list the number of non-hydrogen atoms and hydrogen atoms in the chain respectively. The H(added) column lists the number of hydrogen

atoms added and optimized by MolProbity. The Clashes column lists the number of clashes within the asymmetric unit, whereas Symm-Clashes lists symmetry-related clashes.

Mol	Chain	Non-H	H(model)	H(added)	Clashes	Symm-Clashes
1	A	2231	2157	2130	6	0
1	B	2166	2137	2064	6	0
1	C	2142	2111	2057	5	0
1	D	2184	2145	2089	7	0
2	A	1	0	0	0	0
2	D	1	0	0	0	0
3	A	48	72	72	0	0
3	B	8	12	12	0	0
3	C	36	54	54	0	0
3	D	36	54	54	1	0
4	A	6	8	8	2	0
4	B	6	8	8	1	0
4	C	6	8	8	1	0
4	D	12	16	16	2	0
5	A	1	0	0	1	0
5	C	1	0	0	0	0
5	D	1	0	0	0	0
6	C	13	0	18	0	0
7	A	193	0	0	0	0
7	B	163	0	0	0	0
7	C	177	0	0	0	0
7	D	205	0	0	0	0
All	All	9637	8782	8590	24	0

The all-atom clashscore is defined as the number of clashes found per 1000 atoms (including hydrogen atoms). The all-atom clashscore for this structure is 1.

The worst 5 of 24 close contacts within the same asymmetric unit are listed below, sorted by their clash magnitude.

Atom-1	Atom-2	Interatomic distance (Å)	Clash overlap (Å)
1:C:1067:VAL:HG12	1:C:1075[B]:VAL:HG12	1.45	0.99
1:B:1168:SER:HB3	1:B:1170[B]:MET:HE2	1.81	0.62
1:D:988:VAL:HG12	3:D:1208:EDO:H22	1.83	0.60
1:D:943:PRO:HA	4:D:1212:GOL:H32	1.83	0.59
1:A:1107[A]:ILE:HD11	1:A:1174:LEU:HD13	1.83	0.59

There are no symmetry-related clashes.

5.3 Torsion angles [i](#)

5.3.1 Protein backbone [i](#)

In the following table, the Percentiles column shows the percent Ramachandran outliers of the chain as a percentile score with respect to all X-ray entries followed by that with respect to entries of similar resolution.

The Analysed column shows the number of residues for which the backbone conformation was analysed, and the total number of residues.

Mol	Chain	Analysed	Favoured	Allowed	Outliers	Percentiles	
1	A	305/305 (100%)	298 (98%)	7 (2%)	0	100	100
1	B	299/305 (98%)	293 (98%)	6 (2%)	0	100	100
1	C	294/305 (96%)	287 (98%)	7 (2%)	0	100	100
1	D	300/305 (98%)	297 (99%)	3 (1%)	0	100	100
All	All	1198/1220 (98%)	1175 (98%)	23 (2%)	0	100	100

There are no Ramachandran outliers to report.

5.3.2 Protein sidechains [i](#)

In the following table, the Percentiles column shows the percent sidechain outliers of the chain as a percentile score with respect to all X-ray entries followed by that with respect to entries of similar resolution.

The Analysed column shows the number of residues for which the sidechain conformation was analysed, and the total number of residues.

Mol	Chain	Analysed	Rotameric	Outliers	Percentiles	
1	A	236/234 (101%)	235 (100%)	1 (0%)	84	80
1	B	230/234 (98%)	228 (99%)	2 (1%)	70	60
1	C	227/234 (97%)	224 (99%)	3 (1%)	61	46
1	D	231/234 (99%)	230 (100%)	1 (0%)	84	80
All	All	924/936 (99%)	917 (99%)	7 (1%)	76	64

5 of 7 residues with a non-rotameric sidechain are listed below:

Mol	Chain	Res	Type
1	C	982[A]	VAL
1	C	982[B]	VAL
1	D	970	PHE

Continued on next page...

Continued from previous page...

Mol	Chain	Res	Type
1	C	1002	GLN
1	B	1117	SER

Sometimes sidechains can be flipped to improve hydrogen bonding and reduce clashes. All (2) such sidechains are listed below:

Mol	Chain	Res	Type
1	A	907	HIS
1	A	1008	GLN

5.3.3 RNA [i](#)

There are no RNA molecules in this entry.

5.4 Non-standard residues in protein, DNA, RNA chains [i](#)

There are no non-standard protein/DNA/RNA residues in this entry.

5.5 Carbohydrates [i](#)

There are no oligosaccharides in this entry.

5.6 Ligand geometry [i](#)

Of 43 ligands modelled in this entry, 5 are monoatomic - leaving 38 for Mogul analysis.

In the following table, the Counts columns list the number of bonds (or angles) for which Mogul statistics could be retrieved, the number of bonds (or angles) that are observed in the model and the number of bonds (or angles) that are defined in the Chemical Component Dictionary. The Link column lists molecule types, if any, to which the group is linked. The Z score for a bond length (or angle) is the number of standard deviations the observed value is removed from the expected value. A bond length (or angle) with $|Z| > 2$ is considered an outlier worth inspection. RMSZ is the root-mean-square of all Z scores of the bond lengths (or angles).

Mol	Type	Chain	Res	Link	Bond lengths			Bond angles		
					Counts	RMSZ	$\# Z > 2$	Counts	RMSZ	$\# Z > 2$
3	EDO	D	1202	-	3,3,3	0.54	0	2,2,2	0.56	0
3	EDO	C	1203	-	3,3,3	0.65	0	2,2,2	0.06	0
4	GOL	B	1203	-	5,5,5	0.50	0	5,5,5	0.53	0
3	EDO	A	1212	-	3,3,3	0.62	0	2,2,2	0.31	0
3	EDO	D	1204	-	3,3,3	0.59	0	2,2,2	0.42	0

Mol	Type	Chain	Res	Link	Bond lengths			Bond angles		
					Counts	RMSZ	# Z > 2	Counts	RMSZ	# Z > 2
3	EDO	C	1206	-	3,3,3	0.69	0	2,2,2	0.30	0
3	EDO	D	1210	-	3,3,3	0.92	0	2,2,2	0.42	0
4	GOL	D	1212	-	5,5,5	0.50	0	5,5,5	0.63	0
4	GOL	C	1210	-	5,5,5	0.13	0	5,5,5	1.05	0
3	EDO	D	1203	-	3,3,3	0.71	0	2,2,2	0.14	0
3	EDO	C	1202	-	3,3,3	0.61	0	2,2,2	0.12	0
3	EDO	A	1205[A]	-	3,3,3	0.39	0	2,2,2	0.28	0
3	EDO	C	1204	-	3,3,3	0.53	0	2,2,2	0.40	0
3	EDO	A	1202	-	3,3,3	0.58	0	2,2,2	0.32	0
3	EDO	C	1207	-	3,3,3	0.49	0	2,2,2	0.33	0
3	EDO	D	1205	-	3,3,3	0.61	0	2,2,2	0.48	0
3	EDO	A	1211	-	3,3,3	0.44	0	2,2,2	0.36	0
3	EDO	D	1209	-	3,3,3	0.46	0	2,2,2	0.67	0
3	EDO	A	1213	-	3,3,3	0.51	0	2,2,2	0.11	0
3	EDO	A	1207[B]	-	3,3,3	0.50	0	2,2,2	0.37	0
3	EDO	A	1206	-	3,3,3	0.48	0	2,2,2	0.44	0
3	EDO	A	1204	-	3,3,3	0.59	0	2,2,2	0.15	0
3	EDO	A	1210	-	3,3,3	0.60	0	2,2,2	0.26	0
3	EDO	B	1201	-	3,3,3	0.60	0	2,2,2	0.37	0
3	EDO	A	1203	-	3,3,3	0.59	0	2,2,2	0.31	0
3	EDO	D	1207	-	3,3,3	0.62	0	2,2,2	0.19	0
6	PG4	C	1212	-	12,12,12	0.59	0	11,11,11	0.64	0
3	EDO	D	1208	-	3,3,3	0.60	0	2,2,2	2.00	1 (50%)
3	EDO	A	1208	-	3,3,3	0.47	0	2,2,2	0.44	0
4	GOL	A	1214	-	5,5,5	0.10	0	5,5,5	1.25	1 (20%)
3	EDO	A	1209	-	3,3,3	0.49	0	2,2,2	0.29	0
3	EDO	D	1206	-	3,3,3	0.51	0	2,2,2	0.27	0
3	EDO	C	1205	-	3,3,3	0.42	0	2,2,2	0.25	0
3	EDO	C	1201	-	3,3,3	0.52	0	2,2,2	0.20	0
4	GOL	D	1211	-	5,5,5	0.04	0	5,5,5	0.10	0
3	EDO	C	1208	-	3,3,3	0.48	0	2,2,2	0.63	0
3	EDO	C	1209	-	3,3,3	0.58	0	2,2,2	0.38	0
3	EDO	B	1202	-	3,3,3	0.67	0	2,2,2	0.38	0

In the following table, the Chirals column lists the number of chiral outliers, the number of chiral centers analysed, the number of these observed in the model and the number defined in the Chemical Component Dictionary. Similar counts are reported in the Torsion and Rings columns. ^{1,2} means no outliers of that kind were identified.

Mol	Type	Chain	Res	Link	Chirals	Torsions	Rings
3	EDO	D	1202	-	-	0/1/1/1	-
3	EDO	C	1203	-	-	1/1/1/1	-

Continued on next page...

Continued from previous page...

Mol	Type	Chain	Res	Link	Chirals	Torsions	Rings
4	GOL	B	1203	-	-	2/4/4/4	-
3	EDO	A	1212	-	-	0/1/1/1	-
3	EDO	D	1204	-	-	0/1/1/1	-
3	EDO	C	1206	-	-	1/1/1/1	-
3	EDO	D	1210	-	-	1/1/1/1	-
4	GOL	D	1212	-	-	3/4/4/4	-
4	GOL	C	1210	-	-	0/4/4/4	-
3	EDO	D	1203	-	-	1/1/1/1	-
3	EDO	C	1202	-	-	1/1/1/1	-
3	EDO	A	1205[A]	-	-	1/1/1/1	-
3	EDO	C	1204	-	-	1/1/1/1	-
3	EDO	A	1202	-	-	1/1/1/1	-
3	EDO	C	1207	-	-	0/1/1/1	-
3	EDO	D	1205	-	-	0/1/1/1	-
3	EDO	A	1211	-	-	1/1/1/1	-
3	EDO	D	1209	-	-	0/1/1/1	-
3	EDO	A	1213	-	-	0/1/1/1	-
3	EDO	A	1207[B]	-	-	0/1/1/1	-
3	EDO	A	1206	-	-	0/1/1/1	-
3	EDO	A	1204	-	-	1/1/1/1	-
3	EDO	A	1210	-	-	1/1/1/1	-
3	EDO	B	1201	-	-	0/1/1/1	-
3	EDO	A	1203	-	-	0/1/1/1	-
3	EDO	D	1207	-	-	0/1/1/1	-
6	PG4	C	1212	-	-	2/10/10/10	-
3	EDO	D	1208	-	-	1/1/1/1	-
3	EDO	A	1208	-	-	0/1/1/1	-
4	GOL	A	1214	-	-	0/4/4/4	-
3	EDO	A	1209	-	-	1/1/1/1	-
3	EDO	D	1206	-	-	1/1/1/1	-
3	EDO	C	1205	-	-	1/1/1/1	-
3	EDO	C	1201	-	-	0/1/1/1	-
4	GOL	D	1211	-	-	0/4/4/4	-
3	EDO	C	1208	-	-	0/1/1/1	-
3	EDO	C	1209	-	-	1/1/1/1	-
3	EDO	B	1202	-	-	1/1/1/1	-

There are no bond length outliers.

All (2) bond angle outliers are listed below:

Mol	Chain	Res	Type	Atoms	Z	Observed(°)	Ideal(°)
3	D	1208	EDO	O2-C2-C1	2.80	133.70	112.39
4	A	1214	GOL	C3-C2-C1	-2.26	103.50	111.80

There are no chirality outliers.

5 of 24 torsion outliers are listed below:

Mol	Chain	Res	Type	Atoms
4	B	1203	GOL	C1-C2-C3-O3
4	D	1212	GOL	C1-C2-C3-O3
3	C	1204	EDO	O1-C1-C2-O2
3	A	1202	EDO	O1-C1-C2-O2
3	A	1205[A]	EDO	O1-C1-C2-O2

There are no ring outliers.

5 monomers are involved in 7 short contacts:

Mol	Chain	Res	Type	Clashes	Symm-Clashes
4	B	1203	GOL	1	0
4	D	1212	GOL	2	0
4	C	1210	GOL	1	0
3	D	1208	EDO	1	0
4	A	1214	GOL	2	0

5.7 Other polymers [i](#)

There are no such residues in this entry.

5.8 Polymer linkage issues [i](#)

There are no chain breaks in this entry.

6 Fit of model and data [i](#)

6.1 Protein, DNA and RNA chains [i](#)

In the following table, the column labelled ‘#RSRZ > 2’ contains the number (and percentage) of RSRZ outliers, followed by percent RSRZ outliers for the chain as percentile scores relative to all X-ray entries and entries of similar resolution. The OWAB column contains the minimum, median, 95th percentile and maximum values of the occupancy-weighted average B-factor per residue. The column labelled ‘Q < 0.9’ lists the number of (and percentage) of residues with an average occupancy less than 0.9.

Mol	Chain	Analysed	<RSRZ>	#RSRZ>2	OWAB(Å ²)	Q<0.9
1	A	285/305 (93%)	0.28	13 (4%) 37 43	22, 52, 86, 129	15 (5%)
1	B	284/305 (93%)	0.44	18 (6%) 26 30	25, 55, 90, 114	9 (3%)
1	C	282/305 (92%)	0.33	14 (4%) 34 39	22, 53, 87, 119	7 (2%)
1	D	283/305 (92%)	0.23	13 (4%) 37 43	21, 49, 79, 110	12 (4%)
All	All	1134/1220 (92%)	0.32	58 (5%) 33 39	21, 52, 87, 129	43 (3%)

The worst 5 of 58 RSRZ outliers are listed below:

Mol	Chain	Res	Type	RSRZ
1	C	898	VAL	6.2
1	D	1177	GLY	6.0
1	B	1177	GLY	5.6
1	D	1117[A]	SER	5.3
1	C	1176	THR	5.2

6.2 Non-standard residues in protein, DNA, RNA chains [i](#)

There are no non-standard protein/DNA/RNA residues in this entry.

6.3 Carbohydrates [i](#)

There are no oligosaccharides in this entry.

6.4 Ligands [i](#)

In the following table, the Atoms column lists the number of modelled atoms in the group and the number defined in the chemical component dictionary. The B-factors column lists the minimum, median, 95th percentile and maximum values of B factors of atoms in the group. The column labelled ‘Q < 0.9’ lists the number of atoms with occupancy less than 0.9.

Mol	Type	Chain	Res	Atoms	RSCC	RSR	B-factors(Å ²)	Q<0.9
3	EDO	C	1208	4/4	0.54	0.18	81,85,89,89	0
3	EDO	C	1204	4/4	0.61	0.15	89,90,91,91	0
3	EDO	A	1208	4/4	0.67	0.21	102,105,107,107	0
3	EDO	C	1203	4/4	0.69	0.15	68,70,78,78	0
4	GOL	B	1203	6/6	0.70	0.19	44,65,75,76	0
6	PG4	C	1212	13/13	0.71	0.21	87,89,90,90	0
2	MG	A	1201	1/1	0.73	0.17	88,88,88,88	0
3	EDO	C	1207	4/4	0.75	0.13	82,82,84,84	0
4	GOL	D	1212	6/6	0.76	0.20	43,64,71,72	0
3	EDO	A	1211	4/4	0.76	0.17	101,102,104,104	0
3	EDO	C	1202	4/4	0.77	0.18	64,70,79,80	0
3	EDO	D	1207	4/4	0.78	0.16	67,75,79,79	0
4	GOL	D	1211	6/6	0.79	0.14	79,85,89,89	0
3	EDO	D	1203	4/4	0.80	0.15	64,71,73,73	0
3	EDO	A	1206	4/4	0.82	0.16	93,95,95,95	0
4	GOL	A	1214	6/6	0.82	0.17	47,70,78,79	0
3	EDO	C	1201	4/4	0.82	0.12	90,91,94,94	0
3	EDO	A	1210	4/4	0.83	0.19	88,89,90,90	0
3	EDO	D	1204	4/4	0.83	0.13	67,70,74,74	0
3	EDO	D	1205	4/4	0.83	0.21	78,79,81,81	0
3	EDO	B	1202	4/4	0.83	0.19	58,61,71,71	0
3	EDO	D	1210	4/4	0.83	0.21	65,68,71,71	0
3	EDO	A	1207[B]	4/4	0.84	0.23	63,66,67,67	10
3	EDO	C	1206	4/4	0.84	0.12	57,70,76,76	0
3	EDO	D	1208	4/4	0.84	0.12	76,79,81,81	0
3	EDO	A	1209	4/4	0.86	0.11	60,69,71,71	0
3	EDO	C	1209	4/4	0.86	0.19	56,62,67,68	0
4	GOL	C	1210	6/6	0.86	0.15	45,68,83,84	0
3	EDO	B	1201	4/4	0.86	0.12	81,83,85,85	0
3	EDO	D	1209	4/4	0.86	0.11	62,66,69,69	0
3	EDO	A	1204	4/4	0.86	0.14	72,75,77,78	0
3	EDO	C	1205	4/4	0.87	0.11	73,75,78,78	0
3	EDO	A	1203	4/4	0.88	0.17	78,79,84,85	0
3	EDO	A	1202	4/4	0.88	0.14	84,86,87,87	0
5	CL	C	1211	1/1	0.89	0.13	99,99,99,99	0
3	EDO	D	1206	4/4	0.90	0.10	58,71,77,77	0
3	EDO	A	1213	4/4	0.91	0.10	54,63,67,67	0
3	EDO	D	1202	4/4	0.92	0.12	58,63,66,67	0
5	CL	D	1213	1/1	0.92	0.11	98,98,98,98	0
3	EDO	A	1205[A]	4/4	0.92	0.16	78,78,80,80	10
3	EDO	A	1212	4/4	0.93	0.14	60,70,75,75	0
5	CL	A	1215	1/1	0.97	0.14	68,68,68,68	0
2	MG	D	1201	1/1	0.97	0.06	63,63,63,63	0

6.5 Other polymers

There are no such residues in this entry.