



wwPDB X-ray Structure Validation Summary Report

Mar 5, 2026 – 05:35 PM UTC

PDB ID : 9BR7 / pdb_00009br7
Title : Crystal structure of human succinyl-CoA:glutarate-CoA transferase (SUGCT)
in complex with Losartan carboxylic acid
Authors : Wu, R.; Lazarus, M.B.
Deposited on : 2024-05-10
Resolution : 2.08 Å (reported)

This is a wwPDB X-ray Structure Validation Summary Report for a publicly released PDB entry.

We welcome your comments at validation@mail.wwpdb.org

A user guide is available at

<https://www.wwpdb.org/validation/2017/XrayValidationReportHelp>

with specific help available everywhere you see the  symbol.

The types of validation reports are described at

<http://www.wwpdb.org/validation/2017/FAQs#types>.

The following versions of software and data (see [references](#) ) were used in the production of this report:

MolProbity : 4-5-2 with Phenix2.0
Mogul : 2022.3.0, CSD as543be (2022)
Xtrriage (Phenix) : 2.0
EDS : 3.0
Buster-report : wwPDB partial adaption of 1.1.7 (2018)
Percentile statistics : 20250101.v01 (using entries in the PDB archive January 1st 2025)
CCP4 : 9.0.010 (Gargrove)
Density-Fitness : 1.0.12
Ideal geometry (proteins) : Engh & Huber (2001)
Ideal geometry (DNA, RNA) : Parkinson et al. (1996)
Validation Pipeline (wwPDB-VP) : 2.49

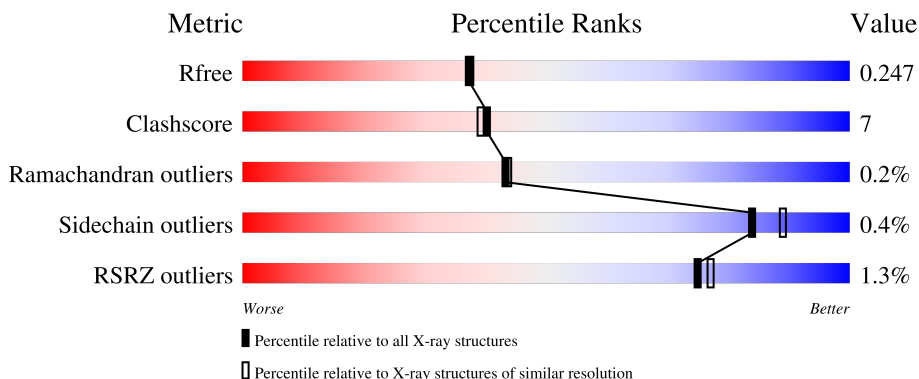
1 Overall quality at a glance

The following experimental techniques were used to determine the structure:

X-RAY DIFFRACTION



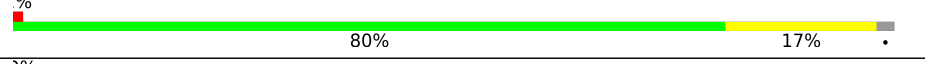

The reported resolution of this entry is 2.08 Å.

Percentile scores (ranging between 0-100) for global validation metrics of the entry are shown in the following graphic. The table shows the number of entries on which the scores are based.



Metric	Whole archive (#Entries)	Similar resolution (#Entries, resolution range(Å))
R_{free}	180053	8172 (2.10-2.06)
Clashscore	190562	8714 (2.10-2.06)
Ramachandran outliers	187476	8641 (2.10-2.06)
Sidechain outliers	187428	8642 (2.10-2.06)
RSRZ outliers	180081	8177 (2.10-2.06)

The table below summarises the geometric issues observed across the polymeric chains and their fit to the electron density. The red, orange, yellow and green segments of the lower bar indicate the fraction of residues that contain outliers for ≥ 3 , 2, 1 and 0 types of geometric quality criteria respectively. A grey segment represents the fraction of residues that are not modelled. The numeric value for each fraction is indicated below the corresponding segment, with a dot representing fractions $\leq 5\%$. The upper red bar (where present) indicates the fraction of residues that have poor fit to the electron density. The numeric value is given above the bar.

Mol	Chain	Length	Quality of chain
1	A	412	 83% 14%
1	B	412	 86% 12%
1	C	412	 80% 17%
1	D	412	 81% 16%

2 Entry composition i

There are 5 unique types of molecules in this entry. The entry contains 12763 atoms, of which 69 are hydrogens and 0 are deuteriums.

In the tables below, the ZeroOcc column contains the number of atoms modelled with zero occupancy, the AltConf column contains the number of residues with at least one atom in alternate conformation and the Trace column contains the number of residues modelled with at most 2 atoms.

- Molecule 1 is a protein called Succinate--hydroxymethylglutarate CoA-transferase.

Mol	Chain	Residues	Atoms					ZeroOcc	AltConf	Trace
			Total	C	N	O	S			
1	A	402	Total 3079	C 1965	N 526	O 574	S 14	0	0	0
1	B	405	Total 3102	C 1978	N 530	O 579	S 15	0	0	0
1	C	403	Total 3086	C 1969	N 528	O 575	S 14	0	0	0
1	D	402	Total 3079	C 1965	N 526	O 574	S 14	0	0	0

There are 24 discrepancies between the modelled and reference sequences:

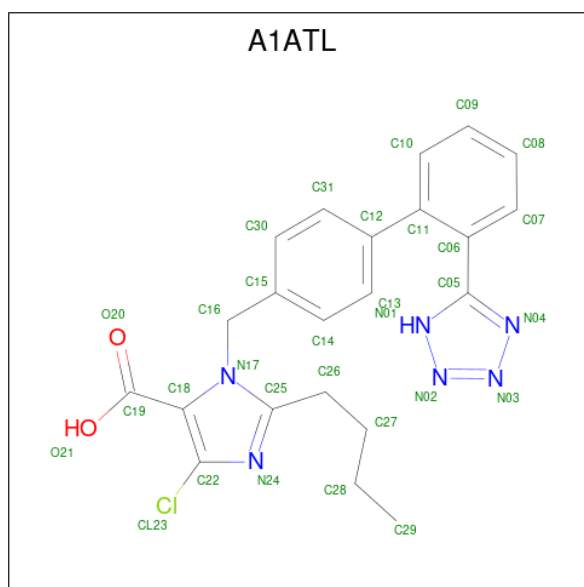
Chain	Residue	Modelled	Actual	Comment	Reference
A	27	GLY	-	expression tag	UNP Q9HAC7
A	28	PRO	-	expression tag	UNP Q9HAC7
A	29	GLY	-	expression tag	UNP Q9HAC7
A	30	SER	-	expression tag	UNP Q9HAC7
A	255	ALA	GLN	conflict	UNP Q9HAC7
A	256	ALA	LYS	conflict	UNP Q9HAC7
B	27	GLY	-	expression tag	UNP Q9HAC7
B	28	PRO	-	expression tag	UNP Q9HAC7
B	29	GLY	-	expression tag	UNP Q9HAC7
B	30	SER	-	expression tag	UNP Q9HAC7
B	255	ALA	GLN	conflict	UNP Q9HAC7
B	256	ALA	LYS	conflict	UNP Q9HAC7
C	27	GLY	-	expression tag	UNP Q9HAC7
C	28	PRO	-	expression tag	UNP Q9HAC7
C	29	GLY	-	expression tag	UNP Q9HAC7
C	30	SER	-	expression tag	UNP Q9HAC7
C	255	ALA	GLN	conflict	UNP Q9HAC7
C	256	ALA	LYS	conflict	UNP Q9HAC7
D	27	GLY	-	expression tag	UNP Q9HAC7
D	28	PRO	-	expression tag	UNP Q9HAC7
D	29	GLY	-	expression tag	UNP Q9HAC7

Continued on next page...

Continued from previous page...

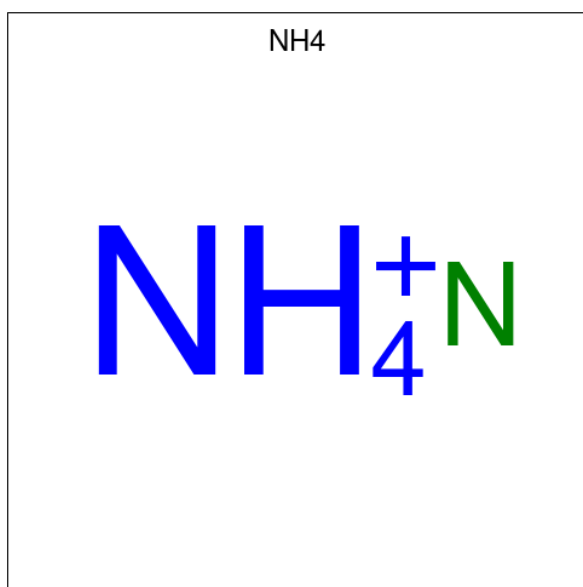
Chain	Residue	Modelled	Actual	Comment	Reference
D	30	SER	-	expression tag	UNP Q9HAC7
D	255	ALA	GLN	conflict	UNP Q9HAC7
D	256	ALA	LYS	conflict	UNP Q9HAC7

- Molecule 2 is losartan carboxylic acid (CCD ID: A1ATL) (formula: $C_{22}H_{21}ClN_6O_2$) (labeled as "Ligand of Interest" by depositor).



Mol	Chain	Residues	Atoms					ZeroOcc	AltConf	
			Total	C	Cl	H	N			O
2	A	1	Total	C	Cl	H	N	O	0	0
			51	22	1	20	6	2		
2	C	1	Total	C	Cl	H	N	O	0	0
			51	22	1	20	6	2		
2	D	1	Total	C	Cl	H	N	O	0	0
			47	21	1	17	6	2		

- Molecule 3 is AMMONIUM ION (CCD ID: NH4) (formula: H_4N).



Mol	Chain	Residues	Atoms			ZeroOcc	AltConf
3	A	1	Total	H	N	0	0
			5	4	1		
3	C	1	Total	H	N	0	0
			5	4	1		
3	D	1	Total	H	N	0	0
			5	4	1		

- Molecule 4 is SULFATE ION (CCD ID: SO4) (formula: O₄S).



Mol	Chain	Residues	Atoms			ZeroOcc	AltConf
4	A	1	Total	O	S	0	0
			5	4	1		

Continued on next page...

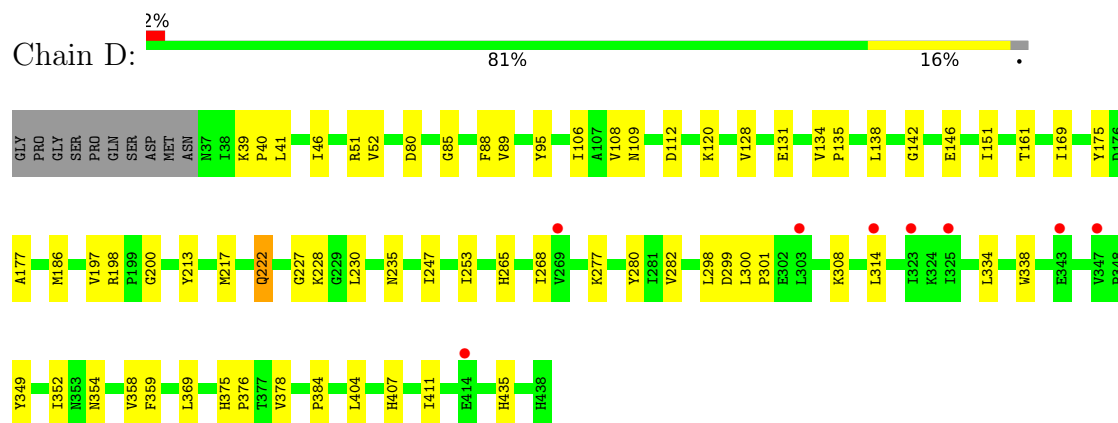
Continued from previous page...

Mol	Chain	Residues	Atoms			ZeroOcc	AltConf
4	A	1	Total	O	S	0	0
			5	4	1		
4	B	1	Total	O	S	0	0
			5	4	1		
4	C	1	Total	O	S	0	0
			5	4	1		
4	C	1	Total	O	S	0	0
			5	4	1		
4	D	1	Total	O	S	0	0
			5	4	1		
4	D	1	Total	O	S	0	0
			5	4	1		

- Molecule 5 is water.

Mol	Chain	Residues	Atoms		ZeroOcc	AltConf
5	A	69	Total	O	0	0
			69	69		
5	B	62	Total	O	0	0
			62	62		
5	C	39	Total	O	0	0
			39	39		
5	D	48	Total	O	0	0
			48	48		

- Molecule 1: Succinate--hydroxymethylglutarate CoA-transferase



4 Data and refinement statistics

Property	Value	Source
Space group	P 21 21 21	Depositor
Cell constants a, b, c, α , β , γ	107.93Å 119.81Å 136.25Å 90.00° 90.00° 90.00°	Depositor
Resolution (Å)	34.06 – 2.08 34.06 – 2.08	Depositor EDS
% Data completeness (in resolution range)	99.7 (34.06-2.08) 99.7 (34.06-2.08)	Depositor EDS
R_{merge}	0.13	Depositor
R_{sym}	(Not available)	Depositor
$\langle I/\sigma(I) \rangle$ ¹	1.44 (at 2.08Å)	Xtrriage
Refinement program	PHENIX 1.20.1_4487	Depositor
R, R_{free}	0.220 , 0.247 0.220 , 0.247	Depositor DCC
R_{free} test set	5365 reflections (5.04%)	wwPDB-VP
Wilson B-factor (Å ²)	36.2	Xtrriage
Anisotropy	0.850	Xtrriage
Bulk solvent k_{sol} (e/Å ³), B_{sol} (Å ²)	0.36 , 44.5	EDS
L-test for twinning ²	$\langle L \rangle = 0.49$, $\langle L^2 \rangle = 0.32$	Xtrriage
Estimated twinning fraction	No twinning to report.	Xtrriage
F_o, F_c correlation	0.96	EDS
Total number of atoms	12763	wwPDB-VP
Average B, all atoms (Å ²)	52.0	wwPDB-VP

Xtrriage's analysis on translational NCS is as follows: *The largest off-origin peak in the Patterson function is 9.33% of the height of the origin peak. No significant pseudotranslation is detected.*

¹Intensities estimated from amplitudes.

²Theoretical values of $\langle |L| \rangle$, $\langle L^2 \rangle$ for acentric reflections are 0.5, 0.333 respectively for untwinned datasets, and 0.375, 0.2 for perfectly twinned datasets.

5 Model quality [i](#)

5.1 Standard geometry [i](#)

Bond lengths and bond angles in the following residue types are not validated in this section: NH4, A1ATL, SO4

The Z score for a bond length (or angle) is the number of standard deviations the observed value is removed from the expected value. A bond length (or angle) with $|Z| > 5$ is considered an outlier worth inspection. RMSZ is the root-mean-square of all Z scores of the bond lengths (or angles).

Mol	Chain	Bond lengths		Bond angles	
		RMSZ	# Z >5	RMSZ	# Z >5
1	A	0.09	0/3147	0.27	0/4269
1	B	0.08	0/3170	0.27	0/4301
1	C	0.10	0/3154	0.27	0/4280
1	D	0.09	0/3147	0.26	0/4269
All	All	0.09	0/12618	0.27	0/17119

There are no bond length outliers.

There are no bond angle outliers.

There are no chirality outliers.

There are no planarity outliers.

5.2 Too-close contacts [i](#)

In the following table, the Non-H and H(model) columns list the number of non-hydrogen atoms and hydrogen atoms in the chain respectively. The H(added) column lists the number of hydrogen atoms added and optimized by MolProbity. The Clashes column lists the number of clashes within the asymmetric unit, whereas Symm-Clashes lists symmetry-related clashes.

Mol	Chain	Non-H	H(model)	H(added)	Clashes	Symm-Clashes
1	A	3079	0	3104	44	0
1	B	3102	0	3123	37	0
1	C	3086	0	3110	58	0
1	D	3079	0	3104	50	0
2	A	31	20	0	0	0
2	C	31	20	0	0	0
2	D	30	17	0	1	0
3	A	1	4	0	0	0
3	C	1	4	0	0	0

Continued on next page...

Continued from previous page...

Mol	Chain	Non-H	H(model)	H(added)	Clashes	Symm-Clashes
3	D	1	4	0	0	0
4	A	10	0	0	0	0
4	B	5	0	0	0	0
4	C	10	0	0	0	0
4	D	10	0	0	0	0
5	A	69	0	0	0	0
5	B	62	0	0	3	0
5	C	39	0	0	2	0
5	D	48	0	0	0	0
All	All	12694	69	12441	165	0

The all-atom clashscore is defined as the number of clashes found per 1000 atoms (including hydrogen atoms). The all-atom clashscore for this structure is 7.

The worst 5 of 165 close contacts within the same asymmetric unit are listed below, sorted by their clash magnitude.

Atom-1	Atom-2	Interatomic distance (Å)	Clash overlap (Å)
1:A:268:ILE:HD11	1:A:286:GLY:HA2	1.21	1.20
1:C:197:VAL:HG21	1:D:197:VAL:HG21	1.56	0.88
1:A:268:ILE:HD11	1:A:286:GLY:CA	2.09	0.81
1:C:311:THR:OG1	1:C:314:LEU:HD23	1.86	0.75
1:C:253:ILE:HG21	1:D:89:VAL:HG21	1.69	0.75

There are no symmetry-related clashes.

5.3 Torsion angles [i](#)

5.3.1 Protein backbone [i](#)

In the following table, the Percentiles column shows the percent Ramachandran outliers of the chain as a percentile score with respect to all X-ray entries followed by that with respect to entries of similar resolution.

The Analysed column shows the number of residues for which the backbone conformation was analysed, and the total number of residues.

Mol	Chain	Analysed	Favoured	Allowed	Outliers	Percentiles
1	A	400/412 (97%)	394 (98%)	5 (1%)	1 (0%)	36 36
1	B	403/412 (98%)	397 (98%)	5 (1%)	1 (0%)	43 44

Continued on next page...

Continued from previous page...

Mol	Chain	Analysed	Favoured	Allowed	Outliers	Percentiles	
1	C	401/412 (97%)	395 (98%)	5 (1%)	1 (0%)	43	44
1	D	400/412 (97%)	392 (98%)	7 (2%)	1 (0%)	36	36
All	All	1604/1648 (97%)	1578 (98%)	22 (1%)	4 (0%)	43	44

All (4) Ramachandran outliers are listed below:

Mol	Chain	Res	Type
1	A	52	VAL
1	B	52	VAL
1	C	52	VAL
1	D	52	VAL

5.3.2 Protein sidechains [i](#)

In the following table, the Percentiles column shows the percent sidechain outliers of the chain as a percentile score with respect to all X-ray entries followed by that with respect to entries of similar resolution.

The Analysed column shows the number of residues for which the sidechain conformation was analysed, and the total number of residues.

Mol	Chain	Analysed	Rotameric	Outliers	Percentiles	
1	A	329/337 (98%)	328 (100%)	1 (0%)	86	91
1	B	332/337 (98%)	331 (100%)	1 (0%)	86	91
1	C	330/337 (98%)	329 (100%)	1 (0%)	86	91
1	D	329/337 (98%)	327 (99%)	2 (1%)	78	85
All	All	1320/1348 (98%)	1315 (100%)	5 (0%)	84	89

All (5) residues with a non-rotameric sidechain are listed below:

Mol	Chain	Res	Type
1	A	213	TYR
1	B	213	TYR
1	C	213	TYR
1	D	213	TYR
1	D	222	GLN

Sometimes sidechains can be flipped to improve hydrogen bonding and reduce clashes. 5 of 16 such sidechains are listed below:

Mol	Chain	Res	Type
1	D	357	ASN
1	D	318	ASN
1	C	318	ASN
1	D	222	GLN
1	C	272	GLN

5.3.3 RNA [i](#)

There are no RNA molecules in this entry.

5.4 Non-standard residues in protein, DNA, RNA chains [i](#)

There are no non-standard protein/DNA/RNA residues in this entry.

5.5 Carbohydrates [i](#)

There are no oligosaccharides in this entry.

5.6 Ligand geometry [i](#)

Of 13 ligands modelled in this entry, 3 are modelled with single atom - leaving 10 for Mogul analysis.

In the following table, the Counts columns list the number of bonds (or angles) for which Mogul statistics could be retrieved, the number of bonds (or angles) that are observed in the model and the number of bonds (or angles) that are defined in the Chemical Component Dictionary. The Link column lists molecule types, if any, to which the group is linked. The Z score for a bond length (or angle) is the number of standard deviations the observed value is removed from the expected value. A bond length (or angle) with $|Z| > 2$ is considered an outlier worth inspection. RMSZ is the root-mean-square of all Z scores of the bond lengths (or angles).

Mol	Type	Chain	Res	Link	Bond lengths			Bond angles		
					Counts	RMSZ	$\# Z > 2$	Counts	RMSZ	$\# Z > 2$
4	SO4	D	503	-	4,4,4	0.24	0	6,6,6	0.08	0
4	SO4	C	503	-	4,4,4	0.23	0	6,6,6	0.10	0
2	A1ATL	D	501	-	32,33,34	1.46	8 (25%)	42,46,47	1.14	3 (7%)
4	SO4	C	504	-	4,4,4	0.23	0	6,6,6	0.07	0
4	SO4	D	504	-	4,4,4	0.23	0	6,6,6	0.07	0
4	SO4	A	504	-	4,4,4	0.24	0	6,6,6	0.09	0
2	A1ATL	A	501	-	33,34,34	1.41	7 (21%)	43,47,47	1.11	1 (2%)
2	A1ATL	C	501	-	33,34,34	1.45	9 (27%)	43,47,47	1.12	3 (6%)

Mol	Type	Chain	Res	Link	Bond lengths			Bond angles		
					Counts	RMSZ	# Z > 2	Counts	RMSZ	# Z > 2
4	SO4	A	503	-	4,4,4	0.23	0	6,6,6	0.10	0
4	SO4	B	501	-	4,4,4	0.23	0	6,6,6	0.12	0

In the following table, the Chirals column lists the number of chiral outliers, the number of chiral centers analysed, the number of these observed in the model and the number defined in the Chemical Component Dictionary. Similar counts are reported in the Torsion and Rings columns. '-' means no outliers of that kind were identified.

Mol	Type	Chain	Res	Link	Chirals	Torsions	Rings
2	A1ATL	A	501	-	-	10/20/20/20	0/4/4/4
2	A1ATL	C	501	-	-	6/20/20/20	0/4/4/4
2	A1ATL	D	501	-	-	5/19/19/20	0/4/4/4

The worst 5 of 24 bond length outliers are listed below:

Mol	Chain	Res	Type	Atoms	Z	Observed(Å)	Ideal(Å)
2	D	501	A1ATL	C05-N01	4.30	1.41	1.34
2	C	501	A1ATL	C05-N01	4.29	1.41	1.34
2	A	501	A1ATL	C05-N01	4.20	1.41	1.34
2	C	501	A1ATL	C22-N24	3.23	1.41	1.35
2	A	501	A1ATL	C22-N24	3.15	1.40	1.35

The worst 5 of 7 bond angle outliers are listed below:

Mol	Chain	Res	Type	Atoms	Z	Observed(°)	Ideal(°)
2	D	501	A1ATL	C15-C16-N17	-2.88	108.27	113.09
2	C	501	A1ATL	C15-C16-N17	-2.59	108.75	113.09
2	A	501	A1ATL	C18-N17-C25	2.34	108.69	106.87
2	D	501	A1ATL	C06-C11-C12	2.27	126.66	123.06
2	D	501	A1ATL	C19-C18-N17	2.25	125.39	122.59

There are no chirality outliers.

5 of 21 torsion outliers are listed below:

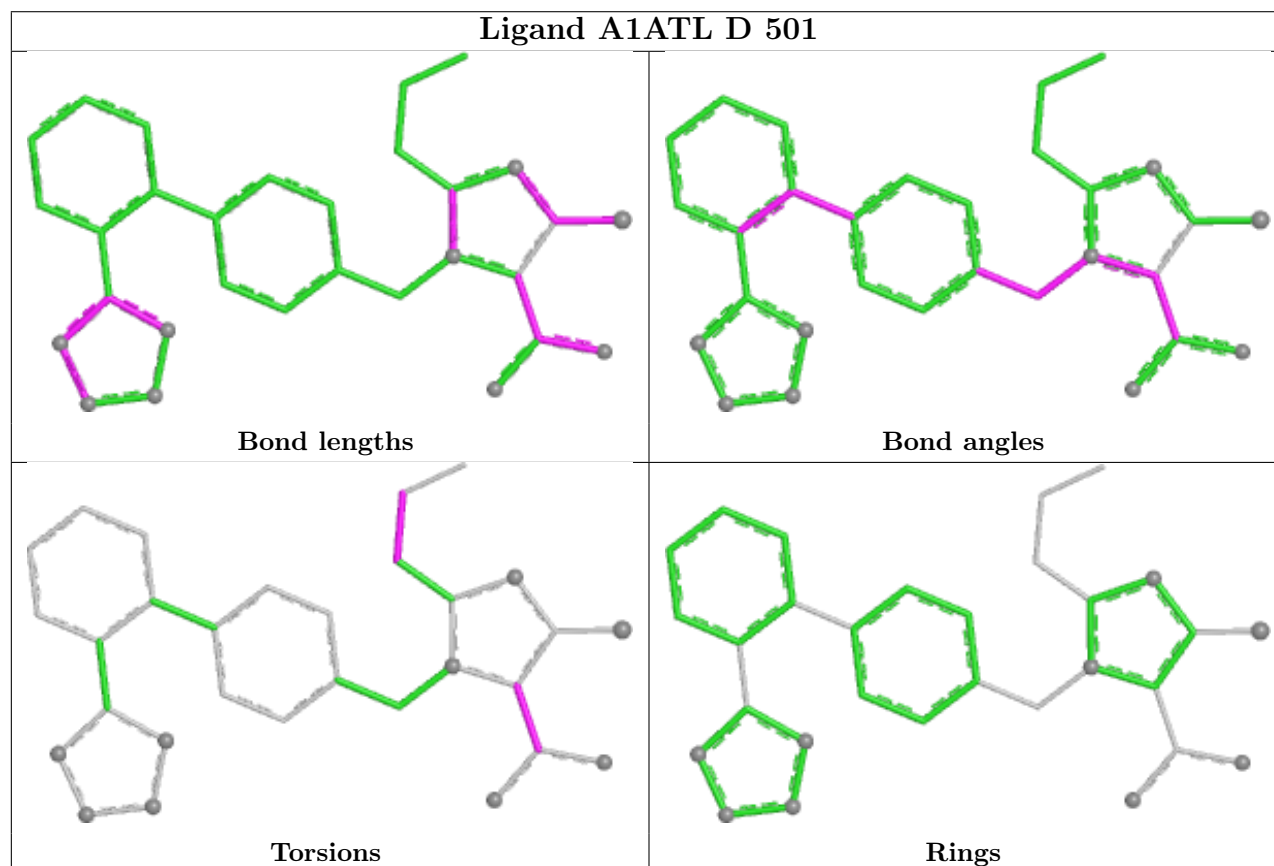
Mol	Chain	Res	Type	Atoms
2	A	501	A1ATL	C25-C26-C27-C28
2	A	501	A1ATL	N04-C05-C06-C11
2	A	501	A1ATL	C22-C18-C19-O20
2	A	501	A1ATL	C22-C18-C19-O21
2	A	501	A1ATL	N17-C18-C19-O21

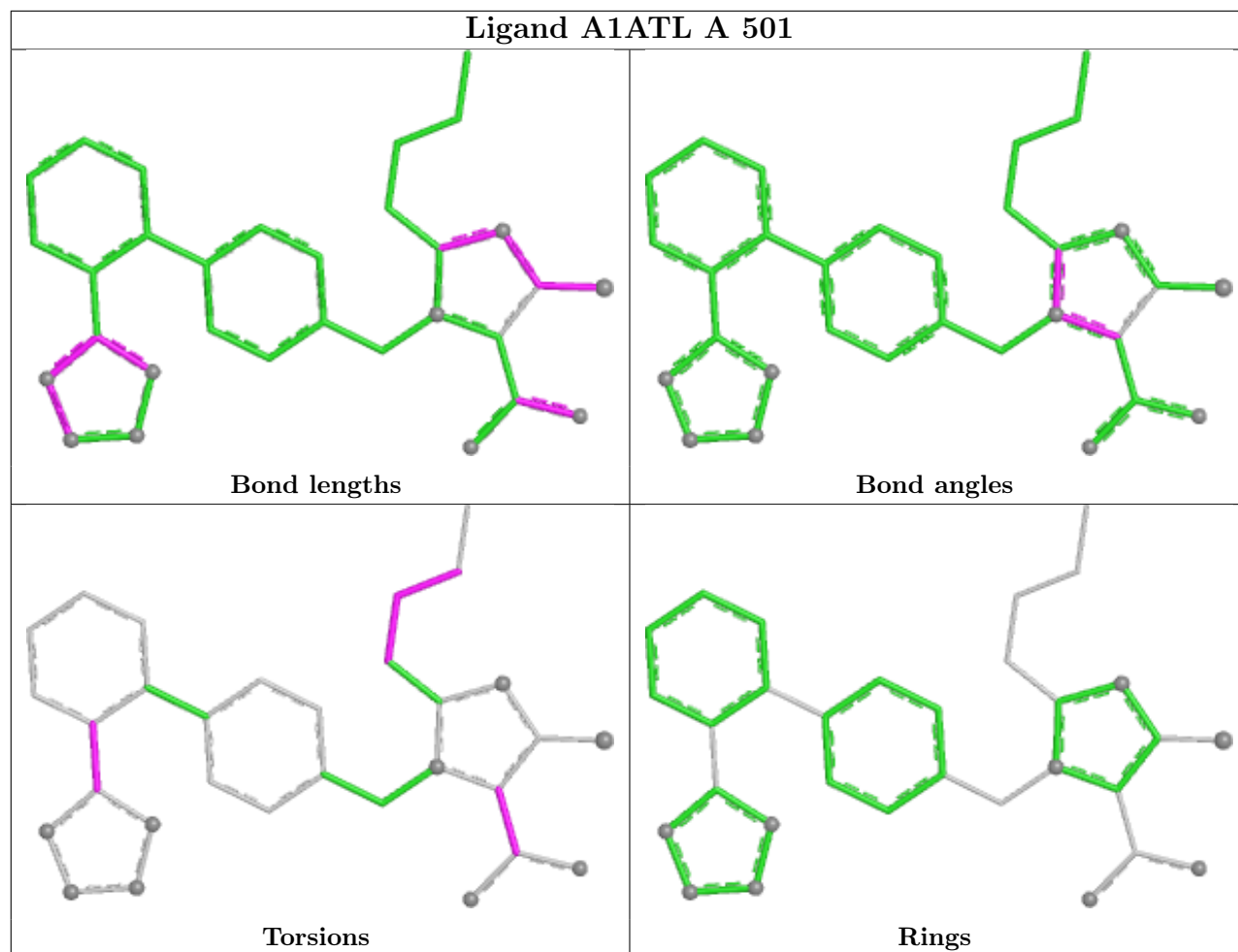
There are no ring outliers.

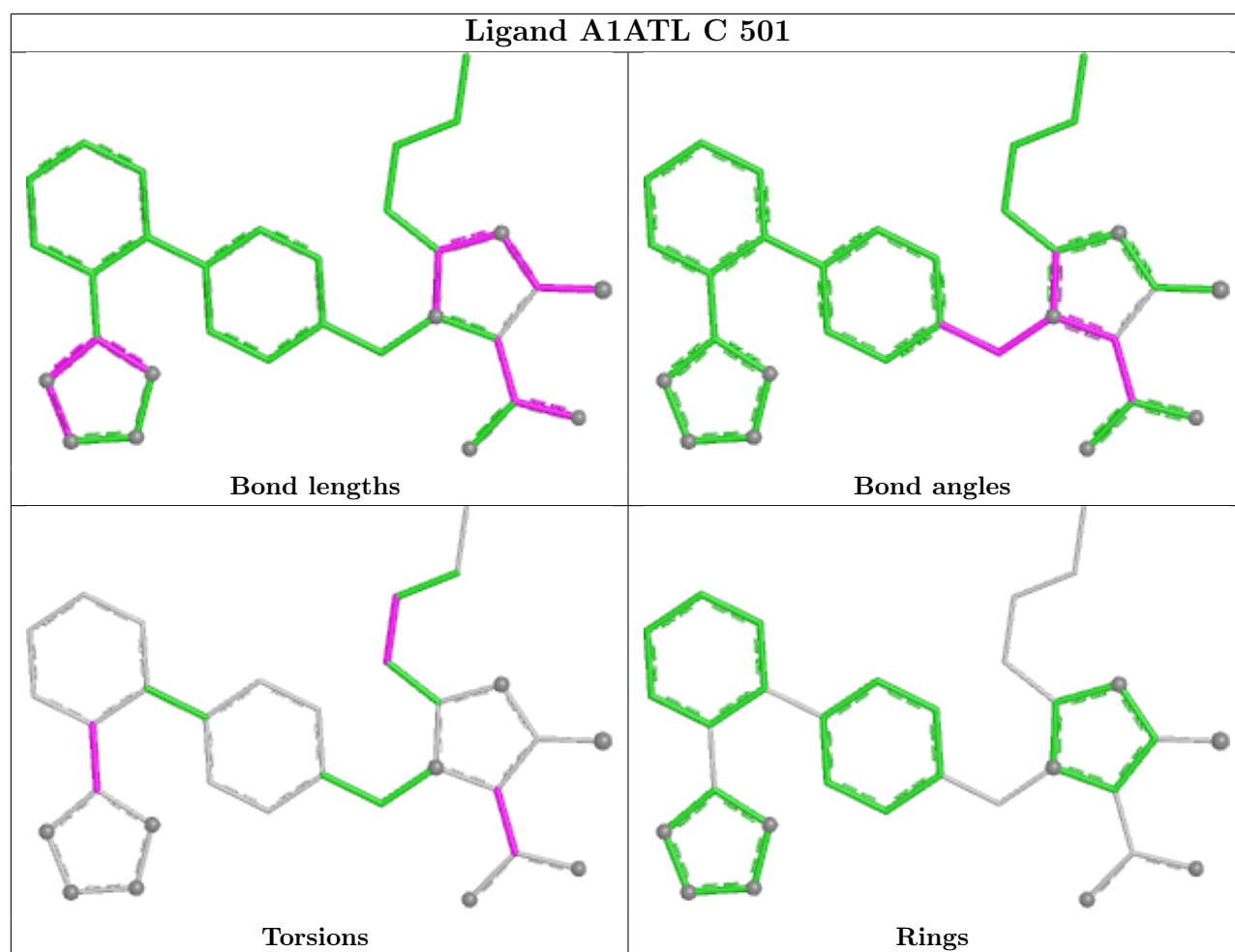
1 monomer is involved in 1 short contact:

Mol	Chain	Res	Type	Clashes	Symm-Clashes
2	D	501	A1ATL	1	0

The following is a two-dimensional graphical depiction of Mogul quality analysis of bond lengths, bond angles, torsion angles, and ring geometry for all instances of the Ligand of Interest. In addition, ligands with molecular weight > 250 and outliers as shown on the validation Tables will also be included. For torsion angles, if less than 5% of the Mogul distribution of torsion angles is within 10 degrees of the torsion angle in question, then that torsion angle is considered an outlier. Any bond that is central to one or more torsion angles identified as an outlier by Mogul will be highlighted in the graph. For rings, the root-mean-square deviation (RMSD) between the ring in question and similar rings identified by Mogul is calculated over all ring torsion angles. If the average RMSD is greater than 60 degrees and the minimal RMSD between the ring in question and any Mogul-identified rings is also greater than 60 degrees, then that ring is considered an outlier. The outliers are highlighted in purple. The color gray indicates Mogul did not find sufficient equivalents in the CSD to analyse the geometry.







5.7 Other polymers [i](#)

There are no such residues in this entry.

5.8 Polymer linkage issues [i](#)

There are no chain breaks in this entry.

6 Fit of model and data [i](#)

6.1 Protein, DNA and RNA chains [i](#)

In the following table, the column labelled ‘#RSRZ> 2’ contains the number (and percentage) of RSRZ outliers, followed by percent RSRZ outliers for the chain as percentile scores relative to all X-ray entries and entries of similar resolution. The OWAB column contains the minimum, median, 95th percentile and maximum values of the occupancy-weighted average B-factor per residue. The column labelled ‘Q< 0.9’ lists the number of (and percentage) of residues with an average occupancy less than 0.9.

Mol	Chain	Analysed	<RSRZ>	#RSRZ>2	OWAB(Å ²)	Q<0.9
1	A	402/412 (97%)	0.20	3 (0%) 84 86	35, 47, 69, 92	0
1	B	405/412 (98%)	0.13	4 (0%) 79 82	32, 44, 61, 112	0
1	C	403/412 (97%)	0.39	6 (1%) 72 74	35, 53, 81, 117	0
1	D	402/412 (97%)	0.43	8 (1%) 65 67	37, 54, 78, 98	0
All	All	1612/1648 (97%)	0.29	21 (1%) 75 77	32, 49, 76, 117	0

The worst 5 of 21 RSRZ outliers are listed below:

Mol	Chain	Res	Type	RSRZ
1	C	95	TYR	3.1
1	D	343	GLU	3.1
1	B	268	ILE	3.0
1	B	35	MET	2.8
1	A	224	TYR	2.6

6.2 Non-standard residues in protein, DNA, RNA chains [i](#)

There are no non-standard protein/DNA/RNA residues in this entry.

6.3 Carbohydrates [i](#)

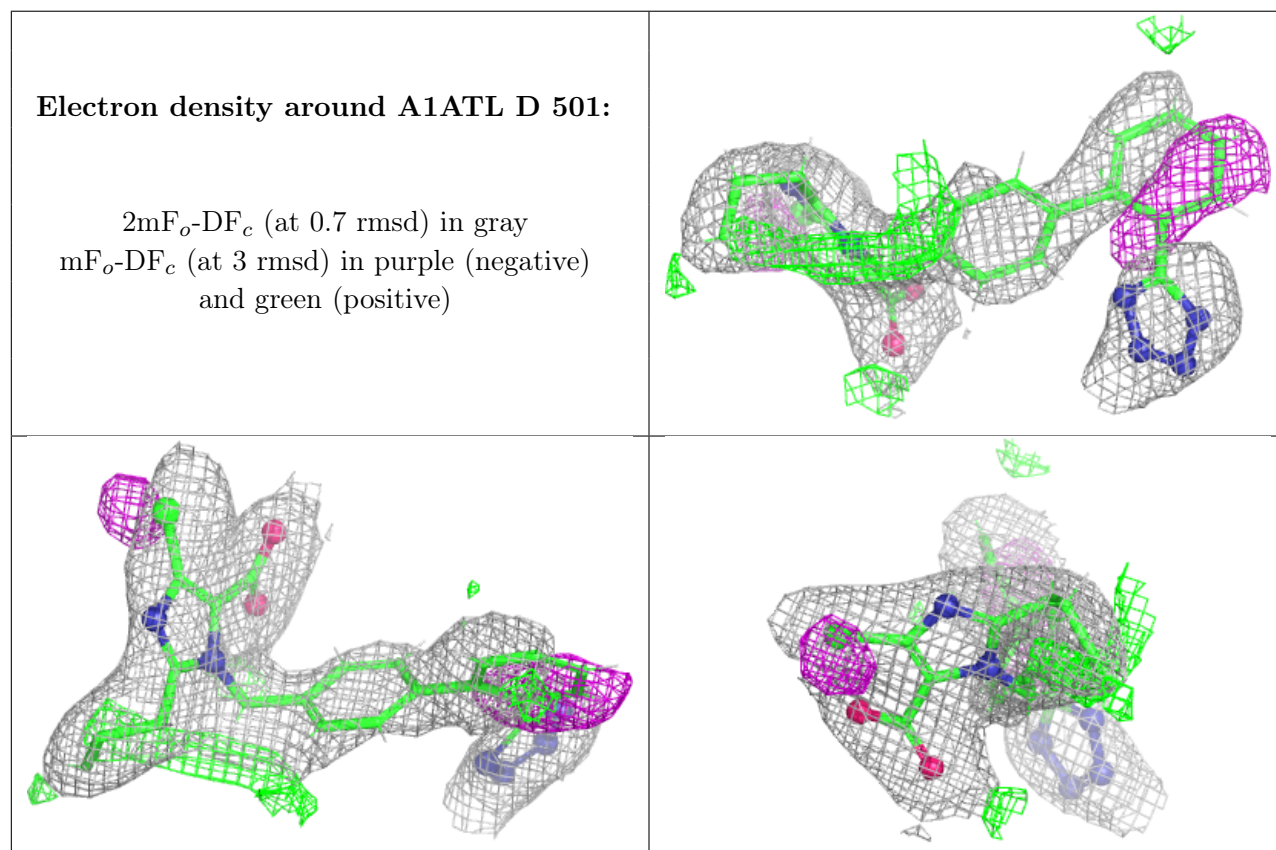
There are no oligosaccharides in this entry.

6.4 Ligands [i](#)

In the following table, the Atoms column lists the number of modelled atoms in the group and the number defined in the chemical component dictionary. The B-factors column lists the minimum, median, 95th percentile and maximum values of B factors of atoms in the group. The column labelled ‘Q< 0.9’ lists the number of atoms with occupancy less than 0.9.

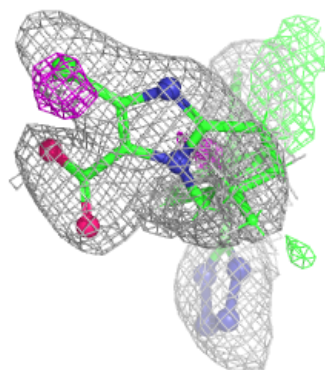
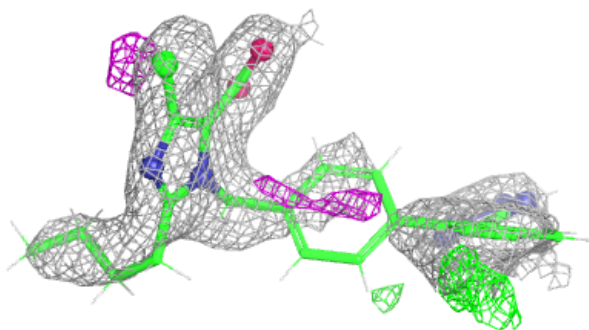
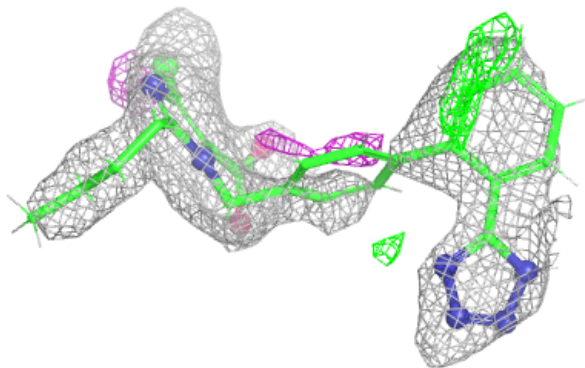
Mol	Type	Chain	Res	Atoms	RSCC	RSR	B-factors(\AA^2)	Q<0.9
2	A1ATL	D	501	30/31	0.73	0.17	46,57,69,70	47
4	SO4	C	504	5/5	0.78	0.11	63,66,70,93	5
4	SO4	C	503	5/5	0.79	0.17	52,56,56,82	5
3	NH4	A	502	1/1	0.79	0.14	38,46,46,46	5
2	A1ATL	C	501	31/31	0.82	0.14	39,54,66,66	51
4	SO4	D	503	5/5	0.85	0.13	55,58,69,79	5
2	A1ATL	A	501	31/31	0.86	0.11	38,46,58,58	51
3	NH4	D	502	1/1	0.88	0.14	46,56,56,56	0
4	SO4	A	503	5/5	0.89	0.14	40,52,57,63	5
4	SO4	D	504	5/5	0.89	0.10	49,60,63,76	5
4	SO4	B	501	5/5	0.90	0.08	44,61,70,72	0
4	SO4	A	504	5/5	0.92	0.13	45,56,67,67	5
3	NH4	C	502	1/1	0.93	0.12	43,52,52,52	0

The following is a graphical depiction of the model fit to experimental electron density of all instances of the Ligand of Interest. In addition, ligands with molecular weight > 250 and outliers as shown on the geometry validation Tables will also be included. Each fit is shown from different orientation to approximate a three-dimensional view.

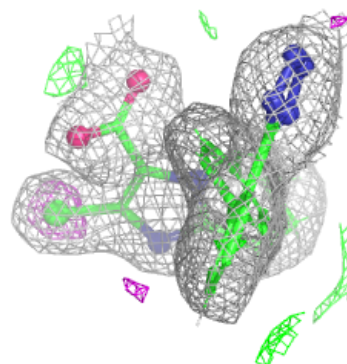
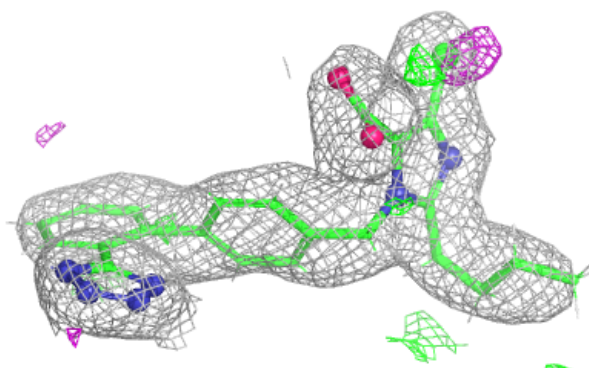
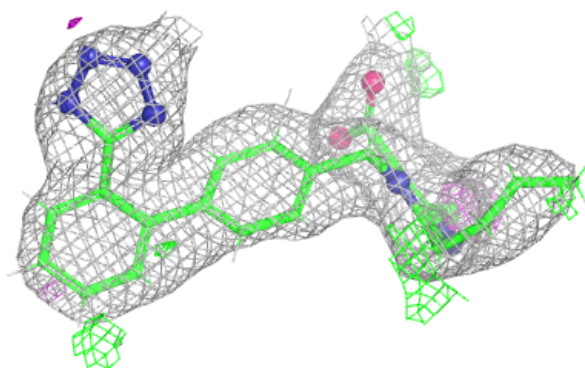


Electron density around A1ATL C 501:

$2mF_o-DF_c$ (at 0.7 rmsd) in gray
 mF_o-DF_c (at 3 rmsd) in purple (negative)
and green (positive)

**Electron density around A1ATL A 501:**

$2mF_o-DF_c$ (at 0.7 rmsd) in gray
 mF_o-DF_c (at 3 rmsd) in purple (negative)
and green (positive)



6.5 Other polymers

There are no such residues in this entry.