



wwPDB X-ray Structure Validation Summary Report ⓘ

Mar 15, 2026 – 09:57 AM UTC

PDB ID : 4BWL / pdb_00004bwl
Title : Structure of the Y137A mutant of E. coli N-acetylneuraminic acid lyase in complex with pyruvate, N-acetyl-D-mannosamine and N-acetylneuraminic acid
Authors : Campeotto, I.; Phillips, S.E.V.; Pearson, A.R.; Nelson, A.; Berry, A.
Deposited on : 2013-07-03
Resolution : 2.00 Å(reported)

This is a wwPDB X-ray Structure Validation Summary Report for a publicly released PDB entry.

We welcome your comments at validation@mail.wwpdb.org

A user guide is available at

<https://www.wwpdb.org/validation/2017/XrayValidationReportHelp>

with specific help available everywhere you see the ⓘ symbol.

The types of validation reports are described at

<http://www.wwpdb.org/validation/2017/FAQs#types>.

The following versions of software and data (see [references ⓘ](#)) were used in the production of this report:

MolProbity : 4-5-2 with Phenix2.0
Mogul : 2022.3.0, CSD as543be (2022)
Xtrriage (Phenix) : 2.0
EDS : 3.0
Buster-report : wwPDB partial adaption of 1.1.7 (2018)
Percentile statistics : 20250101.v01 (using entries in the PDB archive January 1st 2025)
CCP4 : 9.0.010 (Gargrove)
Density-Fitness : 1.0.12
Ideal geometry (proteins) : Engh & Huber (2001)
Ideal geometry (DNA, RNA) : Parkinson et al. (1996)
Validation Pipeline (wwPDB-VP) : 2.49

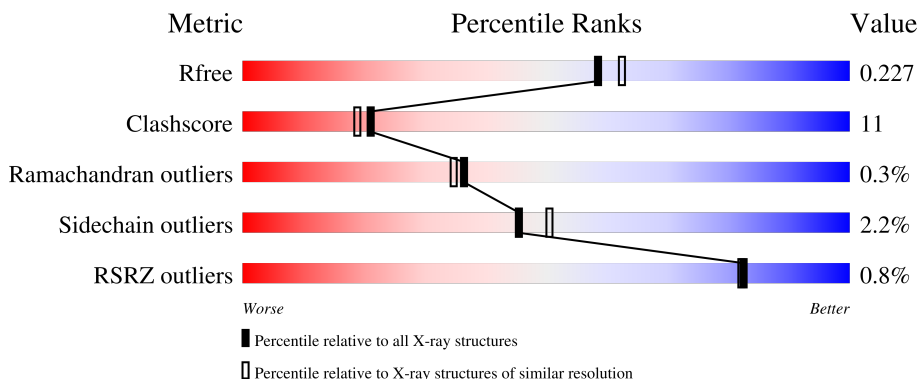
1 Overall quality at a glance

The following experimental techniques were used to determine the structure:

X-RAY DIFFRACTION


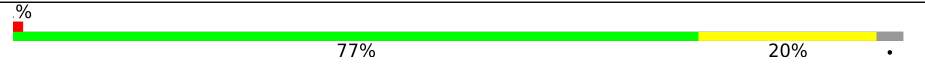
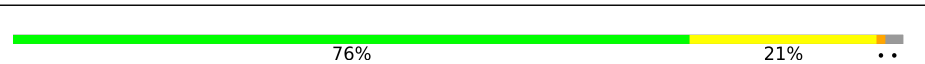

The reported resolution of this entry is 2.00 Å.

Percentile scores (ranging between 0-100) for global validation metrics of the entry are shown in the following graphic. The table shows the number of entries on which the scores are based.



Metric	Whole archive (#Entries)	Similar resolution (#Entries, resolution range(Å))
R_{free}	180053	10052 (2.00-2.00)
Clashscore	190562	11152 (2.00-2.00)
Ramachandran outliers	187476	11031 (2.00-2.00)
Sidechain outliers	187428	11029 (2.00-2.00)
RSRZ outliers	180081	10067 (2.00-2.00)

The table below summarises the geometric issues observed across the polymeric chains and their fit to the electron density. The red, orange, yellow and green segments of the lower bar indicate the fraction of residues that contain outliers for ≥ 3 , 2, 1 and 0 types of geometric quality criteria respectively. A grey segment represents the fraction of residues that are not modelled. The numeric value for each fraction is indicated below the corresponding segment, with a dot representing fractions $\leq 5\%$. The upper red bar (where present) indicates the fraction of residues that have poor fit to the electron density. The numeric value is given above the bar.

Mol	Chain	Length	Quality of chain
1	A	304	
1	B	304	
1	D	304	
2	C	304	

The following table lists non-polymeric compounds, carbohydrate monomers and non-standard residues in protein, DNA, RNA chains that are outliers for geometric or electron-density-fit criteria:

Mol	Type	Chain	Res	Chirality	Geometry	Clashes	Electron density
2	KPI	C	165	-	-	X	-
3	SI3	A	1165	X	-	-	-
3	SI3	B	1165	X	-	-	-
3	SI3	D	1165	X	-	-	-
5	MN9	C	1297	-	-	X	-

2 Entry composition i

There are 6 unique types of molecules in this entry. The entry contains 9360 atoms, of which 0 are hydrogens and 0 are deuteriums.

In the tables below, the ZeroOcc column contains the number of atoms modelled with zero occupancy, the AltConf column contains the number of residues with at least one atom in alternate conformation and the Trace column contains the number of residues modelled with at most 2 atoms.

- Molecule 1 is a protein called N-ACETYLNEURAMINATE LYASE.

Mol	Chain	Residues	Atoms					ZeroOcc	AltConf	Trace
			Total	C	N	O	S			
1	A	299	2306	1466	396	434	10	0	0	0
1	B	295	2272	1446	386	430	10	0	0	0
1	D	298	2301	1464	394	433	10	0	0	0

There are 27 discrepancies between the modelled and reference sequences:

Chain	Residue	Modelled	Actual	Comment	Reference
A	-6	MET	-	expression tag	UNP P0A6L4
A	-5	GLU	-	expression tag	UNP P0A6L4
A	-4	HIS	-	expression tag	UNP P0A6L4
A	-3	HIS	-	expression tag	UNP P0A6L4
A	-2	HIS	-	expression tag	UNP P0A6L4
A	-1	HIS	-	expression tag	UNP P0A6L4
A	0	HIS	-	expression tag	UNP P0A6L4
A	1	HIS	-	expression tag	UNP P0A6L4
A	137	ALA	TYR	engineered mutation	UNP P0A6L4
B	-6	MET	-	expression tag	UNP P0A6L4
B	-5	GLU	-	expression tag	UNP P0A6L4
B	-4	HIS	-	expression tag	UNP P0A6L4
B	-3	HIS	-	expression tag	UNP P0A6L4
B	-2	HIS	-	expression tag	UNP P0A6L4
B	-1	HIS	-	expression tag	UNP P0A6L4
B	0	HIS	-	expression tag	UNP P0A6L4
B	1	HIS	-	expression tag	UNP P0A6L4
B	137	ALA	TYR	engineered mutation	UNP P0A6L4
D	-6	MET	-	expression tag	UNP P0A6L4
D	-5	GLU	-	expression tag	UNP P0A6L4
D	-4	HIS	-	expression tag	UNP P0A6L4
D	-3	HIS	-	expression tag	UNP P0A6L4
D	-2	HIS	-	expression tag	UNP P0A6L4

Continued on next page...

Continued from previous page...

Chain	Residue	Modelled	Actual	Comment	Reference
D	-1	HIS	-	expression tag	UNP P0A6L4
D	0	HIS	-	expression tag	UNP P0A6L4
D	1	HIS	-	expression tag	UNP P0A6L4
D	137	ALA	TYR	engineered mutation	UNP P0A6L4

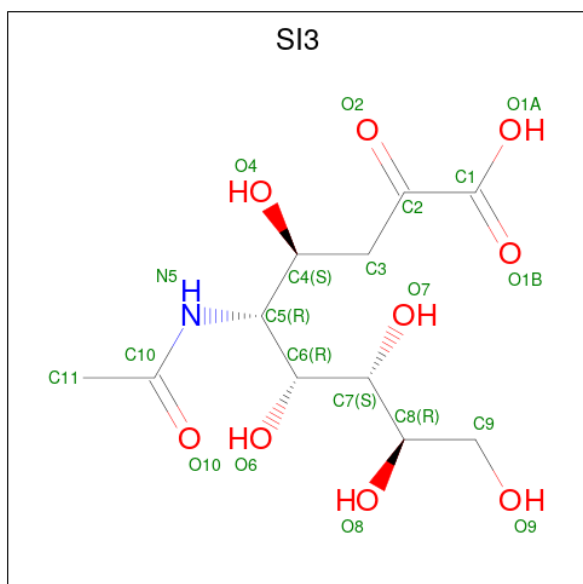
- Molecule 2 is a protein called N-ACETYLNEURAMINATE LYASE.

Mol	Chain	Residues	Atoms					ZeroOcc	AltConf	Trace
			Total	C	N	O	S			
2	C	296	2287	1455	389	433	10	0	0	0

There are 9 discrepancies between the modelled and reference sequences:

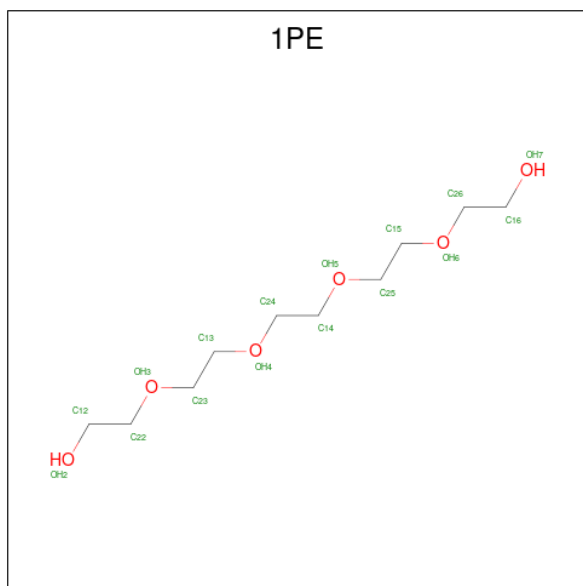
Chain	Residue	Modelled	Actual	Comment	Reference
C	-6	MET	-	expression tag	UNP P0A6L4
C	-5	GLU	-	expression tag	UNP P0A6L4
C	-4	HIS	-	expression tag	UNP P0A6L4
C	-3	HIS	-	expression tag	UNP P0A6L4
C	-2	HIS	-	expression tag	UNP P0A6L4
C	-1	HIS	-	expression tag	UNP P0A6L4
C	0	HIS	-	expression tag	UNP P0A6L4
C	1	HIS	-	expression tag	UNP P0A6L4
C	137	ALA	TYR	engineered mutation	UNP P0A6L4

- Molecule 3 is 5-(acetylamino)-3,5-dideoxy-D-glycero-D-galacto-non-2-ulosonic acid (CCD ID: SI3) (formula: C₁₁H₁₉NO₉).



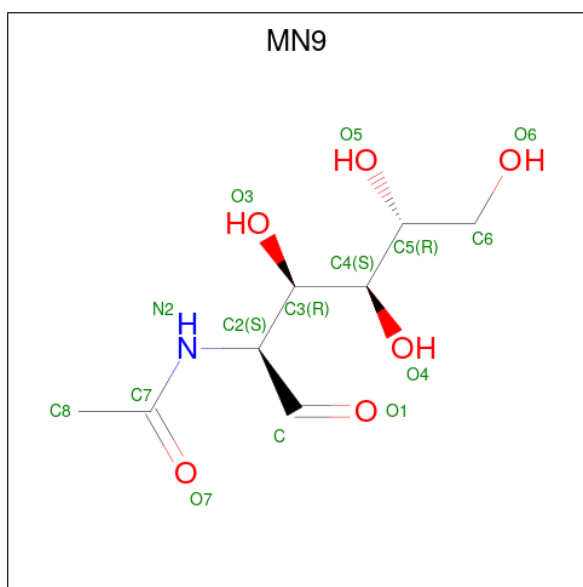
Mol	Chain	Residues	Atoms			ZeroOcc	AltConf	
3	A	1	Total	C	N	O	0	0
			20	11	1	8		
3	B	1	Total	C	N	O	0	0
			20	11	1	8		
3	D	1	Total	C	N	O	0	0
			20	11	1	8		

- Molecule 4 is PENTAETHYLENE GLYCOL (CCD ID: 1PE) (formula: $C_{10}H_{22}O_6$).



Mol	Chain	Residues	Atoms		ZeroOcc	AltConf	
4	B	1	Total	C	O	0	0
			9	6	3		
4	C	1	Total	C	O	0	0
			8	5	3		

- Molecule 5 is 2-(ACETYLAMINO)-2-DEOXY-D-MANNOSE (CCD ID: MN9) (formula: $C_8H_{15}NO_6$).



Mol	Chain	Residues	Atoms				ZeroOcc	AltConf
5	C	1	Total	C	N	O	0	0
			15	8	1	6		

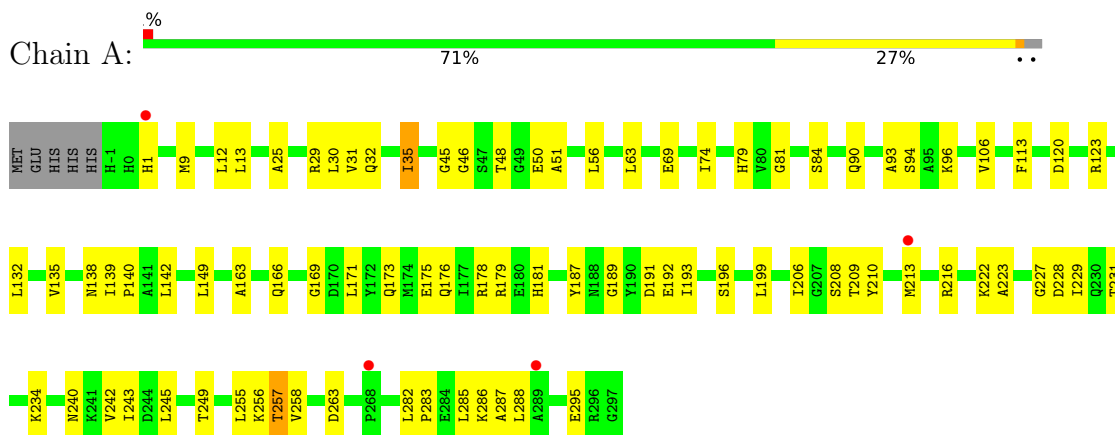
- Molecule 6 is water.

Mol	Chain	Residues	Atoms		ZeroOcc	AltConf
6	A	34	Total	O	0	0
			34	34		
6	B	22	Total	O	0	0
			22	22		
6	C	22	Total	O	0	0
			22	22		
6	D	24	Total	O	0	0
			24	24		

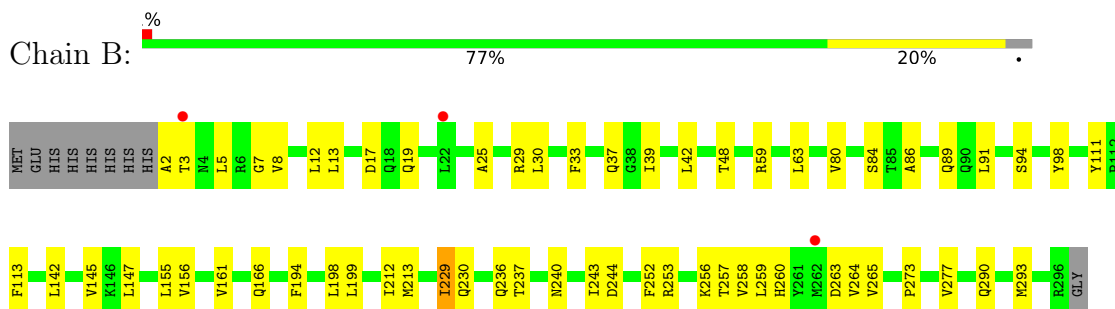
3 Residue-property plots [i](#)

These plots are drawn for all protein, RNA, DNA and oligosaccharide chains in the entry. The first graphic for a chain summarises the proportions of the various outlier classes displayed in the second graphic. The second graphic shows the sequence view annotated by issues in geometry and electron density. Residues are color-coded according to the number of geometric quality criteria for which they contain at least one outlier: green = 0, yellow = 1, orange = 2 and red = 3 or more. A red dot above a residue indicates a poor fit to the electron density ($RSRZ > 2$). Stretches of 2 or more consecutive residues without any outlier are shown as a green connector. Residues present in the sample, but not in the model, are shown in grey.

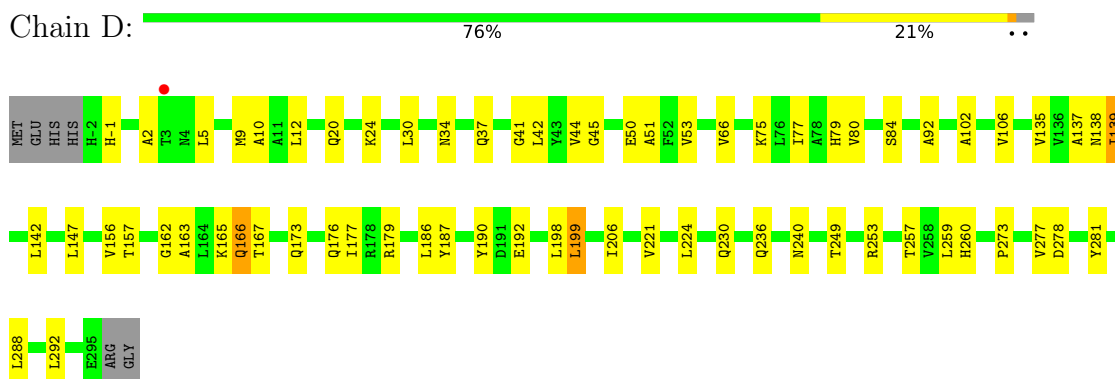
- Molecule 1: N-ACETYLNEURAMINATE LYASE



- Molecule 1: N-ACETYLNEURAMINATE LYASE

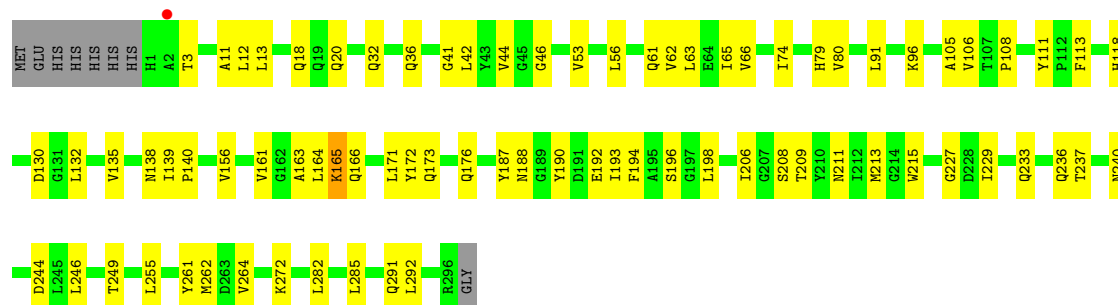


- Molecule 1: N-ACETYLNEURAMINATE LYASE



- Molecule 2: N-ACETYLNEURAMINATE LYASE

Chain C:  72% 25%



4 Data and refinement statistics i

Property	Value	Source
Space group	P 1 21 1	Depositor
Cell constants a, b, c, α , β , γ	55.97Å 143.22Å 83.41Å 90.00° 109.51° 90.00°	Depositor
Resolution (Å)	49.46 – 2.00 49.46 – 2.00	Depositor EDS
% Data completeness (in resolution range)	98.1 (49.46-2.00) 99.7 (49.46-2.00)	Depositor EDS
R_{merge}	0.09	Depositor
R_{sym}	(Not available)	Depositor
$\langle I/\sigma(I) \rangle$ ¹	1.47 (at 2.00Å)	Xtriage
Refinement program	REFMAC 5.5.0097	Depositor
R, R_{free}	0.180 , 0.235 0.185 , 0.227	Depositor DCC
R_{free} test set	4612 reflections (5.50%)	wwPDB-VP
Wilson B-factor (Å ²)	26.2	Xtriage
Anisotropy	0.179	Xtriage
Bulk solvent k_{sol} (e/Å ³), B_{sol} (Å ²)	0.34 , 25.1	EDS
L-test for twinning ²	$\langle L \rangle = 0.50$, $\langle L^2 \rangle = 0.33$	Xtriage
Estimated twinning fraction	0.107 for h,-k,-h-l	Xtriage
Reported twinning fraction	0.512 for H, K, L 0.488 for -H, -K, H+L	Depositor
Outliers	0 of 83318 reflections	Xtriage
F_o, F_c correlation	0.95	EDS
Total number of atoms	9360	wwPDB-VP
Average B, all atoms (Å ²)	27.0	wwPDB-VP

Xtriage's analysis on translational NCS is as follows: *The largest off-origin peak in the Patterson function is 5.45% of the height of the origin peak. No significant pseudotranslation is detected.*

¹Intensities estimated from amplitudes.

²Theoretical values of $\langle |L| \rangle$, $\langle L^2 \rangle$ for acentric reflections are 0.5, 0.333 respectively for untwinned datasets, and 0.375, 0.2 for perfectly twinned datasets.

5 Model quality [i](#)

5.1 Standard geometry [i](#)

Bond lengths and bond angles in the following residue types are not validated in this section: MN9, KPI, 1PE, SI3

The Z score for a bond length (or angle) is the number of standard deviations the observed value is removed from the expected value. A bond length (or angle) with $|Z| > 5$ is considered an outlier worth inspection. RMSZ is the root-mean-square of all Z scores of the bond lengths (or angles).

Mol	Chain	Bond lengths		Bond angles	
		RMSZ	# Z >5	RMSZ	# Z >5
1	A	0.70	0/2348	0.88	1/3178 (0.0%)
1	B	0.71	0/2311	0.90	1/3128 (0.0%)
1	D	0.73	0/2344	0.90	0/3174
2	C	0.72	0/2312	0.91	2/3129 (0.1%)
All	All	0.72	0/9315	0.90	4/12609 (0.0%)

There are no bond length outliers.

All (4) bond angle outliers are listed below:

Mol	Chain	Res	Type	Atoms	Z	Observed(°)	Ideal(°)
2	C	111	TYR	CA-C-N	-6.52	113.24	119.76
2	C	111	TYR	C-N-CA	-6.52	113.24	119.76
1	B	7	GLY	N-CA-C	5.39	118.03	110.38
1	A	81	GLY	N-CA-C	5.03	118.38	111.54

There are no chirality outliers.

There are no planarity outliers.

5.2 Too-close contacts [i](#)

In the following table, the Non-H and H(model) columns list the number of non-hydrogen atoms and hydrogen atoms in the chain respectively. The H(added) column lists the number of hydrogen atoms added and optimized by MolProbity. The Clashes column lists the number of clashes within the asymmetric unit, whereas Symm-Clashes lists symmetry-related clashes.

Mol	Chain	Non-H	H(model)	H(added)	Clashes	Symm-Clashes
1	A	2306	0	2320	60	0
1	B	2272	0	2293	37	0
1	D	2301	0	2312	51	0

Continued on next page...

Continued from previous page...

Mol	Chain	Non-H	H(model)	H(added)	Clashes	Symm-Clashes
2	C	2287	0	2305	68	0
3	A	20	0	18	1	0
3	B	20	0	18	0	0
3	D	20	0	18	1	0
4	B	9	0	10	0	0
4	C	8	0	9	0	0
5	C	15	0	15	8	0
6	A	34	0	0	0	0
6	B	22	0	0	1	0
6	C	22	0	0	1	0
6	D	24	0	0	2	0
All	All	9360	0	9318	205	0

The all-atom clashscore is defined as the number of clashes found per 1000 atoms (including hydrogen atoms). The all-atom clashscore for this structure is 11.

The worst 5 of 205 close contacts within the same asymmetric unit are listed below, sorted by their clash magnitude.

Atom-1	Atom-2	Interatomic distance (Å)	Clash overlap (Å)
2:C:165:KPI:C1	5:C:1297:MN9:H	1.74	1.16
1:B:2:ALA:HB1	1:B:5:LEU:HD12	1.36	1.07
1:D:139:ILE:HD11	1:D:142:LEU:HD12	1.37	1.05
2:C:165:KPI:H1B	5:C:1297:MN9:H	1.36	1.03
2:C:165:KPI:H1A	2:C:206:ILE:HG22	1.42	0.97

There are no symmetry-related clashes.

5.3 Torsion angles [i](#)

5.3.1 Protein backbone [i](#)

In the following table, the Percentiles column shows the percent Ramachandran outliers of the chain as a percentile score with respect to all X-ray entries followed by that with respect to entries of similar resolution.

The Analysed column shows the number of residues for which the backbone conformation was analysed, and the total number of residues.

Mol	Chain	Analysed	Favoured	Allowed	Outliers	Percentiles
1	A	297/304 (98%)	282 (95%)	13 (4%)	2 (1%)	18 14

Continued on next page...

Continued from previous page...

Mol	Chain	Analysed	Favoured	Allowed	Outliers	Percentiles	
1	B	293/304 (96%)	277 (94%)	15 (5%)	1 (0%)	36	35
1	D	296/304 (97%)	287 (97%)	9 (3%)	0	100	100
2	C	293/304 (96%)	279 (95%)	14 (5%)	0	100	100
All	All	1179/1216 (97%)	1125 (95%)	51 (4%)	3 (0%)	36	35

All (3) Ramachandran outliers are listed below:

Mol	Chain	Res	Type
1	A	263	ASP
1	B	37	GLN
1	A	1	HIS

5.3.2 Protein sidechains [i](#)

In the following table, the Percentiles column shows the percent sidechain outliers of the chain as a percentile score with respect to all X-ray entries followed by that with respect to entries of similar resolution.

The Analysed column shows the number of residues for which the sidechain conformation was analysed, and the total number of residues.

Mol	Chain	Analysed	Rotameric	Outliers	Percentiles	
1	A	245/250 (98%)	239 (98%)	6 (2%)	43	47
1	B	242/250 (97%)	236 (98%)	6 (2%)	42	45
1	D	245/250 (98%)	239 (98%)	6 (2%)	43	47
2	C	242/249 (97%)	239 (99%)	3 (1%)	63	70
All	All	974/999 (98%)	953 (98%)	21 (2%)	45	50

5 of 21 residues with a non-rotameric sidechain are listed below:

Mol	Chain	Res	Type
2	C	291	GLN
1	D	157	THR
1	D	230	GLN
1	D	166	GLN
1	D	139	ILE

Sometimes sidechains can be flipped to improve hydrogen bonding and reduce clashes. 5 of 43 such sidechains are listed below:

Mol	Chain	Res	Type
2	C	176	GLN
1	D	118	HIS
2	C	181	HIS
1	D	37	GLN
1	D	166	GLN

5.3.3 RNA [i](#)

There are no RNA molecules in this entry.

5.4 Non-standard residues in protein, DNA, RNA chains [i](#)

1 non-standard protein/DNA/RNA residue is modelled in this entry.

In the following table, the Counts columns list the number of bonds (or angles) for which Mogul statistics could be retrieved, the number of bonds (or angles) that are observed in the model and the number of bonds (or angles) that are defined in the Chemical Component Dictionary. The Link column lists molecule types, if any, to which the group is linked. The Z score for a bond length (or angle) is the number of standard deviations the observed value is removed from the expected value. A bond length (or angle) with $|Z| > 2$ is considered an outlier worth inspection. RMSZ is the root-mean-square of all Z scores of the bond lengths (or angles).

Mol	Type	Chain	Res	Link	Bond lengths			Bond angles		
					Counts	RMSZ	# Z > 2	Counts	RMSZ	# Z > 2
2	KPI	C	165	2	11,13,14	1.03	0	9,15,17	1.55	2 (22%)

In the following table, the Chirals column lists the number of chiral outliers, the number of chiral centers analysed, the number of these observed in the model and the number defined in the Chemical Component Dictionary. Similar counts are reported in the Torsion and Rings columns. '-' means no outliers of that kind were identified.

Mol	Type	Chain	Res	Link	Chirals	Torsions	Rings
2	KPI	C	165	2	-	0/13/14/16	-

There are no bond length outliers.

All (2) bond angle outliers are listed below:

Mol	Chain	Res	Type	Atoms	Z	Observed(°)	Ideal(°)
2	C	165	KPI	O2-CX2-CX1	-3.20	117.43	121.35
2	C	165	KPI	C1-CX1-CX2	2.35	120.33	118.11

There are no chirality outliers.

There are no torsion outliers.

There are no ring outliers.

1 monomer is involved in 11 short contacts:

Mol	Chain	Res	Type	Clashes	Symm-Clashes
2	C	165	KPI	11	0

5.5 Carbohydrates [i](#)

There are no oligosaccharides in this entry.

5.6 Ligand geometry [i](#)

6 ligands are modelled in this entry.

In the following table, the Counts columns list the number of bonds (or angles) for which Mogul statistics could be retrieved, the number of bonds (or angles) that are observed in the model and the number of bonds (or angles) that are defined in the Chemical Component Dictionary. The Link column lists molecule types, if any, to which the group is linked. The Z score for a bond length (or angle) is the number of standard deviations the observed value is removed from the expected value. A bond length (or angle) with $|Z| > 2$ is considered an outlier worth inspection. RMSZ is the root-mean-square of all Z scores of the bond lengths (or angles).

Mol	Type	Chain	Res	Link	Bond lengths			Bond angles		
					Counts	RMSZ	# Z > 2	Counts	RMSZ	# Z > 2
4	1PE	B	1297	-	8,8,15	0.82	0	7,7,14	0.63	0
4	1PE	C	1298	-	7,7,15	0.72	0	6,6,14	0.42	0
3	SI3	B	1165	1	19,19,20	1.85	3 (15%)	21,25,27	1.67	5 (23%)
5	MN9	C	1297	-	13,14,14	0.65	0	14,18,18	1.13	1 (7%)
3	SI3	A	1165	1	19,19,20	2.07	4 (21%)	21,25,27	1.51	3 (14%)
3	SI3	D	1165	1	19,19,20	2.04	3 (15%)	21,25,27	1.67	5 (23%)

In the following table, the Chirals column lists the number of chiral outliers, the number of chiral centers analysed, the number of these observed in the model and the number defined in the Chemical Component Dictionary. Similar counts are reported in the Torsions and Rings columns. '-' means no outliers of that kind were identified.

Mol	Type	Chain	Res	Link	Chirals	Torsions	Rings
4	1PE	B	1297	-	-	5/6/6/13	-
4	1PE	C	1298	-	-	3/5/5/13	-
3	SI3	B	1165	1	1/1/7/9	8/27/27/30	-

Continued on next page...

Continued from previous page...

Mol	Type	Chain	Res	Link	Chirals	Torsions	Rings
5	MN9	C	1297	-	-	6/19/20/20	-
3	SI3	A	1165	1	1/1/7/9	8/27/27/30	-
3	SI3	D	1165	1	1/1/7/9	12/27/27/30	-

The worst 5 of 10 bond length outliers are listed below:

Mol	Chain	Res	Type	Atoms	Z	Observed(Å)	Ideal(Å)
3	D	1165	SI3	O1B-C1	6.72	1.44	1.22
3	A	1165	SI3	O1B-C1	6.69	1.44	1.22
3	B	1165	SI3	O1B-C1	6.45	1.43	1.22
3	D	1165	SI3	C10-N5	3.85	1.46	1.34
3	B	1165	SI3	C10-N5	3.45	1.45	1.34

The worst 5 of 14 bond angle outliers are listed below:

Mol	Chain	Res	Type	Atoms	Z	Observed(°)	Ideal(°)
3	D	1165	SI3	C2-C3-C4	-4.45	105.69	114.81
3	A	1165	SI3	C2-C3-C4	-3.87	106.87	114.81
3	A	1165	SI3	C3-C2-C1	3.62	122.15	112.49
3	B	1165	SI3	C8-C7-C6	3.54	117.92	112.48
3	B	1165	SI3	C2-C3-C4	-2.96	108.74	114.81

All (3) chirality outliers are listed below:

Mol	Chain	Res	Type	Atom
3	A	1165	SI3	C4
3	B	1165	SI3	C4
3	D	1165	SI3	C4

5 of 42 torsion outliers are listed below:

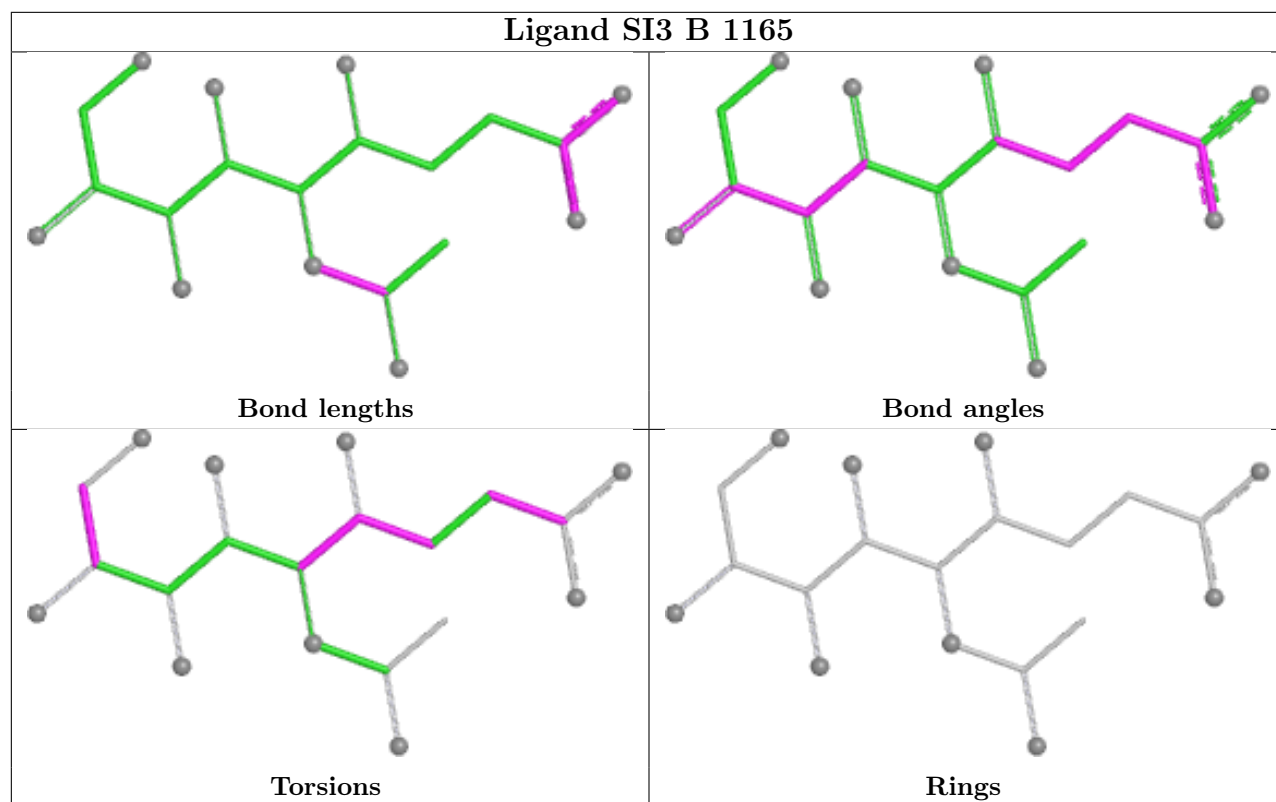
Mol	Chain	Res	Type	Atoms
3	A	1165	SI3	C1-C2-C3-C4
3	A	1165	SI3	C3-C4-C5-N5
3	A	1165	SI3	C3-C4-C5-C6
3	B	1165	SI3	C2-C3-C4-C5
3	B	1165	SI3	C3-C4-C5-N5

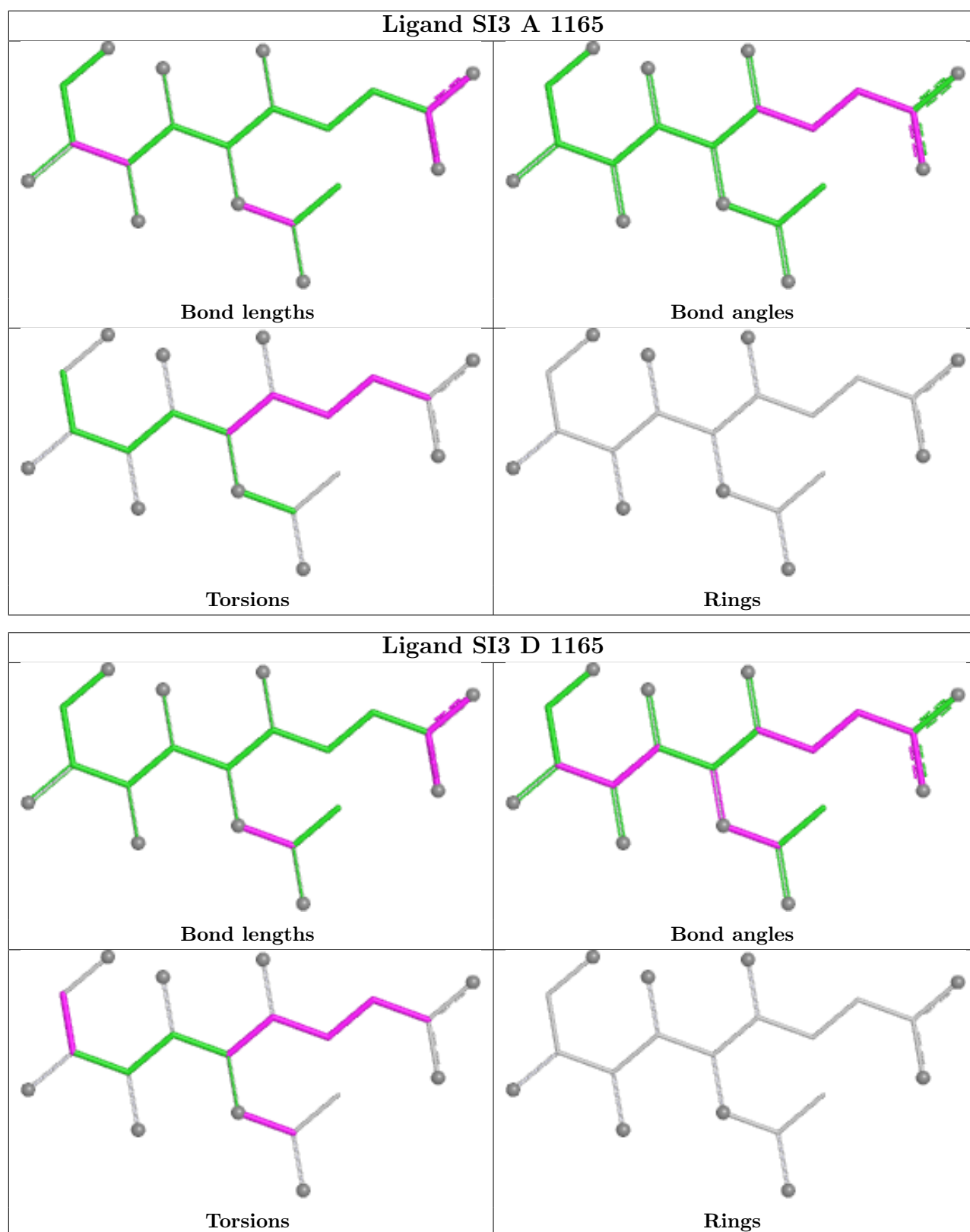
There are no ring outliers.

3 monomers are involved in 10 short contacts:

Mol	Chain	Res	Type	Clashes	Symm-Clashes
5	C	1297	MN9	8	0
3	A	1165	SI3	1	0
3	D	1165	SI3	1	0

The following is a two-dimensional graphical depiction of Mogul quality analysis of bond lengths, bond angles, torsion angles, and ring geometry for all instances of the Ligand of Interest. In addition, ligands with molecular weight > 250 and outliers as shown on the validation Tables will also be included. For torsion angles, if less than 5% of the Mogul distribution of torsion angles is within 10 degrees of the torsion angle in question, then that torsion angle is considered an outlier. Any bond that is central to one or more torsion angles identified as an outlier by Mogul will be highlighted in the graph. For rings, the root-mean-square deviation (RMSD) between the ring in question and similar rings identified by Mogul is calculated over all ring torsion angles. If the average RMSD is greater than 60 degrees and the minimal RMSD between the ring in question and any Mogul-identified rings is also greater than 60 degrees, then that ring is considered an outlier. The outliers are highlighted in purple. The color gray indicates Mogul did not find sufficient equivalents in the CSD to analyse the geometry.





5.7 Other polymers [i](#)

There are no such residues in this entry.

5.8 Polymer linkage issues

There are no chain breaks in this entry.

6 Fit of model and data [i](#)

6.1 Protein, DNA and RNA chains [i](#)

In the following table, the column labelled ‘#RSRZ > 2’ contains the number (and percentage) of RSRZ outliers, followed by percent RSRZ outliers for the chain as percentile scores relative to all X-ray entries and entries of similar resolution. The OWAB column contains the minimum, median, 95th percentile and maximum values of the occupancy-weighted average B-factor per residue. The column labelled ‘Q < 0.9’ lists the number of (and percentage) of residues with an average occupancy less than 0.9.

Mol	Chain	Analysed	<RSRZ>	#RSRZ>2	OWAB(Å ²)	Q<0.9
1	A	299/304 (98%)	0.03	4 (1%) 75 74	15, 27, 44, 58	4 (1%)
1	B	295/304 (97%)	-0.03	3 (1%) 79 79	17, 27, 36, 44	4 (1%)
1	D	298/304 (98%)	-0.14	1 (0%) 90 89	16, 25, 35, 52	1 (0%)
2	C	295/304 (97%)	-0.09	1 (0%) 90 89	17, 25, 38, 46	0
All	All	1187/1216 (97%)	-0.06	9 (0%) 82 82	15, 26, 39, 58	9 (0%)

The worst 5 of 9 RSRZ outliers are listed below:

Mol	Chain	Res	Type	RSRZ
1	A	268	PRO	3.3
1	B	22	LEU	2.8
1	A	1	HIS	2.6
1	D	3	THR	2.5
2	C	2	ALA	2.5

6.2 Non-standard residues in protein, DNA, RNA chains [i](#)

In the following table, the Atoms column lists the number of modelled atoms in the group and the number defined in the chemical component dictionary. The B-factors column lists the minimum, median, 95th percentile and maximum values of B factors of atoms in the group. The column labelled ‘Q < 0.9’ lists the number of atoms with occupancy less than 0.9.

Mol	Type	Chain	Res	Atoms	RSCC	RSR	B-factors(Å ²)	Q<0.9
2	KPI	C	165	14/15	0.95	0.08	16,20,28,30	0

6.3 Carbohydrates [i](#)

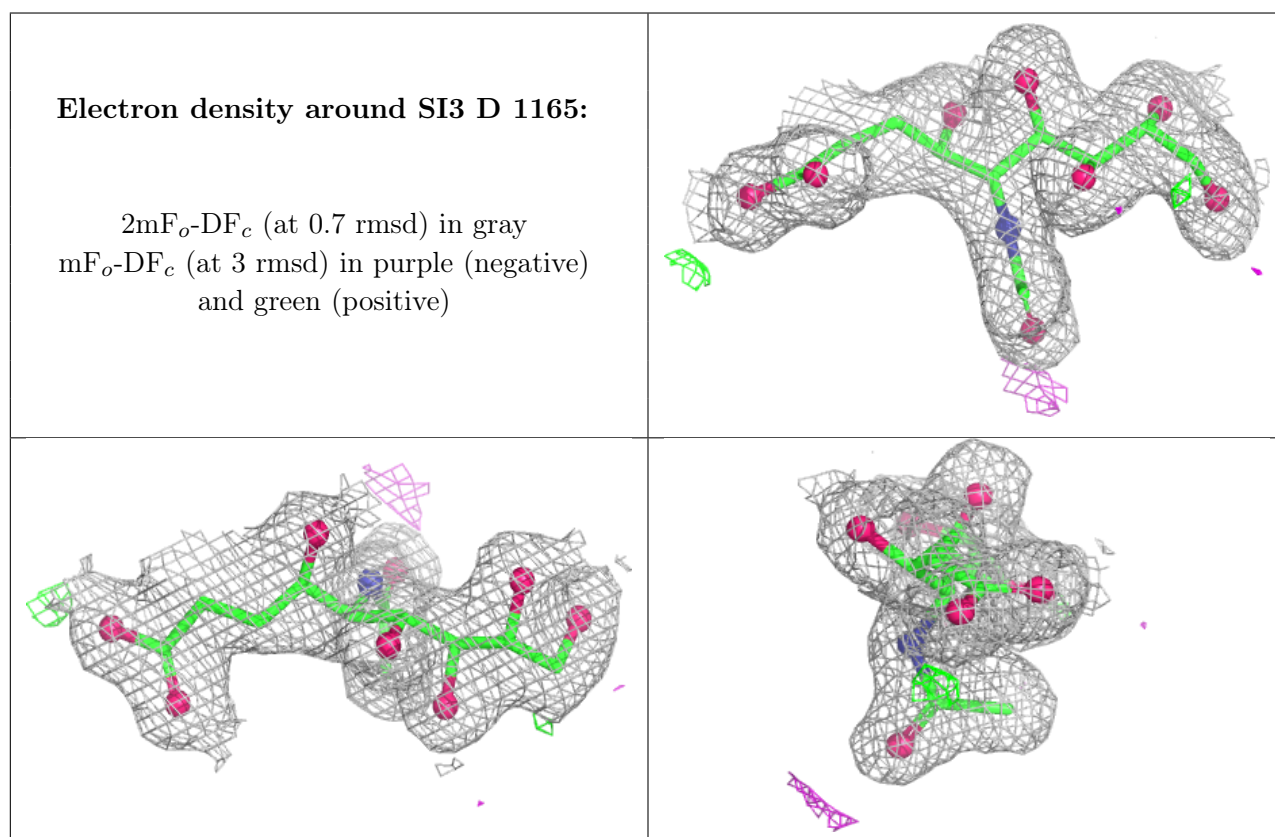
There are no oligosaccharides in this entry.

6.4 Ligands [i](#)

In the following table, the Atoms column lists the number of modelled atoms in the group and the number defined in the chemical component dictionary. The B-factors column lists the minimum, median, 95th percentile and maximum values of B factors of atoms in the group. The column labelled 'Q< 0.9' lists the number of atoms with occupancy less than 0.9.

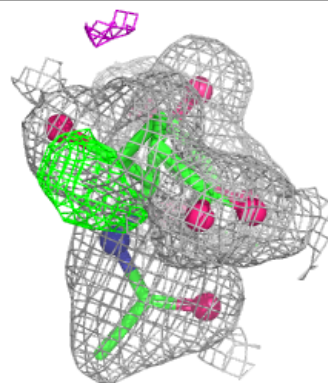
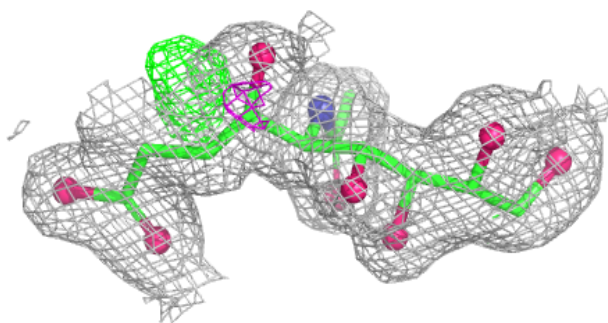
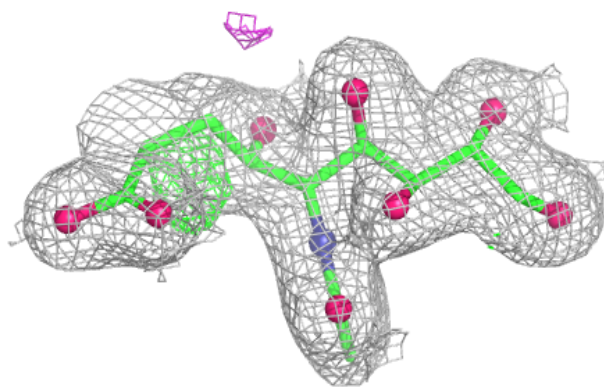
Mol	Type	Chain	Res	Atoms	RSCC	RSR	B-factors(Å ²)	Q<0.9
4	1PE	B	1297	9/16	0.89	0.12	24,30,33,34	0
4	1PE	C	1298	8/16	0.91	0.12	38,39,41,42	0
3	SI3	D	1165	20/21	0.93	0.08	20,24,27,29	0
3	SI3	B	1165	20/21	0.94	0.07	19,26,31,33	0
3	SI3	A	1165	20/21	0.96	0.06	20,25,31,31	0
5	MN9	C	1297	15/15	0.96	0.07	13,25,28,31	0

The following is a graphical depiction of the model fit to experimental electron density of all instances of the Ligand of Interest. In addition, ligands with molecular weight > 250 and outliers as shown on the geometry validation Tables will also be included. Each fit is shown from different orientation to approximate a three-dimensional view.

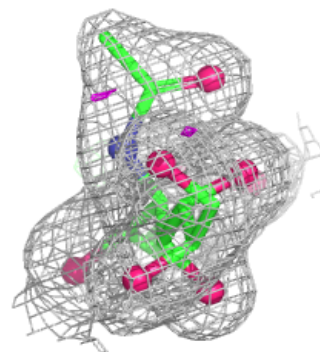
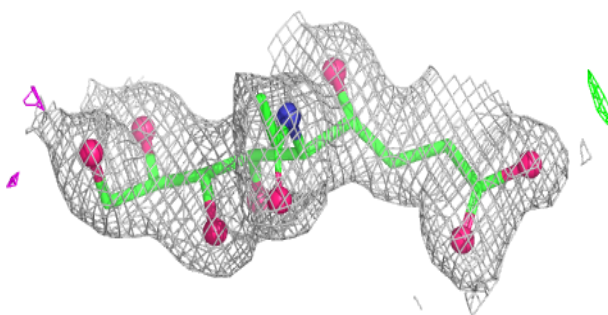
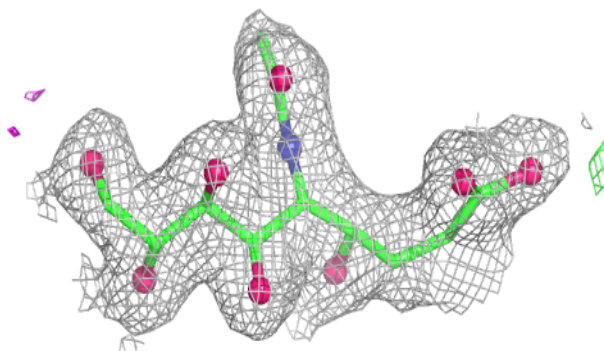


Electron density around SI3 B 1165:

$2mF_o-DF_c$ (at 0.7 rmsd) in gray
 mF_o-DF_c (at 3 rmsd) in purple (negative)
and green (positive)

**Electron density around SI3 A 1165:**

$2mF_o-DF_c$ (at 0.7 rmsd) in gray
 mF_o-DF_c (at 3 rmsd) in purple (negative)
and green (positive)



6.5 Other polymers [i](#)

There are no such residues in this entry.