



Full wwPDB X-ray Structure Validation Report ⓘ

Mar 20, 2026 – 04:20 AM UTC

PDB ID : 2BXP / pdb_00002bxp
Title : Human serum albumin complexed with myristate and phenylbutazone
Authors : Ghuman, J.; Zunszain, P.A.; Petitpas, I.; Bhattacharya, A.A.; Curry, S.
Deposited on : 2005-07-26
Resolution : 2.30 Å(reported)

This is a Full wwPDB X-ray Structure Validation Report for a publicly released PDB entry.

We welcome your comments at validation@mail.wwpdb.org

A user guide is available at

<https://www.wwpdb.org/validation/2017/XrayValidationReportHelp>

with specific help available everywhere you see the ⓘ symbol.

The types of validation reports are described at

<http://www.wwpdb.org/validation/2017/FAQs#types>.

The following versions of software and data (see [references ⓘ](#)) were used in the production of this report:

MolProbity : 4-5-2 with Phenix2.0
Mogul : 2022.3.0, CSD as543be (2022)
Xtriage (Phenix) : 2.0
EDS : 3.0
Buster-report : wwPDB partial adaption of 1.1.7 (2018)
Percentile statistics : 20250101.v01 (using entries in the PDB archive January 1st 2025)
CCP4 : 9.0.010 (Gargrove)
Density-Fitness : 1.0.12
Ideal geometry (proteins) : Engh & Huber (2001)
Ideal geometry (DNA, RNA) : Parkinson et al. (1996)
Validation Pipeline (wwPDB-VP) : 2.49

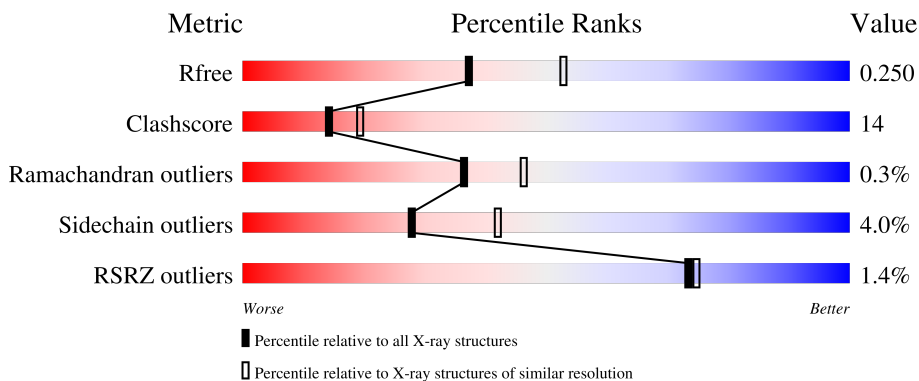
1 Overall quality at a glance

The following experimental techniques were used to determine the structure:

X-RAY DIFFRACTION

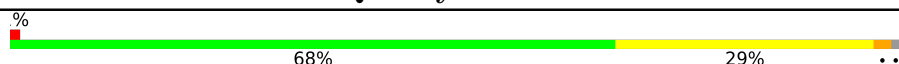
The reported resolution of this entry is 2.30 Å.

Percentile scores (ranging between 0-100) for global validation metrics of the entry are shown in the following graphic. The table shows the number of entries on which the scores are based.



Metric	Whole archive (#Entries)	Similar resolution (#Entries, resolution range(Å))
R_{free}	180053	6319 (2.30-2.30)
Clashscore	190562	6919 (2.30-2.30)
Ramachandran outliers	187476	6854 (2.30-2.30)
Sidechain outliers	187428	6854 (2.30-2.30)
RSRZ outliers	180081	6325 (2.30-2.30)

The table below summarises the geometric issues observed across the polymeric chains and their fit to the electron density. The red, orange, yellow and green segments of the lower bar indicate the fraction of residues that contain outliers for ≥ 3 , 2, 1 and 0 types of geometric quality criteria respectively. A grey segment represents the fraction of residues that are not modelled. The numeric value for each fraction is indicated below the corresponding segment, with a dot representing fractions $\leq 5\%$. The upper red bar (where present) indicates the fraction of residues that have poor fit to the electron density. The numeric value is given above the bar.

Mol	Chain	Length	Quality of chain
1	A	585	

2 Entry composition [i](#)

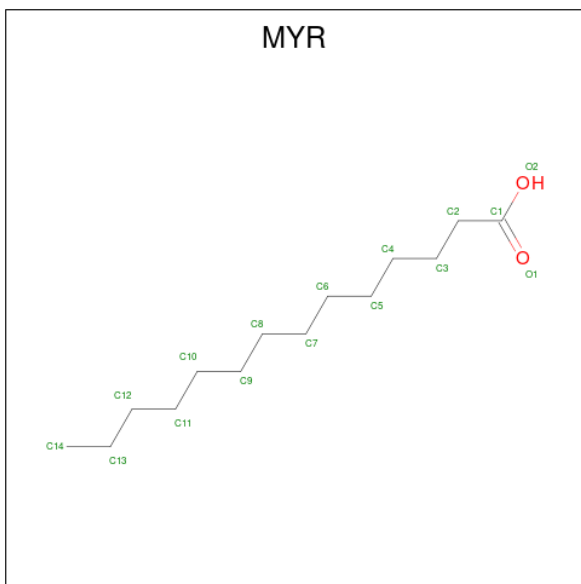
There are 4 unique types of molecules in this entry. The entry contains 4651 atoms, of which 0 are hydrogens and 0 are deuteriums.

In the tables below, the ZeroOcc column contains the number of atoms modelled with zero occupancy, the AltConf column contains the number of residues with at least one atom in alternate conformation and the Trace column contains the number of residues modelled with at most 2 atoms.

- Molecule 1 is a protein called SERUM ALBUMIN.

Mol	Chain	Residues	Atoms					ZeroOcc	AltConf	Trace
			Total	C	N	O	S			
1	A	581	4517	2857	757	862	41	0	0	0

- Molecule 2 is MYRISTIC ACID (CCD ID: MYR) (formula: $C_{14}H_{28}O_2$).



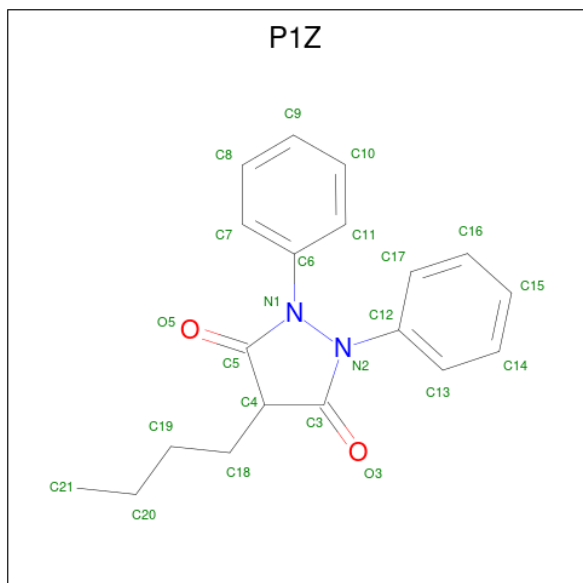
Mol	Chain	Residues	Atoms			ZeroOcc	AltConf
2	A	1	Total	C	O	0	0
			16	14	2		
2	A	1	Total	C	O	0	0
			12	10	2		
2	A	1	Total	C	O	0	0
			16	14	2		
2	A	1	Total	C	O	0	0
			16	14	2		
2	A	1	Total	C	O	0	0
			11	9	2		

Continued on next page...

Continued from previous page...

Mol	Chain	Residues	Atoms	ZeroOcc	AltConf
2	A	1	Total C O 16 14 2	0	0
2	A	1	Total C 9 9	0	0

- Molecule 3 is 4-BUTYL-1,2-DIPHENYL-PYRAZOLIDINE-3,5-DIONE (CCD ID: P1Z) (formula: C₁₉H₂₀N₂O₂).



Mol	Chain	Residues	Atoms	ZeroOcc	AltConf
3	A	1	Total C N O 23 19 2 2	0	0

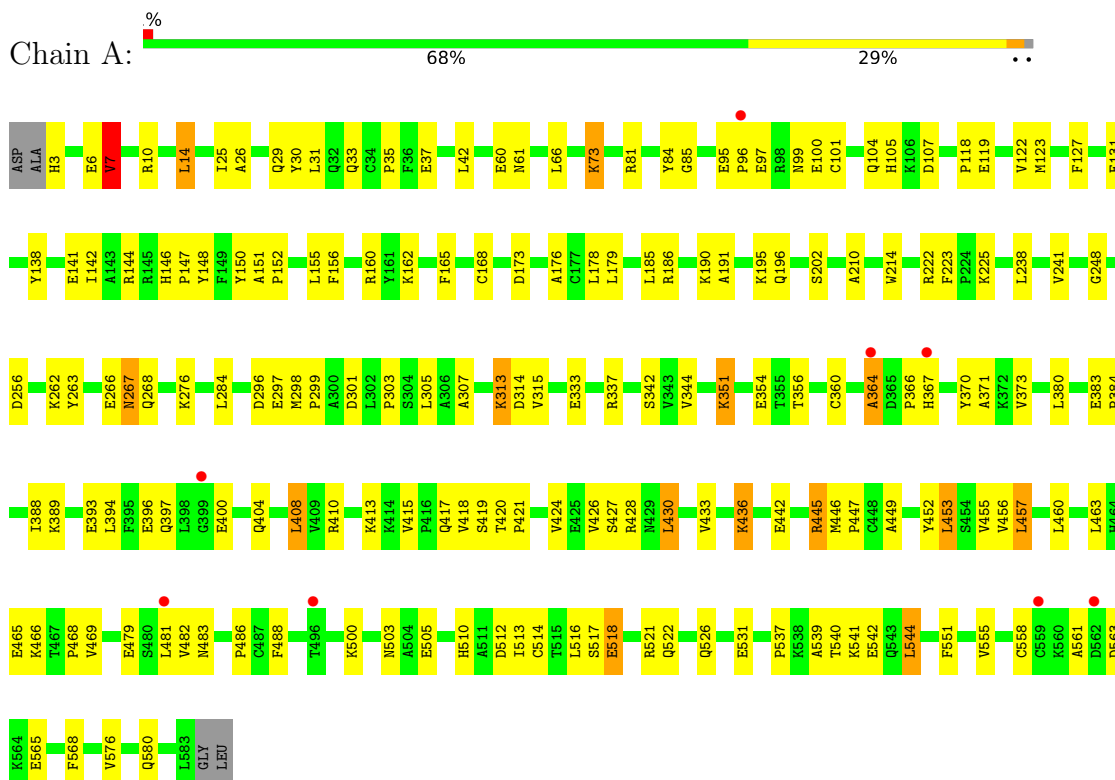
- Molecule 4 is water.

Mol	Chain	Residues	Atoms	ZeroOcc	AltConf
4	A	15	Total O 15 15	0	0

3 Residue-property plots [i](#)

These plots are drawn for all protein, RNA, DNA and oligosaccharide chains in the entry. The first graphic for a chain summarises the proportions of the various outlier classes displayed in the second graphic. The second graphic shows the sequence view annotated by issues in geometry and electron density. Residues are color-coded according to the number of geometric quality criteria for which they contain at least one outlier: green = 0, yellow = 1, orange = 2 and red = 3 or more. A red dot above a residue indicates a poor fit to the electron density ($RSRZ > 2$). Stretches of 2 or more consecutive residues without any outlier are shown as a green connector. Residues present in the sample, but not in the model, are shown in grey.

• Molecule 1: SERUM ALBUMIN



4 Data and refinement statistics

Property	Value	Source
Space group	C 1 2 1	Depositor
Cell constants a, b, c, α , β , γ	186.65Å 38.76Å 95.89Å 90.00° 105.16° 90.00°	Depositor
Resolution (Å)	34.41 – 2.30 34.41 – 2.30	Depositor EDS
% Data completeness (in resolution range)	96.1 (34.41-2.30) 96.1 (34.41-2.30)	Depositor EDS
R_{merge}	0.06	Depositor
R_{sym}	(Not available)	Depositor
$\langle I/\sigma(I) \rangle$ ¹	2.19 (at 2.29Å)	Xtrriage
Refinement program	CNS 1.1	Depositor
R, R_{free}	0.211 , 0.250 0.216 , 0.250	Depositor DCC
R_{free} test set	1396 reflections (4.83%)	wwPDB-VP
Wilson B-factor (Å ²)	44.3	Xtrriage
Anisotropy	0.331	Xtrriage
Bulk solvent k_{sol} (e/Å ³), B_{sol} (Å ²)	0.29 , 37.2	EDS
L-test for twinning ²	$\langle L \rangle = 0.49$, $\langle L^2 \rangle = 0.32$	Xtrriage
Estimated twinning fraction	No twinning to report.	Xtrriage
F_o, F_c correlation	0.96	EDS
Total number of atoms	4651	wwPDB-VP
Average B, all atoms (Å ²)	51.0	wwPDB-VP

Xtrriage's analysis on translational NCS is as follows: *The largest off-origin peak in the Patterson function is 7.42% of the height of the origin peak. No significant pseudotranslation is detected.*

¹Intensities estimated from amplitudes.

²Theoretical values of $\langle |L| \rangle$, $\langle L^2 \rangle$ for acentric reflections are 0.5, 0.333 respectively for untwinned datasets, and 0.375, 0.2 for perfectly twinned datasets.

5 Model quality [i](#)

5.1 Standard geometry [i](#)

Bond lengths and bond angles in the following residue types are not validated in this section: MYR, P1Z

The Z score for a bond length (or angle) is the number of standard deviations the observed value is removed from the expected value. A bond length (or angle) with $|Z| > 5$ is considered an outlier worth inspection. RMSZ is the root-mean-square of all Z scores of the bond lengths (or angles).

Mol	Chain	Bond lengths		Bond angles	
		RMSZ	# Z >5	RMSZ	# Z >5
1	A	0.44	0/4606	0.92	11/6237 (0.2%)

There are no bond length outliers.

All (11) bond angle outliers are listed below:

Mol	Chain	Res	Type	Atoms	Z	Observed(°)	Ideal(°)
1	A	178	LEU	N-CA-C	7.11	118.82	111.14
1	A	168	CYS	N-CA-C	6.85	119.59	111.71
1	A	360	CYS	N-CA-C	6.49	119.34	111.82
1	A	342	SER	N-CA-C	-6.30	102.04	110.55
1	A	298	MET	CA-C-N	6.27	126.74	119.47
1	A	298	MET	C-N-CA	6.27	126.74	119.47
1	A	313	LYS	N-CA-C	-5.90	100.67	110.17
1	A	248	GLY	N-CA-C	5.33	121.84	114.92
1	A	445	ARG	N-CA-C	5.26	116.82	111.14
1	A	7	VAL	CB-CA-C	-5.12	105.32	111.88
1	A	296	ASP	N-CA-C	-5.07	103.71	110.55

There are no chirality outliers.

There are no planarity outliers.

5.2 Too-close contacts [i](#)

In the following table, the Non-H and H(model) columns list the number of non-hydrogen atoms and hydrogen atoms in the chain respectively. The H(added) column lists the number of hydrogen atoms added and optimized by MolProbity. The Clashes column lists the number of clashes within the asymmetric unit, whereas Symm-Clashes lists symmetry-related clashes.

Mol	Chain	Non-H	H(model)	H(added)	Clashes	Symm-Clashes
1	A	4517	0	4323	130	0
2	A	96	0	152	6	0
3	A	23	0	19	4	0
4	A	15	0	0	1	0
All	All	4651	0	4494	130	0

The all-atom clashscore is defined as the number of clashes found per 1000 atoms (including hydrogen atoms). The all-atom clashscore for this structure is 14.

All (130) close contacts within the same asymmetric unit are listed below, sorted by their clash magnitude.

Atom-1	Atom-2	Interatomic distance (Å)	Clash overlap (Å)
1:A:540:THR:HG22	1:A:542:GLU:H	1.40	0.86
1:A:266:GLU:C	1:A:267:ASN:HD22	1.92	0.78
1:A:37:GLU:H	1:A:37:GLU:CD	1.90	0.77
1:A:389:LYS:O	1:A:393:GLU:HG3	1.86	0.76
1:A:267:ASN:HD22	1:A:267:ASN:N	1.80	0.76
1:A:418:VAL:HG21	2:A:1004:MYR:H143	1.69	0.74
1:A:356:THR:HG21	1:A:373:VAL:HG22	1.69	0.74
1:A:370:TYR:O	1:A:373:VAL:HG23	1.87	0.73
1:A:500:LYS:HE3	1:A:531:GLU:OE1	1.88	0.73
1:A:424:VAL:O	1:A:428:ARG:HG3	1.91	0.69
1:A:131:GLU:OE2	1:A:162:LYS:HE3	1.93	0.69
1:A:551:PHE:O	1:A:555:VAL:HG23	1.92	0.68
1:A:150:TYR:H	1:A:196:GLN:HE22	1.41	0.66
1:A:576:VAL:O	1:A:580:GLN:HG3	1.97	0.65
1:A:313:LYS:O	1:A:314:ASP:HB2	1.96	0.65
1:A:384:PRO:O	1:A:388:ILE:HG12	1.96	0.65
1:A:225:LYS:HE3	1:A:297:GLU:O	1.97	0.64
1:A:138:TYR:O	1:A:142:ILE:HG12	1.99	0.63
1:A:410:ARG:HH11	1:A:410:ARG:HG3	1.64	0.62
1:A:517:SER:O	1:A:521:ARG:HG3	2.00	0.62
1:A:460:LEU:HD11	2:A:1004:MYR:H141	1.84	0.59
1:A:95:GLU:O	1:A:96:PRO:C	2.44	0.59
1:A:119:GLU:O	1:A:122:VAL:HG22	2.02	0.59
1:A:10:ARG:HG3	1:A:66:LEU:HD11	1.84	0.59
1:A:400:GLU:O	1:A:404:GLN:HG3	2.02	0.59
1:A:430:LEU:HD13	1:A:456:VAL:HG11	1.84	0.58
1:A:118:PRO:HB2	1:A:122:VAL:HG21	1.86	0.58
1:A:107:ASP:O	1:A:147:PRO:HG3	2.05	0.57
1:A:436:LYS:HD3	1:A:452:TYR:OH	2.04	0.57
1:A:10:ARG:O	1:A:14:LEU:HB2	2.05	0.56

Continued on next page...

Continued from previous page...

Atom-1	Atom-2	Interatomic distance (Å)	Clash overlap (Å)
1:A:367:HIS:O	1:A:371:ALA:HB2	2.06	0.56
1:A:540:THR:HG22	1:A:541:LYS:N	2.19	0.56
1:A:127:PHE:CE1	1:A:131:GLU:HG3	2.41	0.56
1:A:241:VAL:HG22	1:A:256:ASP:HB3	1.88	0.56
1:A:118:PRO:HB2	1:A:122:VAL:CG2	2.35	0.55
1:A:513:ILE:HD12	1:A:514:CYS:N	2.21	0.55
1:A:303:PRO:O	1:A:337:ARG:NH1	2.39	0.55
1:A:408:LEU:HD13	1:A:427:SER:CB	2.37	0.55
1:A:488:PHE:HB3	2:A:1004:MYR:H71	1.89	0.55
1:A:518:GLU:O	1:A:522:GLN:HG3	2.07	0.55
1:A:96:PRO:HG2	1:A:97:GLU:OE1	2.07	0.54
1:A:222:ARG:HG3	1:A:222:ARG:HH11	1.72	0.54
1:A:42:LEU:HD22	1:A:73:LYS:HD2	1.89	0.54
1:A:344:VAL:HG23	1:A:482:VAL:HA	1.89	0.54
1:A:452:TYR:O	1:A:455:VAL:HG22	2.07	0.54
1:A:558:CYS:HB3	1:A:568:PHE:CE1	2.42	0.54
1:A:364:ALA:O	1:A:366:PRO:HD3	2.07	0.54
1:A:393:GLU:O	1:A:396:GLU:HB2	2.08	0.53
1:A:267:ASN:N	1:A:267:ASN:ND2	2.51	0.53
1:A:483:ASN:C	1:A:486:PRO:HD2	2.34	0.53
1:A:540:THR:CG2	1:A:541:LYS:N	2.71	0.53
1:A:417:GLN:HB3	1:A:469:VAL:HG12	1.91	0.53
1:A:558:CYS:HB3	1:A:568:PHE:CD1	2.44	0.52
1:A:513:ILE:HD12	1:A:513:ILE:C	2.34	0.52
1:A:146:HIS:HD2	1:A:148:TYR:OH	1.93	0.52
1:A:436:LYS:HB2	1:A:436:LYS:NZ	2.24	0.52
1:A:442:GLU:HA	1:A:445:ARG:HD2	1.91	0.52
1:A:313:LYS:O	1:A:314:ASP:CB	2.57	0.52
1:A:223:PHE:CE2	3:A:3001:P1Z:H8	2.44	0.52
1:A:118:PRO:HG2	1:A:123:MET:CG	2.40	0.52
1:A:351:LYS:NZ	1:A:354:GLU:OE1	2.35	0.52
1:A:510:HIS:HB2	1:A:512:ASP:OD1	2.10	0.51
1:A:262:LYS:O	1:A:266:GLU:HG3	2.11	0.51
1:A:151:ALA:HB3	1:A:152:PRO:HD3	1.92	0.51
1:A:539:ALA:HB1	1:A:544:LEU:HD13	1.93	0.51
1:A:95:GLU:O	1:A:95:GLU:OE2	2.29	0.50
1:A:222:ARG:HG3	1:A:222:ARG:NH1	2.25	0.50
1:A:419:SER:OG	1:A:421:PRO:HD2	2.12	0.50
1:A:415:VAL:HG23	1:A:415:VAL:O	2.13	0.49
1:A:305:LEU:HD21	1:A:333:GLU:HB3	1.95	0.49
1:A:383:GLU:HB3	1:A:384:PRO:CD	2.43	0.49

Continued on next page...

Continued from previous page...

Atom-1	Atom-2	Interatomic distance (Å)	Clash overlap (Å)
1:A:141:GLU:OE1	1:A:144:ARG:HD3	2.13	0.48
1:A:420:THR:N	1:A:421:PRO:HD2	2.29	0.48
1:A:449:ALA:O	1:A:453:LEU:HB2	2.14	0.47
1:A:191:ALA:O	1:A:195:LYS:HG3	2.14	0.47
1:A:25:ILE:O	1:A:29:GLN:HG3	2.14	0.47
1:A:210:ALA:HB1	2:A:1009:MYR:H81	1.97	0.47
1:A:512:ASP:O	1:A:516:LEU:HG	2.15	0.47
1:A:6:GLU:HB3	1:A:66:LEU:HG	1.97	0.47
1:A:351:LYS:O	1:A:351:LYS:HE3	2.14	0.47
1:A:388:ILE:HD11	2:A:1003:MYR:H52	1.97	0.47
1:A:238:LEU:HD13	3:A:3001:P1Z:H11	1.97	0.46
1:A:455:VAL:HG23	1:A:456:VAL:N	2.30	0.46
1:A:101:CYS:O	1:A:105:HIS:CD2	2.67	0.46
1:A:299:PRO:C	1:A:301:ASP:H	2.24	0.46
1:A:433:VAL:HG22	1:A:452:TYR:HB3	1.97	0.46
1:A:408:LEU:HD13	1:A:427:SER:HB2	1.99	0.45
1:A:394:LEU:HA	1:A:397:GLN:NE2	2.32	0.45
1:A:465:GLU:O	1:A:468:PRO:HD3	2.17	0.45
1:A:446:MET:HB3	1:A:447:PRO:HD3	1.99	0.45
1:A:155:LEU:HD23	1:A:284:LEU:HD21	1.99	0.44
1:A:344:VAL:CG2	1:A:482:VAL:HA	2.46	0.44
1:A:138:TYR:HB3	2:A:1001:MYR:H112	2.00	0.44
1:A:7:VAL:HG22	4:A:2001:HOH:O	2.18	0.44
1:A:60:GLU:O	1:A:61:ASN:HB2	2.18	0.43
1:A:186:ARG:O	1:A:190:LYS:HG3	2.19	0.43
1:A:214:TRP:HZ3	3:A:3001:P1Z:H213	1.82	0.43
1:A:223:PHE:HE2	3:A:3001:P1Z:H8	1.81	0.43
1:A:100:GLU:O	1:A:104:GLN:HG3	2.19	0.43
1:A:118:PRO:HG2	1:A:123:MET:HG3	1.99	0.43
1:A:268:GLN:OE1	1:A:276:LYS:HA	2.19	0.43
1:A:95:GLU:OE2	1:A:99:ASN:HB2	2.19	0.43
1:A:513:ILE:HD11	1:A:568:PHE:HZ	1.84	0.43
1:A:408:LEU:HD21	1:A:526:GLN:HB3	2.01	0.43
1:A:453:LEU:HD12	1:A:453:LEU:HA	1.87	0.43
1:A:565:GLU:HA	1:A:565:GLU:OE1	2.18	0.43
1:A:173:ASP:OD2	1:A:176:ALA:HB2	2.18	0.42
1:A:262:LYS:HE3	1:A:262:LYS:HB2	1.93	0.42
1:A:202:SER:OG	1:A:481:LEU:HD11	2.18	0.42
1:A:410:ARG:HG3	1:A:410:ARG:NH1	2.32	0.42
1:A:426:VAL:HG21	1:A:460:LEU:HD13	2.01	0.42
1:A:370:TYR:C	1:A:370:TYR:CD1	2.98	0.42

Continued on next page...

Continued from previous page...

Atom-1	Atom-2	Interatomic distance (Å)	Clash overlap (Å)
1:A:81:ARG:O	1:A:85:GLY:HA2	2.19	0.42
1:A:463:LEU:O	1:A:466:LYS:HB2	2.20	0.42
1:A:101:CYS:O	1:A:105:HIS:HD2	2.04	0.41
1:A:500:LYS:NZ	1:A:531:GLU:O	2.54	0.41
1:A:37:GLU:CD	1:A:37:GLU:N	2.67	0.41
1:A:156:PHE:CE2	1:A:160:ARG:HD2	2.55	0.41
1:A:123:MET:HE2	1:A:165:PHE:CZ	2.55	0.41
1:A:469:VAL:HG12	1:A:469:VAL:O	2.21	0.41
1:A:457:LEU:HA	1:A:457:LEU:HD12	1.88	0.41
1:A:561:ALA:C	1:A:563:ASP:N	2.78	0.41
1:A:413:LYS:HE2	1:A:537:PRO:O	2.21	0.41
1:A:262:LYS:HG3	1:A:263:TYR:N	2.36	0.40
1:A:408:LEU:HD12	1:A:408:LEU:HA	1.95	0.40
1:A:26:ALA:O	1:A:30:TYR:HD2	2.04	0.40
1:A:35:PRO:HB2	1:A:37:GLU:OE1	2.22	0.40
1:A:503:ASN:OD1	1:A:505:GLU:HB2	2.21	0.40
1:A:305:LEU:CD2	1:A:333:GLU:HB3	2.50	0.40
1:A:33:GLN:HB2	1:A:84:TYR:CZ	2.56	0.40

There are no symmetry-related clashes.

5.3 Torsion angles

5.3.1 Protein backbone

In the following table, the Percentiles column shows the percent Ramachandran outliers of the chain as a percentile score with respect to all X-ray entries followed by that with respect to entries of similar resolution.

The Analysed column shows the number of residues for which the backbone conformation was analysed, and the total number of residues.

Mol	Chain	Analysed	Favoured	Allowed	Outliers	Percentiles
1	A	579/585 (99%)	535 (92%)	42 (7%)	2 (0%)	36 46

All (2) Ramachandran outliers are listed below:

Mol	Chain	Res	Type
1	A	307	ALA
1	A	364	ALA

5.3.2 Protein sidechains [i](#)

In the following table, the Percentiles column shows the percent sidechain outliers of the chain as a percentile score with respect to all X-ray entries followed by that with respect to entries of similar resolution.

The Analysed column shows the number of residues for which the sidechain conformation was analysed, and the total number of residues.

Mol	Chain	Analysed	Rotameric	Outliers	Percentiles
1	A	478/511 (94%)	459 (96%)	19 (4%)	28 42

All (19) residues with a non-rotameric sidechain are listed below:

Mol	Chain	Res	Type
1	A	3	HIS
1	A	7	VAL
1	A	14	LEU
1	A	31	LEU
1	A	73	LYS
1	A	179	LEU
1	A	185	LEU
1	A	267	ASN
1	A	315	VAL
1	A	351	LYS
1	A	380	LEU
1	A	408	LEU
1	A	430	LEU
1	A	436	LYS
1	A	453	LEU
1	A	457	LEU
1	A	479	GLU
1	A	518	GLU
1	A	544	LEU

Sometimes sidechains can be flipped to improve hydrogen bonding and reduce clashes. All (13) such sidechains are listed below:

Mol	Chain	Res	Type
1	A	32	GLN
1	A	39	HIS
1	A	105	HIS
1	A	111	ASN
1	A	146	HIS
1	A	196	GLN

Continued on next page...

Continued from previous page...

Mol	Chain	Res	Type
1	A	267	ASN
1	A	268	GLN
1	A	288	HIS
1	A	318	ASN
1	A	338	HIS
1	A	397	GLN
1	A	483	ASN

5.3.3 RNA [i](#)

There are no RNA molecules in this entry.

5.4 Non-standard residues in protein, DNA, RNA chains [i](#)

There are no non-standard protein/DNA/RNA residues in this entry.

5.5 Carbohydrates [i](#)

There are no oligosaccharides in this entry.

5.6 Ligand geometry [i](#)

8 ligands are modelled in this entry.

In the following table, the Counts columns list the number of bonds (or angles) for which Mogul statistics could be retrieved, the number of bonds (or angles) that are observed in the model and the number of bonds (or angles) that are defined in the Chemical Component Dictionary. The Link column lists molecule types, if any, to which the group is linked. The Z score for a bond length (or angle) is the number of standard deviations the observed value is removed from the expected value. A bond length (or angle) with $|Z| > 2$ is considered an outlier worth inspection. RMSZ is the root-mean-square of all Z scores of the bond lengths (or angles).

Mol	Type	Chain	Res	Link	Bond lengths			Bond angles		
					Counts	RMSZ	$\# Z > 2$	Counts	RMSZ	$\# Z > 2$
2	MYR	A	1005	-	10,10,15	0.74	0	10,10,15	1.12	1 (10%)
2	MYR	A	1004	-	15,15,15	0.62	0	15,15,15	1.00	1 (6%)
3	P1Z	A	3001	-	23,25,25	2.69	6 (26%)	23,34,34	1.07	2 (8%)
2	MYR	A	1006	-	15,15,15	0.59	0	15,15,15	1.04	1 (6%)
2	MYR	A	1009	-	8,8,15	0.24	0	7,7,15	0.66	0
2	MYR	A	1001	-	15,15,15	0.61	0	15,15,15	1.01	1 (6%)

Mol	Type	Chain	Res	Link	Bond lengths			Bond angles		
					Counts	RMSZ	# Z > 2	Counts	RMSZ	# Z > 2
2	MYR	A	1002	-	11,11,15	0.82	0	11,11,15	1.08	1 (9%)
2	MYR	A	1003	-	15,15,15	0.62	0	15,15,15	0.99	1 (6%)

In the following table, the Chirals column lists the number of chiral outliers, the number of chiral centers analysed, the number of these observed in the model and the number defined in the Chemical Component Dictionary. Similar counts are reported in the Torsion and Rings columns. '-' means no outliers of that kind were identified.

Mol	Type	Chain	Res	Link	Chirals	Torsions	Rings
2	MYR	A	1005	-	-	7/8/8/13	-
2	MYR	A	1004	-	-	9/13/13/13	-
3	P1Z	A	3001	-	-	3/12/32/32	0/3/3/3
2	MYR	A	1006	-	-	8/13/13/13	-
2	MYR	A	1009	-	-	4/6/6/13	-
2	MYR	A	1001	-	-	11/13/13/13	-
2	MYR	A	1002	-	-	3/9/9/13	-
2	MYR	A	1003	-	-	12/13/13/13	-

All (6) bond length outliers are listed below:

Mol	Chain	Res	Type	Atoms	Z	Observed(Å)	Ideal(Å)
3	A	3001	P1Z	C4-C3	-7.49	1.39	1.52
3	A	3001	P1Z	C4-C5	-7.47	1.39	1.52
3	A	3001	P1Z	C10-C11	2.59	1.43	1.38
3	A	3001	P1Z	O5-C5	2.42	1.26	1.22
3	A	3001	P1Z	C13-C12	2.38	1.43	1.39
3	A	3001	P1Z	O3-C3	2.13	1.26	1.22

All (8) bond angle outliers are listed below:

Mol	Chain	Res	Type	Atoms	Z	Observed(°)	Ideal(°)
3	A	3001	P1Z	O3-C3-C4	2.79	130.78	127.26
2	A	1005	MYR	C4-C3-C2	-2.35	104.50	113.13
2	A	1003	MYR	C4-C3-C2	-2.34	104.52	113.13
2	A	1006	MYR	C4-C3-C2	-2.33	104.58	113.13
2	A	1001	MYR	C4-C3-C2	-2.24	104.88	113.13
2	A	1004	MYR	C4-C3-C2	-2.20	105.05	113.13
2	A	1002	MYR	C4-C3-C2	-2.11	105.36	113.13
3	A	3001	P1Z	O5-C5-C4	2.10	129.92	127.26

There are no chirality outliers.

All (57) torsion outliers are listed below:

Mol	Chain	Res	Type	Atoms
3	A	3001	P1Z	C19-C18-C4-C3
2	A	1005	MYR	C1-C2-C3-C4
3	A	3001	P1Z	C4-C18-C19-C20
2	A	1001	MYR	C2-C3-C4-C5
2	A	1006	MYR	C10-C11-C12-C13
2	A	1009	MYR	C5-C6-C7-C8
2	A	1001	MYR	C9-C10-C11-C12
2	A	1004	MYR	C2-C3-C4-C5
2	A	1001	MYR	C4-C5-C6-C7
2	A	1001	MYR	C1-C2-C3-C4
2	A	1002	MYR	C2-C3-C4-C5
2	A	1005	MYR	C3-C4-C5-C6
2	A	1005	MYR	C2-C3-C4-C5
2	A	1009	MYR	C2-C3-C4-C5
2	A	1004	MYR	C4-C5-C6-C7
2	A	1006	MYR	C5-C6-C7-C8
2	A	1006	MYR	C2-C3-C4-C5
2	A	1003	MYR	C6-C7-C8-C9
2	A	1004	MYR	C11-C10-C9-C8
2	A	1001	MYR	C11-C10-C9-C8
2	A	1003	MYR	C7-C8-C9-C10
2	A	1004	MYR	C1-C2-C3-C4
2	A	1004	MYR	C10-C11-C12-C13
2	A	1006	MYR	C3-C4-C5-C6
2	A	1006	MYR	C11-C10-C9-C8
2	A	1001	MYR	C10-C11-C12-C13
2	A	1003	MYR	C5-C6-C7-C8
2	A	1009	MYR	C1-C2-C3-C4
2	A	1009	MYR	C6-C7-C8-C9
2	A	1003	MYR	C11-C12-C13-C14
2	A	1006	MYR	C4-C5-C6-C7
2	A	1001	MYR	C11-C12-C13-C14
2	A	1003	MYR	C9-C10-C11-C12
2	A	1005	MYR	C6-C7-C8-C9
2	A	1001	MYR	C7-C8-C9-C10
2	A	1004	MYR	C6-C7-C8-C9
2	A	1003	MYR	C1-C2-C3-C4
3	A	3001	P1Z	C18-C19-C20-C21
2	A	1003	MYR	C4-C5-C6-C7
2	A	1003	MYR	C11-C10-C9-C8

Continued on next page...

Continued from previous page...

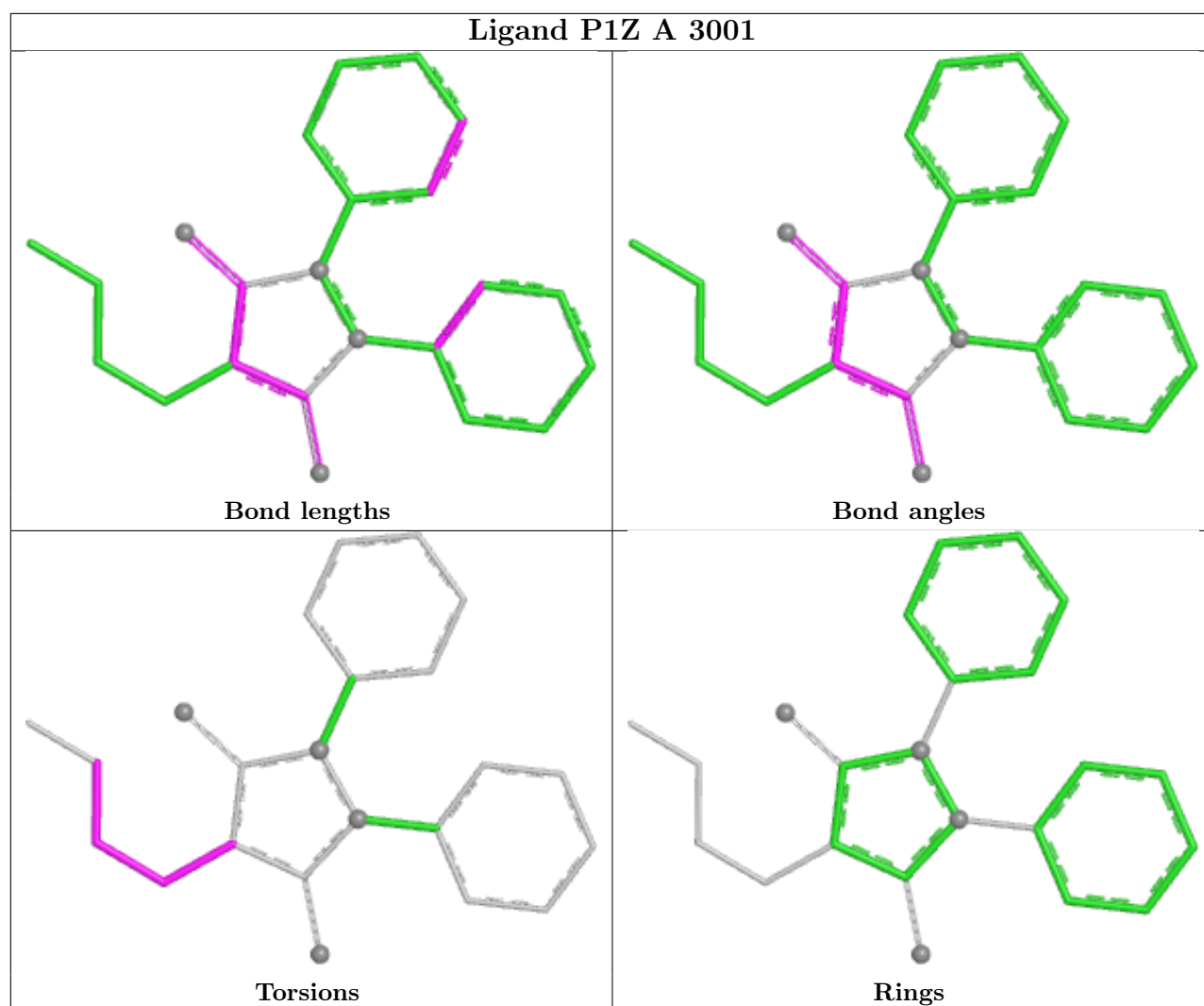
Mol	Chain	Res	Type	Atoms
2	A	1003	MYR	C10-C11-C12-C13
2	A	1004	MYR	O2-C1-C2-C3
2	A	1006	MYR	O1-C1-C2-C3
2	A	1002	MYR	O1-C1-C2-C3
2	A	1004	MYR	O1-C1-C2-C3
2	A	1003	MYR	O1-C1-C2-C3
2	A	1003	MYR	O2-C1-C2-C3
2	A	1004	MYR	C3-C4-C5-C6
2	A	1002	MYR	O2-C1-C2-C3
2	A	1005	MYR	O2-C1-C2-C3
2	A	1006	MYR	O2-C1-C2-C3
2	A	1005	MYR	C4-C5-C6-C7
2	A	1001	MYR	C3-C4-C5-C6
2	A	1005	MYR	O1-C1-C2-C3
2	A	1001	MYR	O1-C1-C2-C3
2	A	1001	MYR	O2-C1-C2-C3
2	A	1003	MYR	C2-C3-C4-C5

There are no ring outliers.

5 monomers are involved in 10 short contacts:

Mol	Chain	Res	Type	Clashes	Symm-Clashes
2	A	1004	MYR	3	0
3	A	3001	P1Z	4	0
2	A	1009	MYR	1	0
2	A	1001	MYR	1	0
2	A	1003	MYR	1	0

The following is a two-dimensional graphical depiction of Mogul quality analysis of bond lengths, bond angles, torsion angles, and ring geometry for all instances of the Ligand of Interest. In addition, ligands with molecular weight > 250 and outliers as shown on the validation Tables will also be included. For torsion angles, if less than 5% of the Mogul distribution of torsion angles is within 10 degrees of the torsion angle in question, then that torsion angle is considered an outlier. Any bond that is central to one or more torsion angles identified as an outlier by Mogul will be highlighted in the graph. For rings, the root-mean-square deviation (RMSD) between the ring in question and similar rings identified by Mogul is calculated over all ring torsion angles. If the average RMSD is greater than 60 degrees and the minimal RMSD between the ring in question and any Mogul-identified rings is also greater than 60 degrees, then that ring is considered an outlier. The outliers are highlighted in purple. The color gray indicates Mogul did not find sufficient equivalents in the CSD to analyse the geometry.



5.7 Other polymers [i](#)

There are no such residues in this entry.

5.8 Polymer linkage issues [i](#)

There are no chain breaks in this entry.

6 Fit of model and data [i](#)

6.1 Protein, DNA and RNA chains [i](#)

In the following table, the column labelled '#RSRZ > 2' contains the number (and percentage) of RSRZ outliers, followed by percent RSRZ outliers for the chain as percentile scores relative to all X-ray entries and entries of similar resolution. The OWAB column contains the minimum, median, 95th percentile and maximum values of the occupancy-weighted average B-factor per residue. The column labelled 'Q < 0.9' lists the number of (and percentage) of residues with an average occupancy less than 0.9.

Mol	Chain	Analysed	<RSRZ>	#RSRZ>2	OWAB(Å ²)	Q<0.9
1	A	581/585 (99%)	0.12	8 (1%) 73 75	28, 48, 79, 104	0

All (8) RSRZ outliers are listed below:

Mol	Chain	Res	Type	RSRZ
1	A	367	HIS	3.0
1	A	481	LEU	2.6
1	A	96	PRO	2.3
1	A	562	ASP	2.3
1	A	399	GLY	2.2
1	A	496	THR	2.1
1	A	364	ALA	2.1
1	A	559	CYS	2.0

6.2 Non-standard residues in protein, DNA, RNA chains [i](#)

There are no non-standard protein/DNA/RNA residues in this entry.

6.3 Carbohydrates [i](#)

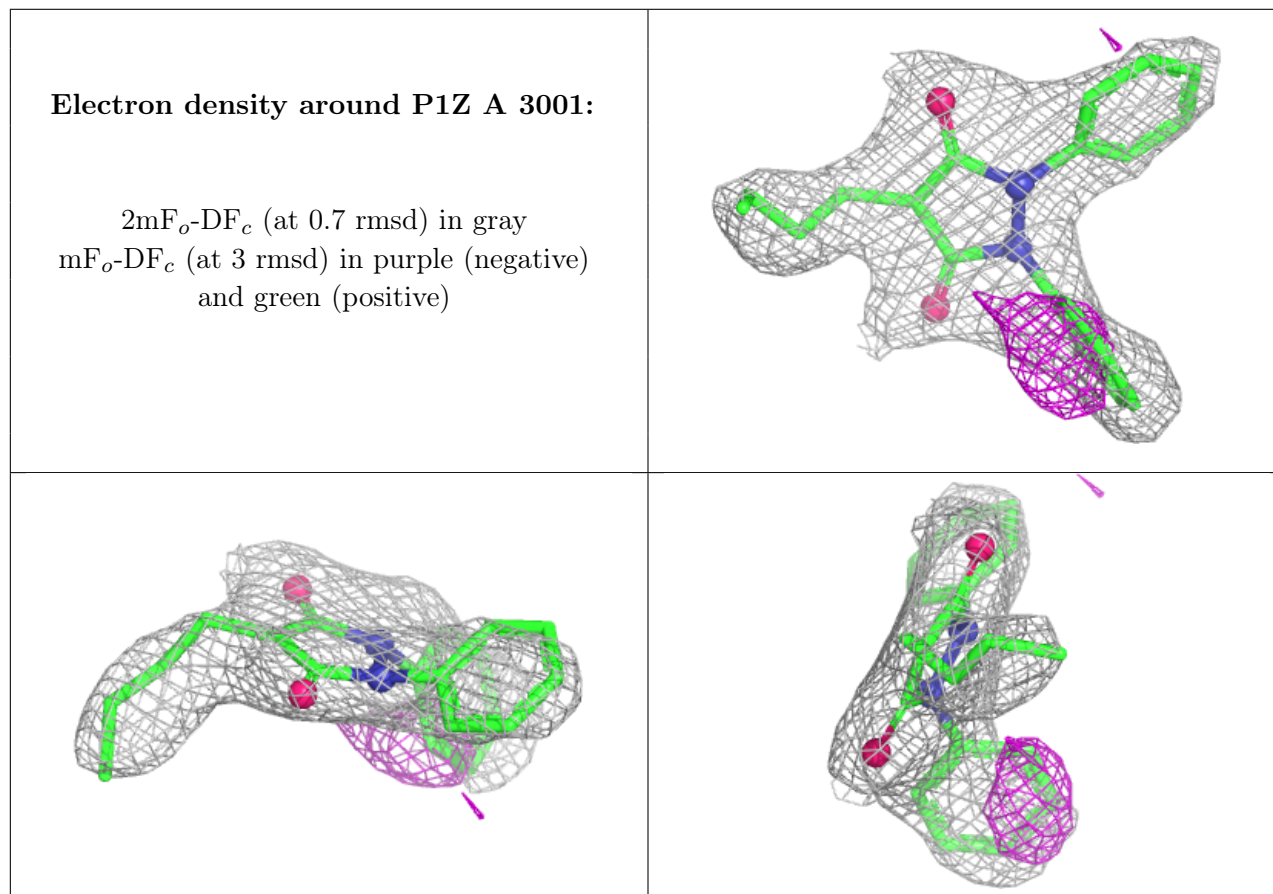
There are no oligosaccharides in this entry.

6.4 Ligands [i](#)

In the following table, the Atoms column lists the number of modelled atoms in the group and the number defined in the chemical component dictionary. The B-factors column lists the minimum, median, 95th percentile and maximum values of B factors of atoms in the group. The column labelled 'Q < 0.9' lists the number of atoms with occupancy less than 0.9.

Mol	Type	Chain	Res	Atoms	RSCC	RSR	B-factors(\AA^2)	Q<0.9
2	MYR	A	1002	12/16	0.86	0.16	52,55,57,57	0
2	MYR	A	1009	9/16	0.89	0.18	80,81,83,83	0
3	P1Z	A	3001	23/23	0.89	0.13	55,58,63,66	0
2	MYR	A	1004	16/16	0.91	0.13	58,64,68,68	0
2	MYR	A	1005	11/16	0.91	0.14	62,64,74,75	0
2	MYR	A	1006	16/16	0.92	0.11	58,63,78,78	0
2	MYR	A	1001	16/16	0.92	0.14	56,63,67,68	0
2	MYR	A	1003	16/16	0.92	0.14	42,53,67,68	0

The following is a graphical depiction of the model fit to experimental electron density of all instances of the Ligand of Interest. In addition, ligands with molecular weight > 250 and outliers as shown on the geometry validation Tables will also be included. Each fit is shown from different orientation to approximate a three-dimensional view.



6.5 Other polymers [i](#)

There are no such residues in this entry.