



Full wwPDB X-ray Structure Validation Report ⓘ

Mar 17, 2026 – 10:32 PM UTC

PDB ID : 2C2E / pdb_00002c2e
Title : Efficient and High Fidelity Incorporation of dCTP Opposite 7,8- Dihydro-8-oxodeoxyguanosine by Sulfolobus solfataricus DNA Polymerase Dpo4
Authors : Irimia, A.; Loukachevitch, L.V.; Egli, M.
Deposited on : 2005-09-27
Resolution : 2.61 Å(reported)

This is a Full wwPDB X-ray Structure Validation Report for a publicly released PDB entry.

We welcome your comments at validation@mail.wwpdb.org

A user guide is available at

<https://www.wwpdb.org/validation/2017/XrayValidationReportHelp>

with specific help available everywhere you see the ⓘ symbol.

The types of validation reports are described at

<http://www.wwpdb.org/validation/2017/FAQs#types>.

The following versions of software and data (see [references ⓘ](#)) were used in the production of this report:

MolProbity : 4-5-2 with Phenix2.0
Mogul : 2022.3.0, CSD as543be (2022)
Xtrriage (Phenix) : 2.0
EDS : 3.0
Buster-report : wwPDB partial adaption of 1.1.7 (2018)
Percentile statistics : 20250101.v01 (using entries in the PDB archive January 1st 2025)
CCP4 : 9.0.010 (Gargrove)
Density-Fitness : 1.0.12
Ideal geometry (proteins) : Engh & Huber (2001)
Ideal geometry (DNA, RNA) : Parkinson et al. (1996)
Validation Pipeline (wwPDB-VP) : 2.49

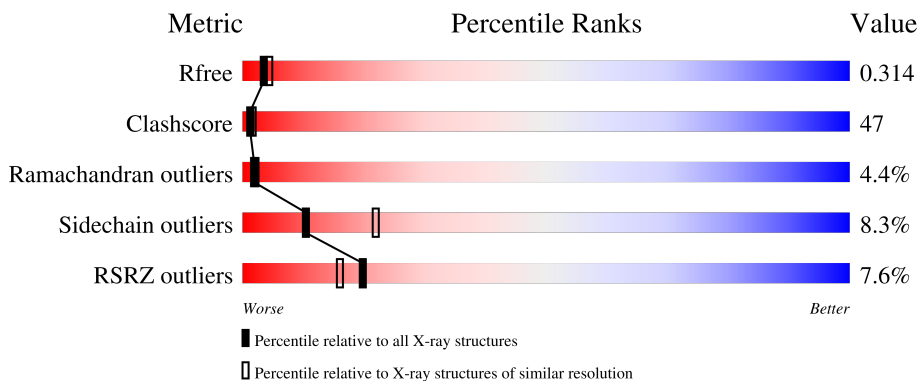
1 Overall quality at a glance

The following experimental techniques were used to determine the structure:

X-RAY DIFFRACTION

The reported resolution of this entry is 2.61 Å.

Percentile scores (ranging between 0-100) for global validation metrics of the entry are shown in the following graphic. The table shows the number of entries on which the scores are based.



Metric	Whole archive (#Entries)	Similar resolution (#Entries, resolution range(Å))
R_{free}	180053	4951 (2.64-2.60)
Clashscore	190562	5303 (2.64-2.60)
Ramachandran outliers	187476	5217 (2.64-2.60)
Sidechain outliers	187428	5217 (2.64-2.60)
RSRZ outliers	180081	4950 (2.64-2.60)

The table below summarises the geometric issues observed across the polymeric chains and their fit to the electron density. The red, orange, yellow and green segments of the lower bar indicate the fraction of residues that contain outliers for ≥ 3 , 2, 1 and 0 types of geometric quality criteria respectively. A grey segment represents the fraction of residues that are not modelled. The numeric value for each fraction is indicated below the corresponding segment, with a dot representing fractions $\leq 5\%$. The upper red bar (where present) indicates the fraction of residues that have poor fit to the electron density. The numeric value is given above the bar.

Mol	Chain	Length	Quality of chain
1	A	358	
2	P	14	
3	T	18	

The following table lists non-polymeric compounds, carbohydrate monomers and non-standard residues in protein, DNA, RNA chains that are outliers for geometric or electron-density-fit criteria:

Mol	Type	Chain	Res	Chirality	Geometry	Clashes	Electron density
4	DCP	A	1342	-	-	X	-

2 Entry composition

There are 6 unique types of molecules in this entry. The entry contains 3475 atoms, of which 0 are hydrogens and 0 are deuteriums.

In the tables below, the ZeroOcc column contains the number of atoms modelled with zero occupancy, the AltConf column contains the number of residues with at least one atom in alternate conformation and the Trace column contains the number of residues modelled with at most 2 atoms.

- Molecule 1 is a protein called DNA POLYMERASE IV.

Mol	Chain	Residues	Atoms					ZeroOcc	AltConf	Trace
			Total	C	N	O	S			
1	A	342	2744	1760	473	504	7	0	0	1

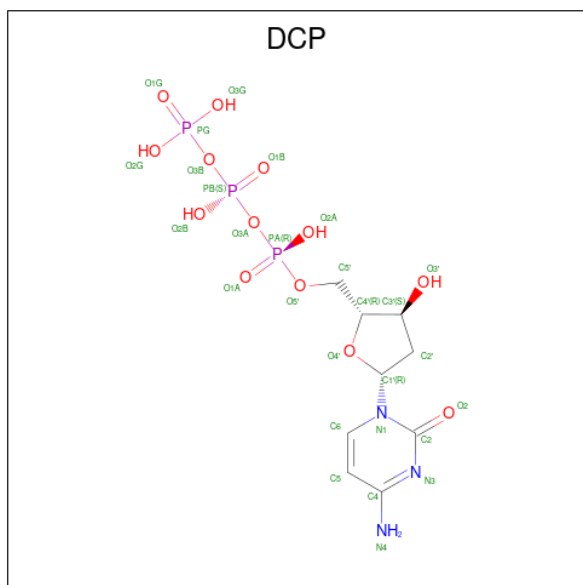
- Molecule 2 is a DNA chain called 5'-D(*GP*GP*GP*GP*GP*AP*AP*GP*GP*AP*TP*TP*CP*C)-3'.

Mol	Chain	Residues	Atoms					ZeroOcc	AltConf	Trace
			Total	C	N	O	P			
2	P	14	292	138	60	81	13	0	0	0

- Molecule 3 is a DNA chain called 5'-D(*TP*CP*AP*C 8OGP*GP*AP*AP*TP*CP*CP *TP*TP*CP*CP*CP*CP*C)-3'.

Mol	Chain	Residues	Atoms					ZeroOcc	AltConf	Trace
			Total	C	N	O	P			
3	T	15	296	142	50	90	14	0	0	0

- Molecule 4 is 2'-DEOXYCYTIDINE-5'-TRIPHOSPHATE (CCD ID: DCP) (formula: C₉H₁₆N₃O₁₃P₃).



Mol	Chain	Residues	Atoms					ZeroOcc	AltConf
4	A	1	Total	C	N	O	P	0	0
			28	9	3	13	3		

- Molecule 5 is CALCIUM ION (CCD ID: CA) (formula: Ca).

Mol	Chain	Residues	Atoms		ZeroOcc	AltConf
5	A	3	Total	Ca	0	0
			3	3		

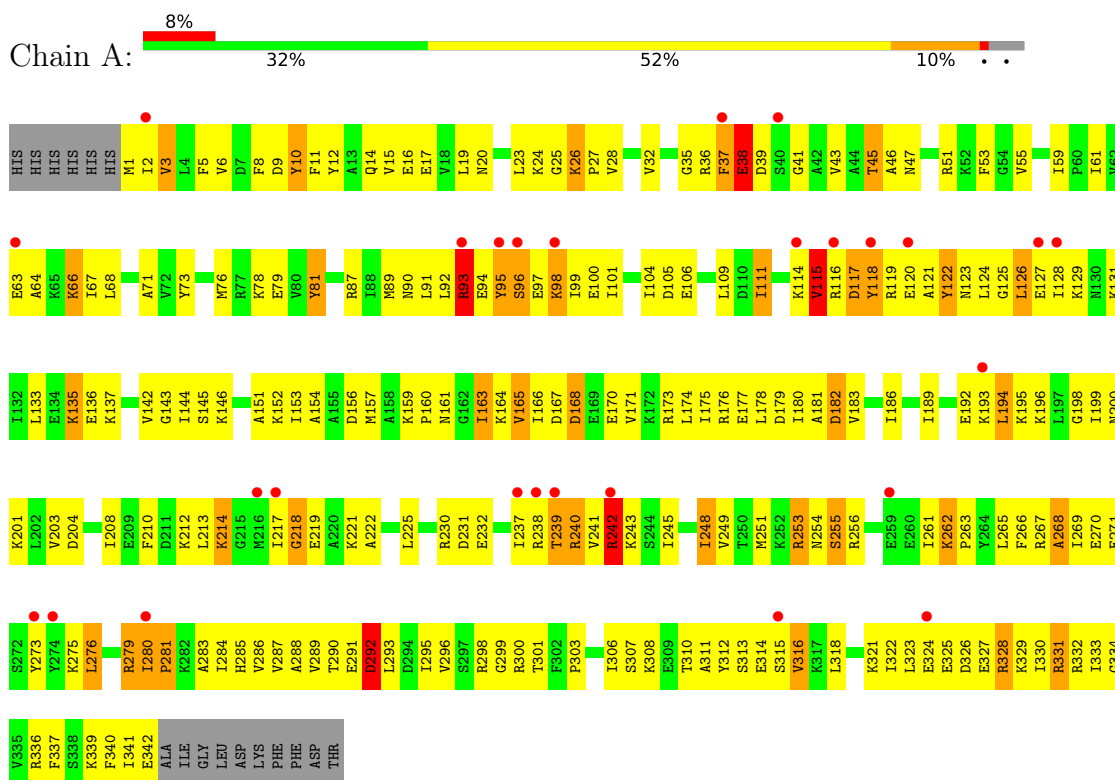
- Molecule 6 is water.

Mol	Chain	Residues	Atoms		ZeroOcc	AltConf
6	A	65	Total	O	0	0
			65	65		
6	P	24	Total	O	0	0
			24	24		
6	T	23	Total	O	0	0
			23	23		

3 Residue-property plots

These plots are drawn for all protein, RNA, DNA and oligosaccharide chains in the entry. The first graphic for a chain summarises the proportions of the various outlier classes displayed in the second graphic. The second graphic shows the sequence view annotated by issues in geometry and electron density. Residues are color-coded according to the number of geometric quality criteria for which they contain at least one outlier: green = 0, yellow = 1, orange = 2 and red = 3 or more. A red dot above a residue indicates a poor fit to the electron density ($RSRZ > 2$). Stretches of 2 or more consecutive residues without any outlier are shown as a green connector. Residues present in the sample, but not in the model, are shown in grey.

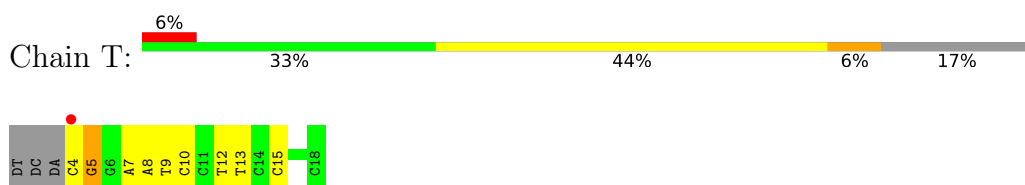
- Molecule 1: DNA POLYMERASE IV



- Molecule 2: 5'-D(*GP*GP*GP*GP*GP*AP*AP*GP*GP*AP *TP*TP*CP*C)-3'



- Molecule 3: 5'-D(*TP*CP*AP*C 8OGP*GP*AP*AP*TP*CP*CP *TP*TP*CP*CP*CP*CP*C)-3'



4 Data and refinement statistics i

Property	Value	Source
Space group	P 21 21 2	Depositor
Cell constants a, b, c, α , β , γ	96.03Å 100.39Å 52.41Å 90.00° 90.00° 90.00°	Depositor
Resolution (Å)	44.49 – 2.61 44.49 – 2.61	Depositor EDS
% Data completeness (in resolution range)	93.1 (44.49-2.61) 93.4 (44.49-2.61)	Depositor EDS
R_{merge}	0.12	Depositor
R_{sym}	(Not available)	Depositor
$\langle I/\sigma(I) \rangle$ ¹	1.87 (at 2.61Å)	Xtrriage
Refinement program	CNS 1.1	Depositor
R, R_{free}	0.267 , 0.315 0.262 , 0.314	Depositor DCC
R_{free} test set	746 reflections (4.98%)	wwPDB-VP
Wilson B-factor (Å ²)	54.7	Xtrriage
Anisotropy	0.421	Xtrriage
Bulk solvent k_{sol} (e/Å ³), B_{sol} (Å ²)	0.33 , 73.9	EDS
L-test for twinning ²	$\langle L \rangle = 0.48$, $\langle L^2 \rangle = 0.31$	Xtrriage
Estimated twinning fraction	0.004 for k,h,-l	Xtrriage
F_o, F_c correlation	0.92	EDS
Total number of atoms	3475	wwPDB-VP
Average B, all atoms (Å ²)	57.0	wwPDB-VP

Xtrriage's analysis on translational NCS is as follows: *The largest off-origin peak in the Patterson function is 4.34% of the height of the origin peak. No significant pseudotranslation is detected.*

¹Intensities estimated from amplitudes.

²Theoretical values of $\langle |L| \rangle$, $\langle L^2 \rangle$ for acentric reflections are 0.5, 0.333 respectively for untwinned datasets, and 0.375, 0.2 for perfectly twinned datasets.

5 Model quality i

5.1 Standard geometry i

Bond lengths and bond angles in the following residue types are not validated in this section: CA, DCP, 8OG

The Z score for a bond length (or angle) is the number of standard deviations the observed value is removed from the expected value. A bond length (or angle) with $|Z| > 5$ is considered an outlier worth inspection. RMSZ is the root-mean-square of all Z scores of the bond lengths (or angles).

Mol	Chain	Bond lengths		Bond angles	
		RMSZ	# $ Z > 5$	RMSZ	# $ Z > 5$
1	A	0.58	2/2783 (0.1%)	1.11	19/3738 (0.5%)
2	P	0.30	0/329	0.60	0/508
3	T	0.36	0/302	0.84	0/459
All	All	0.54	2/3414 (0.1%)	1.04	19/4705 (0.4%)

Chiral center outliers are detected by calculating the chiral volume of a chiral center and verifying if the center is modelled as a planar moiety or with the opposite hand. A planarity outlier is detected by checking planarity of atoms in a peptide group, atoms in a mainchain group or atoms of a sidechain that are expected to be planar.

Mol	Chain	#Chirality outliers	#Planarity outliers
1	A	0	1

All (2) bond length outliers are listed below:

Mol	Chain	Res	Type	Atoms	Z	Observed(Å)	Ideal(Å)
1	A	341	ILE	C-N	-5.48	1.25	1.33
1	A	268	ALA	CA-CB	-5.02	1.45	1.53

All (19) bond angle outliers are listed below:

Mol	Chain	Res	Type	Atoms	Z	Observed(°)	Ideal(°)
1	A	98	LYS	N-CA-C	-10.69	88.04	110.80
1	A	38	GLU	N-CA-C	7.71	127.21	110.80
1	A	214	LYS	N-CA-C	-7.51	102.24	111.33
1	A	25	GLY	N-CA-C	-7.25	105.32	115.32
1	A	126	LEU	N-CA-C	-7.06	103.58	111.28
1	A	255	SER	N-CA-C	7.06	119.10	107.73
1	A	95	TYR	N-CA-C	-6.87	96.17	110.80
1	A	303	PRO	N-CA-C	-6.72	107.69	114.68

Continued on next page...

Continued from previous page...

Mol	Chain	Res	Type	Atoms	Z	Observed(°)	Ideal(°)
1	A	168	ASP	N-CA-C	6.16	123.91	110.80
1	A	292	ASP	N-CA-C	-6.15	106.14	113.21
1	A	91	LEU	N-CA-C	-5.95	104.72	111.14
1	A	240	ARG	N-CA-C	-5.67	99.49	108.73
1	A	280	ILE	CA-C-N	5.66	126.92	119.84
1	A	280	ILE	C-N-CA	5.66	126.92	119.84
1	A	241	VAL	N-CA-C	5.39	117.14	108.85
1	A	232	GLU	N-CA-C	-5.25	105.32	112.26
1	A	3	VAL	N-CA-C	5.22	115.61	107.99
1	A	267	ARG	N-CA-C	-5.03	106.32	112.90
1	A	135	LYS	N-CA-C	5.02	118.89	112.87

There are no chirality outliers.

All (1) planarity outliers are listed below:

Mol	Chain	Res	Type	Group
1	A	242	ARG	Sidechain

5.2 Too-close contacts [i](#)

In the following table, the Non-H and H(model) columns list the number of non-hydrogen atoms and hydrogen atoms in the chain respectively. The H(added) column lists the number of hydrogen atoms added and optimized by MolProbity. The Clashes column lists the number of clashes within the asymmetric unit, whereas Symm-Clashes lists symmetry-related clashes.

Mol	Chain	Non-H	H(model)	H(added)	Clashes	Symm-Clashes
1	A	2744	0	2889	277	0
2	P	292	0	158	15	0
3	T	296	0	170	19	0
4	A	28	0	12	9	0
5	A	3	0	0	0	0
6	A	65	0	0	41	0
6	P	24	0	0	5	0
6	T	23	0	0	7	0
All	All	3475	0	3229	308	0

The all-atom clashscore is defined as the number of clashes found per 1000 atoms (including hydrogen atoms). The all-atom clashscore for this structure is 47.

All (308) close contacts within the same asymmetric unit are listed below, sorted by their clash magnitude.

Atom-1	Atom-2	Interatomic distance (Å)	Clash overlap (Å)
1:A:119:ARG:NH2	6:A:2019:HOH:O	1.74	1.17
1:A:171:VAL:HG21	6:A:2027:HOH:O	1.44	1.15
3:T:12:DT:H2'	6:T:2016:HOH:O	1.53	1.06
1:A:295:ILE:HD11	6:P:2020:HOH:O	1.58	1.01
1:A:167:ASP:HA	6:A:2025:HOH:O	1.59	1.01
1:A:159:LYS:HB2	6:A:2001:HOH:O	1.62	0.98
1:A:334:GLY:HA2	6:A:2042:HOH:O	1.62	0.97
1:A:131:LYS:HE2	1:A:135:LYS:HE2	1.47	0.96
1:A:256:ARG:HH21	1:A:327:GLU:HA	1.30	0.96
1:A:163:ILE:HG13	6:A:2021:HOH:O	1.64	0.96
1:A:144:ILE:HB	1:A:165:VAL:HG22	1.46	0.95
1:A:66:LYS:HE2	1:A:66:LYS:HA	1.50	0.94
1:A:248:ILE:HD11	6:A:2058:HOH:O	1.70	0.92
1:A:5:PHE:HZ	6:A:2017:HOH:O	1.54	0.89
1:A:12:TYR:HB2	1:A:45:THR:HG21	1.56	0.86
1:A:96:SER:HA	1:A:114:LYS:HE3	1.58	0.85
3:T:7:DA:H2''	3:T:8:DA:H5''	1.59	0.84
1:A:38:GLU:HA	1:A:38:GLU:OE1	1.77	0.83
1:A:145:SER:HB2	6:A:2025:HOH:O	1.79	0.82
1:A:26:LYS:HD3	1:A:27:PRO:HD2	1.62	0.81
1:A:273:TYR:CE1	6:A:2051:HOH:O	2.33	0.80
1:A:180:ILE:HG21	1:A:194:LEU:HD22	1.65	0.79
1:A:117:ASP:OD2	1:A:119:ARG:HB3	1.84	0.78
1:A:166:ILE:HG23	1:A:166:ILE:O	1.84	0.78
1:A:254:ASN:OD1	1:A:331:ARG:HG2	1.84	0.77
1:A:12:TYR:HB2	1:A:45:THR:CG2	2.13	0.77
1:A:288:ALA:HB1	1:A:330:ILE:HG23	1.66	0.77
1:A:35:GLY:C	1:A:37:PHE:H	1.95	0.75
1:A:180:ILE:HG12	1:A:194:LEU:CD2	2.17	0.75
1:A:291:GLU:O	1:A:293:LEU:HD12	1.88	0.73
1:A:71:ALA:HB3	1:A:73:TYR:CE1	2.23	0.73
1:A:268:ALA:CB	6:A:2042:HOH:O	2.37	0.73
3:T:4:DC:H5''	3:T:4:DC:O2	1.87	0.73
1:A:287:VAL:O	1:A:333:ILE:HD12	1.88	0.73
1:A:66:LYS:HA	1:A:66:LYS:CE	2.18	0.73
2:P:5:DG:H2''	2:P:6:DA:H8	1.53	0.72
1:A:180:ILE:HG12	1:A:194:LEU:HD22	1.70	0.72
1:A:133:LEU:HD12	1:A:137:LYS:HA	1.70	0.72
1:A:195:LYS:HE3	1:A:200:ASN:OD1	1.91	0.71
1:A:218:GLY:HA3	3:T:12:DT:OP1	1.90	0.71
1:A:268:ALA:HB2	6:A:2042:HOH:O	1.90	0.71
1:A:295:ILE:CD1	6:P:2020:HOH:O	2.25	0.71

Continued on next page...

Continued from previous page...

Atom-1	Atom-2	Interatomic distance (Å)	Clash overlap (Å)
3:T:10:DC:H6	6:T:2015:HOH:O	1.72	0.71
1:A:273:TYR:HE1	6:A:2051:HOH:O	1.69	0.71
1:A:127:GLU:HB3	6:A:2014:HOH:O	1.90	0.70
1:A:328:ARG:H	1:A:328:ARG:HD3	1.55	0.70
2:P:5:DG:H2''	2:P:6:DA:C8	2.27	0.69
3:T:4:DC:H6	6:T:2006:HOH:O	1.75	0.69
1:A:51:ARG:NH1	4:A:1342:DCP:O3G	2.26	0.69
1:A:32:VAL:HG12	1:A:76:MET:HE2	1.74	0.68
3:T:7:DA:H2''	3:T:8:DA:C5'	2.24	0.68
1:A:100:GLU:HA	1:A:239:THR:HA	1.75	0.68
1:A:125:GLY:HA3	6:A:2021:HOH:O	1.94	0.67
1:A:71:ALA:HB3	1:A:73:TYR:HE1	1.58	0.67
1:A:288:ALA:HB1	1:A:330:ILE:CG2	2.23	0.67
1:A:59:ILE:HD11	1:A:64:ALA:HB2	1.76	0.67
1:A:163:ILE:HG23	1:A:163:ILE:O	1.94	0.67
1:A:300:ARG:HD2	1:A:301:THR:H	1.59	0.67
1:A:3:VAL:HG21	1:A:237:ILE:HD11	1.75	0.66
1:A:170:GLU:HG3	1:A:173:ARG:NH2	2.09	0.66
2:P:14:DC:N4	6:T:2013:HOH:O	2.27	0.66
1:A:89:MET:HE2	1:A:89:MET:HA	1.77	0.66
1:A:237:ILE:N	1:A:237:ILE:HD12	2.12	0.65
1:A:93:ARG:NE	1:A:97:GLU:OE1	2.29	0.65
3:T:12:DT:H3'	6:T:2018:HOH:O	1.96	0.65
3:T:7:DA:C2'	3:T:8:DA:H5''	2.26	0.65
1:A:273:TYR:CE2	1:A:308:LYS:HA	2.32	0.65
1:A:300:ARG:HD2	1:A:301:THR:N	2.12	0.65
1:A:28:VAL:HB	1:A:47:ASN:ND2	2.13	0.63
1:A:199:ILE:HG23	1:A:204:ASP:HB2	1.80	0.63
1:A:32:VAL:O	1:A:32:VAL:HG23	1.97	0.63
1:A:291:GLU:C	1:A:293:LEU:H	2.04	0.63
1:A:51:ARG:NH2	4:A:1342:DCP:O3G	2.31	0.63
1:A:178:LEU:HG	1:A:179:ASP:N	2.14	0.63
1:A:43:VAL:HG23	1:A:59:ILE:O	2.00	0.62
1:A:35:GLY:C	1:A:37:PHE:N	2.58	0.62
1:A:133:LEU:O	1:A:137:LYS:HA	2.01	0.61
1:A:276:LEU:HD11	1:A:281:PRO:HG3	1.80	0.61
4:A:1342:DCP:H3'	6:A:2062:HOH:O	1.99	0.61
1:A:332:ARG:NH1	3:T:5:8OG:H2''	2.15	0.61
2:P:4:DG:N7	6:P:2010:HOH:O	2.31	0.61
1:A:92:LEU:O	1:A:94:GLU:N	2.34	0.61
1:A:288:ALA:HB2	1:A:333:ILE:CD1	2.30	0.60

Continued on next page...

Continued from previous page...

Atom-1	Atom-2	Interatomic distance (Å)	Clash overlap (Å)
1:A:115:VAL:HG13	1:A:116:ARG:N	2.16	0.60
1:A:111:ILE:O	1:A:111:ILE:HG13	1.99	0.60
1:A:124:LEU:O	1:A:124:LEU:HG	2.00	0.60
1:A:240:ARG:HG2	1:A:243:LYS:HZ1	1.67	0.60
1:A:214:LYS:HG3	1:A:219:GLU:HB2	1.82	0.60
1:A:273:TYR:CZ	1:A:308:LYS:HA	2.36	0.60
1:A:115:VAL:HG21	1:A:120:GLU:HG3	1.84	0.59
1:A:298:ARG:O	1:A:318:LEU:HD13	2.02	0.59
1:A:153:ILE:O	1:A:157:MET:HG3	2.02	0.58
1:A:159:LYS:CB	6:A:2001:HOH:O	2.35	0.58
1:A:321:LYS:O	1:A:324:GLU:HB3	2.04	0.58
1:A:35:GLY:O	1:A:37:PHE:N	2.28	0.58
1:A:160:PRO:O	1:A:161:ASN:C	2.45	0.58
1:A:240:ARG:NH1	3:T:10:DC:OP1	2.36	0.58
1:A:254:ASN:OD1	1:A:331:ARG:HA	2.04	0.58
1:A:248:ILE:CG1	6:A:2058:HOH:O	2.52	0.57
1:A:126:LEU:HD23	6:A:2021:HOH:O	2.03	0.57
1:A:238:ARG:HG3	1:A:238:ARG:HH11	1.70	0.57
1:A:171:VAL:CG2	6:A:2027:HOH:O	2.23	0.57
1:A:256:ARG:N	6:A:2043:HOH:O	2.38	0.57
2:P:3:DG:H2''	2:P:4:DG:H5'	1.87	0.57
1:A:270:GLU:HG2	1:A:312:TYR:OH	2.05	0.57
1:A:101:ILE:H	1:A:239:THR:HG23	1.69	0.56
1:A:288:ALA:HB2	1:A:333:ILE:HD12	1.86	0.56
1:A:129:LYS:HZ1	1:A:163:ILE:HB	1.71	0.56
1:A:122:TYR:HE2	1:A:126:LEU:HD11	1.71	0.56
1:A:334:GLY:CA	6:A:2042:HOH:O	2.35	0.56
1:A:145:SER:CB	6:A:2025:HOH:O	2.45	0.55
4:A:1342:DCP:PA	6:A:2061:HOH:O	2.63	0.55
1:A:39:ASP:O	1:A:61:ILE:HB	2.07	0.55
1:A:240:ARG:HG2	1:A:243:LYS:NZ	2.22	0.55
1:A:248:ILE:CD1	6:A:2058:HOH:O	2.41	0.55
2:P:4:DG:H1'	2:P:5:DG:H5''	1.89	0.55
1:A:146:LYS:HD2	6:A:2027:HOH:O	2.06	0.54
1:A:118:TYR:O	1:A:119:ARG:C	2.49	0.54
1:A:261:ILE:C	1:A:263:PRO:HD2	2.32	0.54
1:A:273:TYR:HE2	1:A:311:ALA:CB	2.21	0.54
1:A:20:ASN:C	1:A:20:ASN:HD22	2.16	0.54
1:A:306:ILE:HA	6:A:2052:HOH:O	2.06	0.54
4:A:1342:DCP:PB	6:A:2005:HOH:O	2.66	0.54
1:A:253:ARG:HD3	1:A:253:ARG:N	2.23	0.54

Continued on next page...

Continued from previous page...

Atom-1	Atom-2	Interatomic distance (Å)	Clash overlap (Å)
1:A:292:ASP:OD2	1:A:328:ARG:NH1	2.41	0.53
1:A:242:ARG:HD3	1:A:245:ILE:HD11	1.89	0.53
1:A:90:ASN:HA	1:A:93:ARG:HB3	1.90	0.53
1:A:19:LEU:HD12	1:A:19:LEU:N	2.24	0.53
1:A:192:GLU:O	1:A:193:LYS:C	2.52	0.53
1:A:94:GLU:OE1	1:A:94:GLU:HA	2.09	0.53
1:A:129:LYS:NZ	1:A:163:ILE:HB	2.24	0.53
3:T:12:DT:H2''	3:T:13:DT:H71	1.90	0.53
1:A:32:VAL:O	1:A:32:VAL:CG2	2.56	0.53
1:A:193:LYS:O	1:A:196:LYS:HB3	2.09	0.53
1:A:251:MET:HB2	1:A:253:ARG:O	2.08	0.53
1:A:262:LYS:HD2	1:A:266:PHE:CZ	2.44	0.53
1:A:328:ARG:HD3	1:A:328:ARG:N	2.23	0.53
3:T:10:DC:H2'	6:T:2015:HOH:O	2.08	0.53
1:A:122:TYR:C	1:A:122:TYR:CD2	2.87	0.52
1:A:299:GLY:HA2	1:A:318:LEU:HD13	1.91	0.52
1:A:124:LEU:O	1:A:128:ILE:HG13	2.09	0.52
1:A:89:MET:CE	1:A:92:LEU:HD12	2.39	0.52
1:A:154:ALA:HB2	1:A:166:ILE:HG22	1.91	0.52
1:A:79:GLU:H	1:A:79:GLU:CD	2.17	0.52
1:A:312:TYR:O	1:A:316:VAL:HG23	2.10	0.52
1:A:326:ASP:CG	1:A:327:GLU:H	2.18	0.52
1:A:217:ILE:HD11	1:A:222:ALA:HA	1.92	0.52
1:A:2:ILE:O	1:A:111:ILE:HG12	2.10	0.52
1:A:133:LEU:HD12	1:A:133:LEU:O	2.10	0.52
1:A:96:SER:CA	1:A:114:LYS:HE3	2.37	0.51
1:A:170:GLU:HG3	1:A:173:ARG:CZ	2.40	0.51
1:A:125:GLY:CA	6:A:2021:HOH:O	2.56	0.51
1:A:342:GLU:N	6:A:2060:HOH:O	2.43	0.51
1:A:146:LYS:CD	6:A:2027:HOH:O	2.57	0.51
1:A:208:ILE:HD12	6:A:2033:HOH:O	2.10	0.51
1:A:11:PHE:HB3	6:A:2062:HOH:O	2.11	0.51
1:A:143:GLY:HA3	1:A:151:ALA:O	2.10	0.51
1:A:125:GLY:C	6:A:2021:HOH:O	2.54	0.50
1:A:180:ILE:O	1:A:181:ALA:C	2.54	0.50
1:A:99:ILE:HG13	1:A:109:LEU:HG	1.94	0.50
1:A:6:VAL:HG22	1:A:142:VAL:HG22	1.93	0.50
1:A:9:ASP:O	1:A:11:PHE:N	2.45	0.50
1:A:92:LEU:O	1:A:93:ARG:C	2.54	0.50
1:A:36:ARG:O	1:A:36:ARG:HG2	2.11	0.50
2:P:3:DG:H8	2:P:3:DG:OP2	1.93	0.50

Continued on next page...

Continued from previous page...

Atom-1	Atom-2	Interatomic distance (Å)	Clash overlap (Å)
1:A:5:PHE:CD2	1:A:152:LYS:HA	2.47	0.49
1:A:146:LYS:HG2	6:A:2027:HOH:O	2.12	0.49
1:A:271:GLU:O	1:A:275:LYS:HG3	2.13	0.49
1:A:249:VAL:O	1:A:332:ARG:HB3	2.11	0.49
1:A:265:LEU:O	1:A:269:ILE:HG13	2.12	0.49
1:A:182:ASP:HA	6:A:2029:HOH:O	2.11	0.49
1:A:237:ILE:N	1:A:237:ILE:CD1	2.75	0.49
1:A:180:ILE:HG12	1:A:194:LEU:HD21	1.94	0.49
1:A:194:LEU:HD23	1:A:199:ILE:HB	1.94	0.49
1:A:256:ARG:NH1	1:A:323:LEU:HD22	2.28	0.49
1:A:180:ILE:CG2	1:A:181:ALA:N	2.76	0.48
1:A:254:ASN:O	1:A:255:SER:HB2	2.13	0.48
1:A:284:ILE:HD12	1:A:337:PHE:HE1	1.77	0.48
1:A:166:ILE:CD1	1:A:174:LEU:CD1	2.91	0.48
1:A:318:LEU:O	1:A:322:ILE:HG13	2.12	0.48
1:A:126:LEU:N	6:A:2021:HOH:O	2.45	0.48
1:A:9:ASP:O	1:A:10:TYR:C	2.55	0.48
1:A:256:ARG:HH12	1:A:323:LEU:HB3	1.78	0.48
1:A:310:THR:O	1:A:313:SER:HB3	2.14	0.48
1:A:292:ASP:OD1	1:A:328:ARG:HG2	2.14	0.48
1:A:123:ASN:O	1:A:127:GLU:HG3	2.14	0.48
1:A:213:LEU:O	1:A:214:LYS:C	2.55	0.48
1:A:251:MET:HG3	1:A:331:ARG:O	2.14	0.48
1:A:59:ILE:HD11	1:A:64:ALA:CB	2.43	0.48
2:P:4:DG:C2'	2:P:5:DG:H5''	2.44	0.48
1:A:9:ASP:OD1	1:A:160:PRO:HA	2.14	0.47
1:A:41:GLY:N	3:T:5:8OG:OP1	2.47	0.47
1:A:163:ILE:O	1:A:163:ILE:CG2	2.62	0.47
3:T:12:DT:C2'	3:T:13:DT:H71	2.44	0.47
1:A:180:ILE:CG2	1:A:194:LEU:HD22	2.42	0.47
1:A:163:ILE:C	1:A:163:ILE:HD13	2.39	0.47
1:A:285:HIS:CD2	1:A:299:GLY:HA3	2.49	0.47
1:A:118:TYR:HA	1:A:121:ALA:HB3	1.96	0.47
1:A:291:GLU:C	1:A:293:LEU:N	2.72	0.47
1:A:104:ILE:HG12	1:A:104:ILE:O	2.14	0.47
1:A:14:GLN:O	1:A:17:GLU:N	2.45	0.47
1:A:92:LEU:HD21	1:A:128:ILE:HG21	1.96	0.47
1:A:144:ILE:CB	1:A:165:VAL:HG22	2.33	0.47
1:A:166:ILE:HG13	1:A:170:GLU:CD	2.39	0.47
1:A:63:GLU:OE2	1:A:63:GLU:HA	2.14	0.47
1:A:180:ILE:HG23	1:A:181:ALA:N	2.29	0.47

Continued on next page...

Continued from previous page...

Atom-1	Atom-2	Interatomic distance (Å)	Clash overlap (Å)
1:A:92:LEU:C	1:A:94:GLU:N	2.70	0.46
1:A:51:ARG:CZ	4:A:1342:DCP:O3G	2.63	0.46
1:A:12:TYR:CZ	4:A:1342:DCP:O3'	2.67	0.46
1:A:281:PRO:O	1:A:306:ILE:HG13	2.16	0.46
2:P:8:DG:H2''	2:P:9:DG:OP2	2.14	0.46
1:A:314:GLU:HG3	1:A:318:LEU:HG	1.96	0.46
1:A:178:LEU:CG	1:A:179:ASP:N	2.79	0.46
1:A:122:TYR:CE2	1:A:126:LEU:HD21	2.51	0.46
1:A:154:ALA:HA	1:A:157:MET:CE	2.45	0.46
1:A:23:LEU:O	1:A:26:LYS:CB	2.63	0.46
1:A:87:ARG:HD2	1:A:136:GLU:OE2	2.15	0.46
1:A:242:ARG:HD3	1:A:245:ILE:CD1	2.44	0.46
1:A:68:LEU:HB3	1:A:71:ALA:HB2	1.97	0.46
1:A:217:ILE:O	1:A:221:LYS:HB2	2.15	0.46
1:A:51:ARG:HA	1:A:55:VAL:O	2.16	0.46
1:A:67:ILE:O	1:A:68:LEU:HD23	2.16	0.45
1:A:286:VAL:HG21	1:A:315:SER:O	2.16	0.45
1:A:307:SER:O	1:A:310:THR:N	2.49	0.45
1:A:5:PHE:CZ	6:A:2017:HOH:O	2.44	0.45
1:A:45:THR:CB	6:A:2005:HOH:O	2.63	0.45
1:A:106:GLU:OE2	1:A:152:LYS:NZ	2.49	0.45
1:A:251:MET:HE2	1:A:330:ILE:O	2.16	0.45
1:A:293:LEU:HD12	1:A:293:LEU:N	2.32	0.45
1:A:16:GLU:OE1	1:A:16:GLU:HA	2.16	0.45
1:A:19:LEU:N	1:A:19:LEU:CD1	2.79	0.45
1:A:276:LEU:HD11	1:A:281:PRO:CG	2.47	0.45
1:A:23:LEU:O	1:A:26:LYS:HB2	2.16	0.45
2:P:10:DA:O4'	6:P:2016:HOH:O	2.21	0.45
1:A:256:ARG:HB2	6:A:2043:HOH:O	2.17	0.45
3:T:9:DT:H2''	3:T:10:DC:C6	2.52	0.45
1:A:28:VAL:N	1:A:47:ASN:HD21	2.15	0.45
1:A:1:MET:HE2	1:A:237:ILE:HD13	1.99	0.45
1:A:166:ILE:HG13	1:A:170:GLU:CG	2.47	0.45
1:A:28:VAL:H	1:A:47:ASN:ND2	2.15	0.45
1:A:157:MET:HE3	1:A:164:LYS:HD3	1.99	0.45
1:A:26:LYS:HD3	1:A:27:PRO:CD	2.39	0.44
1:A:53:PHE:O	1:A:67:ILE:HG21	2.16	0.44
1:A:307:SER:O	1:A:308:LYS:C	2.60	0.44
1:A:89:MET:HE2	1:A:92:LEU:HD12	1.99	0.44
1:A:289:VAL:HG12	1:A:290:THR:O	2.17	0.44
1:A:28:VAL:CB	1:A:47:ASN:ND2	2.80	0.44

Continued on next page...

Continued from previous page...

Atom-1	Atom-2	Interatomic distance (Å)	Clash overlap (Å)
1:A:78:LYS:HA	1:A:81:TYR:CD2	2.52	0.44
1:A:92:LEU:HD21	1:A:128:ILE:CG2	2.48	0.44
1:A:166:ILE:O	1:A:166:ILE:CG2	2.55	0.44
1:A:296:VAL:O	1:A:296:VAL:HG13	2.17	0.44
2:P:12:DT:OP1	6:P:2021:HOH:O	2.21	0.44
1:A:8:PHE:HZ	1:A:89:MET:HE3	1.83	0.44
1:A:261:ILE:O	1:A:262:LYS:C	2.61	0.44
1:A:331:ARG:NH1	1:A:331:ARG:HG3	2.31	0.44
2:P:13:DC:H4'	2:P:14:DC:H5''	1.99	0.44
1:A:20:ASN:C	1:A:20:ASN:ND2	2.74	0.44
1:A:115:VAL:HG21	1:A:120:GLU:CG	2.48	0.44
1:A:255:SER:OG	1:A:256:ARG:N	2.49	0.44
1:A:166:ILE:HG13	1:A:170:GLU:HB3	2.00	0.44
1:A:8:PHE:N	1:A:8:PHE:CD1	2.82	0.43
1:A:262:LYS:HE2	1:A:316:VAL:HG13	1.99	0.43
1:A:180:ILE:HD11	1:A:225:LEU:HD22	2.00	0.43
1:A:114:LYS:O	1:A:115:VAL:HG23	2.18	0.43
1:A:230:ARG:O	1:A:231:ASP:C	2.59	0.43
1:A:331:ARG:HH11	1:A:331:ARG:CG	2.32	0.43
1:A:95:TYR:O	1:A:96:SER:HB2	2.18	0.43
2:P:4:DG:C6	2:P:5:DG:C6	3.07	0.43
1:A:96:SER:O	1:A:98:LYS:N	2.48	0.43
1:A:321:LYS:NZ	1:A:325:GLU:OE1	2.49	0.43
1:A:97:GLU:O	1:A:97:GLU:CG	2.67	0.42
1:A:14:GLN:O	1:A:15:VAL:C	2.62	0.42
1:A:203:VAL:CG1	1:A:204:ASP:N	2.83	0.42
1:A:41:GLY:HA2	3:T:5:8OG:H4'	2.02	0.42
1:A:59:ILE:CD1	1:A:64:ALA:HB2	2.45	0.42
1:A:276:LEU:HD22	1:A:279:ARG:O	2.19	0.42
1:A:170:GLU:CG	1:A:173:ARG:NH2	2.81	0.42
1:A:280:ILE:O	1:A:340:PHE:HA	2.19	0.42
1:A:284:ILE:HD12	1:A:337:PHE:CE1	2.53	0.42
1:A:12:TYR:CE1	4:A:1342:DCP:O3'	2.72	0.42
1:A:166:ILE:CD1	1:A:174:LEU:HD11	2.49	0.42
1:A:245:ILE:HD13	1:A:245:ILE:HA	1.90	0.42
1:A:135:LYS:C	1:A:136:GLU:HG2	2.45	0.42
1:A:166:ILE:HD11	1:A:174:LEU:CD1	2.50	0.42
1:A:177:GLU:HA	1:A:201:LYS:HD3	2.00	0.42
1:A:336:ARG:NH2	3:T:7:DA:C2'	2.83	0.41
1:A:175:ILE:O	1:A:203:VAL:HB	2.20	0.41
1:A:45:THR:OG1	1:A:46:ALA:N	2.52	0.41

Continued on next page...

Continued from previous page...

Atom-1	Atom-2	Interatomic distance (Å)	Clash overlap (Å)
1:A:79:GLU:OE1	1:A:79:GLU:N	2.31	0.41
1:A:81:TYR:CD1	1:A:81:TYR:N	2.87	0.41
1:A:198:GLY:O	6:A:2034:HOH:O	2.22	0.41
1:A:326:ASP:OD2	1:A:327:GLU:N	2.48	0.41
3:T:15:DC:OP2	6:T:2020:HOH:O	2.22	0.41
1:A:283:ALA:HB2	1:A:339:LYS:HG3	2.01	0.41
2:P:3:DG:C2'	2:P:4:DG:H5'	2.49	0.41
2:P:4:DG:H2''	2:P:5:DG:H5''	2.02	0.41
1:A:28:VAL:H	1:A:47:ASN:HD21	1.69	0.41
1:A:12:TYR:CE2	4:A:1342:DCP:O3'	2.73	0.41
1:A:326:ASP:C	1:A:327:GLU:HG3	2.45	0.41
1:A:17:GLU:OE1	1:A:24:LYS:HD3	2.20	0.41
1:A:115:VAL:CG1	1:A:116:ARG:N	2.77	0.41
1:A:99:ILE:O	1:A:239:THR:OG1	2.20	0.41
1:A:183:VAL:HB	1:A:186:ILE:HG13	2.02	0.40
1:A:116:ARG:O	1:A:117:ASP:HB3	2.21	0.40
1:A:326:ASP:CG	1:A:327:GLU:N	2.80	0.40
1:A:189:ILE:O	1:A:189:ILE:HG22	2.20	0.40
1:A:105:ASP:O	1:A:105:ASP:CG	2.64	0.40
1:A:291:GLU:O	1:A:291:GLU:HG2	2.22	0.40

There are no symmetry-related clashes.

5.3 Torsion angles [i](#)

5.3.1 Protein backbone [i](#)

In the following table, the Percentiles column shows the percent Ramachandran outliers of the chain as a percentile score with respect to all X-ray entries followed by that with respect to entries of similar resolution.

The Analysed column shows the number of residues for which the backbone conformation was analysed, and the total number of residues.

Mol	Chain	Analysed	Favoured	Allowed	Outliers	Percentiles
1	A	340/358 (95%)	279 (82%)	46 (14%)	15 (4%)	2 2

All (15) Ramachandran outliers are listed below:

Mol	Chain	Res	Type
1	A	10	TYR

Continued on next page...

Continued from previous page...

Mol	Chain	Res	Type
1	A	38	GLU
1	A	96	SER
1	A	168	ASP
1	A	242	ARG
1	A	328	ARG
1	A	37	PHE
1	A	93	ARG
1	A	115	VAL
1	A	182	ASP
1	A	117	ASP
1	A	210	PHE
1	A	262	LYS
1	A	218	GLY
1	A	111	ILE

5.3.2 Protein sidechains [i](#)

In the following table, the Percentiles column shows the percent sidechain outliers of the chain as a percentile score with respect to all X-ray entries followed by that with respect to entries of similar resolution.

The Analysed column shows the number of residues for which the sidechain conformation was analysed, and the total number of residues.

Mol	Chain	Analysed	Rotameric	Outliers	Percentiles
1	A	300/315 (95%)	275 (92%)	25 (8%)	10 22

All (25) residues with a non-rotameric sidechain are listed below:

Mol	Chain	Res	Type
1	A	26	LYS
1	A	38	GLU
1	A	45	THR
1	A	66	LYS
1	A	81	TYR
1	A	93	ARG
1	A	115	VAL
1	A	118	TYR
1	A	122	TYR
1	A	156	ASP
1	A	163	ILE
1	A	165	VAL

Continued on next page...

Continued from previous page...

Mol	Chain	Res	Type
1	A	176	ARG
1	A	194	LEU
1	A	212	LYS
1	A	239	THR
1	A	248	ILE
1	A	253	ARG
1	A	276	LEU
1	A	279	ARG
1	A	281	PRO
1	A	292	ASP
1	A	316	VAL
1	A	329	LYS
1	A	331	ARG

Sometimes sidechains can be flipped to improve hydrogen bonding and reduce clashes. All (3) such sidechains are listed below:

Mol	Chain	Res	Type
1	A	20	ASN
1	A	123	ASN
1	A	257	ASN

5.3.3 RNA [i](#)

There are no RNA molecules in this entry.

5.4 Non-standard residues in protein, DNA, RNA chains [i](#)

1 non-standard protein/DNA/RNA residue is modelled in this entry.

In the following table, the Counts columns list the number of bonds (or angles) for which Mogul statistics could be retrieved, the number of bonds (or angles) that are observed in the model and the number of bonds (or angles) that are defined in the Chemical Component Dictionary. The Link column lists molecule types, if any, to which the group is linked. The Z score for a bond length (or angle) is the number of standard deviations the observed value is removed from the expected value. A bond length (or angle) with $|Z| > 2$ is considered an outlier worth inspection. RMSZ is the root-mean-square of all Z scores of the bond lengths (or angles).

Mol	Type	Chain	Res	Link	Bond lengths			Bond angles		
					Counts	RMSZ	$\# Z > 2$	Counts	RMSZ	$\# Z > 2$
3	8OG	T	5	3	22,25,26	1.49	4 (18%)	26,37,40	2.11	7 (26%)

In the following table, the Chirals column lists the number of chiral outliers, the number of chiral centers analysed, the number of these observed in the model and the number defined in the Chemical Component Dictionary. Similar counts are reported in the Torsion and Rings columns. '-' means no outliers of that kind were identified.

Mol	Type	Chain	Res	Link	Chirals	Torsions	Rings
3	8OG	T	5	3	-	2/7/21/22	0/3/3/3

All (4) bond length outliers are listed below:

Mol	Chain	Res	Type	Atoms	Z	Observed(Å)	Ideal(Å)
3	T	5	8OG	C8-N9	-4.01	1.33	1.40
3	T	5	8OG	C4-N9	-3.00	1.33	1.39
3	T	5	8OG	C5-N7	-2.69	1.33	1.37
3	T	5	8OG	C8-N7	-2.67	1.33	1.38

All (7) bond angle outliers are listed below:

Mol	Chain	Res	Type	Atoms	Z	Observed(°)	Ideal(°)
3	T	5	8OG	C2-N3-C4	5.44	121.68	112.30
3	T	5	8OG	N9-C4-N3	4.58	131.85	126.13
3	T	5	8OG	N7-C8-N9	4.07	111.14	106.61
3	T	5	8OG	C2-N1-C6	-3.07	119.55	125.11
3	T	5	8OG	O6-C6-C5	-2.98	120.08	127.26
3	T	5	8OG	C5-C6-N1	2.45	118.86	112.13
3	T	5	8OG	C5-N7-C8	-2.15	106.51	109.47

There are no chirality outliers.

All (2) torsion outliers are listed below:

Mol	Chain	Res	Type	Atoms
3	T	5	8OG	C2'-C1'-N9-C8
3	T	5	8OG	O4'-C4'-C5'-O5'

There are no ring outliers.

1 monomer is involved in 3 short contacts:

Mol	Chain	Res	Type	Clashes	Symm-Clashes
3	T	5	8OG	3	0

5.5 Carbohydrates [i](#)

There are no oligosaccharides in this entry.

5.6 Ligand geometry [i](#)

Of 4 ligands modelled in this entry, 3 are monoatomic - leaving 1 for Mogul analysis.

In the following table, the Counts columns list the number of bonds (or angles) for which Mogul statistics could be retrieved, the number of bonds (or angles) that are observed in the model and the number of bonds (or angles) that are defined in the Chemical Component Dictionary. The Link column lists molecule types, if any, to which the group is linked. The Z score for a bond length (or angle) is the number of standard deviations the observed value is removed from the expected value. A bond length (or angle) with $|Z| > 2$ is considered an outlier worth inspection. RMSZ is the root-mean-square of all Z scores of the bond lengths (or angles).

Mol	Type	Chain	Res	Link	Bond lengths			Bond angles		
					Counts	RMSZ	# Z > 2	Counts	RMSZ	# Z > 2
4	DCP	A	1342	5	28,29,29	1.40	3 (10%)	41,45,45	1.15	3 (7%)

In the following table, the Chirals column lists the number of chiral outliers, the number of chiral centers analysed, the number of these observed in the model and the number defined in the Chemical Component Dictionary. Similar counts are reported in the Torsion and Rings columns. '-' means no outliers of that kind were identified.

Mol	Type	Chain	Res	Link	Chirals	Torsions	Rings
4	DCP	A	1342	5	-	1/22/34/34	0/2/2/2

All (3) bond length outliers are listed below:

Mol	Chain	Res	Type	Atoms	Z	Observed(Å)	Ideal(Å)
4	A	1342	DCP	PG-O1G	3.49	1.61	1.50
4	A	1342	DCP	C4-N3	3.05	1.40	1.34
4	A	1342	DCP	C2-N3	2.18	1.40	1.36

All (3) bond angle outliers are listed below:

Mol	Chain	Res	Type	Atoms	Z	Observed(°)	Ideal(°)
4	A	1342	DCP	O4'-C1'-C2'	-3.06	100.52	106.25
4	A	1342	DCP	O3G-PG-O3B	2.68	113.62	104.64
4	A	1342	DCP	O4'-C1'-N1	2.62	112.51	107.86

There are no chirality outliers.

All (1) torsion outliers are listed below:

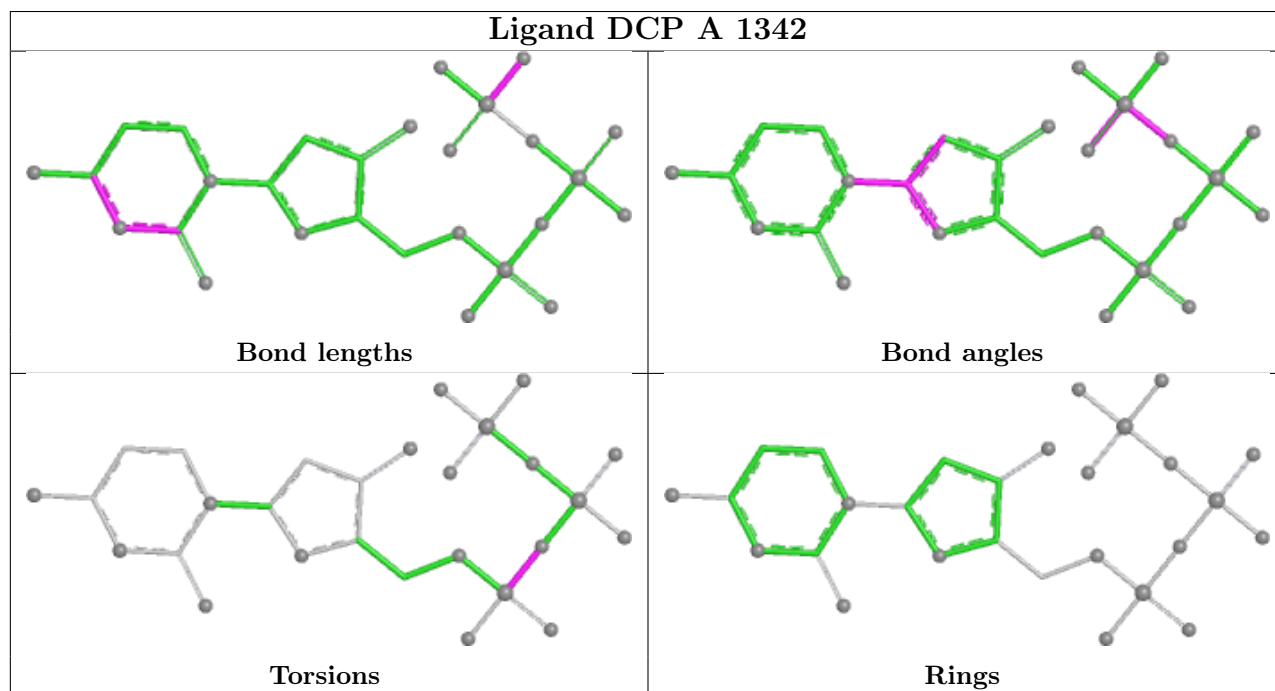
Mol	Chain	Res	Type	Atoms
4	A	1342	DCP	PB-O3A-PA-O5'

There are no ring outliers.

1 monomer is involved in 9 short contacts:

Mol	Chain	Res	Type	Clashes	Symm-Clashes
4	A	1342	DCP	9	0

The following is a two-dimensional graphical depiction of Mogul quality analysis of bond lengths, bond angles, torsion angles, and ring geometry for all instances of the Ligand of Interest. In addition, ligands with molecular weight > 250 and outliers as shown on the validation Tables will also be included. For torsion angles, if less than 5% of the Mogul distribution of torsion angles is within 10 degrees of the torsion angle in question, then that torsion angle is considered an outlier. Any bond that is central to one or more torsion angles identified as an outlier by Mogul will be highlighted in the graph. For rings, the root-mean-square deviation (RMSD) between the ring in question and similar rings identified by Mogul is calculated over all ring torsion angles. If the average RMSD is greater than 60 degrees and the minimal RMSD between the ring in question and any Mogul-identified rings is also greater than 60 degrees, then that ring is considered an outlier. The outliers are highlighted in purple. The color gray indicates Mogul did not find sufficient equivalents in the CSD to analyse the geometry.



5.7 Other polymers [i](#)

There are no such residues in this entry.

5.8 Polymer linkage issues [i](#)

There are no chain breaks in this entry.

6 Fit of model and data

6.1 Protein, DNA and RNA chains

In the following table, the column labelled ‘#RSRZ > 2’ contains the number (and percentage) of RSRZ outliers, followed by percent RSRZ outliers for the chain as percentile scores relative to all X-ray entries and entries of similar resolution. The OWAB column contains the minimum, median, 95th percentile and maximum values of the occupancy-weighted average B-factor per residue. The column labelled ‘Q < 0.9’ lists the number of (and percentage) of residues with an average occupancy less than 0.9.

Mol	Chain	Analysed	<RSRZ>	#RSRZ>2	OWAB(Å ²)	Q<0.9
1	A	342/358 (95%)	0.69	27 (7%) 18 15	30, 54, 76, 83	32 (9%)
2	P	14/14 (100%)	0.11	0 100 100	43, 57, 71, 74	0
3	T	14/18 (77%)	0.19	1 (7%) 22 18	37, 57, 71, 95	0
All	All	370/390 (94%)	0.65	28 (7%) 20 16	30, 54, 76, 95	32 (8%)

All (28) RSRZ outliers are listed below:

Mol	Chain	Res	Type	RSRZ
1	A	259	GLU	7.3
1	A	95	TYR	5.4
1	A	324	GLU	4.6
1	A	237	ILE	4.3
1	A	96	SER	3.9
1	A	118	TYR	3.4
1	A	98	LYS	3.3
1	A	217	ILE	3.1
1	A	274	TYR	3.0
1	A	93	ARG	3.0
1	A	37	PHE	2.9
1	A	2	ILE	2.8
1	A	120	GLU	2.6
1	A	315	SER	2.5
1	A	238	ARG	2.4
1	A	128	ILE	2.4
1	A	63	GLU	2.3
1	A	242	ARG	2.3
1	A	239	THR	2.3
1	A	273	TYR	2.2
1	A	193	LYS	2.2
1	A	216	MET	2.1
1	A	40	SER	2.1

Continued on next page...

Continued from previous page...

Mol	Chain	Res	Type	RSRZ
1	A	127	GLU	2.1
3	T	4	DC	2.1
1	A	116	ARG	2.0
1	A	114	LYS	2.0
1	A	280	ILE	2.0

6.2 Non-standard residues in protein, DNA, RNA chains [i](#)

In the following table, the Atoms column lists the number of modelled atoms in the group and the number defined in the chemical component dictionary. The B-factors column lists the minimum, median, 95th percentile and maximum values of B factors of atoms in the group. The column labelled 'Q< 0.9' lists the number of atoms with occupancy less than 0.9.

Mol	Type	Chain	Res	Atoms	RSCC	RSR	B-factors(Å ²)	Q<0.9
3	8OG	T	5	23/24	0.89	0.11	30,44,71,71	0

6.3 Carbohydrates [i](#)

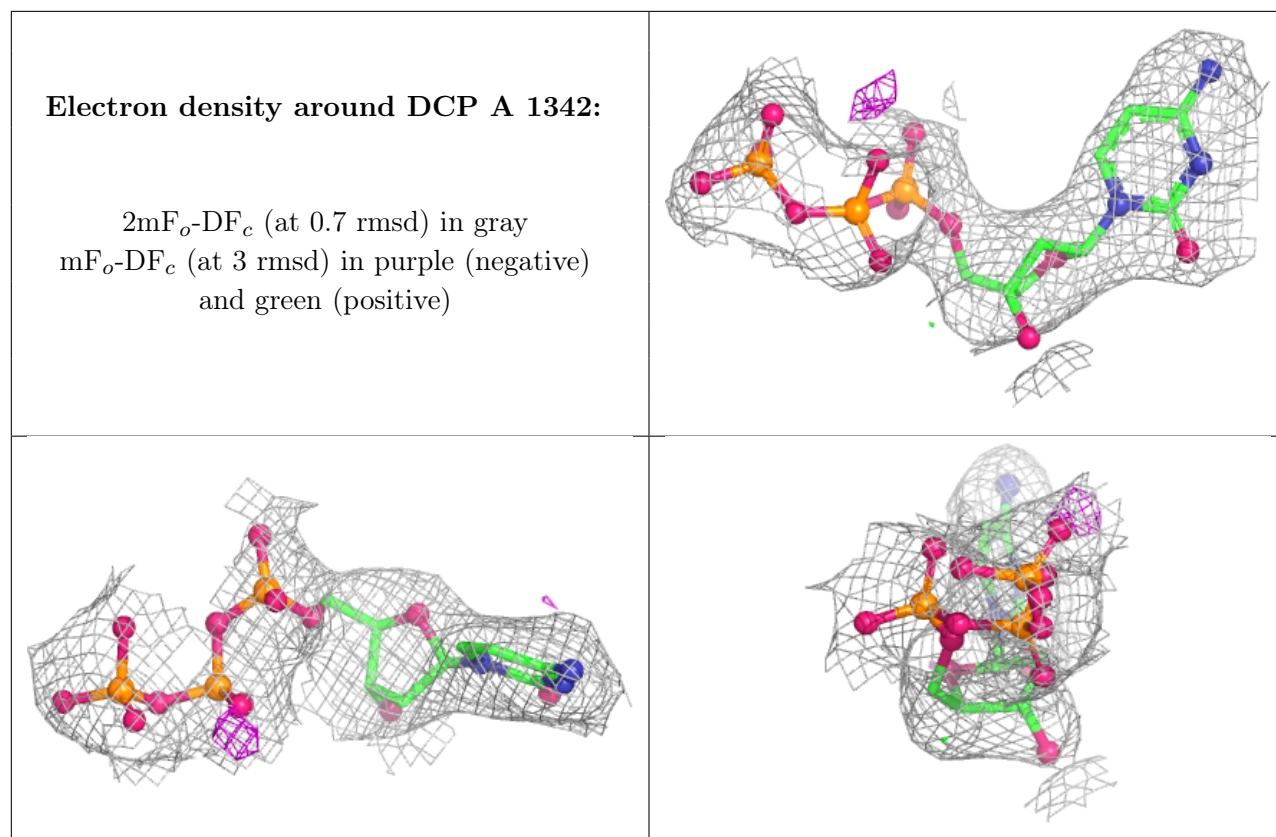
There are no oligosaccharides in this entry.

6.4 Ligands [i](#)

In the following table, the Atoms column lists the number of modelled atoms in the group and the number defined in the chemical component dictionary. The B-factors column lists the minimum, median, 95th percentile and maximum values of B factors of atoms in the group. The column labelled 'Q< 0.9' lists the number of atoms with occupancy less than 0.9.

Mol	Type	Chain	Res	Atoms	RSCC	RSR	B-factors(Å ²)	Q<0.9
4	DCP	A	1342	28/28	0.92	0.10	39,55,63,65	0
5	CA	A	1343	1/1	0.97	0.06	51,51,51,51	0
5	CA	A	1345	1/1	0.97	0.04	62,62,62,62	0
5	CA	A	1344	1/1	0.98	0.10	41,41,41,41	0

The following is a graphical depiction of the model fit to experimental electron density of all instances of the Ligand of Interest. In addition, ligands with molecular weight > 250 and outliers as shown on the geometry validation Tables will also be included. Each fit is shown from different orientation to approximate a three-dimensional view.



6.5 Other polymers [i](#)

There are no such residues in this entry.