



wwPDB X-ray Structure Validation Summary Report ⓘ

Mar 5, 2026 – 05:03 PM UTC

PDB ID : 1C4D / pdb_00001c4d
Title : GRAMICIDIN CSCL COMPLEX
Authors : Wallace, B.A.
Deposited on : 1999-06-04
Resolution : 2.00 Å(reported)

This is a wwPDB X-ray Structure Validation Summary Report for a publicly released PDB entry.

We welcome your comments at validation@mail.wwpdb.org

A user guide is available at

<https://www.wwpdb.org/validation/2017/XrayValidationReportHelp>

with specific help available everywhere you see the ⓘ symbol.

The types of validation reports are described at

<http://www.wwpdb.org/validation/2017/FAQs#types>.

The following versions of software and data (see [references ⓘ](#)) were used in the production of this report:

MolProbity : 4-5-2 with Phenix2.0
Mogul : 2022.3.0, CSD as543be (2022)
Xtrriage (Phenix) : **NOT EXECUTED**
EDS : **NOT EXECUTED**
Percentile statistics : 20250101.v01 (using entries in the PDB archive January 1st 2025)
Ideal geometry (proteins) : Engh & Huber (2001)
Ideal geometry (DNA, RNA) : Parkinson et al. (1996)
Validation Pipeline (wwPDB-VP) : 2.49

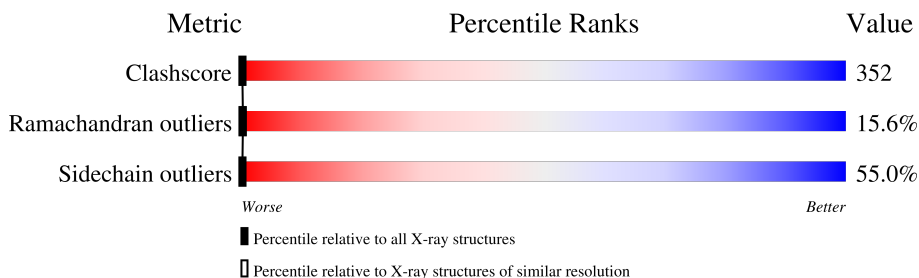
1 Overall quality at a glance

The following experimental techniques were used to determine the structure:

X-RAY DIFFRACTION

The reported resolution of this entry is 2.00 Å.

Percentile scores (ranging between 0-100) for global validation metrics of the entry are shown in the following graphic. The table shows the number of entries on which the scores are based.



Metric	Whole archive (#Entries)	Similar resolution (#Entries, resolution range(Å))
Clashscore	190562	11152 (2.00-2.00)
Ramachandran outliers	187476	11031 (2.00-2.00)
Sidechain outliers	187428	11029 (2.00-2.00)

The table below summarises the geometric issues observed across the polymeric chains and their fit to the electron density. The red, orange, yellow and green segments of the lower bar indicate the fraction of residues that contain outliers for ≥ 3 , 2, 1 and 0 types of geometric quality criteria respectively. A grey segment represents the fraction of residues that are not modelled. The numeric value for each fraction is indicated below the corresponding segment, with a dot representing fractions $\leq 5\%$

Note EDS was not executed.

Mol	Chain	Length	Quality of chain
1	A	16	69% (yellow), 31% (orange)
1	B	16	62% (yellow), 25% (orange), 12% (red)
1	C	16	62% (yellow), 38% (orange)
1	D	16	50% (yellow), 38% (orange), 12% (red)

The following table lists non-polymeric compounds, carbohydrate monomers and non-standard residues in protein, DNA, RNA chains that are outliers for geometric or electron-density-fit criteria:

Mol	Type	Chain	Res	Chirality	Geometry	Clashes	Electron density
1	FVA	A	1	-	-	X	-
1	DLE	A	10	-	-	X	-
1	DLE	A	14	-	-	X	-
1	ETA	A	16	-	-	X	-
1	DLE	A	4	-	-	X	-
1	DVA	A	6	X	-	X	-
1	DVA	A	8	-	-	X	-
1	FVA	B	1	-	X	X	-
1	DLE	B	10	-	-	X	-
1	DLE	B	12	-	-	X	-
1	DLE	B	14	-	-	X	-
1	ETA	B	16	-	-	X	-
1	DLE	B	4	-	-	X	-
1	DVA	B	6	-	-	X	-
1	DVA	B	8	-	-	X	-
1	FVA	C	1	-	X	-	-
1	DLE	C	10	-	-	X	-
1	DLE	C	14	-	-	X	-
1	ETA	C	16	-	-	X	-
1	DLE	C	4	-	-	X	-
1	DVA	C	6	-	-	X	-
1	DVA	C	8	X	-	X	-
1	FVA	D	1	-	X	X	-
1	DLE	D	10	-	-	X	-
1	DLE	D	12	-	-	X	-
1	DLE	D	14	-	-	X	-
1	ETA	D	16	-	-	X	-
1	DLE	D	4	-	-	X	-
1	DVA	D	6	-	-	X	-
1	DVA	D	8	X	-	X	-
3	CL	A	119	-	-	X	-
3	CL	C	118	-	-	X	-
3	CL	D	119	-	-	X	-
4	MOH	A	133	-	-	X	-
4	MOH	D	131	-	-	X	-
4	MOH	D	132	-	-	X	-

2 Entry composition [i](#)

There are 5 unique types of molecules in this entry. The entry contains 604 atoms, of which 0 are hydrogens and 0 are deuteriums.

In the tables below, the ZeroOcc column contains the number of atoms modelled with zero occupancy, the AltConf column contains the number of residues with at least one atom in alternate conformation and the Trace column contains the number of residues modelled with at most 2 atoms.

- Molecule 1 is a protein called GRAMICIDIN A.

Mol	Chain	Residues	Atoms				ZeroOcc	AltConf	Trace
			Total	C	N	O			
1	A	16	136	99	20	17	0	0	0
1	B	16	136	99	20	17	0	0	0
1	C	16	136	99	20	17	0	0	0
1	D	16	136	99	20	17	0	0	0

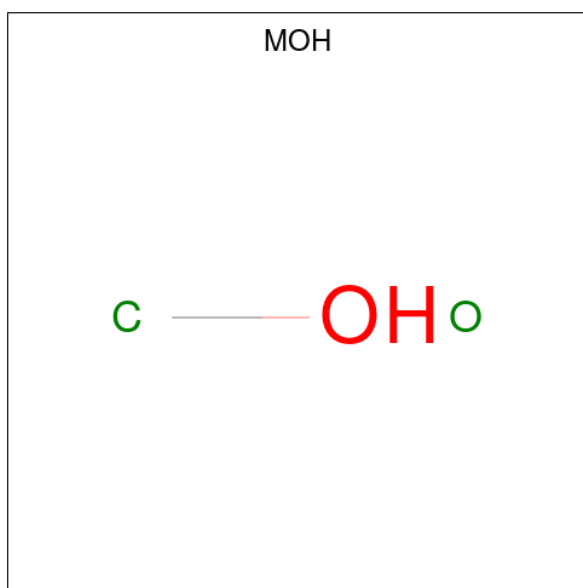
- Molecule 2 is CESIUM ION (CCD ID: CS) (formula: Cs).

Mol	Chain	Residues	Atoms		ZeroOcc	AltConf
2	A	3	Total	Cs	0	0
			3	3		
2	B	1	Total	Cs	0	0
			1	1		
2	C	1	Total	Cs	0	0
			1	1		
2	D	3	Total	Cs	0	0
			3	3		

- Molecule 3 is CHLORIDE ION (CCD ID: CL) (formula: Cl).

Mol	Chain	Residues	Atoms		ZeroOcc	AltConf
3	A	2	Total	Cl	0	0
			2	2		
3	B	1	Total	Cl	0	0
			1	1		
3	C	2	Total	Cl	0	0
			2	2		
3	D	1	Total	Cl	0	0
			1	1		

- Molecule 4 is METHANOL (CCD ID: MOH) (formula: CH₄O).



Mol	Chain	Residues	Atoms	ZeroOcc	AltConf
4	A	1	Total C O 2 1 1	0	0
4	A	1	Total C O 2 1 1	0	0
4	A	1	Total C O 2 1 1	0	0
4	A	1	Total C O 2 1 1	0	0
4	B	1	Total C O 2 1 1	0	0
4	B	1	Total C O 2 1 1	0	0
4	B	1	Total C O 2 1 1	0	0
4	C	1	Total C O 2 1 1	0	0
4	C	1	Total C O 2 1 1	0	0
4	D	1	Total C O 2 1 1	0	0
4	D	1	Total C O 2 1 1	0	0
4	D	1	Total C O 2 1 1	0	0
4	D	1	Total C O 2 1 1	0	0

- Molecule 5 is water.

Mol	Chain	Residues	Atoms	ZeroOcc	AltConf
5	A	4	Total O 4 4	0	0
5	B	7	Total O 7 7	0	0
5	C	7	Total O 7 7	0	0
5	D	2	Total O 2 2	0	0

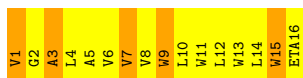
3 Residue-property plots [i](#)

These plots are drawn for all protein, RNA, DNA and oligosaccharide chains in the entry. The first graphic for a chain summarises the proportions of the various outlier classes displayed in the second graphic. The second graphic shows the sequence view annotated by issues in geometry. Residues are color-coded according to the number of geometric quality criteria for which they contain at least one outlier: green = 0, yellow = 1, orange = 2 and red = 3 or more. Stretches of 2 or more consecutive residues without any outlier are shown as a green connector. Residues present in the sample, but not in the model, are shown in grey.

Note EDS was not executed.

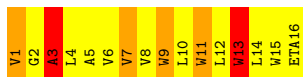
- Molecule 1: GRAMICIDIN A

Chain A:  69% 31%



- Molecule 1: GRAMICIDIN A

Chain B:  62% 25% 12%




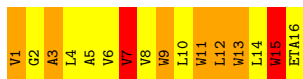
- Molecule 1: GRAMICIDIN A

Chain C:  62% 38%



- Molecule 1: GRAMICIDIN A

Chain D:  50% 38% 12%



4 Data and refinement statistics

Xtriage (Phenix) and EDS were not executed - this section is therefore incomplete.

Property	Value	Source
Space group	P 21 21 21	Depositor
Cell constants a, b, c, α , β , γ	32.12Å 52.10Å 31.17Å 90.00° 90.00° 90.00°	Depositor
Resolution (Å)	5.00 – 2.00	Depositor
% Data completeness (in resolution range)	(Not available) (5.00-2.00)	Depositor
R_{merge}	(Not available)	Depositor
R_{sym}	(Not available)	Depositor
Refinement program	X-PLOR	Depositor
R, R_{free}	0.232 , (Not available)	Depositor
Estimated twinning fraction	No twinning to report.	Xtriage
Total number of atoms	604	wwPDB-VP
Average B, all atoms (Å ²)	21.0	wwPDB-VP

5 Model quality i

5.1 Standard geometry i

Bond lengths and bond angles in the following residue types are not validated in this section: MOH, DVA, ETA, DLE, CL, CS, FVA

The Z score for a bond length (or angle) is the number of standard deviations the observed value is removed from the expected value. A bond length (or angle) with $|Z| > 5$ is considered an outlier worth inspection. RMSZ is the root-mean-square of all Z scores of the bond lengths (or angles).

Mol	Chain	Bond lengths		Bond angles	
		RMSZ	# $ Z > 5$	RMSZ	# $ Z > 5$
1	A	1.72	1/78 (1.3%)	1.62	1/100 (1.0%)
1	B	1.47	0/78	1.98	2/100 (2.0%)
1	C	1.99	0/78	1.64	2/100 (2.0%)
1	D	1.46	0/78	2.09	4/100 (4.0%)
All	All	1.67	1/312 (0.3%)	1.85	9/400 (2.2%)

Chiral center outliers are detected by calculating the chiral volume of a chiral center and verifying if the center is modelled as a planar moiety or with the opposite hand. A planarity outlier is detected by checking planarity of atoms in a peptide group, atoms in a mainchain group or atoms of a sidechain that are expected to be planar.

Mol	Chain	#Chirality outliers	#Planarity outliers
1	A	1	0
1	B	0	1
1	C	1	0
1	D	1	2
All	All	3	3

All (1) bond length outliers are listed below:

Mol	Chain	Res	Type	Atoms	Z	Observed(Å)	Ideal(Å)
1	A	15	TRP	CB-CG	-6.31	1.30	1.50

The worst 5 of 9 bond angle outliers are listed below:

Mol	Chain	Res	Type	Atoms	Z	Observed(°)	Ideal(°)
1	D	7	VAL	CB-CA-C	10.02	130.44	111.40
1	D	7	VAL	N-CA-CB	-6.69	100.12	111.50
1	B	9	TRP	N-CA-CB	6.36	121.31	110.50
1	D	7	VAL	CG1-CB-CG2	6.05	124.11	110.80

Continued on next page...

Continued from previous page...

Mol	Chain	Res	Type	Atoms	Z	Observed(°)	Ideal(°)
1	B	13	TRP	CB-CA-C	5.84	121.20	110.10

All (3) chirality outliers are listed below:

Mol	Chain	Res	Type	Atom
1	A	6	DVA	CA
1	C	8	DVA	CA
1	D	8	DVA	CA

All (3) planarity outliers are listed below:

Mol	Chain	Res	Type	Group
1	B	3	ALA	Mainchain
1	D	12	DLE	Mainchain
1	D	15	TRP	Mainchain

5.2 Too-close contacts [i](#)

In the following table, the Non-H and H(model) columns list the number of non-hydrogen atoms and hydrogen atoms in the chain respectively. The H(added) column lists the number of hydrogen atoms added and optimized by MolProbity. The Clashes column lists the number of clashes within the asymmetric unit, whereas Symm-Clashes lists symmetry-related clashes.

Mol	Chain	Non-H	H(model)	H(added)	Clashes	Symm-Clashes
1	A	136	0	125	151	1
1	B	136	0	126	149	0
1	C	136	0	126	157	1
1	D	136	0	124	164	0
2	A	3	0	0	0	0
2	B	1	0	0	1	0
2	C	1	0	0	0	0
2	D	3	0	0	0	0
3	A	2	0	0	2	0
3	B	1	0	0	1	0
3	C	2	0	0	2	0
3	D	1	0	0	4	0
4	A	8	0	0	3	0
4	B	6	0	0	1	0
4	C	4	0	0	2	0
4	D	8	0	0	10	1
5	A	4	0	0	4	0

Continued on next page...

Continued from previous page...

Mol	Chain	Non-H	H(model)	H(added)	Clashes	Symm-Clashes
5	B	7	0	0	8	0
5	C	7	0	0	2	0
5	D	2	0	0	10	0
All	All	604	0	501	382	2

The all-atom clashscore is defined as the number of clashes found per 1000 atoms (including hydrogen atoms). The all-atom clashscore for this structure is 352.

The worst 5 of 382 close contacts within the same asymmetric unit are listed below, sorted by their clash magnitude.

Atom-1	Atom-2	Interatomic distance (Å)	Clash overlap (Å)
1:C:10:DLE:HB2	1:C:11:TRP:CZ3	1.63	1.31
1:A:9:TRP:NE1	1:B:11:TRP:HB2	1.47	1.28
1:A:6:DVA:CG2	1:B:8:DVA:HA	1.70	1.22
1:A:1:FVA:HG13	1:B:13:TRP:CZ3	1.83	1.13
1:C:7:VAL:HG12	1:D:7:VAL:HG13	1.24	1.13

All (2) symmetry-related close contacts are listed below. The label for Atom-2 includes the symmetry operator and encoded unit-cell translations to be applied.

Atom-1	Atom-2	Interatomic distance (Å)	Clash overlap (Å)
1:A:1:FVA:O1	1:A:16:ETA:O[3_555]	2.11	0.09
1:C:1:FVA:O1	4:D:131:MOH:O[3_655]	2.13	0.07

5.3 Torsion angles [i](#)

5.3.1 Protein backbone [i](#)

In the following table, the Percentiles column shows the percent Ramachandran outliers of the chain as a percentile score with respect to all X-ray entries followed by that with respect to entries of similar resolution.

The Analysed column shows the number of residues for which the backbone conformation was analysed, and the total number of residues.

Mol	Chain	Analysed	Favoured	Allowed	Outliers	Percentiles
1	A	8/16 (50%)	5 (62%)	2 (25%)	1 (12%)	0 0
1	B	8/16 (50%)	4 (50%)	3 (38%)	1 (12%)	0 0

Continued on next page...

Continued from previous page...

Mol	Chain	Analysed	Favoured	Allowed	Outliers	Percentiles	
1	C	8/16 (50%)	5 (62%)	2 (25%)	1 (12%)	0	0
1	D	8/16 (50%)	4 (50%)	2 (25%)	2 (25%)	0	0
All	All	32/64 (50%)	18 (56%)	9 (28%)	5 (16%)	0	0

All (5) Ramachandran outliers are listed below:

Mol	Chain	Res	Type
1	B	3	ALA
1	A	3	ALA
1	C	3	ALA
1	D	3	ALA
1	D	7	VAL

5.3.2 Protein sidechains [i](#)

In the following table, the Percentiles column shows the percent sidechain outliers of the chain as a percentile score with respect to all X-ray entries followed by that with respect to entries of similar resolution.

The Analysed column shows the number of residues for which the sidechain conformation was analysed, and the total number of residues.

Mol	Chain	Analysed	Rotameric	Outliers	Percentiles	
1	A	5/5 (100%)	3 (60%)	2 (40%)	0	0
1	B	5/5 (100%)	2 (40%)	3 (60%)	0	0
1	C	5/5 (100%)	2 (40%)	3 (60%)	0	0
1	D	5/5 (100%)	2 (40%)	3 (60%)	0	0
All	All	20/20 (100%)	9 (45%)	11 (55%)	0	0

5 of 11 residues with a non-rotameric sidechain are listed below:

Mol	Chain	Res	Type
1	C	13	TRP
1	D	11	TRP
1	D	15	TRP
1	D	13	TRP
1	B	13	TRP

Sometimes sidechains can be flipped to improve hydrogen bonding and reduce clashes. There are no such sidechains identified.

5.3.3 RNA [i](#)

There are no RNA molecules in this entry.

5.4 Non-standard residues in protein, DNA, RNA chains [i](#)

32 non-standard protein/DNA/RNA residues are modelled in this entry.

In the following table, the Counts columns list the number of bonds (or angles) for which Mogul statistics could be retrieved, the number of bonds (or angles) that are observed in the model and the number of bonds (or angles) that are defined in the Chemical Component Dictionary. The Link column lists molecule types, if any, to which the group is linked. The Z score for a bond length (or angle) is the number of standard deviations the observed value is removed from the expected value. A bond length (or angle) with $|Z| > 2$ is considered an outlier worth inspection. RMSZ is the root-mean-square of all Z scores of the bond lengths (or angles).

Mol	Type	Chain	Res	Link	Bond lengths			Bond angles		
					Counts	RMSZ	# Z > 2	Counts	RMSZ	# Z > 2
1	ETA	A	16	1	3,3,3	0.95	0	2,2,2	0.70	0
1	FVA	C	1	1	7,8,9	1.64	1 (14%)	9,9,11	2.21	4 (44%)
1	ETA	B	16	1	3,3,3	0.60	0	2,2,2	0.81	0
1	ETA	C	16	1	3,3,3	0.72	0	2,2,2	0.30	0
1	FVA	B	1	1	7,8,9	3.10	1 (14%)	9,9,11	2.51	5 (55%)
1	FVA	D	1	1	7,8,9	1.87	3 (42%)	9,9,11	4.37	3 (33%)
1	ETA	D	16	1	3,3,3	0.42	0	2,2,2	0.87	0
1	FVA	A	1	1	7,8,9	1.69	2 (28%)	9,9,11	2.08	2 (22%)

In the following table, the Chirals column lists the number of chiral outliers, the number of chiral centers analysed, the number of these observed in the model and the number defined in the Chemical Component Dictionary. Similar counts are reported in the Torsion and Rings columns. '-' means no outliers of that kind were identified.

Mol	Type	Chain	Res	Link	Chirals	Torsions	Rings
1	ETA	A	16	1	-	1/1/1/1	-
1	FVA	C	1	1	-	6/7/9/11	-
1	DVA	A	6	1	1/1/2/3	-	-
1	DVA	C	8	1	1/1/2/3	-	-
1	ETA	B	16	1	-	1/1/1/1	-
1	DVA	D	8	1	1/1/2/3	-	-
1	ETA	C	16	1	-	1/1/1/1	-
1	FVA	B	1	1	-	7/7/9/11	-
1	FVA	D	1	1	-	6/7/9/11	-
1	ETA	D	16	1	-	0/1/1/1	-

Continued on next page...

Continued from previous page...

Mol	Type	Chain	Res	Link	Chirals	Torsions	Rings
1	FVA	A	1	1	-	4/7/9/11	-

The worst 5 of 7 bond length outliers are listed below:

Mol	Chain	Res	Type	Atoms	Z	Observed(Å)	Ideal(Å)
1	B	1	FVA	CA-N	7.54	1.56	1.46
1	A	1	FVA	CB-CA	-3.75	1.48	1.54
1	C	1	FVA	CA-N	3.49	1.51	1.46
1	D	1	FVA	CA-N	3.04	1.50	1.46
1	D	1	FVA	O-C	2.32	1.28	1.20

The worst 5 of 14 bond angle outliers are listed below:

Mol	Chain	Res	Type	Atoms	Z	Observed(°)	Ideal(°)
1	D	1	FVA	C-CA-N	11.70	128.24	109.80
1	D	1	FVA	CA-N-CN	4.67	130.32	122.42
1	A	1	FVA	CB-CA-C	-4.47	107.20	112.96
1	B	1	FVA	C-CA-N	4.16	116.36	109.80
1	C	1	FVA	CG2-CB-CG1	-3.85	100.00	110.58

All (3) chirality outliers are listed below:

Mol	Chain	Res	Type	Atom
1	A	6	DVA	CA
1	C	8	DVA	CA
1	D	8	DVA	CA

5 of 26 torsion outliers are listed below:

Mol	Chain	Res	Type	Atoms
1	A	1	FVA	C-CA-CB-CG1
1	A	1	FVA	C-CA-CB-CG2
1	A	1	FVA	N-CA-CB-CG1
1	A	1	FVA	N-CA-CB-CG2
1	B	1	FVA	O-C-CA-CB

There are no ring outliers.

11 monomers are involved in 123 short contacts:

Mol	Chain	Res	Type	Clashes	Symm-Clashes
1	A	16	ETA	10	1

Continued on next page...

Continued from previous page...

Mol	Chain	Res	Type	Clashes	Symm-Clashes
1	C	1	FVA	4	1
1	A	6	DVA	27	0
1	C	8	DVA	24	0
1	B	16	ETA	7	0
1	D	8	DVA	11	0
1	C	16	ETA	6	0
1	B	1	FVA	8	0
1	D	1	FVA	9	0
1	D	16	ETA	8	0
1	A	1	FVA	7	1

5.5 Carbohydrates [i](#)

There are no oligosaccharides in this entry.

5.6 Ligand geometry [i](#)

Of 27 ligands modelled in this entry, 14 are monoatomic - leaving 13 for Mogul analysis.

In the following table, the Counts columns list the number of bonds (or angles) for which Mogul statistics could be retrieved, the number of bonds (or angles) that are observed in the model and the number of bonds (or angles) that are defined in the Chemical Component Dictionary. The Link column lists molecule types, if any, to which the group is linked. The Z score for a bond length (or angle) is the number of standard deviations the observed value is removed from the expected value. A bond length (or angle) with $|Z| > 2$ is considered an outlier worth inspection. RMSZ is the root-mean-square of all Z scores of the bond lengths (or angles).

Mol	Type	Chain	Res	Link	Bond lengths			Bond angles		
					Counts	RMSZ	$\# Z > 2$	Counts	RMSZ	$\# Z > 2$
4	MOH	D	131	-	1,1,1	0.18	0	-		
4	MOH	C	120	2	1,1,1	0.62	0	-		
4	MOH	A	145	-	1,1,1	0.10	0	-		
4	MOH	B	151	-	1,1,1	0.42	0	-		
4	MOH	D	132	-	1,1,1	0.85	0	-		
4	MOH	D	127	-	1,1,1	0.19	0	-		
4	MOH	A	133	2	1,1,1	0.24	0	-		
4	MOH	A	140	-	1,1,1	0.44	0	-		
4	MOH	A	138	-	1,1,1	0.24	0	-		
4	MOH	C	122	-	1,1,1	0.06	0	-		
4	MOH	B	139	-	1,1,1	0.10	0	-		
4	MOH	D	121	-	1,1,1	0.18	0	-		
4	MOH	B	146	-	1,1,1	0.31	0	-		

There are no bond length outliers.

There are no bond angle outliers.

There are no chirality outliers.

There are no torsion outliers.

There are no ring outliers.

8 monomers are involved in 17 short contacts:

Mol	Chain	Res	Type	Clashes	Symm-Clashes
4	D	131	MOH	3	1
4	C	120	MOH	1	0
4	D	132	MOH	6	0
4	A	133	MOH	2	0
4	A	138	MOH	1	0
4	C	122	MOH	1	0
4	D	121	MOH	1	0
4	B	146	MOH	1	0

5.7 Other polymers [i](#)

There are no such residues in this entry.

5.8 Polymer linkage issues [i](#)

There are no chain breaks in this entry.

6 Fit of model and data

6.1 Protein, DNA and RNA chains

EDS was not executed - this section is therefore empty.

6.2 Non-standard residues in protein, DNA, RNA chains

EDS was not executed - this section is therefore empty.

6.3 Carbohydrates

EDS was not executed - this section is therefore empty.

6.4 Ligands

EDS was not executed - this section is therefore empty.

6.5 Other polymers

EDS was not executed - this section is therefore empty.