



wwPDB X-ray Structure Validation Summary Report ⓘ

Mar 12, 2026 – 08:54 PM UTC

PDB ID : 7C64 / pdb_00007c64
Title : Crystal structure of beta-glycosides-binding protein of ABC transporter in an open state (Form II)
Authors : Kanaujia, S.P.; Chandravanshi, M.; Samanta, R.
Deposited on : 2020-05-21
Resolution : 1.63 Å (reported)

This is a wwPDB X-ray Structure Validation Summary Report for a publicly released PDB entry.

We welcome your comments at validation@mail.wwpdb.org

A user guide is available at

<https://www.wwpdb.org/validation/2017/XrayValidationReportHelp>

with specific help available everywhere you see the ⓘ symbol.

The types of validation reports are described at

<http://www.wwpdb.org/validation/2017/FAQs#types>.

The following versions of software and data (see [references ⓘ](#)) were used in the production of this report:

MolProbity : 4-5-2 with Phenix2.0
Mogul : 2022.3.0, CSD as543be (2022)
Xtriage (Phenix) : 2.0
EDS : 3.0
Buster-report : wwPDB partial adaption of 1.1.7 (2018)
Percentile statistics : 20250101.v01 (using entries in the PDB archive January 1st 2025)
CCP4 : 9.0.010 (Gargrove)
Density-Fitness : 1.0.12
Ideal geometry (proteins) : Engh & Huber (2001)
Ideal geometry (DNA, RNA) : Parkinson et al. (1996)
Validation Pipeline (wwPDB-VP) : 2.49

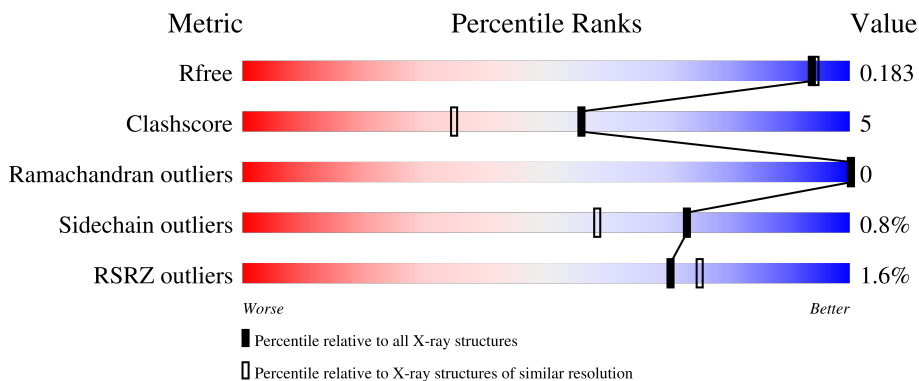
1 Overall quality at a glance

The following experimental techniques were used to determine the structure:

X-RAY DIFFRACTION

The reported resolution of this entry is 1.63 Å.

Percentile scores (ranging between 0-100) for global validation metrics of the entry are shown in the following graphic. The table shows the number of entries on which the scores are based.



Metric	Whole archive (#Entries)	Similar resolution (#Entries, resolution range(Å))
R_{free}	180053	1141 (1.64-1.64)
Clashscore	190562	1171 (1.64-1.64)
Ramachandran outliers	187476	1151 (1.64-1.64)
Sidechain outliers	187428	1150 (1.64-1.64)
RSRZ outliers	180081	1141 (1.64-1.64)

The table below summarises the geometric issues observed across the polymeric chains and their fit to the electron density. The red, orange, yellow and green segments of the lower bar indicate the fraction of residues that contain outliers for ≥ 3 , 2, 1 and 0 types of geometric quality criteria respectively. A grey segment represents the fraction of residues that are not modelled. The numeric value for each fraction is indicated below the corresponding segment, with a dot representing fractions $\leq 5\%$. The upper red bar (where present) indicates the fraction of residues that have poor fit to the electron density. The numeric value is given above the bar.

Mol	Chain	Length	Quality of chain
1	A	423	 91% 7% ..
1	B	423	 84% 13% ..

The following table lists non-polymeric compounds, carbohydrate monomers and non-standard residues in protein, DNA, RNA chains that are outliers for geometric or electron-density-fit criteria:

Mol	Type	Chain	Res	Chirality	Geometry	Clashes	Electron density
8	MRY	A	511	-	X	-	-
8	MRY	B	512	-	X	-	-

2 Entry composition [i](#)

There are 11 unique types of molecules in this entry. The entry contains 7498 atoms, of which 0 are hydrogens and 0 are deuteriums.

In the tables below, the ZeroOcc column contains the number of atoms modelled with zero occupancy, the AltConf column contains the number of residues with at least one atom in alternate conformation and the Trace column contains the number of residues modelled with at most 2 atoms.

- Molecule 1 is a protein called Sugar ABC transporter, periplasmic sugar-binding protein.

Mol	Chain	Residues	Atoms					ZeroOcc	AltConf	Trace
			Total	C	N	O	S			
1	A	415	3201	2060	549	581	11	0	6	0
1	B	415	3234	2086	555	582	11	0	11	0

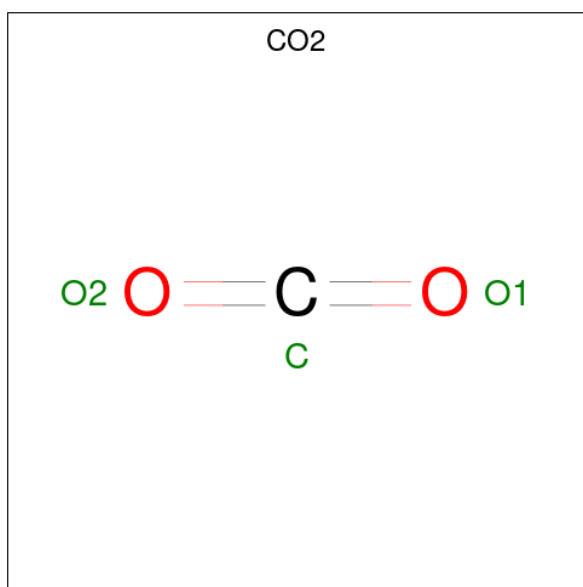
There are 14 discrepancies between the modelled and reference sequences:

Chain	Residue	Modelled	Actual	Comment	Reference
A	0	MET	-	initiating methionine	UNP Q53W80
A	417	HIS	-	expression tag	UNP Q53W80
A	418	HIS	-	expression tag	UNP Q53W80
A	419	HIS	-	expression tag	UNP Q53W80
A	420	HIS	-	expression tag	UNP Q53W80
A	421	HIS	-	expression tag	UNP Q53W80
A	422	HIS	-	expression tag	UNP Q53W80
B	0	MET	-	initiating methionine	UNP Q53W80
B	417	HIS	-	expression tag	UNP Q53W80
B	418	HIS	-	expression tag	UNP Q53W80
B	419	HIS	-	expression tag	UNP Q53W80
B	420	HIS	-	expression tag	UNP Q53W80
B	421	HIS	-	expression tag	UNP Q53W80
B	422	HIS	-	expression tag	UNP Q53W80

- Molecule 2 is CHLORIDE ION (CCD ID: CL) (formula: Cl).

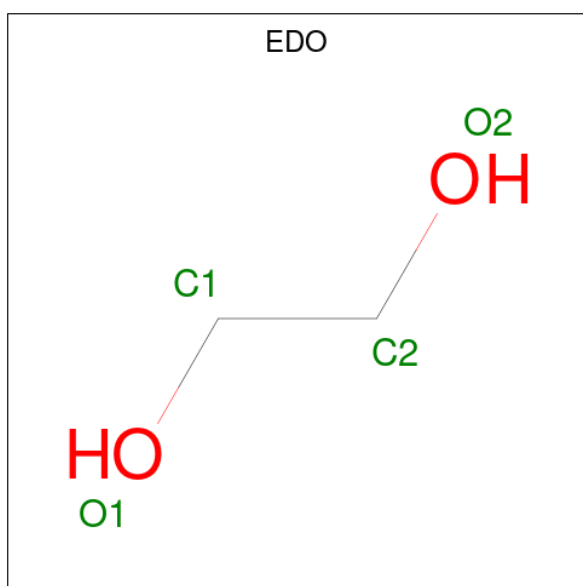
Mol	Chain	Residues	Atoms		ZeroOcc	AltConf
2	A	3	Total	Cl	0	0
			3	3		
2	B	5	Total	Cl	0	0
			5	5		

- Molecule 3 is CARBON DIOXIDE (CCD ID: CO2) (formula: CO₂).



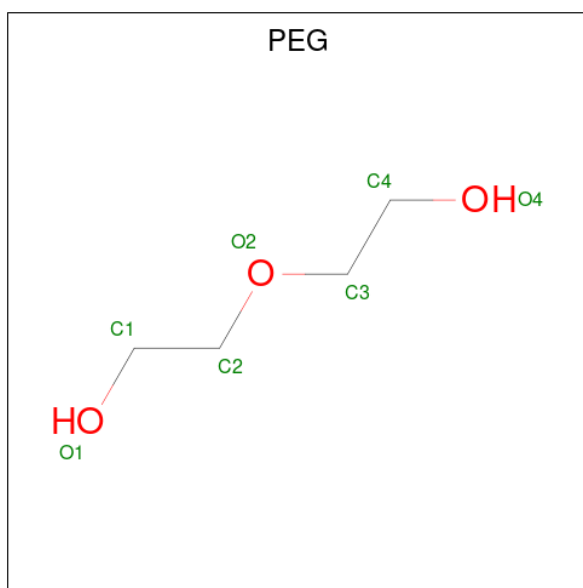
Mol	Chain	Residues	Atoms			ZeroOcc	AltConf
3	A	1	Total	C	O	0	0
			3	1	2		
3	B	1	Total	C	O	0	0
			3	1	2		

- Molecule 4 is 1,2-ETHANEDIOL (CCD ID: EDO) (formula: C₂H₆O₂).



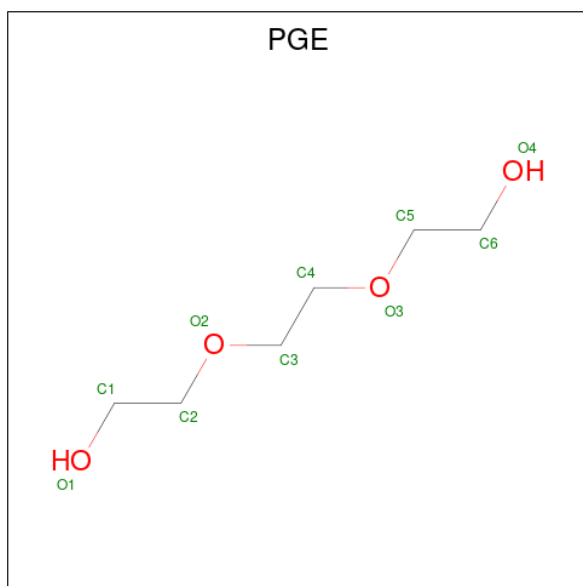
Mol	Chain	Residues	Atoms			ZeroOcc	AltConf
4	A	1	Total	C	O	0	0
			4	2	2		
4	A	1	Total	C	O	0	0
			4	2	2		

- Molecule 5 is DI(HYDROXYETHYL)ETHER (CCD ID: PEG) (formula: $C_4H_{10}O_3$).



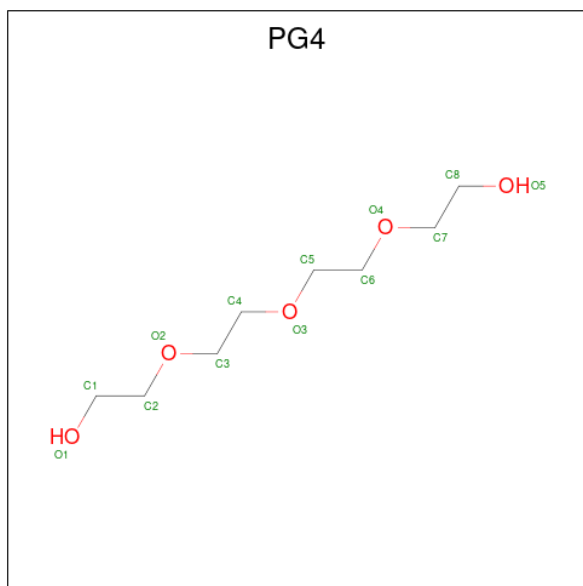
Mol	Chain	Residues	Atoms	ZeroOcc	AltConf
5	A	1	Total C O 7 4 3	0	0
5	A	1	Total C O 7 4 3	0	0
5	B	1	Total C O 7 4 3	0	0

- Molecule 6 is TRIETHYLENE GLYCOL (CCD ID: PGE) (formula: $C_6H_{14}O_4$).



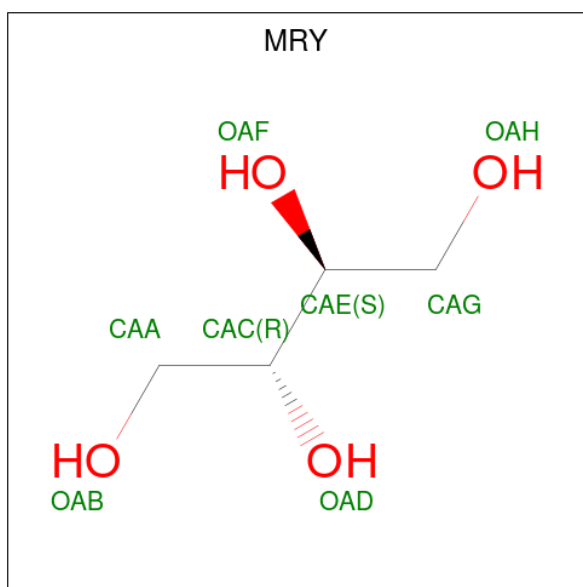
Mol	Chain	Residues	Atoms			ZeroOcc	AltConf
6	A	1	Total	C	O	0	0
			10	6	4		
6	B	1	Total	C	O	0	0
			10	6	4		
6	B	1	Total	C	O	0	0
			10	6	4		

- Molecule 7 is TETRAETHYLENE GLYCOL (CCD ID: PG4) (formula: C₈H₁₈O₅).



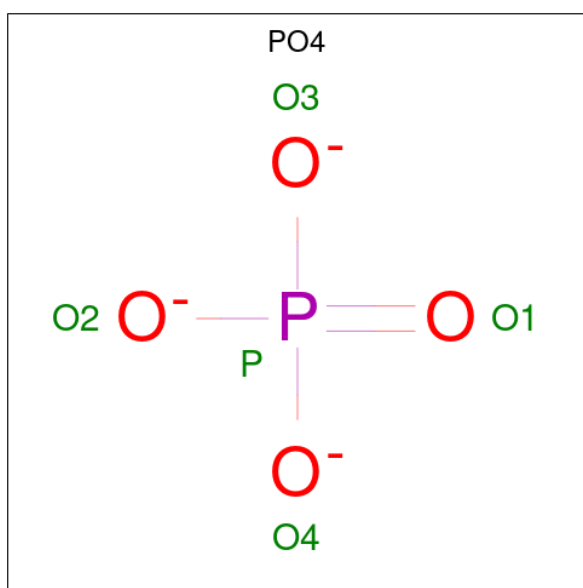
Mol	Chain	Residues	Atoms			ZeroOcc	AltConf
7	A	1	Total	C	O	0	0
			13	8	5		

- Molecule 8 is MESO-ERYTHRITOL (CCD ID: MRY) (formula: C₄H₁₀O₄).



Mol	Chain	Residues	Atoms	ZeroOcc	AltConf
8	A	1	Total C O 8 4 4	0	0
8	B	1	Total C O 8 4 4	0	0

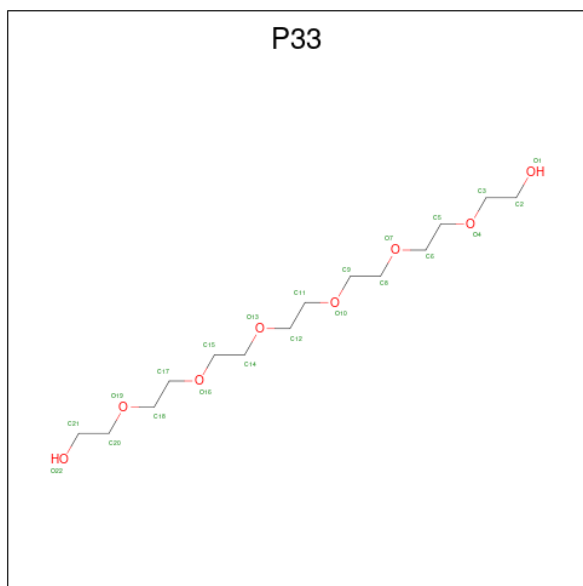
- Molecule 9 is PHOSPHATE ION (CCD ID: PO4) (formula: O_4P).



Mol	Chain	Residues	Atoms	ZeroOcc	AltConf
9	B	1	Total O P 5 4 1	0	0

- Molecule 10 is 3,6,9,12,15,18-HEXAOXAIICOSANE-1,20-DIOL (CCD ID: P33) (formula:

C₁₄H₃₀O₈).



Mol	Chain	Residues	Atoms		ZeroOcc	AltConf
10	B	1	Total	C O	0	0
			22	14 8		

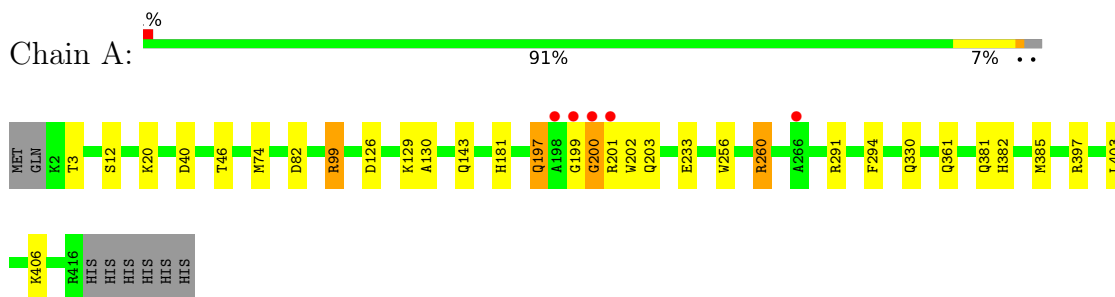
- Molecule 11 is water.

Mol	Chain	Residues	Atoms		ZeroOcc	AltConf
11	A	482	Total	O	0	0
			482	482		
11	B	452	Total	O	0	0
			452	452		

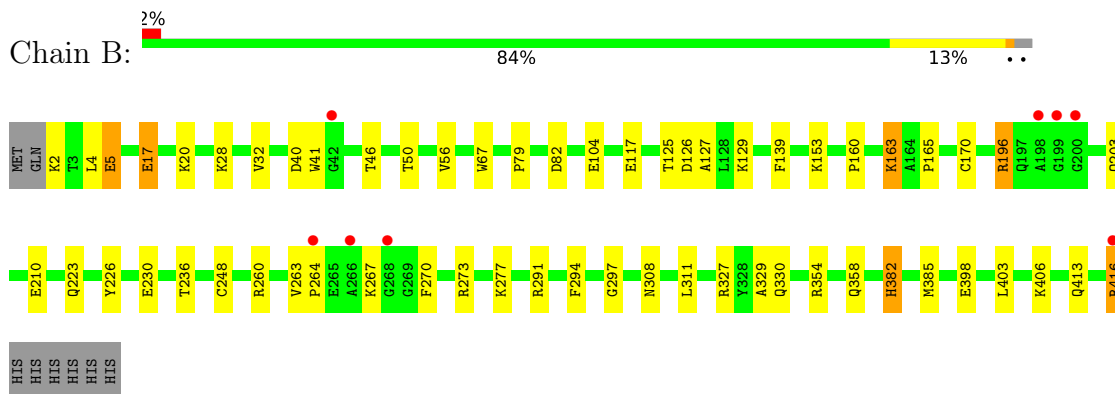
3 Residue-property plots [i](#)

These plots are drawn for all protein, RNA, DNA and oligosaccharide chains in the entry. The first graphic for a chain summarises the proportions of the various outlier classes displayed in the second graphic. The second graphic shows the sequence view annotated by issues in geometry and electron density. Residues are color-coded according to the number of geometric quality criteria for which they contain at least one outlier: green = 0, yellow = 1, orange = 2 and red = 3 or more. A red dot above a residue indicates a poor fit to the electron density ($RSRZ > 2$). Stretches of 2 or more consecutive residues without any outlier are shown as a green connector. Residues present in the sample, but not in the model, are shown in grey.

- Molecule 1: Sugar ABC transporter, periplasmic sugar-binding protein



- Molecule 1: Sugar ABC transporter, periplasmic sugar-binding protein



4 Data and refinement statistics

Property	Value	Source
Space group	P 1 21 1	Depositor
Cell constants a, b, c, α , β , γ	57.46Å 100.71Å 66.26Å 90.00° 104.19° 90.00°	Depositor
Resolution (Å)	50.36 – 1.63 50.36 – 1.63	Depositor EDS
% Data completeness (in resolution range)	99.9 (50.36-1.63) 99.9 (50.36-1.63)	Depositor EDS
R_{merge}	0.05	Depositor
R_{sym}	(Not available)	Depositor
$\langle I/\sigma(I) \rangle$ ¹	6.54 (at 1.63Å)	Xtrriage
Refinement program	REFMAC 5.8.0258	Depositor
R, R_{free}	0.133 , 0.166 (Not available) , 0.183	Depositor DCC
R_{free} test set	4480 reflections (4.92%)	wwPDB-VP
Wilson B-factor (Å ²)	11.9	Xtrriage
Anisotropy	0.119	Xtrriage
Bulk solvent k_{sol} (e/Å ³), B_{sol} (Å ²)	0.36 , 41.8	EDS
L-test for twinning ²	$\langle L \rangle = 0.50$, $\langle L^2 \rangle = 0.33$	Xtrriage
Estimated twinning fraction	No twinning to report.	Xtrriage
F_o, F_c correlation	0.96	EDS
Total number of atoms	7498	wwPDB-VP
Average B, all atoms (Å ²)	14.0	wwPDB-VP

Xtrriage's analysis on translational NCS is as follows: *The largest off-origin peak in the Patterson function is 5.59% of the height of the origin peak. No significant pseudotranslation is detected.*

¹Intensities estimated from amplitudes.

²Theoretical values of $\langle |L| \rangle$, $\langle L^2 \rangle$ for acentric reflections are 0.5, 0.333 respectively for untwinned datasets, and 0.375, 0.2 for perfectly twinned datasets.

5 Model quality [i](#)

5.1 Standard geometry [i](#)

Bond lengths and bond angles in the following residue types are not validated in this section: PG4, MRY, P33, PO4, PGE, EDO, CO2, CL, PEG

The Z score for a bond length (or angle) is the number of standard deviations the observed value is removed from the expected value. A bond length (or angle) with $|Z| > 5$ is considered an outlier worth inspection. RMSZ is the root-mean-square of all Z scores of the bond lengths (or angles).

Mol	Chain	Bond lengths		Bond angles	
		RMSZ	# Z >5	RMSZ	# Z >5
1	A	1.37	14/3307 (0.4%)	1.41	18/4501 (0.4%)
1	B	1.31	13/3355 (0.4%)	1.40	15/4560 (0.3%)
All	All	1.34	27/6662 (0.4%)	1.41	33/9061 (0.4%)

Chiral center outliers are detected by calculating the chiral volume of a chiral center and verifying if the center is modelled as a planar moiety or with the opposite hand. A planarity outlier is detected by checking planarity of atoms in a peptide group, atoms in a mainchain group or atoms of a sidechain that are expected to be planar.

Mol	Chain	#Chirality outliers	#Planarity outliers
1	A	0	1

The worst 5 of 27 bond length outliers are listed below:

Mol	Chain	Res	Type	Atoms	Z	Observed(Å)	Ideal(Å)
1	B	41	TRP	C-O	-12.41	1.08	1.24
1	A	201	ARG	C-O	10.22	1.37	1.23
1	A	202	TRP	N-CA	8.12	1.55	1.46
1	B	104	GLU	CD-OE1	7.96	1.40	1.25
1	A	200	GLY	C-O	7.64	1.33	1.24

The worst 5 of 33 bond angle outliers are listed below:

Mol	Chain	Res	Type	Atoms	Z	Observed(°)	Ideal(°)
1	A	260	ARG	NE-CZ-NH1	-15.68	105.82	121.50
1	A	260	ARG	NE-CZ-NH2	11.14	129.22	119.20
1	B	139	PHE	CA-C-O	-8.91	109.44	119.95
1	A	260	ARG	CG-CD-NE	-8.76	92.74	112.00
1	A	143	GLN	CB-CG-CD	8.29	126.69	112.60

There are no chirality outliers.

All (1) planarity outliers are listed below:

Mol	Chain	Res	Type	Group
1	A	197	GLN	Mainchain

5.2 Too-close contacts [i](#)

In the following table, the Non-H and H(model) columns list the number of non-hydrogen atoms and hydrogen atoms in the chain respectively. The H(added) column lists the number of hydrogen atoms added and optimized by MolProbity. The Clashes column lists the number of clashes within the asymmetric unit, whereas Symm-Clashes lists symmetry-related clashes.

Mol	Chain	Non-H	H(model)	H(added)	Clashes	Symm-Clashes
1	A	3201	0	3178	12	0
1	B	3234	0	3241	40	0
2	A	3	0	0	0	0
2	B	5	0	0	1	0
3	A	3	0	0	0	0
3	B	3	0	0	0	0
4	A	8	0	12	1	0
5	A	14	0	20	2	0
5	B	7	0	10	0	0
6	A	10	0	14	5	0
6	B	20	0	28	1	0
7	A	13	0	18	2	0
8	A	8	0	9	3	0
8	B	8	0	9	3	0
9	B	5	0	0	0	0
10	B	22	0	30	6	0
11	A	482	0	0	8	3
11	B	452	0	0	18	3
All	All	7498	0	6569	61	3

The all-atom clashscore is defined as the number of clashes found per 1000 atoms (including hydrogen atoms). The all-atom clashscore for this structure is 5.

The worst 5 of 61 close contacts within the same asymmetric unit are listed below, sorted by their clash magnitude.

Atom-1	Atom-2	Interatomic distance (Å)	Clash overlap (Å)
6:A:509:PGE:HO4	7:A:510:PG4:HO1	1.08	0.90
1:B:170:CYS:CB	1:B:248[B]:CYS:SG	2.61	0.89

Continued on next page...

Continued from previous page...

Atom-1	Atom-2	Interatomic distance (Å)	Clash overlap (Å)
1:B:5:GLU:CD	11:B:610:HOH:O	2.17	0.86
1:B:358[B]:GLN:OE1	11:B:601:HOH:O	1.95	0.83
1:B:170:CYS:HB2	1:B:248[B]:CYS:SG	2.19	0.82

All (3) symmetry-related close contacts are listed below. The label for Atom-2 includes the symmetry operator and encoded unit-cell translations to be applied.

Atom-1	Atom-2	Interatomic distance (Å)	Clash overlap (Å)
11:A:798:HOH:O	11:B:630:HOH:O[2_655]	1.84	0.36
11:A:909:HOH:O	11:B:903:HOH:O[1_556]	2.08	0.12
11:A:892:HOH:O	11:B:820:HOH:O[1_556]	2.10	0.10

5.3 Torsion angles [i](#)

5.3.1 Protein backbone [i](#)

In the following table, the Percentiles column shows the percent Ramachandran outliers of the chain as a percentile score with respect to all X-ray entries followed by that with respect to entries of similar resolution.

The Analysed column shows the number of residues for which the backbone conformation was analysed, and the total number of residues.

Mol	Chain	Analysed	Favoured	Allowed	Outliers	Percentiles	
1	A	419/423 (99%)	415 (99%)	4 (1%)	0	100	100
1	B	424/423 (100%)	418 (99%)	6 (1%)	0	100	100
All	All	843/846 (100%)	833 (99%)	10 (1%)	0	100	100

There are no Ramachandran outliers to report.

5.3.2 Protein sidechains [i](#)

In the following table, the Percentiles column shows the percent sidechain outliers of the chain as a percentile score with respect to all X-ray entries followed by that with respect to entries of similar resolution.

The Analysed column shows the number of residues for which the sidechain conformation was analysed, and the total number of residues.

Mol	Chain	Analysed	Rotameric	Outliers	Percentiles	
1	A	320/322 (99%)	320 (100%)	0	100	100
1	B	325/322 (101%)	319 (98%)	6 (2%)	51	26
All	All	645/644 (100%)	639 (99%)	6 (1%)	73	54

5 of 6 residues with a non-rotameric sidechain are listed below:

Mol	Chain	Res	Type
1	B	230	GLU
1	B	267	LYS
1	B	416	ARG
1	B	163[B]	LYS
1	B	163[A]	LYS

Sometimes sidechains can be flipped to improve hydrogen bonding and reduce clashes. All (2) such sidechains are listed below:

Mol	Chain	Res	Type
1	A	197	GLN
1	A	392	GLN

5.3.3 RNA [i](#)

There are no RNA molecules in this entry.

5.4 Non-standard residues in protein, DNA, RNA chains [i](#)

There are no non-standard protein/DNA/RNA residues in this entry.

5.5 Carbohydrates [i](#)

There are no oligosaccharides in this entry.

5.6 Ligand geometry [i](#)

Of 23 ligands modelled in this entry, 8 are monoatomic - leaving 15 for Mogul analysis.

In the following table, the Counts columns list the number of bonds (or angles) for which Mogul statistics could be retrieved, the number of bonds (or angles) that are observed in the model and the number of bonds (or angles) that are defined in the Chemical Component Dictionary. The Link column lists molecule types, if any, to which the group is linked. The Z score for a bond

length (or angle) is the number of standard deviations the observed value is removed from the expected value. A bond length (or angle) with $|Z| > 2$ is considered an outlier worth inspection. RMSZ is the root-mean-square of all Z scores of the bond lengths (or angles).

Mol	Type	Chain	Res	Link	Bond lengths			Bond angles		
					Counts	RMSZ	# Z > 2	Counts	RMSZ	# Z > 2
5	PEG	A	507	-	6,6,6	0.20	0	5,5,5	0.23	0
6	PGE	B	509	-	9,9,9	0.23	0	8,8,8	0.18	0
8	MRY	B	512	-	7,7,7	2.28	3 (42%)	8,8,8	3.84	6 (75%)
9	PO4	B	507	-	4,4,4	0.72	0	6,6,6	0.44	0
5	PEG	A	508	-	6,6,6	0.21	0	5,5,5	0.23	0
6	PGE	A	509	-	9,9,9	0.22	0	8,8,8	0.18	0
7	PG4	A	510	-	12,12,12	0.16	0	11,11,11	0.27	0
4	EDO	A	506	-	3,3,3	0.17	0	2,2,2	0.14	0
4	EDO	A	505	-	3,3,3	0.50	0	2,2,2	0.41	0
5	PEG	B	508	-	6,6,6	0.31	0	5,5,5	0.31	0
10	P33	B	511	-	21,21,21	0.66	0	20,20,20	1.50	2 (10%)
3	CO2	A	504	-	2,2,2	0.06	0	1,1,1	1.15	0
3	CO2	B	506	-	2,2,2	0.10	0	1,1,1	1.08	0
6	PGE	B	510	-	9,9,9	0.38	0	8,8,8	0.42	0
8	MRY	A	511	-	7,7,7	2.62	4 (57%)	8,8,8	3.57	6 (75%)

In the following table, the Chirals column lists the number of chiral outliers, the number of chiral centers analysed, the number of these observed in the model and the number defined in the Chemical Component Dictionary. Similar counts are reported in the Torsion and Rings columns. '-' means no outliers of that kind were identified.

Mol	Type	Chain	Res	Link	Chirals	Torsions	Rings
5	PEG	A	507	-	-	1/4/4/4	-
6	PGE	B	509	-	-	1/7/7/7	-
8	MRY	B	512	-	-	7/8/8/8	-
5	PEG	A	508	-	-	1/4/4/4	-
6	PGE	A	509	-	-	2/7/7/7	-
7	PG4	A	510	-	-	5/10/10/10	-
4	EDO	A	506	-	-	0/1/1/1	-
4	EDO	A	505	-	-	1/1/1/1	-
5	PEG	B	508	-	-	2/4/4/4	-
10	P33	B	511	-	-	8/19/19/19	-
6	PGE	B	510	-	-	3/7/7/7	-
8	MRY	A	511	-	-	6/8/8/8	-

The worst 5 of 7 bond length outliers are listed below:

Mol	Chain	Res	Type	Atoms	Z	Observed(Å)	Ideal(Å)
8	A	511	MRY	OAH-CAG	-4.72	1.22	1.42
8	B	512	MRY	OAH-CAG	-4.55	1.23	1.42
8	A	511	MRY	CAG-CAE	-3.69	1.43	1.52
8	B	512	MRY	CAG-CAE	-2.73	1.45	1.52
8	B	512	MRY	CAE-CAC	-2.39	1.47	1.53

The worst 5 of 14 bond angle outliers are listed below:

Mol	Chain	Res	Type	Atoms	Z	Observed(°)	Ideal(°)
8	B	512	MRY	OAD-CAC-CAE	-7.54	93.74	109.57
8	A	511	MRY	OAB-CAA-CAC	-6.94	96.57	111.16
10	B	511	P33	O4-C3-C2	4.81	131.32	110.11
8	B	512	MRY	OAB-CAA-CAC	-4.39	101.93	111.16
8	B	512	MRY	CAA-CAC-CAE	4.33	121.82	113.00

There are no chirality outliers.

5 of 37 torsion outliers are listed below:

Mol	Chain	Res	Type	Atoms
8	A	511	MRY	CAA-CAC-CAE-OAF
8	A	511	MRY	CAA-CAC-CAE-CAG
8	A	511	MRY	OAD-CAC-CAE-OAF
8	A	511	MRY	OAD-CAC-CAE-CAG
8	A	511	MRY	CAC-CAE-CAG-OAH

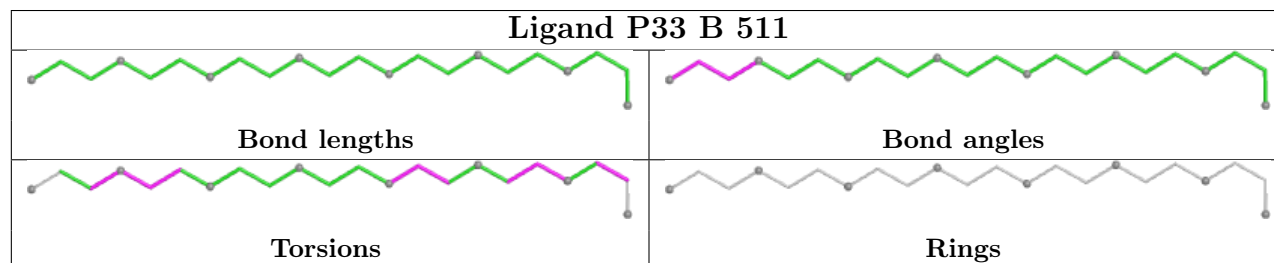
There are no ring outliers.

9 monomers are involved in 21 short contacts:

Mol	Chain	Res	Type	Clashes	Symm-Clashes
5	A	507	PEG	1	0
8	B	512	MRY	3	0
5	A	508	PEG	2	0
6	A	509	PGE	5	0
7	A	510	PG4	2	0
4	A	505	EDO	1	0
10	B	511	P33	6	0
6	B	510	PGE	1	0
8	A	511	MRY	3	0

The following is a two-dimensional graphical depiction of Mogul quality analysis of bond lengths, bond angles, torsion angles, and ring geometry for all instances of the Ligand of Interest. In addition, ligands with molecular weight > 250 and outliers as shown on the validation Tables will

also be included. For torsion angles, if less than 5% of the Mogul distribution of torsion angles is within 10 degrees of the torsion angle in question, then that torsion angle is considered an outlier. Any bond that is central to one or more torsion angles identified as an outlier by Mogul will be highlighted in the graph. For rings, the root-mean-square deviation (RMSD) between the ring in question and similar rings identified by Mogul is calculated over all ring torsion angles. If the average RMSD is greater than 60 degrees and the minimal RMSD between the ring in question and any Mogul-identified rings is also greater than 60 degrees, then that ring is considered an outlier. The outliers are highlighted in purple. The color gray indicates Mogul did not find sufficient equivalents in the CSD to analyse the geometry.



5.7 Other polymers [i](#)

There are no such residues in this entry.

5.8 Polymer linkage issues [i](#)

There are no chain breaks in this entry.

6 Fit of model and data [i](#)

6.1 Protein, DNA and RNA chains [i](#)

In the following table, the column labelled ‘#RSRZ> 2’ contains the number (and percentage) of RSRZ outliers, followed by percent RSRZ outliers for the chain as percentile scores relative to all X-ray entries and entries of similar resolution. The OWAB column contains the minimum, median, 95th percentile and maximum values of the occupancy-weighted average B-factor per residue. The column labelled ‘Q< 0.9’ lists the number of (and percentage) of residues with an average occupancy less than 0.9.

Mol	Chain	Analysed	<RSRZ>	#RSRZ>2	OWAB(Å ²)	Q<0.9
1	A	415/423 (98%)	-0.44	5 (1%) 76 81	6, 11, 23, 44	6 (1%)
1	B	415/423 (98%)	-0.43	8 (1%) 66 72	6, 11, 24, 57	11 (2%)
All	All	830/846 (98%)	-0.44	13 (1%) 70 75	6, 11, 23, 57	17 (2%)

The worst 5 of 13 RSRZ outliers are listed below:

Mol	Chain	Res	Type	RSRZ
1	B	266	ALA	4.8
1	A	200	GLY	4.3
1	A	198	ALA	3.7
1	B	198	ALA	3.6
1	B	200	GLY	3.4

6.2 Non-standard residues in protein, DNA, RNA chains [i](#)

There are no non-standard protein/DNA/RNA residues in this entry.

6.3 Carbohydrates [i](#)

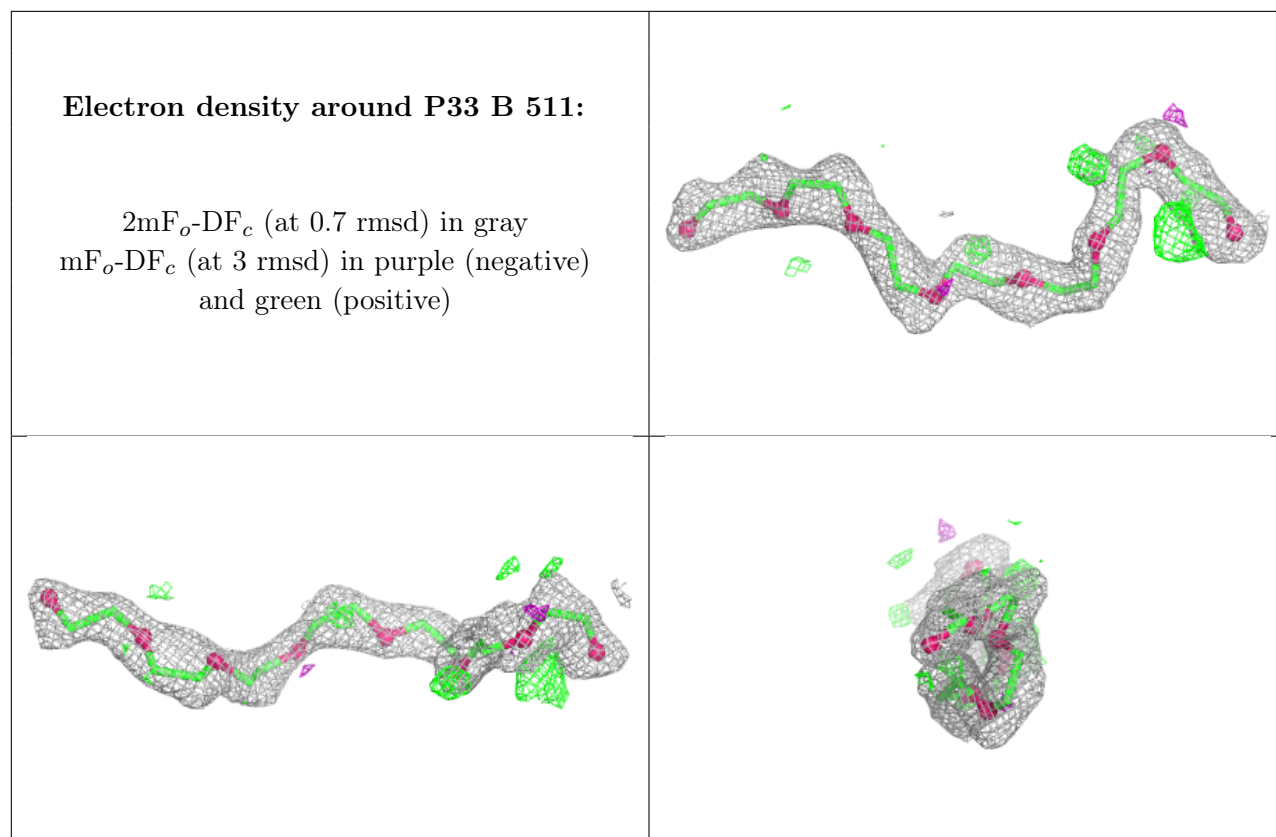
There are no oligosaccharides in this entry.

6.4 Ligands [i](#)

In the following table, the Atoms column lists the number of modelled atoms in the group and the number defined in the chemical component dictionary. The B-factors column lists the minimum, median, 95th percentile and maximum values of B factors of atoms in the group. The column labelled ‘Q< 0.9’ lists the number of atoms with occupancy less than 0.9.

Mol	Type	Chain	Res	Atoms	RSCC	RSR	B-factors(\AA^2)	Q<0.9
4	EDO	A	505	4/4	0.73	0.20	36,37,40,43	0
8	MRY	A	511	8/8	0.74	0.17	24,29,36,40	0
8	MRY	B	512	8/8	0.75	0.17	23,32,36,36	0
3	CO2	A	504	3/3	0.79	0.11	38,38,39,44	0
3	CO2	B	506	3/3	0.80	0.12	35,35,35,44	0
5	PEG	B	508	7/7	0.81	0.15	40,43,44,44	0
4	EDO	A	506	4/4	0.82	0.13	31,31,33,33	0
6	PGE	B	509	10/10	0.83	0.14	34,38,46,49	0
10	P33	B	511	22/22	0.84	0.14	23,38,45,45	0
5	PEG	A	507	7/7	0.85	0.12	27,32,35,38	0
5	PEG	A	508	7/7	0.86	0.13	35,41,44,48	0
6	PGE	B	510	10/10	0.87	0.13	25,31,36,42	0
6	PGE	A	509	10/10	0.88	0.11	26,31,37,45	0
2	CL	B	505	1/1	0.88	0.14	33,33,33,33	0
7	PG4	A	510	13/13	0.90	0.10	23,29,45,48	0
9	PO4	B	507	5/5	0.91	0.08	35,36,40,42	0
2	CL	A	503	1/1	0.92	0.12	41,41,41,41	0
2	CL	B	504	1/1	0.92	0.11	35,35,35,35	0
2	CL	B	503	1/1	0.95	0.08	41,41,41,41	0
2	CL	A	502	1/1	0.99	0.09	20,20,20,20	0
2	CL	A	501	1/1	0.99	0.05	14,14,14,14	0
2	CL	B	501	1/1	1.00	0.01	10,10,10,10	0
2	CL	B	502	1/1	1.00	0.09	21,21,21,21	0

The following is a graphical depiction of the model fit to experimental electron density of all instances of the Ligand of Interest. In addition, ligands with molecular weight > 250 and outliers as shown on the geometry validation Tables will also be included. Each fit is shown from different orientation to approximate a three-dimensional view.



6.5 Other polymers [i](#)

There are no such residues in this entry.