



wwPDB EM Validation Summary Report ⓘ

Mar 23, 2026 – 04:26 AM UTC

PDB ID : 2C7C / pdb_00002c7c
EMDB ID : EMD-1180
Title : FITTED COORDINATES FOR GROEL-ATP7-GROES CRYO-EM COMPLEX (EMD-1180)
Authors : Ranson, N.A.; Clare, D.K.; Farr, G.W.; Houldershaw, D.; Horwich, A.L.; Saibil, H.R.
Deposited on : 2005-11-22
Resolution : 7.70 Å(reported)

This is a wwPDB EM Validation Summary Report for a publicly released PDB entry.

We welcome your comments at validation@mail.wwpdb.org

A user guide is available at

<https://www.wwpdb.org/validation/2017/EMValidationReportHelp>

with specific help available everywhere you see the ⓘ symbol.

The types of validation reports are described at

<http://www.wwpdb.org/validation/2017/FAQs#types>.

The following versions of software and data (see [references ⓘ](#)) were used in the production of this report:

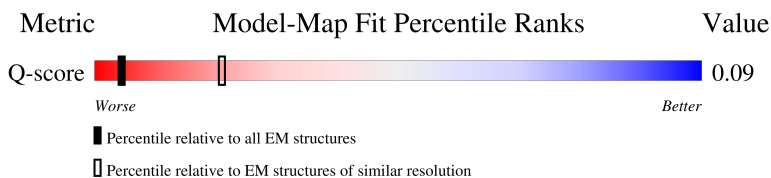
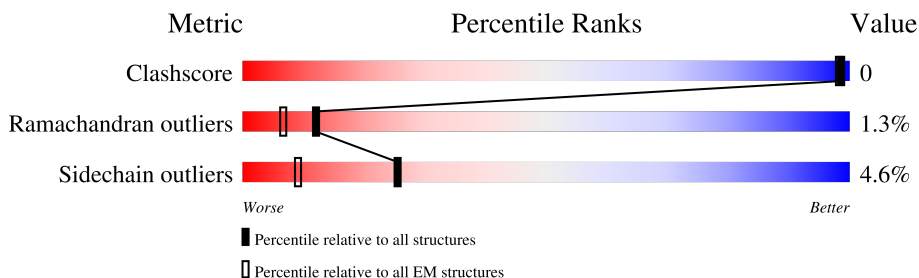
EMDB validation analysis : 0.0.1.dev132
MolProbity : 4-5-2 with Phenix2.0
Percentile statistics : 20250101.v01 (using entries in the PDB archive January 1st 2025)
EM percentile statistics : 202505.v01 (Using data in the EMDB archive up until May 2025)
MapQ : 1.9.13
Ideal geometry (proteins) : Engh & Huber (2001)
Ideal geometry (DNA, RNA) : Parkinson et al. (1996)
Validation Pipeline (wwPDB-VP) : 2.49

1 Overall quality at a glance i

The following experimental techniques were used to determine the structure:
ELECTRON MICROSCOPY

The reported resolution of this entry is 7.70 Å.

Percentile scores (ranging between 0-100) for global validation metrics of the entry are shown in the following graphic. The table shows the number of entries on which the scores are based.



Metric	Whole archive (#Entries)	EM structures (#Entries)	Similar EM resolution (#Entries, resolution range(Å))
Clashscore	229148	23984	-
Ramachandran outliers	224038	23583	-
Sidechain outliers	223484	23102	-
Q-score	-	25397	384 (7.20 - 8.20)

The table below summarises the geometric issues observed across the polymeric chains and their fit to the map. The red, orange, yellow and green segments of the bar indicate the fraction of residues that contain outliers for ≥ 3 , 2, 1 and 0 types of geometric quality criteria respectively. A grey segment represents the fraction of residues that are not modelled. The numeric value for each fraction is indicated below the corresponding segment, with a dot representing fractions $\leq 5\%$. The upper red bar (where present) indicates the fraction of residues that have poor fit to the EM map (all-atom inclusion $< 40\%$). The numeric value is given above the bar.

Mol	Chain	Length	Quality of chain
1	A	547	10% (red), 91% (green), 5% (yellow), . (grey)
1	B	547	10% (red), 92% (green), . (yellow), . (grey)
1	C	547	9% (red), 91% (green), 5% (yellow), . (grey)
1	D	547	9% (red), 92% (green), . (yellow), . (grey)

Continued on next page...

Continued from previous page...

Mol	Chain	Length	Quality of chain
1	E	547	9% 91% 5% .
1	F	547	8% 92% . .
1	G	547	9% 92% . .
1	H	547	12% 90% 6% .
1	I	547	14% 90% 5% .
1	J	547	13% 89% 6% .
1	K	547	14% 90% 6% .
1	L	547	14% 90% 5% .
1	M	547	16% 91% 5% .
1	N	547	14% 90% 6% .
2	O	97	12% 87% 8% . .
2	P	97	9% 79% 13% . . .
2	Q	97	12% 81% 14% .
2	R	97	14% 80% 14% . .
2	S	97	11% 82% 12% . .
2	T	97	10% 85% 9% . . .
2	U	97	12% 84% 11% . .

2 Entry composition [i](#)

There are 2 unique types of molecules in this entry. The entry contains 57946 atoms, of which 0 are hydrogens and 0 are deuteriums.

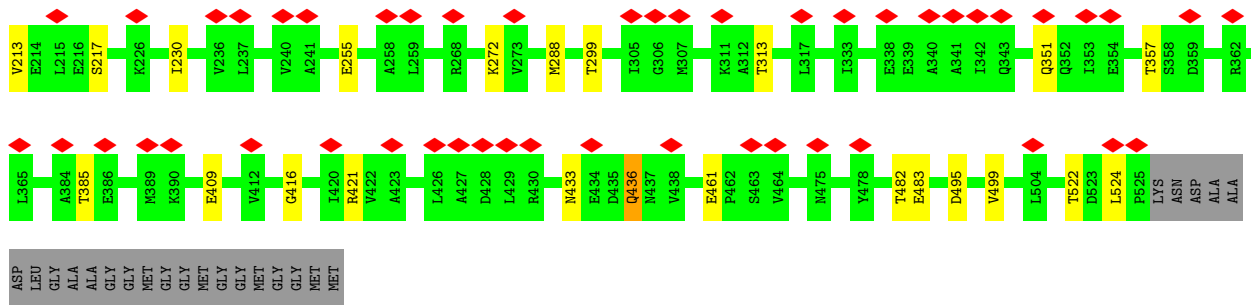
In the tables below, the AltConf column contains the number of residues with at least one atom in alternate conformation and the Trace column contains the number of residues modelled with at most 2 atoms.

- Molecule 1 is a protein called 60 KDA CHAPERONIN.

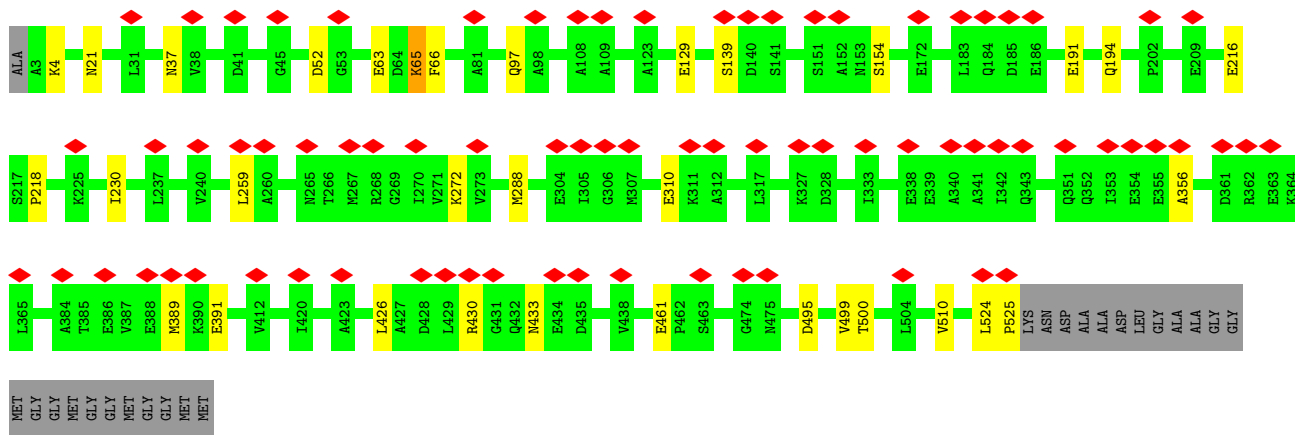
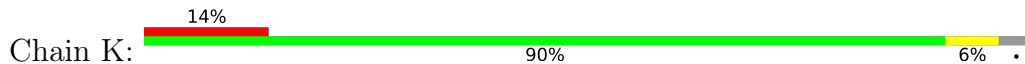
Mol	Chain	Residues	Atoms					AltConf	Trace
			Total	C	N	O	S		
1	A	525	3805	2397	622	766	20	0	1
1	B	525	3805	2397	622	766	20	0	1
1	C	525	3805	2397	622	766	20	0	1
1	D	525	3805	2397	622	766	20	0	1
1	E	525	3805	2397	622	766	20	0	1
1	F	525	3805	2397	622	766	20	0	1
1	G	525	3805	2397	622	766	20	0	1
1	H	523	3793	2389	620	764	20	0	1
1	I	523	3793	2389	620	764	20	0	1
1	J	523	3793	2389	620	764	20	0	1
1	K	523	3793	2389	620	764	20	0	1
1	L	523	3793	2389	620	764	20	0	1
1	M	523	3793	2389	620	764	20	0	1
1	N	523	3793	2389	620	764	20	0	1

- Molecule 2 is a protein called 10 KDA CHAPERONIN MOLECULE: GROES, PROTEIN CPN10, GROES PROTEIN.

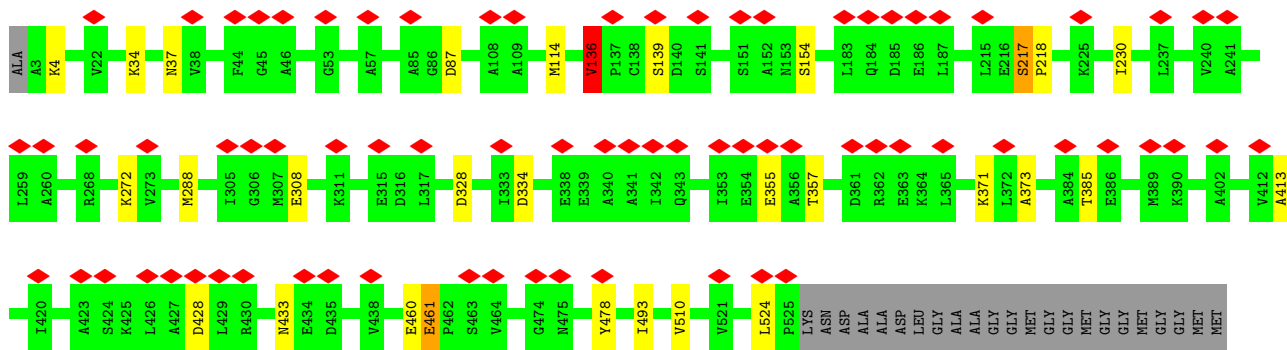
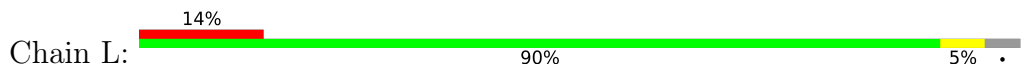
Mol	Chain	Residues	Atoms					AltConf	Trace
2	O	93	Total	C	N	O	S	0	1
			680	432	112	135	1		
2	P	93	Total	C	N	O	S	0	1
			680	432	112	135	1		
2	Q	93	Total	C	N	O	S	0	1
			680	432	112	135	1		
2	R	93	Total	C	N	O	S	0	1
			680	432	112	135	1		
2	S	93	Total	C	N	O	S	0	1
			680	432	112	135	1		
2	T	93	Total	C	N	O	S	0	1
			680	432	112	135	1		
2	U	93	Total	C	N	O	S	0	1
			680	432	112	135	1		



• Molecule 1: 60 KDA CHAPERONIN

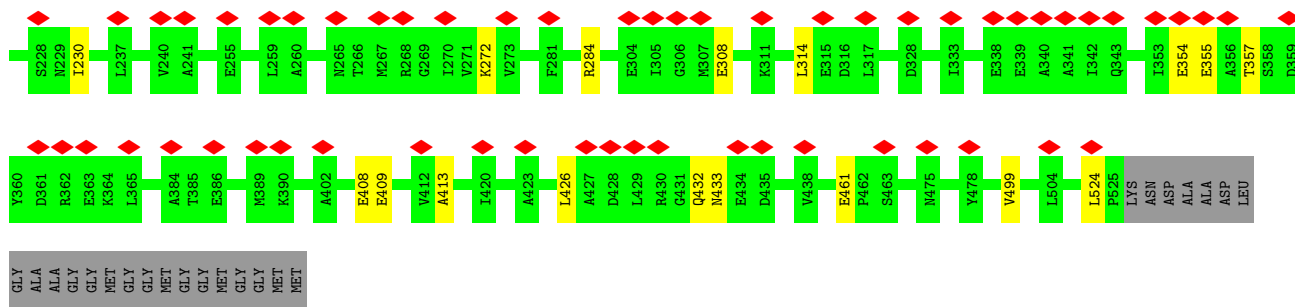


• Molecule 1: 60 KDA CHAPERONIN

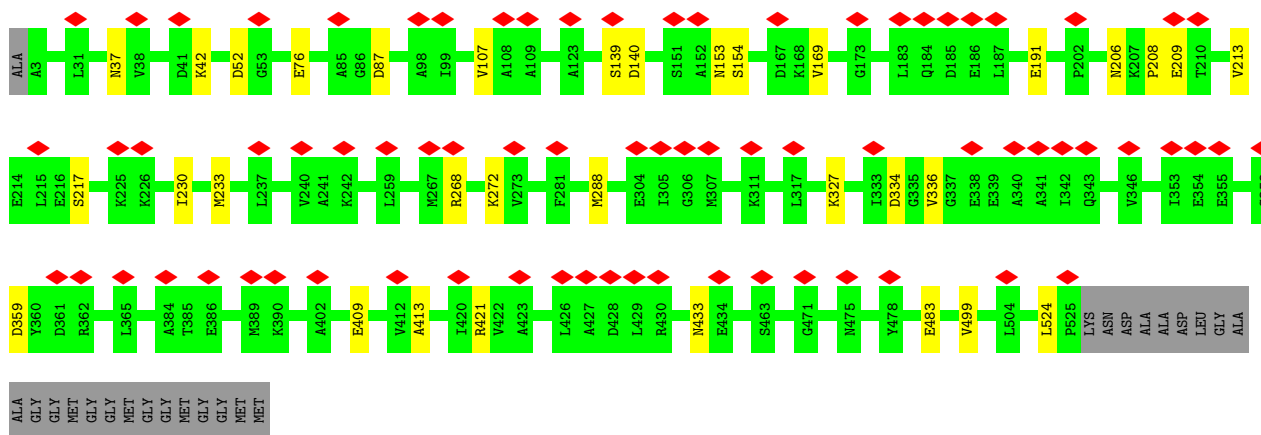
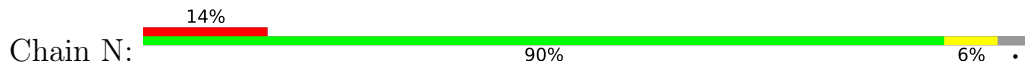


• Molecule 1: 60 KDA CHAPERONIN

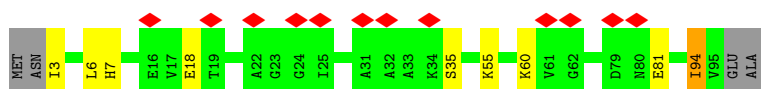
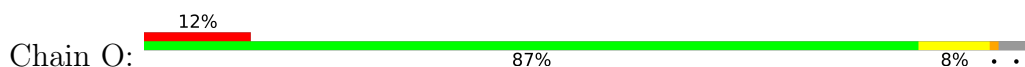




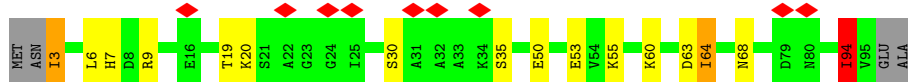
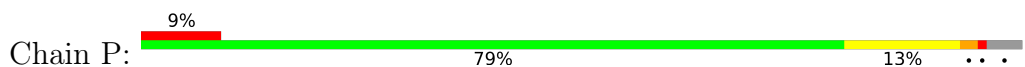
• Molecule 1: 60 KDA CHAPERONIN



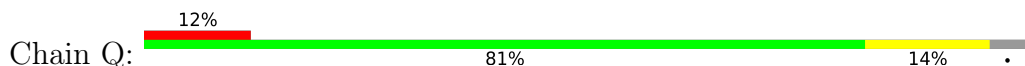
• Molecule 2: 10 KDA CHAPERONIN MOLECULE: GROES, PROTEIN CPN10, GROES PROTEIN



• Molecule 2: 10 KDA CHAPERONIN MOLECULE: GROES, PROTEIN CPN10, GROES PROTEIN

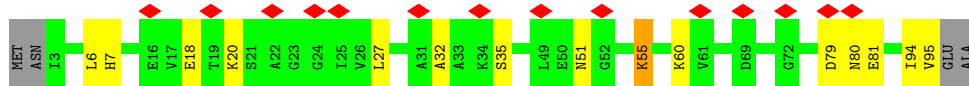
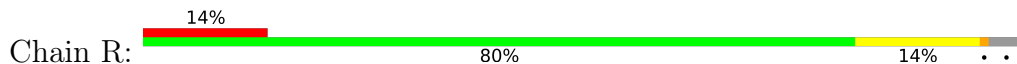


• Molecule 2: 10 KDA CHAPERONIN MOLECULE: GROES, PROTEIN CPN10, GROES PROTEIN

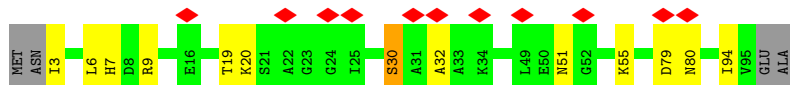
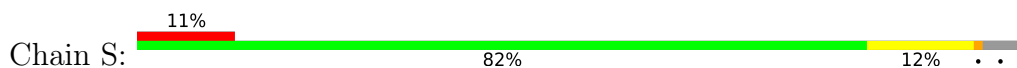




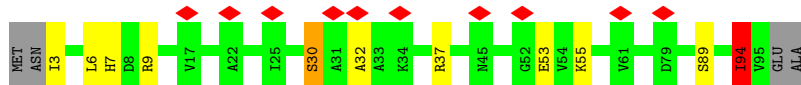
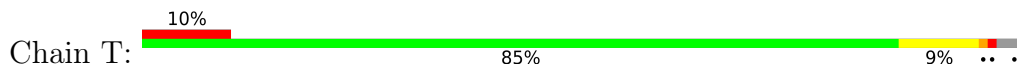
• Molecule 2: 10 KDA CHAPERONIN MOLECULE: GROES, PROTEIN CPN10, GROES PROTEIN



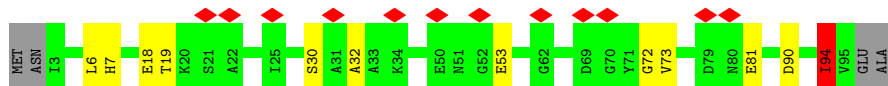
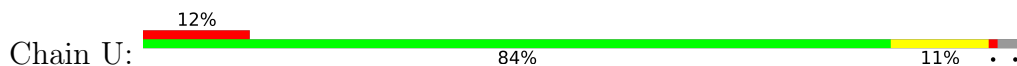
• Molecule 2: 10 KDA CHAPERONIN MOLECULE: GROES, PROTEIN CPN10, GROES PROTEIN



• Molecule 2: 10 KDA CHAPERONIN MOLECULE: GROES, PROTEIN CPN10, GROES PROTEIN



• Molecule 2: 10 KDA CHAPERONIN MOLECULE: GROES, PROTEIN CPN10, GROES PROTEIN



4 Experimental information

Property	Value	Source
EM reconstruction method	SINGLE PARTICLE	Depositor
Imposed symmetry	POINT, C7	Depositor
Number of particles used	16281	Depositor
Resolution determination method	Not provided	
CTF correction method	FULL CORRECTION ON 2D CLASS AVERAGES	Depositor
Microscope	FEI TECNAI F20	Depositor
Voltage (kV)	200	Depositor
Electron dose ($e^-/\text{\AA}^2$)	15	Depositor
Minimum defocus (nm)	1100	Depositor
Maximum defocus (nm)	3200	Depositor
Magnification	50000	Depositor
Image detector	KODAK SO-163 FILM	Depositor
Maximum map value	2.382	Depositor
Minimum map value	-1.791	Depositor
Average map value	0.064	Depositor
Map value standard deviation	0.230	Depositor
Recommended contour level	0.608	Depositor
Map size (Å)	268.8, 268.8, 268.8	wwPDB
Map dimensions	192, 192, 192	wwPDB
Map angles (°)	90, 90, 90	wwPDB
Pixel spacing (Å)	1.4, 1.4, 1.4	Depositor

5 Model quality i

5.1 Standard geometry i

The Z score for a bond length (or angle) is the number of standard deviations the observed value is removed from the expected value. A bond length (or angle) with $|Z| > 5$ is considered an outlier worth inspection. RMSZ is the root-mean-square of all Z scores of the bond lengths (or angles).

Mol	Chain	Bond lengths		Bond angles	
		RMSZ	# Z >5	RMSZ	# Z >5
1	A	0.81	1/3833 (0.0%)	1.38	4/5165 (0.1%)
1	B	0.81	1/3833 (0.0%)	1.37	4/5165 (0.1%)
1	C	0.80	1/3833 (0.0%)	1.34	7/5165 (0.1%)
1	D	0.80	1/3833 (0.0%)	1.36	4/5165 (0.1%)
1	E	0.80	1/3833 (0.0%)	1.35	1/5165 (0.0%)
1	F	0.79	1/3833 (0.0%)	1.35	2/5165 (0.0%)
1	G	0.81	1/3833 (0.0%)	1.36	6/5165 (0.1%)
1	H	0.80	1/3820 (0.0%)	1.39	5/5146 (0.1%)
1	I	0.82	1/3820 (0.0%)	1.38	4/5146 (0.1%)
1	J	0.81	1/3820 (0.0%)	1.38	8/5146 (0.2%)
1	K	0.81	1/3820 (0.0%)	1.37	5/5146 (0.1%)
1	L	0.82	1/3820 (0.0%)	1.38	6/5146 (0.1%)
1	M	0.82	1/3820 (0.0%)	1.38	1/5146 (0.0%)
1	N	0.81	1/3820 (0.0%)	1.38	3/5146 (0.1%)
2	O	0.87	1/684 (0.1%)	1.37	0/918
2	P	0.88	1/684 (0.1%)	1.46	2/918 (0.2%)
2	Q	0.89	1/684 (0.1%)	1.41	0/918
2	R	0.89	1/684 (0.1%)	1.44	2/918 (0.2%)
2	S	0.88	1/684 (0.1%)	1.44	2/918 (0.2%)
2	T	0.90	1/684 (0.1%)	1.42	2/918 (0.2%)
2	U	0.89	1/684 (0.1%)	1.45	1/918 (0.1%)
All	All	0.81	21/58359 (0.0%)	1.37	69/78603 (0.1%)

Chiral center outliers are detected by calculating the chiral volume of a chiral center and verifying if the center is modelled as a planar moiety or with the opposite hand. A planarity outlier is detected by checking planarity of atoms in a peptide group, atoms in a mainchain group or atoms of a sidechain that are expected to be planar.

Mol	Chain	#Chirality outliers	#Planarity outliers
1	A	0	1
1	B	0	1
1	C	0	1
1	D	0	2

Continued on next page...

Continued from previous page...

Mol	Chain	#Chirality outliers	#Planarity outliers
1	G	0	1
1	H	0	2
1	I	0	1
1	J	0	3
1	K	0	2
1	L	0	3
1	M	0	2
1	N	1	0
All	All	1	19

The worst 5 of 21 bond length outliers are listed below:

Mol	Chain	Res	Type	Atoms	Z	Observed(Å)	Ideal(Å)
1	N	524	LEU	C-N	-5.88	1.25	1.34
1	D	525	PRO	C-N	-5.88	1.25	1.33
1	K	524	LEU	C-N	-5.79	1.25	1.34
2	Q	94	ILE	C-N	-5.79	1.25	1.33
1	H	524	LEU	C-N	-5.76	1.25	1.34

The worst 5 of 69 bond angle outliers are listed below:

Mol	Chain	Res	Type	Atoms	Z	Observed($^{\circ}$)	Ideal($^{\circ}$)
2	S	79	ASP	CA-C-N	6.78	134.48	121.54
2	S	79	ASP	C-N-CA	6.78	134.48	121.54
1	J	482	THR	CA-C-N	6.14	133.27	121.54
1	J	482	THR	C-N-CA	6.14	133.27	121.54
1	D	461	GLU	CA-C-N	6.04	125.52	119.24

All (1) chirality outliers are listed below:

Mol	Chain	Res	Type	Atom
1	N	120	ILE	CB

5 of 19 planarity outliers are listed below:

Mol	Chain	Res	Type	Group
1	A	4	LYS	Peptide
1	B	4	LYS	Peptide
1	C	4	LYS	Peptide
1	D	183	LEU	Peptide
1	D	4	LYS	Peptide

5.2 Too-close contacts [i](#)

In the following table, the Non-H and H(model) columns list the number of non-hydrogen atoms and hydrogen atoms in the chain respectively. The H(added) column lists the number of hydrogen atoms added and optimized by MolProbity. The Clashes column lists the number of clashes within the asymmetric unit, whereas Symm-Clashes lists symmetry-related clashes.

Mol	Chain	Non-H	H(model)	H(added)	Clashes	Symm-Clashes
1	A	3805	0	3881	2	0
1	B	3805	0	3881	0	0
1	C	3805	0	3881	2	0
1	D	3805	0	3881	1	0
1	E	3805	0	3881	2	0
1	F	3805	0	3881	0	0
1	G	3805	0	3881	1	0
1	H	3793	0	3869	3	0
1	I	3793	0	3869	0	0
1	J	3793	0	3869	2	0
1	K	3793	0	3869	1	0
1	L	3793	0	3869	1	0
1	M	3793	0	3869	1	0
1	N	3793	0	3869	0	0
2	O	680	0	703	1	0
2	P	680	0	703	2	0
2	Q	680	0	703	2	0
2	R	680	0	703	2	0
2	S	680	0	703	0	0
2	T	680	0	703	0	0
2	U	680	0	703	0	0
All	All	57946	0	59171	19	0

The all-atom clashscore is defined as the number of clashes found per 1000 atoms (including hydrogen atoms). The all-atom clashscore for this structure is 0.

The worst 5 of 19 close contacts within the same asymmetric unit are listed below, sorted by their clash magnitude.

Atom-1	Atom-2	Interatomic distance (Å)	Clash overlap (Å)
1:M:314:LEU:HD12	1:M:314:LEU:H	1.70	0.55
1:D:7:LYS:HE2	1:D:66:PHE:CE2	2.43	0.54
1:E:7:LYS:HE2	1:E:66:PHE:CE2	2.46	0.50
1:H:7:LYS:HE2	1:H:66:PHE:CE2	2.47	0.50
1:A:510:VAL:HG23	1:G:385:THR:HG21	1.94	0.50

There are no symmetry-related clashes.

5.3 Torsion angles [i](#)

5.3.1 Protein backbone [i](#)

In the following table, the Percentiles column shows the percent Ramachandran outliers of the chain as a percentile score with respect to all PDB entries followed by that with respect to all EM entries.

The Analysed column shows the number of residues for which the backbone conformation was analysed, and the total number of residues.

Mol	Chain	Analysed	Favoured	Allowed	Outliers	Percentiles	
1	A	523/547 (96%)	490 (94%)	29 (6%)	4 (1%)	16	54
1	B	523/547 (96%)	492 (94%)	30 (6%)	1 (0%)	43	78
1	C	523/547 (96%)	493 (94%)	23 (4%)	7 (1%)	9	42
1	D	523/547 (96%)	494 (94%)	25 (5%)	4 (1%)	16	54
1	E	523/547 (96%)	495 (95%)	22 (4%)	6 (1%)	11	46
1	F	523/547 (96%)	481 (92%)	38 (7%)	4 (1%)	16	54
1	G	523/547 (96%)	491 (94%)	28 (5%)	4 (1%)	16	54
1	H	521/547 (95%)	471 (90%)	44 (8%)	6 (1%)	10	44
1	I	521/547 (95%)	481 (92%)	35 (7%)	5 (1%)	12	48
1	J	521/547 (95%)	475 (91%)	42 (8%)	4 (1%)	16	54
1	K	521/547 (95%)	482 (92%)	35 (7%)	4 (1%)	16	54
1	L	521/547 (95%)	479 (92%)	33 (6%)	9 (2%)	7	36
1	M	521/547 (95%)	479 (92%)	39 (8%)	3 (1%)	21	59
1	N	521/547 (95%)	479 (92%)	31 (6%)	11 (2%)	5	30
2	O	91/97 (94%)	73 (80%)	15 (16%)	3 (3%)	3	21
2	P	91/97 (94%)	71 (78%)	15 (16%)	5 (6%)	1	14
2	Q	91/97 (94%)	74 (81%)	14 (15%)	3 (3%)	3	21
2	R	91/97 (94%)	74 (81%)	13 (14%)	4 (4%)	2	17
2	S	91/97 (94%)	70 (77%)	16 (18%)	5 (6%)	1	14
2	T	91/97 (94%)	73 (80%)	14 (15%)	4 (4%)	2	17
2	U	91/97 (94%)	73 (80%)	11 (12%)	7 (8%)	1	10
All	All	7945/8337 (95%)	7290 (92%)	552 (7%)	103 (1%)	12	42

5 of 103 Ramachandran outliers are listed below:

Mol	Chain	Res	Type
1	A	197	ARG
1	C	483	GLU
1	H	154	SER
1	H	483	GLU
1	I	154	SER

5.3.2 Protein sidechains [i](#)

In the following table, the Percentiles column shows the percent sidechain outliers of the chain as a percentile score with respect to all PDB entries followed by that with respect to all EM entries.

The Analysed column shows the number of residues for which the sidechain conformation was analysed, and the total number of residues.

Mol	Chain	Analysed	Rotameric	Outliers	Percentiles	
1	A	404/414 (98%)	385 (95%)	19 (5%)	23	45
1	B	404/414 (98%)	390 (96%)	14 (4%)	32	53
1	C	404/414 (98%)	389 (96%)	15 (4%)	30	51
1	D	404/414 (98%)	391 (97%)	13 (3%)	34	55
1	E	404/414 (98%)	389 (96%)	15 (4%)	30	51
1	F	404/414 (98%)	390 (96%)	14 (4%)	32	53
1	G	404/414 (98%)	393 (97%)	11 (3%)	39	61
1	H	403/414 (97%)	386 (96%)	17 (4%)	26	48
1	I	403/414 (97%)	384 (95%)	19 (5%)	23	45
1	J	403/414 (97%)	383 (95%)	20 (5%)	22	43
1	K	403/414 (97%)	382 (95%)	21 (5%)	21	42
1	L	403/414 (97%)	387 (96%)	16 (4%)	28	49
1	M	403/414 (97%)	385 (96%)	18 (4%)	24	46
1	N	403/414 (97%)	384 (95%)	19 (5%)	23	45
2	O	76/80 (95%)	71 (93%)	5 (7%)	15	37
2	P	76/80 (95%)	65 (86%)	11 (14%)	3	13
2	Q	76/80 (95%)	68 (90%)	8 (10%)	6	21
2	R	76/80 (95%)	68 (90%)	8 (10%)	6	21
2	S	76/80 (95%)	69 (91%)	7 (9%)	8	26

Continued on next page...

Continued from previous page...

Mol	Chain	Analysed	Rotameric	Outliers	Percentiles	
2	T	76/80 (95%)	68 (90%)	8 (10%)	6	21
2	U	76/80 (95%)	71 (93%)	5 (7%)	15	37
All	All	6181/6356 (97%)	5898 (95%)	283 (5%)	25	45

5 of 283 residues with a non-rotameric sidechain are listed below:

Mol	Chain	Res	Type
2	O	6	LEU
2	P	9	ARG
2	R	55	LYS
1	G	225	LYS
1	G	184	GLN

Sometimes sidechains can be flipped to improve hydrogen bonding and reduce clashes. 5 of 48 such sidechains are listed below:

Mol	Chain	Res	Type
1	H	348	GLN
1	K	10	ASN
1	H	351	GLN
1	I	97	GLN
1	K	352	GLN

5.3.3 RNA [i](#)

There are no RNA molecules in this entry.

5.4 Non-standard residues in protein, DNA, RNA chains [i](#)

There are no non-standard protein/DNA/RNA residues in this entry.

5.5 Carbohydrates [i](#)

There are no oligosaccharides in this entry.

5.6 Ligand geometry [i](#)

There are no ligands in this entry.

5.7 Other polymers [i](#)

There are no such residues in this entry.

5.8 Polymer linkage issues [i](#)

There are no chain breaks in this entry.

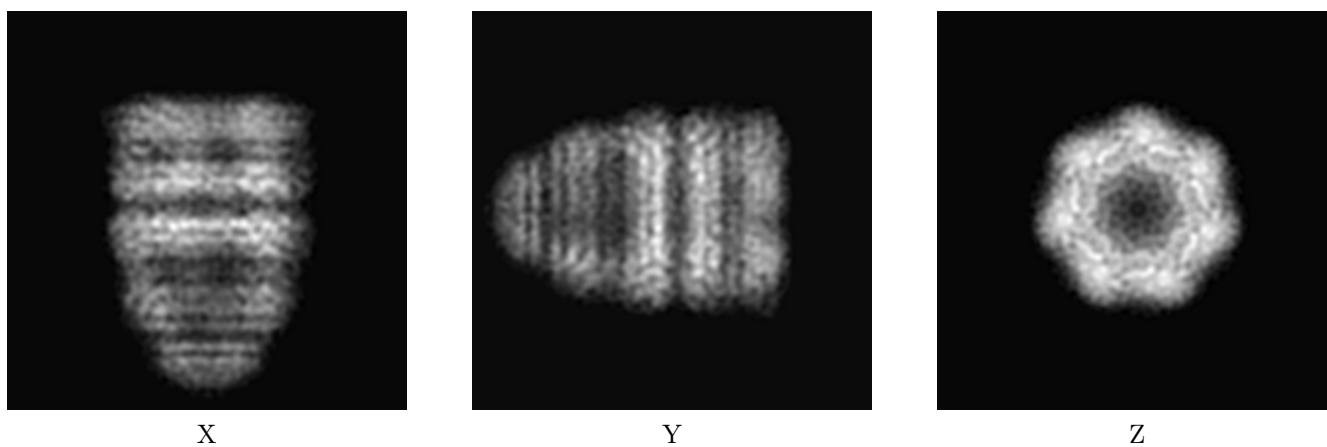
6 Map visualisation [i](#)

This section contains visualisations of the EMDB entry EMD-1180. These allow visual inspection of the internal detail of the map and identification of artifacts.

No raw map or half-maps were deposited for this entry and therefore no images, graphs, etc. pertaining to the raw map can be shown.

6.1 Orthogonal projections [i](#)

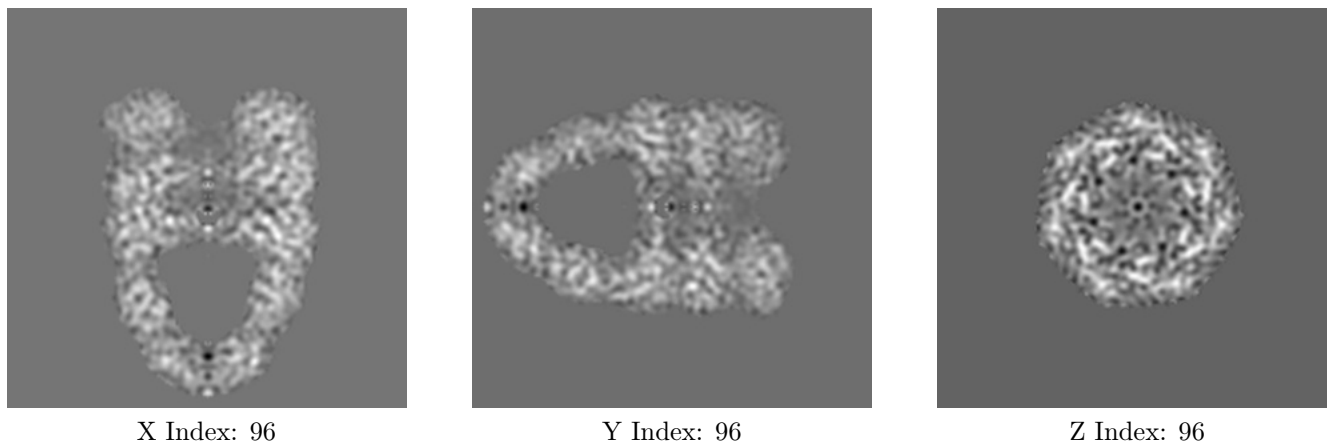
6.1.1 Primary map



The images above show the map projected in three orthogonal directions.

6.2 Central slices [i](#)

6.2.1 Primary map



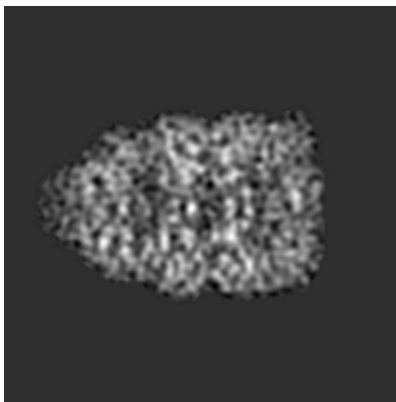
The images above show central slices of the map in three orthogonal directions.

6.3 Largest variance slices [\(i\)](#)

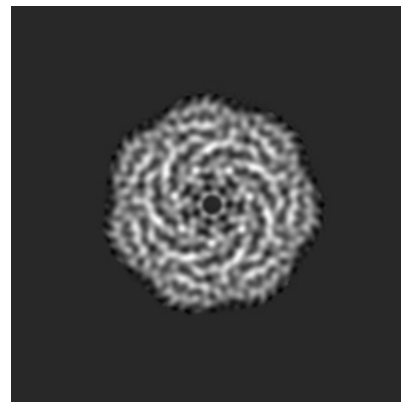
6.3.1 Primary map



X Index: 73



Y Index: 123

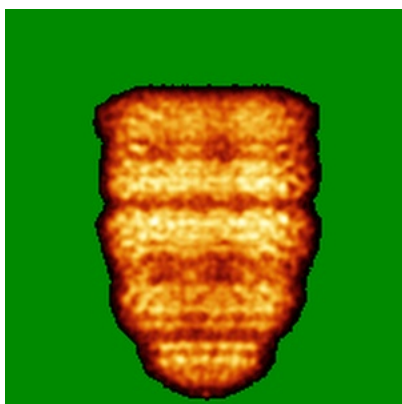


Z Index: 89

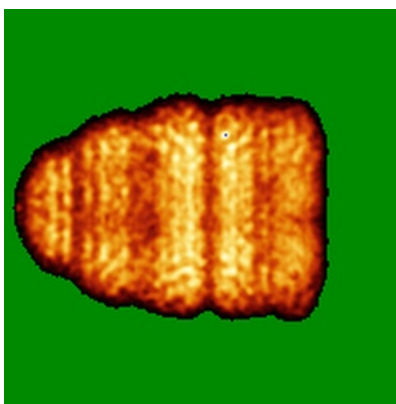
The images above show the largest variance slices of the map in three orthogonal directions.

6.4 Orthogonal standard-deviation projections (False-color) [\(i\)](#)

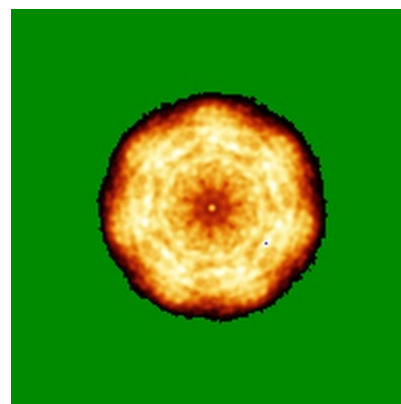
6.4.1 Primary map



X



Y

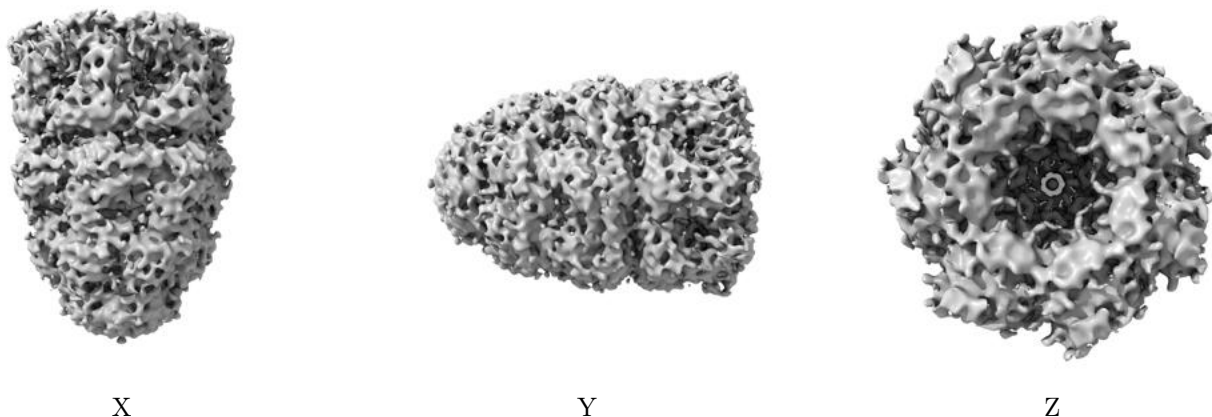


Z

The images above show the map standard deviation projections with false color in three orthogonal directions. Minimum values are shown in green, max in blue, and dark to light orange shades represent small to large values respectively.

6.5 Orthogonal surface views [i](#)

6.5.1 Primary map



The images above show the 3D surface view of the map at the recommended contour level 0.608. These images, in conjunction with the slice images, may facilitate assessment of whether an appropriate contour level has been provided.

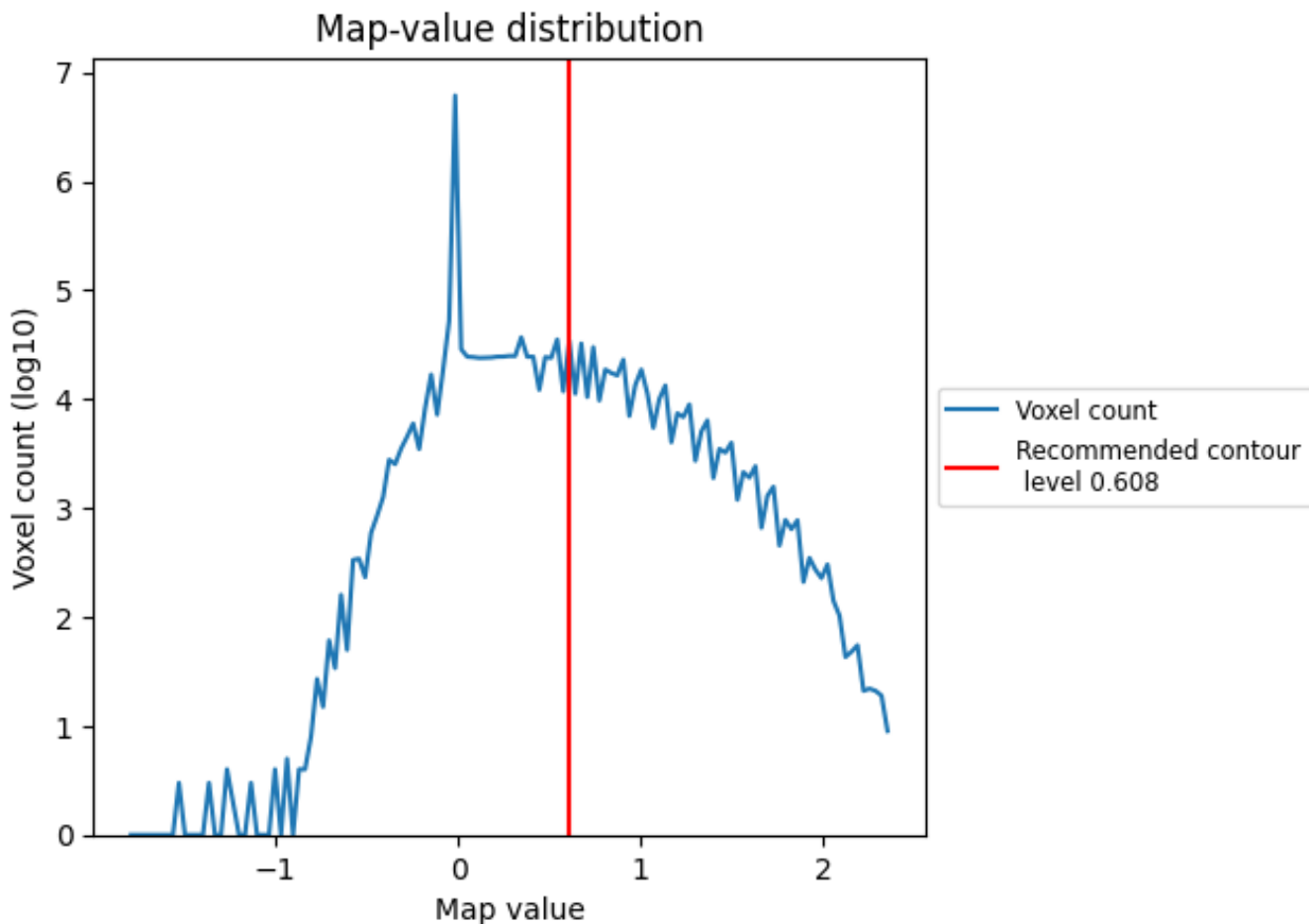
6.6 Mask visualisation [i](#)

This section was not generated. No masks/segmentation were deposited.

7 Map analysis [i](#)

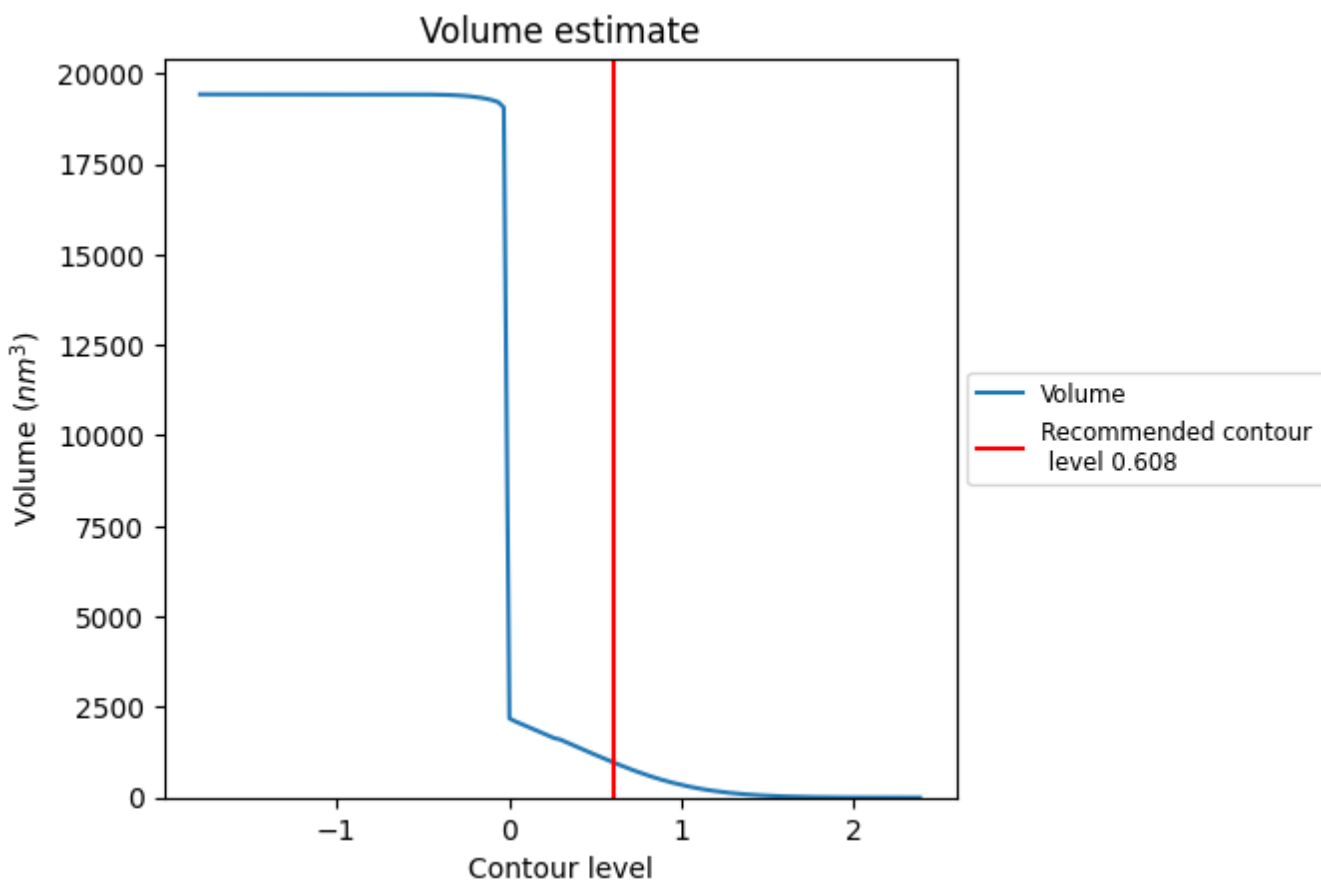
This section contains the results of statistical analysis of the map.

7.1 Map-value distribution [i](#)



The map-value distribution is plotted in 128 intervals along the x-axis. The y-axis is logarithmic. A spike in this graph at zero usually indicates that the volume has been masked.

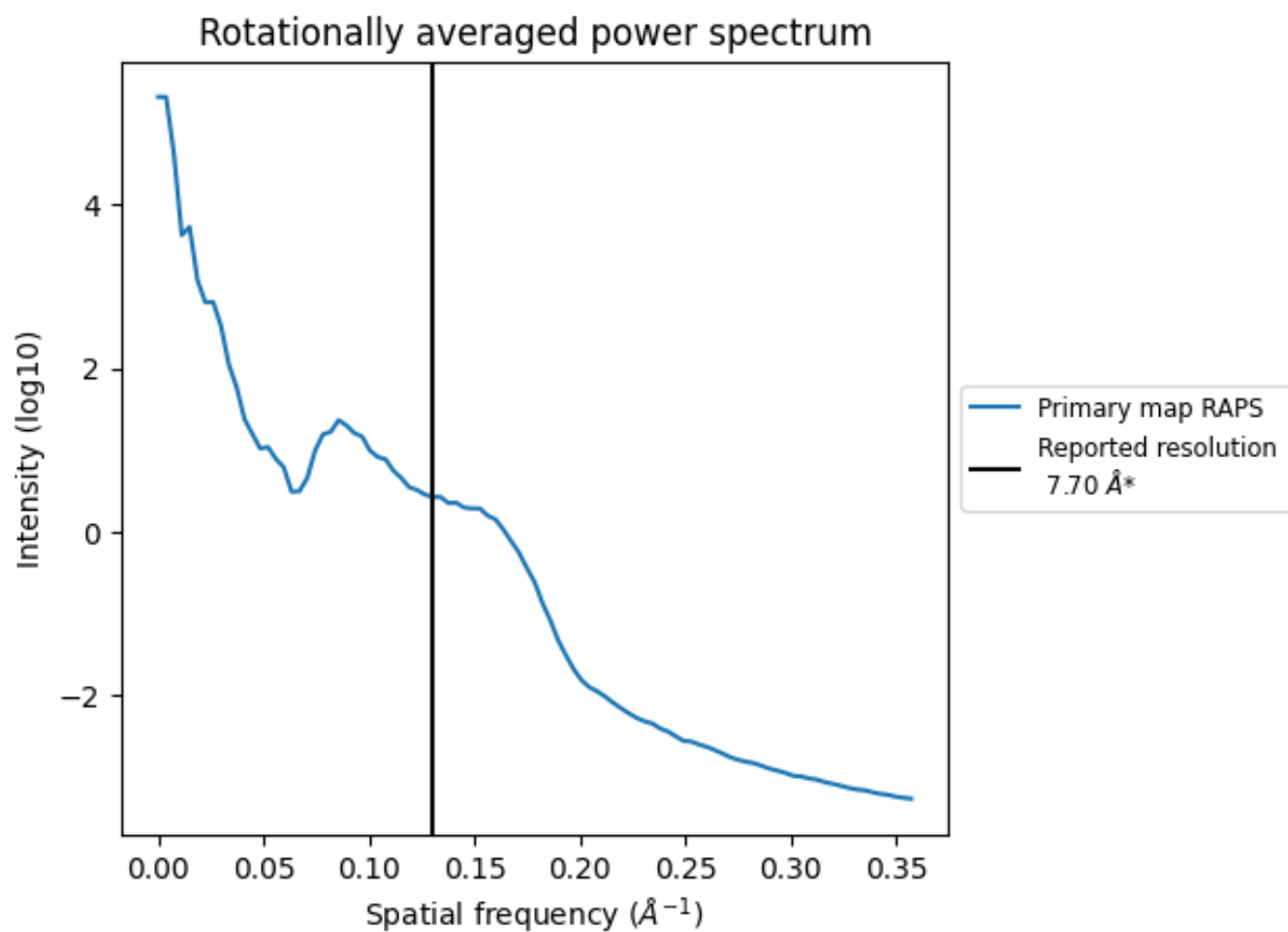
7.2 Volume estimate [i](#)



The volume at the recommended contour level is 965 nm³; this corresponds to an approximate mass of 872 kDa.

The volume estimate graph shows how the enclosed volume varies with the contour level. The recommended contour level is shown as a vertical line and the intersection between the line and the curve gives the volume of the enclosed surface at the given level.

7.3 Rotationally averaged power spectrum [i](#)



*Reported resolution corresponds to spatial frequency of 0.130\AA^{-1}

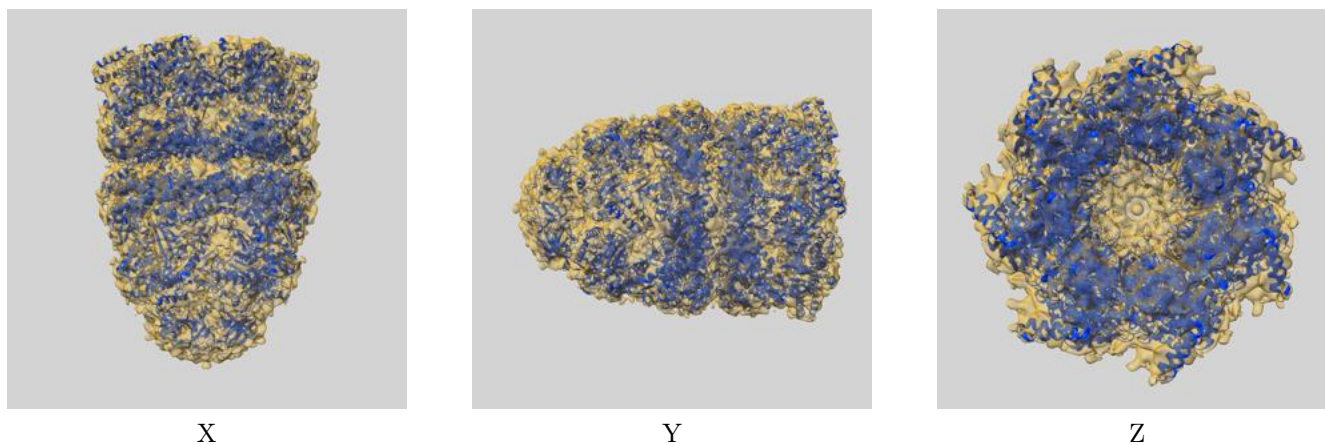
8 Fourier-Shell correlation

This section was not generated. No FSC curve or half-maps provided.

9 Map-model fit [i](#)

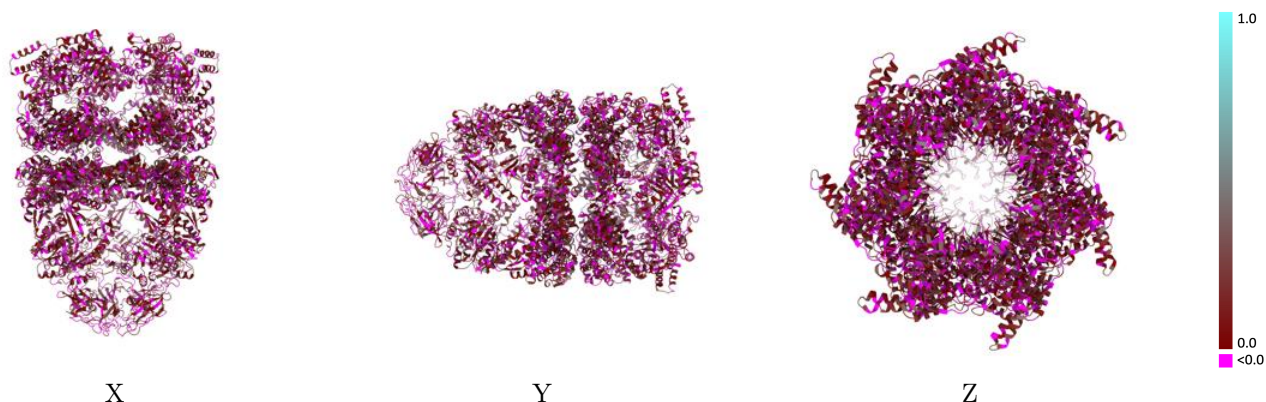
This section contains information regarding the fit between EMDB map EMD-1180 and PDB model 2C7C. Per-residue inclusion information can be found in section 3 on page 6.

9.1 Map-model overlay [i](#)



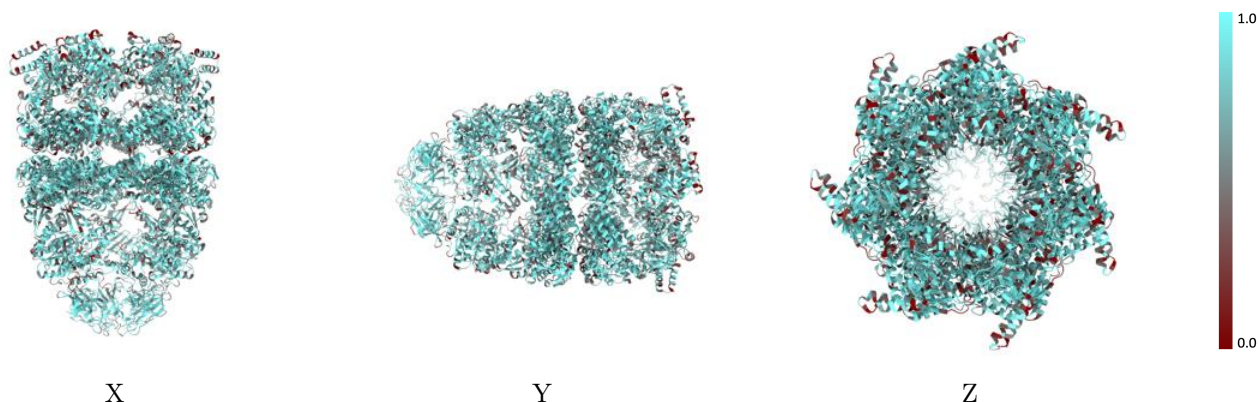
The images above show the 3D surface view of the map at the recommended contour level 0.608 at 50% transparency in yellow overlaid with a ribbon representation of the model coloured in blue. These images allow for the visual assessment of the quality of fit between the atomic model and the map.

9.2 Q-score mapped to coordinate model [i](#)



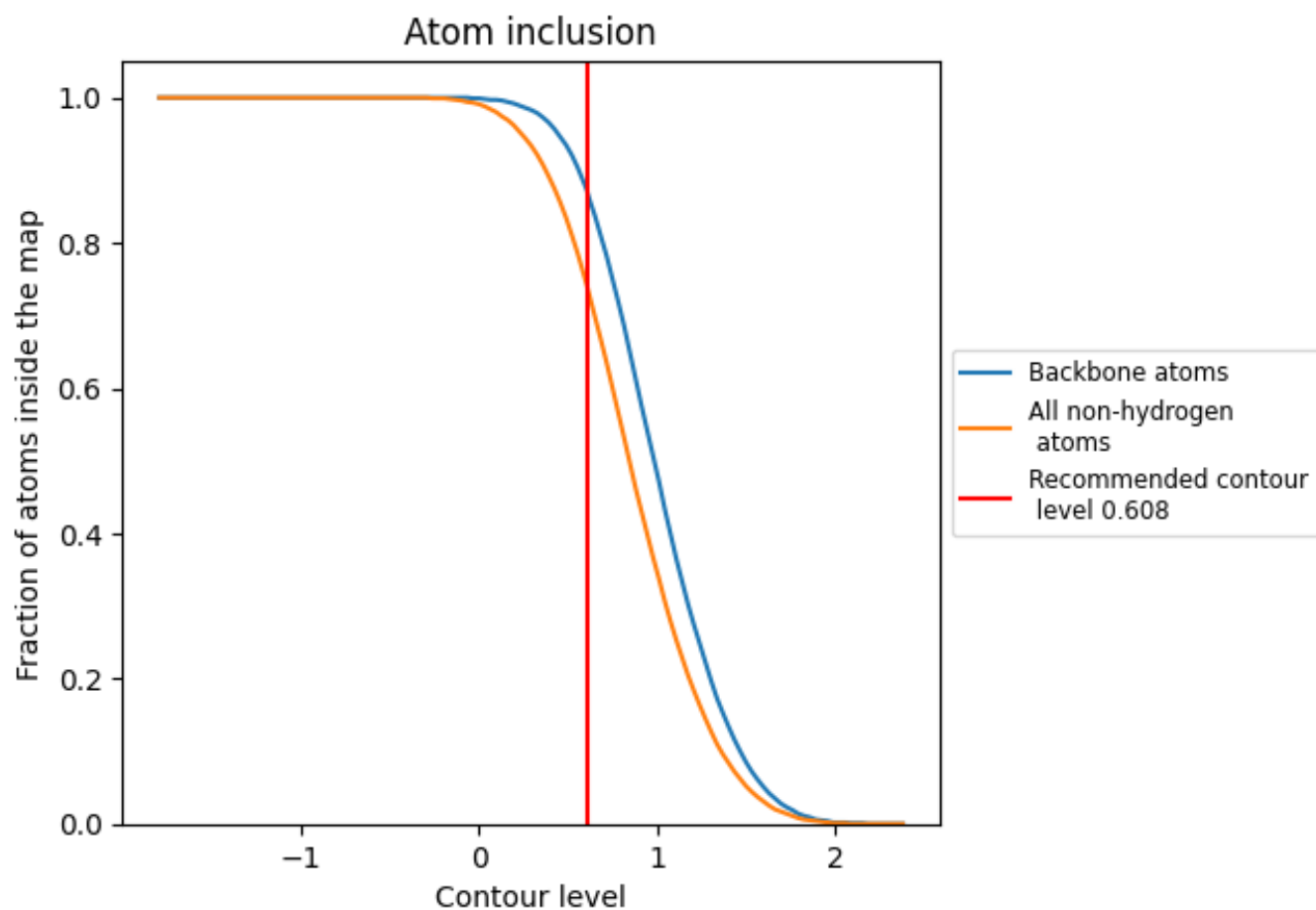
The images above show the model with each residue coloured according to its Q-score. This shows their resolvability in the map with higher Q-score values reflecting better resolvability. Please note: Q-score is calculating the resolvability of atoms, and thus high values are only expected at resolutions at which atoms can be resolved. Low Q-score values may therefore be expected for many entries.

9.3 Atom inclusion mapped to coordinate model [i](#)



The images above show the model with each residue coloured according to its atom inclusion. This shows to what extent they are inside the map at the recommended contour level (0.608).













































9.4 Atom inclusion [i](#)



At the recommended contour level, 87% of all backbone atoms, 74% of all non-hydrogen atoms, are inside the map.

9.5 Map-model fit summary

The table lists the average atom inclusion at the recommended contour level (0.608) and Q-score for the entire model and for each chain.

Chain	Atom inclusion	Q-score
All	 0.7420	 0.0900
A	 0.7580	 0.1060
B	 0.7520	 0.1000
C	 0.7620	 0.1060
D	 0.7580	 0.1050
E	 0.7640	 0.1020
F	 0.7650	 0.1040
G	 0.7590	 0.1020
H	 0.7270	 0.0810
I	 0.7270	 0.0790
J	 0.7150	 0.0780
K	 0.7140	 0.0800
L	 0.7200	 0.0790
M	 0.7130	 0.0780
N	 0.7220	 0.0850
O	 0.7680	 0.0780
P	 0.7790	 0.0800
Q	 0.7630	 0.0770
R	 0.7510	 0.0650
S	 0.7730	 0.0680
T	 0.7720	 0.0910
U	 0.7470	 0.0680

