



Full wwPDB X-ray Structure Validation Report ⓘ

Mar 8, 2026 – 11:46 AM UTC

PDB ID : 1CA7 / pdb_00001ca7
Title : MACROPHAGE MIGRATION INHIBITORY FACTOR (MIF) WITH HYDROXYPHENYLPYRUVATE
Authors : Lubetsky, J.B.; Lolis, E.
Deposited on : 1999-02-25
Resolution : 2.50 Å (reported)

This is a Full wwPDB X-ray Structure Validation Report for a publicly released PDB entry.

We welcome your comments at validation@mail.wwpdb.org

A user guide is available at

<https://www.wwpdb.org/validation/2017/XrayValidationReportHelp>

with specific help available everywhere you see the ⓘ symbol.

The types of validation reports are described at

<http://www.wwpdb.org/validation/2017/FAQs#types>.

The following versions of software and data (see [references ⓘ](#)) were used in the production of this report:

MolProbity : 4-5-2 with Phenix2.0
Mogul : 2022.3.0, CSD as543be (2022)
Xtrriage (Phenix) : **NOT EXECUTED**
EDS : **NOT EXECUTED**
Percentile statistics : 20250101.v01 (using entries in the PDB archive January 1st 2025)
Ideal geometry (proteins) : Engh & Huber (2001)
Ideal geometry (DNA, RNA) : Parkinson et al. (1996)
Validation Pipeline (wwPDB-VP) : 2.49

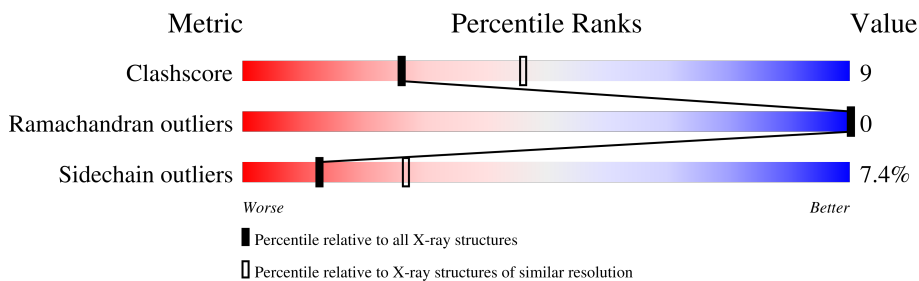
1 Overall quality at a glance

The following experimental techniques were used to determine the structure:

X-RAY DIFFRACTION

The reported resolution of this entry is 2.50 Å.

Percentile scores (ranging between 0-100) for global validation metrics of the entry are shown in the following graphic. The table shows the number of entries on which the scores are based.



Metric	Whole archive (#Entries)	Similar resolution (#Entries, resolution range(Å))
Clashscore	190562	6492 (2.50-2.50)
Ramachandran outliers	187476	6378 (2.50-2.50)
Sidechain outliers	187428	6380 (2.50-2.50)

The table below summarises the geometric issues observed across the polymeric chains and their fit to the electron density. The red, orange, yellow and green segments of the lower bar indicate the fraction of residues that contain outliers for ≥ 3 , 2, 1 and 0 types of geometric quality criteria respectively. A grey segment represents the fraction of residues that are not modelled. The numeric value for each fraction is indicated below the corresponding segment, with a dot representing fractions $\leq 5\%$.

Note EDS was not executed.

Mol	Chain	Length	Quality of chain
1	A	114	
1	B	114	
1	C	114	

The following table lists non-polymeric compounds, carbohydrate monomers and non-standard residues in protein, DNA, RNA chains that are outliers for geometric or electron-density-fit criteria:

Mol	Type	Chain	Res	Chirality	Geometry	Clashes	Electron density
2	EN1	C	701	-	-	X	-

2 Entry composition [i](#)

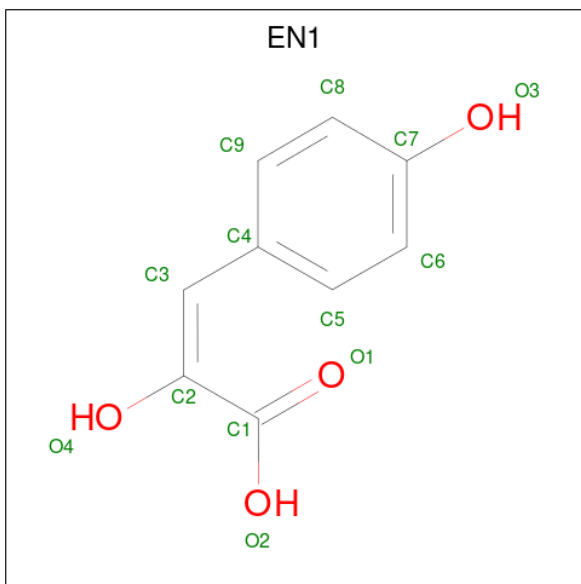
There are 3 unique types of molecules in this entry. The entry contains 2658 atoms, of which 0 are hydrogens and 0 are deuteriums.

In the tables below, the ZeroOcc column contains the number of atoms modelled with zero occupancy, the AltConf column contains the number of residues with at least one atom in alternate conformation and the Trace column contains the number of residues modelled with at most 2 atoms.

- Molecule 1 is a protein called PROTEIN (MACROPHAGE MIGRATION INHIBITORY FACTOR).

Mol	Chain	Residues	Atoms					ZeroOcc	AltConf	Trace
			Total	C	N	O	S			
1	A	114	Total 867	C 548	N 151	O 162	S 6	0	0	0
1	B	114	Total 867	C 548	N 151	O 162	S 6	0	0	0
1	C	114	Total 867	C 548	N 151	O 162	S 6	0	0	0

- Molecule 2 is (2E)-2-hydroxy-3-(4-hydroxyphenyl)prop-2-enoic acid (CCD ID: EN1) (formula: C₉H₈O₄).



Mol	Chain	Residues	Atoms			ZeroOcc	AltConf
			Total	C	O		
2	A	1	Total 13	C 9	O 4	0	0
2	B	1	Total 13	C 9	O 4	0	0

Continued on next page...

Continued from previous page...

Mol	Chain	Residues	Atoms			ZeroOcc	AltConf
2	C	1	Total	C	O	0	0
			13	9	4		

- Molecule 3 is water.


Mol	Chain	Residues	Atoms		ZeroOcc	AltConf
3	A	6	Total	O	0	0
			6	6		
3	B	6	Total	O	0	0
			6	6		
3	C	6	Total	O	0	0
			6	6		

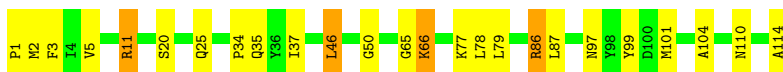
3 Residue-property plots [i](#)

These plots are drawn for all protein, RNA, DNA and oligosaccharide chains in the entry. The first graphic for a chain summarises the proportions of the various outlier classes displayed in the second graphic. The second graphic shows the sequence view annotated by issues in geometry. Residues are color-coded according to the number of geometric quality criteria for which they contain at least one outlier: green = 0, yellow = 1, orange = 2 and red = 3 or more. Stretches of 2 or more consecutive residues without any outlier are shown as a green connector. Residues present in the sample, but not in the model, are shown in grey.


Note EDS was not executed.

- Molecule 1: PROTEIN (MACROPHAGE MIGRATION INHIBITORY FACTOR)

Chain A:  78% 18%



- Molecule 1: PROTEIN (MACROPHAGE MIGRATION INHIBITORY FACTOR)

Chain B:  78% 18%



- Molecule 1: PROTEIN (MACROPHAGE MIGRATION INHIBITORY FACTOR)

Chain C:  76% 22%



4 Data and refinement statistics

Xtrriage (Phenix) and EDS were not executed - this section is therefore incomplete.

Property	Value	Source
Space group	P 21 21 21	Depositor
Cell constants a, b, c, α , β , γ	67.85Å 68.04Å 87.93Å 90.00° 90.00° 90.00°	Depositor
Resolution (Å)	20.00 – 2.50	Depositor
% Data completeness (in resolution range)	95.2 (20.00-2.50)	Depositor
R_{merge}	(Not available)	Depositor
R_{sym}	0.09	Depositor
Refinement program	X-PLOR	Depositor
R, R_{free}	0.200 , 0.263	Depositor
Estimated twinning fraction	No twinning to report.	Xtrriage
Total number of atoms	2658	wwPDB-VP
Average B, all atoms (Å ²)	27.0	wwPDB-VP

5 Model quality [i](#)

5.1 Standard geometry [i](#)

Bond lengths and bond angles in the following residue types are not validated in this section: EN1

The Z score for a bond length (or angle) is the number of standard deviations the observed value is removed from the expected value. A bond length (or angle) with $|Z| > 5$ is considered an outlier worth inspection. RMSZ is the root-mean-square of all Z scores of the bond lengths (or angles).

Mol	Chain	Bond lengths		Bond angles	
		RMSZ	# Z >5	RMSZ	# Z >5
1	A	0.57	0/887	0.93	1/1205 (0.1%)
1	B	0.59	0/887	0.93	1/1205 (0.1%)
1	C	0.61	0/887	0.92	0/1205
All	All	0.59	0/2661	0.93	2/3615 (0.1%)

There are no bond length outliers.

All (2) bond angle outliers are listed below:

Mol	Chain	Res	Type	Atoms	Z	Observed(°)	Ideal(°)
1	A	86	ARG	N-CA-C	5.47	117.33	111.36
1	B	86	ARG	N-CA-C	5.21	117.86	111.82

There are no chirality outliers.

There are no planarity outliers.

5.2 Too-close contacts [i](#)

In the following table, the Non-H and H(model) columns list the number of non-hydrogen atoms and hydrogen atoms in the chain respectively. The H(added) column lists the number of hydrogen atoms added and optimized by MolProbity. The Clashes column lists the number of clashes within the asymmetric unit, whereas Symm-Clashes lists symmetry-related clashes.

Mol	Chain	Non-H	H(model)	H(added)	Clashes	Symm-Clashes
1	A	867	0	858	19	0
1	B	867	0	858	19	0
1	C	867	0	858	24	0
2	A	13	0	6	2	0
2	B	13	0	6	2	0
2	C	13	0	6	7	0

Continued on next page...

Continued from previous page...

Mol	Chain	Non-H	H(model)	H(added)	Clashes	Symm-Clashes
3	A	6	0	0	0	0
3	B	6	0	0	0	0
3	C	6	0	0	0	0
All	All	2658	0	2592	49	0

The all-atom clashscore is defined as the number of clashes found per 1000 atoms (including hydrogen atoms). The all-atom clashscore for this structure is 9.

All (49) close contacts within the same asymmetric unit are listed below, sorted by their clash magnitude.

Atom-1	Atom-2	Interatomic distance (Å)	Clash overlap (Å)
1:C:2:MET:HE3	2:C:701:EN1:H8	1.50	0.93
1:C:86:ARG:HH11	1:C:86:ARG:HG2	1.59	0.68
1:A:86:ARG:HG2	1:A:86:ARG:HH11	1.63	0.64
1:B:86:ARG:HH11	1:B:86:ARG:HG2	1.61	0.64
1:B:95:TYR:CE2	2:C:701:EN1:H9	2.36	0.60
1:A:97:ASN:HD22	1:B:101:MET:HE2	1.72	0.55
1:A:97:ASN:ND2	1:B:101:MET:HE2	2.23	0.54
1:C:3:PHE:CE2	1:C:5:VAL:HG22	2.43	0.53
1:C:64:ILE:HG13	2:C:701:EN1:H5	1.92	0.52
1:C:1:PRO:H3	2:C:701:EN1:C2	2.22	0.52
1:B:2:MET:HE3	2:B:601:EN1:H8	1.92	0.52
1:B:3:PHE:CE2	1:B:5:VAL:HG22	2.45	0.52
1:B:64:ILE:HG13	2:B:601:EN1:H5	1.93	0.51
1:B:97:ASN:HD22	1:C:101:MET:HE2	1.76	0.51
1:C:2:MET:HB2	2:C:701:EN1:C8	2.42	0.50
1:B:65:GLY:O	1:B:66:LYS:HB2	2.12	0.50
1:A:11:ARG:NH2	1:C:46:LEU:HD11	2.26	0.49
1:B:97:ASN:ND2	1:C:101:MET:HE2	2.28	0.48
1:B:77:LYS:HE2	1:B:77:LYS:HB2	1.67	0.47
1:A:25:GLN:HE21	1:A:78:LEU:HD11	1.79	0.47
1:B:25:GLN:HE21	1:B:78:LEU:HD11	1.79	0.47
1:A:3:PHE:CE2	1:A:5:VAL:HG22	2.50	0.46
1:C:25:GLN:HE21	1:C:78:LEU:HD11	1.80	0.46
1:A:65:GLY:O	1:A:66:LYS:HB2	2.16	0.45
1:A:77:LYS:HB2	1:A:77:LYS:HE2	1.70	0.45
1:A:110:ASN:HB3	1:C:77:LYS:HD3	1.98	0.45
1:C:1:PRO:H3	2:C:701:EN1:C3	2.29	0.45
1:A:1:PRO:HD2	1:A:37:ILE:HD13	1.97	0.45
1:A:101:MET:HE2	1:C:97:ASN:HD22	1.81	0.44
1:C:65:GLY:O	1:C:66:LYS:HB2	2.15	0.44

Continued on next page...

Continued from previous page...

Atom-1	Atom-2	Interatomic distance (Å)	Clash overlap (Å)
1:A:2:MET:HE3	2:A:501:EN1:H8	1.99	0.44
1:A:34:PRO:O	1:C:50:GLY:HA2	2.18	0.44
1:A:104:ALA:HA	1:A:114:ALA:HB2	1.99	0.44
1:B:1:PRO:HD2	1:B:37:ILE:HD13	1.98	0.44
1:A:46:LEU:HD11	1:B:11:ARG:NH2	2.33	0.44
1:B:46:LEU:HD11	1:C:11:ARG:NH2	2.33	0.44
1:C:1:PRO:HD2	1:C:37:ILE:HD13	2.00	0.43
1:C:104:ALA:HA	1:C:114:ALA:HB2	1.99	0.43
1:B:104:ALA:HA	1:B:114:ALA:HB2	2.01	0.43
1:A:101:MET:HE2	1:C:97:ASN:ND2	2.34	0.42
1:C:80:CYS:HB3	1:C:91:PRO:HB3	2.01	0.42
2:A:501:EN1:H9	1:C:95:TYR:CE1	2.55	0.42
1:C:77:LYS:HB2	1:C:77:LYS:HE2	1.68	0.42
1:C:86:ARG:HG2	1:C:86:ARG:NH1	2.30	0.42
1:C:2:MET:HE3	2:C:701:EN1:C8	2.35	0.41
1:A:50:GLY:HA2	1:B:34:PRO:O	2.20	0.41
1:B:86:ARG:HG2	1:B:86:ARG:NH1	2.32	0.41
1:A:77:LYS:HD3	1:B:110:ASN:HB3	2.02	0.41
1:A:97:ASN:HB3	1:A:99:TYR:CE1	2.56	0.41

There are no symmetry-related clashes.

5.3 Torsion angles [i](#)

5.3.1 Protein backbone [i](#)

In the following table, the Percentiles column shows the percent Ramachandran outliers of the chain as a percentile score with respect to all X-ray entries followed by that with respect to entries of similar resolution.

The Analysed column shows the number of residues for which the backbone conformation was analysed, and the total number of residues.

Mol	Chain	Analysed	Favoured	Allowed	Outliers	Percentiles	
1	A	112/114 (98%)	110 (98%)	2 (2%)	0	100	100
1	B	112/114 (98%)	109 (97%)	3 (3%)	0	100	100
1	C	112/114 (98%)	110 (98%)	2 (2%)	0	100	100
All	All	336/342 (98%)	329 (98%)	7 (2%)	0	100	100

There are no Ramachandran outliers to report.

5.3.2 Protein sidechains [i](#)

In the following table, the Percentiles column shows the percent sidechain outliers of the chain as a percentile score with respect to all X-ray entries followed by that with respect to entries of similar resolution.

The Analysed column shows the number of residues for which the sidechain conformation was analysed, and the total number of residues.

Mol	Chain	Analysed	Rotameric	Outliers	Percentiles	
1	A	94/94 (100%)	87 (93%)	7 (7%)	13	27
1	B	94/94 (100%)	87 (93%)	7 (7%)	13	27
1	C	94/94 (100%)	87 (93%)	7 (7%)	13	27
All	All	282/282 (100%)	261 (93%)	21 (7%)	13	27

All (21) residues with a non-rotameric sidechain are listed below:

Mol	Chain	Res	Type
1	A	11	ARG
1	A	20	SER
1	A	35	GLN
1	A	46	LEU
1	A	66	LYS
1	A	79	LEU
1	A	87	LEU
1	B	11	ARG
1	B	20	SER
1	B	35	GLN
1	B	46	LEU
1	B	66	LYS
1	B	79	LEU
1	B	87	LEU
1	C	20	SER
1	C	35	GLN
1	C	46	LEU
1	C	59	CYS
1	C	66	LYS
1	C	79	LEU
1	C	87	LEU

Sometimes sidechains can be flipped to improve hydrogen bonding and reduce clashes. All (15) such sidechains are listed below:

Mol	Chain	Res	Type
1	A	24	GLN
1	A	25	GLN
1	A	71	GLN
1	A	97	ASN
1	A	109	ASN
1	B	24	GLN
1	B	25	GLN
1	B	45	GLN
1	B	97	ASN
1	C	6	ASN
1	C	24	GLN
1	C	25	GLN
1	C	45	GLN
1	C	71	GLN
1	C	97	ASN

5.3.3 RNA [i](#)

There are no RNA molecules in this entry.

5.4 Non-standard residues in protein, DNA, RNA chains [i](#)

There are no non-standard protein/DNA/RNA residues in this entry.

5.5 Carbohydrates [i](#)

There are no oligosaccharides in this entry.

5.6 Ligand geometry [i](#)

3 ligands are modelled in this entry.

In the following table, the Counts columns list the number of bonds (or angles) for which Mogul statistics could be retrieved, the number of bonds (or angles) that are observed in the model and the number of bonds (or angles) that are defined in the Chemical Component Dictionary. The Link column lists molecule types, if any, to which the group is linked. The Z score for a bond length (or angle) is the number of standard deviations the observed value is removed from the expected value. A bond length (or angle) with $|Z| > 2$ is considered an outlier worth inspection. RMSZ is the root-mean-square of all Z scores of the bond lengths (or angles).

Mol	Type	Chain	Res	Link	Bond lengths			Bond angles		
					Counts	RMSZ	# Z > 2	Counts	RMSZ	# Z > 2
2	EN1	A	501	-	13,13,13	1.62	3 (23%)	15,17,17	3.58	3 (20%)
2	EN1	B	601	-	13,13,13	1.55	3 (23%)	15,17,17	3.57	3 (20%)
2	EN1	C	701	-	13,13,13	1.38	2 (15%)	15,17,17	3.16	3 (20%)

In the following table, the Chirals column lists the number of chiral outliers, the number of chiral centers analysed, the number of these observed in the model and the number defined in the Chemical Component Dictionary. Similar counts are reported in the Torsion and Rings columns. '-' means no outliers of that kind were identified.

Mol	Type	Chain	Res	Link	Chirals	Torsions	Rings
2	EN1	A	501	-	-	1/8/8/8	0/1/1/1
2	EN1	B	601	-	-	1/8/8/8	0/1/1/1
2	EN1	C	701	-	-	3/8/8/8	0/1/1/1

All (8) bond length outliers are listed below:

Mol	Chain	Res	Type	Atoms	Z	Observed(Å)	Ideal(Å)
2	A	501	EN1	C4-C3	3.95	1.54	1.46
2	B	601	EN1	C4-C3	3.78	1.53	1.46
2	C	701	EN1	C4-C3	3.62	1.53	1.46
2	A	501	EN1	C2-C1	3.04	1.53	1.48
2	B	601	EN1	C2-C1	2.96	1.53	1.48
2	C	701	EN1	O2-C1	-2.14	1.24	1.30
2	B	601	EN1	O2-C1	-2.11	1.24	1.30
2	A	501	EN1	O2-C1	-2.02	1.25	1.30

All (9) bond angle outliers are listed below:

Mol	Chain	Res	Type	Atoms	Z	Observed(°)	Ideal(°)
2	A	501	EN1	O4-C2-C3	-12.52	114.31	123.01
2	B	601	EN1	O4-C2-C3	-12.49	114.33	123.01
2	C	701	EN1	O4-C2-C3	-10.74	115.55	123.01
2	B	601	EN1	O4-C2-C1	-4.90	109.52	114.17
2	A	501	EN1	O4-C2-C1	-4.77	109.64	114.17
2	C	701	EN1	O4-C2-C1	-3.97	110.40	114.17
2	C	701	EN1	O2-C1-C2	3.74	119.95	115.78
2	A	501	EN1	O2-C1-C2	3.20	119.34	115.78
2	B	601	EN1	O2-C1-C2	2.94	119.06	115.78

There are no chirality outliers.

All (5) torsion outliers are listed below:

Mol	Chain	Res	Type	Atoms
2	A	501	EN1	O4-C2-C3-C4
2	B	601	EN1	O4-C2-C3-C4
2	C	701	EN1	O4-C2-C3-C4
2	C	701	EN1	C2-C3-C4-C5
2	C	701	EN1	C2-C3-C4-C9

There are no ring outliers.

3 monomers are involved in 11 short contacts:

Mol	Chain	Res	Type	Clashes	Symm-Clashes
2	A	501	EN1	2	0
2	B	601	EN1	2	0
2	C	701	EN1	7	0

5.7 Other polymers [i](#)

There are no such residues in this entry.

5.8 Polymer linkage issues [i](#)

There are no chain breaks in this entry.

6 Fit of model and data

6.1 Protein, DNA and RNA chains

EDS was not executed - this section is therefore empty.

6.2 Non-standard residues in protein, DNA, RNA chains

EDS was not executed - this section is therefore empty.

6.3 Carbohydrates

EDS was not executed - this section is therefore empty.

6.4 Ligands

EDS was not executed - this section is therefore empty.

6.5 Other polymers

EDS was not executed - this section is therefore empty.