



Full wwPDB X-ray Structure Validation Report ⓘ

Mar 1, 2026 – 05:16 PM UTC

PDB ID : 2CB1 / pdb_00002cb1
Title : Crystal Structure of O-acetyl Homoserine Sulphydrylase From Thermus Thermophilus HB8,OAH2.
Authors : Imagawa, T.; Utsunomiya, H.; Tsuge, H.; Ebihara, A.; Kanagawa, M.; Nakagawa, N.; Kuroishi, C.; Agari, Y.; Kuramitsu, S.; Yokoyama, S.
Deposited on : 2005-12-28
Resolution : 2.00 Å(reported)

This is a Full wwPDB X-ray Structure Validation Report for a publicly released PDB entry.

We welcome your comments at validation@mail.wwpdb.org

A user guide is available at

<https://www.wwpdb.org/validation/2017/XrayValidationReportHelp>

with specific help available everywhere you see the ⓘ symbol.

The types of validation reports are described at

<http://www.wwpdb.org/validation/2017/FAQs#types>.

The following versions of software and data (see [references ⓘ](#)) were used in the production of this report:

MolProbity : 4-5-2 with Phenix2.0
Mogul : 2022.3.0, CSD as543be (2022)
Xtriage (Phenix) : 2.0
EDS : 3.0
Percentile statistics : 20250101.v01 (using entries in the PDB archive January 1st 2025)
CCP4 : 9.0.010 (Gargrove)
Density-Fitness : 1.0.12
Ideal geometry (proteins) : Engh & Huber (2001)
Ideal geometry (DNA, RNA) : Parkinson et al. (1996)
Validation Pipeline (wwPDB-VP) : 2.49

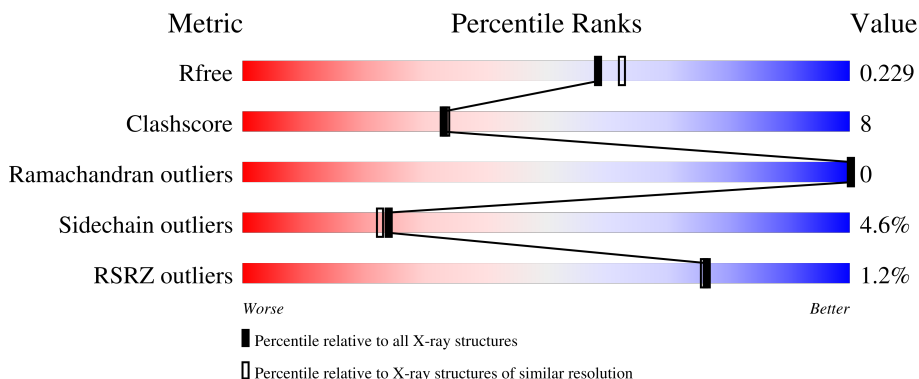
1 Overall quality at a glance

The following experimental techniques were used to determine the structure:

X-RAY DIFFRACTION

The reported resolution of this entry is 2.00 Å.

Percentile scores (ranging between 0-100) for global validation metrics of the entry are shown in the following graphic. The table shows the number of entries on which the scores are based.



Metric	Whole archive (#Entries)	Similar resolution (#Entries, resolution range(Å))
R_{free}	180053	10052 (2.00-2.00)
Clashscore	190562	11152 (2.00-2.00)
Ramachandran outliers	187476	11031 (2.00-2.00)
Sidechain outliers	187428	11029 (2.00-2.00)
RSRZ outliers	180081	10067 (2.00-2.00)

The table below summarises the geometric issues observed across the polymeric chains and their fit to the electron density. The red, orange, yellow and green segments of the lower bar indicate the fraction of residues that contain outliers for ≥ 3 , 2, 1 and 0 types of geometric quality criteria respectively. A grey segment represents the fraction of residues that are not modelled. The numeric value for each fraction is indicated below the corresponding segment, with a dot representing fractions $\leq 5\%$. The upper red bar (where present) indicates the fraction of residues that have poor fit to the electron density. The numeric value is given above the bar.

Mol	Chain	Length	Quality of chain
1	A	412	

2 Entry composition [i](#)

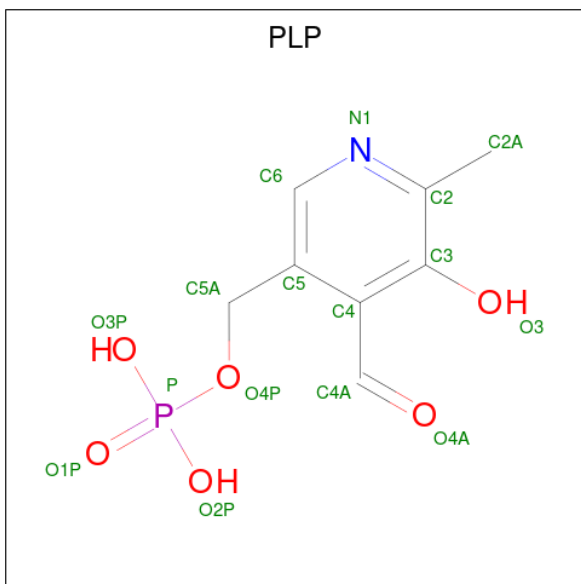
There are 3 unique types of molecules in this entry. The entry contains 3221 atoms, of which 0 are hydrogens and 0 are deuteriums.

In the tables below, the ZeroOcc column contains the number of atoms modelled with zero occupancy, the AltConf column contains the number of residues with at least one atom in alternate conformation and the Trace column contains the number of residues modelled with at most 2 atoms.

- Molecule 1 is a protein called O-ACETYL HOMOSERINE SULFHYDRYLASE.

Mol	Chain	Residues	Atoms					ZeroOcc	AltConf	Trace
			Total	C	N	O	S			
1	A	405	3059	1957	536	559	7	0	0	1

- Molecule 2 is PYRIDOXAL-5'-PHOSPHATE (CCD ID: PLP) (formula: C₈H₁₀NO₆P).



Mol	Chain	Residues	Atoms					ZeroOcc	AltConf
			Total	C	N	O	P		
2	A	1	15	8	1	5	1	0	0

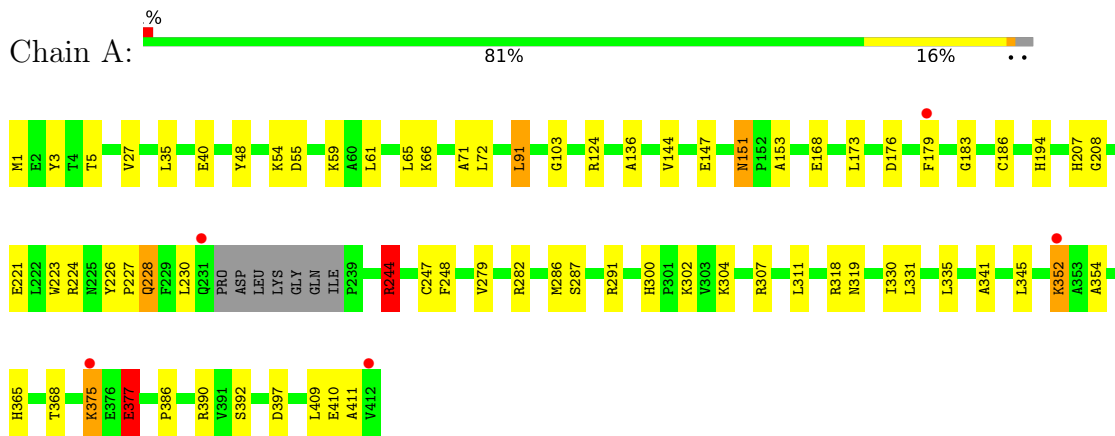
- Molecule 3 is water.

Mol	Chain	Residues	Atoms		ZeroOcc	AltConf
3	A	147	Total	O	0	0
			147	147		

3 Residue-property plots [i](#)

These plots are drawn for all protein, RNA, DNA and oligosaccharide chains in the entry. The first graphic for a chain summarises the proportions of the various outlier classes displayed in the second graphic. The second graphic shows the sequence view annotated by issues in geometry and electron density. Residues are color-coded according to the number of geometric quality criteria for which they contain at least one outlier: green = 0, yellow = 1, orange = 2 and red = 3 or more. A red dot above a residue indicates a poor fit to the electron density ($RSRZ > 2$). Stretches of 2 or more consecutive residues without any outlier are shown as a green connector. Residues present in the sample, but not in the model, are shown in grey.

- Molecule 1: O-ACETYL HOMOSERINE SULFHYDRYLASE



4 Data and refinement statistics

Property	Value	Source
Space group	I 2 2 2	Depositor
Cell constants a, b, c, α , β , γ	55.99Å 86.39Å 156.14Å 90.00° 90.00° 90.00°	Depositor
Resolution (Å)	78.09 – 2.00 78.07 – 2.00	Depositor EDS
% Data completeness (in resolution range)	99.2 (78.09-2.00) 99.2 (78.07-2.00)	Depositor EDS
R_{merge}	0.05	Depositor
R_{sym}	(Not available)	Depositor
$\langle I/\sigma(I) \rangle$ ¹	4.79 (at 2.00Å)	Xtrriage
Refinement program	REFMAC 5.2.0005	Depositor
R, R_{free}	0.187 , 0.234 0.186 , 0.229	Depositor DCC
R_{free} test set	1314 reflections (5.08%)	wwPDB-VP
Wilson B-factor (Å ²)	23.7	Xtrriage
Anisotropy	0.794	Xtrriage
Bulk solvent k_{sol} (e/Å ³), B_{sol} (Å ²)	0.34 , 31.7	EDS
L-test for twinning ²	$\langle L \rangle = 0.50$, $\langle L^2 \rangle = 0.34$	Xtrriage
Estimated twinning fraction	No twinning to report.	Xtrriage
F_o, F_c correlation	0.95	EDS
Total number of atoms	3221	wwPDB-VP
Average B, all atoms (Å ²)	25.0	wwPDB-VP

Xtrriage's analysis on translational NCS is as follows: *The largest off-origin peak in the Patterson function is 5.80% of the height of the origin peak. No significant pseudotranslation is detected.*

¹Intensities estimated from amplitudes.

²Theoretical values of $\langle |L| \rangle$, $\langle L^2 \rangle$ for acentric reflections are 0.5, 0.333 respectively for untwinned datasets, and 0.375, 0.2 for perfectly twinned datasets.

5 Model quality [i](#)

5.1 Standard geometry [i](#)

Bond lengths and bond angles in the following residue types are not validated in this section: PLP

The Z score for a bond length (or angle) is the number of standard deviations the observed value is removed from the expected value. A bond length (or angle) with $|Z| > 5$ is considered an outlier worth inspection. RMSZ is the root-mean-square of all Z scores of the bond lengths (or angles).

Mol	Chain	Bond lengths		Bond angles	
		RMSZ	# $ Z > 5$	RMSZ	# $ Z > 5$
1	A	1.48	13/3120 (0.4%)	1.22	8/4245 (0.2%)

Chiral center outliers are detected by calculating the chiral volume of a chiral center and verifying if the center is modelled as a planar moiety or with the opposite hand. A planarity outlier is detected by checking planarity of atoms in a peptide group, atoms in a mainchain group or atoms of a sidechain that are expected to be planar.

Mol	Chain	#Chirality outliers	#Planarity outliers
1	A	0	1

All (13) bond length outliers are listed below:

Mol	Chain	Res	Type	Atoms	Z	Observed(Å)	Ideal(Å)
1	A	411	ALA	C-N	-6.49	1.24	1.33
1	A	244	ARG	C-O	-6.47	1.18	1.24
1	A	279	VAL	CA-CB	6.34	1.62	1.54
1	A	59	LYS	CE-NZ	5.93	1.67	1.49
1	A	65	LEU	C-O	-5.45	1.17	1.24
1	A	3	TYR	CA-C	5.42	1.60	1.52
1	A	151	ASN	CA-C	-5.42	1.46	1.52
1	A	153	ALA	CA-CB	5.40	1.62	1.53
1	A	354	ALA	CA-CB	5.35	1.62	1.53
1	A	244	ARG	CG-CD	5.34	1.68	1.52
1	A	61	LEU	C-O	-5.29	1.17	1.24
1	A	247	CYS	CA-C	5.29	1.59	1.52
1	A	71	ALA	CA-CB	5.11	1.61	1.53

All (8) bond angle outliers are listed below:

Mol	Chain	Res	Type	Atoms	Z	Observed(°)	Ideal(°)
1	A	397	ASP	CA-C-N	6.50	126.26	119.05
1	A	397	ASP	C-N-CA	6.50	126.26	119.05
1	A	377	GLU	CB-CA-C	-6.39	100.58	110.81
1	A	168	GLU	N-CA-C	6.19	118.03	111.28
1	A	311	LEU	CA-C-N	6.18	125.67	119.24
1	A	311	LEU	C-N-CA	6.18	125.67	119.24
1	A	151	ASN	CB-CA-C	-5.26	103.09	110.13
1	A	144	VAL	N-CA-C	-5.07	100.34	107.75

There are no chirality outliers.

All (1) planarity outliers are listed below:

Mol	Chain	Res	Type	Group
1	A	103	GLY	Peptide

5.2 Too-close contacts [i](#)

In the following table, the Non-H and H(model) columns list the number of non-hydrogen atoms and hydrogen atoms in the chain respectively. The H(added) column lists the number of hydrogen atoms added and optimized by MolProbity. The Clashes column lists the number of clashes within the asymmetric unit, whereas Symm-Clashes lists symmetry-related clashes.

Mol	Chain	Non-H	H(model)	H(added)	Clashes	Symm-Clashes
1	A	3059	0	3117	48	0
2	A	15	0	6	0	0
3	A	147	0	0	0	0
All	All	3221	0	3123	48	0

The all-atom clashscore is defined as the number of clashes found per 1000 atoms (including hydrogen atoms). The all-atom clashscore for this structure is 8.

All (48) close contacts within the same asymmetric unit are listed below, sorted by their clash magnitude.

Atom-1	Atom-2	Interatomic distance (Å)	Clash overlap (Å)
1:A:345:LEU:HD13	1:A:352:LYS:NZ	1.55	1.20
1:A:244:ARG:HG2	1:A:244:ARG:HH11	1.05	1.17
1:A:375:LYS:HD3	1:A:377:GLU:OE2	1.58	1.02
1:A:345:LEU:CD1	1:A:352:LYS:HZ1	1.73	1.02
1:A:335:LEU:HD12	1:A:341:ALA:HA	1.41	1.00
1:A:244:ARG:HH11	1:A:244:ARG:CG	1.73	0.99

Continued on next page...

Continued from previous page...

Atom-1	Atom-2	Interatomic distance (Å)	Clash overlap (Å)
1:A:228:GLN:HE21	1:A:228:GLN:H	1.12	0.98
1:A:345:LEU:HD13	1:A:352:LYS:HZ1	0.81	0.97
1:A:244:ARG:HG2	1:A:244:ARG:NH1	1.85	0.90
1:A:335:LEU:CD1	1:A:341:ALA:HA	2.05	0.86
1:A:244:ARG:CG	1:A:244:ARG:NH1	2.37	0.84
1:A:300:HIS:HD2	1:A:302:LYS:H	1.25	0.83
1:A:173:LEU:H	1:A:194:HIS:HD2	1.26	0.83
1:A:345:LEU:HD22	1:A:352:LYS:HD2	1.59	0.82
1:A:365:HIS:HD2	1:A:368:THR:OG1	1.68	0.76
1:A:300:HIS:CD2	1:A:302:LYS:H	2.06	0.74
1:A:302:LYS:HD3	1:A:409:LEU:O	1.94	0.68
1:A:124:ARG:NH1	1:A:136:ALA:O	2.27	0.67
1:A:345:LEU:CD1	1:A:352:LYS:NZ	2.47	0.67
1:A:1:MET:HE3	1:A:5:THR:HG22	1.77	0.65
1:A:330:ILE:HD13	1:A:392:SER:HA	1.81	0.63
1:A:151:ASN:HB2	1:A:179:PHE:CZ	2.35	0.61
1:A:221:GLU:OE1	1:A:224:ARG:NH1	2.22	0.60
1:A:228:GLN:HE21	1:A:228:GLN:N	1.93	0.60
1:A:345:LEU:HB3	1:A:352:LYS:HZ2	1.69	0.58
1:A:66:LYS:HE2	1:A:72:LEU:O	2.05	0.57
1:A:48:TYR:CE1	1:A:54:LYS:HG3	2.42	0.54
1:A:91:LEU:HD11	1:A:223:TRP:CZ3	2.41	0.54
1:A:228:GLN:H	1:A:228:GLN:NE2	1.93	0.53
1:A:365:HIS:CD2	1:A:368:THR:OG1	2.58	0.52
1:A:335:LEU:HD12	1:A:341:ALA:CA	2.30	0.48
1:A:147:GLU:HG2	1:A:176:ASP:HB3	1.96	0.47
1:A:318:ARG:HG3	1:A:319:ASN:N	2.30	0.47
1:A:300:HIS:HD2	1:A:302:LYS:N	2.03	0.46
1:A:352:LYS:HB3	1:A:352:LYS:HE2	1.19	0.46
1:A:151:ASN:HD21	1:A:390:ARG:HD2	1.81	0.46
1:A:183:GLY:HA2	1:A:186:CYS:O	2.15	0.46
1:A:291:ARG:HG3	1:A:291:ARG:HH11	1.82	0.45
1:A:35:LEU:C	1:A:35:LEU:HD23	2.41	0.45
1:A:365:HIS:HE1	1:A:386:PRO:O	2.01	0.44
1:A:318:ARG:NH2	1:A:319:ASN:HD21	2.16	0.43
1:A:345:LEU:HD22	1:A:352:LYS:CD	2.41	0.43
1:A:282:ARG:O	1:A:286:MET:HG3	2.18	0.43
1:A:345:LEU:HD13	1:A:352:LYS:CE	2.43	0.43
1:A:226:TYR:HA	1:A:227:PRO:HD2	1.81	0.42
1:A:27:VAL:O	1:A:27:VAL:HG23	2.20	0.42
1:A:91:LEU:HD13	1:A:248:PHE:CE1	2.55	0.41

Continued on next page...

Continued from previous page...

Atom-1	Atom-2	Interatomic distance (Å)	Clash overlap (Å)
1:A:207:HIS:O	1:A:208:GLY:C	2.62	0.41

There are no symmetry-related clashes.

5.3 Torsion angles [i](#)

5.3.1 Protein backbone [i](#)

In the following table, the Percentiles column shows the percent Ramachandran outliers of the chain as a percentile score with respect to all X-ray entries followed by that with respect to entries of similar resolution.

The Analysed column shows the number of residues for which the backbone conformation was analysed, and the total number of residues.

Mol	Chain	Analysed	Favoured	Allowed	Outliers	Percentiles
1	A	401/412 (97%)	392 (98%)	9 (2%)	0	100 100

There are no Ramachandran outliers to report.

5.3.2 Protein sidechains [i](#)

In the following table, the Percentiles column shows the percent sidechain outliers of the chain as a percentile score with respect to all X-ray entries followed by that with respect to entries of similar resolution.

The Analysed column shows the number of residues for which the sidechain conformation was analysed, and the total number of residues.

Mol	Chain	Analysed	Rotameric	Outliers	Percentiles
1	A	307/314 (98%)	293 (95%)	14 (5%)	24 22

All (14) residues with a non-rotameric sidechain are listed below:

Mol	Chain	Res	Type
1	A	40	GLU
1	A	55	ASP
1	A	91	LEU
1	A	228	GLN
1	A	230	LEU

Continued on next page...

Continued from previous page...

Mol	Chain	Res	Type
1	A	244	ARG
1	A	287	SER
1	A	304	LYS
1	A	307	ARG
1	A	331	LEU
1	A	352	LYS
1	A	375	LYS
1	A	377	GLU
1	A	410	GLU

Sometimes sidechains can be flipped to improve hydrogen bonding and reduce clashes. All (9) such sidechains are listed below:

Mol	Chain	Res	Type
1	A	194	HIS
1	A	228	GLN
1	A	231	GLN
1	A	298	GLN
1	A	300	HIS
1	A	317	HIS
1	A	365	HIS
1	A	371	HIS
1	A	381	GLN

5.3.3 RNA [i](#)

There are no RNA molecules in this entry.

5.4 Non-standard residues in protein, DNA, RNA chains [i](#)

There are no non-standard protein/DNA/RNA residues in this entry.

5.5 Carbohydrates [i](#)

There are no oligosaccharides in this entry.

5.6 Ligand geometry [i](#)

1 ligand is modelled in this entry.

In the following table, the Counts columns list the number of bonds (or angles) for which Mogul statistics could be retrieved, the number of bonds (or angles) that are observed in the model and the number of bonds (or angles) that are defined in the Chemical Component Dictionary. The Link column lists molecule types, if any, to which the group is linked. The Z score for a bond length (or angle) is the number of standard deviations the observed value is removed from the expected value. A bond length (or angle) with $|Z| > 2$ is considered an outlier worth inspection. RMSZ is the root-mean-square of all Z scores of the bond lengths (or angles).

Mol	Type	Chain	Res	Link	Bond lengths			Bond angles		
					Counts	RMSZ	# Z > 2	Counts	RMSZ	# Z > 2
2	PLP	A	1202	1	15,15,16	2.58	7 (46%)	21,22,23	2.74	9 (42%)

In the following table, the Chirals column lists the number of chiral outliers, the number of chiral centers analysed, the number of these observed in the model and the number defined in the Chemical Component Dictionary. Similar counts are reported in the Torsion and Rings columns. '-' means no outliers of that kind were identified.

Mol	Type	Chain	Res	Link	Chirals	Torsions	Rings
2	PLP	A	1202	1	-	0/6/6/8	0/1/1/1

All (7) bond length outliers are listed below:

Mol	Chain	Res	Type	Atoms	Z	Observed(Å)	Ideal(Å)
2	A	1202	PLP	O3-C3	-5.77	1.23	1.36
2	A	1202	PLP	C2-N1	4.27	1.41	1.33
2	A	1202	PLP	P-O2P	-4.12	1.39	1.54
2	A	1202	PLP	C6-N1	3.00	1.40	1.34
2	A	1202	PLP	C5-C4	2.53	1.43	1.40
2	A	1202	PLP	P-O3P	-2.46	1.45	1.54
2	A	1202	PLP	C6-C5	2.13	1.42	1.37

All (9) bond angle outliers are listed below:

Mol	Chain	Res	Type	Atoms	Z	Observed(°)	Ideal(°)
2	A	1202	PLP	O3P-P-O4P	-6.54	89.62	106.67
2	A	1202	PLP	O4P-C5A-C5	6.30	121.17	109.36
2	A	1202	PLP	C2A-C2-C3	-4.39	115.66	120.80
2	A	1202	PLP	C2A-C2-N1	3.38	124.02	117.64
2	A	1202	PLP	C6-C5-C4	3.00	120.56	118.10
2	A	1202	PLP	O3P-P-O1P	2.65	121.15	110.83
2	A	1202	PLP	C5A-C5-C6	-2.24	115.70	119.36
2	A	1202	PLP	O3P-P-O2P	2.13	115.77	107.80
2	A	1202	PLP	O3-C3-C4	2.09	123.55	118.10

There are no chirality outliers.

There are no torsion outliers.

There are no ring outliers.

No monomer is involved in short contacts.

5.7 Other polymers

There are no such residues in this entry.

5.8 Polymer linkage issues

There are no chain breaks in this entry.

6 Fit of model and data [i](#)

6.1 Protein, DNA and RNA chains [i](#)

In the following table, the column labelled '#RSRZ > 2' contains the number (and percentage) of RSRZ outliers, followed by percent RSRZ outliers for the chain as percentile scores relative to all X-ray entries and entries of similar resolution. The OWAB column contains the minimum, median, 95th percentile and maximum values of the occupancy-weighted average B-factor per residue. The column labelled 'Q < 0.9' lists the number of (and percentage) of residues with an average occupancy less than 0.9.

Mol	Chain	Analysed	<RSRZ>	#RSRZ>2	OWAB(Å ²)	Q<0.9
1	A	405/412 (98%)	-0.20	5 (1%) 76 76	12, 24, 39, 49	0

All (5) RSRZ outliers are listed below:

Mol	Chain	Res	Type	RSRZ
1	A	412	VAL	5.2
1	A	231	GLN	2.5
1	A	375	LYS	2.5
1	A	352	LYS	2.4
1	A	179	PHE	2.1

6.2 Non-standard residues in protein, DNA, RNA chains [i](#)

There are no non-standard protein/DNA/RNA residues in this entry.

6.3 Carbohydrates [i](#)

There are no oligosaccharides in this entry.

6.4 Ligands [i](#)

In the following table, the Atoms column lists the number of modelled atoms in the group and the number defined in the chemical component dictionary. The B-factors column lists the minimum, median, 95th percentile and maximum values of B factors of atoms in the group. The column labelled 'Q < 0.9' lists the number of atoms with occupancy less than 0.9.

Mol	Type	Chain	Res	Atoms	RSCC	RSR	B-factors(Å ²)	Q<0.9
2	PLP	A	1202	15/16	0.95	0.10	16,30,32,32	0

6.5 Other polymers

There are no such residues in this entry.