



# Full wwPDB X-ray Structure Validation Report ⓘ

Mar 8, 2026 – 04:14 AM UTC

PDB ID : 4CDB / pdb\_00004cdb  
Title : Crystal structure of listeriolysin O  
Authors : Koester, S.; Yildiz, O.  
Deposited on : 2013-10-30  
Resolution : 2.15 Å(reported)

This is a Full wwPDB X-ray Structure Validation Report for a publicly released PDB entry.

We welcome your comments at [validation@mail.wwpdb.org](mailto:validation@mail.wwpdb.org)

A user guide is available at

<https://www.wwpdb.org/validation/2017/XrayValidationReportHelp>

with specific help available everywhere you see the ⓘ symbol.

The types of validation reports are described at

<http://www.wwpdb.org/validation/2017/FAQs#types>.

---

The following versions of software and data (see [references ⓘ](#)) were used in the production of this report:

MolProbity : 4-5-2 with Phenix2.0  
Mogul : 2022.3.0, CSD as543be (2022)  
Xtrriage (Phenix) : 2.0  
EDS : 3.0  
Percentile statistics : 20250101.v01 (using entries in the PDB archive January 1st 2025)  
CCP4 : 9.0.010 (Gargrove)  
Density-Fitness : 1.0.12  
Ideal geometry (proteins) : Engh & Huber (2001)  
Ideal geometry (DNA, RNA) : Parkinson et al. (1996)  
Validation Pipeline (wwPDB-VP) : 2.49

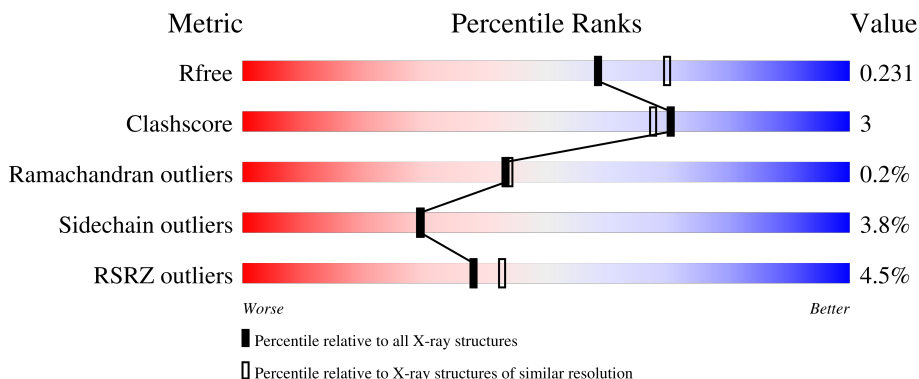
# 1 Overall quality at a glance

The following experimental techniques were used to determine the structure:

*X-RAY DIFFRACTION*

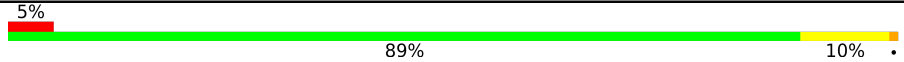
The reported resolution of this entry is 2.15 Å.

Percentile scores (ranging between 0-100) for global validation metrics of the entry are shown in the following graphic. The table shows the number of entries on which the scores are based.



Metric	Whole archive (#Entries)	Similar resolution (#Entries, resolution range(Å))
$R_{free}$	180053	2057 (2.16-2.16)
Clashscore	190562	2159 (2.16-2.16)
Ramachandran outliers	187476	2134 (2.16-2.16)
Sidechain outliers	187428	2133 (2.16-2.16)
RSRZ outliers	180081	2059 (2.16-2.16)

The table below summarises the geometric issues observed across the polymeric chains and their fit to the electron density. The red, orange, yellow and green segments of the lower bar indicate the fraction of residues that contain outliers for  $\geq 3$ , 2, 1 and 0 types of geometric quality criteria respectively. A grey segment represents the fraction of residues that are not modelled. The numeric value for each fraction is indicated below the corresponding segment, with a dot representing fractions  $\leq 5\%$ . The upper red bar (where present) indicates the fraction of residues that have poor fit to the electron density. The numeric value is given above the bar.

Mol	Chain	Length	Quality of chain
1	A	488	

The following table lists non-polymeric compounds, carbohydrate monomers and non-standard residues in protein, DNA, RNA chains that are outliers for geometric or electron-density-fit criteria:

Mol	Type	Chain	Res	Chirality	Geometry	Clashes	Electron density
2	ACT	A	1528	-	-	X	-

## 2 Entry composition [i](#)

There are 5 unique types of molecules in this entry. The entry contains 4152 atoms, of which 0 are hydrogens and 0 are deuteriums.

In the tables below, the ZeroOcc column contains the number of atoms modelled with zero occupancy, the AltConf column contains the number of residues with at least one atom in alternate conformation and the Trace column contains the number of residues modelled with at most 2 atoms.

- Molecule 1 is a protein called LISTERIOLYSIN O.

Mol	Chain	Residues	Atoms					ZeroOcc	AltConf	Trace
			Total	C	N	O	S			
1	A	488	3826	2413	655	753	5	0	0	0

- Molecule 2 is ACETATE ION (CCD ID: ACT) (formula: C<sub>2</sub>H<sub>3</sub>O<sub>2</sub>).

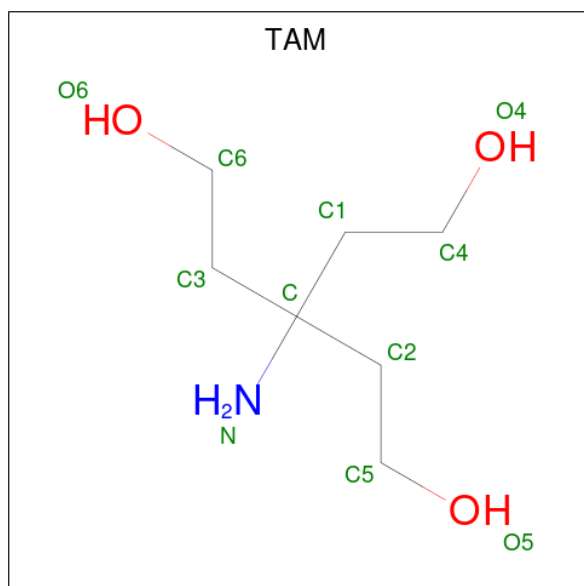


Mol	Chain	Residues	Atoms			ZeroOcc	AltConf
			Total	C	O		
2	A	1	4	2	2	0	0
2	A	1	4	2	2	0	0
2	A	1	4	2	2	0	0
2	A	1	4	2	2	0	0

- Molecule 3 is SODIUM ION (CCD ID: NA) (formula: Na).

Mol	Chain	Residues	Atoms		ZeroOcc	AltConf
3	A	15	Total	Na	0	0
			15	15		

- Molecule 4 is TRIS(HYDROXYETHYL)AMINOMETHANE (CCD ID: TAM) (formula:  $C_7H_{17}NO_3$ ).



Mol	Chain	Residues	Atoms				ZeroOcc	AltConf
			Total	C	N	O		
4	A	1	11	7	1	3	0	0

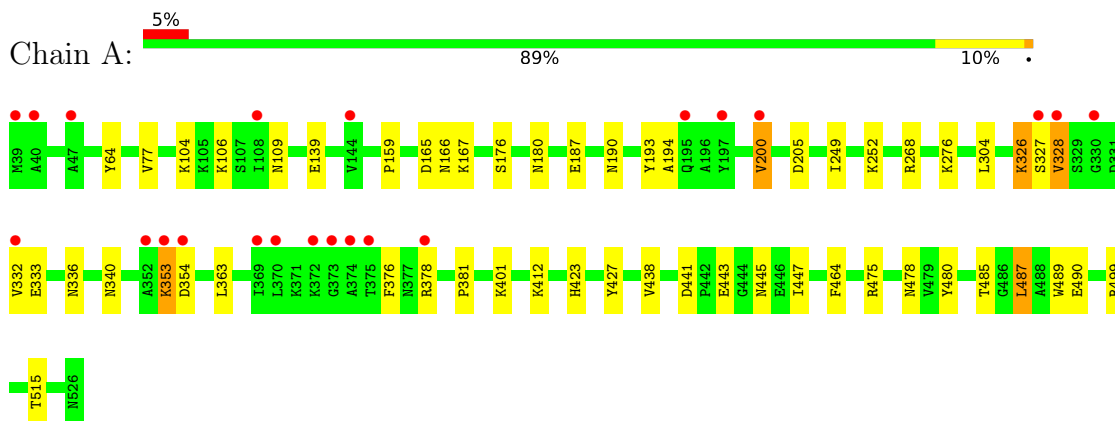
- Molecule 5 is water.

Mol	Chain	Residues	Atoms		ZeroOcc	AltConf
5	A	284	Total	O	0	0
			284	284		

### 3 Residue-property plots [i](#)

These plots are drawn for all protein, RNA, DNA and oligosaccharide chains in the entry. The first graphic for a chain summarises the proportions of the various outlier classes displayed in the second graphic. The second graphic shows the sequence view annotated by issues in geometry and electron density. Residues are color-coded according to the number of geometric quality criteria for which they contain at least one outlier: green = 0, yellow = 1, orange = 2 and red = 3 or more. A red dot above a residue indicates a poor fit to the electron density ( $RSRZ > 2$ ). Stretches of 2 or more consecutive residues without any outlier are shown as a green connector. Residues present in the sample, but not in the model, are shown in grey.

- Molecule 1: LISTERIOLYSIN O



## 4 Data and refinement statistics

Property	Value	Source
Space group	P 21 21 21	Depositor
Cell constants a, b, c, $\alpha$ , $\beta$ , $\gamma$	26.72Å 85.15Å 229.90Å 90.00° 90.00° 90.00°	Depositor
Resolution (Å)	47.64 – 2.15 47.64 – 2.15	Depositor EDS
% Data completeness (in resolution range)	99.9 (47.64-2.15) 99.9 (47.64-2.15)	Depositor EDS
$R_{merge}$	0.14	Depositor
$R_{sym}$	(Not available)	Depositor
$\langle I/\sigma(I) \rangle$ <sup>1</sup>	1.69 (at 2.16Å)	Xtrriage
Refinement program	PHENIX (PHENIX.REFINE)	Depositor
R, $R_{free}$	0.194 , 0.246 (Not available) , 0.231	Depositor DCC
$R_{free}$ test set	1495 reflections (5.00%)	wwPDB-VP
Wilson B-factor (Å <sup>2</sup> )	36.2	Xtrriage
Anisotropy	0.576	Xtrriage
Bulk solvent $k_{sol}$ (e/Å <sup>3</sup> ), $B_{sol}$ (Å <sup>2</sup> )	0.28 , 44.5	EDS
L-test for twinning <sup>2</sup>	$\langle  L  \rangle = 0.47$ , $\langle L^2 \rangle = 0.30$	Xtrriage
Estimated twinning fraction	No twinning to report.	Xtrriage
$F_o, F_c$ correlation	0.96	EDS
Total number of atoms	4152	wwPDB-VP
Average B, all atoms (Å <sup>2</sup> )	55.0	wwPDB-VP

Xtrriage's analysis on translational NCS is as follows: *The largest off-origin peak in the Patterson function is 5.89% of the height of the origin peak. No significant pseudotranslation is detected.*

<sup>1</sup>Intensities estimated from amplitudes.

<sup>2</sup>Theoretical values of  $\langle |L| \rangle$ ,  $\langle L^2 \rangle$  for acentric reflections are 0.5, 0.333 respectively for untwinned datasets, and 0.375, 0.2 for perfectly twinned datasets.

## 5 Model quality [i](#)

### 5.1 Standard geometry [i](#)

Bond lengths and bond angles in the following residue types are not validated in this section: NA, TAM, ACT

The Z score for a bond length (or angle) is the number of standard deviations the observed value is removed from the expected value. A bond length (or angle) with  $|Z| > 5$  is considered an outlier worth inspection. RMSZ is the root-mean-square of all Z scores of the bond lengths (or angles).

Mol	Chain	Bond lengths		Bond angles	
		RMSZ	# Z  >5	RMSZ	# Z  >5
1	A	0.27	0/3905	0.67	0/5307

There are no bond length outliers.

There are no bond angle outliers.

There are no chirality outliers.

There are no planarity outliers.

### 5.2 Too-close contacts [i](#)

In the following table, the Non-H and H(model) columns list the number of non-hydrogen atoms and hydrogen atoms in the chain respectively. The H(added) column lists the number of hydrogen atoms added and optimized by MolProbity. The Clashes column lists the number of clashes within the asymmetric unit, whereas Symm-Clashes lists symmetry-related clashes.

Mol	Chain	Non-H	H(model)	H(added)	Clashes	Symm-Clashes
1	A	3826	0	3768	24	0
2	A	16	0	12	3	0
3	A	15	0	0	0	0
4	A	11	0	17	2	0
5	A	284	0	0	0	0
All	All	4152	0	3797	26	0

The all-atom clashscore is defined as the number of clashes found per 1000 atoms (including hydrogen atoms). The all-atom clashscore for this structure is 3.

All (26) close contacts within the same asymmetric unit are listed below, sorted by their clash magnitude.

Atom-1	Atom-2	Interatomic distance (Å)	Clash overlap (Å)
1:A:249:ILE:HB	1:A:304:LEU:HB2	1.72	0.70
1:A:159:PRO:HG3	1:A:200:VAL:HG11	1.81	0.63
1:A:205:ASP:HB3	1:A:252:LYS:HB2	1.84	0.59
1:A:336:ASN:O	1:A:340:ASN:ND2	2.36	0.58
1:A:376:PHE:HE1	1:A:381:PRO:HA	1.70	0.57
1:A:190:ASN:HA	1:A:194:ALA:HB2	1.90	0.54
1:A:438:VAL:HG21	1:A:475:ARG:HE	1.73	0.54
1:A:423:HIS:HB3	1:A:464:PHE:HB3	1.90	0.53
1:A:485:THR:OG1	1:A:490:GLU:O	2.28	0.52
1:A:187:GLU:OE1	1:A:378:ARG:NH2	2.44	0.51
1:A:176:SER:O	1:A:180:ASN:ND2	2.35	0.49
1:A:326:LYS:O	1:A:328:VAL:N	2.46	0.49
1:A:165:ASP:OD2	1:A:193:TYR:OH	2.29	0.44
1:A:499:ARG:HG2	2:A:1528:ACT:H1	1.99	0.44
1:A:353:LYS:HB3	1:A:354:ASP:H	1.53	0.44
1:A:77:VAL:HG12	1:A:401:LYS:HB3	2.01	0.42
1:A:427:TYR:HB3	1:A:515:THR:HG22	2.00	0.42
1:A:441:ASP:OD1	1:A:445:ASN:N	2.51	0.42
1:A:478:ASN:HB3	2:A:1528:ACT:C	2.49	0.42
4:A:1546:TAM:H62	4:A:1546:TAM:H22	1.75	0.42
4:A:1546:TAM:H41	4:A:1546:TAM:H21	1.44	0.41
1:A:401:LYS:HE3	1:A:401:LYS:HB2	1.89	0.41
1:A:487:LEU:HG	1:A:489:TRP:CZ2	2.56	0.41
1:A:166:ASN:OD1	1:A:167:LYS:HG3	2.21	0.40
1:A:64:TYR:HB2	1:A:276:LYS:HD3	2.03	0.40
1:A:480:TYR:HB2	2:A:1528:ACT:H3	2.03	0.40

There are no symmetry-related clashes.

## 5.3 Torsion angles [i](#)

### 5.3.1 Protein backbone [i](#)

In the following table, the Percentiles column shows the percent Ramachandran outliers of the chain as a percentile score with respect to all X-ray entries followed by that with respect to entries of similar resolution.

The Analysed column shows the number of residues for which the backbone conformation was analysed, and the total number of residues.

Mol	Chain	Analysed	Favoured	Allowed	Outliers	Percentiles
1	A	486/488 (100%)	468 (96%)	17 (4%)	1 (0%)	43 44

All (1) Ramachandran outliers are listed below:

Mol	Chain	Res	Type
1	A	327	SER

### 5.3.2 Protein sidechains [i](#)

In the following table, the Percentiles column shows the percent sidechain outliers of the chain as a percentile score with respect to all X-ray entries followed by that with respect to entries of similar resolution.

The Analysed column shows the number of residues for which the sidechain conformation was analysed, and the total number of residues.

Mol	Chain	Analysed	Rotameric	Outliers	Percentiles
1	A	422/422 (100%)	406 (96%)	16 (4%)	29 29

All (16) residues with a non-rotameric sidechain are listed below:

Mol	Chain	Res	Type
1	A	104	LYS
1	A	106	LYS
1	A	109	ASN
1	A	139	GLU
1	A	200	VAL
1	A	268	ARG
1	A	326	LYS
1	A	328	VAL
1	A	332	VAL
1	A	333	GLU
1	A	353	LYS
1	A	363	LEU
1	A	412	LYS
1	A	443	GLU
1	A	447	ILE
1	A	487	LEU

Sometimes sidechains can be flipped to improve hydrogen bonding and reduce clashes. All (7) such sidechains are listed below:

Mol	Chain	Res	Type
1	A	111	ASN
1	A	301	GLN
1	A	336	ASN

*Continued on next page...*

*Continued from previous page...*

Mol	Chain	Res	Type
1	A	395	ASN
1	A	420	ASN
1	A	506	ASN
1	A	526	ASN

### 5.3.3 RNA [i](#)

There are no RNA molecules in this entry.

### 5.4 Non-standard residues in protein, DNA, RNA chains [i](#)

There are no non-standard protein/DNA/RNA residues in this entry.

### 5.5 Carbohydrates [i](#)

There are no oligosaccharides in this entry.

### 5.6 Ligand geometry [i](#)

Of 20 ligands modelled in this entry, 15 are monoatomic - leaving 5 for Mogul analysis.

In the following table, the Counts columns list the number of bonds (or angles) for which Mogul statistics could be retrieved, the number of bonds (or angles) that are observed in the model and the number of bonds (or angles) that are defined in the Chemical Component Dictionary. The Link column lists molecule types, if any, to which the group is linked. The Z score for a bond length (or angle) is the number of standard deviations the observed value is removed from the expected value. A bond length (or angle) with  $|Z| > 2$  is considered an outlier worth inspection. RMSZ is the root-mean-square of all Z scores of the bond lengths (or angles).

Mol	Type	Chain	Res	Link	Bond lengths			Bond angles		
					Counts	RMSZ	$\# Z  > 2$	Counts	RMSZ	$\# Z  > 2$
2	ACT	A	1528	-	3,3,3	0.82	0	3,3,3	0.70	0
2	ACT	A	1527	-	3,3,3	0.81	0	3,3,3	0.75	0
2	ACT	A	1530	-	3,3,3	0.80	0	3,3,3	0.73	0
2	ACT	A	1529	3	3,3,3	0.82	0	3,3,3	0.72	0
4	TAM	A	1546	-	10,10,10	0.46	0	12,12,12	1.79	3 (25%)

In the following table, the Chirals column lists the number of chiral outliers, the number of chiral centers analysed, the number of these observed in the model and the number defined in the Chemical Component Dictionary. Similar counts are reported in the Torsion and Rings columns.

'-' means no outliers of that kind were identified.

Mol	Type	Chain	Res	Link	Chirals	Torsions	Rings
4	TAM	A	1546	-	-	10/12/12/12	-

There are no bond length outliers.

All (3) bond angle outliers are listed below:

Mol	Chain	Res	Type	Atoms	Z	Observed(°)	Ideal(°)
4	A	1546	TAM	C5-C2-C	-4.10	111.14	115.97
4	A	1546	TAM	C6-C3-C	-2.93	112.51	115.97
4	A	1546	TAM	C4-C1-C	-2.48	113.05	115.97

There are no chirality outliers.

All (10) torsion outliers are listed below:

Mol	Chain	Res	Type	Atoms
4	A	1546	TAM	C2-C-C1-C4
4	A	1546	TAM	C3-C-C1-C4
4	A	1546	TAM	N-C-C1-C4
4	A	1546	TAM	C3-C-C2-C5
4	A	1546	TAM	N-C-C2-C5
4	A	1546	TAM	C1-C-C3-C6
4	A	1546	TAM	N-C-C3-C6
4	A	1546	TAM	C-C1-C4-O4
4	A	1546	TAM	C1-C-C2-C5
4	A	1546	TAM	C2-C-C3-C6

There are no ring outliers.

2 monomers are involved in 5 short contacts:

Mol	Chain	Res	Type	Clashes	Symm-Clashes
2	A	1528	ACT	3	0
4	A	1546	TAM	2	0

## 5.7 Other polymers [i](#)

There are no such residues in this entry.

## 5.8 Polymer linkage issues

There are no chain breaks in this entry.

## 6 Fit of model and data [i](#)

### 6.1 Protein, DNA and RNA chains [i](#)

In the following table, the column labelled ‘#RSRZ > 2’ contains the number (and percentage) of RSRZ outliers, followed by percent RSRZ outliers for the chain as percentile scores relative to all X-ray entries and entries of similar resolution. The OWAB column contains the minimum, median, 95<sup>th</sup> percentile and maximum values of the occupancy-weighted average B-factor per residue. The column labelled ‘Q < 0.9’ lists the number of (and percentage) of residues with an average occupancy less than 0.9.

Mol	Chain	Analysed	<RSRZ>	#RSRZ>2	OWAB(Å <sup>2</sup> )	Q<0.9
1	A	488/488 (100%)	0.31	22 (4%) 38 43	28, 51, 99, 127	0

All (22) RSRZ outliers are listed below:

Mol	Chain	Res	Type	RSRZ
1	A	352	ALA	4.8
1	A	39	MET	4.2
1	A	200	VAL	3.8
1	A	328	VAL	3.2
1	A	40	ALA	3.1
1	A	47	ALA	3.1
1	A	354	ASP	3.0
1	A	353	LYS	2.9
1	A	369	ILE	2.8
1	A	370	LEU	2.6
1	A	332	VAL	2.5
1	A	373	GLY	2.5
1	A	197	TYR	2.5
1	A	195	GLN	2.3
1	A	327	SER	2.3
1	A	375	THR	2.3
1	A	374	ALA	2.3
1	A	330	GLY	2.2
1	A	108	ILE	2.2
1	A	372	LYS	2.1
1	A	378	ARG	2.1
1	A	144	VAL	2.1

### 6.2 Non-standard residues in protein, DNA, RNA chains [i](#)

There are no non-standard protein/DNA/RNA residues in this entry.

### 6.3 Carbohydrates [i](#)

There are no oligosaccharides in this entry.

### 6.4 Ligands [i](#)

In the following table, the Atoms column lists the number of modelled atoms in the group and the number defined in the chemical component dictionary. The B-factors column lists the minimum, median, 95<sup>th</sup> percentile and maximum values of B factors of atoms in the group. The column labelled 'Q< 0.9' lists the number of atoms with occupancy less than 0.9.

Mol	Type	Chain	Res	Atoms	RSCC	RSR	B-factors(Å <sup>2</sup> )	Q<0.9
2	ACT	A	1529	4/4	0.68	0.24	104,106,106,108	0
2	ACT	A	1527	4/4	0.70	0.22	94,95,96,96	0
2	ACT	A	1530	4/4	0.70	0.19	98,100,100,102	0
2	ACT	A	1528	4/4	0.77	0.22	78,81,81,82	0
3	NA	A	1538	1/1	0.79	0.20	79,79,79,79	0
4	TAM	A	1546	11/11	0.82	0.16	76,94,97,98	0
3	NA	A	1534	1/1	0.84	0.14	93,93,93,93	0
3	NA	A	1545	1/1	0.88	0.20	82,82,82,82	0
3	NA	A	1535	1/1	0.89	0.13	81,81,81,81	0
3	NA	A	1532	1/1	0.90	0.18	84,84,84,84	0
3	NA	A	1531	1/1	0.90	0.10	73,73,73,73	0
3	NA	A	1533	1/1	0.91	0.12	54,54,54,54	0
3	NA	A	1540	1/1	0.91	0.23	63,63,63,63	0
3	NA	A	1536	1/1	0.93	0.17	59,59,59,59	0
3	NA	A	1542	1/1	0.93	0.09	84,84,84,84	0
3	NA	A	1539	1/1	0.94	0.17	56,56,56,56	0
3	NA	A	1543	1/1	0.94	0.22	60,60,60,60	0
3	NA	A	1544	1/1	0.94	0.20	73,73,73,73	0
3	NA	A	1537	1/1	0.94	0.09	58,58,58,58	0
3	NA	A	1541	1/1	0.94	0.16	65,65,65,65	0

### 6.5 Other polymers [i](#)

There are no such residues in this entry.