



wwPDB EM Validation Summary Report ⓘ

Mar 4, 2026 – 05:34 PM UTC

PDB ID : 6CE9 / pdb_00006ce9
EMDB ID : EMD-7462
Title : Insulin Receptor ectodomain in complex with two insulin molecules
Authors : Scapin, G.; Dandey, V.P.; Zhang, Z.; Strickland, C.; Potter, C.S.; Carragher, B.
Deposited on : 2018-02-11
Resolution : 4.30 Å(reported)

This is a wwPDB EM Validation Summary Report for a publicly released PDB entry.

We welcome your comments at validation@mail.wwpdb.org

A user guide is available at

<https://www.wwpdb.org/validation/2017/EMValidationReportHelp>

with specific help available everywhere you see the ⓘ symbol.

The types of validation reports are described at

<http://www.wwpdb.org/validation/2017/FAQs#types>.

The following versions of software and data (see [references ⓘ](#)) were used in the production of this report:

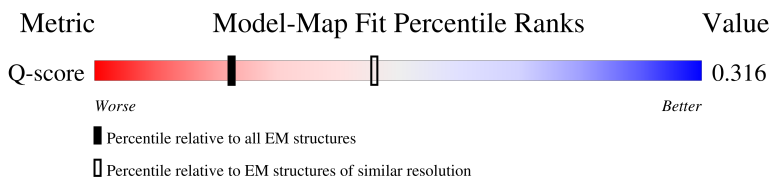
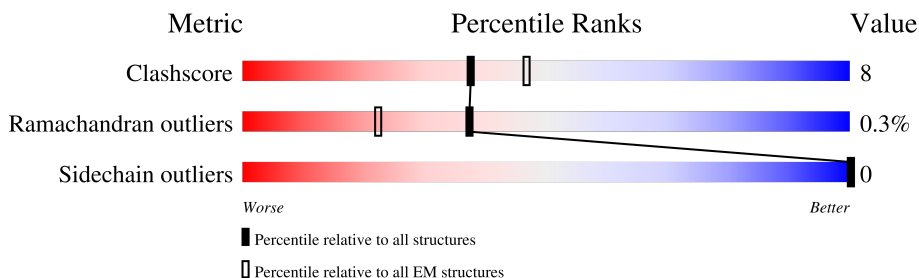
EMDB validation analysis : 0.0.1.dev132
Mogul : 2022.3.0, CSD as543be (2022)
MolProbity : 4-5-2 with Phenix2.0
Percentile statistics : 20250101.v01 (using entries in the PDB archive January 1st 2025)
EM percentile statistics : 202505.v01 (Using data in the EMDB archive up until May 2025)
MapQ : 1.9.13
Ideal geometry (proteins) : Engh & Huber (2001)
Ideal geometry (DNA, RNA) : Parkinson et al. (1996)
Validation Pipeline (wwPDB-VP) : 2.49

1 Overall quality at a glance i

The following experimental techniques were used to determine the structure:
ELECTRON MICROSCOPY

The reported resolution of this entry is 4.30 Å.

Percentile scores (ranging between 0-100) for global validation metrics of the entry are shown in the following graphic. The table shows the number of entries on which the scores are based.



Metric	Whole archive (#Entries)	EM structures (#Entries)	Similar EM resolution (#Entries, resolution range(Å))
Clashscore	229148	23984	-
Ramachandran outliers	224038	23583	-
Sidechain outliers	223484	23102	-
Q-score	-	25397	4585 (3.80 - 4.80)

The table below summarises the geometric issues observed across the polymeric chains and their fit to the map. The red, orange, yellow and green segments of the bar indicate the fraction of residues that contain outliers for ≥ 3 , 2, 1 and 0 types of geometric quality criteria respectively. A grey segment represents the fraction of residues that are not modelled. The numeric value for each fraction is indicated below the corresponding segment, with a dot representing fractions $\leq 5\%$. The upper red bar (where present) indicates the fraction of residues that have poor fit to the EM map (all-atom inclusion $< 40\%$). The numeric value is given above the bar.

Mol	Chain	Length	Quality of chain
1	A	917	 48% 13% 39%
1	B	917	 49% 12% 39%
2	M	30	 10% 77% 20% .
2	P	30	 10% 70% 23% 7%

Continued on next page...

Continued from previous page...

Mol	Chain	Length	Quality of chain
3	K	21	67% 29% 5%
3	N	21	76% 19% 5%
4	L	30	13% 80% 20%
4	O	30	17% 87% 13%
5	C	3	67% 33%
5	E	3	67% 100%
5	H	3	67% 33%
5	J	3	67% 100%
6	D	3	100%
6	I	3	100%
7	F	2	50% 50% 50%
7	Q	2	50% 50% 50%
8	G	2	50% 100%
8	R	2	50% 50% 50%

2 Entry composition [i](#)

There are 9 unique types of molecules in this entry. The entry contains 10782 atoms, of which 0 are hydrogens and 0 are deuteriums.

In the tables below, the AltConf column contains the number of residues with at least one atom in alternate conformation and the Trace column contains the number of residues modelled with at most 2 atoms.

- Molecule 1 is a protein called Insulin receptor.

Mol	Chain	Residues	Atoms					AltConf	Trace
			Total	C	N	O	S		
1	A	562	Total	C	N	O	S	0	0
			4540	2882	785	833	40		
1	B	562	Total	C	N	O	S	0	0
			4540	2882	785	833	40		

There are 2 discrepancies between the modelled and reference sequences:

Chain	Residue	Modelled	Actual	Comment	Reference
A	144	HIS	TYR	conflict	UNP P06213
B	144	HIS	TYR	conflict	UNP P06213

- Molecule 2 is a protein called Insulin receptor.

Mol	Chain	Residues	Atoms				AltConf	Trace
			Total	C	N	O		
2	M	30	Total	C	N	O	0	0
			253	164	42	47		
2	P	30	Total	C	N	O	0	0
			253	164	42	47		

- Molecule 3 is a protein called Insulin A chain.

Mol	Chain	Residues	Atoms					AltConf	Trace
			Total	C	N	O	S		
3	K	21	Total	C	N	O	S	0	0
			163	99	25	35	4		
3	N	21	Total	C	N	O	S	0	0
			163	99	25	35	4		

- Molecule 4 is a protein called Insulin B chain.

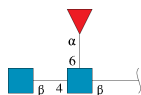
Mol	Chain	Residues	Atoms					AltConf	Trace
			Total	C	N	O	S		
4	L	30	Total	C	N	O	S	0	0
			240	157	40	41	2		

Continued on next page...

Continued from previous page...

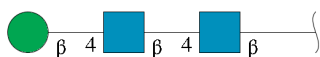
Mol	Chain	Residues	Atoms					AltConf	Trace
			Total	C	N	O	S		
4	O	30	240	157	40	41	2	0	0

- Molecule 5 is an oligosaccharide called 2-acetamido-2-deoxy-beta-D-glucopyranose-(1-4)-[alpha-L-fucopyranose-(1-6)]2-acetamido-2-deoxy-beta-D-glucopyranose.



Mol	Chain	Residues	Atoms				AltConf	Trace
			Total	C	N	O		
5	C	3	38	22	2	14	0	0
5	E	3	38	22	2	14	0	0
5	H	3	38	22	2	14	0	0
5	J	3	38	22	2	14	0	0

- Molecule 6 is an oligosaccharide called beta-D-mannopyranose-(1-4)-2-acetamido-2-deoxy-beta-D-glucopyranose-(1-4)-2-acetamido-2-deoxy-beta-D-glucopyranose.



Mol	Chain	Residues	Atoms				AltConf	Trace
			Total	C	N	O		
6	D	3	39	22	2	15	0	0
6	I	3	39	22	2	15	0	0

- Molecule 7 is an oligosaccharide called 2-acetamido-2-deoxy-beta-D-glucopyranose-(1-4)-2-acetamido-2-deoxy-beta-D-glucopyranose.



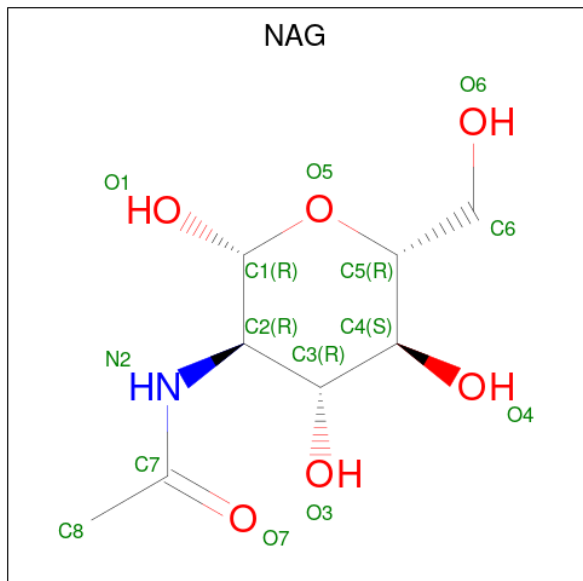
Mol	Chain	Residues	Atoms				AltConf	Trace
			Total	C	N	O		
7	F	2	28	16	2	10	0	0
7	Q	2	28	16	2	10	0	0

- Molecule 8 is an oligosaccharide called alpha-L-fucopyranose-(1-6)-2-acetamido-2-deoxy-beta-D-glucopyranose.



Mol	Chain	Residues	Atoms				AltConf	Trace
			Total	C	N	O		
8	G	2	24	14	1	9	0	0
8	R	2	24	14	1	9	0	0

- Molecule 9 is 2-acetamido-2-deoxy-beta-D-glucopyranose (CCD ID: NAG) (formula: $C_8H_{15}NO_6$).

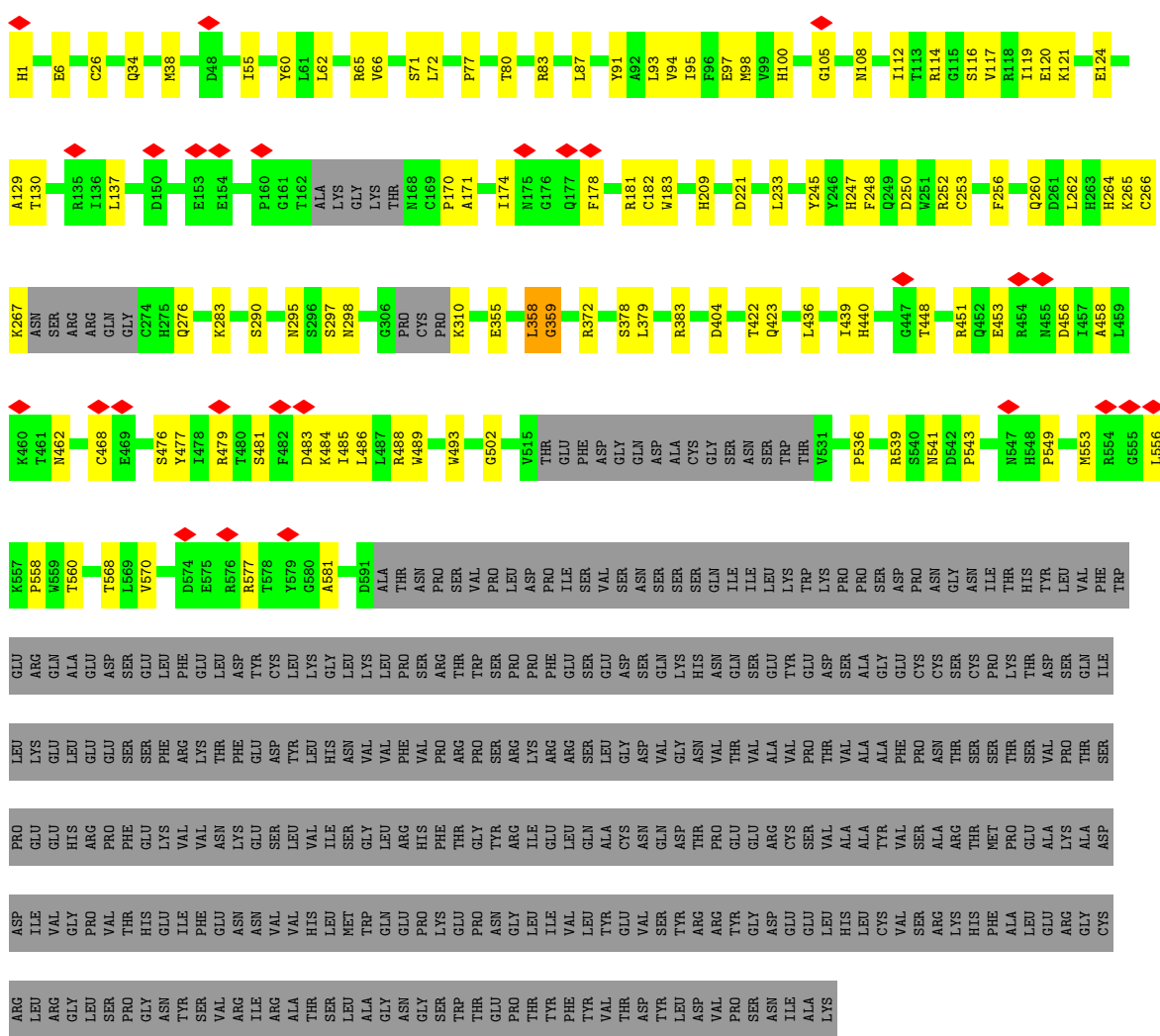


Mol	Chain	Residues	Atoms				AltConf
			Total	C	N	O	
9	A	1	14	8	1	5	0
9	A	1	14	8	1	5	0

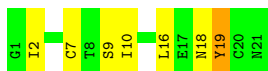
Continued on next page...

Continued from previous page...

Mol	Chain	Residues	Atoms				AltConf
			Total	C	N	O	
9	B	1	14	8	1	5	0
9	B	1	14	8	1	5	0

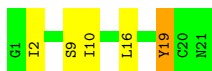


Chain K:  67% 29% 5%




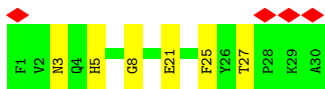
- Molecule 3: Insulin A chain

Chain N:  76% 19% 5%




- Molecule 4: Insulin B chain

Chain L:  13% 80% 20%



- Molecule 4: Insulin B chain

Chain O:  17% 87% 13%



- Molecule 5: 2-acetamido-2-deoxy-beta-D-glucopyranose-(1-4)-[alpha-L-fucopyranose-(1-6)]2-acetamido-2-deoxy-beta-D-glucopyranose

Chain C:  67% 67% 33%



- Molecule 5: 2-acetamido-2-deoxy-beta-D-glucopyranose-(1-4)-[alpha-L-fucopyranose-(1-6)]2-acetamido-2-deoxy-beta-D-glucopyranose

Chain E:  67% 100%



- Molecule 5: 2-acetamido-2-deoxy-beta-D-glucopyranose-(1-4)-[alpha-L-fucopyranose-(1-6)]2-acetamido-2-deoxy-beta-D-glucopyranose

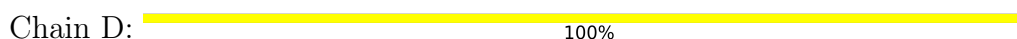
Chain H:  67% 67% 33%



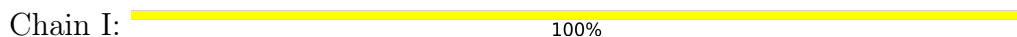
- Molecule 5: 2-acetamido-2-deoxy-beta-D-glucopyranose-(1-4)-[alpha-L-fucopyranose-(1-6)]2-acetamido-2-deoxy-beta-D-glucopyranose



- Molecule 6: beta-D-mannopyranose-(1-4)-2-acetamido-2-deoxy-beta-D-glucopyranose-(1-4)-2-acetamido-2-deoxy-beta-D-glucopyranose



- Molecule 6: beta-D-mannopyranose-(1-4)-2-acetamido-2-deoxy-beta-D-glucopyranose-(1-4)-2-acetamido-2-deoxy-beta-D-glucopyranose



- Molecule 7: 2-acetamido-2-deoxy-beta-D-glucopyranose-(1-4)-2-acetamido-2-deoxy-beta-D-glucopyranose



- Molecule 7: 2-acetamido-2-deoxy-beta-D-glucopyranose-(1-4)-2-acetamido-2-deoxy-beta-D-glucopyranose



- Molecule 8: alpha-L-fucopyranose-(1-6)-2-acetamido-2-deoxy-beta-D-glucopyranose





- Molecule 8: alpha-L-fucopyranose-(1-6)-2-acetamido-2-deoxy-beta-D-glucopyranose



4 Experimental information

Property	Value	Source
EM reconstruction method	SINGLE PARTICLE	Depositor
Imposed symmetry	POINT, C2	Depositor
Number of particles used	147436	Depositor
Resolution determination method	FSC 0.143 CUT-OFF	Depositor
CTF correction method	PHASE FLIPPING AND AMPLITUDE CORRECTION	Depositor
Microscope	FEI TITAN KRIOS	Depositor
Voltage (kV)	300	Depositor
Electron dose ($e^-/\text{\AA}^2$)	45.5	Depositor
Minimum defocus (nm)	Not provided	
Maximum defocus (nm)	Not provided	
Magnification	Not provided	
Image detector	GATAN K2 QUANTUM (4k x 4k)	Depositor
Maximum map value	1.887	Depositor
Minimum map value	-0.736	Depositor
Average map value	0.003	Depositor
Map value standard deviation	0.060	Depositor
Recommended contour level	0.57	Depositor
Map size (Å)	316.80002, 316.80002, 316.80002	wwPDB
Map dimensions	288, 288, 288	wwPDB
Map angles (°)	90.0, 90.0, 90.0	wwPDB
Pixel spacing (Å)	1.1, 1.1, 1.1	Depositor

5 Model quality [i](#)

5.1 Standard geometry [i](#)

Bond lengths and bond angles in the following residue types are not validated in this section: NAG, FUC, BMA

The Z score for a bond length (or angle) is the number of standard deviations the observed value is removed from the expected value. A bond length (or angle) with $|Z| > 5$ is considered an outlier worth inspection. RMSZ is the root-mean-square of all Z scores of the bond lengths (or angles).

Mol	Chain	Bond lengths		Bond angles	
		RMSZ	# Z >5	RMSZ	# Z >5
1	A	0.36	0/4646	0.57	2/6290 (0.0%)
1	B	0.36	0/4646	0.58	2/6290 (0.0%)
2	M	0.41	0/259	0.71	0/349
2	P	0.41	0/259	0.71	0/349
3	K	0.36	0/164	0.60	0/220
3	N	0.36	0/164	0.60	0/220
4	L	0.33	0/247	0.65	0/332
4	O	0.33	0/247	0.65	0/332
All	All	0.36	0/10632	0.59	4/14382 (0.0%)

Chiral center outliers are detected by calculating the chiral volume of a chiral center and verifying if the center is modelled as a planar moiety or with the opposite hand. A planarity outlier is detected by checking planarity of atoms in a peptide group, atoms in a mainchain group or atoms of a sidechain that are expected to be planar.

Mol	Chain	#Chirality outliers	#Planarity outliers
1	A	0	2
1	B	0	2
2	M	0	1
2	P	0	1
3	K	0	1
3	N	0	1
4	L	0	1
4	O	0	1
All	All	0	10

There are no bond length outliers.

All (4) bond angle outliers are listed below:

Mol	Chain	Res	Type	Atoms	Z	Observed(°)	Ideal(°)
1	A	1	HIS	CA-C-N	5.35	131.75	121.54
1	A	1	HIS	C-N-CA	5.35	131.75	121.54
1	B	1	HIS	CA-C-N	5.35	131.75	121.54
1	B	1	HIS	C-N-CA	5.35	131.75	121.54

There are no chirality outliers.

5 of 10 planarity outliers are listed below:

Mol	Chain	Res	Type	Group
1	A	358	LEU	Peptide
1	A	468	CYS	Peptide
1	B	358	LEU	Peptide
1	B	468	CYS	Peptide
2	M	715	VAL	Peptide

5.2 Too-close contacts [i](#)

In the following table, the Non-H and H(model) columns list the number of non-hydrogen atoms and hydrogen atoms in the chain respectively. The H(added) column lists the number of hydrogen atoms added and optimized by MolProbity. The Clashes column lists the number of clashes within the asymmetric unit, whereas Symm-Clashes lists symmetry-related clashes.

Mol	Chain	Non-H	H(model)	H(added)	Clashes	Symm-Clashes
1	A	4540	0	4423	73	0
1	B	4540	0	4423	66	0
2	M	253	0	245	6	0
2	P	253	0	245	9	0
3	K	163	0	151	6	0
3	N	163	0	151	3	0
4	L	240	0	232	4	0
4	O	240	0	232	2	0
5	C	38	0	34	0	0
5	E	38	0	34	0	0
5	H	38	0	34	0	0
5	J	38	0	34	0	0
6	D	39	0	34	0	0
6	I	39	0	34	0	0
7	F	28	0	25	0	0
7	Q	28	0	25	0	0
8	G	24	0	22	0	0
8	R	24	0	22	0	0
9	A	28	0	26	0	0

Continued on next page...

Continued from previous page...

Mol	Chain	Non-H	H(model)	H(added)	Clashes	Symm-Clashes
9	B	28	0	26	0	0
All	All	10782	0	10452	160	0

The all-atom clashscore is defined as the number of clashes found per 1000 atoms (including hydrogen atoms). The all-atom clashscore for this structure is 8.

The worst 5 of 160 close contacts within the same asymmetric unit are listed below, sorted by their clash magnitude.

Atom-1	Atom-2	Interatomic distance (Å)	Clash overlap (Å)
2:M:692:ILE:HG22	2:M:692:ILE:O	1.72	0.87
2:P:692:ILE:HG22	2:P:692:ILE:O	1.73	0.87
1:B:290:SER:HG	1:B:310:LYS:N	1.81	0.78
1:A:290:SER:HG	1:A:310:LYS:N	1.83	0.76
1:A:541:ASN:HB2	1:A:543:PRO:HD2	1.71	0.72

There are no symmetry-related clashes.

5.3 Torsion angles [i](#)

5.3.1 Protein backbone [i](#)

In the following table, the Percentiles column shows the percent Ramachandran outliers of the chain as a percentile score with respect to all PDB entries followed by that with respect to all EM entries.

The Analysed column shows the number of residues for which the backbone conformation was analysed, and the total number of residues.

Mol	Chain	Analysed	Favoured	Allowed	Outliers	Percentiles	
1	A	552/917 (60%)	483 (88%)	68 (12%)	1 (0%)	43	77
1	B	552/917 (60%)	481 (87%)	70 (13%)	1 (0%)	43	77
2	M	28/30 (93%)	22 (79%)	5 (18%)	1 (4%)	2	20
2	P	28/30 (93%)	22 (79%)	5 (18%)	1 (4%)	2	20
3	K	19/21 (90%)	18 (95%)	1 (5%)	0	100	100
3	N	19/21 (90%)	18 (95%)	1 (5%)	0	100	100
4	L	28/30 (93%)	24 (86%)	4 (14%)	0	100	100
4	O	28/30 (93%)	24 (86%)	4 (14%)	0	100	100
All	All	1254/1996 (63%)	1092 (87%)	158 (13%)	4 (0%)	37	71

All (4) Ramachandran outliers are listed below:

Mol	Chain	Res	Type
2	M	716	PRO
2	P	716	PRO
1	A	359	GLY
1	B	359	GLY

5.3.2 Protein sidechains [i](#)

In the following table, the Percentiles column shows the percent sidechain outliers of the chain as a percentile score with respect to all PDB entries followed by that with respect to all EM entries.

The Analysed column shows the number of residues for which the sidechain conformation was analysed, and the total number of residues.

Mol	Chain	Analysed	Rotameric	Outliers	Percentiles	
1	A	513/831 (62%)	513 (100%)	0	100	100
1	B	513/831 (62%)	513 (100%)	0	100	100
2	M	29/30 (97%)	29 (100%)	0	100	100
2	P	29/30 (97%)	29 (100%)	0	100	100
3	K	20/20 (100%)	20 (100%)	0	100	100
3	N	20/20 (100%)	20 (100%)	0	100	100
4	L	25/25 (100%)	25 (100%)	0	100	100
4	O	25/25 (100%)	25 (100%)	0	100	100
All	All	1174/1812 (65%)	1174 (100%)	0	100	100

There are no protein residues with a non-rotameric sidechain to report.

Sometimes sidechains can be flipped to improve hydrogen bonding and reduce clashes. 5 of 19 such sidechains are listed below:

Mol	Chain	Res	Type
1	B	410	GLN
3	N	18	ASN
4	O	3	ASN
4	L	3	ASN
1	B	1	HIS

5.3.3 RNA [i](#)

There are no RNA molecules in this entry.

5.4 Non-standard residues in protein, DNA, RNA chains [i](#)

There are no non-standard protein/DNA/RNA residues in this entry.

5.5 Carbohydrates [i](#)

26 monosaccharides are modelled in this entry.

In the following table, the Counts columns list the number of bonds (or angles) for which Mogul statistics could be retrieved, the number of bonds (or angles) that are observed in the model and the number of bonds (or angles) that are defined in the Chemical Component Dictionary. The Link column lists molecule types, if any, to which the group is linked. The Z score for a bond length (or angle) is the number of standard deviations the observed value is removed from the expected value. A bond length (or angle) with $|Z| > 2$ is considered an outlier worth inspection. RMSZ is the root-mean-square of all Z scores of the bond lengths (or angles).

Mol	Type	Chain	Res	Link	Bond lengths			Bond angles		
					Counts	RMSZ	# Z > 2	Counts	RMSZ	# Z > 2
5	NAG	C	1	5,1	14,14,15	0.30	0	17,19,21	0.88	1 (5%)
5	NAG	C	2	5	14,14,15	0.36	0	17,19,21	0.40	0
5	FUC	C	3	5	10,10,11	0.78	0	14,14,16	0.79	0
6	NAG	D	1	6,1	14,14,15	0.20	0	17,19,21	1.02	1 (5%)
6	NAG	D	2	6	14,14,15	0.42	0	17,19,21	0.72	1 (5%)
6	BMA	D	3	6	11,11,12	0.84	0	15,15,17	0.81	1 (6%)
5	NAG	E	1	5,1	14,14,15	0.22	0	17,19,21	0.57	0
5	NAG	E	2	5	14,14,15	0.30	0	17,19,21	0.46	0
5	FUC	E	3	5	10,10,11	0.72	0	14,14,16	0.65	0
7	NAG	F	1	7,1	14,14,15	0.80	1 (7%)	17,19,21	0.76	0
7	NAG	F	2	7	14,14,15	0.23	0	17,19,21	0.53	0
8	NAG	G	1	8,1	14,14,15	0.31	0	17,19,21	0.66	0
8	FUC	G	2	8	10,10,11	0.99	0	14,14,16	0.95	0
5	NAG	H	1	5,1	14,14,15	0.31	0	17,19,21	0.84	1 (5%)
5	NAG	H	2	5	14,14,15	0.37	0	17,19,21	0.41	0
5	FUC	H	3	5	10,10,11	0.79	0	14,14,16	0.77	0
6	NAG	I	1	6,1	14,14,15	0.24	0	17,19,21	1.06	2 (11%)
6	NAG	I	2	6	14,14,15	0.45	0	17,19,21	0.73	1 (5%)
6	BMA	I	3	6	11,11,12	0.83	0	15,15,17	0.83	1 (6%)
5	NAG	J	1	5,1	14,14,15	0.30	0	17,19,21	0.58	0

Mol	Type	Chain	Res	Link	Bond lengths			Bond angles		
					Counts	RMSZ	# Z > 2	Counts	RMSZ	# Z > 2
5	NAG	J	2	5	14,14,15	0.28	0	17,19,21	0.47	0
5	FUC	J	3	5	10,10,11	0.77	0	14,14,16	0.63	0
7	NAG	Q	1	7,1	14,14,15	0.75	1 (7%)	17,19,21	0.77	0
7	NAG	Q	2	7	14,14,15	0.23	0	17,19,21	0.53	0
8	NAG	R	1	8,1	14,14,15	0.25	0	17,19,21	0.68	0
8	FUC	R	2	8	10,10,11	1.00	0	14,14,16	0.98	1 (7%)

In the following table, the Chirals column lists the number of chiral outliers, the number of chiral centers analysed, the number of these observed in the model and the number defined in the Chemical Component Dictionary. Similar counts are reported in the Torsion and Rings columns. '-' means no outliers of that kind were identified.

Mol	Type	Chain	Res	Link	Chirals	Torsions	Rings
5	NAG	C	1	5,1	-	2/6/23/26	0/1/1/1
5	NAG	C	2	5	-	0/6/23/26	0/1/1/1
5	FUC	C	3	5	-	-	0/1/1/1
6	NAG	D	1	6,1	-	2/6/23/26	0/1/1/1
6	NAG	D	2	6	-	0/6/23/26	0/1/1/1
6	BMA	D	3	6	-	0/2/19/22	0/1/1/1
5	NAG	E	1	5,1	-	0/6/23/26	0/1/1/1
5	NAG	E	2	5	-	2/6/23/26	0/1/1/1
5	FUC	E	3	5	-	-	0/1/1/1
7	NAG	F	1	7,1	-	0/6/23/26	0/1/1/1
7	NAG	F	2	7	-	3/6/23/26	0/1/1/1
8	NAG	G	1	8,1	-	0/6/23/26	0/1/1/1
8	FUC	G	2	8	-	-	0/1/1/1
5	NAG	H	1	5,1	-	2/6/23/26	0/1/1/1
5	NAG	H	2	5	-	0/6/23/26	0/1/1/1
5	FUC	H	3	5	-	-	0/1/1/1
6	NAG	I	1	6,1	-	2/6/23/26	0/1/1/1
6	NAG	I	2	6	-	0/6/23/26	0/1/1/1
6	BMA	I	3	6	-	0/2/19/22	0/1/1/1
5	NAG	J	1	5,1	-	0/6/23/26	0/1/1/1
5	NAG	J	2	5	-	2/6/23/26	0/1/1/1
5	FUC	J	3	5	-	-	0/1/1/1
7	NAG	Q	1	7,1	-	2/6/23/26	0/1/1/1
7	NAG	Q	2	7	-	3/6/23/26	0/1/1/1
8	NAG	R	1	8,1	-	0/6/23/26	0/1/1/1
8	FUC	R	2	8	-	-	0/1/1/1

All (2) bond length outliers are listed below:

Mol	Chain	Res	Type	Atoms	Z	Observed(Å)	Ideal(Å)
7	F	1	NAG	O5-C1	-2.77	1.39	1.43
7	Q	1	NAG	O5-C1	-2.53	1.39	1.43

The worst 5 of 10 bond angle outliers are listed below:

Mol	Chain	Res	Type	Atoms	Z	Observed(°)	Ideal(°)
6	I	1	NAG	C1-O5-C5	3.29	116.60	112.19
6	D	1	NAG	C1-O5-C5	3.20	116.47	112.19
5	C	1	NAG	C1-O5-C5	3.11	116.35	112.19
5	H	1	NAG	C1-O5-C5	2.97	116.17	112.19
6	I	2	NAG	C1-O5-C5	2.36	115.35	112.19

There are no chirality outliers.

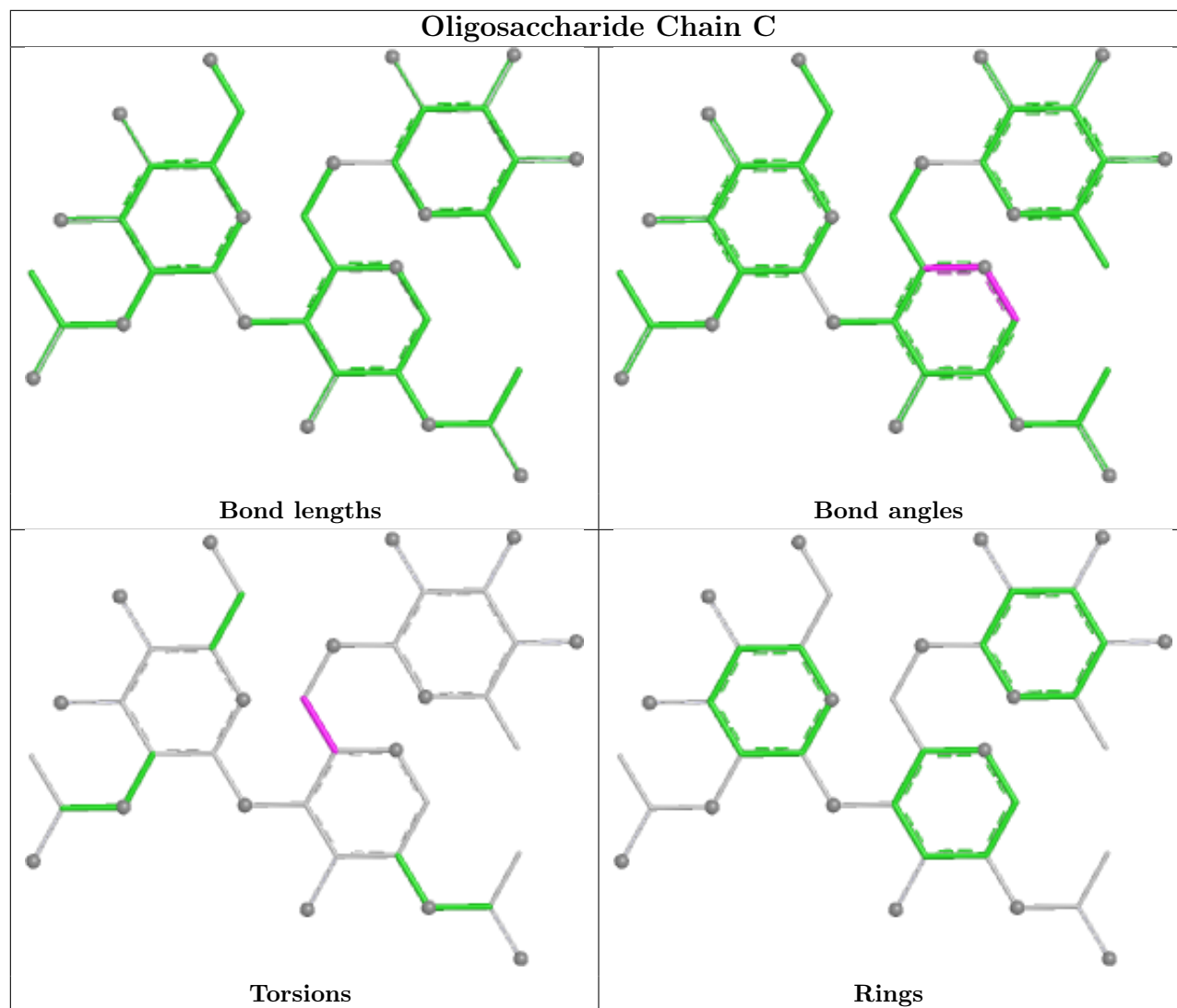
5 of 20 torsion outliers are listed below:

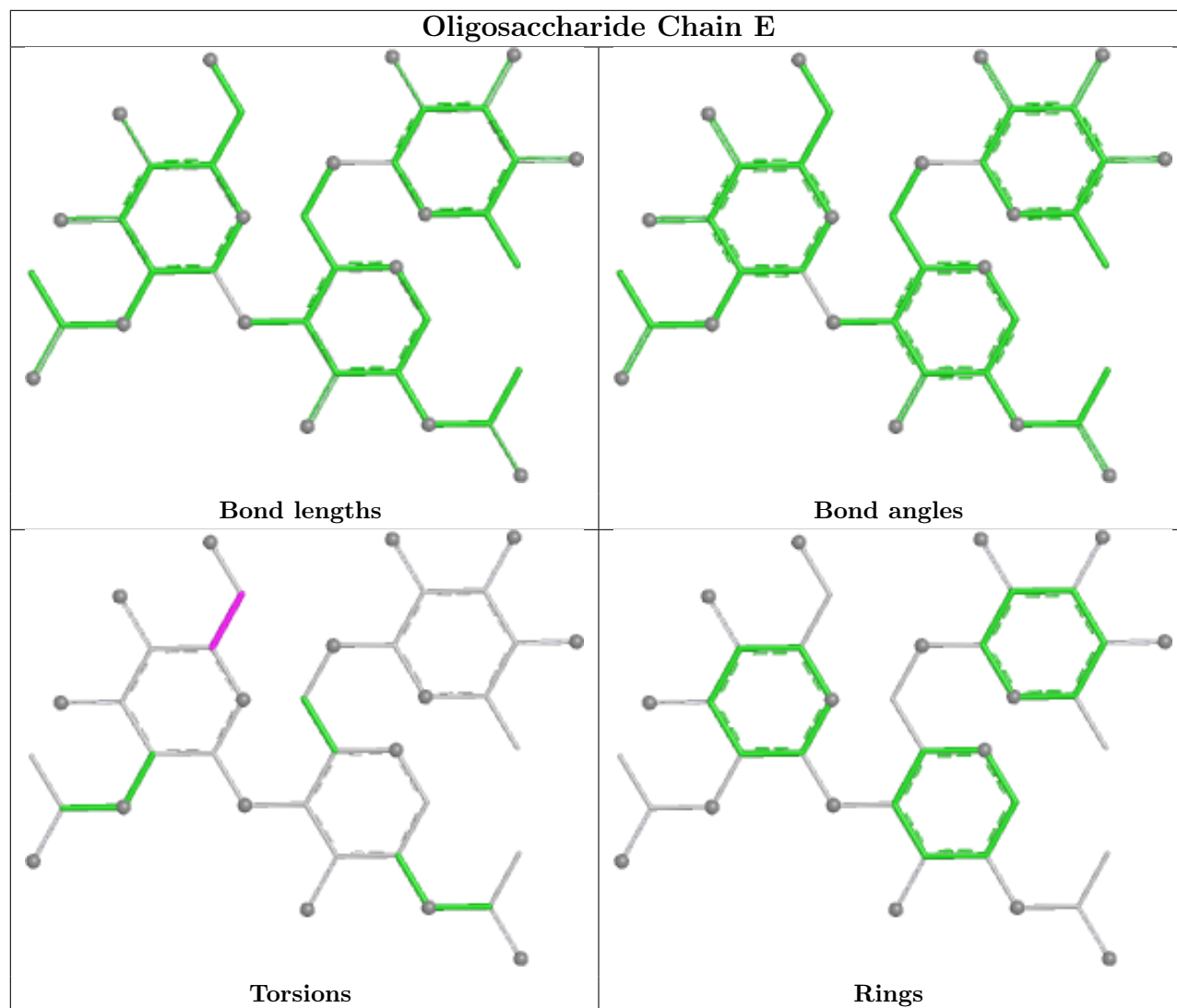
Mol	Chain	Res	Type	Atoms
7	F	2	NAG	O5-C5-C6-O6
7	Q	2	NAG	O5-C5-C6-O6
6	I	1	NAG	C4-C5-C6-O6
6	D	1	NAG	C4-C5-C6-O6
5	J	2	NAG	O5-C5-C6-O6

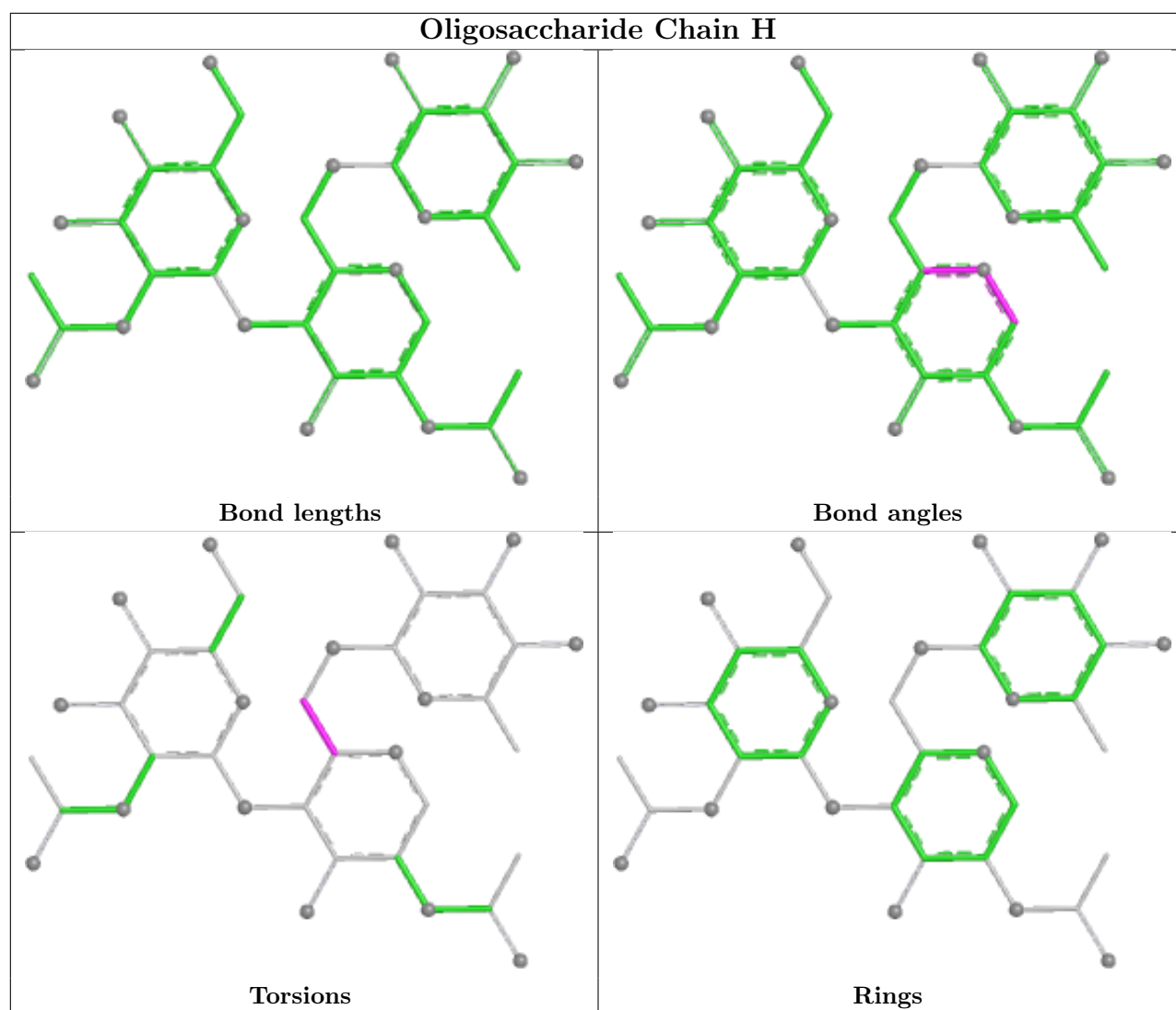
There are no ring outliers.

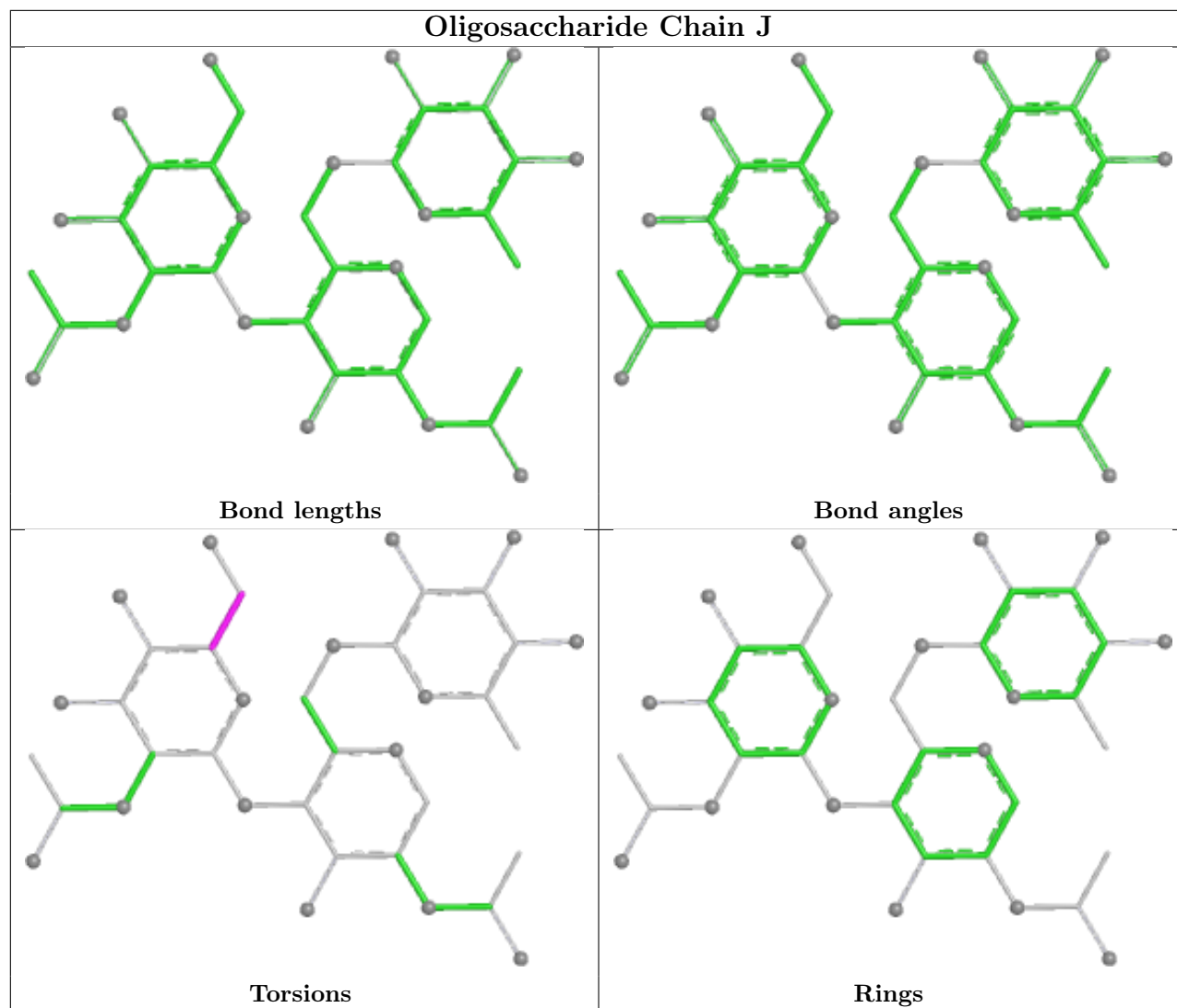
No monomer is involved in short contacts.

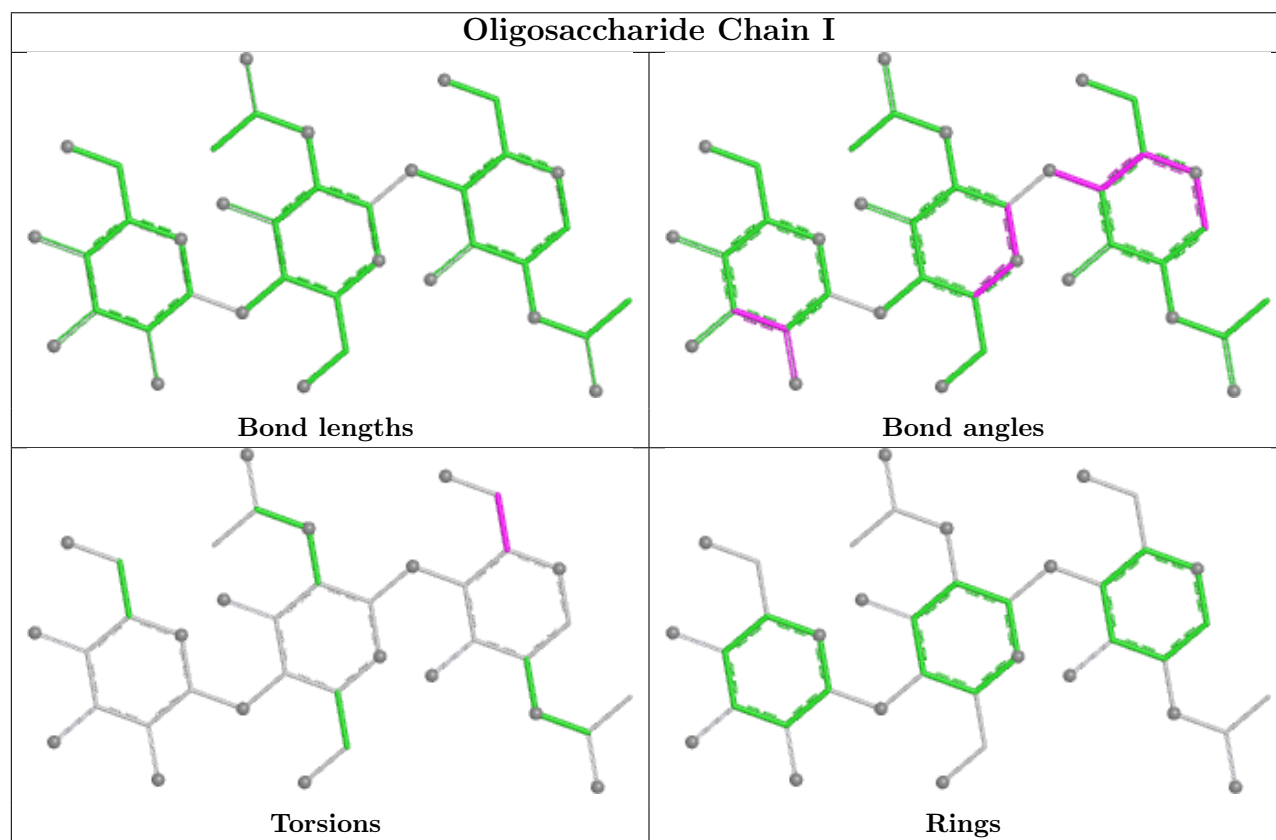
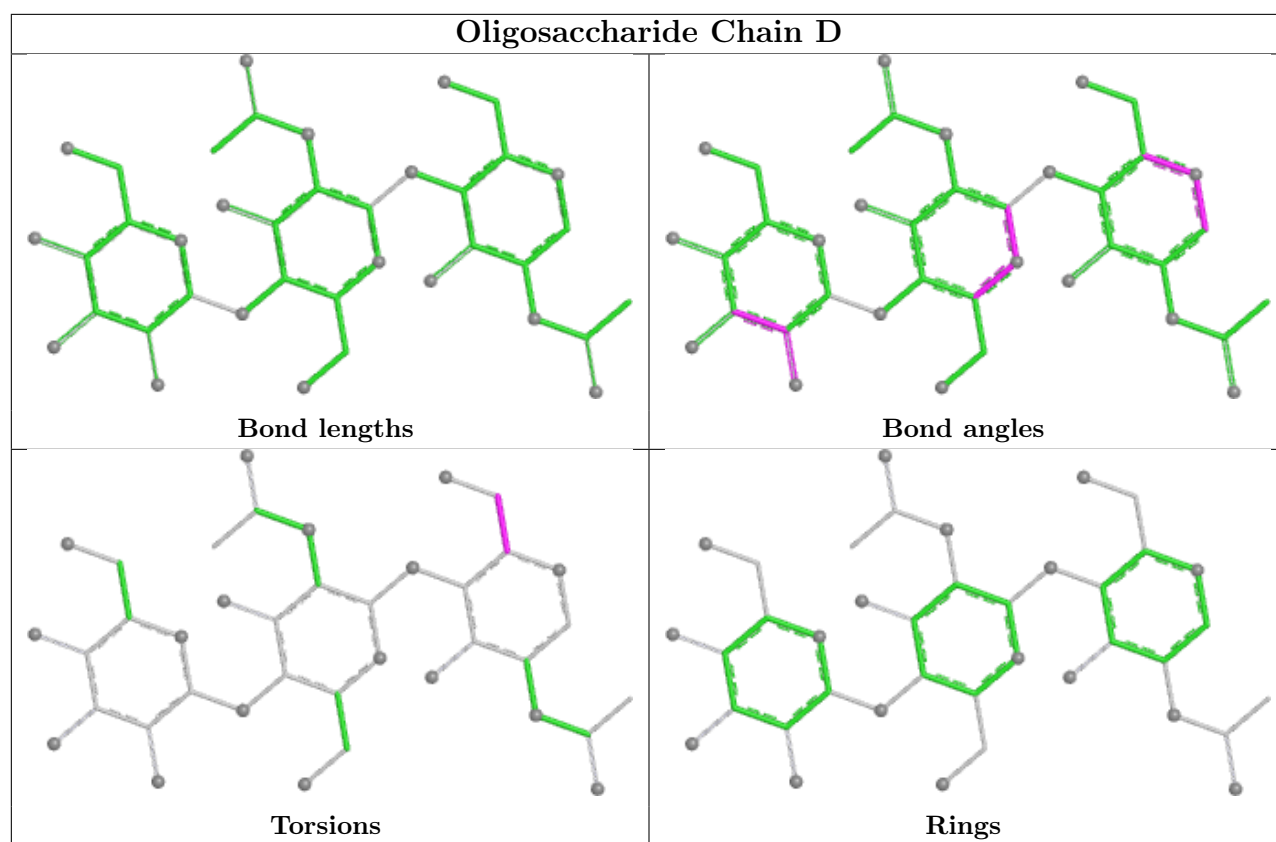
The following is a two-dimensional graphical depiction of Mogul quality analysis of bond lengths, bond angles, torsion angles, and ring geometry for oligosaccharide.

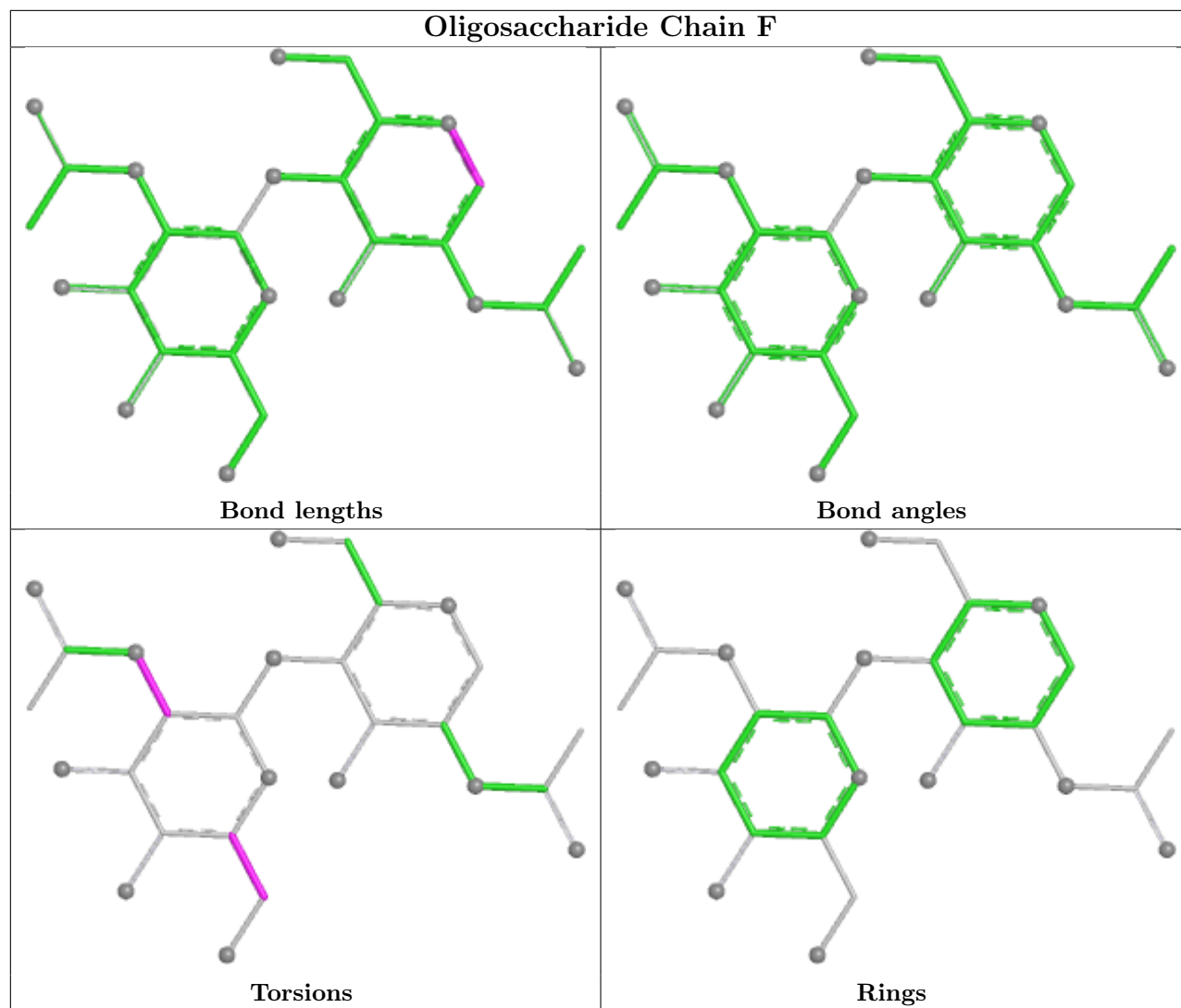


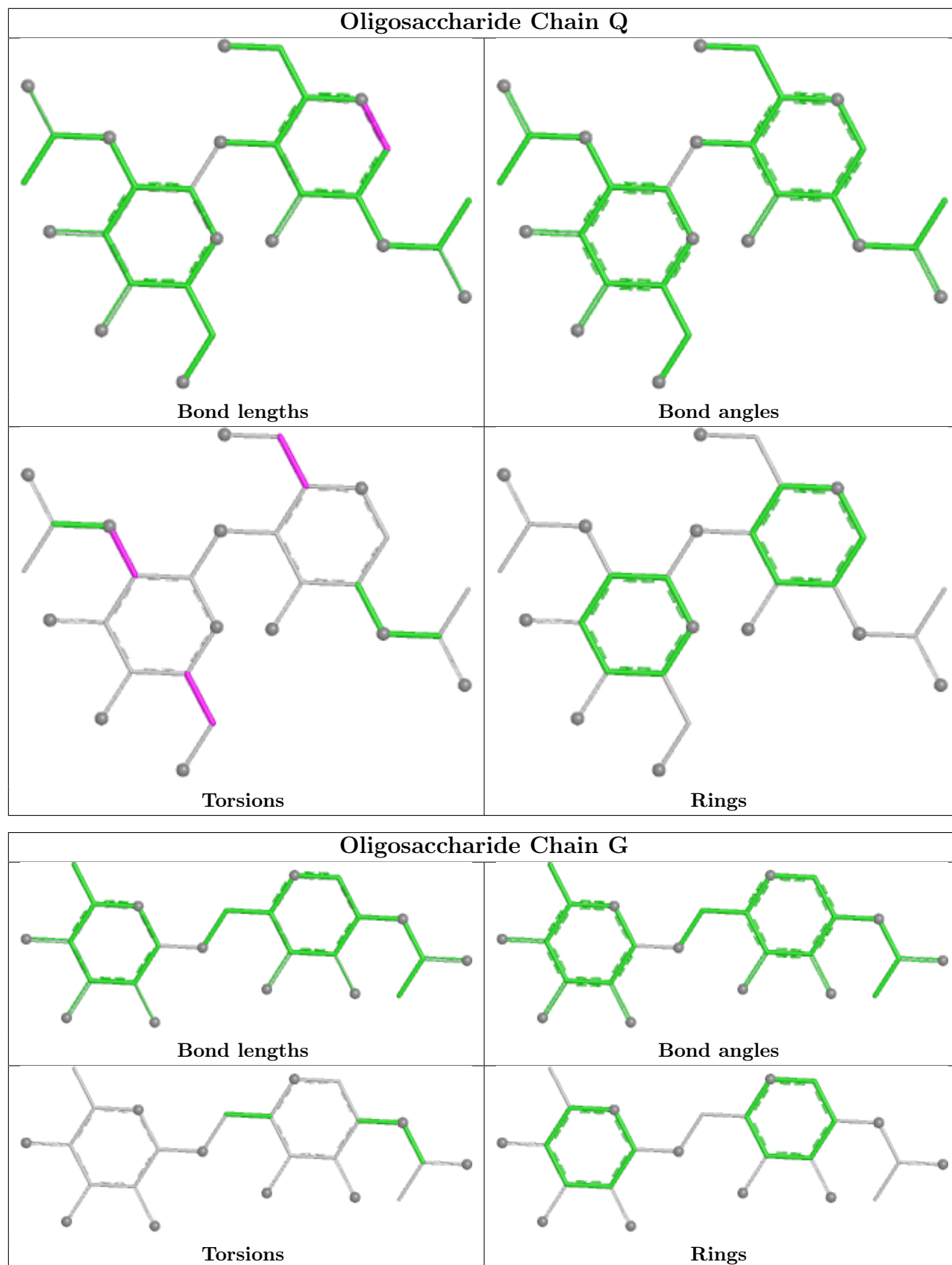


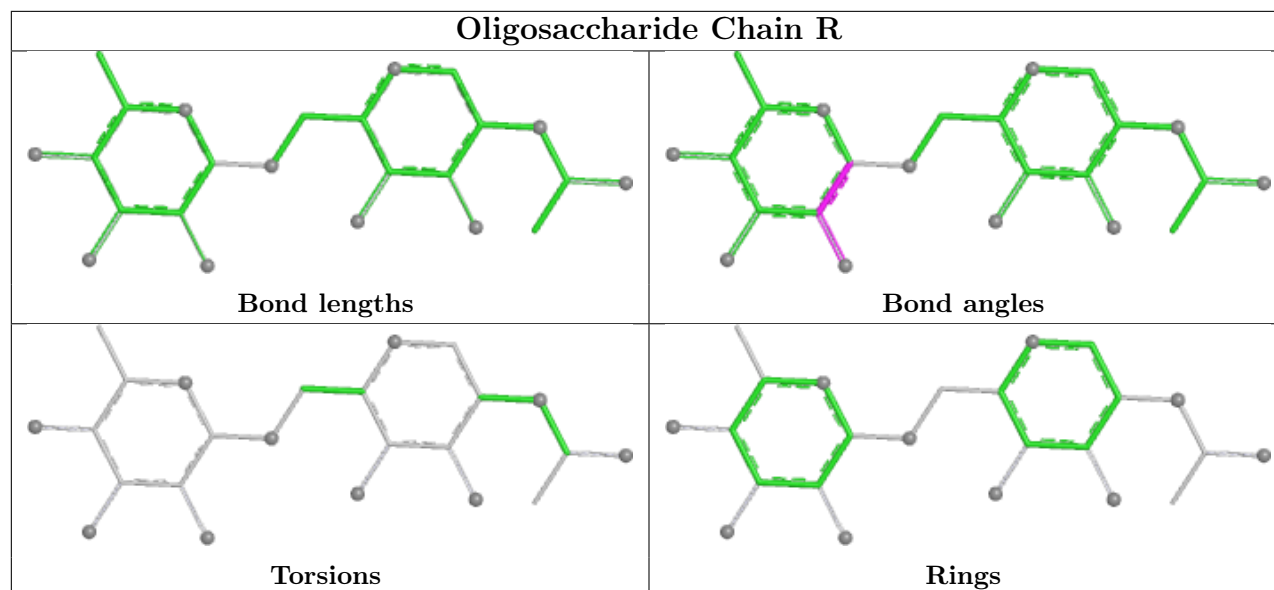












5.6 Ligand geometry [i](#)

4 ligands are modelled in this entry.

In the following table, the Counts columns list the number of bonds (or angles) for which Mogul statistics could be retrieved, the number of bonds (or angles) that are observed in the model and the number of bonds (or angles) that are defined in the Chemical Component Dictionary. The Link column lists molecule types, if any, to which the group is linked. The Z score for a bond length (or angle) is the number of standard deviations the observed value is removed from the expected value. A bond length (or angle) with $|Z| > 2$ is considered an outlier worth inspection. RMSZ is the root-mean-square of all Z scores of the bond lengths (or angles).

Mol	Type	Chain	Res	Link	Bond lengths			Bond angles		
					Counts	RMSZ	# Z > 2	Counts	RMSZ	# Z > 2
9	NAG	B	1014	1	14,14,15	0.23	0	17,19,21	0.58	0
9	NAG	B	1015	-	14,14,15	0.41	0	17,19,21	0.42	0
9	NAG	A	1015	-	14,14,15	0.39	0	17,19,21	0.42	0
9	NAG	A	1014	1	14,14,15	0.29	0	17,19,21	0.56	0

In the following table, the Chirals column lists the number of chiral outliers, the number of chiral centers analysed, the number of these observed in the model and the number defined in the Chemical Component Dictionary. Similar counts are reported in the Torsion and Rings columns. '2' means no outliers of that kind were identified.

Mol	Type	Chain	Res	Link	Chirals	Torsions	Rings
9	NAG	B	1014	1	-	2/6/23/26	0/1/1/1
9	NAG	B	1015	-	-	1/6/23/26	0/1/1/1
9	NAG	A	1015	-	-	1/6/23/26	0/1/1/1
9	NAG	A	1014	1	-	2/6/23/26	0/1/1/1

There are no bond length outliers.

There are no bond angle outliers.

There are no chirality outliers.

5 of 6 torsion outliers are listed below:

Mol	Chain	Res	Type	Atoms
9	A	1014	NAG	O5-C5-C6-O6
9	A	1014	NAG	C4-C5-C6-O6
9	B	1014	NAG	O5-C5-C6-O6
9	B	1014	NAG	C4-C5-C6-O6
9	B	1015	NAG	O5-C5-C6-O6

There are no ring outliers.

No monomer is involved in short contacts.

5.7 Other polymers [i](#)

There are no such residues in this entry.

5.8 Polymer linkage issues [i](#)

There are no chain breaks in this entry.

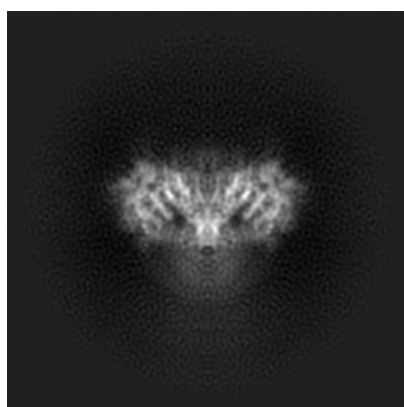
6 Map visualisation [i](#)

This section contains visualisations of the EMDB entry EMD-7462. These allow visual inspection of the internal detail of the map and identification of artifacts.

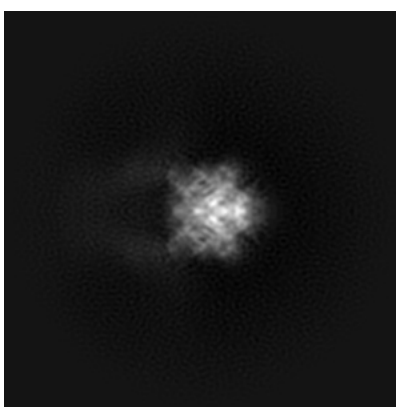
No raw map or half-maps were deposited for this entry and therefore no images, graphs, etc. pertaining to the raw map can be shown.

6.1 Orthogonal projections [i](#)

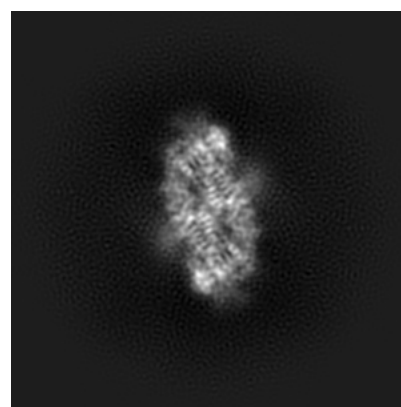
6.1.1 Primary map



X



Y

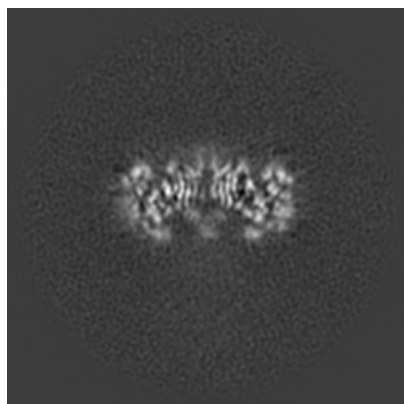


Z

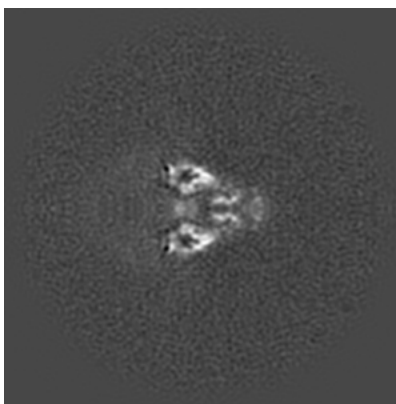
The images above show the map projected in three orthogonal directions.

6.2 Central slices [i](#)

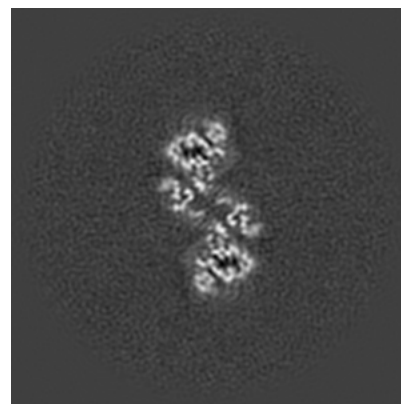
6.2.1 Primary map



X Index: 144



Y Index: 144

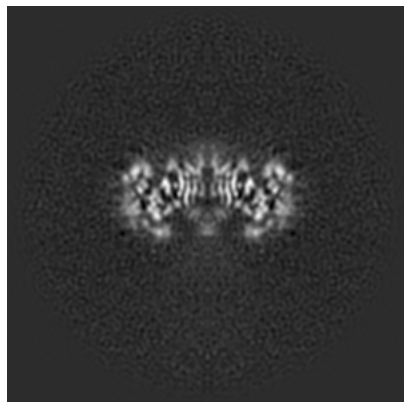


Z Index: 144

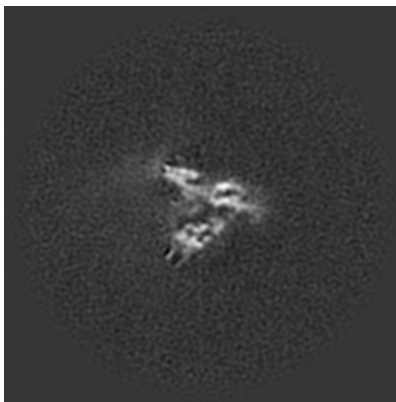
The images above show central slices of the map in three orthogonal directions.

6.3 Largest variance slices [\(i\)](#)

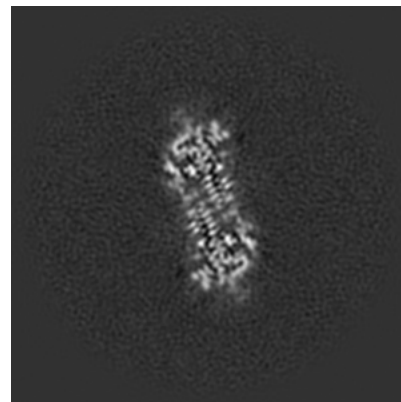
6.3.1 Primary map



X Index: 143



Y Index: 150

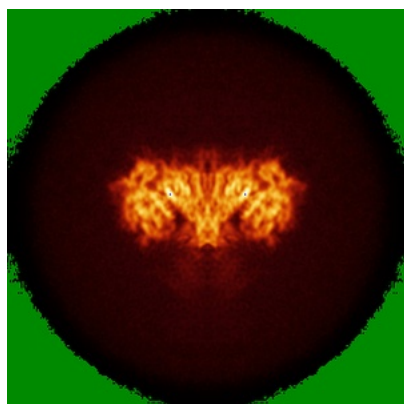


Z Index: 153

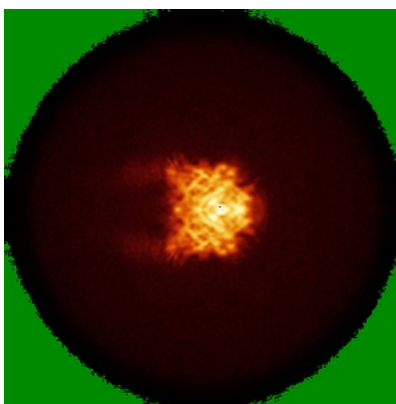
The images above show the largest variance slices of the map in three orthogonal directions.

6.4 Orthogonal standard-deviation projections (False-color) [\(i\)](#)

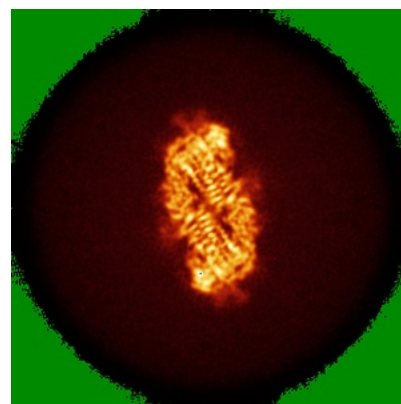
6.4.1 Primary map



X



Y



Z

The images above show the map standard deviation projections with false color in three orthogonal directions. Minimum values are shown in green, max in blue, and dark to light orange shades represent small to large values respectively.

6.5 Orthogonal surface views

This section was not generated.

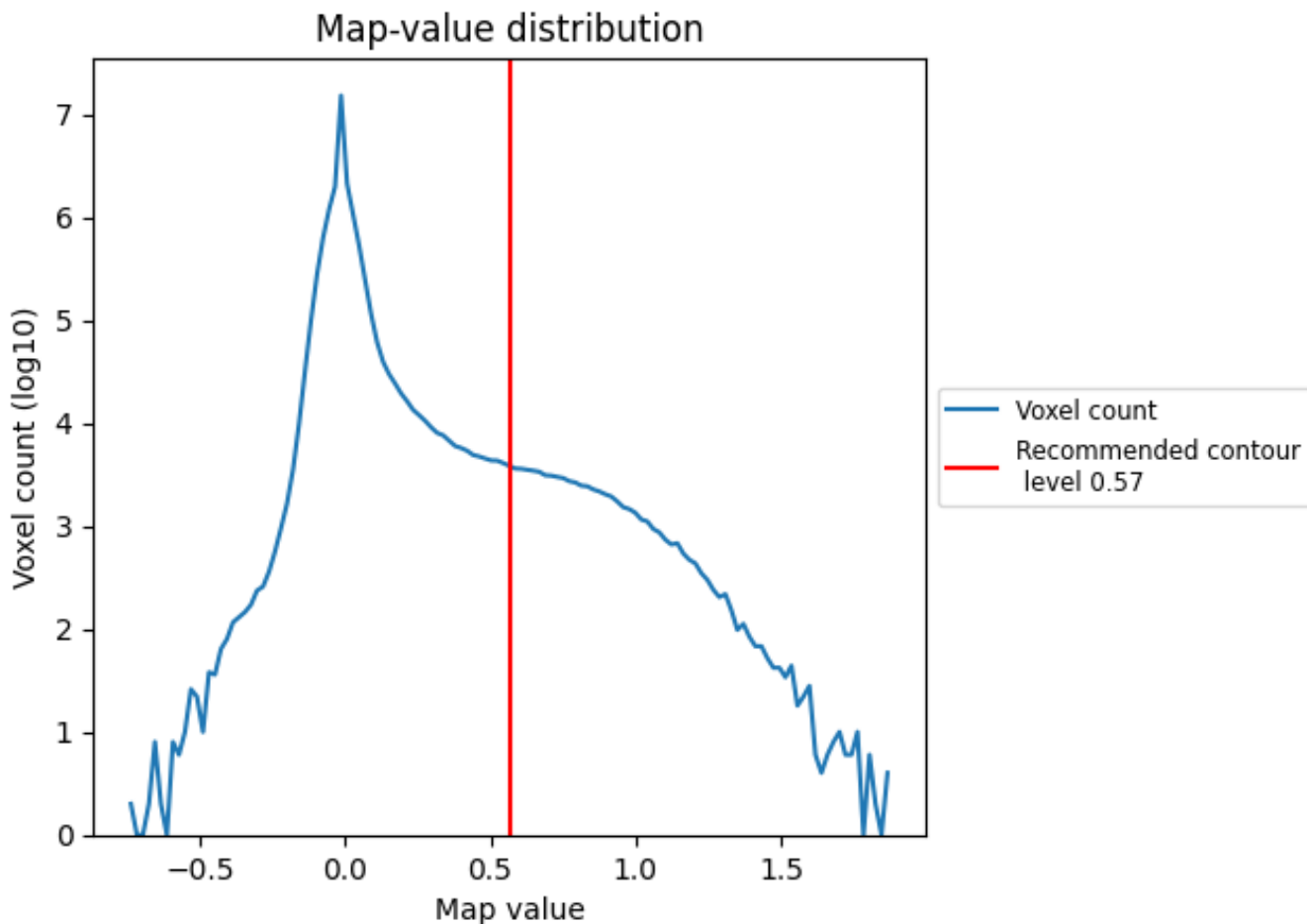
6.6 Mask visualisation

This section was not generated. No masks/segmentation were deposited.

7 Map analysis [i](#)

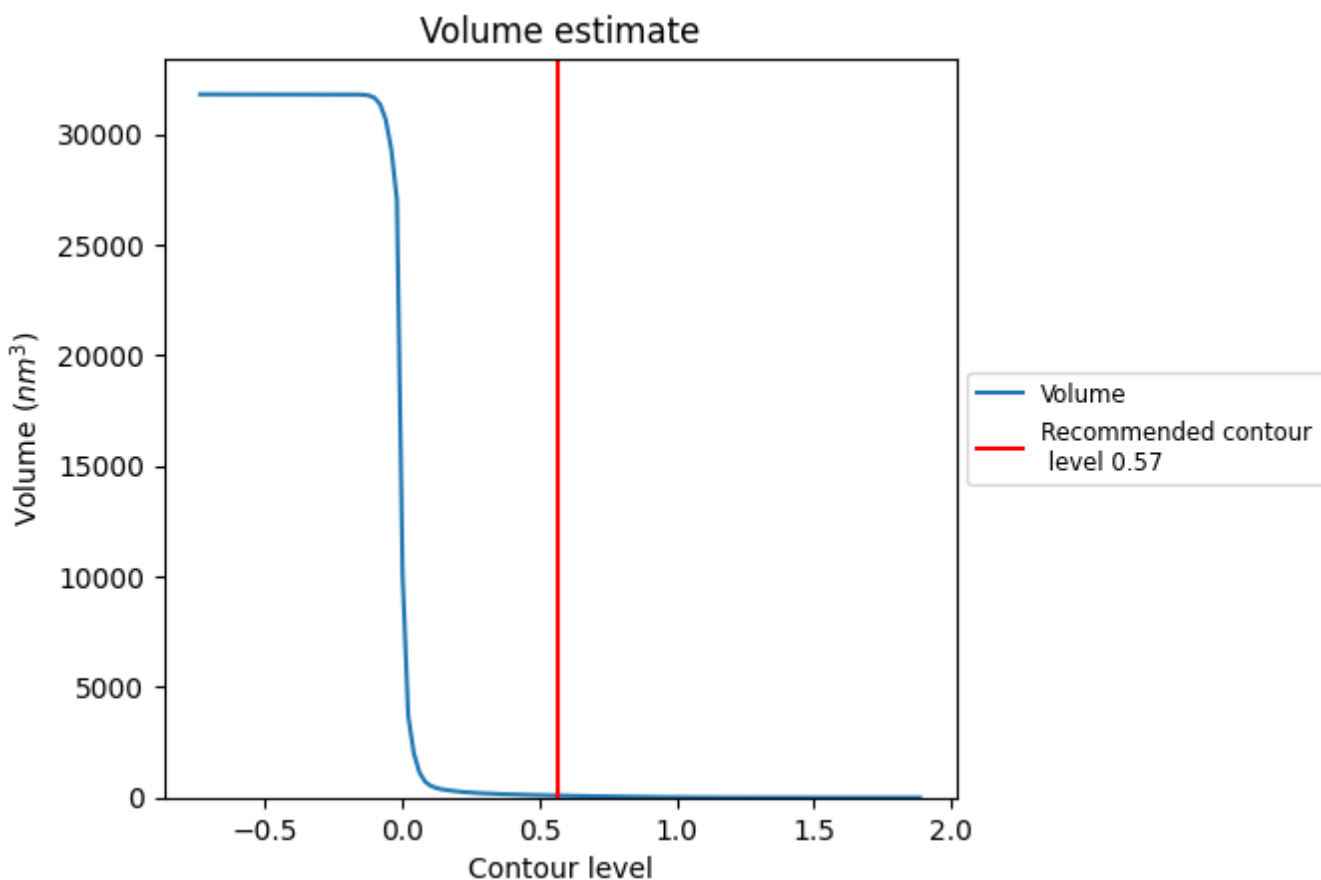
This section contains the results of statistical analysis of the map.

7.1 Map-value distribution [i](#)



The map-value distribution is plotted in 128 intervals along the x-axis. The y-axis is logarithmic. A spike in this graph at zero usually indicates that the volume has been masked.

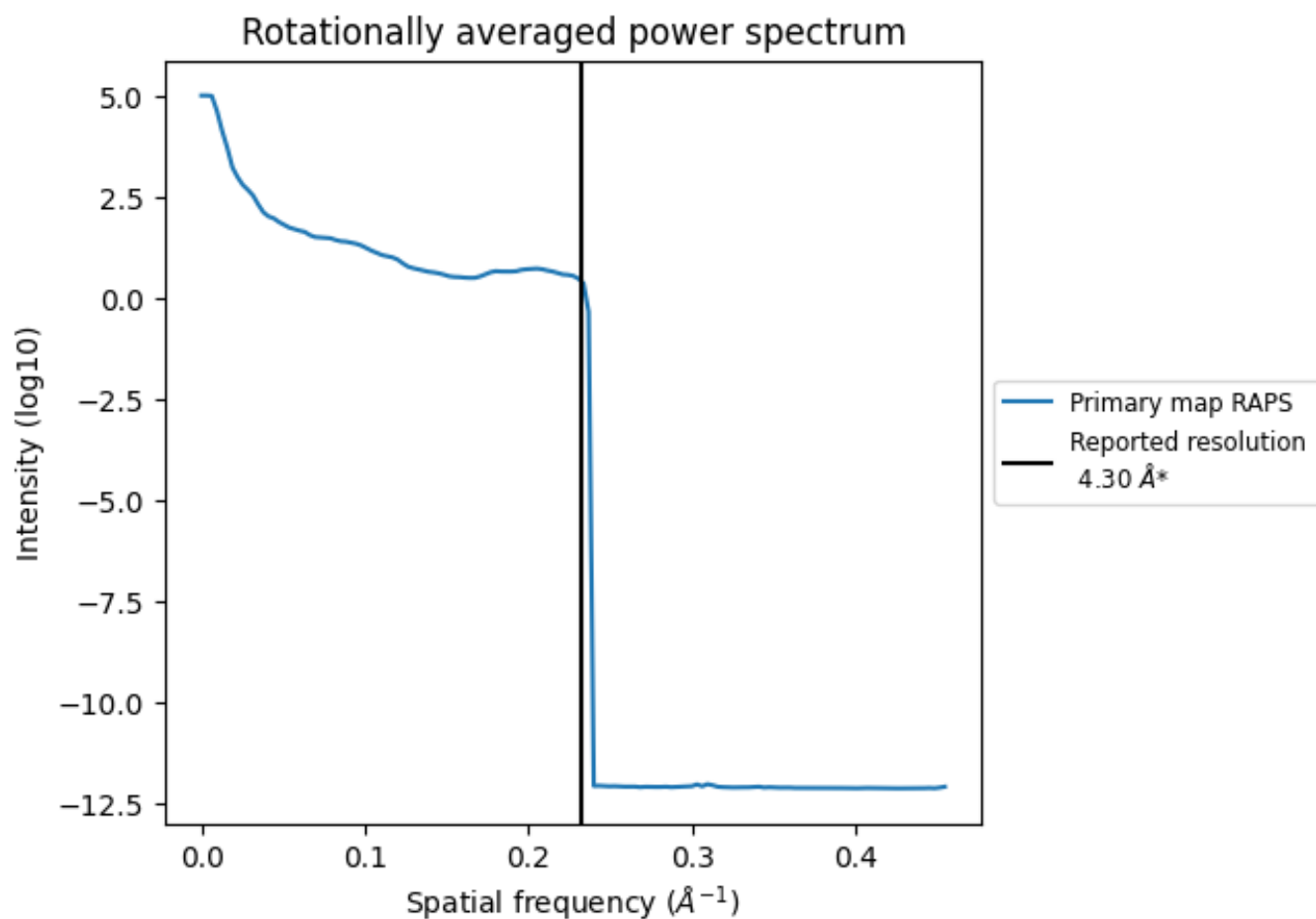
7.2 Volume estimate [\(i\)](#)



The volume at the recommended contour level is 89 nm³; this corresponds to an approximate mass of 81 kDa.

The volume estimate graph shows how the enclosed volume varies with the contour level. The recommended contour level is shown as a vertical line and the intersection between the line and the curve gives the volume of the enclosed surface at the given level.

7.3 Rotationally averaged power spectrum [i](#)

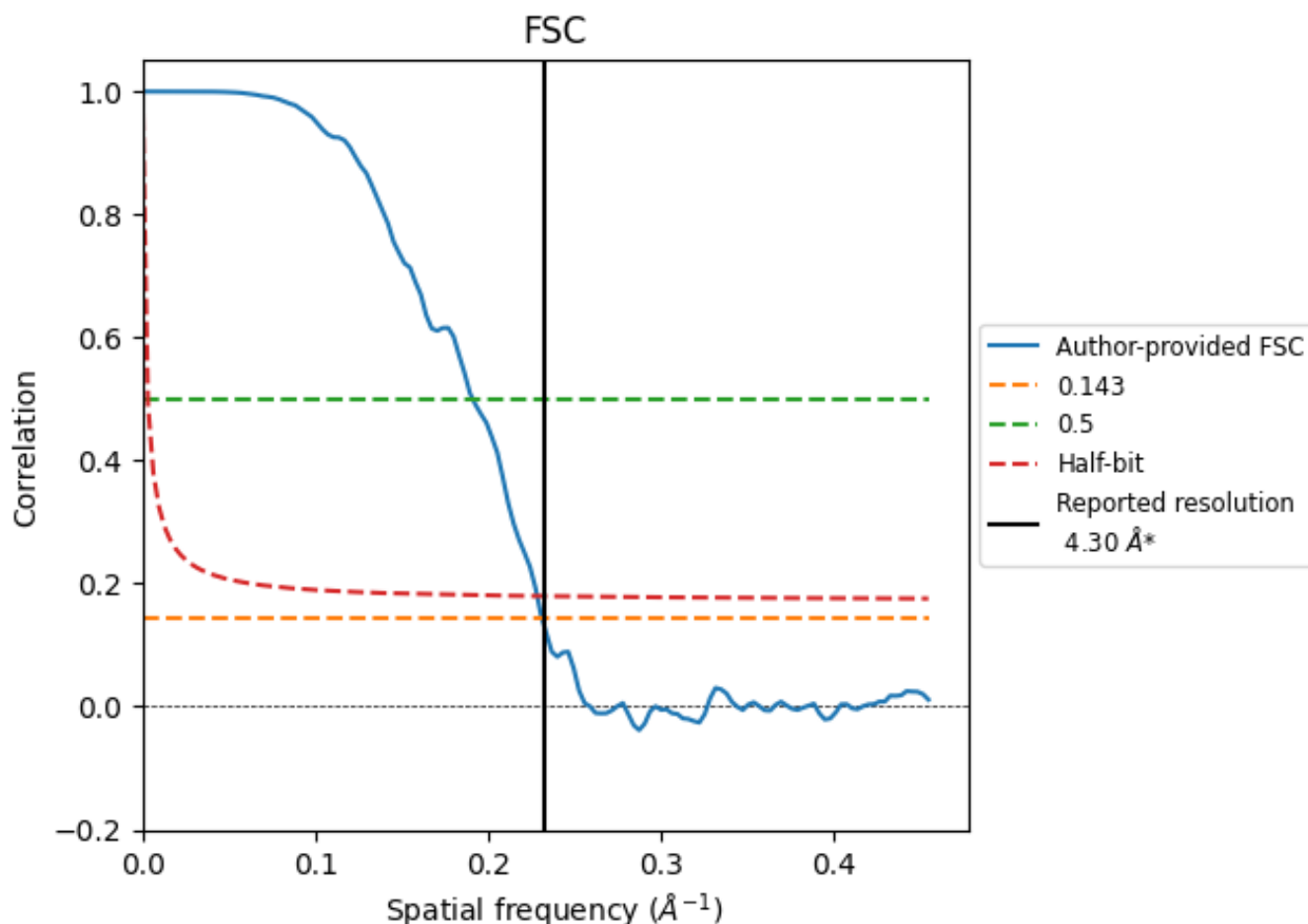


*Reported resolution corresponds to spatial frequency of 0.233 \AA^{-1}

8 Fourier-Shell correlation [\(i\)](#)

Fourier-Shell Correlation (FSC) is the most commonly used method to estimate the resolution of single-particle and subtomogram-averaged maps. The shape of the curve depends on the imposed symmetry, mask and whether or not the two 3D reconstructions used were processed from a common reference. The reported resolution is shown as a black line. A curve is displayed for the half-bit criterion in addition to lines showing the 0.143 gold standard cut-off and 0.5 cut-off.

8.1 FSC [\(i\)](#)



*Reported resolution corresponds to spatial frequency of 0.233 Å⁻¹

8.2 Resolution estimates [i](#)

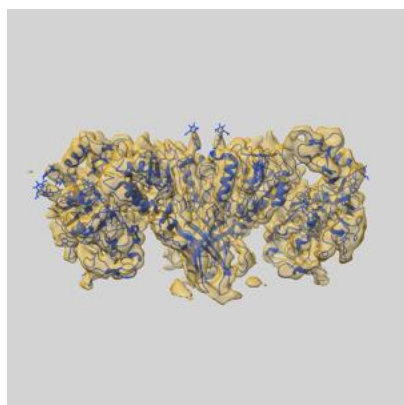
Resolution estimate (Å)	Estimation criterion (FSC cut-off)		
	0.143	0.5	Half-bit
Reported by author	4.30	-	-
Author-provided FSC curve	4.33	5.24	4.38
Unmasked-calculated*	-	-	-

*Resolution estimate based on FSC curve calculated by comparison of deposited half-maps.

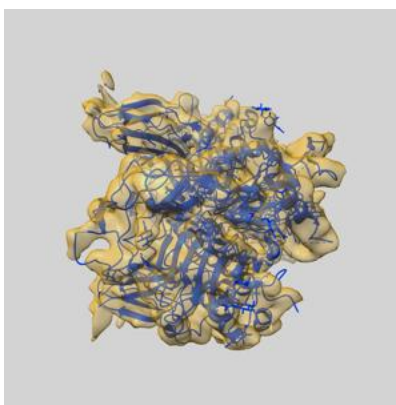
9 Map-model fit [i](#)

This section contains information regarding the fit between EMDB map EMD-7462 and PDB model 6CE9. Per-residue inclusion information can be found in section 3 on page 8.

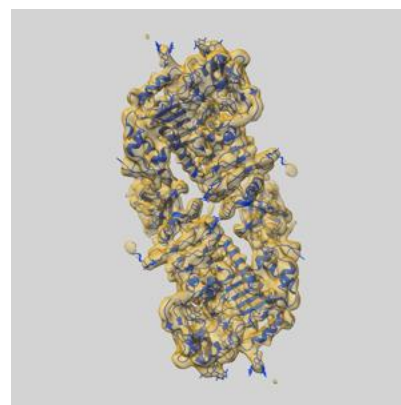
9.1 Map-model overlay [i](#)



X



Y



Z

The images above show the 3D surface view of the map at the recommended contour level 0.57 at 50% transparency in yellow overlaid with a ribbon representation of the model coloured in blue. These images allow for the visual assessment of the quality of fit between the atomic model and the map.

9.2 Q-score mapped to coordinate model [\(i\)](#)

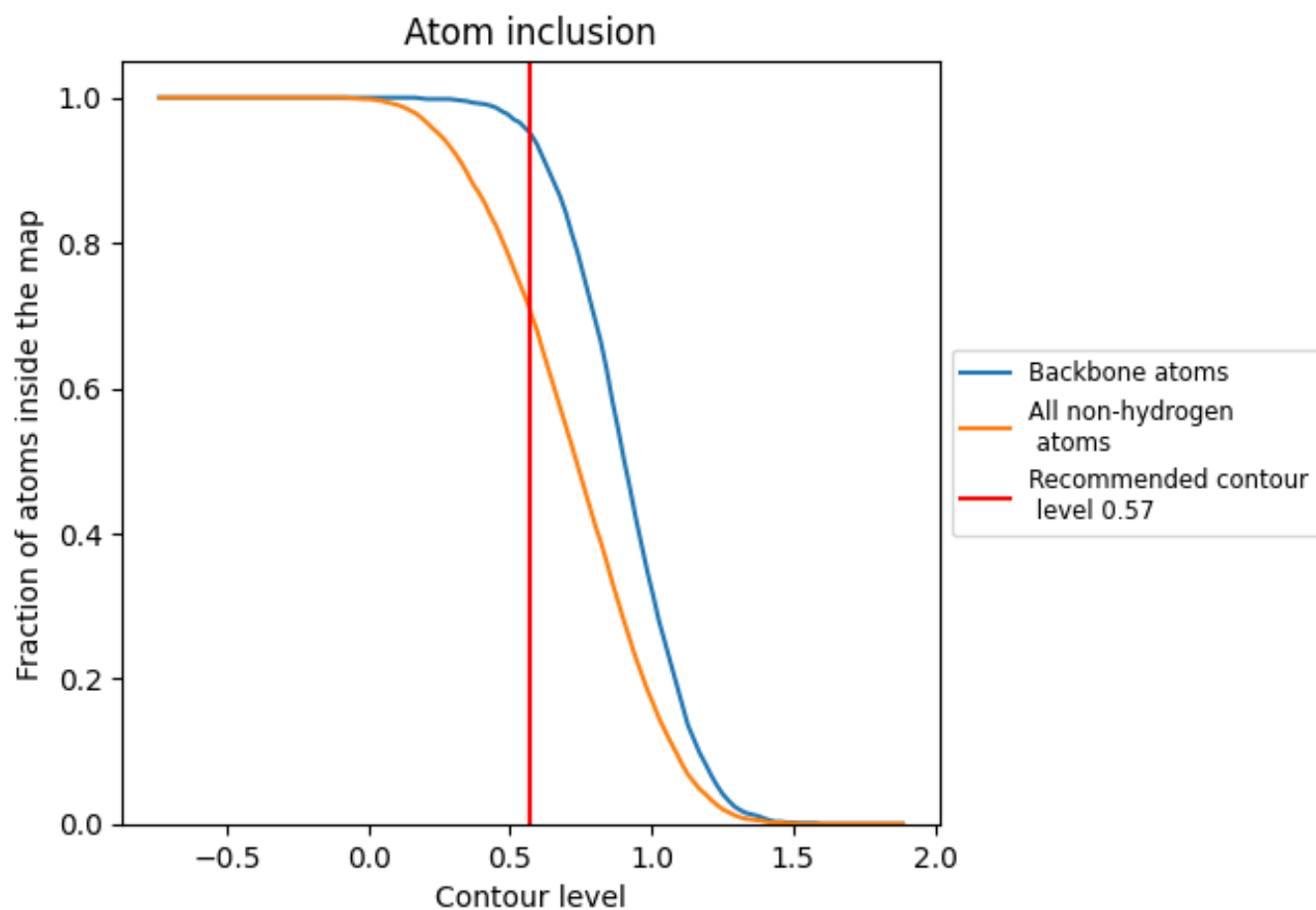


The images above show the model with each residue coloured according to its Q-score. This shows their resolvability in the map with higher Q-score values reflecting better resolvability. Please note: Q-score is calculating the resolvability of atoms, and thus high values are only expected at resolutions at which atoms can be resolved. Low Q-score values may therefore be expected for many entries.

9.3 Atom inclusion mapped to coordinate model [\(i\)](#)

This section was not generated.
































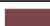






9.4 Atom inclusion [i](#)



At the recommended contour level, 95% of all backbone atoms, 71% of all non-hydrogen atoms, are inside the map.

9.5 Map-model fit summary

The table lists the average atom inclusion at the recommended contour level (0.57) and Q-score for the entire model and for each chain.

Chain	Atom inclusion	Q-score
All	 0.7100	 0.3160
A	 0.7250	 0.3220
B	 0.7230	 0.3210
C	 0.3680	 0.2430
D	 0.6920	 0.4300
E	 0.5260	 0.3710
F	 0.3570	 0.2790
G	 0.2500	 0.1760
H	 0.3950	 0.2360
I	 0.6920	 0.4350
J	 0.5000	 0.3450
K	 0.7020	 0.2930
L	 0.6520	 0.2710
M	 0.6810	 0.2830
N	 0.7020	 0.2990
O	 0.6610	 0.2790
P	 0.6690	 0.2810
Q	 0.3570	 0.2950
R	 0.2500	 0.1920

