



Full wwPDB X-ray Structure Validation Report ⓘ

Mar 6, 2026 – 08:48 PM UTC

PDB ID : 2CFA / pdb_00002cfa
Title : Structure of viral flavin-dependant thymidylate synthase ThyX
Authors : Graziani, S.; Bernauer, J.; Skouloubris, S.; Graille, M.; Zhou, C.-Z.; Marchand, C.; Decottignies, P.; van Tilbeurgh, H.; Myllykallio, H.; Liebl, U.
Deposited on : 2006-02-17
Resolution : 2.30 Å(reported)

This is a Full wwPDB X-ray Structure Validation Report for a publicly released PDB entry.

We welcome your comments at validation@mail.wwpdb.org

A user guide is available at

<https://www.wwpdb.org/validation/2017/XrayValidationReportHelp>

with specific help available everywhere you see the ⓘ symbol.

The types of validation reports are described at

<http://www.wwpdb.org/validation/2017/FAQs#types>.

The following versions of software and data (see [references ⓘ](#)) were used in the production of this report:

MolProbity : 4-5-2 with Phenix2.0
Mogul : 2022.3.0, CSD as543be (2022)
Xtrriage (Phenix) : 2.0
EDS : 3.0
Buster-report : wwPDB partial adaption of 1.1.7 (2018)
Percentile statistics : 20250101.v01 (using entries in the PDB archive January 1st 2025)
CCP4 : 9.0.010 (Gargrove)
Density-Fitness : 1.0.12
Ideal geometry (proteins) : Engh & Huber (2001)
Ideal geometry (DNA, RNA) : Parkinson et al. (1996)
Validation Pipeline (wwPDB-VP) : 2.49

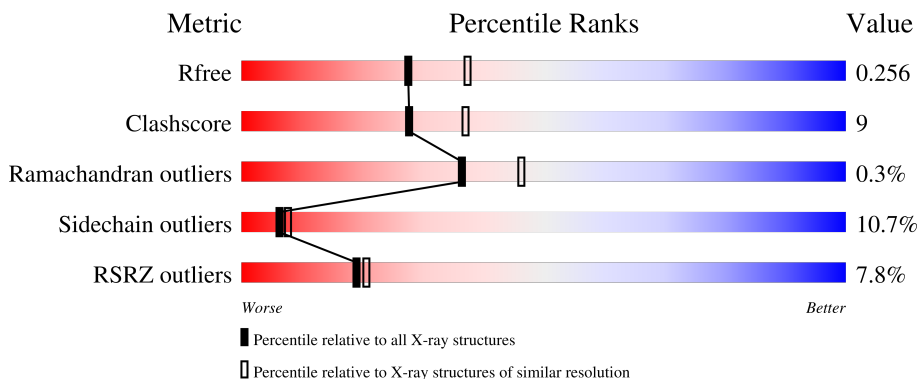
1 Overall quality at a glance

The following experimental techniques were used to determine the structure:

X-RAY DIFFRACTION

The reported resolution of this entry is 2.30 Å.

Percentile scores (ranging between 0-100) for global validation metrics of the entry are shown in the following graphic. The table shows the number of entries on which the scores are based.



Metric	Whole archive (#Entries)	Similar resolution (#Entries, resolution range(Å))
R_{free}	180053	6319 (2.30-2.30)
Clashscore	190562	6919 (2.30-2.30)
Ramachandran outliers	187476	6854 (2.30-2.30)
Sidechain outliers	187428	6854 (2.30-2.30)
RSRZ outliers	180081	6325 (2.30-2.30)

The table below summarises the geometric issues observed across the polymeric chains and their fit to the electron density. The red, orange, yellow and green segments of the lower bar indicate the fraction of residues that contain outliers for ≥ 3 , 2, 1 and 0 types of geometric quality criteria respectively. A grey segment represents the fraction of residues that are not modelled. The numeric value for each fraction is indicated below the corresponding segment, with a dot representing fractions $\leq 5\%$. The upper red bar (where present) indicates the fraction of residues that have poor fit to the electron density. The numeric value is given above the bar.

Mol	Chain	Length	Quality of chain
1	A	217	 9% 64% 16% 17%
2	B	217	 4% 61% 19% 18%

2 Entry composition [i](#)

There are 4 unique types of molecules in this entry. The entry contains 3201 atoms, of which 0 are hydrogens and 0 are deuteriums.

In the tables below, the ZeroOcc column contains the number of atoms modelled with zero occupancy, the AltConf column contains the number of residues with at least one atom in alternate conformation and the Trace column contains the number of residues modelled with at most 2 atoms.

- Molecule 1 is a protein called THYMIDYLATE SYNTHASE.

Mol	Chain	Residues	Atoms					ZeroOcc	AltConf	Trace
			Total	C	N	O	S			
1	A	180	1460	935	252	265	8	0	0	0

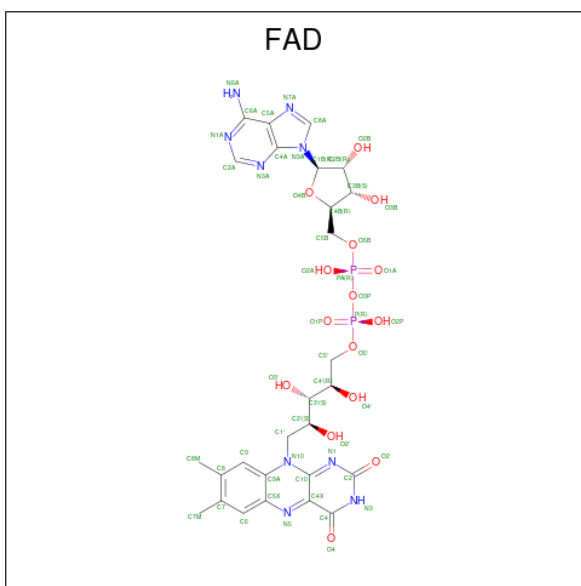
- Molecule 2 is a protein called THYMIDYLATE SYNTHASE.

Mol	Chain	Residues	Atoms					ZeroOcc	AltConf	Trace
			Total	C	N	O	S			
2	B	179	1454	932	250	264	8	1	0	0

There is a discrepancy between the modelled and reference sequences:

Chain	Residue	Modelled	Actual	Comment	Reference
B	77	ILE	LEU	conflict	UNP O41156

- Molecule 3 is FLAVIN-ADENINE DINUCLEOTIDE (CCD ID: FAD) (formula: C₂₇H₃₃N₉O₁₅P₂).



Mol	Chain	Residues	Atoms					ZeroOcc	AltConf
3	A	1	Total	C	N	O	P	0	0
			53	27	9	15	2		
3	B	1	Total	C	N	O	P	0	0
			53	27	9	15	2		

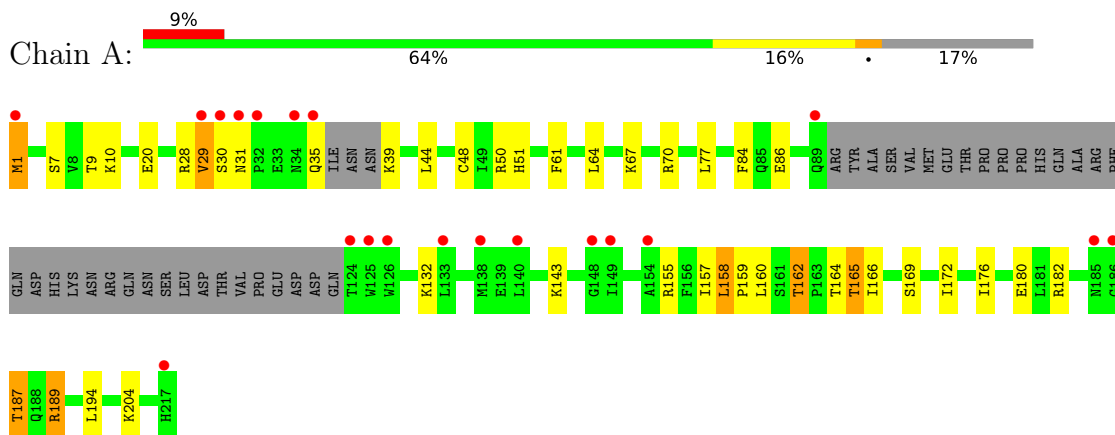
- Molecule 4 is water.

Mol	Chain	Residues	Atoms		ZeroOcc	AltConf
4	A	106	Total	O	0	0
			106	106		
4	B	75	Total	O	0	0
			75	75		

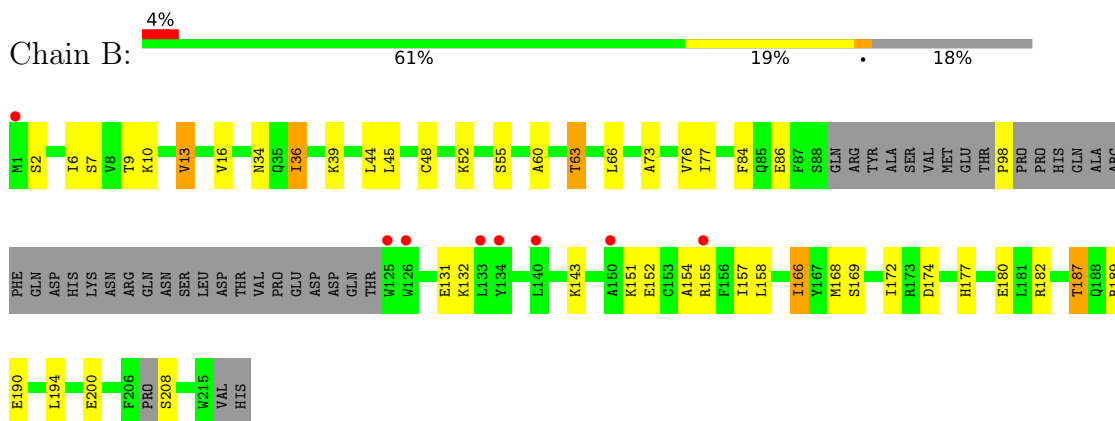
3 Residue-property plots [i](#)

These plots are drawn for all protein, RNA, DNA and oligosaccharide chains in the entry. The first graphic for a chain summarises the proportions of the various outlier classes displayed in the second graphic. The second graphic shows the sequence view annotated by issues in geometry and electron density. Residues are color-coded according to the number of geometric quality criteria for which they contain at least one outlier: green = 0, yellow = 1, orange = 2 and red = 3 or more. A red dot above a residue indicates a poor fit to the electron density ($RSRZ > 2$). Stretches of 2 or more consecutive residues without any outlier are shown as a green connector. Residues present in the sample, but not in the model, are shown in grey.

- Molecule 1: THYMIDYLATE SYNTHASE



- Molecule 2: THYMIDYLATE SYNTHASE



4 Data and refinement statistics

Property	Value	Source
Space group	P 21 21 2	Depositor
Cell constants a, b, c, α , β , γ	69.26Å 76.99Å 93.44Å 90.00° 90.00° 90.00°	Depositor
Resolution (Å)	20.00 – 2.30 20.00 – 2.30	Depositor EDS
% Data completeness (in resolution range)	98.6 (20.00-2.30) 98.4 (20.00-2.30)	Depositor EDS
R_{merge}	0.09	Depositor
R_{sym}	(Not available)	Depositor
$\langle I/\sigma(I) \rangle$ ¹	1.92 (at 2.29Å)	Xtrriage
Refinement program	REFMAC 5.2.0019	Depositor
R, R_{free}	0.213 , 0.262 0.207 , 0.256	Depositor DCC
R_{free} test set	1124 reflections (4.99%)	wwPDB-VP
Wilson B-factor (Å ²)	32.2	Xtrriage
Anisotropy	0.795	Xtrriage
Bulk solvent k_{sol} (e/Å ³), B_{sol} (Å ²)	0.34 , 41.7	EDS
L-test for twinning ²	$\langle L \rangle = 0.50$, $\langle L^2 \rangle = 0.33$	Xtrriage
Estimated twinning fraction	No twinning to report.	Xtrriage
F_o, F_c correlation	0.94	EDS
Total number of atoms	3201	wwPDB-VP
Average B, all atoms (Å ²)	41.0	wwPDB-VP

Xtrriage's analysis on translational NCS is as follows: *The largest off-origin peak in the Patterson function is 6.49% of the height of the origin peak. No significant pseudotranslation is detected.*

¹Intensities estimated from amplitudes.

²Theoretical values of $\langle |L| \rangle$, $\langle L^2 \rangle$ for acentric reflections are 0.5, 0.333 respectively for untwinned datasets, and 0.375, 0.2 for perfectly twinned datasets.

5 Model quality [i](#)

5.1 Standard geometry [i](#)

Bond lengths and bond angles in the following residue types are not validated in this section: FAD, CME

The Z score for a bond length (or angle) is the number of standard deviations the observed value is removed from the expected value. A bond length (or angle) with $|Z| > 5$ is considered an outlier worth inspection. RMSZ is the root-mean-square of all Z scores of the bond lengths (or angles).

Mol	Chain	Bond lengths		Bond angles	
		RMSZ	# Z >5	RMSZ	# Z >5
1	A	0.59	0/1482	0.88	0/2000
2	B	0.59	0/1473	0.87	3/1983 (0.2%)
All	All	0.59	0/2955	0.88	3/3983 (0.1%)

There are no bond length outliers.

All (3) bond angle outliers are listed below:

Mol	Chain	Res	Type	Atoms	Z	Observed(°)	Ideal(°)
2	B	151	LYS	N-CA-CB	8.49	124.83	110.49
2	B	2	SER	N-CA-C	5.55	116.69	108.86
2	B	6	ILE	N-CA-C	-5.28	107.62	111.90

There are no chirality outliers.

There are no planarity outliers.

5.2 Too-close contacts [i](#)

In the following table, the Non-H and H(model) columns list the number of non-hydrogen atoms and hydrogen atoms in the chain respectively. The H(added) column lists the number of hydrogen atoms added and optimized by MolProbity. The Clashes column lists the number of clashes within the asymmetric unit, whereas Symm-Clashes lists symmetry-related clashes.

Mol	Chain	Non-H	H(model)	H(added)	Clashes	Symm-Clashes
1	A	1460	0	1456	22	0
2	B	1454	0	1456	33	0
3	A	53	0	31	1	0
3	B	53	0	31	2	0
4	A	106	0	0	2	0
4	B	75	0	0	6	0

Continued on next page...

Continued from previous page...

Mol	Chain	Non-H	H(model)	H(added)	Clashes	Symm-Clashes
All	All	3201	0	2974	54	0

The all-atom clashscore is defined as the number of clashes found per 1000 atoms (including hydrogen atoms). The all-atom clashscore for this structure is 9.

All (54) close contacts within the same asymmetric unit are listed below, sorted by their clash magnitude.

Atom-1	Atom-2	Interatomic distance (Å)	Clash overlap (Å)
2:B:98:PRO:C	2:B:208:SER:N	1.74	1.45
1:A:159:PRO:O	1:A:162:THR:HG22	1.50	1.11
2:B:76:VAL:HG11	2:B:168:MET:CE	2.01	0.91
2:B:34:ASN:HB3	2:B:36:ILE:HG22	1.50	0.91
2:B:66:LEU:HD11	2:B:168:MET:HE3	1.52	0.88
2:B:66:LEU:CD1	2:B:168:MET:HE3	2.05	0.86
2:B:76:VAL:CG1	2:B:168:MET:CE	2.59	0.79
2:B:76:VAL:CG1	2:B:168:MET:HE2	2.12	0.78
2:B:76:VAL:HG11	2:B:168:MET:HE2	1.66	0.76
1:A:67:LYS:HD3	1:A:165:THR:HB	1.68	0.75
1:A:1:MET:N	1:A:67:LYS:O	2.20	0.74
2:B:76:VAL:HG11	2:B:168:MET:HE1	1.67	0.73
2:B:66:LEU:HD11	2:B:168:MET:CE	2.23	0.67
2:B:182:ARG:HA	2:B:187:THR:HG21	1.77	0.65
2:B:76:VAL:CG1	2:B:168:MET:HE1	2.25	0.65
1:A:28:ARG:C	1:A:30:SER:H	2.08	0.61
1:A:182:ARG:HA	1:A:187:THR:HG21	1.84	0.60
2:B:180:GLU:HG3	4:B:2057:HOH:O	2.02	0.59
1:A:29:VAL:HG22	1:A:29:VAL:O	2.03	0.58
2:B:73:ALA:O	2:B:77:ILE:HG12	2.03	0.57
2:B:13:VAL:HG22	2:B:16:VAL:HB	1.85	0.57
2:B:177:HIS:HD2	4:B:2040:HOH:O	1.86	0.57
2:B:174:ASP:OD2	4:B:2055:HOH:O	2.16	0.57
2:B:84:PHE:CE2	2:B:168:MET:HG3	2.40	0.57
2:B:66:LEU:HD12	2:B:168:MET:HE3	1.86	0.56
2:B:63:THR:HB	2:B:169:SER:OG	2.05	0.56
2:B:66:LEU:CD1	2:B:168:MET:CE	2.80	0.55
2:B:60:ALA:HB3	2:B:172:ILE:HG12	1.87	0.55
2:B:63:THR:CG2	4:B:2008:HOH:O	2.56	0.53
1:A:28:ARG:O	1:A:31:ASN:OD1	2.27	0.51
1:A:9:THR:HG23	2:B:7:SER:OG	2.10	0.51
2:B:154:ALA:O	2:B:157:ILE:HG12	2.11	0.51
1:A:10:LYS:HD3	2:B:10:LYS:HD3	1.93	0.51

Continued on next page...

Continued from previous page...

Atom-1	Atom-2	Interatomic distance (Å)	Clash overlap (Å)
1:A:70:ARG:HD2	1:A:164:THR:HB	1.93	0.50
1:A:7:SER:OG	2:B:9:THR:HG23	2.11	0.50
2:B:86:GLU:HG2	2:B:166:ILE:HG22	1.93	0.50
2:B:7:SER:HB3	2:B:63:THR:HG23	1.94	0.49
2:B:36:ILE:HG13	2:B:39:LYS:HD2	1.96	0.48
3:A:1219:FAD:H9	3:A:1219:FAD:H2'	1.95	0.48
1:A:182:ARG:HD3	1:A:187:THR:HG21	1.96	0.48
1:A:86:GLU:HG2	1:A:166:ILE:HG22	1.95	0.47
1:A:39:LYS:HB2	4:A:2018:HOH:O	2.15	0.47
1:A:176:ILE:O	1:A:180:GLU:HB2	2.16	0.46
1:A:204:LYS:HB3	1:A:204:LYS:HE3	1.82	0.46
3:B:1217:FAD:O4'	3:B:1217:FAD:H1'2	2.19	0.43
1:A:158:LEU:HB3	1:A:162:THR:HG21	2.01	0.42
3:B:1217:FAD:H9	3:B:1217:FAD:H2'	2.00	0.42
1:A:20:GLU:OE1	4:A:2012:HOH:O	2.22	0.41
1:A:189:ARG:N	1:A:189:ARG:HD3	2.34	0.41
1:A:61:PHE:CE1	1:A:169:SER:HB3	2.55	0.41
1:A:84:PHE:O	2:B:55:SER:HB2	2.19	0.41
1:A:50:ARG:HD3	1:A:51:HIS:CE1	2.56	0.41
2:B:52:LYS:HE3	4:B:2032:HOH:O	2.21	0.41
2:B:143:LYS:HB3	4:B:2052:HOH:O	2.20	0.40

There are no symmetry-related clashes.

5.3 Torsion angles [i](#)

5.3.1 Protein backbone [i](#)

In the following table, the Percentiles column shows the percent Ramachandran outliers of the chain as a percentile score with respect to all X-ray entries followed by that with respect to entries of similar resolution.

The Analysed column shows the number of residues for which the backbone conformation was analysed, and the total number of residues.

Mol	Chain	Analysed	Favoured	Allowed	Outliers	Percentiles	
1	A	173/217 (80%)	168 (97%)	4 (2%)	1 (1%)	21	27
2	B	169/217 (78%)	169 (100%)	0	0	100	100
All	All	342/434 (79%)	337 (98%)	4 (1%)	1 (0%)	36	46

All (1) Ramachandran outliers are listed below:

Mol	Chain	Res	Type
1	A	29	VAL

5.3.2 Protein sidechains [i](#)

In the following table, the Percentiles column shows the percent sidechain outliers of the chain as a percentile score with respect to all X-ray entries followed by that with respect to entries of similar resolution.

The Analysed column shows the number of residues for which the sidechain conformation was analysed, and the total number of residues.

Mol	Chain	Analysed	Rotameric	Outliers	Percentiles
1	A	154/190 (81%)	137 (89%)	17 (11%)	6 7
2	B	154/190 (81%)	138 (90%)	16 (10%)	7 8
All	All	308/380 (81%)	275 (89%)	33 (11%)	6 8

All (33) residues with a non-rotameric sidechain are listed below:

Mol	Chain	Res	Type
1	A	1	MET
1	A	35	GLN
1	A	44	LEU
1	A	64	LEU
1	A	77	LEU
1	A	132	LYS
1	A	143	LYS
1	A	155	ARG
1	A	157	ILE
1	A	158	LEU
1	A	160	LEU
1	A	162	THR
1	A	165	THR
1	A	172	ILE
1	A	187	THR
1	A	189	ARG
1	A	194	LEU
2	B	13	VAL
2	B	36	ILE
2	B	44	LEU
2	B	45	LEU
2	B	63	THR

Continued on next page...

Continued from previous page...

Mol	Chain	Res	Type
2	B	131	GLU
2	B	132	LYS
2	B	152	GLU
2	B	155	ARG
2	B	158	LEU
2	B	166	ILE
2	B	187	THR
2	B	189	ARG
2	B	190	GLU
2	B	194	LEU
2	B	200	GLU

Sometimes sidechains can be flipped to improve hydrogen bonding and reduce clashes. All (13) such sidechains are listed below:

Mol	Chain	Res	Type
1	A	17	ASN
1	A	34	ASN
1	A	35	GLN
1	A	85	GLN
1	A	196	ASN
2	B	17	ASN
2	B	34	ASN
2	B	85	GLN
2	B	130	GLN
2	B	136	GLN
2	B	142	ASN
2	B	177	HIS
2	B	185	ASN

5.3.3 RNA [i](#)

There are no RNA molecules in this entry.

5.4 Non-standard residues in protein, DNA, RNA chains [i](#)

2 non-standard protein/DNA/RNA residues are modelled in this entry.

In the following table, the Counts columns list the number of bonds (or angles) for which Mogul statistics could be retrieved, the number of bonds (or angles) that are observed in the model and the number of bonds (or angles) that are defined in the Chemical Component Dictionary. The Link column lists molecule types, if any, to which the group is linked. The Z score for a bond

length (or angle) is the number of standard deviations the observed value is removed from the expected value. A bond length (or angle) with $|Z| > 2$ is considered an outlier worth inspection. RMSZ is the root-mean-square of all Z scores of the bond lengths (or angles).

Mol	Type	Chain	Res	Link	Bond lengths			Bond angles		
					Counts	RMSZ	# Z > 2	Counts	RMSZ	# Z > 2
1	CME	A	48	1	8,9,10	0.78	0	6,9,11	1.38	1 (16%)
2	CME	B	48	2	8,9,10	0.79	0	6,9,11	2.08	3 (50%)

In the following table, the Chirals column lists the number of chiral outliers, the number of chiral centers analysed, the number of these observed in the model and the number defined in the Chemical Component Dictionary. Similar counts are reported in the Torsion and Rings columns. '-' means no outliers of that kind were identified.

Mol	Type	Chain	Res	Link	Chirals	Torsions	Rings
1	CME	A	48	1	-	2/5/8/10	-
2	CME	B	48	2	-	2/5/8/10	-

There are no bond length outliers.

All (4) bond angle outliers are listed below:

Mol	Chain	Res	Type	Atoms	Z	Observed(°)	Ideal(°)
2	B	48	CME	CB-SG-SD	3.35	112.52	103.86
2	B	48	CME	CE-SD-SG	3.06	116.88	103.46
1	A	48	CME	CE-SD-SG	3.00	116.65	103.46
2	B	48	CME	CZ-CE-SD	-2.11	106.33	113.39

There are no chirality outliers.

All (4) torsion outliers are listed below:

Mol	Chain	Res	Type	Atoms
1	A	48	CME	SD-CE-CZ-OH
2	B	48	CME	SD-CE-CZ-OH
1	A	48	CME	CZ-CE-SD-SG
2	B	48	CME	CZ-CE-SD-SG

There are no ring outliers.

No monomer is involved in short contacts.

5.5 Carbohydrates [i](#)

There are no oligosaccharides in this entry.

5.6 Ligand geometry [i](#)

2 ligands are modelled in this entry.

In the following table, the Counts columns list the number of bonds (or angles) for which Mogul statistics could be retrieved, the number of bonds (or angles) that are observed in the model and the number of bonds (or angles) that are defined in the Chemical Component Dictionary. The Link column lists molecule types, if any, to which the group is linked. The Z score for a bond length (or angle) is the number of standard deviations the observed value is removed from the expected value. A bond length (or angle) with $|Z| > 2$ is considered an outlier worth inspection. RMSZ is the root-mean-square of all Z scores of the bond lengths (or angles).

Mol	Type	Chain	Res	Link	Bond lengths			Bond angles		
					Counts	RMSZ	# Z > 2	Counts	RMSZ	# Z > 2
3	FAD	A	1219	-	58,58,58	1.08	5 (8%)	85,89,89	1.66	17 (20%)
3	FAD	B	1217	-	58,58,58	1.10	5 (8%)	85,89,89	1.81	19 (22%)

In the following table, the Chirals column lists the number of chiral outliers, the number of chiral centers analysed, the number of these observed in the model and the number defined in the Chemical Component Dictionary. Similar counts are reported in the Torsion and Rings columns. '-' means no outliers of that kind were identified.

Mol	Type	Chain	Res	Link	Chirals	Torsions	Rings
3	FAD	A	1219	-	-	3/34/50/50	0/6/6/6
3	FAD	B	1217	-	-	10/34/50/50	0/6/6/6

All (10) bond length outliers are listed below:

Mol	Chain	Res	Type	Atoms	Z	Observed(Å)	Ideal(Å)
3	A	1219	FAD	C4X-N5	3.87	1.39	1.30
3	B	1217	FAD	C4X-N5	3.65	1.38	1.30
3	B	1217	FAD	C10-N1	2.91	1.39	1.33
3	A	1219	FAD	C2A-N3A	2.82	1.38	1.33
3	A	1219	FAD	C2A-N1A	2.62	1.38	1.33
3	B	1217	FAD	C2A-N3A	2.53	1.38	1.33
3	B	1217	FAD	C2A-N1A	2.37	1.38	1.33
3	A	1219	FAD	C10-N1	2.18	1.37	1.33
3	A	1219	FAD	C8A-N7A	2.13	1.35	1.31
3	B	1217	FAD	C8A-N7A	2.04	1.35	1.31

All (36) bond angle outliers are listed below:

Mol	Chain	Res	Type	Atoms	Z	Observed(°)	Ideal(°)
3	B	1217	FAD	N3A-C2A-N1A	-6.20	119.19	128.58
3	A	1219	FAD	N3A-C2A-N1A	-6.04	119.44	128.58
3	B	1217	FAD	O4'-C4'-C5'	-5.00	98.95	109.99
3	B	1217	FAD	N9A-C8A-N7A	-4.74	107.22	113.94
3	A	1219	FAD	C5A-C4A-N3A	-4.65	120.31	126.72
3	B	1217	FAD	C5A-C4A-N3A	-4.17	120.97	126.72
3	A	1219	FAD	N9A-C8A-N7A	-4.13	108.08	113.94
3	B	1217	FAD	C5A-N7A-C8A	3.73	109.31	103.45
3	A	1219	FAD	C2A-N3A-C4A	3.64	120.72	111.83
3	A	1219	FAD	C4X-C10-N10	3.49	121.48	116.48
3	B	1217	FAD	O4B-C1B-N9A	3.44	114.69	108.09
3	B	1217	FAD	C2A-N3A-C4A	3.42	120.19	111.83
3	A	1219	FAD	C5A-N7A-C8A	3.30	108.63	103.45
3	B	1217	FAD	O2P-P-O3P	3.29	116.16	107.27
3	A	1219	FAD	N3A-C4A-N9A	3.28	132.75	127.17
3	B	1217	FAD	C4-N3-C2	-3.15	120.05	125.64
3	A	1219	FAD	C4-N3-C2	-3.04	120.24	125.64
3	B	1217	FAD	C4A-N9A-C8A	2.83	108.71	105.74
3	A	1219	FAD	O4B-C1B-N9A	2.82	113.51	108.09
3	B	1217	FAD	C4X-C10-N10	2.79	120.48	116.48
3	B	1217	FAD	C4A-C5A-N7A	-2.75	107.44	110.58
3	A	1219	FAD	C10-C4X-N5	-2.71	119.28	124.81
3	B	1217	FAD	C4X-C4-N3	2.67	120.05	113.25
3	B	1217	FAD	N3A-C4A-N9A	2.66	131.69	127.17
3	B	1217	FAD	O2A-PA-O3P	2.58	114.26	107.27
3	B	1217	FAD	O2P-P-O5'	2.56	119.17	107.57
3	A	1219	FAD	C4A-N9A-C8A	2.42	108.28	105.74
3	B	1217	FAD	C10-C4X-N5	-2.36	119.99	124.81
3	A	1219	FAD	C4X-C4-N3	2.35	119.24	113.25
3	A	1219	FAD	O2P-P-O3P	2.27	113.41	107.27
3	A	1219	FAD	C4-C4X-N5	2.25	121.32	118.21
3	A	1219	FAD	O3P-P-O1P	-2.24	103.97	110.70
3	A	1219	FAD	C4A-C5A-N7A	-2.19	108.08	110.58
3	B	1217	FAD	O4-C4-C4X	-2.17	120.81	126.53
3	A	1219	FAD	O3P-PA-O1A	-2.16	104.22	110.70
3	B	1217	FAD	C4X-C10-N1	-2.14	119.35	124.59

There are no chirality outliers.

All (13) torsion outliers are listed below:

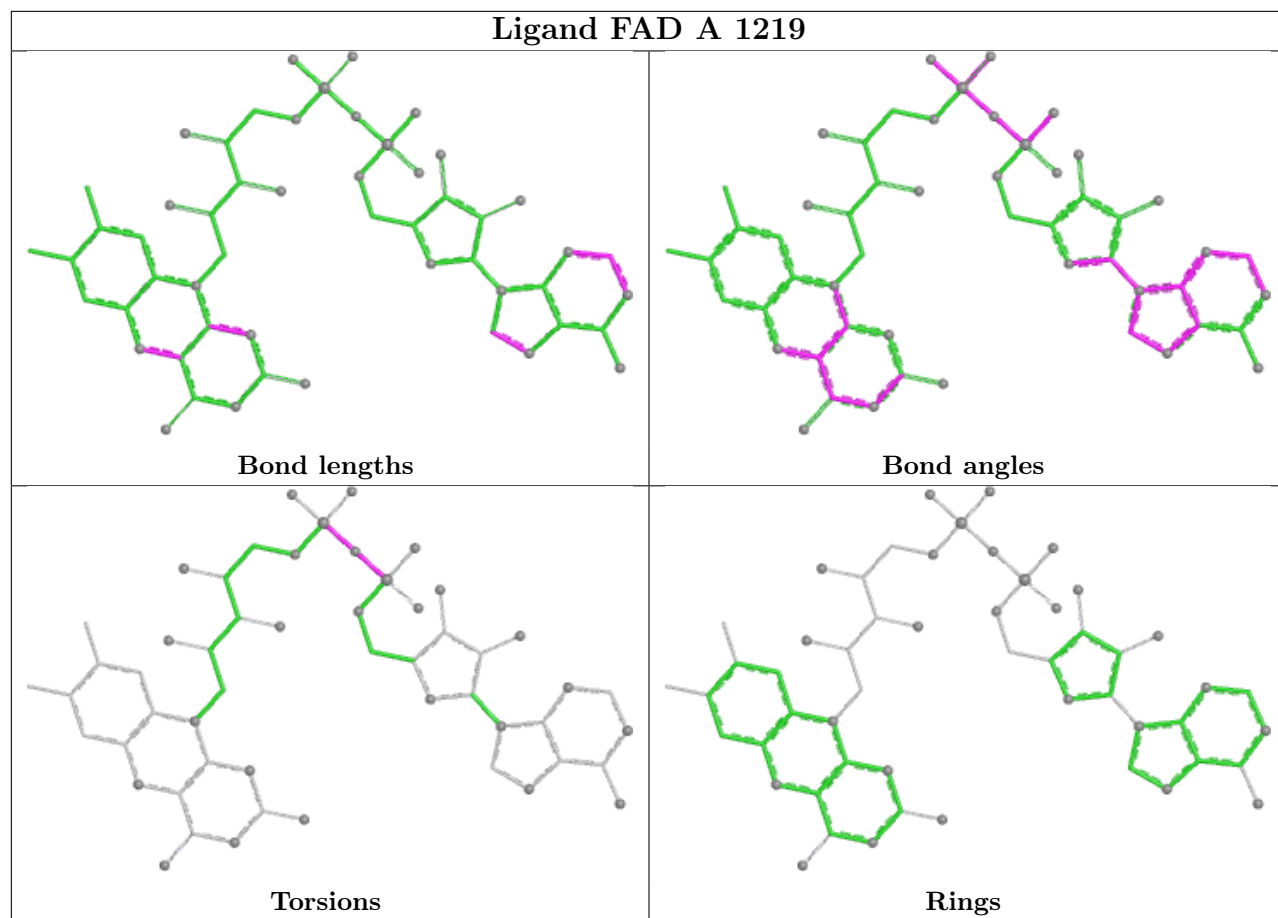
Mol	Chain	Res	Type	Atoms
3	B	1217	FAD	C2'-C3'-C4'-O4'
3	B	1217	FAD	O3'-C3'-C4'-O4'
3	B	1217	FAD	C5'-O5'-P-O1P
3	B	1217	FAD	C5'-O5'-P-O2P
3	B	1217	FAD	C5'-O5'-P-O3P
3	B	1217	FAD	O3'-C3'-C4'-C5'
3	B	1217	FAD	C2'-C3'-C4'-C5'
3	A	1219	FAD	P-O3P-PA-O5B
3	B	1217	FAD	P-O3P-PA-O5B
3	A	1219	FAD	PA-O3P-P-O2P
3	B	1217	FAD	PA-O3P-P-O1P
3	B	1217	FAD	PA-O3P-P-O2P
3	A	1219	FAD	PA-O3P-P-O1P

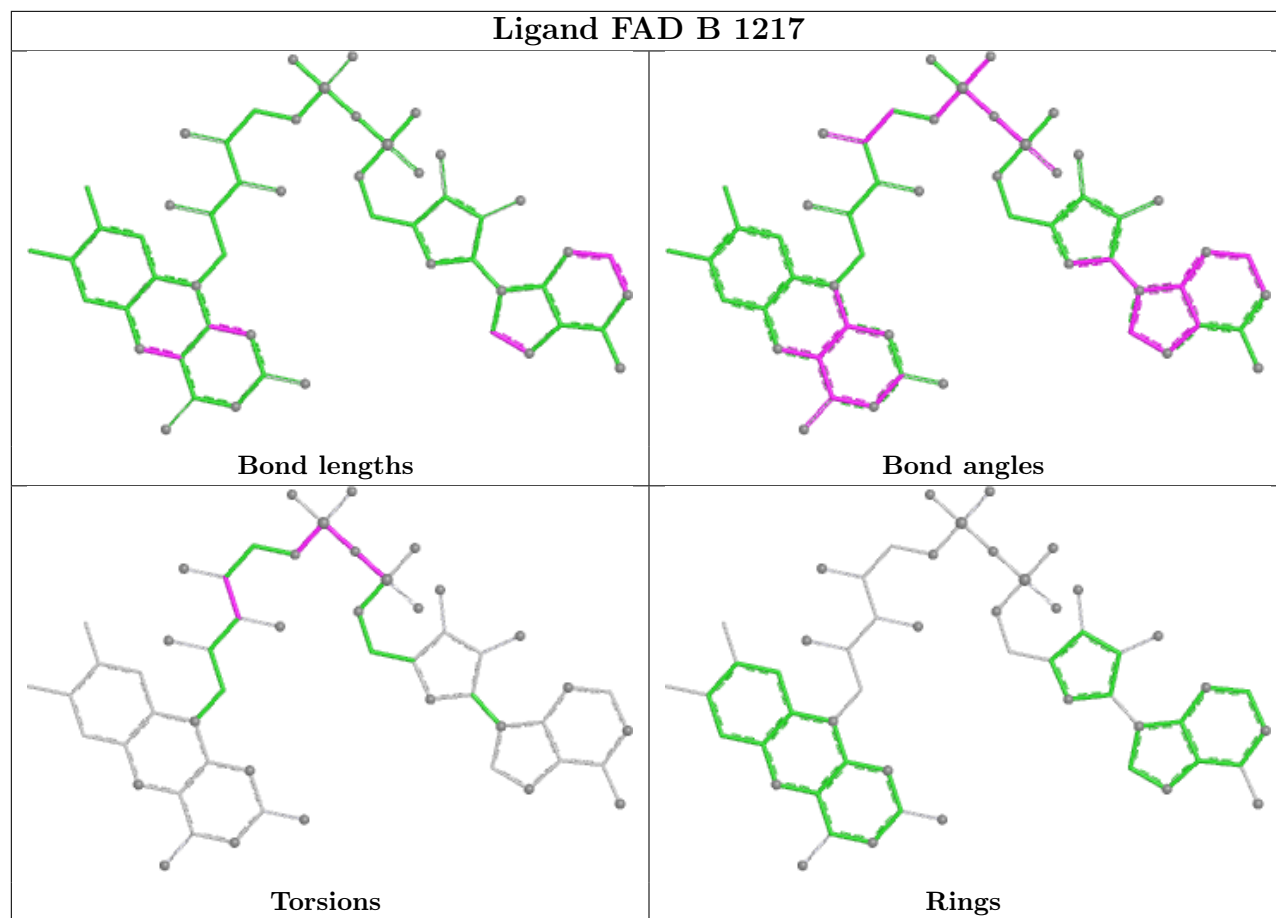
There are no ring outliers.

2 monomers are involved in 3 short contacts:

Mol	Chain	Res	Type	Clashes	Symm-Clashes
3	A	1219	FAD	1	0
3	B	1217	FAD	2	0

The following is a two-dimensional graphical depiction of Mogul quality analysis of bond lengths, bond angles, torsion angles, and ring geometry for all instances of the Ligand of Interest. In addition, ligands with molecular weight > 250 and outliers as shown on the validation Tables will also be included. For torsion angles, if less than 5% of the Mogul distribution of torsion angles is within 10 degrees of the torsion angle in question, then that torsion angle is considered an outlier. Any bond that is central to one or more torsion angles identified as an outlier by Mogul will be highlighted in the graph. For rings, the root-mean-square deviation (RMSD) between the ring in question and similar rings identified by Mogul is calculated over all ring torsion angles. If the average RMSD is greater than 60 degrees and the minimal RMSD between the ring in question and any Mogul-identified rings is also greater than 60 degrees, then that ring is considered an outlier. The outliers are highlighted in purple. The color gray indicates Mogul did not find sufficient equivalents in the CSD to analyse the geometry.





5.7 Other polymers [i](#)

There are no such residues in this entry.

5.8 Polymer linkage issues [i](#)

The following chains have linkage breaks:

Mol	Chain	Number of breaks
2	B	1

All chain breaks are listed below:

Model	Chain	Residue-1	Atom-1	Residue-2	Atom-2	Distance (Å)
1	B	150:ALA	C	151:LYS	N	2.54

6 Fit of model and data

6.1 Protein, DNA and RNA chains

In the following table, the column labelled ‘#RSRZ > 2’ contains the number (and percentage) of RSRZ outliers, followed by percent RSRZ outliers for the chain as percentile scores relative to all X-ray entries and entries of similar resolution. The OWAB column contains the minimum, median, 95th percentile and maximum values of the occupancy-weighted average B-factor per residue. The column labelled ‘Q < 0.9’ lists the number of (and percentage) of residues with an average occupancy less than 0.9.

Mol	Chain	Analysed	<RSRZ>	#RSRZ>2	OWAB(Å ²)	Q<0.9
1	A	179/217 (82%)	0.46	20 (11%) 10 11	18, 33, 84, 94	0
2	B	178/217 (82%)	0.42	8 (4%) 38 40	18, 34, 89, 92	1 (0%)
All	All	357/434 (82%)	0.44	28 (7%) 19 21	18, 33, 88, 94	1 (0%)

All (28) RSRZ outliers are listed below:

Mol	Chain	Res	Type	RSRZ
1	A	31	ASN	5.1
2	B	150	ALA	4.7
1	A	124	THR	4.3
1	A	32	PRO	4.0
1	A	133	LEU	4.0
2	B	133	LEU	3.8
1	A	126	TRP	3.6
1	A	140	LEU	3.4
2	B	140	LEU	2.9
1	A	125	TRP	2.9
1	A	217	HIS	2.7
2	B	1	MET	2.7
1	A	35	GLN	2.7
2	B	125	TRP	2.7
2	B	134	TYR	2.6
1	A	34	ASN	2.6
1	A	148	GLY	2.6
1	A	89	GLN	2.5
2	B	155	ARG	2.5
1	A	186	GLY	2.5
1	A	30	SER	2.5
1	A	185	ASN	2.4
2	B	126	TRP	2.4
1	A	149	ILE	2.4

Continued on next page...

Continued from previous page...

Mol	Chain	Res	Type	RSRZ
1	A	29	VAL	2.3
1	A	1	MET	2.2
1	A	138	MET	2.1
1	A	154	ALA	2.0

6.2 Non-standard residues in protein, DNA, RNA chains [i](#)

In the following table, the Atoms column lists the number of modelled atoms in the group and the number defined in the chemical component dictionary. The B-factors column lists the minimum, median, 95th percentile and maximum values of B factors of atoms in the group. The column labelled 'Q< 0.9' lists the number of atoms with occupancy less than 0.9.

Mol	Type	Chain	Res	Atoms	RSCC	RSR	B-factors(Å ²)	Q<0.9
2	CME	B	48	10/11	0.95	0.09	24,25,37,40	0
1	CME	A	48	10/11	0.96	0.09	32,33,44,47	0

6.3 Carbohydrates [i](#)

There are no oligosaccharides in this entry.

6.4 Ligands [i](#)

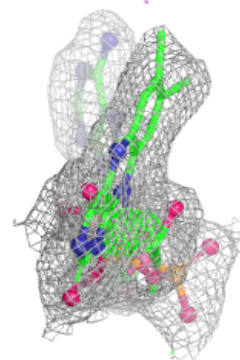
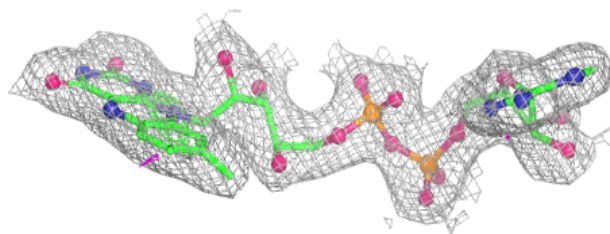
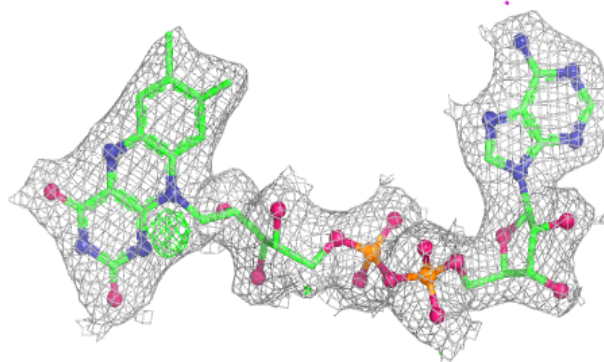
In the following table, the Atoms column lists the number of modelled atoms in the group and the number defined in the chemical component dictionary. The B-factors column lists the minimum, median, 95th percentile and maximum values of B factors of atoms in the group. The column labelled 'Q< 0.9' lists the number of atoms with occupancy less than 0.9.

Mol	Type	Chain	Res	Atoms	RSCC	RSR	B-factors(Å ²)	Q<0.9
3	FAD	A	1219	53/53	0.96	0.07	15,21,25,27	0
3	FAD	B	1217	53/53	0.96	0.07	16,25,32,32	0

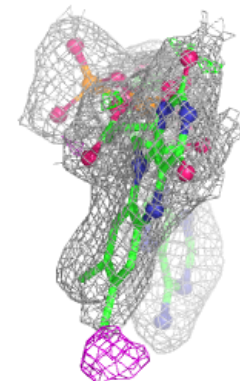
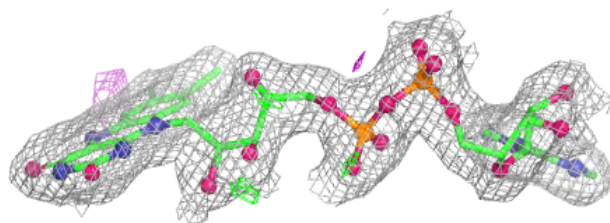
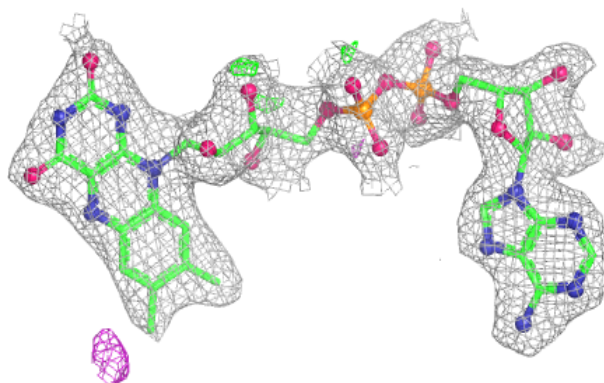
The following is a graphical depiction of the model fit to experimental electron density of all instances of the Ligand of Interest. In addition, ligands with molecular weight > 250 and outliers as shown on the geometry validation Tables will also be included. Each fit is shown from different orientation to approximate a three-dimensional view.

Electron density around FAD A 1219:

$2mF_o-DF_c$ (at 0.7 rmsd) in gray
 mF_o-DF_c (at 3 rmsd) in purple (negative)
and green (positive)

**Electron density around FAD B 1217:**

$2mF_o-DF_c$ (at 0.7 rmsd) in gray
 mF_o-DF_c (at 3 rmsd) in purple (negative)
and green (positive)



6.5 Other polymers [i](#)

There are no such residues in this entry.