



wwPDB X-ray Structure Validation Summary Report ⓘ

May 7, 2026 – 08:44 AM EDT

PDB ID : 4CFH / pdb_00004cfh
Title : Structure of an active form of mammalian AMPK
Authors : Xiao, B.; Sanders, M.J.; Underwood, E.; Heath, R.; Mayer, F.; Carmena, D.;
Jing, C.; Walker, P.A.; Eccleston, J.F.; Haire, L.F.; Saiu, P.; Howell, S.A.;
Aasland, R.; Martin, S.R.; Carling, D.; Gamblin, S.J.
Deposited on : 2013-11-18
Resolution : 3.24 Å(reported)

This is a wwPDB X-ray Structure Validation Summary Report for a publicly released PDB entry.

We welcome your comments at validation@mail.wwpdb.org

A user guide is available at

<https://www.wwpdb.org/validation/2017/XrayValidationReportHelp>

with specific help available everywhere you see the ⓘ symbol.

The types of validation reports are described at

<http://www.wwpdb.org/validation/2017/FAQs#types>.

The following versions of software and data (see [references ⓘ](#)) were used in the production of this report:

MolProbity : 4-5-2 with Phenix2.0
Mogul : 2022.3.0, CSD as543be (2022)
Xtrriage (Phenix) : 2.0
EDS : 3.0
Buster-report : wwPDB partial adaption of 1.1.7 (2018)
Percentile statistics : 20250101.v01 (using entries in the PDB archive January 1st 2025)
CCP4 : 9.0.010 (Gargrove)
Density-Fitness : 1.0.12
Ideal geometry (proteins) : Engh & Huber (2001)
Ideal geometry (DNA, RNA) : Parkinson et al. (1996)
Validation Pipeline (wwPDB-VP) : 2.49

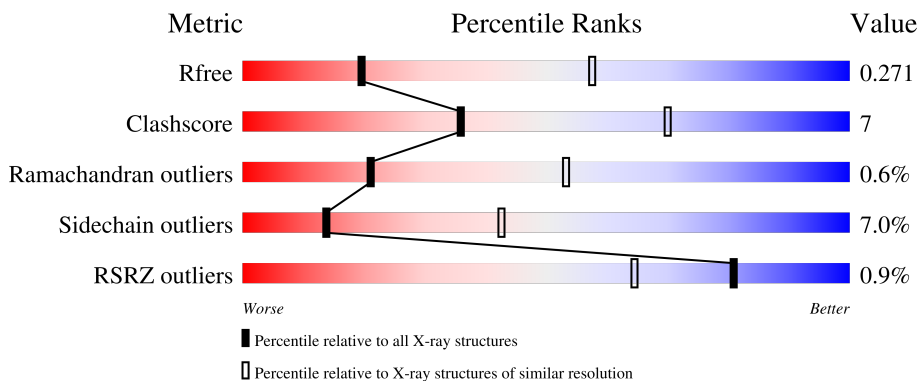
1 Overall quality at a glance i

The following experimental techniques were used to determine the structure:

X-RAY DIFFRACTION

The reported resolution of this entry is 3.24 Å.

Percentile scores (ranging between 0-100) for global validation metrics of the entry are shown in the following graphic. The table shows the number of entries on which the scores are based.



Metric	Whole archive (#Entries)	Similar resolution (#Entries, resolution range(Å))
R_{free}	180053	2153 (3.28-3.20)
Clashscore	190562	2275 (3.28-3.20)
Ramachandran outliers	187476	2233 (3.28-3.20)
Sidechain outliers	187428	2232 (3.28-3.20)
RSRZ outliers	180081	2153 (3.28-3.20)

The table below summarises the geometric issues observed across the polymeric chains and their fit to the electron density. The red, orange, yellow and green segments of the lower bar indicate the fraction of residues that contain outliers for ≥ 3 , 2, 1 and 0 types of geometric quality criteria respectively. A grey segment represents the fraction of residues that are not modelled. The numeric value for each fraction is indicated below the corresponding segment, with a dot representing fractions $\leq 5\%$. The upper red bar (where present) indicates the fraction of residues that have poor fit to the electron density. The numeric value is given above the bar.

Mol	Chain	Length	Quality of chain
1	A	493	 62% 18% 18%
2	B	87	 56% 22% 21%
3	C	27	 67% 11% 22%
4	E	330	 66% 23% 9%

2 Entry composition

There are 6 unique types of molecules in this entry. The entry contains 6429 atoms, of which 0 are hydrogens and 0 are deuteriums.

In the tables below, the ZeroOcc column contains the number of atoms modelled with zero occupancy, the AltConf column contains the number of residues with at least one atom in alternate conformation and the Trace column contains the number of residues modelled with at most 2 atoms.

- Molecule 1 is a protein called 5'-AMP-ACTIVATED PROTEIN KINASE CATALYTIC SUB-UNIT ALPHA-1.

Mol	Chain	Residues	Atoms					ZeroOcc	AltConf	Trace	
			Total	C	N	O	P				S
1	A	402	3217	2059	565	576	1	16	0	0	0

There are 24 discrepancies between the modelled and reference sequences:

Chain	Residue	Modelled	Actual	Comment	Reference
A	-18	MET	-	expression tag	UNP P54645
A	-17	SER	-	expression tag	UNP P54645
A	-16	HIS	-	expression tag	UNP P54645
A	-15	HIS	-	expression tag	UNP P54645
A	-14	HIS	-	expression tag	UNP P54645
A	-13	HIS	-	expression tag	UNP P54645
A	-12	HIS	-	expression tag	UNP P54645
A	-11	HIS	-	expression tag	UNP P54645
A	-10	SER	-	expression tag	UNP P54645
A	-9	SER	-	expression tag	UNP P54645
A	-8	GLY	-	expression tag	UNP P54645
A	-7	LEU	-	expression tag	UNP P54645
A	-6	GLU	-	expression tag	UNP P54645
A	-5	VAL	-	expression tag	UNP P54645
A	-4	LEU	-	expression tag	UNP P54645
A	-3	PHE	-	expression tag	UNP P54645
A	-2	GLN	-	expression tag	UNP P54645
A	-1	GLY	-	expression tag	UNP P54645
A	0	PRO	-	expression tag	UNP P54645
A	1	MET	-	expression tag	UNP P54645
A	471	LEU	-	SEE REMARK 999	UNP P54645
A	472	GLU	-	SEE REMARK 999	UNP P54645
A	473	VAL	-	SEE REMARK 999	UNP P54645
A	474	LEU	-	SEE REMARK 999	UNP P54645

- Molecule 2 is a protein called 5'-AMP-ACTIVATED PROTEIN KINASE SUBUNIT BETA-

2.

Mol	Chain	Residues	Atoms					ZeroOcc	AltConf	Trace
			Total	C	N	O	S			
2	B	69	550	360	92	95	3	0	0	0

There is a discrepancy between the modelled and reference sequences:

Chain	Residue	Modelled	Actual	Comment	Reference
B	186	MET	-	expression tag	UNP O43741

- Molecule 3 is a protein called 5'-AMP-ACTIVATED PROTEIN KINASE CATALYTIC SUBUNIT ALPHA-1.

Mol	Chain	Residues	Atoms					ZeroOcc	AltConf	Trace
			Total	C	N	O	S			
3	C	21	164	107	26	29	2	0	0	0

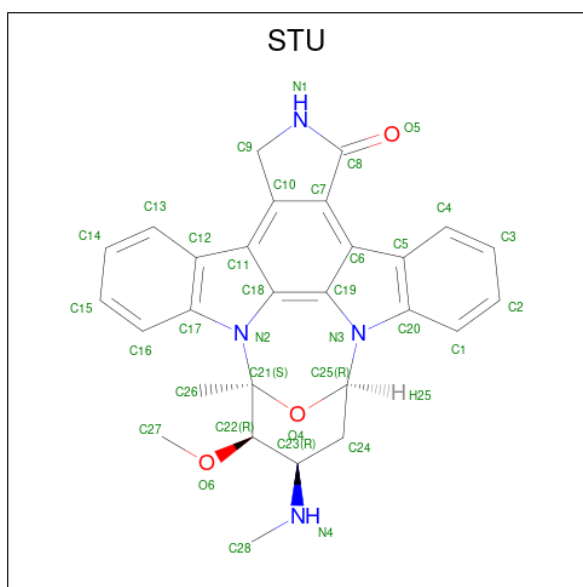
There are 2 discrepancies between the modelled and reference sequences:

Chain	Residue	Modelled	Actual	Comment	Reference
C	522	PHE	-	SEE REMARK 999	UNP P54645
C	523	GLN	-	SEE REMARK 999	UNP P54645

- Molecule 4 is a protein called 5'-AMP-ACTIVATED PROTEIN KINASE SUBUNIT GAMMA-1.

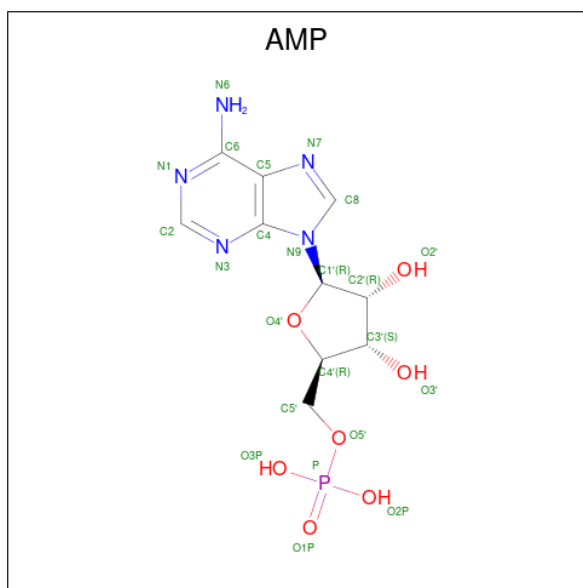
Mol	Chain	Residues	Atoms					ZeroOcc	AltConf	Trace
			Total	C	N	O	S			
4	E	301	2417	1568	403	439	7	0	0	0

- Molecule 5 is STAUROSPORINE (CCD ID: STU) (formula: C₂₈H₂₆N₄O₃).

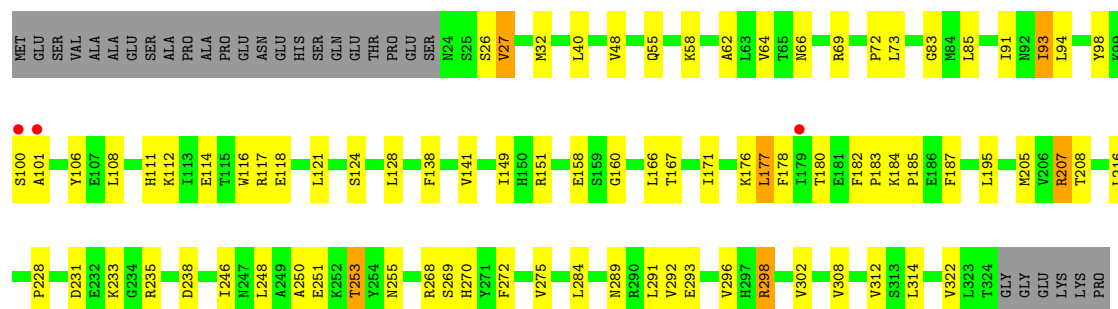


Mol	Chain	Residues	Atoms				ZeroOcc	AltConf
			Total	C	N	O		
5	A	1	35	28	4	3	0	0

- Molecule 6 is ADENOSINE MONOPHOSPHATE (CCD ID: AMP) (formula: $C_{10}H_{14}N_5O_7P$).



Mol	Chain	Residues	Atoms					ZeroOcc	AltConf
			Total	C	N	O	P		
6	E	1	23	10	5	7	1	0	0
6	E	1	23	10	5	7	1	0	0



4 Data and refinement statistics

Property	Value	Source
Space group	P 41 21 2	Depositor
Cell constants a, b, c, α , β , γ	133.92Å 133.92Å 141.90Å 90.00° 90.00° 90.00°	Depositor
Resolution (Å)	29.53 – 3.24 29.53 – 3.24	Depositor EDS
% Data completeness (in resolution range)	93.0 (29.53-3.24) 86.8 (29.53-3.24)	Depositor EDS
R_{merge}	0.07	Depositor
R_{sym}	(Not available)	Depositor
$\langle I/\sigma(I) \rangle$ ¹	1.46 (at 3.24Å)	Xtrriage
Refinement program	PHENIX	Depositor
R, R_{free}	0.233 , 0.268 0.237 , 0.271	Depositor DCC
R_{free} test set	989 reflections (5.04%)	wwPDB-VP
Wilson B-factor (Å ²)	108.5	Xtrriage
Anisotropy	0.239	Xtrriage
Bulk solvent k_{sol} (e/Å ³), B_{sol} (Å ²)	0.30 , 70.4	EDS
L-test for twinning ²	$\langle L \rangle = 0.49$, $\langle L^2 \rangle = 0.32$	Xtrriage
Estimated twinning fraction	No twinning to report.	Xtrriage
F_o, F_c correlation	0.93	EDS
Total number of atoms	6429	wwPDB-VP
Average B, all atoms (Å ²)	103.0	wwPDB-VP

Xtrriage's analysis on translational NCS is as follows: *The largest off-origin peak in the Patterson function is 2.38% of the height of the origin peak. No significant pseudotranslation is detected.*

¹Intensities estimated from amplitudes.

²Theoretical values of $\langle |L| \rangle$, $\langle L^2 \rangle$ for acentric reflections are 0.5, 0.333 respectively for untwinned datasets, and 0.375, 0.2 for perfectly twinned datasets.

5 Model quality [i](#)

5.1 Standard geometry [i](#)

Bond lengths and bond angles in the following residue types are not validated in this section: TPO, AMP, STU

The Z score for a bond length (or angle) is the number of standard deviations the observed value is removed from the expected value. A bond length (or angle) with $|Z| > 5$ is considered an outlier worth inspection. RMSZ is the root-mean-square of all Z scores of the bond lengths (or angles).

Mol	Chain	Bond lengths		Bond angles	
		RMSZ	# Z >5	RMSZ	# Z >5
1	A	0.29	0/3282	0.73	0/4440
2	B	0.29	0/565	0.73	2/772 (0.3%)
3	C	0.25	0/167	0.67	0/223
4	E	0.29	0/2468	0.73	0/3353
All	All	0.29	0/6482	0.73	2/8788 (0.0%)

There are no bond length outliers.

All (2) bond angle outliers are listed below:

Mol	Chain	Res	Type	Atoms	Z	Observed(°)	Ideal(°)
2	B	209	PRO	CA-C-N	5.36	125.02	119.56
2	B	209	PRO	C-N-CA	5.36	125.02	119.56

There are no chirality outliers.

There are no planarity outliers.

5.2 Too-close contacts [i](#)

In the following table, the Non-H and H(model) columns list the number of non-hydrogen atoms and hydrogen atoms in the chain respectively. The H(added) column lists the number of hydrogen atoms added and optimized by MolProbity. The Clashes column lists the number of clashes within the asymmetric unit, whereas Symm-Clashes lists symmetry-related clashes.

Mol	Chain	Non-H	H(model)	H(added)	Clashes	Symm-Clashes
1	A	3217	0	3182	52	0
2	B	550	0	585	11	0
3	C	164	0	165	1	0
4	E	2417	0	2477	37	0
5	A	35	0	26	4	0

Continued on next page...

Continued from previous page...

Mol	Chain	Non-H	H(model)	H(added)	Clashes	Symm-Clashes
6	E	46	0	24	2	0
All	All	6429	0	6459	94	0

The all-atom clashscore is defined as the number of clashes found per 1000 atoms (including hydrogen atoms). The all-atom clashscore for this structure is 7.

The worst 5 of 94 close contacts within the same asymmetric unit are listed below, sorted by their clash magnitude.

Atom-1	Atom-2	Interatomic distance (Å)	Clash overlap (Å)
1:A:23:GLY:HA3	1:A:30:VAL:HB	1.70	0.72
1:A:264:GLU:HA	1:A:269:LYS:HE3	1.75	0.68
1:A:363:ARG:HB3	2:B:227:PRO:HG3	1.76	0.67
1:A:142:PRO:HD3	1:A:203:ILE:HG12	1.76	0.66
1:A:417:ILE:HG23	1:A:422:TYR:HB2	1.77	0.65

There are no symmetry-related clashes.

5.3 Torsion angles [i](#)

5.3.1 Protein backbone [i](#)

In the following table, the Percentiles column shows the percent Ramachandran outliers of the chain as a percentile score with respect to all X-ray entries followed by that with respect to entries of similar resolution.

The Analysed column shows the number of residues for which the backbone conformation was analysed, and the total number of residues.

Mol	Chain	Analysed	Favoured	Allowed	Outliers	Percentiles	
1	A	395/493 (80%)	358 (91%)	35 (9%)	2 (0%)	24	56
2	B	67/87 (77%)	61 (91%)	6 (9%)	0	100	100
3	C	19/27 (70%)	19 (100%)	0	0	100	100
4	E	299/330 (91%)	280 (94%)	16 (5%)	3 (1%)	12	42
All	All	780/937 (83%)	718 (92%)	57 (7%)	5 (1%)	21	53

All (5) Ramachandran outliers are listed below:

Mol	Chain	Res	Type
4	E	26	SER

Continued on next page...

Continued from previous page...

Mol	Chain	Res	Type
1	A	27	PHE
1	A	106	CYS
4	E	27	VAL
4	E	124	SER

5.3.2 Protein sidechains [i](#)

In the following table, the Percentiles column shows the percent sidechain outliers of the chain as a percentile score with respect to all X-ray entries followed by that with respect to entries of similar resolution.

The Analysed column shows the number of residues for which the sidechain conformation was analysed, and the total number of residues.

Mol	Chain	Analysed	Rotameric	Outliers	Percentiles	
1	A	346/446 (78%)	325 (94%)	21 (6%)	17	47
2	B	66/81 (82%)	60 (91%)	6 (9%)	9	31
3	C	18/23 (78%)	16 (89%)	2 (11%)	6	24
4	E	274/299 (92%)	254 (93%)	20 (7%)	13	41
All	All	704/849 (83%)	655 (93%)	49 (7%)	14	42

5 of 49 residues with a non-rotameric sidechain are listed below:

Mol	Chain	Res	Type
3	C	542	LEU
4	E	207	ARG
4	E	93	ILE
4	E	167	THR
4	E	253	THR

Sometimes sidechains can be flipped to improve hydrogen bonding and reduce clashes. All (1) such sidechains are listed below:

Mol	Chain	Res	Type
3	C	531	HIS

5.3.3 RNA [i](#)

There are no RNA molecules in this entry.

5.4 Non-standard residues in protein, DNA, RNA chains [i](#)

1 non-standard protein/DNA/RNA residue is modelled in this entry.

In the following table, the Counts columns list the number of bonds (or angles) for which Mogul statistics could be retrieved, the number of bonds (or angles) that are observed in the model and the number of bonds (or angles) that are defined in the Chemical Component Dictionary. The Link column lists molecule types, if any, to which the group is linked. The Z score for a bond length (or angle) is the number of standard deviations the observed value is removed from the expected value. A bond length (or angle) with $|Z| > 2$ is considered an outlier worth inspection. RMSZ is the root-mean-square of all Z scores of the bond lengths (or angles).

Mol	Type	Chain	Res	Link	Bond lengths			Bond angles		
					Counts	RMSZ	# Z > 2	Counts	RMSZ	# Z > 2
1	TPO	A	172	1	8,10,11	0.93	0	10,14,16	1.09	1 (10%)

In the following table, the Chirals column lists the number of chiral outliers, the number of chiral centers analysed, the number of these observed in the model and the number defined in the Chemical Component Dictionary. Similar counts are reported in the Torsion and Rings columns. '-' means no outliers of that kind were identified.

Mol	Type	Chain	Res	Link	Chirals	Torsions	Rings
1	TPO	A	172	1	-	5/9/11/13	-

There are no bond length outliers.

All (1) bond angle outliers are listed below:

Mol	Chain	Res	Type	Atoms	Z	Observed(°)	Ideal(°)
1	A	172	TPO	O-C-CA	-2.20	119.12	124.77

There are no chirality outliers.

All (5) torsion outliers are listed below:

Mol	Chain	Res	Type	Atoms
1	A	172	TPO	C-CA-CB-CG2
1	A	172	TPO	CB-OG1-P-O1P
1	A	172	TPO	CB-OG1-P-O2P
1	A	172	TPO	CB-OG1-P-O3P
1	A	172	TPO	O-C-CA-CB

There are no ring outliers.

No monomer is involved in short contacts.

5.5 Carbohydrates [i](#)

There are no oligosaccharides in this entry.

5.6 Ligand geometry [i](#)

3 ligands are modelled in this entry.

In the following table, the Counts columns list the number of bonds (or angles) for which Mogul statistics could be retrieved, the number of bonds (or angles) that are observed in the model and the number of bonds (or angles) that are defined in the Chemical Component Dictionary. The Link column lists molecule types, if any, to which the group is linked. The Z score for a bond length (or angle) is the number of standard deviations the observed value is removed from the expected value. A bond length (or angle) with $|Z| > 2$ is considered an outlier worth inspection. RMSZ is the root-mean-square of all Z scores of the bond lengths (or angles).

Mol	Type	Chain	Res	Link	Bond lengths			Bond angles		
					Counts	RMSZ	# Z > 2	Counts	RMSZ	# Z > 2
5	STU	A	1550	-	39,42,42	0.71	2 (5%)	50,68,68	2.53	12 (24%)
6	AMP	E	1325	-	25,25,25	1.43	4 (16%)	37,38,38	1.86	8 (21%)
6	AMP	E	1326	-	25,25,25	1.41	4 (16%)	37,38,38	1.87	8 (21%)

In the following table, the Chirals column lists the number of chiral outliers, the number of chiral centers analysed, the number of these observed in the model and the number defined in the Chemical Component Dictionary. Similar counts are reported in the Torsion and Rings columns. '-' means no outliers of that kind were identified.

Mol	Type	Chain	Res	Link	Chirals	Torsions	Rings
5	STU	A	1550	-	-	1/4/42/42	-
6	AMP	E	1325	-	-	3/10/26/26	0/3/3/3
6	AMP	E	1326	-	-	0/10/26/26	0/3/3/3

The worst 5 of 10 bond length outliers are listed below:

Mol	Chain	Res	Type	Atoms	Z	Observed(Å)	Ideal(Å)
6	E	1325	AMP	C5-C4	4.80	1.47	1.39
6	E	1326	AMP	C5-C4	4.66	1.47	1.39
6	E	1325	AMP	C5-C6	2.76	1.48	1.41
6	E	1326	AMP	C5-C6	2.71	1.48	1.41
6	E	1325	AMP	C8-N7	2.36	1.36	1.31

The worst 5 of 28 bond angle outliers are listed below:

Mol	Chain	Res	Type	Atoms	Z	Observed(°)	Ideal(°)
5	A	1550	STU	C9-C10-C7	-9.74	106.31	109.88
5	A	1550	STU	C28-N4-C23	-6.62	106.48	114.39
5	A	1550	STU	C9-N1-C8	-5.88	108.50	113.86
6	E	1326	AMP	C5-C4-N3	-5.84	118.68	126.72
6	E	1325	AMP	C5-C4-N3	-5.82	118.70	126.72

There are no chirality outliers.

All (4) torsion outliers are listed below:

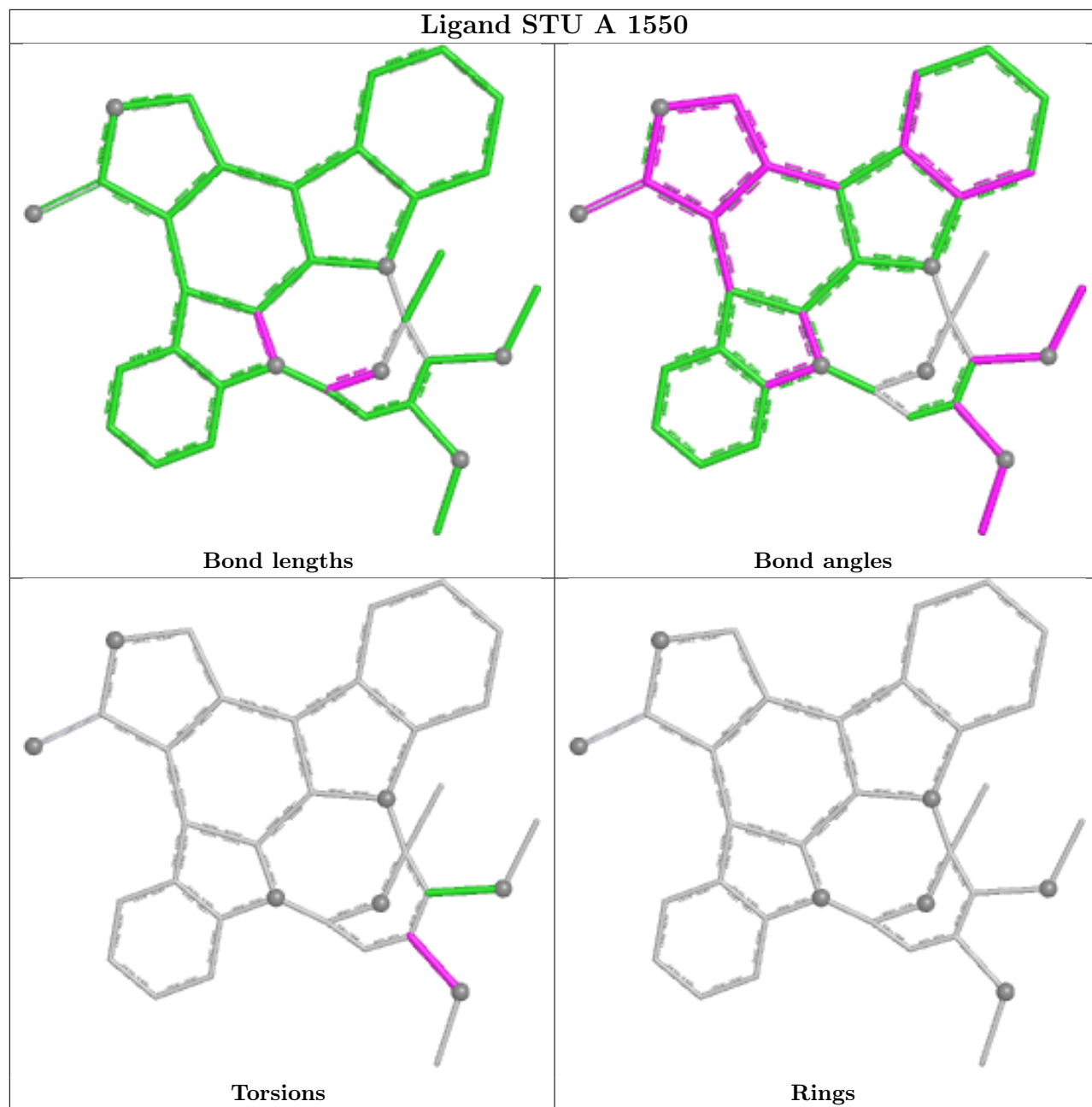
Mol	Chain	Res	Type	Atoms
6	E	1325	AMP	C5'-O5'-P-O2P
6	E	1325	AMP	C5'-O5'-P-O3P
6	E	1325	AMP	C5'-O5'-P-O1P
5	A	1550	STU	C24-C23-N4-C28

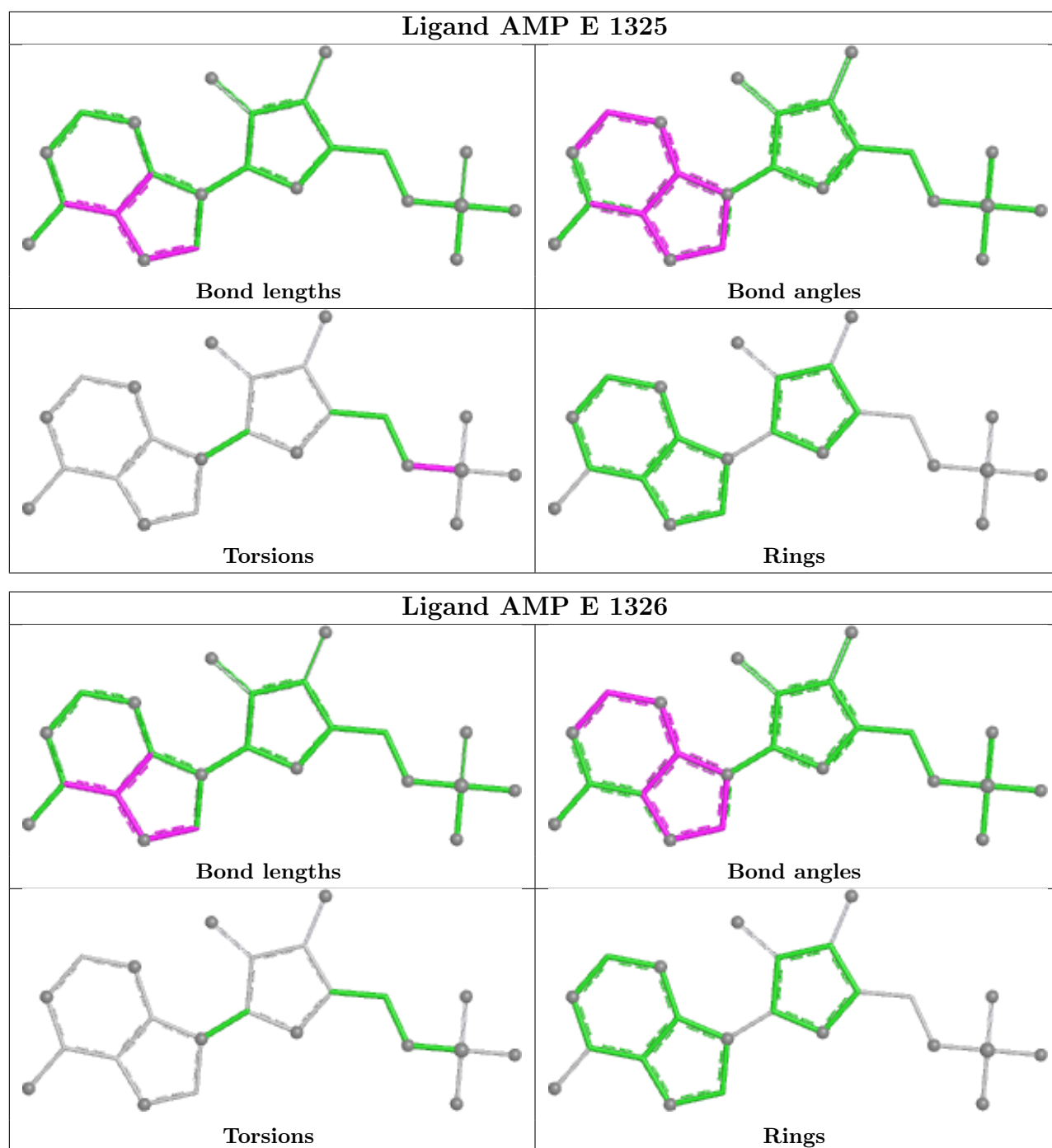
There are no ring outliers.

2 monomers are involved in 6 short contacts:

Mol	Chain	Res	Type	Clashes	Symm-Clashes
5	A	1550	STU	4	0
6	E	1325	AMP	2	0

The following is a two-dimensional graphical depiction of Mogul quality analysis of bond lengths, bond angles, torsion angles, and ring geometry for all instances of the Ligand of Interest. In addition, ligands with molecular weight > 250 and outliers as shown on the validation Tables will also be included. For torsion angles, if less than 5% of the Mogul distribution of torsion angles is within 10 degrees of the torsion angle in question, then that torsion angle is considered an outlier. Any bond that is central to one or more torsion angles identified as an outlier by Mogul will be highlighted in the graph. For rings, the root-mean-square deviation (RMSD) between the ring in question and similar rings identified by Mogul is calculated over all ring torsion angles. If the average RMSD is greater than 60 degrees and the minimal RMSD between the ring in question and any Mogul-identified rings is also greater than 60 degrees, then that ring is considered an outlier. The outliers are highlighted in purple. The color gray indicates Mogul did not find sufficient equivalents in the CSD to analyse the geometry.





5.7 Other polymers [i](#)

There are no such residues in this entry.

5.8 Polymer linkage issues [i](#)

There are no chain breaks in this entry.

6 Fit of model and data [i](#)

6.1 Protein, DNA and RNA chains [i](#)

In the following table, the column labelled ‘#RSRZ> 2’ contains the number (and percentage) of RSRZ outliers, followed by percent RSRZ outliers for the chain as percentile scores relative to all X-ray entries and entries of similar resolution. The OWAB column contains the minimum, median, 95th percentile and maximum values of the occupancy-weighted average B-factor per residue. The column labelled ‘Q< 0.9’ lists the number of (and percentage) of residues with an average occupancy less than 0.9.

Mol	Chain	Analysed	<RSRZ>	#RSRZ>2	OWAB(Å ²)	Q<0.9
1	A	401/493 (81%)	-0.21	4 (0%) 79 63	66, 108, 156, 196	0
2	B	69/87 (79%)	-0.39	0 100 100	62, 82, 134, 178	0
3	C	21/27 (77%)	-0.41	0 100 100	72, 96, 130, 166	0
4	E	301/330 (91%)	-0.33	3 (0%) 79 63	61, 89, 157, 199	0
All	All	792/937 (84%)	-0.27	7 (0%) 81 64	61, 97, 157, 199	0

The worst 5 of 7 RSRZ outliers are listed below:

Mol	Chain	Res	Type	RSRZ
4	E	101	ALA	2.9
1	A	174	CYS	2.6
4	E	100	SER	2.4
1	A	201	GLY	2.4
1	A	26	THR	2.3

6.2 Non-standard residues in protein, DNA, RNA chains [i](#)

In the following table, the Atoms column lists the number of modelled atoms in the group and the number defined in the chemical component dictionary. The B-factors column lists the minimum, median, 95th percentile and maximum values of B factors of atoms in the group. The column labelled ‘Q< 0.9’ lists the number of atoms with occupancy less than 0.9.

Mol	Type	Chain	Res	Atoms	RSCC	RSR	B-factors(Å ²)	Q<0.9
1	TPO	A	172	11/12	0.89	0.09	77,107,118,121	0

6.3 Carbohydrates [i](#)

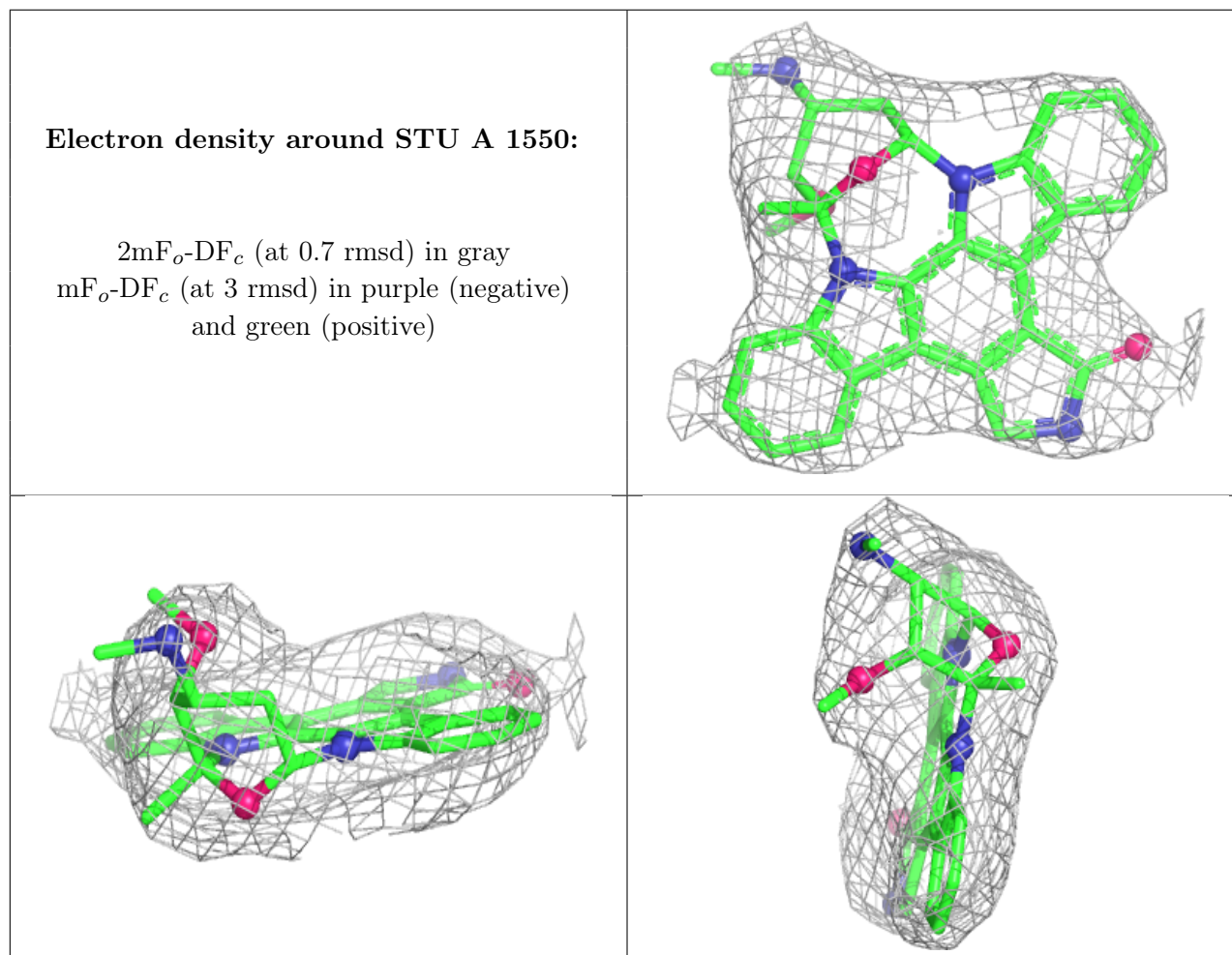
There are no oligosaccharides in this entry.

6.4 Ligands [i](#)

In the following table, the Atoms column lists the number of modelled atoms in the group and the number defined in the chemical component dictionary. The B-factors column lists the minimum, median, 95th percentile and maximum values of B factors of atoms in the group. The column labelled 'Q < 0.9' lists the number of atoms with occupancy less than 0.9.

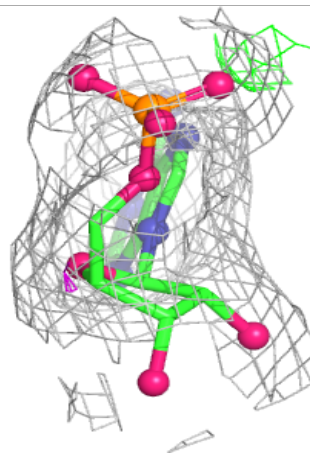
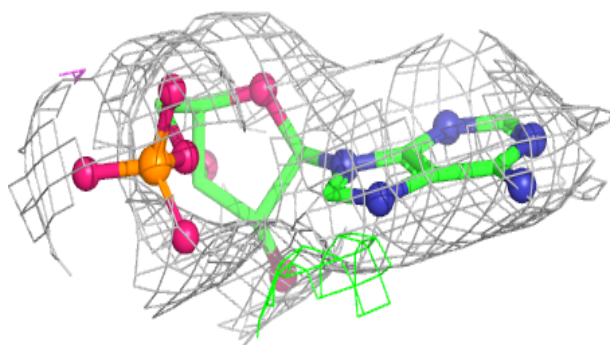
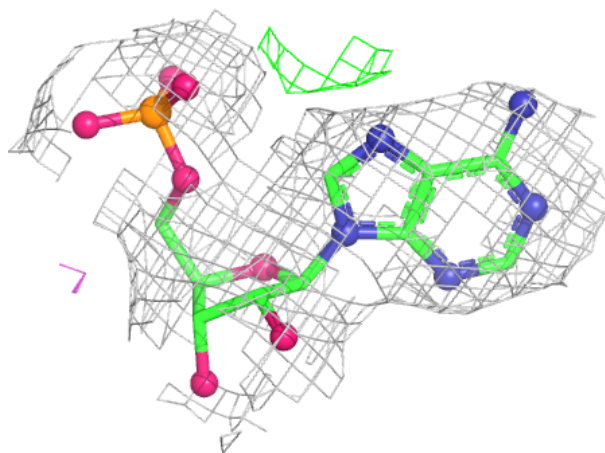
Mol	Type	Chain	Res	Atoms	RSCC	RSR	B-factors(Å ²)	Q<0.9
5	STU	A	1550	35/35	0.94	0.08	84,110,121,126	0
6	AMP	E	1326	23/23	0.95	0.05	75,80,84,84	0
6	AMP	E	1325	23/23	0.97	0.05	67,74,79,89	0

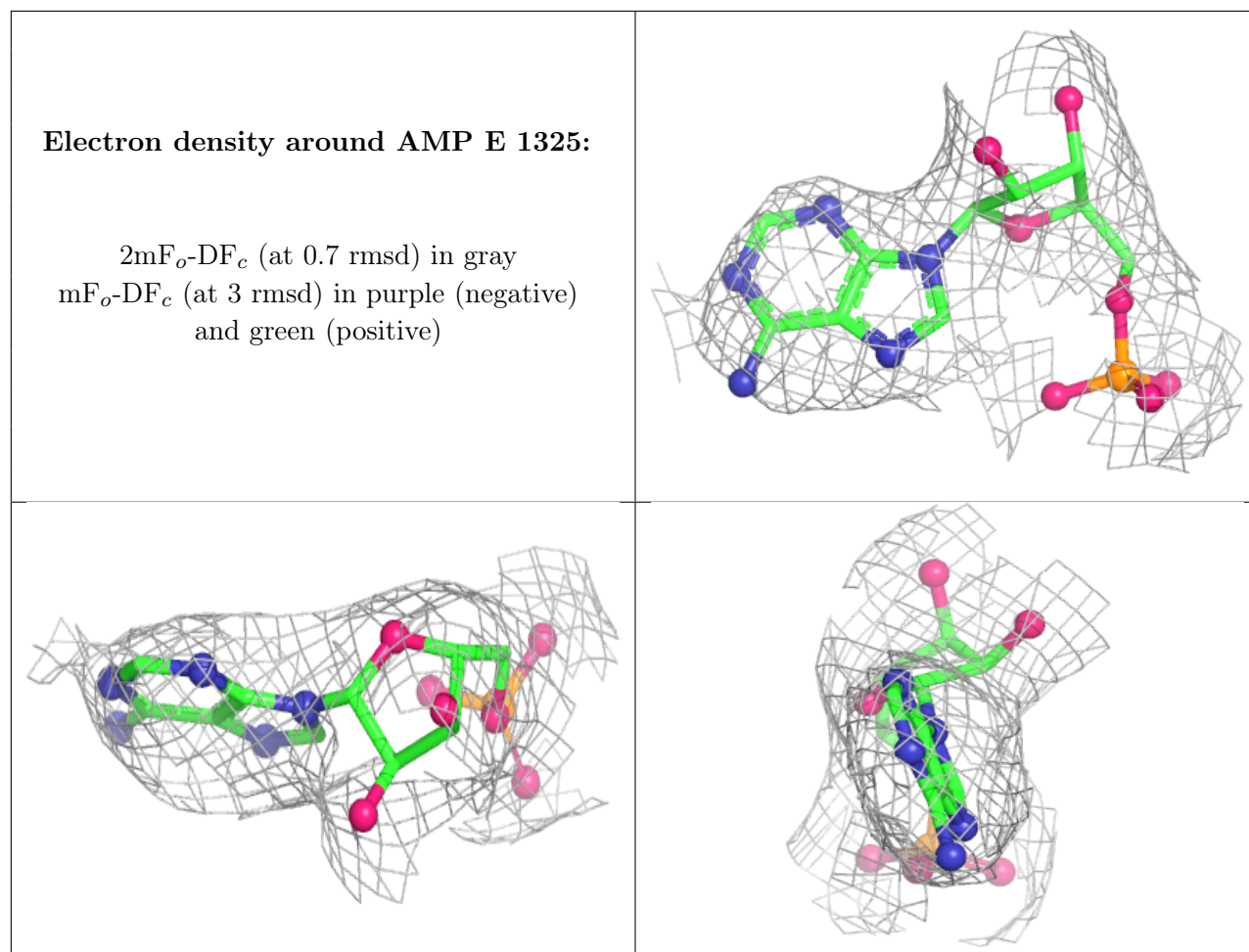
The following is a graphical depiction of the model fit to experimental electron density of all instances of the Ligand of Interest. In addition, ligands with molecular weight > 250 and outliers as shown on the geometry validation Tables will also be included. Each fit is shown from different orientation to approximate a three-dimensional view.



Electron density around AMP E 1326:

$2mF_o-DF_c$ (at 0.7 rmsd) in gray
 mF_o-DF_c (at 3 rmsd) in purple (negative)
and green (positive)





6.5 Other polymers [i](#)

There are no such residues in this entry.