



Full wwPDB X-ray Structure Validation Report ⓘ

Mar 5, 2026 – 03:46 PM UTC

PDB ID : 7CFE / pdb_00007cfe
Title : Crystal structure of RsmG methyltransferase of *M. tuberculosis*
Authors : Bijpuria, S.; Maurya, A.; Kumar, P.; Sharma, R.; Taneja, B.
Deposited on : 2020-06-25
Resolution : 2.02 Å(reported)

This is a Full wwPDB X-ray Structure Validation Report for a publicly released PDB entry.

We welcome your comments at validation@mail.wwpdb.org

A user guide is available at

<https://www.wwpdb.org/validation/2017/XrayValidationReportHelp>

with specific help available everywhere you see the ⓘ symbol.

The types of validation reports are described at

<http://www.wwpdb.org/validation/2017/FAQs#types>.

The following versions of software and data (see [references ⓘ](#)) were used in the production of this report:

MolProbity : 4-5-2 with Phenix2.0
Mogul : 2022.3.0, CSD as543be (2022)
Xtriage (Phenix) : 2.0
EDS : 3.0
Buster-report : wwPDB partial adaption of 1.1.7 (2018)
Percentile statistics : 20250101.v01 (using entries in the PDB archive January 1st 2025)
CCP4 : 9.0.010 (Gargrove)
Density-Fitness : 1.0.12
Ideal geometry (proteins) : Engh & Huber (2001)
Ideal geometry (DNA, RNA) : Parkinson et al. (1996)
Validation Pipeline (wwPDB-VP) : 2.49

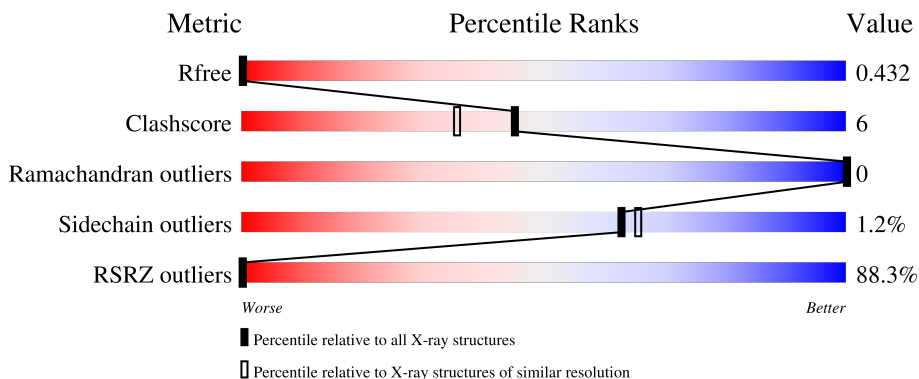
1 Overall quality at a glance

The following experimental techniques were used to determine the structure:

X-RAY DIFFRACTION

The reported resolution of this entry is 2.02 Å.

Percentile scores (ranging between 0-100) for global validation metrics of the entry are shown in the following graphic. The table shows the number of entries on which the scores are based.



Metric	Whole archive (#Entries)	Similar resolution (#Entries, resolution range(Å))
R_{free}	180053	13299 (2.04-2.00)
Clashscore	190562	1022 (2.02-2.02)
Ramachandran outliers	187476	1014 (2.02-2.02)
Sidechain outliers	187428	1014 (2.02-2.02)
RSRZ outliers	180081	13314 (2.04-2.00)

The table below summarises the geometric issues observed across the polymeric chains and their fit to the electron density. The red, orange, yellow and green segments of the lower bar indicate the fraction of residues that contain outliers for ≥ 3 , 2, 1 and 0 types of geometric quality criteria respectively. A grey segment represents the fraction of residues that are not modelled. The numeric value for each fraction is indicated below the corresponding segment, with a dot representing fractions $\leq 5\%$. The upper red bar (where present) indicates the fraction of residues that have poor fit to the electron density. The numeric value is given above the bar.

Mol	Chain	Length	Quality of chain
1	A	230	<p>82% 80% 13% 7%</p>

2 Entry composition [i](#)

There are 5 unique types of molecules in this entry. The entry contains 1819 atoms, of which 0 are hydrogens and 0 are deuteriums.

In the tables below, the ZeroOcc column contains the number of atoms modelled with zero occupancy, the AltConf column contains the number of residues with at least one atom in alternate conformation and the Trace column contains the number of residues modelled with at most 2 atoms.

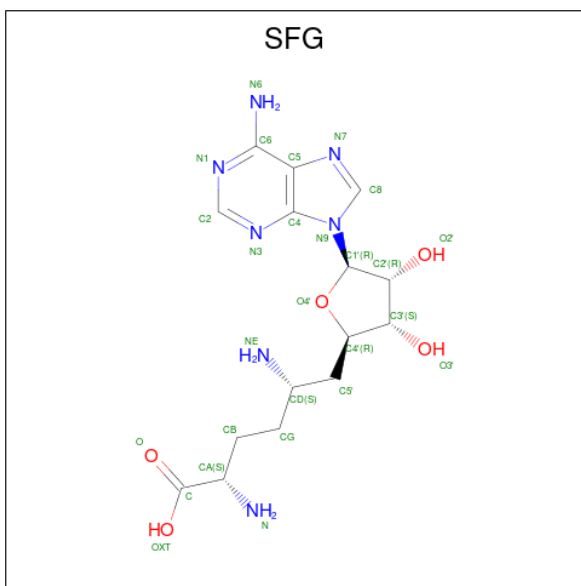
- Molecule 1 is a protein called Ribosomal RNA small subunit methyltransferase G.

Mol	Chain	Residues	Atoms					ZeroOcc	AltConf	Trace
			Total	C	N	O	S			
1	A	214	1629	1023	315	284	7	5	2	0

There are 6 discrepancies between the modelled and reference sequences:

Chain	Residue	Modelled	Actual	Comment	Reference
A	-5	HIS	-	expression tag	UNP P9WGW9
A	-4	HIS	-	expression tag	UNP P9WGW9
A	-3	HIS	-	expression tag	UNP P9WGW9
A	-2	HIS	-	expression tag	UNP P9WGW9
A	-1	HIS	-	expression tag	UNP P9WGW9
A	0	HIS	-	expression tag	UNP P9WGW9

- Molecule 2 is SINEFUNGIN (CCD ID: SFG) (formula: $C_{15}H_{23}N_7O_5$) (labeled as "Ligand of Interest" by depositor).



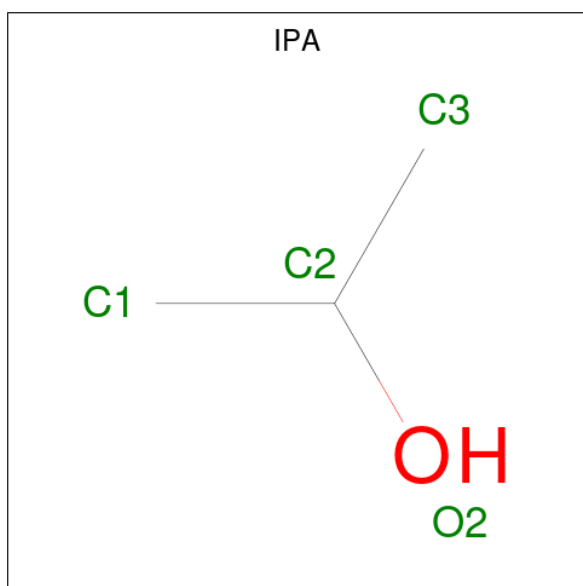
Mol	Chain	Residues	Atoms				ZeroOcc	AltConf
			Total	C	N	O		
2	A	1	27	15	7	5	0	0

- Molecule 3 is PHOSPHATE ION (CCD ID: PO4) (formula: O_4P).



Mol	Chain	Residues	Atoms			ZeroOcc	AltConf
			Total	O	P		
3	A	1	5	4	1	0	0

- Molecule 4 is ISOPROPYL ALCOHOL (CCD ID: IPA) (formula: C_3H_8O).



Mol	Chain	Residues	Atoms			ZeroOcc	AltConf
4	A	1	Total	C	O	0	0
			4	3	1		

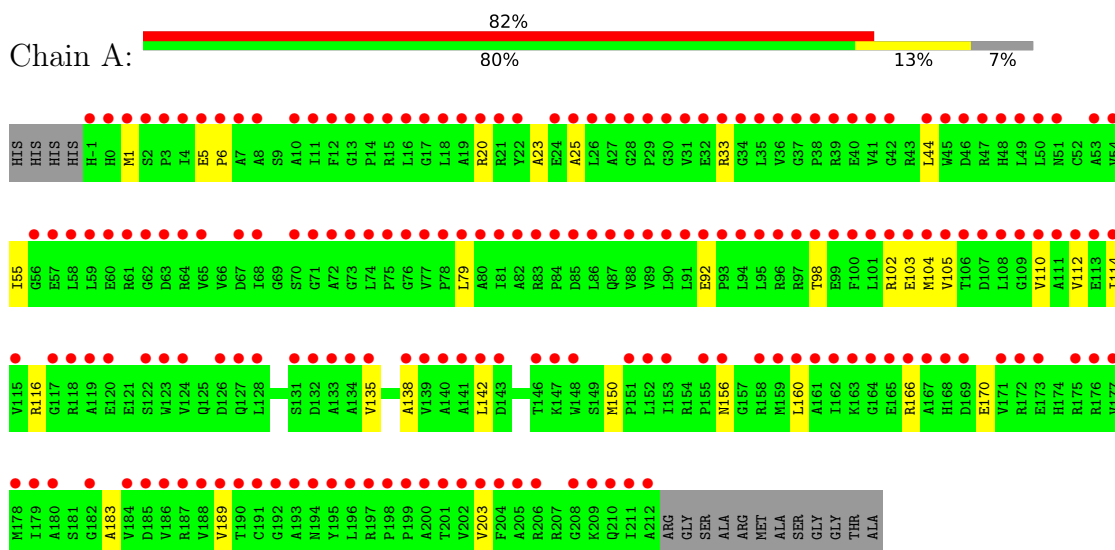
- Molecule 5 is water.

Mol	Chain	Residues	Atoms		ZeroOcc	AltConf
5	A	154	Total	O	0	0
			154	154		

3 Residue-property plots [i](#)

These plots are drawn for all protein, RNA, DNA and oligosaccharide chains in the entry. The first graphic for a chain summarises the proportions of the various outlier classes displayed in the second graphic. The second graphic shows the sequence view annotated by issues in geometry and electron density. Residues are color-coded according to the number of geometric quality criteria for which they contain at least one outlier: green = 0, yellow = 1, orange = 2 and red = 3 or more. A red dot above a residue indicates a poor fit to the electron density ($RSRZ > 2$). Stretches of 2 or more consecutive residues without any outlier are shown as a green connector. Residues present in the sample, but not in the model, are shown in grey.

- Molecule 1: Ribosomal RNA small subunit methyltransferase G



4 Data and refinement statistics

Property	Value	Source
Space group	P 21 21 21	Depositor
Cell constants a, b, c, α , β , γ	44.98Å 63.88Å 72.39Å 90.00° 90.00° 90.00°	Depositor
Resolution (Å)	27.26 – 2.02 27.26 – 2.02	Depositor EDS
% Data completeness (in resolution range)	98.8 (27.26-2.02) 92.3 (27.26-2.02)	Depositor EDS
R_{merge}	(Not available)	Depositor
R_{sym}	(Not available)	Depositor
$\langle I/\sigma(I) \rangle$ ¹	1.26 (at 2.03Å)	Xtrriage
Refinement program	PHENIX (1.18_3845: ???)	Depositor
R, R_{free}	0.188 , 0.226 0.442 , 0.432	Depositor DCC
R_{free} test set	609 reflections (4.61%)	wwPDB-VP
Wilson B-factor (Å ²)	22.2	Xtrriage
Anisotropy	0.422	Xtrriage
Bulk solvent k_{sol} (e/Å ³), B_{sol} (Å ²)	0.33 , 44.4	EDS
L-test for twinning ²	$\langle L \rangle = 0.48$, $\langle L^2 \rangle = 0.32$	Xtrriage
Estimated twinning fraction	No twinning to report.	Xtrriage
F_o, F_c correlation	0.67	EDS
Total number of atoms	1819	wwPDB-VP
Average B, all atoms (Å ²)	21.0	wwPDB-VP

Xtrriage's analysis on translational NCS is as follows: *The largest off-origin peak in the Patterson function is 9.03% of the height of the origin peak. No significant pseudotranslation is detected.*

¹Intensities estimated from amplitudes.

²Theoretical values of $\langle |L| \rangle$, $\langle L^2 \rangle$ for acentric reflections are 0.5, 0.333 respectively for untwinned datasets, and 0.375, 0.2 for perfectly twinned datasets.

5 Model quality [i](#)

5.1 Standard geometry [i](#)

Bond lengths and bond angles in the following residue types are not validated in this section: PO4, SFG, IPA

The Z score for a bond length (or angle) is the number of standard deviations the observed value is removed from the expected value. A bond length (or angle) with $|Z| > 5$ is considered an outlier worth inspection. RMSZ is the root-mean-square of all Z scores of the bond lengths (or angles).

Mol	Chain	Bond lengths		Bond angles	
		RMSZ	# Z >5	RMSZ	# Z >5
1	A	0.33	0/1661	0.56	0/2250

There are no bond length outliers.

There are no bond angle outliers.

There are no chirality outliers.

There are no planarity outliers.

5.2 Too-close contacts [i](#)

In the following table, the Non-H and H(model) columns list the number of non-hydrogen atoms and hydrogen atoms in the chain respectively. The H(added) column lists the number of hydrogen atoms added and optimized by MolProbity. The Clashes column lists the number of clashes within the asymmetric unit, whereas Symm-Clashes lists symmetry-related clashes.

Mol	Chain	Non-H	H(model)	H(added)	Clashes	Symm-Clashes
1	A	1629	0	1699	20	0
2	A	27	0	22	0	0
3	A	5	0	0	0	0
4	A	4	0	8	1	0
5	A	154	0	0	2	0
All	All	1819	0	1729	20	0

The all-atom clashscore is defined as the number of clashes found per 1000 atoms (including hydrogen atoms). The all-atom clashscore for this structure is 6.

All (20) close contacts within the same asymmetric unit are listed below, sorted by their clash magnitude.

Atom-1	Atom-2	Interatomic distance (Å)	Clash overlap (Å)
1:A:25:ALA:HB3	1:A:104:MET:HE3	1.82	0.61
1:A:98:THR:O	1:A:102:ARG:HG3	2.05	0.56
1:A:25:ALA:CB	1:A:104:MET:HE3	2.39	0.53
1:A:110:VAL:HG22	1:A:112:VAL:HG23	1.92	0.52
1:A:142:LEU:HD21	1:A:203:VAL:HG11	1.94	0.50
1:A:116:ARG:NH1	5:A:511:HOH:O	2.40	0.49
1:A:105:VAL:HG21	1:A:114:ILE:HD11	1.97	0.45
1:A:33:ARG:NH1	1:A:103:GLU:OE1	2.49	0.44
1:A:166:ARG:O	1:A:170:GLU:HG3	2.17	0.44
1:A:25:ALA:HB3	1:A:104:MET:CE	2.45	0.44
1:A:55:ILE:HD11	1:A:79[A]:LEU:HD11	1.99	0.44
1:A:92:GLU:O	1:A:116:ARG:HA	2.17	0.44
1:A:138:ALA:HA	4:A:403:IPA:H32	2.00	0.44
1:A:150:MET:HE3	1:A:183:ALA:HB2	2.01	0.42
1:A:135:VAL:HG12	1:A:160:LEU:HB2	2.02	0.42
1:A:1:MET:HE2	1:A:23:ALA:HB1	2.02	0.41
1:A:44:LEU:HD23	1:A:44:LEU:HA	1.89	0.41
1:A:1:MET:HA	1:A:1:MET:HE3	2.01	0.41
1:A:5:GLU:OE2	1:A:6:PRO:HA	2.21	0.41
1:A:189:VAL:HG23	5:A:623:HOH:O	2.20	0.41

There are no symmetry-related clashes.

5.3 Torsion angles [i](#)

5.3.1 Protein backbone [i](#)

In the following table, the Percentiles column shows the percent Ramachandran outliers of the chain as a percentile score with respect to all X-ray entries followed by that with respect to entries of similar resolution.

The Analysed column shows the number of residues for which the backbone conformation was analysed, and the total number of residues.

Mol	Chain	Analysed	Favoured	Allowed	Outliers	Percentiles
1	A	214/230 (93%)	210 (98%)	4 (2%)	0	100 100

There are no Ramachandran outliers to report.

5.3.2 Protein sidechains [i](#)

In the following table, the Percentiles column shows the percent sidechain outliers of the chain as a percentile score with respect to all X-ray entries followed by that with respect to entries of similar resolution.

The Analysed column shows the number of residues for which the sidechain conformation was analysed, and the total number of residues.

Mol	Chain	Analysed	Rotameric	Outliers	Percentiles
1	A	165/176 (94%)	162 (98%)	3 (2%)	51 52

All (3) residues with a non-rotameric sidechain are listed below:

Mol	Chain	Res	Type
1	A	20[A]	ARG
1	A	20[B]	ARG
1	A	156	ASN

Sometimes sidechains can be flipped to improve hydrogen bonding and reduce clashes. There are no such sidechains identified.

5.3.3 RNA [i](#)

There are no RNA molecules in this entry.

5.4 Non-standard residues in protein, DNA, RNA chains [i](#)

There are no non-standard protein/DNA/RNA residues in this entry.

5.5 Carbohydrates [i](#)

There are no oligosaccharides in this entry.

5.6 Ligand geometry [i](#)

3 ligands are modelled in this entry.

In the following table, the Counts columns list the number of bonds (or angles) for which Mogul statistics could be retrieved, the number of bonds (or angles) that are observed in the model and the number of bonds (or angles) that are defined in the Chemical Component Dictionary. The Link column lists molecule types, if any, to which the group is linked. The Z score for a bond

length (or angle) is the number of standard deviations the observed value is removed from the expected value. A bond length (or angle) with $|Z| > 2$ is considered an outlier worth inspection. RMSZ is the root-mean-square of all Z scores of the bond lengths (or angles).

Mol	Type	Chain	Res	Link	Bond lengths			Bond angles		
					Counts	RMSZ	# Z > 2	Counts	RMSZ	# Z > 2
4	IPA	A	403	-	3,3,3	0.48	0	3,3,3	0.43	0
3	PO4	A	402	-	4,4,4	0.84	0	6,6,6	0.38	0
2	SFG	A	401	-	28,29,29	2.64	12 (42%)	34,42,42	2.38	13 (38%)

In the following table, the Chirals column lists the number of chiral outliers, the number of chiral centers analysed, the number of these observed in the model and the number defined in the Chemical Component Dictionary. Similar counts are reported in the Torsion and Rings columns. '-' means no outliers of that kind were identified.

Mol	Type	Chain	Res	Link	Chirals	Torsions	Rings
2	SFG	A	401	-	-	3/17/33/33	0/3/3/3

All (12) bond length outliers are listed below:

Mol	Chain	Res	Type	Atoms	Z	Observed(Å)	Ideal(Å)
2	A	401	SFG	O4'-C4'	-6.59	1.30	1.45
2	A	401	SFG	C6-N6	5.34	1.47	1.34
2	A	401	SFG	C2'-C1'	-4.38	1.39	1.53
2	A	401	SFG	O4'-C1'	4.38	1.52	1.42
2	A	401	SFG	O2'-C2'	3.82	1.52	1.43
2	A	401	SFG	CG-CD	3.33	1.58	1.53
2	A	401	SFG	C2-N1	3.32	1.39	1.33
2	A	401	SFG	C5'-C4'	2.75	1.57	1.52
2	A	401	SFG	C1'-N9	-2.49	1.39	1.46
2	A	401	SFG	C5-N7	-2.37	1.34	1.39
2	A	401	SFG	C5'-CD	2.10	1.56	1.53
2	A	401	SFG	C8-N7	2.08	1.35	1.31

All (13) bond angle outliers are listed below:

Mol	Chain	Res	Type	Atoms	Z	Observed(°)	Ideal(°)
2	A	401	SFG	C5-C4-N3	-5.86	118.64	126.72
2	A	401	SFG	N3-C2-N1	-5.21	120.69	128.58
2	A	401	SFG	N6-C6-N1	-4.26	108.88	118.38
2	A	401	SFG	N9-C8-N7	-3.88	108.43	113.94
2	A	401	SFG	N3-C4-N9	3.76	133.56	127.17
2	A	401	SFG	C2-N3-C4	3.59	120.60	111.83
2	A	401	SFG	O4'-C1'-N9	3.56	114.92	108.09

Continued on next page...

Continued from previous page...

Mol	Chain	Res	Type	Atoms	Z	Observed(°)	Ideal(°)
2	A	401	SFG	C5-C6-N6	3.24	131.31	123.29
2	A	401	SFG	C5-N7-C8	3.17	108.44	103.45
2	A	401	SFG	C6-C5-C4	2.84	121.06	117.18
2	A	401	SFG	O2'-C2'-C1'	2.38	118.30	110.10
2	A	401	SFG	OXT-C-O	-2.35	118.75	124.08
2	A	401	SFG	C4-C5-N7	-2.31	107.94	110.58

There are no chirality outliers.

All (3) torsion outliers are listed below:

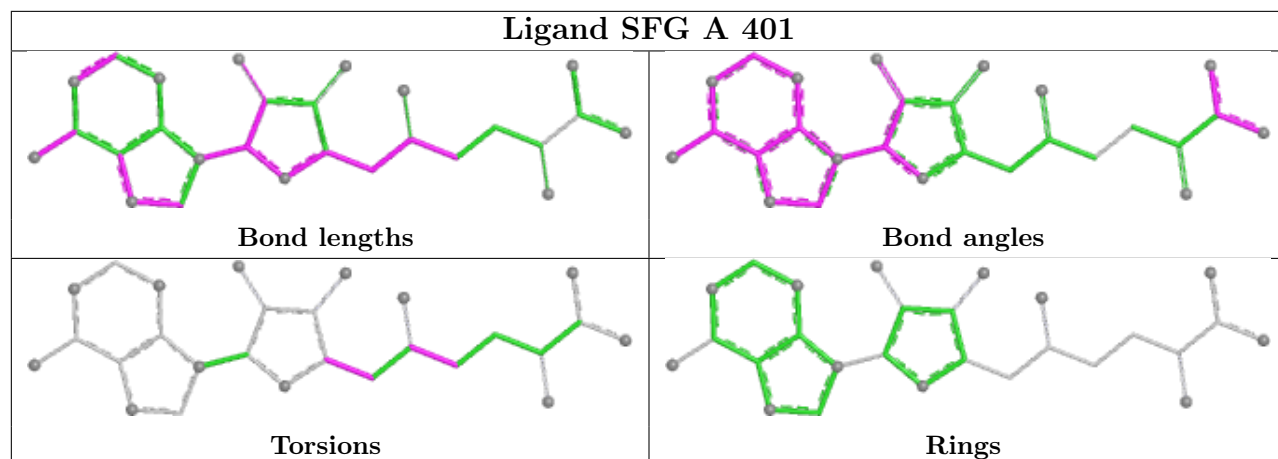
Mol	Chain	Res	Type	Atoms
2	A	401	SFG	NE-CD-CG-CB
2	A	401	SFG	C5'-CD-CG-CB
2	A	401	SFG	C3'-C4'-C5'-CD

There are no ring outliers.

1 monomer is involved in 1 short contact:

Mol	Chain	Res	Type	Clashes	Symm-Clashes
4	A	403	IPA	1	0

The following is a two-dimensional graphical depiction of Mogul quality analysis of bond lengths, bond angles, torsion angles, and ring geometry for all instances of the Ligand of Interest. In addition, ligands with molecular weight > 250 and outliers as shown on the validation Tables will also be included. For torsion angles, if less than 5% of the Mogul distribution of torsion angles is within 10 degrees of the torsion angle in question, then that torsion angle is considered an outlier. Any bond that is central to one or more torsion angles identified as an outlier by Mogul will be highlighted in the graph. For rings, the root-mean-square deviation (RMSD) between the ring in question and similar rings identified by Mogul is calculated over all ring torsion angles. If the average RMSD is greater than 60 degrees and the minimal RMSD between the ring in question and any Mogul-identified rings is also greater than 60 degrees, then that ring is considered an outlier. The outliers are highlighted in purple. The color gray indicates Mogul did not find sufficient equivalents in the CSD to analyse the geometry.



5.7 Other polymers [i](#)

There are no such residues in this entry.

5.8 Polymer linkage issues [i](#)

There are no chain breaks in this entry.

6 Fit of model and data

6.1 Protein, DNA and RNA chains

In the following table, the column labelled ‘#RSRZ> 2’ contains the number (and percentage) of RSRZ outliers, followed by percent RSRZ outliers for the chain as percentile scores relative to all X-ray entries and entries of similar resolution. The OWAB column contains the minimum, median, 95th percentile and maximum values of the occupancy-weighted average B-factor per residue. The column labelled ‘Q< 0.9’ lists the number of (and percentage) of residues with an average occupancy less than 0.9.

Mol	Chain	Analysed	<RSRZ>	#RSRZ>2	OWAB(Å ²)	Q<0.9
1	A	214/230 (93%)	3.58	189 (88%) 0 0	6, 18, 36, 53	3 (1%)

All (189) RSRZ outliers are listed below:

Mol	Chain	Res	Type	RSRZ
1	A	110	VAL	11.6
1	A	108	LEU	8.8
1	A	3	PRO	8.0
1	A	1	MET	7.7
1	A	0	HIS	7.6
1	A	105	VAL	7.1
1	A	11	ILE	7.0
1	A	19	ALA	6.9
1	A	111	ALA	6.6
1	A	107	ASP	6.1
1	A	18	LEU	6.1
1	A	164	GLY	6.0
1	A	34	GLY	5.8
1	A	12	PHE	5.7
1	A	104	MET	5.7
1	A	2	SER	5.6
1	A	96	ARG	5.6
1	A	128	LEU	5.6
1	A	72	ALA	5.5
1	A	5	GLU	5.5
1	A	68	ILE	5.2
1	A	14	PRO	5.1
1	A	118	ARG	5.1
1	A	106	THR	5.1
1	A	31	VAL	5.1
1	A	22	TYR	5.1
1	A	16	LEU	5.1

Continued on next page...

Continued from previous page...

Mol	Chain	Res	Type	RSRZ
1	A	161	ALA	5.0
1	A	85	ASP	5.0
1	A	30	GLY	5.0
1	A	59	LEU	5.0
1	A	33	ARG	5.0
1	A	113	GLU	4.9
1	A	84	PRO	4.9
1	A	173	GLU	4.9
1	A	114	ILE	4.9
1	A	89	VAL	4.9
1	A	109	GLY	4.8
1	A	45	TRP	4.7
1	A	188	VAL	4.7
1	A	179	ILE	4.7
1	A	21	ARG	4.7
1	A	115	VAL	4.6
1	A	39	ARG	4.6
1	A	26	LEU	4.6
1	A	208	GLY	4.6
1	A	8	ALA	4.5
1	A	-1	HIS	4.4
1	A	35	LEU	4.4
1	A	152	LEU	4.4
1	A	86	LEU	4.4
1	A	95	LEU	4.4
1	A	191	CYS	4.4
1	A	195	TYR	4.3
1	A	102	ARG	4.3
1	A	142	LEU	4.3
1	A	64	ARG	4.3
1	A	58	LEU	4.3
1	A	131	SER	4.3
1	A	140	ALA	4.3
1	A	25	ALA	4.2
1	A	166	ARG	4.2
1	A	172	ARG	4.2
1	A	28	GLY	4.2
1	A	176	ARG	4.2
1	A	187	ARG	4.2
1	A	90	LEU	4.1
1	A	71	GLY	4.1
1	A	211	ILE	4.1

Continued on next page...

Continued from previous page...

Mol	Chain	Res	Type	RSRZ
1	A	4	ILE	4.0
1	A	53	ALA	4.0
1	A	56	GLY	4.0
1	A	94	LEU	4.0
1	A	38	PRO	4.0
1	A	81	ILE	3.8
1	A	7	ALA	3.8
1	A	138	ALA	3.8
1	A	167	ALA	3.8
1	A	135	VAL	3.8
1	A	17	GLY	3.8
1	A	103	GLU	3.8
1	A	73	GLY	3.8
1	A	139	VAL	3.7
1	A	122	SER	3.7
1	A	155	PRO	3.7
1	A	165	GLU	3.7
1	A	20[A]	ARG	3.7
1	A	50	LEU	3.6
1	A	6	PRO	3.6
1	A	123	TRP	3.6
1	A	159	MET	3.6
1	A	185	ASP	3.6
1	A	29	PRO	3.6
1	A	197	ARG	3.6
1	A	63	ASP	3.6
1	A	91	LEU	3.6
1	A	93	PRO	3.6
1	A	133	ALA	3.6
1	A	189	VAL	3.5
1	A	62	GLY	3.5
1	A	41	VAL	3.5
1	A	201	THR	3.5
1	A	194	ASN	3.5
1	A	171	VAL	3.5
1	A	146	THR	3.5
1	A	117	GLY	3.4
1	A	199	PRO	3.4
1	A	148	TRP	3.4
1	A	200	ALA	3.4
1	A	88	VAL	3.4
1	A	120	GLU	3.4

Continued on next page...

Continued from previous page...

Mol	Chain	Res	Type	RSRZ
1	A	206	ARG	3.4
1	A	54	VAL	3.4
1	A	112	VAL	3.4
1	A	100	PHE	3.4
1	A	99	GLU	3.3
1	A	82	ALA	3.3
1	A	162	ILE	3.3
1	A	101	LEU	3.3
1	A	126	ASP	3.3
1	A	134	ALA	3.3
1	A	74	LEU	3.3
1	A	87	GLN	3.3
1	A	127	GLN	3.3
1	A	168	HIS	3.3
1	A	186	VAL	3.3
1	A	147	LYS	3.3
1	A	76	GLY	3.2
1	A	44	LEU	3.1
1	A	153	ILE	3.1
1	A	124	VAL	3.1
1	A	196	LEU	3.1
1	A	77	VAL	3.0
1	A	190	THR	3.0
1	A	47	ARG	3.0
1	A	80	ALA	3.0
1	A	180	ALA	3.0
1	A	36	VAL	3.0
1	A	160	LEU	3.0
1	A	24	GLU	3.0
1	A	193	ALA	2.9
1	A	60	GLU	2.9
1	A	209	LYS	2.9
1	A	132	ASP	2.8
1	A	13	GLY	2.8
1	A	177	VAL	2.8
1	A	184	VAL	2.8
1	A	37	GLY	2.7
1	A	98	THR	2.7
1	A	61	ARG	2.7
1	A	51	ASN	2.7
1	A	10	ALA	2.7
1	A	78	PRO	2.7

Continued on next page...

Continued from previous page...

Mol	Chain	Res	Type	RSRZ
1	A	27	ALA	2.7
1	A	204	PHE	2.6
1	A	192	GLY	2.6
1	A	182	GLY	2.6
1	A	92	GLU	2.6
1	A	67	ASP	2.6
1	A	202	VAL	2.6
1	A	158	ARG	2.6
1	A	143	ASP	2.5
1	A	119	ALA	2.5
1	A	169	ASP	2.5
1	A	151	PRO	2.5
1	A	79[A]	LEU	2.5
1	A	156	ASN	2.5
1	A	42	GLY	2.5
1	A	83	ARG	2.4
1	A	178	MET	2.4
1	A	75	PRO	2.4
1	A	15	ARG	2.3
1	A	46	ASP	2.3
1	A	70	SER	2.3
1	A	65	VAL	2.3
1	A	175	ARG	2.3
1	A	163	LYS	2.2
1	A	32	GLU	2.2
1	A	40	GLU	2.2
1	A	49	LEU	2.2
1	A	212	ALA	2.2
1	A	57	GLU	2.1
1	A	48	HIS	2.1
1	A	198	PRO	2.1
1	A	205	ALA	2.1
1	A	203	VAL	2.0
1	A	141	ALA	2.0
1	A	210	GLN	2.0
1	A	97	ARG	2.0

6.2 Non-standard residues in protein, DNA, RNA chains

There are no non-standard protein/DNA/RNA residues in this entry.

6.3 Carbohydrates [i](#)

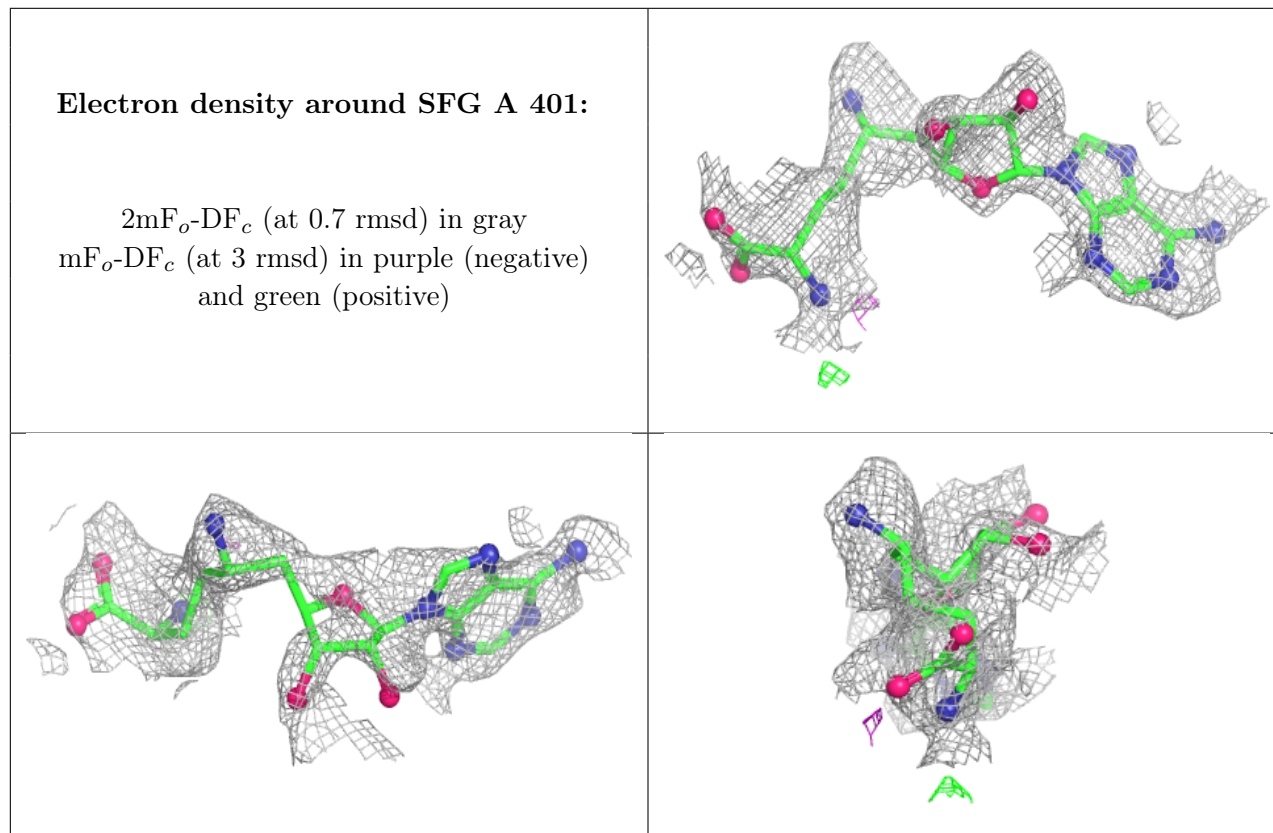
There are no oligosaccharides in this entry.

6.4 Ligands [i](#)

In the following table, the Atoms column lists the number of modelled atoms in the group and the number defined in the chemical component dictionary. The B-factors column lists the minimum, median, 95th percentile and maximum values of B factors of atoms in the group. The column labelled 'Q< 0.9' lists the number of atoms with occupancy less than 0.9.

Mol	Type	Chain	Res	Atoms	RSCC	RSR	B-factors(Å ²)	Q<0.9
3	PO4	A	402	5/5	0.35	0.27	31,43,55,74	0
2	SFG	A	401	27/27	0.66	0.17	10,17,23,25	0
4	IPA	A	403	4/4	0.73	0.20	22,22,23,24	0

The following is a graphical depiction of the model fit to experimental electron density of all instances of the Ligand of Interest. In addition, ligands with molecular weight > 250 and outliers as shown on the geometry validation Tables will also be included. Each fit is shown from different orientation to approximate a three-dimensional view.



6.5 Other polymers [i](#)

There are no such residues in this entry.