



# wwPDB X-ray Structure Validation Summary Report ⓘ

Mar 5, 2026 – 08:14 PM UTC

PDB ID : 2CI5 / pdb\_00002ci5  
Title : Crystal structure of Dimethylarginine Dimethylaminohydrolase I in complex with L-homocysteine  
Authors : Frey, D.; Braun, O.; Briand, C.; Vasak, M.; Grutter, M.G.  
Deposited on : 2006-03-17  
Resolution : 1.79 Å(reported)

This is a wwPDB X-ray Structure Validation Summary Report for a publicly released PDB entry.

We welcome your comments at [validation@mail.wwpdb.org](mailto:validation@mail.wwpdb.org)

A user guide is available at

<https://www.wwpdb.org/validation/2017/XrayValidationReportHelp>

with specific help available everywhere you see the ⓘ symbol.

The types of validation reports are described at

<http://www.wwpdb.org/validation/2017/FAQs#types>.

---

The following versions of software and data (see [references ⓘ](#)) were used in the production of this report:

MolProbity : 4-5-2 with Phenix2.0  
Mogul : 2022.3.0, CSD as543be (2022)  
Xtriage (Phenix) : 2.0  
EDS : 3.0  
Percentile statistics : 20250101.v01 (using entries in the PDB archive January 1st 2025)  
CCP4 : 9.0.010 (Gargrove)  
Density-Fitness : 1.0.12  
Ideal geometry (proteins) : Engh & Huber (2001)  
Ideal geometry (DNA, RNA) : Parkinson et al. (1996)  
Validation Pipeline (wwPDB-VP) : 2.49

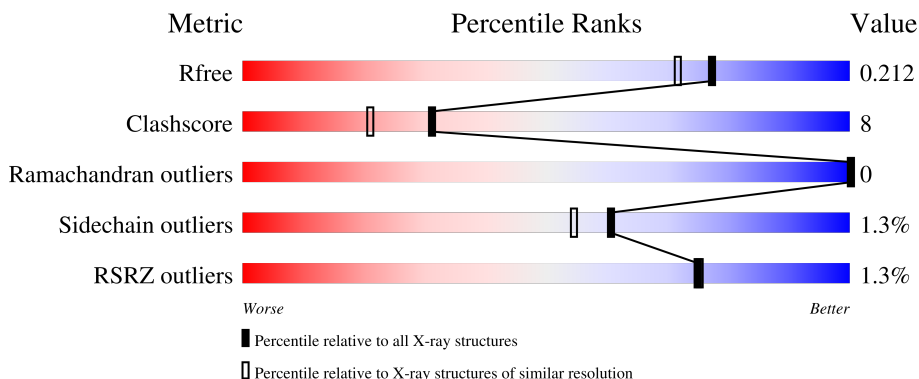
# 1 Overall quality at a glance

The following experimental techniques were used to determine the structure:

*X-RAY DIFFRACTION*

The reported resolution of this entry is 1.79 Å.

Percentile scores (ranging between 0-100) for global validation metrics of the entry are shown in the following graphic. The table shows the number of entries on which the scores are based.



Metric	Whole archive (#Entries)	Similar resolution (#Entries, resolution range(Å))
$R_{free}$	180053	7662 (1.80-1.80)
Clashscore	190562	8479 (1.80-1.80)
Ramachandran outliers	187476	8391 (1.80-1.80)
Sidechain outliers	187428	8390 (1.80-1.80)
RSRZ outliers	180081	7663 (1.80-1.80)

The table below summarises the geometric issues observed across the polymeric chains and their fit to the electron density. The red, orange, yellow and green segments of the lower bar indicate the fraction of residues that contain outliers for  $\geq 3$ , 2, 1 and 0 types of geometric quality criteria respectively. A grey segment represents the fraction of residues that are not modelled. The numeric value for each fraction is indicated below the corresponding segment, with a dot representing fractions  $\leq 5\%$ . The upper red bar (where present) indicates the fraction of residues that have poor fit to the electron density. The numeric value is given above the bar.

Mol	Chain	Length	Quality of chain
1	A	284	 76% 18%
1	B	284	 82% 14%

## 2 Entry composition [i](#)

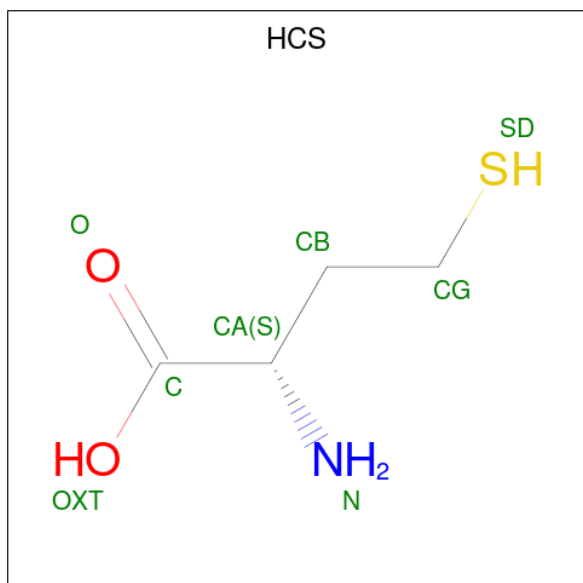
There are 4 unique types of molecules in this entry. The entry contains 4885 atoms, of which 0 are hydrogens and 0 are deuteriums.

In the tables below, the ZeroOcc column contains the number of atoms modelled with zero occupancy, the AltConf column contains the number of residues with at least one atom in alternate conformation and the Trace column contains the number of residues modelled with at most 2 atoms.

- Molecule 1 is a protein called NG, NG-DIMETHYLARGININE DIMETHYLAMINOHYDROLASE 1.

Mol	Chain	Residues	Atoms					ZeroOcc	AltConf	Trace
			Total	C	N	O	S			
1	A	272	Total 2101	C 1318	N 365	O 406	S 12	0	0	0
1	B	273	Total 2108	C 1322	N 366	O 408	S 12	0	0	0

- Molecule 2 is 2-AMINO-4-MERCAPTO-BUTYRIC ACID (CCD ID: HCS) (formula:  $C_4H_9NO_2S$ ).



Mol	Chain	Residues	Atoms					ZeroOcc	AltConf
			Total	C	N	O	S		
2	A	1	Total 8	C 4	N 1	O 2	S 1	0	0
2	B	1	Total 8	C 4	N 1	O 2	S 1	0	0

- Molecule 3 is CITRIC ACID (CCD ID: CIT) (formula:  $C_6H_8O_7$ ).



Mol	Chain	Residues	Atoms		ZeroOcc	AltConf
3	B	1	Total	C O	0	0
			13	6 7		

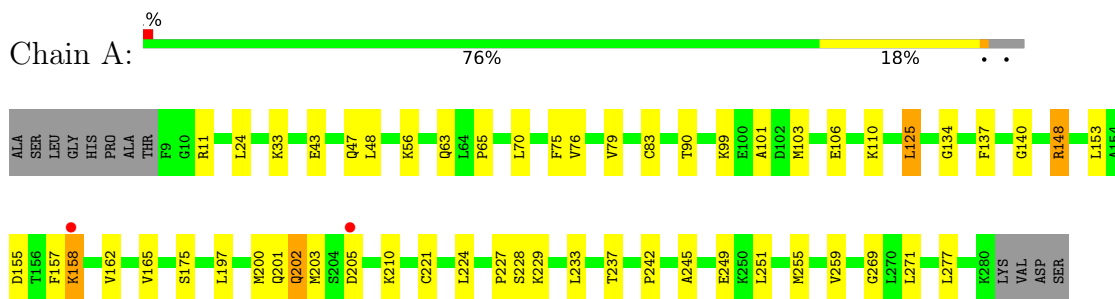
- Molecule 4 is water.

Mol	Chain	Residues	Atoms		ZeroOcc	AltConf
4	A	329	Total	O	0	0
			329	329		
4	B	318	Total	O	0	0
			318	318		

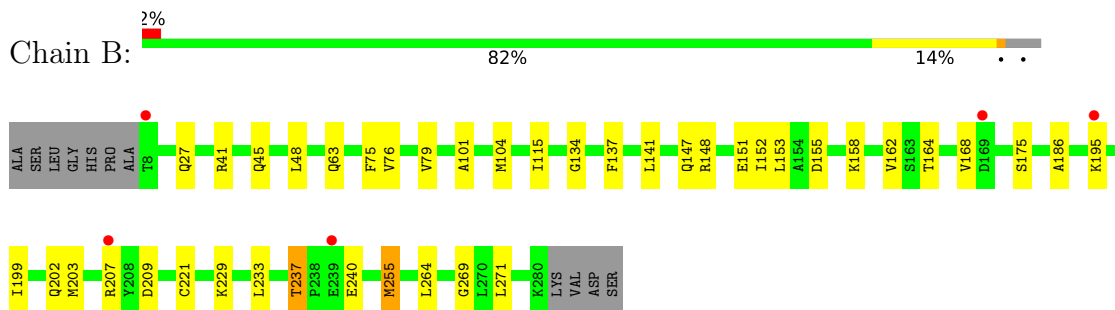
### 3 Residue-property plots [i](#)

These plots are drawn for all protein, RNA, DNA and oligosaccharide chains in the entry. The first graphic for a chain summarises the proportions of the various outlier classes displayed in the second graphic. The second graphic shows the sequence view annotated by issues in geometry and electron density. Residues are color-coded according to the number of geometric quality criteria for which they contain at least one outlier: green = 0, yellow = 1, orange = 2 and red = 3 or more. A red dot above a residue indicates a poor fit to the electron density ( $RSRZ > 2$ ). Stretches of 2 or more consecutive residues without any outlier are shown as a green connector. Residues present in the sample, but not in the model, are shown in grey.

- Molecule 1: NG, NG-DIMETHYLARGININE DIMETHYLAMINOHYDROLASE 1



- Molecule 1: NG, NG-DIMETHYLARGININE DIMETHYLAMINOHYDROLASE 1



## 4 Data and refinement statistics

Property	Value	Source
Space group	P 1 21 1	Depositor
Cell constants a, b, c, $\alpha$ , $\beta$ , $\gamma$	44.60Å 79.36Å 78.62Å 90.00° 104.80° 90.00°	Depositor
Resolution (Å)	29.20 – 1.79 29.20 – 1.79	Depositor EDS
% Data completeness (in resolution range)	97.2 (29.20-1.79) 97.4 (29.20-1.79)	Depositor EDS
$R_{merge}$	0.13	Depositor
$R_{sym}$	(Not available)	Depositor
$\langle I/\sigma(I) \rangle$ <sup>1</sup>	1.79 (at 1.79Å)	Xtrriage
Refinement program	CNS 1.1	Depositor
R, $R_{free}$	0.176 , 0.211 0.176 , 0.212	Depositor DCC
$R_{free}$ test set	2422 reflections (5.00%)	wwPDB-VP
Wilson B-factor (Å <sup>2</sup> )	12.6	Xtrriage
Anisotropy	0.330	Xtrriage
Bulk solvent $k_{sol}$ (e/Å <sup>3</sup> ), $B_{sol}$ (Å <sup>2</sup> )	0.36 , 45.0	EDS
L-test for twinning <sup>2</sup>	$\langle  L  \rangle = 0.50$ , $\langle L^2 \rangle = 0.34$	Xtrriage
Estimated twinning fraction	0.012 for h,-k,-h-l	Xtrriage
$F_o, F_c$ correlation	0.95	EDS
Total number of atoms	4885	wwPDB-VP
Average B, all atoms (Å <sup>2</sup> )	15.0	wwPDB-VP

Xtrriage's analysis on translational NCS is as follows: *The analyses of the Patterson function reveals a significant off-origin peak that is 42.69 % of the origin peak, indicating pseudo-translational symmetry. The chance of finding a peak of this or larger height randomly in a structure without pseudo-translational symmetry is equal to 1.9674e-04. The detected translational NCS is most likely also responsible for the elevated intensity ratio.*

<sup>1</sup>Intensities estimated from amplitudes.

<sup>2</sup>Theoretical values of  $\langle |L| \rangle$ ,  $\langle L^2 \rangle$  for acentric reflections are 0.5, 0.333 respectively for untwinned datasets, and 0.375, 0.2 for perfectly twinned datasets.

## 5 Model quality [i](#)

### 5.1 Standard geometry [i](#)

Bond lengths and bond angles in the following residue types are not validated in this section: HCS, CIT

The Z score for a bond length (or angle) is the number of standard deviations the observed value is removed from the expected value. A bond length (or angle) with  $|Z| > 5$  is considered an outlier worth inspection. RMSZ is the root-mean-square of all Z scores of the bond lengths (or angles).

Mol	Chain	Bond lengths		Bond angles	
		RMSZ	# Z  >5	RMSZ	# Z  >5
1	A	0.43	0/2133	0.97	6/2884 (0.2%)
1	B	0.43	0/2140	0.99	11/2894 (0.4%)
All	All	0.43	0/4273	0.98	17/5778 (0.3%)

There are no bond length outliers.

The worst 5 of 17 bond angle outliers are listed below:

Mol	Chain	Res	Type	Atoms	Z	Observed(°)	Ideal(°)
1	B	209	ASP	N-CA-C	-6.84	101.31	110.55
1	A	271	LEU	N-CA-C	6.67	118.20	111.07
1	A	134	GLY	N-CA-C	-6.33	107.16	114.69
1	A	175	SER	N-CA-C	-6.03	105.88	113.18
1	B	255	MET	N-CA-C	-5.96	98.82	108.41

There are no chirality outliers.

There are no planarity outliers.

### 5.2 Too-close contacts [i](#)

In the following table, the Non-H and H(model) columns list the number of non-hydrogen atoms and hydrogen atoms in the chain respectively. The H(added) column lists the number of hydrogen atoms added and optimized by MolProbity. The Clashes column lists the number of clashes within the asymmetric unit, whereas Symm-Clashes lists symmetry-related clashes.

Mol	Chain	Non-H	H(model)	H(added)	Clashes	Symm-Clashes
1	A	2101	0	2127	44	0
1	B	2108	0	2134	25	0
2	A	8	0	8	0	0
2	B	8	0	8	0	0

*Continued on next page...*

Continued from previous page...

Mol	Chain	Non-H	H(model)	H(added)	Clashes	Symm-Clashes
3	B	13	0	5	3	0
4	A	329	0	0	6	0
4	B	318	0	0	7	0
All	All	4885	0	4282	70	0

The all-atom clashscore is defined as the number of clashes found per 1000 atoms (including hydrogen atoms). The all-atom clashscore for this structure is 8.

The worst 5 of 70 close contacts within the same asymmetric unit are listed below, sorted by their clash magnitude.

Atom-1	Atom-2	Interatomic distance (Å)	Clash overlap (Å)
1:A:158:LYS:HD3	1:A:158:LYS:H	1.29	0.97
1:A:201:GLN:OE1	1:A:210:LYS:HE2	1.80	0.81
1:B:79:VAL:HG21	1:B:101:ALA:HA	1.68	0.75
1:A:202:GLN:HG2	1:A:203:MET:HE2	1.69	0.74
1:B:229:LYS:HD2	1:B:255:MET:HE1	1.76	0.68

There are no symmetry-related clashes.

## 5.3 Torsion angles [i](#)

### 5.3.1 Protein backbone [i](#)

In the following table, the Percentiles column shows the percent Ramachandran outliers of the chain as a percentile score with respect to all X-ray entries followed by that with respect to entries of similar resolution.

The Analysed column shows the number of residues for which the backbone conformation was analysed, and the total number of residues.

Mol	Chain	Analysed	Favoured	Allowed	Outliers	Percentiles	
1	A	270/284 (95%)	262 (97%)	8 (3%)	0	100	100
1	B	271/284 (95%)	260 (96%)	11 (4%)	0	100	100
All	All	541/568 (95%)	522 (96%)	19 (4%)	0	100	100

There are no Ramachandran outliers to report.

### 5.3.2 Protein sidechains [i](#)

In the following table, the Percentiles column shows the percent sidechain outliers of the chain as a percentile score with respect to all X-ray entries followed by that with respect to entries of similar resolution.

The Analysed column shows the number of residues for which the sidechain conformation was analysed, and the total number of residues.

Mol	Chain	Analysed	Rotameric	Outliers	Percentiles
1	A	233/242 (96%)	228 (98%)	5 (2%)	47 36
1	B	234/242 (97%)	233 (100%)	1 (0%)	84 83
All	All	467/484 (96%)	461 (99%)	6 (1%)	61 54

5 of 6 residues with a non-rotameric sidechain are listed below:

Mol	Chain	Res	Type
1	A	202	GLN
1	A	205	ASP
1	B	63	GLN
1	A	148	ARG
1	A	125	LEU

Sometimes sidechains can be flipped to improve hydrogen bonding and reduce clashes. 5 of 11 such sidechains are listed below:

Mol	Chain	Res	Type
1	B	63	GLN
1	B	147	GLN
1	B	279	ASN
1	B	194	GLN
1	A	279	ASN

### 5.3.3 RNA [i](#)

There are no RNA molecules in this entry.

## 5.4 Non-standard residues in protein, DNA, RNA chains [i](#)

There are no non-standard protein/DNA/RNA residues in this entry.

## 5.5 Carbohydrates [i](#)

There are no oligosaccharides in this entry.

## 5.6 Ligand geometry [i](#)

3 ligands are modelled in this entry.

In the following table, the Counts columns list the number of bonds (or angles) for which Mogul statistics could be retrieved, the number of bonds (or angles) that are observed in the model and the number of bonds (or angles) that are defined in the Chemical Component Dictionary. The Link column lists molecule types, if any, to which the group is linked. The Z score for a bond length (or angle) is the number of standard deviations the observed value is removed from the expected value. A bond length (or angle) with  $|Z| > 2$  is considered an outlier worth inspection. RMSZ is the root-mean-square of all Z scores of the bond lengths (or angles).

Mol	Type	Chain	Res	Link	Bond lengths			Bond angles		
					Counts	RMSZ	# Z  > 2	Counts	RMSZ	# Z  > 2
3	CIT	B	1282	-	12,12,12	1.16	2 (16%)	17,17,17	1.46	2 (11%)
2	HCS	A	1281	-	6,7,7	1.02	1 (16%)	5,8,8	1.04	0
2	HCS	B	1281	-	6,7,7	1.00	1 (16%)	5,8,8	1.08	0

In the following table, the Chirals column lists the number of chiral outliers, the number of chiral centers analysed, the number of these observed in the model and the number defined in the Chemical Component Dictionary. Similar counts are reported in the Torsion and Rings columns. '-' means no outliers of that kind were identified.

Mol	Type	Chain	Res	Link	Chirals	Torsions	Rings
3	CIT	B	1282	-	-	2/16/16/16	-
2	HCS	A	1281	-	-	0/7/7/7	-
2	HCS	B	1281	-	-	0/7/7/7	-

All (4) bond length outliers are listed below:

Mol	Chain	Res	Type	Atoms	Z	Observed(Å)	Ideal(Å)
3	B	1282	CIT	O4-C5	-2.28	1.23	1.30
2	A	1281	HCS	OXT-C	-2.24	1.23	1.30
2	B	1281	HCS	OXT-C	-2.22	1.23	1.30
3	B	1282	CIT	O2-C1	-2.15	1.23	1.30

All (2) bond angle outliers are listed below:

Mol	Chain	Res	Type	Atoms	Z	Observed(°)	Ideal(°)
3	B	1282	CIT	O6-C6-C3	3.74	120.32	113.14
3	B	1282	CIT	O2-C1-C2	2.23	121.42	114.35

There are no chirality outliers.

All (2) torsion outliers are listed below:

Mol	Chain	Res	Type	Atoms
3	B	1282	CIT	C3-C4-C5-O4
3	B	1282	CIT	C3-C4-C5-O3

There are no ring outliers.

1 monomer is involved in 3 short contacts:

Mol	Chain	Res	Type	Clashes	Symm-Clashes
3	B	1282	CIT	3	0

## 5.7 Other polymers [i](#)

There are no such residues in this entry.

## 5.8 Polymer linkage issues [i](#)

There are no chain breaks in this entry.

## 6 Fit of model and data [i](#)

### 6.1 Protein, DNA and RNA chains [i](#)

In the following table, the column labelled ‘#RSRZ > 2’ contains the number (and percentage) of RSRZ outliers, followed by percent RSRZ outliers for the chain as percentile scores relative to all X-ray entries and entries of similar resolution. The OWAB column contains the minimum, median, 95<sup>th</sup> percentile and maximum values of the occupancy-weighted average B-factor per residue. The column labelled ‘Q < 0.9’ lists the number of (and percentage) of residues with an average occupancy less than 0.9.

Mol	Chain	Analysed	<RSRZ>	#RSRZ>2	OWAB(Å <sup>2</sup> )	Q<0.9
1	A	272/284 (95%)	-0.14	2 (0%) 84 85	6, 12, 25, 33	0
1	B	273/284 (96%)	-0.24	5 (1%) 67 68	5, 11, 24, 34	0
All	All	545/568 (95%)	-0.19	7 (1%) 75 75	5, 12, 24, 34	0

The worst 5 of 7 RSRZ outliers are listed below:

Mol	Chain	Res	Type	RSRZ
1	B	169	ASP	3.4
1	B	207	ARG	2.5
1	B	8	THR	2.5
1	A	205	ASP	2.3
1	B	195	LYS	2.3

### 6.2 Non-standard residues in protein, DNA, RNA chains [i](#)

There are no non-standard protein/DNA/RNA residues in this entry.

### 6.3 Carbohydrates [i](#)

There are no oligosaccharides in this entry.

### 6.4 Ligands [i](#)

In the following table, the Atoms column lists the number of modelled atoms in the group and the number defined in the chemical component dictionary. The B-factors column lists the minimum, median, 95<sup>th</sup> percentile and maximum values of B factors of atoms in the group. The column labelled ‘Q < 0.9’ lists the number of atoms with occupancy less than 0.9.

Mol	Type	Chain	Res	Atoms	RSCC	RSR	B-factors( $\text{\AA}^2$ )	Q<0.9
3	CIT	B	1282	13/13	0.72	0.14	33,37,39,39	0
2	HCS	B	1281	8/8	0.98	0.04	5,9,10,10	0
2	HCS	A	1281	8/8	0.98	0.05	7,9,10,10	0

## 6.5 Other polymers [i](#)

There are no such residues in this entry.