



Full wwPDB X-ray Structure Validation Report ⓘ

Mar 7, 2026 – 01:38 AM UTC

PDB ID : 1CS4 / pdb_00001cs4
Title : COMPLEX OF GS-ALPHA WITH THE CATALYTIC DOMAINS OF MAMMALIAN ADENYLYL CYCLASE: COMPLEX WITH 2'-DEOXY-ADENOSINE 3'-MONOPHOSPHATE, PYROPHOSPHATE AND MG
Authors : Tesmer, J.J.G.; Dessauer, C.A.; Sunahara, R.K.; Johnson, R.A.; Gilman, A.G.; Sprang, S.R.
Deposited on : 1999-08-16
Resolution : 2.50 Å(reported)

This is a Full wwPDB X-ray Structure Validation Report for a publicly released PDB entry.

We welcome your comments at validation@mail.wwpdb.org

A user guide is available at

<https://www.wwpdb.org/validation/2017/XrayValidationReportHelp>

with specific help available everywhere you see the ⓘ symbol.

The types of validation reports are described at

<http://www.wwpdb.org/validation/2017/FAQs#types>.

The following versions of software and data (see [references](#) ①) were used in the production of this report:

MolProbity : 4-5-2 with Phenix2.0
Mogul : 2022.3.0, CSD as543be (2022)
Xtrriage (Phenix) : 2.0
EDS : 3.0
Buster-report : wwPDB partial adaption of 1.1.7 (2018)
Percentile statistics : 20250101.v01 (using entries in the PDB archive January 1st 2025)
CCP4 : 9.0.010 (Gargrove)
Density-Fitness : 1.0.12
Ideal geometry (proteins) : Engh & Huber (2001)
Ideal geometry (DNA, RNA) : Parkinson et al. (1996)
Validation Pipeline (wwPDB-VP) : 2.49

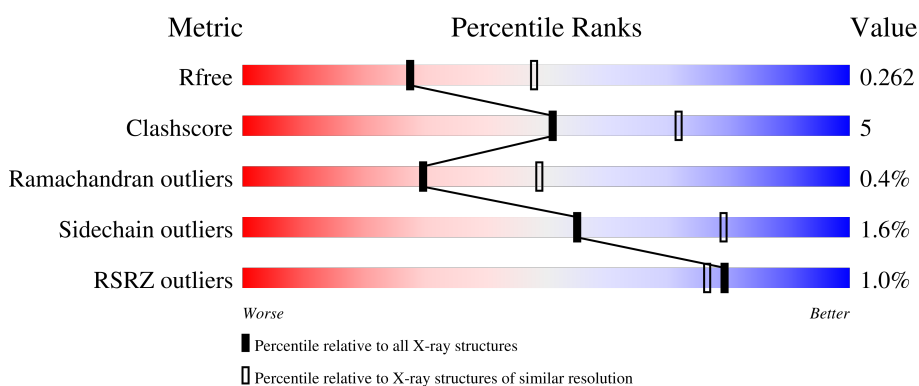
1 Overall quality at a glance i

The following experimental techniques were used to determine the structure:

X-RAY DIFFRACTION

The reported resolution of this entry is 2.50 Å.

Percentile scores (ranging between 0-100) for global validation metrics of the entry are shown in the following graphic. The table shows the number of entries on which the scores are based.



Metric	Whole archive (#Entries)	Similar resolution (#Entries, resolution range(Å))
R_{free}	180053	5829 (2.50-2.50)
Clashscore	190562	6492 (2.50-2.50)
Ramachandran outliers	187476	6378 (2.50-2.50)
Sidechain outliers	187428	6380 (2.50-2.50)
RSRZ outliers	180081	5833 (2.50-2.50)

The table below summarises the geometric issues observed across the polymeric chains and their fit to the electron density. The red, orange, yellow and green segments of the lower bar indicate the fraction of residues that contain outliers for ≥ 3 , 2, 1 and 0 types of geometric quality criteria respectively. A grey segment represents the fraction of residues that are not modelled. The numeric value for each fraction is indicated below the corresponding segment, with a dot representing fractions $\leq 5\%$. The upper red bar (where present) indicates the fraction of residues that have poor fit to the electron density. The numeric value is given above the bar.

Mol	Chain	Length	Quality of chain
1	A	225	 67% 16% • 16%
2	B	212	 % 78% 10% • 10%
3	C	394	 % 75% 8% • 16%

2 Entry composition [i](#)

There are 11 unique types of molecules in this entry. The entry contains 5843 atoms, of which 0 are hydrogens and 0 are deuteriums.

In the tables below, the ZeroOcc column contains the number of atoms modelled with zero occupancy, the AltConf column contains the number of residues with at least one atom in alternate conformation and the Trace column contains the number of residues modelled with at most 2 atoms.

- Molecule 1 is a protein called TYPE V ADENYLATE CYCLASE.

Mol	Chain	Residues	Atoms					ZeroOcc	AltConf	Trace
			Total	C	N	O	S			
1	A	189	1476	929	259	271	17	0	0	0

There is a discrepancy between the modelled and reference sequences:

Chain	Residue	Modelled	Actual	Comment	Reference
A	476	MET	VAL	engineered mutation	UNP P30803

- Molecule 2 is a protein called TYPE II ADENYLATE CYCLASE.

Mol	Chain	Residues	Atoms					ZeroOcc	AltConf	Trace
			Total	C	N	O	S			
2	B	190	1479	945	243	281	10	0	0	0

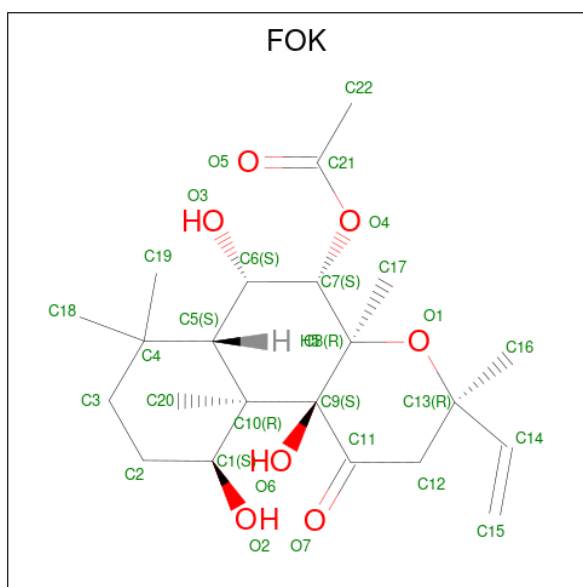
- Molecule 3 is a protein called GUANINE NUCLEOTIDE-BINDING PROTEIN G(S).

Mol	Chain	Residues	Atoms					ZeroOcc	AltConf	Trace
			Total	C	N	O	S			
3	C	329	2692	1708	467	504	13	0	0	0

- Molecule 4 is MAGNESIUM ION (CCD ID: MG) (formula: Mg).

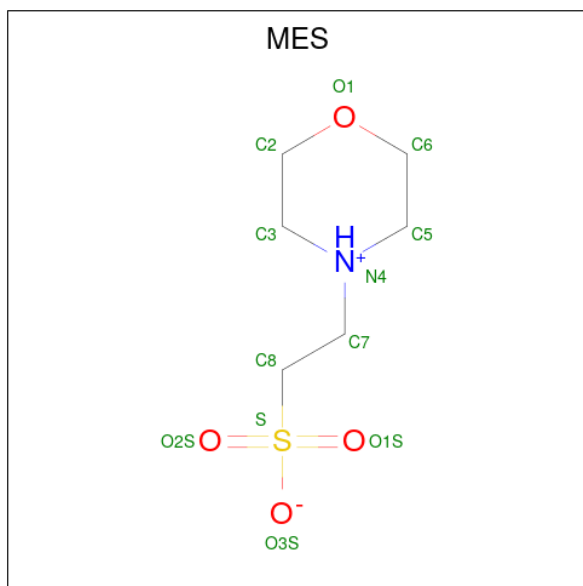
Mol	Chain	Residues	Atoms		ZeroOcc	AltConf
4	A	1	Total	Mg	0	0
			1	1		
4	C	1	Total	Mg	0	0
			1	1		

- Molecule 5 is FORSKOLIN (CCD ID: FOK) (formula: C₂₂H₃₄O₇).



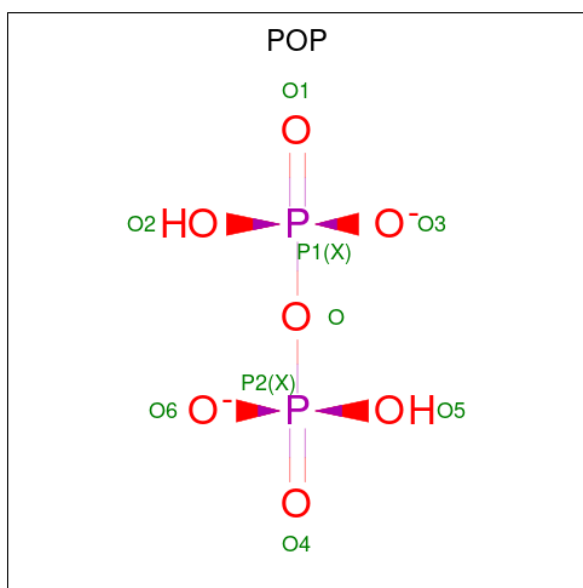
Mol	Chain	Residues	Atoms				ZeroOcc	AltConf
5	A	1	Total	C	O		0	0
			29	22	7			

- Molecule 6 is 2-(N-MORPHOLINO)-ETHANESULFONIC ACID (CCD ID: MES) (formula: $C_6H_{13}NO_4S$).



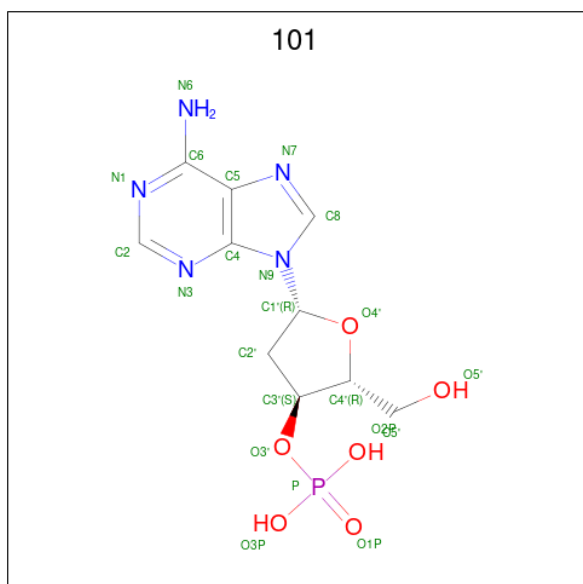
Mol	Chain	Residues	Atoms					ZeroOcc	AltConf
6	A	1	Total	C	N	O	S	0	0
			12	6	1	4	1		
6	B	1	Total	C	N	O	S	0	0
			12	6	1	4	1		

- Molecule 7 is PYROPHOSPHATE 2- (CCD ID: POP) (formula: $\text{H}_2\text{O}_7\text{P}_2$).



Mol	Chain	Residues	Atoms				ZeroOcc	AltConf
7	A	1	Total	O	P			
			9	7	2	0	0	

- Molecule 8 is 2'-DEOXY-ADENOSINE 3'-MONOPHOSPHATE (CCD ID: 101) (formula: $\text{C}_{10}\text{H}_{14}\text{N}_5\text{O}_6\text{P}$).

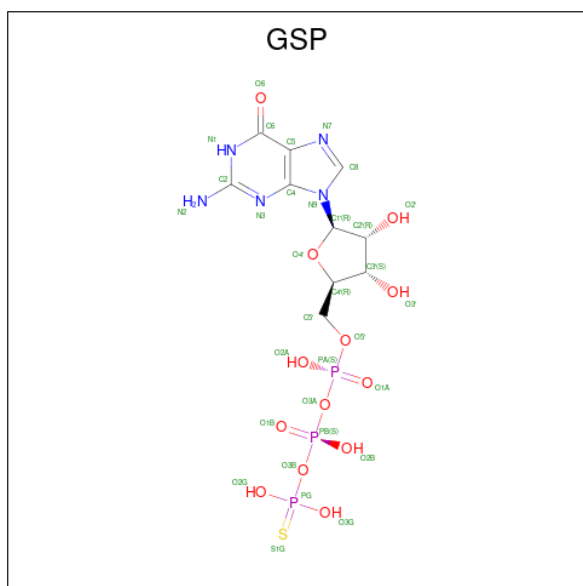


Mol	Chain	Residues	Atoms					ZeroOcc	AltConf
8	B	1	Total	C	N	O	P		
			22	10	5	6	1	0	

- Molecule 9 is CHLORIDE ION (CCD ID: CL) (formula: Cl).

Mol	Chain	Residues	Atoms	ZeroOcc	AltConf
9	C	1	Total Cl 1 1	0	0

- Molecule 10 is 5'-GUANOSINE-DIPHOSPHATE-MONOTHIOPHOSPHATE (CCD ID: GSP) (formula: C₁₀H₁₆N₅O₁₃P₃S).



Mol	Chain	Residues	Atoms	ZeroOcc	AltConf
10	C	1	Total C N O P S 32 10 5 13 3 1	0	0

- Molecule 11 is water.

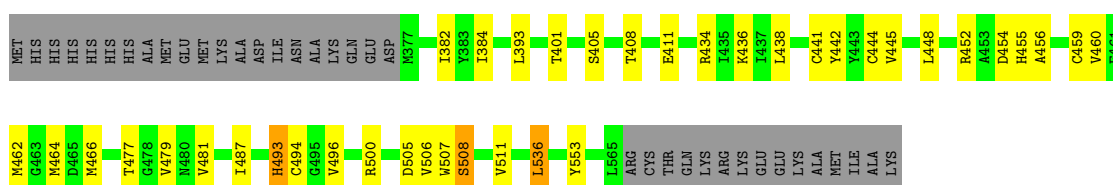
Mol	Chain	Residues	Atoms	ZeroOcc	AltConf
11	A	11	Total O 11 11	0	0
11	B	31	Total O 31 31	0	0
11	C	35	Total O 35 35	0	0

3 Residue-property plots [i](#)


These plots are drawn for all protein, RNA, DNA and oligosaccharide chains in the entry. The first graphic for a chain summarises the proportions of the various outlier classes displayed in the second graphic. The second graphic shows the sequence view annotated by issues in geometry and electron density. Residues are color-coded according to the number of geometric quality criteria for which they contain at least one outlier: green = 0, yellow = 1, orange = 2 and red = 3 or more. A red dot above a residue indicates a poor fit to the electron density ($RSRZ > 2$). Stretches of 2 or more consecutive residues without any outlier are shown as a green connector. Residues present in the sample, but not in the model, are shown in grey.

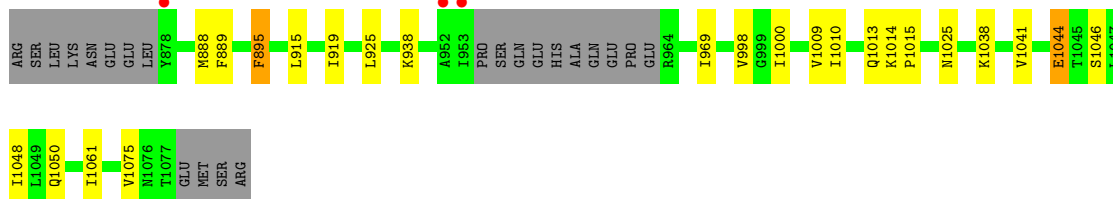
- Molecule 1: TYPE V ADENYLATE CYCLASE

Chain A: 




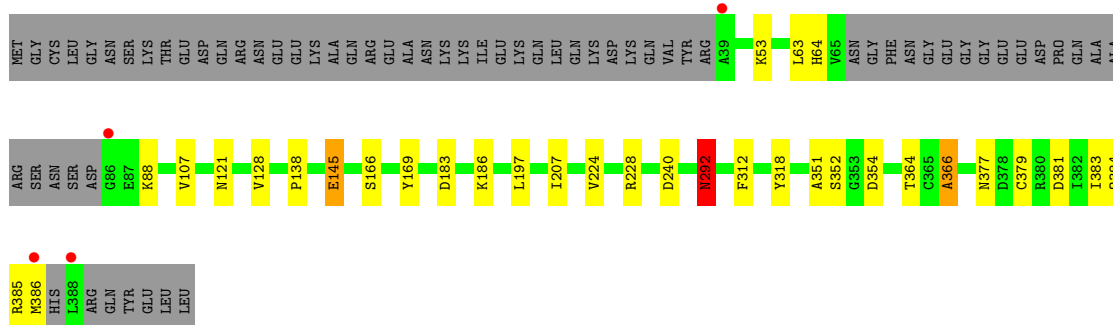
- Molecule 2: TYPE II ADENYLATE CYCLASE

Chain B: 



- Molecule 3: GUANINE NUCLEOTIDE-BINDING PROTEIN G(S)

Chain C: 



4 Data and refinement statistics

Property	Value	Source
Space group	P 21 21 2	Depositor
Cell constants a, b, c, α , β , γ	118.50Å 134.50Å 71.30Å 90.00° 90.00° 90.00°	Depositor
Resolution (Å)	15.00 – 2.50 15.00 – 2.50	Depositor EDS
% Data completeness (in resolution range)	90.1 (15.00-2.50) 89.7 (15.00-2.50)	Depositor EDS
R_{merge}	0.11	Depositor
R_{sym}	(Not available)	Depositor
$\langle I/\sigma(I) \rangle$ ¹	3.30 (at 2.51Å)	Xtrriage
Refinement program	CNS	Depositor
R, R_{free}	0.216 , 0.264 0.218 , 0.262	Depositor DCC
R_{free} test set	7094 reflections (10.06%)	wwPDB-VP
Wilson B-factor (Å ²)	40.8	Xtrriage
Anisotropy	1.051	Xtrriage
Bulk solvent k_{sol} (e/Å ³), B_{sol} (Å ²)	0.36 , 43.1	EDS
L-test for twinning ²	$\langle L \rangle = 0.49$, $\langle L^2 \rangle = 0.32$	Xtrriage
Estimated twinning fraction	No twinning to report.	Xtrriage
F_o, F_c correlation	0.94	EDS
Total number of atoms	5843	wwPDB-VP
Average B, all atoms (Å ²)	50.0	wwPDB-VP

Xtrriage's analysis on translational NCS is as follows: *The largest off-origin peak in the Patterson function is 3.66% of the height of the origin peak. No significant pseudotranslation is detected.*

¹Intensities estimated from amplitudes.

²Theoretical values of $\langle |L| \rangle$, $\langle L^2 \rangle$ for acentric reflections are 0.5, 0.333 respectively for untwinned datasets, and 0.375, 0.2 for perfectly twinned datasets.

5 Model quality [i](#)

5.1 Standard geometry [i](#)

Bond lengths and bond angles in the following residue types are not validated in this section: CL, MES, GSP, MG, POP, FOK, 101

The Z score for a bond length (or angle) is the number of standard deviations the observed value is removed from the expected value. A bond length (or angle) with $|Z| > 5$ is considered an outlier worth inspection. RMSZ is the root-mean-square of all Z scores of the bond lengths (or angles).

Mol	Chain	Bond lengths		Bond angles	
		RMSZ	# Z >5	RMSZ	# Z >5
1	A	0.43	0/1504	0.89	3/2027 (0.1%)
2	B	0.44	0/1505	0.89	3/2032 (0.1%)
3	C	0.45	0/2748	0.95	13/3718 (0.3%)
All	All	0.44	0/5757	0.92	19/7777 (0.2%)

There are no bond length outliers.

All (19) bond angle outliers are listed below:

Mol	Chain	Res	Type	Atoms	Z	Observed(°)	Ideal(°)
3	C	312	PHE	CA-C-N	6.57	126.81	119.32
3	C	312	PHE	C-N-CA	6.57	126.81	119.32
3	C	121	ASN	CA-C-N	6.40	126.33	119.28
3	C	121	ASN	C-N-CA	6.40	126.33	119.28
2	B	998	VAL	N-CA-C	6.37	118.57	108.89
2	B	925	LEU	N-CA-C	-6.06	105.14	112.54
3	C	352	SER	N-CA-C	5.89	117.16	108.86
3	C	366	ALA	N-CA-C	5.73	118.26	111.33
1	A	493	HIS	N-CA-C	-5.71	99.60	108.90
1	A	436	LYS	N-CA-C	5.67	117.41	108.96
3	C	64	HIS	N-CA-C	5.49	120.68	112.94
3	C	228	ARG	N-CA-C	5.43	120.33	111.37
3	C	364	THR	N-CA-C	5.36	117.56	109.41
3	C	351	ALA	N-CA-C	5.22	117.72	111.71
3	C	63	LEU	N-CA-C	5.18	118.06	111.69
1	A	455	HIS	N-CA-C	5.17	121.82	110.80
2	B	895	PHE	N-CA-C	5.07	116.49	111.07
3	C	318	TYR	N-CA-C	5.05	117.47	109.24
3	C	292	ASN	N-CA-C	5.04	117.03	110.53

There are no chirality outliers.

There are no planarity outliers.

5.2 Too-close contacts

In the following table, the Non-H and H(model) columns list the number of non-hydrogen atoms and hydrogen atoms in the chain respectively. The H(added) column lists the number of hydrogen atoms added and optimized by MolProbity. The Clashes column lists the number of clashes within the asymmetric unit, whereas Symm-Clashes lists symmetry-related clashes.

Mol	Chain	Non-H	H(model)	H(added)	Clashes	Symm-Clashes
1	A	1476	0	1450	22	0
2	B	1479	0	1479	18	0
3	C	2692	0	2643	14	0
4	A	1	0	0	0	0
4	C	1	0	0	0	0
5	A	29	0	34	7	0
6	A	12	0	13	1	0
6	B	12	0	13	3	0
7	A	9	0	0	0	0
8	B	22	0	12	1	0
9	C	1	0	0	0	0
10	C	32	0	12	0	0
11	A	11	0	0	0	0
11	B	31	0	0	1	0
11	C	35	0	0	0	0
All	All	5843	0	5656	59	0

The all-atom clashscore is defined as the number of clashes found per 1000 atoms (including hydrogen atoms). The all-atom clashscore for this structure is 5.

All (59) close contacts within the same asymmetric unit are listed below, sorted by their clash magnitude.

Atom-1	Atom-2	Interatomic distance (Å)	Clash overlap (Å)
3:C:292:ASN:HD21	3:C:366:ALA:H	1.20	0.85
1:A:462:MET:HE3	1:A:466:MET:HE2	1.61	0.82
5:A:1002:FOK:H201	5:A:1002:FOK:H173	1.61	0.81
2:B:1038:LYS:HZ2	6:B:1083:MES:H31	1.53	0.72
3:C:381:ASP:O	3:C:385:ARG:HG2	1.90	0.70
2:B:1038:LYS:NZ	6:B:1083:MES:H31	2.07	0.69
5:A:1002:FOK:H202	5:A:1002:FOK:H193	1.80	0.62
5:A:1002:FOK:H152	2:B:895:PHE:HE1	1.64	0.61
3:C:292:ASN:HD21	3:C:366:ALA:N	1.97	0.59

Continued on next page...

Continued from previous page...

Atom-1	Atom-2	Interatomic distance (Å)	Clash overlap (Å)
2:B:1046:SER:O	2:B:1050:GLN:HG3	2.02	0.59
2:B:1014:LYS:HB3	2:B:1015:PRO:HD2	1.87	0.57
3:C:207:ILE:HG12	3:C:224:VAL:HG12	1.86	0.57
1:A:456:ALA:O	1:A:460:VAL:HG23	2.05	0.56
5:A:1002:FOK:H163	5:A:1002:FOK:H171	1.88	0.55
2:B:1025:ASN:OD1	8:B:1082:101:H8	2.07	0.54
1:A:507:TRP:O	1:A:508:SER:HB3	2.09	0.53
2:B:1000:ILE:HB	2:B:1041:VAL:HG12	1.91	0.53
1:A:438:LEU:HB2	1:A:441:CYS:HB3	1.92	0.52
3:C:107:VAL:HG13	3:C:128:VAL:HG13	1.92	0.52
2:B:969:ILE:HD12	2:B:1048:ILE:HG21	1.91	0.52
1:A:460:VAL:O	1:A:464:MET:HG2	2.10	0.51
1:A:445:VAL:HG21	1:A:448:LEU:HD12	1.93	0.51
1:A:452:ARG:HG2	1:A:454:ASP:H	1.75	0.50
2:B:1013:GLN:OE1	2:B:1014:LYS:HE2	2.11	0.49
1:A:401:THR:O	1:A:405:SER:HB2	2.13	0.49
5:A:1002:FOK:H201	5:A:1002:FOK:C17	2.40	0.49
5:A:1002:FOK:H152	2:B:895:PHE:CE1	2.46	0.48
3:C:183:ASP:HA	3:C:186:LYS:HE3	1.94	0.48
1:A:408:THR:HG23	1:A:411:GLU:H	1.78	0.48
3:C:384:GLN:HA	3:C:384:GLN:OE1	2.13	0.47
1:A:477:THR:HG22	1:A:479:VAL:HG23	1.97	0.47
1:A:462:MET:HG3	1:A:466:MET:HE3	1.96	0.47
3:C:88:LYS:HG2	3:C:197:LEU:HD11	1.97	0.47
3:C:107:VAL:CG1	3:C:128:VAL:HG13	2.45	0.46
1:A:505:ASP:HB3	1:A:507:TRP:CZ2	2.50	0.46
2:B:1061:ILE:HD12	2:B:1061:ILE:N	2.31	0.46
1:A:393:LEU:C	1:A:393:LEU:HD23	2.41	0.45
3:C:166:SER:HA	3:C:169:TYR:CE1	2.51	0.45
1:A:553:TYR:HB2	6:A:1003:MES:O3S	2.17	0.45
2:B:915:LEU:O	2:B:919:ILE:HG12	2.18	0.44
1:A:382:ILE:HD11	1:A:384:ILE:HD12	1.98	0.44
5:A:1002:FOK:H151	5:A:1002:FOK:H122	1.75	0.44
2:B:1009:VAL:HG11	2:B:1015:PRO:HA	1.99	0.43
3:C:145:GLU:H	3:C:145:GLU:HG3	1.57	0.43
3:C:53:LYS:HE2	3:C:53:LYS:HB2	1.67	0.43
1:A:434:ARG:HA	1:A:444:CYS:HB3	2.01	0.43
2:B:1044:GLU:CD	2:B:1044:GLU:H	2.26	0.43
2:B:1009:VAL:HG12	2:B:1010:ILE:N	2.35	0.42
1:A:508:SER:OG	1:A:511:VAL:HG23	2.20	0.41
1:A:459:CYS:HB3	1:A:487:ILE:HD13	2.03	0.41

Continued on next page...

Continued from previous page...

Atom-1	Atom-2	Interatomic distance (Å)	Clash overlap (Å)
1:A:462:MET:HG3	1:A:466:MET:CE	2.51	0.41
2:B:938:LYS:HD3	11:B:25:HOH:O	2.20	0.41
1:A:494:CYS:HB3	1:A:506:VAL:HG12	2.03	0.40
3:C:377:ASN:HD22	3:C:377:ASN:HA	1.68	0.40
1:A:460:VAL:HG21	1:A:536:LEU:HD21	2.03	0.40
2:B:1075:VAL:O	6:B:1083:MES:H52	2.20	0.40
1:A:434:ARG:HG3	1:A:442:TYR:CZ	2.57	0.40
2:B:888:MET:HG2	2:B:889:PHE:N	2.36	0.40
3:C:379:CYS:O	3:C:383:ILE:HG13	2.21	0.40

There are no symmetry-related clashes.

5.3 Torsion angles [i](#)

5.3.1 Protein backbone [i](#)

In the following table, the Percentiles column shows the percent Ramachandran outliers of the chain as a percentile score with respect to all X-ray entries followed by that with respect to entries of similar resolution.

The Analysed column shows the number of residues for which the backbone conformation was analysed, and the total number of residues.

Mol	Chain	Analysed	Favoured	Allowed	Outliers	Percentiles	
1	A	187/225 (83%)	178 (95%)	8 (4%)	1 (0%)	24	43
2	B	186/212 (88%)	180 (97%)	6 (3%)	0	100	100
3	C	325/394 (82%)	315 (97%)	8 (2%)	2 (1%)	21	38
All	All	698/831 (84%)	673 (96%)	22 (3%)	3 (0%)	30	49

All (3) Ramachandran outliers are listed below:

Mol	Chain	Res	Type
1	A	508	SER
3	C	138	PRO
3	C	354	ASP

5.3.2 Protein sidechains [i](#)

In the following table, the Percentiles column shows the percent sidechain outliers of the chain as a percentile score with respect to all X-ray entries followed by that with respect to entries of similar resolution.

The Analysed column shows the number of residues for which the sidechain conformation was analysed, and the total number of residues.

Mol	Chain	Analysed	Rotameric	Outliers	Percentiles	
1	A	158/189 (84%)	153 (97%)	5 (3%)	34	62
2	B	163/184 (89%)	162 (99%)	1 (1%)	78	91
3	C	296/351 (84%)	292 (99%)	4 (1%)	59	81
All	All	617/724 (85%)	607 (98%)	10 (2%)	55	79

All (10) residues with a non-rotameric sidechain are listed below:

Mol	Chain	Res	Type
1	A	481	VAL
1	A	493	HIS
1	A	496	VAL
1	A	500	ARG
1	A	536	LEU
2	B	1044	GLU
3	C	145	GLU
3	C	240	ASP
3	C	292	ASN
3	C	386	MET

Sometimes sidechains can be flipped to improve hydrogen bonding and reduce clashes. All (13) such sidechains are listed below:

Mol	Chain	Res	Type
1	A	385	GLN
1	A	480	ASN
1	A	537	ASN
2	B	989	HIS
2	B	1076	ASN
3	C	41	HIS
3	C	93	GLN
3	C	97	ASN
3	C	149	HIS
3	C	292	ASN
3	C	294	GLN

Continued on next page...

Continued from previous page...

Mol	Chain	Res	Type
3	C	362	HIS
3	C	377	ASN

5.3.3 RNA [i](#)

There are no RNA molecules in this entry.

5.4 Non-standard residues in protein, DNA, RNA chains [i](#)

There are no non-standard protein/DNA/RNA residues in this entry.

5.5 Carbohydrates [i](#)

There are no oligosaccharides in this entry.

5.6 Ligand geometry [i](#)

Of 9 ligands modelled in this entry, 3 are monoatomic - leaving 6 for Mogul analysis.

In the following table, the Counts columns list the number of bonds (or angles) for which Mogul statistics could be retrieved, the number of bonds (or angles) that are observed in the model and the number of bonds (or angles) that are defined in the Chemical Component Dictionary. The Link column lists molecule types, if any, to which the group is linked. The Z score for a bond length (or angle) is the number of standard deviations the observed value is removed from the expected value. A bond length (or angle) with $|Z| > 2$ is considered an outlier worth inspection. RMSZ is the root-mean-square of all Z scores of the bond lengths (or angles).

Mol	Type	Chain	Res	Link	Bond lengths			Bond angles		
					Counts	RMSZ	# Z > 2	Counts	RMSZ	# Z > 2
5	FOK	A	1002	-	29,31,31	0.80	0	38,54,54	0.82	0
6	MES	B	1083	-	12,12,12	1.15	1 (8%)	15,16,16	0.62	0
7	POP	A	1005	4	6,8,8	1.13	0	12,13,13	0.63	0
8	101	B	1082	4	24,24,24	0.64	0	36,36,36	0.58	1 (2%)
6	MES	A	1003	-	12,12,12	1.06	1 (8%)	15,16,16	0.50	0
10	GSP	C	1000	4	33,34,34	2.63	3 (9%)	47,54,54	0.60	0

In the following table, the Chirals column lists the number of chiral outliers, the number of chiral centers analysed, the number of these observed in the model and the number defined in the Chemical Component Dictionary. Similar counts are reported in the Torsion and Rings columns. '-' means no outliers of that kind were identified.

Mol	Type	Chain	Res	Link	Chirals	Torsions	Rings
5	FOK	A	1002	-	-	6/7/80/80	0/3/3/3
6	MES	B	1083	-	-	2/6/14/14	0/1/1/1
7	POP	A	1005	4	-	3/6/6/6	-
8	101	B	1082	4	-	1/11/23/23	0/3/3/3
6	MES	A	1003	-	-	1/6/14/14	0/1/1/1
10	GSP	C	1000	4	-	1/21/38/38	0/3/3/3

All (5) bond length outliers are listed below:

Mol	Chain	Res	Type	Atoms	Z	Observed(Å)	Ideal(Å)
10	C	1000	GSP	PA-O3A	-8.78	1.50	1.59
10	C	1000	GSP	PB-O3A	-8.49	1.50	1.59
10	C	1000	GSP	PB-O3B	-8.03	1.50	1.59
6	B	1083	MES	C5-N4	3.55	1.56	1.46
6	A	1003	MES	C5-N4	3.47	1.56	1.46

All (1) bond angle outliers are listed below:

Mol	Chain	Res	Type	Atoms	Z	Observed(°)	Ideal(°)
8	B	1082	101	O2P-P-O1P	2.17	119.27	110.83

There are no chirality outliers.

All (14) torsion outliers are listed below:

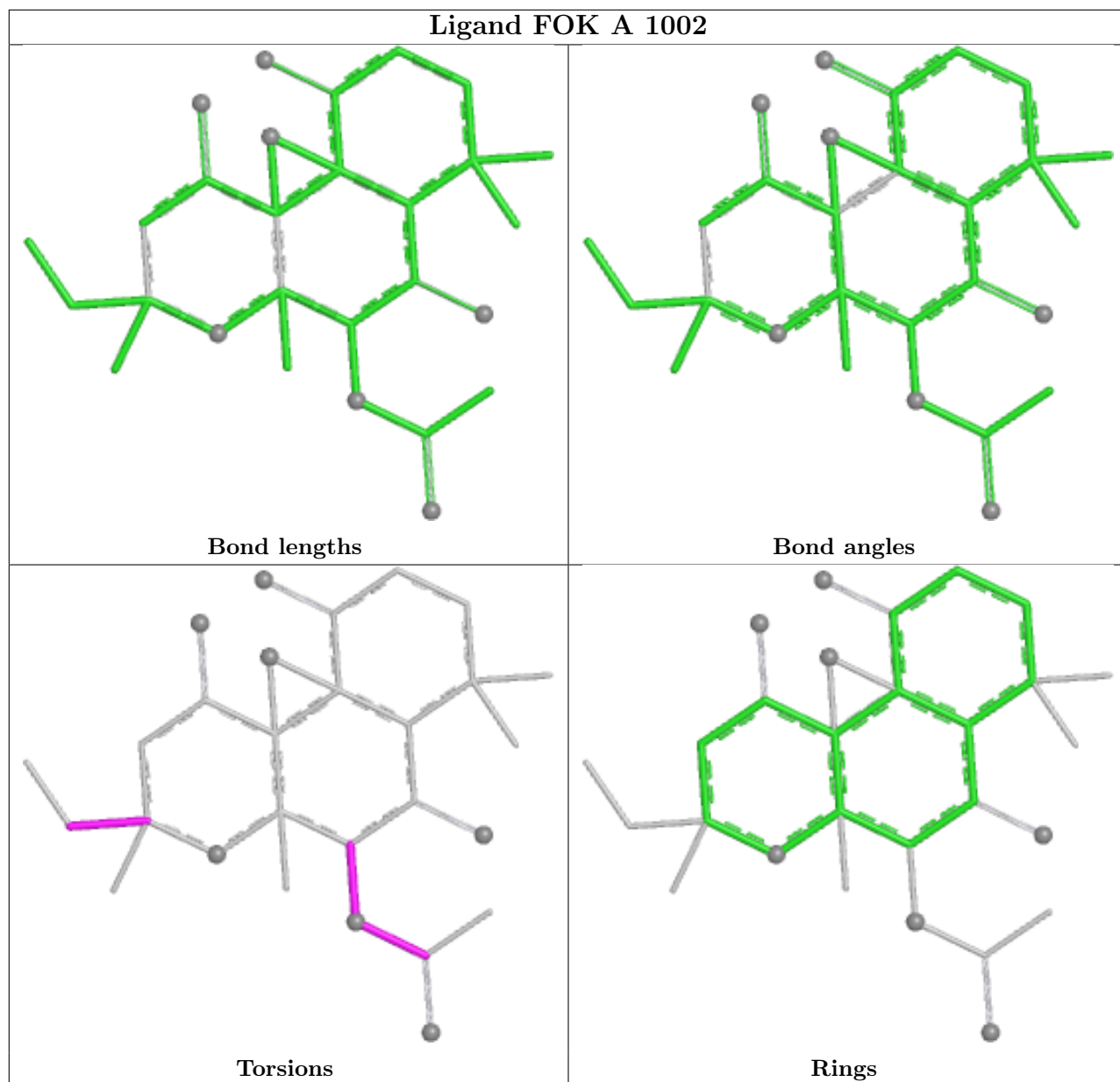
Mol	Chain	Res	Type	Atoms
6	B	1083	MES	C8-C7-N4-C3
6	B	1083	MES	N4-C7-C8-S
7	A	1005	POP	P1-O-P2-O5
7	A	1005	POP	P1-O-P2-O6
5	A	1002	FOK	C22-C21-O4-C7
5	A	1002	FOK	O5-C21-O4-C7
5	A	1002	FOK	C8-C7-O4-C21
6	A	1003	MES	N4-C7-C8-S
5	A	1002	FOK	C6-C7-O4-C21
5	A	1002	FOK	O1-C13-C14-C15
10	C	1000	GSP	PA-O3A-PB-O2B
8	B	1082	101	C3'-O3'-P-O3P
7	A	1005	POP	P1-O-P2-O4
5	A	1002	FOK	C16-C13-C14-C15

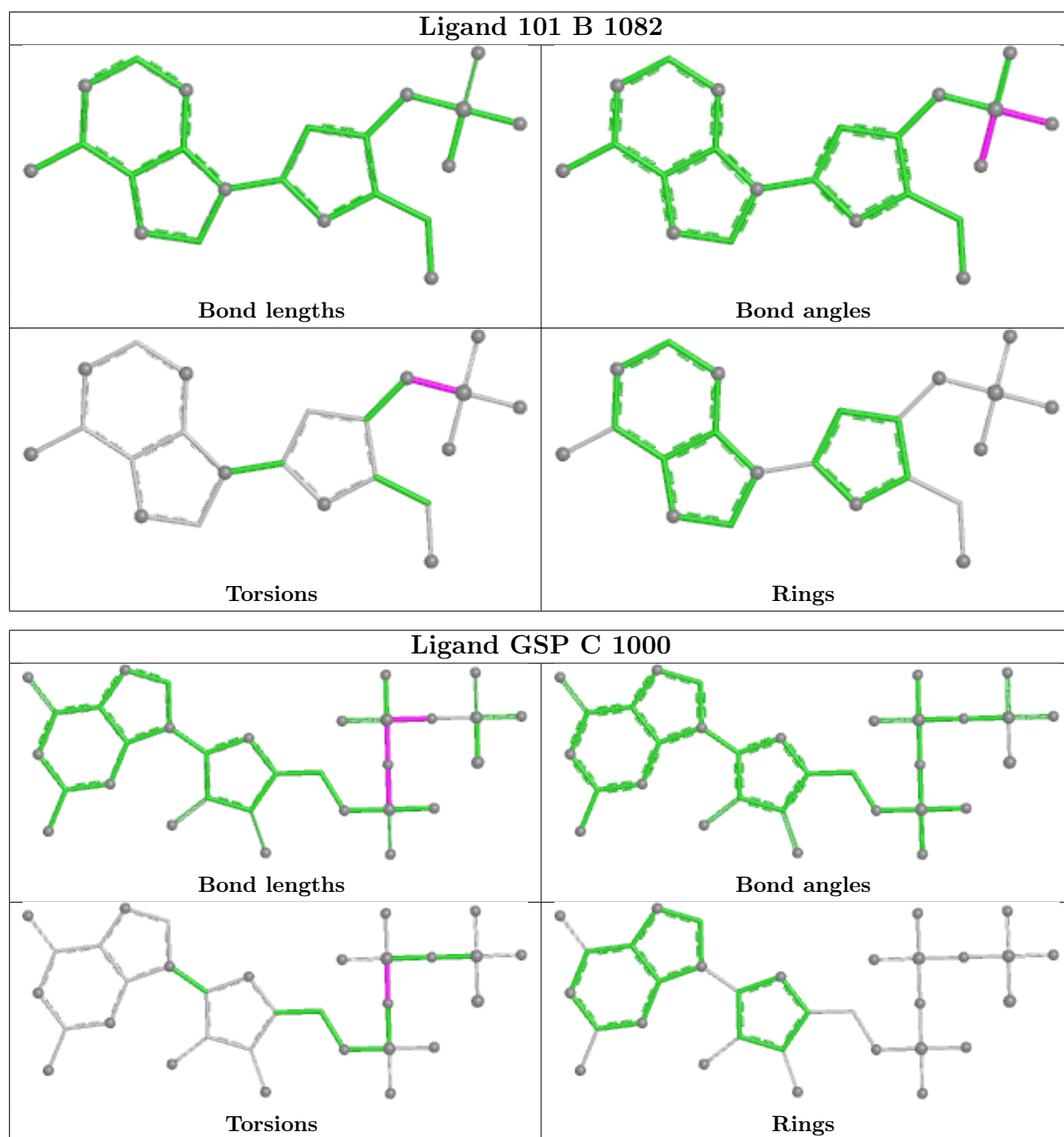
There are no ring outliers.

4 monomers are involved in 12 short contacts:

Mol	Chain	Res	Type	Clashes	Symm-Clashes
5	A	1002	FOK	7	0
6	B	1083	MES	3	0
8	B	1082	101	1	0
6	A	1003	MES	1	0

The following is a two-dimensional graphical depiction of Mogul quality analysis of bond lengths, bond angles, torsion angles, and ring geometry for all instances of the Ligand of Interest. In addition, ligands with molecular weight > 250 and outliers as shown on the validation Tables will also be included. For torsion angles, if less than 5% of the Mogul distribution of torsion angles is within 10 degrees of the torsion angle in question, then that torsion angle is considered an outlier. Any bond that is central to one or more torsion angles identified as an outlier by Mogul will be highlighted in the graph. For rings, the root-mean-square deviation (RMSD) between the ring in question and similar rings identified by Mogul is calculated over all ring torsion angles. If the average RMSD is greater than 60 degrees and the minimal RMSD between the ring in question and any Mogul-identified rings is also greater than 60 degrees, then that ring is considered an outlier. The outliers are highlighted in purple. The color gray indicates Mogul did not find sufficient equivalents in the CSD to analyse the geometry.





5.7 Other polymers [i](#)

There are no such residues in this entry.

5.8 Polymer linkage issues [i](#)

There are no chain breaks in this entry.

6 Fit of model and data [i](#)

6.1 Protein, DNA and RNA chains [i](#)

In the following table, the column labelled ‘#RSRZ> 2’ contains the number (and percentage) of RSRZ outliers, followed by percent RSRZ outliers for the chain as percentile scores relative to all X-ray entries and entries of similar resolution. The OWAB column contains the minimum, median, 95th percentile and maximum values of the occupancy-weighted average B-factor per residue. The column labelled ‘Q< 0.9’ lists the number of (and percentage) of residues with an average occupancy less than 0.9.

Mol	Chain	Analysed	<RSRZ>	#RSRZ>2	OWAB(Å ²)	Q<0.9
1	A	189/225 (84%)	-0.01	0 100 100	32, 58, 82, 97	0
2	B	190/212 (89%)	-0.37	3 (1%) 70 67	27, 42, 75, 97	0
3	C	329/394 (83%)	-0.30	4 (1%) 76 73	27, 47, 75, 98	1 (0%)
All	All	708/831 (85%)	-0.24	7 (0%) 79 76	27, 48, 80, 98	1 (0%)

All (7) RSRZ outliers are listed below:

Mol	Chain	Res	Type	RSRZ
2	B	952	ALA	3.7
2	B	953	ILE	3.6
3	C	39	ALA	3.3
2	B	878	TYR	2.9
3	C	388	LEU	2.8
3	C	386	MET	2.4
3	C	86	GLY	2.2

6.2 Non-standard residues in protein, DNA, RNA chains [i](#)

There are no non-standard protein/DNA/RNA residues in this entry.

6.3 Carbohydrates [i](#)

There are no oligosaccharides in this entry.

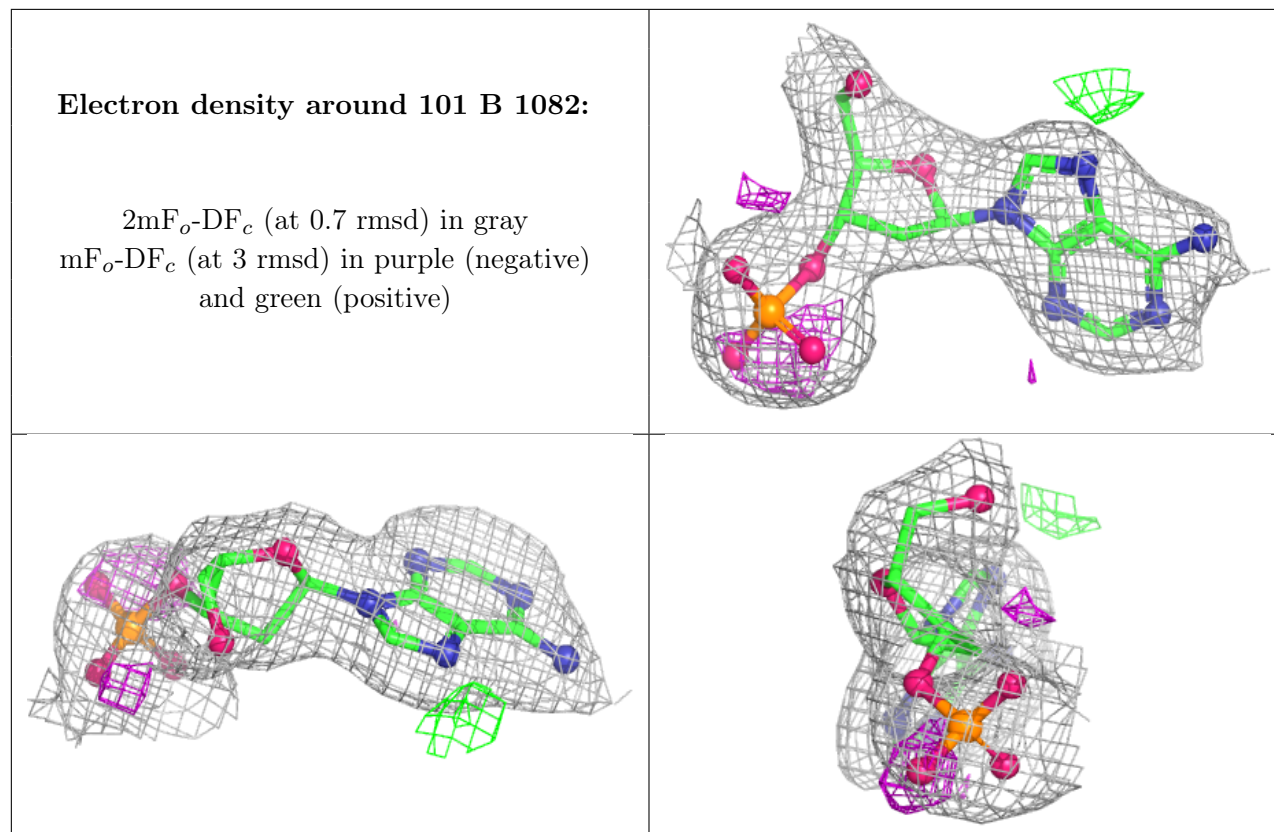
6.4 Ligands [i](#)

In the following table, the Atoms column lists the number of modelled atoms in the group and the number defined in the chemical component dictionary. The B-factors column lists the minimum,

median, 95th percentile and maximum values of B factors of atoms in the group. The column labelled 'Q< 0.9' lists the number of atoms with occupancy less than 0.9.

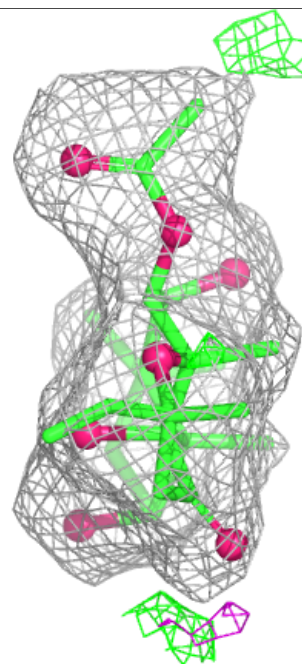
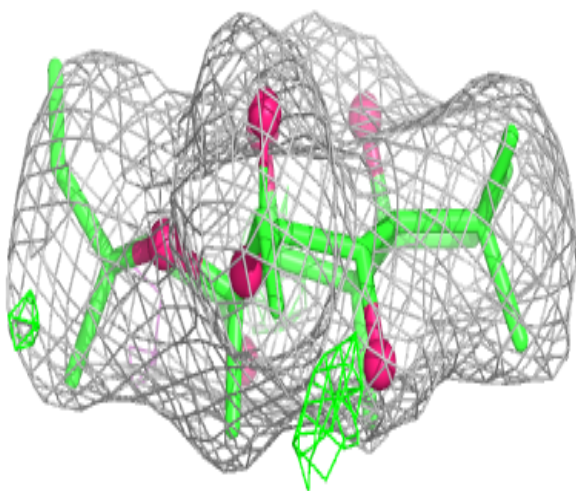
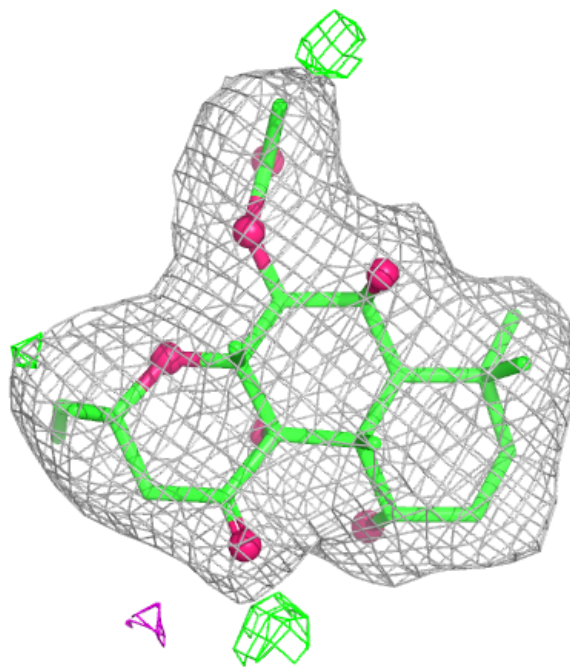
Mol	Type	Chain	Res	Atoms	RSCC	RSR	B-factors(\AA^2)	Q<0.9
6	MES	B	1083	12/12	0.79	0.26	90,93,99,99	4
6	MES	A	1003	12/12	0.89	0.12	72,75,80,81	0
4	MG	A	581	1/1	0.92	0.08	46,46,46,46	0
8	101	B	1082	22/22	0.92	0.08	36,45,57,58	0
5	FOK	A	1002	29/29	0.95	0.08	33,39,46,53	0
7	POP	A	1005	9/9	0.97	0.06	54,55,57,59	0
4	MG	C	396	1/1	0.97	0.09	42,42,42,42	0
10	GSP	C	1000	32/32	0.97	0.06	28,34,49,56	0
9	CL	C	398	1/1	0.99	0.02	39,39,39,39	0

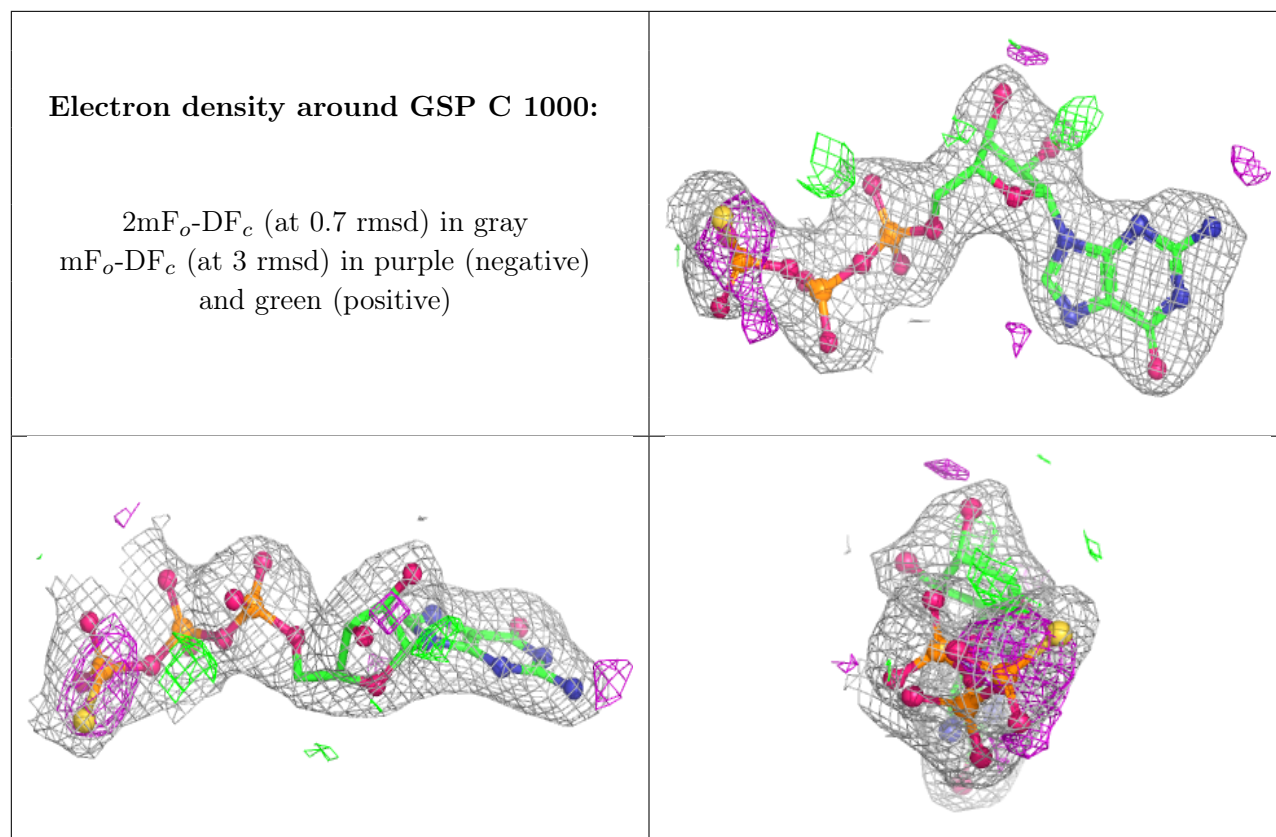
The following is a graphical depiction of the model fit to experimental electron density of all instances of the Ligand of Interest. In addition, ligands with molecular weight > 250 and outliers as shown on the geometry validation Tables will also be included. Each fit is shown from different orientation to approximate a three-dimensional view.



Electron density around FOK A 1002:

$2mF_o-DF_c$ (at 0.7 rmsd) in gray
 mF_o-DF_c (at 3 rmsd) in purple (negative)
and green (positive)





6.5 Other polymers [i](#)

There are no such residues in this entry.