



# Full wwPDB X-ray Structure Validation Report ⓘ

Mar 8, 2026 – 01:03 PM UTC

PDB ID : 5CSU / pdb\_00005csu  
Title : Disproportionating enzyme 1 from Arabidopsis - acarviostatin soak  
Authors : O'Neill, E.C.; Stevenson, C.E.M.; Tantanarat, K.; Latousakis, D.; Donaldson, M.I.; Rejzek, M.; Limpaseni, T.; Smith, A.M.; Field, R.A.; Lawson, D.M.  
Deposited on : 2015-07-23  
Resolution : 2.53 Å (reported)

This is a Full wwPDB X-ray Structure Validation Report for a publicly released PDB entry.

We welcome your comments at [validation@mail.wwpdb.org](mailto:validation@mail.wwpdb.org)

A user guide is available at

<https://www.wwpdb.org/validation/2017/XrayValidationReportHelp>

with specific help available everywhere you see the ⓘ symbol.

The types of validation reports are described at

<http://www.wwpdb.org/validation/2017/FAQs#types>.

---

The following versions of software and data (see [references ⓘ](#)) were used in the production of this report:

MolProbity : 4-5-2 with Phenix2.0  
Mogul : 2022.3.0, CSD as543be (2022)  
Xtriage (Phenix) : 2.0  
EDS : 3.0  
Percentile statistics : 20250101.v01 (using entries in the PDB archive January 1st 2025)  
CCP4 : 9.0.010 (Gargrove)  
Density-Fitness : 1.0.12  
Ideal geometry (proteins) : Engh & Huber (2001)  
Ideal geometry (DNA, RNA) : Parkinson et al. (1996)  
Validation Pipeline (wwPDB-VP) : 2.49

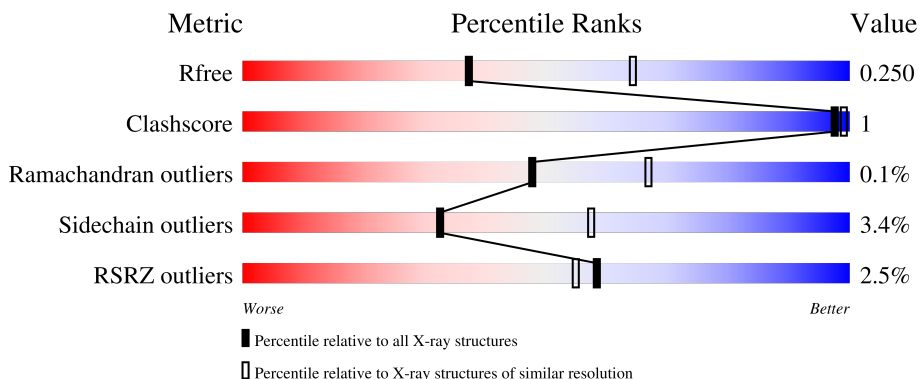
# 1 Overall quality at a glance

The following experimental techniques were used to determine the structure:

*X-RAY DIFFRACTION*

The reported resolution of this entry is 2.53 Å.

Percentile scores (ranging between 0-100) for global validation metrics of the entry are shown in the following graphic. The table shows the number of entries on which the scores are based.



Metric	Whole archive (#Entries)	Similar resolution (#Entries, resolution range(Å))
$R_{free}$	180053	7383 (2.54-2.50)
Clashscore	190562	8079 (2.54-2.50)
Ramachandran outliers	187476	7944 (2.54-2.50)
Sidechain outliers	187428	7946 (2.54-2.50)
RSRZ outliers	180081	7387 (2.54-2.50)

The table below summarises the geometric issues observed across the polymeric chains and their fit to the electron density. The red, orange, yellow and green segments of the lower bar indicate the fraction of residues that contain outliers for  $\geq 3$ , 2, 1 and 0 types of geometric quality criteria respectively. A grey segment represents the fraction of residues that are not modelled. The numeric value for each fraction is indicated below the corresponding segment, with a dot representing fractions  $\leq 5\%$ . The upper red bar (where present) indicates the fraction of residues that have poor fit to the electron density. The numeric value is given above the bar.

Mol	Chain	Length	Quality of chain
1	A	564	 2% 88% 8%
1	B	564	 2% 87% 8%
2	C	2	 100%
2	E	2	 100%
3	D	3	 33% 67%

Continued on next page...

*Continued from previous page...*

Mol	Chain	Length	Quality of chain
3	F	3	 33% 67%

## 2 Entry composition [i](#)

There are 6 unique types of molecules in this entry. The entry contains 8356 atoms, of which 0 are hydrogens and 0 are deuteriums.

In the tables below, the ZeroOcc column contains the number of atoms modelled with zero occupancy, the AltConf column contains the number of residues with at least one atom in alternate conformation and the Trace column contains the number of residues modelled with at most 2 atoms.

- Molecule 1 is a protein called 4-alpha-glucanotransferase DPE1, chloroplastic/amyloplastic.

Mol	Chain	Residues	Atoms					ZeroOcc	AltConf	Trace
			Total	C	N	O	S			
1	A	518	3973	2554	676	731	12	0	0	0
1	B	518	4019	2580	684	743	12	0	0	0

There are 66 discrepancies between the modelled and reference sequences:

Chain	Residue	Modelled	Actual	Comment	Reference
A	13	MET	-	initiating methionine	UNP Q9LV91
A	14	HIS	-	expression tag	UNP Q9LV91
A	15	HIS	-	expression tag	UNP Q9LV91
A	16	HIS	-	expression tag	UNP Q9LV91
A	17	HIS	-	expression tag	UNP Q9LV91
A	18	HIS	-	expression tag	UNP Q9LV91
A	19	HIS	-	expression tag	UNP Q9LV91
A	20	GLY	-	expression tag	UNP Q9LV91
A	21	LYS	-	expression tag	UNP Q9LV91
A	22	PRO	-	expression tag	UNP Q9LV91
A	23	ILE	-	expression tag	UNP Q9LV91
A	24	PRO	-	expression tag	UNP Q9LV91
A	25	ASN	-	expression tag	UNP Q9LV91
A	26	PRO	-	expression tag	UNP Q9LV91
A	27	LEU	-	expression tag	UNP Q9LV91
A	28	LEU	-	expression tag	UNP Q9LV91
A	29	GLY	-	expression tag	UNP Q9LV91
A	30	LEU	-	expression tag	UNP Q9LV91
A	31	ASP	-	expression tag	UNP Q9LV91
A	32	SER	-	expression tag	UNP Q9LV91
A	33	THR	-	expression tag	UNP Q9LV91
A	34	GLU	-	expression tag	UNP Q9LV91
A	35	ASN	-	expression tag	UNP Q9LV91
A	36	LEU	-	expression tag	UNP Q9LV91
A	37	TYR	-	expression tag	UNP Q9LV91

*Continued on next page...*

*Continued from previous page...*

Chain	Residue	Modelled	Actual	Comment	Reference
A	38	PHE	-	expression tag	UNP Q9LV91
A	39	GLN	-	expression tag	UNP Q9LV91
A	40	GLY	-	expression tag	UNP Q9LV91
A	41	ILE	-	expression tag	UNP Q9LV91
A	42	ASP	-	expression tag	UNP Q9LV91
A	43	PRO	-	expression tag	UNP Q9LV91
A	44	PHE	-	expression tag	UNP Q9LV91
A	45	THR	-	expression tag	UNP Q9LV91
B	13	MET	-	initiating methionine	UNP Q9LV91
B	14	HIS	-	expression tag	UNP Q9LV91
B	15	HIS	-	expression tag	UNP Q9LV91
B	16	HIS	-	expression tag	UNP Q9LV91
B	17	HIS	-	expression tag	UNP Q9LV91
B	18	HIS	-	expression tag	UNP Q9LV91
B	19	HIS	-	expression tag	UNP Q9LV91
B	20	GLY	-	expression tag	UNP Q9LV91
B	21	LYS	-	expression tag	UNP Q9LV91
B	22	PRO	-	expression tag	UNP Q9LV91
B	23	ILE	-	expression tag	UNP Q9LV91
B	24	PRO	-	expression tag	UNP Q9LV91
B	25	ASN	-	expression tag	UNP Q9LV91
B	26	PRO	-	expression tag	UNP Q9LV91
B	27	LEU	-	expression tag	UNP Q9LV91
B	28	LEU	-	expression tag	UNP Q9LV91
B	29	GLY	-	expression tag	UNP Q9LV91
B	30	LEU	-	expression tag	UNP Q9LV91
B	31	ASP	-	expression tag	UNP Q9LV91
B	32	SER	-	expression tag	UNP Q9LV91
B	33	THR	-	expression tag	UNP Q9LV91
B	34	GLU	-	expression tag	UNP Q9LV91
B	35	ASN	-	expression tag	UNP Q9LV91
B	36	LEU	-	expression tag	UNP Q9LV91
B	37	TYR	-	expression tag	UNP Q9LV91
B	38	PHE	-	expression tag	UNP Q9LV91
B	39	GLN	-	expression tag	UNP Q9LV91
B	40	GLY	-	expression tag	UNP Q9LV91
B	41	ILE	-	expression tag	UNP Q9LV91
B	42	ASP	-	expression tag	UNP Q9LV91
B	43	PRO	-	expression tag	UNP Q9LV91
B	44	PHE	-	expression tag	UNP Q9LV91
B	45	THR	-	expression tag	UNP Q9LV91

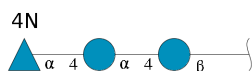
- Molecule 2 is an oligosaccharide called 4-amino-4,6-dideoxy-alpha-D-glucopyranose-(1-4)-al

pha-D-glucopyranose.



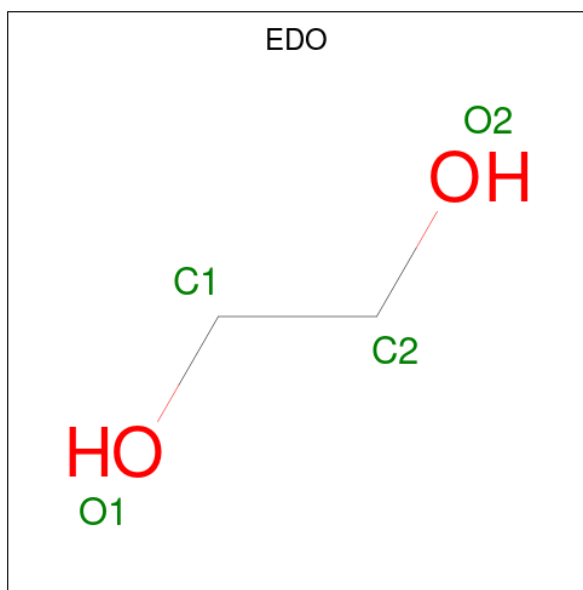
Mol	Chain	Residues	Atoms				ZeroOcc	AltConf	Trace
			Total	C	N	O			
2	C	2	21	12	1	8	0	0	0
2	E	2	21	12	1	8	0	0	0

- Molecule 3 is an oligosaccharide called 4-amino-4,6-dideoxy-alpha-D-glucopyranose-(1-4)-alpha-D-glucopyranose-(1-4)-beta-D-glucopyranose.



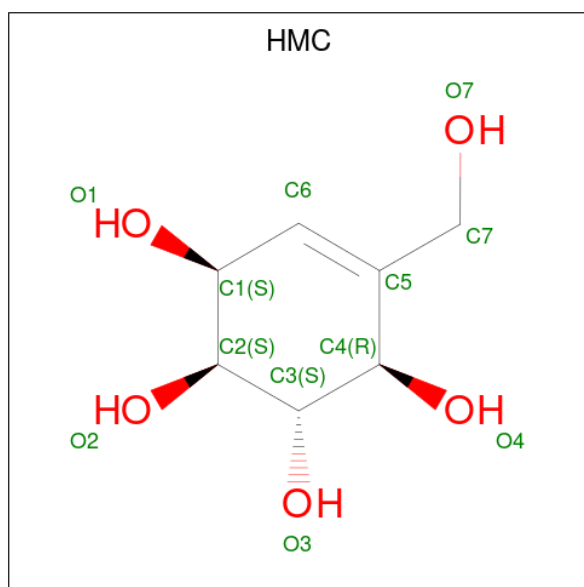
Mol	Chain	Residues	Atoms				ZeroOcc	AltConf	Trace
			Total	C	N	O			
3	D	3	33	18	1	14	0	0	0
3	F	3	33	18	1	14	0	0	0

- Molecule 4 is 1,2-ETHANEDIOL (CCD ID: EDO) (formula: C<sub>2</sub>H<sub>6</sub>O<sub>2</sub>).



Mol	Chain	Residues	Atoms	ZeroOcc	AltConf
4	A	1	Total C O 4 2 2	0	0
4	A	1	Total C O 4 2 2	0	0
4	B	1	Total C O 4 2 2	0	0

- Molecule 5 is 5-HYDROXYMETHYL-CHONDURITOL (CCD ID: HMC) (formula:  $C_7H_{12}O_5$ ).



Mol	Chain	Residues	Atoms	ZeroOcc	AltConf
5	A	1	Total C O 11 7 4	0	0
5	A	1	Total C O 11 7 4	0	0
5	B	1	Total C O 11 7 4	0	0
5	B	1	Total C O 11 7 4	0	0

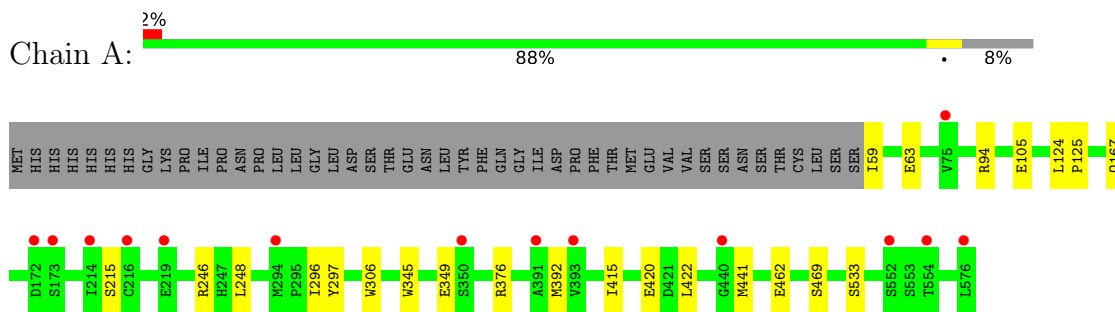
- Molecule 6 is water.

Mol	Chain	Residues	Atoms	ZeroOcc	AltConf
6	A	93	Total O 93 93	0	0
6	B	107	Total O 107 107	0	0

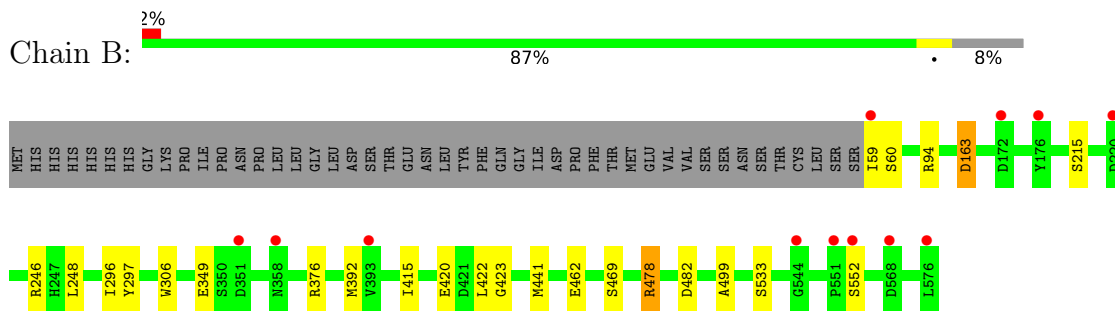
### 3 Residue-property plots [i](#)

These plots are drawn for all protein, RNA, DNA and oligosaccharide chains in the entry. The first graphic for a chain summarises the proportions of the various outlier classes displayed in the second graphic. The second graphic shows the sequence view annotated by issues in geometry and electron density. Residues are color-coded according to the number of geometric quality criteria for which they contain at least one outlier: green = 0, yellow = 1, orange = 2 and red = 3 or more. A red dot above a residue indicates a poor fit to the electron density ( $RSRZ > 2$ ). Stretches of 2 or more consecutive residues without any outlier are shown as a green connector. Residues present in the sample, but not in the model, are shown in grey.

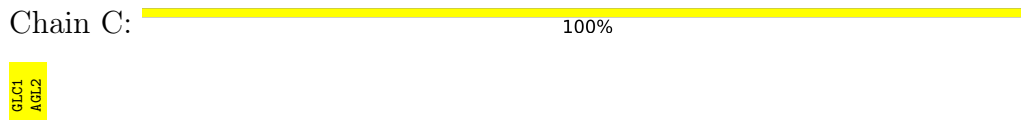
- Molecule 1: 4-alpha-glucanotransferase DPE1, chloroplastic/amyloplastic



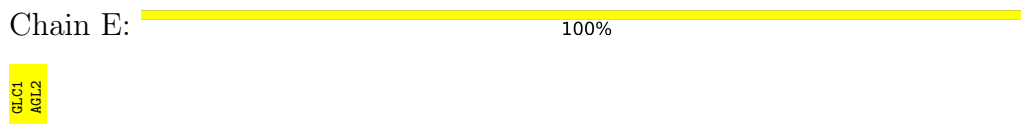
- Molecule 1: 4-alpha-glucanotransferase DPE1, chloroplastic/amyloplastic




- Molecule 2: 4-amino-4,6-dideoxy-alpha-D-glucopyranose-(1-4)-alpha-D-glucopyranose



- Molecule 2: 4-amino-4,6-dideoxy-alpha-D-glucopyranose-(1-4)-alpha-D-glucopyranose




- Molecule 3: 4-amino-4,6-dideoxy-alpha-D-glucopyranose-(1-4)-alpha-D-glucopyranose-(1-4)-beta-D-glucopyranose

Chain D:  33% 67%

GLC1  
GLC2  
AGL3

- Molecule 3: 4-amino-4,6-dideoxy-alpha-D-glucopyranose-(1-4)-alpha-D-glucopyranose-(1-4)-beta-D-glucopyranose

Chain F:  33% 67%

GLC1  
GLC2  
AGL3

## 4 Data and refinement statistics

Property	Value	Source
Space group	P 1	Depositor
Cell constants a, b, c, $\alpha$ , $\beta$ , $\gamma$	70.83Å 74.13Å 79.73Å 64.59° 69.76° 66.57°	Depositor
Resolution (Å)	40.95 – 2.53 40.95 – 2.53	Depositor EDS
% Data completeness (in resolution range)	95.7 (40.95-2.53) 95.7 (40.95-2.53)	Depositor EDS
$R_{merge}$	0.12	Depositor
$R_{sym}$	(Not available)	Depositor
$\langle I/\sigma(I) \rangle$ <sup>1</sup>	2.05 (at 2.54Å)	Xtrriage
Refinement program	REFMAC 5.8.0124	Depositor
R, $R_{free}$	0.207 , 0.249 0.211 , 0.250	Depositor DCC
$R_{free}$ test set	2185 reflections (4.98%)	wwPDB-VP
Wilson B-factor (Å <sup>2</sup> )	41.2	Xtrriage
Anisotropy	0.416	Xtrriage
Bulk solvent $k_{sol}$ (e/Å <sup>3</sup> ), $B_{sol}$ (Å <sup>2</sup> )	0.35 , 38.6	EDS
L-test for twinning <sup>2</sup>	$\langle  L  \rangle = 0.50$ , $\langle L^2 \rangle = 0.33$	Xtrriage
Estimated twinning fraction	No twinning to report.	Xtrriage
$F_o, F_c$ correlation	0.93	EDS
Total number of atoms	8356	wwPDB-VP
Average B, all atoms (Å <sup>2</sup> )	43.0	wwPDB-VP

Xtrriage's analysis on translational NCS is as follows: *The largest off-origin peak in the Patterson function is 17.60% of the height of the origin peak. No significant pseudotranslation is detected.*

<sup>1</sup>Intensities estimated from amplitudes.

<sup>2</sup>Theoretical values of  $\langle |L| \rangle$ ,  $\langle L^2 \rangle$  for acentric reflections are 0.5, 0.333 respectively for untwinned datasets, and 0.375, 0.2 for perfectly twinned datasets.

## 5 Model quality [i](#)

### 5.1 Standard geometry [i](#)

Bond lengths and bond angles in the following residue types are not validated in this section: BGC, HMC, GLC, EDO, AGL

The Z score for a bond length (or angle) is the number of standard deviations the observed value is removed from the expected value. A bond length (or angle) with  $|Z| > 5$  is considered an outlier worth inspection. RMSZ is the root-mean-square of all Z scores of the bond lengths (or angles).

Mol	Chain	Bond lengths		Bond angles	
		RMSZ	# Z  >5	RMSZ	# Z  >5
1	A	0.75	0/4086	0.93	1/5576 (0.0%)
1	B	0.76	0/4133	0.93	1/5631 (0.0%)
All	All	0.75	0/8219	0.93	2/11207 (0.0%)

There are no bond length outliers.

All (2) bond angle outliers are listed below:

Mol	Chain	Res	Type	Atoms	Z	Observed(°)	Ideal(°)
1	A	469	SER	N-CA-C	-6.15	104.20	111.03
1	B	469	SER	N-CA-C	-5.64	104.77	111.03

There are no chirality outliers.

There are no planarity outliers.

### 5.2 Too-close contacts [i](#)

In the following table, the Non-H and H(model) columns list the number of non-hydrogen atoms and hydrogen atoms in the chain respectively. The H(added) column lists the number of hydrogen atoms added and optimized by MolProbity. The Clashes column lists the number of clashes within the asymmetric unit, whereas Symm-Clashes lists symmetry-related clashes.

Mol	Chain	Non-H	H(model)	H(added)	Clashes	Symm-Clashes
1	A	3973	0	3733	6	0
1	B	4019	0	3810	6	0
2	C	21	0	18	0	0
2	E	21	0	18	0	0
3	D	33	0	29	0	0
3	F	33	0	29	1	0
4	A	8	0	12	0	0

*Continued on next page...*

Continued from previous page...

Mol	Chain	Non-H	H(model)	H(added)	Clashes	Symm-Clashes
4	B	4	0	6	0	0
5	A	22	0	19	0	0
5	B	22	0	19	0	0
6	A	93	0	0	0	0
6	B	107	0	0	0	0
All	All	8356	0	7693	12	0

The all-atom clashscore is defined as the number of clashes found per 1000 atoms (including hydrogen atoms). The all-atom clashscore for this structure is 1.

All (12) close contacts within the same asymmetric unit are listed below, sorted by their clash magnitude.

Atom-1	Atom-2	Interatomic distance (Å)	Clash overlap (Å)
1:A:345:TRP:O	1:A:349:GLU:HG3	2.09	0.52
1:A:59:ILE:HG22	1:A:63:GLU:HB2	1.92	0.51
1:B:163:ASP:OD1	1:B:163:ASP:N	2.45	0.48
1:B:422:LEU:HD11	1:B:441:MET:HE2	1.96	0.47
1:A:422:LEU:HD11	1:A:441:MET:HE2	1.96	0.47
1:B:246:ARG:HG2	1:B:306:TRP:CZ2	2.52	0.45
1:B:478:ARG:HH11	1:B:478:ARG:CG	2.29	0.45
1:A:246:ARG:HG2	1:A:306:TRP:CZ2	2.52	0.44
1:A:296:ILE:HG23	1:A:297:TYR:CD2	2.54	0.43
1:B:296:ILE:HG23	1:B:297:TYR:CD2	2.55	0.42
1:A:124:LEU:HB3	1:A:125:PRO:HD2	2.02	0.41
1:B:423:GLY:HA2	3:F:2:GLC:H3	2.02	0.40

There are no symmetry-related clashes.

## 5.3 Torsion angles

### 5.3.1 Protein backbone

In the following table, the Percentiles column shows the percent Ramachandran outliers of the chain as a percentile score with respect to all X-ray entries followed by that with respect to entries of similar resolution.

The Analysed column shows the number of residues for which the backbone conformation was analysed, and the total number of residues.

Mol	Chain	Analysed	Favoured	Allowed	Outliers	Percentiles	
1	A	516/564 (92%)	505 (98%)	11 (2%)	0	100	100
1	B	516/564 (92%)	504 (98%)	11 (2%)	1 (0%)	43	62
All	All	1032/1128 (92%)	1009 (98%)	22 (2%)	1 (0%)	48	67

All (1) Ramachandran outliers are listed below:

Mol	Chain	Res	Type
1	B	499	ALA

### 5.3.2 Protein sidechains [i](#)

In the following table, the Percentiles column shows the percent sidechain outliers of the chain as a percentile score with respect to all X-ray entries followed by that with respect to entries of similar resolution.

The Analysed column shows the number of residues for which the sidechain conformation was analysed, and the total number of residues.

Mol	Chain	Analysed	Rotameric	Outliers	Percentiles	
1	A	394/480 (82%)	383 (97%)	11 (3%)	38	64
1	B	406/480 (85%)	390 (96%)	16 (4%)	28	52
All	All	800/960 (83%)	773 (97%)	27 (3%)	32	57

All (27) residues with a non-rotameric sidechain are listed below:

Mol	Chain	Res	Type
1	A	94	ARG
1	A	105	GLU
1	A	167	GLN
1	A	215	SER
1	A	248	LEU
1	A	376	ARG
1	A	392	MET
1	A	415	ILE
1	A	420	GLU
1	A	462	GLU
1	A	533	SER
1	B	59	ILE
1	B	60	SER
1	B	94	ARG
1	B	163	ASP

*Continued on next page...*

*Continued from previous page...*

Mol	Chain	Res	Type
1	B	215	SER
1	B	248	LEU
1	B	349	GLU
1	B	376	ARG
1	B	392	MET
1	B	415	ILE
1	B	420	GLU
1	B	462	GLU
1	B	478	ARG
1	B	482	ASP
1	B	533	SER
1	B	552	SER

Sometimes sidechains can be flipped to improve hydrogen bonding and reduce clashes. All (3) such sidechains are listed below:

Mol	Chain	Res	Type
1	A	167	GLN
1	A	247	HIS
1	B	510	GLN

### 5.3.3 RNA [i](#)

There are no RNA molecules in this entry.

### 5.4 Non-standard residues in protein, DNA, RNA chains [i](#)

There are no non-standard protein/DNA/RNA residues in this entry.

### 5.5 Carbohydrates [i](#)

10 monosaccharides are modelled in this entry.

In the following table, the Counts columns list the number of bonds (or angles) for which Mogul statistics could be retrieved, the number of bonds (or angles) that are observed in the model and the number of bonds (or angles) that are defined in the Chemical Component Dictionary. The Link column lists molecule types, if any, to which the group is linked. The Z score for a bond length (or angle) is the number of standard deviations the observed value is removed from the expected value. A bond length (or angle) with  $|Z| > 2$  is considered an outlier worth inspection. RMSZ is the root-mean-square of all Z scores of the bond lengths (or angles).

Mol	Type	Chain	Res	Link	Bond lengths			Bond angles		
					Counts	RMSZ	# Z  > 2	Counts	RMSZ	# Z  > 2
2	GLC	C	1	5,2	11,11,12	0.35	0	15,15,17	1.09	1 (6%)
2	AGL	C	2	5,2	10,10,11	0.53	0	12,14,16	0.99	1 (8%)
3	BGC	D	1	3	12,12,12	0.28	0	17,17,17	0.47	0
3	GLC	D	2	3	11,11,12	0.42	0	15,15,17	0.79	1 (6%)
3	AGL	D	3	5,3	10,10,11	0.52	0	12,14,16	2.00	3 (25%)
2	GLC	E	1	5,2	11,11,12	0.36	0	15,15,17	0.99	1 (6%)
2	AGL	E	2	5,2	10,10,11	0.60	0	12,14,16	0.97	1 (8%)
3	BGC	F	1	3	12,12,12	0.30	0	17,17,17	0.59	0
3	GLC	F	2	3	11,11,12	0.43	0	15,15,17	0.73	0
3	AGL	F	3	5,3	10,10,11	0.61	0	12,14,16	1.98	3 (25%)

In the following table, the Chirals column lists the number of chiral outliers, the number of chiral centers analysed, the number of these observed in the model and the number defined in the Chemical Component Dictionary. Similar counts are reported in the Torsion and Rings columns. <sup>1,2</sup> means no outliers of that kind were identified.

Mol	Type	Chain	Res	Link	Chirals	Torsions	Rings
2	GLC	C	1	5,2	-	2/2/19/22	0/1/1/1
2	AGL	C	2	5,2	-	-	0/1/1/1
3	BGC	D	1	3	-	0/2/22/22	0/1/1/1
3	GLC	D	2	3	-	0/2/19/22	0/1/1/1
3	AGL	D	3	5,3	-	-	0/1/1/1
2	GLC	E	1	5,2	-	0/2/19/22	0/1/1/1
2	AGL	E	2	5,2	-	-	0/1/1/1
3	BGC	F	1	3	-	0/2/22/22	0/1/1/1
3	GLC	F	2	3	-	0/2/19/22	0/1/1/1
3	AGL	F	3	5,3	-	-	0/1/1/1

There are no bond length outliers.

All (11) bond angle outliers are listed below:

Mol	Chain	Res	Type	Atoms	Z	Observed(°)	Ideal(°)
3	D	3	AGL	C3-C4-N4	4.62	120.51	111.05
3	F	3	AGL	C3-C4-N4	4.42	120.10	111.05
3	F	3	AGL	C3-C4-C5	-3.93	102.50	110.67
3	D	3	AGL	C3-C4-C5	-3.62	103.13	110.67
2	C	1	GLC	C1-O5-C5	3.36	116.69	112.19
3	D	3	AGL	C5-C4-N4	-2.99	104.73	110.92
3	F	3	AGL	C5-C4-N4	-2.80	105.11	110.92
2	E	2	AGL	C3-C4-C5	-2.43	105.61	110.67

*Continued on next page...*

*Continued from previous page...*

Mol	Chain	Res	Type	Atoms	Z	Observed(°)	Ideal(°)
3	D	2	GLC	C1-O5-C5	2.40	115.41	112.19
2	E	1	GLC	C1-O5-C5	2.40	115.40	112.19
2	C	2	AGL	C3-C4-C5	-2.01	106.49	110.67

There are no chirality outliers.

All (2) torsion outliers are listed below:

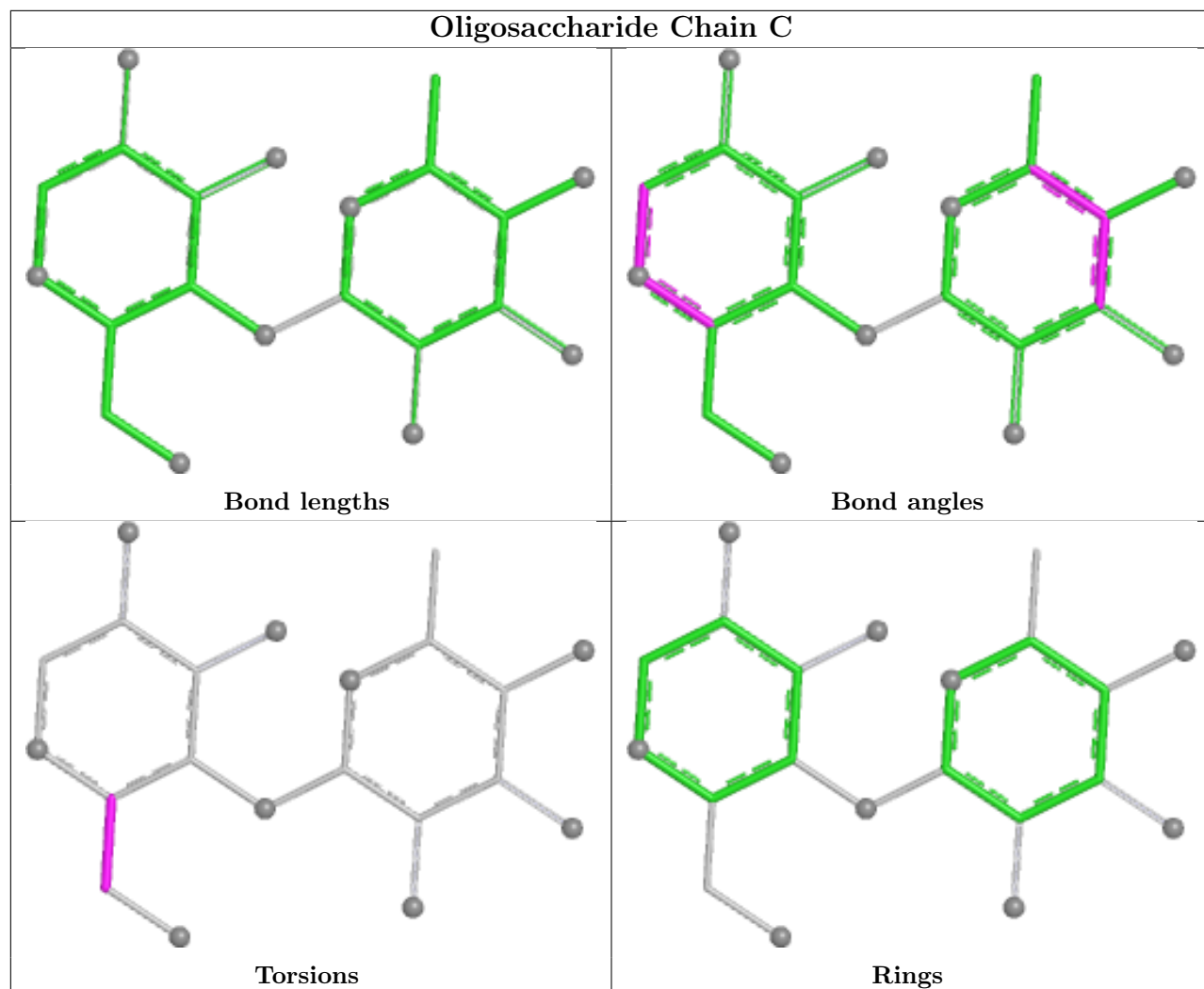
Mol	Chain	Res	Type	Atoms
2	C	1	GLC	C4-C5-C6-O6
2	C	1	GLC	O5-C5-C6-O6

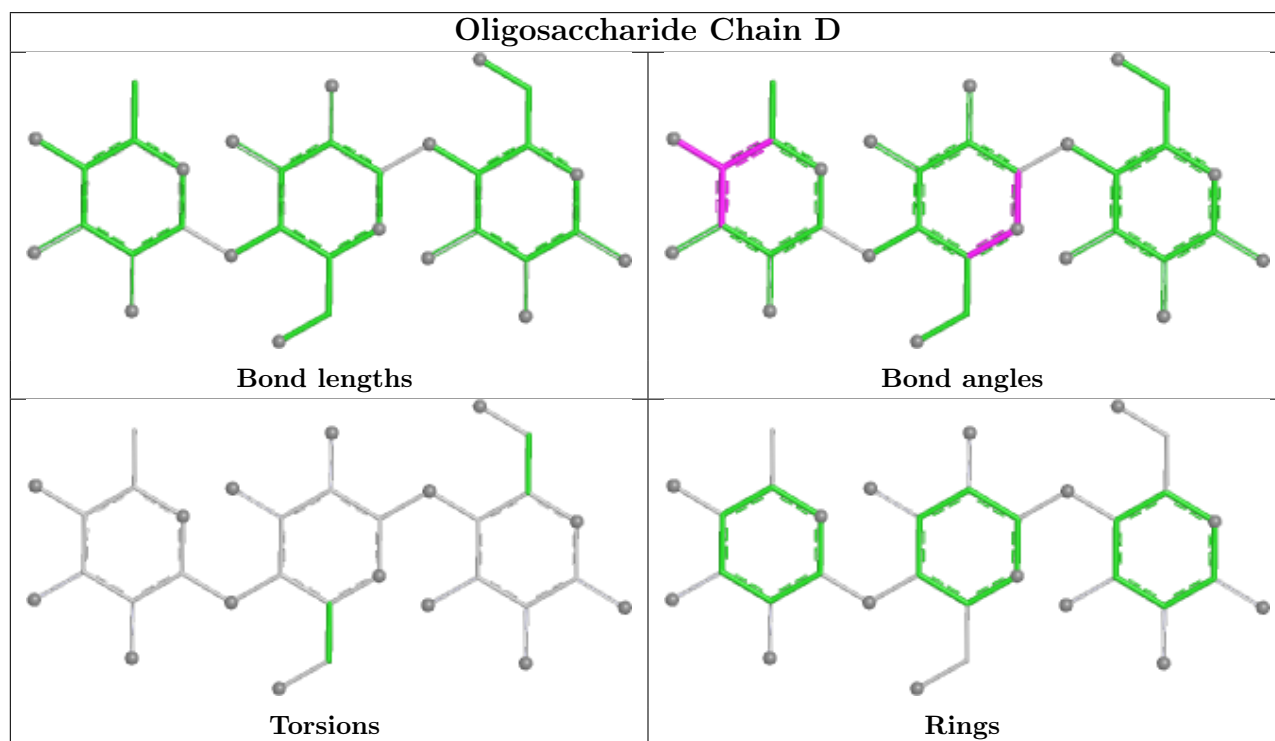
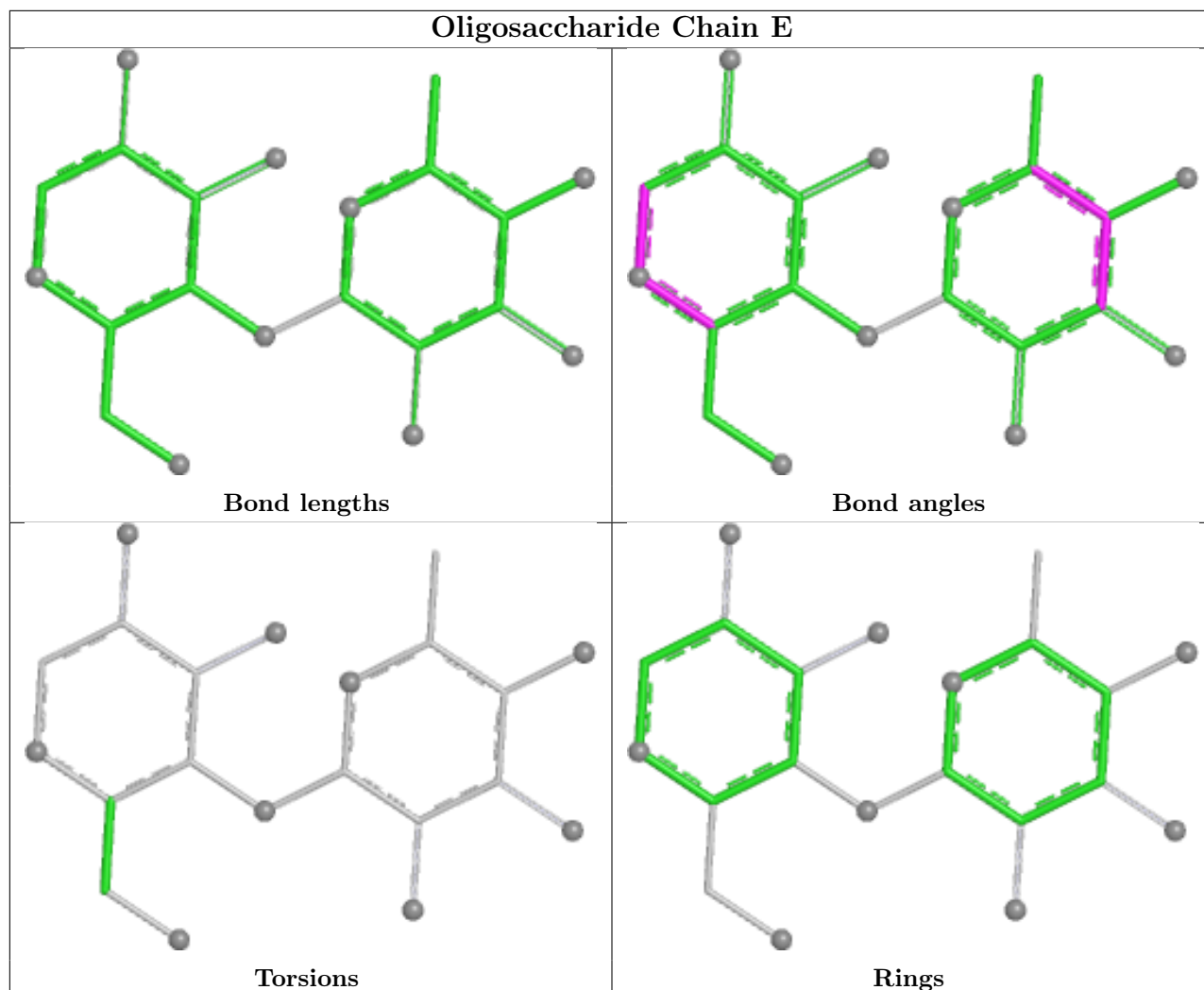
There are no ring outliers.

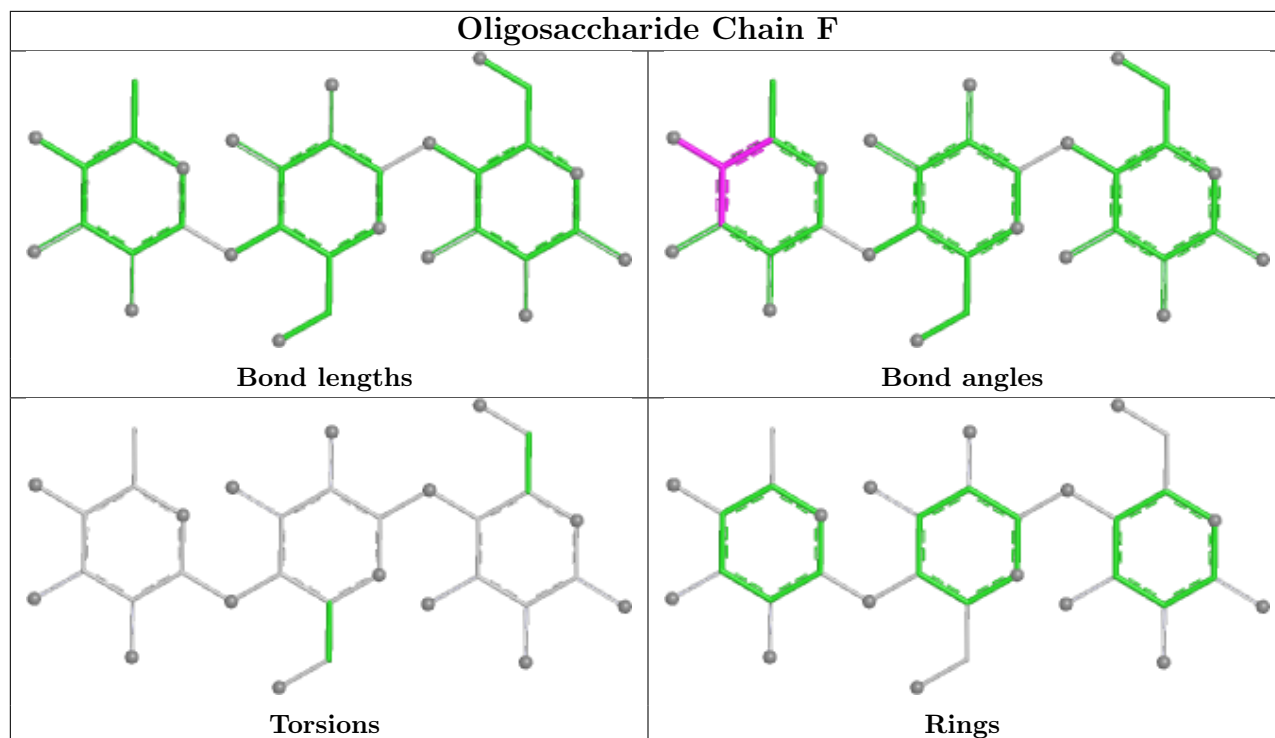
1 monomer is involved in 1 short contact:

Mol	Chain	Res	Type	Clashes	Symm-Clashes
3	F	2	GLC	1	0

The following is a two-dimensional graphical depiction of Mogul quality analysis of bond lengths, bond angles, torsion angles, and ring geometry for oligosaccharide.







## 5.6 Ligand geometry [i](#)

7 ligands are modelled in this entry.

In the following table, the Counts columns list the number of bonds (or angles) for which Mogul statistics could be retrieved, the number of bonds (or angles) that are observed in the model and the number of bonds (or angles) that are defined in the Chemical Component Dictionary. The Link column lists molecule types, if any, to which the group is linked. The Z score for a bond length (or angle) is the number of standard deviations the observed value is removed from the expected value. A bond length (or angle) with  $|Z| > 2$  is considered an outlier worth inspection. RMSZ is the root-mean-square of all Z scores of the bond lengths (or angles).

Mol	Type	Chain	Res	Link	Bond lengths			Bond angles		
					Counts	RMSZ	# $ Z  > 2$	Counts	RMSZ	# $ Z  > 2$
5	HMC	B	605	3,2	11,11,12	1.34	2 (18%)	10,15,17	0.88	0
5	HMC	A	606	3,2	11,11,12	1.74	2 (18%)	10,15,17	0.65	0
4	EDO	B	601	-	3,3,3	0.44	0	2,2,2	0.31	0
5	HMC	A	603	2	11,11,12	0.63	0	10,15,17	0.94	1 (10%)
4	EDO	A	601	-	3,3,3	0.51	0	2,2,2	0.11	0
4	EDO	A	602	-	3,3,3	0.40	0	2,2,2	0.09	0
5	HMC	B	602	2	11,11,12	0.66	0	10,15,17	1.06	1 (10%)

In the following table, the Chirals column lists the number of chiral outliers, the number of chiral centers analysed, the number of these observed in the model and the number defined in the Chemical Component Dictionary. Similar counts are reported in the Torsion and Rings columns.

'-' means no outliers of that kind were identified.

Mol	Type	Chain	Res	Link	Chirals	Torsions	Rings
5	HMC	B	605	3,2	-	2/2/19/22	0/1/1/1
5	HMC	A	606	3,2	-	2/2/19/22	0/1/1/1
4	EDO	B	601	-	-	1/1/1/1	-
5	HMC	A	603	2	-	2/2/19/22	0/1/1/1
4	EDO	A	601	-	-	0/1/1/1	-
4	EDO	A	602	-	-	0/1/1/1	-
5	HMC	B	602	2	-	2/2/19/22	0/1/1/1

All (4) bond length outliers are listed below:

Mol	Chain	Res	Type	Atoms	Z	Observed(Å)	Ideal(Å)
5	A	606	HMC	C4-C5	4.56	1.55	1.51
5	B	605	HMC	C4-C5	3.05	1.53	1.51
5	B	605	HMC	C1-C6	2.54	1.55	1.50
5	A	606	HMC	C1-C6	2.53	1.55	1.50

All (2) bond angle outliers are listed below:

Mol	Chain	Res	Type	Atoms	Z	Observed(°)	Ideal(°)
5	B	602	HMC	C3-C4-C5	2.43	115.49	111.67
5	A	603	HMC	C1-C6-C5	-2.32	117.83	123.11

There are no chirality outliers.

All (9) torsion outliers are listed below:

Mol	Chain	Res	Type	Atoms
5	A	603	HMC	C4-C5-C7-O7
5	A	603	HMC	C6-C5-C7-O7
5	A	606	HMC	C6-C5-C7-O7
5	B	602	HMC	C4-C5-C7-O7
5	B	605	HMC	C4-C5-C7-O7
5	B	605	HMC	C6-C5-C7-O7
5	B	602	HMC	C6-C5-C7-O7
4	B	601	EDO	O1-C1-C2-O2
5	A	606	HMC	C4-C5-C7-O7

There are no ring outliers.

No monomer is involved in short contacts.

## 5.7 Other polymers [i](#)

There are no such residues in this entry.

## 5.8 Polymer linkage issues [i](#)

There are no chain breaks in this entry.

## 6 Fit of model and data

### 6.1 Protein, DNA and RNA chains

In the following table, the column labelled ‘#RSRZ > 2’ contains the number (and percentage) of RSRZ outliers, followed by percent RSRZ outliers for the chain as percentile scores relative to all X-ray entries and entries of similar resolution. The OWAB column contains the minimum, median, 95<sup>th</sup> percentile and maximum values of the occupancy-weighted average B-factor per residue. The column labelled ‘Q < 0.9’ lists the number of (and percentage) of residues with an average occupancy less than 0.9.

Mol	Chain	Analysed	<RSRZ>	#RSRZ>2	OWAB(Å <sup>2</sup> )	Q<0.9
1	A	518/564 (91%)	0.34	14 (2%) 56 52	26, 43, 65, 81	0
1	B	518/564 (91%)	0.32	12 (2%) 61 57	25, 43, 63, 75	0
All	All	1036/1128 (91%)	0.33	26 (2%) 58 55	25, 43, 63, 81	0

All (26) RSRZ outliers are listed below:

Mol	Chain	Res	Type	RSRZ
1	B	544	GLY	3.8
1	A	75	VAL	3.5
1	A	440	GLY	3.4
1	A	552	SER	2.7
1	B	176	TYR	2.7
1	A	576	LEU	2.7
1	A	214	ILE	2.6
1	B	552	SER	2.6
1	A	391	ALA	2.6
1	A	216	CYS	2.6
1	A	554	THR	2.6
1	A	219	GLU	2.5
1	B	568	ASP	2.5
1	A	393	VAL	2.5
1	B	393	VAL	2.4
1	B	576	LEU	2.4
1	B	172	ASP	2.3
1	B	220	ASP	2.3
1	B	358	ASN	2.3
1	A	294	MET	2.3
1	B	351	ASP	2.2
1	B	59	ILE	2.1
1	A	350	SER	2.1
1	A	172	ASP	2.1

*Continued on next page...*

*Continued from previous page...*

Mol	Chain	Res	Type	RSRZ
1	A	173	SER	2.1
1	B	551	PRO	2.1

## 6.2 Non-standard residues in protein, DNA, RNA chains [i](#)

There are no non-standard protein/DNA/RNA residues in this entry.

## 6.3 Carbohydrates [i](#)

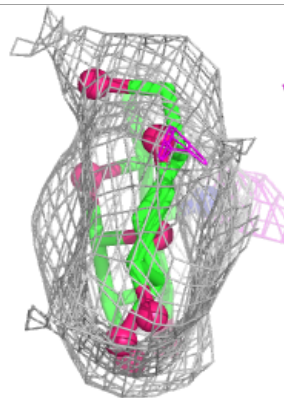
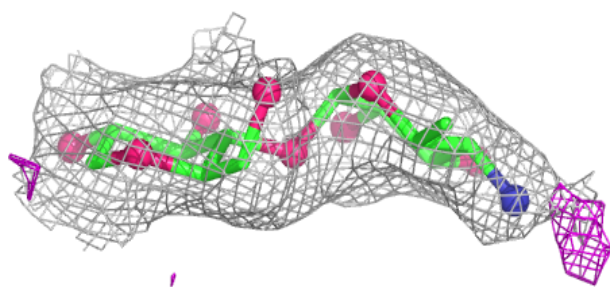
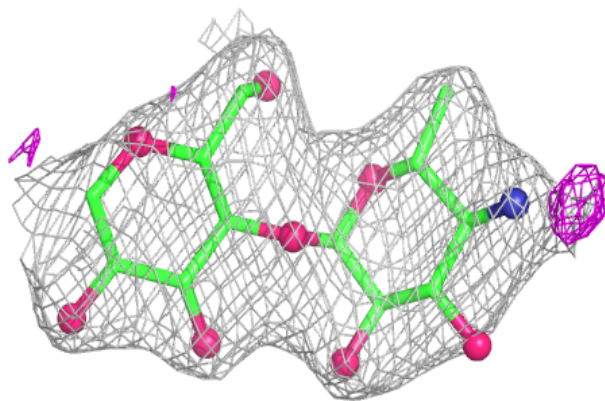
In the following table, the Atoms column lists the number of modelled atoms in the group and the number defined in the chemical component dictionary. The B-factors column lists the minimum, median, 95<sup>th</sup> percentile and maximum values of B factors of atoms in the group. The column labelled 'Q < 0.9' lists the number of atoms with occupancy less than 0.9.

Mol	Type	Chain	Res	Atoms	RSCC	RSR	B-factors(Å <sup>2</sup> )	Q<0.9
3	AGL	F	3	10/11	0.81	0.14	37,38,40,45	0
3	BGC	F	1	12/12	0.87	0.10	40,44,47,49	0
3	AGL	D	3	10/11	0.87	0.12	31,33,36,41	0
3	BGC	D	1	12/12	0.90	0.09	42,45,52,53	0
2	GLC	C	1	11/12	0.90	0.10	42,46,48,49	0
2	GLC	E	1	11/12	0.91	0.09	40,42,43,43	0
2	AGL	E	2	10/11	0.91	0.10	47,53,57,65	0
3	GLC	D	2	11/12	0.92	0.07	34,37,39,40	0
2	AGL	C	2	10/11	0.92	0.08	48,50,56,61	0
3	GLC	F	2	11/12	0.94	0.07	38,39,40,43	0

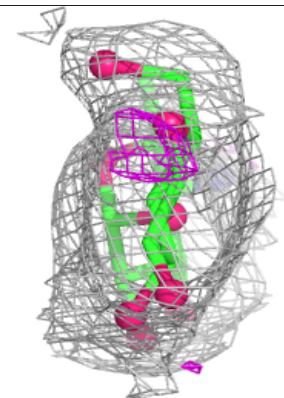
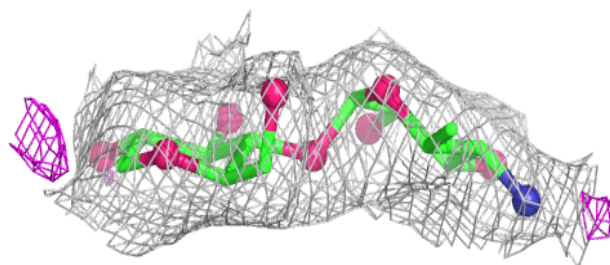
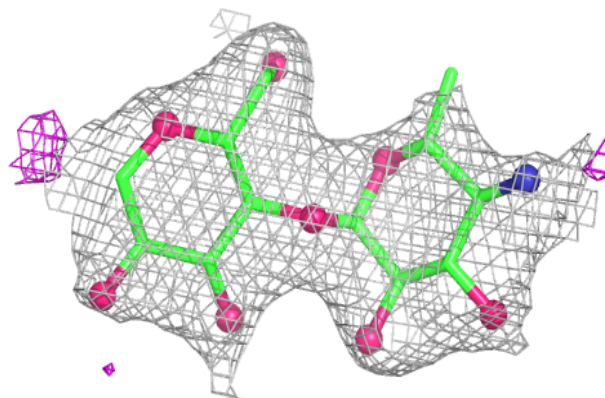
The following is a graphical depiction of the model fit to experimental electron density for oligosaccharide. Each fit is shown from different orientation to approximate a three-dimensional view.

**Electron density around Chain C:**

$2mF_o-DF_c$  (at 0.7 rmsd) in gray  
 $mF_o-DF_c$  (at 3 rmsd) in purple (negative)  
and green (positive)

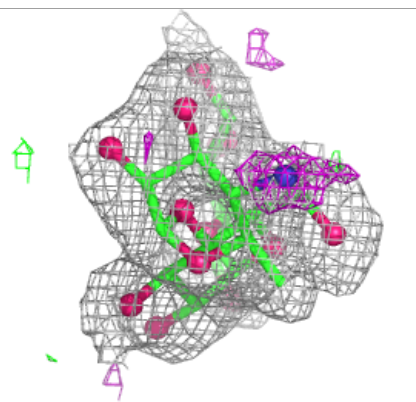
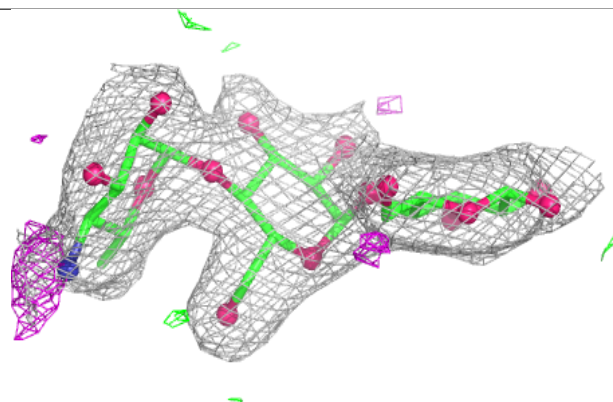
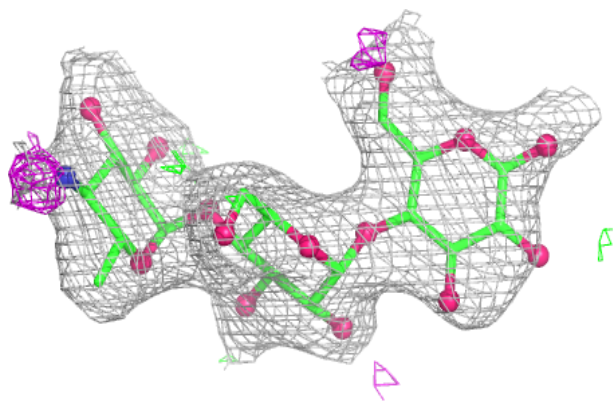
**Electron density around Chain E:**

$2mF_o-DF_c$  (at 0.7 rmsd) in gray  
 $mF_o-DF_c$  (at 3 rmsd) in purple (negative)  
and green (positive)

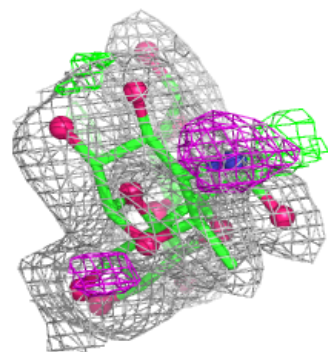
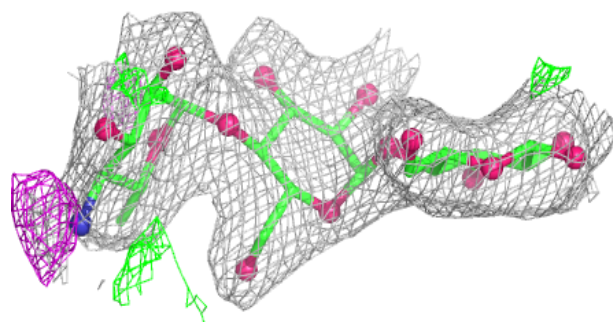
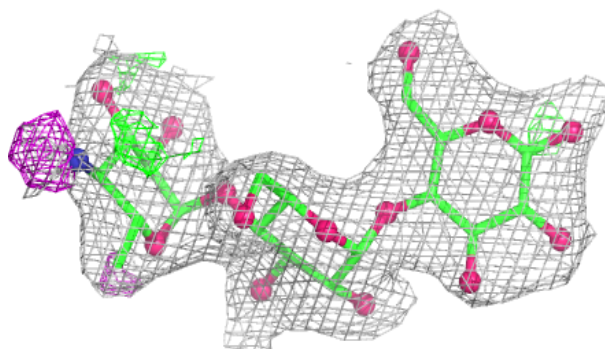


**Electron density around Chain D:**

$2mF_o-DF_c$  (at 0.7 rmsd) in gray  
 $mF_o-DF_c$  (at 3 rmsd) in purple (negative)  
and green (positive)

**Electron density around Chain F:**

$2mF_o-DF_c$  (at 0.7 rmsd) in gray  
 $mF_o-DF_c$  (at 3 rmsd) in purple (negative)  
and green (positive)



## 6.4 Ligands [i](#)

In the following table, the Atoms column lists the number of modelled atoms in the group and the number defined in the chemical component dictionary. The B-factors column lists the minimum, median, 95<sup>th</sup> percentile and maximum values of B factors of atoms in the group. The column labelled 'Q< 0.9' lists the number of atoms with occupancy less than 0.9.

Mol	Type	Chain	Res	Atoms	RSCC	RSR	B-factors(Å <sup>2</sup> )	Q<0.9
5	HMC	B	602	11/12	0.75	0.14	74,77,80,82	0
5	HMC	A	603	11/12	0.76	0.15	69,72,74,77	0
5	HMC	A	606	11/12	0.82	0.17	43,45,47,48	0
4	EDO	A	602	4/4	0.83	0.15	63,64,64,65	0
5	HMC	B	605	11/12	0.84	0.15	45,47,50,51	0
4	EDO	A	601	4/4	0.87	0.18	60,62,63,65	0
4	EDO	B	601	4/4	0.89	0.15	56,57,57,57	0

## 6.5 Other polymers [i](#)

There are no such residues in this entry.