



Full wwPDB X-ray Structure Validation Report ⓘ

Mar 9, 2026 – 08:11 AM UTC

PDB ID : 7CS0 / pdb_00007cs0
Title : Aminoglycoside 2'-N-acetyltransferase from Mycolicibacterium smegmatis-Complex with Coenzyme A and Paromomycin
Authors : Jeong, C.S.; Hwang, J.; Do, H.; Lee, J.H.
Deposited on : 2020-08-14
Resolution : 2.05 Å(reported)

This is a Full wwPDB X-ray Structure Validation Report for a publicly released PDB entry.

We welcome your comments at validation@mail.wwpdb.org

A user guide is available at

<https://www.wwpdb.org/validation/2017/XrayValidationReportHelp>

with specific help available everywhere you see the ⓘ symbol.

The types of validation reports are described at

<http://www.wwpdb.org/validation/2017/FAQs#types>.

The following versions of software and data (see [references ⓘ](#)) were used in the production of this report:

MolProbity : 4-5-2 with Phenix2.0
Mogul : 2022.3.0, CSD as543be (2022)
Xtrriage (Phenix) : 2.0
EDS : 3.0
Buster-report : wwPDB partial adaption of 1.1.7 (2018)
Percentile statistics : 20250101.v01 (using entries in the PDB archive January 1st 2025)
CCP4 : 9.0.010 (Gargrove)
Density-Fitness : 1.0.12
Ideal geometry (proteins) : Engh & Huber (2001)
Ideal geometry (DNA, RNA) : Parkinson et al. (1996)
Validation Pipeline (wwPDB-VP) : 2.49

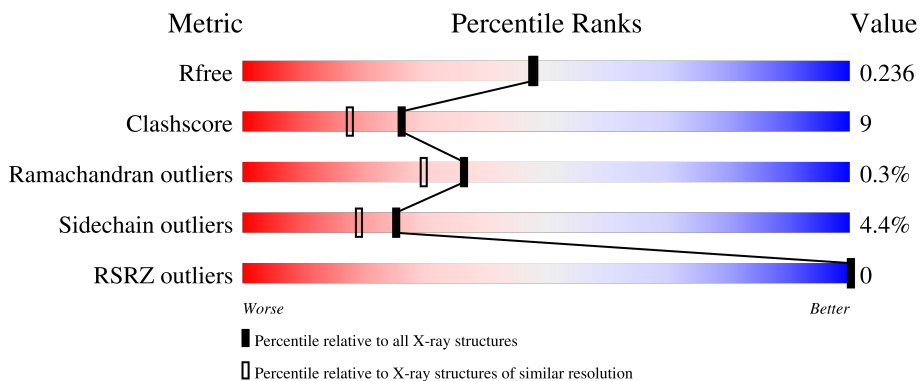
1 Overall quality at a glance

The following experimental techniques were used to determine the structure:

X-RAY DIFFRACTION

The reported resolution of this entry is 2.05 Å.

Percentile scores (ranging between 0-100) for global validation metrics of the entry are shown in the following graphic. The table shows the number of entries on which the scores are based.



Metric	Whole archive (#Entries)	Similar resolution (#Entries, resolution range(Å))
R_{free}	180053	2260 (2.04-2.04)
Clashscore	190562	2333 (2.04-2.04)
Ramachandran outliers	187476	2318 (2.04-2.04)
Sidechain outliers	187428	2318 (2.04-2.04)
RSRZ outliers	180081	2260 (2.04-2.04)

The table below summarises the geometric issues observed across the polymeric chains and their fit to the electron density. The red, orange, yellow and green segments of the lower bar indicate the fraction of residues that contain outliers for ≥ 3 , 2, 1 and 0 types of geometric quality criteria respectively. A grey segment represents the fraction of residues that are not modelled. The numeric value for each fraction is indicated below the corresponding segment, with a dot representing fractions $\leq 5\%$. The upper red bar (where present) indicates the fraction of residues that have poor fit to the electron density. The numeric value is given above the bar.

Mol	Chain	Length	Quality of chain
1	A	210	 74% 14% 11%
1	B	210	 74% 12% 11%

The following table lists non-polymeric compounds, carbohydrate monomers and non-standard residues in protein, DNA, RNA chains that are outliers for geometric or electron-density-fit criteria:

Mol	Type	Chain	Res	Chirality	Geometry	Clashes	Electron density
4	EDO	A	303	-	-	X	-
5	ACT	A	305	-	-	X	-

2 Entry composition [i](#)

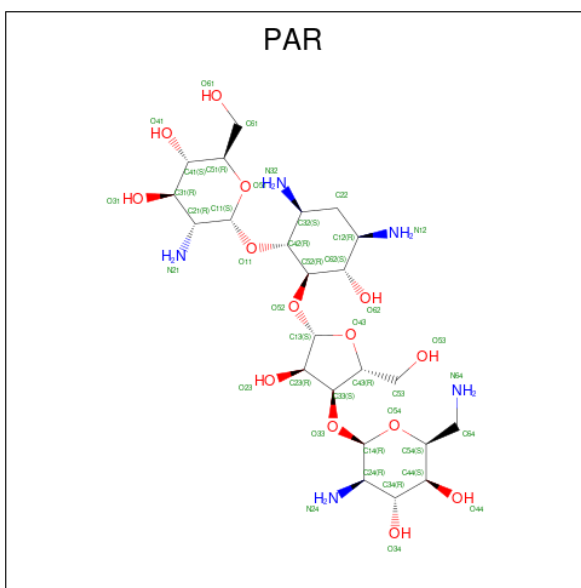
There are 7 unique types of molecules in this entry. The entry contains 3359 atoms, of which 0 are hydrogens and 0 are deuteriums.

In the tables below, the ZeroOcc column contains the number of atoms modelled with zero occupancy, the AltConf column contains the number of residues with at least one atom in alternate conformation and the Trace column contains the number of residues modelled with at most 2 atoms.

- Molecule 1 is a protein called Aminoglycoside 2'-N-acetyltransferase.

Mol	Chain	Residues	Atoms					ZeroOcc	AltConf	Trace
			Total	C	N	O	S			
1	A	187	Total	C	N	O	S	0	0	0
			1457	901	272	278	6			
1	B	187	Total	C	N	O	S	0	0	0
			1455	899	270	280	6			

- Molecule 2 is PAROMOMYCIN (CCD ID: PAR) (formula: $C_{23}H_{45}N_5O_{14}$) (labeled as "Ligand of Interest" by depositor).



Mol	Chain	Residues	Atoms				ZeroOcc	AltConf
			Total	C	N	O		
2	A	1	Total	C	N	O	0	0
			42	23	5	14		
2	B	1	Total	C	N	O	0	0
			42	23	5	14		

- Molecule 3 is COENZYME A (CCD ID: COA) (formula: $C_{21}H_{36}N_7O_{16}P_3S$) (labeled as "Ligand of Interest" by depositor).



Mol	Chain	Residues	Atoms					ZeroOcc	AltConf		
			Total	C	N	O	P			S	
3	A	1	Total	48	21	7	16	3	1	0	0
3	B	1	Total	48	21	7	16	3	1	0	0

- Molecule 4 is 1,2-ETHANEDIOL (CCD ID: EDO) (formula: C₂H₆O₂).



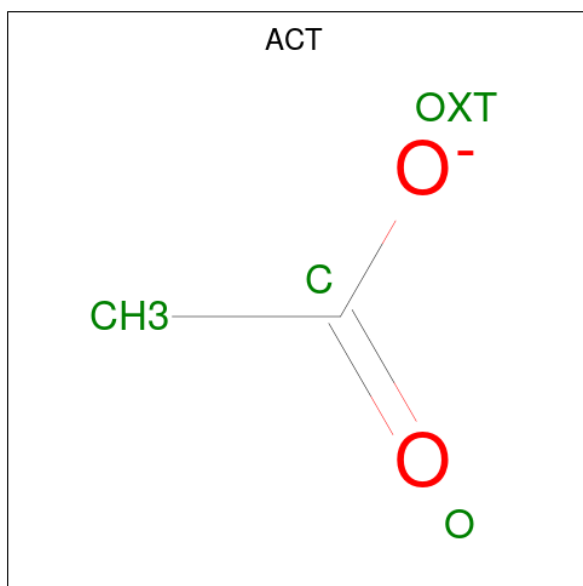
Mol	Chain	Residues	Atoms		ZeroOcc	AltConf
			Total	C O		
4	A	1	Total	4 2 2	0	0
4	A	1	Total	4 2 2	0	0

Continued on next page...

Continued from previous page...

Mol	Chain	Residues	Atoms			ZeroOcc	AltConf
			Total	C	O		
4	B	1	4	2	2	0	0

- Molecule 5 is ACETATE ION (CCD ID: ACT) (formula: $C_2H_3O_2$).



Mol	Chain	Residues	Atoms			ZeroOcc	AltConf
			Total	C	O		
5	A	1	4	2	2	0	0

- Molecule 6 is CALCIUM ION (CCD ID: CA) (formula: Ca).

Mol	Chain	Residues	Atoms		ZeroOcc	AltConf
			Total	Ca		
6	A	2	2	2	0	0
6	B	1	1	1	0	0

- Molecule 7 is water.

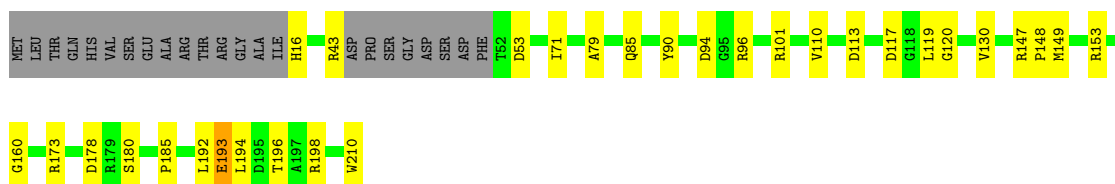
Mol	Chain	Residues	Atoms		ZeroOcc	AltConf
			Total	O		
7	A	127	127	127	0	0
7	B	121	121	121	0	0

3 Residue-property plots [i](#)


These plots are drawn for all protein, RNA, DNA and oligosaccharide chains in the entry. The first graphic for a chain summarises the proportions of the various outlier classes displayed in the second graphic. The second graphic shows the sequence view annotated by issues in geometry and electron density. Residues are color-coded according to the number of geometric quality criteria for which they contain at least one outlier: green = 0, yellow = 1, orange = 2 and red = 3 or more. A red dot above a residue indicates a poor fit to the electron density ($RSRZ > 2$). Stretches of 2 or more consecutive residues without any outlier are shown as a green connector. Residues present in the sample, but not in the model, are shown in grey.

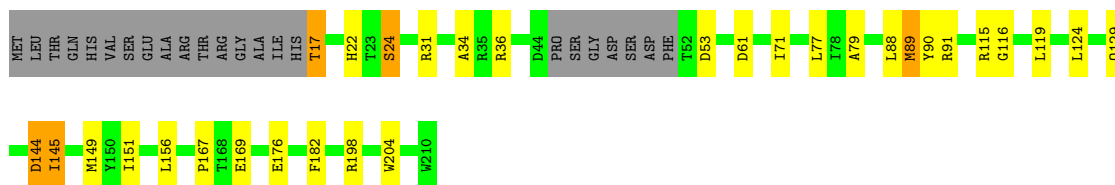
- Molecule 1: Aminoglycoside 2'-N-acetyltransferase

Chain A:  74% 14% 11%



- Molecule 1: Aminoglycoside 2'-N-acetyltransferase

Chain B:  74% 12% 11%



4 Data and refinement statistics i

Property	Value	Source
Space group	P 32	Depositor
Cell constants a, b, c, α , β , γ	56.37Å 56.37Å 122.87Å 90.00° 90.00° 120.00°	Depositor
Resolution (Å)	28.20 – 2.05 28.20 – 2.05	Depositor EDS
% Data completeness (in resolution range)	99.9 (28.20-2.05) 99.9 (28.20-2.05)	Depositor EDS
R_{merge}	0.10	Depositor
R_{sym}	(Not available)	Depositor
$\langle I/\sigma(I) \rangle$ ¹	9.37 (at 2.04Å)	Xtriage
Refinement program	REFMAC 5.8.0258	Depositor
R, R_{free}	0.183 , 0.233 0.190 , 0.236	Depositor DCC
R_{free} test set	1413 reflections (5.15%)	wwPDB-VP
Wilson B-factor (Å ²)	20.2	Xtriage
Anisotropy	0.023	Xtriage
Bulk solvent k_{sol} (e/Å ³), B_{sol} (Å ²)	0.37 , 27.3	EDS
L-test for twinning ²	$\langle L \rangle = 0.43$, $\langle L^2 \rangle = 0.26$	Xtriage
Estimated twinning fraction	0.053 for -h,-k,l 0.076 for h,-h-k,-l 0.227 for -k,-h,-l	Xtriage
F_o, F_c correlation	0.97	EDS
Total number of atoms	3359	wwPDB-VP
Average B, all atoms (Å ²)	25.0	wwPDB-VP

Xtriage's analysis on translational NCS is as follows: *The largest off-origin peak in the Patterson function is 6.34% of the height of the origin peak. No significant pseudotranslation is detected.*

¹Intensities estimated from amplitudes.

²Theoretical values of $\langle |L| \rangle$, $\langle L^2 \rangle$ for acentric reflections are 0.5, 0.333 respectively for untwinned datasets, and 0.375, 0.2 for perfectly twinned datasets.

5 Model quality [i](#)

5.1 Standard geometry [i](#)

Bond lengths and bond angles in the following residue types are not validated in this section: CA, COA, ACT, PAR, EDO

The Z score for a bond length (or angle) is the number of standard deviations the observed value is removed from the expected value. A bond length (or angle) with $|Z| > 5$ is considered an outlier worth inspection. RMSZ is the root-mean-square of all Z scores of the bond lengths (or angles).

Mol	Chain	Bond lengths		Bond angles	
		RMSZ	# Z >5	RMSZ	# Z >5
1	A	1.10	0/1488	1.33	2/2020 (0.1%)
1	B	1.11	1/1485 (0.1%)	1.36	3/2016 (0.1%)
All	All	1.10	1/2973 (0.0%)	1.34	5/4036 (0.1%)

All (1) bond length outliers are listed below:

Mol	Chain	Res	Type	Atoms	Z	Observed(Å)	Ideal(Å)
1	B	167	PRO	C-O	-5.09	1.18	1.24

All (5) bond angle outliers are listed below:

Mol	Chain	Res	Type	Atoms	Z	Observed(°)	Ideal(°)
1	B	144	ASP	CA-CB-CG	6.31	118.91	112.60
1	A	119	LEU	CA-C-N	5.87	126.62	119.99
1	A	119	LEU	C-N-CA	5.87	126.62	119.99
1	B	119	LEU	CA-C-N	5.46	126.16	119.99
1	B	119	LEU	C-N-CA	5.46	126.16	119.99

There are no chirality outliers.

There are no planarity outliers.

5.2 Too-close contacts [i](#)

In the following table, the Non-H and H(model) columns list the number of non-hydrogen atoms and hydrogen atoms in the chain respectively. The H(added) column lists the number of hydrogen atoms added and optimized by MolProbity. The Clashes column lists the number of clashes within the asymmetric unit, whereas Symm-Clashes lists symmetry-related clashes.

Mol	Chain	Non-H	H(model)	H(added)	Clashes	Symm-Clashes
1	A	1457	0	1397	31	0
1	B	1455	0	1394	19	0
2	A	42	0	44	1	0
2	B	42	0	44	6	0
3	A	48	0	32	3	0
3	B	48	0	32	3	0
4	A	8	0	12	4	0
4	B	4	0	6	3	0
5	A	4	0	3	3	0
6	A	2	0	0	0	0
6	B	1	0	0	0	0
7	A	127	0	0	4	0
7	B	121	0	0	4	0
All	All	3359	0	2964	57	0

The all-atom clashscore is defined as the number of clashes found per 1000 atoms (including hydrogen atoms). The all-atom clashscore for this structure is 9.

All (57) close contacts within the same asymmetric unit are listed below, sorted by their clash magnitude.

Atom-1	Atom-2	Interatomic distance (Å)	Clash overlap (Å)
2:B:301:PAR:H24	2:B:301:PAR:H43	1.33	1.09
3:A:302:COA:O9P	3:A:302:COA:H131	1.58	0.98
1:A:110:VAL:HB	3:A:302:COA:H133	1.56	0.87
7:A:515:HOH:O	1:B:129:GLN:HG2	1.77	0.84
2:B:301:PAR:H24	2:B:301:PAR:C43	2.16	0.72
1:B:124:LEU:HD12	1:B:149:MET:HE2	1.72	0.72
1:A:113:ASP:O	4:A:303:EDO:C1	2.38	0.72
1:A:173:ARG:HD2	5:A:305:ACT:O	1.89	0.72
1:B:91:ARG:NH2	4:B:303:EDO:H21	2.06	0.71
1:A:130:VAL:HA	1:B:24:SER:OG	1.92	0.70
1:A:120:GLY:C	1:A:149:MET:CE	2.64	0.69
1:A:110:VAL:HB	3:A:302:COA:CDP	2.22	0.69
1:A:120:GLY:C	1:A:149:MET:HE1	2.23	0.64
1:A:113:ASP:O	4:A:303:EDO:H11	2.00	0.62
1:A:85:GLN:HE21	1:A:101:ARG:HG2	1.65	0.60
1:B:124:LEU:CD1	1:B:149:MET:HE2	2.32	0.59
2:B:301:PAR:H43	2:B:301:PAR:C24	2.14	0.58
1:A:185:PRO:HB3	1:A:194:LEU:CD2	2.38	0.53
1:A:149:MET:O	1:A:153:ARG:HG3	2.10	0.52
1:B:22:HIS:ND1	1:B:24:SER:HB2	2.24	0.52
1:B:91:ARG:NH2	4:B:303:EDO:C2	2.73	0.52

Continued on next page...

Continued from previous page...

Atom-1	Atom-2	Interatomic distance (Å)	Clash overlap (Å)
1:A:101:ARG:NH1	1:B:61:ASP:OD1	2.42	0.51
1:B:34:ALA:HA	1:B:77:LEU:CD2	2.40	0.51
1:A:94:ASP:OD2	1:A:96:ARG:HD3	2.11	0.51
4:A:303:EDO:C1	7:A:427:HOH:O	2.60	0.50
1:B:116:GLY:HA3	3:B:302:COA:N6A	2.27	0.49
1:B:204:TRP:HB3	7:B:506:HOH:O	2.11	0.49
1:A:71:ILE:HB	1:A:79:ALA:HB3	1.96	0.47
1:A:173:ARG:HD2	5:A:305:ACT:C	2.43	0.47
1:A:147:ARG:N	1:A:148:PRO:HD2	2.30	0.47
3:B:302:COA:O5P	7:B:401:HOH:O	2.20	0.47
1:A:120:GLY:O	1:A:149:MET:HE1	2.15	0.47
1:A:180:SER:OG	7:A:401:HOH:O	2.20	0.47
1:A:85:GLN:HE21	1:A:101:ARG:CG	2.27	0.47
1:A:85:GLN:NE2	1:A:101:ARG:HG2	2.30	0.47
1:A:210:TRP:O	2:A:301:PAR:N32	2.49	0.46
1:B:17:THR:HA	7:B:501:HOH:O	2.17	0.45
1:A:16:HIS:NE2	1:A:117:ASP:O	2.49	0.45
1:A:120:GLY:C	1:A:149:MET:HE3	2.41	0.44
1:A:193:GLU:OE1	1:A:193:GLU:N	2.42	0.44
1:B:88:LEU:C	1:B:89:MET:HE3	2.43	0.44
1:A:90:TYR:OH	1:A:198:ARG:HD3	2.18	0.43
1:A:43:ARG:HA	7:A:417:HOH:O	2.18	0.43
1:A:113:ASP:O	4:A:303:EDO:C2	2.66	0.42
1:A:178:ASP:OD1	5:A:305:ACT:H1	2.20	0.42
1:B:115:ARG:HD3	3:B:302:COA:OAP	2.19	0.42
2:B:301:PAR:C43	2:B:301:PAR:C24	2.87	0.42
2:B:301:PAR:O62	2:B:301:PAR:H531	2.19	0.41
1:B:90:TYR:OH	1:B:198:ARG:HD3	2.21	0.41
1:B:91:ARG:CZ	4:B:303:EDO:H21	2.50	0.41
1:B:31:ARG:NH2	7:B:421:HOH:O	2.54	0.41
1:A:194:LEU:HD12	1:A:194:LEU:HA	1.91	0.41
1:B:151:ILE:HG13	1:B:182:PHE:CE1	2.55	0.41
1:B:71:ILE:HB	1:B:79:ALA:HB3	2.03	0.41
2:B:301:PAR:H42	2:B:301:PAR:H13	1.85	0.41
1:A:160:GLY:N	1:A:196:THR:O	2.52	0.40
1:A:120:GLY:CA	1:A:149:MET:HE1	2.51	0.40

There are no symmetry-related clashes.

5.3 Torsion angles [i](#)

5.3.1 Protein backbone [i](#)

In the following table, the Percentiles column shows the percent Ramachandran outliers of the chain as a percentile score with respect to all X-ray entries followed by that with respect to entries of similar resolution.

The Analysed column shows the number of residues for which the backbone conformation was analysed, and the total number of residues.

Mol	Chain	Analysed	Favoured	Allowed	Outliers	Percentiles	
1	A	183/210 (87%)	179 (98%)	4 (2%)	0	100	100
1	B	183/210 (87%)	175 (96%)	7 (4%)	1 (0%)	24	16
All	All	366/420 (87%)	354 (97%)	11 (3%)	1 (0%)	36	30

All (1) Ramachandran outliers are listed below:

Mol	Chain	Res	Type
1	B	145	ILE

5.3.2 Protein sidechains [i](#)

In the following table, the Percentiles column shows the percent sidechain outliers of the chain as a percentile score with respect to all X-ray entries followed by that with respect to entries of similar resolution.

The Analysed column shows the number of residues for which the sidechain conformation was analysed, and the total number of residues.

Mol	Chain	Analysed	Rotameric	Outliers	Percentiles	
1	A	149/168 (89%)	146 (98%)	3 (2%)	48	48
1	B	149/168 (89%)	139 (93%)	10 (7%)	15	8
All	All	298/336 (89%)	285 (96%)	13 (4%)	25	19

All (13) residues with a non-rotameric sidechain are listed below:

Mol	Chain	Res	Type
1	A	53	ASP
1	A	192	LEU
1	A	193	GLU
1	B	17	THR
1	B	24	SER

Continued on next page...

Continued from previous page...

Mol	Chain	Res	Type
1	B	36	ARG
1	B	53	ASP
1	B	89	MET
1	B	144	ASP
1	B	145	ILE
1	B	156	LEU
1	B	169	GLU
1	B	176	GLU

Sometimes sidechains can be flipped to improve hydrogen bonding and reduce clashes. All (3) such sidechains are listed below:

Mol	Chain	Res	Type
1	A	73	HIS
1	A	85	GLN
1	B	74	HIS

5.3.3 RNA [i](#)

There are no RNA molecules in this entry.

5.4 Non-standard residues in protein, DNA, RNA chains [i](#)

There are no non-standard protein/DNA/RNA residues in this entry.

5.5 Carbohydrates [i](#)

There are no oligosaccharides in this entry.

5.6 Ligand geometry [i](#)

Of 11 ligands modelled in this entry, 3 are monoatomic - leaving 8 for Mogul analysis.

In the following table, the Counts columns list the number of bonds (or angles) for which Mogul statistics could be retrieved, the number of bonds (or angles) that are observed in the model and the number of bonds (or angles) that are defined in the Chemical Component Dictionary. The Link column lists molecule types, if any, to which the group is linked. The Z score for a bond length (or angle) is the number of standard deviations the observed value is removed from the expected value. A bond length (or angle) with $|Z| > 2$ is considered an outlier worth inspection. RMSZ is the root-mean-square of all Z scores of the bond lengths (or angles).

Mol	Type	Chain	Res	Link	Bond lengths			Bond angles		
					Counts	RMSZ	# Z > 2	Counts	RMSZ	# Z > 2
4	EDO	A	304	-	3,3,3	0.27	0	2,2,2	0.06	0
5	ACT	A	305	-	3,3,3	1.33	0	3,3,3	0.74	0
4	EDO	B	303	-	3,3,3	0.33	0	2,2,2	0.40	0
4	EDO	A	303	-	3,3,3	0.25	0	2,2,2	0.62	0
3	COA	A	302	-	47,50,50	0.74	2 (4%)	69,75,75	1.35	5 (7%)
2	PAR	A	301	6	44,45,45	0.44	0	63,67,67	0.98	5 (7%)
2	PAR	B	301	6	44,45,45	0.52	0	63,67,67	1.05	5 (7%)
3	COA	B	302	-	47,50,50	0.60	1 (2%)	69,75,75	0.86	2 (2%)

In the following table, the Chirals column lists the number of chiral outliers, the number of chiral centers analysed, the number of these observed in the model and the number defined in the Chemical Component Dictionary. Similar counts are reported in the Torsion and Rings columns. '-' means no outliers of that kind were identified.

Mol	Type	Chain	Res	Link	Chirals	Torsions	Rings
4	EDO	A	304	-	-	1/1/1/1	-
4	EDO	B	303	-	-	1/1/1/1	-
4	EDO	A	303	-	-	1/1/1/1	-
3	COA	A	302	-	-	18/48/64/64	0/3/3/3
2	PAR	A	301	6	-	7/18/94/94	0/4/4/4
2	PAR	B	301	6	-	11/18/94/94	0/4/4/4
3	COA	B	302	-	-	10/48/64/64	0/3/3/3

All (3) bond length outliers are listed below:

Mol	Chain	Res	Type	Atoms	Z	Observed(Å)	Ideal(Å)
3	A	302	COA	P3B-O3B	2.81	1.64	1.59
3	B	302	COA	P3B-O3B	2.16	1.63	1.59
3	A	302	COA	OAP-CAP	2.10	1.46	1.42

All (17) bond angle outliers are listed below:

Mol	Chain	Res	Type	Atoms	Z	Observed(°)	Ideal(°)
3	A	302	COA	O6A-CCP-CBP	-5.87	101.11	110.55
3	A	302	COA	OAP-CAP-CBP	-4.25	100.33	110.18
3	B	302	COA	P3B-O3B-C3B	-4.22	112.16	123.43
3	A	302	COA	P3B-O3B-C3B	-3.90	113.01	123.43
2	B	301	PAR	C14-O33-C33	3.09	125.30	117.98
3	A	302	COA	C2B-C3B-C4B	-2.81	98.32	103.24
3	A	302	COA	O5A-P2A-O4A	2.72	125.12	112.44

Continued on next page...

Continued from previous page...

Mol	Chain	Res	Type	Atoms	Z	Observed(°)	Ideal(°)
2	A	301	PAR	O52-C52-C42	2.58	113.98	107.42
2	B	301	PAR	O11-C42-C32	-2.44	103.36	109.18
2	B	301	PAR	C11-C21-N21	2.31	114.36	110.20
2	A	301	PAR	O11-C42-C32	-2.26	103.79	109.18
2	B	301	PAR	C32-C22-C12	-2.22	107.22	111.02
2	A	301	PAR	O51-C51-C41	2.20	113.66	109.70
2	A	301	PAR	C11-O11-C42	2.11	122.99	117.98
2	B	301	PAR	O33-C14-C24	2.06	111.45	108.08
3	B	302	COA	C3P-N4P-C5P	2.04	126.62	122.82
2	A	301	PAR	C11-C21-N21	2.02	113.85	110.20

There are no chirality outliers.

All (49) torsion outliers are listed below:

Mol	Chain	Res	Type	Atoms
2	B	301	PAR	C43-C33-O33-C14
2	B	301	PAR	C24-C14-O33-C33
3	A	302	COA	C5B-O5B-P1A-O1A
3	A	302	COA	C5B-O5B-P1A-O2A
3	A	302	COA	CAP-CBP-CCP-O6A
3	A	302	COA	O9P-C9P-CAP-CBP
3	A	302	COA	O9P-C9P-CAP-OAP
3	A	302	COA	N8P-C9P-CAP-OAP
3	B	302	COA	C2P-C3P-N4P-C5P
2	B	301	PAR	O54-C14-O33-C33
3	B	302	COA	O5P-C5P-N4P-C3P
3	A	302	COA	C3B-C4B-C5B-O5B
3	A	302	COA	O4B-C4B-C5B-O5B
2	A	301	PAR	C42-C52-O52-C13
2	A	301	PAR	C52-C42-O11-C11
3	B	302	COA	C6P-C5P-N4P-C3P
2	B	301	PAR	C52-C42-O11-C11
2	B	301	PAR	C33-C43-C53-O53
2	B	301	PAR	C42-C52-O52-C13
3	A	302	COA	C6P-C7P-N8P-C9P
2	B	301	PAR	C62-C52-O52-C13
2	B	301	PAR	O43-C43-C53-O53
3	B	302	COA	C3B-C4B-C5B-O5B
4	A	303	EDO	O1-C1-C2-O2
2	A	301	PAR	O43-C43-C53-O53
3	B	302	COA	O4B-C4B-C5B-O5B
2	A	301	PAR	C62-C52-O52-C13

Continued on next page...

Continued from previous page...

Mol	Chain	Res	Type	Atoms
2	B	301	PAR	O51-C11-O11-C42
4	A	304	EDO	O1-C1-C2-O2
4	B	303	EDO	O1-C1-C2-O2
2	A	301	PAR	C33-C43-C53-O53
3	A	302	COA	N8P-C9P-CAP-CBP
3	A	302	COA	C2B-C1B-N9A-C8A
3	B	302	COA	C2B-C1B-N9A-C8A
2	A	301	PAR	O51-C11-O11-C42
2	A	301	PAR	C32-C42-O11-C11
2	B	301	PAR	C32-C42-O11-C11
3	A	302	COA	CDP-CBP-CCP-O6A
3	A	302	COA	CEP-CBP-CCP-O6A
3	A	302	COA	O9P-C9P-N8P-C7P
2	B	301	PAR	O54-C54-C64-N64
3	A	302	COA	C2P-C3P-N4P-C5P
3	A	302	COA	C5B-O5B-P1A-O3A
3	B	302	COA	C5B-O5B-P1A-O1A
3	B	302	COA	O4B-C1B-N9A-C4A
3	A	302	COA	CAP-C9P-N8P-C7P
3	B	302	COA	O4B-C1B-N9A-C8A
3	B	302	COA	C3B-O3B-P3B-O7A
3	A	302	COA	O4B-C1B-N9A-C8A

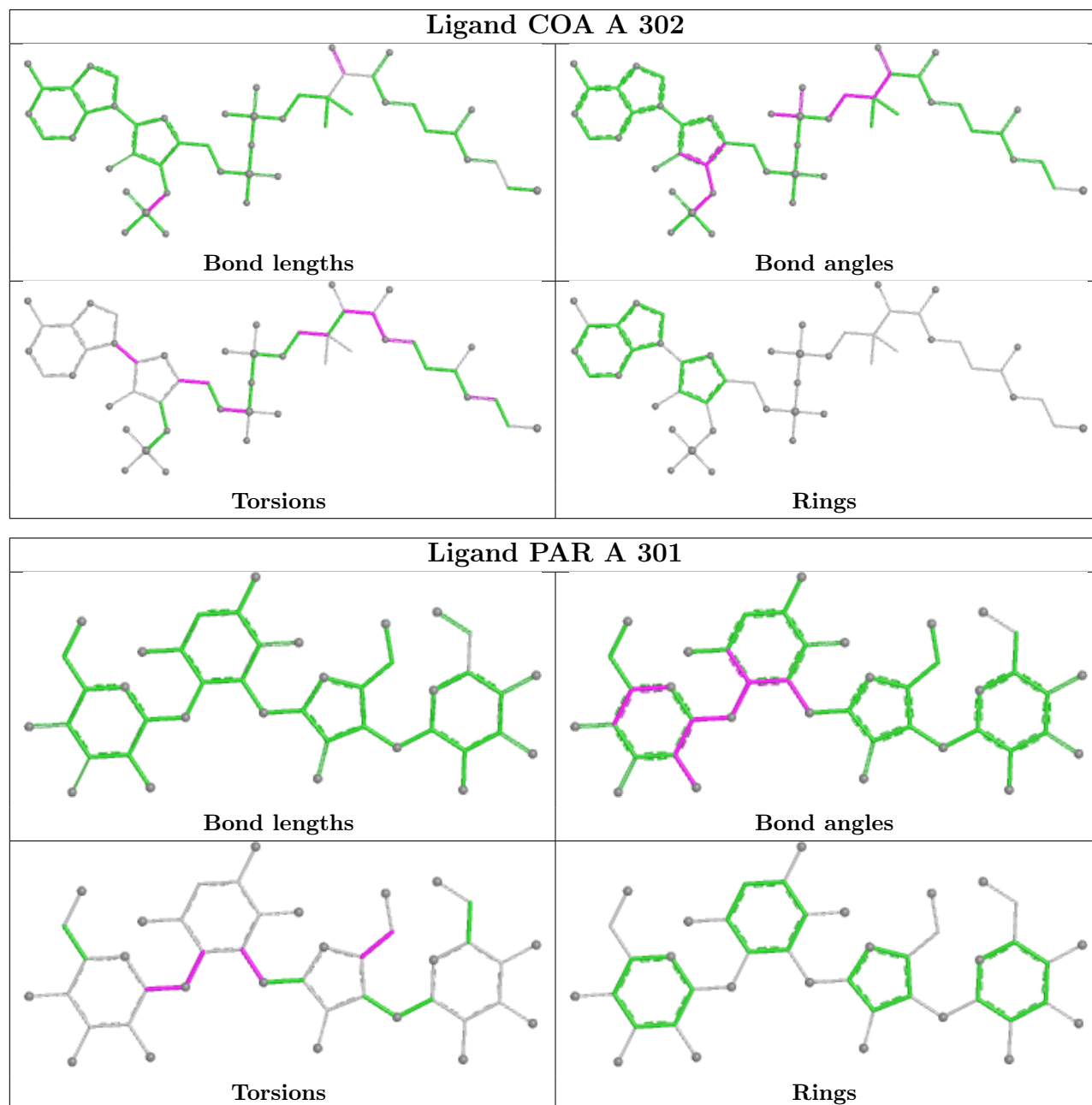
There are no ring outliers.

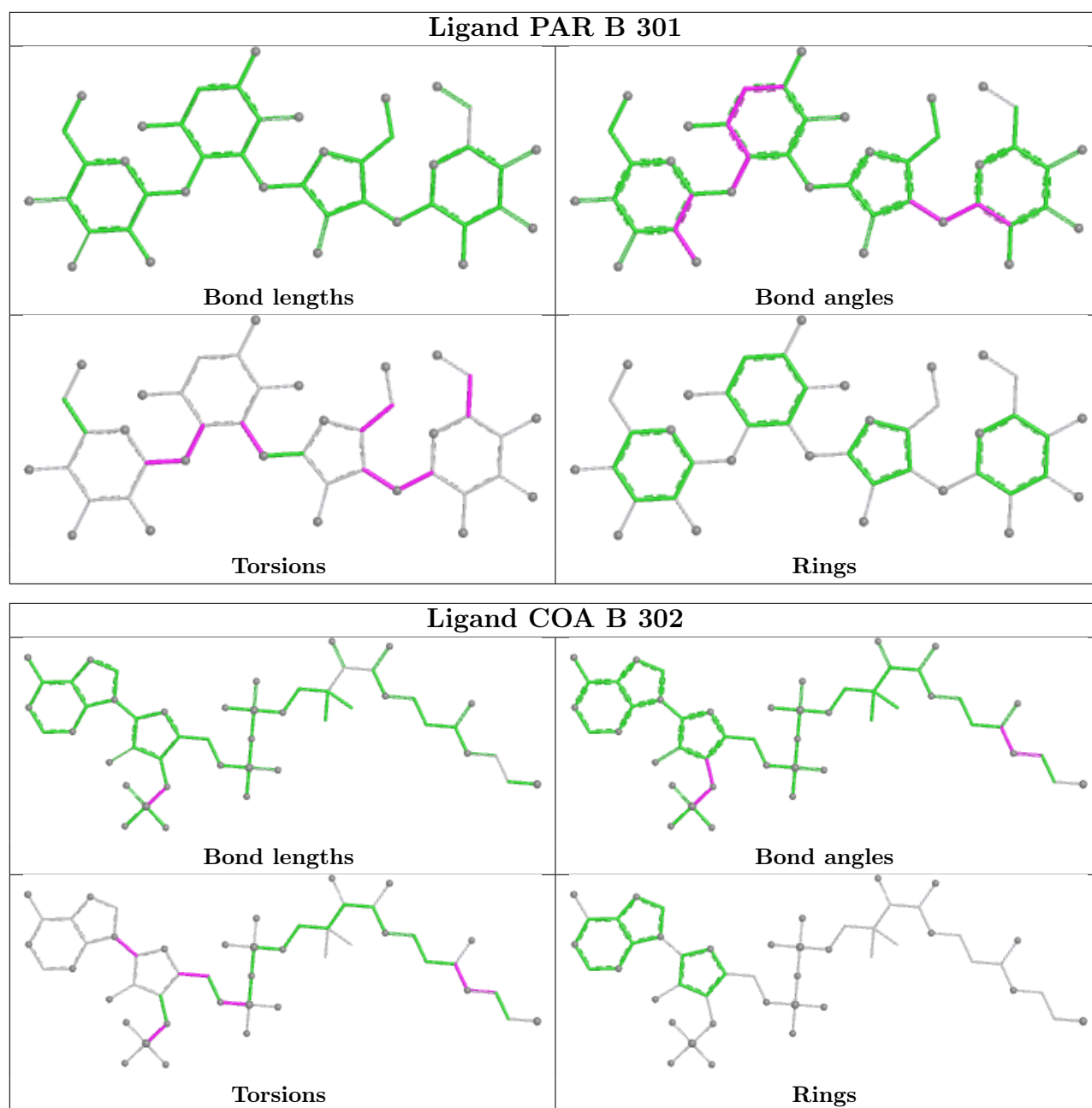
7 monomers are involved in 23 short contacts:

Mol	Chain	Res	Type	Clashes	Symm-Clashes
5	A	305	ACT	3	0
4	B	303	EDO	3	0
4	A	303	EDO	4	0
3	A	302	COA	3	0
2	A	301	PAR	1	0
2	B	301	PAR	6	0
3	B	302	COA	3	0

The following is a two-dimensional graphical depiction of Mogul quality analysis of bond lengths, bond angles, torsion angles, and ring geometry for all instances of the Ligand of Interest. In addition, ligands with molecular weight > 250 and outliers as shown on the validation Tables will also be included. For torsion angles, if less than 5% of the Mogul distribution of torsion angles is within 10 degrees of the torsion angle in question, then that torsion angle is considered an outlier. Any bond that is central to one or more torsion angles identified as an outlier by Mogul will be highlighted in the graph. For rings, the root-mean-square deviation (RMSD) between the ring

in question and similar rings identified by Mogul is calculated over all ring torsion angles. If the average RMSD is greater than 60 degrees and the minimal RMSD between the ring in question and any Mogul-identified rings is also greater than 60 degrees, then that ring is considered an outlier. The outliers are highlighted in purple. The color gray indicates Mogul did not find sufficient equivalents in the CSD to analyse the geometry.





5.7 Other polymers [\(i\)](#)

There are no such residues in this entry.

5.8 Polymer linkage issues [\(i\)](#)

There are no chain breaks in this entry.

6 Fit of model and data [i](#)

6.1 Protein, DNA and RNA chains [i](#)

In the following table, the column labelled ‘#RSRZ> 2’ contains the number (and percentage) of RSRZ outliers, followed by percent RSRZ outliers for the chain as percentile scores relative to all X-ray entries and entries of similar resolution. The OWAB column contains the minimum, median, 95th percentile and maximum values of the occupancy-weighted average B-factor per residue. The column labelled ‘Q< 0.9’ lists the number of (and percentage) of residues with an average occupancy less than 0.9.

Mol	Chain	Analysed	<RSRZ>	#RSRZ>2	OWAB(Å ²)	Q<0.9
1	A	187/210 (89%)	-1.44	0 100 100	11, 22, 43, 67	0
1	B	187/210 (89%)	-1.44	0 100 100	10, 21, 41, 61	0
All	All	374/420 (89%)	-1.44	0 100 100	10, 21, 43, 67	0

There are no RSRZ outliers to report.

6.2 Non-standard residues in protein, DNA, RNA chains [i](#)

There are no non-standard protein/DNA/RNA residues in this entry.

6.3 Carbohydrates [i](#)

There are no oligosaccharides in this entry.

6.4 Ligands [i](#)

In the following table, the Atoms column lists the number of modelled atoms in the group and the number defined in the chemical component dictionary. The B-factors column lists the minimum, median, 95th percentile and maximum values of B factors of atoms in the group. The column labelled ‘Q< 0.9’ lists the number of atoms with occupancy less than 0.9.

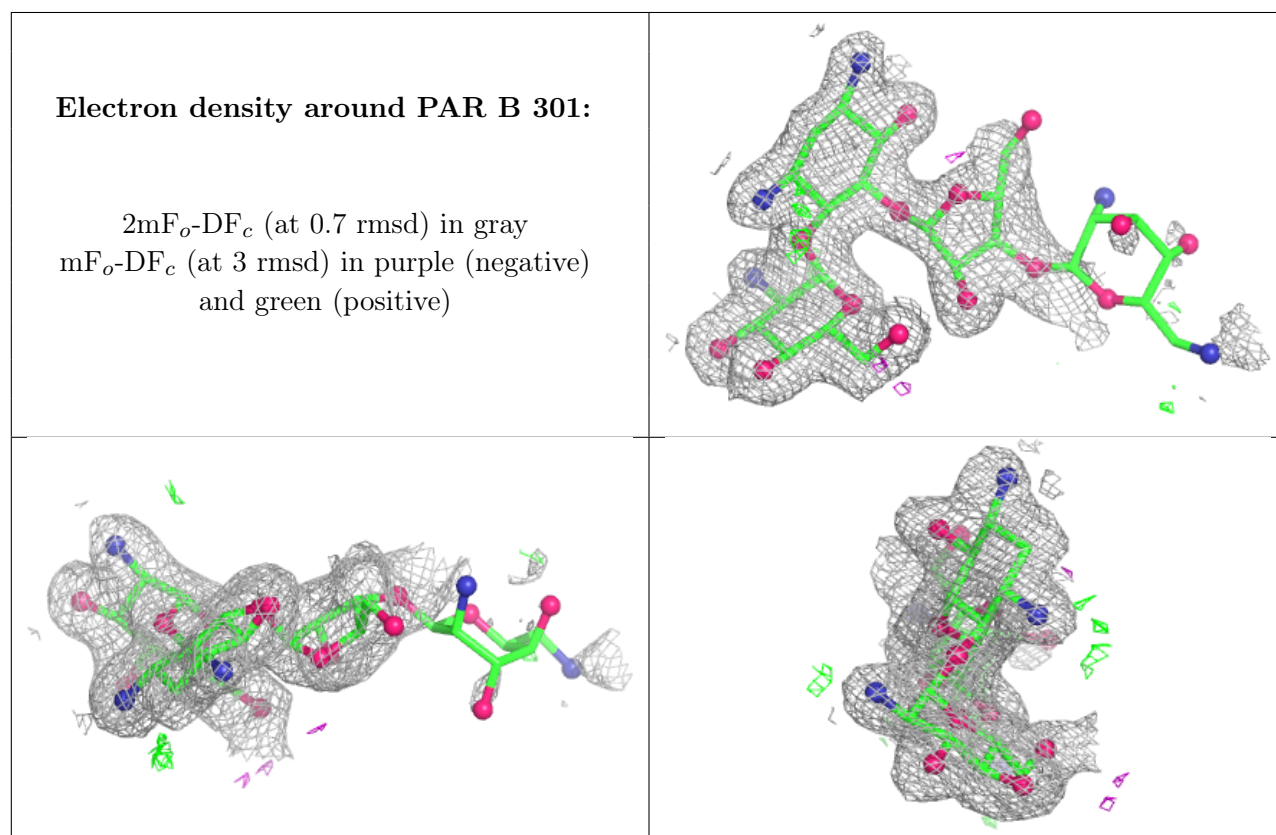
Mol	Type	Chain	Res	Atoms	RSCC	RSR	B-factors(Å ²)	Q<0.9
4	EDO	A	303	4/4	0.97	0.05	29,31,33,34	0
4	EDO	A	304	4/4	0.98	0.05	34,35,36,36	0
4	EDO	B	303	4/4	0.98	0.05	33,35,37,39	0
5	ACT	A	305	4/4	0.98	0.06	28,32,33,34	0
6	CA	A	307	1/1	0.98	0.05	62,62,62,62	0
2	PAR	B	301	42/42	0.99	0.04	15,25,70,74	0
3	COA	A	302	48/48	0.99	0.05	21,31,83,88	0

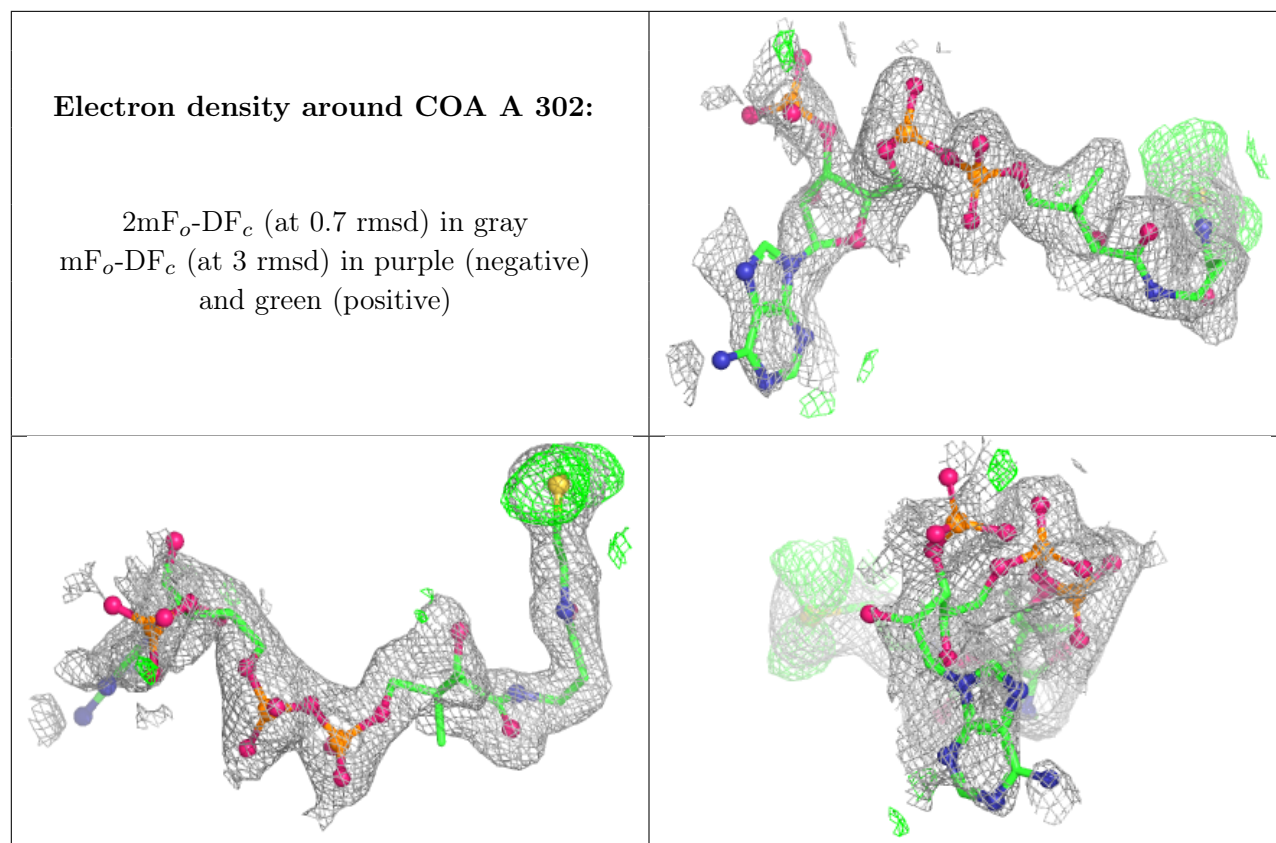
Continued on next page...

Continued from previous page...

Mol	Type	Chain	Res	Atoms	RSCC	RSR	B-factors(\AA^2)	Q<0.9
3	COA	B	302	48/48	0.99	0.04	19,28,99,110	0
6	CA	A	306	1/1	0.99	0.06	35,35,35,35	0
2	PAR	A	301	42/42	0.99	0.04	17,27,61,67	0
6	CA	B	304	1/1	0.99	0.04	33,33,33,33	0

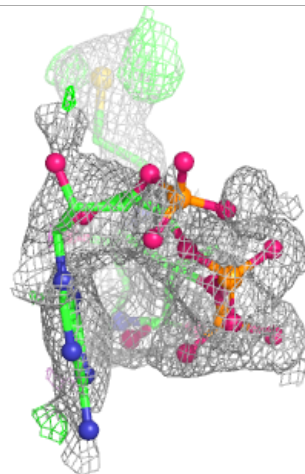
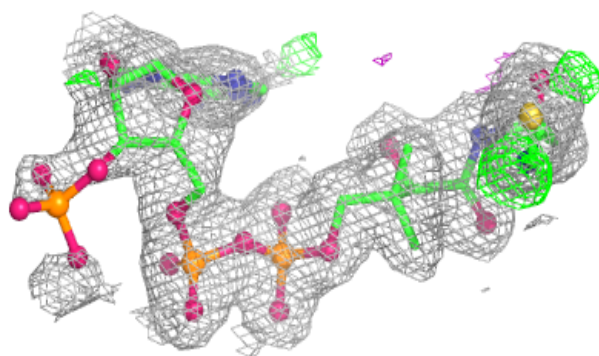
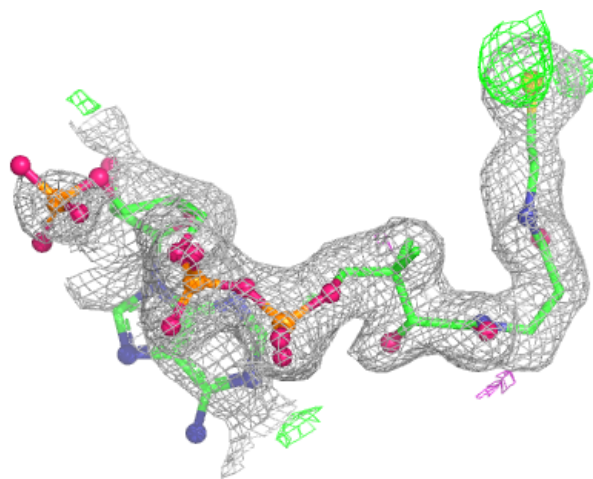
The following is a graphical depiction of the model fit to experimental electron density of all instances of the Ligand of Interest. In addition, ligands with molecular weight > 250 and outliers as shown on the geometry validation Tables will also be included. Each fit is shown from different orientation to approximate a three-dimensional view.

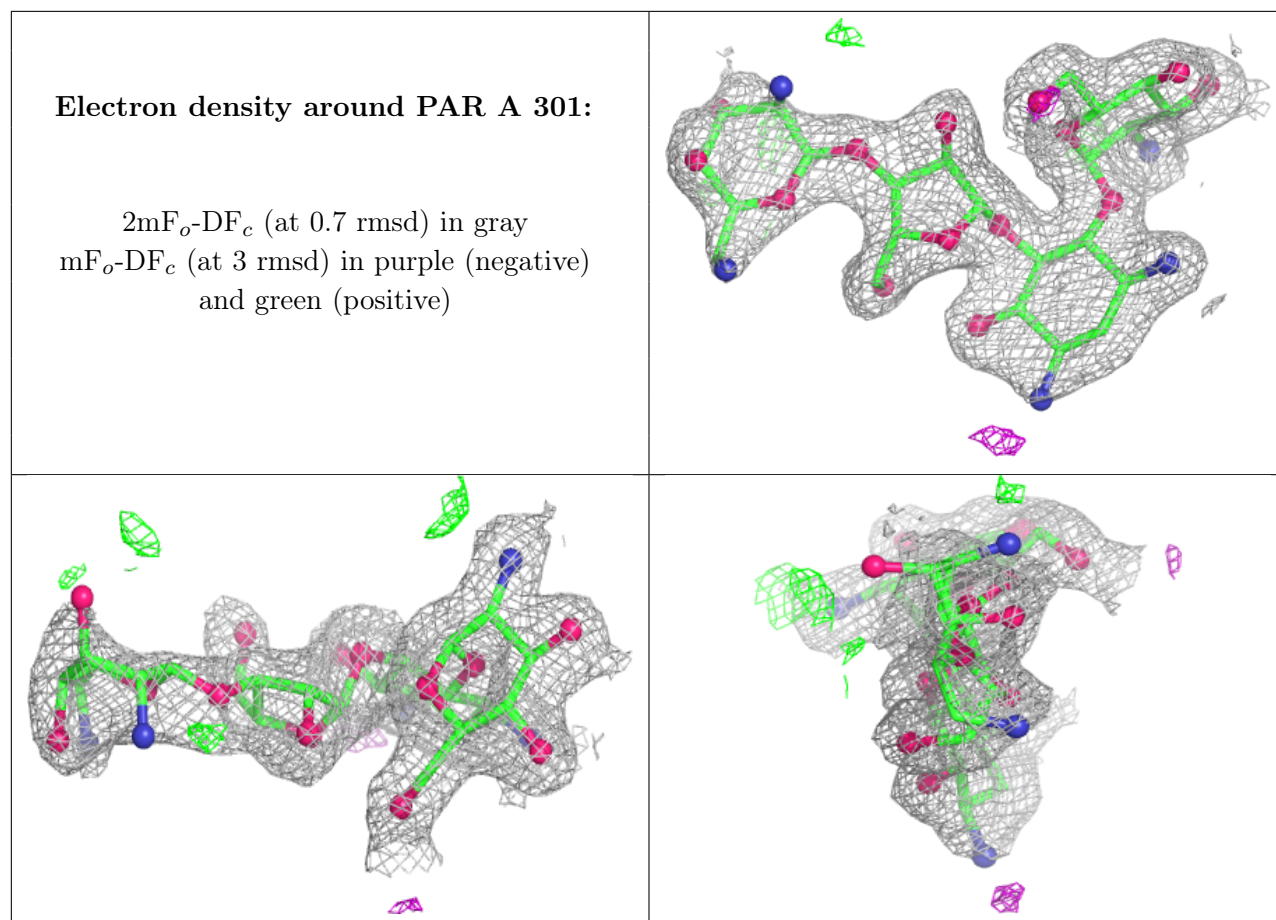




Electron density around COA B 302:

$2mF_o-DF_c$ (at 0.7 rmsd) in gray
 mF_o-DF_c (at 3 rmsd) in purple (negative)
and green (positive)





6.5 Other polymers [\(i\)](#)

There are no such residues in this entry.