



Full wwPDB X-ray Structure Validation Report ⓘ

Mar 20, 2026 – 05:36 PM UTC

PDB ID : 7CSB / pdb_00007csb
Title : AtPrR1 with NADP+ and (+)pinoresinol
Authors : Shao, K.; Zhang, P.
Deposited on : 2020-08-14
Resolution : 2.00 Å(reported)

This is a Full wwPDB X-ray Structure Validation Report for a publicly released PDB entry.

We welcome your comments at validation@mail.wwpdb.org

A user guide is available at

<https://www.wwpdb.org/validation/2017/XrayValidationReportHelp>

with specific help available everywhere you see the ⓘ symbol.

The types of validation reports are described at

<http://www.wwpdb.org/validation/2017/FAQs#types>.

The following versions of software and data (see [references ⓘ](#)) were used in the production of this report:

MolProbity : 4-5-2 with Phenix2.0
Mogul : 2022.3.0, CSD as543be (2022)
Xtrriage (Phenix) : 2.0
EDS : 3.0
Buster-report : wwPDB partial adaption of 1.1.7 (2018)
Percentile statistics : 20250101.v01 (using entries in the PDB archive January 1st 2025)
CCP4 : 9.0.010 (Gargrove)
Density-Fitness : 1.0.12
Ideal geometry (proteins) : Engh & Huber (2001)
Ideal geometry (DNA, RNA) : Parkinson et al. (1996)
Validation Pipeline (wwPDB-VP) : 2.49

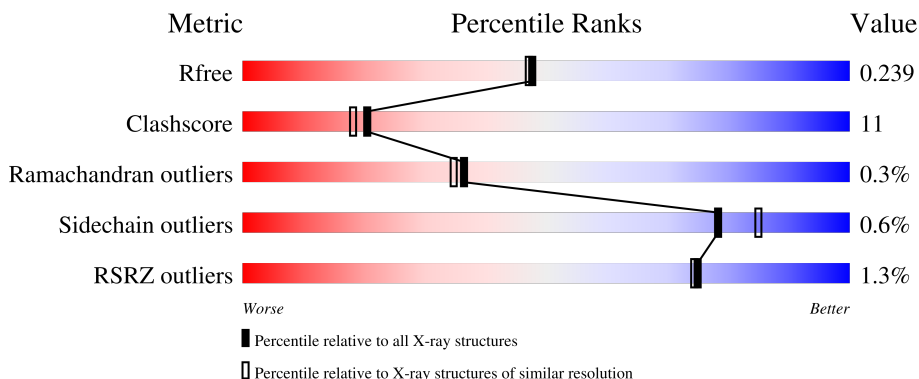
1 Overall quality at a glance

The following experimental techniques were used to determine the structure:

X-RAY DIFFRACTION


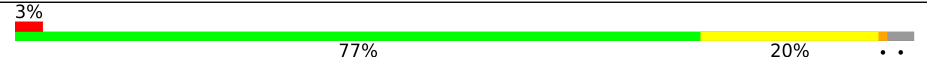
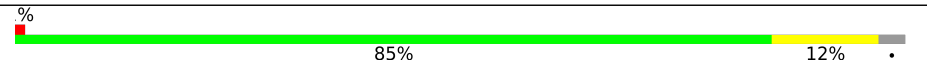

The reported resolution of this entry is 2.00 Å.

Percentile scores (ranging between 0-100) for global validation metrics of the entry are shown in the following graphic. The table shows the number of entries on which the scores are based.



Metric	Whole archive (#Entries)	Similar resolution (#Entries, resolution range(Å))
R_{free}	180053	10052 (2.00-2.00)
Clashscore	190562	11152 (2.00-2.00)
Ramachandran outliers	187476	11031 (2.00-2.00)
Sidechain outliers	187428	11029 (2.00-2.00)
RSRZ outliers	180081	10067 (2.00-2.00)

The table below summarises the geometric issues observed across the polymeric chains and their fit to the electron density. The red, orange, yellow and green segments of the lower bar indicate the fraction of residues that contain outliers for ≥ 3 , 2, 1 and 0 types of geometric quality criteria respectively. A grey segment represents the fraction of residues that are not modelled. The numeric value for each fraction is indicated below the corresponding segment, with a dot representing fractions $\leq 5\%$. The upper red bar (where present) indicates the fraction of residues that have poor fit to the electron density. The numeric value is given above the bar.

Mol	Chain	Length	Quality of chain
1	A	317	
1	B	317	
1	C	317	
1	D	317	

2 Entry composition [i](#)

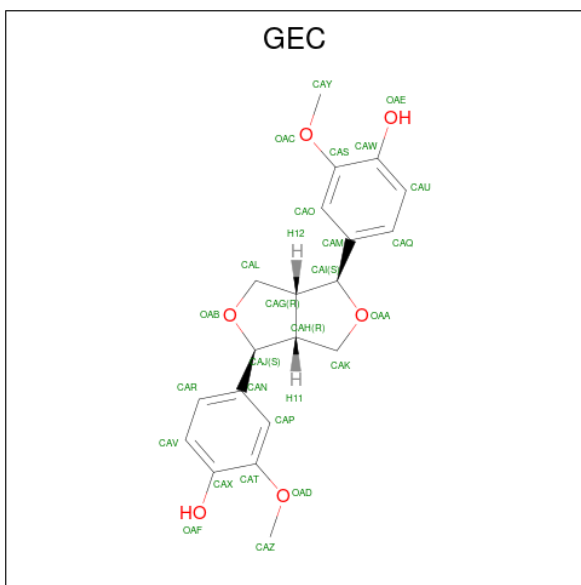
There are 4 unique types of molecules in this entry. The entry contains 10713 atoms, of which 104 are hydrogens and 0 are deuteriums.

In the tables below, the ZeroOcc column contains the number of atoms modelled with zero occupancy, the AltConf column contains the number of residues with at least one atom in alternate conformation and the Trace column contains the number of residues modelled with at most 2 atoms.

- Molecule 1 is a protein called Pinorensinol reductase 1.

Mol	Chain	Residues	Atoms					ZeroOcc	AltConf	Trace
			Total	C	N	O	S			
1	C	309	Total 2438	C 1561	N 414	O 452	S 11	0	0	0
1	D	309	Total 2438	C 1561	N 414	O 452	S 11	0	0	0
1	A	308	Total 2429	C 1555	N 412	O 451	S 11	0	0	0
1	B	309	Total 2438	C 1561	N 414	O 452	S 11	0	0	0

- Molecule 2 is 4-[(3S,3aR,6S,6aR)-6-(3-methoxy-4-oxidanyl-phenyl)-1,3,3a,4,6,6a-hexahydrofuro[3,4-c]furan-3-yl]-2-methoxy-phenol (CCD ID: GEC) (formula: C₂₀H₂₂O₆).



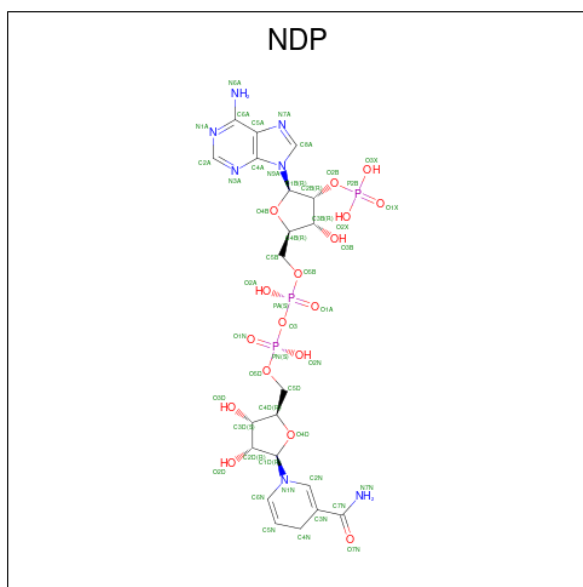
Mol	Chain	Residues	Atoms			ZeroOcc	AltConf
			Total	C	O		
2	C	1	Total 26	C 20	O 6	0	0
2	D	1	Total 26	C 20	O 6	0	0

Continued on next page...

Continued from previous page...

Mol	Chain	Residues	Atoms			ZeroOcc	AltConf
2	A	1	Total	C	O	0	0
			26	20	6		
2	B	1	Total	C	O	0	0
			26	20	6		

- Molecule 3 is NADPH DIHYDRO-NICOTINAMIDE-ADENINE-DINUCLEOTIDE PHOSPHATE (CCD ID: NDP) (formula: C₂₁H₃₀N₇O₁₇P₃) (labeled as "Ligand of Interest" by depositor).



Mol	Chain	Residues	Atoms					ZeroOcc	AltConf	
3	C	1	Total	C	H	N	O	P	0	0
			74	21	26	7	17	3		
3	D	1	Total	C	H	N	O	P	0	0
			74	21	26	7	17	3		
3	A	1	Total	C	H	N	O	P	0	0
			74	21	26	7	17	3		
3	B	1	Total	C	H	N	O	P	0	0
			74	21	26	7	17	3		

- Molecule 4 is water.

Mol	Chain	Residues	Atoms		ZeroOcc	AltConf
4	C	159	Total	O	0	0
			159	159		
4	D	211	Total	O	0	0
			211	211		

Continued on next page...

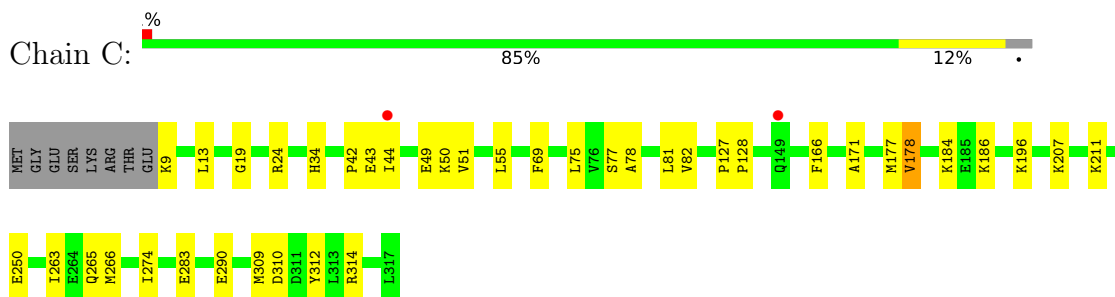
Continued from previous page...

Mol	Chain	Residues	Atoms		ZeroOcc	AltConf
4	A	108	Total 108	O 108	0	0
4	B	92	Total 92	O 92	0	0

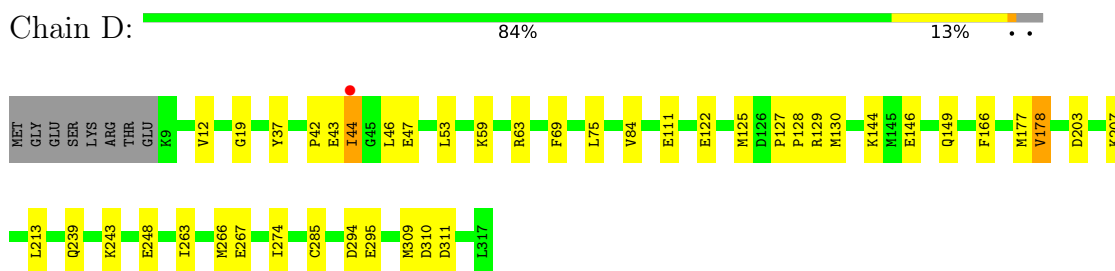
3 Residue-property plots [i](#)

These plots are drawn for all protein, RNA, DNA and oligosaccharide chains in the entry. The first graphic for a chain summarises the proportions of the various outlier classes displayed in the second graphic. The second graphic shows the sequence view annotated by issues in geometry and electron density. Residues are color-coded according to the number of geometric quality criteria for which they contain at least one outlier: green = 0, yellow = 1, orange = 2 and red = 3 or more. A red dot above a residue indicates a poor fit to the electron density ($RSRZ > 2$). Stretches of 2 or more consecutive residues without any outlier are shown as a green connector. Residues present in the sample, but not in the model, are shown in grey.

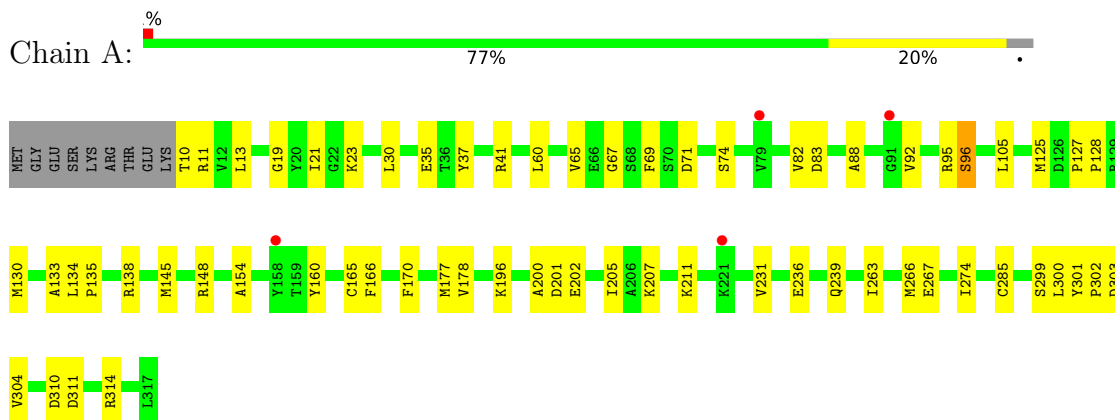
- Molecule 1: Pinoresinol reductase 1



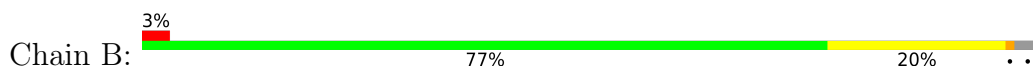
- Molecule 1: Pinoresinol reductase 1

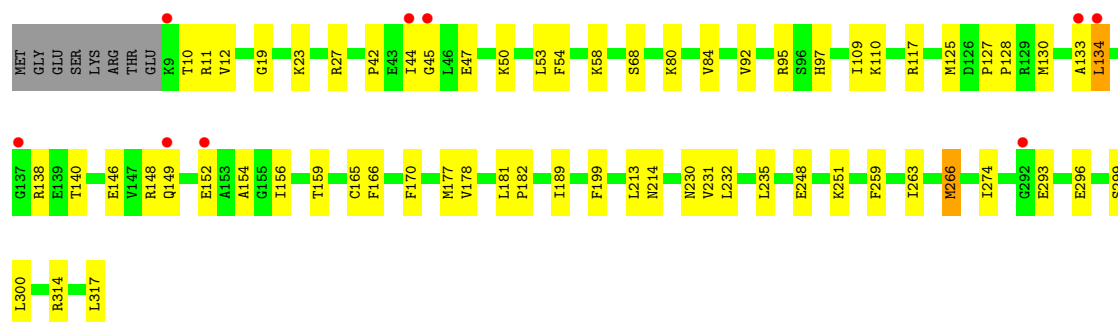


- Molecule 1: Pinoresinol reductase 1



- Molecule 1: Pinoresinol reductase 1





4 Data and refinement statistics i

Property	Value	Source
Space group	P 1 21 1	Depositor
Cell constants a, b, c, α , β , γ	74.16Å 144.72Å 77.02Å 90.00° 116.29° 90.00°	Depositor
Resolution (Å)	33.90 – 2.00 33.90 – 2.00	Depositor EDS
% Data completeness (in resolution range)	88.5 (33.90-2.00) 81.6 (33.90-2.00)	Depositor EDS
R_{merge}	0.09	Depositor
R_{sym}	(Not available)	Depositor
$\langle I/\sigma(I) \rangle$ ¹	2.22 (at 2.00Å)	Xtrriage
Refinement program	PHENIX 1.10_2155	Depositor
R, R_{free}	0.200 , 0.239 0.201 , 0.239	Depositor DCC
R_{free} test set	2006 reflections (2.31%)	wwPDB-VP
Wilson B-factor (Å ²)	32.1	Xtrriage
Anisotropy	0.217	Xtrriage
Bulk solvent k_{sol} (e/Å ³), B_{sol} (Å ²)	0.31 , 29.0	EDS
L-test for twinning ²	$\langle L \rangle = 0.50$, $\langle L^2 \rangle = 0.33$	Xtrriage
Estimated twinning fraction	0.020 for l,-k,h	Xtrriage
F_o, F_c correlation	0.96	EDS
Total number of atoms	10713	wwPDB-VP
Average B, all atoms (Å ²)	40.0	wwPDB-VP

Xtrriage's analysis on translational NCS is as follows: *The largest off-origin peak in the Patterson function is 3.83% of the height of the origin peak. No significant pseudotranslation is detected.*

¹Intensities estimated from amplitudes.

²Theoretical values of $\langle |L| \rangle$, $\langle L^2 \rangle$ for acentric reflections are 0.5, 0.333 respectively for untwinned datasets, and 0.375, 0.2 for perfectly twinned datasets.

5 Model quality [i](#)

5.1 Standard geometry [i](#)

Bond lengths and bond angles in the following residue types are not validated in this section: GEC, NDP

The Z score for a bond length (or angle) is the number of standard deviations the observed value is removed from the expected value. A bond length (or angle) with $|Z| > 5$ is considered an outlier worth inspection. RMSZ is the root-mean-square of all Z scores of the bond lengths (or angles).

Mol	Chain	Bond lengths		Bond angles	
		RMSZ	# Z >5	RMSZ	# Z >5
1	A	0.33	0/2479	0.54	0/3355
1	B	0.32	0/2488	0.54	0/3366
1	C	0.39	0/2488	0.58	0/3366
1	D	0.41	0/2488	0.59	0/3366
All	All	0.37	0/9943	0.56	0/13453

There are no bond length outliers.

There are no bond angle outliers.

There are no chirality outliers.

There are no planarity outliers.

5.2 Too-close contacts [i](#)

In the following table, the Non-H and H(model) columns list the number of non-hydrogen atoms and hydrogen atoms in the chain respectively. The H(added) column lists the number of hydrogen atoms added and optimized by MolProbity. The Clashes column lists the number of clashes within the asymmetric unit, whereas Symm-Clashes lists symmetry-related clashes.

Mol	Chain	Non-H	H(model)	H(added)	Clashes	Symm-Clashes
1	A	2429	0	2440	63	0
1	B	2438	0	2453	66	0
1	C	2438	0	2453	42	0
1	D	2438	0	2453	40	0
2	A	26	0	0	4	0
2	B	26	0	0	4	0
2	C	26	0	0	6	0
2	D	26	0	0	6	0
3	A	48	26	26	6	0

Continued on next page...

Continued from previous page...

Mol	Chain	Non-H	H(model)	H(added)	Clashes	Symm-Clashes
3	B	48	26	26	5	0
3	C	48	26	26	5	0
3	D	48	26	26	4	0
4	A	108	0	0	9	0
4	B	92	0	0	9	0
4	C	159	0	0	7	0
4	D	211	0	0	6	0
All	All	10609	104	9903	223	0

The all-atom clashscore is defined as the number of clashes found per 1000 atoms (including hydrogen atoms). The all-atom clashscore for this structure is 11.

All (223) close contacts within the same asymmetric unit are listed below, sorted by their clash magnitude.

Atom-1	Atom-2	Interatomic distance (Å)	Clash overlap (Å)
2:D:401:GEC:OAA	2:D:401:GEC:CAI	1.84	1.17
2:A:401:GEC:CAI	2:A:401:GEC:OAA	1.87	1.12
2:C:401:GEC:CAI	2:C:401:GEC:OAA	1.90	1.11
1:B:97:HIS:NE2	1:B:140:THR:HG22	1.74	1.01
1:C:178:VAL:HA	1:D:46:LEU:HD11	1.42	1.00
1:A:263:ILE:HA	1:A:266:MET:HE2	1.47	0.95
2:D:401:GEC:OAA	2:D:401:GEC:CAM	2.13	0.95
1:D:266:MET:HG2	1:A:266:MET:HG2	1.47	0.94
1:B:45:GLY:N	4:B:501:HOH:O	2.03	0.91
2:A:401:GEC:OAA	2:A:401:GEC:CAM	2.18	0.91
2:D:401:GEC:CAM	2:D:401:GEC:CAK	2.53	0.86
2:C:401:GEC:OAA	2:C:401:GEC:CAM	2.23	0.85
1:A:145:MET:HE2	1:A:145:MET:HA	1.59	0.84
2:A:401:GEC:CAM	2:A:401:GEC:CAK	2.56	0.84
1:B:84:VAL:HG11	1:B:213:LEU:HD13	1.60	0.84
2:C:401:GEC:CAM	2:C:401:GEC:CAK	2.56	0.83
1:A:201:ASP:O	1:A:205:ILE:HD12	1.79	0.82
1:C:309:MET:HE3	1:C:312:TYR:HB3	1.62	0.81
1:D:263:ILE:HA	1:D:266:MET:HE2	1.64	0.79
1:C:263:ILE:HA	1:C:266:MET:HE2	1.63	0.78
1:C:171:ALA:HB1	1:C:309:MET:HE2	1.65	0.78
1:A:92:VAL:HG21	1:A:95:ARG:HD3	1.67	0.77
1:C:283:GLU:OE2	4:C:501:HOH:O	2.03	0.77
1:A:207:LYS:HD3	1:A:304:VAL:HG22	1.67	0.76
1:A:127:PRO:HB2	1:A:145:MET:HE3	1.66	0.75
1:A:148:ARG:HD3	1:A:160:TYR:CZ	2.22	0.74

Continued on next page...

Continued from previous page...

Atom-1	Atom-2	Interatomic distance (Å)	Clash overlap (Å)
1:D:203:ASP:O	1:D:207:LYS:HG3	1.87	0.74
1:C:266:MET:HG3	1:B:266:MET:HE3	1.70	0.72
1:B:140:THR:HG21	4:B:553:HOH:O	1.90	0.72
2:B:401:GEC:OAF	4:B:502:HOH:O	2.08	0.71
1:C:265:GLN:HB2	1:B:266:MET:HE1	1.70	0.71
1:D:47:GLU:OE2	4:D:501:HOH:O	2.07	0.71
1:A:92:VAL:CG2	1:A:95:ARG:HB2	2.20	0.71
1:A:202:GLU:HA	1:A:205:ILE:HD13	1.73	0.69
1:D:267:GLU:OE2	4:D:502:HOH:O	2.11	0.69
1:D:44:ILE:HG22	1:D:44:ILE:O	1.93	0.68
1:B:248:GLU:OE1	4:B:504:HOH:O	2.12	0.68
1:B:314:ARG:O	4:B:503:HOH:O	2.10	0.68
2:D:401:GEC:CAK	2:D:401:GEC:CAQ	2.71	0.68
1:D:239:GLN:O	1:D:243:LYS:HG3	1.94	0.68
1:A:177:MET:O	1:A:178:VAL:HG22	1.93	0.67
1:C:177:MET:O	1:C:178:VAL:HG22	1.92	0.67
1:B:133:ALA:O	1:B:138:ARG:HD2	1.95	0.67
2:A:401:GEC:CAK	2:A:401:GEC:CAQ	2.74	0.66
2:C:401:GEC:CAK	2:C:401:GEC:CAQ	2.74	0.65
1:D:266:MET:HE1	1:D:274:ILE:HD12	1.77	0.65
1:B:177:MET:O	1:B:178:VAL:HG12	1.97	0.65
1:C:34:HIS:O	4:C:502:HOH:O	2.14	0.64
1:D:267:GLU:HG2	1:A:267:GLU:HG2	1.79	0.64
1:A:236:GLU:OE2	4:A:501:HOH:O	2.15	0.64
1:C:186:LYS:HD2	1:C:250:GLU:HB3	1.81	0.62
1:A:127:PRO:HD2	1:A:148:ARG:NH2	2.14	0.62
1:A:166:PHE:H	3:A:402:NDP:H72N	1.44	0.62
1:B:149:GLN:HA	1:B:152:GLU:OE1	1.98	0.62
1:B:47:GLU:HG3	4:B:501:HOH:O	1.97	0.62
1:D:12:VAL:HG13	1:D:84:VAL:HG23	1.82	0.62
1:B:149:GLN:O	1:B:152:GLU:OE1	2.17	0.62
1:C:178:VAL:CA	1:D:46:LEU:HD11	2.25	0.62
1:C:265:GLN:CB	1:B:266:MET:HE1	2.29	0.61
1:C:266:MET:HE1	1:C:274:ILE:HD12	1.82	0.61
1:C:171:ALA:CB	1:C:309:MET:HE2	2.31	0.61
1:A:303:ASP:N	1:A:303:ASP:OD1	2.33	0.61
1:A:10:THR:N	4:A:510:HOH:O	2.33	0.60
1:A:266:MET:HE1	1:A:274:ILE:CD1	2.31	0.60
1:B:27:ARG:NH2	4:B:508:HOH:O	2.34	0.60
1:B:134:LEU:CD1	1:B:134:LEU:H	2.14	0.60
1:B:166:PHE:H	3:B:402:NDP:H72N	1.50	0.60

Continued on next page...

Continued from previous page...

Atom-1	Atom-2	Interatomic distance (Å)	Clash overlap (Å)
1:B:92:VAL:HG21	1:B:95:ARG:HD3	1.84	0.59
1:D:63:ARG:NH1	4:D:507:HOH:O	2.36	0.59
1:A:266:MET:HE1	1:A:274:ILE:HD13	1.85	0.59
1:D:177:MET:O	1:D:178:VAL:HG22	2.02	0.59
1:C:44:ILE:O	1:C:44:ILE:HG13	2.03	0.58
1:A:125:MET:HE2	1:A:130:MET:HE2	1.85	0.58
1:A:200:ALA:CB	1:A:205:ILE:HD11	2.34	0.57
1:B:109:ILE:HG22	1:B:156:ILE:HD12	1.85	0.57
1:B:189:ILE:HD12	1:B:189:ILE:N	2.20	0.57
1:A:303:ASP:OD2	4:A:502:HOH:O	2.16	0.57
1:C:166:PHE:H	3:C:402:NDP:H72N	1.52	0.56
1:B:263:ILE:O	1:B:266:MET:HG3	2.05	0.56
1:B:166:PHE:CD2	3:B:402:NDP:H41N	2.41	0.56
1:D:266:MET:HE1	1:D:274:ILE:CD1	2.36	0.56
1:D:12:VAL:HG22	1:D:84:VAL:HG22	1.88	0.55
1:D:243:LYS:HE2	4:D:670:HOH:O	2.05	0.55
1:A:134:LEU:HD13	1:A:135:PRO:CD	2.36	0.55
1:C:309:MET:HE1	1:C:312:TYR:CD2	2.42	0.55
1:B:296:GLU:O	1:B:300:LEU:HD22	2.06	0.55
1:B:296:GLU:O	1:B:300:LEU:CD2	2.55	0.55
1:A:30:LEU:HD13	1:A:60:LEU:HB3	1.87	0.55
1:B:92:VAL:HG22	1:B:95:ARG:HB2	1.88	0.54
1:A:134:LEU:HD13	1:A:135:PRO:HD2	1.89	0.54
1:A:69:PHE:CD1	3:A:402:NDP:H2A	2.43	0.54
1:B:134:LEU:H	1:B:134:LEU:HD13	1.73	0.53
1:B:125:MET:HE1	1:B:130:MET:HE2	1.89	0.53
1:A:200:ALA:HB3	1:A:205:ILE:HD11	1.89	0.53
1:A:92:VAL:CG2	1:A:95:ARG:HD3	2.38	0.53
1:C:309:MET:CE	1:C:312:TYR:HB3	2.34	0.53
1:D:166:PHE:H	3:D:402:NDP:H72N	1.55	0.53
1:A:95:ARG:O	1:A:96:SER:HB3	2.07	0.53
1:D:146:GLU:HA	1:D:149:GLN:NE2	2.24	0.52
1:A:92:VAL:HG22	1:A:95:ARG:HB2	1.92	0.52
1:A:196:LYS:HE3	1:A:231:VAL:HG12	1.91	0.52
2:D:401:GEC:OAB	3:D:402:NDP:H42N	2.10	0.52
1:A:301:TYR:HA	4:A:521:HOH:O	2.09	0.52
1:B:92:VAL:CG2	1:B:95:ARG:HD3	2.39	0.51
1:C:51:VAL:O	1:C:55:LEU:HD22	2.10	0.51
1:A:148:ARG:HD3	1:A:160:TYR:CE2	2.44	0.51
1:A:211:LYS:NZ	4:A:502:HOH:O	2.36	0.51
1:C:49:GLU:OE2	4:C:503:HOH:O	2.19	0.51

Continued on next page...

Continued from previous page...

Atom-1	Atom-2	Interatomic distance (Å)	Clash overlap (Å)
1:C:184:LYS:HG3	4:C:559:HOH:O	2.11	0.51
1:B:44:ILE:O	1:B:44:ILE:HG13	2.10	0.51
1:C:24:ARG:NE	4:C:506:HOH:O	2.31	0.50
1:A:165:CYS:HB3	1:A:170:PHE:CD2	2.46	0.50
1:A:311:ASP:OD1	4:A:503:HOH:O	2.20	0.50
1:C:42:PRO:HD2	1:C:43:GLU:CD	2.36	0.50
1:C:51:VAL:O	1:C:55:LEU:CD2	2.60	0.50
1:B:92:VAL:CG2	1:B:95:ARG:HB2	2.41	0.50
1:B:10:THR:OG1	1:B:214:ASN:ND2	2.45	0.50
1:D:84:VAL:HG21	1:D:213:LEU:HD13	1.94	0.50
1:B:117:ARG:HD3	1:B:159:THR:OG1	2.12	0.50
1:B:125:MET:HG3	2:B:401:GEC:OAD	2.12	0.50
1:B:146:GLU:OE1	4:B:505:HOH:O	2.19	0.49
1:C:186:LYS:CD	1:C:250:GLU:HB3	2.41	0.49
1:A:105:LEU:HD12	1:A:105:LEU:O	2.13	0.49
1:B:125:MET:CE	1:B:130:MET:HE2	2.43	0.49
1:B:317:LEU:N	4:B:503:HOH:O	2.45	0.48
1:C:13:LEU:HB2	1:C:82:VAL:HG11	1.95	0.48
1:C:77:SER:O	1:C:81:LEU:HD22	2.12	0.48
1:B:84:VAL:HG23	1:B:117:ARG:HB3	1.95	0.48
1:C:127:PRO:N	1:C:128:PRO:HD2	2.28	0.48
1:A:13:LEU:HB2	1:A:82:VAL:HG21	1.96	0.48
1:A:23:LYS:NZ	4:A:515:HOH:O	2.46	0.48
1:D:12:VAL:HG22	1:D:84:VAL:CG2	2.43	0.48
1:A:65:VAL:HG23	1:A:65:VAL:O	2.14	0.47
1:A:125:MET:HE3	1:A:285:CYS:SG	2.54	0.47
1:C:50:LYS:NZ	3:C:402:NDP:O3X	2.44	0.47
1:A:310:ASP:OD2	4:A:503:HOH:O	2.20	0.47
1:B:12:VAL:HG22	1:B:84:VAL:HG12	1.95	0.47
2:C:401:GEC:OAB	3:C:402:NDP:H42N	2.14	0.47
1:D:125:MET:O	1:D:127:PRO:HD3	2.15	0.47
1:B:296:GLU:C	1:B:300:LEU:HD23	2.40	0.47
1:C:207:LYS:HD2	1:C:211:LYS:HE2	1.97	0.46
1:A:134:LEU:HD13	1:A:135:PRO:N	2.30	0.46
1:A:134:LEU:HD12	1:A:135:PRO:O	2.14	0.46
1:B:127:PRO:HD2	1:B:148:ARG:NH2	2.30	0.46
1:C:186:LYS:NZ	1:C:250:GLU:OE2	2.44	0.46
1:D:111:GLU:OE2	4:D:504:HOH:O	2.21	0.46
1:C:42:PRO:HD2	1:C:43:GLU:OE2	2.16	0.46
1:D:129:ARG:C	1:D:130:MET:HE2	2.41	0.46
1:A:145:MET:HA	1:A:145:MET:CE	2.37	0.46

Continued on next page...

Continued from previous page...

Atom-1	Atom-2	Interatomic distance (Å)	Clash overlap (Å)
2:D:401:GEC:CAL	3:D:402:NDP:H42N	2.46	0.46
1:D:12:VAL:HG13	1:D:84:VAL:CG2	2.46	0.45
1:D:310:ASP:OD1	1:D:311:ASP:N	2.47	0.45
1:A:92:VAL:O	1:A:92:VAL:HG23	2.16	0.45
1:B:165:CYS:HB3	1:B:170:PHE:CD2	2.51	0.45
1:A:11:ARG:O	1:A:82:VAL:HG13	2.16	0.45
1:B:149:GLN:C	1:B:152:GLU:OE1	2.59	0.45
1:B:189:ILE:HD13	1:B:251:LYS:HB3	1.97	0.45
1:B:230:ASN:C	1:B:232:LEU:HD13	2.42	0.45
1:D:37:TYR:CZ	1:D:63:ARG:HD3	2.52	0.45
1:B:199:PHE:O	1:B:230:ASN:HB3	2.16	0.45
1:A:35:GLU:HG2	1:A:37:TYR:CE2	2.51	0.45
1:B:12:VAL:HG22	1:B:84:VAL:CG1	2.46	0.45
1:C:309:MET:HE3	1:C:309:MET:HA	1.98	0.45
1:B:80:LYS:HD2	1:B:80:LYS:O	2.17	0.44
1:D:42:PRO:HG2	1:D:43:GLU:OE2	2.18	0.44
1:C:77:SER:O	1:C:81:LEU:CD2	2.65	0.44
1:A:127:PRO:N	1:A:128:PRO:HD2	2.32	0.44
1:B:50:LYS:NZ	3:B:402:NDP:O3X	2.47	0.44
2:B:401:GEC:CAJ	3:B:402:NDP:H42N	2.47	0.44
1:A:166:PHE:CD2	3:A:402:NDP:H41N	2.52	0.44
1:D:37:TYR:CE1	1:D:63:ARG:HD3	2.53	0.44
1:D:69:PHE:HA	1:D:75:LEU:HD11	2.00	0.43
1:A:92:VAL:HG23	1:A:95:ARG:HB2	1.99	0.43
1:D:19:GLY:HA3	4:D:564:HOH:O	2.18	0.43
1:A:71:ASP:O	1:A:74:SER:OG	2.28	0.43
1:B:293:GLU:HB3	1:B:299:SER:OG	2.17	0.43
2:B:401:GEC:CAQ	2:B:401:GEC:CAK	2.96	0.43
1:B:189:ILE:CD1	1:B:251:LYS:HB3	2.49	0.43
1:B:259:PHE:CE2	1:B:274:ILE:HG23	2.53	0.43
1:B:19:GLY:HA3	3:B:402:NDP:H52A	2.01	0.43
1:B:23:LYS:HE2	1:B:53:LEU:HD21	2.01	0.43
1:C:309:MET:HE1	1:C:312:TYR:CG	2.53	0.43
1:D:59:LYS:O	1:D:59:LYS:HG3	2.19	0.43
1:B:181:LEU:HB3	1:B:182:PRO:HD2	2.00	0.43
1:C:290:GLU:OE2	1:C:290:GLU:HA	2.18	0.43
1:D:127:PRO:N	1:D:128:PRO:HD2	2.34	0.43
1:D:309:MET:HE2	1:D:309:MET:HA	2.01	0.43
1:A:21:ILE:HG22	3:A:402:NDP:H51N	2.00	0.43
1:A:154:ALA:HB2	4:A:559:HOH:O	2.19	0.43
1:D:130:MET:HE1	1:D:285:CYS:HB2	2.01	0.42

Continued on next page...

Continued from previous page...

Atom-1	Atom-2	Interatomic distance (Å)	Clash overlap (Å)
1:B:127:PRO:N	1:B:128:PRO:HD2	2.34	0.42
1:C:19:GLY:HA3	4:C:589:HOH:O	2.19	0.42
1:A:19:GLY:HA3	3:A:402:NDP:H52A	2.02	0.42
1:C:310:ASP:O	1:C:314:ARG:HG3	2.18	0.42
1:B:296:GLU:C	1:B:300:LEU:CD2	2.92	0.42
1:B:42:PRO:HG3	1:B:68:SER:HB2	2.00	0.42
1:B:125:MET:HE3	1:B:130:MET:SD	2.60	0.42
1:B:10:THR:HG22	1:B:11:ARG:N	2.34	0.42
1:B:110:LYS:HB2	1:B:154:ALA:HB1	2.02	0.42
1:B:235:LEU:HD12	1:B:235:LEU:HA	1.86	0.42
1:C:78:ALA:HA	1:C:81:LEU:HD23	2.02	0.42
2:C:401:GEC:CAL	3:C:402:NDP:H42N	2.50	0.41
1:A:299:SER:O	1:A:302:PRO:HD3	2.19	0.41
1:B:177:MET:C	1:B:178:VAL:HG12	2.45	0.41
1:A:82:VAL:CG1	1:A:83:ASP:N	2.83	0.41
1:B:54:PHE:O	1:B:58:LYS:HG3	2.19	0.41
1:A:133:ALA:O	1:A:138:ARG:HD2	2.20	0.41
1:D:122:GLU:O	1:D:144:LYS:NZ	2.52	0.41
1:B:231:VAL:C	1:B:232:LEU:HD12	2.46	0.41
1:B:300:LEU:HD22	1:B:300:LEU:N	2.35	0.41
1:A:310:ASP:O	1:A:314:ARG:HG3	2.21	0.41
1:C:69:PHE:HA	1:C:75:LEU:HD11	2.02	0.41
1:D:129:ARG:HB2	1:D:130:MET:HE2	2.02	0.41
1:A:88:ALA:O	3:A:402:NDP:H51A	2.19	0.41
1:A:300:LEU:O	1:A:302:PRO:HD2	2.21	0.41
1:A:41:ARG:HA	1:A:67:GLY:O	2.21	0.41
1:A:127:PRO:N	1:A:128:PRO:CD	2.83	0.41
1:D:19:GLY:HA3	3:D:402:NDP:H52A	2.02	0.40
1:C:19:GLY:HA3	3:C:402:NDP:H52A	2.03	0.40
1:B:300:LEU:HD22	1:B:300:LEU:H	1.85	0.40
1:D:149:GLN:HE21	1:D:149:GLN:HB2	1.66	0.40
1:D:294:ASP:OD2	1:D:295:GLU:HG2	2.22	0.40
1:C:9:LYS:HG3	4:C:567:HOH:O	2.21	0.40

There are no symmetry-related clashes.

5.3 Torsion angles [i](#)

5.3.1 Protein backbone [i](#)

In the following table, the Percentiles column shows the percent Ramachandran outliers of the chain as a percentile score with respect to all X-ray entries followed by that with respect to entries of similar resolution.

The Analysed column shows the number of residues for which the backbone conformation was analysed, and the total number of residues.

Mol	Chain	Analysed	Favoured	Allowed	Outliers	Percentiles	
1	A	306/317 (96%)	295 (96%)	10 (3%)	1 (0%)	36	35
1	B	307/317 (97%)	298 (97%)	9 (3%)	0	100	100
1	C	307/317 (97%)	297 (97%)	9 (3%)	1 (0%)	36	35
1	D	307/317 (97%)	293 (95%)	12 (4%)	2 (1%)	18	14
All	All	1227/1268 (97%)	1183 (96%)	40 (3%)	4 (0%)	36	35

All (4) Ramachandran outliers are listed below:

Mol	Chain	Res	Type
1	D	44	ILE
1	A	96	SER
1	C	178	VAL
1	D	178	VAL

5.3.2 Protein sidechains [i](#)

In the following table, the Percentiles column shows the percent sidechain outliers of the chain as a percentile score with respect to all X-ray entries followed by that with respect to entries of similar resolution.

The Analysed column shows the number of residues for which the sidechain conformation was analysed, and the total number of residues.

Mol	Chain	Analysed	Rotameric	Outliers	Percentiles	
1	A	262/270 (97%)	261 (100%)	1 (0%)	84	89
1	B	263/270 (97%)	261 (99%)	2 (1%)	73	80
1	C	263/270 (97%)	262 (100%)	1 (0%)	84	89
1	D	263/270 (97%)	261 (99%)	2 (1%)	73	80
All	All	1051/1080 (97%)	1045 (99%)	6 (1%)	78	85

All (6) residues with a non-rotameric sidechain are listed below:

Mol	Chain	Res	Type
1	C	196	LYS
1	D	53	LEU
1	D	248	GLU
1	A	239	GLN
1	B	134	LEU
1	B	266	MET

Sometimes sidechains can be flipped to improve hydrogen bonding and reduce clashes. All (7) such sidechains are listed below:

Mol	Chain	Res	Type
1	C	40	GLN
1	C	265	GLN
1	D	149	GLN
1	A	143	GLN
1	B	40	GLN
1	B	194	ASN
1	B	214	ASN

5.3.3 RNA [i](#)

There are no RNA molecules in this entry.

5.4 Non-standard residues in protein, DNA, RNA chains [i](#)

There are no non-standard protein/DNA/RNA residues in this entry.

5.5 Carbohydrates [i](#)

There are no oligosaccharides in this entry.

5.6 Ligand geometry [i](#)

8 ligands are modelled in this entry.

In the following table, the Counts columns list the number of bonds (or angles) for which Mogul statistics could be retrieved, the number of bonds (or angles) that are observed in the model and the number of bonds (or angles) that are defined in the Chemical Component Dictionary. The Link column lists molecule types, if any, to which the group is linked. The Z score for a bond length (or angle) is the number of standard deviations the observed value is removed from the

expected value. A bond length (or angle) with $|Z| > 2$ is considered an outlier worth inspection. RMSZ is the root-mean-square of all Z scores of the bond lengths (or angles).

Mol	Type	Chain	Res	Link	Bond lengths			Bond angles		
					Counts	RMSZ	# Z > 2	Counts	RMSZ	# Z > 2
2	GEC	C	401	-	29,29,29	6.73	11 (37%)	42,42,42	9.49	24 (57%)
2	GEC	A	401	-	29,29,29	6.83	12 (41%)	42,42,42	9.43	25 (59%)
3	NDP	A	402	-	51,52,52	3.24	23 (45%)	71,80,80	2.40	23 (32%)
3	NDP	B	402	-	51,52,52	3.26	21 (41%)	71,80,80	2.63	29 (40%)
3	NDP	C	402	-	51,52,52	2.98	18 (35%)	71,80,80	2.63	26 (36%)
2	GEC	D	401	-	29,29,29	5.97	11 (37%)	42,42,42	9.48	22 (52%)
2	GEC	B	401	-	29,29,29	3.04	10 (34%)	42,42,42	8.08	18 (42%)
3	NDP	D	402	-	51,52,52	3.06	17 (33%)	71,80,80	2.50	26 (36%)

In the following table, the Chirals column lists the number of chiral outliers, the number of chiral centers analysed, the number of these observed in the model and the number defined in the Chemical Component Dictionary. Similar counts are reported in the Torsion and Rings columns. '-' means no outliers of that kind were identified.

Mol	Type	Chain	Res	Link	Chirals	Torsions	Rings
2	GEC	C	401	-	-	3/12/34/34	0/4/4/4
2	GEC	A	401	-	-	3/12/34/34	0/4/4/4
3	NDP	A	402	-	-	3/34/77/77	0/5/5/5
3	NDP	B	402	-	-	4/34/77/77	0/5/5/5
3	NDP	C	402	-	-	7/34/77/77	0/5/5/5
2	GEC	D	401	-	-	3/12/34/34	0/4/4/4
2	GEC	B	401	-	-	0/12/34/34	0/4/4/4
3	NDP	D	402	-	-	4/34/77/77	0/5/5/5

All (123) bond length outliers are listed below:

Mol	Chain	Res	Type	Atoms	Z	Observed(Å)	Ideal(Å)
2	C	401	GEC	OAA-CAI	27.56	1.90	1.43
2	A	401	GEC	OAA-CAI	26.10	1.87	1.43
2	D	401	GEC	OAA-CAI	24.00	1.84	1.43
2	C	401	GEC	CAG-CAI	-13.05	1.28	1.54
2	A	401	GEC	CAG-CAI	-12.26	1.29	1.54
2	D	401	GEC	CAG-CAI	-11.78	1.30	1.54
2	A	401	GEC	OAB-CAL	-11.50	1.19	1.43
2	C	401	GEC	OAB-CAL	-10.76	1.20	1.43
2	A	401	GEC	OAB-CAJ	10.68	1.61	1.43

Continued on next page...

Continued from previous page...

Mol	Chain	Res	Type	Atoms	Z	Observed(Å)	Ideal(Å)
2	D	401	GEC	OAB-CAL	-9.50	1.23	1.43
2	B	401	GEC	CAH-CAJ	9.44	1.73	1.54
3	A	402	NDP	O4B-C1B	8.84	1.62	1.42
3	A	402	NDP	O4D-C1D	8.80	1.62	1.42
3	B	402	NDP	C2B-C1B	-8.72	1.31	1.53
2	A	401	GEC	OAA-CAK	8.43	1.62	1.43
2	B	401	GEC	OAB-CAJ	-8.38	1.29	1.43
3	B	402	NDP	O4B-C1B	8.35	1.61	1.42
3	D	402	NDP	O4B-C1B	8.16	1.60	1.42
3	A	402	NDP	C2B-C1B	-8.10	1.33	1.53
3	C	402	NDP	C2B-C1B	-8.07	1.33	1.53
2	C	401	GEC	OAB-CAJ	8.03	1.57	1.43
2	A	401	GEC	CAG-CAH	-7.94	1.35	1.55
3	D	402	NDP	O4D-C1D	7.91	1.60	1.42
3	C	402	NDP	O4B-C1B	7.61	1.59	1.42
2	D	401	GEC	OAA-CAK	7.59	1.60	1.43
3	C	402	NDP	O4D-C1D	7.58	1.59	1.42
3	B	402	NDP	O4D-C1D	7.34	1.59	1.42
3	D	402	NDP	C2B-C1B	-7.18	1.35	1.53
2	C	401	GEC	OAA-CAK	7.17	1.59	1.43
3	D	402	NDP	C2D-C1D	-6.82	1.32	1.53
2	C	401	GEC	CAG-CAH	-6.74	1.38	1.55
3	A	402	NDP	C2D-C1D	-6.73	1.32	1.53
3	C	402	NDP	C2D-C1D	-6.68	1.32	1.53
2	A	401	GEC	CAM-CAI	-6.56	1.40	1.51
3	D	402	NDP	C6N-C5N	6.54	1.53	1.33
3	A	402	NDP	C6N-C5N	6.46	1.53	1.33
3	C	402	NDP	C6N-C5N	6.35	1.52	1.33
3	B	402	NDP	C6N-C5N	6.29	1.52	1.33
2	D	401	GEC	CAG-CAH	-6.11	1.40	1.55
2	A	401	GEC	CAN-CAJ	-5.98	1.40	1.51
3	B	402	NDP	C2D-C1D	-5.70	1.35	1.53
2	D	401	GEC	CAM-CAI	-5.69	1.41	1.51
3	C	402	NDP	PN-O3	5.64	1.65	1.59
3	A	402	NDP	C6A-N6A	5.61	1.48	1.34
3	D	402	NDP	PA-O3	5.53	1.65	1.59
3	A	402	NDP	C2N-C3N	5.44	1.50	1.35
2	A	401	GEC	CAH-CAJ	5.38	1.65	1.54
2	D	401	GEC	CAH-CAJ	5.20	1.64	1.54
3	D	402	NDP	O4D-C4D	-5.16	1.33	1.45
3	B	402	NDP	PN-O3	5.14	1.65	1.59
3	B	402	NDP	C6A-N6A	5.10	1.47	1.34

Continued on next page...

Continued from previous page...

Mol	Chain	Res	Type	Atoms	Z	Observed(Å)	Ideal(Å)
2	B	401	GEC	OAA-CAI	5.09	1.52	1.43
3	B	402	NDP	PA-O3	5.04	1.64	1.59
3	B	402	NDP	O4D-C4D	-5.03	1.33	1.45
2	D	401	GEC	CAN-CAJ	-4.99	1.42	1.51
2	C	401	GEC	CAN-CAJ	-4.96	1.42	1.51
3	D	402	NDP	C5A-C4A	-4.87	1.30	1.39
2	C	401	GEC	CAH-CAJ	4.80	1.64	1.54
2	C	401	GEC	CAM-CAI	-4.78	1.43	1.51
3	B	402	NDP	C2N-C3N	4.73	1.48	1.35
3	B	402	NDP	O4B-C4B	-4.72	1.34	1.45
3	C	402	NDP	O4D-C4D	-4.69	1.34	1.45
2	D	401	GEC	OAB-CAJ	4.68	1.51	1.43
3	D	402	NDP	C6A-N6A	4.59	1.45	1.34
2	C	401	GEC	CAL-CAG	-4.38	1.44	1.53
3	C	402	NDP	C6A-N6A	4.31	1.45	1.34
3	C	402	NDP	C5A-C4A	-4.31	1.31	1.39
2	B	401	GEC	CAM-CAI	-4.13	1.44	1.51
3	B	402	NDP	C5A-C4A	-3.96	1.32	1.39
2	A	401	GEC	CAL-CAG	-3.90	1.45	1.53
3	D	402	NDP	PN-O3	3.80	1.63	1.59
3	B	402	NDP	C7N-N7N	3.79	1.44	1.33
3	C	402	NDP	C2N-C3N	3.73	1.45	1.35
3	D	402	NDP	C2N-C3N	3.72	1.45	1.35
3	C	402	NDP	O4B-C4B	-3.72	1.36	1.45
3	A	402	NDP	PN-O3	3.67	1.63	1.59
2	B	401	GEC	CAG-CAH	3.60	1.63	1.55
3	A	402	NDP	C5A-C4A	-3.57	1.32	1.39
3	D	402	NDP	O4B-C4B	-3.55	1.37	1.45
3	B	402	NDP	C2A-N3A	3.52	1.40	1.33
3	A	402	NDP	C4N-C5N	3.47	1.58	1.49
3	A	402	NDP	C7N-N7N	3.45	1.43	1.33
3	B	402	NDP	C6N-N1N	3.43	1.45	1.37
2	D	401	GEC	CAL-CAG	-3.35	1.46	1.53
3	A	402	NDP	C6N-N1N	3.28	1.45	1.37
3	A	402	NDP	O4D-C4D	-3.26	1.37	1.45
3	A	402	NDP	C4N-C3N	3.23	1.56	1.50
3	A	402	NDP	O4B-C4B	-3.14	1.38	1.45
3	A	402	NDP	C8A-N7A	3.10	1.37	1.31
2	B	401	GEC	CAN-CAJ	-2.93	1.46	1.51
2	B	401	GEC	CAQ-CAU	2.86	1.43	1.38
3	B	402	NDP	C4N-C5N	2.81	1.56	1.49
2	B	401	GEC	CAL-CAG	-2.78	1.47	1.53

Continued on next page...

Continued from previous page...

Mol	Chain	Res	Type	Atoms	Z	Observed(Å)	Ideal(Å)
3	D	402	NDP	C2A-N3A	2.77	1.38	1.33
2	D	401	GEC	CAO-CAM	2.72	1.43	1.39
3	A	402	NDP	O2B-C2B	2.71	1.53	1.44
3	B	402	NDP	C8A-N7A	2.68	1.36	1.31
3	A	402	NDP	C2A-N1A	2.60	1.38	1.33
3	D	402	NDP	C6N-N1N	2.57	1.43	1.37
3	B	402	NDP	O2B-C2B	2.48	1.52	1.44
2	C	401	GEC	CAO-CAM	2.43	1.42	1.39
3	B	402	NDP	O2D-C2D	2.43	1.49	1.43
2	B	401	GEC	CAG-CAI	2.41	1.59	1.54
3	B	402	NDP	C4N-C3N	2.41	1.54	1.50
3	C	402	NDP	C2A-N3A	2.40	1.38	1.33
2	A	401	GEC	OAC-CAS	2.40	1.41	1.37
3	D	402	NDP	PN-O5D	2.39	1.68	1.59
3	C	402	NDP	PA-O3	2.38	1.62	1.59
3	A	402	NDP	O2D-C2D	2.38	1.48	1.43
3	C	402	NDP	O2D-C2D	2.38	1.48	1.43
3	C	402	NDP	C4N-C5N	2.34	1.55	1.49
3	A	402	NDP	C3B-C2B	2.33	1.58	1.53
3	B	402	NDP	C3B-C2B	2.33	1.58	1.53
3	C	402	NDP	C3B-C2B	2.30	1.58	1.53
3	C	402	NDP	O2B-C2B	2.30	1.51	1.44
3	D	402	NDP	C8A-N7A	2.25	1.36	1.31
3	A	402	NDP	PA-O5B	2.21	1.68	1.59
2	A	401	GEC	CAO-CAM	2.17	1.42	1.39
2	B	401	GEC	CAK-CAH	2.16	1.57	1.53
3	D	402	NDP	C7N-N7N	2.14	1.39	1.33
3	A	402	NDP	PA-O3	2.10	1.61	1.59
3	A	402	NDP	C5D-C4D	2.04	1.57	1.51
3	C	402	NDP	C6N-N1N	2.04	1.42	1.37

All (193) bond angle outliers are listed below:

Mol	Chain	Res	Type	Atoms	Z	Observed(°)	Ideal(°)
2	B	401	GEC	OAB-CAJ-CAH	-32.75	69.65	104.73
2	C	401	GEC	OAA-CAI-CAG	-27.43	75.35	104.73
2	A	401	GEC	OAA-CAI-CAG	-26.68	76.16	104.73
2	D	401	GEC	OAA-CAI-CAM	-26.51	80.92	110.39
2	C	401	GEC	OAA-CAK-CAH	-26.39	70.30	105.56
2	A	401	GEC	OAA-CAK-CAH	-26.35	70.37	105.56
2	D	401	GEC	OAA-CAI-CAG	-25.97	76.92	104.73
2	A	401	GEC	OAA-CAI-CAM	-24.99	82.61	110.39

Continued on next page...

Continued from previous page...

Mol	Chain	Res	Type	Atoms	Z	Observed(°)	Ideal(°)
2	C	401	GEC	OAA-CAI-CAM	-24.64	83.00	110.39
2	D	401	GEC	OAA-CAK-CAH	-23.49	74.18	105.56
2	D	401	GEC	CAK-CAH-CAJ	23.40	151.91	114.53
2	C	401	GEC	CAK-CAH-CAJ	22.15	149.91	114.53
2	A	401	GEC	CAK-CAH-CAJ	20.41	147.13	114.53
2	B	401	GEC	OAA-CAK-CAH	-20.34	78.39	105.56
2	A	401	GEC	OAB-CAL-CAG	19.38	131.45	105.56
2	D	401	GEC	OAB-CAL-CAG	18.95	130.87	105.56
2	B	401	GEC	CAL-CAG-CAH	-18.64	78.62	103.24
2	C	401	GEC	OAB-CAL-CAG	17.43	128.85	105.56
2	A	401	GEC	CAL-OAB-CAJ	-17.06	71.51	106.43
2	D	401	GEC	CAL-OAB-CAJ	-16.95	71.72	106.43
2	C	401	GEC	CAL-OAB-CAJ	-16.38	72.89	106.43
2	D	401	GEC	CAH-CAG-CAI	14.42	126.72	103.10
2	B	401	GEC	CAH-CAG-CAI	-14.20	79.84	103.10
2	C	401	GEC	CAH-CAG-CAI	13.60	125.38	103.10
2	A	401	GEC	CAH-CAG-CAI	13.40	125.04	103.10
2	B	401	GEC	CAL-CAG-CAI	12.66	134.76	114.53
2	B	401	GEC	CAM-CAI-CAG	-10.91	100.11	115.90
2	C	401	GEC	CAQ-CAM-CAI	10.04	139.37	120.62
2	D	401	GEC	CAQ-CAM-CAI	9.98	139.25	120.62
2	D	401	GEC	CAO-CAM-CAI	-9.47	98.98	119.88
2	B	401	GEC	CAK-CAH-CAG	9.39	115.65	103.24
2	C	401	GEC	CAO-CAM-CAI	-9.23	99.53	119.88
2	A	401	GEC	CAQ-CAM-CAI	9.16	137.73	120.62
2	B	401	GEC	OAB-CAJ-CAN	-8.91	100.49	110.39
2	A	401	GEC	CAO-CAM-CAI	-8.57	100.98	119.88
2	D	401	GEC	CAL-CAG-CAH	-8.03	92.63	103.24
3	D	402	NDP	C5A-C4A-N3A	-7.28	116.69	126.72
3	C	402	NDP	N3A-C2A-N1A	-7.18	117.71	128.58
3	D	402	NDP	N3A-C2A-N1A	-7.15	117.75	128.58
2	A	401	GEC	CAL-CAG-CAI	7.07	125.83	114.53
2	C	401	GEC	CAL-CAG-CAI	7.05	125.80	114.53
3	B	402	NDP	N3A-C2A-N1A	-6.75	118.36	128.58
2	C	401	GEC	CAG-CAH-CAJ	-6.59	92.31	103.10
2	B	401	GEC	OAA-CAI-CAG	6.53	111.73	104.73
3	A	402	NDP	N3A-C2A-N1A	-6.52	118.72	128.58
3	B	402	NDP	O4B-C4B-C3B	-6.48	92.29	105.15
2	B	401	GEC	OAB-CAL-CAG	6.48	114.21	105.56
2	A	401	GEC	CAG-CAH-CAJ	-6.28	92.82	103.10
2	B	401	GEC	CAQ-CAM-CAI	6.26	132.30	120.62
3	C	402	NDP	N6A-C6A-N1A	-6.15	104.69	118.38

Continued on next page...

Continued from previous page...

Mol	Chain	Res	Type	Atoms	Z	Observed(°)	Ideal(°)
2	D	401	GEC	CAG-CAH-CAJ	-6.08	93.15	103.10
2	D	401	GEC	CAL-CAG-CAI	6.05	124.19	114.53
3	A	402	NDP	C5A-C4A-N3A	-5.91	118.58	126.72
3	C	402	NDP	O4B-C4B-C3B	-5.89	93.47	105.15
3	C	402	NDP	O4B-C1B-N9A	-5.85	96.86	108.09
2	C	401	GEC	CAL-CAG-CAH	-5.80	95.58	103.24
2	A	401	GEC	CAL-CAG-CAH	-5.80	95.58	103.24
3	B	402	NDP	C5A-C4A-N3A	-5.68	118.89	126.72
3	C	402	NDP	O3-PA-O1A	-5.60	93.86	110.70
2	D	401	GEC	CAQ-CAM-CAO	-5.36	112.52	118.74
2	C	401	GEC	CAM-CAI-CAG	5.29	123.55	115.90
3	A	402	NDP	N6A-C6A-N1A	-5.20	106.79	118.38
2	B	401	GEC	OAA-CAI-CAM	5.14	116.11	110.39
3	C	402	NDP	C5A-C4A-N3A	-5.14	119.64	126.72
3	D	402	NDP	C2A-N3A-C4A	5.10	124.28	111.83
3	B	402	NDP	N3A-C4A-N9A	5.04	135.74	127.17
3	B	402	NDP	O4D-C1D-N1N	-5.04	98.47	108.08
3	D	402	NDP	N3A-C4A-N9A	4.99	135.66	127.17
3	C	402	NDP	C4A-N9A-C1B	-4.97	115.00	126.63
3	A	402	NDP	N9A-C8A-N7A	-4.95	106.92	113.94
3	B	402	NDP	N9A-C8A-N7A	-4.95	106.92	113.94
3	B	402	NDP	C4A-N9A-C1B	-4.87	115.25	126.63
3	A	402	NDP	C4A-N9A-C1B	-4.66	115.74	126.63
3	C	402	NDP	N9A-C8A-N7A	-4.66	107.33	113.94
3	B	402	NDP	O4B-C1B-N9A	-4.63	99.20	108.09
3	B	402	NDP	O4D-C1D-C2D	-4.62	96.73	106.62
3	A	402	NDP	O4B-C1B-N9A	-4.56	99.34	108.09
2	A	401	GEC	CAM-CAI-CAG	4.53	122.45	115.90
3	B	402	NDP	N6A-C6A-N1A	-4.48	108.41	118.38
2	B	401	GEC	CAO-CAM-CAI	-4.48	110.00	119.88
3	D	402	NDP	N6A-C6A-N1A	-4.47	108.41	118.38
3	D	402	NDP	O3X-P2B-O2X	4.33	124.05	107.80
3	A	402	NDP	C3N-C2N-N1N	-4.33	116.85	123.20
2	B	401	GEC	CAZ-OAD-CAT	-4.26	111.26	117.51
3	D	402	NDP	C4B-O4B-C1B	-4.24	100.10	109.47
3	C	402	NDP	N3A-C4A-N9A	4.17	134.27	127.17
3	A	402	NDP	N3A-C4A-N9A	4.12	134.17	127.17
2	D	401	GEC	CAS-CAO-CAM	4.12	126.22	119.86
3	D	402	NDP	N9A-C8A-N7A	-4.10	108.12	113.94
3	D	402	NDP	C4A-N9A-C1B	-4.06	117.13	126.63
3	A	402	NDP	C1B-N9A-C8A	4.02	136.02	127.09
2	A	401	GEC	OAB-CAJ-CAH	-4.01	100.44	104.73

Continued on next page...

Continued from previous page...

Mol	Chain	Res	Type	Atoms	Z	Observed(°)	Ideal(°)
3	D	402	NDP	O4D-C1D-C2D	-3.97	98.12	106.62
3	C	402	NDP	O4D-C1D-N1N	-3.97	100.52	108.08
2	A	401	GEC	CAQ-CAM-CAO	-3.96	114.14	118.74
3	A	402	NDP	C2A-N3A-C4A	3.94	121.45	111.83
2	C	401	GEC	CAQ-CAM-CAO	-3.93	114.18	118.74
3	B	402	NDP	O3X-P2B-O2B	3.92	121.11	105.85
2	C	401	GEC	CAK-OAA-CAI	-3.86	98.52	106.43
3	D	402	NDP	O4B-C1B-N9A	-3.86	100.68	108.09
2	C	401	GEC	CAS-CAO-CAM	3.83	125.78	119.86
3	B	402	NDP	C2A-N3A-C4A	3.83	121.19	111.83
3	C	402	NDP	C2A-N3A-C4A	3.83	121.17	111.83
3	C	402	NDP	C5A-C6A-N6A	3.80	132.70	123.29
3	C	402	NDP	C1B-N9A-C8A	3.78	135.50	127.09
3	B	402	NDP	C1B-N9A-C8A	3.76	135.45	127.09
3	A	402	NDP	C6N-N1N-C2N	3.75	123.33	119.32
2	B	401	GEC	CAK-CAH-CAJ	3.70	120.44	114.53
3	D	402	NDP	C3N-C2N-N1N	-3.68	117.80	123.20
3	D	402	NDP	C1B-N9A-C8A	3.66	135.22	127.09
2	D	401	GEC	CAO-CAS-CAW	-3.64	116.37	120.04
3	A	402	NDP	C4B-O4B-C1B	-3.58	101.57	109.47
2	A	401	GEC	CAO-CAS-CAW	-3.55	116.47	120.04
3	C	402	NDP	C4A-N9A-C8A	3.53	109.44	105.74
3	C	402	NDP	O2A-PA-O5B	3.52	123.51	107.57
3	D	402	NDP	O3-PN-O1N	-3.49	100.22	110.70
2	A	401	GEC	CAS-CAO-CAM	3.47	125.22	119.86
2	C	401	GEC	OAB-CAJ-CAH	-3.47	101.02	104.73
2	A	401	GEC	CAY-OAC-CAS	3.42	122.53	117.51
2	A	401	GEC	CAK-OAA-CAI	-3.40	99.47	106.43
3	B	402	NDP	C4A-N9A-C8A	3.39	109.30	105.74
3	C	402	NDP	O2B-P2B-O1X	3.36	121.31	109.33
3	A	402	NDP	C5A-C6A-N6A	3.29	131.42	123.29
2	A	401	GEC	CAZ-OAD-CAT	-3.28	112.69	117.51
2	C	401	GEC	CAR-CAV-CAX	-3.25	117.25	120.50
3	B	402	NDP	O2N-PN-O3	3.23	116.00	107.27
3	B	402	NDP	C4B-O4B-C1B	-3.22	102.35	109.47
2	C	401	GEC	CAZ-OAD-CAT	-3.20	112.83	117.51
3	C	402	NDP	C4B-O4B-C1B	-3.17	102.46	109.47
2	D	401	GEC	CAK-OAA-CAI	-3.07	100.15	106.43
3	A	402	NDP	O4B-C4B-C3B	-3.04	99.11	105.15
2	A	401	GEC	CAK-CAH-CAG	2.97	107.17	103.24
3	D	402	NDP	O3D-C3D-C4D	2.96	119.58	111.08
3	C	402	NDP	O2B-C2B-C1B	-2.92	99.77	110.05

Continued on next page...

Continued from previous page...

Mol	Chain	Res	Type	Atoms	Z	Observed(°)	Ideal(°)
2	B	401	GEC	CAU-CAQ-CAM	-2.92	118.27	121.18
2	A	401	GEC	OAC-CAS-CAO	2.92	129.10	124.08
3	D	402	NDP	O4D-C1D-N1N	-2.90	102.56	108.08
3	B	402	NDP	O2B-P2B-O1X	-2.87	99.10	109.33
2	B	401	GEC	CAR-CAN-CAP	-2.87	115.41	118.74
2	B	401	GEC	CAS-CAO-CAM	2.85	124.27	119.86
3	A	402	NDP	C6A-C5A-C4A	2.82	121.03	117.18
3	B	402	NDP	P2B-O2B-C2B	-2.82	115.90	123.43
3	C	402	NDP	C3N-C2N-N1N	-2.79	119.11	123.20
3	B	402	NDP	C3N-C2N-N1N	-2.77	119.13	123.20
3	A	402	NDP	C5A-N7A-C8A	2.77	107.81	103.45
3	B	402	NDP	C6A-C5A-C4A	2.71	120.88	117.18
3	B	402	NDP	O2A-PA-O3	2.68	114.52	107.27
2	C	401	GEC	CAO-CAS-CAW	-2.66	117.36	120.04
3	C	402	NDP	O2B-C2B-C3B	2.65	121.20	111.68
3	C	402	NDP	C3D-C2D-C1D	2.61	106.40	101.46
3	B	402	NDP	C5A-C6A-N6A	2.59	129.69	123.29
3	C	402	NDP	O4D-C1D-C2D	-2.53	101.19	106.62
2	D	401	GEC	CAM-CAI-CAG	2.49	119.50	115.90
3	D	402	NDP	C5A-C6A-N1A	2.49	123.83	117.51
3	D	402	NDP	C6A-C5A-C4A	2.47	120.55	117.18
2	C	401	GEC	OAB-CAJ-CAN	-2.45	107.67	110.39
3	B	402	NDP	O2B-C2B-C1B	-2.43	101.52	110.05
3	B	402	NDP	O4B-C1B-C2B	-2.41	102.43	106.59
2	C	401	GEC	CAQ-CAU-CAW	2.41	122.91	120.50
3	B	402	NDP	O2N-PN-O5D	2.41	118.49	107.57
2	C	401	GEC	CAV-CAR-CAN	2.41	123.59	121.18
3	A	402	NDP	C4A-N9A-C8A	2.37	108.23	105.74
3	D	402	NDP	C3B-C2B-C1B	2.36	107.33	102.81
3	A	402	NDP	O7N-C7N-C3N	2.36	125.34	120.90
2	C	401	GEC	OAE-CAW-CAU	2.35	125.68	119.36
3	C	402	NDP	O3D-C3D-C2D	-2.33	104.34	111.82
3	C	402	NDP	PA-O5B-C5B	-2.33	108.03	121.35
3	B	402	NDP	C6A-C5A-N7A	-2.30	127.66	132.09
3	B	402	NDP	PA-O5B-C5B	-2.29	108.22	121.35
3	A	402	NDP	C4D-O4D-C1D	-2.26	104.47	109.47
3	D	402	NDP	C2B-C3B-C4B	-2.25	97.16	101.99
2	D	401	GEC	OAC-CAS-CAO	2.24	127.94	124.08
2	D	401	GEC	OAE-CAW-CAU	2.24	125.37	119.36
3	B	402	NDP	O2N-PN-O1N	-2.22	102.13	112.44
3	B	402	NDP	C5A-N7A-C8A	2.21	106.93	103.45
3	A	402	NDP	O3D-C3D-C4D	2.20	117.39	111.08

Continued on next page...

Continued from previous page...

Mol	Chain	Res	Type	Atoms	Z	Observed(°)	Ideal(°)
3	D	402	NDP	PA-O5B-C5B	-2.19	108.80	121.35
3	D	402	NDP	C6N-N1N-C2N	2.19	121.66	119.32
3	A	402	NDP	O2X-P2B-O2B	-2.16	97.41	105.85
2	A	401	GEC	OAF-CAX-CAT	-2.16	115.06	120.13
2	A	401	GEC	CAN-CAJ-CAH	2.14	119.00	115.90
3	D	402	NDP	O2B-P2B-O1X	-2.12	101.76	109.33
3	A	402	NDP	O3X-P2B-O2B	2.11	114.06	105.85
2	D	401	GEC	OAF-CAX-CAV	2.09	124.98	119.36
3	C	402	NDP	C5A-N7A-C8A	2.09	106.73	103.45
3	A	402	NDP	C5D-C4D-C3D	-2.08	107.71	115.21
3	D	402	NDP	O2A-PA-O1A	2.08	122.11	112.44
3	D	402	NDP	O5D-PN-O1N	2.08	117.16	108.94
2	D	401	GEC	OAE-CAW-CAS	-2.04	115.34	120.13
3	D	402	NDP	O3X-P2B-O1X	-2.02	102.94	110.83
2	D	401	GEC	CAQ-CAU-CAW	2.02	122.52	120.50
2	A	401	GEC	OAF-CAX-CAV	2.01	124.75	119.36
3	C	402	NDP	C5A-C6A-N1A	2.01	122.60	117.51

There are no chirality outliers.

All (27) torsion outliers are listed below:

Mol	Chain	Res	Type	Atoms
3	C	402	NDP	C3B-C2B-O2B-P2B
3	C	402	NDP	C1B-C2B-O2B-P2B
2	A	401	GEC	CAG-CAI-CAM-CAO
2	C	401	GEC	CAG-CAI-CAM-CAO
2	D	401	GEC	CAG-CAI-CAM-CAO
3	D	402	NDP	O4D-C1D-N1N-C2N
2	D	401	GEC	CAG-CAI-CAM-CAQ
2	C	401	GEC	OAA-CAI-CAM-CAQ
2	C	401	GEC	CAG-CAI-CAM-CAQ
3	C	402	NDP	O4D-C1D-N1N-C2N
3	B	402	NDP	O4D-C1D-N1N-C2N
2	A	401	GEC	CAG-CAI-CAM-CAQ
3	B	402	NDP	C5D-O5D-PN-O2N
2	D	401	GEC	OAA-CAI-CAM-CAQ
3	A	402	NDP	O4D-C1D-N1N-C2N
2	A	401	GEC	OAA-CAI-CAM-CAQ
3	B	402	NDP	C2D-C1D-N1N-C2N
3	C	402	NDP	C2B-O2B-P2B-O1X
3	D	402	NDP	C2B-O2B-P2B-O1X
3	D	402	NDP	C2D-C1D-N1N-C2N

Continued on next page...

Continued from previous page...

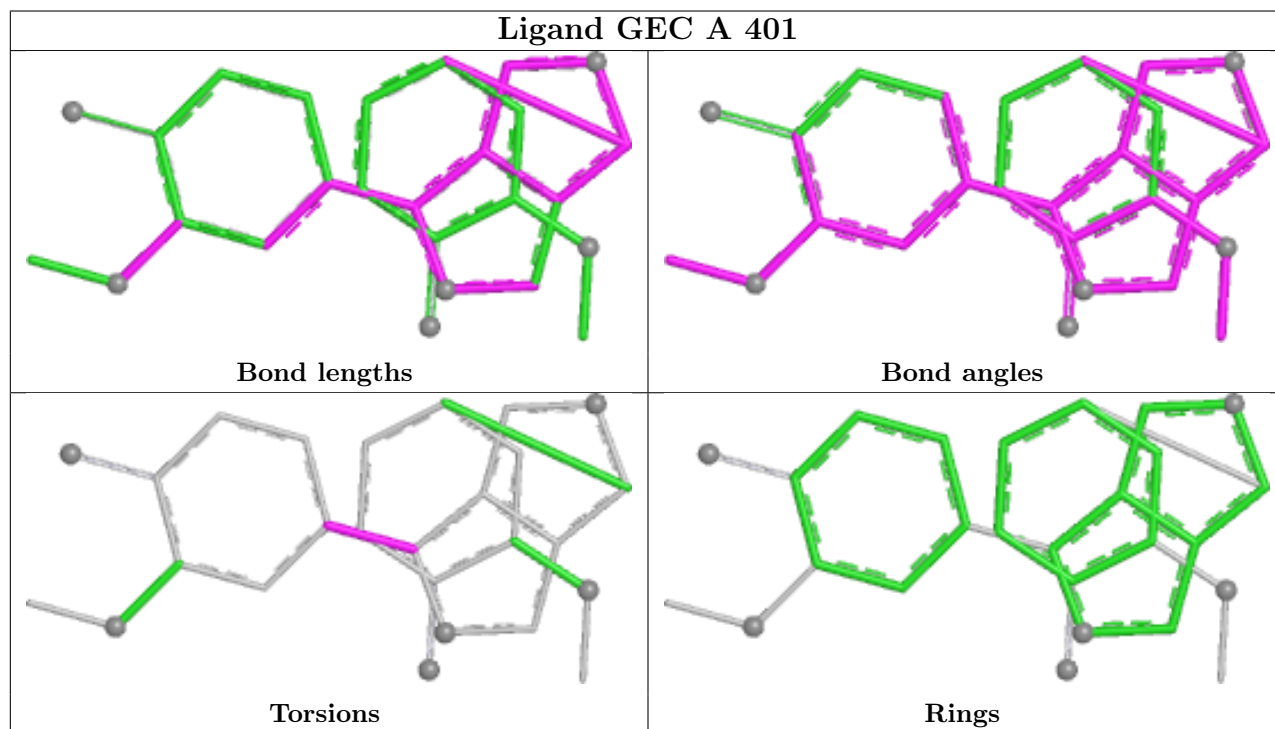
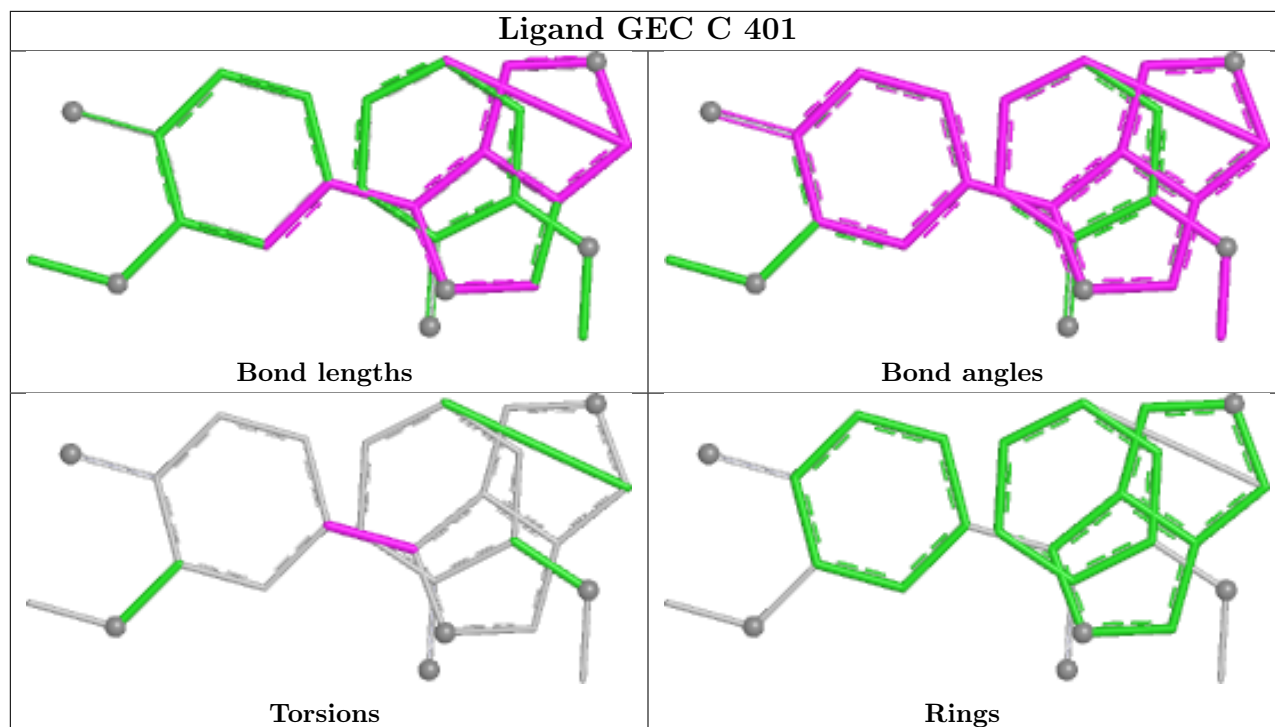
Mol	Chain	Res	Type	Atoms
3	A	402	NDP	C2D-C1D-N1N-C2N
3	C	402	NDP	C2D-C1D-N1N-C2N
3	C	402	NDP	PN-O3-PA-O2A
3	C	402	NDP	C2B-O2B-P2B-O3X
3	D	402	NDP	C2B-O2B-P2B-O2X
3	A	402	NDP	C2D-C1D-N1N-C6N
3	B	402	NDP	C2D-C1D-N1N-C6N

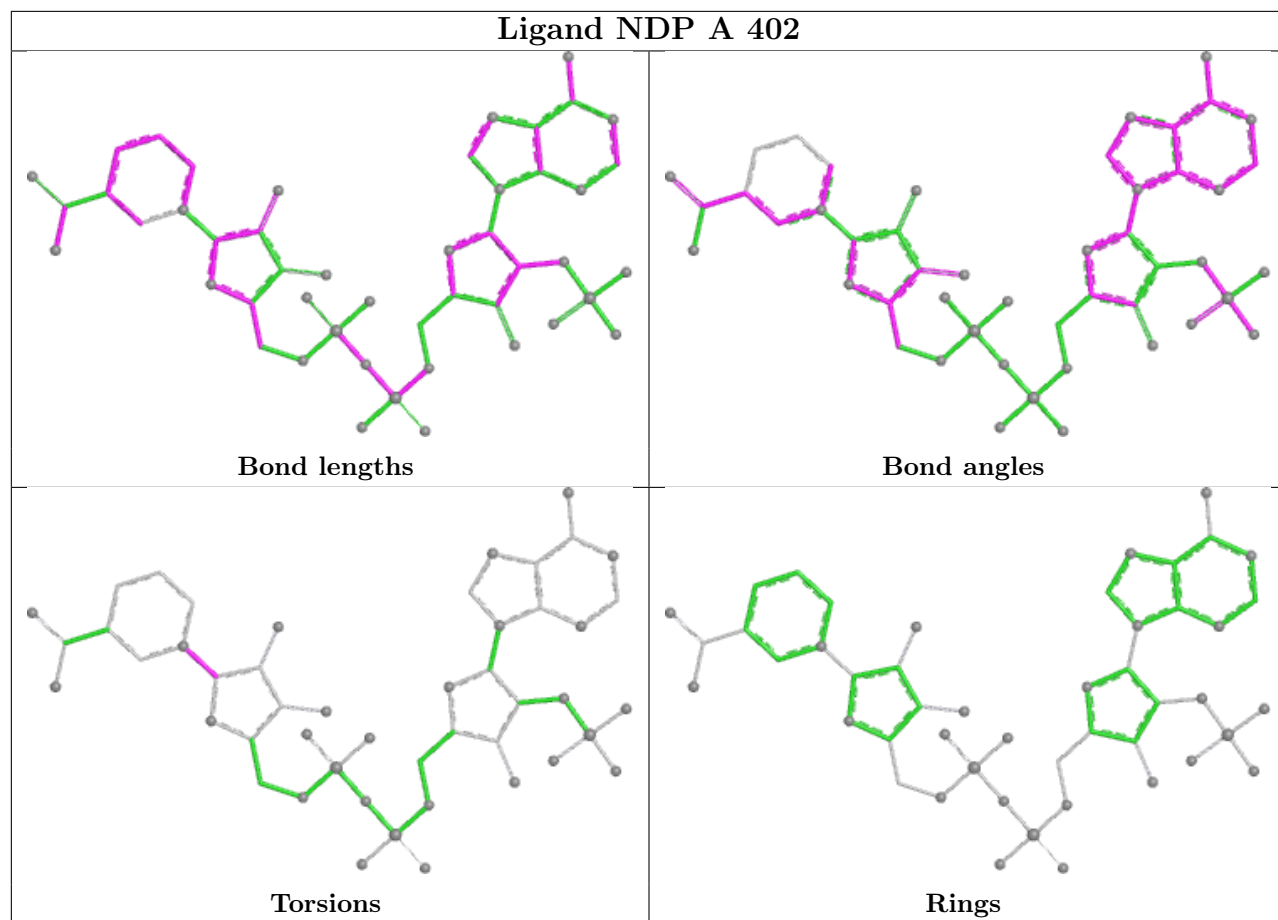
There are no ring outliers.

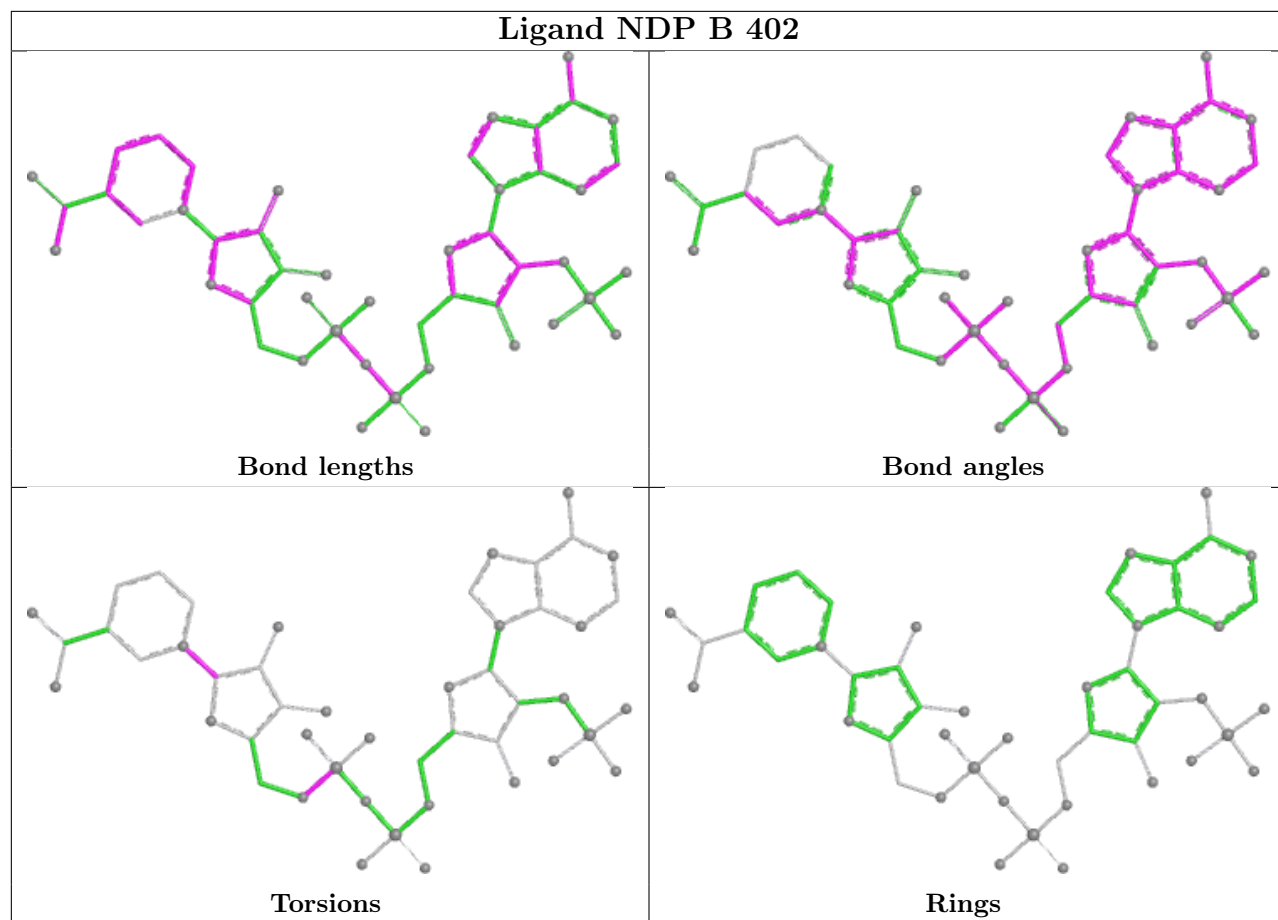
8 monomers are involved in 35 short contacts:

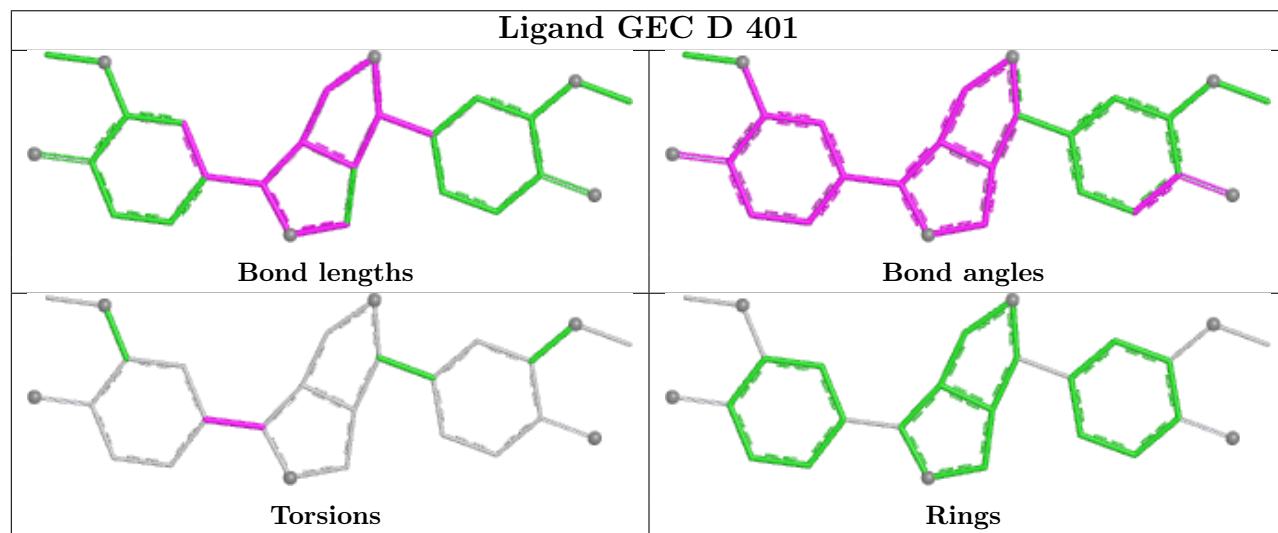
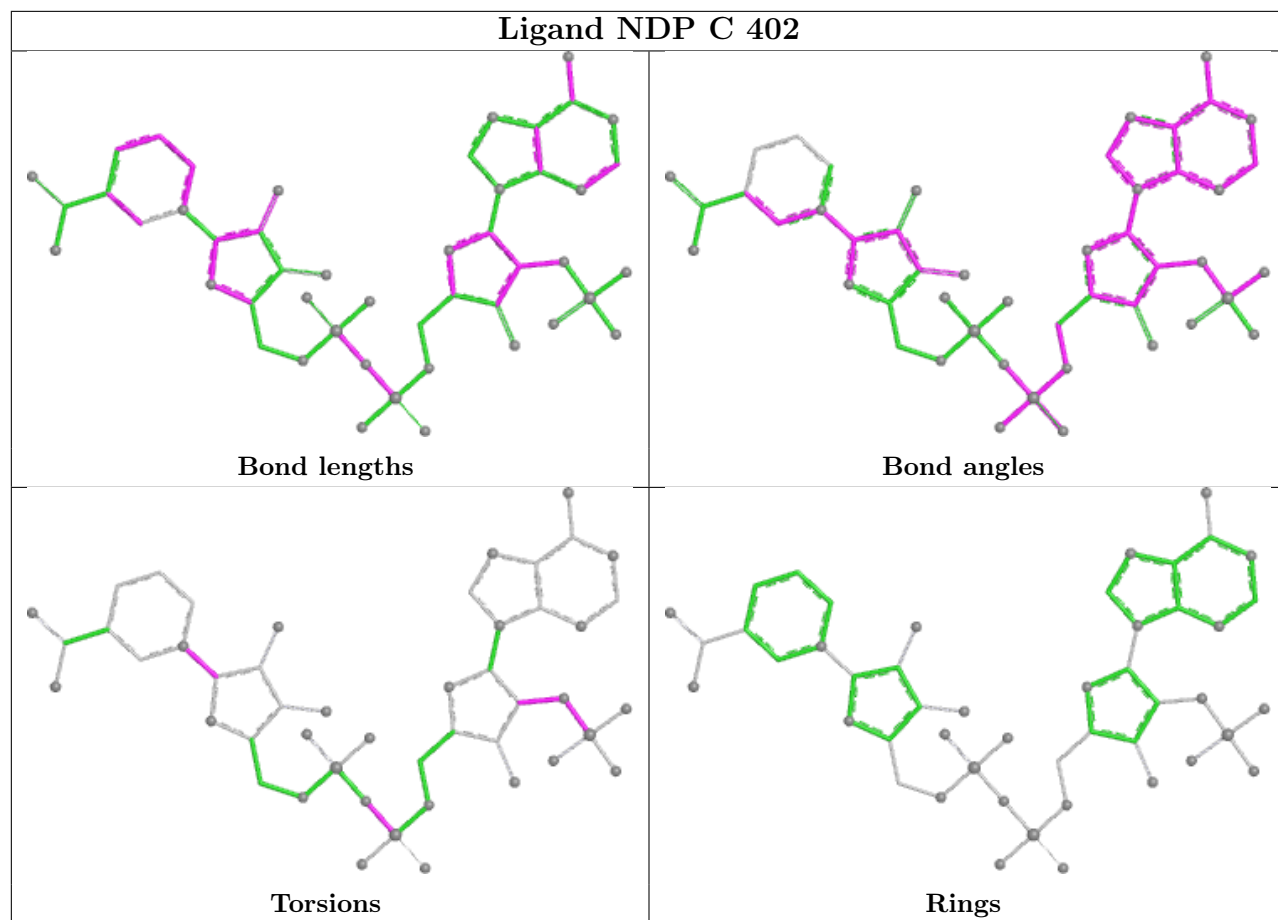
Mol	Chain	Res	Type	Clashes	Symm-Clashes
2	C	401	GEC	6	0
2	A	401	GEC	4	0
3	A	402	NDP	6	0
3	B	402	NDP	5	0
3	C	402	NDP	5	0
2	D	401	GEC	6	0
2	B	401	GEC	4	0
3	D	402	NDP	4	0

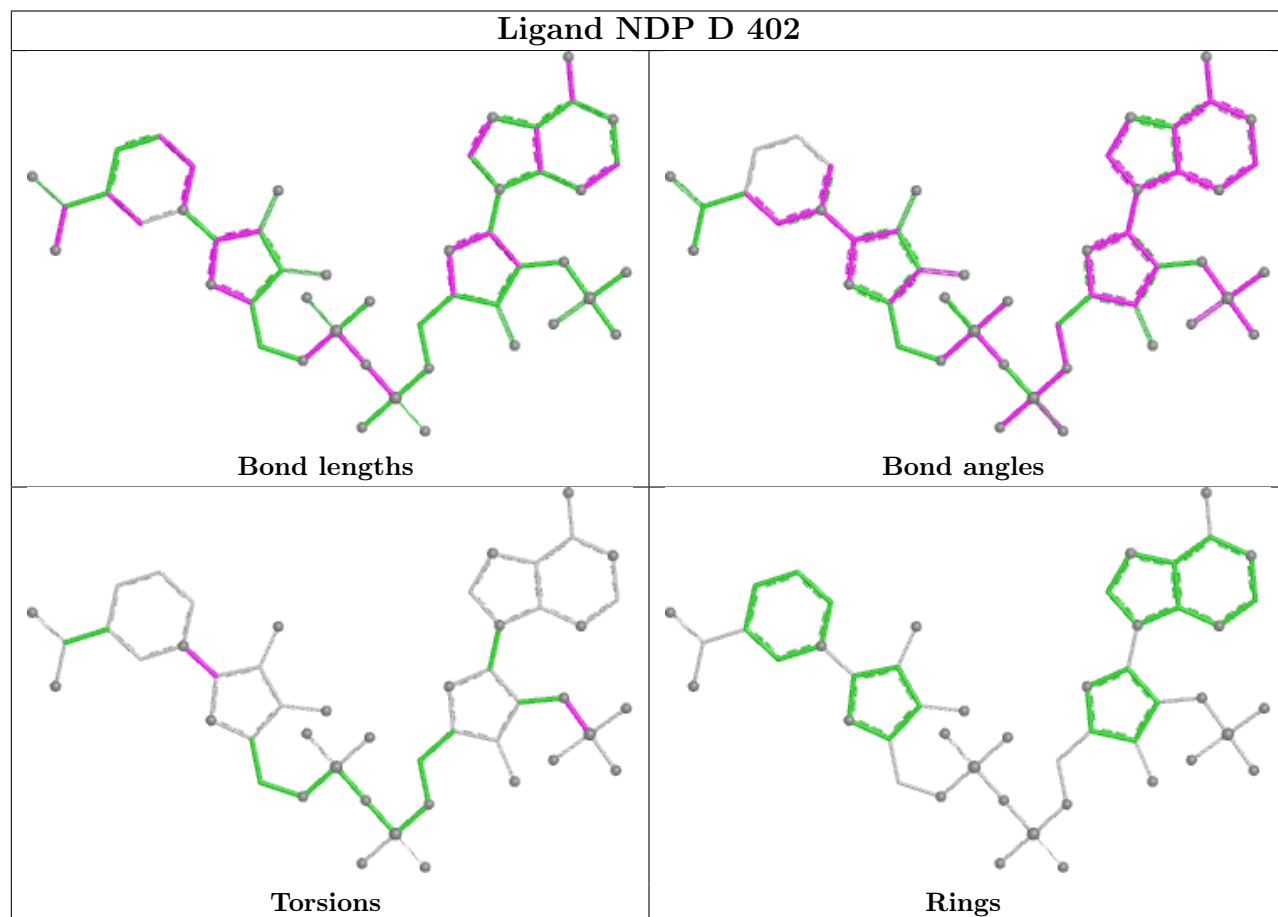
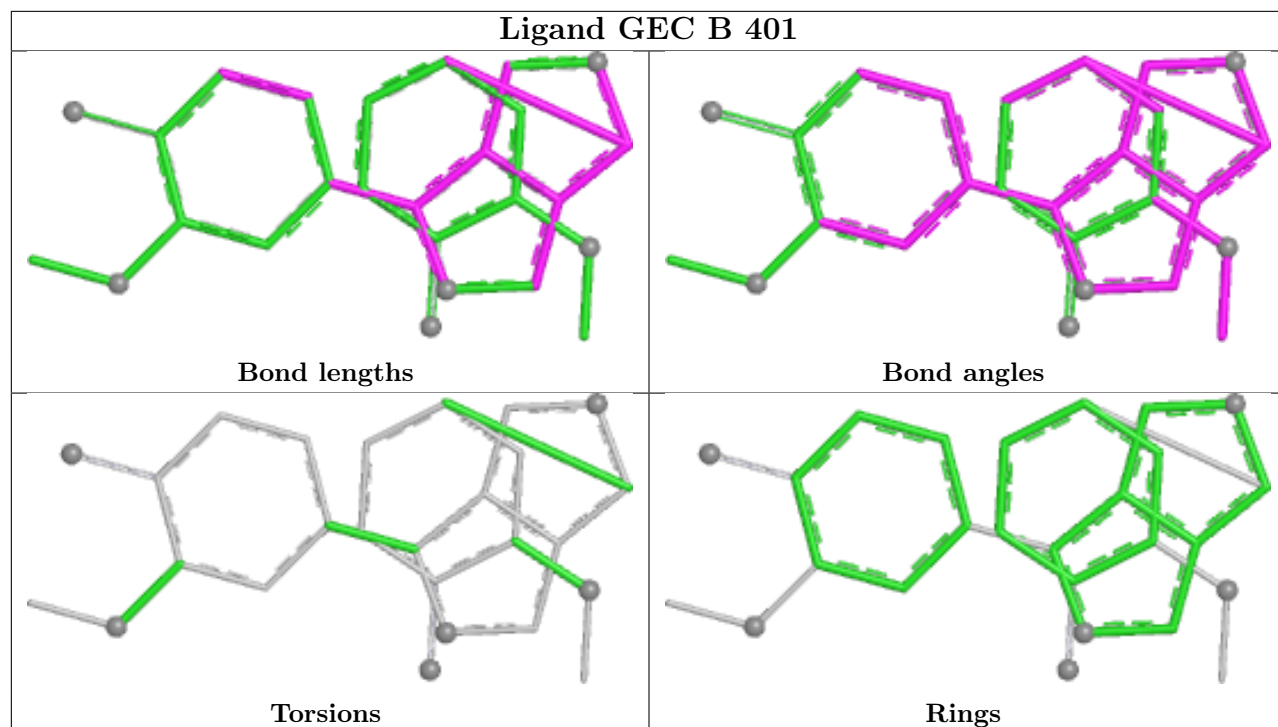
The following is a two-dimensional graphical depiction of Mogul quality analysis of bond lengths, bond angles, torsion angles, and ring geometry for all instances of the Ligand of Interest. In addition, ligands with molecular weight > 250 and outliers as shown on the validation Tables will also be included. For torsion angles, if less than 5% of the Mogul distribution of torsion angles is within 10 degrees of the torsion angle in question, then that torsion angle is considered an outlier. Any bond that is central to one or more torsion angles identified as an outlier by Mogul will be highlighted in the graph. For rings, the root-mean-square deviation (RMSD) between the ring in question and similar rings identified by Mogul is calculated over all ring torsion angles. If the average RMSD is greater than 60 degrees and the minimal RMSD between the ring in question and any Mogul-identified rings is also greater than 60 degrees, then that ring is considered an outlier. The outliers are highlighted in purple. The color gray indicates Mogul did not find sufficient equivalents in the CSD to analyse the geometry.











5.7 Other polymers [i](#)

There are no such residues in this entry.

5.8 Polymer linkage issues [i](#)

There are no chain breaks in this entry.

6 Fit of model and data [i](#)

6.1 Protein, DNA and RNA chains [i](#)

In the following table, the column labelled ‘#RSRZ > 2’ contains the number (and percentage) of RSRZ outliers, followed by percent RSRZ outliers for the chain as percentile scores relative to all X-ray entries and entries of similar resolution. The OWAB column contains the minimum, median, 95th percentile and maximum values of the occupancy-weighted average B-factor per residue. The column labelled ‘Q < 0.9’ lists the number of (and percentage) of residues with an average occupancy less than 0.9.

Mol	Chain	Analysed	<RSRZ>	#RSRZ>2	OWAB(Å ²)	Q<0.9
1	A	308/317 (97%)	0.28	4 (1%) 75 74	30, 44, 59, 67	0
1	B	309/317 (97%)	0.29	9 (2%) 53 52	29, 45, 60, 74	0
1	C	309/317 (97%)	-0.08	2 (0%) 85 85	25, 36, 52, 61	0
1	D	309/317 (97%)	-0.19	1 (0%) 90 89	24, 34, 49, 60	0
All	All	1235/1268 (97%)	0.07	16 (1%) 75 74	24, 39, 57, 74	0

All (16) RSRZ outliers are listed below:

Mol	Chain	Res	Type	RSRZ
1	B	134	LEU	4.2
1	B	137	GLY	3.3
1	A	158	TYR	3.1
1	B	45	GLY	3.0
1	A	221	LYS	3.0
1	A	91	GLY	2.9
1	D	44	ILE	2.9
1	B	292	GLY	2.7
1	B	149	GLN	2.5
1	B	9	LYS	2.3
1	C	149	GLN	2.3
1	A	79	VAL	2.3
1	B	152	GLU	2.2
1	B	44	ILE	2.1
1	B	133	ALA	2.1
1	C	44	ILE	2.0

6.2 Non-standard residues in protein, DNA, RNA chains [i](#)

There are no non-standard protein/DNA/RNA residues in this entry.

6.3 Carbohydrates [i](#)

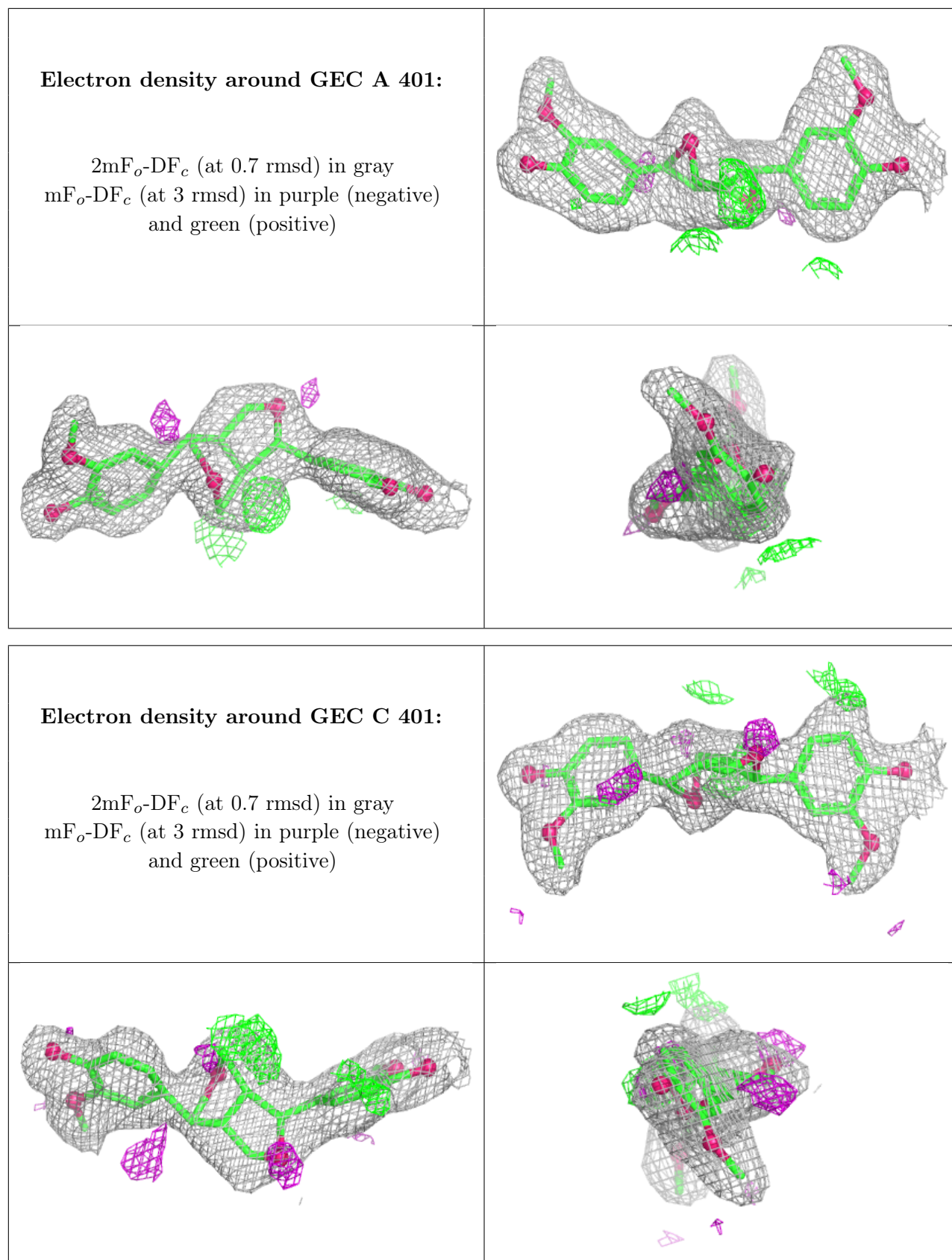
There are no oligosaccharides in this entry.

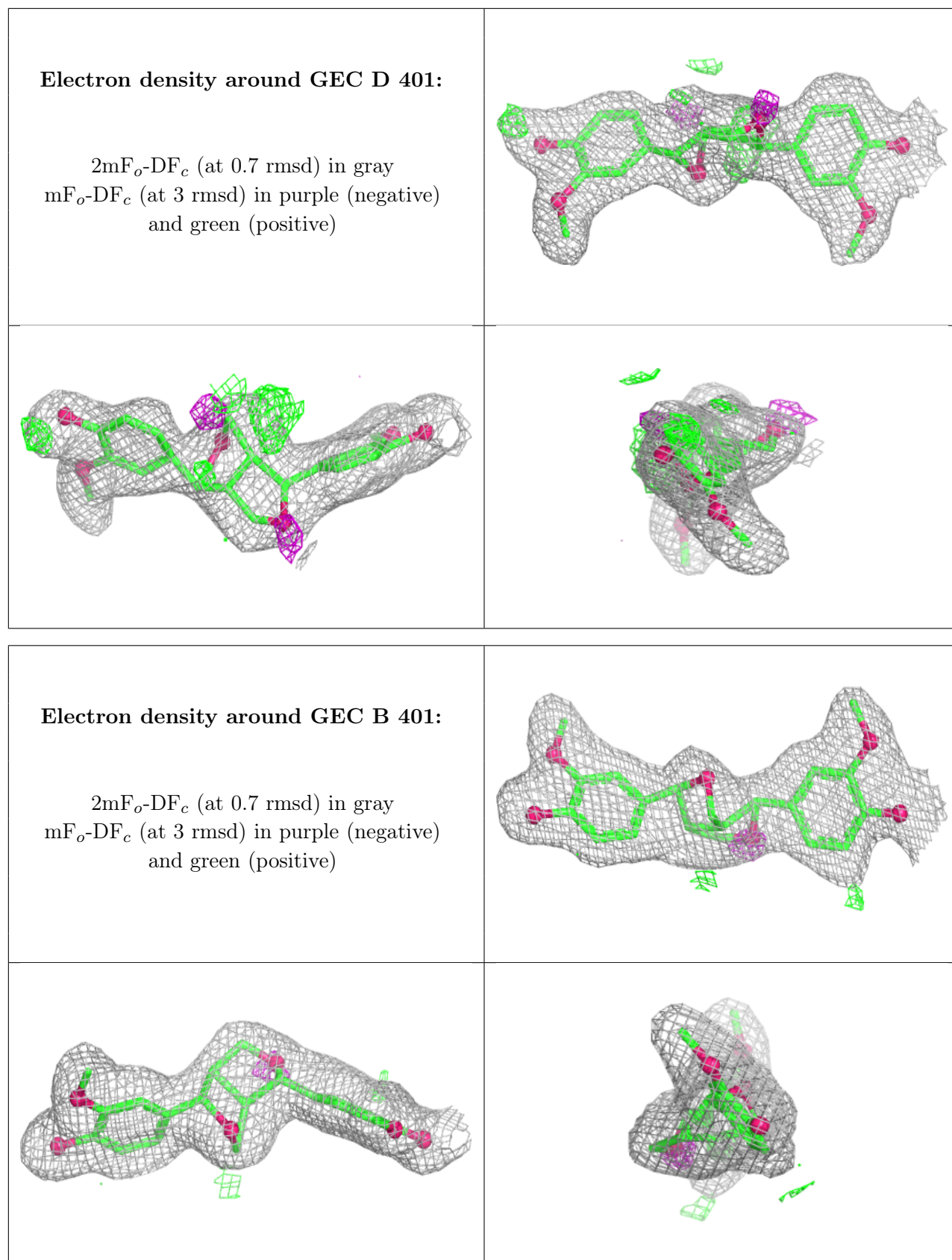
6.4 Ligands [i](#)

In the following table, the Atoms column lists the number of modelled atoms in the group and the number defined in the chemical component dictionary. The B-factors column lists the minimum, median, 95th percentile and maximum values of B factors of atoms in the group. The column labelled 'Q<0.9' lists the number of atoms with occupancy less than 0.9.

Mol	Type	Chain	Res	Atoms	RSCC	RSR	B-factors(Å ²)	Q<0.9
2	GEC	A	401	26/26	0.89	0.11	30,38,44,46	0
2	GEC	C	401	26/26	0.90	0.10	27,34,38,43	0
2	GEC	D	401	26/26	0.92	0.09	24,29,35,39	0
2	GEC	B	401	26/26	0.94	0.08	33,38,45,48	0
3	NDP	A	402	48/48	0.95	0.07	31,38,46,55	0
3	NDP	B	402	48/48	0.95	0.07	29,38,46,53	0
3	NDP	C	402	48/48	0.96	0.06	24,33,41,47	0
3	NDP	D	402	48/48	0.97	0.06	21,28,34,39	0

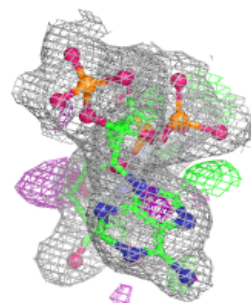
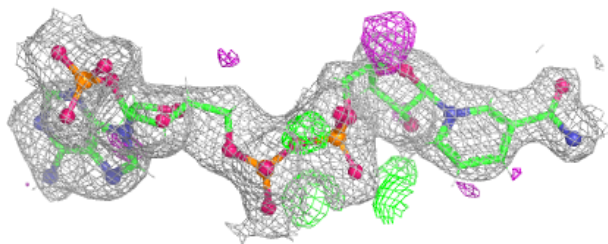
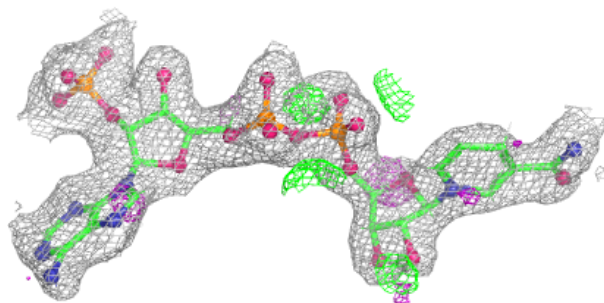
The following is a graphical depiction of the model fit to experimental electron density of all instances of the Ligand of Interest. In addition, ligands with molecular weight > 250 and outliers as shown on the geometry validation Tables will also be included. Each fit is shown from different orientation to approximate a three-dimensional view.



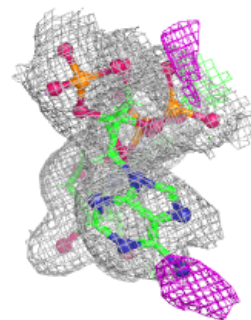
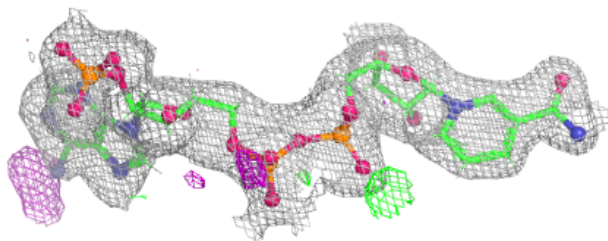
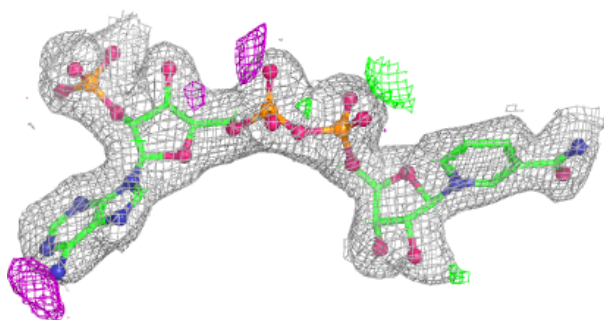


Electron density around NDP A 402:

$2mF_o-DF_c$ (at 0.7 rmsd) in gray
 mF_o-DF_c (at 3 rmsd) in purple (negative)
and green (positive)

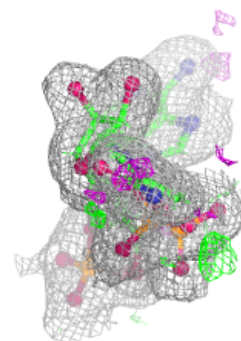
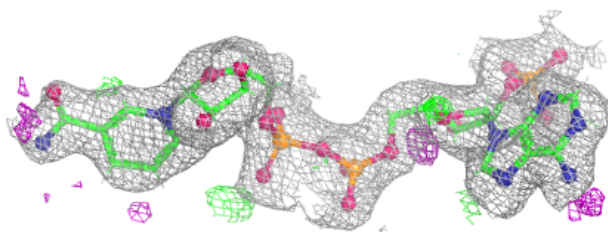
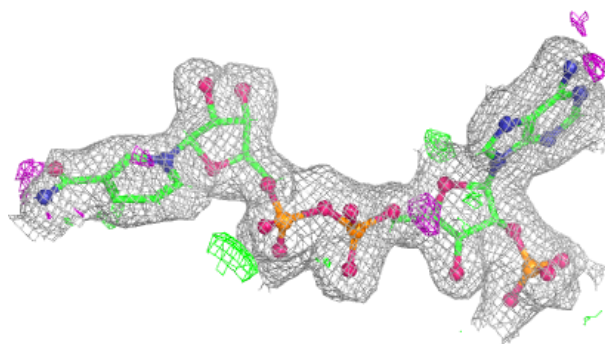
**Electron density around NDP B 402:**

$2mF_o-DF_c$ (at 0.7 rmsd) in gray
 mF_o-DF_c (at 3 rmsd) in purple (negative)
and green (positive)

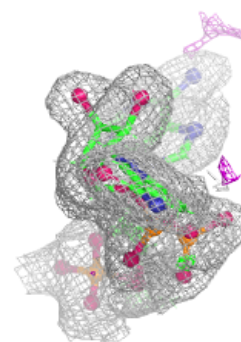
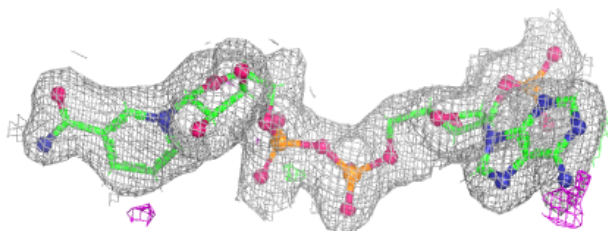
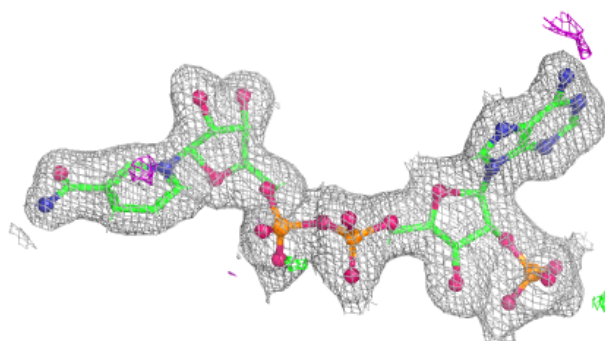


Electron density around NDP C 402:

$2mF_o-DF_c$ (at 0.7 rmsd) in gray
 mF_o-DF_c (at 3 rmsd) in purple (negative)
and green (positive)

**Electron density around NDP D 402:**

$2mF_o-DF_c$ (at 0.7 rmsd) in gray
 mF_o-DF_c (at 3 rmsd) in purple (negative)
and green (positive)



6.5 Other polymers [i](#)

There are no such residues in this entry.