



wwPDB X-ray Structure Validation Summary Report ⓘ

Mar 9, 2026 – 11:12 PM UTC

PDB ID : 8CTM / pdb_00008ctm
Title : Crystal structure of the nucleoside hydrolase from Leishmania donovani.
Authors : Chen, Y.; Tolbert, W.D.; Pazgier, M.
Deposited on : 2022-05-16
Resolution : 1.73 Å(reported)

This is a wwPDB X-ray Structure Validation Summary Report for a publicly released PDB entry.

We welcome your comments at validation@mail.wwpdb.org

A user guide is available at

<https://www.wwpdb.org/validation/2017/XrayValidationReportHelp>

with specific help available everywhere you see the ⓘ symbol.

The types of validation reports are described at

<http://www.wwpdb.org/validation/2017/FAQs#types>.

The following versions of software and data (see [references ⓘ](#)) were used in the production of this report:

MolProbity : 4-5-2 with Phenix2.0
Mogul : 2022.3.0, CSD as543be (2022)
Xtrriage (Phenix) : 2.0
EDS : 3.0
Percentile statistics : 20250101.v01 (using entries in the PDB archive January 1st 2025)
CCP4 : 9.0.010 (Gargrove)
Density-Fitness : 1.0.12
Ideal geometry (proteins) : Engh & Huber (2001)
Ideal geometry (DNA, RNA) : Parkinson et al. (1996)
Validation Pipeline (wwPDB-VP) : 2.49

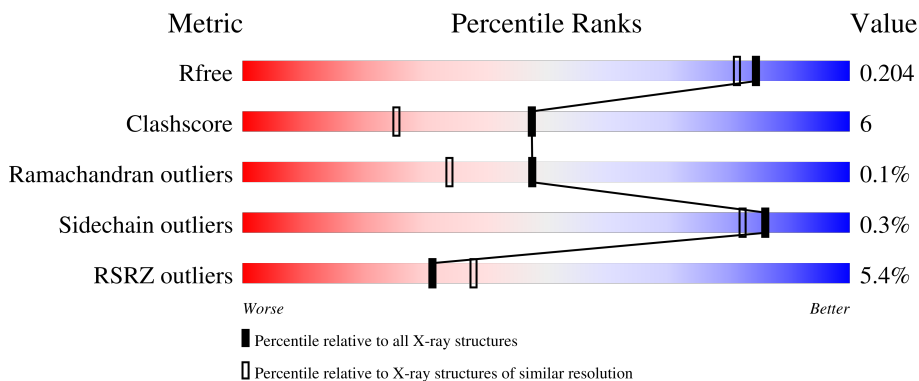
1 Overall quality at a glance

The following experimental techniques were used to determine the structure:

X-RAY DIFFRACTION

The reported resolution of this entry is 1.73 Å.

Percentile scores (ranging between 0-100) for global validation metrics of the entry are shown in the following graphic. The table shows the number of entries on which the scores are based.



Metric	Whole archive (#Entries)	Similar resolution (#Entries, resolution range(Å))
R_{free}	180053	1187 (1.74-1.74)
Clashscore	190562	1207 (1.74-1.74)
Ramachandran outliers	187476	1200 (1.74-1.74)
Sidechain outliers	187428	1200 (1.74-1.74)
RSRZ outliers	180081	1188 (1.74-1.74)

The table below summarises the geometric issues observed across the polymeric chains and their fit to the electron density. The red, orange, yellow and green segments of the lower bar indicate the fraction of residues that contain outliers for ≥ 3 , 2, 1 and 0 types of geometric quality criteria respectively. A grey segment represents the fraction of residues that are not modelled. The numeric value for each fraction is indicated below the corresponding segment, with a dot representing fractions $\leq 5\%$. The upper red bar (where present) indicates the fraction of residues that have poor fit to the electron density. The numeric value is given above the bar.

Mol	Chain	Length	Quality of chain
1	A	314	 3% 90% 7%
1	B	314	 6% 86% 11%
1	C	314	 2% 85% 12%
1	D	314	 11% 84% 13%

The following table lists non-polymeric compounds, carbohydrate monomers and non-standard

residues in protein, DNA, RNA chains that are outliers for geometric or electron-density-fit criteria:

Mol	Type	Chain	Res	Chirality	Geometry	Clashes	Electron density
5	PEG	B	405	-	-	X	-

2 Entry composition [i](#)

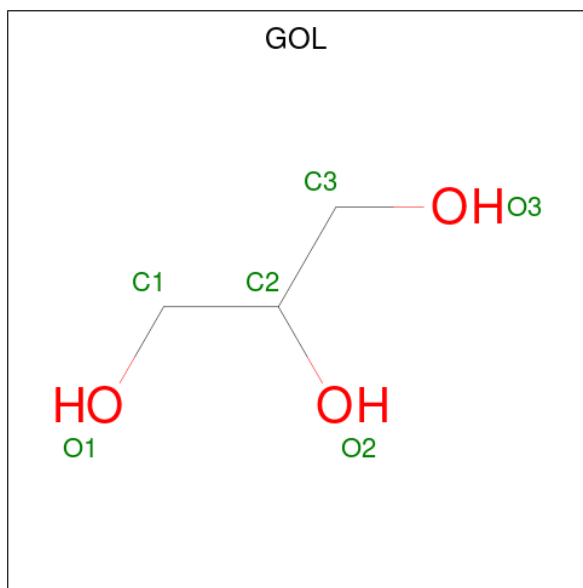
There are 7 unique types of molecules in this entry. The entry contains 10338 atoms, of which 0 are hydrogens and 0 are deuteriums.

In the tables below, the ZeroOcc column contains the number of atoms modelled with zero occupancy, the AltConf column contains the number of residues with at least one atom in alternate conformation and the Trace column contains the number of residues modelled with at most 2 atoms.

- Molecule 1 is a protein called Inosine-uridine preferring nucleoside hydrolase.

Mol	Chain	Residues	Atoms					ZeroOcc	AltConf	Trace
			Total	C	N	O	S			
1	A	306	Total 2363	C 1513	N 403	O 431	S 16	0	5	0
1	B	304	Total 2338	C 1497	N 398	O 429	S 14	0	2	0
1	C	305	Total 2345	C 1500	N 401	O 430	S 14	0	3	0
1	D	308	Total 2370	C 1518	N 404	O 433	S 15	0	3	0

- Molecule 2 is GLYCEROL (CCD ID: GOL) (formula: C₃H₈O₃).



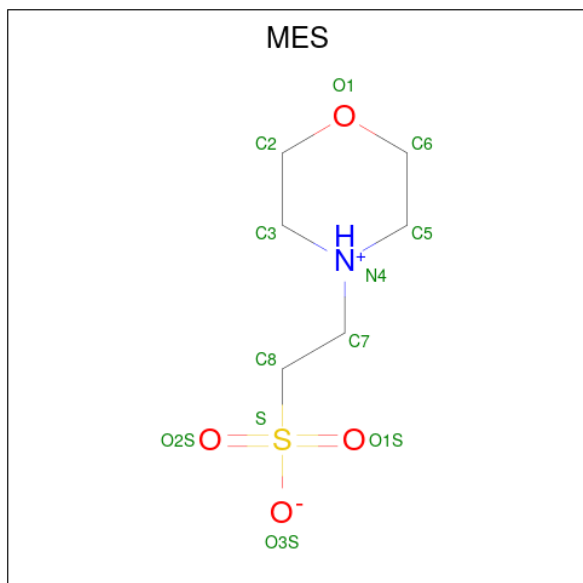
Mol	Chain	Residues	Atoms			ZeroOcc	AltConf
			Total	C	O		
2	A	1	Total 6	C 3	O 3	0	0
2	B	1	Total 6	C 3	O 3	0	0

Continued on next page...

Continued from previous page...

Mol	Chain	Residues	Atoms			ZeroOcc	AltConf
2	C	1	Total	C	O	0	0
			6	3	3		
2	D	1	Total	C	O	0	0
			6	3	3		

- Molecule 3 is 2-(N-MORPHOLINO)-ETHANESULFONIC ACID (CCD ID: MES) (formula: C₆H₁₃NO₄S).

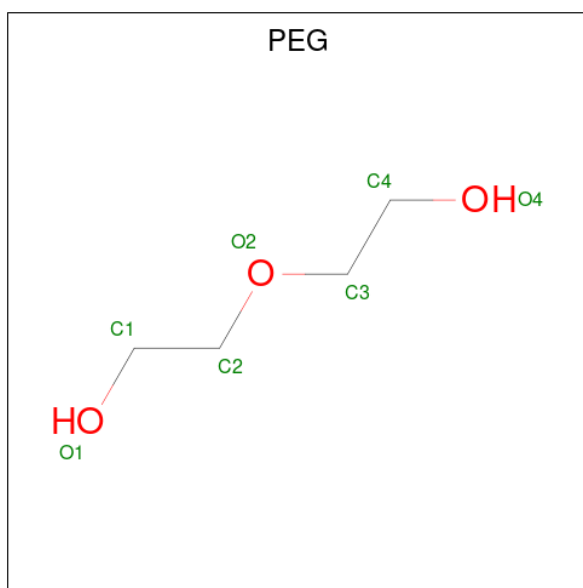


Mol	Chain	Residues	Atoms					ZeroOcc	AltConf
3	A	1	Total	C	N	O	S	0	0
			12	6	1	4	1		
3	D	1	Total	C	N	O	S	0	0
			12	6	1	4	1		
3	D	1	Total	C	N	O	S	0	0
			12	6	1	4	1		

- Molecule 4 is CALCIUM ION (CCD ID: CA) (formula: Ca).

Mol	Chain	Residues	Atoms		ZeroOcc	AltConf
4	A	1	Total	Ca	0	0
			1	1		
4	B	1	Total	Ca	0	0
			1	1		
4	C	2	Total	Ca	0	0
			2	2		
4	D	1	Total	Ca	0	0
			1	1		

- Molecule 5 is DI(HYDROXYETHYL)ETHER (CCD ID: PEG) (formula: C₄H₁₀O₃).



Mol	Chain	Residues	Atoms	ZeroOcc	AltConf
5	A	1	Total C O 7 4 3	0	0
5	B	1	Total C O 7 4 3	0	0

- Molecule 6 is CHLORIDE ION (CCD ID: CL) (formula: Cl).

Mol	Chain	Residues	Atoms	ZeroOcc	AltConf
6	B	2	Total Cl 2 2	0	0

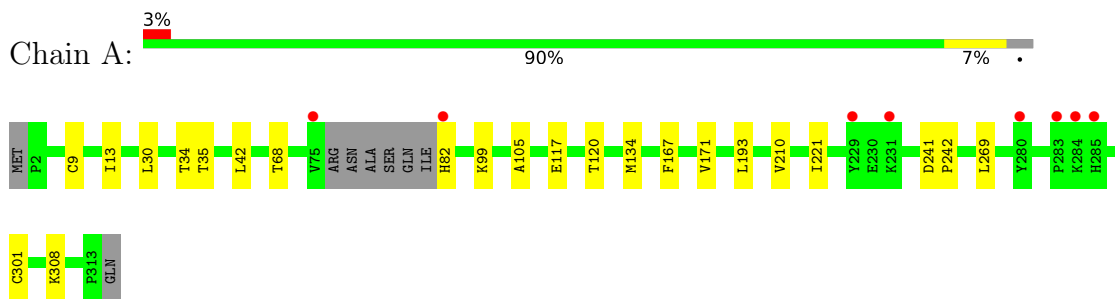
- Molecule 7 is water.

Mol	Chain	Residues	Atoms	ZeroOcc	AltConf
7	A	294	Total O 294 294	0	0
7	B	205	Total O 205 205	0	0
7	C	163	Total O 163 163	0	0
7	D	179	Total O 179 179	0	0

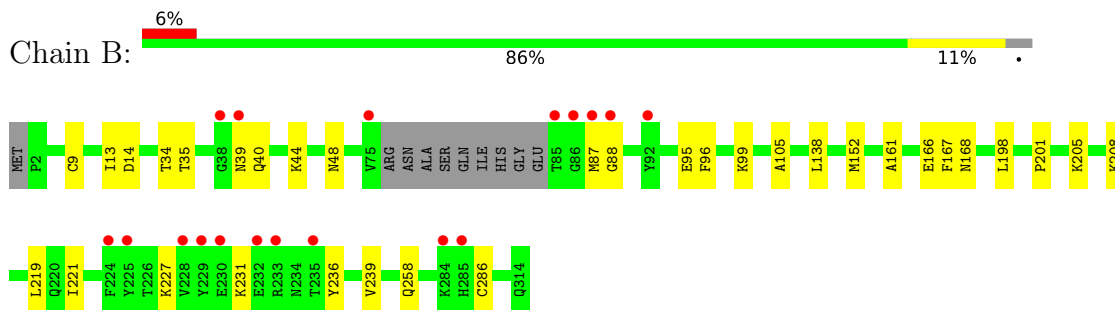
3 Residue-property plots [i](#)

These plots are drawn for all protein, RNA, DNA and oligosaccharide chains in the entry. The first graphic for a chain summarises the proportions of the various outlier classes displayed in the second graphic. The second graphic shows the sequence view annotated by issues in geometry and electron density. Residues are color-coded according to the number of geometric quality criteria for which they contain at least one outlier: green = 0, yellow = 1, orange = 2 and red = 3 or more. A red dot above a residue indicates a poor fit to the electron density ($RSRZ > 2$). Stretches of 2 or more consecutive residues without any outlier are shown as a green connector. Residues present in the sample, but not in the model, are shown in grey.

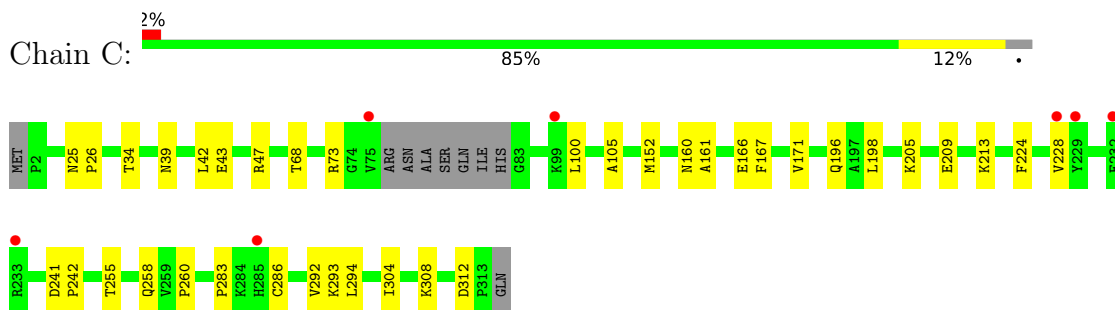
- Molecule 1: Inosine-uridine preferring nucleoside hydrolase



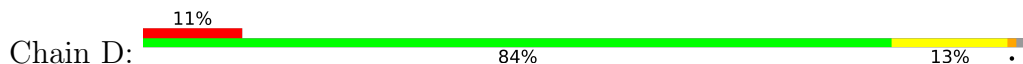
- Molecule 1: Inosine-uridine preferring nucleoside hydrolase

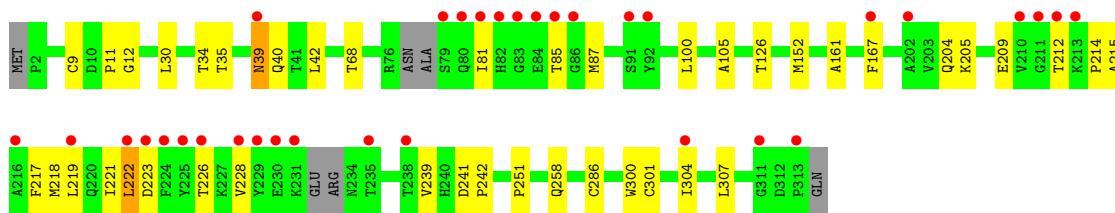


- Molecule 1: Inosine-uridine preferring nucleoside hydrolase



- Molecule 1: Inosine-uridine preferring nucleoside hydrolase





4 Data and refinement statistics i

Property	Value	Source
Space group	P 1 21 1	Depositor
Cell constants a, b, c, α , β , γ	80.22Å 79.11Å 107.62Å 90.00° 90.77° 90.00°	Depositor
Resolution (Å)	25.87 – 1.73 25.87 – 1.73	Depositor EDS
% Data completeness (in resolution range)	62.1 (25.87-1.73) 90.6 (25.87-1.73)	Depositor EDS
R_{merge}	0.09	Depositor
R_{sym}	(Not available)	Depositor
$\langle I/\sigma(I) \rangle$ ¹	3.06 (at 1.73Å)	Xtrriage
Refinement program	PHENIX (1.19.1_4122: ???)	Depositor
R, R_{free}	0.174 , 0.207 0.175 , 0.204	Depositor DCC
R_{free} test set	6292 reflections (4.47%)	wwPDB-VP
Wilson B-factor (Å ²)	18.1	Xtrriage
Anisotropy	0.030	Xtrriage
Bulk solvent k_{sol} (e/Å ³), B_{sol} (Å ²)	0.35 , 41.6	EDS
L-test for twinning ²	$\langle L \rangle = 0.48$, $\langle L^2 \rangle = 0.31$	Xtrriage
Estimated twinning fraction	0.013 for k,h,-l 0.014 for -k,-h,-l 0.025 for h,-k,-l	Xtrriage
F_o, F_c correlation	0.96	EDS
Total number of atoms	10338	wwPDB-VP
Average B, all atoms (Å ²)	24.0	wwPDB-VP

Xtrriage's analysis on translational NCS is as follows: *The largest off-origin peak in the Patterson function is 4.17% of the height of the origin peak. No significant pseudotranslation is detected.*

¹Intensities estimated from amplitudes.

²Theoretical values of $\langle |L| \rangle$, $\langle L^2 \rangle$ for acentric reflections are 0.5, 0.333 respectively for untwinned datasets, and 0.375, 0.2 for perfectly twinned datasets.

5 Model quality [i](#)

5.1 Standard geometry [i](#)

Bond lengths and bond angles in the following residue types are not validated in this section: CL, MES, GOL, CA, PEG

The Z score for a bond length (or angle) is the number of standard deviations the observed value is removed from the expected value. A bond length (or angle) with $|Z| > 5$ is considered an outlier worth inspection. RMSZ is the root-mean-square of all Z scores of the bond lengths (or angles).

Mol	Chain	Bond lengths		Bond angles	
		RMSZ	# Z >5	RMSZ	# Z >5
1	A	0.64	0/2428	0.76	0/3311
1	B	0.61	0/2393	0.75	0/3263
1	C	0.55	0/2402	0.72	0/3276
1	D	0.58	1/2428 (0.0%)	0.77	0/3309
All	All	0.60	1/9651 (0.0%)	0.75	0/13159

All (1) bond length outliers are listed below:

Mol	Chain	Res	Type	Atoms	Z	Observed(Å)	Ideal(Å)
1	D	39	ASN	C-O	-5.43	1.17	1.24

There are no bond angle outliers.

There are no chirality outliers.

There are no planarity outliers.

5.2 Too-close contacts [i](#)

In the following table, the Non-H and H(model) columns list the number of non-hydrogen atoms and hydrogen atoms in the chain respectively. The H(added) column lists the number of hydrogen atoms added and optimized by MolProbity. The Clashes column lists the number of clashes within the asymmetric unit, whereas Symm-Clashes lists symmetry-related clashes.

Mol	Chain	Non-H	H(model)	H(added)	Clashes	Symm-Clashes
1	A	2363	0	2417	17	0
1	B	2338	0	2386	28	0
1	C	2345	0	2400	26	0
1	D	2370	0	2420	34	0
2	A	6	0	7	0	0
2	B	6	0	7	1	0

Continued on next page...

Continued from previous page...

Mol	Chain	Non-H	H(model)	H(added)	Clashes	Symm-Clashes
2	C	6	0	7	1	0
2	D	6	0	7	1	0
3	A	12	0	13	1	0
3	D	24	0	26	3	0
4	A	1	0	0	0	0
4	B	1	0	0	0	0
4	C	2	0	0	0	0
4	D	1	0	0	0	0
5	A	7	0	9	2	0
5	B	7	0	10	4	0
6	B	2	0	0	0	0
7	A	294	0	0	5	0
7	B	205	0	0	0	0
7	C	163	0	0	2	0
7	D	179	0	0	3	0
All	All	10338	0	9709	108	0

The all-atom clashscore is defined as the number of clashes found per 1000 atoms (including hydrogen atoms). The all-atom clashscore for this structure is 6.

The worst 5 of 108 close contacts within the same asymmetric unit are listed below, sorted by their clash magnitude.

Atom-1	Atom-2	Interatomic distance (Å)	Clash overlap (Å)
1:D:85:THR:HG23	1:D:87:MET:H	1.03	1.08
1:D:39:ASN:HB2	1:D:167[B]:PHE:CZ	1.90	1.06
1:D:85:THR:CG2	1:D:87:MET:H	1.80	0.94
1:D:85:THR:HG23	1:D:87:MET:N	1.87	0.89
1:B:39:ASN:HB3	1:B:167[B]:PHE:CZ	2.24	0.73

There are no symmetry-related clashes.

5.3 Torsion angles [i](#)

5.3.1 Protein backbone [i](#)

In the following table, the Percentiles column shows the percent Ramachandran outliers of the chain as a percentile score with respect to all X-ray entries followed by that with respect to entries of similar resolution.

The Analysed column shows the number of residues for which the backbone conformation was analysed, and the total number of residues.

Mol	Chain	Analysed	Favoured	Allowed	Outliers	Percentiles	
1	A	307/314 (98%)	301 (98%)	6 (2%)	0	100	100
1	B	302/314 (96%)	293 (97%)	8 (3%)	1 (0%)	36	23
1	C	304/314 (97%)	292 (96%)	12 (4%)	0	100	100
1	D	305/314 (97%)	299 (98%)	6 (2%)	0	100	100
All	All	1218/1256 (97%)	1185 (97%)	32 (3%)	1 (0%)	48	34

All (1) Ramachandran outliers are listed below:

Mol	Chain	Res	Type
1	B	88	GLY

5.3.2 Protein sidechains [i](#)

In the following table, the Percentiles column shows the percent sidechain outliers of the chain as a percentile score with respect to all X-ray entries followed by that with respect to entries of similar resolution.

The Analysed column shows the number of residues for which the sidechain conformation was analysed, and the total number of residues.

Mol	Chain	Analysed	Rotameric	Outliers	Percentiles	
1	A	261/263 (99%)	260 (100%)	1 (0%)	84	79
1	B	257/263 (98%)	257 (100%)	0	100	100
1	C	258/263 (98%)	258 (100%)	0	100	100
1	D	261/263 (99%)	259 (99%)	2 (1%)	73	64
All	All	1037/1052 (99%)	1034 (100%)	3 (0%)	86	82

All (3) residues with a non-rotameric sidechain are listed below:

Mol	Chain	Res	Type
1	A	30	LEU
1	D	30	LEU
1	D	222	LEU

Sometimes sidechains can be flipped to improve hydrogen bonding and reduce clashes. 5 of 7 such sidechains are listed below:

Mol	Chain	Res	Type
1	C	196	GLN

Continued on next page...

Continued from previous page...

Mol	Chain	Res	Type
1	C	258	GLN
1	D	258	GLN
1	C	285	HIS
1	C	195	HIS

5.3.3 RNA [i](#)

There are no RNA molecules in this entry.

5.4 Non-standard residues in protein, DNA, RNA chains [i](#)

There are no non-standard protein/DNA/RNA residues in this entry.

5.5 Carbohydrates [i](#)

There are no oligosaccharides in this entry.

5.6 Ligand geometry [i](#)

Of 16 ligands modelled in this entry, 7 are monoatomic - leaving 9 for Mogul analysis.

In the following table, the Counts columns list the number of bonds (or angles) for which Mogul statistics could be retrieved, the number of bonds (or angles) that are observed in the model and the number of bonds (or angles) that are defined in the Chemical Component Dictionary. The Link column lists molecule types, if any, to which the group is linked. The Z score for a bond length (or angle) is the number of standard deviations the observed value is removed from the expected value. A bond length (or angle) with $|Z| > 2$ is considered an outlier worth inspection. RMSZ is the root-mean-square of all Z scores of the bond lengths (or angles).

Mol	Type	Chain	Res	Link	Bond lengths			Bond angles		
					Counts	RMSZ	$\# Z > 2$	Counts	RMSZ	$\# Z > 2$
3	MES	D	402	-	12,12,12	0.79	0	15,16,16	0.82	0
5	PEG	A	404	-	6,6,6	0.55	0	5,5,5	0.44	0
2	GOL	B	401	4	5,5,5	0.14	0	5,5,5	0.56	0
3	MES	D	403	-	12,12,12	0.86	0	15,16,16	0.56	0
3	MES	A	402	-	12,12,12	1.23	3 (25%)	15,16,16	0.48	0
2	GOL	A	401	4	5,5,5	0.32	0	5,5,5	0.87	0
2	GOL	C	401	4	5,5,5	0.24	0	5,5,5	0.58	0
5	PEG	B	405	-	6,6,6	0.51	0	5,5,5	0.50	0
2	GOL	D	401	4	5,5,5	0.18	0	5,5,5	0.40	0

In the following table, the Chirals column lists the number of chiral outliers, the number of chiral centers analysed, the number of these observed in the model and the number defined in the Chemical Component Dictionary. Similar counts are reported in the Torsion and Rings columns. '-' means no outliers of that kind were identified.

Mol	Type	Chain	Res	Link	Chirals	Torsions	Rings
3	MES	D	402	-	-	2/6/14/14	0/1/1/1
5	PEG	A	404	-	-	1/4/4/4	-
2	GOL	B	401	4	-	2/4/4/4	-
3	MES	D	403	-	-	3/6/14/14	0/1/1/1
3	MES	A	402	-	-	0/6/14/14	0/1/1/1
2	GOL	A	401	4	-	1/4/4/4	-
2	GOL	C	401	4	-	0/4/4/4	-
5	PEG	B	405	-	-	1/4/4/4	-
2	GOL	D	401	4	-	2/4/4/4	-

All (3) bond length outliers are listed below:

Mol	Chain	Res	Type	Atoms	Z	Observed(Å)	Ideal(Å)
3	A	402	MES	O3S-S	-2.29	1.38	1.47
3	A	402	MES	O2S-S	-2.26	1.38	1.45
3	A	402	MES	O1S-S	-2.12	1.39	1.45

There are no bond angle outliers.

There are no chirality outliers.

5 of 12 torsion outliers are listed below:

Mol	Chain	Res	Type	Atoms
2	D	401	GOL	O1-C1-C2-C3
3	D	402	MES	C8-C7-N4-C5
3	D	402	MES	N4-C7-C8-S
3	D	403	MES	C8-C7-N4-C5
3	D	403	MES	N4-C7-C8-S

There are no ring outliers.

8 monomers are involved in 13 short contacts:

Mol	Chain	Res	Type	Clashes	Symm-Clashes
3	D	402	MES	2	0
5	A	404	PEG	2	0
2	B	401	GOL	1	0
3	D	403	MES	1	0

Continued on next page...

Continued from previous page...

Mol	Chain	Res	Type	Clashes	Symm-Clashes
3	A	402	MES	1	0
2	C	401	GOL	1	0
5	B	405	PEG	4	0
2	D	401	GOL	1	0

5.7 Other polymers [i](#)

There are no such residues in this entry.

5.8 Polymer linkage issues [i](#)

There are no chain breaks in this entry.

6 Fit of model and data [i](#)

6.1 Protein, DNA and RNA chains [i](#)

In the following table, the column labelled ‘#RSRZ > 2’ contains the number (and percentage) of RSRZ outliers, followed by percent RSRZ outliers for the chain as percentile scores relative to all X-ray entries and entries of similar resolution. The OWAB column contains the minimum, median, 95th percentile and maximum values of the occupancy-weighted average B-factor per residue. The column labelled ‘Q < 0.9’ lists the number of (and percentage) of residues with an average occupancy less than 0.9.

Mol	Chain	Analysed	<RSRZ>	#RSRZ>2	OWAB(Å ²)	Q<0.9
1	A	306/314 (97%)	-0.42	8 (2%) 57 65	7, 14, 34, 64	5 (1%)
1	B	304/314 (96%)	-0.03	18 (5%) 28 34	9, 19, 48, 81	2 (0%)
1	C	305/314 (97%)	0.07	7 (2%) 61 69	12, 23, 49, 68	3 (0%)
1	D	308/314 (98%)	0.24	33 (10%) 11 14	8, 22, 55, 76	3 (0%)
All	All	1223/1256 (97%)	-0.04	66 (5%) 31 38	7, 19, 50, 81	13 (1%)

The worst 5 of 66 RSRZ outliers are listed below:

Mol	Chain	Res	Type	RSRZ
1	D	81	ILE	6.7
1	A	75	VAL	5.3
1	B	86	GLY	5.3
1	D	85	THR	4.7
1	B	225	TYR	4.5

6.2 Non-standard residues in protein, DNA, RNA chains [i](#)

There are no non-standard protein/DNA/RNA residues in this entry.

6.3 Carbohydrates [i](#)

There are no oligosaccharides in this entry.

6.4 Ligands [i](#)

In the following table, the Atoms column lists the number of modelled atoms in the group and the number defined in the chemical component dictionary. The B-factors column lists the minimum, median, 95th percentile and maximum values of B factors of atoms in the group. The column labelled ‘Q < 0.9’ lists the number of atoms with occupancy less than 0.9.

Mol	Type	Chain	Res	Atoms	RSCC	RSR	B-factors(\AA^2)	Q<0.9
3	MES	D	402	12/12	0.82	0.15	35,50,61,62	0
6	CL	B	404	1/1	0.83	0.16	65,65,65,65	0
3	MES	D	403	12/12	0.84	0.15	31,53,60,67	0
5	PEG	B	405	7/7	0.87	0.17	29,50,71,77	0
4	CA	C	403	1/1	0.90	0.10	46,46,46,46	0
5	PEG	A	404	7/7	0.91	0.13	23,35,64,66	0
6	CL	B	403	1/1	0.93	0.14	56,56,56,56	0
2	GOL	D	401	6/6	0.93	0.10	20,32,45,56	0
2	GOL	B	401	6/6	0.94	0.10	19,26,34,36	0
2	GOL	C	401	6/6	0.95	0.07	22,26,31,39	0
2	GOL	A	401	6/6	0.96	0.06	13,16,19,22	0
3	MES	A	402	12/12	0.98	0.07	15,21,37,38	0
4	CA	B	402	1/1	0.99	0.03	16,16,16,16	0
4	CA	D	404	1/1	0.99	0.03	17,17,17,17	0
4	CA	C	402	1/1	0.99	0.02	17,17,17,17	0
4	CA	A	403	1/1	1.00	0.01	10,10,10,10	0

6.5 Other polymers [i](#)

There are no such residues in this entry.