



wwPDB X-ray Structure Validation Summary Report ⓘ

Mar 4, 2026 – 09:57 PM UTC

PDB ID : 5CU5 / pdb_00005cu5
Title : Crystal structure of ERAP2 without catalytic Zn(II) atom
Authors : Saridakis, E.; Mathioudakis, N.; Giastas, P.; Mavridis, I.M.; Stratikos, E.
Deposited on : 2015-07-24
Resolution : 3.02 Å(reported)

This is a wwPDB X-ray Structure Validation Summary Report for a publicly released PDB entry.

We welcome your comments at validation@mail.wwpdb.org

A user guide is available at

<https://www.wwpdb.org/validation/2017/XrayValidationReportHelp>

with specific help available everywhere you see the ⓘ symbol.

The types of validation reports are described at

<http://www.wwpdb.org/validation/2017/FAQs#types>.

The following versions of software and data (see [references ⓘ](#)) were used in the production of this report:

MolProbity : 4-5-2 with Phenix2.0
Mogul : 2022.3.0, CSD as543be (2022)
Xtriage (Phenix) : 2.0
EDS : 3.0
Percentile statistics : 20250101.v01 (using entries in the PDB archive January 1st 2025)
CCP4 : 9.0.010 (Gargrove)
Density-Fitness : 1.0.12
Ideal geometry (proteins) : Engh & Huber (2001)
Ideal geometry (DNA, RNA) : Parkinson et al. (1996)
Validation Pipeline (wwPDB-VP) : 2.49

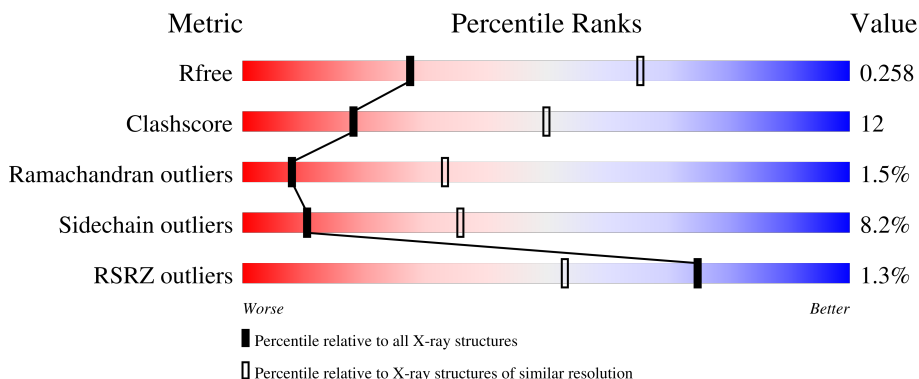
1 Overall quality at a glance

The following experimental techniques were used to determine the structure:

X-RAY DIFFRACTION

The reported resolution of this entry is 3.02 Å.

Percentile scores (ranging between 0-100) for global validation metrics of the entry are shown in the following graphic. The table shows the number of entries on which the scores are based.




Metric	Whole archive (#Entries)	Similar resolution (#Entries, resolution range(Å))
R_{free}	180053	3131 (3.04-3.00)
Clashscore	190562	3444 (3.04-3.00)
Ramachandran outliers	187476	3319 (3.04-3.00)
Sidechain outliers	187428	3322 (3.04-3.00)
RSRZ outliers	180081	3130 (3.04-3.00)

The table below summarises the geometric issues observed across the polymeric chains and their fit to the electron density. The red, orange, yellow and green segments of the lower bar indicate the fraction of residues that contain outliers for ≥ 3 , 2, 1 and 0 types of geometric quality criteria respectively. A grey segment represents the fraction of residues that are not modelled. The numeric value for each fraction is indicated below the corresponding segment, with a dot representing fractions $\leq 5\%$. The upper red bar (where present) indicates the fraction of residues that have poor fit to the electron density. The numeric value is given above the bar.

Mol	Chain	Length	Quality of chain
1	A	967	 68% 18% 10%
1	B	967	 67% 20% 11%
2	C	3	 67% 33%
3	D	2	 50% 50%
3	F	2	 100%

Continued on next page...

Continued from previous page...

Mol	Chain	Length	Quality of chain
4	E	4	 50% 50%

2 Entry composition i

There are 6 unique types of molecules in this entry. The entry contains 14562 atoms, of which 0 are hydrogens and 0 are deuteriums.

In the tables below, the ZeroOcc column contains the number of atoms modelled with zero occupancy, the AltConf column contains the number of residues with at least one atom in alternate conformation and the Trace column contains the number of residues modelled with at most 2 atoms.

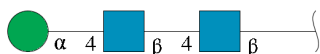
- Molecule 1 is a protein called Endoplasmic reticulum aminopeptidase 2.

Mol	Chain	Residues	Atoms					ZeroOcc	AltConf	Trace
			Total	C	N	O	S			
1	A	871	7089	4576	1176	1309	28	0	1	0
1	B	862	7009	4523	1164	1295	27	0	0	0

There are 16 discrepancies between the modelled and reference sequences:

Chain	Residue	Modelled	Actual	Comment	Reference
A	2	VAL	PHE	conflict	UNP Q6P179
A	961	ARG	-	expression tag	UNP Q6P179
A	962	HIS	-	expression tag	UNP Q6P179
A	963	HIS	-	expression tag	UNP Q6P179
A	964	HIS	-	expression tag	UNP Q6P179
A	965	HIS	-	expression tag	UNP Q6P179
A	966	HIS	-	expression tag	UNP Q6P179
A	967	HIS	-	expression tag	UNP Q6P179
B	2	VAL	PHE	conflict	UNP Q6P179
B	961	ARG	-	expression tag	UNP Q6P179
B	962	HIS	-	expression tag	UNP Q6P179
B	963	HIS	-	expression tag	UNP Q6P179
B	964	HIS	-	expression tag	UNP Q6P179
B	965	HIS	-	expression tag	UNP Q6P179
B	966	HIS	-	expression tag	UNP Q6P179
B	967	HIS	-	expression tag	UNP Q6P179

- Molecule 2 is an oligosaccharide called alpha-D-mannopyranose-(1-4)-2-acetamido-2-deoxy-beta-D-glucopyranose-(1-4)-2-acetamido-2-deoxy-beta-D-glucopyranose.



Mol	Chain	Residues	Atoms				ZeroOcc	AltConf	Trace
			Total	C	N	O			
2	C	3	39	22	2	15	0	0	0

- Molecule 3 is an oligosaccharide called 2-acetamido-2-deoxy-beta-D-glucopyranose-(1-4)-2-acetamido-2-deoxy-beta-D-glucopyranose.



Mol	Chain	Residues	Atoms				ZeroOcc	AltConf	Trace
			Total	C	N	O			
3	D	2	28	16	2	10	0	0	0
3	F	2	28	16	2	10	0	0	0

- Molecule 4 is an oligosaccharide called alpha-D-mannopyranose-(1-4)-alpha-D-mannopyranose-(1-4)-2-acetamido-2-deoxy-beta-D-glucopyranose-(1-4)-2-acetamido-2-deoxy-beta-D-glucopyranose.



Mol	Chain	Residues	Atoms				ZeroOcc	AltConf	Trace
			Total	C	N	O			
4	E	4	50	28	2	20	0	0	0

- Molecule 5 is 2-acetamido-2-deoxy-beta-D-glucopyranose (CCD ID: NAG) (formula: C₈H₁₅NO₆).



Mol	Chain	Residues	Atoms				ZeroOcc	AltConf
			Total	C	N	O		
5	A	1	14	8	1	5	0	0
5	A	1	14	8	1	5	0	0
5	A	1	14	8	1	5	0	0
5	A	1	14	8	1	5	0	0
5	A	1	14	8	1	5	0	0
5	A	1	14	8	1	5	0	0
5	A	1	14	8	1	5	0	0
5	B	1	14	8	1	5	0	0
5	B	1	14	8	1	5	0	0

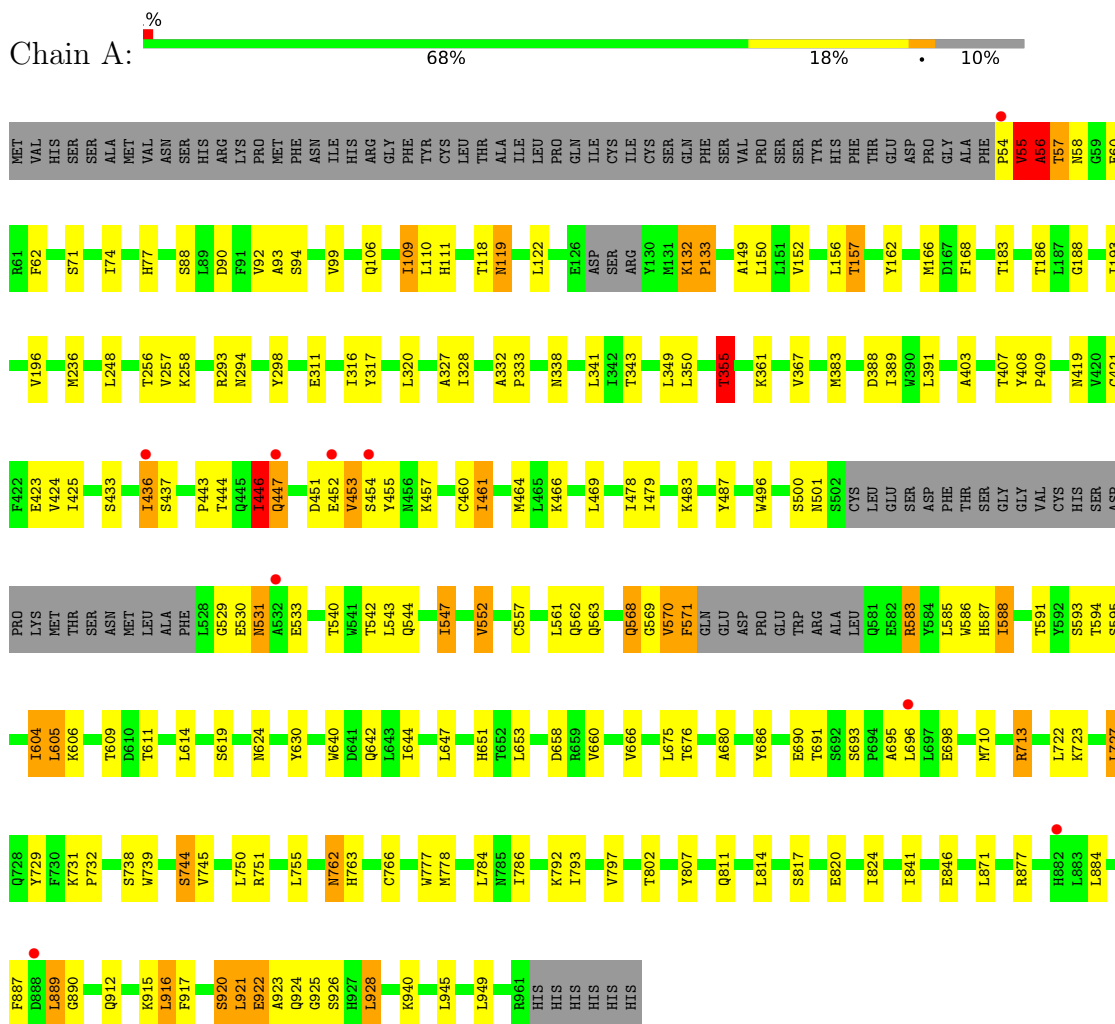
- Molecule 6 is water.

Mol	Chain	Residues	Atoms		ZeroOcc	AltConf
			Total	O		
6	A	109	109	109	0	0
6	B	84	84	84	0	0

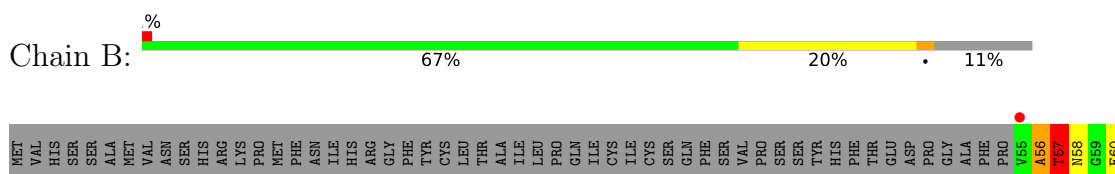
3 Residue-property plots [i](#)

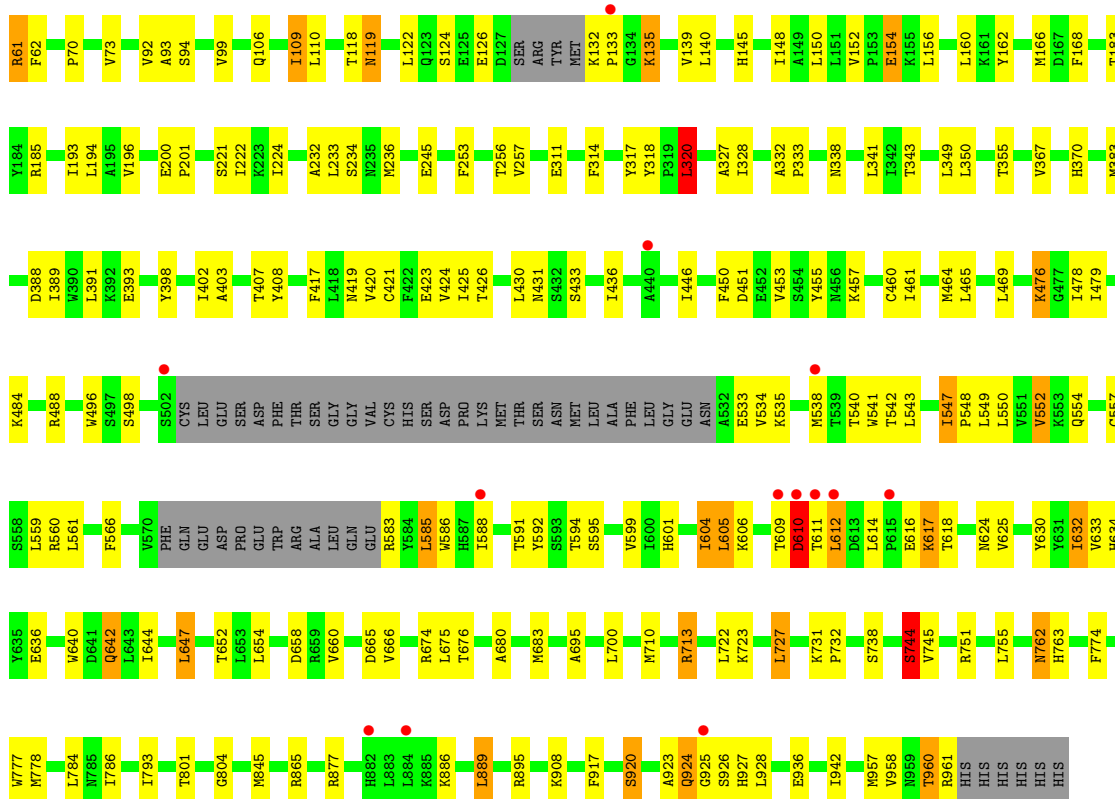
These plots are drawn for all protein, RNA, DNA and oligosaccharide chains in the entry. The first graphic for a chain summarises the proportions of the various outlier classes displayed in the second graphic. The second graphic shows the sequence view annotated by issues in geometry and electron density. Residues are color-coded according to the number of geometric quality criteria for which they contain at least one outlier: green = 0, yellow = 1, orange = 2 and red = 3 or more. A red dot above a residue indicates a poor fit to the electron density ($RSRZ > 2$). Stretches of 2 or more consecutive residues without any outlier are shown as a green connector. Residues present in the sample, but not in the model, are shown in grey.

- Molecule 1: Endoplasmic reticulum aminopeptidase 2



- Molecule 1: Endoplasmic reticulum aminopeptidase 2





- Molecule 2: alpha-D-mannopyranose-(1-4)-2-acetamido-2-deoxy-beta-D-glucopyranose-(1-4)-2-acetamido-2-deoxy-beta-D-glucopyranose

Chain C: 67% 33%

MAG1
MAG2
MAN3

- Molecule 3: 2-acetamido-2-deoxy-beta-D-glucopyranose-(1-4)-2-acetamido-2-deoxy-beta-D-glucopyranose

Chain D: 50% 50%

MAG1
MAG2

- Molecule 3: 2-acetamido-2-deoxy-beta-D-glucopyranose-(1-4)-2-acetamido-2-deoxy-beta-D-glucopyranose

Chain F: 100%

MAG1
MAG2

- Molecule 4: alpha-D-mannopyranose-(1-4)-alpha-D-mannopyranose-(1-4)-2-acetamido-2-deoxy-beta-D-glucopyranose-(1-4)-2-acetamido-2-deoxy-beta-D-glucopyranose

Chain E:



4 Data and refinement statistics

Property	Value	Source
Space group	P 1 21 1	Depositor
Cell constants a, b, c, α , β , γ	74.65Å 135.17Å 126.49Å 90.00° 90.74° 90.00°	Depositor
Resolution (Å)	48.56 – 3.02 48.56 – 3.02	Depositor EDS
% Data completeness (in resolution range)	99.9 (48.56-3.02) 100.0 (48.56-3.02)	Depositor EDS
R_{merge}	0.14	Depositor
R_{sym}	(Not available)	Depositor
$\langle I/\sigma(I) \rangle$ ¹	2.18 (at 3.01Å)	Xtrriage
Refinement program	PHENIX 1.8.4_1496	Depositor
R, R_{free}	0.210 , 0.263 0.211 , 0.258	Depositor DCC
R_{free} test set	2497 reflections (5.06%)	wwPDB-VP
Wilson B-factor (Å ²)	67.8	Xtrriage
Anisotropy	0.576	Xtrriage
Bulk solvent k_{sol} (e/Å ³), B_{sol} (Å ²)	0.29 , 48.0	EDS
L-test for twinning ²	$\langle L \rangle = 0.48$, $\langle L^2 \rangle = 0.31$	Xtrriage
Estimated twinning fraction	0.032 for h,-k,-l	Xtrriage
F_o, F_c correlation	0.93	EDS
Total number of atoms	14562	wwPDB-VP
Average B, all atoms (Å ²)	76.0	wwPDB-VP

Xtrriage's analysis on translational NCS is as follows: *The largest off-origin peak in the Patterson function is 3.29% of the height of the origin peak. No significant pseudotranslation is detected.*

¹Intensities estimated from amplitudes.

²Theoretical values of $\langle |L| \rangle$, $\langle L^2 \rangle$ for acentric reflections are 0.5, 0.333 respectively for untwinned datasets, and 0.375, 0.2 for perfectly twinned datasets.

5 Model quality [i](#)

5.1 Standard geometry [i](#)

Bond lengths and bond angles in the following residue types are not validated in this section: NAG, MAN

The Z score for a bond length (or angle) is the number of standard deviations the observed value is removed from the expected value. A bond length (or angle) with $|Z| > 5$ is considered an outlier worth inspection. RMSZ is the root-mean-square of all Z scores of the bond lengths (or angles).

Mol	Chain	Bond lengths		Bond angles	
		RMSZ	# Z >5	RMSZ	# Z >5
1	A	0.63	1/7266 (0.0%)	0.94	8/9844 (0.1%)
1	B	0.64	0/7179	0.95	8/9726 (0.1%)
All	All	0.64	1/14445 (0.0%)	0.94	16/19570 (0.1%)

Chiral center outliers are detected by calculating the chiral volume of a chiral center and verifying if the center is modelled as a planar moiety or with the opposite hand. A planarity outlier is detected by checking planarity of atoms in a peptide group, atoms in a mainchain group or atoms of a sidechain that are expected to be planar.

Mol	Chain	#Chirality outliers	#Planarity outliers
1	A	0	5

All (1) bond length outliers are listed below:

Mol	Chain	Res	Type	Atoms	Z	Observed(Å)	Ideal(Å)
1	A	56	ALA	CA-C	5.32	1.59	1.52

The worst 5 of 16 bond angle outliers are listed below:

Mol	Chain	Res	Type	Atoms	Z	Observed(°)	Ideal(°)
1	B	56	ALA	N-CA-C	9.37	122.28	108.60
1	B	713	ARG	N-CA-C	-6.93	101.38	110.53
1	A	713	ARG	N-CA-C	-6.93	101.38	110.53
1	A	367	VAL	CB-CA-C	-6.87	103.03	112.24
1	A	55	VAL	N-CA-C	6.82	123.53	109.34

There are no chirality outliers.

All (5) planarity outliers are listed below:

Mol	Chain	Res	Type	Group
1	A	530	GLU	Peptide
1	A	531	ASN	Peptide
1	A	56	ALA	Peptide
1	A	921	LEU	Peptide
1	A	922	GLU	Peptide

5.2 Too-close contacts [i](#)

In the following table, the Non-H and H(model) columns list the number of non-hydrogen atoms and hydrogen atoms in the chain respectively. The H(added) column lists the number of hydrogen atoms added and optimized by MolProbity. The Clashes column lists the number of clashes within the asymmetric unit, whereas Symm-Clashes lists symmetry-related clashes.

Mol	Chain	Non-H	H(model)	H(added)	Clashes	Symm-Clashes
1	A	7089	0	7041	149	1
1	B	7009	0	6979	189	1
2	C	39	0	34	1	0
3	D	28	0	25	1	0
3	F	28	0	25	0	0
4	E	50	0	43	2	0
5	A	98	0	90	9	0
5	B	28	0	26	1	0
6	A	109	0	0	11	0
6	B	84	0	0	39	0
All	All	14562	0	14263	342	1

The all-atom clashscore is defined as the number of clashes found per 1000 atoms (including hydrogen atoms). The all-atom clashscore for this structure is 12.

The worst 5 of 342 close contacts within the same asymmetric unit are listed below, sorted by their clash magnitude.

Atom-1	Atom-2	Interatomic distance (Å)	Clash overlap (Å)
1:B:224:ILE:CD1	1:B:232:ALA:HB1	1.38	1.49
1:B:224:ILE:CD1	1:B:232:ALA:CB	1.96	1.41
1:B:224:ILE:HD12	1:B:232:ALA:CB	1.53	1.37
1:B:610:ASP:O	1:B:611:THR:HG22	1.09	1.22
1:B:611:THR:OG1	1:B:612:LEU:CB	1.91	1.18

All (1) symmetry-related close contacts are listed below. The label for Atom-2 includes the symmetry operator and encoded unit-cell translations to be applied.

Atom-1	Atom-2	Interatomic distance (Å)	Clash overlap (Å)
1:A:531:ASN:ND2	1:B:585:LEU:CD1[1_554]	1.90	0.30

5.3 Torsion angles [i](#)

5.3.1 Protein backbone [i](#)

In the following table, the Percentiles column shows the percent Ramachandran outliers of the chain as a percentile score with respect to all X-ray entries followed by that with respect to entries of similar resolution.

The Analysed column shows the number of residues for which the backbone conformation was analysed, and the total number of residues.

Mol	Chain	Analysed	Favoured	Allowed	Outliers	Percentiles	
1	A	864/967 (89%)	793 (92%)	57 (7%)	14 (2%)	7	32
1	B	854/967 (88%)	787 (92%)	55 (6%)	12 (1%)	9	34
All	All	1718/1934 (89%)	1580 (92%)	112 (6%)	26 (2%)	8	33

5 of 26 Ramachandran outliers are listed below:

Mol	Chain	Res	Type
1	A	119	ASN
1	A	605	LEU
1	B	119	ASN
1	B	605	LEU
1	A	583	ARG

5.3.2 Protein sidechains [i](#)

In the following table, the Percentiles column shows the percent sidechain outliers of the chain as a percentile score with respect to all X-ray entries followed by that with respect to entries of similar resolution.

The Analysed column shows the number of residues for which the sidechain conformation was analysed, and the total number of residues.

Mol	Chain	Analysed	Rotameric	Outliers	Percentiles	
1	A	782/870 (90%)	719 (92%)	63 (8%)	11	36
1	B	774/870 (89%)	710 (92%)	64 (8%)	10	35
All	All	1556/1740 (89%)	1429 (92%)	127 (8%)	10	36

5 of 127 residues with a non-rotameric sidechain are listed below:

Mol	Chain	Res	Type
1	A	889	LEU
1	B	625	VAL
1	B	135	LYS
1	B	617	LYS
1	B	744	SER

Sometimes sidechains can be flipped to improve hydrogen bonding and reduce clashes. 5 of 33 such sidechains are listed below:

Mol	Chain	Res	Type
1	B	501	ASN
1	B	785	ASN
1	B	959	ASN
1	A	800	GLN
1	A	601	HIS

5.3.3 RNA [i](#)

There are no RNA molecules in this entry.

5.4 Non-standard residues in protein, DNA, RNA chains [i](#)

There are no non-standard protein/DNA/RNA residues in this entry.

5.5 Carbohydrates [i](#)

11 monosaccharides are modelled in this entry.

In the following table, the Counts columns list the number of bonds (or angles) for which Mogul statistics could be retrieved, the number of bonds (or angles) that are observed in the model and the number of bonds (or angles) that are defined in the Chemical Component Dictionary. The Link column lists molecule types, if any, to which the group is linked. The Z score for a bond length (or angle) is the number of standard deviations the observed value is removed from the expected value. A bond length (or angle) with $|Z| > 2$ is considered an outlier worth inspection. RMSZ is the root-mean-square of all Z scores of the bond lengths (or angles).

Mol	Type	Chain	Res	Link	Bond lengths			Bond angles		
					Counts	RMSZ	# Z > 2	Counts	RMSZ	# Z > 2
2	NAG	C	1	1,2	14,14,15	0.61	0	17,19,21	1.73	2 (11%)
2	NAG	C	2	2	14,14,15	0.71	1 (7%)	17,19,21	1.70	5 (29%)

Mol	Type	Chain	Res	Link	Bond lengths			Bond angles		
					Counts	RMSZ	# Z > 2	Counts	RMSZ	# Z > 2
2	MAN	C	3	2	11,11,12	0.51	0	15,15,17	1.57	3 (20%)
3	NAG	D	1	1,3	14,14,15	0.59	0	17,19,21	1.11	1 (5%)
3	NAG	D	2	3	14,14,15	0.55	0	17,19,21	1.18	2 (11%)
4	NAG	E	1	1,4	14,14,15	0.73	0	17,19,21	2.15	3 (17%)
4	NAG	E	2	4	14,14,15	0.54	0	17,19,21	1.96	5 (29%)
4	MAN	E	3	4	11,11,12	0.65	0	15,15,17	1.51	4 (26%)
4	MAN	E	4	4	11,11,12	0.52	0	15,15,17	2.20	3 (20%)
3	NAG	F	1	1,3	14,14,15	0.59	0	17,19,21	1.06	1 (5%)
3	NAG	F	2	3	14,14,15	0.66	0	17,19,21	1.39	3 (17%)

In the following table, the Chirals column lists the number of chiral outliers, the number of chiral centers analysed, the number of these observed in the model and the number defined in the Chemical Component Dictionary. Similar counts are reported in the Torsion and Rings columns. '-' means no outliers of that kind were identified.

Mol	Type	Chain	Res	Link	Chirals	Torsions	Rings
2	NAG	C	1	1,2	-	2/6/23/26	0/1/1/1
2	NAG	C	2	2	-	3/6/23/26	0/1/1/1
2	MAN	C	3	2	-	0/2/19/22	0/1/1/1
3	NAG	D	1	1,3	-	2/6/23/26	0/1/1/1
3	NAG	D	2	3	-	2/6/23/26	0/1/1/1
4	NAG	E	1	1,4	-	2/6/23/26	0/1/1/1
4	NAG	E	2	4	-	2/6/23/26	0/1/1/1
4	MAN	E	3	4	-	0/2/19/22	0/1/1/1
4	MAN	E	4	4	-	2/2/19/22	0/1/1/1
3	NAG	F	1	1,3	-	2/6/23/26	0/1/1/1
3	NAG	F	2	3	-	0/6/23/26	0/1/1/1

All (1) bond length outliers are listed below:

Mol	Chain	Res	Type	Atoms	Z	Observed(Å)	Ideal(Å)
2	C	2	NAG	C1-C2	2.03	1.55	1.52

The worst 5 of 32 bond angle outliers are listed below:

Mol	Chain	Res	Type	Atoms	Z	Observed(°)	Ideal(°)
4	E	4	MAN	C1-O5-C5	7.11	121.71	112.19
4	E	1	NAG	C1-O5-C5	7.04	121.63	112.19

Continued on next page...

Continued from previous page...

Mol	Chain	Res	Type	Atoms	Z	Observed(°)	Ideal(°)
2	C	1	NAG	C1-O5-C5	5.12	119.05	112.19
2	C	3	MAN	C1-O5-C5	4.18	117.79	112.19
4	E	2	NAG	C1-O5-C5	4.14	117.73	112.19

There are no chirality outliers.

5 of 17 torsion outliers are listed below:

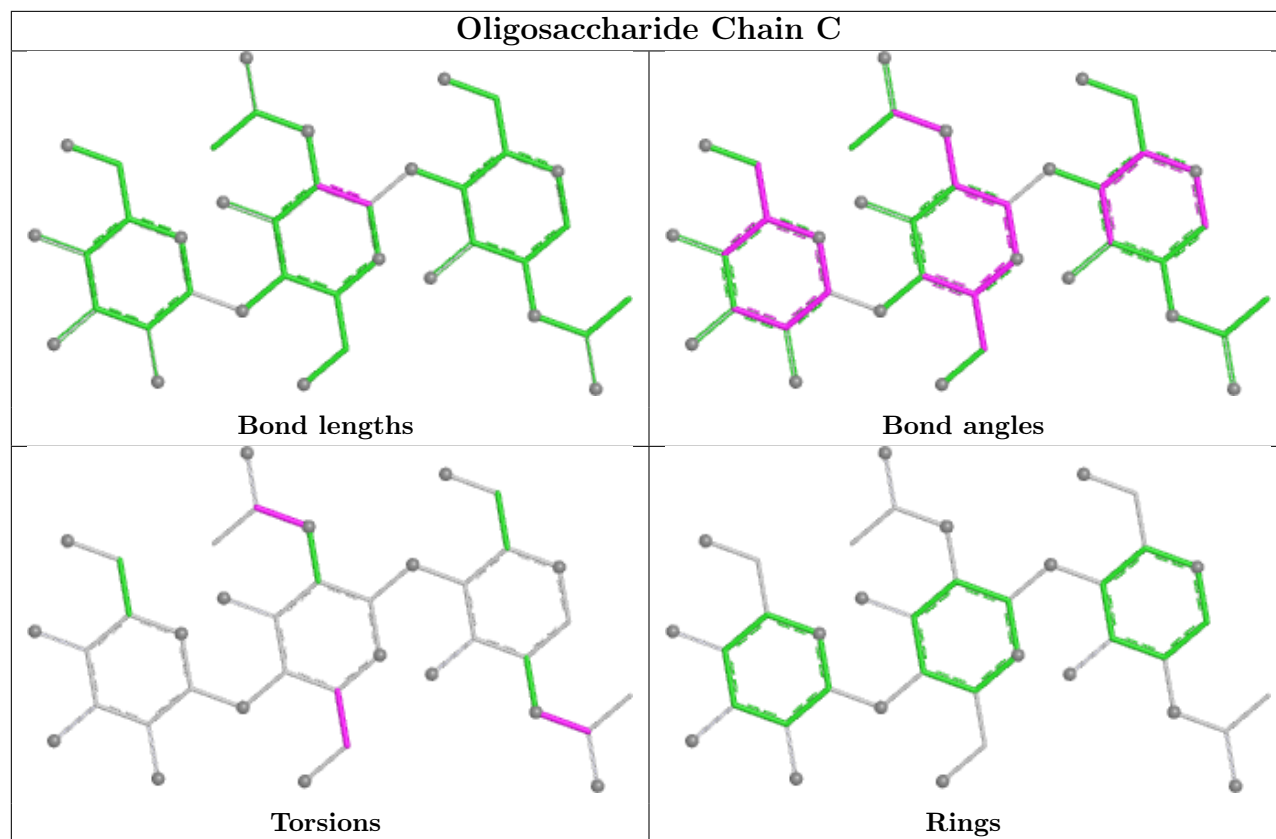
Mol	Chain	Res	Type	Atoms
3	D	2	NAG	O7-C7-N2-C2
3	D	2	NAG	C8-C7-N2-C2
4	E	4	MAN	C4-C5-C6-O6
4	E	4	MAN	O5-C5-C6-O6
2	C	2	NAG	C8-C7-N2-C2

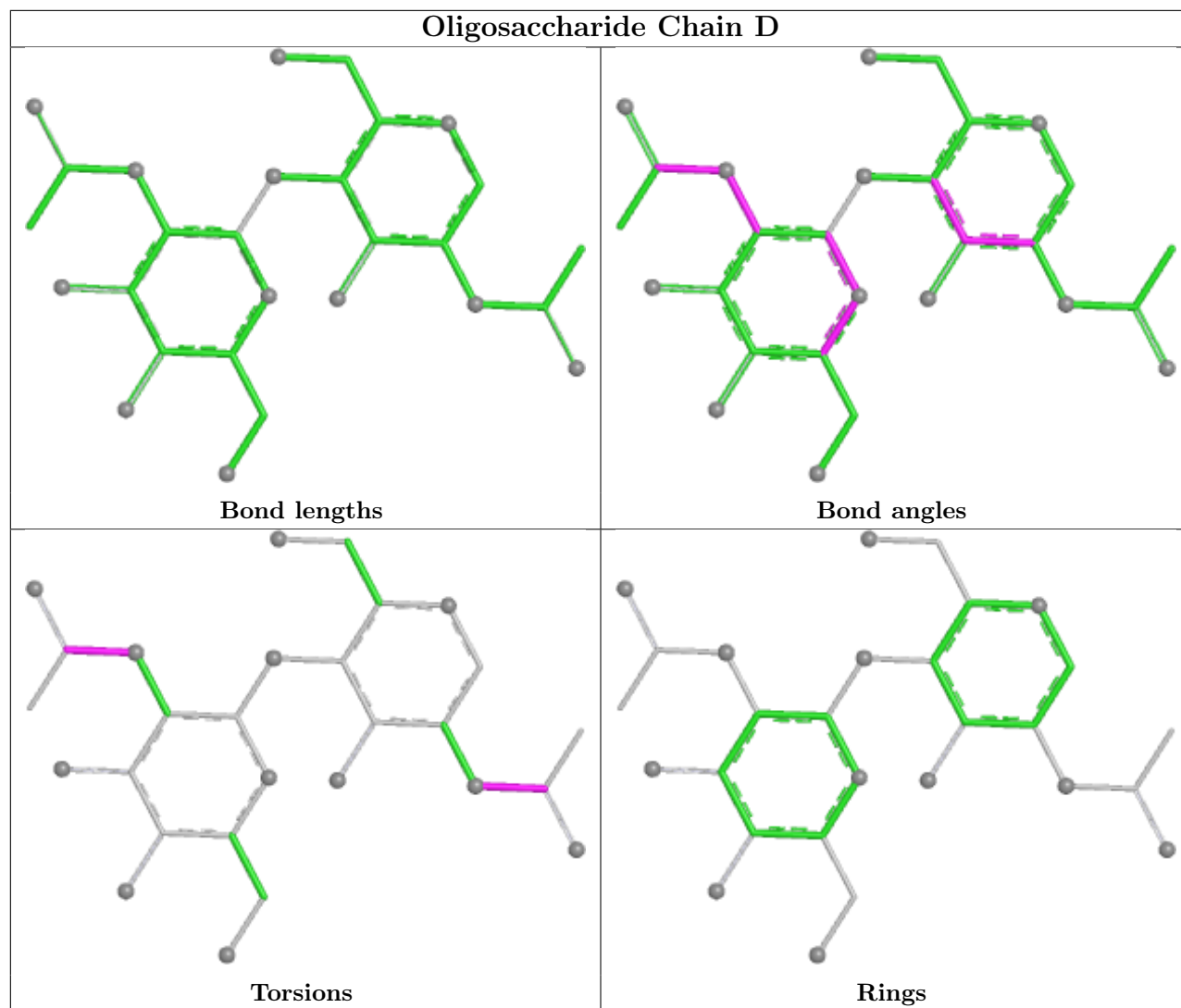
There are no ring outliers.

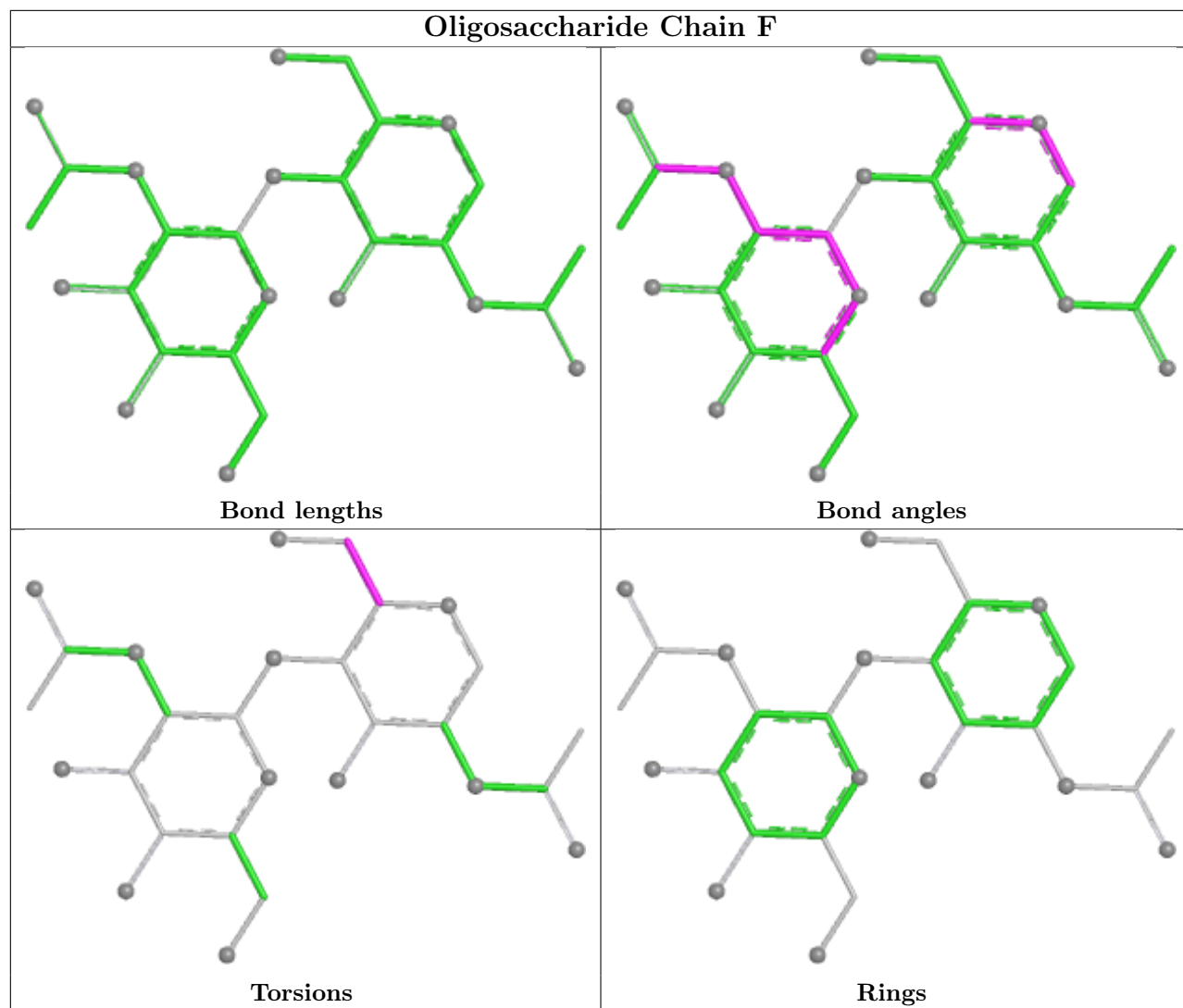
4 monomers are involved in 4 short contacts:

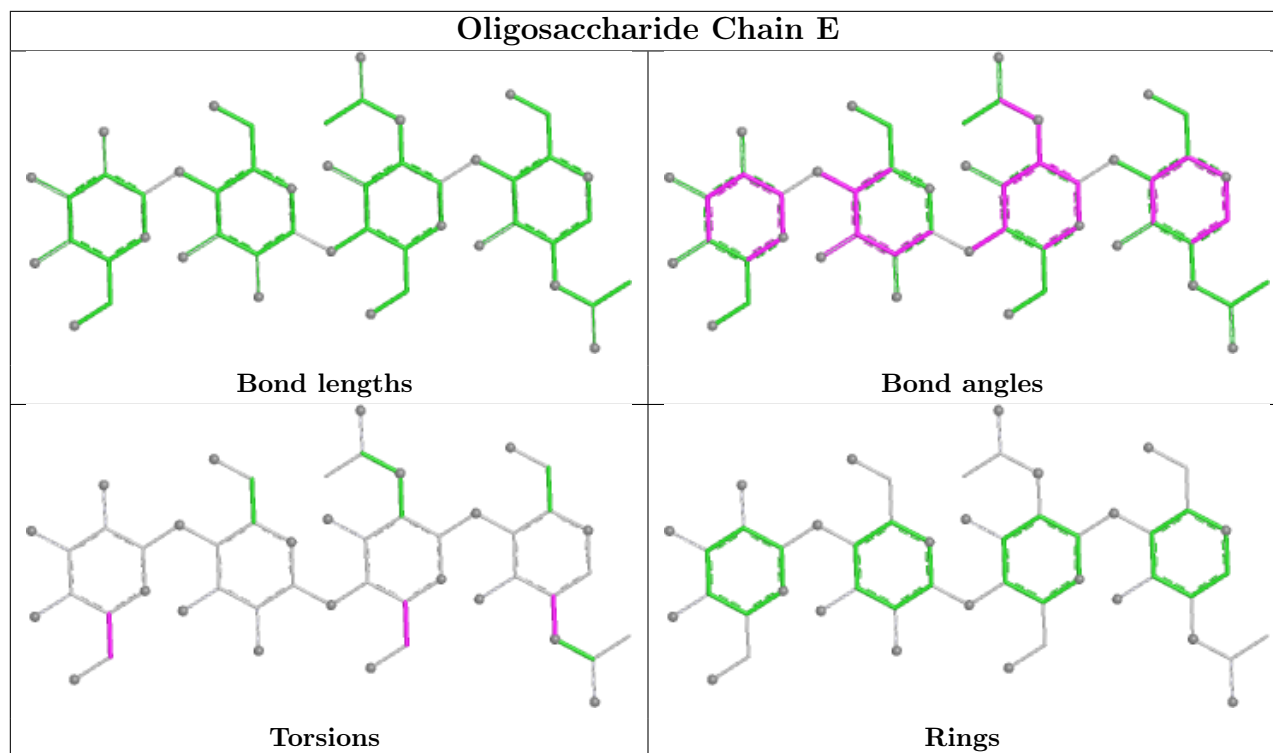
Mol	Chain	Res	Type	Clashes	Symm-Clashes
4	E	4	MAN	1	0
3	D	1	NAG	1	0
2	C	1	NAG	1	0
4	E	3	MAN	2	0

The following is a two-dimensional graphical depiction of Mogul quality analysis of bond lengths, bond angles, torsion angles, and ring geometry for oligosaccharide.









5.6 Ligand geometry [i](#)

9 ligands are modelled in this entry.

In the following table, the Counts columns list the number of bonds (or angles) for which Mogul statistics could be retrieved, the number of bonds (or angles) that are observed in the model and the number of bonds (or angles) that are defined in the Chemical Component Dictionary. The Link column lists molecule types, if any, to which the group is linked. The Z score for a bond length (or angle) is the number of standard deviations the observed value is removed from the expected value. A bond length (or angle) with $|Z| > 2$ is considered an outlier worth inspection. RMSZ is the root-mean-square of all Z scores of the bond lengths (or angles).

Mol	Type	Chain	Res	Link	Bond lengths			Bond angles		
					Counts	RMSZ	# Z > 2	Counts	RMSZ	# Z > 2
5	NAG	A	1010	1	14,14,15	0.85	1 (7%)	17,19,21	2.27	2 (11%)
5	NAG	A	1012	1	14,14,15	0.90	1 (7%)	17,19,21	0.53	0
5	NAG	A	1006	1	14,14,15	0.43	0	17,19,21	1.70	4 (23%)
5	NAG	A	1011	1	14,14,15	0.74	0	17,19,21	0.76	0
5	NAG	A	1009	1	14,14,15	0.68	0	17,19,21	0.92	1 (5%)
5	NAG	B	1007	1	14,14,15	0.82	0	17,19,21	1.07	1 (5%)
5	NAG	A	1007	1	14,14,15	0.58	0	17,19,21	0.61	0
5	NAG	B	1008	1	14,14,15	0.59	0	17,19,21	1.09	1 (5%)
5	NAG	A	1008	1	14,14,15	0.56	0	17,19,21	1.96	4 (23%)

In the following table, the Chirals column lists the number of chiral outliers, the number of chiral centers analysed, the number of these observed in the model and the number defined in the Chemical Component Dictionary. Similar counts are reported in the Torsion and Rings columns. '-' means no outliers of that kind were identified.

Mol	Type	Chain	Res	Link	Chirals	Torsions	Rings
5	NAG	A	1010	1	-	4/6/23/26	0/1/1/1
5	NAG	A	1012	1	-	2/6/23/26	0/1/1/1
5	NAG	A	1006	1	-	0/6/23/26	0/1/1/1
5	NAG	A	1011	1	-	2/6/23/26	0/1/1/1
5	NAG	A	1009	1	-	2/6/23/26	0/1/1/1
5	NAG	B	1007	1	-	2/6/23/26	0/1/1/1
5	NAG	A	1007	1	-	2/6/23/26	0/1/1/1
5	NAG	B	1008	1	-	0/6/23/26	0/1/1/1
5	NAG	A	1008	1	-	3/6/23/26	0/1/1/1

All (2) bond length outliers are listed below:

Mol	Chain	Res	Type	Atoms	Z	Observed(Å)	Ideal(Å)
5	A	1010	NAG	C1-C2	2.54	1.55	1.52
5	A	1012	NAG	C1-C2	2.02	1.55	1.52

The worst 5 of 13 bond angle outliers are listed below:

Mol	Chain	Res	Type	Atoms	Z	Observed(°)	Ideal(°)
5	A	1010	NAG	C1-O5-C5	7.79	122.63	112.19
5	A	1008	NAG	C1-O5-C5	5.71	119.84	112.19
5	A	1006	NAG	C1-O5-C5	4.85	118.69	112.19
5	A	1010	NAG	O5-C1-C2	3.20	116.24	111.29
5	A	1008	NAG	O5-C1-C2	3.19	116.22	111.29

There are no chirality outliers.

5 of 17 torsion outliers are listed below:

Mol	Chain	Res	Type	Atoms
5	A	1008	NAG	C8-C7-N2-C2
5	A	1008	NAG	O7-C7-N2-C2
5	A	1010	NAG	C8-C7-N2-C2
5	A	1010	NAG	O7-C7-N2-C2
5	A	1012	NAG	O5-C5-C6-O6

There are no ring outliers.

4 monomers are involved in 10 short contacts:

Mol	Chain	Res	Type	Clashes	Symm-Clashes
5	A	1012	NAG	1	0
5	A	1006	NAG	2	0
5	A	1011	NAG	6	0
5	B	1007	NAG	1	0

5.7 Other polymers [i](#)

There are no such residues in this entry.

5.8 Polymer linkage issues [i](#)

There are no chain breaks in this entry.

6 Fit of model and data [i](#)

6.1 Protein, DNA and RNA chains [i](#)

In the following table, the column labelled '#RSRZ > 2' contains the number (and percentage) of RSRZ outliers, followed by percent RSRZ outliers for the chain as percentile scores relative to all X-ray entries and entries of similar resolution. The OWAB column contains the minimum, median, 95th percentile and maximum values of the occupancy-weighted average B-factor per residue. The column labelled 'Q < 0.9' lists the number of (and percentage) of residues with an average occupancy less than 0.9.

Mol	Chain	Analysed	<RSRZ>	#RSRZ>2	OWAB(Å ²)	Q<0.9
1	A	871/967 (90%)	-0.15	9 (1%) 79 59	33, 69, 108, 146	1 (0%)
1	B	862/967 (89%)	0.01	14 (1%) 70 47	20, 78, 116, 135	0
All	All	1733/1934 (89%)	-0.07	23 (1%) 75 53	20, 73, 113, 146	1 (0%)

The worst 5 of 23 RSRZ outliers are listed below:

Mol	Chain	Res	Type	RSRZ
1	B	611	THR	8.7
1	B	610	ASP	5.5
1	A	54	PRO	3.8
1	B	612	LEU	3.7
1	B	502	SER	3.1

6.2 Non-standard residues in protein, DNA, RNA chains [i](#)

There are no non-standard protein/DNA/RNA residues in this entry.

6.3 Carbohydrates [i](#)

In the following table, the Atoms column lists the number of modelled atoms in the group and the number defined in the chemical component dictionary. The B-factors column lists the minimum, median, 95th percentile and maximum values of B factors of atoms in the group. The column labelled 'Q < 0.9' lists the number of atoms with occupancy less than 0.9.

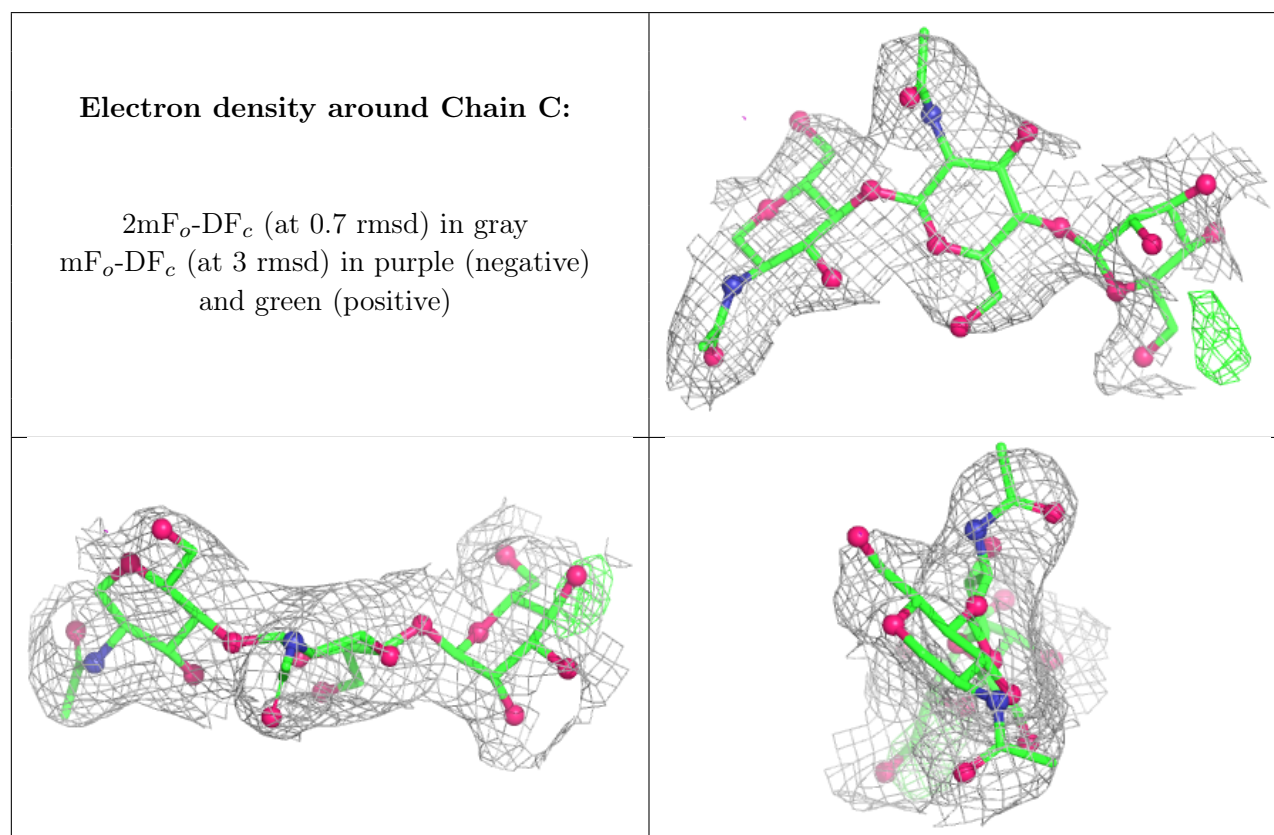
Mol	Type	Chain	Res	Atoms	RSCC	RSR	B-factors(Å ²)	Q<0.9
4	MAN	E	3	11/12	0.43	0.13	100,151,166,167	0
4	MAN	E	4	11/12	0.48	0.13	106,144,168,193	0
2	MAN	C	3	11/12	0.53	0.12	81,145,174,188	0
3	NAG	F	2	14/15	0.83	0.12	89,120,146,147	0
3	NAG	D	2	14/15	0.86	0.10	46,103,145,150	0

Continued on next page...

Continued from previous page...

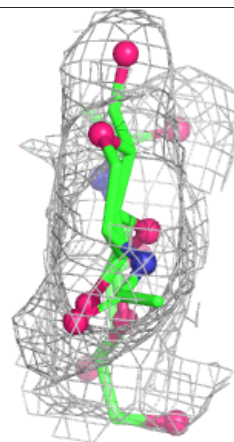
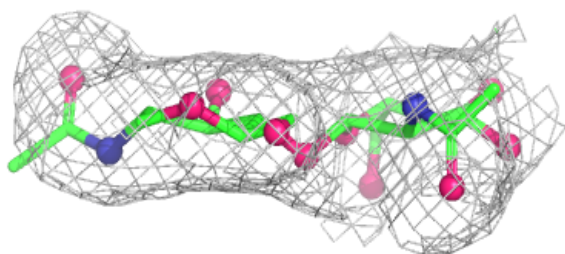
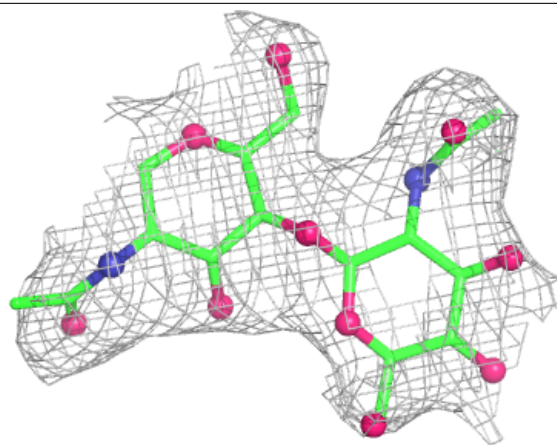
Mol	Type	Chain	Res	Atoms	RSCC	RSR	B-factors(\AA^2)	Q<0.9
3	NAG	F	1	14/15	0.87	0.09	55,102,112,134	0
2	NAG	C	2	14/15	0.87	0.10	69,100,122,136	0
4	NAG	E	1	14/15	0.88	0.11	26,88,112,113	0
4	NAG	E	2	14/15	0.92	0.10	99,122,163,191	0
2	NAG	C	1	14/15	0.92	0.10	40,70,99,123	0
3	NAG	D	1	14/15	0.92	0.10	46,67,83,93	0

The following is a graphical depiction of the model fit to experimental electron density for oligosaccharide. Each fit is shown from different orientation to approximate a three-dimensional view.



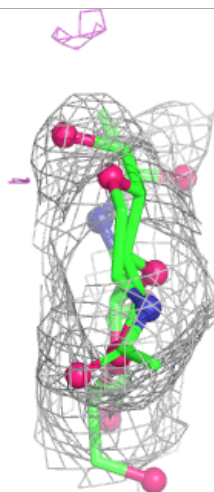
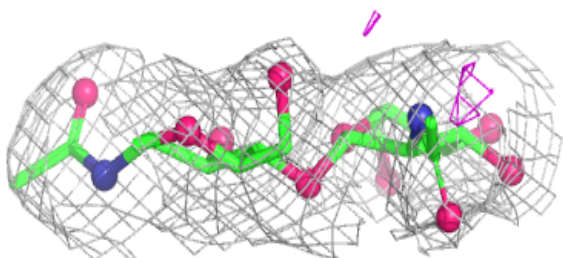
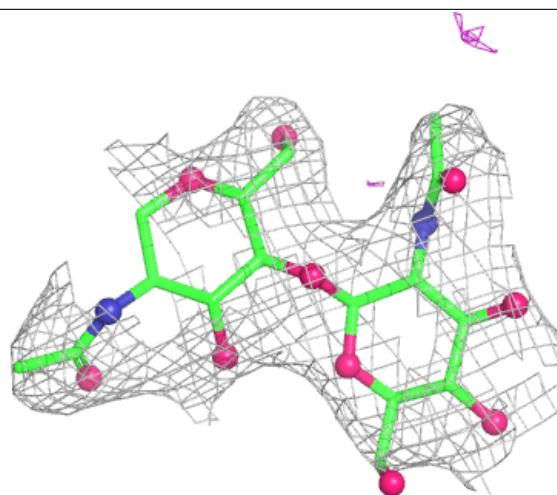
Electron density around Chain D:

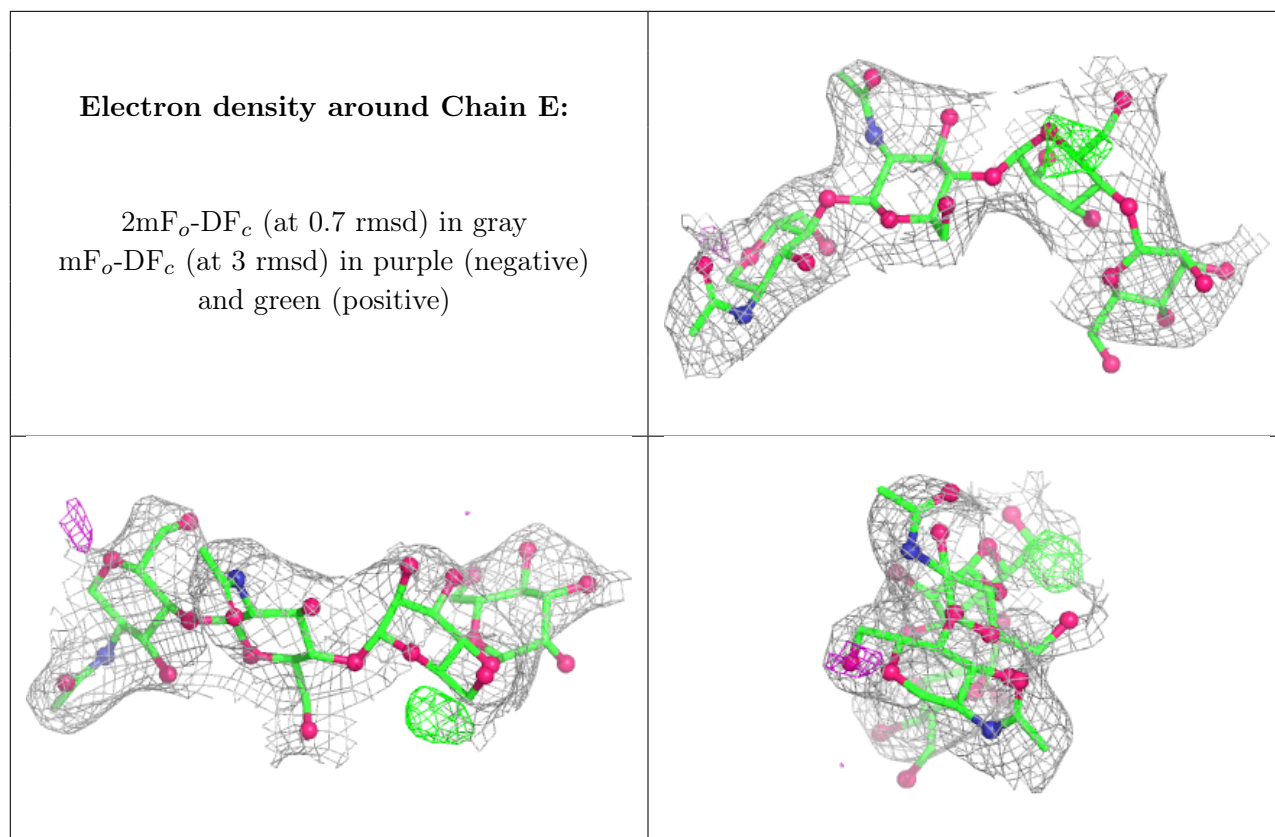
$2mF_o-DF_c$ (at 0.7 rmsd) in gray
 mF_o-DF_c (at 3 rmsd) in purple (negative)
and green (positive)



Electron density around Chain F:

$2mF_o-DF_c$ (at 0.7 rmsd) in gray
 mF_o-DF_c (at 3 rmsd) in purple (negative)
and green (positive)





6.4 Ligands [i](#)

In the following table, the Atoms column lists the number of modelled atoms in the group and the number defined in the chemical component dictionary. The B-factors column lists the minimum, median, 95th percentile and maximum values of B factors of atoms in the group. The column labelled 'Q< 0.9' lists the number of atoms with occupancy less than 0.9.

Mol	Type	Chain	Res	Atoms	RSCC	RSR	B-factors(Å ²)	Q<0.9
5	NAG	A	1009	14/15	0.42	0.16	92,170,183,186	0
5	NAG	B	1007	14/15	0.51	0.12	125,162,193,205	0
5	NAG	B	1008	14/15	0.56	0.12	72,135,184,187	0
5	NAG	A	1010	14/15	0.57	0.14	103,153,172,186	0
5	NAG	A	1008	14/15	0.68	0.16	109,152,178,178	0
5	NAG	A	1011	14/15	0.68	0.14	114,133,166,168	0
5	NAG	A	1012	14/15	0.70	0.10	109,156,196,208	0
5	NAG	A	1007	14/15	0.84	0.12	80,133,164,185	0
5	NAG	A	1006	14/15	0.88	0.11	84,132,146,148	0

6.5 Other polymers [i](#)

There are no such residues in this entry.