



Full wwPDB X-ray Structure Validation Report ⓘ

Mar 9, 2026 – 08:30 PM UTC

PDB ID : 6CUP / pdb_00006cup
Title : Ras:SOS:Ras in complex with a small molecule activator
Authors : Phan, J.; Abbott, J.; Fesik, S.W.
Deposited on : 2018-03-26
Resolution : 1.83 Å(reported)

This is a Full wwPDB X-ray Structure Validation Report for a publicly released PDB entry.

We welcome your comments at validation@mail.wwpdb.org

A user guide is available at

<https://www.wwpdb.org/validation/2017/XrayValidationReportHelp>

with specific help available everywhere you see the ⓘ symbol.

The types of validation reports are described at

<http://www.wwpdb.org/validation/2017/FAQs#types>.

The following versions of software and data (see [references ⓘ](#)) were used in the production of this report:

MolProbity : 4-5-2 with Phenix2.0
Mogul : 2022.3.0, CSD as543be (2022)
Xtriage (Phenix) : 2.0
EDS : 3.0
Buster-report : wwPDB partial adaption of 1.1.7 (2018)
Percentile statistics : 20250101.v01 (using entries in the PDB archive January 1st 2025)
CCP4 : 9.0.010 (Gargrove)
Density-Fitness : 1.0.12
Ideal geometry (proteins) : Engh & Huber (2001)
Ideal geometry (DNA, RNA) : Parkinson et al. (1996)
Validation Pipeline (wwPDB-VP) : 2.49

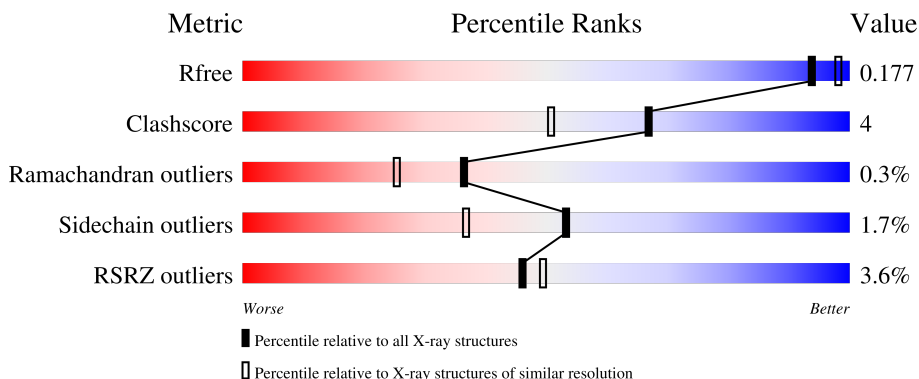
1 Overall quality at a glance

The following experimental techniques were used to determine the structure:

X-RAY DIFFRACTION

The reported resolution of this entry is 1.83 Å.

Percentile scores (ranging between 0-100) for global validation metrics of the entry are shown in the following graphic. The table shows the number of entries on which the scores are based.



Metric	Whole archive (#Entries)	Similar resolution (#Entries, resolution range(Å))
R_{free}	180053	1296 (1.84-1.84)
Clashscore	190562	1329 (1.84-1.84)
Ramachandran outliers	187476	1318 (1.84-1.84)
Sidechain outliers	187428	1318 (1.84-1.84)
RSRZ outliers	180081	1296 (1.84-1.84)

The table below summarises the geometric issues observed across the polymeric chains and their fit to the electron density. The red, orange, yellow and green segments of the lower bar indicate the fraction of residues that contain outliers for ≥ 3 , 2, 1 and 0 types of geometric quality criteria respectively. A grey segment represents the fraction of residues that are not modelled. The numeric value for each fraction is indicated below the corresponding segment, with a dot representing fractions $\leq 5\%$. The upper red bar (where present) indicates the fraction of residues that have poor fit to the electron density. The numeric value is given above the bar.

Mol	Chain	Length	Quality of chain
1	A	167	 91% 8% ..
2	B	482	 90% 7% .
3	C	167	 85% 13% .

The following table lists non-polymeric compounds, carbohydrate monomers and non-standard residues in protein, DNA, RNA chains that are outliers for geometric or electron-density-fit criteria:

Mol	Type	Chain	Res	Chirality	Geometry	Clashes	Electron density
7	FMT	C	201	-	-	X	-

2 Entry composition

There are 10 unique types of molecules in this entry. The entry contains 7864 atoms, of which 0 are hydrogens and 0 are deuteriums.

In the tables below, the ZeroOcc column contains the number of atoms modelled with zero occupancy, the AltConf column contains the number of residues with at least one atom in alternate conformation and the Trace column contains the number of residues modelled with at most 2 atoms.

- Molecule 1 is a protein called GTPase HRas.

Mol	Chain	Residues	Atoms					ZeroOcc	AltConf	Trace
			Total	C	N	O	S			
1	A	166	1395	863	242	282	8	0	9	0

There are 2 discrepancies between the modelled and reference sequences:

Chain	Residue	Modelled	Actual	Comment	Reference
A	0	GLY	-	expression tag	UNP P01112
A	64	ALA	TYR	engineered mutation	UNP P01112

- Molecule 2 is a protein called Son of sevenless homolog 1.

Mol	Chain	Residues	Atoms					ZeroOcc	AltConf	Trace
			Total	C	N	O	S			
2	B	469	4042	2587	701	741	13	0	18	0

There is a discrepancy between the modelled and reference sequences:

Chain	Residue	Modelled	Actual	Comment	Reference
B	565	GLY	-	expression tag	UNP Q07889

- Molecule 3 is a protein called GTPase HRas.

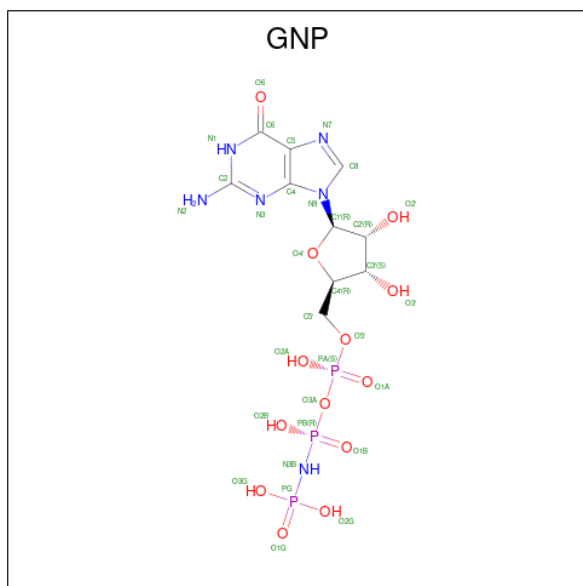
Mol	Chain	Residues	Atoms					ZeroOcc	AltConf	Trace
			Total	C	N	O	S			
3	C	167	1366	850	235	274	7	0	5	0

There is a discrepancy between the modelled and reference sequences:

Chain	Residue	Modelled	Actual	Comment	Reference
C	0	GLY	-	expression tag	UNP P01112

- Molecule 4 is PHOSPHOAMINOPHOSPHONIC ACID-GUANYLATE ESTER (CCD ID:

GNP) (formula: C₁₀H₁₇N₆O₁₃P₃).

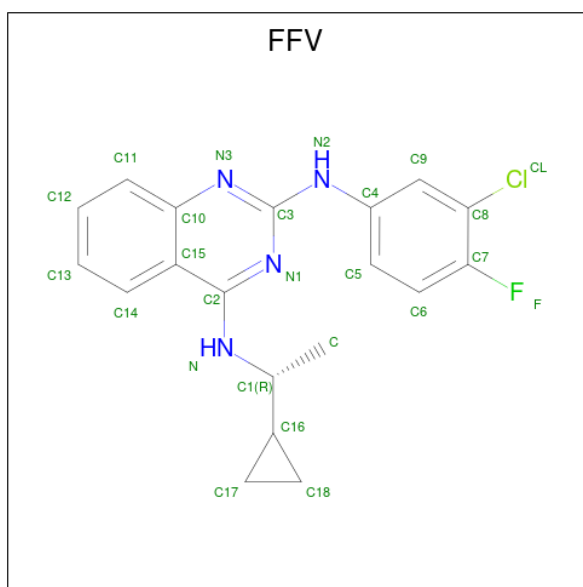


Mol	Chain	Residues	Atoms				ZeroOcc	AltConf	
			Total	C	N	O			P
4	A	1	32	10	6	13	3	0	0

- Molecule 5 is MAGNESIUM ION (CCD ID: MG) (formula: Mg).

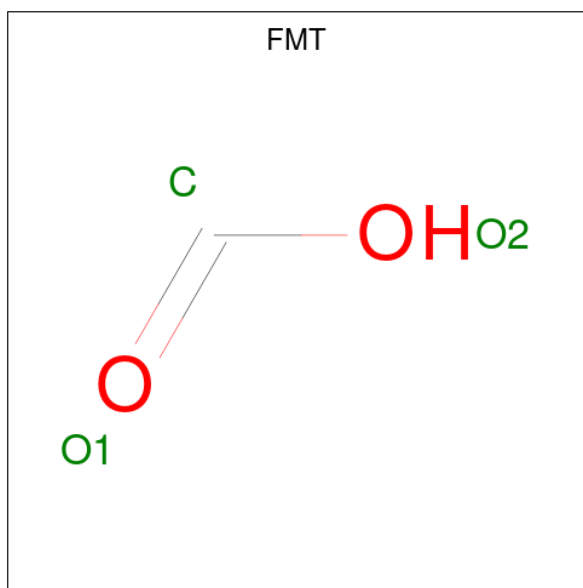
Mol	Chain	Residues	Atoms		ZeroOcc	AltConf
			Total	Mg		
5	A	1	1	1	0	0

- Molecule 6 is N 2 -(3-chloro-4-fluorophenyl)-N 4 -[(1R)-1-cyclopropylethyl]quinazoline-2,4-diamine (CCD ID: FFV) (formula: C₁₉H₁₈ClFN₄).



Mol	Chain	Residues	Atoms					ZeroOcc	AltConf
			Total	C	Cl	F	N		
6	B	1	25	19	1	1	4	0	1

- Molecule 7 is FORMIC ACID (CCD ID: FMT) (formula: CH₂O₂).



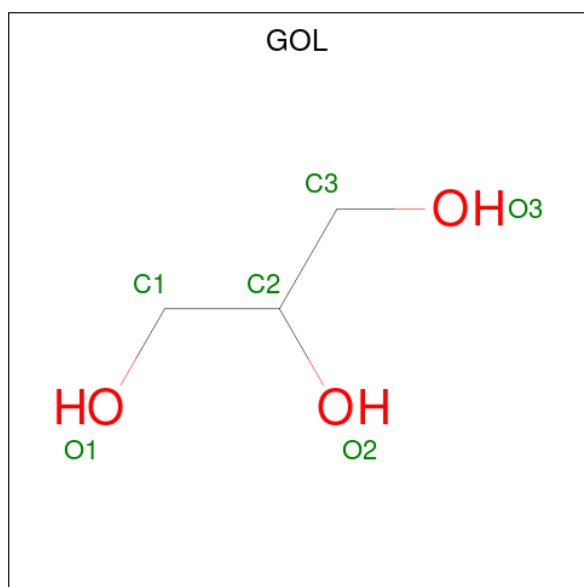
Mol	Chain	Residues	Atoms			ZeroOcc	AltConf
			Total	C	O		
7	B	1	3	1	2	0	0
7	B	1	3	1	2	0	0
7	B	1	3	1	2	0	0

Continued on next page...

Continued from previous page...

Mol	Chain	Residues	Atoms			ZeroOcc	AltConf
7	B	1	Total	C	O	0	0
			3	1	2		
7	B	1	Total	C	O	0	0
			3	1	2		
7	C	1	Total	C	O	0	0
			3	1	2		

- Molecule 8 is GLYCEROL (CCD ID: GOL) (formula: C₃H₈O₃).



Mol	Chain	Residues	Atoms			ZeroOcc	AltConf
8	B	1	Total	C	O	0	0
			6	3	3		
8	B	1	Total	C	O	0	0
			6	3	3		

- Molecule 9 is SODIUM ION (CCD ID: NA) (formula: Na).

Mol	Chain	Residues	Atoms		ZeroOcc	AltConf
9	C	1	Total	Na	0	0
			1	1		

- Molecule 10 is water.

Mol	Chain	Residues	Atoms		ZeroOcc	AltConf
10	A	147	Total	O	0	0
			147	147		

Continued on next page...

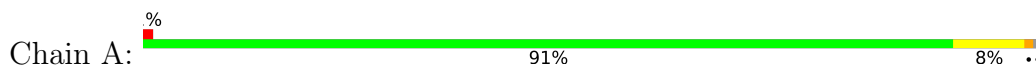
Continued from previous page...

Mol	Chain	Residues	Atoms		ZeroOcc	AltConf
10	B	640	Total 640	O 640	0	0
10	C	185	Total 185	O 185	0	0

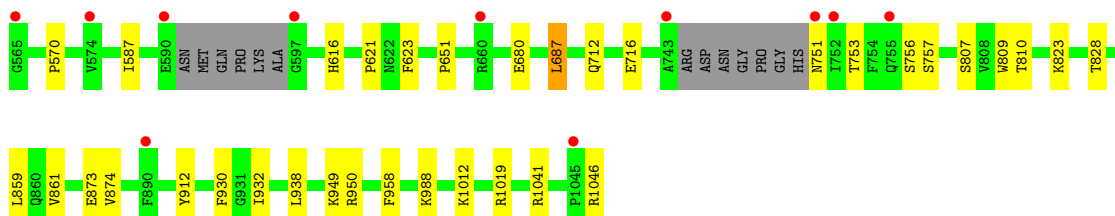
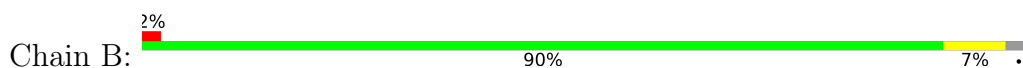
3 Residue-property plots [i](#)

These plots are drawn for all protein, RNA, DNA and oligosaccharide chains in the entry. The first graphic for a chain summarises the proportions of the various outlier classes displayed in the second graphic. The second graphic shows the sequence view annotated by issues in geometry and electron density. Residues are color-coded according to the number of geometric quality criteria for which they contain at least one outlier: green = 0, yellow = 1, orange = 2 and red = 3 or more. A red dot above a residue indicates a poor fit to the electron density ($RSRZ > 2$). Stretches of 2 or more consecutive residues without any outlier are shown as a green connector. Residues present in the sample, but not in the model, are shown in grey.

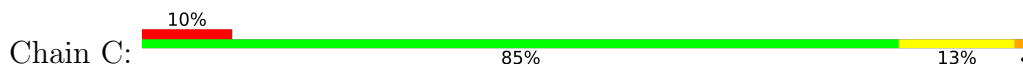
- Molecule 1: GTPase HRas



- Molecule 2: Son of sevenless homolog 1



- Molecule 3: GTPase HRas



4 Data and refinement statistics i

Property	Value	Source
Space group	I 4 2 2	Depositor
Cell constants a, b, c, α , β , γ	184.65Å 184.65Å 179.35Å 90.00° 90.00° 90.00°	Depositor
Resolution (Å)	37.51 – 1.83 37.51 – 1.83	Depositor EDS
% Data completeness (in resolution range)	99.9 (37.51-1.83) 99.9 (37.51-1.83)	Depositor EDS
R_{merge}	(Not available)	Depositor
R_{sym}	(Not available)	Depositor
$\langle I/\sigma(I) \rangle$ ¹	1.96 (at 1.83Å)	Xtriage
Refinement program	PHENIX (1.13rc1_2961: ???)	Depositor
R, R_{free}	0.161 , 0.174 0.161 , 0.177	Depositor DCC
R_{free} test set	1998 reflections (1.49%)	wwPDB-VP
Wilson B-factor (Å ²)	31.4	Xtriage
Anisotropy	0.064	Xtriage
Bulk solvent k_{sol} (e/Å ³), B_{sol} (Å ²)	0.35 , 51.0	EDS
L-test for twinning ²	$\langle L \rangle = 0.50$, $\langle L^2 \rangle = 0.33$	Xtriage
Estimated twinning fraction	0.007 for l,-k,h 0.009 for -h,-l,-k	Xtriage
F_o, F_c correlation	0.97	EDS
Total number of atoms	7864	wwPDB-VP
Average B, all atoms (Å ²)	36.0	wwPDB-VP

Xtriage's analysis on translational NCS is as follows: *The largest off-origin peak in the Patterson function is 2.85% of the height of the origin peak. No significant pseudotranslation is detected.*

¹Intensities estimated from amplitudes.

²Theoretical values of $\langle |L| \rangle$, $\langle L^2 \rangle$ for acentric reflections are 0.5, 0.333 respectively for untwinned datasets, and 0.375, 0.2 for perfectly twinned datasets.

5 Model quality [i](#)

5.1 Standard geometry [i](#)

Bond lengths and bond angles in the following residue types are not validated in this section: CSO, NA, MG, GOL, GNP, FMT, FFV

The Z score for a bond length (or angle) is the number of standard deviations the observed value is removed from the expected value. A bond length (or angle) with $|Z| > 5$ is considered an outlier worth inspection. RMSZ is the root-mean-square of all Z scores of the bond lengths (or angles).

Mol	Chain	Bond lengths		Bond angles	
		RMSZ	# Z >5	RMSZ	# Z >5
1	A	0.31	0/1405	0.47	0/1892
2	B	0.32	0/4139	0.46	0/5591
3	C	0.39	1/1385 (0.1%)	0.52	0/1867
All	All	0.33	1/6929 (0.0%)	0.47	0/9350

Chiral center outliers are detected by calculating the chiral volume of a chiral center and verifying if the center is modelled as a planar moiety or with the opposite hand. A planarity outlier is detected by checking planarity of atoms in a peptide group, atoms in a mainchain group or atoms of a sidechain that are expected to be planar.

Mol	Chain	#Chirality outliers	#Planarity outliers
3	C	0	1

All (1) bond length outliers are listed below:

Mol	Chain	Res	Type	Atoms	Z	Observed(Å)	Ideal(Å)
3	C	70	GLN	C-O	-5.22	1.18	1.24

There are no bond angle outliers.

There are no chirality outliers.

All (1) planarity outliers are listed below:

Mol	Chain	Res	Type	Group
3	C	25	GLN	Peptide

5.2 Too-close contacts [i](#)

In the following table, the Non-H and H(model) columns list the number of non-hydrogen atoms and hydrogen atoms in the chain respectively. The H(added) column lists the number of hydrogen

atoms added and optimized by MolProbity. The Clashes column lists the number of clashes within the asymmetric unit, whereas Symm-Clashes lists symmetry-related clashes.

Mol	Chain	Non-H	H(model)	H(added)	Clashes	Symm-Clashes
1	A	1395	0	1353	9	0
2	B	4042	0	4053	24	0
3	C	1366	0	1336	16	0
4	A	32	0	13	0	0
5	A	1	0	0	0	0
6	B	25	0	0	0	0
7	B	15	0	5	1	0
7	C	3	0	1	2	0
8	B	12	0	16	2	0
9	C	1	0	0	0	0
10	A	147	0	0	3	0
10	B	640	0	0	11	1
10	C	185	0	0	8	1
All	All	7864	0	6777	51	1

The all-atom clashscore is defined as the number of clashes found per 1000 atoms (including hydrogen atoms). The all-atom clashscore for this structure is 4.

All (51) close contacts within the same asymmetric unit are listed below, sorted by their clash magnitude.

Atom-1	Atom-2	Interatomic distance (Å)	Clash overlap (Å)
3:C:68:ARG:NH1	10:C:302:HOH:O	2.15	0.80
8:B:2008:GOL:O2	10:B:2101:HOH:O	2.01	0.77
1:A:102[B]:ARG:NH2	10:A:302:HOH:O	2.14	0.71
2:B:751:ASN:N	10:B:2106:HOH:O	2.23	0.71
1:A:129:GLN:OE1	10:A:301:HOH:O	2.08	0.70
7:C:201:FMT:O2	10:C:301:HOH:O	2.08	0.70
2:B:1046:ARG:OXT	10:B:2103:HOH:O	2.11	0.67
2:B:988[B]:LYS:NZ	10:B:2109:HOH:O	2.35	0.59
3:C:166:HIS:HD2	10:C:442:HOH:O	1.87	0.58
2:B:616:HIS:ND1	7:B:2005:FMT:O2	2.33	0.57
3:C:21:ILE:O	3:C:25:GLN:HB2	2.06	0.56
3:C:27:HIS:N	10:C:305:HOH:O	2.40	0.54
3:C:85:ASN:HD22	3:C:121:ALA:HB3	1.73	0.53
3:C:117[A]:LYS:NZ	10:C:307:HOH:O	2.41	0.52
7:C:201:FMT:H	10:C:406:HOH:O	2.09	0.52
2:B:1019[B]:ARG:NH1	10:B:2114:HOH:O	2.42	0.51
2:B:861:VAL:HG13	8:B:2008:GOL:H31	1.93	0.51
2:B:712:GLN:O	2:B:716[B]:GLU:HG2	2.14	0.48

Continued on next page...

Continued from previous page...

Atom-1	Atom-2	Interatomic distance (Å)	Clash overlap (Å)
3:C:38:ASP:N	3:C:38:ASP:OD1	2.45	0.48
3:C:24:ILE:HG21	3:C:39:SER:O	2.15	0.47
2:B:623:PHE:HE1	2:B:958:PHE:CE2	2.32	0.47
2:B:680:GLU:OE1	10:B:2104:HOH:O	2.20	0.47
2:B:949:LYS:NZ	10:B:2120:HOH:O	2.46	0.47
3:C:119:ASP:HA	3:C:147:LYS:NZ	2.30	0.46
2:B:621:PRO:O	10:B:2105:HOH:O	2.21	0.46
2:B:570:PRO:HB3	2:B:651:PRO:HG2	1.98	0.46
2:B:828:THR:HG23	2:B:873:GLU:HG2	1.98	0.46
1:A:36:ILE:HG23	2:B:687:LEU:HD13	1.98	0.45
2:B:623:PHE:HE1	2:B:958:PHE:CZ	2.34	0.45
3:C:24:ILE:HD13	3:C:42:LYS:HB2	1.99	0.45
1:A:79[B]:LEU:HG	1:A:114:VAL:HG21	1.99	0.45
1:A:1:MET:HG2	1:A:51:CSO:HA	1.98	0.44
1:A:61:GLN:HG2	10:A:348:HOH:O	2.17	0.44
1:A:158:THR:O	1:A:162[A]:GLU:HG3	2.17	0.44
1:A:97:ARG:HH11	1:A:111[B]:MET:HE2	1.83	0.44
2:B:912:TYR:CG	2:B:932:ILE:HD11	2.53	0.44
2:B:1012[B]:LYS:HA	2:B:1012[B]:LYS:HD3	1.85	0.44
2:B:807:SER:HA	2:B:809:TRP:CZ3	2.53	0.44
2:B:859[B]:LEU:HD23	2:B:874:VAL:HB	2.01	0.43
2:B:988[A]:LYS:NZ	10:B:2126:HOH:O	2.48	0.43
3:C:27:HIS:ND1	3:C:27:HIS:C	2.76	0.43
3:C:122:ALA:HA	10:C:384:HOH:O	2.18	0.43
1:A:148:THR:O	1:A:149:ARG:HB2	2.18	0.43
2:B:810:THR:HG21	2:B:938[B]:LEU:HD12	2.00	0.43
3:C:24:ILE:HD11	3:C:55:ILE:HD12	2.00	0.43
3:C:27:HIS:C	3:C:27:HIS:HD1	2.26	0.43
2:B:823[B]:LYS:HE2	10:B:2328:HOH:O	2.19	0.42
3:C:40:TYR:HB3	10:C:383:HOH:O	2.20	0.42
2:B:1041:ARG:NH2	10:B:2127:HOH:O	2.48	0.41
2:B:587:ILE:HD11	2:B:950:ARG:HG3	2.03	0.41
3:C:27:HIS:CE1	3:C:149:ARG:HD3	2.57	0.40

All (1) symmetry-related close contacts are listed below. The label for Atom-2 includes the symmetry operator and encoded unit-cell translations to be applied.

Atom-1	Atom-2	Interatomic distance (Å)	Clash overlap (Å)
10:B:2667:HOH:O	10:C:468:HOH:O[3_555]	1.74	0.46

5.3 Torsion angles [i](#)

5.3.1 Protein backbone [i](#)

In the following table, the Percentiles column shows the percent Ramachandran outliers of the chain as a percentile score with respect to all X-ray entries followed by that with respect to entries of similar resolution.

The Analysed column shows the number of residues for which the backbone conformation was analysed, and the total number of residues.

Mol	Chain	Analysed	Favoured	Allowed	Outliers	Percentiles	
1	A	172/167 (103%)	170 (99%)	2 (1%)	0	100	100
2	B	481/482 (100%)	476 (99%)	5 (1%)	0	100	100
3	C	170/167 (102%)	164 (96%)	4 (2%)	2 (1%)	10	3
All	All	823/816 (101%)	810 (98%)	11 (1%)	2 (0%)	36	34

All (2) Ramachandran outliers are listed below:

Mol	Chain	Res	Type
3	C	26	ASN
3	C	37	GLU

5.3.2 Protein sidechains [i](#)

In the following table, the Percentiles column shows the percent sidechain outliers of the chain as a percentile score with respect to all X-ray entries followed by that with respect to entries of similar resolution.

The Analysed column shows the number of residues for which the sidechain conformation was analysed, and the total number of residues.

Mol	Chain	Analysed	Rotameric	Outliers	Percentiles	
1	A	151/142 (106%)	150 (99%)	1 (1%)	76	68
2	B	455/447 (102%)	450 (99%)	5 (1%)	65	54
3	C	149/144 (104%)	141 (95%)	8 (5%)	20	4
All	All	755/733 (103%)	741 (98%)	14 (2%)	53	34

All (14) residues with a non-rotameric sidechain are listed below:

Mol	Chain	Res	Type
1	A	1	MET

Continued on next page...

Continued from previous page...

Mol	Chain	Res	Type
2	B	687	LEU
2	B	753	THR
2	B	756	SER
2	B	757	SER
2	B	930	PHE
3	C	19[A]	LEU
3	C	19[B]	LEU
3	C	27	HIS
3	C	31	GLU
3	C	36	ILE
3	C	38	ASP
3	C	127[A]	SER
3	C	127[B]	SER

Sometimes sidechains can be flipped to improve hydrogen bonding and reduce clashes. All (5) such sidechains are listed below:

Mol	Chain	Res	Type
2	B	866	ASN
3	C	61	GLN
3	C	85	ASN
3	C	94	HIS
3	C	95	GLN

5.3.3 RNA [i](#)

There are no RNA molecules in this entry.

5.4 Non-standard residues in protein, DNA, RNA chains [i](#)

1 non-standard protein/DNA/RNA residue is modelled in this entry.

In the following table, the Counts columns list the number of bonds (or angles) for which Mogul statistics could be retrieved, the number of bonds (or angles) that are observed in the model and the number of bonds (or angles) that are defined in the Chemical Component Dictionary. The Link column lists molecule types, if any, to which the group is linked. The Z score for a bond length (or angle) is the number of standard deviations the observed value is removed from the expected value. A bond length (or angle) with $|Z| > 2$ is considered an outlier worth inspection. RMSZ is the root-mean-square of all Z scores of the bond lengths (or angles).

Mol	Type	Chain	Res	Link	Bond lengths			Bond angles		
					Counts	RMSZ	$\# Z > 2$	Counts	RMSZ	$\# Z > 2$
1	CSO	A	51	1	3,6,7	0.97	0	1,6,8	1.18	0

In the following table, the Chirals column lists the number of chiral outliers, the number of chiral centers analysed, the number of these observed in the model and the number defined in the Chemical Component Dictionary. Similar counts are reported in the Torsion and Rings columns. '-' means no outliers of that kind were identified.

Mol	Type	Chain	Res	Link	Chirals	Torsions	Rings
1	CSO	A	51	1	-	0/1/5/7	-

There are no bond length outliers.

There are no bond angle outliers.

There are no chirality outliers.

There are no torsion outliers.

There are no ring outliers.

1 monomer is involved in 1 short contact:

Mol	Chain	Res	Type	Clashes	Symm-Clashes
1	A	51	CSO	1	0

5.5 Carbohydrates [i](#)

There are no oligosaccharides in this entry.

5.6 Ligand geometry [i](#)

Of 12 ligands modelled in this entry, 2 are monoatomic - leaving 10 for Mogul analysis.

In the following table, the Counts columns list the number of bonds (or angles) for which Mogul statistics could be retrieved, the number of bonds (or angles) that are observed in the model and the number of bonds (or angles) that are defined in the Chemical Component Dictionary. The Link column lists molecule types, if any, to which the group is linked. The Z score for a bond length (or angle) is the number of standard deviations the observed value is removed from the expected value. A bond length (or angle) with $|Z| > 2$ is considered an outlier worth inspection. RMSZ is the root-mean-square of all Z scores of the bond lengths (or angles).

Mol	Type	Chain	Res	Link	Bond lengths			Bond angles		
					Counts	RMSZ	# $ Z > 2$	Counts	RMSZ	# $ Z > 2$
7	FMT	C	201	-	2,2,2	0.71	0	1,1,1	0.01	0
6	FFV	B	2001[B]	-	27,28,28	1.06	2 (7%)	39,40,40	0.98	2 (5%)
8	GOL	B	2007	-	5,5,5	0.89	0	5,5,5	0.91	0
4	GNP	A	201	5	34,34,34	1.28	5 (14%)	47,54,54	0.64	0
8	GOL	B	2008	-	5,5,5	0.95	0	5,5,5	1.15	1 (20%)

Mol	Type	Chain	Res	Link	Bond lengths			Bond angles		
					Counts	RMSZ	# Z > 2	Counts	RMSZ	# Z > 2
7	FMT	B	2002	-	2,2,2	0.70	0	1,1,1	0.23	0
7	FMT	B	2004	-	2,2,2	0.72	0	1,1,1	0.25	0
7	FMT	B	2006	-	2,2,2	0.71	0	1,1,1	0.22	0
7	FMT	B	2005	-	2,2,2	0.70	0	1,1,1	0.27	0
7	FMT	B	2003	-	2,2,2	0.72	0	1,1,1	0.22	0

In the following table, the Chirals column lists the number of chiral outliers, the number of chiral centers analysed, the number of these observed in the model and the number defined in the Chemical Component Dictionary. Similar counts are reported in the Torsion and Rings columns. '-' means no outliers of that kind were identified.

Mol	Type	Chain	Res	Link	Chirals	Torsions	Rings
8	GOL	B	2007	-	-	0/4/4/4	-
4	GNP	A	201	5	-	3/18/38/38	0/3/3/3
8	GOL	B	2008	-	-	2/4/4/4	-
6	FFV	B	2001[B]	-	-	3/12/14/14	0/4/4/4

All (7) bond length outliers are listed below:

Mol	Chain	Res	Type	Atoms	Z	Observed(Å)	Ideal(Å)
4	A	201	GNP	PG-O1G	4.05	1.52	1.46
4	A	201	GNP	PB-O3A	3.30	1.63	1.59
4	A	201	GNP	PG-N3B	3.21	1.71	1.63
6	B	2001[B]	FFV	C2-N1	2.67	1.36	1.33
4	A	201	GNP	PB-O1B	2.33	1.49	1.46
4	A	201	GNP	PB-O2B	-2.22	1.50	1.56
6	B	2001[B]	FFV	C3-N1	2.03	1.40	1.34

All (3) bond angle outliers are listed below:

Mol	Chain	Res	Type	Atoms	Z	Observed(°)	Ideal(°)
6	B	2001[B]	FFV	C-C1-C16	-3.06	107.53	114.11
8	B	2008	GOL	C3-C2-C1	-2.37	103.11	111.80
6	B	2001[B]	FFV	N2-C3-N3	-2.10	109.69	116.91

There are no chirality outliers.

All (8) torsion outliers are listed below:

Mol	Chain	Res	Type	Atoms
4	A	201	GNP	PB-N3B-PG-O1G

Continued on next page...

Continued from previous page...

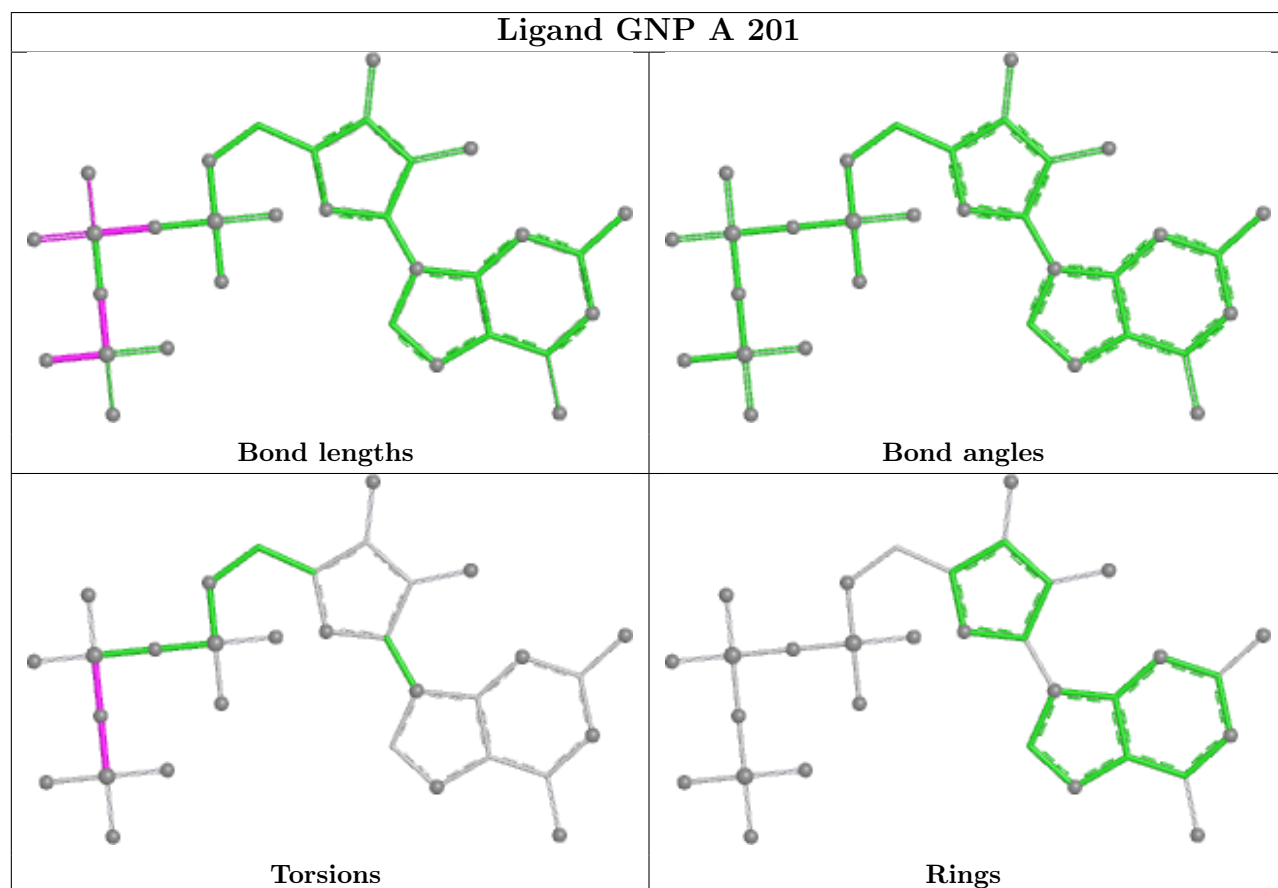
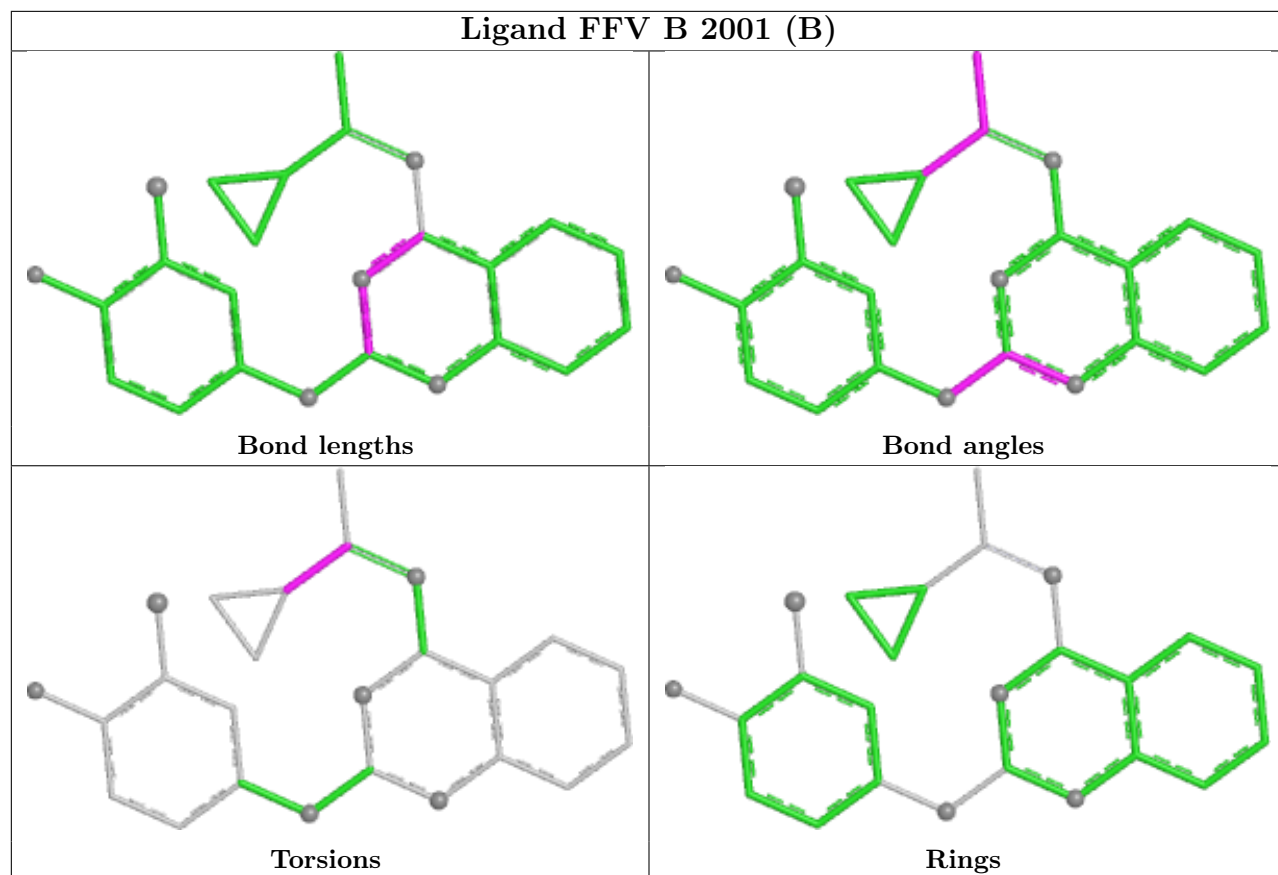
Mol	Chain	Res	Type	Atoms
4	A	201	GNP	PG-N3B-PB-O1B
6	B	2001[B]	FFV	N-C1-C16-C17
6	B	2001[B]	FFV	N-C1-C16-C18
6	B	2001[B]	FFV	C-C1-C16-C18
8	B	2008	GOL	C1-C2-C3-O3
8	B	2008	GOL	O2-C2-C3-O3
4	A	201	GNP	PG-N3B-PB-O3A

There are no ring outliers.

3 monomers are involved in 5 short contacts:

Mol	Chain	Res	Type	Clashes	Symm-Clashes
7	C	201	FMT	2	0
8	B	2008	GOL	2	0
7	B	2005	FMT	1	0

The following is a two-dimensional graphical depiction of Mogul quality analysis of bond lengths, bond angles, torsion angles, and ring geometry for all instances of the Ligand of Interest. In addition, ligands with molecular weight > 250 and outliers as shown on the validation Tables will also be included. For torsion angles, if less than 5% of the Mogul distribution of torsion angles is within 10 degrees of the torsion angle in question, then that torsion angle is considered an outlier. Any bond that is central to one or more torsion angles identified as an outlier by Mogul will be highlighted in the graph. For rings, the root-mean-square deviation (RMSD) between the ring in question and similar rings identified by Mogul is calculated over all ring torsion angles. If the average RMSD is greater than 60 degrees and the minimal RMSD between the ring in question and any Mogul-identified rings is also greater than 60 degrees, then that ring is considered an outlier. The outliers are highlighted in purple. The color gray indicates Mogul did not find sufficient equivalents in the CSD to analyse the geometry.



5.7 Other polymers [i](#)

There are no such residues in this entry.

5.8 Polymer linkage issues [i](#)

There are no chain breaks in this entry.

6 Fit of model and data

6.1 Protein, DNA and RNA chains

In the following table, the column labelled ‘#RSRZ > 2’ contains the number (and percentage) of RSRZ outliers, followed by percent RSRZ outliers for the chain as percentile scores relative to all X-ray entries and entries of similar resolution. The OWAB column contains the minimum, median, 95th percentile and maximum values of the occupancy-weighted average B-factor per residue. The column labelled ‘Q < 0.9’ lists the number of (and percentage) of residues with an average occupancy less than 0.9.

Mol	Chain	Analysed	<RSRZ>	#RSRZ>2	OWAB(Å ²)	Q<0.9
1	A	165/167 (98%)	-0.19	2 (1%) 76 82	13, 31, 54, 71	9 (5%)
2	B	469/482 (97%)	-0.25	11 (2%) 61 67	12, 30, 52, 80	18 (3%)
3	C	167/167 (100%)	0.09	16 (9%) 13 14	13, 32, 66, 102	5 (2%)
All	All	801/816 (98%)	-0.17	29 (3%) 46 49	12, 30, 56, 102	32 (3%)

All (29) RSRZ outliers are listed below:

Mol	Chain	Res	Type	RSRZ
3	C	27	HIS	9.2
3	C	29	VAL	6.7
3	C	26	ASN	5.5
2	B	743	ALA	5.1
3	C	30	ASP	4.6
3	C	31	GLU	4.2
3	C	120	LEU	4.2
2	B	565	GLY	3.4
2	B	751	ASN	3.3
3	C	25	GLN	3.3
2	B	755	GLN	3.2
1	A	95[A]	GLN	3.2
3	C	24	ILE	3.1
2	B	1045	PRO	3.1
2	B	890[A]	PHE	3.0
2	B	660[A]	ARG	2.9
3	C	39	SER	2.9
3	C	38	ASP	2.9
3	C	28	PHE	2.8
2	B	597	GLY	2.8
3	C	121	ALA	2.7
1	A	165	GLN	2.6
3	C	37	GLU	2.5

Continued on next page...

Continued from previous page...

Mol	Chain	Res	Type	RSRZ
2	B	590	GLU	2.3
2	B	752	ILE	2.2
2	B	574	VAL	2.2
3	C	36	ILE	2.2
3	C	0	GLY	2.2
3	C	122	ALA	2.1

6.2 Non-standard residues in protein, DNA, RNA chains [i](#)

In the following table, the Atoms column lists the number of modelled atoms in the group and the number defined in the chemical component dictionary. The B-factors column lists the minimum, median, 95th percentile and maximum values of B factors of atoms in the group. The column labelled 'Q< 0.9' lists the number of atoms with occupancy less than 0.9.

Mol	Type	Chain	Res	Atoms	RSCC	RSR	B-factors(Å ²)	Q<0.9
1	CSO	A	51	7/8	0.95	0.10	27,28,45,47	0

6.3 Carbohydrates [i](#)

There are no oligosaccharides in this entry.

6.4 Ligands [i](#)

In the following table, the Atoms column lists the number of modelled atoms in the group and the number defined in the chemical component dictionary. The B-factors column lists the minimum, median, 95th percentile and maximum values of B factors of atoms in the group. The column labelled 'Q< 0.9' lists the number of atoms with occupancy less than 0.9.

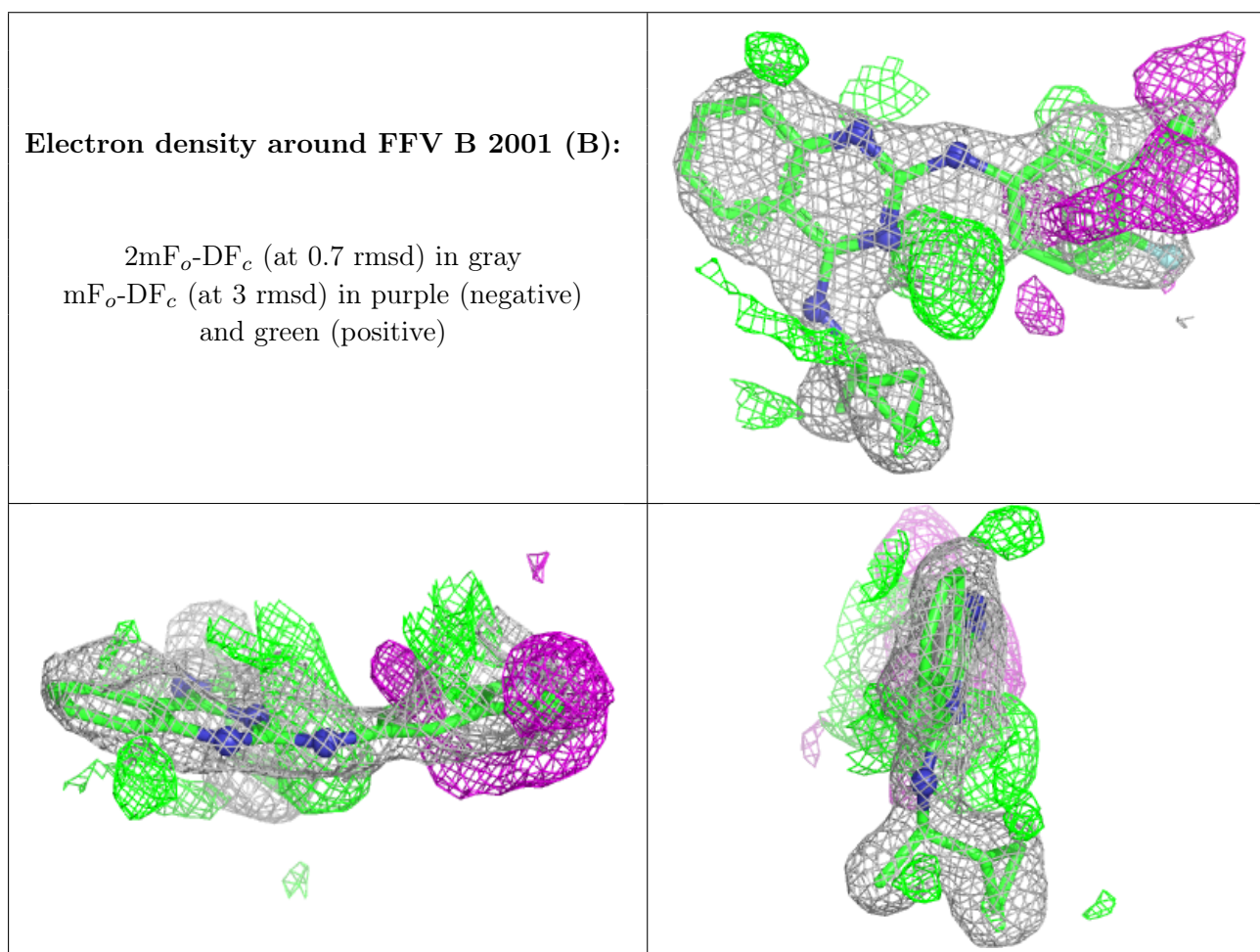
Mol	Type	Chain	Res	Atoms	RSCC	RSR	B-factors(Å ²)	Q<0.9
6	FFV	B	2001[B]	25/25	0.77	0.27	31,50,59,61	25
8	GOL	B	2007	6/6	0.85	0.17	40,56,64,68	0
7	FMT	B	2006	3/3	0.90	0.13	75,75,76,76	0
7	FMT	C	201	3/3	0.91	0.16	37,37,41,51	0
7	FMT	B	2003	3/3	0.91	0.13	57,57,65,66	0
8	GOL	B	2008	6/6	0.91	0.14	35,53,62,66	0
7	FMT	B	2002	3/3	0.93	0.13	63,63,64,69	0
7	FMT	B	2004	3/3	0.95	0.16	45,45,49,52	0
7	FMT	B	2005	3/3	0.96	0.16	34,34,42,44	0
9	NA	C	202	1/1	0.97	0.07	45,45,45,45	0
4	GNP	A	201	32/32	0.99	0.04	24,27,31,35	0

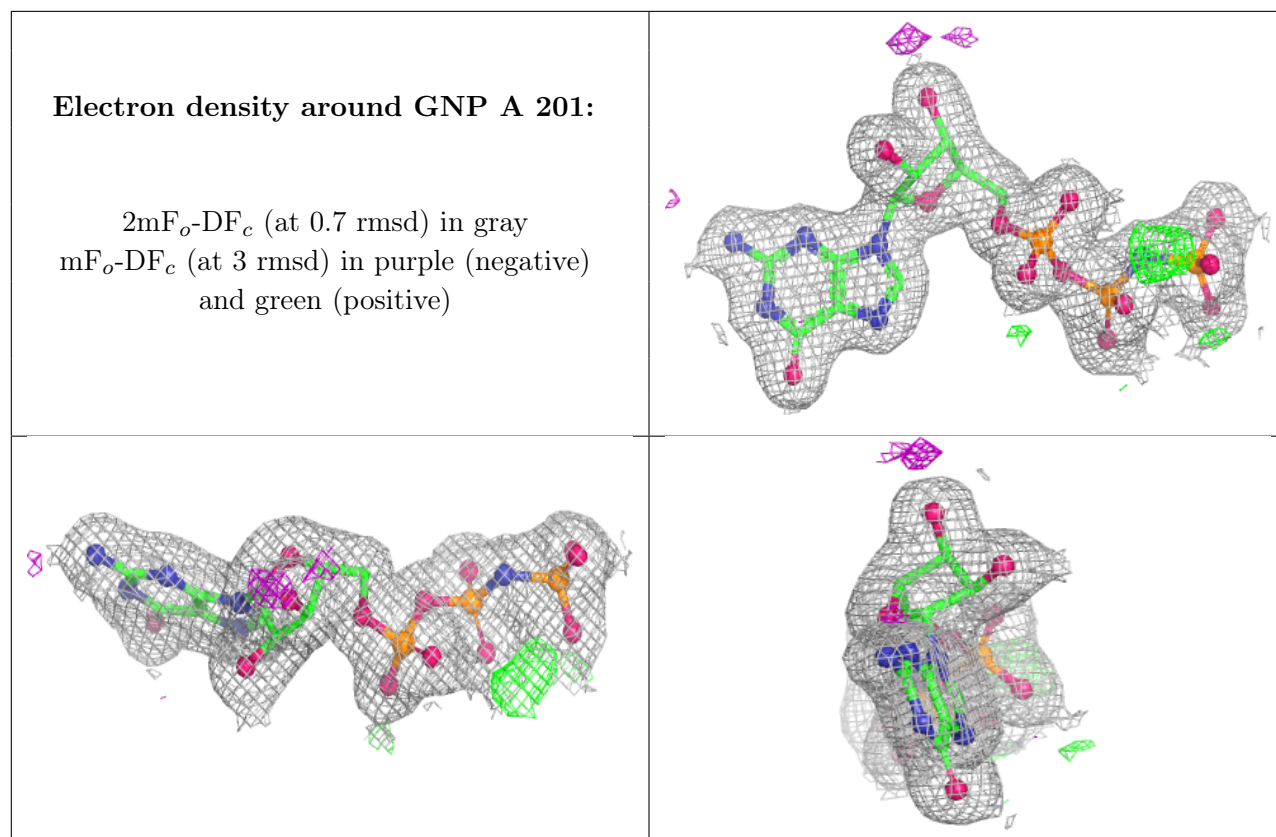
Continued on next page...

Continued from previous page...

Mol	Type	Chain	Res	Atoms	RSCC	RSR	B-factors(\AA^2)	Q<0.9
5	MG	A	202	1/1	0.99	0.05	20,20,20,20	0

The following is a graphical depiction of the model fit to experimental electron density of all instances of the Ligand of Interest. In addition, ligands with molecular weight > 250 and outliers as shown on the geometry validation Tables will also be included. Each fit is shown from different orientation to approximate a three-dimensional view.





6.5 Other polymers [i](#)

There are no such residues in this entry.