



## wwPDB EM Validation Summary Report ⓘ

Mar 8, 2026 – 03:41 AM UTC

PDB ID : 7CUW / pdb\_00007cuw  
EMDB ID : EMD-30475  
Title : Ubiquinol Binding Site of Cytochrome bo3 from Escherichia coli  
Authors : Li, J.; Han, L.; Gennis, R.B.; Zhu, J.P.; Zhang, K.  
Deposited on : 2020-08-25  
Resolution : 2.63 Å (reported)

This is a wwPDB EM Validation Summary Report for a publicly released PDB entry.

We welcome your comments at [validation@mail.wwpdb.org](mailto:validation@mail.wwpdb.org)

A user guide is available at

<https://www.wwpdb.org/validation/2017/EMValidationReportHelp>

with specific help available everywhere you see the ⓘ symbol.

The types of validation reports are described at

<http://www.wwpdb.org/validation/2017/FAQs#types>.

---

The following versions of software and data (see [references ⓘ](#)) were used in the production of this report:

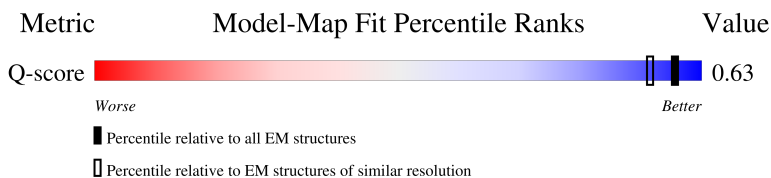
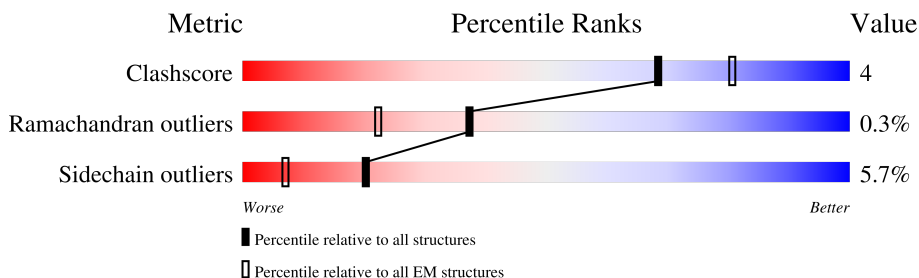
EMDB validation analysis : 0.0.1.dev132  
Mogul : 2022.3.0, CSD as543be (2022)  
MolProbity : 4-5-2 with Phenix2.0  
Buster-report : wwPDB partial adaption of 1.1.7 (2018)  
Percentile statistics : 20250101.v01 (using entries in the PDB archive January 1st 2025)  
EM percentile statistics : 202505.v01 (Using data in the EMDB archive up until May 2025)  
MapQ : 1.9.13  
Ideal geometry (proteins) : Engh & Huber (2001)  
Ideal geometry (DNA, RNA) : Parkinson et al. (1996)  
Validation Pipeline (wwPDB-VP) : 2.49

# 1 Overall quality at a glance i

The following experimental techniques were used to determine the structure:  
*ELECTRON MICROSCOPY*

The reported resolution of this entry is 2.63 Å.

Percentile scores (ranging between 0-100) for global validation metrics of the entry are shown in the following graphic. The table shows the number of entries on which the scores are based.



Metric	Whole archive (#Entries)	EM structures (#Entries)	Similar EM resolution (#Entries, resolution range(Å))
Clashscore	229148	23984	-
Ramachandran outliers	224038	23583	-
Sidechain outliers	223484	23102	-
Q-score	-	25397	8888 ( 2.13 - 3.13 )

The table below summarises the geometric issues observed across the polymeric chains and their fit to the map. The red, orange, yellow and green segments of the bar indicate the fraction of residues that contain outliers for  $\geq 3$ , 2, 1 and 0 types of geometric quality criteria respectively. A grey segment represents the fraction of residues that are not modelled. The numeric value for each fraction is indicated below the corresponding segment, with a dot representing fractions  $\leq 5\%$ . The upper red bar (where present) indicates the fraction of residues that have poor fit to the EM map (all-atom inclusion  $< 40\%$ ). The numeric value is given above the bar.

Mol	Chain	Length	Quality of chain
1	A	663	 84% 13% ..
2	B	291	 79% 9% 11%
3	C	204	 81% 9% 10%
4	D	109	 82% 6% • 11%

## 2 Entry composition [i](#)

There are 9 unique types of molecules in this entry. The entry contains 9839 atoms, of which 0 are hydrogens and 0 are deuteriums.

In the tables below, the AltConf column contains the number of residues with at least one atom in alternate conformation and the Trace column contains the number of residues modelled with at most 2 atoms.

- Molecule 1 is a protein called Cytochrome bo(3) ubiquinol oxidase subunit 1.

Mol	Chain	Residues	Atoms					AltConf	Trace
			Total	C	N	O	S		
1	A	659	5240	3514	830	859	37	1	0

- Molecule 2 is a protein called Cytochrome bo(3) ubiquinol oxidase subunit 2.

Mol	Chain	Residues	Atoms					AltConf	Trace
			Total	C	N	O	S		
2	B	259	2027	1325	327	364	11	0	0

- Molecule 3 is a protein called Cytochrome bo(3) ubiquinol oxidase subunit 3.

Mol	Chain	Residues	Atoms					AltConf	Trace
			Total	C	N	O	S		
3	C	184	1440	965	226	236	13	0	0

- Molecule 4 is a protein called Cytochrome bo(3) ubiquinol oxidase subunit 4.

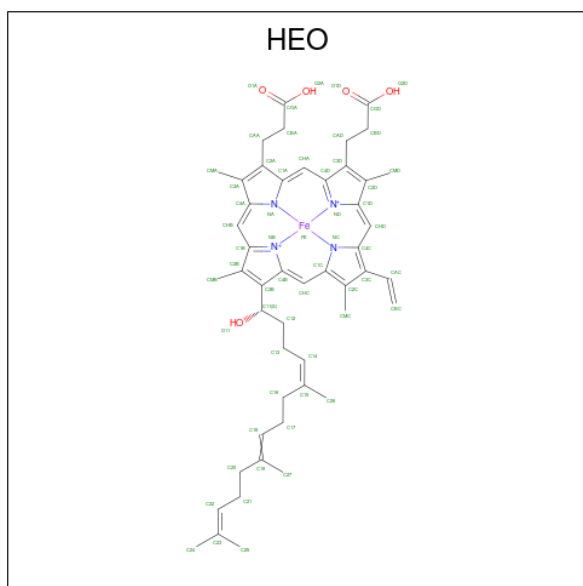
Mol	Chain	Residues	Atoms					AltConf	Trace
			Total	C	N	O	S		
4	D	97	753	505	115	122	11	0	0

- Molecule 5 is PROTOPORPHYRIN IX CONTAINING FE (CCD ID: HEM) (formula:  $C_{34}H_{32}FeN_4O_4$ ).



Mol	Chain	Residues	Atoms				AltConf	
			Total	C	Fe	N		O
5	A	1	43	34	1	4	4	0

- Molecule 6 is HEME O (CCD ID: HEO) (formula:  $C_{49}H_{58}FeN_4O_5$ ).

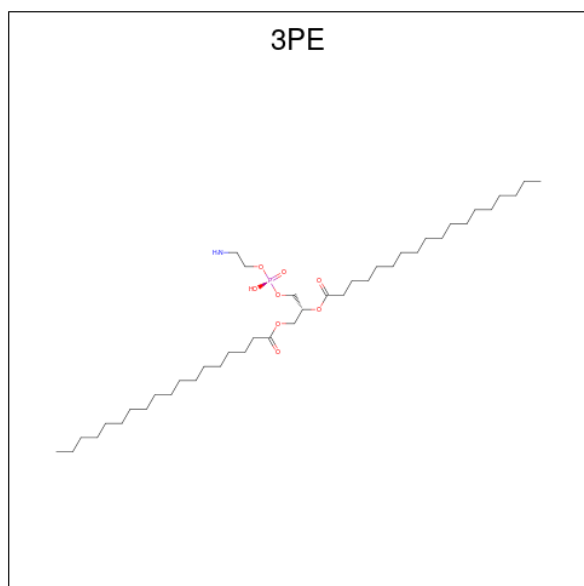


Mol	Chain	Residues	Atoms				AltConf	
			Total	C	Fe	N		O
6	A	1	59	49	1	4	5	0

- Molecule 7 is COPPER (II) ION (CCD ID: CU) (formula:  $Cu$ ).

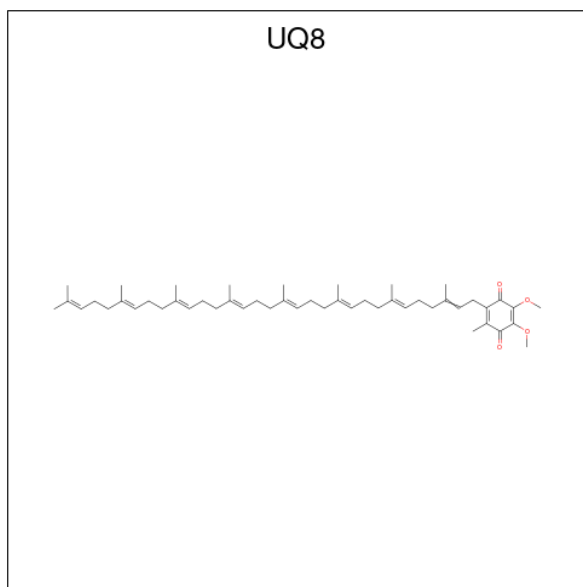
Mol	Chain	Residues	Atoms		AltConf
7	A	1	Total	Cu	0
			1	1	

- Molecule 8 is 1,2-Distearoyl-sn-glycerophosphoethanolamine (CCD ID: 3PE) (formula:  $C_{41}H_{82}NO_8P$ ).



Mol	Chain	Residues	Atoms					AltConf
			Total	C	N	O	P	
8	A	1	Total	C	N	O	P	0
			51	41	1	8	1	
8	A	1	Total	C	N	O	P	0
			39	29	1	8	1	
8	A	1	Total	C	N	O	P	0
			51	41	1	8	1	
8	A	1	Total	C	N	O	P	0
			51	41	1	8	1	
8	C	1	Total	C	N	O	P	0
			51	41	1	8	1	


- Molecule 9 is Ubiquinone-8 (CCD ID: UQ8) (formula:  $C_{49}H_{74}O_4$ ) (labeled as "Ligand of Interest" by depositor).

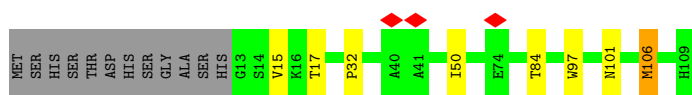


Mol	Chain	Residues	Atoms			AltConf
			Total	C	O	
9	A	1	33	29	4	0



- Molecule 4: Cytochrome bo(3) ubiquinol oxidase subunit 4

Chain D:  82% 6% • 11%



## 4 Experimental information

Property	Value	Source
EM reconstruction method	SINGLE PARTICLE	Depositor
Imposed symmetry	POINT, Not provided	
Number of particles used	322384	Depositor
Resolution determination method	FSC 0.143 CUT-OFF	Depositor
CTF correction method	PHASE FLIPPING AND AMPLITUDE CORRECTION	Depositor
Microscope	FEI TITAN KRIOS	Depositor
Voltage (kV)	300	Depositor
Electron dose ( $e^-/\text{\AA}^2$ )	1.3	Depositor
Minimum defocus (nm)	Not provided	
Maximum defocus (nm)	Not provided	
Magnification	Not provided	
Image detector	GATAN K3 (6k x 4k)	Depositor
Maximum map value	3.360	Depositor
Minimum map value	-1.717	Depositor
Average map value	0.002	Depositor
Map value standard deviation	0.070	Depositor
Recommended contour level	0.56	Depositor
Map size (Å)	299.52002, 299.52002, 299.52002	wwPDB
Map dimensions	360, 360, 360	wwPDB
Map angles (°)	90.0, 90.0, 90.0	wwPDB
Pixel spacing (Å)	0.8320001, 0.8320001, 0.8320001	Depositor

## 5 Model quality [i](#)

### 5.1 Standard geometry [i](#)

Bond lengths and bond angles in the following residue types are not validated in this section: UQ8, HEO, 3PE, CU, HEM

The Z score for a bond length (or angle) is the number of standard deviations the observed value is removed from the expected value. A bond length (or angle) with  $|Z| > 5$  is considered an outlier worth inspection. RMSZ is the root-mean-square of all Z scores of the bond lengths (or angles).

Mol	Chain	Bond lengths		Bond angles	
		RMSZ	# Z  >5	RMSZ	# Z  >5
1	A	0.30	0/5418	0.52	6/7387 (0.1%)
2	B	0.29	0/2086	0.45	0/2841
3	C	0.28	0/1482	0.43	0/2012
4	D	0.27	0/772	0.50	0/1054
All	All	0.29	0/9758	0.49	6/13294 (0.0%)

Chiral center outliers are detected by calculating the chiral volume of a chiral center and verifying if the center is modelled as a planar moiety or with the opposite hand. A planarity outlier is detected by checking planarity of atoms in a peptide group, atoms in a mainchain group or atoms of a sidechain that are expected to be planar.

Mol	Chain	#Chirality outliers	#Planarity outliers
1	A	0	2

There are no bond length outliers.

The worst 5 of 6 bond angle outliers are listed below:

Mol	Chain	Res	Type	Atoms	Z	Observed( $^{\circ}$ )	Ideal( $^{\circ}$ )
1	A	462	ILE	N-CA-C	5.67	121.14	109.34
1	A	550	TYR	CA-C-N	5.49	132.03	121.54
1	A	550	TYR	C-N-CA	5.49	132.03	121.54
1	A	332	LEU	CA-CB-CG	5.17	134.40	116.30
1	A	492	HIS	CA-C-N	5.12	131.32	121.54

There are no chirality outliers.

All (2) planarity outliers are listed below:

Mol	Chain	Res	Type	Group
1	A	174	PRO	Peptide

*Continued on next page...*

Continued from previous page...

Mol	Chain	Res	Type	Group
1	A	461	ILE	Peptide

## 5.2 Too-close contacts [i](#)

In the following table, the Non-H and H(model) columns list the number of non-hydrogen atoms and hydrogen atoms in the chain respectively. The H(added) column lists the number of hydrogen atoms added and optimized by MolProbity. The Clashes column lists the number of clashes within the asymmetric unit, whereas Symm-Clashes lists symmetry-related clashes.

Mol	Chain	Non-H	H(model)	H(added)	Clashes	Symm-Clashes
1	A	5240	0	5235	52	0
2	B	2027	0	2023	12	0
3	C	1440	0	1454	8	0
4	D	753	0	788	5	0
5	A	43	0	30	2	0
6	A	59	0	56	2	0
7	A	1	0	0	0	0
8	A	192	0	298	4	0
8	C	51	0	82	2	0
9	A	33	0	39	0	0
All	All	9839	0	10005	73	0

The all-atom clashscore is defined as the number of clashes found per 1000 atoms (including hydrogen atoms). The all-atom clashscore for this structure is 4.

The worst 5 of 73 close contacts within the same asymmetric unit are listed below, sorted by their clash magnitude.

Atom-1	Atom-2	Interatomic distance (Å)	Clash overlap (Å)
2:B:123:ILE:HD11	2:B:215:LYS:HB3	1.78	0.65
3:C:34:MET:HB3	4:D:84:THR:HG21	1.77	0.65
3:C:176:ARG:HG2	8:C:301:3PE:H32	1.80	0.63
1:A:82:GLN:NE2	1:A:93:PHE:O	2.31	0.63
1:A:294:VAL:HG21	1:A:428:VAL:HA	1.84	0.60

There are no symmetry-related clashes.

## 5.3 Torsion angles [i](#)

### 5.3.1 Protein backbone [i](#)

In the following table, the Percentiles column shows the percent Ramachandran outliers of the chain as a percentile score with respect to all PDB entries followed by that with respect to all EM entries.

The Analysed column shows the number of residues for which the backbone conformation was analysed, and the total number of residues.

Mol	Chain	Analysed	Favoured	Allowed	Outliers	Percentiles	
1	A	658/663 (99%)	628 (95%)	28 (4%)	2 (0%)	36	50
2	B	257/291 (88%)	250 (97%)	7 (3%)	0	100	100
3	C	182/204 (89%)	176 (97%)	5 (3%)	1 (0%)	24	36
4	D	95/109 (87%)	90 (95%)	5 (5%)	0	100	100
All	All	1192/1267 (94%)	1144 (96%)	45 (4%)	3 (0%)	37	50

All (3) Ramachandran outliers are listed below:

Mol	Chain	Res	Type
1	A	175	PRO
1	A	462	ILE
3	C	134	GLY

### 5.3.2 Protein sidechains [i](#)

In the following table, the Percentiles column shows the percent sidechain outliers of the chain as a percentile score with respect to all PDB entries followed by that with respect to all EM entries.

The Analysed column shows the number of residues for which the sidechain conformation was analysed, and the total number of residues.

Mol	Chain	Analysed	Rotameric	Outliers	Percentiles	
1	A	544/547 (100%)	512 (94%)	32 (6%)	18	29
2	B	216/242 (89%)	203 (94%)	13 (6%)	17	29
3	C	150/166 (90%)	140 (93%)	10 (7%)	15	24
4	D	84/94 (89%)	82 (98%)	2 (2%)	43	64
All	All	994/1049 (95%)	937 (94%)	57 (6%)	20	31

5 of 57 residues with a non-rotameric sidechain are listed below:

Mol	Chain	Res	Type
1	A	613	LEU
4	D	17	THR
2	B	30	VAL
3	C	172	THR
3	C	95	LYS

Sometimes sidechains can be flipped to improve hydrogen bonding and reduce clashes. 5 of 7 such sidechains are listed below:

Mol	Chain	Res	Type
2	B	16	GLN
2	B	148	ASN
4	D	77	ASN
3	C	121	HIS
1	A	557	HIS

### 5.3.3 RNA [i](#)

There are no RNA molecules in this entry.

### 5.4 Non-standard residues in protein, DNA, RNA chains [i](#)

There are no non-standard protein/DNA/RNA residues in this entry.

### 5.5 Carbohydrates [i](#)

There are no oligosaccharides in this entry.

### 5.6 Ligand geometry [i](#)

Of 9 ligands modelled in this entry, 1 is monoatomic - leaving 8 for Mogul analysis.

In the following table, the Counts columns list the number of bonds (or angles) for which Mogul statistics could be retrieved, the number of bonds (or angles) that are observed in the model and the number of bonds (or angles) that are defined in the Chemical Component Dictionary. The Link column lists molecule types, if any, to which the group is linked. The Z score for a bond length (or angle) is the number of standard deviations the observed value is removed from the expected value. A bond length (or angle) with  $|Z| > 2$  is considered an outlier worth inspection. RMSZ is the root-mean-square of all Z scores of the bond lengths (or angles).

Mol	Type	Chain	Res	Link	Bond lengths			Bond angles		
					Counts	RMSZ	# Z  > 2	Counts	RMSZ	# Z  > 2
9	UQ8	A	1007	-	33,33,53	3.74	12 (36%)	42,43,67	0.94	2 (4%)
8	3PE	A	1006	-	50,50,50	0.60	0	53,55,55	0.60	1 (1%)
8	3PE	A	1008	-	50,50,50	0.58	0	53,55,55	0.60	1 (1%)
8	3PE	A	1005	-	38,38,50	0.67	0	41,43,55	0.62	1 (2%)
6	HEO	A	1002	1	59,66,66	2.83	15 (25%)	57,102,102	3.41	18 (31%)
5	HEM	A	1001	1	50,50,50	1.38	7 (14%)	67,82,82	1.31	8 (11%)
8	3PE	C	301	-	50,50,50	0.62	0	53,55,55	0.63	1 (1%)
8	3PE	A	1004	-	50,50,50	0.60	0	53,55,55	0.52	1 (1%)

In the following table, the Chirals column lists the number of chiral outliers, the number of chiral centers analysed, the number of these observed in the model and the number defined in the Chemical Component Dictionary. Similar counts are reported in the Torsion and Rings columns. '-' means no outliers of that kind were identified.

Mol	Type	Chain	Res	Link	Chirals	Torsions	Rings
9	UQ8	A	1007	-	-	8/27/51/75	0/1/1/1
8	3PE	A	1006	-	-	31/54/54/54	-
8	3PE	A	1008	-	-	31/54/54/54	-
8	3PE	A	1005	-	-	22/42/42/54	-
6	HEO	A	1002	1	-	8/32/114/114	-
5	HEM	A	1001	1	-	4/14/54/54	-
8	3PE	C	301	-	-	26/54/54/54	-
8	3PE	A	1004	-	-	24/54/54/54	-

The worst 5 of 34 bond length outliers are listed below:

Mol	Chain	Res	Type	Atoms	Z	Observed(Å)	Ideal(Å)
9	A	1007	UQ8	C13-C14	8.74	1.53	1.33
9	A	1007	UQ8	C18-C19	8.73	1.53	1.33
9	A	1007	UQ8	C8-C9	8.70	1.53	1.33
9	A	1007	UQ8	O5-C5	7.51	1.40	1.23
9	A	1007	UQ8	O2-C2	7.48	1.40	1.23

The worst 5 of 33 bond angle outliers are listed below:

Mol	Chain	Res	Type	Atoms	Z	Observed(°)	Ideal(°)
6	A	1002	HEO	C4C-NC-C1C	-15.89	92.66	105.14
6	A	1002	HEO	C4A-NA-C1A	-15.53	92.95	105.14

*Continued on next page...*

*Continued from previous page...*

Mol	Chain	Res	Type	Atoms	Z	Observed(°)	Ideal(°)
6	A	1002	HEO	C13-C12-C11	-4.25	107.61	114.39
6	A	1002	HEO	C2D-C1D-ND	3.93	121.59	110.46
6	A	1002	HEO	C2B-C1B-NB	3.49	120.33	110.46

There are no chirality outliers.

5 of 154 torsion outliers are listed below:

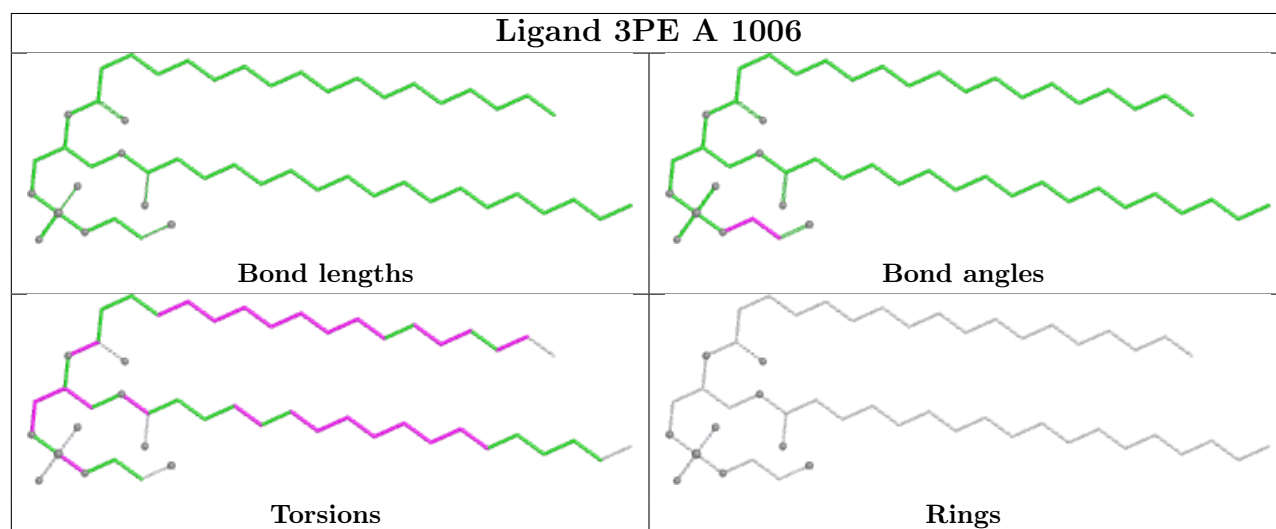
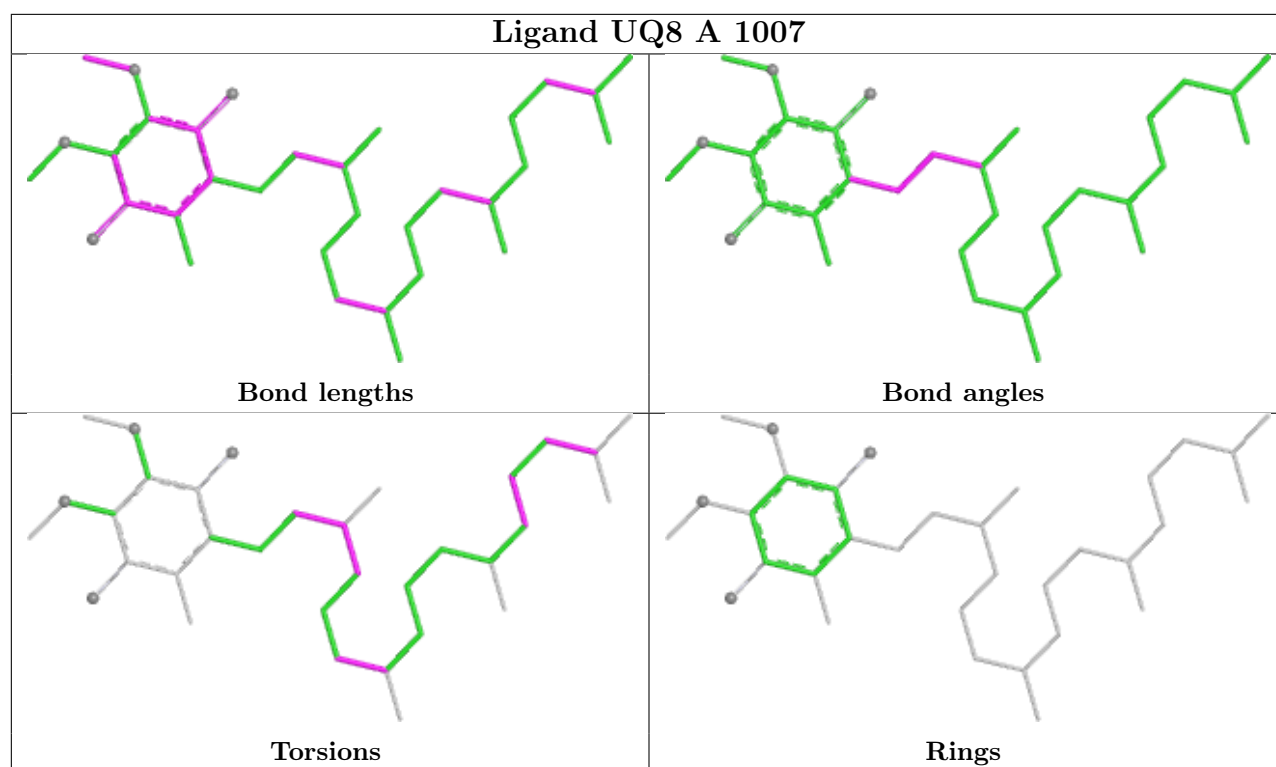
Mol	Chain	Res	Type	Atoms
6	A	1002	HEO	C2D-C3D-CAD-CBD
6	A	1002	HEO	C4D-C3D-CAD-CBD
8	A	1004	3PE	C1-O11-P-O12
8	A	1004	3PE	C1-O11-P-O13
8	A	1004	3PE	C1-O11-P-O14

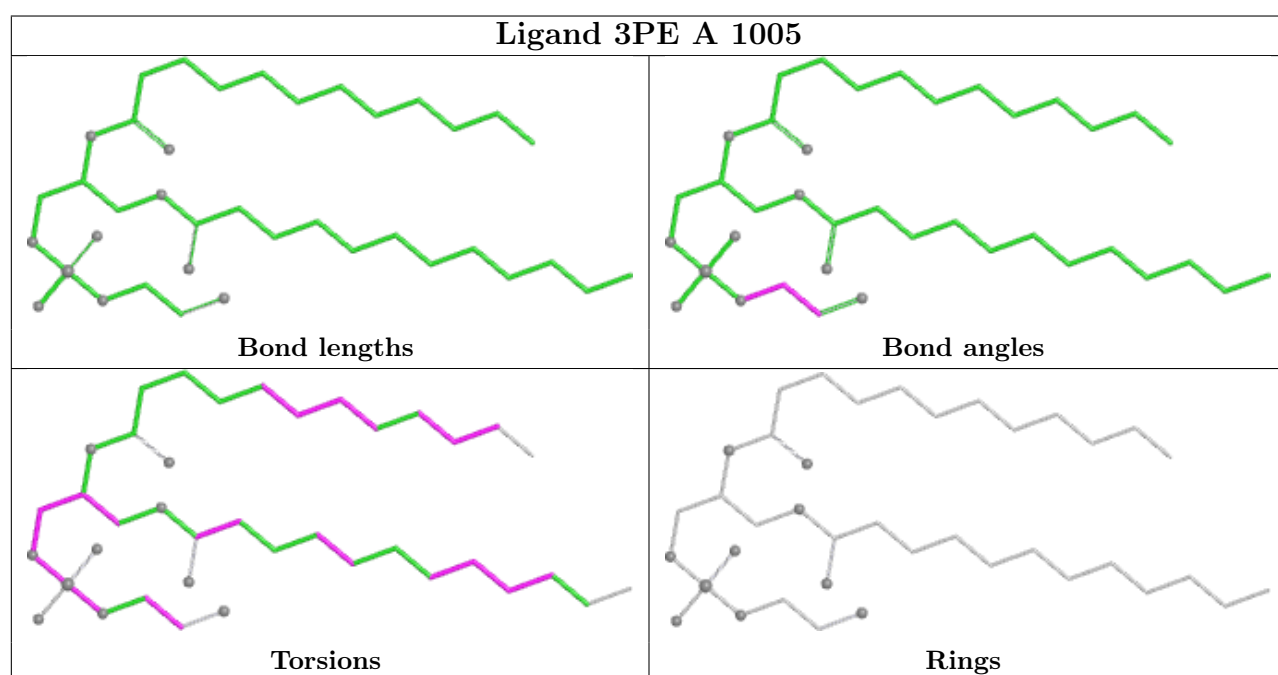
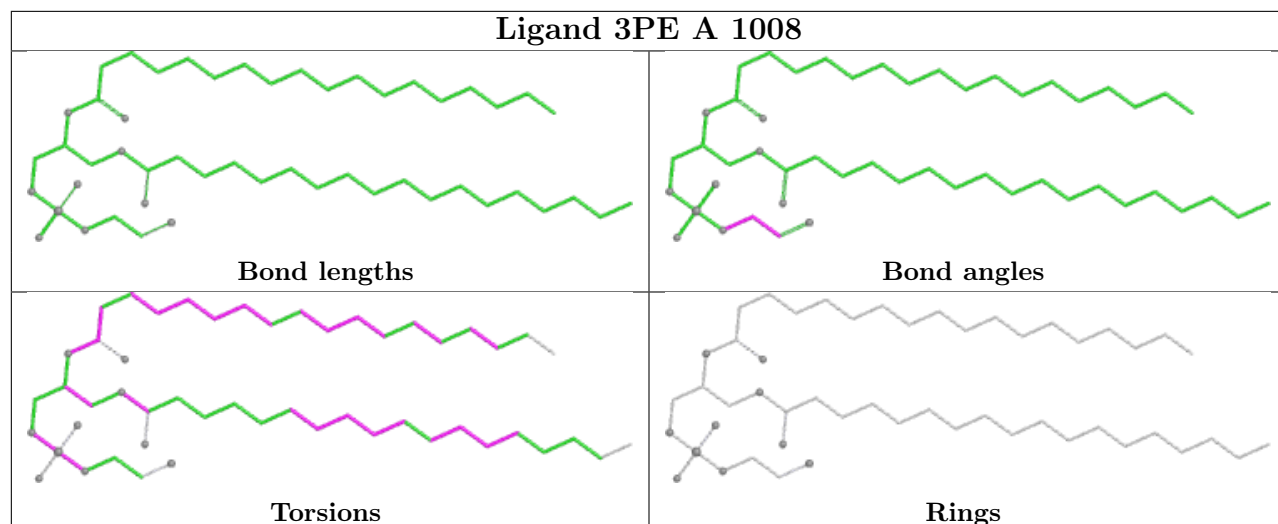
There are no ring outliers.

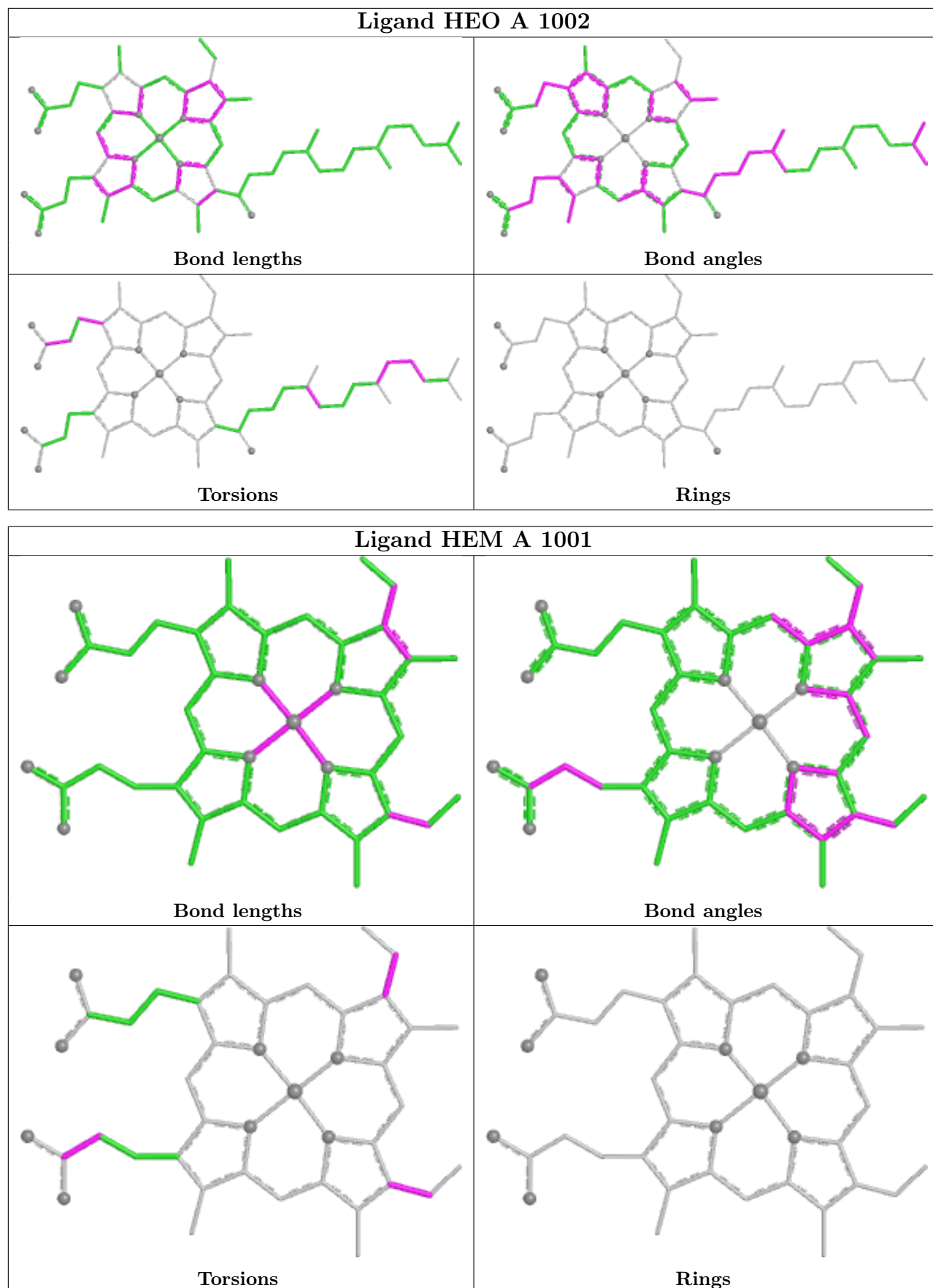
6 monomers are involved in 10 short contacts:

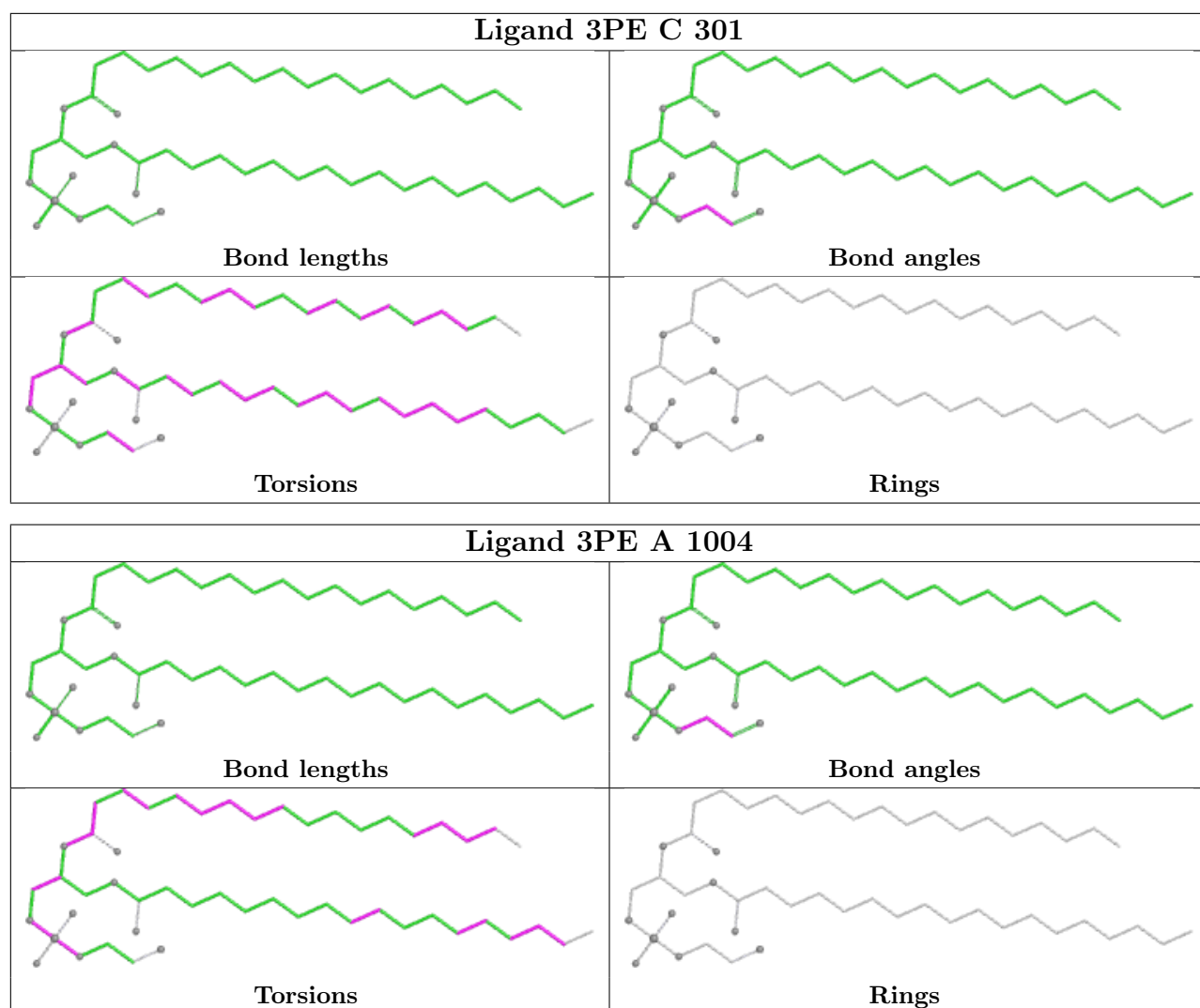
Mol	Chain	Res	Type	Clashes	Symm-Clashes
8	A	1006	3PE	1	0
8	A	1008	3PE	1	0
6	A	1002	HEO	2	0
5	A	1001	HEM	2	0
8	C	301	3PE	2	0
8	A	1004	3PE	2	0

The following is a two-dimensional graphical depiction of Mogul quality analysis of bond lengths, bond angles, torsion angles, and ring geometry for all instances of the Ligand of Interest. In addition, ligands with molecular weight > 250 and outliers as shown on the validation Tables will also be included. For torsion angles, if less than 5% of the Mogul distribution of torsion angles is within 10 degrees of the torsion angle in question, then that torsion angle is considered an outlier. Any bond that is central to one or more torsion angles identified as an outlier by Mogul will be highlighted in the graph. For rings, the root-mean-square deviation (RMSD) between the ring in question and similar rings identified by Mogul is calculated over all ring torsion angles. If the average RMSD is greater than 60 degrees and the minimal RMSD between the ring in question and any Mogul-identified rings is also greater than 60 degrees, then that ring is considered an outlier. The outliers are highlighted in purple. The color gray indicates Mogul did not find sufficient equivalents in the CSD to analyse the geometry.









## 5.7 Other polymers [i](#)

There are no such residues in this entry.

## 5.8 Polymer linkage issues [i](#)

There are no chain breaks in this entry.

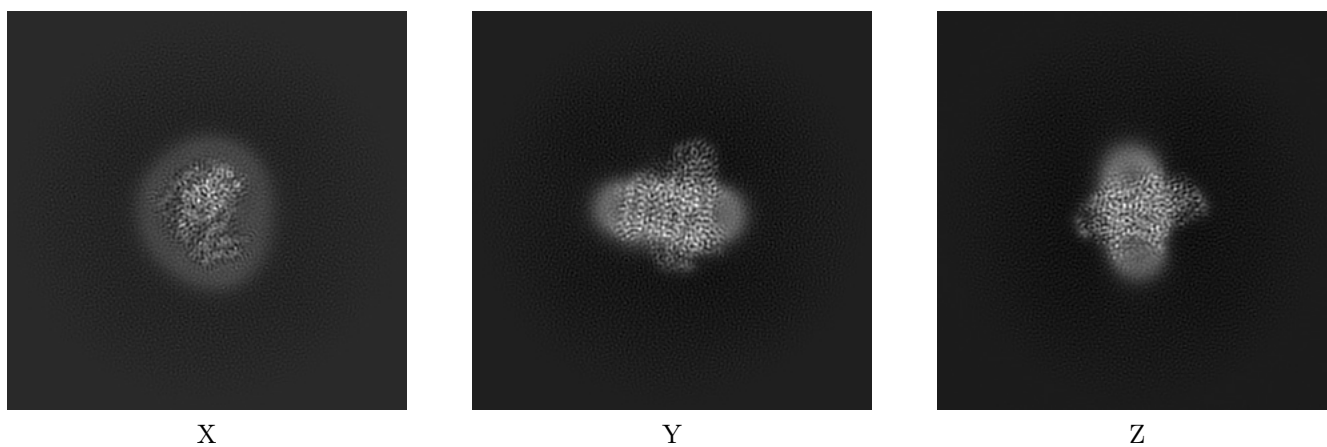
## 6 Map visualisation [i](#)

This section contains visualisations of the EMDB entry EMD-30475. These allow visual inspection of the internal detail of the map and identification of artifacts.

No raw map or half-maps were deposited for this entry and therefore no images, graphs, etc. pertaining to the raw map can be shown.

### 6.1 Orthogonal projections [i](#)

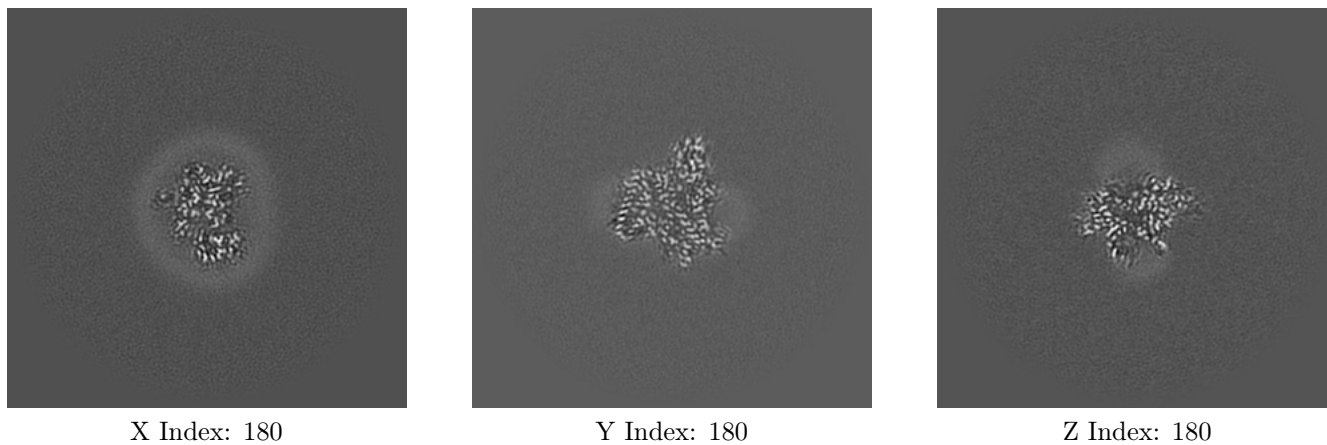
#### 6.1.1 Primary map



The images above show the map projected in three orthogonal directions.

### 6.2 Central slices [i](#)

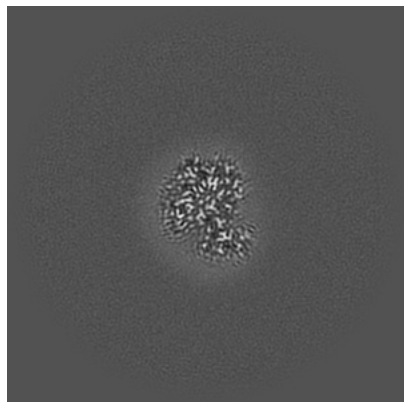
#### 6.2.1 Primary map



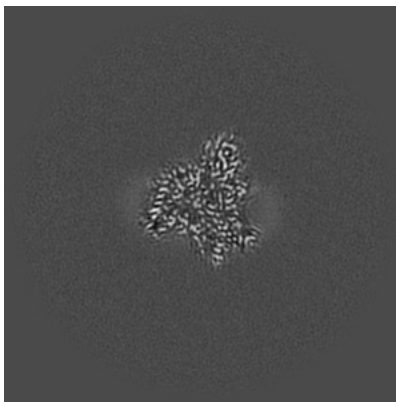
The images above show central slices of the map in three orthogonal directions.

## 6.3 Largest variance slices [i](#)

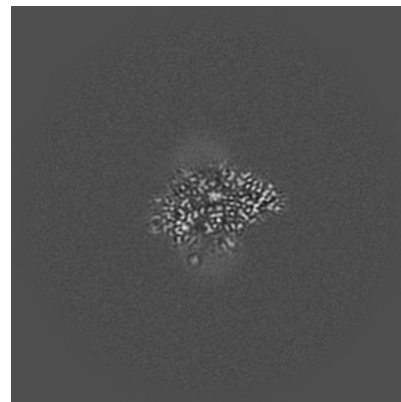
### 6.3.1 Primary map



X Index: 197



Y Index: 181

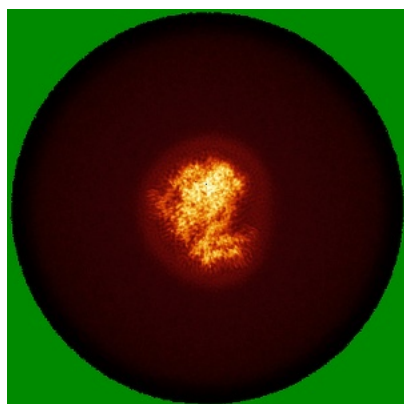


Z Index: 197

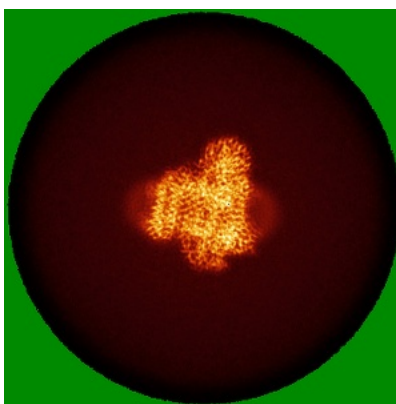
The images above show the largest variance slices of the map in three orthogonal directions.

## 6.4 Orthogonal standard-deviation projections (False-color) [i](#)

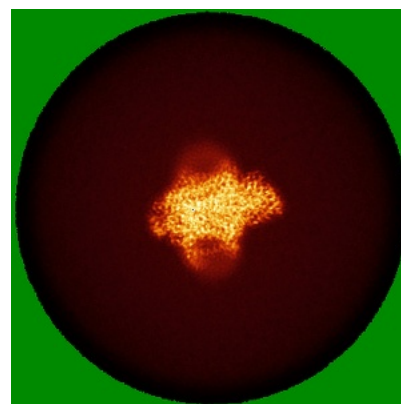
### 6.4.1 Primary map



X



Y

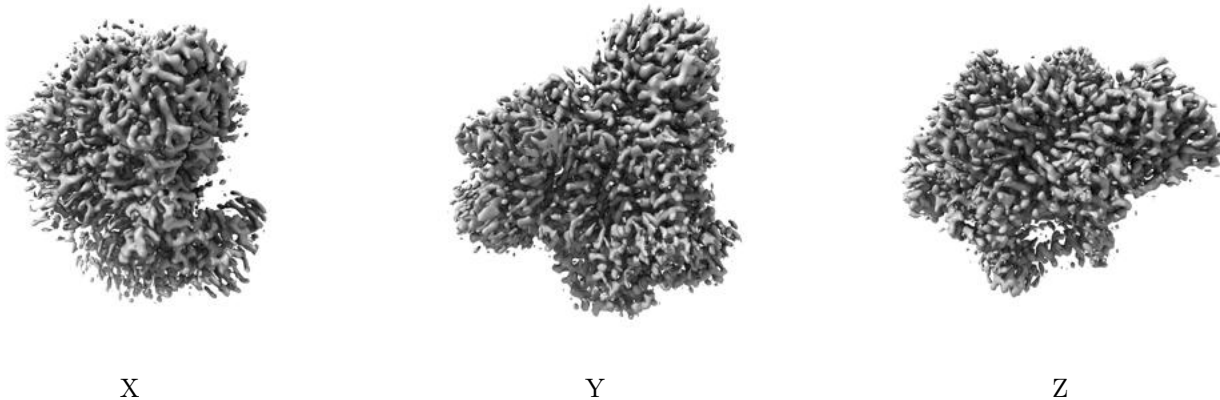


Z

The images above show the map standard deviation projections with false color in three orthogonal directions. Minimum values are shown in green, max in blue, and dark to light orange shades represent small to large values respectively.

## 6.5 Orthogonal surface views [i](#)

### 6.5.1 Primary map



The images above show the 3D surface view of the map at the recommended contour level 0.56. These images, in conjunction with the slice images, may facilitate assessment of whether an appropriate contour level has been provided.

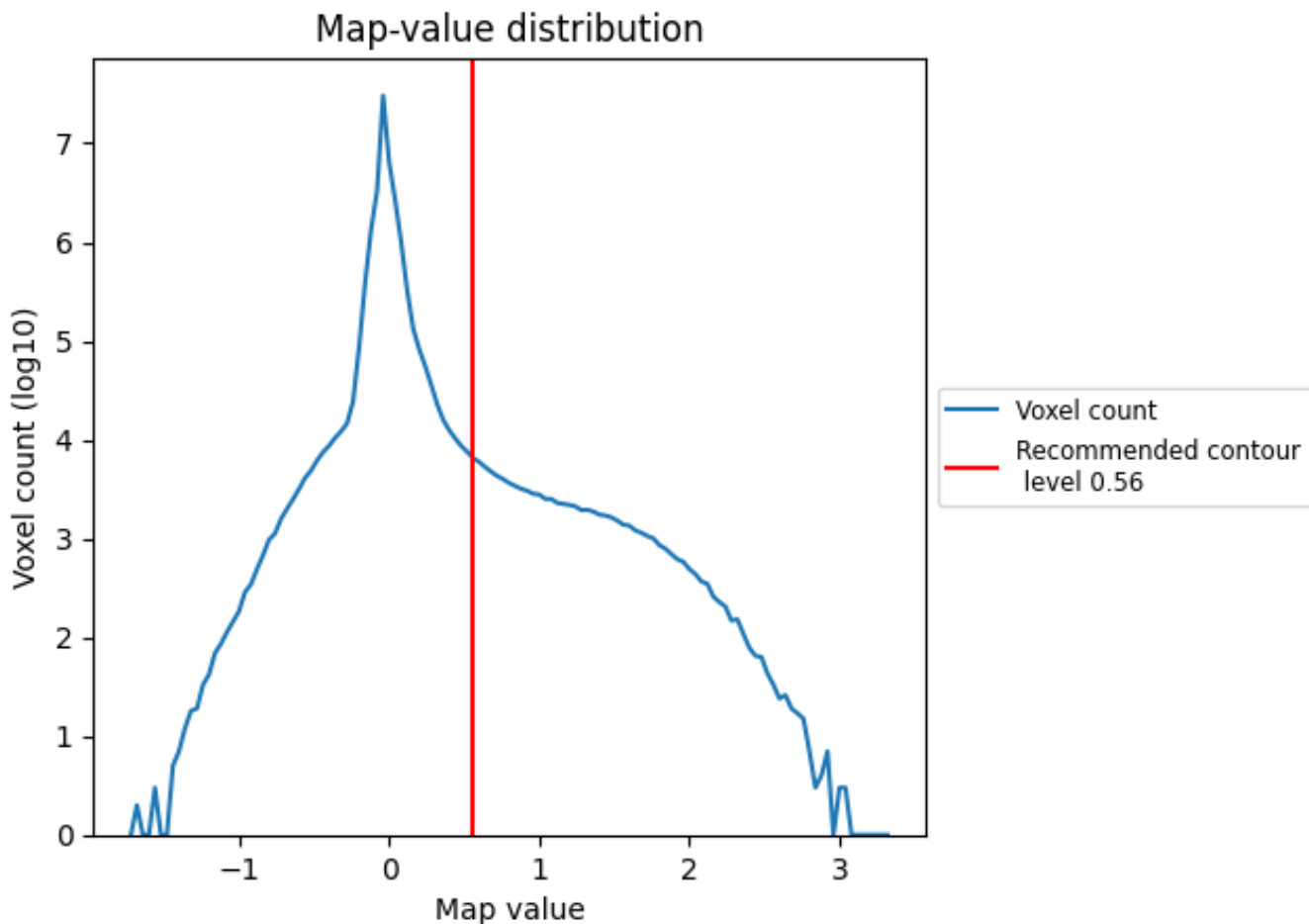
## 6.6 Mask visualisation [i](#)

This section was not generated. No masks/segmentation were deposited.

## 7 Map analysis [i](#)

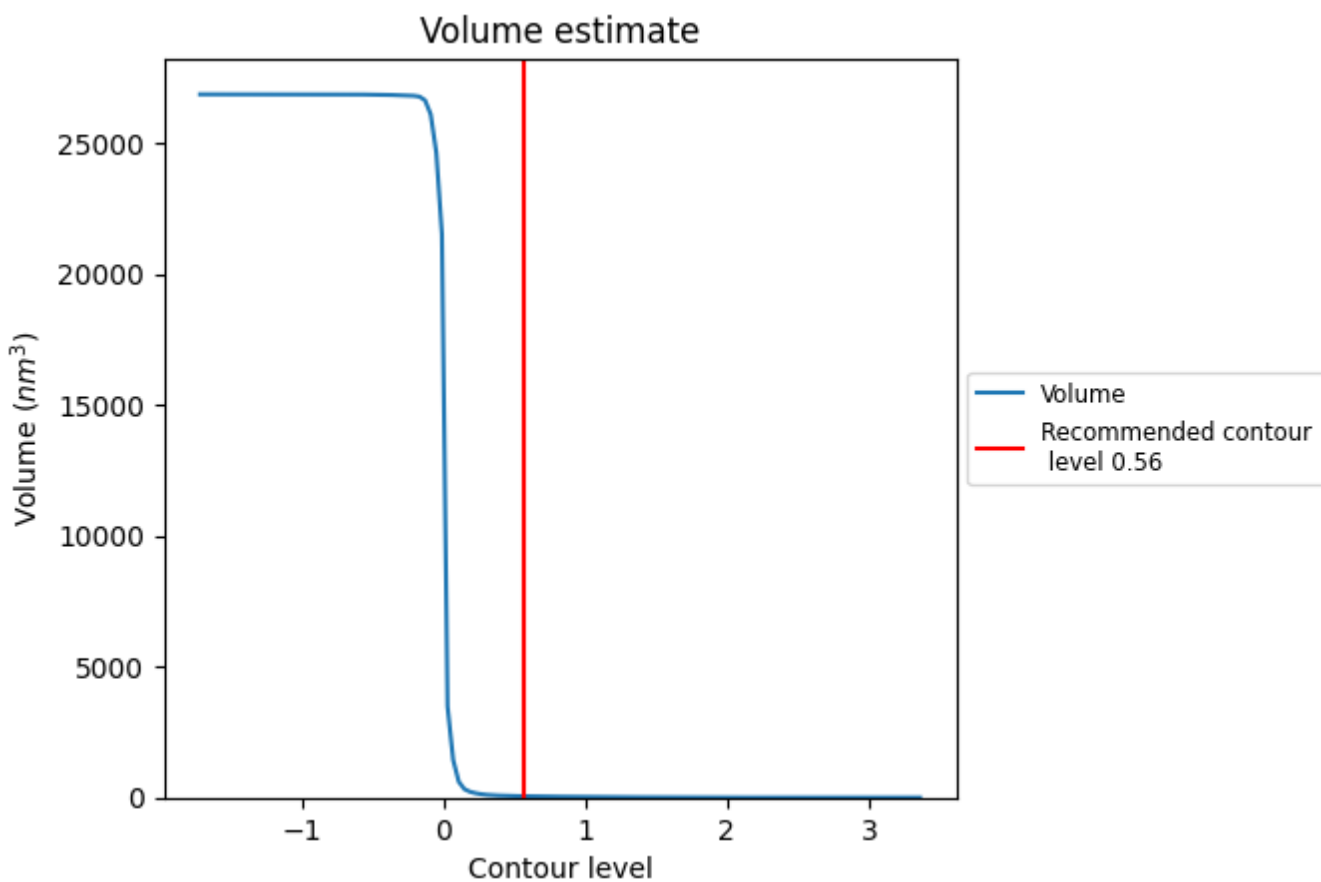
This section contains the results of statistical analysis of the map.

### 7.1 Map-value distribution [i](#)



The map-value distribution is plotted in 128 intervals along the x-axis. The y-axis is logarithmic. A spike in this graph at zero usually indicates that the volume has been masked.

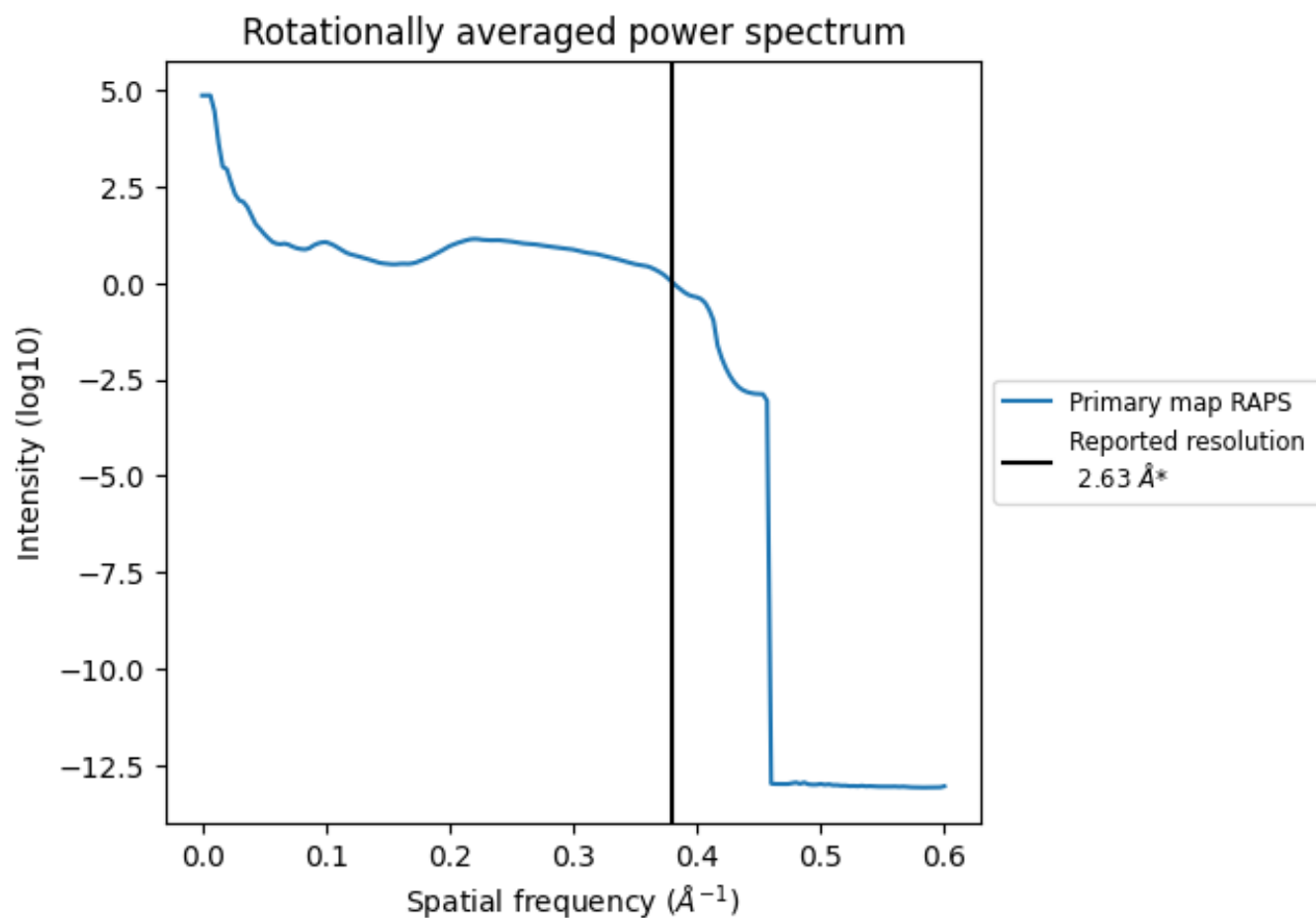
## 7.2 Volume estimate [\(i\)](#)



The volume at the recommended contour level is 52 nm<sup>3</sup>; this corresponds to an approximate mass of 47 kDa.

The volume estimate graph shows how the enclosed volume varies with the contour level. The recommended contour level is shown as a vertical line and the intersection between the line and the curve gives the volume of the enclosed surface at the given level.

### 7.3 Rotationally averaged power spectrum [i](#)



\*Reported resolution corresponds to spatial frequency of  $0.380 \text{\AA}^{-1}$

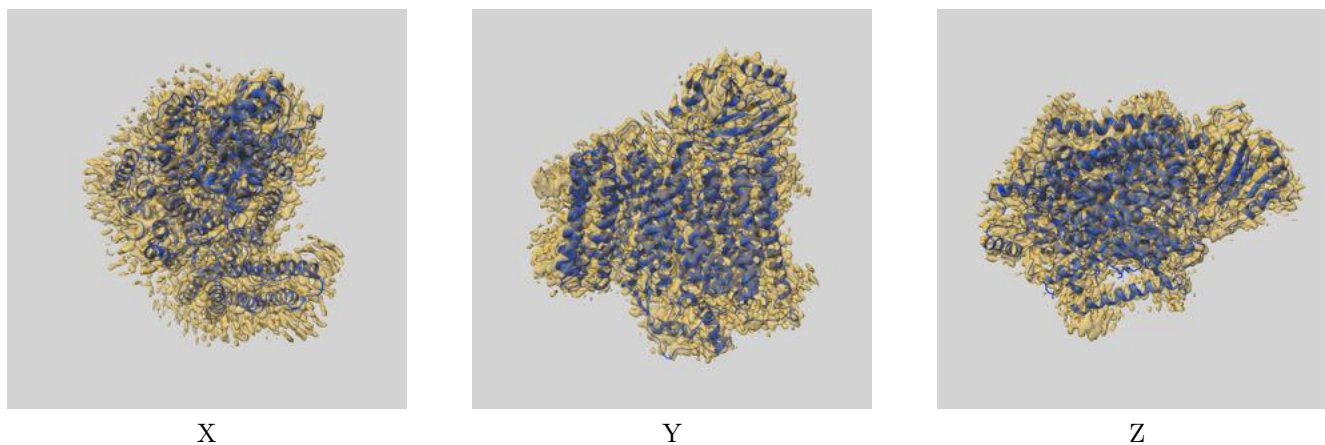
## 8 Fourier-Shell correlation

This section was not generated. No FSC curve or half-maps provided.

## 9 Map-model fit [i](#)

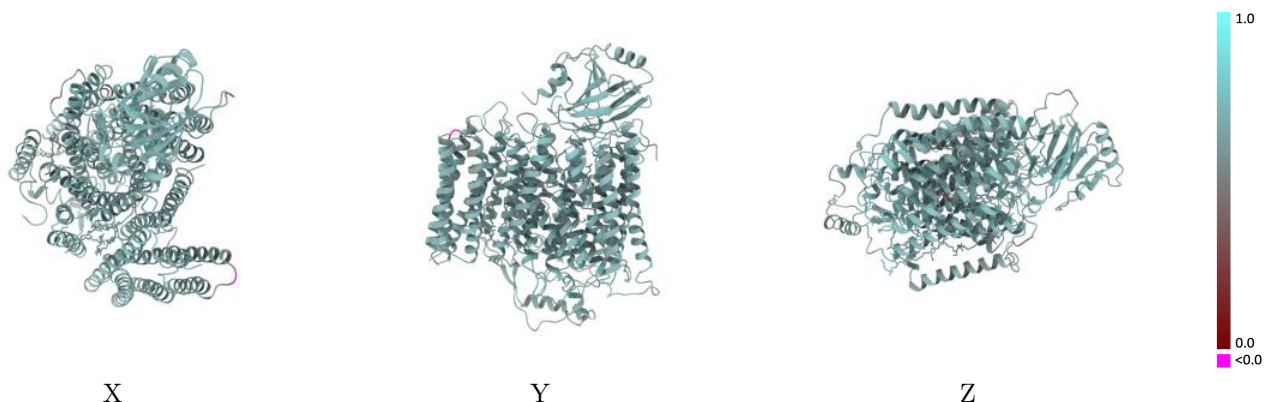
This section contains information regarding the fit between EMDB map EMD-30475 and PDB model 7CUW. Per-residue inclusion information can be found in section 3 on page 7.

### 9.1 Map-model overlay [i](#)



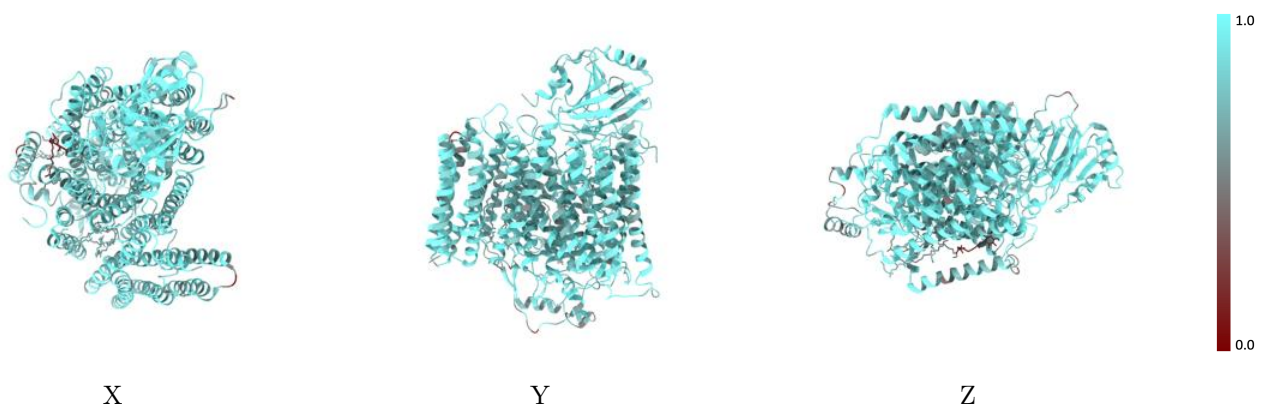
The images above show the 3D surface view of the map at the recommended contour level 0.56 at 50% transparency in yellow overlaid with a ribbon representation of the model coloured in blue. These images allow for the visual assessment of the quality of fit between the atomic model and the map.

## 9.2 Q-score mapped to coordinate model [i](#)



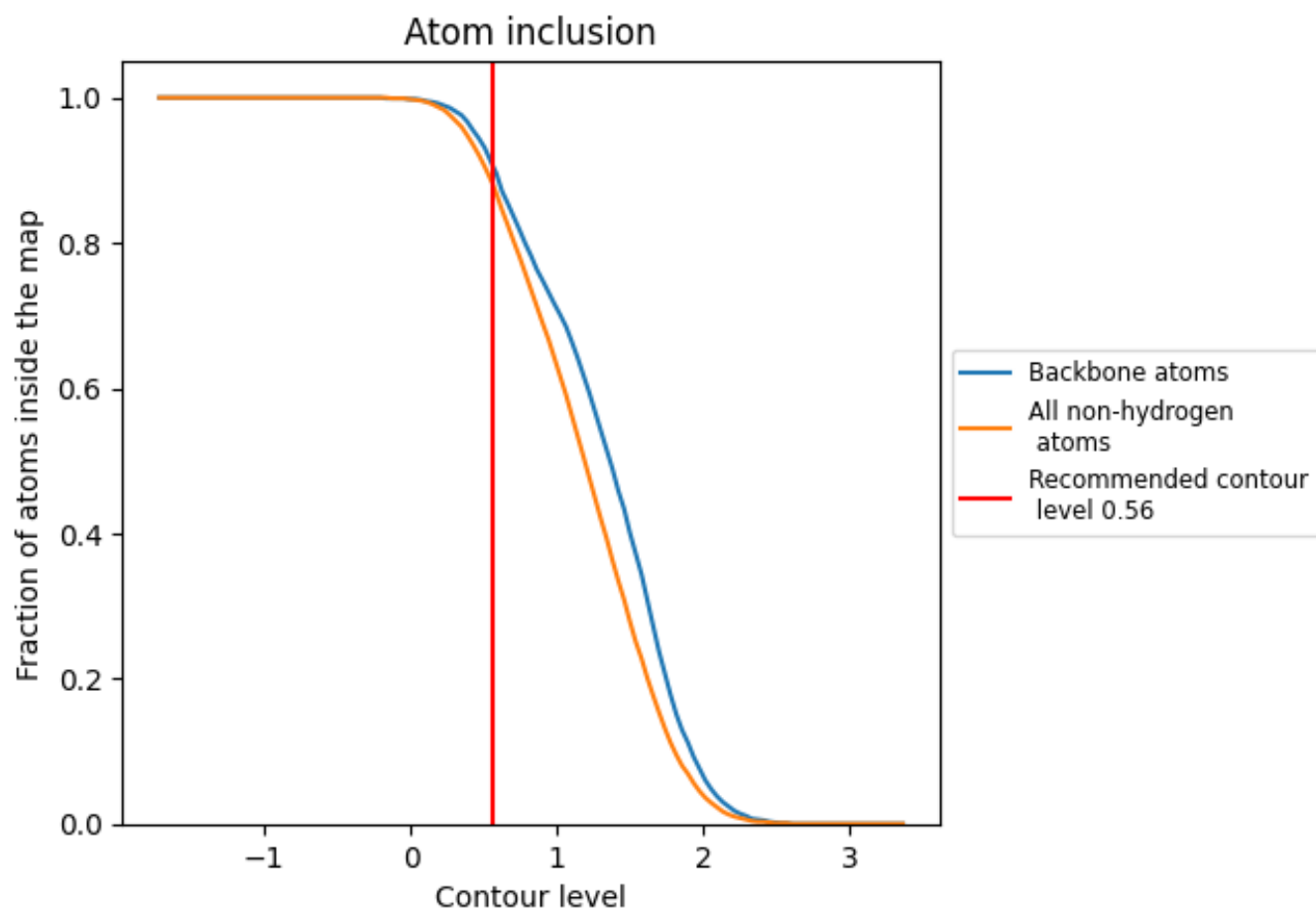
The images above show the model with each residue coloured according to its Q-score. This shows their resolvability in the map with higher Q-score values reflecting better resolvability. Please note: Q-score is calculating the resolvability of atoms, and thus high values are only expected at resolutions at which atoms can be resolved. Low Q-score values may therefore be expected for many entries.

## 9.3 Atom inclusion mapped to coordinate model [i](#)



The images above show the model with each residue coloured according to its atom inclusion. This shows to what extent they are inside the map at the recommended contour level (0.56).









## 9.4 Atom inclusion [i](#)



At the recommended contour level, 91% of all backbone atoms, 88% of all non-hydrogen atoms, are inside the map.

## 9.5 Map-model fit summary

The table lists the average atom inclusion at the recommended contour level (0.56) and Q-score for the entire model and for each chain.

Chain	Atom inclusion	Q-score
All	 0.8810	 0.6300
A	 0.8820	 0.6340
B	 0.8850	 0.6280
C	 0.9000	 0.6340
D	 0.8270	 0.5980

