



# wwPDB X-ray Structure Validation Summary Report ⓘ

Mar 5, 2026 – 06:28 PM UTC

PDB ID : 6CWE / pdb\_00006cwe  
Title : Structure of alpha-GSA[8,6P] bound by CD1d and in complex with the Va14Vb8.2 TCR  
Authors : Wang, J.; Zajonc, D.  
Deposited on : 2018-03-30  
Resolution : 2.20 Å (reported)

This is a wwPDB X-ray Structure Validation Summary Report for a publicly released PDB entry.

We welcome your comments at [validation@mail.wwpdb.org](mailto:validation@mail.wwpdb.org)

A user guide is available at

<https://www.wwpdb.org/validation/2017/XrayValidationReportHelp>

with specific help available everywhere you see the ⓘ symbol.

The types of validation reports are described at

<http://www.wwpdb.org/validation/2017/FAQs#types>.

---

The following versions of software and data (see [references ⓘ](#)) were used in the production of this report:

MolProbity : 4-5-2 with Phenix2.0  
Mogul : 2022.3.0, CSD as543be (2022)  
Xtrriage (Phenix) : 2.0  
EDS : 3.0  
Buster-report : wwPDB partial adaption of 1.1.7 (2018)  
Percentile statistics : 20250101.v01 (using entries in the PDB archive January 1st 2025)  
CCP4 : 9.0.010 (Gargrove)  
Density-Fitness : 1.0.12  
Ideal geometry (proteins) : Engh & Huber (2001)  
Ideal geometry (DNA, RNA) : Parkinson et al. (1996)  
Validation Pipeline (wwPDB-VP) : 2.49

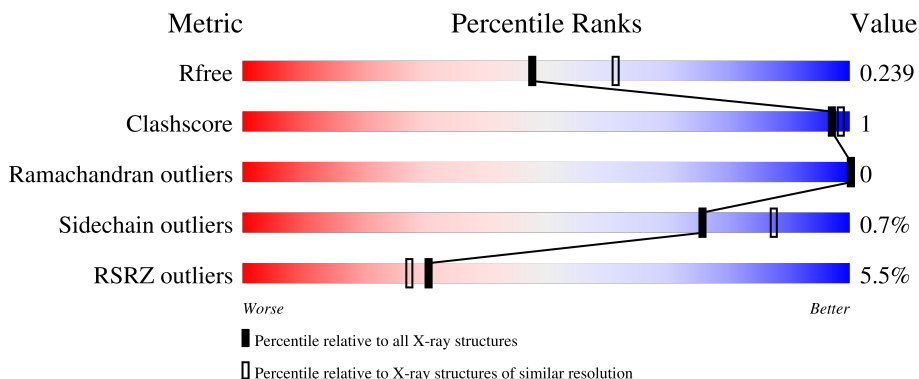
# 1 Overall quality at a glance

The following experimental techniques were used to determine the structure:

*X-RAY DIFFRACTION*

The reported resolution of this entry is 2.20 Å.

Percentile scores (ranging between 0-100) for global validation metrics of the entry are shown in the following graphic. The table shows the number of entries on which the scores are based.



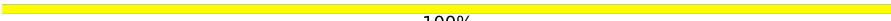
Metric	Whole archive (#Entries)	Similar resolution (#Entries, resolution range(Å))
$R_{free}$	180053	6164 (2.20-2.20)
Clashscore	190562	6851 (2.20-2.20)
Ramachandran outliers	187476	6768 (2.20-2.20)
Sidechain outliers	187428	6769 (2.20-2.20)
RSRZ outliers	180081	6166 (2.20-2.20)

The table below summarises the geometric issues observed across the polymeric chains and their fit to the electron density. The red, orange, yellow and green segments of the lower bar indicate the fraction of residues that contain outliers for  $\geq 3$ , 2, 1 and 0 types of geometric quality criteria respectively. A grey segment represents the fraction of residues that are not modelled. The numeric value for each fraction is indicated below the corresponding segment, with a dot representing fractions  $\leq 5\%$ . The upper red bar (where present) indicates the fraction of residues that have poor fit to the electron density. The numeric value is given above the bar.

Mol	Chain	Length	Quality of chain
1	A	285	 7% 88% 5% 6%
2	B	99	 5% 97% ..
3	C	209	 6% 94% . 5%
4	D	241	 2% 98% ..
5	E	2	 50% 50%

*Continued on next page...*

*Continued from previous page...*

Mol	Chain	Length	Quality of chain
6	F	3	 100%

## 2 Entry composition [i](#)

There are 10 unique types of molecules in this entry. The entry contains 6753 atoms, of which 0 are hydrogens and 0 are deuteriums.

In the tables below, the ZeroOcc column contains the number of atoms modelled with zero occupancy, the AltConf column contains the number of residues with at least one atom in alternate conformation and the Trace column contains the number of residues modelled with at most 2 atoms.

- Molecule 1 is a protein called Antigen-presenting glycoprotein CD1d1.

Mol	Chain	Residues	Atoms					ZeroOcc	AltConf	Trace
			Total	C	N	O	S			
1	A	267	2151	1373	368	397	13	0	0	0

There are 6 discrepancies between the modelled and reference sequences:

Chain	Residue	Modelled	Actual	Comment	Reference
A	280	HIS	-	expression tag	UNP A0A0R4J090
A	281	HIS	-	expression tag	UNP A0A0R4J090
A	282	HIS	-	expression tag	UNP A0A0R4J090
A	283	HIS	-	expression tag	UNP A0A0R4J090
A	284	HIS	-	expression tag	UNP A0A0R4J090
A	285	HIS	-	expression tag	UNP A0A0R4J090

- Molecule 2 is a protein called Beta-2-microglobulin.

Mol	Chain	Residues	Atoms					ZeroOcc	AltConf	Trace
			Total	C	N	O	S			
2	B	98	806	514	136	149	7	0	0	0

- Molecule 3 is a protein called Chimeric T cell antigen receptor alpha chain Va14,Va24,Ja18.

Mol	Chain	Residues	Atoms					ZeroOcc	AltConf	Trace
			Total	C	N	O	S			
3	C	199	1520	942	259	311	8	0	0	0

- Molecule 4 is a protein called Chimeric T cell antigen receptor beta chain Vb8.2, vb11.

Mol	Chain	Residues	Atoms					ZeroOcc	AltConf	Trace
			Total	C	N	O	S			
4	D	239	1866	1172	333	355	6	0	1	0

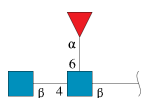
- Molecule 5 is an oligosaccharide called 2-acetamido-2-deoxy-beta-D-glucopyranose-(1-4)-2-a

cetamido-2-deoxy-beta-D-glucopyranose.



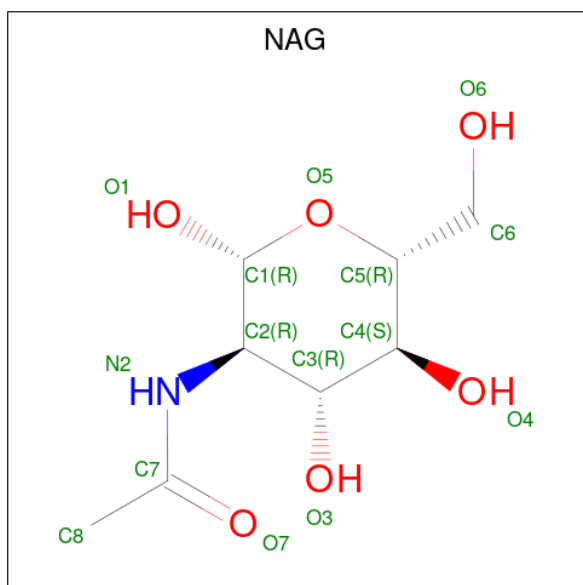
Mol	Chain	Residues	Atoms				ZeroOcc	AltConf	Trace
			Total	C	N	O			
5	E	2	28	16	2	10	0	0	0

- Molecule 6 is an oligosaccharide called 2-acetamido-2-deoxy-beta-D-glucopyranose-(1-4)-[alpha-L-fucopyranose-(1-6)]2-acetamido-2-deoxy-beta-D-glucopyranose.



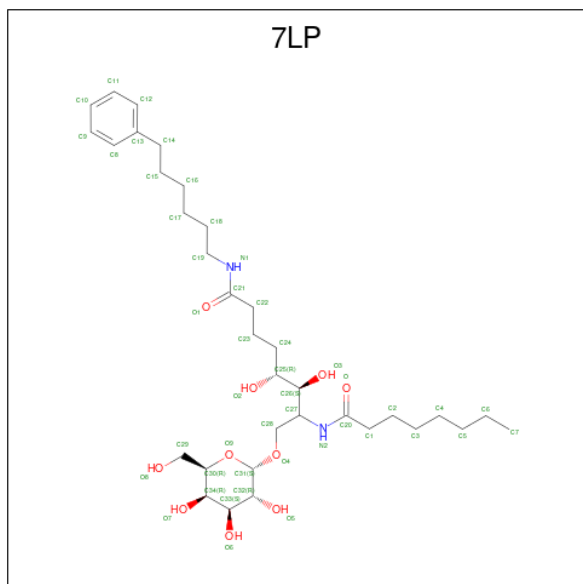
Mol	Chain	Residues	Atoms				ZeroOcc	AltConf	Trace
			Total	C	N	O			
6	F	3	38	22	2	14	0	0	0

- Molecule 7 is 2-acetamido-2-deoxy-beta-D-glucopyranose (CCD ID: NAG) (formula: C<sub>8</sub>H<sub>15</sub>NO<sub>6</sub>).



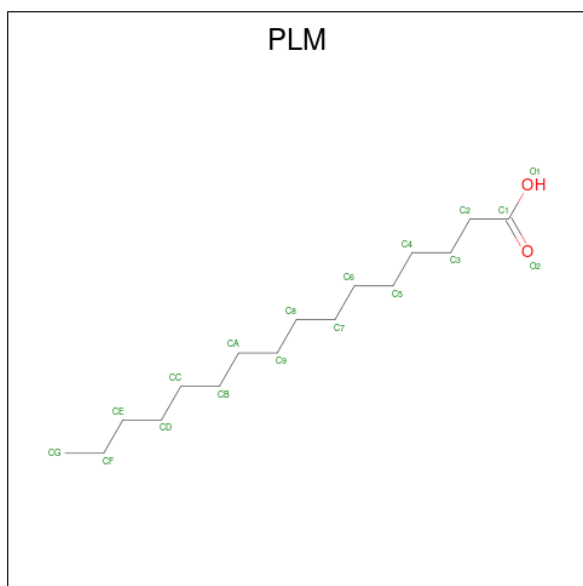
Mol	Chain	Residues	Atoms				ZeroOcc	AltConf
			Total	C	N	O		
7	A	1	14	8	1	5	0	0

- Molecule 8 is (5R,6S,7S)-5,6-dihydroxy-7-(octanoylamino)-N-(6-phenylhexyl)-8-{[(2S,3R,4S,5R,6R)-3,4,5-trihydroxy-6-(hydroxymethyl)tetrahydro-2H-pyran-2-yl]oxy}octanamide (CCD ID: 7LP) (formula: C<sub>34</sub>H<sub>58</sub>N<sub>2</sub>O<sub>10</sub>).



Mol	Chain	Residues	Atoms			ZeroOcc	AltConf	
			Total	C	N			O
8	A	1	46	34	2	10	0	0

- Molecule 9 is PALMITIC ACID (CCD ID: PLM) (formula: C<sub>16</sub>H<sub>32</sub>O<sub>2</sub>).



Mol	Chain	Residues	Atoms			ZeroOcc	AltConf
			Total	C	O		
9	A	1	18	16	2	0	0

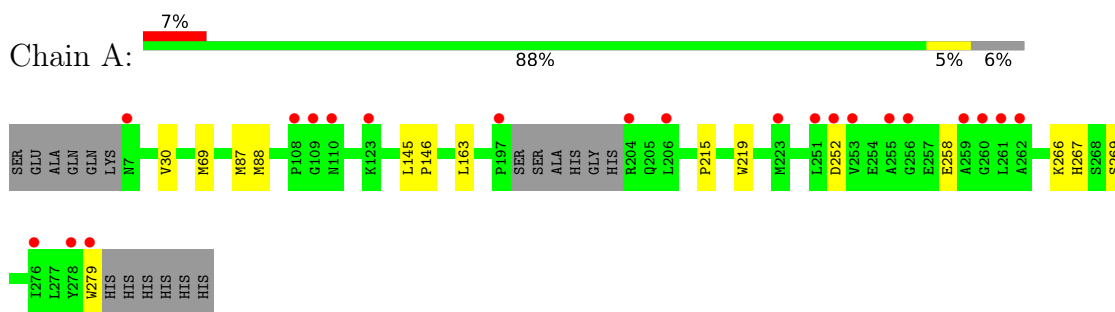
- Molecule 10 is water.

<b>Mol</b>	<b>Chain</b>	<b>Residues</b>	<b>Atoms</b>		<b>ZeroOcc</b>	<b>AltConf</b>
10	A	98	Total 98	O 98	0	0
10	B	23	Total 23	O 23	0	0
10	C	58	Total 58	O 58	0	0
10	D	87	Total 87	O 87	0	0

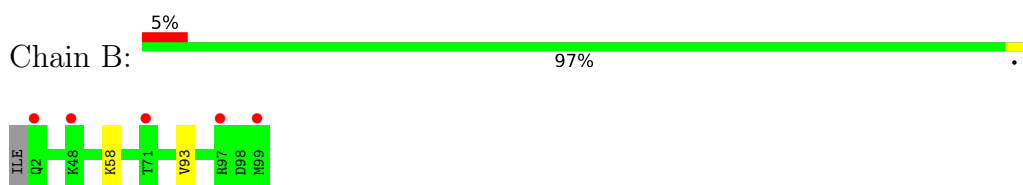
### 3 Residue-property plots [i](#)

These plots are drawn for all protein, RNA, DNA and oligosaccharide chains in the entry. The first graphic for a chain summarises the proportions of the various outlier classes displayed in the second graphic. The second graphic shows the sequence view annotated by issues in geometry and electron density. Residues are color-coded according to the number of geometric quality criteria for which they contain at least one outlier: green = 0, yellow = 1, orange = 2 and red = 3 or more. A red dot above a residue indicates a poor fit to the electron density ( $RSRZ > 2$ ). Stretches of 2 or more consecutive residues without any outlier are shown as a green connector. Residues present in the sample, but not in the model, are shown in grey.

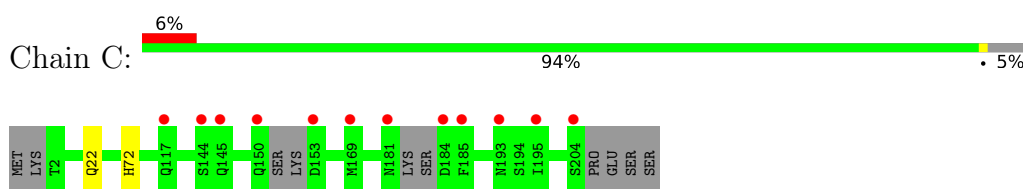
- Molecule 1: Antigen-presenting glycoprotein CD1d1



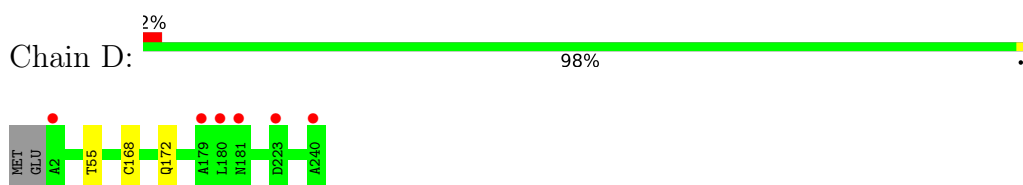
- Molecule 2: Beta-2-microglobulin



- Molecule 3: Chimeric T cell antigen receptor alpha chain Va14,Va24,Ja18



- Molecule 4: Chimeric T cell antigen receptor beta chain Vb8.2, vb11



- Molecule 5: 2-acetamido-2-deoxy-beta-D-glucopyranose-(1-4)-2-acetamido-2-deoxy-beta-D-glucopyranose



MAG1  
MAG2

- Molecule 6: 2-acetamido-2-deoxy-beta-D-glucofuranose-(1-4)-[alpha-L-fucofuranose-(1-6)]2-acetamido-2-deoxy-beta-D-glucofuranose

Chain F:

100%

MAG1  
MAG2  
FUC3

## 4 Data and refinement statistics

Property	Value	Source
Space group	C 2 2 21	Depositor
Cell constants a, b, c, $\alpha$ , $\beta$ , $\gamma$	78.18Å 190.17Å 150.97Å 90.00° 90.00° 90.00°	Depositor
Resolution (Å)	40.00 – 2.20 40.00 – 2.20	Depositor EDS
% Data completeness (in resolution range)	99.2 (40.00-2.20) 99.4 (40.00-2.20)	Depositor EDS
$R_{merge}$	0.08	Depositor
$R_{sym}$	(Not available)	Depositor
$\langle I/\sigma(I) \rangle$ <sup>1</sup>	2.81 (at 2.20Å)	Xtrriage
Refinement program	REFMAC 5.8.0155	Depositor
R, $R_{free}$	0.204 , 0.236 0.208 , 0.239	Depositor DCC
$R_{free}$ test set	2831 reflections (4.91%)	wwPDB-VP
Wilson B-factor (Å <sup>2</sup> )	36.3	Xtrriage
Anisotropy	0.062	Xtrriage
Bulk solvent $k_{sol}$ (e/Å <sup>3</sup> ), $B_{sol}$ (Å <sup>2</sup> )	0.33 , 19.8	EDS
L-test for twinning <sup>2</sup>	$\langle  L  \rangle = 0.49$ , $\langle L^2 \rangle = 0.33$	Xtrriage
Estimated twinning fraction	No twinning to report.	Xtrriage
$F_o, F_c$ correlation	0.95	EDS
Total number of atoms	6753	wwPDB-VP
Average B, all atoms (Å <sup>2</sup> )	42.0	wwPDB-VP

Xtrriage's analysis on translational NCS is as follows: *The largest off-origin peak in the Patterson function is 3.73% of the height of the origin peak. No significant pseudotranslation is detected.*

<sup>1</sup>Intensities estimated from amplitudes.

<sup>2</sup>Theoretical values of  $\langle |L| \rangle$ ,  $\langle L^2 \rangle$  for acentric reflections are 0.5, 0.333 respectively for untwinned datasets, and 0.375, 0.2 for perfectly twinned datasets.

## 5 Model quality [i](#)

### 5.1 Standard geometry [i](#)

Bond lengths and bond angles in the following residue types are not validated in this section: 7LP, PLM, NAG, FUC

The Z score for a bond length (or angle) is the number of standard deviations the observed value is removed from the expected value. A bond length (or angle) with  $|Z| > 5$  is considered an outlier worth inspection. RMSZ is the root-mean-square of all Z scores of the bond lengths (or angles).

Mol	Chain	Bond lengths		Bond angles	
		RMSZ	# Z  >5	RMSZ	# Z  >5
1	A	0.58	0/2213	0.75	0/3008
2	B	0.57	0/832	0.74	0/1129
3	C	0.61	0/1546	0.73	0/2102
4	D	0.61	0/1920	0.73	0/2620
All	All	0.60	0/6511	0.74	0/8859

There are no bond length outliers.

There are no bond angle outliers.

There are no chirality outliers.

There are no planarity outliers.

### 5.2 Too-close contacts [i](#)

In the following table, the Non-H and H(model) columns list the number of non-hydrogen atoms and hydrogen atoms in the chain respectively. The H(added) column lists the number of hydrogen atoms added and optimized by MolProbity. The Clashes column lists the number of clashes within the asymmetric unit, whereas Symm-Clashes lists symmetry-related clashes.

Mol	Chain	Non-H	H(model)	H(added)	Clashes	Symm-Clashes
1	A	2151	0	2061	9	0
2	B	806	0	772	0	0
3	C	1520	0	1435	1	0
4	D	1866	0	1763	1	0
5	E	28	0	25	0	0
6	F	38	0	34	0	0
7	A	14	0	13	0	0
8	A	46	0	0	0	0
9	A	18	0	31	1	0

*Continued on next page...*

*Continued from previous page...*

Mol	Chain	Non-H	H(model)	H(added)	Clashes	Symm-Clashes
10	A	98	0	0	0	1
10	B	23	0	0	0	0
10	C	58	0	0	0	0
10	D	87	0	0	1	0
All	All	6753	0	6134	11	1

The all-atom clashscore is defined as the number of clashes found per 1000 atoms (including hydrogen atoms). The all-atom clashscore for this structure is 1.

The worst 5 of 11 close contacts within the same asymmetric unit are listed below, sorted by their clash magnitude.

Atom-1	Atom-2	Interatomic distance (Å)	Clash overlap (Å)
4:D:55:THR:HG22	10:D:340:HOH:O	2.02	0.58
1:A:258:GLU:HB3	1:A:279:TRP:CD1	2.42	0.55
3:C:22:GLN:HE21	3:C:72:HIS:HE1	1.60	0.50
1:A:267:HIS:HD2	1:A:269:SER:OG	1.95	0.49
1:A:219:TRP:HB3	1:A:266:LYS:HB2	1.95	0.48

All (1) symmetry-related close contacts are listed below. The label for Atom-2 includes the symmetry operator and encoded unit-cell translations to be applied.

Atom-1	Atom-2	Interatomic distance (Å)	Clash overlap (Å)
10:A:491:HOH:O	10:A:491:HOH:O[3_455]	1.75	0.45

## 5.3 Torsion angles [i](#)

### 5.3.1 Protein backbone [i](#)

In the following table, the Percentiles column shows the percent Ramachandran outliers of the chain as a percentile score with respect to all X-ray entries followed by that with respect to entries of similar resolution.

The Analysed column shows the number of residues for which the backbone conformation was analysed, and the total number of residues.

Mol	Chain	Analysed	Favoured	Allowed	Outliers	Percentiles
1	A	263/285 (92%)	257 (98%)	6 (2%)	0	<a href="#">100</a> <a href="#">100</a>
2	B	96/99 (97%)	93 (97%)	3 (3%)	0	<a href="#">100</a> <a href="#">100</a>

*Continued on next page...*

*Continued from previous page...*

Mol	Chain	Analysed	Favoured	Allowed	Outliers	Percentiles	
3	C	193/209 (92%)	186 (96%)	7 (4%)	0	100	100
4	D	238/241 (99%)	235 (99%)	3 (1%)	0	100	100
All	All	790/834 (95%)	771 (98%)	19 (2%)	0	100	100

There are no Ramachandran outliers to report.

### 5.3.2 Protein sidechains [\(i\)](#)

In the following table, the Percentiles column shows the percent sidechain outliers of the chain as a percentile score with respect to all X-ray entries followed by that with respect to entries of similar resolution.

The Analysed column shows the number of residues for which the sidechain conformation was analysed, and the total number of residues.

Mol	Chain	Analysed	Rotameric	Outliers	Percentiles	
1	A	234/249 (94%)	233 (100%)	1 (0%)	84	92
2	B	91/93 (98%)	89 (98%)	2 (2%)	45	61
3	C	173/188 (92%)	173 (100%)	0	100	100
4	D	200/208 (96%)	198 (99%)	2 (1%)	68	81
All	All	698/738 (95%)	693 (99%)	5 (1%)	76	87

All (5) residues with a non-rotameric sidechain are listed below:

Mol	Chain	Res	Type
1	A	252	ASP
2	B	58	LYS
2	B	93	VAL
4	D	168	CYS
4	D	172	GLN

Sometimes sidechains can be flipped to improve hydrogen bonding and reduce clashes. 5 of 7 such sidechains are listed below:

Mol	Chain	Res	Type
2	B	2	GLN
3	C	22	GLN
4	D	24	ASN
3	C	31	ASN

*Continued on next page...*

*Continued from previous page...*

Mol	Chain	Res	Type
1	A	267	HIS

### 5.3.3 RNA [i](#)

There are no RNA molecules in this entry.

## 5.4 Non-standard residues in protein, DNA, RNA chains [i](#)

There are no non-standard protein/DNA/RNA residues in this entry.

## 5.5 Carbohydrates [i](#)

5 monosaccharides are modelled in this entry.

In the following table, the Counts columns list the number of bonds (or angles) for which Mogul statistics could be retrieved, the number of bonds (or angles) that are observed in the model and the number of bonds (or angles) that are defined in the Chemical Component Dictionary. The Link column lists molecule types, if any, to which the group is linked. The Z score for a bond length (or angle) is the number of standard deviations the observed value is removed from the expected value. A bond length (or angle) with  $|Z| > 2$  is considered an outlier worth inspection. RMSZ is the root-mean-square of all Z scores of the bond lengths (or angles).

Mol	Type	Chain	Res	Link	Bond lengths			Bond angles		
					Counts	RMSZ	# Z  > 2	Counts	RMSZ	# Z  > 2
5	NAG	E	1	5,1	14,14,15	0.41	0	17,19,21	0.78	0
5	NAG	E	2	5	14,14,15	0.31	0	17,19,21	0.99	1 (5%)
6	NAG	F	1	1,6	14,14,15	0.59	0	17,19,21	1.52	4 (23%)
6	NAG	F	2	6	14,14,15	0.44	0	17,19,21	1.14	2 (11%)
6	FUC	F	3	6	10,10,11	0.97	0	14,14,16	1.53	1 (7%)

In the following table, the Chirals column lists the number of chiral outliers, the number of chiral centers analysed, the number of these observed in the model and the number defined in the Chemical Component Dictionary. Similar counts are reported in the Torsion and Rings columns. '2' means no outliers of that kind were identified.

Mol	Type	Chain	Res	Link	Chirals	Torsions	Rings
5	NAG	E	1	5,1	-	0/6/23/26	0/1/1/1
5	NAG	E	2	5	-	2/6/23/26	0/1/1/1
6	NAG	F	1	1,6	-	2/6/23/26	0/1/1/1
6	NAG	F	2	6	-	2/6/23/26	0/1/1/1

*Continued on next page...*

*Continued from previous page...*

Mol	Type	Chain	Res	Link	Chirals	Torsions	Rings
6	FUC	F	3	6	-	-	0/1/1/1

There are no bond length outliers.

The worst 5 of 8 bond angle outliers are listed below:

Mol	Chain	Res	Type	Atoms	Z	Observed(°)	Ideal(°)
6	F	3	FUC	C1-C2-C3	4.34	115.96	109.64
6	F	1	NAG	C1-O5-C5	3.62	117.04	112.19
6	F	1	NAG	O5-C5-C6	-2.53	102.73	107.66
6	F	1	NAG	C6-C5-C4	2.46	119.06	113.02
6	F	2	NAG	O5-C5-C6	2.27	112.09	107.66

There are no chirality outliers.

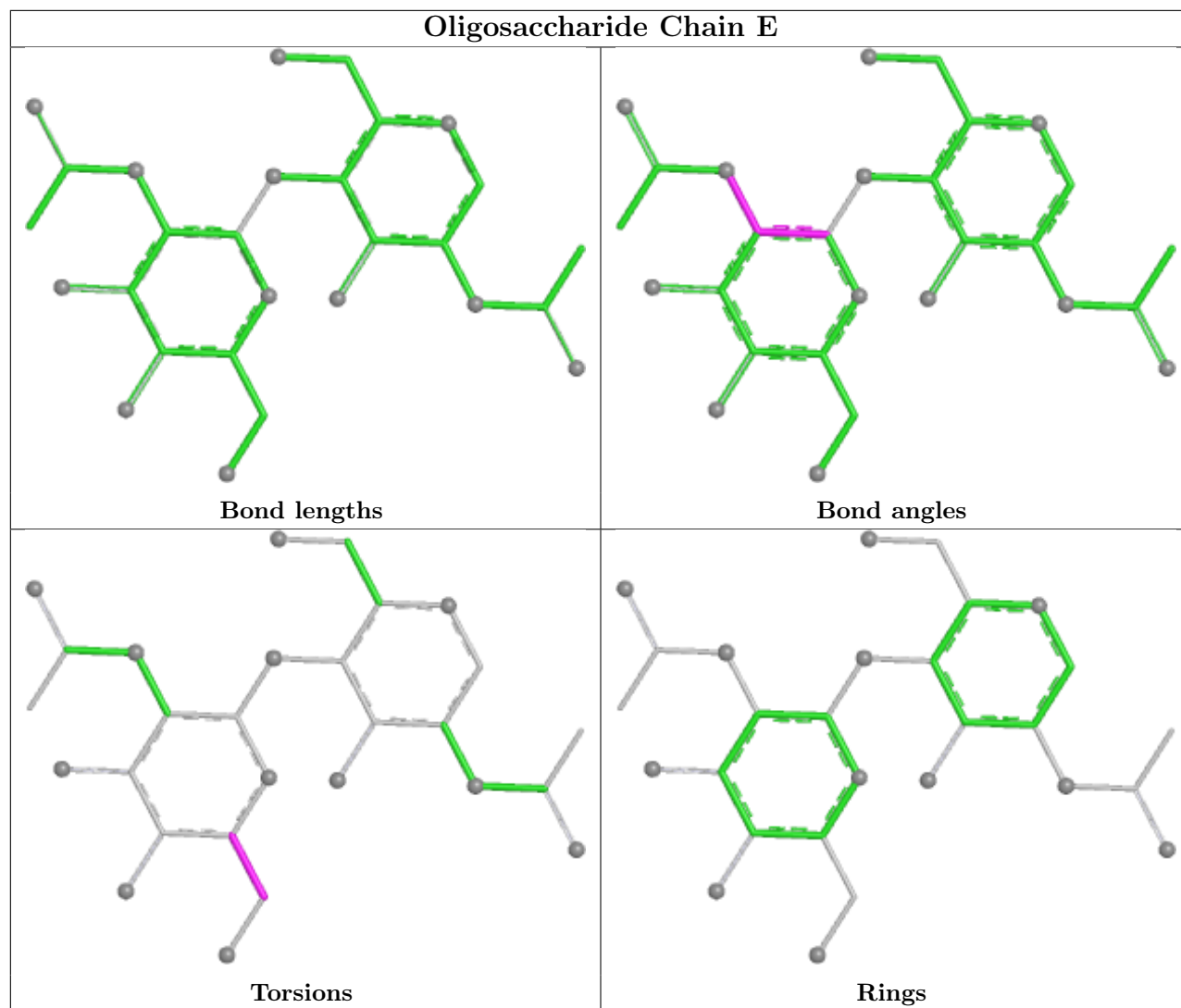
5 of 6 torsion outliers are listed below:

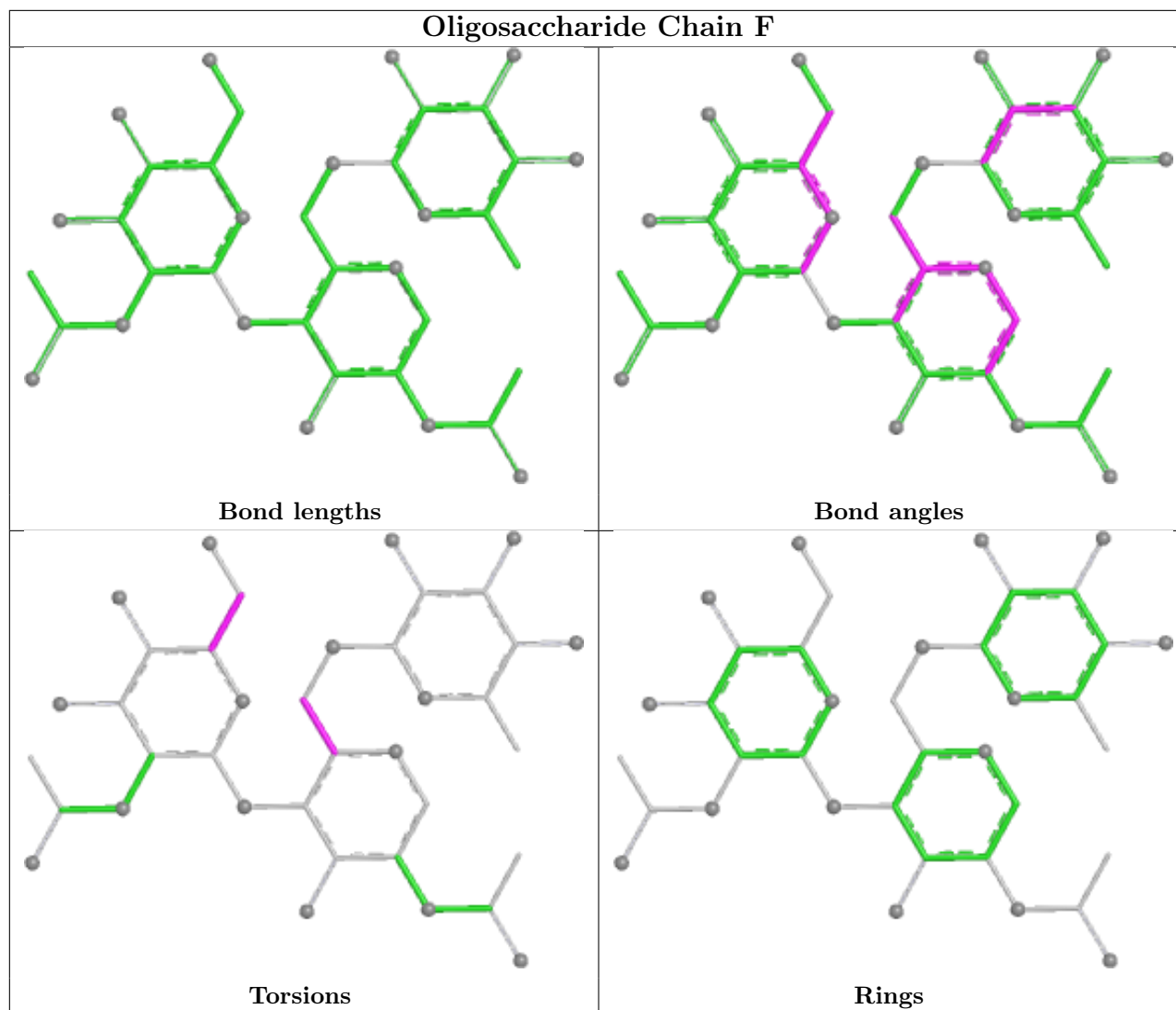
Mol	Chain	Res	Type	Atoms
6	F	2	NAG	O5-C5-C6-O6
6	F	1	NAG	O5-C5-C6-O6
6	F	1	NAG	C4-C5-C6-O6
6	F	2	NAG	C4-C5-C6-O6
5	E	2	NAG	C4-C5-C6-O6

There are no ring outliers.

No monomer is involved in short contacts.

The following is a two-dimensional graphical depiction of Mogul quality analysis of bond lengths, bond angles, torsion angles, and ring geometry for oligosaccharide.





## 5.6 Ligand geometry [i](#)

3 ligands are modelled in this entry.

In the following table, the Counts columns list the number of bonds (or angles) for which Mogul statistics could be retrieved, the number of bonds (or angles) that are observed in the model and the number of bonds (or angles) that are defined in the Chemical Component Dictionary. The Link column lists molecule types, if any, to which the group is linked. The Z score for a bond length (or angle) is the number of standard deviations the observed value is removed from the expected value. A bond length (or angle) with  $|Z| > 2$  is considered an outlier worth inspection. RMSZ is the root-mean-square of all Z scores of the bond lengths (or angles).

Mol	Type	Chain	Res	Link	Bond lengths			Bond angles		
					Counts	RMSZ	$\# Z  > 2$	Counts	RMSZ	$\# Z  > 2$
8	7LP	A	307	-	47,47,47	0.98	3 (6%)	56,59,59	1.16	7 (12%)
7	NAG	A	301	1	14,14,15	0.56	0	17,19,21	1.18	1 (5%)
9	PLM	A	308	-	17,17,17	0.55	0	17,17,17	0.69	0

In the following table, the Chirals column lists the number of chiral outliers, the number of chiral centers analysed, the number of these observed in the model and the number defined in the Chemical Component Dictionary. Similar counts are reported in the Torsion and Rings columns. '-' means no outliers of that kind were identified.

Mol	Type	Chain	Res	Link	Chirals	Torsions	Rings
8	7LP	A	307	-	-	4/42/62/62	0/2/2/2
7	NAG	A	301	1	-	2/6/23/26	0/1/1/1
9	PLM	A	308	-	-	9/15/15/15	-

All (3) bond length outliers are listed below:

Mol	Chain	Res	Type	Atoms	Z	Observed(Å)	Ideal(Å)
8	A	307	7LP	C22-C21	2.79	1.56	1.51
8	A	307	7LP	C14-C13	-2.69	1.44	1.51
8	A	307	7LP	O9-C31	2.50	1.48	1.41

The worst 5 of 8 bond angle outliers are listed below:

Mol	Chain	Res	Type	Atoms	Z	Observed(°)	Ideal(°)
7	A	301	NAG	C1-O5-C5	3.24	116.53	112.19
8	A	307	7LP	C28-C27-N2	-3.05	105.32	109.66
8	A	307	7LP	C19-N1-C21	2.69	127.83	122.82
8	A	307	7LP	O8-C29-C30	-2.64	102.35	111.33
8	A	307	7LP	C31-O9-C30	2.62	118.84	113.72

There are no chirality outliers.

5 of 15 torsion outliers are listed below:

Mol	Chain	Res	Type	Atoms
7	A	301	NAG	C4-C5-C6-O6
9	A	308	PLM	C2-C3-C4-C5
9	A	308	PLM	C8-C9-CA-CB
7	A	301	NAG	O5-C5-C6-O6
8	A	307	7LP	C16-C17-C18-C19

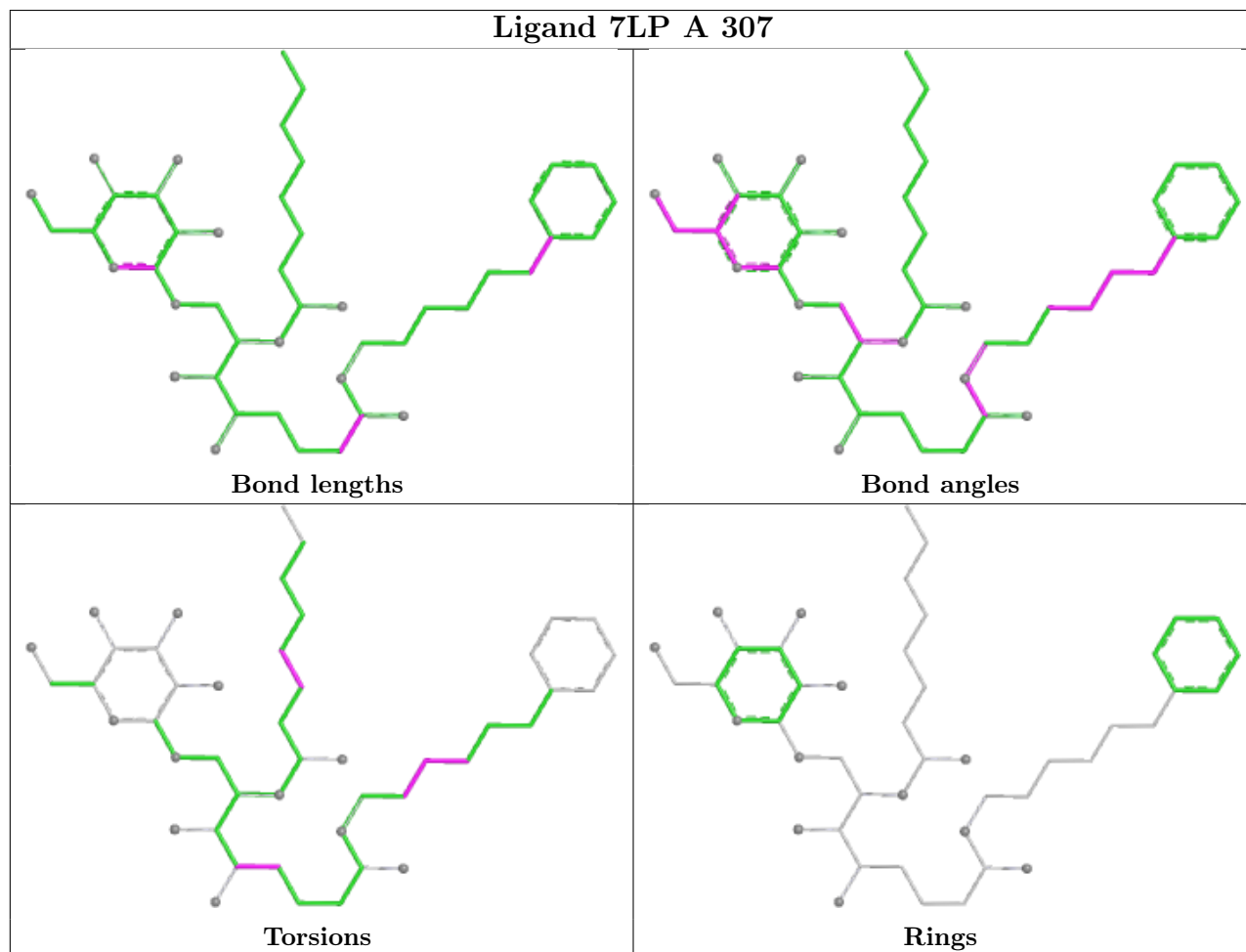
There are no ring outliers.

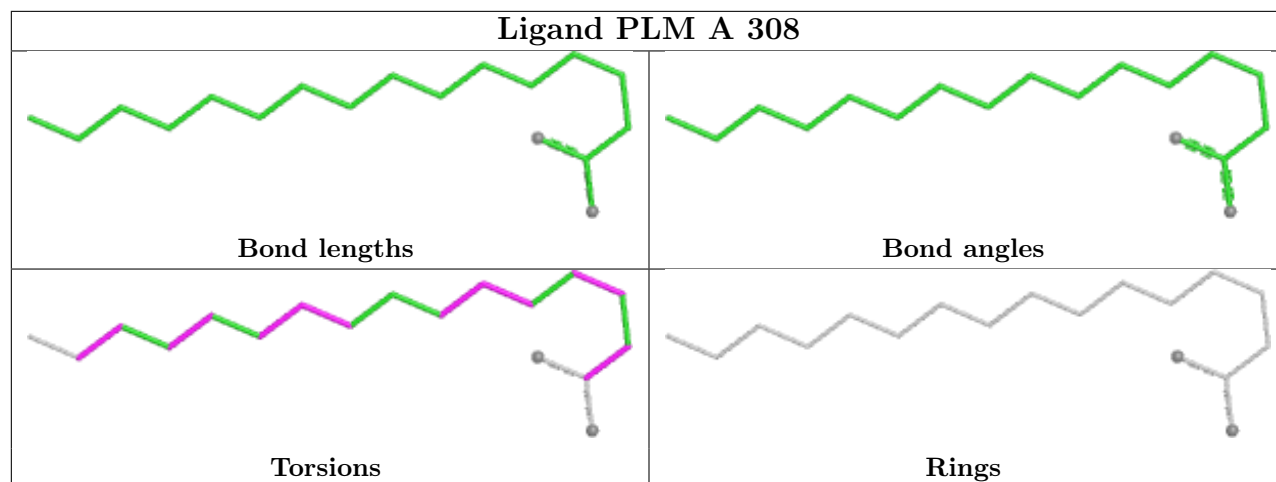
1 monomer is involved in 1 short contact:

Mol	Chain	Res	Type	Clashes	Symm-Clashes
9	A	308	PLM	1	0

The following is a two-dimensional graphical depiction of Mogul quality analysis of bond lengths,

bond angles, torsion angles, and ring geometry for all instances of the Ligand of Interest. In addition, ligands with molecular weight > 250 and outliers as shown on the validation Tables will also be included. For torsion angles, if less than 5% of the Mogul distribution of torsion angles is within 10 degrees of the torsion angle in question, then that torsion angle is considered an outlier. Any bond that is central to one or more torsion angles identified as an outlier by Mogul will be highlighted in the graph. For rings, the root-mean-square deviation (RMSD) between the ring in question and similar rings identified by Mogul is calculated over all ring torsion angles. If the average RMSD is greater than 60 degrees and the minimal RMSD between the ring in question and any Mogul-identified rings is also greater than 60 degrees, then that ring is considered an outlier. The outliers are highlighted in purple. The color gray indicates Mogul did not find sufficient equivalents in the CSD to analyse the geometry.





## 5.7 Other polymers [i](#)

There are no such residues in this entry.

## 5.8 Polymer linkage issues [i](#)

There are no chain breaks in this entry.

## 6 Fit of model and data [i](#)

### 6.1 Protein, DNA and RNA chains [i](#)

In the following table, the column labelled ‘#RSRZ> 2’ contains the number (and percentage) of RSRZ outliers, followed by percent RSRZ outliers for the chain as percentile scores relative to all X-ray entries and entries of similar resolution. The OWAB column contains the minimum, median, 95<sup>th</sup> percentile and maximum values of the occupancy-weighted average B-factor per residue. The column labelled ‘Q< 0.9’ lists the number of (and percentage) of residues with an average occupancy less than 0.9.

Mol	Chain	Analysed	<RSRZ>	#RSRZ>2	OWAB(Å <sup>2</sup> )	Q<0.9
1	A	267/285 (93%)	0.22	21 (7%) 18 16	26, 37, 80, 101	0
2	B	98/99 (98%)	0.34	5 (5%) 33 30	30, 43, 61, 92	0
3	C	199/209 (95%)	0.26	12 (6%) 27 24	25, 37, 73, 91	0
4	D	239/241 (99%)	-0.11	6 (2%) 58 55	19, 35, 58, 86	1 (0%)
All	All	803/834 (96%)	0.15	44 (5%) 30 27	19, 37, 74, 101	1 (0%)

The worst 5 of 44 RSRZ outliers are listed below:

Mol	Chain	Res	Type	RSRZ
4	D	181	ASN	4.6
1	A	197	PRO	4.6
3	C	150	GLN	4.5
3	C	204	SER	4.4
1	A	255	ALA	3.8

### 6.2 Non-standard residues in protein, DNA, RNA chains [i](#)

There are no non-standard protein/DNA/RNA residues in this entry.

### 6.3 Carbohydrates [i](#)

In the following table, the Atoms column lists the number of modelled atoms in the group and the number defined in the chemical component dictionary. The B-factors column lists the minimum, median, 95<sup>th</sup> percentile and maximum values of B factors of atoms in the group. The column labelled ‘Q< 0.9’ lists the number of atoms with occupancy less than 0.9.

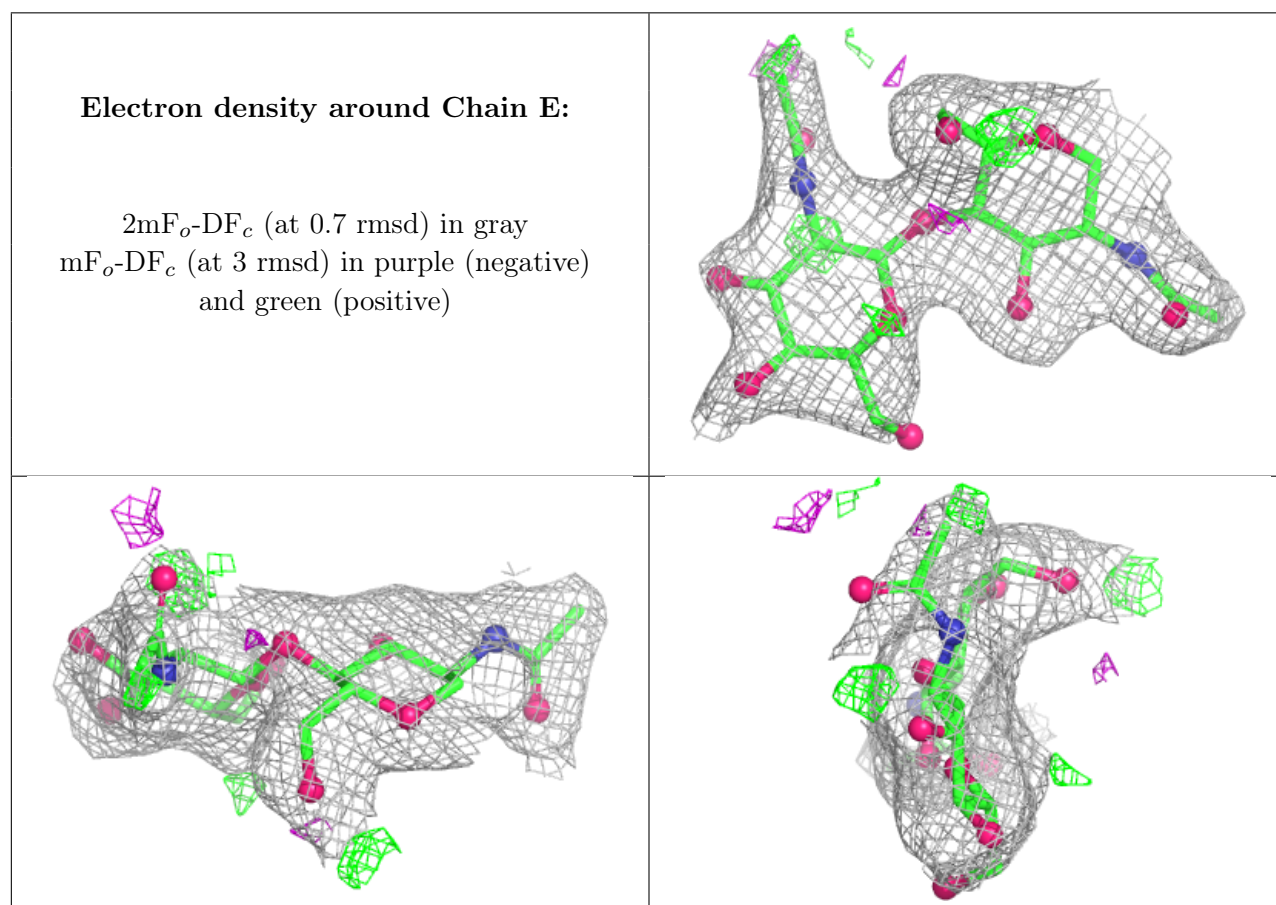
Mol	Type	Chain	Res	Atoms	RSCC	RSR	B-factors(Å <sup>2</sup> )	Q<0.9
5	NAG	E	2	14/15	0.72	0.16	61,69,72,77	0
6	FUC	F	3	10/11	0.83	0.14	59,62,63,64	0

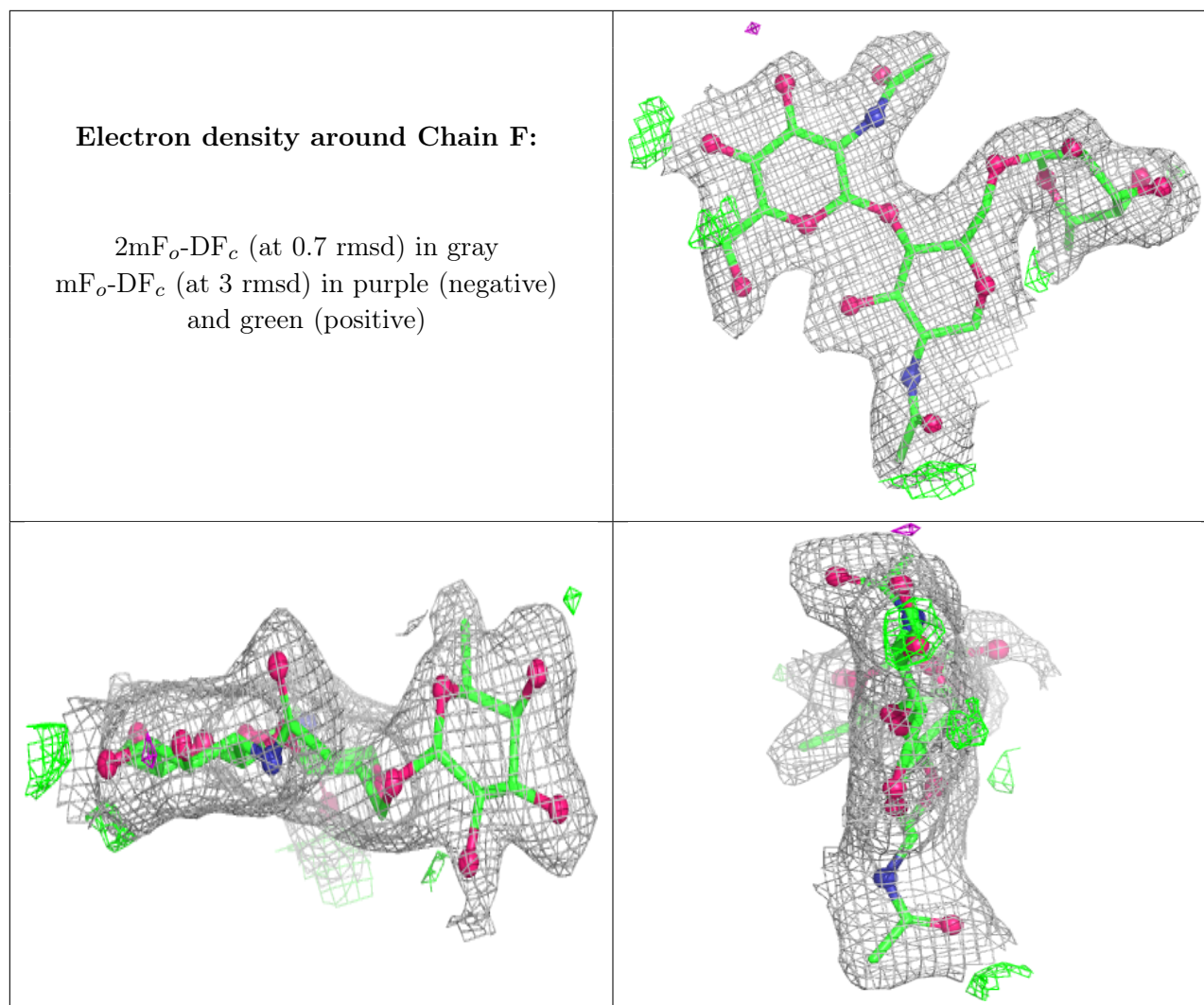
*Continued on next page...*

Continued from previous page...

Mol	Type	Chain	Res	Atoms	RSCC	RSR	B-factors( $\text{\AA}^2$ )	Q<0.9
6	NAG	F	2	14/15	0.86	0.10	50,55,60,61	0
5	NAG	E	1	14/15	0.94	0.07	39,42,46,52	0
6	NAG	F	1	14/15	0.94	0.07	35,38,48,56	0

The following is a graphical depiction of the model fit to experimental electron density for oligosaccharide. Each fit is shown from different orientation to approximate a three-dimensional view.





## 6.4 Ligands [i](#)

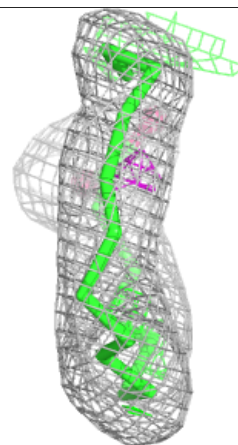
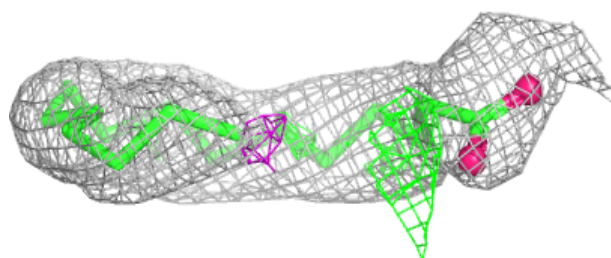
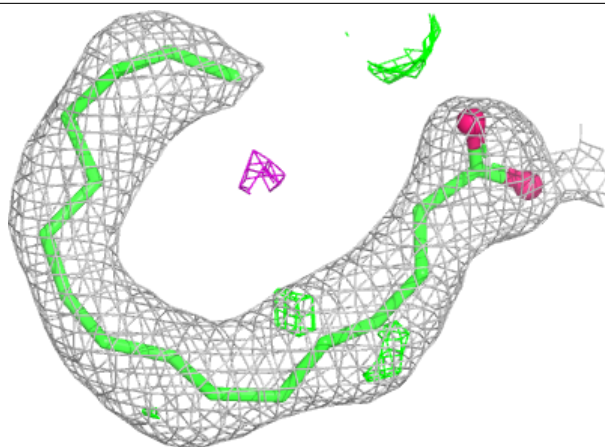
In the following table, the Atoms column lists the number of modelled atoms in the group and the number defined in the chemical component dictionary. The B-factors column lists the minimum, median, 95<sup>th</sup> percentile and maximum values of B factors of atoms in the group. The column labelled 'Q< 0.9' lists the number of atoms with occupancy less than 0.9.

Mol	Type	Chain	Res	Atoms	RSCC	RSR	B-factors(Å <sup>2</sup> )	Q<0.9
7	NAG	A	301	14/15	0.85	0.13	56,63,67,68	0
9	PLM	A	308	18/18	0.90	0.16	46,48,57,60	0
8	7LP	A	307	46/46	0.94	0.09	23,30,47,48	0

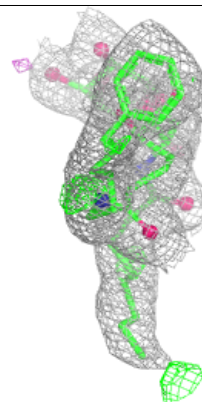
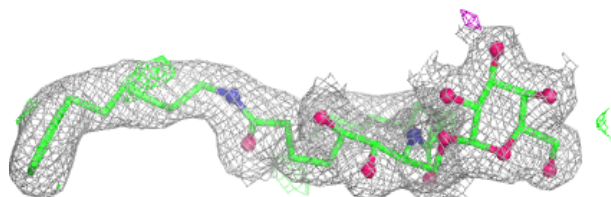
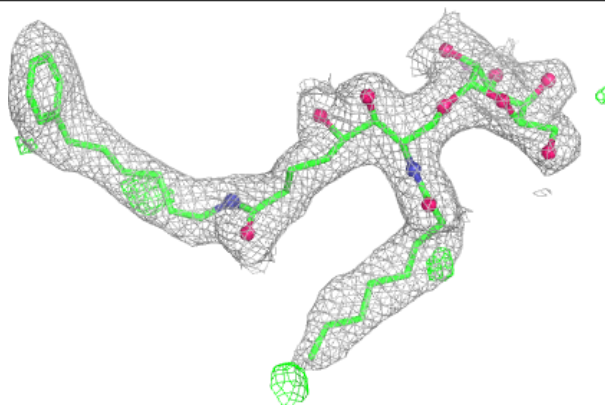
The following is a graphical depiction of the model fit to experimental electron density of all instances of the Ligand of Interest. In addition, ligands with molecular weight > 250 and outliers as shown on the geometry validation Tables will also be included. Each fit is shown from different orientation to approximate a three-dimensional view.

**Electron density around PLM A 308:**

$2mF_o-DF_c$  (at 0.7 rmsd) in gray  
 $mF_o-DF_c$  (at 3 rmsd) in purple (negative)  
and green (positive)

**Electron density around 7LP A 307:**

$2mF_o-DF_c$  (at 0.7 rmsd) in gray  
 $mF_o-DF_c$  (at 3 rmsd) in purple (negative)  
and green (positive)



## 6.5 Other polymers [i](#)

There are no such residues in this entry.