



wwPDB X-ray Structure Validation Summary Report ⓘ

Mar 1, 2026 – 06:51 AM UTC

PDB ID : 3D1D / pdb_00003d1d
Title : Hexagonal crystal structure of Tas3 C-terminal alpha motif
Authors : Li, H.; Patel, D.J.
Deposited on : 2008-05-05
Resolution : 2.60 Å(reported)

This is a wwPDB X-ray Structure Validation Summary Report for a publicly released PDB entry.

We welcome your comments at validation@mail.wwpdb.org

A user guide is available at

<https://www.wwpdb.org/validation/2017/XrayValidationReportHelp>

with specific help available everywhere you see the ⓘ symbol.

The types of validation reports are described at

<http://www.wwpdb.org/validation/2017/FAQs#types>.

The following versions of software and data (see [references ⓘ](#)) were used in the production of this report:

MolProbity : 4-5-2 with Phenix2.0
Xtrriage (Phenix) : 2.0
EDS : 3.0
Percentile statistics : 20250101.v01 (using entries in the PDB archive January 1st 2025)
CCP4 : 9.0.010 (Gargrove)
Density-Fitness : 1.0.12
Ideal geometry (proteins) : Engh & Huber (2001)
Ideal geometry (DNA, RNA) : Parkinson et al. (1996)
Validation Pipeline (wwPDB-VP) : 2.49

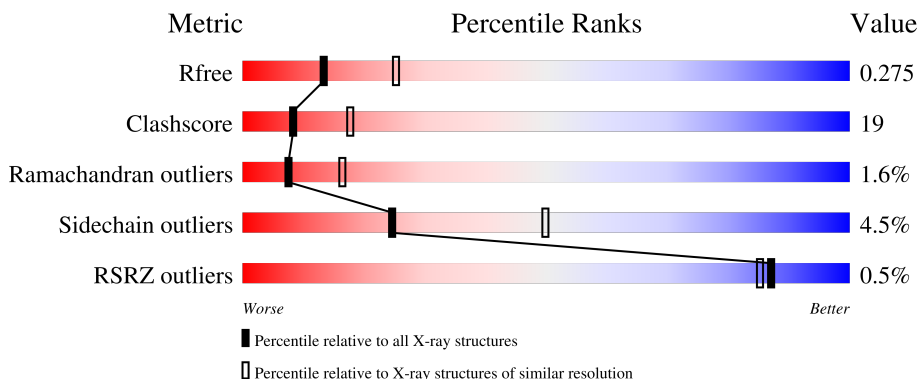
1 Overall quality at a glance

The following experimental techniques were used to determine the structure:

X-RAY DIFFRACTION

The reported resolution of this entry is 2.60 Å.

Percentile scores (ranging between 0-100) for global validation metrics of the entry are shown in the following graphic. The table shows the number of entries on which the scores are based.




Metric	Whole archive (#Entries)	Similar resolution (#Entries, resolution range(Å))
R_{free}	180053	4008 (2.60-2.60)
Clashscore	190562	4347 (2.60-2.60)
Ramachandran outliers	187476	4277 (2.60-2.60)
Sidechain outliers	187428	4277 (2.60-2.60)
RSRZ outliers	180081	4008 (2.60-2.60)

The table below summarises the geometric issues observed across the polymeric chains and their fit to the electron density. The red, orange, yellow and green segments of the lower bar indicate the fraction of residues that contain outliers for ≥ 3 , 2, 1 and 0 types of geometric quality criteria respectively. A grey segment represents the fraction of residues that are not modelled. The numeric value for each fraction is indicated below the corresponding segment, with a dot representing fractions $\leq 5\%$. The upper red bar (where present) indicates the fraction of residues that have poor fit to the electron density. The numeric value is given above the bar.

Mol	Chain	Length	Quality of chain
1	A	124	
1	B	124	
1	C	124	
1	D	124	
1	E	124	

Continued on next page...

Continued from previous page...

Mol	Chain	Length	Quality of chain
1	F	124	 <p>%</p> <p>52% 33% 12%</p>

2 Entry composition

There are 2 unique types of molecules in this entry. The entry contains 5402 atoms, of which 0 are hydrogens and 0 are deuteriums.

In the tables below, the ZeroOcc column contains the number of atoms modelled with zero occupancy, the AltConf column contains the number of residues with at least one atom in alternate conformation and the Trace column contains the number of residues modelled with at most 2 atoms.

- Molecule 1 is a protein called RNA-induced transcriptional silencing complex protein tas3.

Mol	Chain	Residues	Atoms					ZeroOcc	AltConf	Trace
			Total	C	N	O	S			
1	A	109	871	568	138	163	2	0	0	0
1	B	109	871	568	138	163	2	0	0	0
1	C	109	871	568	138	163	2	0	0	0
1	D	109	871	568	138	163	2	0	0	0
1	E	109	871	568	138	163	2	0	0	0
1	F	109	871	568	138	163	2	0	0	0

There are 24 discrepancies between the modelled and reference sequences:

Chain	Residue	Modelled	Actual	Comment	Reference
A	422	GLY	-	expression tag	UNP O94687
A	423	SER	-	expression tag	UNP O94687
A	424	HIS	-	expression tag	UNP O94687
A	425	MET	-	expression tag	UNP O94687
B	422	GLY	-	expression tag	UNP O94687
B	423	SER	-	expression tag	UNP O94687
B	424	HIS	-	expression tag	UNP O94687
B	425	MET	-	expression tag	UNP O94687
C	422	GLY	-	expression tag	UNP O94687
C	423	SER	-	expression tag	UNP O94687
C	424	HIS	-	expression tag	UNP O94687
C	425	MET	-	expression tag	UNP O94687
D	422	GLY	-	expression tag	UNP O94687
D	423	SER	-	expression tag	UNP O94687
D	424	HIS	-	expression tag	UNP O94687
D	425	MET	-	expression tag	UNP O94687
E	422	GLY	-	expression tag	UNP O94687

Continued on next page...

Continued from previous page...

Chain	Residue	Modelled	Actual	Comment	Reference
E	423	SER	-	expression tag	UNP O94687
E	424	HIS	-	expression tag	UNP O94687
E	425	MET	-	expression tag	UNP O94687
F	422	GLY	-	expression tag	UNP O94687
F	423	SER	-	expression tag	UNP O94687
F	424	HIS	-	expression tag	UNP O94687
F	425	MET	-	expression tag	UNP O94687

- Molecule 2 is water.

Mol	Chain	Residues	Atoms	ZeroOcc	AltConf
2	A	22	Total O 22 22	0	0
2	B	37	Total O 37 37	0	0
2	C	17	Total O 17 17	0	0
2	D	36	Total O 36 36	0	0
2	E	28	Total O 28 28	0	0
2	F	36	Total O 36 36	0	0

3 Residue-property plots [i](#)

These plots are drawn for all protein, RNA, DNA and oligosaccharide chains in the entry. The first graphic for a chain summarises the proportions of the various outlier classes displayed in the second graphic. The second graphic shows the sequence view annotated by issues in geometry and electron density. Residues are color-coded according to the number of geometric quality criteria for which they contain at least one outlier: green = 0, yellow = 1, orange = 2 and red = 3 or more. A red dot above a residue indicates a poor fit to the electron density ($RSRZ > 2$). Stretches of 2 or more consecutive residues without any outlier are shown as a green connector. Residues present in the sample, but not in the model, are shown in grey.

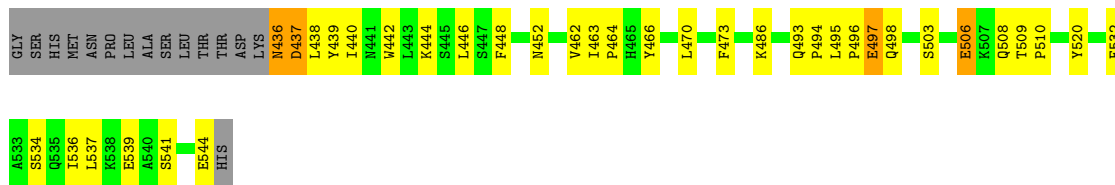
- Molecule 1: RNA-induced transcriptional silencing complex protein tas3

Chain A: 



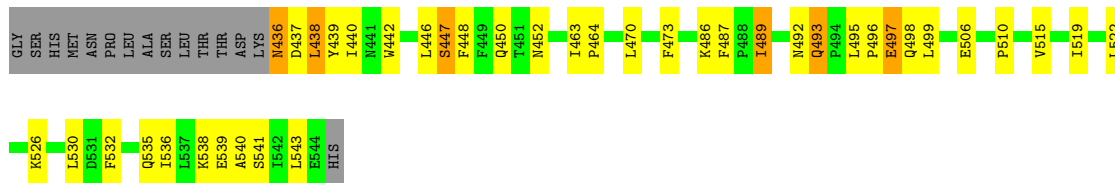
- Molecule 1: RNA-induced transcriptional silencing complex protein tas3

Chain B: 



- Molecule 1: RNA-induced transcriptional silencing complex protein tas3

Chain C: 



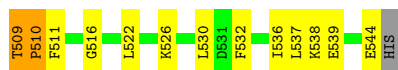
- Molecule 1: RNA-induced transcriptional silencing complex protein tas3

Chain D: 

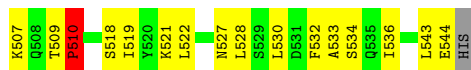




- Molecule 1: RNA-induced transcriptional silencing complex protein tas3



- Molecule 1: RNA-induced transcriptional silencing complex protein tas3



4 Data and refinement statistics i

Property	Value	Source
Space group	P 65	Depositor
Cell constants a, b, c, α , β , γ	84.89Å 84.89Å 165.72Å 90.00° 90.00° 120.00°	Depositor
Resolution (Å)	20.00 – 2.60 20.00 – 2.60	Depositor EDS
% Data completeness (in resolution range)	86.7 (20.00-2.60) 96.1 (20.00-2.60)	Depositor EDS
R_{merge}	0.11	Depositor
R_{sym}	(Not available)	Depositor
$\langle I/\sigma(I) \rangle$ ¹	2.57 (at 2.59Å)	Xtrriage
Refinement program	CNS 1.1	Depositor
R, R_{free}	0.206 , 0.275 0.207 , 0.275	Depositor DCC
R_{free} test set	2038 reflections (9.86%)	wwPDB-VP
Wilson B-factor (Å ²)	43.1	Xtrriage
Anisotropy	0.138	Xtrriage
Bulk solvent k_{sol} (e/Å ³), B_{sol} (Å ²)	0.33 , 39.2	EDS
L-test for twinning ²	$\langle L \rangle = 0.50$, $\langle L^2 \rangle = 0.34$	Xtrriage
Estimated twinning fraction	0.074 for h,-h-k,-l	Xtrriage
F_o, F_c correlation	0.95	EDS
Total number of atoms	5402	wwPDB-VP
Average B, all atoms (Å ²)	48.0	wwPDB-VP

Xtrriage's analysis on translational NCS is as follows: *The analyses of the Patterson function reveals a significant off-origin peak that is 24.93 % of the origin peak, indicating pseudo-translational symmetry. The chance of finding a peak of this or larger height randomly in a structure without pseudo-translational symmetry is equal to 3.4923e-03. The detected translational NCS is most likely also responsible for the elevated intensity ratio.*

¹Intensities estimated from amplitudes.

²Theoretical values of $\langle |L| \rangle$, $\langle L^2 \rangle$ for acentric reflections are 0.5, 0.333 respectively for untwinned datasets, and 0.375, 0.2 for perfectly twinned datasets.

5 Model quality [i](#)

5.1 Standard geometry [i](#)

The Z score for a bond length (or angle) is the number of standard deviations the observed value is removed from the expected value. A bond length (or angle) with $|Z| > 5$ is considered an outlier worth inspection. RMSZ is the root-mean-square of all Z scores of the bond lengths (or angles).

Mol	Chain	Bond lengths		Bond angles	
		RMSZ	# Z >5	RMSZ	# Z >5
1	A	0.42	0/890	0.94	1/1205 (0.1%)
1	B	0.41	0/890	0.99	5/1205 (0.4%)
1	C	0.46	0/890	0.99	3/1205 (0.2%)
1	D	0.50	0/890	1.01	3/1205 (0.2%)
1	E	0.45	0/890	0.99	4/1205 (0.3%)
1	F	0.47	0/890	1.02	8/1205 (0.7%)
All	All	0.45	0/5340	0.99	24/7230 (0.3%)

There are no bond length outliers.

The worst 5 of 24 bond angle outliers are listed below:

Mol	Chain	Res	Type	Atoms	Z	Observed(°)	Ideal(°)
1	B	437	ASP	N-CA-C	-10.15	99.43	112.23
1	E	437	ASP	N-CA-C	-8.17	102.46	111.36
1	D	470	LEU	N-CA-C	-7.10	104.75	113.41
1	A	437	ASP	N-CA-C	-6.84	105.08	113.50
1	F	482	SER	N-CA-C	-6.63	105.16	113.18

There are no chirality outliers.

There are no planarity outliers.

5.2 Too-close contacts [i](#)

In the following table, the Non-H and H(model) columns list the number of non-hydrogen atoms and hydrogen atoms in the chain respectively. The H(added) column lists the number of hydrogen atoms added and optimized by MolProbity. The Clashes column lists the number of clashes within the asymmetric unit, whereas Symm-Clashes lists symmetry-related clashes.

Mol	Chain	Non-H	H(model)	H(added)	Clashes	Symm-Clashes
1	A	871	0	882	41	0
1	B	871	0	882	30	0

Continued on next page...

Continued from previous page...

Mol	Chain	Non-H	H(model)	H(added)	Clashes	Symm-Clashes
1	C	871	0	882	32	0
1	D	871	0	882	34	0
1	E	871	0	882	36	0
1	F	871	0	882	41	0
2	A	22	0	0	2	0
2	B	37	0	0	1	0
2	C	17	0	0	2	0
2	D	36	0	0	3	0
2	E	28	0	0	0	0
2	F	36	0	0	0	0
All	All	5402	0	5292	202	0

The all-atom clashscore is defined as the number of clashes found per 1000 atoms (including hydrogen atoms). The all-atom clashscore for this structure is 19.

The worst 5 of 202 close contacts within the same asymmetric unit are listed below, sorted by their clash magnitude.

Atom-1	Atom-2	Interatomic distance (Å)	Clash overlap (Å)
1:C:452:ASN:HD21	1:C:486:LYS:H	1.04	0.98
1:C:450:GLN:OE1	1:F:507:LYS:HE2	1.73	0.89
1:C:452:ASN:ND2	1:C:486:LYS:H	1.72	0.87
1:E:452:ASN:HD21	1:E:486:LYS:H	1.23	0.84
1:C:448:PHE:HB2	1:C:536:ILE:HD12	1.58	0.84

There are no symmetry-related clashes.

5.3 Torsion angles [i](#)

5.3.1 Protein backbone [i](#)

In the following table, the Percentiles column shows the percent Ramachandran outliers of the chain as a percentile score with respect to all X-ray entries followed by that with respect to entries of similar resolution.

The Analysed column shows the number of residues for which the backbone conformation was analysed, and the total number of residues.

Mol	Chain	Analysed	Favoured	Allowed	Outliers	Percentiles
1	A	107/124 (86%)	96 (90%)	9 (8%)	2 (2%)	6 13
1	B	107/124 (86%)	104 (97%)	2 (2%)	1 (1%)	14 30

Continued on next page...

Continued from previous page...

Mol	Chain	Analysed	Favoured	Allowed	Outliers	Percentiles	
1	C	107/124 (86%)	101 (94%)	4 (4%)	2 (2%)	6	13
1	D	107/124 (86%)	100 (94%)	6 (6%)	1 (1%)	14	30
1	E	107/124 (86%)	101 (94%)	4 (4%)	2 (2%)	6	13
1	F	107/124 (86%)	99 (92%)	6 (6%)	2 (2%)	6	13
All	All	642/744 (86%)	601 (94%)	31 (5%)	10 (2%)	7	16

5 of 10 Ramachandran outliers are listed below:

Mol	Chain	Res	Type
1	A	510	PRO
1	E	492	ASN
1	A	492	ASN
1	F	510	PRO
1	C	438	LEU

5.3.2 Protein sidechains [i](#)

In the following table, the Percentiles column shows the percent sidechain outliers of the chain as a percentile score with respect to all X-ray entries followed by that with respect to entries of similar resolution.

The Analysed column shows the number of residues for which the sidechain conformation was analysed, and the total number of residues.

Mol	Chain	Analysed	Rotameric	Outliers	Percentiles	
1	A	100/113 (88%)	94 (94%)	6 (6%)	17	37
1	B	100/113 (88%)	95 (95%)	5 (5%)	22	46
1	C	100/113 (88%)	95 (95%)	5 (5%)	22	46
1	D	100/113 (88%)	96 (96%)	4 (4%)	28	55
1	E	100/113 (88%)	97 (97%)	3 (3%)	36	64
1	F	100/113 (88%)	96 (96%)	4 (4%)	28	55
All	All	600/678 (88%)	573 (96%)	27 (4%)	24	50

5 of 27 residues with a non-rotameric sidechain are listed below:

Mol	Chain	Res	Type
1	C	497	GLU
1	D	438	LEU

Continued on next page...

Continued from previous page...

Mol	Chain	Res	Type
1	F	504	ASN
1	D	437	ASP
1	D	497	GLU

Sometimes sidechains can be flipped to improve hydrogen bonding and reduce clashes. 5 of 33 such sidechains are listed below:

Mol	Chain	Res	Type
1	F	450	GLN
1	F	452	ASN
1	F	527	ASN
1	C	452	ASN
1	C	436	ASN

5.3.3 RNA [i](#)

There are no RNA molecules in this entry.

5.4 Non-standard residues in protein, DNA, RNA chains [i](#)

There are no non-standard protein/DNA/RNA residues in this entry.

5.5 Carbohydrates [i](#)

There are no oligosaccharides in this entry.

5.6 Ligand geometry [i](#)

There are no ligands in this entry.

5.7 Other polymers [i](#)

There are no such residues in this entry.

5.8 Polymer linkage issues [i](#)

There are no chain breaks in this entry.

6 Fit of model and data [i](#)

6.1 Protein, DNA and RNA chains [i](#)

In the following table, the column labelled '#RSRZ > 2' contains the number (and percentage) of RSRZ outliers, followed by percent RSRZ outliers for the chain as percentile scores relative to all X-ray entries and entries of similar resolution. The OWAB column contains the minimum, median, 95th percentile and maximum values of the occupancy-weighted average B-factor per residue. The column labelled 'Q < 0.9' lists the number of (and percentage) of residues with an average occupancy less than 0.9.

Mol	Chain	Analysed	<RSRZ>	#RSRZ>2	OWAB(Å ²)	Q<0.9
1	A	109/124 (87%)	-0.07	0 100 100	31, 62, 73, 78	0
1	B	109/124 (87%)	-0.43	0 100 100	28, 48, 61, 78	0
1	C	109/124 (87%)	-0.27	0 100 100	30, 47, 72, 80	0
1	D	109/124 (87%)	-0.44	2 (1%) 67 63	24, 42, 58, 74	0
1	E	109/124 (87%)	-0.32	0 100 100	28, 46, 65, 79	0
1	F	109/124 (87%)	-0.36	1 (0%) 81 78	30, 45, 61, 80	0
All	All	654/744 (87%)	-0.31	3 (0%) 87 85	24, 47, 70, 80	0

All (3) RSRZ outliers are listed below:

Mol	Chain	Res	Type	RSRZ
1	F	436	ASN	2.7
1	D	492	ASN	2.6
1	D	436	ASN	2.0

6.2 Non-standard residues in protein, DNA, RNA chains [i](#)

There are no non-standard protein/DNA/RNA residues in this entry.

6.3 Carbohydrates [i](#)

There are no oligosaccharides in this entry.

6.4 Ligands [i](#)

There are no ligands in this entry.

6.5 Other polymers [i](#)

There are no such residues in this entry.